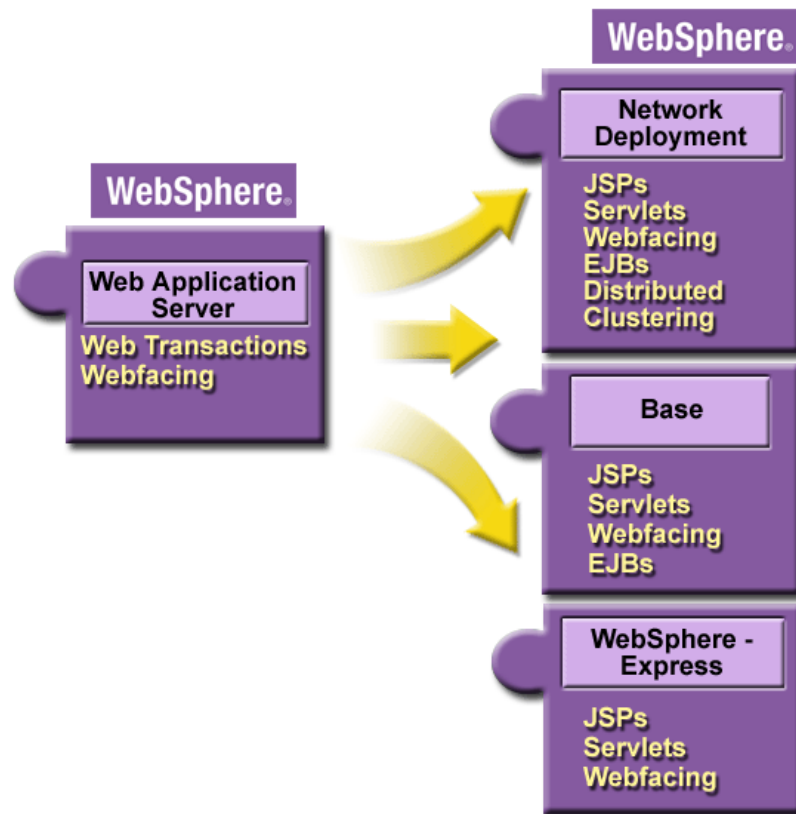


WebSphere Application Server V5



- Flexible choice of Web application server, packaged for range of customer sizes
- Network Deployment
 - ▶ Advanced clustering distributed security, directory and systems management
- Base
 - ▶ Premier application server
 - ▶ Integrating enterprise data and dynamic e-business transactions
- Express
 - ▶ Development environment
 - ▶ Simple, dynamic Web sites

WebSphere - Express for iSeries




- Cost-effective deployment and management of dynamic Web sites and applications
- Self-configuring install Wizard, only available on iSeries
 - ▶ Sets up WebSphere and IBM HTTP Server (powered by Apache)
- Includes WebSphere Development Studio Client for iSeries and Telephone Directory
- Ideal to run WebFaced applications

Apache Powered Web Serving

SPECwebSSL

IBM eServer iSeries 890
 HP Server rp8400
 IBM eServer iSeries 890

HTTP Server	Processor	Simultaneous Connections
IBM HTTP Server (powered by Apache)	16-way POWER4	4,497* 
Zeus V4.1R3	16-way PA 8700	4,400
IBM HTTP Server (powered by Apache)	16-way POWER4	3,600

SPECweb99

IBM eServer pSeries 690 HPC
 HP Server rp8400
 IBM eServer iSeries 890

HTTP Server	Processor	Simultaneous Connections
Zeus 4.0	16-way POWER4	21,000
Zeus 3.4r3	16-way PA 8700	15,000
IBM HTTP Server (powered by Apache)	16-way POWER4	12,900

- Delivering industry-leading Apache based Web serving performance
- 64% of production Web sites based on Apache, <2% based on Zeus*

*Note: Results posted in January 2003. <http://www.ideainternational.com>

*Source: NetCraft Web Survey November 2002

Lotus Notes and Domino 6 and iNotes Web Access

The screenshot shows the iNotes Web Access interface. The main window displays a calendar for December 2002, a 'New Mail' list with columns for 'Who', 'Date', and 'Size', and a 'Quick Links' section. A 'Lotus Sametime' chat window is open in the foreground, showing a list of contacts under 'My Dept' and 'Work'. A yellow arrow points from the mail list area to a puzzle piece diagram below.

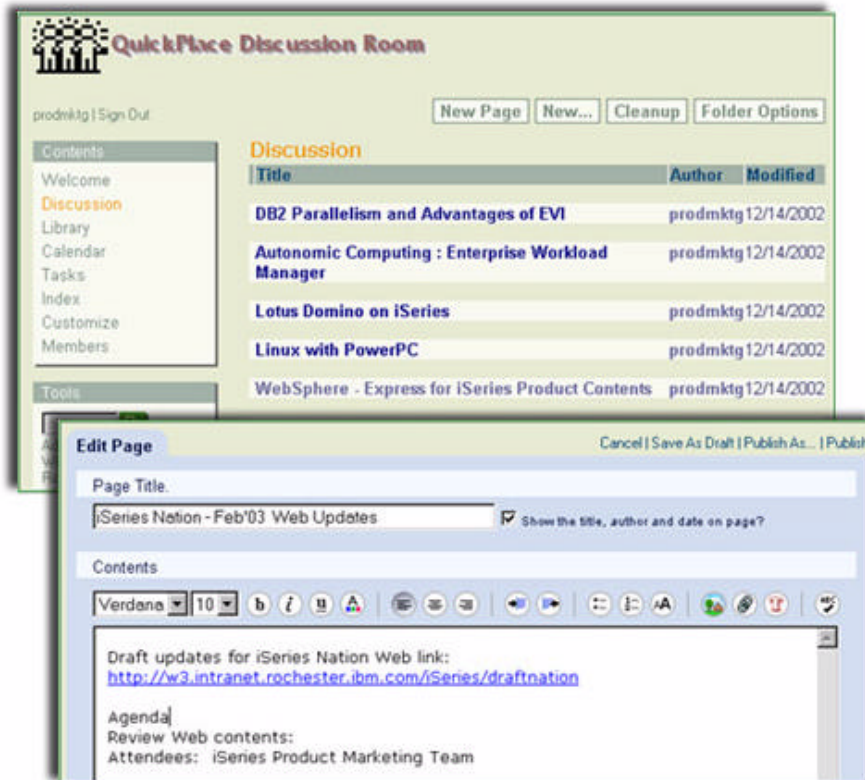
The puzzle piece diagram consists of four pieces:

- Lotus** (Yellow piece)
- Information Management** (Blue piece)
- Web Application Server** (Purple piece)
- Core Business Applications** (Green piece)

Below the puzzle pieces, the text reads: **Integrated Messaging Collaboration Services**.

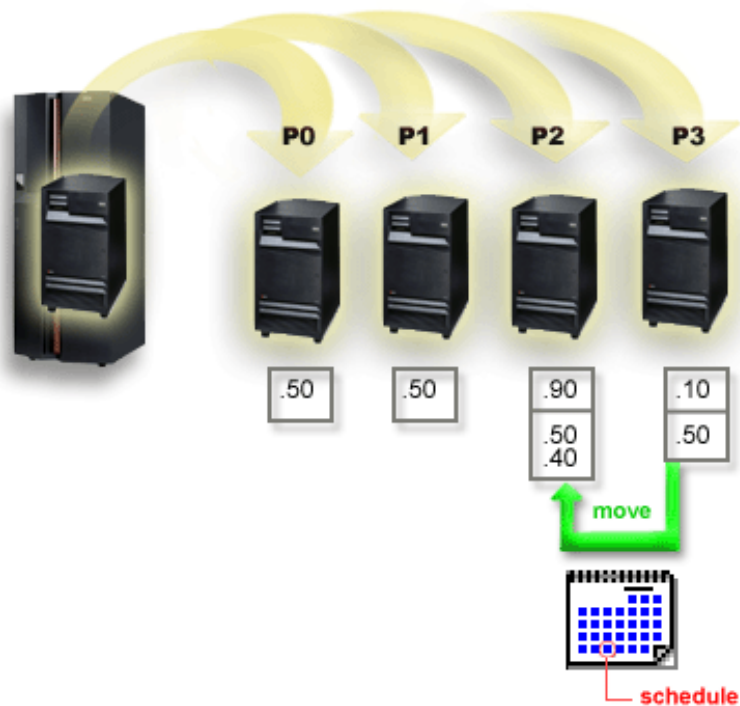
- Empower companies to create dynamic workplaces
- New capabilities of Lotus Notes® and Domino 6 deliver breakthrough performance, scalability and productivity
- iNotes™ Web Access delivers an intuitive browser-based interface to users throughout an organisation

IBM Lotus QuickPlace™ and Sametime



- Get answers and make decisions faster with real time instant messaging
- Web-based team workspaces to store collective knowledge and manage projects
- Online Web conferences to share information with colleagues, suppliers and customers
- Awareness to quickly locate available skills and resources
- Integration with Notes, Microsoft Outlook®, and WebSphere

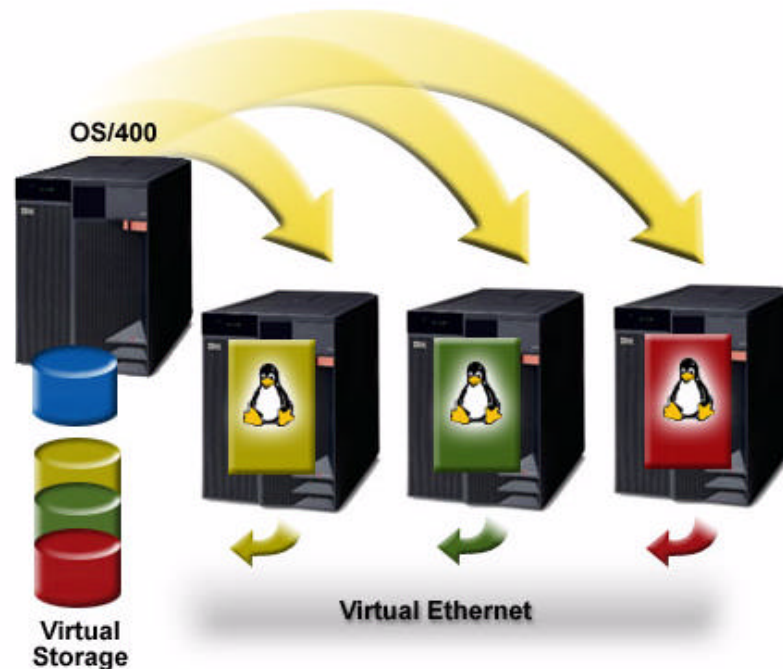
Optimise IT Resource Utilisation with Logical Partitions



- Reduce costs via server consolidation
- Mainframe-class dynamic logical partitioning
- Market proven with over 10,000 active iSeries partitions in production
- Up to 32 OS/400[®] and Linux partitions
- Uni-processor partitioning
 - ▶ Up to 10 OS/400¹ or Linux LPARs per processor
- Windows-based graphical management and scheduling

¹On i825, i870 and i890

Exploiting Open Standards with Linux

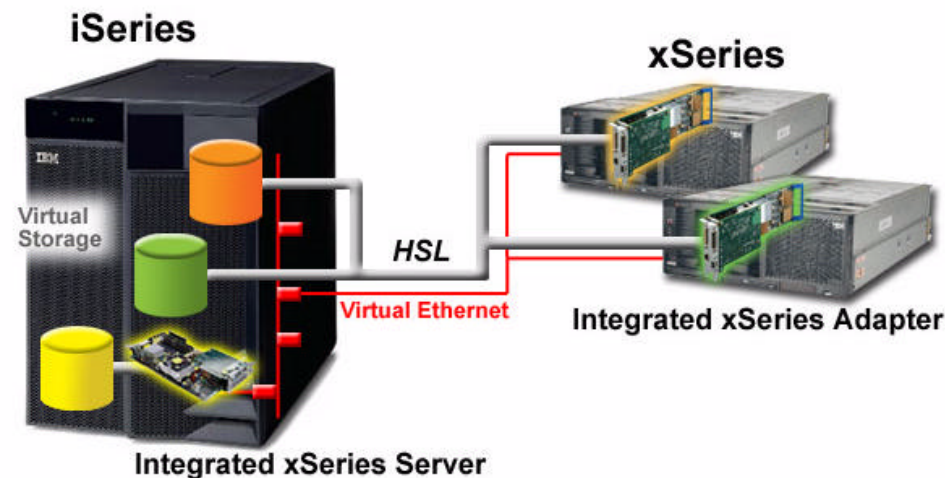


- Extending award-winning iSeries Linux capabilities
- 64-bit scalability with United Linux (SuSE and Turbolinux) and RedHat
- Consolidate with up to 10 Linux instances per processor
- i870 and i890 offer one no charge Linux processor activation¹
- Flexible growth and management with dynamic virtual storage
- IBM DB2 and WebSphere (SOD)²

¹ Available on i870 or i890 with Enterprise Edition.

² Statement of Direction: This presentation contains IBM plans and directions. Such plans are subject to change without notice.

Windows Server Management

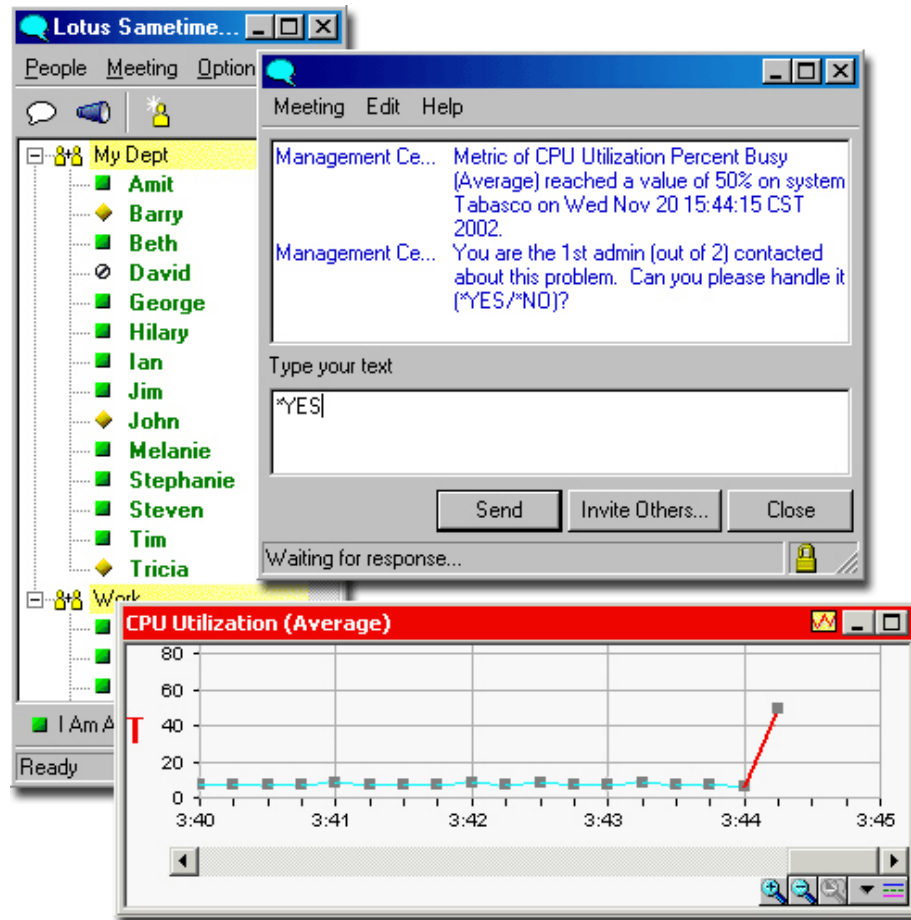


- Lower cost of storage management and user administration
- Flexible Windows images simplify server test and deployment
- Integrated xSeries™ Server with 1.6 GHz Intel® Xeon processor
- Integrated xSeries Adapter supports xSeries x235, x255, x360, x440
- Support for Microsoft .NET¹
- i825, i870 and i890 offer one no charge Integrated xSeries Server²

¹ Product Preview: This presentation contains IBM plans and directions. Such plans are subject to change without notice

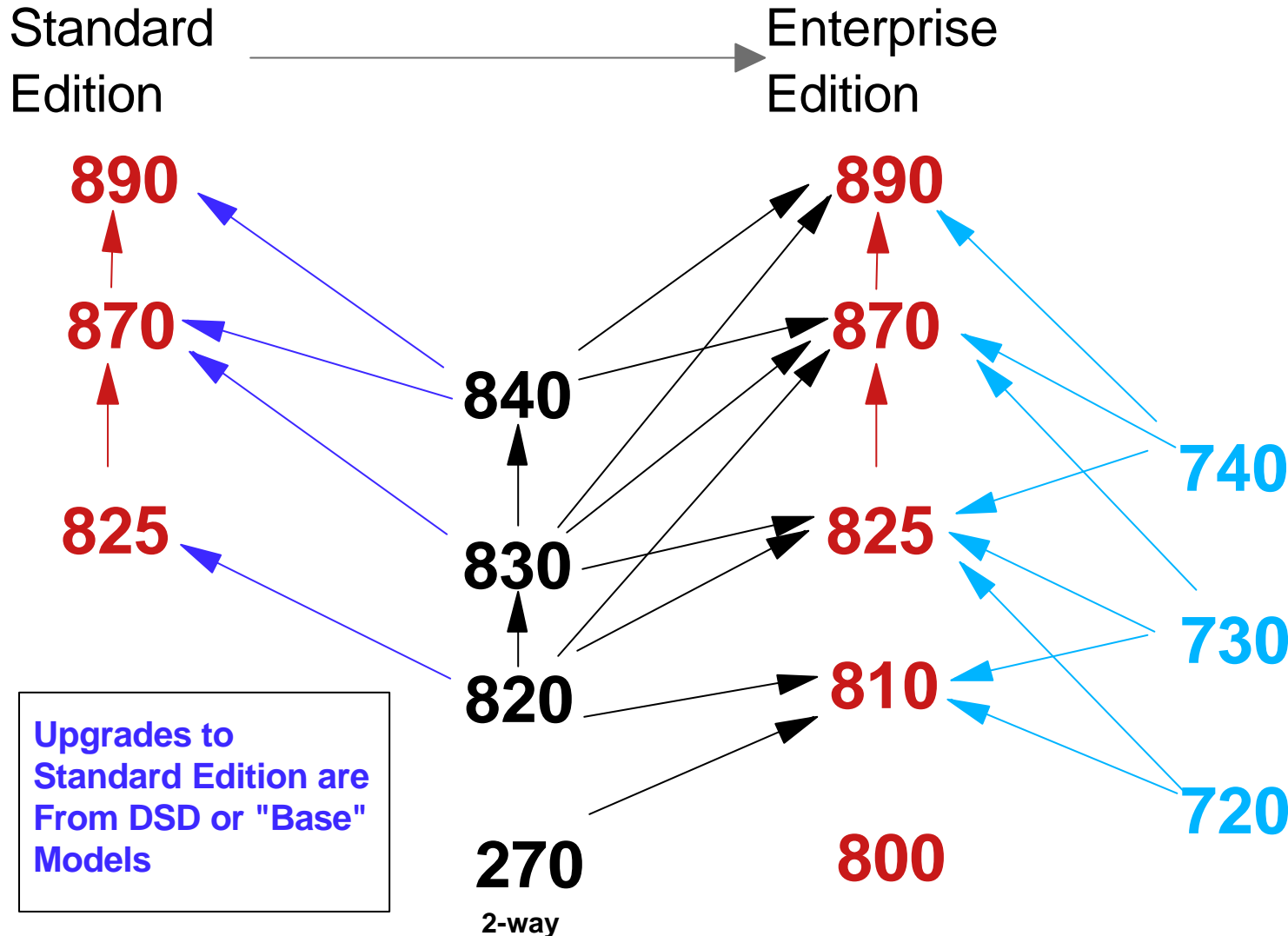
² Available on i825, i870 and i890 with Enterprise Edition.

Lotus Sametime and iSeries Navigator



- Improves operator productivity with instant message response to system events
- Integrated OS/400 monitoring with Sametime instant messaging
- Assures response with automatic event delegation through hierarchy of designated operators

Upgrades Into the New Product Line



- If needed, Edition upgrades are available (e.g. Standard to Enterprise)
- If existing server has interactive CPW, it can only upgrade into a server with the Enterprise Edition (includes maximum 5250 CPW)
- Model 270 upgrades are now available, the 270 2-way can upgrade into the i810
- 720, 730, 740 upgrades are available until October 7, 2003

End-of-Life Announcements

- Withdrawal from Marketing Announcements
 - ▶ Upgrades from 720/730/740 to 820/825/830/870/840/890
 - Last day to order October 7, 2003
 - ▶ Originally announced 890 processor feature codes #2487, #2488, #0197, #0198
 - Last day to order May 6, 2003
- Previously announced withdrawals include
 - ▶ V5R2 will be the last release to support Model 150, 6xx and Sxx processors
 - ▶ V5R2 does not support 4xx and 5xx Models
 - ▶ V5R2 does not support 13GB QIC Tape Drives, ISDN adapters, ATM
- Model 800, 810, 825, 870 and 890 do not support
 - ▶ SPD I/O
 - ▶ 1.6GB Read Cache
 - ▶ Older QIC tape drives (#1349,#1379,#6368,#6369,#6380,#6480,#1450,#1380,#6381, and #6481)
 - ▶ Older 8mm tape drives (7208-002)

Refer to <http://www.ibm.com/servers/eserver/series/support/planning/nav.html> for more information

Software Maintenance

- Provide users timely access to proven solutions
- Improve IT productivity and deployment effectiveness
- Single, cost effective offering combining software upgrade entitlement and remote technical support
 - ▶ Access current and future releases
 - ▶ Voice and electronic support
 - ▶ Defect and routine use assistance
- Minimum one year contract sold with new iSeries servers

