

E T H E R M E N U U S E R ' S G U I D E

**for use with
DOS 2.0, 2.1, and 3.0**

November, 1984

Copyright (c) 1984, 3Com Corporation

P.O. Box 7390
Mountain View, California 94039
U.S.A.

CONTENTS

SECTION 1 - USING ETHERMENU

| | |
|---|------|
| Introduction | 1-1 |
| Getting Started | 1-1 |
| Using Menus | 1-3 |
| Main Menu | 1-3 |
| EtherSeries Utilities Menu | 1-5 |
| DOS Utilities Menu | 1-6 |
| Performing Network Operations | 1-9 |
| Selecting an Object | 1-10 |
| Selecting an Operation | 1-11 |
| Providing Parameters | 1-11 |
| Carrying Out a Command | 1-11 |
| Using the Network Volumes and Printers Menu ... | 1-12 |
| Getting Help | 1-12 |
| Moving the Cursor | 1-12 |
| Selecting an Item | 1-13 |
| Entering Parameters | 1-13 |
| Cancelling a Selection or Command | 1-13 |
| Leaving EtherMenu | 1-14 |

APPENDIX A - ERROR MESSAGES

LIST OF FIGURES

| | |
|---|-----|
| EtherSeries Main Menu | 1-4 |
| EtherSeries Utilities Menu | 1-5 |
| DOS Utilities Menu | 1-6 |
| Network Volumes and Printers Menu | 1-9 |

SECTION 1

USING ETHERMENU

INTRODUCTION

EtherMenu allows you to use menus to select the tasks you want to perform. You can use the set of menus and applications provided with your EtherSeries software or you can design your own set of menus. See the EtherMenu/PC Administrator's Guide for information on designing your own menus.

This manual describes the 3Com EtherSeries standard menus that are provided on your EtherMenu Software diskette. It tells you how to choose an option from a menu, respond to questions or prompts that appear on the screen, return to a previous menu, or return to the DOS prompt.

Appendix A lists error messages and corrective actions.

Before you can use EtherMenu, the menus and applications you want to use must be installed. Installation instructions are given in the EtherMenu/PC Administrator's Guide.

Regardless of whether you use the standard menus or customized menus, follow the procedures given in this section to start using the menu system and to choose an option from a menu.

GETTING STARTED

First start your computer with your EtherSeries/DOS diskette in drive A: or start from your fixed disk, if you have one. If the Main Menu appears immediately (see figure 1-1), you can skip to "Using Menus".

EtherMenu User's Guide

If the DOS A> or C> prompt appears, you must start the menu system as shown in the following example. In order to use EtherMenu, you must be logged in to a server with your user name. You must link the system volume to drive D: and your INBOX volume to drive E: . The INBOX volume is the one you use for your data files and for your mail, if you are using EtherMail. These steps are described below.

Follow the example below using your own user name. You can type in upper- or lowercase letters. (For detailed descriptions of the ES commands and more information about linking a drive specifier and a volume, see the EtherShare User's Guide.) The symbol ←↵ represents the ENTER key in all examples in this guide.

The following example works with the recommended EtherMenu installation described in the EtherMenu/PC Administrator's Guide. If the installation has been modified, you will need to get special instructions for starting EtherMenu.

To start EtherMenu:

1. Log in with your EtherShare user name. For example:

```
A> ES LOGIN JENNY ←↵
```

EtherShare confirms that you have successfully logged in to your server:

```
JENNY logged in to SHARE1.  
Your EtherShare drives are C: through F:
```

2. Link the system volume to drive D: by typing:

```
A> ES LINK D: SYS.SYS2 ←↵
```

EtherShare confirms that the volume is linked:

```
SYS.SYS2 linked to D:
```

3. Link your INBOX volume to drive E by typing:

```
A> ES LINK E: INBOX ◀
```

EtherShare confirms that your INBOX volume is linked:

```
INBOX linked to E:
```

4. Change the current drive to E: by typing:

```
A> E: ◀
```

5. Start the menu system by typing:

```
E> ESMENU ◀
```

USING MENUS

The EtherSeries standard menus include a Main Menu, EtherSeries Utilities Menu, DOS Utilities Menu, and Network Volumes and Printers Menu.

Main Menu

The first menu to appear is the Main Menu. It displays categories of tasks you can perform. When you choose one of the options, a second menu presents a list of specific tasks or commands for you to choose.

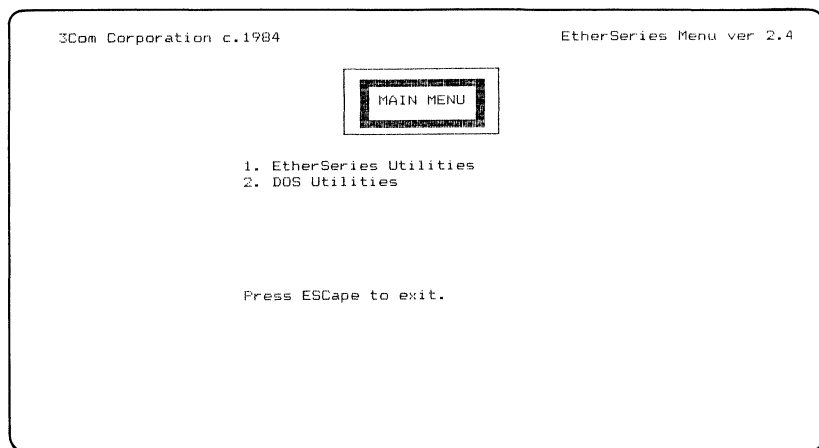


Figure 1-1. Main Menu

To choose an option from a menu, you can use one of three methods:

- Move the cursor to your choice by pressing the ↓ or ↑ cursor movement keys. When the option you want is highlighted, press ←.
- Type the number that corresponds to the option you want. For example, to choose DOS Utilities from the Main Menu, you would type 2.
- Type as many characters as needed to make your choice unique. For example, if the choices are Help, Link, and Logout, you can type H for Help, Li for Link, and Lo for Logout.

After you choose an option, the next menu (a submenu) appears.

You can always cancel what you are doing and return to the previous menu by pressing the **Esc** key. If necessary, you can press **Esc** at the Main Menu to return to the DOS prompt.

EtherSeries Utilities Menu

If you choose option 1 from the Main Menu, the EtherSeries Utilities Menu appears.

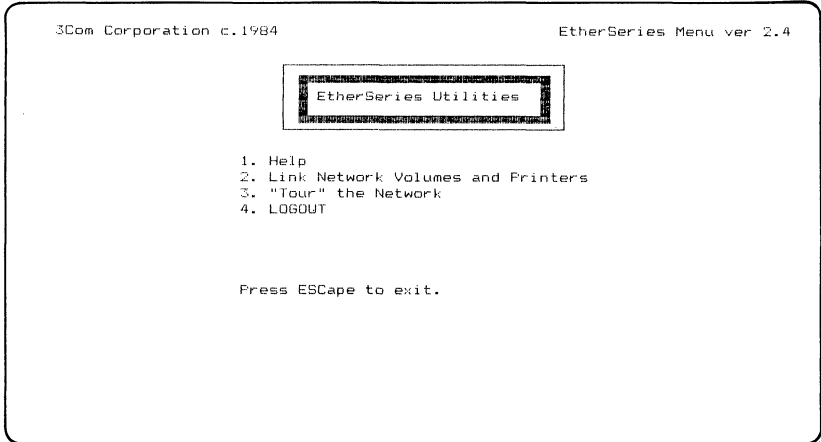


Figure 1-2. EtherSeries Utilities Menu

The choices on the EtherSeries Utilities Menu allow you to do the following:

1. Get helpful information about the EtherSeries Utilities listed on this menu. When you have finished with the Help information, press any key to return to the EtherSeries Utilities Menu.
2. Link network volumes and printers, obtain information about current links, and perform other network operations. Instructions for using this option are given later in this section. See "Performing Network Operations."
3. Take a tour of the EtherSeries network system to see which features are available to you and what the various commands do.
4. Log out; that is, end your connection with the server.

DOS Utilities Menu

If you choose option 2 from the Main Menu, the DOS Utilities Menu appears.

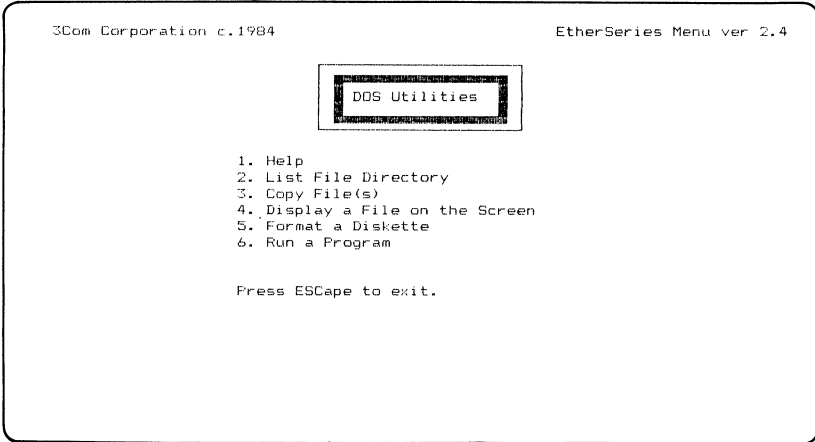


Figure 1-3. DOS Utilites Menu

When you choose an option from this menu, one or two prompts requesting additional information may appear. Type the information and press **←**. Some examples of prompts are given below.

The choices on the DOS Utilities Menu allow you to do the following:

1. Get helpful information about the DOS Utilities listed on this menu. When you are finished with the Help information, press any key to return to the DOS Utilities Menu.

2. List the directory of a specific disk drive. When you are prompted, type the drive specifier followed by a colon and press **↵**. For example:

List Directory for what drive? (C:, D:, etc.): **A:↵**

In this example, the directory for the diskette in drive A: is displayed. Press any key to display more of the directory or to return to the DOS Utilities Menu after displaying the whole directory.

3. Copy a file or a group of files. Use the standard DOS naming conventions to reply to the prompts. Use DOS wild card characters (* and ?) if you want to copy more than one file. Press **↵** to complete your reply. For example:

Enter the drive and name of file(s) to copy: **B:* .DOC↵**
Enter the drive and name of new file(s): **A:↵**

In this example, files on the diskette in drive B: with the file extension .DOC are copied to drive A:. The files are copied with the same names as the original files. This utility operates just like the DOS COPY command. See your DOS manual for more information about how to specify the files you want to copy.

4. Display the contents of a file on the screen. When you are prompted, type the drive specifier followed by a colon and the name of the file and press **↵**. For example:

Enter the drive letter and filename: **A:ACCTLIST↵**

In this example, the file ACCTLIST appears on your screen one page at a time. Press any key to display the next page or to return to the DOS Utilities Menus when you finish displaying the file.

5. Format a diskette. When you are prompted, type the drive specifier and press **↵**. You can include any of the optional parameters of the DOS FORMAT command after the drive specifier. For example:

In what drive is the diskette to be formatted? A:
Enter any optional parameters (/s or /v): /S

In this example, the diskette in drive A: is formatted and the DOS system files are copied to the diskette as requested by parameter /S. (See your DOS manual for information about the optional parameters.)

6. Run a program. When you are prompted, type the name of the program followed by any parameters required. Then press . Use the standard DOS file naming conventions to indicate the program you want to run. For example:

What is the name of the program to run? A:INQUIRY3
Enter additional parameters (RETURN to proceed):

This example runs a program called INQUIRY3, which is on a diskette in drive A:.

NOTE: If a program is located on another drive, typing the drive specifier before the program name allows the menu system to locate only the main program file. It does not change the current drive. Therefore, do not use this menu choice to run a program that consists of multiple files, because only the first file will be located. Also, do not run a DOS command or application that is a .BAT file, because the menu system will not be automatically restarted.

PERFORMING NETWORK OPERATIONS

If you choose option 2 (Network Volumes and Printers) from the EtherSeries Utilities Menu, the Network Volumes and Printers Menu appears.

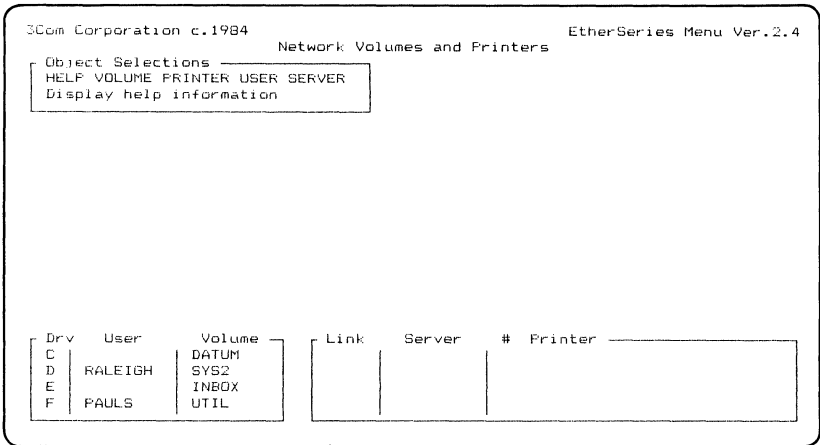


Figure 1-4. Network Volumes and Printers Menu

This menu provides a useful and convenient method for using EtherShare ES commands and EtherPrint EP commands without having to remember the specific command format and parameters.

As you use this menu, refer to the EtherShare and EtherPrint User's Guides for details about the operations you are performing (if you don't already know about them).

The initial Network Volumes and Printers Menu displays the following information:

- Selections you can make from this menu appear in the Object Selections window
- Links that are currently established appear in the status windows at the bottom of the menu

When you use the Network Volumes and Printers Menu to perform a specific operation, you will always follow the same basic steps:

1. Select an object from the Object Selections window.
2. Select an operation from the Operations window.
3. Provide parameters in the parameter window.
4. Carry out the command by pressing **←** .

The information on the following pages describes the basic steps in detail, then discusses using the Network Volumes and Printers Menu in general.

1. Selecting an Object

The items shown in the Object Selections window are the major categories you can choose from this menu. To select an item (or "object"), press either the **→** or **←** cursor movement keys until the item you want is highlighted, then press **←** .

For example, if you want to link to a volume, select **VOLUME** from this menu. A list of specific operations you can perform appears in the Operations window below the Object Selections window. A directory of users and volumes appears in the vertical directory windows at the right of the menu.

2. Selecting an Operation

After you choose a major item from the Object Selections window, specific operations appear in the Operations window. To select the operation you want to perform, press either the → or ← cursor movement keys until the operation you want is highlighted, then press ←↵. For example, to link to a volume, select **LINK** from this window.

3. Providing Parameters

After you choose an item from the Operations window, a parameter window appears below the Operations window. You use the parameter window to fill in specific details about the operation you want to perform -- for example, the name of the volume you want to link to.

To enter information in a parameter window, press the Tab key to move the cursor to the appropriate field, then type the specific information you want to use.

For example, to link to a volume called INBOX, move the cursor to the **Volume** field in the parameters window and type **inbox**. For complete information on the parameters you can use with the ES and EP commands, see the EtherShare and EtherPrint User's Guides.

4. Carrying Out a Command

When you have selected an item from the Object Selections window, selected a specific operation from the Operations window, and supplied the necessary parameters for the command, press ←↵ to carry out the command.

If the command is successful, the parameter window disappears and the cursor moves back to the Operations window. The status window at the bottom of the menu is updated to reflect any new links you have established. Press **Esc** if you want to go back to the Object Selections window.

If the command is not successful, an error message appears in a window at the bottom of the menu. For a description of error messages and recovery procedures, see the Error Messages appendix in the EtherShare or EtherPrint User's Guide.

Using the Network Volumes and Printers Menu

The following is a general description of using the Network Volumes and Printers Menu. Use this information in combination with steps 1 through 4 on the previous pages. Regardless of the operation you want to perform, you will follow the same steps and use the Network Volumes and Printers Menu in the same way.

Getting Help

At any time while you are using the Network Volumes and Printers Menu, you can display helpful information about the operation you are performing. Press either the → or ← cursor movement key until the word HELP in the Object Selections window is highlighted, then press ←| . Help information appears at the right of the menu. When you have finished with this information, press any key to remove it from the screen.

Moving the Cursor

- In the Object Selections or Operations window, move the cursor to the right with the → cursor movement key and to the left with the ← cursor movement key.
- In a parameter window, move the cursor to the next field with the **Tab** key and to the previous field with **Shift-Tab**.
- In a vertical directory window, move the cursor down with the ↓ cursor movement key and up with the ↑ cursor movement key.
- If there is more than one directory window, move the cursor to the next window by pressing the plus (+) key on the numeric keypad (not the plus key on the top row of the keyboard).

- In a directory window, press the **Home** key to move the cursor to the first item listed in the window; press the **End** key to move the cursor to the last item.
- In a directory window, press the **PgUp** key to display the previous window of information; press the **PgDn** key to display the next window.

Changing Directories

In the vertical directory window, press the \uparrow or \downarrow cursor movement keys to highlight the user whose volumes you want to display. Then press the asterisk (*) on the **PrtSc** key at the lower right of the keyboard. You must use the asterisk on the **PrtSc** key; the asterisk on the top row of the keyboard cannot be used to display a user's volumes.

Entering Parameters

In the parameter window, press the **Tab** key to move the cursor to the appropriate field and type the parameter you want to use. If there is more than one parameter, move the cursor and type parameters in all necessary fields. If you enter an invalid character, EtherMenu beeps and you must enter an appropriate character (see the EtherShare and EtherPrint User's Guides for complete information on parameters).

If you want to edit an entry in a field, press the **Backspace** key to erase characters and move the cursor to the left. You can then retype the correct characters. If you want to erase the complete entry from a field, move the cursor into the field and press the space bar.

If the parameter you want to use appears in the vertical directory window, you can select it from this window instead of typing it in the parameter window. To select a parameter from the directory window, press the \uparrow or \downarrow cursor movement keys to highlight the item you want.

When you have entered all necessary parameters, press \leftarrow to carry out the command. See Carrying Out a Command earlier in this section.

Cancelling a Selection or Command

To cancel the current selection or command, press the **Esc** key. Depending on the window you are using, **Esc** has

different results:

- In a parameter window, **Esc** returns you to the Operations window.
- In the Operations window, **Esc** cancels selection of this operation and returns you to the Object Selections window.
- In the Object Selections window, **Esc** returns you to the EtherSeries Utilities Menu.

LEAVING ETHERMENU

If the Network Volumes and Printers Menu is displayed, press the **Esc** key to return to the EtherSeries Utilities Menu. From the EtherSeries Utilities Menu, press **Esc** to return to the Main Menu. When the Main Menu is displayed, press **Esc** to leave EtherMenu and return to DOS.

APPENDIX A**ERROR MESSAGES**

This appendix lists the error messages that may appear as you use EtherMenu and recommends what to do to recover from an error condition. Error messages that appear while you are using the DOS or EtherSeries Utilities Menus may indicate that there is a problem with the way your menu system has been customized. The EtherMenu/PC Administrator's Guide gives complete instructions on customizing the menu system.

If you see EtherShare or EtherPrint error messages while you are using the Network Volumes and Printers Menu, refer to the Error Messages appendix in the appropriate User's Guide.

Error Message**Meaning/Action**

| | |
|---|--|
| Bad command or filename | DOS is unable to locate the command you have typed or a command that EtherMenu is using. Check the command you typed. If you have used the correct command, see Appendix C of the EtherMenu/PC Administrator's Guide for a recovery procedure. |
| Can't create RUNIT.BAT - Press any key to Exit. | A disk drive may not be in a ready state or you may have started EtherMenu from a public volume (read-only). Press a key to exit EtherMenu and see Appendix C of the EtherMenu/PC Administrator's Guide for a recovery procedure. |

Error Message

Meaning/Action

Drive Not Ready (Abort,
Retry, Ignore)

DOS is unable to read or write to a drive. Check the diskettes in the drives you are using and make sure the doors are closed. Type R to retry. If the message appears again, type A to abort and then check the drive to determine the cause of the problem.

Invalid Menu Data File - ...

Several messages of this type may appear. Note the circumstances in which the error occurred and see Appendix C of the EtherMenu/PC Administrator's Guide for a recovery procedure.

Unable to open MENU.DAT -
Please run MAKEMENU first

EtherMenu cannot locate the file containing the menus. You may be running the menu system from the wrong drive or directory or the file may have been accidentally erased. Make sure the current drive is E: and try starting again. If the message reappears, see Appendix C of the EtherMenu/PC Administrator's Guide for a recovery procedure.

INDEX

C

 Cancelling,
 operation, 1-4
 selection or command, 1-13
 Carrying out a command, 1-11
 Choosing a menu option, 1-4
 Command,
 cancelling, 1-13
 carrying out, 1-11
 Copying files, 1-7
 Cursor,
 moving on Network Volumes and Printers Menu, 1-13

D

 Diskette, formatting, 1-7
 Displaying a file, 1-7
 Directory, listing, 1-7
 DOS Utilities Menu, 1-6

E

 Entering parameters, 1-11, 1-13
 Error messages, A-1
 Esc key, used in menus, 1-4, 1-13
 EtherMenu,
 leaving, 1-14
 starting, 1-1, 1-2
 EtherPrint commands,
 from Network Volumes and Printers Menu, 1-9/1-14
 EtherSeries Utilities Menu, 1-5
 EtherShare commands,
 from Network Volumes and Printers Menu, 1-9/1-14
 Executing a command, 1-11

F

 Files,
 copying, 1-7
 displaying, 1-7
 listing, 1-7
 Formatting a diskette, 1-7

H

Help,

- on DOS Utilities Menu, 1-6
- on EtherSeries Utilities Menu, 1-5
- on Network Volumes and Printers Menu, 1-12

I

Item,

- selecting from a menu, 1-4
- selecting from a window, 1-13

L

- Leaving EtherMenu, 1-14
- Listing files, 1-7
- Logging out, 1-5

M

- Main Menu, 1-3, 1-4

Menus,

- choosing an option, 1-4
- DOS Utilities, 1-6
- EtherSeries Utilities, 1-5
- Main, 1-3, 1-4

Moving the cursor,

- on Network Volumes and Printers Menu, 1-12, 1-13

N

Network

- performing operations, 1-9/1-14
- touring, 1-5

Network Volumes and Printers Menu, 1-9

- cancelling a selection or command, 1-13
- carrying out a command, 1-11
- displaying, 1-5, 1-9
- entering parameters, 1-11, 1-13
- getting help, 1-12
- moving the cursor, 1-12
- providing parameters, 1-11, 1-13
- selecting an item, 1-13
- selecting an object, 1-10
- selecting an operation, 1-11
- using, 1-12/1-14

O

Object Selection window, 1-10
Operations window, 1-11
Option, choosing from a menu, 1-4

P

Parameters window, 1-11
Performing network operations, 1-9/1-14
Printers, Network Volumes and Printers Menu, 1-9/1-14
Program, running, 1-8
Providing parameters, 1-11, 1-13

R

Running a program, 1-8

S

Selecting,
 item in a window, 1-13
 menu item, 1-4
 object, 1-10
 operation, 1-11
Starting EtherMenu, 1-1, 1-2

T

Touring the network, 1-5

U

Utilities Menus,
 DOS, 1-6
 EtherSeries, 1-5

V

Volumes, Network Volumes and Printers Menu, 1-9/1-14

