

3+Open™ MS-DOS® LAN Manager
User Reference

3

+

Open

3+Open MS-DOS LAN Manager User Reference

A member of the 3+Open family of products.

Copyright© 3Com Corporation, 1989. All rights reserved.
3165 Kifer Road
Santa Clara, CA 95052-8145
Printed in the U.S.A.

Manual Part No. 5148-00
Published August 1989

Copyright Statement

No part of this manual may be reproduced in any form or by any means or used to make any derivative work (such as translation, transformation, or adaptation) without permission from 3Com Corporation by the United States Copyright Act of 1976, as amended.

Changes are made periodically to the information herein; these changes will be incorporated in new editions of this publication. Contents are the property of 3Com Corporation. All rights reserved.

3Com Corporation provides this guide without warranty of any kind, either implied or expressed, including, but not limited to, the implied warranties of merchantability and fitness for a particular purpose. 3Com may make improvements or changes in the product(s) and/or the program(s) described in this manual at any time.

Portions of this manual are reproduced in whole or in part with permission from Microsoft Corporation.

Trademarks

3Com and 3+ are registered trademarks of 3Com Corporation. 3+Open is a trademark of 3Com Corporation.

Microsoft, MS, Microsoft Word, and MS-DOS are registered trademarks of Microsoft Corporation. IBM and OS/2 are trademarks of International Business Machines Corporation. Apple, LaserWriter, and Macintosh are registered trademarks of Apple Computer, Incorporated. MacDraw is a registered trademark of Claris Corporation.

Recognition

Writer: Robert Shepherd. Editors: Ruth Hartman and Nancy Newlin. Production: Cate Lush. Engineering information: Les Cheong, Ray Marshall, and Dan Myers.

This manual was produced by 3Com using 3+® for Macintosh (3Com), Microsoft Word® 3.02, and MacDraw® II software with the Apple® LaserWriter® Plus on a Macintosh® netstation.

Table of Contents

Preface

Before You Begin	xiv
Contents of This Reference	xv
Notational Conventions	xvi
Notational Convention Examples	xvi
Text Examples with Commands	xvi
Text Examples with the LAN Manager Screen	xvii
Procedural Conventions	xvii
Finding Further Information	xviii

Chapter 1: About MS-DOS LAN Manager

MS-DOS LAN Manager Basic	1-2
MS-DOS LAN Manager Enhanced	1-2
Startup and Security	1-3
Logging On to the Local Area Network	1-3
Automatic Startup	1-4
Using MS-DOS LAN Manager	1-4
MS-DOS LAN Manager Commands	1-5
LAN Manager Screen	1-5
Getting More Information	1-6
On-Line Help	1-6
The NET HELP Command	1-6
Help With the LAN Manager Screen	1-7
Error Messages	1-8

Chapter 2: MS-DOS LAN Manager Command Reference

How to Use This Chapter 2-2

Using MS-DOS LAN Manager Commands 2-3

Abbreviations 2-3

Service Names 2-3

Option Names 2-4

Commands That Start Services Automatically 2-4

Starting the Workstation Service Automatically 2-4

Starting the Messenger Service Automatically 2-5

Logging On Automatically 2-5

Using Passwords with Commands 2-6

Typing a Password 2-6

Using the * Option 2-7

Using /yes and /no 2-8

Command Reference Pages 2-8

Basic Commands 2-11

LOGOFF 2-12

Syntax 2-12

Comments 2-12

Example 2-13

See Also 2-13

LOGON 2-14

Syntax 2-14

Comments 2-16

General Usage 2-17

Logging On to Mixed Networks 2-18

Logging On to the 3+Open Network 2-20

Logging On to the 3+Name Service 2-21

Changing Your Password 2-21

Automatic Logon 2-22

Example 2-22

See Also 2-22

NET CONTINUE 2-23

Syntax 2-23

Comments 2-24

Example 2-24

See Also 2-24

NET HELP 2-25
 Syntax 2-25
 Comments 2-26
 Example 2-27
 See Also 2-27

NET NAME 2-28
 Syntax 2-28
 Comments 2-28
 Example 2-28
 See Also 2-28

NET PAUSE 2-29
 Syntax 2-29
 Comments 2-30
 Example 2-30
 See Also 2-30

NET PRINT 2-31
 Syntax 2-31
 Comments 2-32
 Example 2-34
 See Also 2-34

NET START WORKSTATION 2-35
 Syntax 2-35
 Comments 2-35
 Example 2-35
 See Also 2-35

NET USE 2-36
 Syntax 2-36
 Comments 2-37
 Example 2-39
 See Also 2-40

Enhanced Commands 2-41

NET 2-43
 Syntax 2-43
 Comments 2-43
 Example 2-44
 See Also 2-44

NET ACCESS 2-45
 Syntax 2-45
 Comments 2-48
 Example 2-50
 See Also 2-50
NET ADMIN /COMMAND 2-51
 Syntax 2-51
 Comments 2-51
 Example 2-53
 See Also 2-53
NET COPY 2-54
 Syntax 2-54
 Comments 2-55
 Example 2-57
 See Also 2-57
NET HELP 2-58
 Syntax 2-58
 Comments 2-59
 Example 2-60
 See Also 2-60
NET LOAD 2-61
 Syntax 2-61
 Comments 2-62
 About Profile Files 2-62
 Example 2-63
 See Also 2-63
NET LOGOFF 2-64
 Syntax 2-64
 Comments 2-64
 Example 2-65
 See Also 2-65
NET LOGON 2-66
 Syntax 2-66
 Comments 2-66
 Example 2-68
 See Also 2-68

NET MOVE 2-69
 Syntax 2-69
 Comments 2-69
 Example 2-70
 See Also 2-70
NET NAME 2-71
 Syntax 2-71
 Comments 2-72
 Example 2-73
 See Also 2-73
NET PASSWORD 2-74
 Syntax 2-74
 Comments 2-75
 Example 2-76
 See Also 2-76
NET SAVE 2-77
 Syntax 2-77
 Comments 2-78
 About Profile Files 2-78
 Example 2-79
 See Also 2-79
NET SEND 2-80
 Syntax 2-80
 Comments 2-81
 Example 2-82
 See Also 2-82
NET START MESSENGER 2-83
 Syntax 2-83
 Comments 2-83
 Example 2-84
 See Also 2-84
NET START NETPOPUP 2-85
 Syntax 2-85
 Comments 2-85
 Example 2-85
 See Also 2-86
NET START WORKSTATION 2-87
 Syntax 2-87
 Comments 2-89
 Example 2-90

NET VIEW 2-91
Syntax 2-91
Comments 2-92
Example 2-93
See Also 2-93

Chapter 3: LAN Manager Screen Reference

Using the LAN Manager Screen 3-3
 Netstation Information 3-4
 Logging On 3-5
 Selecting Menus and Menu Items 3-6
 Using Help 3-7
 Using Dialog Box Elements 3-8
 Menus and Dialog Boxes in This Chapter 3-11
View Menu 3-12
 View -> Network Servers 3-12
 Servers Available on Network 3-13
 Listing a Server's Resources 3-14
 Resources at (Server) 3-15
 Using a Network Resource 3-17
 Stop Using a Network Resource 3-17
 Use the Resource (Network Path) 3-18
 Connecting to a Shared Resource 3-19
 View -> This Workstation 3-20
 Network Resources in Use at Your Workstation 3-21
 Adding a New Connection 3-22
 Deleting a Connection 3-23
 Getting More Information About a Network Resource 3-23
 Use a Network Resource 3-24
 Connecting to the Network Resource 3-26
 Accessing (Network Path) 3-27
 Supplying a Password 3-28
 Usage Information for a Network Resource 3-29

View Menu (continued)

- View -> Print Queues 3-30
 - Show Print Queues For 3-31
 - Listing a Server's Printer Queues 3-32
 - Print Queues for (Server) 3-33
 - Changing the Status of Your Print Job 3-34
 - Getting More Information About a Job or Queue 3-35
 - Printing Options for Job 3-36
 - Printing Options for Queue 3-38

Message Menu 3-40

- Message -> Send 3-40
 - Send a Message 3-41
 - Sending a Message 3-43
- Message -> Aliases 3-44
 - Aliases for Messaging 3-44
 - Adding an Alias 3-45
 - Deleting a Message Alias 3-45
 - Add an Alias 3-46

Config Menu 3-48

- Config -> Logon 3-48
 - Log Into Network 3-49
 - Logging on to MS-DOS LAN Manager 3-50
- Config -> Load Profile 3-51
 - Load Configuration 3-51
 - Loading a Profile 3-53
 - See Also 3-54
- Config -> Save Profile 3-54
 - Saving Your Current Configuration 3-56
 - See Also 3-57
- Config -> Change password 3-57
 - Change Logon Password at a Server 3-57
 - Changing Your Password 3-59
 - See Also 3-59

Appendix A: Error Messages

LOGON/LOGOFF Error Messages A-1

3+Name Service Error Messages A-2

General LAN Manager Errors A-4

Alert Service Messages A-9

Net Service Messages A-9

Command Syntax Messages A-10

DOS LAN Manager Application Error Messages A-10

Index

List of Figures

Figure	Title
3-1	LAN Manager Screen 3-3
3-2	Log Into Network Dialog Box 3-5
3-3	View Menu 3-6
3-4	Using Help Dialog Box 3-7
3-5	Sample Dialog Box 3-8
3-6	Servers Available on Network Dialog Box 3-13
3-7	Resources at (Server) Dialog Box 3-15
3-8	Use the Resource (Network Path) Dialog Box 3-18
3-9	Network Resources in Use at Your Workstation Dialog Box 3-21
3-10	Use a Network Resource Dialog Box 3-24
3-11	Accessing (Network Path) Dialog Box 3-27
3-12	Usage Information for a Network Resource Dialog Box 3-29
3-13	Show Print Queues For Dialog Box 3-31
3-14	Print Queues for (Server) Dialog Box 3-33
3-15	Printing Options for Job Dialog Box 3-36
3-16	Printing Options for Queue Dialog Box 3-38
3-17	Send a Message Dialog Box 3-41
3-18	Aliases for Messaging Dialog Box 3-44
3-19	Add an Alias Dialog Box 3-46
3-20	Log Into Network Dialog Box 3-49
3-21	Load Configuration Dialog Box 3-52
3-22	Save Configuration Dialog Box 3-55
3-23	Change Logon Password at a Server Dialog Box 3-58

List of Tables

Table	Title
2-1	MS-DOS LAN Manager Basic Commands 2-11
2-2	MS-DOS LAN Manager Enhanced Commands 2-41

Preface

This *3+Open MS-DOS LAN Manager User Reference* describes individual commands and operations for both the Basic and Enhanced versions.

You should refer to this manual for help with specific tasks if you are using a netstation with 3+Open MS-DOS LAN Manager. A netstation is a computer linked to a local area network, using network resources but not offering its own resources to other computers.

This introduction explains how to use this reference. It also gives an overview of other manuals you can turn to for help in using MS-DOS LAN Manager.

Before You Begin

Before using this reference, you should read the *3+ Open MS-DOS LAN Manager User Guide*. This manual teaches you how to use MS-DOS LAN Manager and explains concepts, procedures, and terms not reviewed here. In addition to reading the manual, you should also:

- Feel comfortable using the MS-DOS or PC-DOS operating systems.
- Be able to create and work with files and directories.
- Have MS-DOS LAN Manager installed on your computer (see your system administrator if you have questions about this).
- Know if you are using the Basic or Enhanced version of MS-DOS LAN Manager.
- Be comfortable either typing MS-DOS LAN Manager commands at the MS-DOS prompt or, if you are using MS-DOS LAN Manager Enhanced, using the LAN Manager screen.

For information about the differences between Basic and Enhanced MS-DOS LAN Manager, see Chapter 1: About MS-DOS LAN Manager.

Contents of This Reference

The following list explains the chapters in this reference.

Chapter	Contents
Chapter 1: About MS-DOS LAN Manager	Features of MS-DOS LAN Manager and the differences between the Basic and Enhanced versions. This chapter also briefly explains how to start and use 3+Open MS-DOS LAN Manager and how to get help.
Chapter 2: MS-DOS LAN Manager Command Reference	MS-DOS LAN Manager commands you can type at the MS-DOS prompt. The first section in this chapter explains Basic commands, which can be used with either Basic or Enhanced MS-DOS LAN Manager; the second section explains commands only available with the Enhanced version. The commands are listed alphabetically by section.
Chapter 3: LAN Manager Screen Reference	LAN Manager screen, its menus, and dialog boxes. The reference is arranged in the order of the menus as they appear across the menu bar. The dialog boxes are presented in hierarchical order after their menus.
Appendix A: Error Messages	MS-DOS LAN Manager error messages and comments that may appear at the MS-DOS prompt or in LAN Manager screen message boxes.

Notational Conventions

As you read this reference, keep in mind the following conventions to help you distinguish different types of text:

Text Element	Indicates
ALL CAPITAL LETTERS	Command names and filenames.
Bold	New terms.
Bold Courier typeface	Input you enter.
Regular Courier typeface	Screen text.
[Brackets]	Nonalphabetic key names, such as [Enter], or command options.
<i>Italics</i>	Variable command option names.

Notational Convention Examples

To show you how different types of text in this reference help you perform tasks with MS-DOS LAN Manager, this section gives you examples of usage with both MS-DOS LAN Manager commands and the LAN Manager screen.

Text Examples with Commands

MS-DOS LAN Manager commands are typed at the MS-DOS prompt. (The syntax for each command is detailed in Chapter 2: MS-DOS LAN Manager Command Reference.) The syntax definitions in Chapter 2 include "bubble" diagrams which give you a definitive roadmap to follow to use each command and its options correctly.

Text Examples with the LAN Manager Screen

From the LAN Manager screen, you perform tasks by selecting menus and menu items, which take you to dialog boxes. Dialog boxes have command buttons, text fields, and other features that let you accomplish a task easily.

To reach a dialog box, you must follow an access path, which begins with a menu and moves through a menu item to the dialog box. Arrows are used to show the progression through an access path. For example, the Use a Network Resource dialog box is reached through the View menu. Its access path is shown as:

View->This workstation->Add use

Each dialog box reference page in Chapter 3: LAN Manager Screen Reference shows the access path needed to reach the dialog box.

Procedural Conventions

Information you should enter is shown in blue. Terms shown in italics should be replaced with specific information. For example:

```
logon username password␣
```

means that you type the command LOGON exactly as shown, and substitute specific information for the general terms shown in italics. In this example, you would substitute your own user name where the line shows the word *username*, and your own password where the line shows *password*. Press [Enter] at the end of the command.

Finding Further Information

In addition to this manual, the following manual is included with MS-DOS LAN Manager:

- *3+Open MS-DOS LAN Manager User Guide*, a procedural guide for using MS-DOS LAN Manager on a netstation. This manual provides you with tutorials and instructions for MS-DOS LAN Manager tasks.

Chapter 1: About MS-DOS LAN Manager

3+Open MS-DOS LAN Manager lets you link your computer to a local area network and use shared resources such as disk drives and printers. Two versions of MS-DOS LAN Manager are available: **Basic** and **Enhanced**. Each is explained in this reference.

The capabilities of the Basic and Enhanced versions are reflected in their names. MS-DOS LAN Manager Basic lets you use shared resources by typing commands at the MS-DOS prompt. MS-DOS LAN Manager Enhanced does everything Basic does and more—it includes commands not found in the Basic version, and also lets you work with menus and dialog boxes at the LAN Manager screen instead of typing commands. MS-DOS LAN Manager Enhanced lets you send and receive messages, and automatically connect to several shared resources at once.

MS-DOS LAN Manager Basic

With MS-DOS LAN Manager Basic, you can:

- Keep your workgroup's data in a secure and centralized location.
- Add your personal computer to an existing MS-DOS or OS/2™ network.
- Read, revise, and create files on other computers.
- Use applications—such as Microsoft Word—with files on other computers.
- Use resources—like disks or printers—attached to servers.
- Display printer queues.
- Get on-line help.

MS-DOS LAN Manager Enhanced

With the advanced version of MS-DOS LAN Manager—called MS-DOS LAN Manager Enhanced—you can choose between typing commands at the MS-DOS prompt and using a full-screen interface. MS-DOS LAN Manager Enhanced gives you access to all of the features of MS-DOS LAN Manager Basic, plus several others. You can:

- Work with menus and dialog boxes on the LAN Manager screen instead of typing commands.
- Send and receive messages across the local area network with the Messenger and Netpopup services.
- Put together a customized set of connections—called a profile—so that you can connect to a number of frequently used resources with one command.
- Move and copy files from one place to another on the local area network.

Startup and Security

Regardless of whether you are using the Basic or the Enhanced version, the first step in using MS-DOS LAN Manager is to start the software on your computer. To do this, you need to start the **Workstation** service, which links your computer to the local area network as a netstation. The 3+Open MS-DOS LAN Manager setup program puts the following line in your AUTOEXEC.BAT startup file to perform startup:

```
net start workstation
```

You may also start the Workstation service by typing this command at the MS-DOS prompt. This command identifies your computer to the local area network so that you can perform networking tasks using either MS-DOS LAN Manager commands or, if you have the Enhanced version, the LAN Manager screen. See also Chapter 5: Startup and Security in the *3+Open MS-DOS LAN Manager User Guide* for a discussion of starting MS-DOS LAN Manager and commands you can include in AUTOEXEC.BAT.

If you are using MS-DOS LAN Manager Enhanced, you can also start two other services on your netstation: the **Messenger** service and the **Netpopup** service. For more information about these services, see the NET START MESSENGER and NET START NETPOPUP command reference pages in Chapter 2: MS-DOS LAN Manager Command Reference.

Logging On to the Local Area Network

Once you have identified your computer to the local area network, the next step is to identify yourself. To do this, you must log on using your user name and logon password. The NETSETUP program installed the necessary commands in your netstation's AUTOEXEC.BAT file, so that logging on will be performed automatically each time you start your netstation.

For example, Mary Sullivan's user name is *marys*, and her logon password is *wanderer*. Her netstation's AUTOEXEC.BAT file contains the following command to log on to the local area network:

```
logon marys wanderer
```

Once you start the Workstation service and log on to the local area network, you are ready to use local area network resources and perform other tasks with MS-DOS LAN Manager.

If your password or user name change, you can edit the LOGON line in your AUTOEXEC.BAT file accordingly. Refer to the LOGON command in Chapter 2: MS-DOS LAN Manager Command Reference for more information.

Automatic Startup

MS-DOS LAN Manager performs some logon tasks for you automatically. For instance, when you request use of a server, MS-DOS LAN Manager remembers your user name and password, and automatically sends them along for verification before logging you on to the server. See Chapter 2: MS-DOS LAN Manager Command Reference and Chapter 3: LAN Manager Screen Reference for more details on logging on.

Using MS-DOS LAN Manager

Once you have started the Workstation service, you are ready to perform local area network tasks. If you are using MS-DOS LAN Manager Enhanced, there are two ways to perform tasks:

- By typing MS-DOS LAN Manager commands at the MS-DOS prompt.
- By selecting options from menus and dialog boxes on the LAN Manager screen.

MS-DOS LAN Manager Commands

If you are using MS-DOS LAN Manager Basic, typing commands at the MS-DOS prompt is the only way you can use the system. Even if you have the Enhanced version, you may prefer to type commands instead of using the menus and dialog boxes on the LAN Manager screen. It can be the quicker alternative if you are well acquainted with the commands and their options, and it lets you perform certain tasks—such as moving files—that cannot be done with the LAN Manager screen.

You can use many commands regardless of whether you have the Basic or the Enhanced version of MS-DOS LAN Manager. However, some commands are only available with the Enhanced version. For more information about MS-DOS LAN Manager commands and how to use them, see Chapter 2: MS-DOS LAN Manager Command Reference. The chapter is divided into an introduction and two sections. The first section explains Basic commands, which are available to all users, and the second section explains Enhanced commands.

See also the *3+Open MS-DOS LAN Manager User Guide* for more information about performing local area network tasks using MS-DOS LAN Manager commands. If you are already familiar with the 3Com 3+ system, you will notice that many MS-DOS LAN Manager commands are similar.

To automate local area network tasks, you can place MS-DOS LAN Manager commands in batch files, such as your AUTOEXEC.BAT file.

LAN Manager Screen

The LAN Manager screen is a windowed user interface that organizes MS-DOS LAN Manager commands into a system of menus. It is available only to users with MS-DOS LAN Manager Enhanced.

Menus and dialog boxes provide you with various options from which you can choose without having to remember specific commands. Many people find that performing tasks using the LAN Manager screen is easier and more convenient than typing commands. For more information about using the LAN Manager screen, see the *3+Open MS-DOS LAN Manager User Guide*.

For more information about menus and dialog boxes contained within the LAN Manager screen, see Chapter 3: LAN Manager Screen Reference.

Getting More Information

MS-DOS LAN Manager provides more information when you need it by displaying information or error messages and providing on-line help for both MS-DOS LAN Manager commands and the LAN Manager screen.

On-Line Help

Whether you are performing local area network tasks using MS-DOS LAN Manager commands or the LAN Manager screen, you can get additional information to help you as you work.

The NET HELP Command

MS-DOS LAN Manager provides a special help command to assist you in using MS-DOS LAN Manager commands (commands you type at the MS-DOS prompt or use in a batch file). To get information about using a particular MS-DOS LAN Manager command, type NET HELP, followed by the command name. If the command begins with the word NET, type NET HELP followed only by the second word of the command. For example, if you want more information about using the NET USE command, type:

```
net help use
```

MS-DOS LAN Manager displays the following information:

The syntax of this command is:

```
NET USE [devicename | \\computername\sharename]  
NET USE [devicename] \\computername\sharename [password]  
NET USE {devicename | \\computername\sharename} /DELETE
```

The NET USE command connects a netstation's local devicename to a server's shared resource.

See the MS-DOS LAN Manager User Reference for more information about this command.

You can also type NET HELP by itself. The following list appears to show you more about the help command:

The syntax of this command is:

```
NET HELP [topic]
```

Help is available on:

NET

Help on the following NET commands is available:

ACCESS	CONTINUE	COPY
HELP	LOAD	LOGOFF
MOVE	PASSWORD	LOGON
PRINT	SEND	START
USE VIEW		

Help is also available on these special topics:

NAMES SYNTAX

Help With the LAN Manager Screen

If you are using MS-DOS LAN Manager Enhanced and you are working in the LAN Manager screen, you can press [F1] to get context-sensitive help.

This means, for example, that if you are working in the Use a Network Resource dialog box and press [F1], information is displayed about using that particular dialog box. This information is accompanied by an index from which you can choose topics of interest to you, including general information about how to use menus and dialog boxes.

Error Messages

If you type an MS-DOS LAN Manager command with an option that MS-DOS LAN Manager does not recognize, you will see an error message in this form:

NET####: *Message text*.

is a four-digit number that uniquely identifies the MS-DOS LAN Manager message. *Message text* is a short message that describes the error. For a complete listing of MS-DOS LAN Manager error messages that may appear at the MS-DOS prompt, see Appendix A: Error Messages.

When you are working in the LAN Manager screen, messages are displayed by **message boxes**. Some of the messages displayed are the same as those displayed at the MS-DOS prompt. Other messages displayed are specific to the LAN Manager screen. To get more information about a message displayed by the LAN Manager screen, press [F1].

Chapter 2: MS-DOS LAN Manager Command Reference

3+Open MS-DOS LAN Manager lets you perform LAN Manager operations by typing commands at the MS-DOS prompt. If you are using MS-DOS LAN Manager Basic, this is the only way you can operate the system.

If you have the Enhanced version of MS-DOS LAN Manager, you can perform most of the same operations using the LAN Manager screen, described in Chapter 3: LAN Manager Screen Reference. The option of typing MS-DOS LAN Manager commands is useful if:

- You are familiar with the 3Com 3+ command-line interfaces.
- You are an expert user who feels more comfortable typing commands than using menus in a full-screen interface (LAN Manager screen).
- You want to add MS-DOS LAN Manager commands to batch files.

How to Use This Chapter

This chapter is divided into three major sections:

- "Using MS-DOS LAN Manager Commands" provides general information about how to use all MS-DOS LAN Manager commands. You should read this section regardless of whether you use MS-DOS LAN Manager Basic or MS-DOS LAN Manager Enhanced.
- "Basic Commands" describes the commands that are part of MS-DOS LAN Manager Basic. Users of the Enhanced version will also use this section, because MS-DOS LAN Manager Enhanced includes all the Basic commands.
- "Enhanced Commands" describes the commands which are part of MS-DOS LAN Manager Enhanced, in addition to the commands included in Basic. Only users of the Enhanced version need to use this section.

The command reference sections each begin with a table of the commands applicable to the version of MS-DOS LAN Manager discussed in that section. Commands are listed alphabetically within each section; each command reference explains the usage, syntax, and available options for the command.

Using MS-DOS LAN Manager Commands

You should know a few rules and guidelines to help you best use the MS-DOS LAN Manager commands described in this chapter.

This section describes abbreviations you can use in some commands, and shows how to use passwords. Commands that depend on others—for example, commands that must be run before other commands—are described, along with prompts that will help you remember these dependencies. MS-DOS LAN Manager commands may be used in batch files; this section provides some useful guidance for doing so.

Abbreviations

You may use abbreviations when typing MS-DOS LAN Manager commands. Although the command reference pages in this chapter spell out all command names, option names, and service names, MS-DOS LAN Manager allows you to abbreviate many of these for your convenience.

Service Names

MS-DOS LAN Manager allows you to use abbreviations and synonyms for the following MS-DOS LAN Manager services:

Service	Abbreviations, synonyms
Workstation	wksta, work, redirector, redir, rdr
Messenger	msg, receiver, rcv

Option Names

MS-DOS LAN Manager also allows you to type any unambiguous abbreviation for a command option. This means you must type enough letters in the option's name to distinguish the option you choose from other options for that command.

For example, if you are using a command whose possible options are `/read` and `/send`, you may type `/r` instead of `/read`, and `/s` instead of `/send`. However, if the command's options were `/read` and `/redo`, MS-DOS LAN Manager would not accept `/r`, but would accept either `/rea` for `/read`, or `/red` for `/redo`.

The command reference pages in this chapter list command options in alphabetical order, making it easier for you to compare similar option names.

Commands That Start Services Automatically

Some MS-DOS LAN Manager commands will not work unless you have started a service or performed another command first. For example, you must start the Workstation service before you can display the LAN Manager screen.

In many cases, MS-DOS LAN Manager automatically prompts you to perform the prerequisite task.

Starting the Workstation Service Automatically

The Workstation service must be started before any of the following commands can run:

NET	NET LOAD	NET LOGON
NET NAME	NET PRINT	NET SEND
NET USE	NET VIEW	

When you type one of these commands, MS-DOS LAN Manager checks to see if the Workstation service is running. If it is not, MS-DOS LAN Manager displays the following prompt:

```
The WORKSTATION is not started.  
Is it OK to start it? (Y/N) [Y]:
```

If you type Y (or press [Return], since Y is the default response noted in brackets), MS-DOS LAN Manager first starts the Workstation service, then runs the command you typed. If you type N, MS-DOS LAN Manager does not start the Workstation service or run the command you typed.

Starting the Messenger Service Automatically

The Messenger service must be running before you can use the NET SEND command. When you type NET SEND, MS-DOS LAN Manager checks to see if that service is running. If it is not, MS-DOS LAN Manager displays the following prompt:

```
The MESSENGER is not started.  
Is it OK to start it? (Y/N) [Y]:
```

If you type Y, MS-DOS LAN Manager starts the Messenger service, then runs the command you typed. If you type N, MS-DOS LAN Manager will not run the command you typed, and the Messenger service is not started.

Logging On Automatically

When you type a command that requires you to be logged on to the local area network first, MS-DOS LAN Manager Enhanced (but not MS-DOS LAN Manager Basic) checks to see if you are logged on. If you are, MS-DOS LAN Manager Enhanced runs the command you typed. If you are not logged on, MS-DOS LAN Manager offers to log you on to the local area network by reading your user name from the LANMAN.INI file on your computer:

```
Type your username, or press ENTER if it is <user name>:  
Type your password:
```


Automatic logon can log you on to the 3+Open network only; it cannot log you on to a 3+ network, if you are working in a mixed-network environment. Refer to the LOGON command later in this chapter for more information.

You must be logged on to the local area network before you can use any of the following four commands:

NET NET ADMIN /COMMAND
NET USE NET VIEW

If you are using MS-DOS Manager Enhanced, using these commands before you are logged on will cause MS-DOS LAN Manager to automatically log you on. If you are using MS-DOS LAN Manager Basic, you must use the LOGON command before you use these four commands.

Using Passwords with Commands

Some commands require a password as an option. There are two ways for you to provide a password.

Typing a Password

The first way to provide a password is to type it on the same line as the command itself (remember, your password can be up to 14 characters long). For example, if Mary, whose password is *wanderer*, wants to use a shared resource *plotter* on a server *admin* that requires a password, she types:

```
net use lpt1: \\admin\plotter wanderer
```

Using the * Option

You can also ask MS-DOS LAN Manager to prompt you for your password, by replacing the password with an asterisk (*) when you type the command. For example, Mary could type the following command to connect to the shared resource *plotter*:

```
net use lpt1: \\admin\plotter *
```

MS-DOS LAN Manager displays the following prompt:

```
Type the password for \\ADMIN\PLOTTER:
```

When you type a password at this prompt, the password is not displayed as you type. This allows you to keep your password confidential. Although this option may prove a little less convenient than typing your command and password together, it provides added security.

You can use the asterisk option with the following commands to cause MS-DOS LAN Manager to prompt you for a password:

LOGON	NET LOGON
NET PASSWORD	NET USE

Depending on the command you type, MS-DOS LAN Manager may also prompt you for other pertinent information, such as your user name.

NOTE: MS-DOS LAN Manager will also prompt you for a password if you forget to type it with a command that requires one.

Using /yes and /no

Some commands cause MS-DOS LAN Manager to prompt you for a decision. For example, if you use the LOGOFF command to log off from the local area network, MS-DOS LAN Manager displays a prompt similar to the following:

```
You have the following remote connections:  
    LPT1  
Continuing will cancel the connections.  
Do you want to continue this operation? (Y/N) [N]:
```

You can use the /yes and /no options with any MS-DOS LAN Manager command to anticipate and respond to a prompt like the one shown. This expedites the function, because when MS-DOS LAN Manager reads one of these command options, it does not pause to display the corresponding prompt. Instead, the /yes or /no option is automatically accepted as your response.

For example, if you use the LOGOFF command and know that you want to respond to the prompt with a Y, you can type the following line:

```
logoff /yes
```

The /yes and /no options can also be added to commands in batch files to keep functions from being interrupted by MS-DOS LAN Manager prompts. Use this feature with caution—MS-DOS LAN Manager generally prompts you like this for safety, to give you a chance to verify that you want to take an action that has important consequences (like logging off).

Command Reference Pages

Each command reference page in this chapter includes the following information.

Command Name and Purpose

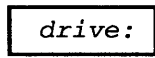
The top of each reference page shows the name of the MS-DOS LAN Manager command, followed by a brief description of what the command does. Generally, this description includes information displayed with the command, and the functions it performs.

Syntax

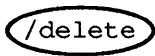
Bubble diagrams illustrate command syntax in this manual.



A bold, rounded-corner rectangle surrounds the command name. The command name is in all capital letters and bold type.



A rectangle surrounds variables. The variable is in lowercase italic letters. This shape says "substitute something here."



An oval surrounds arguments that you type exactly as they appear in this manual.



A circle surrounds punctuation.



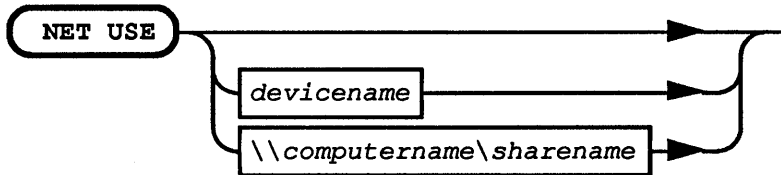
Arrows indicate direction.



A vertical line indicates a return.

Each element must be separated from the next by a space.

To read a bubble diagram, start at the command name, in the bold, rounded-corner rectangle. You may follow any line through the command, as long as you follow the direction of the arrows (imagine you are driving a car through a series of freeway interchanges). For example, when you come to the first decision point in the NET USE diagram shown next, you could choose to continue to the end without entering any further parameters. Or, you could take one of the branches that tell you to type either a device name, or the name of a computer and a sharename. After that, you must press [Return].



Following the bubble diagrams are explanations of all the options you can use with each command. Most option names can be abbreviated.

Comments

The comments section describes how to use the command, when to use it, and why. This section describes the command's options and explains which options can be used in combination. The comments section may also contain warnings or suggestions about using the command.

Example

Examples show how the command is used. In the *3+Open MS-DOS LAN Manager User Guide*, you were introduced to employees of a fictitious company, MacroCorp, Inc. The examples in this chapter also use the names of MacroCorp employees.

See Also

At the end of each command reference page is a list of titles of command and dialog box reference pages and other publications that you can read for more information related to the command.

Basic Commands

The following table lists the commands used with MS-DOS LAN Manager Basic. These commands are available to all users of MS-DOS LAN Manager, either Basic or Enhanced. Each command is discussed in detail on its own reference page.

In the next section of this chapter, Enhanced Commands, commands are listed that are available only to users with MS-DOS LAN Manager Enhanced, which includes the LAN Manager screen. If you are uncertain which version of MS-DOS LAN Manager you are using, check with your network administrator.

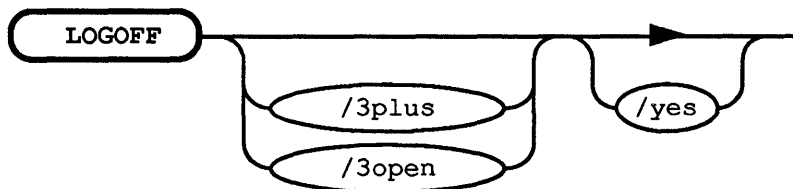
Table 2-1. MS-DOS LAN Manager Basic Commands

Command	Purpose
LOGOFF	Logs you off 3+Open or 3+ networks (or both).
LOGON	Logs your user name and password into 3+Open or 3+ networks (or both).
NET CONTINUE	Continues local area network functions suspended by the NET PAUSE command.
NET HELP	Displays information about the purpose and use of MS-DOS LAN Manager commands.
NET NAME	Displays the aliases currently defined in a netstation's list of aliases, and adds or deletes aliases from that list.
NET PAUSE	Suspends the specified MS-DOS LAN Manager functions.
NET PRINT	Displays and controls the contents of a shared printer's queue.
NET START WORKSTATION	Starts MS-DOS LAN Manager services.
NET USE	Connects users to resources shared by a server.

LOGOFF

This command ends a computer's connection with the local area network and logs a user name off from the local area network. LOGOFF can be used to log off from both 3+Open and 3+ networks. MS-DOS LAN Manager Enhanced has a similar command, NET LOGOFF, which is used to log off only the 3+Open network.

Syntax



Comments

The LOGOFF command is used to end a user's local area network session. Since only one user per netstation can be logged on to the local area network at a time, logging off one user name frees the netstation for use by someone else.

LOGOFF with no options logs you off both the 3+Open and 3+ networks. A message is displayed, confirming each network logged off:

```
username successfully logged off the 3+Open network  
username successfully logged off the 3+Name service
```

You can also specify a particular network with the /3open and /3plus options. Adding the /yes option at the end of the command means that MS-DOS LAN Manager will not prompt you for confirmation before cancelling any connections currently in effect.

If you are actively using any shared resources (for example, your current drive is a redirected drive), you must stop using those resources before you can log off. If you have any connections to a server's shared resources when you use the LOGOFF command, MS-DOS LAN Manager warns you that logging off deletes those connections. Messages similar to the following will be displayed:

```
NET2404: The device is being accessed by an active process
```

```
You have the following remote connections:
```

```
  H:
```

```
  I:
```

```
Continuing will cancel the connections.
```

```
Do you want to continue this operation? (Y/N) [N]:
```

If you respond with Y, your current connections will be broken, and you will see messages confirming that you have been logged off.

Once the LOGOFF command has been completed, you no longer have active user name, password, or local area network sessions, and you cannot receive messages sent to your user name.

Example

At the end of the day, to log off from the local area network, Jenny types:

```
logoff
```

See Also

For more information about this command, see:

- The LOGON command in this chapter, for information about logging on.
- The Log Into Network dialog box in Chapter 3: LAN Manager Screen Reference, for information about logging on to MS-DOS LAN Manager Enhanced.

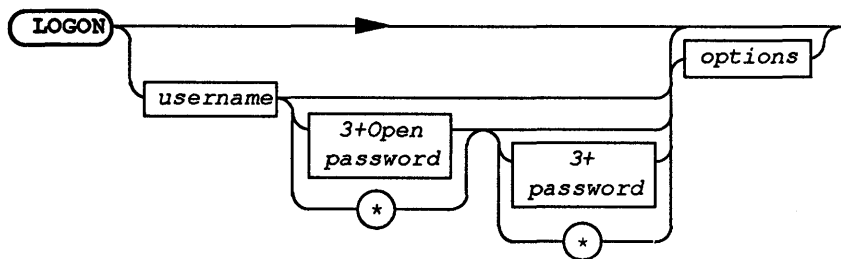
LOGON

This command sets the user name and password for your netstation. The LOGON command logs you on to either 3+Open or 3+ networks, or both. Do not confuse LOGON with NET LOGON (available in MS-DOS LAN Manager Enhanced), which logs you on to the 3+Open network only.

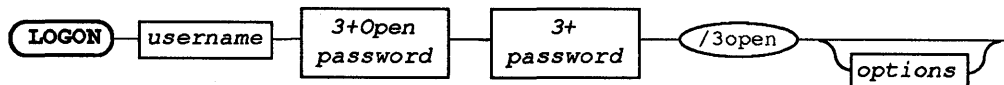
LOGON is quite versatile. The three syntax diagrams below show three different ways to use LOGON.

Syntax

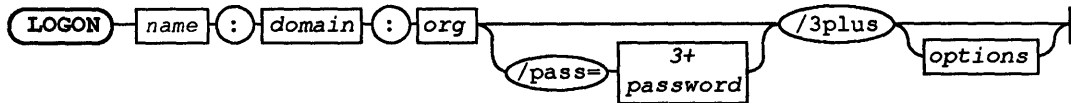
1. Log on to both networks.



2. Log on to 3+Open network only.



3. Log on to 3+ network with a three-part name.



Option	Abbreviation	Purpose
<i>username</i>		Specifies the default user name for the local netstation (up to 20 characters long).
*		You can type an asterisk instead of your password to cause MS-DOS LAN Manager Enhanced to prompt you for your password.
<i>3+Open password</i>		Password to be used on 3+Open network.
<i>3+ password</i>		Password to be used on 3+ network.
<i>name: domain:org</i>		The three-part name recognized by the 3+Name service.
/pass=		Required if you are specifying a three-part name for the 3+Name service (allows LOGON to distinguish the end of the three-part name).
/3open	/30	Forces LOGON to log on to 3+Open only.
/3plus	/3p, /3+	Forces LOGON to log on to 3+ only.

options may be any or all of the following:

Option	Abbreviation	Purpose
/no_pro	/np	Causes LOGON to not load profile files for either the 3+Open network (NETLOGON.PRO) or the 3+Name service (PROFILE.SYS).
/3open	/30	Forces LOGON to log on to 3+Open only.
/3plus	/3p, /3+	Forces LOGON to log on to 3+ only.
/yes	/y	Skips confirmation prompts as if you had answered yes.
/home_server= <i>computername</i>	/hs= <i>computername</i>	Sets environment variable used by redirector to <i>computername</i> , to specify the home server for Start volume users and netstation clock.
/no_time	/nt	Specifies that netstation clock will not be set from 3+Name server or home server.
/help	help, /?, ?	Displays a help screen for the LOGON command.
/security= user or share	/SE= user or share	Sets an environment variable used for establishing the initial Start volume connection.

Comments

The LOGON command is usually put into your netstation's AUTOEXEC.BAT file by the NETSETUP program. This way, logging on is handled each time you start your netstation. LOGON establishes your user name and password on the network. It works on networks that contain only 3+Open servers, as well as networks containing both 3+Open and 3+ servers.

General Usage

When you use the LOGON command with no options, you are prompted for a user name and password. Similarly, if you type the LOGON command with just a user name and no password, it is assumed that no password is required.

If you type an asterisk after the user name (in place of either the 3+Open or 3+ password, or both), then you are prompted to supply a password:

```
Enter your 3+Open password:  
Enter your 3+Name service password:
```

Characters you enter will not be displayed, thereby keeping your password secure.

When you enter just one user name and one password, they are used to attempt to log on to the 3+Open network and to the 3+Name service. If LOGON is successful in logging on to the 3+Open network, it displays the message:

```
username successfully logged on the 3+Open network
```

(*username* is your user name).

When logging on to the 3+Name service, the user name you supply LOGON is treated either as an alias or as a user name under the default Name service domain and organization. If 3+Name service logon is successful, you will see the message:

```
3+ User name:domain:org successfully logged on the 3+Name service
```

name:domain:org is a three-part name recognized by the 3+Name service. If you supply an alias with the command, the 3+Name service translates it into a three-part name. If you supply your user name, the three-part name consists of your user name and the default domain and organization associated with your name.

If your netstation is already logged on under a different user name and has remote connections, LOGON first displays a prompt similar to this:

```
You have the following remote connections:
```

```
  H:
```

```
  I:
```

```
Continuing will cancel the connections.
```

```
Do you want to continue this operation? (Y/N):
```

If you answer yes (by pressing Y), LOGON cancels these connections. In essence, your netstation will be logged off before it is logged on again. However, if any of your network connections are currently in use (for example, if your current drive, as shown by the MS-DOS prompt, is one of your redirected drives), LOGON displays the message:

```
NET2404: The device is being accessed by an active process
```

LOGON cannot continue in this case, and stops.

The LOGON command also tries to add the specified user name as an alias for the netstation. If the user name cannot be added as an alias, MS-DOS LAN Manager Enhanced logs you on to the local area network, but displays a warning message.

Logging On to Mixed Networks

A **mixed network** is one in which there are both 3+Open and 3+ servers, and which includes the 3+Name service. LOGON is designed to take care of logging in to both networks.

If your network does not provide the 3+Name service, LOGON will detect this automatically and log you on to the 3+Open network only.

It is simplest when your user name and password are both the same for both networks. For example, if your user name is *marys*, and your password is *wanderer*, for both networks, use the LOGON command like this:

```
logon marys wanderer
```

If you have the same user name but different passwords on both networks, you can put both passwords in the command. If your 3+ password is *traveler*, then the LOGON command would look like:

```
logon marys wanderer traveler
```

In this example, *marys* is your user name on both networks, *wanderer* is your 3+Open password, and *traveler* is your 3+Name service password.

LOGON can also take 3+Name service logon information from the name= and password= lines in your netstation's PROFILE.SYS file. PROFILE.SYS must be located in your current directory. This may be convenient if you use a three-part name for the 3+Name service, or if you use different user names and/or passwords on 3+Open and 3+Name service. This will happen automatically unless you append the option /no-pro to the command, like this:

```
logon marys wanderer /no-pro
```

You can also run LOGON twice: once for each network. This also allows you to use three-part names or different user names on both networks. The commands might look like this:

```
logon marys wanderer /3open  
logon msmith:finance:macrocorp /pass=traveler /3plus
```

The options /3open and /3plus determine which network LOGON will log you on to.

If your user name is registered with the 3+Name service, but your 3+Open password is not correct as a 3+ password, you will see the following message:

```
Enter 3+Name service password:
```

Enter the correct password at this prompt. LOGON then gives you the opportunity to change your 3+Name service password to match your 3+Open password:

```
Change the 3+Name service password to match the  
3+Open password? (Y/N):
```

If you press Y, you will be asked to type the 3+Open password again (this is done partly for security, and partly to ensure you correctly remember the 3+Open password):

Enter your 3+Open password:

If the two passwords match, LOGON will change your password in the 3+Name service and confirm with the following message:

Password successfully changed on the 3+Name service.

If your 3+Open and 3+ passwords are different, you should consider making them the same. This will simplify use of the network for both you and your network administrator.

Logging On to the 3+Open Network

The /3open (/3o) option directs LOGON to log on only to the 3+Open network. For example:

```
logon marys wanderer /3open
```

You might want to use this form of the LOGON command if you are currently logged on to both networks, and you wish to change only your 3+Open logon.

If your 3+Open network uses logon security (by keeping a distributed or centralized database of user names and passwords on one or more servers), then your user name and password are sent to the server for verification. If the logon server recognizes the user name/password combination you gave, you are allowed to log on to the local area network. If you have a logon script associated with your account, MS-DOS LAN Manager Enhanced runs the script on your netstation when you log on to the local area network. (This script is contained in a file on the logon server.)

Logging On to the 3+Name Service

The `/3plus` (`/3p`, `/3+`) option directs LOGON to log on only to the 3+Name service. For example:

```
logon msmith traveler /3plus
```

Like logging on to only the 3+Open network, this form of the LOGON command is useful to change your logon to 3+ while not changing your logon to 3+Open.

If you wish to use a three-part name for your 3+ logon you must use a specific form of the LOGON command:

```
logon name:domain:org /pass=password /3plus
```

Here *name:domain:org* is your three-part name. The option `/pass=` is required because three-part names can contain spaces; `/pass=` tells LOGON where the three-part name ends and the password begins. Note also that you cannot mix a three-part name and a 3+Open user name. You must either use LOGON twice, as described earlier, or put your 3+Name service logon information in the PROFILE.SYS file.

Changing Your Password

You can use LOGON to change the password currently in effect. You might want to do this if you have separate passwords for different resources on the network, or different privilege levels. Note that this is a temporary change; the next time you start your netstation, the LOGON command(s) in AUTOEXEC.BAT will use your original password. If you want to change your password permanently, edit the LOGON command in AUTOEXEC.BAT.

To change only your 3+Open password, type the LOGON command like this:

```
logon username password /3open
```

In this case, *username* is your *original* user name, and *password* is the *new* password. This form of the command won't cancel any current connections, and will register the new password with the 3+Open network.

Automatic Logon

Certain MS-DOS LAN Manager commands require you to be logged on to the network before they can be used, as described earlier in this chapter, in the section "Logging On Automatically." These commands automatically run the NET LOGON command before they proceed with their own functions. Remember that NET LOGON does not provide the full functionality of the LOGON command on mixed networks; if your network requires you to log on to both the 3+Open network and the 3+Name service, be sure you have used LOGON before you attempt any of the commands that require you to be logged on to the network.

Example

For Jenny to establish her user name, *jennyt*, and password, *babaloo*, as the defaults on a netstation, she types:

```
logon jennyt babaloo
```

If Jenny's network contains both 3+Open servers and the 3+Name service, she sees the following prompts as confirmation:

```
jennyt was successfully logged on to the 3+Open network  
jennyt:finance:macrocorp was successfully logged on to the 3+Name  
service.
```

The second line of the message shows that Jenny's user name, *jennyt*, was translated by the 3+Name service into a three-part name, containing her name, domain (*macrocorp*), and organization (*finance*).

See Also

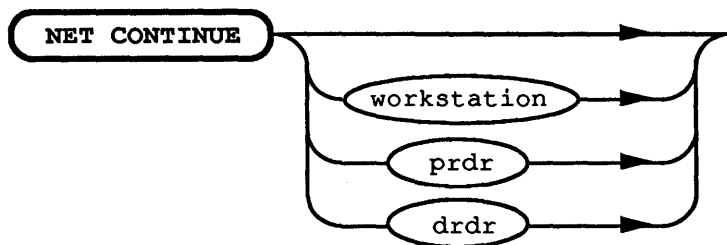
For more information about this command, see:

- The NET LOGON command, for information about MS-DOS LAN Manager Enhanced's 3+Open logon capabilities.
- The Config->Logon menu in Chapter 3: LAN Manager Screen Reference, for information about the Log Into Network dialog box.
- The LOGOFF command, for information about logging off the network.

NET CONTINUE

This command continues MS-DOS LAN Manager services suspended by the NET PAUSE command.

Syntax



Option	Purpose
workstation	Continues local area network connections to all parallel (LPT) ports and disk drives.
prdr	Continues local area network connections to printer ports only.
drdr	Continues local area network connections to disk drives only.

NET CONTINUE may be abbreviated NET CONT.

Comments

The NET CONTINUE command reinstates services or resources that were paused using the NET PAUSE command. Specifically, you can pause and continue the Workstation service, or pause and continue connections to parallel (LPT) ports or disk drives only.

When you continue local area network connections to network printers, any local connections to parallel (LPT) ports are ignored, and connections to local area network resources are restored.

For example, suppose you have a dot-matrix printer connected to LPT1 of your netstation. You may choose to redirect LPT1 to a laser printer on the local area network, then pause your local area network connections when you want to use the dot-matrix printer. When you are ready to use the laser printer again, the NET CONTINUE command causes your netstation to redirect LPT1 to the network laser printer and ignore the local dot-matrix printer connection.

Example

Mike Greenbaum paused the Workstation service on his computer earlier in the day. Now he wants to use local area network resources, so he continues the Netstation service by typing NET CONTINUE WORKSTATION.

See Also

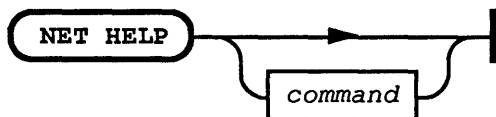
For more information about this command, see:

- The NET PAUSE command in this chapter, for information about pausing MS-DOS LAN Manager services.
- The Network Resources in Use at Your Workstation dialog box, in Chapter 3: LAN Manager Screen Reference, for information about pausing and continuing your local area network connections from the LAN Manager screen.

NET HELP

This command provides information at the MS-DOS prompt about how to use MS-DOS LAN Manager Basic commands.

Syntax



command may be one of the following MS-DOS LAN Manager Basic commands:

CONTINUE	NAME	PAUSE
PRINT	START	USE

Comments

When used without options, the NET HELP command displays a list of all MS-DOS LAN Manager commands. You can type NET HELP, followed only by the second word of the MS-DOS LAN Manager command. For example, if you want help in using the NET USE command, type:

```
net help use
```

In response, NET HELP displays information about the NET USE command:

The syntax of this command is:

```
NET USE [devicename | \\computername\sharename]  
NET USE [devicename] \\computername\sharename [password]  
NET USE {devicename | \\computername\sharename} /DELETE
```

The NET USE command connects a netstation's local devicename to a server's shared resource.

See the MS-DOS LAN Manager User Reference for more information about this command.

NOTE: You can also see help information for an MS-DOS LAN Manager command by typing the command in the following form:

```
command /help
```

For example, you could see information about the NET LOAD command by typing either of the following commands:

```
net help load  
net load /help
```

You can type a command in the following form to see information about syntax for that command only:

```
command /?
```

For example, if you were interested in seeing only what the proper syntax for the NET PRINT command is, you could type:

```
net print /?
```

Example

To get help with options and syntax associated with the NET PRINT command, Mike types:

```
net help print
```

See Also

For more information about the NET HELP command, see:

- The NET HELP command in the third section of this chapter, for the version of NET HELP that displays the commands for MS-DOS LAN Manager Enhanced.

NET NAME

Under MS-DOS LAN Manager Basic, NET NAME displays your netstation's user name.

Syntax

NET NAME |

Comments

NET NAME displays your netstation's user name when you are running MS-DOS LAN Manager Basic. When you are running MS-DOS LAN Manager Enhanced, this command displays more information about aliases at your netstation and allows you to change them.

Example

Jimmy Wilson has forgotten his user name. To find out, he types:

```
net name
```

NET NAME displays his user name:

```
Name
```

```
JIMMYW
```

```
The command completed successfully.
```

See Also

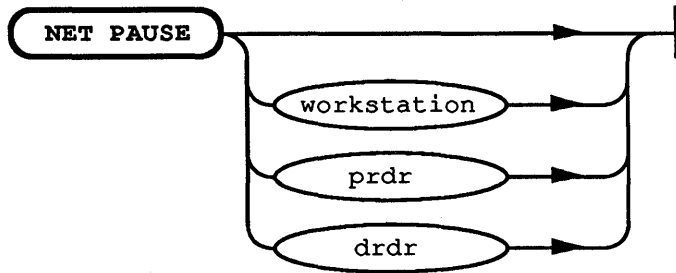
For more information about this command, see:

- The NET NAME command in the third section of this chapter, describing the use of NET NAME if you are using MS-DOS LAN Manager Enhanced.

NET PAUSE

This command suspends an MS-DOS LAN Manager service or connection to a shared resource, and frees up memory used by a service.

Syntax



Option	Purpose
workstation	Pauses local area network connections to all parallel (LPT) ports and disk drives.
prdr	Pauses local area network connections to printer ports only.
drdr	Pauses local area network connections to disk drives only.

Comments

When you pause the Workstation service, you temporarily suspend connections from your netstation to network printers and disk drives, and free memory on your computer for use by other programs you want to run. When you pause a connection to a shared resource, you temporarily suspend the connection between your netstation and the shared resource.

For example, you might want to pause the connection between a shared printer and your netstation's LPT1 port if you have connected a printer to that port temporarily.

To restore a paused resource or service, use the NET CONTINUE command.

Example

To pause the connection between a shared printer and his netstation, Ben types:

```
net pause workstation
```

When Ben is ready to resume this local area network connection, he types:

```
net continue workstation
```

See Also

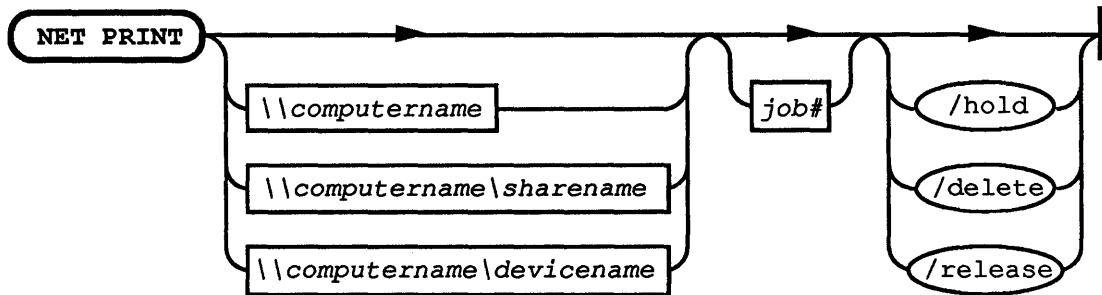
For more information about this command, see:

- The NET CONTINUE command in this chapter, for information about continuing paused services.

NET PRINT

This command displays and controls the contents of a shared printer queue.

Syntax



Option	Purpose
<i>\\computername</i>	Specifies the server sharing the printer queue.
<i>sharename</i>	Specifies the shared printer queue.
<i>devicename</i>	Specifies the local print device connected to the queue.
<i>job#</i>	Specifies the identification number assigned to a file in a queue.
<i>/hold</i>	Keeps a print job from printing. Print jobs held in the queue with the <i>/hold</i> option stay in the queue and are not printed until released with the <i>/release</i> option.
<i>/release</i>	Releases a held job from the queue.
<i>/delete</i>	Breaks the connection with the printer queue; removes all of your print requests in the printer queue. Or, if you specify a print job, removes the print job from the printer queue.

Comments

When used with the `\computername` option, the NET PRINT command displays information about a specific printer queue. For example, the contents of a printer queue in a MacroCorp server `\print1` might be displayed as follows:

Printer Queues at \\PRINT1

Name	Job#	Size	Status
FAST PRT Queue	3 jobs		*Queue Active*
JACKST	1	2509	Printing on LPT1
JENNYT	3	75	Waiting
JENNYT	4	75	Waiting PRT Queue

The command completed successfully.

This display lists:

Column	Contents
Name	Sharename of the printer queue and the user name of the owner for each job sent to the queue.
Job#	Identification number of each print job.
Size	Size in bytes of each print job.
Status	Status of each print job (Printing, Paused, Error, or Spooling), or the status of each queue and the number of jobs in it.

When used with the computer name and sharename of a queue, or with the redirected device name, the NET PRINT command displays only information about the specified queue. This display includes the status of the queue itself and a list of the jobs in the queue, including the size and status of each job. Print jobs for printers controlled by MS OS/2 LAN Manager servers are listed under a single heading, as if they consisted of one large printer queue.

The status of a printer queue can be OK, Held, Held until, Pending delete, or Error. The status of a print job can be Spooling, Held, Printing on (device), Held on (device), Out of paper on (device), Error on (device), Offline on (device), or Waiting.

Print jobs to be held or released (with the /hold and /release options) can be specified either by the device name, or by the computer name of the server plus the sharename of the queue. For example, if your netstation's LPT2 device name is redirected to a queue `\\mis\print`, any of the following commands will hold a job (identification number 24):

```
net print lpt2 24 /hold
net print \\mis\print 24 /hold
net print \\mis 24 /hold
```

Example

Realizing that he sent the wrong monthly budget to a shared printer queue *laser* on the *print1* server, Jack wants to delete his print request. First, he types the following command to see what identification number is assigned to his print request:

```
net print \\print1\laser
```

The following display appears:

```
Print Queues at \\PRINT1
```

Name	Job#	Size	Status
LASER Queue	2 jobs		*Queue Active*
BENS	6	2527	Printing on COM1
JACKST	7	3074	Waiting

He sees that his is request number 7. Next, Jack deletes his print request by typing:

```
net print \\print1\laser 7 /delete
```

See Also

For more information about this command, see:

- The Printer Queues for (Server) dialog box in Chapter 3: LAN Manager Screen Reference, for information about working with printer queues using the LAN Manager screen (if you have MS-DOS LAN Manager Enhanced).

NET START WORKSTATION

This command starts the MS-DOS LAN Manager Workstation service.

Syntax

NET START WORKSTATION |

Comments

The MS-DOS LAN Manager Basic version of the NET START COMMAND has no options on its command line, unlike the Enhanced version, described later in this chapter. NET START WORKSTATION is included in your netstation's AUTOEXEC.BAT file by the NETSETUP program to start the Workstation service automatically each time you start your netstation. If the command has been removed from your AUTOEXEC.BAT file, you can type it at the MS-DOS prompt.

Example

John has removed the NET START WORKSTATION command from his AUTOEXEC.BAT file. When he arrives at work in the morning, he turns on his computer and types the following command to start the Workstation service:

```
net start workstation
```

See Also

For more information about this command, see:

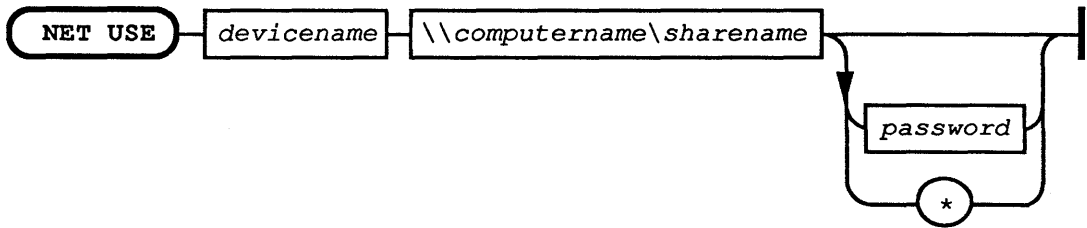
- The NET START WORKSTATION command for MS-DOS LAN Manager Enhanced, later in this chapter.

NET USE

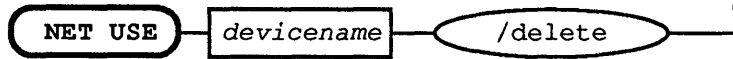
This command redirects a netstation's local device name to a server's shared resource.

Syntax

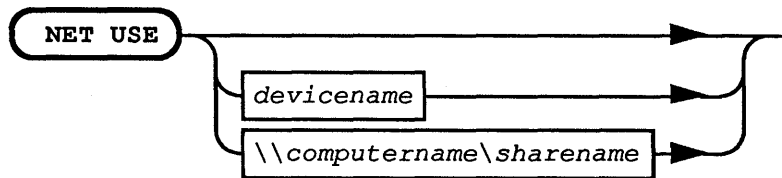
1. Making a connection



2. Deleting a connection



3. Getting information about connections



Option	Purpose
<i>devicename</i>	Specifies the name of the parallel port (for example, LPT1) or disk drive (for example, G:) you are using locally to identify a shared printer or directory.
<i>\\computername</i>	Specifies the server controlling the shared resource.
<i>\sharename</i>	Specifies the shared resource.
<i>password</i>	For servers with share-level security, this specifies the password assigned to the shared resource. For servers with user-level security, this specifies the user's password to the server controlling the requested resource, if it is different from the password set with the LOGON command. You can type an asterisk (*) instead of your password to cause MS-DOS LAN Manager Basic to prompt you for your password.
<i>/delete</i>	Disconnects a local area network connection.

Comments

When used without options, the NET USE command lists the netstation's connections. The display lists the status, associated device, and sharename of each connection. For example:

```

Status          Local name      Remote name
-----
DISCONNECTED   G:              \\GENERAL\C
OK              M:              \\MIS\SCRATCH
ERROR          LPT1            \\PRINT1\LASER
  
```

The command completed successfully.

When used with just the device name or just the server's computer name and sharename, the NET USE command displays information about a specific connection. For example:

```
net use \\admsvc\requests
Local name R:
Remote name \\ADMSVC\REQUESTS
Type          Disk
Status        OK
Open count    1
Use count     1
```

The command completed successfully.

This display shows:

Field	Contents
Local name	The device name of the device connected to the shared resource.
Remote name	The sharename of the shared resource.
Type	The type of shared resource being used: Disk or Printer.
Status	The status of the connection: OK, Error, or Disconnected.
Open count	The number of times a file was opened via this connection.
Use count	The number of connections you have to the shared resource.

If you type the NET USE command before you log on to the local area network, MS-DOS LAN Manager prompts you to log on. (This is because MS-DOS LAN Manager must validate your user name and password before allowing you access to shared resources.)

You cannot disconnect a local device name from a server if that is your current drive. You must first change to another drive. Also, if you try to disconnect from a shared-disk resource when files are still open on the server, MS-DOS LAN Manager displays a warning message and asks you to confirm your decision.

A connection listed as disconnected means that a server ended your session due to inactivity. In most cases, MS-DOS LAN Manager automatically reestablishes this connection the next time you try to use the resource. You do not have to retype the NET USE command to reestablish the connection.

Example

To connect her netstation's E: device name to a shared directory with the sharename *letters* controlled by the *general* server, Debbie types:

```
net use e: \\general\letters
```

Later, Debbie wishes to connect her netstation's D: device name to a shared directory with the sharename *drv_c*, which shares the entire contents of drive C on the *general* server. *drv_c* requires the password *goddess*. Debbie types:

```
net use d: \\general\drv_c goddess
```

To connect her netstation's print device LPT1 to the shared printer with the sharename *laser2* controlled by the *print2* server, Debbie types:

```
net use lpt1: \\print2\laser2
```

When Debbie is ready to disconnect from this resource, she types:

```
net use lpt1: /delete
```

See Also

For more information about this command, see:

- The LOGON command in this chapter, for information about logging on to the local area network.
- The NET SAVE command in this chapter (if you have MS-DOS LAN Manager Enhanced), for information about saving your netstation's current resource connections to a profile file.
- The NET LOAD command in this chapter (if you have MS-DOS LAN Manager Enhanced), for information about restoring saved resource connections from a profile file.
- The Use a Shared Resource dialog box in Chapter 3: LAN Manager Screen Reference (if you have MS-DOS LAN Manager Enhanced), for information about connecting a device to a shared resource using the LAN Manager screen.

Enhanced Commands

The following table lists the commands used with MS-DOS LAN Manager Enhanced. If you are using the Basic version of MS-DOS LAN Manager, only the commands listed in the previous section of this chapter are available to you. If you are uncertain which version you are using, check with your network administrator.

Table 2-2. MS-DOS LAN Manager Enhanced Commands

Command	Purpose
NET	Starts the user version of the LAN Manager screen.
NET ACCESS	Allows a network administrator to change permissions on a server from a netstation.
NET ADMIN /COMMAND	Allows a network administrator to run a command on a server while using a netstation.
NET COPY	Copies files both locally and remotely.
NET HELP	Displays information about the purpose and use of MS-DOS LAN Manager commands.
NET LOAD	Loads a saved configuration from a file.
NET LOGOFF	Disconnects all 3+Open network sessions and logs a user off from the 3+Open network.
NET LOGON	Logs a user on to the 3+Open network and sets the user name and password for the netstation.
NET MOVE	Moves files from one place to another on the local area network.
NET NAME	Sets aliases for the netstation.
NET PASSWORD	Changes the password for logging on to a server.

Table 2-2. MS-DOS LAN Manager Enhanced Commands (continued)

Command	Purpose
NET SAVE	Saves the current local area network configuration into a file for later use.
NET SEND	Sends messages and files to other users.
NET START MESSENGER	Starts the MS-DOS LAN Manager Enhanced Messenger service, allowing you to send and receive messages.
NET START NETPOPUP	Starts the MS-DOS LAN Manager Enhanced Netpopup service, displaying messages as they are received.
NET START WORKSTATION	Starts the Workstation service, registers the netstation's user name, and sets various options.
NET VIEW	Displays the computer names of servers and the resources being shared by any server.

NET

This command displays the LAN Manager screen.

Syntax



Comments

The LAN Manager screen lets you perform MS-DOS LAN Manager Enhanced operations using menus and dialog boxes. You must start the Workstation service before using this command.

If you have not logged on to the local area network, the Log Into Network dialog box appears with the LAN Manager screen. This dialog box can only log you on to the 3+Open network. You *must* use the LOGON command (described at the beginning of this chapter) if your network includes the 3+Name service.

Example

To run the LAN Manager screen, Mike types the following command at the MS-DOS prompt:

```
net
```

The LAN Manager screen appears.

See Also

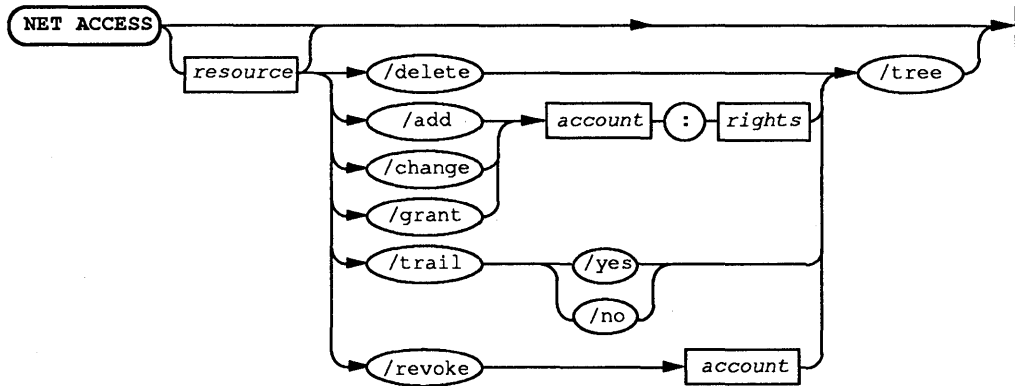
For more information about this command, see:

- Chapter 3: LAN Manager Screen Reference, for a description of each LAN Manager screen menu and dialog box.
- The *3+Open MS-DOS LAN Manager User Guide*, for information about using the LAN Manager screen.

NET ACCESS

This command allows a network administrator to list, create, change, and revoke permissions for resources at a server.

Syntax



Option	Purpose
<i>resource</i>	Names the resource to be assigned permissions. The resource can be a disk, directory, file, printer queue, or pipe.
<i>account</i>	Identifies the user name or group name of a specific account whose permissions are being modified.
<i>rights</i>	Specifies an account name and permissions to be set, in the form <i>account:permissions</i> . The name of a user or group account is followed by the permissions for the resource (R, W, C, X, D, A, P, Y, N; these are explained later in this section).
<i>/delete</i>	Removes permissions for a resource from the access-control database.
<i>/add</i>	Adds permissions for a resource to the access-control database.
<i>/change</i>	Changes a user's or group's permissions for a resource.
<i>/grant</i>	Adds a new user name and corresponding permissions to a preexisting resource record.
<i>/trail:[yesno]</i>	Turns audit trailing on or off for a particular resource. (The default is yes.)
<i>/revoke</i>	Revokes a user's or group's permissions to use the resource.
<i>/tree</i>	Reports permissions for the resource specified and all of its descendants (for example, subdirectories of a specified directory).

When used without options, the NET ACCESS command displays a list of the server's shared resources plus their assigned permissions. For example:

Resource	Permissions	Permissions
\PRINT	BENP:W JACKST:W MIKEG:WC	GUEST:WC MARYS:WC *USERS:WC
C:\	GUEST:R	*USERS:R
C:\LANMAN\SPOOL	GUEST:R	*USERS:R

The command completed successfully.

This display shows the pathname of every resource and the permissions assigned for that resource. (Group names are preceded by *.)

NOTE: If you type the NET ACCESS command for a network resource, the path in the Resource column is relative to the network server, not to your local computer.

Comments

Before you can use the NET ACCESS command, you must:

- Be sure that the server is started with user-level security (3+Open servers only).
- Make sure the resource exists.
- Have existing accounts for the users or groups for which you are assigning permissions.

The NET ACCESS command works only with 3+Open servers; it will not work with 3+ servers.

When you use the NET ACCESS command to display access permissions, a comment next to each resource's name shows whether access of that resource is being audited. Under each resource name are the names of users and groups permitted to use the resource, and the specific permissions. Three types of resources can appear in the list:

- Pathnames of drives, directories, or files
- Sharenames of printer queues
- Pathnames of named pipes

The NET ACCESS command can assign up to nine permissions. These permissions apply only when the server is running with user-level security. Some permissions work only with specific types of resources:

Letter	Permission
R	Read lets users read and copy files in that directory, but not change them. This also lets users view the names of files in a shared directory. Use this permission by itself if you want users to be able to look at or execute programs only.
W	Write lets users make changes to the files in that directory. In most cases, it should be used in combination with read permission.
C	Create lets users create files and subdirectories in the shared directory. When used by itself, this permission lets users create new files in the directory and change them while they are creating them; once the file is closed, they cannot modify it.
X	Execute lets users run a command or program.
D	Delete allows users to delete files and subdirectories.
A	Change attributes lets users change file attributes. For more information about file attributes, see the MS OS/2 User Reference.
P	Change permissions lets users change resource permissions. (This is the same as giving a user administrative privilege for a resource.)
Y	Yes allows users to submit files or requests to a printer queue.
N	No denies users access to a resource, and is useful if you need to exclude a specific person or persons from using a printer queue, directory, or file.

Only users who are assigned the permission P can change the permissions on a shared resource using the NET ACCESS command. Otherwise, administrative privilege on your server account must be obtained before permissions for resources shared from that server can be changed.

For a resource to be audited, the NET ACCESS command must be used with the name of the resource, and the /trail: option must be set to yes. Since yes is the default for this option, if you type the trail option with no value, auditing is turned on.

Example

To add permissions on the files in the *bin* directory for the user *mikeg* and the groups *pubrel* and *users*, Mary types:

```
net access c:\bin /add mikeg:rwxc pubrel:rw users:r
```

Later, to give Jenny Tibbett read and write permission for the same directory, Mary types:

```
net access c:\bin /grant jennyt:rw
```

See Also

For more information about this command, see:

- The *3+Open OS/2 LAN Manager Administrator Guide*, for an explanation of how a network administrator can start a server with user-level security or assign access permissions.

NET ADMIN /COMMAND

This command allows a network administrator to run a command remotely on a 3+Open server.

Syntax



Option	Purpose
<i>computername</i>	Specifies the computer name of the server the network administrator is accessing.
<i>password</i>	Specifies the network administrator password on the computer name.
<i>/command</i>	Starts a secondary command processor or runs command at computer name.
<i>command</i>	A command that will be run on the accessed server.

Comments

When you use the */command* option without a following command, a command processor similar to the MS-DOS COMMAND.COM command processor is started and runs at the designated 3+Open server. This command processor prompts for commands, runs them, and returns the resulting output to your screen.

While using this command processor, you must type the full pathname of each command. For example, if you start a command processor at a network server, then want to see a directory listing for a directory called *macrocorp* on that server, type the DIR command, followed by the drive letter and path of the directory:

```
dir f:\macrocorp
```

If you do not specify a full pathname when you type commands for a network server, MS-DOS LAN Manager Enhanced assumes a path of *lanman\netprog* on that server.

To exit from this command processor, type *exit*, or press [Ctrl]+Z.

You can also type the NET ADMIN command in the following form to run a single, noninteractive command (*command*) at the 3+Open server:

```
net admin \\computername [password] /command command
```

Three rules apply to the *command* option:

You must type the text of *command* within quotation marks. For example:

```
net admin \\server /command "net stop server /yes"
```

If *command* ends with a backslash character (\), be careful to add either an extra space or another backslash character before the ending quotation mark. For example, the following command would not work properly:

```
net admin \\server /command "net share c=c:\"
```

Instead, you could use any one of these commands:

```
net admin \\server /command "net share c=c:\\"
```

```
net admin \\server /command "net share c=c:\ "
```

```
net admin \\server /command net share c=c:\
```

If *command* includes a multiple-word argument, *command* must be surrounded by one set of quotation marks, and the argument must be surrounded by another set. For example:

```
net admin \\server /command "net config server  
/srvcomment:"Remote server 1""
```

Example

To start a network administration session for the server *print2*, where the administrative password is *admiral*, Mike types:

```
net admin \\print2 admiral /command
```

The following message appears:

```
Type Exit or ^Z to exit.
```

The prompt at Mike's netstation changes to include the computer name *print2*.

Now all of the commands Mike types at his netstation run on the server *print2*. When he is done working with the network server, Mike types exit and his prompt reverts to the normal prompt for his netstation.

See Also

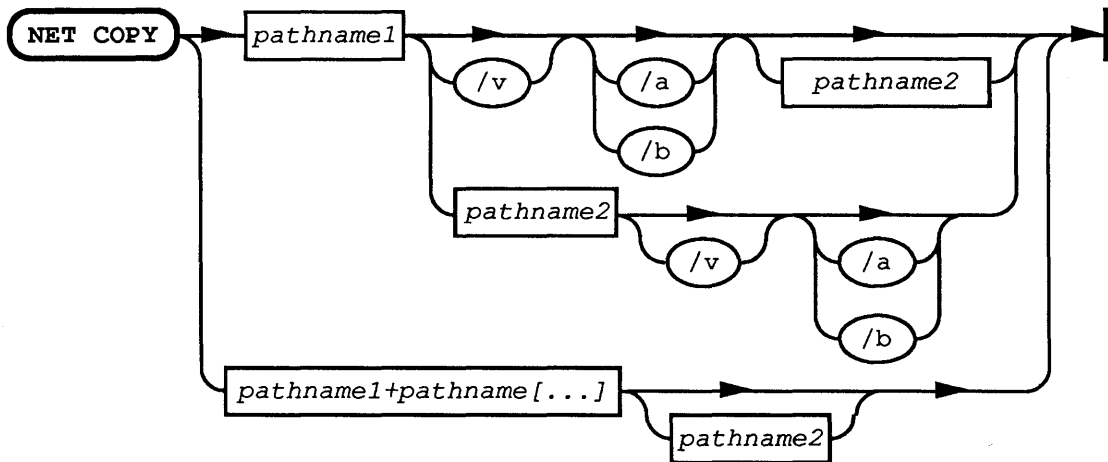
For more information about this command, see:

- The *3+Open OS/2 LAN Manager Administrator Guide*, for information about administering a network server.

NET COPY

This command copies files, both locally and remotely.

Syntax



Option	Purpose
<i>pathname1</i>	Names the file being copied.
<i>pathname2</i>	Specifies the pathname the file is copied to. If <i>pathname2</i> is omitted, NET COPY copies the file into the current directory.
+ <i>pathname[...]</i>	Appends one or more files to <i>pathname1</i> and places the result in <i>pathname2</i> .
/v	Causes MS-DOS LAN Manager Enhanced to verify that information was properly recorded on the destination drive.
/a	Copies files in ASCII (text) format.
/b	Copies files in binary format.

Comments

The NET COPY command is similar to the MS-DOS copy command, allowing you to copy files over the local area network. You can copy files:

- From one location to another on your netstation.
- Between a network server and your netstation.
- From one location to another on a network server.
- From one network server to another network server.

If you do not specify the *pathname2* option, the copy is created in the working directory on the disk in the default drive of your local computer. This copy has the same name, creation date, and creation time as the original file (*pathname1*). If the original file is on the default drive and you do not specify *pathname2*, the NET COPY command quits (you are not allowed to copy a file to itself), and MS-DOS LAN Manager displays the following error message:

```
File cannot be copied onto itself  
0 File(s) copied
```

The /v option lets you verify that critical data has been correctly recorded; it also causes the NET COPY command to run more slowly, because MS-DOS LAN Manager Enhanced must check each entry recorded on the disk. If MS-DOS LAN Manager cannot verify that the file was copied successfully, it displays an error message.

Options /a and /b perform differently, depending on whether they are placed following the source filename or the target filename.

When placed after the source filename (*pathname1*):

- The /a option causes the file to be treated as an ASCII (text) file. Data in the file is copied up to but not including the first end-of-file mark. The remainder of the file is not copied.
- The /b option causes the entire file to be copied, including any end-of-file marks.

When placed after a target filename (*pathname2*):

- The /a option causes an end-of-file character to be added as the last character of the file.
- The /b option does not add an end-of-file character.

If you use the NET COPY command to copy files from one place to another on your netstation, or from one computer to another on the local area network, the names of the files are listed as they are copied. When you copy files from one place to another on a single network server, only the number of files copied is displayed; the names of the files are not displayed.

You can use full network pathnames, including computer names, with the NET COPY command. You do not need to connect to a network file or directory to copy it with the NET COPY command; connections are made automatically. However, you must have the necessary permissions (that is, read permission) for making connections.

Using NET COPY to copy a file from one place to another on a network server is quicker than connecting to that network server and then copying files with the MS-DOS COPY command.

Example

To copy a mailing list from the *lists* directory on the *\sales* server to the *address* directory on the same server, Olga types:

```
net copy \\sales\lists\mail.txt \\sales\address\mail.txt
```

To copy an interoffice memo from one server (*\humanr*) to another (*\print1*), Olga types:

```
net copy \\humanr\olgar\memo0513.doc \\print1\public  
\annual.mtg
```

This command copies the file MEMO0513.DOC from the *olgar* directory on the *humanr* server, creating a file called ANNUAL.MTG in the public directory on the *print1* server.

See Also

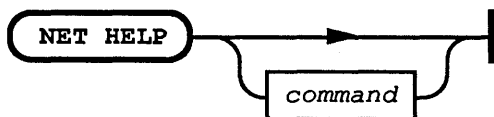
For more information about this command, see:

- The NET MOVE command in this chapter, to learn how to move—rather than copy—files.
- The *MS-DOS User Reference*, for information about the MS-DOS COPY command.

NET HELP

This command provides information at the MS-DOS prompt about how to use MS-DOS LAN Manager Enhanced commands. This information includes the Basic commands, since these are also a part of MS-DOS LAN Manager Enhanced.

Syntax



command may be any of the following MS-DOS LAN Manager Basic or Enhanced commands:

ACCESS	ADMIN	CONTINUE
COPY	LOAD	LOGOFF
LOGON	MOVE	NAME
PASSWORD	PAUSE	PRINT
SAVE	SEND	START
USE	VIEW	

Do not type the word NET as part of *command*; it is assumed. NET HELP provides help on the NET LOGOFF and NET LOGON commands; it does not provide help on LOGON or LOGOFF.

Comments

When used without options, the NET HELP command displays a list of all MS-DOS LAN Manager commands. You can type NET HELP, followed by only the second word of the MS-DOS LAN Manager command. For example, if you want help in using the NET USE command, type:

```
net help use
```

In response, NET HELP displays information about the NET USE command:

The syntax of this command is:

```
NET USE [devicename | \\computername\sharename]  
NET USE [devicename] \\computername\sharename [password]  
NET USE {devicename | \\computername\sharename} /DELETE
```

The NET USE command connects a netstation's local devicename to a server's shared resource.

See the MS-DOS LAN Manager User Reference for more information about this command.

NOTE: You can also see help information for an MS-DOS LAN Manager command by typing the command in the following form:

```
command /help
```

For example, you could see information about the NET LOAD command by typing either of the following commands:

```
net help load  
net load /help
```

You can type a command in the following form to see only information about syntax for that command:

```
command /?
```

For example, if you were interested in seeing only what the proper syntax for the NET SEND command is, you could type:

```
net send /?
```

Example

To get help with options and syntax associated with the NET ADMIN command, Mike types:

```
net help admin
```

See Also

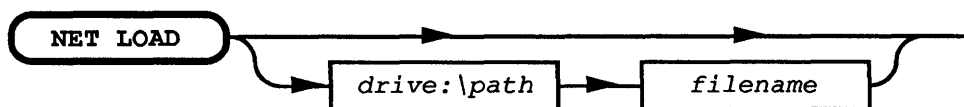
For more information about this command, see:

- The NET HELP reference section earlier in this chapter, for the version of NET HELP that displays the commands for MS-DOS LAN Manager Basic.

NET LOAD

This command loads a specified profile file that contains MS-DOS LAN Manager commands to configure the netstation's local area network connections.

Syntax



Option	Purpose
<i>drive:\path</i>	Specifies the location of the profile file. If no drive letter and path are specified, MS-DOS LAN Manager Enhanced assumes the profile file is located in the default directory <code>\3open\doswksta\lanman\profiles</code> .
<i>filename</i>	Specifies the name of the profile file.

When used without options, the NET LOAD command loads the default profile file `\3OPENDOSWKSTA\LANMANPROFILES\NETLOGON.PRO`.

Comments

The NET LOAD command loads a profile file for your netstation. A profile file is like a batch file, containing NET USE commands that configure your netstation's local area network connections.

The NET LOAD command cannot run if the Workstation service is not started. But if you type the NET LOAD command before logging on to the Workstation service, MS-DOS LAN Manager Enhanced offers to log you on to the netstation automatically:

```
Workstation not started.  
OK to start it? (Y/[N])
```

Type Y to log on to the Workstation service and load your profile file.

If any connections to shared resources exist when NET LOAD is used, MS-DOS LAN Manager Enhanced prompts for confirmation before canceling the existing connections and establishing the ones specified in the profile file. If any connections are actually in use when you type the NET LOAD command, MS-DOS LAN Manager Enhanced displays an error message and asks if you want to continue. If you do, any existing connections are discontinued.

About Profile Files

By default, MS-DOS LAN Manager Enhanced assumes profile files are stored in the directory `\3open\doswksta\lanman\profiles`. Storing all profile files in one directory makes it easy for users to create, find, and use profile files. MS-DOS LAN Manager Enhanced also assumes a filename extension of .PRO, unless you specify otherwise. From the MS-DOS prompt, you can use the NET SAVE command to create a profile file. Typically, your network administrator will create a default NETLOGON.PRO file on your netstation when the netstation is first connected to the local area network. If you wish, you can later modify the default profile to fit your specific needs.

Example

Jenny is working on a new project this week and needs to use the printer in the computer room. She uses the NET SAVE command to create a new profile file, called NETPRINT.PRO, that connects her netstation to the line printer in the computer room:

```
net save netprint.pro
```

Normally, Jenny has no need to use this printer, so she did not want to alter her default NETLOGON.PRO file. When Jenny wants to print with the line printer, she types:

```
net load netprint.pro
```

See Also

For more information about this command, see:

- The NET SAVE command in this chapter, for information about creating profile files.
- The NET START command in this chapter, for information about how profile files are loaded when the netstation is started.
- The Load Configuration dialog box in Chapter 3: LAN Manager Screen Reference, for information about loading profile files using the LAN Manager screen.

NET LOGOFF

This command ends a computer's connection with the 3+Open network and logs a user name off from the 3+Open network.

Syntax



```
NET LOGOFF
```

Comments

The NET LOGOFF command is used to end a user's 3+Open network session. Since only one user at a time can be logged on to the local area network from a netstation, logging off one user name frees the netstation for use by someone else.

NET LOGOFF only logs you off the 3+Open network; you *must* use the LOGOFF command, described at the beginning of this chapter, to log off the network if your network includes the 3+Name service.

If you are actively using any shared resources (for example, your current drive is a redirected drive), you must stop using the resources before you can log off. If you have any connections to a server's shared resources when you use the NET LOGOFF command, MS-DOS LAN Manager Enhanced warns you that logging off deletes those connections. You are then asked to confirm your request to log off. If you confirm your request, you will see the following message on your screen:

```
username  
successfully logged off
```

Once the NET LOGOFF command has been completed, you no longer have an active user name, password, or local area network session, and you cannot receive messages sent to your user name.

Example

At the end of the day, to log off from the local area network, Jenny types:

```
net logoff
```

See Also

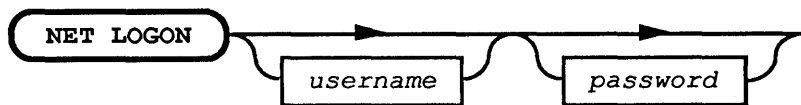
For more information about this command, see:

- The LOGOFF command earlier in this chapter, for information about logging from off mixed networks (networks that include the 3+Name service).
- The NET LOGON command in this chapter, for information about logging on to the 3+Open network.
- The Log Into Network dialog box in Chapter 3: LAN Manager Screen Reference, for information about logging on to MS-DOS LAN Manager Enhanced using the LAN Manager screen.

NET LOGON

This command logs a user name on to MS-DOS LAN Manager Enhanced and sets the user name and password for the user's netstation.

Syntax



Option	Abbreviation	Purpose
<i>username</i>		Specifies the default user name for the local netstation (up to 20 characters long).
<i>password</i>		Specifies the password for the netstation (up to 14 characters long).

When used without options, NET LOGON prompts for both the user name and the password.

Comments

The NET LOGON command establishes the user name and password that are used by 3+Open servers to validate requests to use shared resources. This command logs you on to the 3+Open network; it does not log you on to any particular 3+Open server.

NET LOGON works only with 3+Open servers; you *must* use the LOGON command, described earlier in this chapter, if your network includes the 3+Name service.

If your 3+Open network uses logon security (by keeping a distributed or centralized database of user names and passwords on one or more servers), then your user name and password are sent to the server for verification. If the logon server recognizes the user name/password combination you gave, you are allowed to log on to the 3+Open network. If you have a logon script associated with your account, MS-DOS LAN Manager Enhanced runs the script on your netstation when you log on to the 3+Open network. (This script is contained in a file on the logon server.)

When prompting for a user name, the NET LOGON command displays a default user name. This name is taken from the username= entry of the LANMAN.INI file. If this entry has no value, NET LOGON uses the computer name of the netstation (from the computername= entry in the LANMAN.INI file) as the default user name.

Instead of typing your password, you can type an asterisk (*). This causes MS-DOS LAN Manager Enhanced to prompt you for your password. When you type your password at the prompt, it is not displayed on the screen. This helps you to keep your password confidential.

You can use the NET LOGON command at any time to change a netstation's user name and password. To do this, simply type the NET LOGON command, along with the new user name and password.

If someone is already logged on to the 3+Open network from your netstation, the NET LOGON command displays a prompt saying that that user name must be logged off before another can be logged on.

The NET LOGON command also tries to add the specified user name as an alias for the netstation. If the user name cannot be added as an alias, MS-DOS LAN Manager Enhanced logs you on to the 3+Open network, but displays a warning message.

Example

For Jenny to establish her user name, *jennyt*, and password, *babaloo*, as the default on a netstation, she types:

```
net logon jennyt babaloo
```

If the netstation already had a default user name and password, Jenny would see the following prompt:

```
You are currently logged on as USER1
You must logoff before logging on.
Proceed with logoff? (Y/[N]): Y
USER1 logged off successfully
JENNYT logged on successfully.
```

She types Y for yes, and her user name and password become the default for the netstation.

See Also

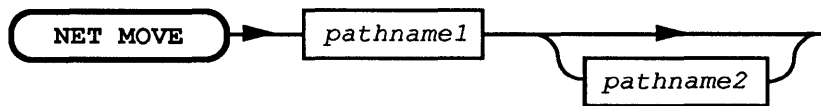
For more information about this command, see:

- The LOGON command at the beginning of this chapter, for information about logging on to mixed networks (networks containing the 3+Name service).
- The NET LOGOFF command in this section of this chapter, for information about logging off from the 3+Open network.
- The NET START WORKSTATION command in this chapter, for information about specifying a user name and password when starting the netstation under MS-DOS LAN Manager Enhanced.
- The Log Into Network dialog box in Chapter 3: LAN Manager Screen Reference, for information about logging on to the 3+Open network using LAN Manager Screen.

NET MOVE

This command moves files, both locally and remotely.

Syntax



Option	Purpose
<i>pathname1</i>	Names the file(s) to be moved. This pathname can include wildcard characters (* or ?).
<i>pathname2</i>	Identifies the directory or filename of the file(s) to which <i>pathname1</i> will be moved. If <i>pathname2</i> is not specified, the files are moved to the current directory. If wildcard characters are used in <i>pathname1</i> , then <i>pathname2</i> must be a directory.

Comments

The NET MOVE command moves files between any two directories you have permission to use. You can move files between two network computers. You do not have to make connections to servers to move network files; the NET MOVE command makes the connections for you.

Moving a file is not the same as copying a file. Copying makes a duplicate of the specified file and leaves the original in place; moving relocates a file from one place to another.

To move files, you must have create and delete permission for both the source files and the destination directory.

Example

To move all of the document files from the text directory on drive C of her netstation to the `\reports\budget` directory on the *general* server, Olga types:

```
net move c:\text\*.doc \\general\reports\budget
```

All of Olga's files that match the `c:\text*.doc` pathname are now on the `\\general` server and have been deleted from Olga's `c:\text` directory.

See Also

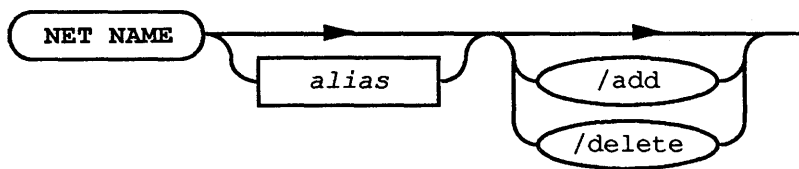
For more information about this command, see:

- The NET COPY command in this chapter, for information about copying files.
- The *MS-DOS User Guide*, for information about wildcard characters.

NET NAME

This command displays, adds, or deletes the message aliases defined in a netstation's list of aliases.

Syntax



Option	Purpose
<i>alias</i>	Specifies an alias you want to add or delete.
<i>/add</i>	Adds an alias to the netstation.
<i>/delete</i>	Removes an alias previously added to the netstation.

When used without options, the NET NAME command lists all of the aliases currently active on the local netstation. For example:

Name

JIMMYW
WALTERK
GUEST

The command completed successfully.

Comments

The NET NAME command is also available under MS-DOS LAN Manager Basic, but under Basic it only lists the user name established at your netstation. Under MS-DOS LAN Manager Enhanced, it provides many more options. These options deal with aliases used for messaging. Therefore, the MS-DOS LAN Manager Messenger service must be started before you use NET NAME to work with aliases.

A netstation can have three types of names:

- One computer name
- One user name
- One or more aliases

Your netstation can receive messages sent to all three types of names.

The /add switch is optional (that is, /add is assumed with no other options); you can add a new alias by typing NET NAME, along with the alias without the /add option. Thus, the following two commands do the same thing, assuming *jackst* is a new alias:

```
net name jackst
net name jackst /add
```

Example

Jimmy Wilson just started working in the mailroom. He wants Leslie to receive messages for him, until he gets a netstation of his own. Leslie types the following command at her netstation:

```
net name jimmyw
```

Now Leslie's netstation is ready to receive all messages sent to *jimmyw*. When Jimmy gets his own netstation, Leslie can stop receiving messages for him by typing:

```
net name jimmyw /delete
```

See Also

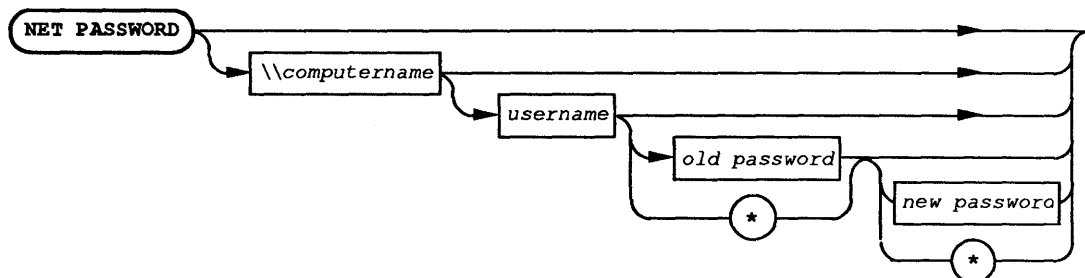
For more information about this command, see:

- The NET SEND command in this chapter (if you have MS-DOS LAN Manager Enhanced), for information about sending messages to other users.
- The Aliases for Messaging dialog box in Chapter 3: LAN Manager Screen Reference, for information about adding and deleting aliases using the LAN Manager screen.

NET PASSWORD

This command changes the password for accessing a 3+Open server.

Syntax



Option	Purpose
<i>computername</i>	Names the server on which the password will be used.
<i>username</i>	Names the user who has the password on the server.
<i>old password</i>	Specifies the user's current password. (Your password can be up to 14 characters long.) You can type an asterisk (*) instead of your password to cause MS-DOS LAN Manager Enhanced to prompt you for your password.
<i>new password</i>	Specifies the user's new password. (Your password can be up to 14 characters long.) You can type an asterisk (*) instead of your password to cause MS-DOS LAN Manager Enhanced to prompt you for your password.

When used without options, the NET PASSWORD command prompts you for all the information it needs. The following prompts are displayed:

```
net password
```

```
Type the computername where you want to change a password,  
or press ENTER if it is the local server
```

```
Type your user name:
```

```
Type the user's old password:
```

```
Type the user's new password:
```

```
Retype your password to confirm:
```

```
The command completed successfully.
```

Comments

The NET PASSWORD command changes the password for a user's account on a particular server running with user-level security. This command cannot be used for 3+Open LAN Manager servers running with share-level security, or 3+ servers.

The NET PASSWORD command prompts for any option not typed on the command line. If you type an asterisk instead of a password, MS-DOS LAN Manager Enhanced prompts you for the password. When you type your password at the prompt, it is not displayed on the screen. This helps you to keep your password confidential.

Example

When Jenny wants to change her password on the `\mis` server from *babaloo* to *duwamps*, she types:

```
net password \\mis jennyt babaloo duwamps
```

If there is another person in her office when Jenny changes her password, she types the NET PASSWORD command without options. This way, when she types in her old and new passwords, they are not displayed on her screen.

See Also

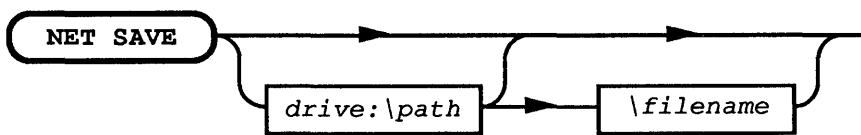
For more information about this command, see:

- The Change Logon Password at a Server dialog box in Chapter 3: LAN Manager Screen Reference, for information about changing passwords using the LAN Manager screen.

NET SAVE

This command creates a profile file that defines the netstation's current local area network connections for later use.

Syntax



Option	Purpose
<i>drive:\path</i>	Specifies the location of the profile file. If the drive letter and path are not specified, MS-DOS LAN Manager Enhanced assumes that the file is to be created in the default <i>\3open\doswksta\profiles</i> directory.
<i>filename</i>	Specifies the name of the profile file to contain the saved information.

When used without options, NET SAVE stores the current local area network configuration in the *\3OPEN\DOSWKSTA\PROFILES\NETLOGON.PRO* file. If the NETLOGON.PRO file already exists, MS-DOS LAN Manager Enhanced displays this warning message:

```

The file you have chosen already exists.
Overwrite? (Y/N) [N]:
  
```

Comments

The NET SAVE command saves a profile of your netstation's current connections to a profile file. A profile file is like a batch file that contains NET USE commands that define your netstation's local area network connections. You can use the NET LOAD command to load a profile file you save with the NET SAVE command. When you do this, you reestablish the local area network connections defined by the profile file.

About Profile Files

By default, MS-DOS LAN Manager Enhanced assumes profile files are stored in the *\3open\doswksta\profiles* directory. Storing all profile files in one directory makes it easy for you to create, find, and use profile files. MS-DOS LAN Manager Enhanced also assumes a filename extension of .PRO, unless you specify otherwise.

Typically, your network administrator will create a default NETLOGON.PRO file on your netstation when the netstation is first connected to the local area network. If you wish, you can later modify the default profile file to fit your specific needs.

Note that profile files have a different format than batch files. Using a word processing program, you can convert a profile file into a batch file. If you do so, you should give the converted file the .BAT extension and use it as a batch file rather than a profile file.

Example

John O'Clare most often uses two shared directories: the shipping directory on the `\\print1` server and the accounts directory on the `\\billing3` server. He connects these to his netstation's D: and E: device names, respectively. He also likes to use the `\\print1\draft` printer, which he links to his netstation's LPT1 port. Once he has connected to these shared resources, he saves the connections in the file `\BESTUSES.PRO` by typing:

```
net save \bestuses.pro
```

The `BESTUSES.PRO` file contains the following commands:

```
net use d: \\print1\shipping  
net use e: \\billing3\accounts  
net use lpt1: \\print1\draft
```

When John wants to establish the connections defined in `BESTUSES.PRO`, he uses the `NET LOAD` command to load this profile file.

See Also

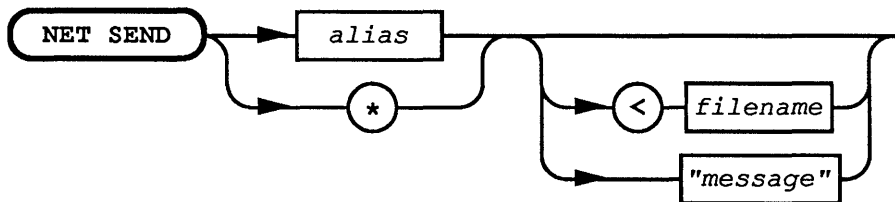
For more information about this command, see:

- The `NET LOAD` command in this chapter, for information about loading a profile.
- The Save Configuration dialog box in Chapter 3: LAN Manager Screen Reference, for information about saving a profile using the LAN Manager screen.

NET SEND

This command sends messages and files to other users.

Syntax



Option	Purpose
<i>alias</i>	Specifies the user name, group name, or computer name to which the message is to be sent.
< <i>filename</i>	Names the file to send as a message.
" <i>message</i> "	Specifies text to be sent as a message. Text must be contained within quotation marks. This option and the < <i>filename</i> option are mutually exclusive.
*	Indicates that all computers on the local area network are to receive the message (a broadcast message).

Comments

To send a short message to someone else on the local area network, type the NET SEND command using the following form:

```
net send alias "text"
```

The text of your message must be contained within quotation marks.

If the message you want to send is longer than one line, type the NET SEND command and press [Return]. MS-DOS LAN Manager Enhanced will allow you to type a message of any length; you may include several lines, including carriage returns. When you have typed your message, press [Ctrl]+Z to add an end-of-file character to your message. Then press [Return] again to send your message.

If you use the asterisk option to send a broadcast message (that is, a message sent to all computers on the local area network), that message is limited to 128 characters. If you try to send a longer broadcast message, excess characters are lost, and the receiver is not notified that the message is incomplete.

Files of up to 64 kilobytes can be sent as messages. However, most netstations have only enough memory to receive files smaller than 2 kilobytes. (The size of a netstation's message buffer is set by the `sizmessbuf=` entry in the LANMAN.INI file or with the NET START MESSENGER /SIZMESSBUF:*n* command.) If you send a message longer than the recipient can receive, the following error message appears:

```
Message sent but not received
```

If you need to send a very long message file, a better alternative might be to store the message file in a common area on a server, and then send a short message to the recipient telling where to find the file.

For you to successfully send a message to another person on the local area network, the Messenger service must be running on both netstations. When your message is successfully received, MS-DOS LAN Manager Enhanced displays the following message:

```
Message successfully sent to username.
```

If you use an alias that MS-DOS LAN Manager Enhanced does not recognize, or if the Messenger service is not running on the recipient's netstation, an error message appears.

Example

To send a message to the group name *pubrel*, Debbie types:

```
net send pubrel "Meeting changed to 3 p.m. Same place."
```

After the meeting, Debbie uses a word processor to type the meeting minutes. She then sends the file as a broadcast message to all computers connected to the local area network:

```
net send * < notes.mtg
```

See Also

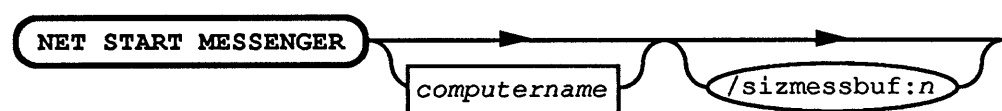
For more information about this command, see:

- The NET NAME command in this chapter, for information about adding extra aliases to your netstation.
- The NET START MESSENGER command in this chapter, for information about starting the Messenger service.
- The Send a Message dialog box in Chapter 3: LAN Manager Screen, for information about sending a message using the LAN Manager screen.

NET START MESSENGER

This command starts the MS-DOS LAN Manager Enhanced Messenger service.

Syntax



Option	Purpose
<i>computername</i>	Specifies the computer name of your netstation.
<i>/sizmessbuf:n</i>	Sets the size of the message buffer, in bytes. The maximum size allowed is 62,000 bytes.

NOTE: This command also accepts any options you can specify with the NET START WORKSTATION command. See the NET START WORKSTATION command in this chapter for a complete listing.

Comments

There are three services you may run on your netstation: Workstation, Netpopup, and Messenger. The Messenger service allows you to send messages to others on the local area network and to receive messages from them.

The services section of the LANMAN.INI file contains the pathnames for all of the services.

NOTE: To start the Messenger service automatically when you start the Workstation service, add Messenger to the services listed by the wrkservices= entry in your LANMAN.INI file.

Example

John wants to be able to send and receive messages over the local area network. To start the Messenger service, he types:

```
net start messenger
```

See Also

For more information about this command, see:

- The NET START WORKSTATION command in this chapter, for information about starting the Workstation service.
- The NET START NETPOPUP command in this chapter, for information about starting the Netpopup service.
- The NET SEND command in this chapter, for information about sending messages to others on the local area network.
- The NET NAME command in this chapter, for information about creating aliases on your netstation.
- The Message Menu and related dialog boxes in Chapter 3: LAN Manager Screen Reference, for information about sending and receiving messages while working from the LAN Manager screen.
- The *3+Open MS-DOS LAN Manager User Guide*, for further instructions about using the Messenger service.

NET START NETPOPUP

This command starts the MS-DOS LAN Manager Enhanced Netpopup service.

Syntax

NET START NETPOPUP |

Comments

The Netpopup service is one of three services you may run on a netstation. The other two are Workstation and Messenger. Before you can start the Netpopup service, the Workstation service must be running. If you try to start the Netpopup service first, MS-DOS LAN Manager Enhanced offers to start the Workstation service first.

The Netpopup service displays messages sent to you via the local area network as soon as they are received. Each message appears in a message box that is displayed on top of the current contents of your screen. After you read your message, you can press [Esc] to remove the message box from your screen.

The services section of the LANMAN.INI file contains the pathnames for all of the services.

Example

John wants to see a message on his screen as soon as someone sends it. He types the following to start the Netpopup service:

```
net start netpopup
```

See Also

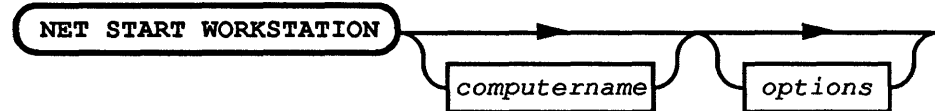
For more information about this command, see:

- The NET START WORKSTATION command in this chapter, for information about starting the Workstation service.
- The NET START MESSENGER command in this chapter, for information about starting the Messenger service.
- The NET NAME command in this chapter, for information about creating aliases on your netstation.
- The Message Menu and related dialog boxes in Chapter 3: LAN Manager Screen Reference, for information about sending and receiving messages while working from the LAN Manager screen.
- The *3+Open MS-DOS LAN Manager User Guide*, for further instructions on using the Netpopup service.

NET START WORKSTATION

This command starts the MS-DOS LAN Manager Workstation service and sets other options for the netstation.

Syntax



computername is the name of the netstation.

options include one or more of the following:

Option	Specifies
<i>/charcount:bytes</i>	Maximum amount of data stored by your netstation before data is sent to a network pipe. Increasing the amount of data increases local area network efficiency, but may cause some delay in character transmission.
<i>/chartime:milliseconds</i>	Maximum interval that your netstation stores data before sending it to a network pipe.
<i>/computername:name</i>	Computer name for your netstation.
<i>/himem:[yes no optional]</i>	Whether high memory allocation is used by the netstation. If this is selected, the netstation will determine whether to utilize high memory.
<i>/keepapis:[yes no]</i>	Whether MS-DOS LAN Manager Enhanced Application Program Interfaces (APIs) are available to applications. If no is selected, only named-pipe APIs are available.

Option	Specifies
<i>/langroup:name</i>	Name of the user's default LAN group. Your LAN group determines which servers you can see with the NET VIEW command.
<i>/lanroot:name</i>	Name of the root directory into which MS-DOS LAN Manager software is stored.
<i>/logonserver:name</i>	Name of the server on which logon information will be found. When centralized logon security is used, <i>name</i> can be either a specific computer name or * (* tells the netstation to search for the centralized logon server).
<i>/mailslots:[yesno]</i>	Indicates whether mailslot delivery is nonguaranteed.
<i>/numcharbuf:number</i>	Number of character and pipe buffers.
<i>/nummailslots:number</i>	Number of mailslots available.
<i>/numresources:number</i>	Maximum number of connections to shared resources allowed on the netstation at a time.
<i>/numservers:number</i>	Maximum number of servers with which the netstation can have active connections.
<i>/numviewbuffers:number</i>	Number of buffers available for receiving information from a server.
<i>/numviewedservers:number</i>	Maximum number of servers that can be viewed with the NET VIEW command.
<i>/numworkbuf:number</i>	Number of netstation buffers to allocate.
<i>/pr1buffsize:bytes</i>	Number of buffers available for printer connection 1.

Option	Specifies
<i>/pr2buffsize:bytes</i>	Number of buffers available for printer connection 2.
<i>/pr3buffsize:bytes</i>	Number of buffers available for printer connection 3.
<i>/sizcharbuf:bytes</i>	Size of the character/pipe buffer.
<i>/sizworkbuf:bytes</i>	Size of each netstation buffer.
<i>/wrkservices:list</i>	Services that will start along with the netstation.

NOTE: The following switches are provided for compatibility with the NET START WORKSTATION command in 3+:

Option	Specifies
<i>/z:bytes /nbs:bytes</i>	Size of netstation buffers.
<i>/B:n /nbc:n</i>	Number of netstation buffers.

Comments

NET START WORKSTATION is available under both MS-DOS LAN Manager Basic and MS-DOS LAN Manager Enhanced. However, under Enhanced the command takes a number of options, the most important of which is *computername*. The *options* portion of the command allows you to temporarily override the internal operating settings of MS-DOS LAN Manager Enhanced. Normally, this will not be necessary; these settings, contained in your netstation's LANMAN.INI, were selected by your network administrator during installation as the ones appropriate for your network. If you believe any of these options should be changed, consult your network administrator.

If *computername* is not specified with the NET START command, the computer name listed in the *computername=* entry of the LANMAN.INI file is used.

For convenience, the NET START WORKSTATION command is inserted into your workstation's AUTOEXEC.BAT file by the 3+Open MS-DOS LAN Manager setup program.

All options that work with the NET START WORKSTATION command also work with the NET START MESSENGER command (provided you have MS-DOS LAN Manager Enhanced), if the netstation is not yet started.

Example

John has removed the NET START WORKSTATION line from his AUTOEXEC.BAT file. When John arrives at the office in the morning, he turns on his computer and types the following command to start the Workstation service:

```
net start workstation
```

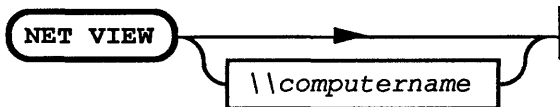
To start his netstation with a different computer name, John could type:

```
net start workstation /computername:john_oclare
```

NET VIEW

This command displays the computer names of all 3+Open network servers in your LAN group or, alternately, the resources being shared by a 3+Open server.

Syntax



Option	Purpose
<code>\\computername</code>	Specifies the server whose shared resources you want to view.

When used without options, the NET VIEW command displays the computer names of all servers visible on the local area network. For example:

Server Name	Remark
<code>\\MIS</code>	Mary Sullivan's office
<code>\\PRINT1</code>	Printer room, first floor
<code>\\PRINT2</code>	Printer room, second floor

The command completed successfully.

Comments

The NET VIEW command is provided so that you can see:

- Which 3+Open servers in your LAN group are available for you to use.
- Which resources are shared with the local area network by each available 3+Open server.

NET VIEW will not display 3+ servers.

Once you know the computer name of a 3+Open server, you can type the NET VIEW command followed by the server's computer name to see what resources the 3+Open server is sharing with the local area network. For example:

```
net view \print1
```

```
Resources at \PRINT1  
Printer room, first floor
```

Net Name	Type	Used as	Remark
PRT	Print	LPT2	Printer pool
FAST PRT	Print	LPT1	High priority printer
D	Disk	R:	Drive D Root

The command completed successfully.

This display shows:

Column	Contents
Net Name	Sharename of a shared resource.
Type	Type of resource being shared.
Used as	Your netstation's local device name that is currently redirected to this shared resource.
Remark	Descriptive comment about the resource.

Example

To see the computer names of the servers available in her LAN group, Jenny types:

```
net view
```

One of the servers listed is `\\mis`. To see the resources being shared by `\\mis`, Jenny types:

```
net view \\mis
```

Now that she knows the computer name of the server and what it is sharing, Jenny can use the NET USE command to actually connect to `\\mis` and use its shared resources.

See Also

For more information about this command, see:

- The NET USE command in this chapter, for information about using a resource shared by a server.
- The Servers Available on Network dialog box in Chapter 3: LAN Manager Screen Reference, for information about using the LAN Manager screen to see the computer names of available 3+Open servers.



Chapter 3: LAN Manager Screen Reference

With the LAN Manager screen, you use menus and dialog boxes to perform MS-DOS LAN Manager Enhanced operations. The LAN Manager screen is only available to users running MS-DOS LAN Manager Enhanced. If you are using the Basic version of MS-DOS LAN Manager, LAN Manager Screen is not available to you, and you can only use Basic commands; those commands are documented in Chapter 2: MS-DOS LAN Manager Command Reference.

This chapter contains individual reference pages that describe how to use the menus and dialog boxes of the LAN Manager screen.

3 LAN Manager Screen Reference

3-2

This chapter includes the following information:

- Using the LAN Manager screen and its menus, dialog boxes, and help facility
- Reference pages for the View menu and related dialog boxes
- Reference pages for the Message menu and related dialog boxes
- Reference pages for the Config menu and related dialog boxes

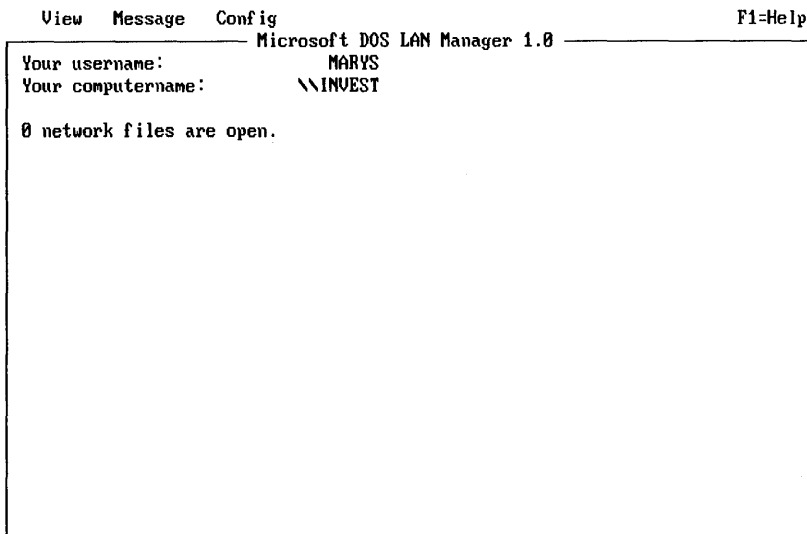
For more information about how to use the MS-DOS LAN Manager Enhanced menus and dialog boxes, see the 3+ *Open MS-DOS LAN Manager User Guide*.

Using the LAN Manager Screen

To display the LAN Manager Screen, type the following command at the MS-DOS prompt:

```
net
```

Your screen will look something like this:



Press the ALT key to select a menu

Figure 3-1. LAN Manager Screen

The LAN Manager screen includes the following elements:

- **Menu bar**, which lists the names of all LAN Manager screen menus, and a special item, F1=Help.
- **Action area**, which provides information about your netstation, and provides a place for menus, dialog boxes, help boxes, and message boxes to be displayed.
- **Message line**, which provides a short description of the selected option.

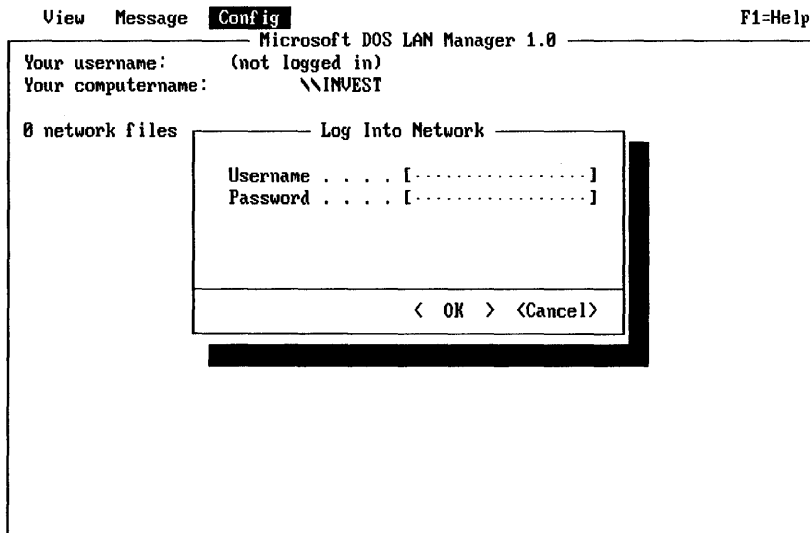
Netstation Information

The LAN Manager screen includes the following display fields:

Field	Description
Your username	Name you used to log on.
Your computername	Name of your netstation. A computer name is always preceded with two backslashes (\).
# network files are open	Number of local area network files you are currently using.

Logging On

The Log Into Network dialog box appears automatically when you start the LAN Manager Screen, if you are not already logged on.



Log on to the local-area network

Figure 3-2. Log Into Network Dialog Box

This dialog box allows you to log on to the 3+Open network or to set your user name and password. Once your user name and password are set, you can access resources such as printers and files on the local area network.

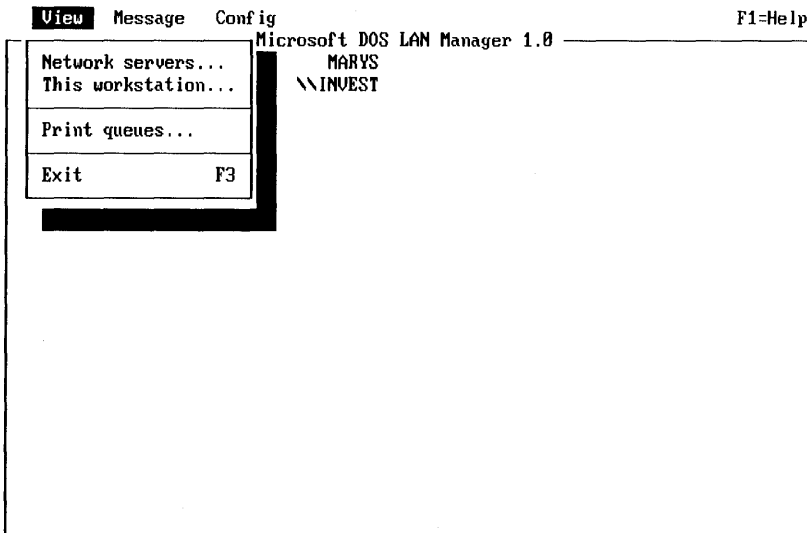
The Log Into Network dialog box only logs you on to the 3+Open network. You *must* use the LOGON command, described in Chapter 2: MS-DOS LAN Manager Command Reference, to log on to a network that contains the 3+ Name service.

For complete information about this dialog box, see the Log Into Network dialog box reference page.

Selecting Menus and Menu Items

You can use either the keyboard or a mouse to select menus and items from menus. Your mouse must be either a Microsoft mouse or a compatible mouse. To select an item using the mouse, simply move the mouse pointer to the item and click on it.

To view a menu using the keyboard, press [Alt], followed by the first letter of the menu name. A menu appears below the menu name. For example, if you press [Alt]+V, the View menu appears:



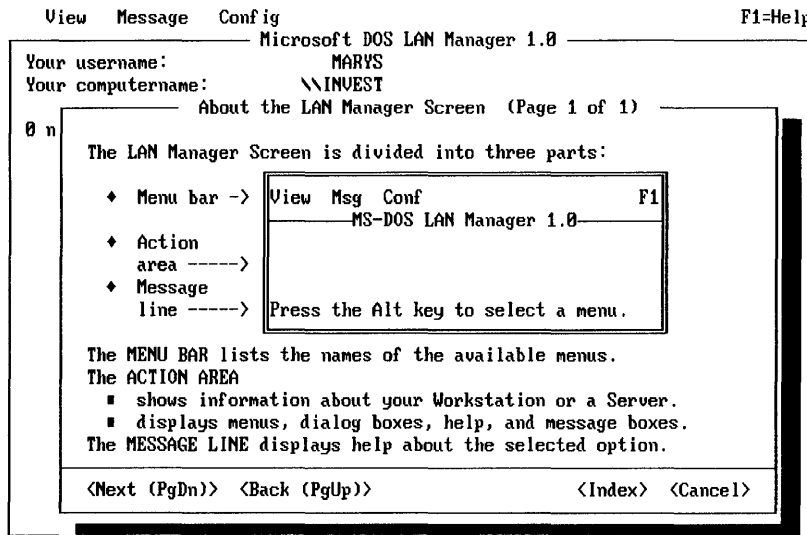
View local-area network Servers

Figure 3-3. View Menu

A menu contains one or more options, called menu items. Except for the Exit menu item, any menu item you select leads to a dialog box. Use the cursor keys or the mouse to select a menu item. (To exit the LAN Manager screen, select the View menu and choose the Exit menu item.)

Using Help

You can use the LAN Manager screen help facility to get more information about an option you have selected. When you press [F1] (or click on the F1=Help item in the menu bar using the mouse), a help box like that shown here displays information about the task that you are performing:



Press the ALT key to select a menu

Figure 3-4. Help Box

Help is context-sensitive, meaning that it provides you with information about what you are doing. For example, if you select the This netstation menu item and press [F1], a help box appears, showing information about how to use this option. If you have not selected a menu, menu item, or dialog box, Help displays general information about the LAN Manager screen.

By selecting the Index command button from any help box, you can see the Help index. From the Help index, you can choose to see information about other topics.

3 LAN Manager Screen Reference

3-8

Using Dialog Box Elements

When you choose a menu item, a corresponding dialog box appears:

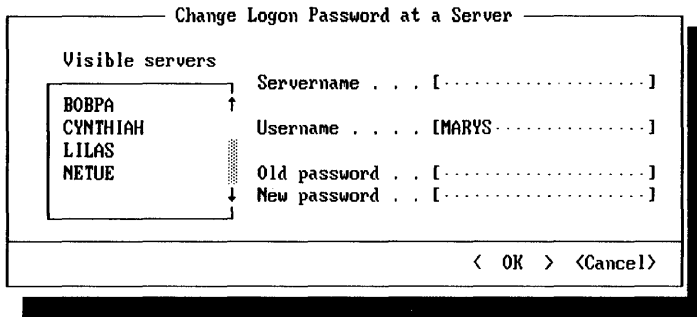


Figure 3-5. Sample Dialog Box

Dialog boxes include one or more elements. The following lists all possible dialog box elements and how to use them:

Element	How to use it
List box	Use the cursor keys to select a list box item.
Text box	Type in information, or select information from a list box.
Command button	Use [Tab] to select a command button.
Option button	Use the cursor keys to mark (enable) one option button in a set.
Check box	Use the [Space bar] to mark or unmark a check box.
Display field	Contains information only; cannot be selected or changed.

Each dialog box reference page in this chapter identifies the dialog box by:

- Name
- Series of options you must select to access it
- Access paths

The access path for a dialog box is documented in this form:

Menu -> Menu Item -> Command Button

This path shows how to reach the dialog box by selecting a series of options. Options are separated by arrows. For example, a typical access line might look like this:

View -> Print queues -> Zoom

In other words, to get to this dialog box, you would perform these steps:

1. **Select the View menu.**
2. **Choose the Print queues menu item.**
3. **From the dialog box that appears, choose the Zoom command button.**

Menus and Dialog Boxes in This Chapter

The remainder of this chapter contains reference pages for the LAN Manager screen menus and dialog boxes shown in the following list. Note that menus and dialog boxes are arranged in this chapter according to access path.

The following list shows the access path and name of each menu and dialog box documented in this chapter:

Select	To see...
View ->Network servers ->Zoom ->Use ->This netstation ->Add use ->OK ->Zoom ->Print queues ->Zoom ->Zoom ->Zoom	View menu Servers Available on Network Resources at <Server> Use the resource <Network Path> Network Resources in Use at Your Workstation Use a Network Resource Accessing <Network Path> Usage Information for a Network Resource Show Print Queues For Print Queues for <Server> Print Options for Job Printing Options for Queue
Message ->Send ->Aliases ->Add alias	Message menu Send a Message Aliases for Messaging Add an Alias
Config ->Logon ->Logoff ->Load profile ->Save profile ->Change password	Config menu Log Into 3+Open Network Log Off From the 3+Open Network Load Configuration Save Configuration Change Logon Password at a Server

View Menu

The View menu items let you use dialog boxes that provide you with information about resources on the local area network. Some of these dialog boxes show the resources being shared by servers. Others show the status of the resources you are using.

A resource can be a printer queue or a disk directory that can be shared by a server on the local area network.

The View menu has four items, three of which are described in detail on the next several pages. Each menu item displays several dialog boxes; these are explained in the section on the menu item which displays them.

The last item on the View menu is labeled Exit [F3]. Use this menu item (or press [F3]) to exit the MS-DOS LAN Manager screen.

View -> Network Servers

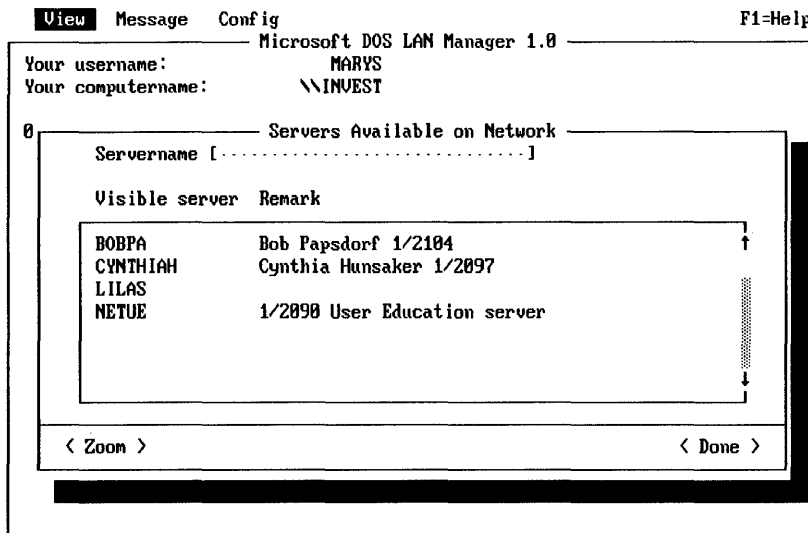
This menu item displays the Servers Available on Network dialog box. This dialog box shows the names and comments for 3+Open servers that are part of your network. From here you can:

- Select the computer name of a 3+Open server to list its shared resources.
- Type the computer name of any 3+ server on the network to list its shared resources.
- Use a shared resource from a server.
- Stop using a shared resource.

Servers Available on Network

Access: **View -> Network servers**

The Servers Available on Network dialog box shows the servers available on the local area network. These servers can control resources such as disks and printer queues. If a server is sharing resources, you can use a shared resource by redirecting a local device name to the network resource. Select the name of a server and the Zoom command button to see a list of resources being shared by a particular server.



View local-area network Servers

Figure 3-6. Servers Available on Network Dialog Box

This dialog box contains one list box with two columns:

Column	Contents
Visible server	Computer names of all visible servers.
Remark	Descriptive comment about each server.

The other elements of the dialog box are:

- Servername** Specifies the computer name of a server that you want to display more information about.
- Zoom** Displays the Resources at (Server) dialog box.
- Done** Exits the dialog box and returns to the LAN Manager screen.

Listing a Server's Resources

To see detailed information about a particular server, follow these steps:

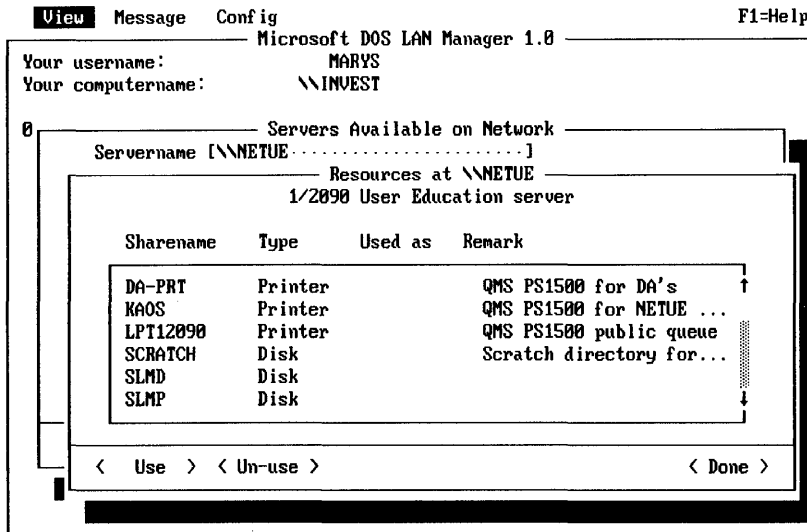
1. **Select the computer name of the server from the list box, or type in the server's computer name in the text box.**
2. **Choose the Zoom command button.**

The Resources at (Server) dialog box appears.

Resources at (Server)

Access: **View -> Network servers -> Zoom**

The Resources at (Server) dialog box shows the shared resources controlled by a server. It shows the name of the shared resource, device type, redirected device name, and a comment about the server. With this dialog box, you can use or stop using a network resource.



View local-area network Servers

Figure 3-7. Resources at (Server) Dialog Box

This dialog box contains one list box with four columns:

Column	Contents
Sharename	Name of each shared resource controlled by the server.
Type	Type of resource shared. A shared resource can be a disk or a printer.
Used as	Local device name linked to the shared network resource. (If you have more than one local device name connected to a shared network resource, the first local device name, followed by ellipses [...], appears here.)
Remark	Descriptive comment about the shared resource.

The other elements of this dialog box are:

- Use** Displays the Use the resource (network path) dialog box.
- Un-use** Disconnects the local device name from the network resource.
- Done** Returns to the servers Available on Network dialog box.

Using a Network Resource

To use a network resource, follow these steps:

1. **From the list box, select the name of the resource.**
2. **Choose the Use command button.**

The Use the Resource (Network Path) dialog box appears. The Local device text box may display a default device name.

3. **Type the device name you want and the password (if necessary) and choose the OK command button to connect your local device name to the shared resource.**

Stop Using a Network Resource

To stop using a network resource, follow these steps:

1. **From the list box, select the name of the resource.**
2. **Choose the Un-use command button.**

A message box appears, asking you to confirm your decision:

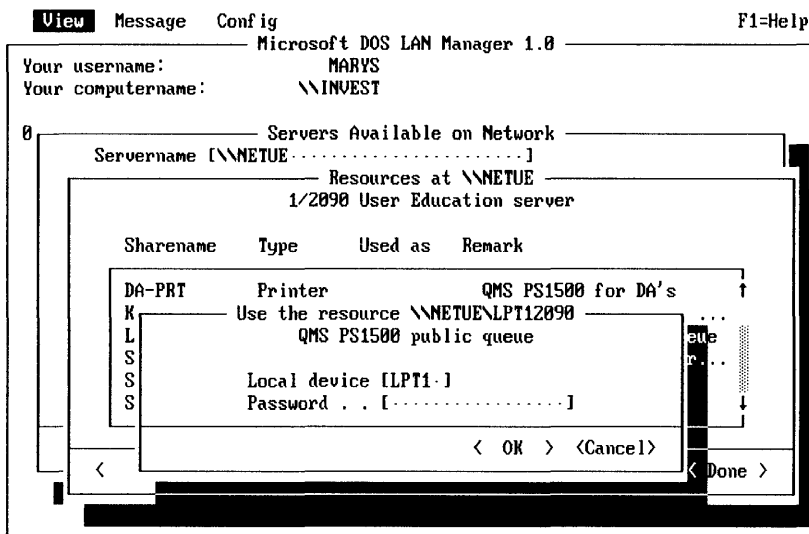
(Do you wish to stop using \\server\sharename?)

3. **Choose the OK command button to disconnect your local device name from the shared resource.**

Use the Resource (Network Path)

Access: View -> Network servers -> Zoom -> Use

The Use the Resource (Network Path) dialog box allows you to use a shared resource on a server. Depending on the type of shared resource you selected before entering this dialog box, a default local device name may appear in the first edit field.



View local-area network Servers

Figure 3-8. Use the Resource (Network Path) Dialog Box

This dialog box contains the following elements:

- Local device** Specifies the name of a local device name you selected to be redirected to the shared device (drive: for disk devices; LPT# for printers). More than one local device name—separated by commas (,), semicolons (;), or spaces—may be specified here.
- Password** Provides a place for you to type a password for the shared resource, if required. A server requires passwords when share-level security is running. A password is also required if you did not specify a password when logging on and this is the first shared resource to which you are connecting.
- OK** Redirects the local device name to the shared resource.
- Cancel** Exits the dialog box without redirecting to the resource, and returns to the Shared Resources at (Server) dialog box.

Connecting to a Shared Resource

To use the selected shared resource, follow these steps:

1. **Type the local device name (for example, E: or LPT2:) in the Local device text box.**

MS-DOS LAN Manager Enhanced typically suggests an available local device name for you to use. You may accept the default device name or type in another device name.

2. **If needed, type the password in the Password text box.**
3. **Choose the OK command button.**

View -> This Workstation

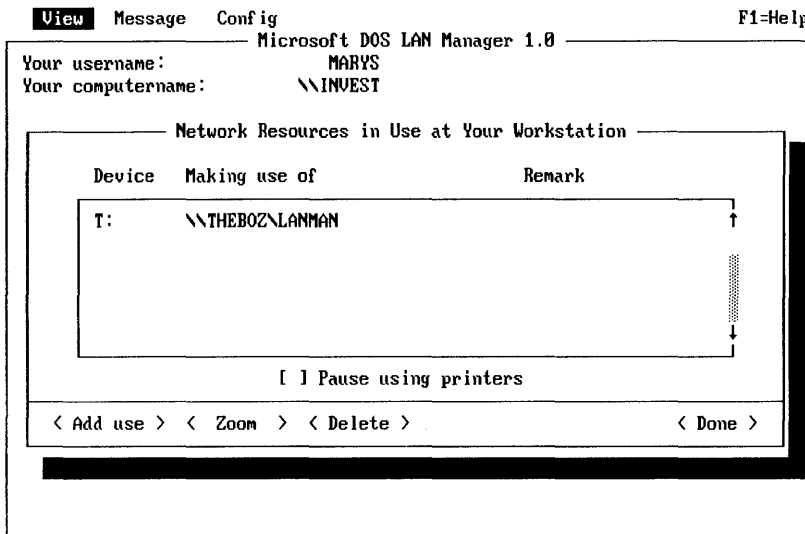
This menu item displays the Network Resources in Use at Your Workstation dialog box. This dialog box shows all shared resources the local netstation is using. From here, you can:

- Get more information about one of your netstation's current connections.
- Temporarily pause the use of shared printers from your netstation.
- Add a connection to a network resource.
- Delete a connection to a network resource.

Network Resources in Use at Your Workstation

Access: **View -> This workstation**

The Network Resources in Use at Your Workstation dialog box shows the local device names for the shared resources that you are using, listed according to the local device name that you have assigned to the shared resource. From this dialog box, you can add or delete a resource, or see more information about it.



View resources used by your workstation

Figure 3-9. Network Resources in Use at Your Workstation Dialog Box

This dialog box contains one list box with three columns:

Column	Contents
Device	Local device name.
Making use of	Network path of the shared resource (in the format <code>\\server\resource</code>).
Remark	Descriptive comment about the resource.

The remaining elements of this dialog box are:

- Pause using printers** Suspends redirection of local device names to shared resources and frees them for local use.
- Add use** Displays the Use a Network Resource dialog box.
- Zoom** Displays the Usage Information for a Network Resource dialog box.
- Delete** Disconnects a local device name from a shared resource.
- Done** Exits the dialog box and returns to the LAN Manager screen.

Adding a New Connection

To connect to a new shared resource, follow this step:

- 1. Choose the Add use command button.**

The Use a Network Resource dialog box appears, allowing you to use the shared network resource you specify.

Deleting a Connection

To disconnect a local device name from a shared resource, follow these steps:

1. **Select the device name from the list box.**
2. **Choose the Delete command button.**

Getting More Information About a Network Resource

To get more information about a network resource, follow these steps:

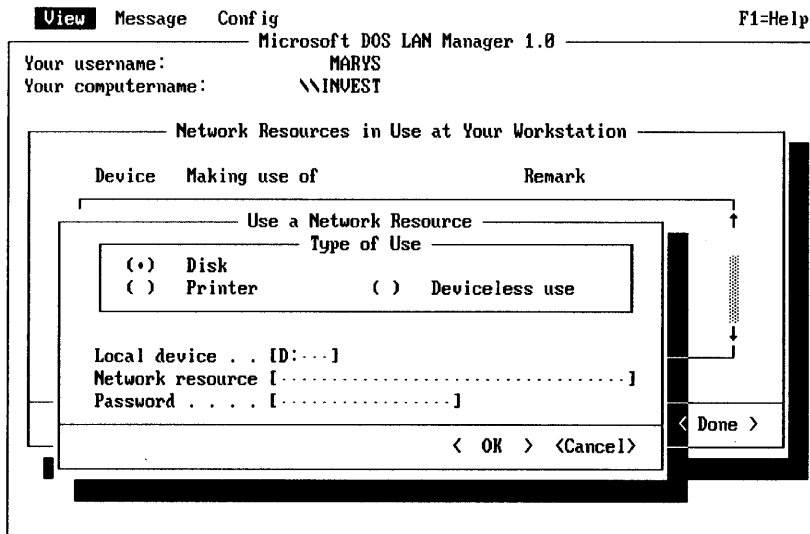
1. **From the list box, select the name of the network resource.**
2. **Choose the Zoom command button.**

The Usage Information for a Network Resource dialog box displays detailed information about the selected local device.

Use a Network Resource

Access: **View -> This workstation-> Add use**

The Use a Network Resource dialog box allows you to connect one of your local device names (such as LPT1 or Z:) to a shared network resource.



View resources used by your workstation

Figure 3-10. Use a Network Resource Dialog Box

Local device Specifies the name of the local device name to be redirected to the shared resource. The default is the next available device name (drive: for directories; LPT# for printer queues).

Option Buttons This dialog box includes three option buttons:

Button	Function.
Disk	Specifies that you want to use the local device name to connect to a directory.
Printer	Specifies that you want to use the local device name to connect to a spooled printer queue.
Deviceless use	Allows you to connect to a network resource without redirecting a local device name.

Network resource Specifies the network path of the network resource (use the format `\\server\resource`).

Password Specifies a password for the shared resource (if the resource requires a password).

OK Redirects the local device name to the network resource.

Cancel Exits the dialog box and returns to the Network Resources in Use at Your Workstation dialog box without redirecting the shared resource.

Connecting to the Network Resource

To connect a local device name to a shared resource, follow these steps:

1. Select the Disk, Printer, or Deviceless use option button.

MS-DOS LAN Manager Enhanced finds the first available local device name for the device type you select and displays that device name in the Local device text box. (No device name is displayed if you select Deviceless use.)

2. In the Local device text box, type in a new device name (such as E: or LPT2:) if you want to assign another local device name to the network resource.

3. In the Network resource text box, type the network path of the shared resource. A network path includes the name of the server and the shared resource in the format *\server\resource*.

4. If the server or shared device requires a password, type the password in the Password text box.

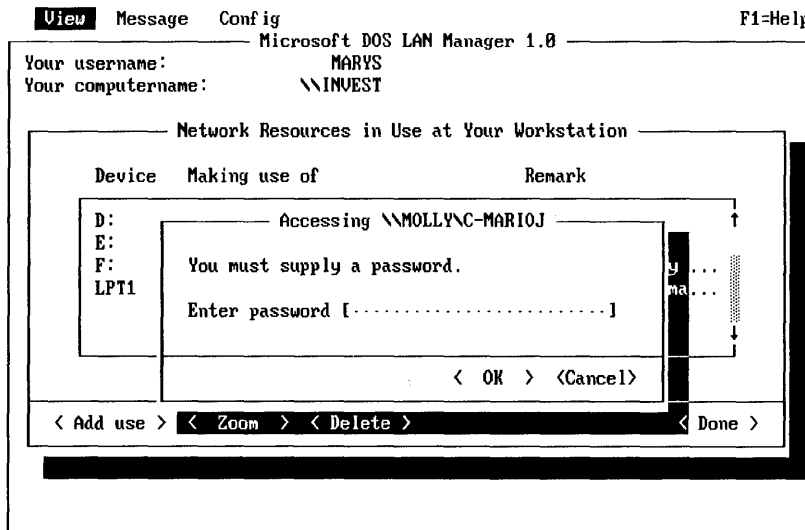
5. Choose the OK command button.

Accessing (Network Path)

Access: **View -> This workstation-> Add use -> OK**

NOTE: The network path consists of the name of a server followed by the name of a resource, in the format `\\server\resource`.

The Accessing (Network Path) dialog box appears if you do not specify a password when connecting to a network resource that requires a password. This dialog box asks you to supply a password for the resource specified.



View resources used by your workstation

Figure 3-11. Accessing (Network Path) Dialog Box

- Enter password** Provides a place for you to type the password for the network resource. This is not the same as your logon password.
- OK** Redirects your local device name to the shared resource if the password you typed is correct.
- Cancel** Exits the dialog box and returns to the Use a Network Resource dialog box.

Supplying a Password

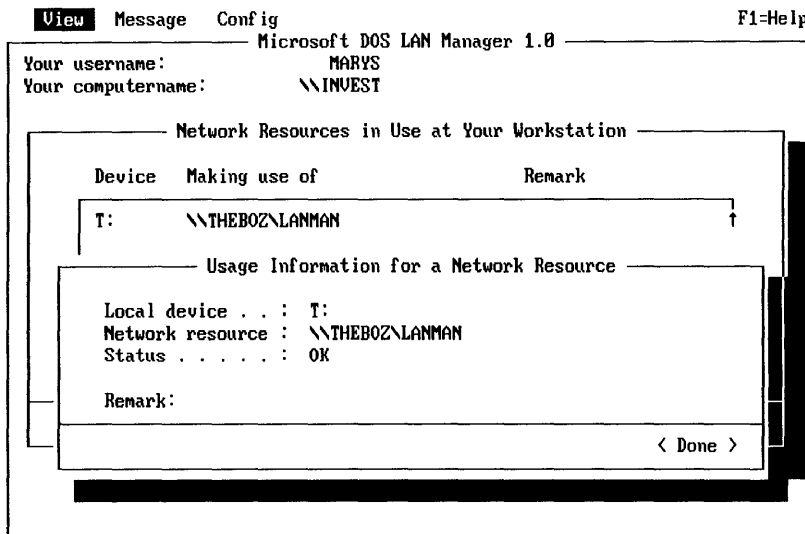
To specify a password for a network resource on an MS OS/2 LAN Manager server running with share-level security, follow these steps:

1. **Type in the password.**
2. **Choose the OK command button.**

Usage Information for a Network Resource

Access: **View -> This workstation -> Zoom**

The Usage Information for a Network Resource dialog box displays information about a local device name connected to a shared network resource. The local device name can be a disk or a printer queue.



View resources used by your workstation

Figure 3-12. Usage Information for a Network Resource Dialog Box

Local device	Displays the local device name assigned to the resource (drive: for directories; LPT# for printer queues).
Network resource	Displays the path of the network resource (in the format <i>\\server\resource</i>).
Status	Displays the status of the local device name. The status can be OK, Disconnected, Error, Connecting, or Reconnecting.
Remark	Displays a descriptive comment about the network resource.
Done	Returns to the Network Resources in Use at Your Workstation dialog box.

View -> Print Queues

This menu item displays the Show Print Queues For dialog box. This dialog box lists all visible servers and the printer queues they own. It also lists all of your netstation's local device names that are connected to printer queues. From here, you can:

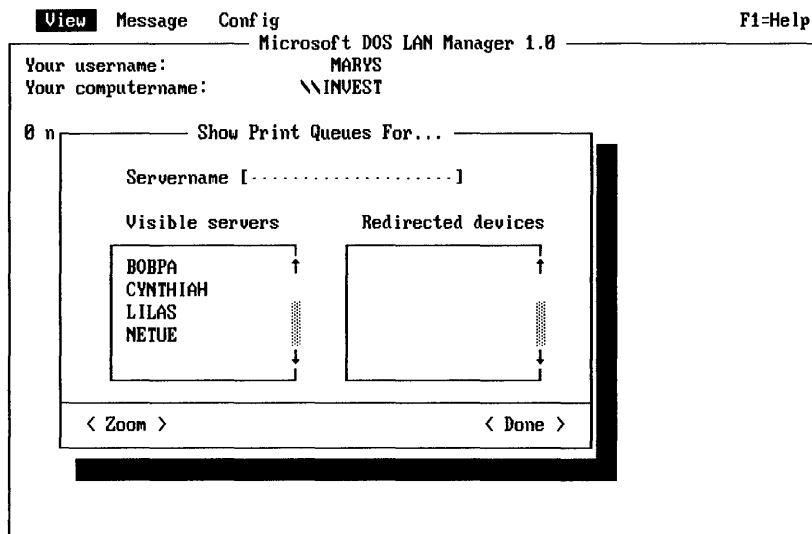
- List the contents of a printer queue connected to a local device name.
- List the printer queues made available by a specific server.
- List the options of a printer queue.
- Modify the status of your print job.

Show Print Queues For

Access: **View -> Print queues**

The Show Print Queues For dialog box lists the names of 3+Open LAN Manager servers in your LAN group and the printer queues each is sharing with the local area network.

This dialog box also shows local device names that are redirected to shared printer queues. From this dialog box, you can select the name of a queue and choose the Zoom command button to see more information about a particular queue.



View spooled print queues

Figure 3-13. Show Print Queues For Dialog Box

Servername	Specifies the computer name of the server you want more information about.
Visible servers	Lists all visible 3+Open LAN Manager servers in your LAN group.
Redirected devices	Lists all of the local device names linked to printer queues.
Zoom	Displays the Print Queues for (Server) dialog box. (You must have access permission for a server to see information about its shared printer queues.)
Done	Exits the dialog box and returns to the LAN Manager screen.

Listing a Server's Printer Queues

To list all printer queues shared by a server, follow these steps:

- 1. Specify the computer name of the server by doing one of the following:**
 - Select the computer name of the server from the Visible servers list box.
 - Type in the name of the server in the Servername text box.
- 2. Choose the Zoom command button.**

Print Queues for (Server)

Access: **View -> Print queues -> Zoom**

The Print Queues for (Server) dialog box shows the printer queues on a server. It also shows the jobs in each printer queue and the status of each queue and job.

The status of a printer queue can be listed as OK, Held, Held until, Pending delete, or Error. The status of a print job can be listed as Spooling, Held, Printing on (device), Held on (device), Out of paper on (device), Error on (device), Offline on (device), or Waiting.

Printer queues are listed in order of priority. Printer queues with lower numbers have higher priority. Jobs in printer queues with high priority are printed before jobs in printer queues with low priority. From this dialog box, users can hold or restart their print job(s). Administrators can also hold or continue a queue.

View Message Config F1=Help
Microsoft DOS LAN Manager 1.0

Your username: MARYS
Your computername: \\INVEST

Print Queues for \\NETUE

Name	Job #	Size	Status
DA-PRT	QUEUE (10 Jobs)		* Queue Active *
JANK	492	75827	Printing on LPT1
JANK	493	82860	Waiting
JANK	494	41662	Waiting
JANK	495	16292	Waiting
JANK	496	609975	Waiting
JANK	497	58200	Waiting
JANK	498	257500	Waiting

<Hold> <Release> <Zoom> <Delete> <Done>

View spooled print queues

Figure 3-14. Print Queues for (Server) Dialog Box

This dialog box contains a list box with four columns:

Column	Contents
Name	Name of the printer queue or owner of the print job.
Job #	Identification number assigned to the print job.
Size	Size (in bytes) of the print job.
Status	Status of the printer queue or job.

The other elements of this dialog box are:

- Hold** Holds the selected print job in the printer queue so it does not print.
- Release** Releases the job from its held state.
- Zoom** Displays either the Printing Options for Job or Printing Options for Queue dialog box and shows detailed information about the selected item.
- Delete** Removes only your selected print job(s).
- Done** Exits the dialog box and returns to the Show Print Queues For dialog box.

Changing the Status of Your Print Job

To change the status of print jobs you own, follow these steps:

1. **Select the job from the list box.**
2. **Choose one of the following command buttons:**
 - Hold, to hold the job in the queue and not print it.
 - Release, to allow a held job to be sent to the printer.
 - Delete, to remove the print job so that it won't be printed.

Getting More Information About a Job or Queue

To learn more about a print job or a printer queue, follow these steps:

1. Select the print job from the list box.

2. Choose the Zoom command button.

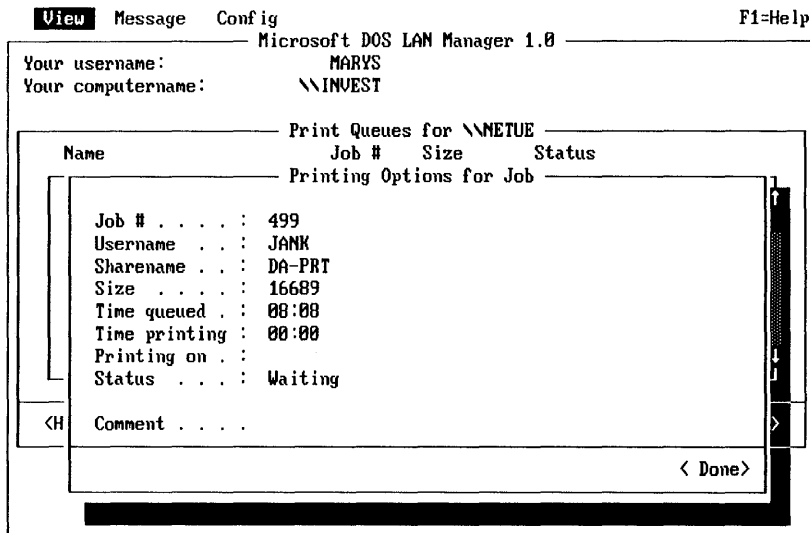
The Printing Options for Queue dialog box appears.

3. When you are finished reading the information, choose the OK command button.

Printing Options for Job

Access: **View -> Print queues -> Zoom -> Zoom**

The Printing Options for Job dialog box displays printing options for a selected job.



View spooled print queues

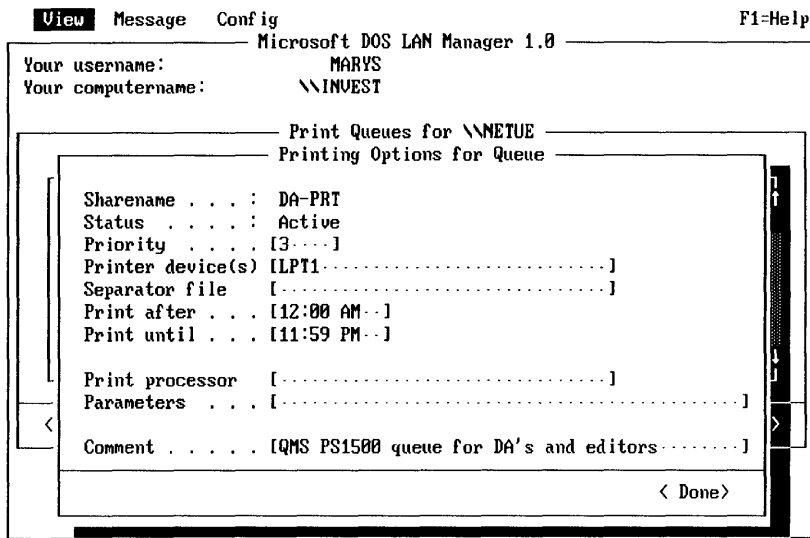
Figure 3-15. Printing Options for Job Dialog Box

Job #	Displays the print job's current position in the queue.
Username	Displays the name of the user who submitted the job for printing.
Sharename	Displays the name of the printer queue containing the job.
Size	Displays the size (in bytes) of the print job.
Status	Displays the status of the print job.
Minutes in queue	Displays the length of time the print job has been in the printer queue.
Minutes printing	Displays the length of time the print job has been printing.
Printing on	Displays the name of the printer.
Remark	Provides a space for you to type a description of the print job.

Printing Options for Queue

Access: **View -> Print queues -> Zoom -> Zoom**

The Printing Options for Queue dialog box displays information for a printer queue. Printer queue options affect how the queue sends print jobs to its printers.



View spooled print queues

Figure 3-16. Printing Options for Queue Dialog Box

Sharename	Displays the name of the printer queue.
Status	Displays the status of the printer queue.
Priority	Specifies the priority setting for the printer queue. The highest priority is 1; the lowest is 9. The default is 5.
Printer device(s)	Specifies the names of the one or more printers to which the printer queue can spool print jobs. Multiple device names are separated by semicolons (;), commas (,), or spaces.
Separator file	Specifies the name of the file that contains the print job separator page. The printer queue prints this page following each print job.
Print after	Specifies the time of day (in the format hh:mm, in which 1:30 p.m. would appear as 13:30) the printer queue is to begin spooling print jobs to printers. The default is 00:00.
Print until	Specifies the time of day (in hh:mm format) after which the printer queue no longer spools print jobs. The default is 23:59.
Print processor	Specifies the name of the print preprocessor (a program that prepares certain document files for the printer).
Parameters	Specifies different parameters used by the print preprocessor.
Comment	Provides a description of the printer queue.
Done	Exits the dialog box and returns to the Print Queues for (Server) dialog box.

Message Menu

The Message menu items let you use the MS-DOS LAN Manager Messenger service. The Messenger service allows you to send messages over the local area network. The Message menu also lets you add or delete aliases that are used in messaging.

The Message menu has two items, which are described on the following pages.

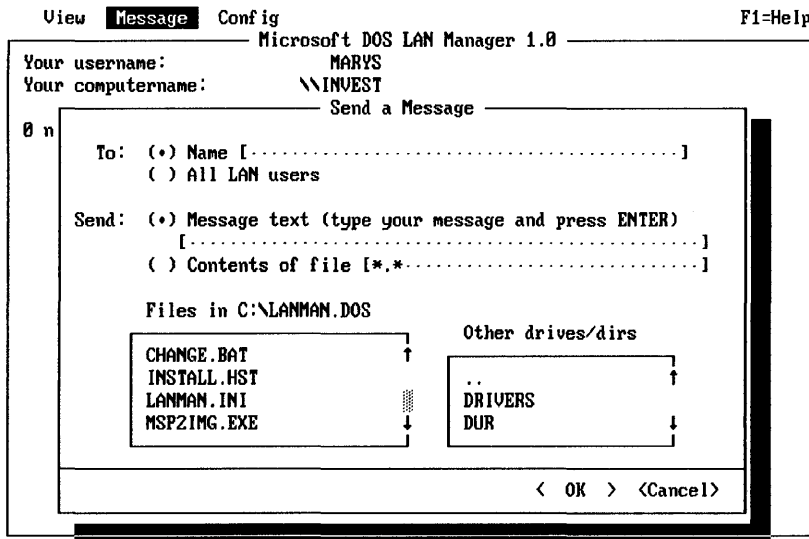
Message -> Send

Selecting Send from the Message menu displays the Send a Message dialog box. In it, you can designate the recipient(s) of your message, and compose a short text message or designate a file to send.

Send a Message

Access: Message -> Send

The Send a Message dialog box allows you to send a message or file to a user on the local area network. The user's alias identifies the destination of your message. If your message is short (less than 255 characters), you can type your message in the space provided. Or, you can use a text editor to create a message file.



Send a message

Figure 3-17. Send a Message Dialog Box

There are several elements in this dialog box:

To Select from two options to specify the recipient:

Option	Function
Name	Sends the message to the alias you type in the Name text box.
All LAN users	Broadcasts the message to all users on the local area network.

Name Specifies the user who is to receive a message or file. You may identify only one recipient.

Send Specifies the type of message you are sending:

Button	Function
Message text	Sends the message you type in the Message text text box.
Contents of file	Sends the message contained in the file specified in the Contents of file text box.

Message text Specifies the message text. You may type up to 255 characters. For a local area network-wide broadcast, the message may be up to 128 characters.

Contents of file Specifies the pathname of a file you want to send.

Files in (directory) Lists the names of files in the current directory. If you specify a wildcard character (* or ?) in the Contents of file text box and choose the OK command button, this list box displays filenames that match the wildcard search.

- Other drives/dirs** Lists the names of disks and directories containing possible message files. Selecting an item changes the contents of the Message filename text box. When you select an item from this list box and choose the OK command button, the contents of the Files in (directory) list box change.
- OK** Sends the message or file to the specified recipient(s) and returns to the LAN Manager screen.
- Cancel** Exits the dialog box without sending the message or file, and returns to the LAN Manager screen.

Sending a Message

To send a message to one or more users of the local area network, follow these steps:

- 1. Specify the recipient(s) of your message by selecting one of the To option buttons.**
- 2. Identify the type of message you want to send.**
- 3. If you want to send a short message, select the Message text option button and type your message.**
- 4. If you are sending the contents of a file, select the Contents of file option button and specify the filename.**

NOTE: If you select the Contents of file option button and use a wildcard character (? or *) in the Contents of file text box, a list of files that match the wildcard search appears in the Files in (directory) list box when you choose the OK command button.

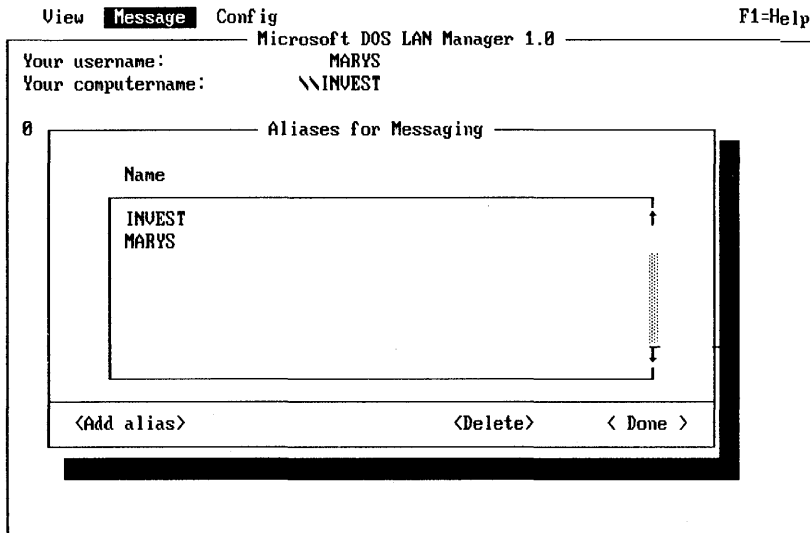
Message -> Aliases

Selecting Aliases from the Messages menu displays the Aliases for Messaging dialog box, which displays aliases currently in effect on your netstation. From this dialog box, you can add or delete aliases.

Aliases for Messaging

Access: **Message -> Aliases**

The Aliases for Messaging dialog box lists aliases for users currently permitted to receive messages at this computer. You can add or delete an alias from the list.



Manage message aliases

Figure 3-18. Aliases for Messaging Dialog Box

This dialog box contains one list box with one column:

Column	Contents
Alias	Message aliases of users permitted to receive messages.

The other elements of this dialog box are:

- Add alias** Displays the Add an Alias dialog box.
- Delete** Removes the selected message aliases from the list of users permitted to receive messages.
- Done** Exits the dialog box and returns to the LAN Manager screen.

Adding an Alias

To add a new alias to your netstation, follow these steps:

1. **Choose the Add alias command button.**
The Add an Alias dialog box appears.
2. **Type the message alias in the text box.**
3. **Choose the OK command button.**

Deleting a Message Alias

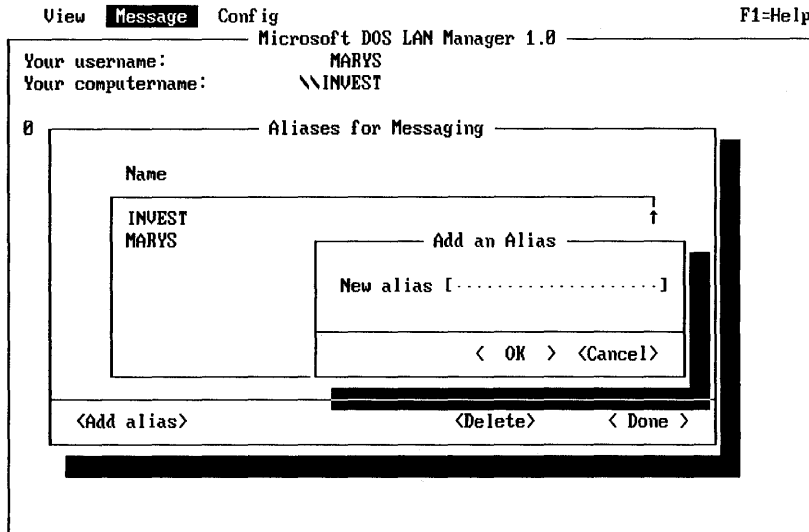
To delete an alias from the list of names that can receive messages at your netstation, follow these steps:

1. **Select the alias from the list box.**
2. **Choose the Delete command button.**

Add an Alias

Access: Message -> Aliases -> Add alias

The Add an Alias dialog box allows you to add a message alias to the list of users allowed to receive messages at this netstation. Until a user's alias is on this list, the user cannot receive any type of message at this netstation.



Manage message aliases

Figure 3-19. Add an Alias Dialog Box

- Alias** Specifies the message alias of a user. This can be an established user name or any other alias for which this netstation should receive messages.
- OK** Adds the specified alias to the list of users permitted to receive messages and returns to the Aliases for Messaging dialog box.
- Cancel** Exits the dialog box and returns to the Aliases for Messaging dialog box without making changes to the list of aliases allowed to receive messages.

Config Menu

The Config menu items give you access to MS-DOS LAN Manager Enhanced configuration dialog boxes. Config, short for Configuration, refers to the connections your netstation makes to local area network resources. The Config dialog boxes let you save and load sets of connections, called **profiles**. From this menu, you can also log on to or log off from the local area network, and change your password.

There are five items on the Config menu. They are explained on the following pages.

Config -> Logon

Selecting Logon from the Config menu displays the Log Into Network dialog box, in which you enter your user name and password.

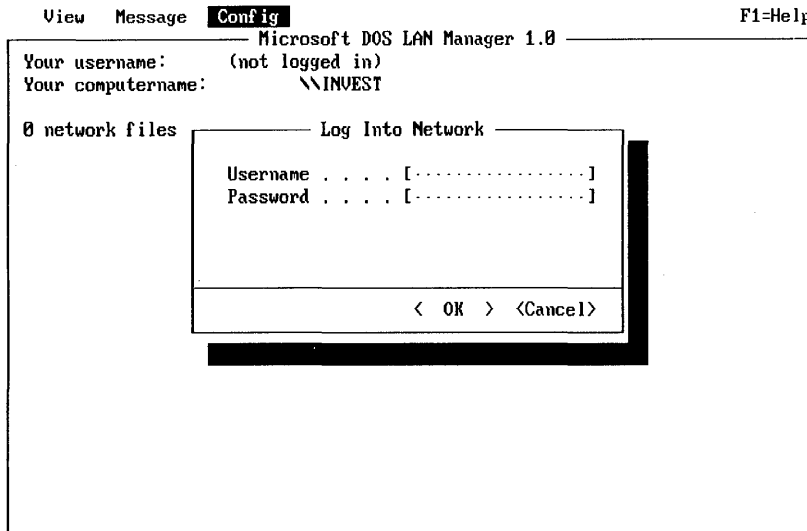
NOTE: This method logs you on to the 3+Open network only; it does not log you on to the 3+ network, or the 3+Name Service, if you are operating in a mixed-network environment. You *must* use the LOGON command, described in Chapter 2, to log on to a mixed network.

Log Into Network

Access: **Config -> Logon**

NOTE: If you are not already logged on, this dialog box appears automatically when you start the LAN Manager screen by typing NET.

The Log Into Network dialog box allows you to log on to the local area network. You can use this dialog box to set your user name and password. Once your user name and password are set, you can access resources such as printers and files on the local area network.



Log on to the local-area network

Figure 3-20. Log Into Network Dialog Box

- Username** Specifies your user name for the local netstation. If your LANMAN.INI file contains your user name, it is proposed as the default name. User names can be up to 20 characters long.
- Password** Specifies your password. Note that MS-DOS LAN Manager Enhanced makes no distinction between uppercase and lowercase letters for user names and passwords. Passwords can be up to 14 characters long.
- OK** Logs on to the local area network and returns you to the LAN Manager screen.
- Cancel** Exits the dialog box and returns to the LAN Manager screen. If you accessed this dialog box when you first started the LAN Manager screen, the Cancel command button returns you to the MS-DOS prompt.

Logging on to MS-DOS LAN Manager

When you establish a session on the local area network, the netstation supplies your user name to the network server. Servers require all netstations requesting a session to supply the user name of the current user.

To log on to MS-DOS LAN Manager Enhanced, follow these steps:

1. At the MS-DOS prompt, type NET; or from the LAN Manager screen, select the Config menu and choose the Logon menu item.
2. In the Username text box, type your user name, if necessary.
3. In the Password text box, type your password, if necessary.
4. Choose the OK command button.

Config -> Load Profile

This menu item displays the Load Configuration dialog box. From here you can load a profile file into the netstation. This file typically includes a set of NET USE commands that configures your netstation by connecting your netstation to network resources on the local area network.

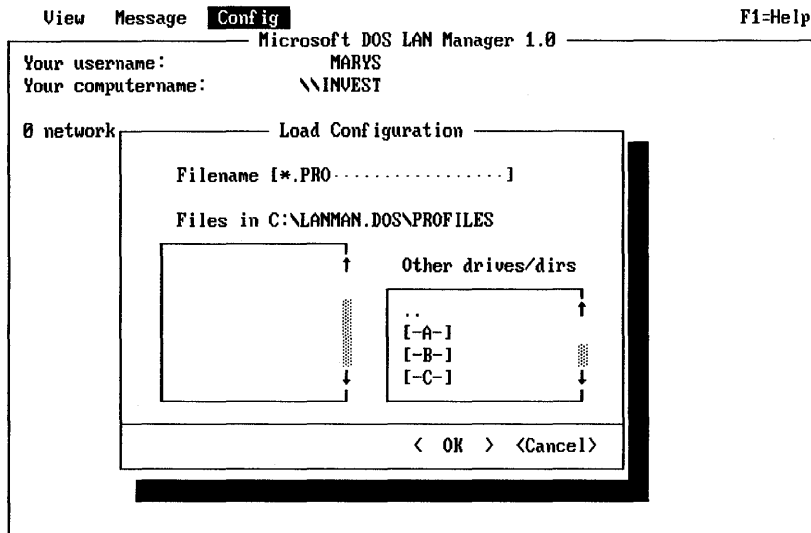
Load Configuration

Access: **Config -> Load profile**

The Load Configuration dialog box loads a set of configuration parameters from a file.

Configurations are stored in profile files containing NET USE commands. These profile files are normally stored in the *\3open\doswksta\profiles* directory and typically include a filename extension of .PRO. The default configuration file is NETLOGON.PRO.

Once you load a profile file with the Load Configuration dialog box, the netstation first deletes all current connections and then runs each local area network command in the profile file. The netstation uses all of the resources defined by the profile file. If MS-DOS LAN Manager Enhanced has a problem running any command in the file, an error message is displayed.



Load an existing profile file for your computer

Figure 3-21. Load Configuration Dialog Box

Filename	Specifies the pathname of the profile file to load.
Files in (directory)	Lists the files in the <code>\\3open\doswksta\profiles</code> directory. If you specify a wildcard character (* or ?) in the Filename text box and choose the OK command button, this list box displays filenames that match the wildcard search.
Other drives/dirs	Lists the disk drives and directories on your computer. Selecting a drive or directory changes the contents of the Filename text box. When you select an item from this list box and choose the OK command button, the contents of the Files in (directory) list box change.
OK	Loads the specified configuration file into the netstation and returns to the LAN Manager screen.
Cancel	Exits the dialog box without loading a file and returns to the LAN Manager screen.

Loading a Profile

To load a profile file for your netstation, follow these steps:

1. From the Files in (directory) list box, select the filename.
2. If needed, from the Other drives/dirs list box, select a different directory.
3. Choose the OK command button.

See Also

For more information about configuration commands, see:

- The Save Configuration dialog box in this chapter, for information about loading a profile file with the LAN Manager screen.
- The NET USE command in Chapter 2: MS-DOS LAN Manager Commands, for information about connecting to a shared resource.
- The NET SAVE and NET LOAD command in Chapter 2: MS-DOS LAN Manager Commands, for information about saving and loading netstation configurations to and from a profile file.
- The *3+Open MS-DOS LAN Manager User Guide*, for information about saving or loading a configuration file.

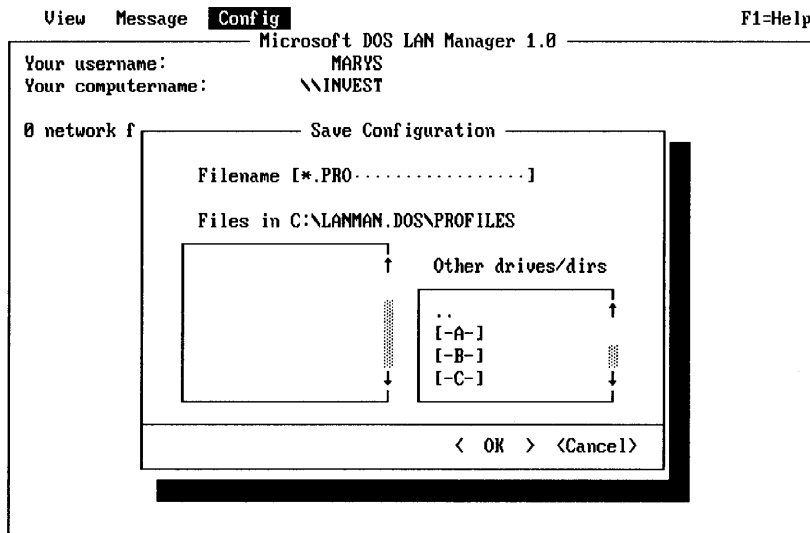
Config -> Save Profile

This menu item displays the Save Configuration dialog box. This allows you to store the netstation's current configuration as a profile file.

Save Configuration

Access: **Config -> Save profile**

The Save Configuration dialog box saves a list of the netstation's current local area network connections to a specific profile file.



Save your current local-area network connections to a profile file

Figure 3-22. Save Configuration Dialog Box

Filename	Specifies the pathname of the profile file.
Files in (directory)	Lists the files in the <code>\3open\doswksta\profiles</code> directory. If you specify a wildcard character (* or ?) in the Filename text box and choose the OK command button, this list box displays file names that match the wildcard search.
Other drives/dirs	Lists the disk drives and directories on your computer. Selecting an item in this list box changes the contents of the Filename text box. When you select an item from this list box and choose the OK command button, the contents of the Files in (directory) list box change.
OK	Stores the server's current configuration to the specified file before exiting the dialog box and returning to the LAN Manager screen.
Cancel	Exits the dialog box and returns to the LAN Manager screen without saving the configuration to the profile file.

Saving Your Current Configuration

To save a list of your netstation's current local area network connections to a profile file, follow these steps:

- 1. Specify the filename of the profile in one of two ways:**
 - Type the name of the file in the Filename text box.
 - Select the name of an existing file from the Files in (directory) list box. The contents of this file will be replaced with the new profile information.
- 2. Choose the OK command button.**

See Also

For more information about configuration commands, see:

- The Load Configuration dialog box in this chapter, for information about loading a profile file with the LAN Manager screen.
- The NET USE command in Chapter 2: MS-DOS LAN Manager Commands, for information about connecting to a shared resource.
- The NET SAVE and NET LOAD commands in Chapter 2: MS-DOS LAN Manager Commands, for information about saving and loading netstation configurations to and from a profile file.
- The *3+Open MS-DOS LAN Manager User Guide*, for information about saving or loading a configuration file.

Config -> Change password

This menu item displays the Change Logon Password at a Server dialog box. From here you can change your password on a 3+Open server.

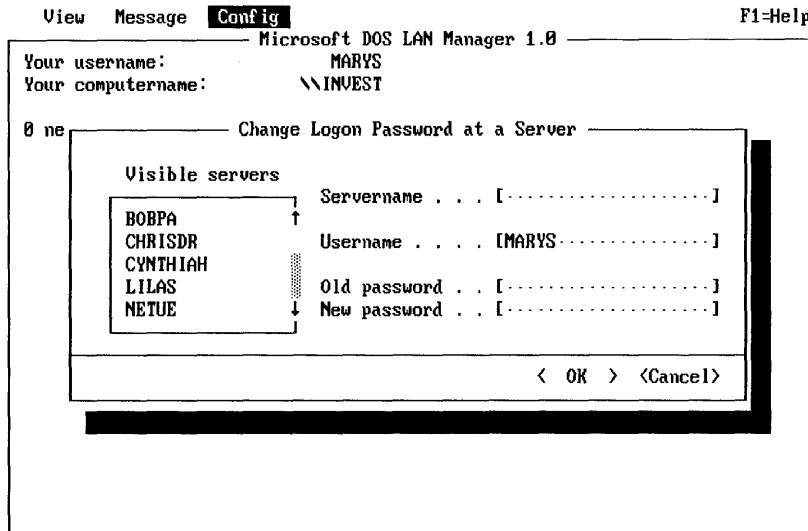
Change Logon Password at a Server

Access: **Config -> Change password**

The Change Logon Password at a Server dialog box changes your account's password on a network or local server running with user-level security. To change your password, you must have an account on the server. It is a good idea to change passwords regularly; this makes it difficult for other users to log on in your place and use your account without your authorization.

NOTE: You can only change your logon password on a 3+Open server using this method. You must use the LOGON command at the MS-DOS prompt if you want to change your password on a 3+ network using the 3+Name service.

NOTE: If you try to change your password on a 3+Open LAN Manager server running with share-level security, an error message displays. This is because these servers do not maintain user passwords.



Change your password at a Server

Figure 3-23. Change Logon Password at a Server Dialog Box

- Visible servers** Lists the names of all servers for the network.
- Servername** Displays the name of the server selected from the Visible servers list box. You can also type the name of the server here.
- Username** Specifies your user name. If you are currently logged on to MS-DOS LAN Manager Enhanced, your user name automatically appears in this text box.
- Old password** Specifies the old password to your account.

- New password** Specifies the new password to your account.
- OK** Changes your password and returns to the LAN Manager screen.
- Cancel** Exits the dialog box without changing your password, and returns to the LAN Manager screen.

Changing Your Password

To change your password on a server, follow these steps:

1. **From the Visible servers list box, select the server, or type the name in the servername text box.**
2. **In the Username text box, type your user name, if necessary.**
3. **In the Old password text box, type your current password.**
4. **In the New password text box, type the new password.**
5. **Choose the OK command button.**

See Also

For more information about passwords, see:

- The Log Into Network reference page, for information about using a password to log on to a netstation.
- The *3+Open MS-DOS LAN Manager User Guide*, for information about using a password to access server resources.

Appendix A: Error Messages

This appendix shows all error messages that can be displayed on your screen by DOS LAN Manager.

LOGON/LOGOFF Error Messages

LOG0000:	Incorrect parameter
LOG0001:	Incorrect parameter value
LOG0002:	Incorrect redirector version
LOG0003:	Redirector not loaded
LOG0004:	Network is not installed
LOG0005:	Internal error
LOG0006:	Incorrect password
LOG0007:	Access denied
LOG0008:	Sharename not found
LOG0009:	Network name not found
LOG0010:	Duplicate name on network
LOG0011:	Computer name already in use
LOG0012:	Unable to set redirector name
LOG0013:	Insufficient memory
LOG0014:	Unable to delete messenger names
LOG0015:	Unable to add messenger name

A

LOG0016: Unable to link. Drive is already redirected
LOG0017: Unable to link. This is a local drive
LOG0018: Execution stopped by the user
LOG0019: Computer name not defined
LOG0020: Must use DOS 3.0 or greater
LOG0021: The device is being used by an active process
LOG0022: You are not currently logged on
LOG0023: DOS error
LOG0024: User abort
LOG0025: Invalid 3+Name Service user name
LOG0026: operation did not complete
LOG0027: Already logged on
LOG0028: User name not found

3+Name Service Error Messages

LOG0100: Unknown error.
LOG0101: OS error.
LOG0102: No such organization.
LOG0103: No such domain.
LOG0104: No such name.
LOG0105: Domain is remote.
LOG0106: Alias' name doesn't exist.
LOG0107: Domain is remote for alias' name.
LOG0108: No such domain or org for alias' name.
LOG0109: Alias points to an alias.
LOG0110: Directory bad.
LOG0111: Name index bad.
LOG0112: Property index bad.
LOG0116: Property not found.
LOG0117: Property not defined.
LOG0118: Not item property.
LOG0119: Not group property.
LOG0120: Invalid property.
LOG0121: Property already exists.
LOG0122: Property doesn't exist.

A

A-3

LOG0123: Value already exists.
LOG0124: Max properties.
LOG0125: No such property.
LOG0126: No space for property.
LOG0136: Name not found.
LOG0137: Incorrect password.
LOG0138: Inadequate capability.
LOG0139: Inappropriate credentials.
LOG0145: Invalid organization.
LOG0146: Invalid domain.
LOG0147: Invalid name.
LOG0148: Too busy.
LOG0149: Use courier.
LOG0150: Other error.
LOG0151: Reject.

LOG1300: Cancelled.
LOG1304: Cancelled.
LOG1306: A value is required.
LOG1307: Password too large.
LOG1308: Bad name.
LOG1312: Cache error.
LOG1313: Please login first.
LOG1314: No user logged in.
LOG1343: Enter Yes or No.
LOG1344: LGL not loaded.
LOG1345: LGL not loaded.
LOG1353: Error getting address.
LOG1357: Can't unlink device(s).
LOG1358: <device> is being accessed by an active process

A

General LAN Manager Errors

- NET2102: The Workstation driver NETWKSTA.SYS is not installed.
- NET2103: The Server cannot be located.
- NET2104: An internal error occurred. The network cannot access a shared memory segment.
- NET2105: A network resource shortage occurred.
- NET2106: This operation is not supported on Workstations.
- NET2107: The device is not connected.
- NET2109: This UNC sharename does not exist.
- NET2114: The Server has not been started.
- NET2115: Requested item does not exist.
- NET2116: The device or directory does not exist.
- NET2117: Redirected devices cannot be shared.
- NET2118: The name has already been shared.
- NET2119: The Server is currently out of the requested resource.
- NET2121: Requested add of item exceeds maximum allowed.
- NET2123: The API return buffer is too small.
- NET2127: A remote API error has occurred.
- NET2131: An error occurred when opening or reading LANMAN.INI.
- NET2134: An internal error occurred when calling the Workstation driver.
- NET2136: A generic network error has occurred.
- NET2138: The Workstation service has not been started.
- NET2139: The requested Server information is not available.
- NET2140: An internal LAN Manager error has occurred.
- NET2141: The Server is not configured for transactions.
- NET2142: The requested API is not supported on the remote Server.
- NET2143: The event name is poorly formed.
- NET2146: The program could not find the specified component in LANMAN.INI.
- NET2147: The program could not find the specified parameter in LANMAN.INI.
- NET2149: A line in LANMAN.INI is too long.
- NET2150: The printer queue does not exist.
- NET2151: The print job does not exist.
- NET2152: The printer destination cannot be found.
- NET2154: The printer queue already exists.

- NET2155: No more printer queues can be added.
- NET2156: No more print jobs can be added.
- NET2157: No more printer destinations can be added.
- NET2158: This printer destination is idle and cannot accept control operations.
- NET2159: This printer destination request contains an invalid control function.
- NET2160: The printer processor is not responding.
- NET2161: The Spooler service has not been started.
- NET2163: This operation cannot be performed on the printer queue in its current state.
- NET2164: This operation cannot be performed on the print job in its current state.
- NET2165: A Spooler memory allocation failure has occurred.
- NET2180: There is a timeout on the service table semaphore.
- NET2181: The service table is full.
- NET2182: The requested service has already been started.
- NET2183: There is a service entry semaphore timeout.
- NET2184: The service has not been started.
- NET2185: The service name is invalid.
- NET2186: The service is not responding to the control function.
- NET2187: The service control is busy.
- NET2188: LANMAN.INI contains an invalid service program name.
- NET2189: The service cannot be controlled in its present state.
- NET2190: The service would not respond to normal service control functions and was stopped with the DosKillProc function.
- NET2191: The requested pause or stop is not valid for this service.
- NET2200: This Workstation is already logged on.
- NET2201: This Workstation has not been logged on yet.
- NET2202: The username or groupname parameter is invalid.
- NET2203: The password parameter is invalid.
- NET2204: The logon processor did not add the message alias. (Warning message.)
- NET2205: The logon processor did not add the message alias. (Error message.)
- NET2206: The logoff processor did not delete the message alias. (Warning message.)
- NET2207: The logoff processor did not delete the message alias. (Error message.)
- NET2210: A centralized logon Server conflict has occurred.
- NET2211: The Server is configured without a valid user path.

A

- NET2212: An error occurred while loading or running the logon script.
- NET2213: The network is unable to use the resources provided for centralized logon.
- NET2214: The logon Server was not specified. Standalone logon will occur.
- NET2215: The logon Server cannot be found.
- NET2220: The groupname cannot be found.
- NET2221: The username cannot be found.
- NET2222: The resource name cannot be found.
- NET2223: The group already exists.
- NET2224: The user account already exists.
- NET2225: The resource permission list already exists.
- NET2227: The server is not running with user-level security.
- NET2228: There are too many names in the access control file.
- NET2229: A disk I/O failure has occurred.
- NET2230: There were too many lists specified.
- NET2232: The parent directory cannot be located.
- NET2234: This operation is not allowed on this special group.
- NET2236: The user already belongs to this group.
- NET2237: The user does not belong to this group.
- NET2250: The connection cannot be found.
- NET2251: This asg_type is invalid.
- NET2252: This device is already being shared.
- NET2270: A computername has not been configured.
- NET2271: This message Server has already been started.
- NET2272: The message Server initialization request has failed.
- NET2273: The message alias cannot be found on the local-area network.
- NET2274: This message alias has already been forwarded.
- NET2275: This message alias has been added but is still forwarded.
- NET2276: This message alias already exists locally.
- NET2277: The maximum number of added message aliases has been exceeded.
- NET2278: The computername cannot be deleted.
- NET2279: Messages cannot be forwarded back to the same Workstation.
- NET2280: The log file or device has not been specified.
- NET2281: The message has been sent but the reception is currently paused.
- NET2282: The message was sent but not received.
- NET2283: The message alias is currently in use. Try again later.
- NET2284: The Messenger service has not been started.

- NET2285: The name is not on the local computer.
NET2286: The forwarded message alias cannot be found on the network.
NET2287: The message alias table on the remote station is full.
NET2288: Messages for this alias are not currently forwarded.
NET2289: The broadcast message was truncated.
NET2291: The log name contains invalid characters.
NET2294: This is an invalid device.
NET2295: A write fault has occurred.
NET2297: A duplicate message alias exists on the local-area network.
NET2298: This message alias will be deleted later.
NET2310: This shared resource does not exist.
NET2311: This device is not shared.
NET2312: A session does not exist with that computername
NET2314: There isn't an open file with that ID number.
NET2315: A failure occurred when executing a remote administration command.
NET2316: A failure occurred when opening a remote temporary file.
NET2317: The data returned from a remote administration command has been truncated to 64K bytes.
NET2318: This device cannot be shared as both a spooled and a non-spooled device.
NET2319: The Server table was initialized incorrectly.
NET2331: The operation is invalid for this device.
NET2332: This device cannot be shared.
NET2333: This device was not open.
NET2334: This device name string is invalid.
NET2335: The queue priority is invalid.
NET2337: There are no shared communication devices.
NET2338: A queue doesn't exist for this request.
NET2340: This list of devices is invalid.
NET2341: The requested device is invalid.
NET2342: This device is already in use by the spooler.
NET2343: This device is already in use as a communications device.
NET2351: This computername is invalid.
NET2354: The string and prefix specified are too long.
NET2356: This path component is invalid.
NET2357: Cannot determine type of input.
NET2362: The buffer for types is not big enough.

A

- NET2370: Profile files cannot exceed 64K bytes.
- NET2371: The start offset is out of range.
- NET2372: The system cannot delete current connections to network resources.
- NET2373: The system was unable to parse the command line in this file.
- NET2374: An error occurred while loading the profile file.
- NET2377: This log file exceeds the maximum defined size.
- NET2380: The source path cannot be a directory.
- NET2381: The source path is illegal.
- NET2382: The destination path is illegal.
- NET2383: The source and destination paths are on different servers.
- NET2385: The Run Server you requested using the NET RUN command is paused.
- NET2389: An error occurred when communicating with a run Server.
- NET2391: An error occurred when starting a background process.
- NET2392: The shared resource you are connected to could not be found.
- NET2400: The LAN adapter number is invalid.
- NET2401: There are open files on the connection.
- NET2402: Active connections still exist.
- NET2403: This netname or password is invalid.
- NET2404: The device is being accessed by an active process.
- NET2405: The drive letter is in use locally.

Alerter Service Messages

- NET2430: The Alerter service has already been started.
NET2431: The Alerter service table is full.
NET2432: The Alerter service has not been started.
NET2433: The Alerter service recipient is invalid.

Net Service Messages

- NET3051: LANMAN.INI or the command line has an illegal value for <variable>.
NET3052: The required parameter <variable> was not provided on the command line or in LANMAN.INI.
NET3053: The unknown parameter <variable> was provided on the command line or in LANMAN.INI.
NET3054: A request for <variable> resources could not be satisfied.
NET3055: A problem exists with the system configuration: <variable>.
NET3056: A system error has occurred.
NET3057: An internal consistency error has occurred.
NET3058: LANMAN.INI or the command line has an ambiguous parameter <variable>.
NET3059: LANMAN.INI or the command line has a duplicate parameter <variable>.
NET3060: The service did not respond to control and was stopped with the DosKillProc function.
NET3061: An error occurred when loading the service.
NET3062: The sub-service <variable> failed to install.

A

Command Syntax Messages

- NET3500: Server is not configured for administration.
- NET3501: An invalid switch was used.
- NET3503: The command contains an invalid number of arguments.
- NET3505: A switch was used with an invalid argument.
- NET3506: The switch <variable> is unknown.
- NET3507: The switch <variable> is ambiguous.

DOS LAN Manager Application Error Messages

- NET3710: There was an error opening the help file.
- NET3711: The help file is empty.
- NET3712: There is an error in the help file syntax.
- NET3713: An error occurred while sending a message.
- NET3714: An error occurred while opening a temporary file.
- NET3715: An error occurred while writing a temporary file.
- NET3716: The device type is unknown.
- NET3717: The log file has been corrupted.
- NET3718: Program file names must end with .EXE.
- NET3719: A matching share could not be found so nothing was deleted.
- NET3720: The device type is unknown.
- NET3721: The password is invalid for <variable>.
- NET3722: An error occurred while sending a message to <variable>.
- NET3723: An error occurred while opening a temporary file.
- NET3724: An error occurred when writing a temporary file.
- NET3725: An error occurred when the share was deleted.
- NET3726: The username is invalid.
- NET3727: The password is invalid.
- NET3728: The passwords do not match.
- NET3729: The profile could not be loaded.
- NET3730: This computername is invalid.
- NET3731: The command was not found at the remote Server.
- NET3732: Default permissions cannot be set for that resource.
- NET3733: The NETRUN command looks for the program name on the runpath.
You cannot specify path characters when using NETRUN.

NET3734: A valid password was not entered.
NET3735: A valid name was not entered.
NET3736: The resource named cannot be shared.
NET3737: The permissions string contains invalid permissions.
NET3738: This operation is only valid on LPT and COM devices.
NET3739: <variable> already has rights for the resource.
NET3740: <variable> has no rights for the resource.
NET3741: <variable> is an invalid rights string.
NET3742: <variable> is an invalid username or groupname.
NET3744: A failure occurred while starting CMD.EXE.
NET3745: An error was encountered processing the file <variable>.
NET3746: <variable> is an invalid source file.
NET3747: <variable> is an invalid destination file.
NET3748: An error occurred while copying <variable>.
NET3749: An error occurred while deleting <variable>.
NET3750: An error occurred while moving <variable>.
NET3751: An error occurred while searching a directory.
NET3752: No users are logged on to this Server.
NET3753: User <variable> is not a member of group <variable>.
NET3754: User <variable> is already a member of group <variable>.
NET3755: There is no such user: <variable>.
NET3757: No valid response was provided.
NET3800: This command line option is invalid.
NET3801: This schedule update is invalid.
NET3802: This schedule date is invalid.
NET3803: The LANMAN root directory is unavailable.
NET3804: The SCHED.LOG cannot be cleared.
NET3805: Server shared memory cannot be accessed.
NET3806: The AT job ID does not exist.
NET3807: The schedule file is corrupted.
NET3808: The delete failed due to a problem with the schedule file.
NET3809: The command line cannot exceed 128 characters.
NET3810: The schedule file cannot be updated because the disk is full.
NET3811: The command line option is invalid.
NET3812: The AT schedule file is invalid. Clear it and create a new one.
NET3813: The AT schedule file was cleared.
NET3850: Usage: growacc new-number-of-users.

A

A-12

- NET3851: The new number of users argument is too big.
- NET3852: The new number of users must be numeric.
- NET3853: NET.ACC cannot be opened.
- NET3854: NET.ACC is not valid -- please reload from backup.
- NET3855: ACCESS.NET cannot be created.
- NET3856: Writing the signature to USERS.NET failed.
- NET3857: Writing to USERS.NET failed.
- NET3858: There are more active users in the old accounts file than in the new.
- NET3859: The accounts file was configured too small.
- NET3860: Re-encryption of password failed.
- NET3861: Writing to NET.ACC failed.
- NET3862: Reading from new accounts file failed.
- NET3863: The new NET.ACC is full.
- NET3864: Reading from NET.ACC failed.
- NET3865: Writing to NEWNET.ACC failed.
- NET3866: Renaming NET.ACC failed.
- NET3867: Renaming the old NET.ACC to BAK.ACC failed.
- NET3868: The update was destroyed. Please restore from backup.
- NET3869: Renaming NEW.ACC to NET.ACC failed.
- NET3870: <variable> is not a valid computername.

Index

- 3+Name service
 - error messages, A-2 to A-3
 - logging on to, 2-21
- 3+Open network
 - automatic logon, 2-6
 - ending session, 2-65
 - logging on to, 2-20
- 3+Open server
 - displaying shared resources, 2-93, 3-12
 - NET ACCESS command and, 2-48
 - remote command, 2-51

A

- abbreviations
 - for command option, 2-4
 - for commands, 2-3
 - for services, 2-3
- Alerter service error messages, A-9
- alias, 2-17, 2-68
 - adding, 2-72, 3-46
 - deleting, 2-72, 3-46
 - display all, 2-72
 - for messaging, 3-45
- application error messages, A-10 to A-12
- asterisk (*) option, 2-7
- AUTOEXEC.BAT file
 - LOGON command and, 2-16
 - NET START WORKSTATION command and, 2-92
- automatic logon, 2-5

B

Basic *See* MS-DOS LAN Manager Basic

Basic commands

 summarized, 2-11

bubble diagrams

 defined, 2-9

C

command option

 abbreviations for, 2-4

command syntax

 defined, 2-9

 error messages, A-10

commands

 abbreviations, 2-3

 asterisk (*) option with, 2-7

 Basic, summarized, 2-11

 displaying all, 2-26, 2-60

 Enhanced, summarized, 2-41

 LOGOFF, 2-12

 LOGON, 2-14

 NET, 2-43

 NET ACCESS, 2-45

 NET ADMIN, 2-51

 NET CONTINUE, 2-23

 NET COPY, 2-55

 NET HELP, 1-6, 2-25, 2-59

 NET LOAD, 2-62

 NET LOGOFF, 2-65

 NET LOGON, 2-67

 NET MOVE, 2-70

 NET NAME, 2-28, 2-72

 NET PASSWORD, 2-75

 NET PAUSE, 2-29

- commands (continued)
 - NET PRINT, 2-31
 - NET SAVE, 2-78
 - NET SEND, 2-5, 2-81
 - NET START MESSENGER, 2-84
 - NET START NETPOPUP, 2-86
 - NET START WORKSTATION, 2-35, 2-88
 - NET USE, 2-36
 - NET VIEW, 2-93
- Config menu, 3-49
 - Change password item, 3-58
 - Load profile item, 3-52
 - Logon item, 3-49
 - Save profile item, 3-55
- configuration
 - loading, 3-52
 - saving, 2-78, 3-55
- connection
 - adding new, 3-22
 - deleting, 2-36, 3-23
 - ending, 2-38
 - getting information about, 2-37

D

- default configuration file, 3-52
- device name
 - connect to shared resource, 3-26
 - redirecting, 2-36
 - showing local, 3-21
- dialog box
 - access path, 3-11
 - Accessing (Network Path), 3-27
 - Add an Alias, 3-47
 - Aliases for Messaging, 3-45
 - Change Logon Password at a Server, 3-58

- dialog box (continued)
 - elements defined, 3-9
 - Help, 3-7
 - how to reach, 3-10
 - Load Configuration, 3-52
 - Log Into Network, 3-5, 3-50
 - Network Resources in Use at Your Workstation, 3-21
 - Print Queues for (Server), 3-33
 - Printing Options for Job, 3-37
 - Printing Options for Queue, 3-39
 - Resources at (Server), 3-15
 - Save Configuration, 3-56
 - Send a Message, 3-42
 - Servers Available on Network, 3-13
 - Show Print Queues For, 3-31
 - Usage Information for a Network Resource, 3-29
 - Use a Network Resource, 3-24
 - Use the Resource (Network Path), 3-18

E

Enhanced *See* MS-DOS LAN Manager Enhanced

Enhanced commands

- summarized, 2-41

error messages

- 3+Name service, A-2 to A-3
- Alerter service, A-9
- application, A-10 to A-12
- command syntax, A-10
- defined, 1-8
- general LAN Manager, A-4 to A-8
- LOGOFF command, A-1
- LOGON command, A-1
- Net service, A-9

F

files

- copying, 2-56
- moving, 2-70

H

help

- with LAN Manager screen, 1-7, 3-7

L

LAN Manager error messages, A-4 to A-8

LAN Manager screen

- components of, 3-4
- display fields, 3-4
- menu bar, 3-4
- opening, 2-43, 3-3

local area network

- copying files over, 2-56
- displaying shared resources, 2-93
- ending session, 2-12, 2-65
- logging on, 1-3
- logging on example, 1-4
- saving current configuration, 2-78
- servers available on, 3-13
- viewing resources on, 3-12

logging on

- automatically, 2-5
- from Config menu, 3-49
- options, 2-15
- to 3+Name service, 2-21
- to 3+Open network, 2-20, 2-67
- to mixed networks, 2-18, 2-22

LOGOFF command, 2-12

- error messages, A-1

LOGON command, 2-14
error messages, A-1
password, 2-17

M

menu

- Config, 3-49
- Message, 3-41
- names summarized, 3-11
- View, 3-12

menus and menu items
selecting, 3-6

Message menu, 3-41

- Aliases item, 3-45
- Send item, 3-41

messages

- error, A-1 to A-12
- sending, 2-82, 3-42, 3-44

Messenger service, 1-3, 2-84
starting automatically, 2-5, 2-84

mixed network

- defined, 2-18

moving files, 2-70

MS-DOS LAN Manager

- defined, 1-1

MS-DOS LAN Manager Basic

- commands, about, 1-5
- commands summarized, 2-11
- defined, 1-2
- starting, 1-3

MS-DOS LAN Manager Enhanced
 automatic logon, 2-5
 commands summarized, 2-41
 defined, 1-2
 logging on to, 3-51
 screen, 1-5
 starting, 1-3
 See also LAN Manager screen

N

NET ACCESS command, 2-45
NET ADMIN command, 2-51
NET command, 2-43
NET CONTINUE command, 2-23
NET COPY command, 2-55
NET HELP command, 1-6, 1-7, 2-25, 2-59
NET LOAD command, 2-62
NET LOGOFF command, 2-65
NET LOGON command, 2-67
 logon security, 2-68
NET MOVE command, 2-70
NET NAME command, 2-28, 2-72
NET PASSWORD command, 2-75
NET PAUSE command, 2-29
NET PRINT command, 2-31
NET SAVE command, 2-78
NET SEND command, 2-5, 2-81
Net service error messages, A-9
NET START MESSENGER command, 2-84
NET START NETPOPUP command, 2-86
NET START WORKSTATION command, 2-35, 2-88
NET USE command, 2-36
NET VIEW command, 2-93
NETLOGON.PRO file, 3-52
Netpopup service, 1-3, 2-86
 and Workstation service, 2-86

- netstation
 - names, 2-73
 - setting options, 2-88
- network path
 - accessing, 3-27
- network resource
 - connecting to, 3-26
 - dialog box, 3-24
 - displaying, 2-93
 - getting more information, 3-23
 - reinstating, 2-24
- network resources
 - stop using, 3-17
 - using, 3-17
- no option, 2-8

P

- password
 - assigning, 1-3
 - changing, 2-21, 2-75, 3-58, 3-60
 - for MS OS/2 LAN Manager, 3-28
 - security, 2-7
 - typing, 2-6
 - using with commands, 2-6
- pathname
 - display all, 2-47
- permissions
 - changing, 2-45
 - displaying, 2-47
 - types of, 2-49
- print job
 - changing status, 3-34
 - options, 3-37
 - status, 3-33

- printer queue
 - displaying information, 2-32
 - listing all shared by server, 3-32
 - listing information, 3-36
 - options, 3-39
 - status, 3-33
- profile
 - loading, 3-52, 3-54
- profile file
 - defined, 2-63
 - loading, 2-63
 - saving current configuration, 3-57
 - storing, 2-79
- PROFILE.SYS file, 2-19

R

- remote connections
 - LOGON command and, 2-18
- resources
 - connecting to network, 3-26
 - listing a server's, 3-14
 - using or stopping, 3-15

S

- server
 - displaying resources, 3-15
 - displaying shared resources, 2-47
 - listing information, 3-14
 - printer queues, 3-30
- service names
 - abbreviations and synonyms, 2-3
- services
 - reinstating, 2-24
 - starting automatically, 2-4
 - suspending, 2-29

shared resource
 add a connection, 3-22
 connecting a local device, 3-26
 connecting to, 3-19
 delete a connection, 3-23
 logging off, 2-13
 show local device names, 3-21
 use resource dialog box, 3-18

T

three-part name, 2-17

U

user name
 default, 2-68
 displaying, 2-28
 logging on, 2-17

V

View menu, 3-12
 Network servers item, 3-12
 Print queues item, 3-30
 This workstation item, 3-20

W

wildcard character (* or ?), 3-43, 3-44
Workstation service, 1-3
 setting options, 2-90
 show shared resources, 3-20
 starting, 2-35, 2-88
 starting automatically, 2-4

Y

- yes option, 2-8
 - with LOGOFF command, 2-12

Z

- Zoom button
 - displaying resources with, 3-14
 - information about a queue, 3-31
 - information about local device, 3-23
 - reaching dialog box with, 3-10

Reader Comment Form

3Com Corporation

Please take the time to complete this form. Your suggestions and comments will help us to improve our future publications. Thank you.

Publication: 3+Open MS-DOS LAN Manager
User Reference

Part #: 5148-00

Please rate the product's documentation in each of the following areas:

	Excellent	Good	Fair	Poor
Technical Accuracy				
Does the documentation reflect the product's functionality?	<input type="checkbox"/>	<input type="checkbox"/>	<input type="checkbox"/>	<input type="checkbox"/>
Reliability				
Is the publication easy to read and understand?	<input type="checkbox"/>	<input type="checkbox"/>	<input type="checkbox"/>	<input type="checkbox"/>
Clarity				
Are the procedures easy to follow?	<input type="checkbox"/>	<input type="checkbox"/>	<input type="checkbox"/>	<input type="checkbox"/>
Examples				
Are they helpful? Are there enough of them?	<input type="checkbox"/>	<input type="checkbox"/>	<input type="checkbox"/>	<input type="checkbox"/>
Organization				
Is it easy to locate information?	<input type="checkbox"/>	<input type="checkbox"/>	<input type="checkbox"/>	<input type="checkbox"/>
Graphics				
Are they clear and useful?	<input type="checkbox"/>	<input type="checkbox"/>	<input type="checkbox"/>	<input type="checkbox"/>

How did you use this publication?

- Installation manual
- Introduction to the subject
- Self-study
- Operating instructions
- Reference
- Training aid
- Other _____

How did you receive this publication?

- With Equipment/Software
- Company Representative
- Another User
- Other _____

After reading this publication were you able to use the product? Yes ___ No ___

If you noticed errors, please list page number(s). _____

Any comments or suggestions? _____

Name _____ Title _____

Company _____

Address _____

City _____ State/Zip _____

Phone (____) _____

All information becomes the property of 3Com Corporation

CUT HERE





No Postage
Necessary
if mailed
in the
United States

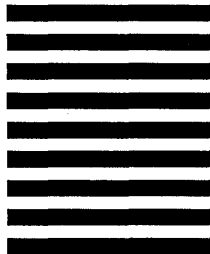
BUSINESS REPLY MAIL

FIRST CLASS PERMIT NO. 1883 SANTA CLARA, CA

POSTAGE WILL BE PAID BY ADDRESSEE

3Com Corporation
3165 Kifer Road
Santa Clara, CA 95052-8145 USA

Attn: SPD Publications Department



please fold here

PLEASE TAPE. POSTAL REGULATIONS PROHIBIT
USE OF STAPLES.

CUT HERE





3Com Corporation
3165 Kifer Road
Santa Clara, CA 95052-8145