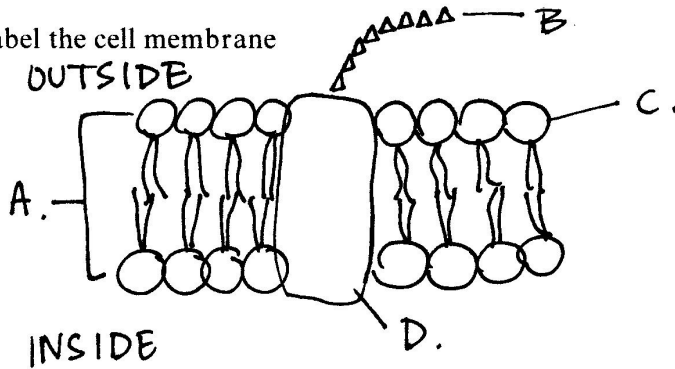


Biology Chapter 7: Diffusion Pre-lab

Answer the following questions. Answers that cannot be read will be counted as incorrect. Come prepared to complete the lab on Tues Sept 30, 2008.

1. Label the cell membrane

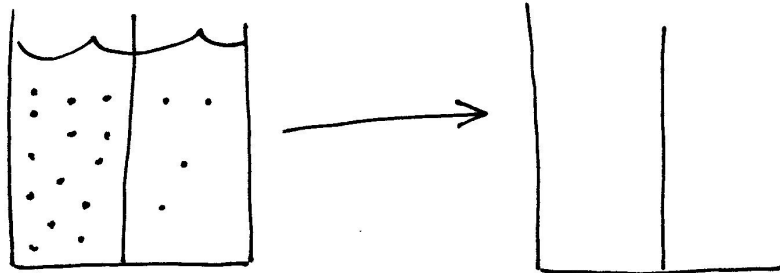


2. A cell membrane is _____ which means that it allows some materials easily into the cell, but not others.

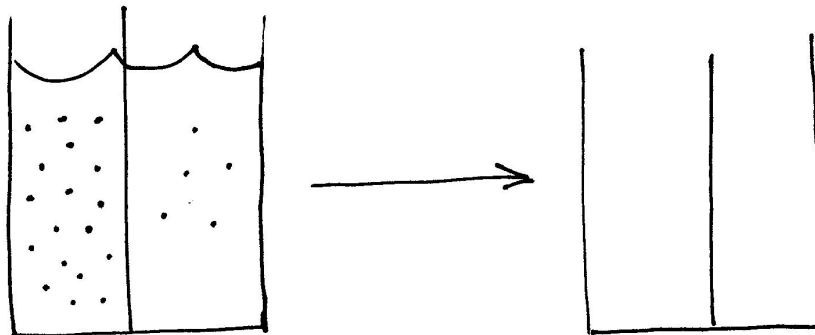
3. What is the difference between diffusion and osmosis?

4. Draw the solution at equilibrium.

A. Particles can move across the membrane



B. Particles cannot move across the membrane; water can move



5. Label the hypertonic, isotonic and hypotonic solutions. Show the direction of the water flow.

