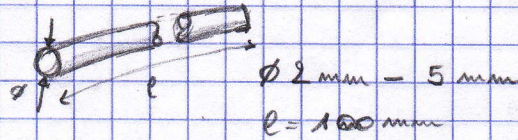


Axels



full



hollow



full with schuifzand

↳ problem: slightly bigger than the given ϕ

⇒ Materials:

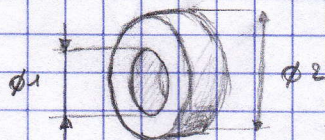
* steel	H	
* Aluminium	L	→ hollow →
* inox	H	
* messing	H	
* plastic	L	
(carbon & others)		

weight

less bendable

than steel

Kogellager



$\phi_1 = 2 - 6\text{ mm} \Rightarrow$ most common: 5 mm

$\phi_2 =$ depends on ϕ_1

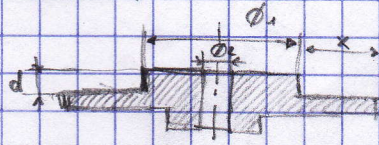
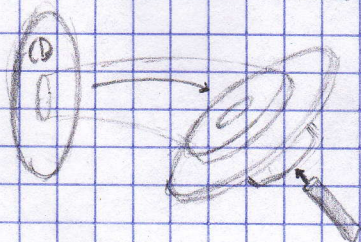
ex: 5 mm → 9, 10, 11, 13

↳ most common (2,75 €)

→ no differences in rotation between the different types!

Attach wheels (suggestion)

Make with solid works:



$\phi_1 =$ diameter CD-hole

$\phi_2 =$ diameter axel

$x = 10\text{ mm}$ (sugg.)

$d =$ thickness of CD + extra

⇒ use glue to stick the CD on the pannel and the axel on this.

- ⊕ it's the exact middle of the CD
- the CD will 'not' wobble, because of the pannel

Gears: same thing

