

HISTOIRE NATURELLE

DES

INSECTES

HÉMIPTÈRES

PAR

MM. C.-J.-B. AMYOT ET AUDINET-SERVILLE

MEMBRES DE LA SOCIÉTÉ ENTOMOLOGIQUE

DE FRANCE, ETC.

ATLAS

PARIS

A LA LIBRAIRIE ENCYCLOPÉDIQUE DE RORET,  
RUE HAUTEFEUILLE, 12.

HISTOIRE NATURELLE

DES

# INSECTES

## AVIS DE L'ÉDITEUR.

Pl. V, fig. 5 a : les segments ventraux sont mal indiqués, et les plaques valvaires non représentées.

Pl. VI, fig. 2 c : mal représentée.

La mort des auteurs nous a empêché jusqu'ici de remédier aux défauts que nous indiquons à nos souscripteurs.

MEMBRES DE LA SOCIÉTÉ ENTOMOLOGIQUE  
DE FRANCE, ETC.

ATLAS

PARIS

A LA LIBRAIRIE ENCYCLOPÉDIQUE DE ROBERT  
RUE HAUTEFEUILLE, 15.

EXPLICATION DES PLANCHES

DES

INSECTES HÉMIPTÈRES.

PLANCHE 1<sup>re</sup>.

- Figure 1. *Stiretrus violaceus*. Say. —
- 1 a. *id.* Base du ventre et pointe ventrale. —
- 1 b. *id.* Antenne. —
- 1 c. *id.* Jambe antérieure. —
- 2. *Stiretrosoma erythrocephala*. Le P. et Serv. —
- 2 a. *id.* Jambe antérieure. —
- 3. *Discocera ochrocyanea*. Le P. et Serv. —
- 3 a. *id.* Antenne. —
- 4. *Eucorysses pallens*\*. —
- 4 a. *id.* Antenne. —
- 5. *Scutellera Banksii*. Donovan. —
- 6. *Tetyra pagana*. Fabr. —
- 7. *Hotea triangulum*\*. —
- 8. *Augocoris Gomezii*. Burm. —
- 8 a. *id.* Antenne. —

PLANCHE 2.

- Figure 1. *Ancyrosoma albolineatum*. Fabr. —
- 2. *Agonosoma flavolineatum*. Lap. —
- 3. *Odontotarsus caudatus*. Kl. —
- 3 a. *id.* Tarse. —
- 4. *Coptosoma cribrarium*. Fabr. —
- 5. *Galgupha notata*\*. —
- 5 a. *id.* Jambe. —
- 6. *Prolobodes giganteus*. Burm. —
- 7. *Edessa antilope*. Fabr. —
- 7 a. *id.* Sternum et carène sternale. —
- 8. *Macrina furcata*. Fabr. —
- 8 a. *id.* Tête vue en dessus. —

## PLANCHE 3.

Figure 1. *Corysorrhaphis leucocephalus*. Spin.

1 a. id. Ventre et pointe ventrale.

— 2. *Rhynchocoris serratus*. Donov.

2 a. id. Carène sternale vue de côté.

— 3. *Loxa virescens*\*.

3 a. id. Ventre de la femelle.

3 b. id. Ventre du mâle.

— 4. *Pentatoma perspicua*. Fabr.

— 5. *Pentatoma tessellata*\*.

— 6. *Diplorhinus furcatus*. Fabr.

— 7. *Prooxys dekrator*. Fabr.

7 a. id. Tête vue en dessus.

— 8. *Cazira verrucosa*. Westw.

— 9. *Platynopus varius*\*.

9 a. id. Jambe antérieure.

— 10. *Megymenum cupreum*. Guér.

10 a. id. Antenne.

## PLANCHE 4.

Figure 1. *Atractus cinereus*. Lap.

— 2. *Chariesterus gracilis*. Lap.

— 3. *Prismatocerus auritulus*\*.

— 4. *Chærommatus farinosus*\*.

— 5. *Camptischium spinosum*\*.

5 a. id. Ventre et cuisses postérieures.

— 6. *Discogaster rhomboideus*. Kl.

6 a. id. Bec et sternum.

— 7. *Dalader acuticosta*\*.

— 8. *Copius rubescens*\*.

— 9. *Sundarus nenator*\*.

— 10. *Mictis dentipes*\*.

## PLANCHE 5.

Figure 1. *Merocoris tristis*. Pert.

1 a. id. Tête et pointe de l'écusson vues de côté.

— 2. *Hypselonotus subterpunctatus*\*.

Figure 3. *Hyalymenus dentatus*. Fabr.

- 4. *Micrellytra fossularum*. Fabr.
- 5. *Meropachys nigricans*. Lap.
  - 5 a. *id.* Abdomen de la femelle, vu en dessous.
  - 5 b. *id.* Jambe postérieure.
- 6. *Archimerus armatus*. Lap.
  - 6 a. *id.* Jambe postérieure.
- 7. *Phlœa corticata*. Drur.
  - 7 a. *id.* Dessous du corps.
  - 7 b. *id.* Ecusson.
  - 7 c. *id.* Antenne.
- 8. *Phlœa paradoxa*. Hahn.
  - 8 a. *id.* Ecusson.
- 9. *Ophthalmicus figuratus*\*.
  - 9 a. *id.* Antenne.
- 10. *Polyachantus echii*. Fabr.

## PLANCHE 6.

Figure 4. *Globiceps capito*. Le P. et Serv.

- 1 a. *id.* Tête et prothorax.
- 2. *Macrocephalus crassimanus*. Fabr.
  - 2 a. *id.* Tête et prothorax vus en dessous.
  - 2 b. *id.* Antenne.
  - 2 c. *id.* Patte antérieure.
- 3. *Eurycera nigricornis*. Lap.
  - 3 a. *id.* Antenne.
- 4. *Maotys fuscus*. Gray.
- 5. *Pristhevarma bipunctata*\*.
  - 5 a. *id.* Tête; situation des ocelles\*.
- 6. *Salyavata variegata*\*.
  - 6 a. *id.* Tête; saillie des tubercules antennifères.
- 7. *Spiniger eburneus*. Le P. et Serv.
  - 7 a. *id.* Tête et épines du prothorax.
- 8. *Plœogaster M album*\*.
  - 8 a. *id.* Tête.
- 9. *Yolemus sufflatus*\*.
  - 9 a. *id.* Tête.
- 10. *Eulyes amœna*. Guér.
  - 10 a. *id.* Tête.

## PLANCHE 7.

- Figure 1. *Saccoderes inflata*. Pert.  
 1 a. *id.* Prothorax vu de côté.  
 — 2. *Saccoderes vesiculosa*. Pert.  
 2 a. *id.* Jambe postérieure.  
 — 3. *Opinus rufus*. Lap.  
 3 a. *id.* Patte antérieure.  
 3 b. *id.* Patte antérieure; la fossette spongieuse marquée vers l'extrémité de la jambe.  
 — 4. *Atrachelus heterogeneus*\*.  
 4 a. *id.* Antenne du mâle.  
 — 5. *Pirates bimaculatus*. Serv.  
 — 6. *Cimbus productus*. Hahn.  
 6 a. *id.* Tête vue en dessus.  
 — 7. *Ectrichodia rubra*\*.  
 7 a. *id.* Tête et bec vus de côté.  
 — 8. *Stenopoda cinerea*. Lap.  
 8 a. *id.* Tête vue en dessous.  
 — 9. *Sastrapada subspinosa*\*.  
 9 a. *id.* Patte antérieure.  
 — 10. *Canthesancus trimaculatus*\*.  
 10 a. *id.* Pointe de l'écusson vue de côté.  
 10 b. *id.* Tête vue en dessous.

## PLANCHE 8.

- Figure 1. *Sphaeridops amoenus*. Le P. et Serv.  
 1 a. *id.* Tête vue en dessous et présternum.  
 — 2. *Conorhinus rubrofasciatus*. De Géer.  
 2 a. *id.* Tête et bec vus de côté.  
 — 3. *Ptilomera laticaudata*. Hardw.  
 3 a. *id.* Abdomen de la femelle.  
 3 b. *id.* Abdomen du mâle, vu en dessous.  
 — 4. *Mononyx raptorius*. Fabr.  
 4 a. *id.* Patte antérieure.  
 — 5. *Naucoris Poeyi*. Guér.  
 — 6. *Corisa coleoptrata*. Fabr.  
 — 7. *Notonecta mexicana*\*.  
 — 8. *Anisops niveus*. Fabr.

PLANCHE 9.

- Figure 1. *Aphana variegata*. Guér. —  
 — 2. *Membracis cucullata*\*. —  
 2 a. *id.* Antenne et ocelle.  
 2 b. *id.* Tête vue en dessous.  
 — 3. *Enchophyllum cruentatum*. Germ. —  
 — 4. *Mogannia illustrata*\*. —  
 — 5. *Hypsauchenia balista*. Germ. —  
 — 6. *Heteronotus flavolineatus*. Lap. —  
 — 7. *Pochazia fasciata*. Fabr. —  
 — 8. *Cyphonia trifida*. Fabr. —  
 8 a. *id.* Prothorax vu en dessus, avec son prolongement  
 furcifonne. —  
 — 9. *Polyglypta flavomaculata*\*. —

PLANCHE 10.

- Figure 1. *Physoplia crassicornis*\*. —  
 — 2. *Umbonia spinosa*. Fabr. —  
 — 3. *Ceresa postfasciata*\*. —  
 — 4. *Eurymela rubrovittata*\*. —  
 — 5. *Eurymela erythrocnemis*. Burm. —  
 5 a. *id.* Tête vue de front. —  
 — 6. *Cercopis octopunctata*\*. —  
 — 7. *Sphenorkina lineolata*\*. —  
 — 8. *Orthorhaphia cassidioides*. Westw. —  
 — 9. *Ptyelus trivirgatus*\*. —  
 — 10. *Lepyronia obscurata*\*. —  
 — 11. *Tettigonia farinaria*\*. —

PLANCHE 11.

- Figure 1. *Ciccus pervirgatus*\*. —  
 — 2. *Zinneca flavidorsum*\*. —  
 — 3. *Scaris ferruginea*. Fabr.  
 3 a. *id.* Jambe et tarse postérieurs. —  
 — 4. *Gypona glauca*. Fabr. —  
 — 5. *Ledra perdita*\*. —  
 — 6. *Aglæna ornata*. Fried. —  
 — 7. *Darnis bifasciatus*\*. —

Figure 8. *Rhaphirhinus fasciatus*. Fabr.

8 a. id. Tête vue de côté.

— 9. *Aulacizes quadripunctata*. Germ.

— 10. *Tettigonia trifasciata*\*.

PLANCHE 12.

Figure 1. *Menipha brunnea*\*.

1 a. id. Tête vue en dessus.

— 2. *Oxyrhinus subsulcatus*\*.

2 a. id. Partie antérieure de la tête.

— 3. *Tarisa flavescens*\*.

— 4. *Cethera variata*\*.

4 a. id. Partie antérieure de la tête.

— 5. *Golema rubromaculata*\*.

— 6. *Œdancala dorsilinea*\*.

— 7. *Sephela linearis*\*.

— 8. *Phalænomorpha incubans*\*.

8 a. id. L'espèce vue de côté.

— 9. *Uroxiphus maculiscutum*\*.

— 10. *Lycoderes fuscus*\*.

10 a. id. Tête et prothorax vus de front.

— 11. *Nessorhinus vulpes*\*.

11 a. id. L'espèce vue en dessus.

— 12. *Raphidosoma Burmeisteri*\*.

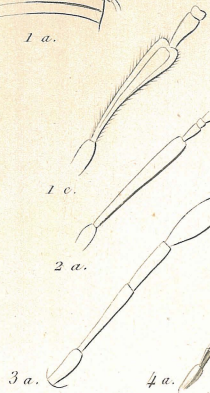
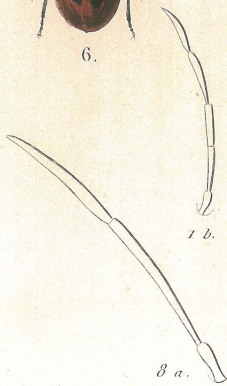
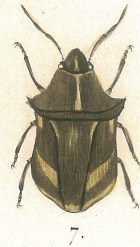
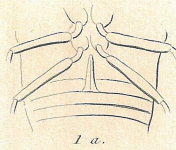
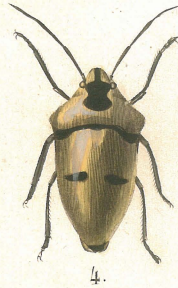
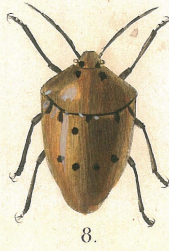
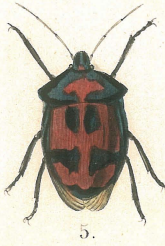
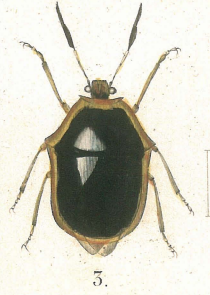
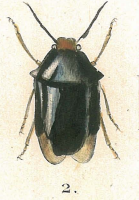
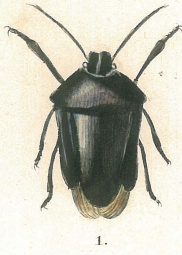
— 13. *Rachava orbicularis*\*.

— 14. *Tettigades chilensis*\*.

— 15. *Cidoria flava*\*.

15 a. id. Crochets d'un tarse.



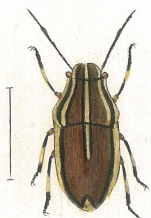


- |   |   |
|---|---|
| 1. <i>Stiretrus violaceus</i> Say. .... Page 76.        | 5. <i>Scutellera Banksii</i> Donov. .... Page 28. |
| 2. <i>Stiretrosoma erythrocephala</i> LeP. et Serv. 76. | 6. <i>Tetyra pagana</i> Fabr. .... 47.            |
| 3. <i>Discocera ochrocyanea</i> LeP. et Serv. .... 77.  | 7. <i>Hotea triangulum</i> *. .... 41.            |
| 4. <i>Lucorysses pallens</i> *. .... 31.                | 8. <i>Augocoris Gomezi</i> Burm. .... 37.         |

HÉMIPTÈRES.



1.



2.



5.



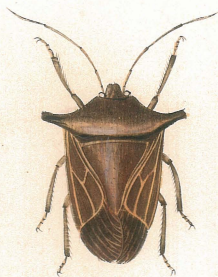
4.



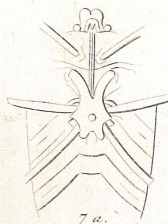
6.



3.



7.



7 a.



8.



3 a.



8 a.

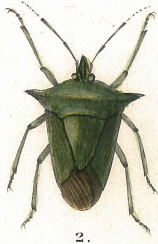


5 a.

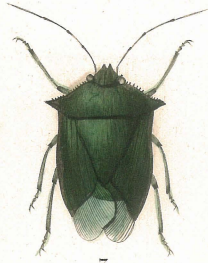
- |  |   |
|--|---|
| 1. <i>Ancyrosoma albolineatum</i> Fabr. Page 49. | 5. <i>Galgypa notata</i> * Page 68.           |
| 2. <i>Agonosoma flavolineatum</i> Lap. .... 44.  | 6. <i>Prolobodes giganteus</i> Burm. .... 66. |
| 3. <i>Odontolarysus caudatus</i> Kl. .... 43.    | 7. <i>Edessa antilope</i> Fabr. .... 158.     |
| 4. <i>Loptosoma cribrarium</i> Fabr. .... 66.    | 8. <i>Macrina furcata</i> Fabr. .... 179.     |



1.



2.



5.



4.



5.



6.



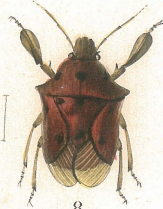
7.



1 a.



2 a.



8.



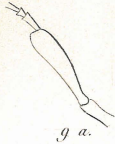
3 a.



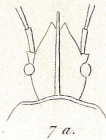
3 b.



9.



9 a.



7 a.



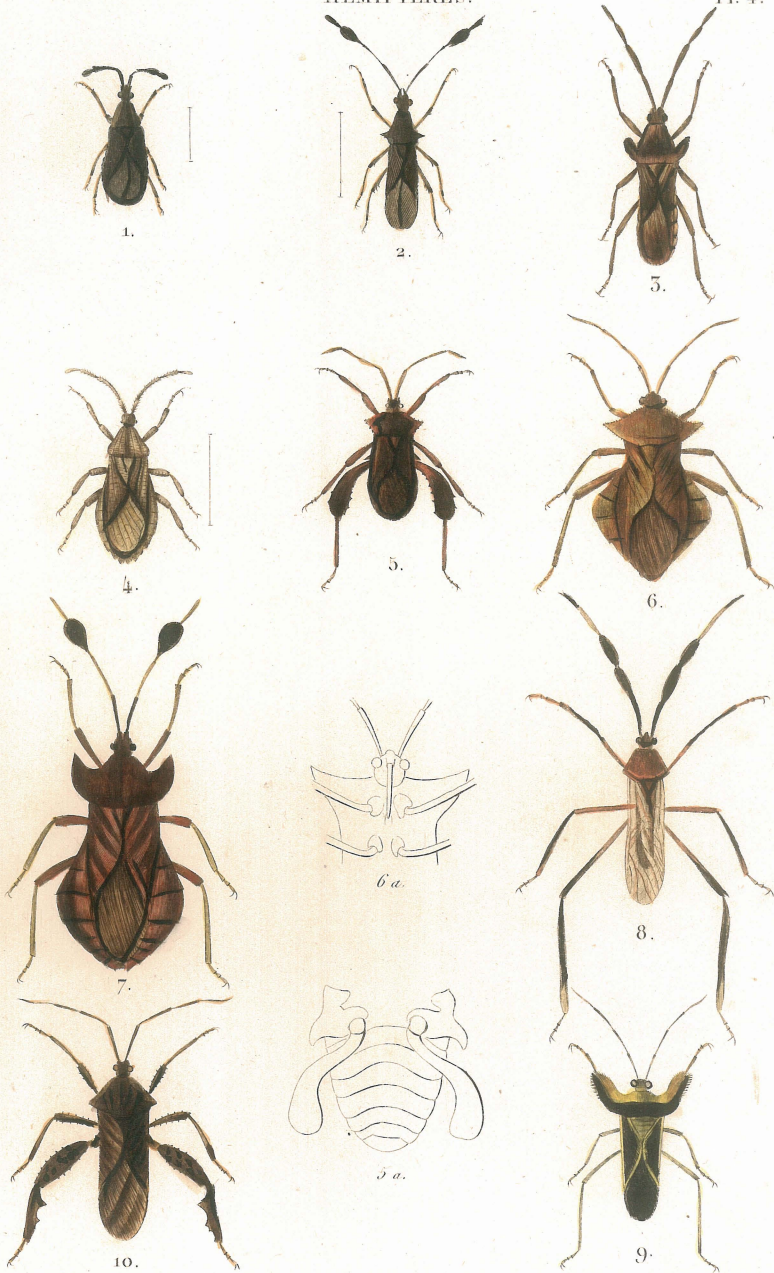
10 a.



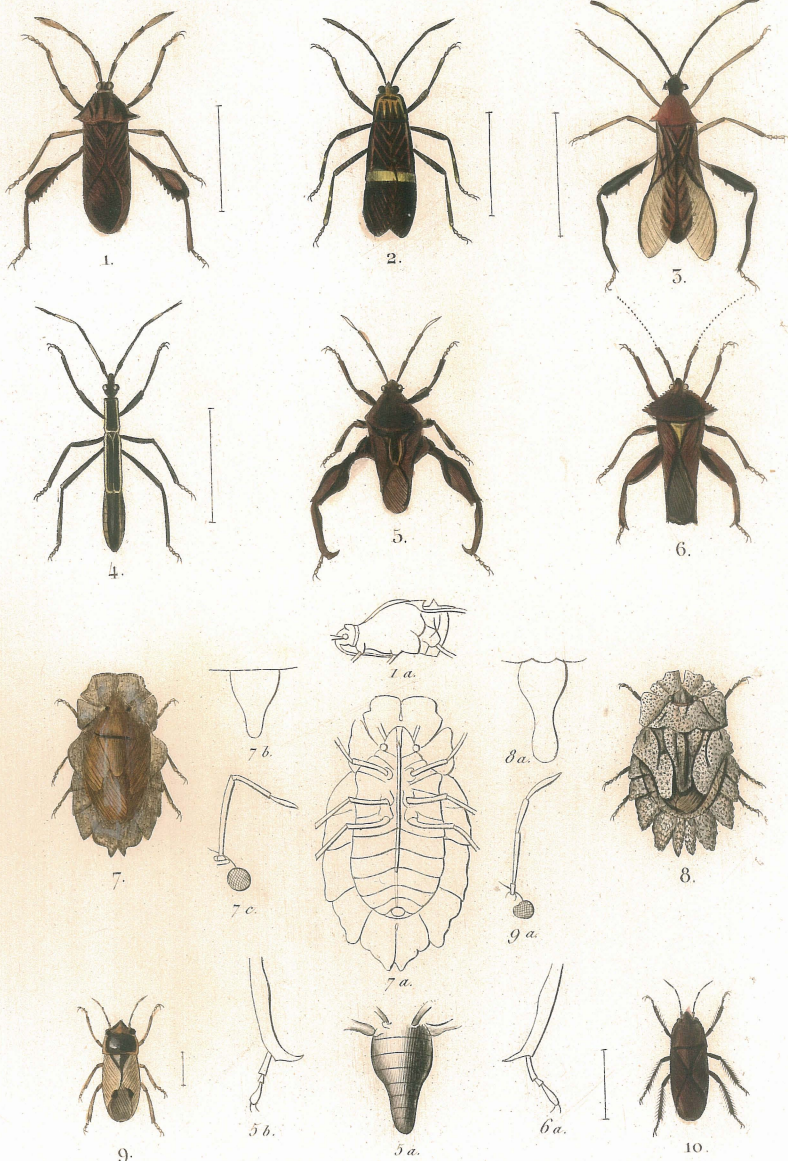
10.

- 1. *Coryssorhaphis leucocephala* Spin. Page 80.
- 2. *Rhynchoris serratus* Donov. .... 152.
- 3. *Loxa virescens*\* ..... 137.
- 4. *Pentatoma perspicua* Fabr. .... 130.
- 5. ——— *tesselata*\* ..... 130.

- 6. *Diplochirus fuscatus* Fabr. .... Page 178.
- 7. *Prooxys delirator* Fabr. .... 140.
- 8. *Cacira verrucosa* Westw. .... 78.
- 9. *Platynopus varius*\* ..... 79.
- 10. *Megymenum capreum* Guér. .... 182.



- |   |           |   |
|---|-----------|---|
| 1. <i>Atractodes cinereus</i> Lap. ....   | Page 210. | 6. <i>Discogaster rhomboideus</i> Kl. Page 192. |
| 2. <i>Chaptasterus gracilis</i> Lap. .... | 211.      | 7. <i>Dalader acaticosta</i> * .....            |
| 3. <i>Prismalocerus auritalus</i> * ..... | 185.      | 8. <i>Copius rubescens</i> * .....              |
| 4. <i>Charonmatus farinosus</i> * .....   | 204.      | 9. <i>Sundarus nentator</i> * .....             |
| 5. <i>Camptischium spinosum</i> * .....   | 213.      | 10. <i>Mictis dentipes</i> * .....              |



- |  |  |
|--|--|
| 1. <i>Merocoris tristis</i> Pert. .... Page 244.   | 6. <i>Archimerus armatus</i> Lap. .... Page 198. |
| 2. <i>Hypselonotus subterpunctatus</i> * .... 242. | 7. <i>Phlox corticala</i> Drur. .... 117.        |
| 5. <i>Nyatymenus dentatus</i> Fabr. .... 224.      | 8. ——— <i>paradoxa</i> Hahn. .... 118.           |
| 4. <i>Microlytra fossularum</i> Fabr. .... 231.    | 9. <i>Ophthalmicus figuratus</i> * .... 261.     |
| 5. <i>Meropachys nigricans</i> Lap. .... 199.      | 10. <i>Polyacanthus echi</i> Fabr. .... 252.     |



1.



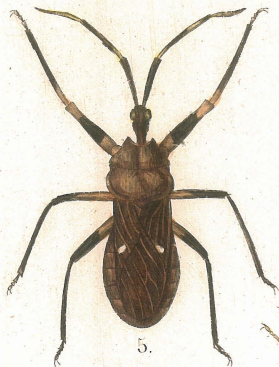
2.



5.



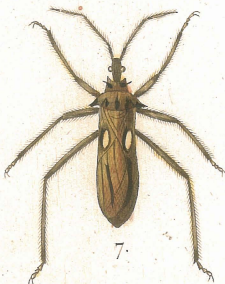
4.



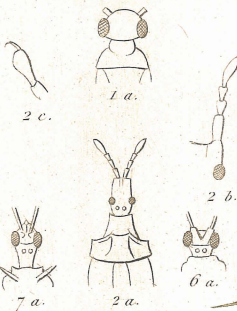
5.



6.



7.



1 a.

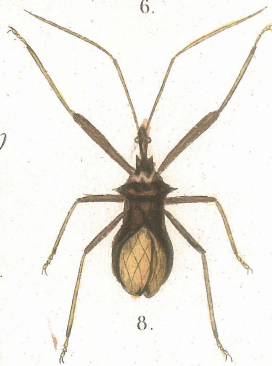
2 c.

2 b.

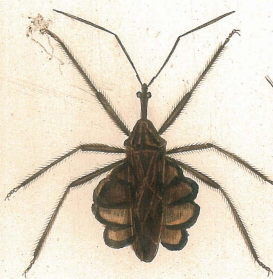
7 a.

2 a.

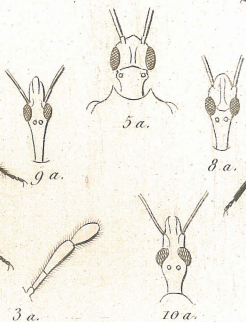
6 a.



8.



9.

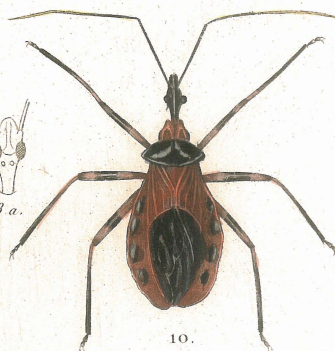


9 a.

5 a.

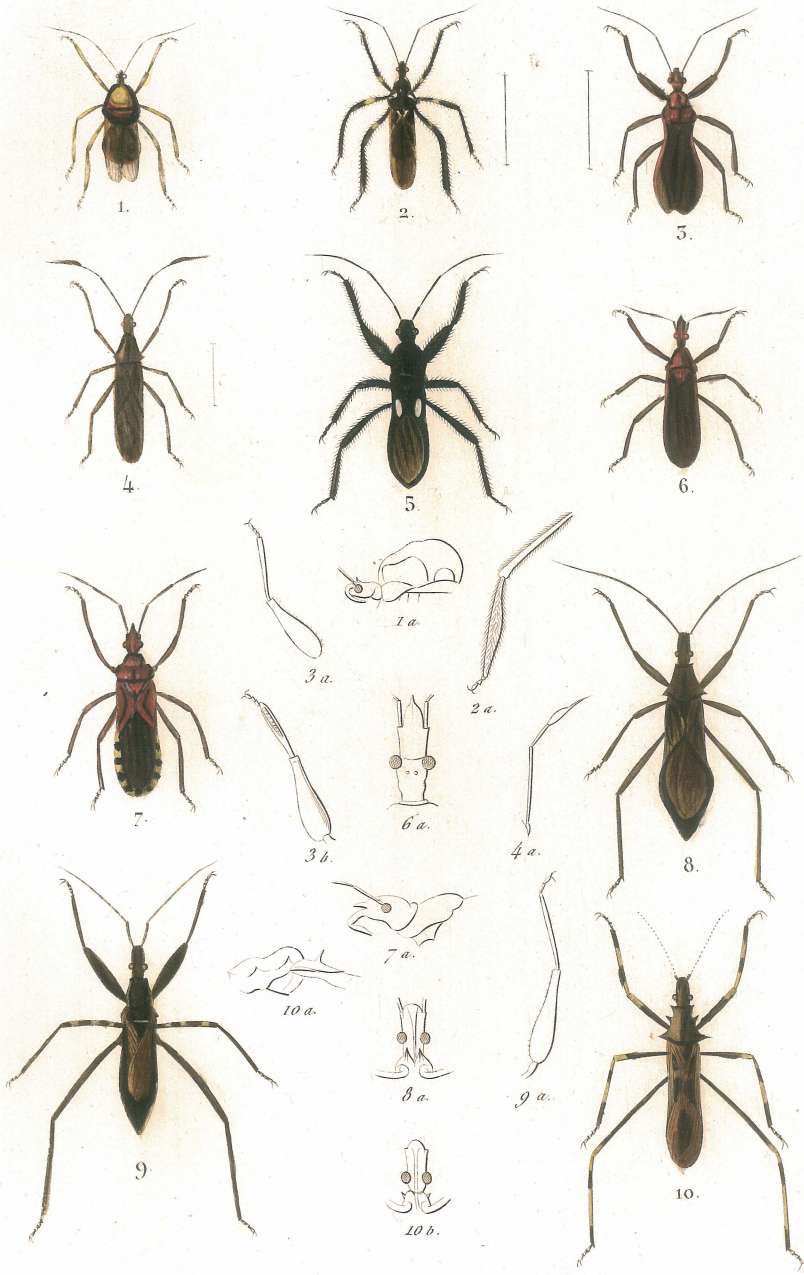
8 a.

10 a.



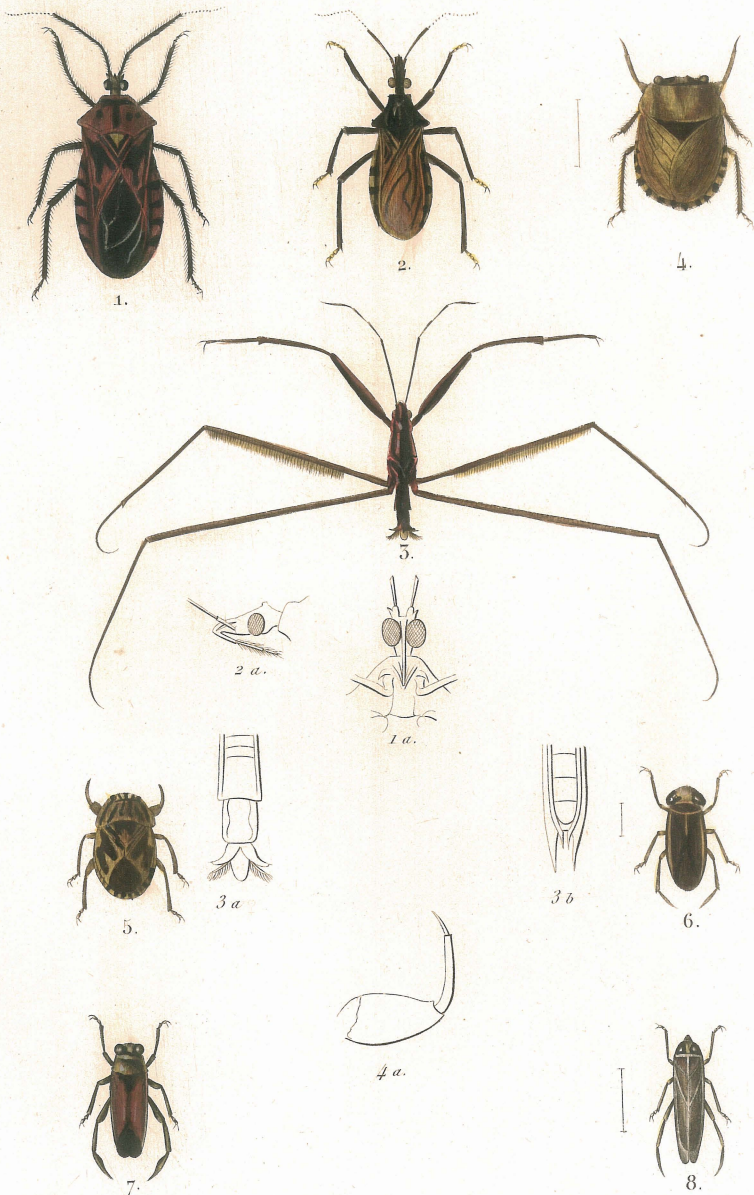
10.

- |   |   |
|---|---|
| 1. <i>Globiceps capito</i> Le P. et Serv. Page 282. | 6. <i>Salyavata variegata</i> * Page 350.       |
| 2. <i>Macrocephalus crassimanus</i> Fabr. 292.      | 7. <i>Spiniger eburneus</i> Le P. et Serv. 335. |
| 3. <i>Eurycera nigricornis</i> Lap. 296.            | 8. <i>Ploegaster M album</i> * 364.             |
| 4. <i>Maotys fuscus</i> Gray. 319.                  | 9. <i>Volinus sufflatus</i> * 338.              |
| 5. <i>Pristhevarma bipunctata</i> * 335.            | 10. <i>Eulyes amena</i> Guér. 359.              |



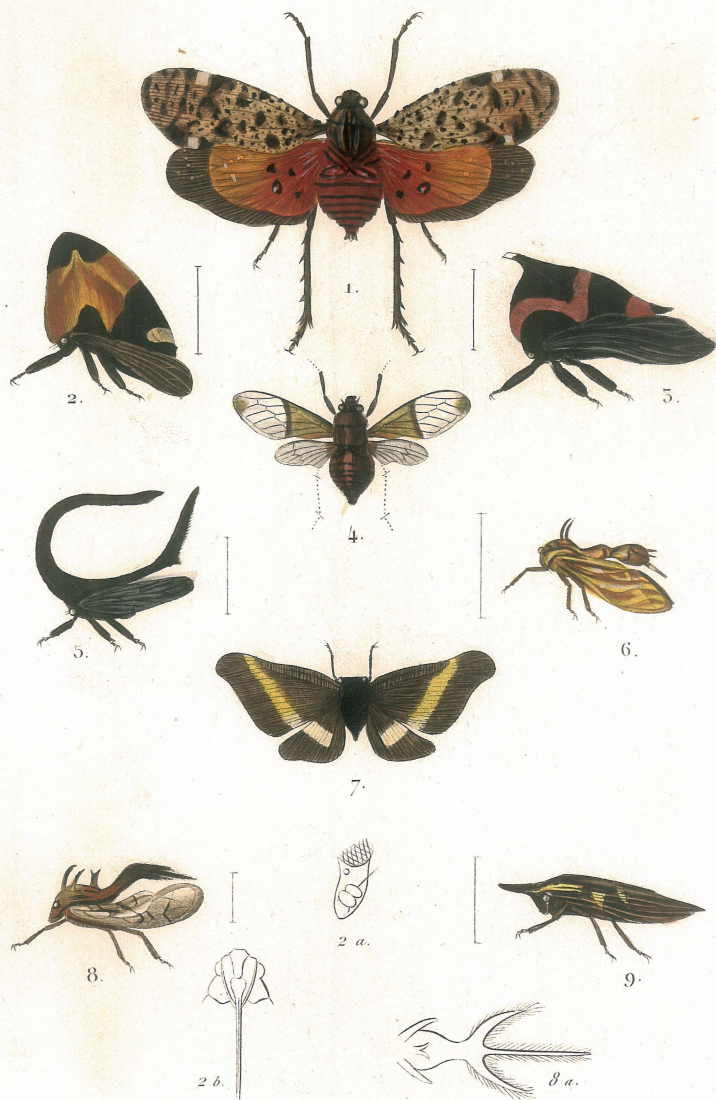
1. *Saccoderes inflata* Pert. .... Page 380.  
 2. ——— *vesiculosa* Pert. .... 381.  
 5. *Opinus rufus* Lap. .... 340.  
 4. *Atrachelus heterogeneus* \* ..... 374.  
 5. *Pirates bimaculatus* Serv. .... 324.

6. *Cimbus productus* Hahn. .... Page 385.  
 7. *Ectrichodia rubra* \* ..... 344.  
 8. *Stenopoda cinerea* Lap. .... 390.  
 9. *Sastrapada subspinosa* \* ..... 388.  
 10. *Canthesaneus trimaculatus* \* ..... 389.



- |   |   |
|---|---|
| 1. <i>Sphaeridops amoenus</i> LeP. et Serv. pag. 382. | 5. <i>Naucoris Poeyi</i> Guér. .... Page 434. |
| 2. <i>Cônorhinus rubrofasciatus</i> De Gécér. 384.    | 6. <i>Corisa colcostrata</i> Fabr. .... 448.  |
| 5. <i>Ptilomera laticaudata</i> Hardw. .... 414.      | 7. <i>Nolonecla mexicana</i> ? ..... 453.     |
| 4. <i>Mononyx raptorius</i> Fabr. .... 426.           | 8. <i>Anisops niveus</i> Fabr. .... 454.      |





1. *Aphana variegata* Guér. . . . . Page 297.  
 2. *Membracis cucullata*\* . . . . . 332.  
 3. *Enchophyllum cruentatum* Germ. 333.  
 4. *Mogannia illustrata*\* . . . . . 367.  
 5. *Hypsauchenia balista* Germ. . . . . 333.

6. *Heteronotus flavolineatus* Lap. Pag. 349.  
 7. *Pochazia fasciata* Fabr. . . . . 328.  
 8. *Cyphonia trifida* Fabr. . . . . 348.  
 9. *Polyglypta flavomaculata*\* . . . . . 341.



1.



2.



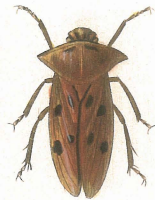
3.



4.



5.



6.



7.



8.



9.



10.

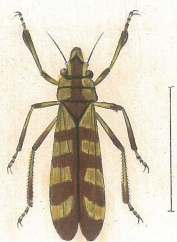


5 a.

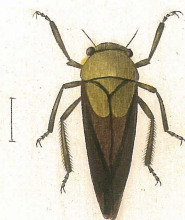


11.

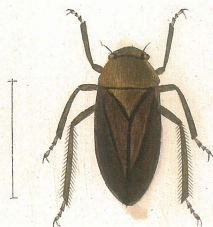
- |   |  |
|---|--|
| 1. <i>Physoplia crassicornis</i> *..... Page 543. | 7. <i>Sphenorhina lineolata</i> *..... Page 563. |
| 2. <i>Umbonia spinosa</i> Fabr..... 543.          | 8. <i>Orthorhaphia cassidioides</i> Westw. 562.  |
| 3. <i>Ceresa postfasciata</i> *..... 540.         | 9. <i>Pizelus trivirgatus</i> *..... 567.        |
| 4. <i>Eurytmela rubrovittata</i> *..... 555.      | 10. <i>Lepyrionia obscurata</i> *..... 567.      |
| 5. ——— <i>cythraenensis</i> Burm. .... 556.       | 11. <i>Tettigonia farinaria</i> *..... 570.      |
| 6. <i>Cercopis octopunctata</i> *..... 529.       |  |



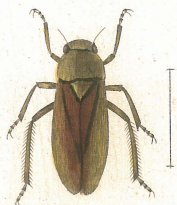
1.



2.



3.



4.



5.



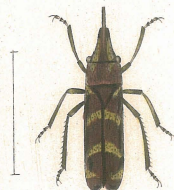
6.



7.



3 a.



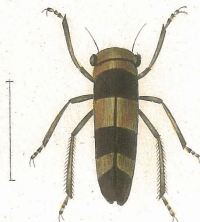
8.



8 a.



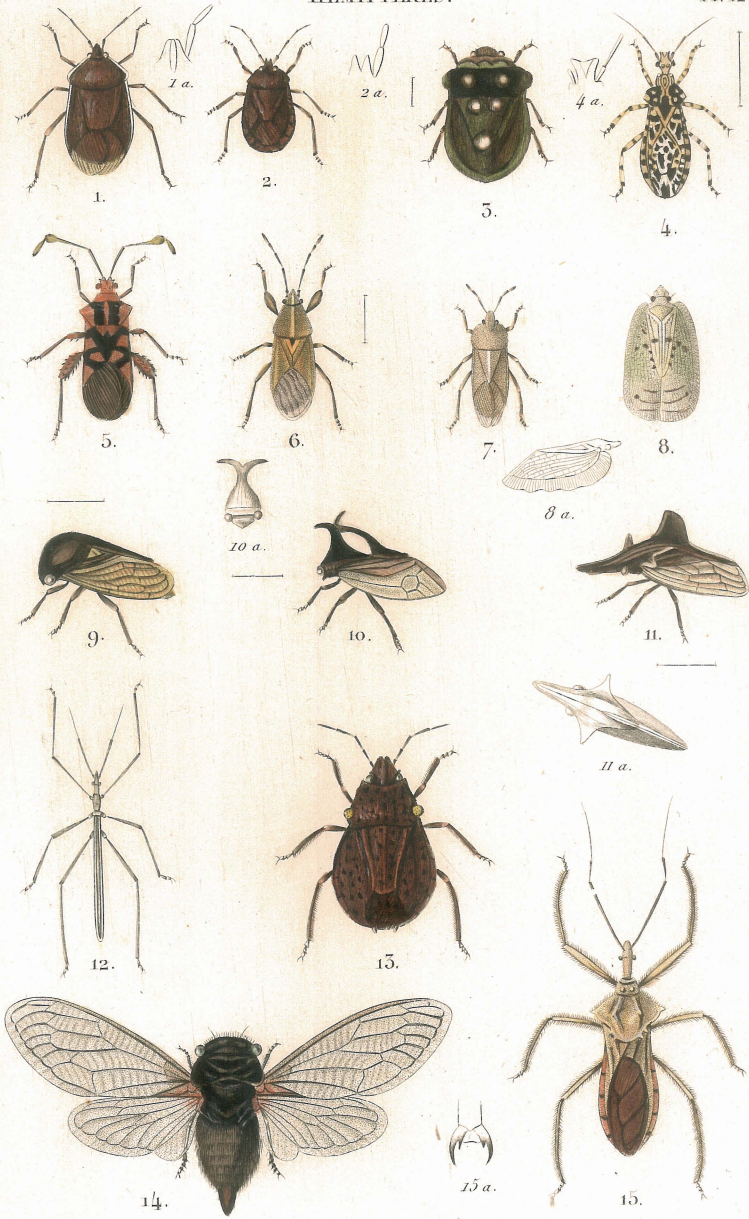
9.



10.

- 1. *Ciccus pervirgatus*\* ..... Page 373.
- 2. *Zinneca flavidorsum*\* ..... 379.
- 3. *Scaris ferruginea* Fabr. .... 379.
- 4. *Gypona glauca* Fabr. .... 380.
- 5. *Ledra perdita*\* ..... 377.

- 6. *Aglena ornata* Fried. .... Page 375.
- 7. *Darnis bifasciatus*\* ..... 345.
- 8. *Rhaphirhinus fasciatus* Fabr. .... 373.
- 9. *Aulacizex quadripunctata* Germ. .... 371.
- 10. *Tettigonia trifasciata*\* ..... 370.



- 1. *Menipha brunnea*\*..... Page 113.
- 2. *Oxyrhinus subsulcatus*\*..... 113.
- 3. *Tarisa flavescens*\*..... 60.
- 4. *Cethera variata*\*..... 348.
- 5. *Colona rubromaculata*\*..... 212.
- 6. *Chidancala dorsilinea*\*..... 238.
- 7. *Sephela linearis*\*..... 124.
- 8. *Phalonomorpha incubans*\*..... 523.

- 9. *Uroxiphus maculiscutum*\*. Page 350.
- 10. *Lycoderes fuscus*\*..... 352.
- 11. *Neosorhinus vulpes*\*..... 542.
- 12. *Rhaphidosoma Burmeisteri*\*..... 392.
- 13. *Rachava orbicularis*\*..... 213.
- 14. *Tettigades chilensis*\*..... 470.
- 15. *Cidoria flava*\*..... 336.