

Extract of GWEN Related Materials

Final Programmatic Environmental Assessment: Nationwide Differential Global Positioning System



Prepared for:

Federal Highway Administration

In cooperation with:

U.S. Department of Transportation Office of the Secretary

U.S. Coast Guard

Federal Railroad Administration

September 1999

Prepared by:

John A. Chamberlain, Environmental Consultant

Patricia L. Burns, Program Director

Envirotechnical Program

SRI International

333 Ravenswood Avenue

Menlo Park, California 94025

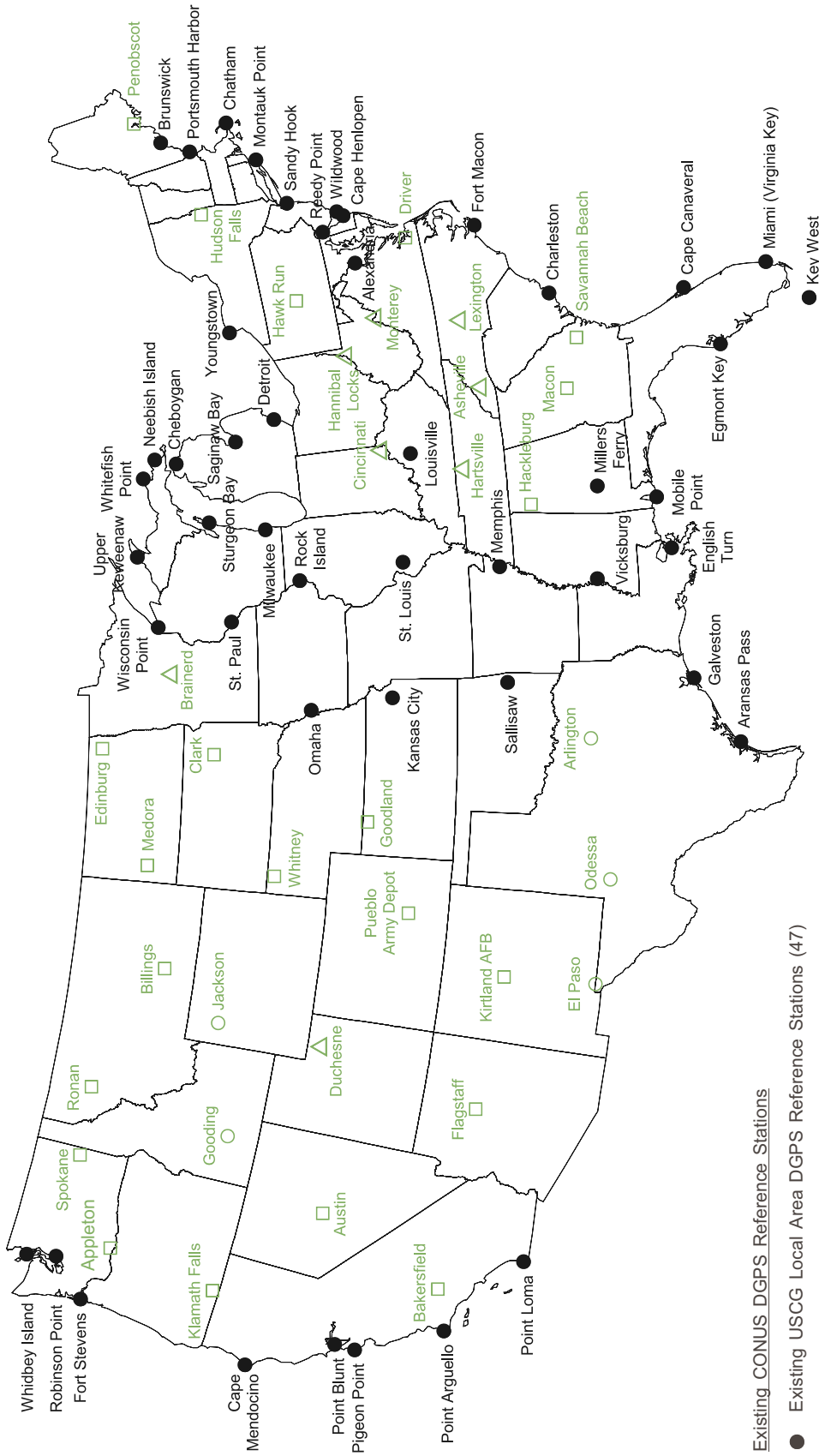
Submitted to:

Mr. Ted Pugh, Vice-President

PB Farradyne, Incorporated

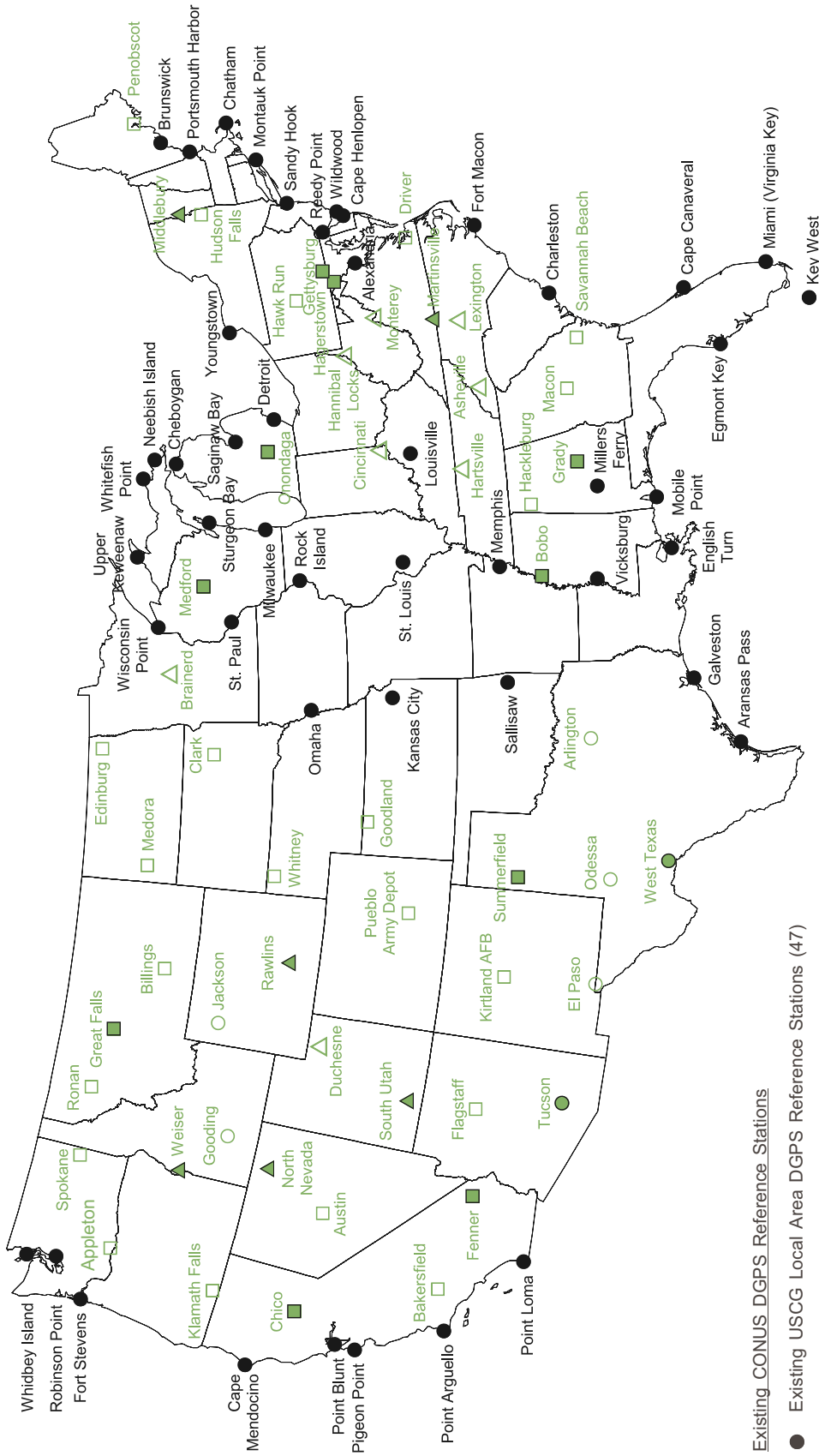
3200 Tower Oaks Boulevard

Rockville, Maryland 20852



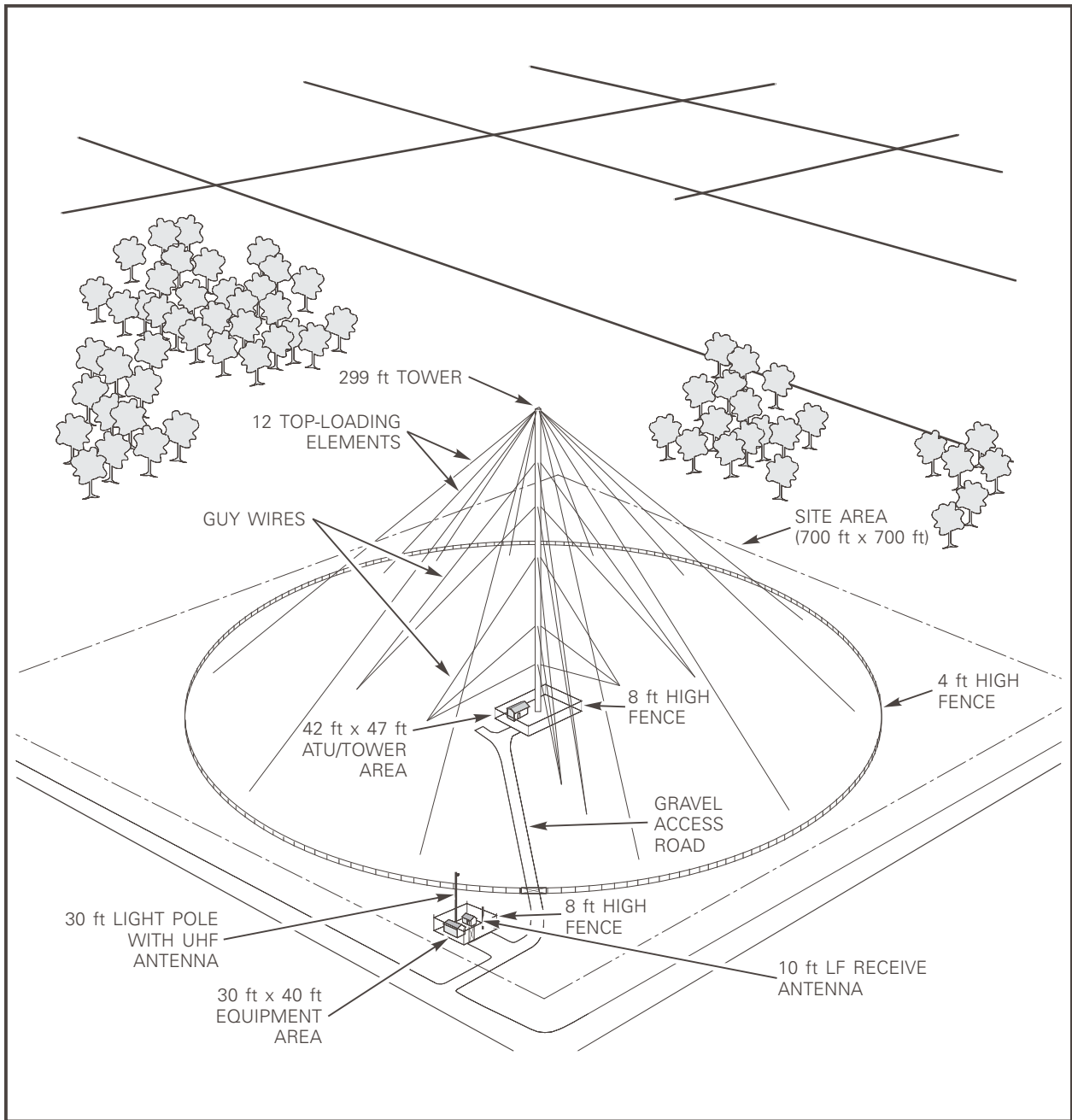
Sources: 1. <http://www.navcen.uscg.mil/ADO/DgpsLatestStatusComplete.asp>, 6/12/98.
 2. Monther Hammoudeh, "Book2.xls", PB Farradyne, 9/21/98.

FIGURE 8 EXISTING USCG DGPS AND PROPOSED NDGPS REFERENCE STATION LOCATIONS—PHASE I CONUS (PREFERRED ACTION ALTERNATIVE)



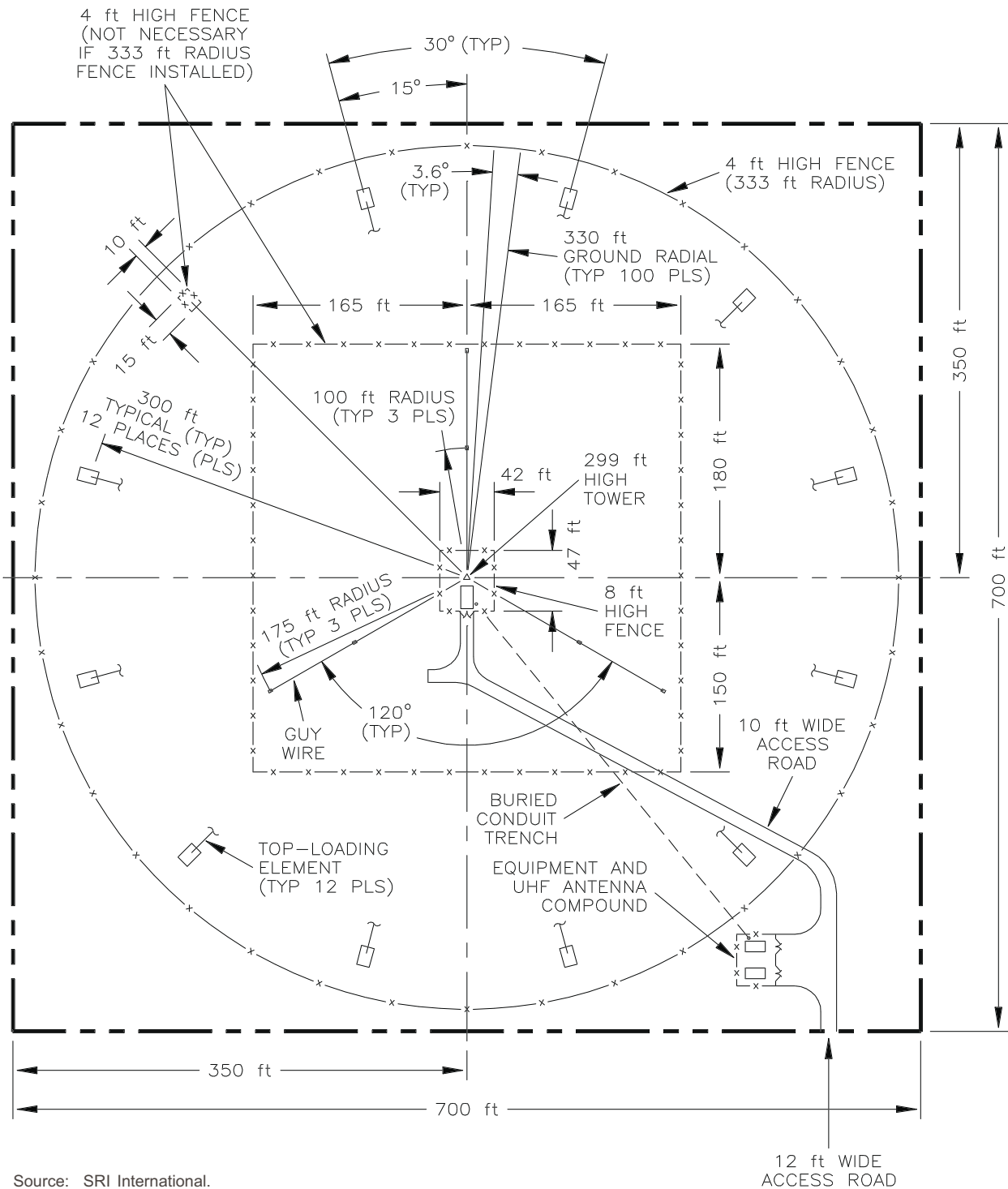
Sources: 1. <http://www.navcen.uscg.mil/ADO/DgpsLatestStatusComplete.asp>, 6/12/98.
 2. Monther Hammoudeh, "Book2.xls", PB Farradyne, 9/21/98.

FIGURE 12 EXISTING USCG DGPS AND PROPOSED NDGPS REFERENCE STATION LOCATIONS—PHASE I AND II CONUS



Source: SRI International.

FIGURE 16 TYPICAL GWEN RELAY NODE



Source: SRI International.

FIGURE 17 PLAN VIEW OF TYPICAL GWEN RELAY NODE



Source: SRI International.

FIGURE 18 PHOTOGRAPH: REPRESENTATIVE GWEN RELAY NODE (SAVANNAH BEACH, GEORGIA)



Source: SRI International.

FIGURE 19 PHOTOGRAPH: GWEN ANTENNA TUNING UNIT SHELTER AND SECURITY FENCE (SAVANNAH BEACH, GEORGIA)



Source: SRI International.

FIGURE 20 PHOTOGRAPH: GWEN EQUIPMENT AREA (WITH 30 ft TALL UHF ANTENNA, RADIO EQUIPMENT AND BACKUP POWER GROUP SHELTERS)