

Why the world needs Wikipedia...

...and Wikipedia needs you!



**WIKIMEDIA
FOUNDATION**

Presentation at FISL12

Barry Newstead, Chief Global Development Officer

29 June 2011, Porto Alegre, Brazil

Wikimania



Wikibooks

Wikipedia



Wikimedia Commons



Meta-wiki

Wikisource



Wikiquote



WIKIMEDIA

Wikinews



Wikispecies

Wiktionary



Media-wiki

Wikiversity



Wikimedia Incubator

VISÃO

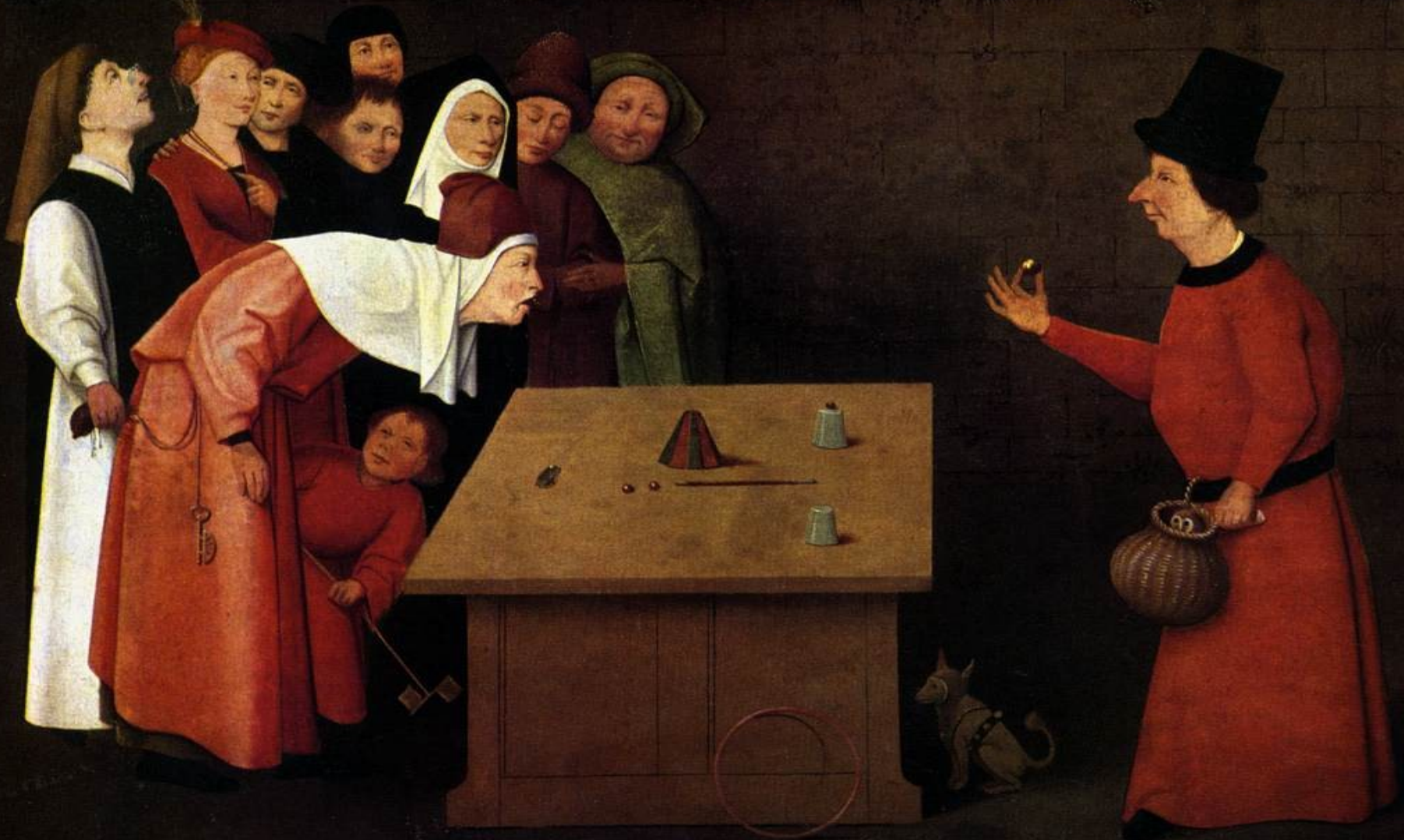
Um mundo em que cada ser humano tenha livre acesso à soma de todo conhecimento.

Our stats...large community serving humanity

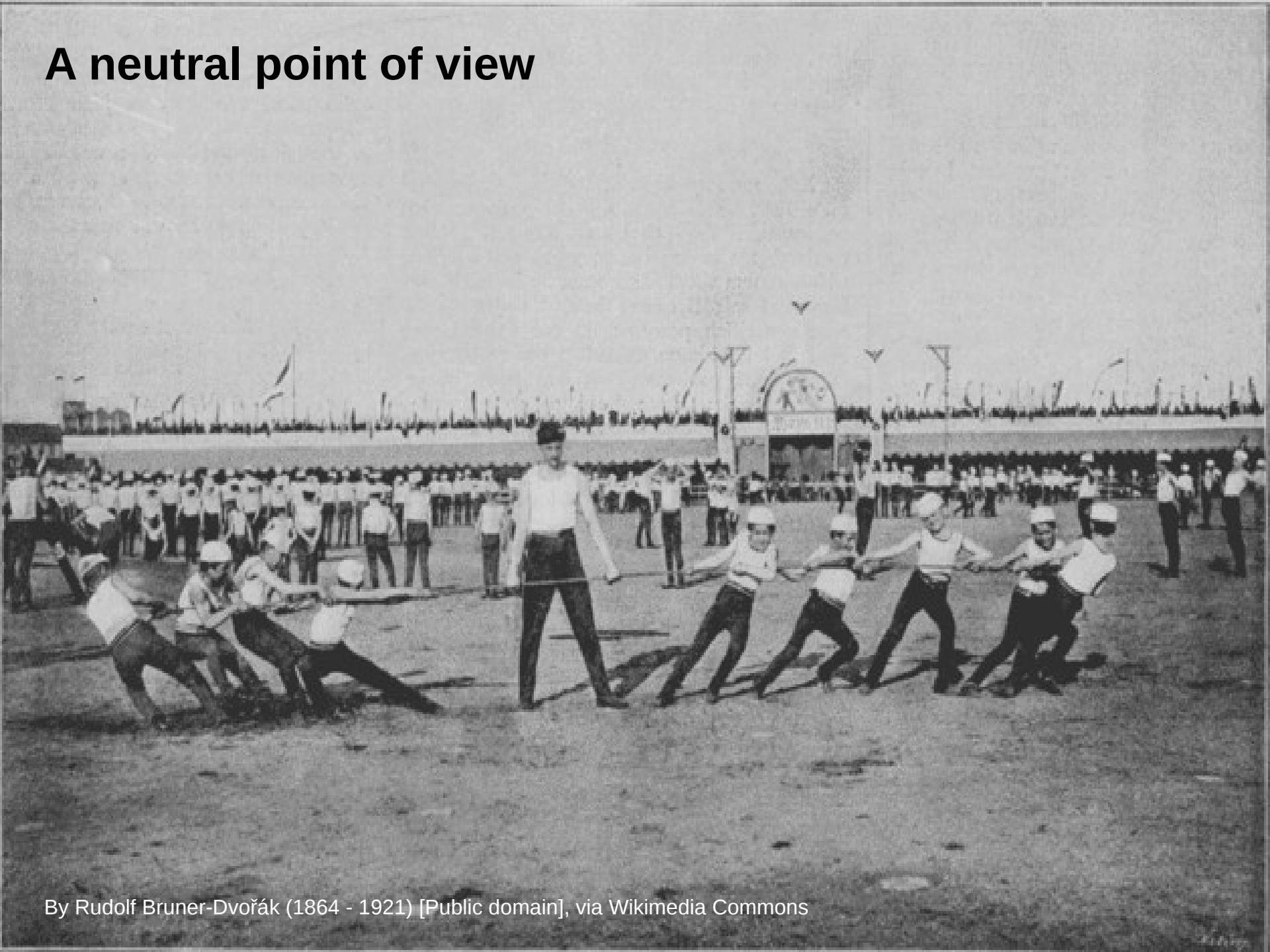
Monthly unique visitors	400,000,000
Articles available	18,000,000+
Photo and A/V Media files available	6,000,000+
Contributors to Wikipedia since inception	1,335,675
Active contributors each month	88,000

Why the world needs Wikipedia...

Serious about seeking truth in a world where truth isn't always a priority



A neutral point of view



By Rudolf Bruner-Dvořák (1864 - 1921) [Public domain], via Wikimedia Commons

Free as in
beer...



By Gonzalo Rivero (Own work) [GFDL (www.gnu.org/copyleft/fdl.html) or CC-BY-SA-3.0 (www.creativecommons.org/licenses/by-sa/3.0/)], via Wikimedia Commons

...ad-free experience on
the web



By Julian Fong (Natural Viagra) [CC-BY-SA-2.0 (www.creativecommons.org/licenses/by-sa/2.0/)], via Wikimedia Commons

Beacon for freedom (as in speech) on the web



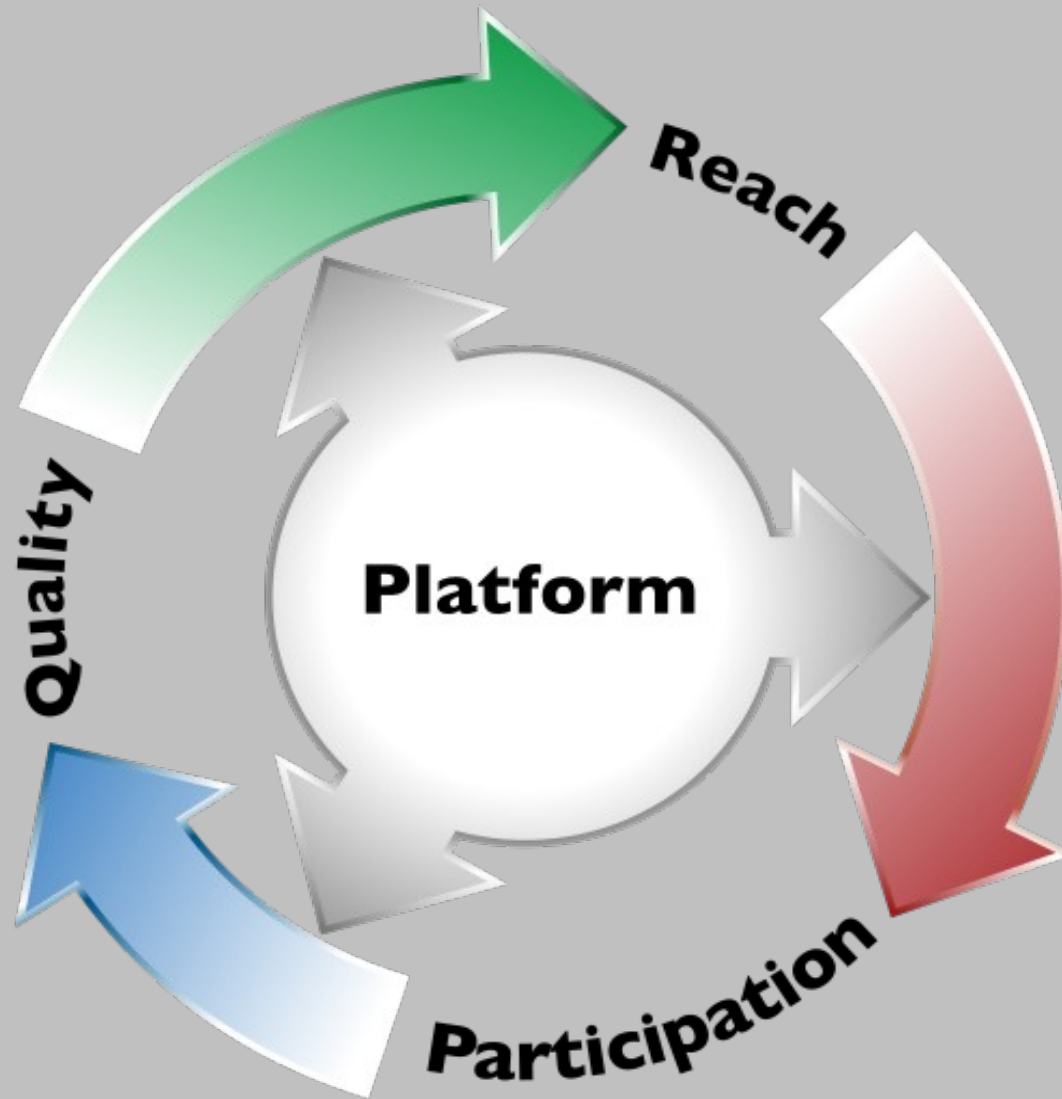
Knowledge is power!



Why Wikipedia needs you...

Wikipedia works because of people like you









WIKIPÉDIA A enciclopédia livre

- Página principal
- Conteúdo destacado
- Eventos atuais
- Esplanada
- Página aleatória
- Portais
- Informar um erro

- Colaboração
- Boas-vindas
- Ajuda
- Página de testes
- Portal comunitário
- Mudanças recentes

Artigo **Discussão**



Ler Editar Ver histórico

Pesquisa

Fórum Internacional Software Livre

Origem: Wikipédia, a enciclopédia livre.
(Redirecionado de [Fisl](#))

O **Fórum Internacional de Software Livre** acontece anualmente na cidade de [Porto Alegre, RS, Brasil](#). O fórum é considerado um dos maiores eventos do mundo na área por proporcionar uma discussão técnica, política e social sobre software livre de forma integrada. Reúne discussões, palestras, personalidades e novidades nacionais e internacionais do mundo do [software livre](#).

- Índice** [\[esconder\]](#)
- 1 FISL 12
 - 2 FISL 11
 - 3 FISL 10
 - 4 FISL 9.0
 - 5 FISL 8.0
 - 6 FISL 7.0

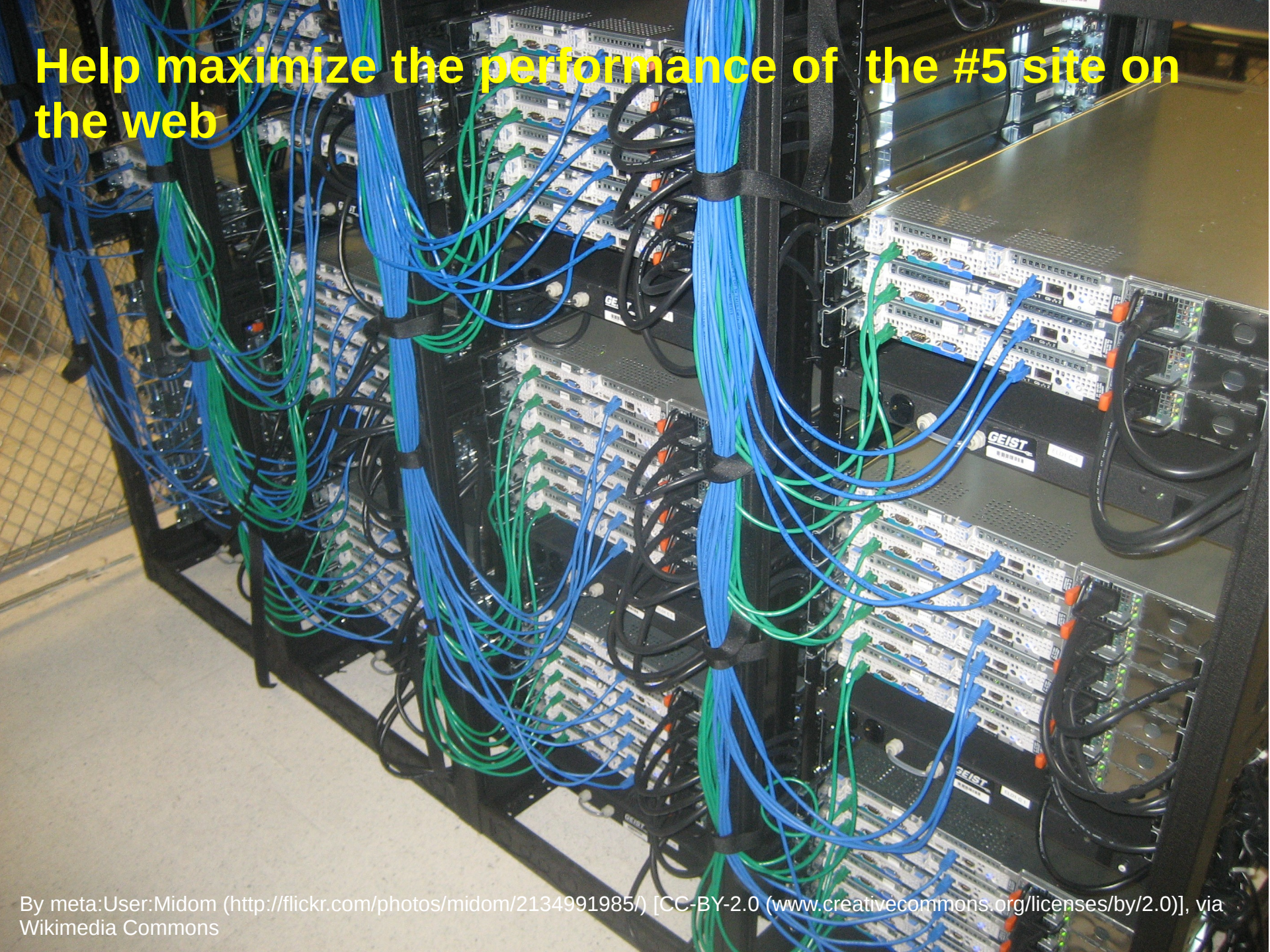


Encerramento do Fórum de 2004 com a apresentação do [Creative Commons Brasil](#).

A true FLOSS project... built by volunteer hackers



Help maximize the performance of the #5 site on the web



Help create a new visual/rich text editor and new features



- Main page
- Browse categories
- Community portal
- Recent changes
- Tech blog
- Current issues
- Support
 - User help
 - Technical manual
 - FAQ
 - Support desk
- Download
- Development
- Communication
- Print/export
- Toolbox

Welcome to MediaWiki.org

MediaWiki is a [free software open source wiki](#) package written in [PHP](#), originally for use on [Wikipedia](#). It is now used by several other projects of the non-profit [Wikimedia Foundation](#) and by [many other wikis](#), including this website, the home of MediaWiki.

Use the links below to explore the site contents. You'll find some content translated into other languages, but the primary documentation language is English.

For general questions about MediaWiki see the [communication page](#) or ask at the [support desk](#).

[About this site](#) | [About MediaWiki](#) | [Download](#) | [Help and support](#)

Users



- [What is a wiki?](#)
- Learn [how to navigate](#)
- Learn [how to edit a page](#)
- [Get more help](#)

System administrators



- [Install & configure](#) MediaWiki
- [Upgrade](#) an existing MediaWiki installation
- Add features with [third-party extensions](#)
- [Get more sysadmin help](#)

Developers



- [Become a MediaWiki hacker](#)
- Learn to use the [API](#) and [write extensions](#)
- Browse the [developer docs](#) and [class reference](#)
- Already a hacker? Visit the [developer hub](#)

Current version

- **1.17.0** – 2011-06-22

 [Download](#)

News

- **2011-06-22: 1.17.0 released**
 ✓ [MediaWiki 1.17.0](#) has been released.
- **2011-06-14: 1.17.0rc1 released**
 💡 [MediaWiki 1.17.0rc1](#) is now available.



How about innovating for the mobile and offline worlds?

Applications Places System Chrome Firefox S ? [Icons] bnewstead 59 °F Tue Jun 28, 12:2

Porto Alegre - Kiwix

File Edit Display Tools Help

Porto Alegre

Porto Alegre (pronunciation) is the 10th most populous municipality in Brazil, and the capital city of the Brazilian state of Rio Grande do Sul. Porto Alegre is one of the most important cultural, political and economic centers of Southern Brazil. Two Mercosul countries, Argentina and Uruguay, border Rio Grande do Sul. It is also the centre of Brazil's fourth largest metropolitan area.

Porto Alegre was founded in 1742 by immigrants from the Azores, Portugal. In the late 19th century the city received many immigrants from other parts of the world, particularly Germany, Italy, and Poland. The vast majority of the population is of European descent.

The city lies on the eastern bank of the Rio Guaíba (Guaiba Lake), at the point where five rivers converge to form the Lagoa dos Patos (Lagoon of the Ducks), a giant freshwater lagoon navigable by even the largest of ships. Located at the junction of five rivers, it has become an important alluvial port as well as one of the chief industrial and commercial centers in Brazil.

The port of Porto Alegre is important for transporting local produce. The "Gaucho capital" has a broad-based economy that lays particular emphasis on agriculture and industry. Agricultural production includes produce such as plums, peaches, rice and cassava grown on rural smallholdings. The shoe and leather industries are also important, especially in Novo Hamburgo, in the Metropolitan Region of Porto Alegre.


Porto Alegre has a long coastline on the Guaiba Lake, and its topography is punctuated by 40 hills. In the lake, a very vast body of water, a maze of islands facing the city create an archipelago where a unique ecosystem makes possible an exuberant wildlife. The city area concentrates 28% of the native flora of Rio Grande do Sul, with 9,288 species.^[1] Among these, there are many trees which are the vestiges of the Atlantic Forest. Fauna is also diversified, specially in the islands and hills. The portoalegrense way of life includes many parks, squares and wooded streets.

In recent years, Porto Alegre hosted the World Social Forum, an initiative of several Non Government Organizations.



Porto Alegre

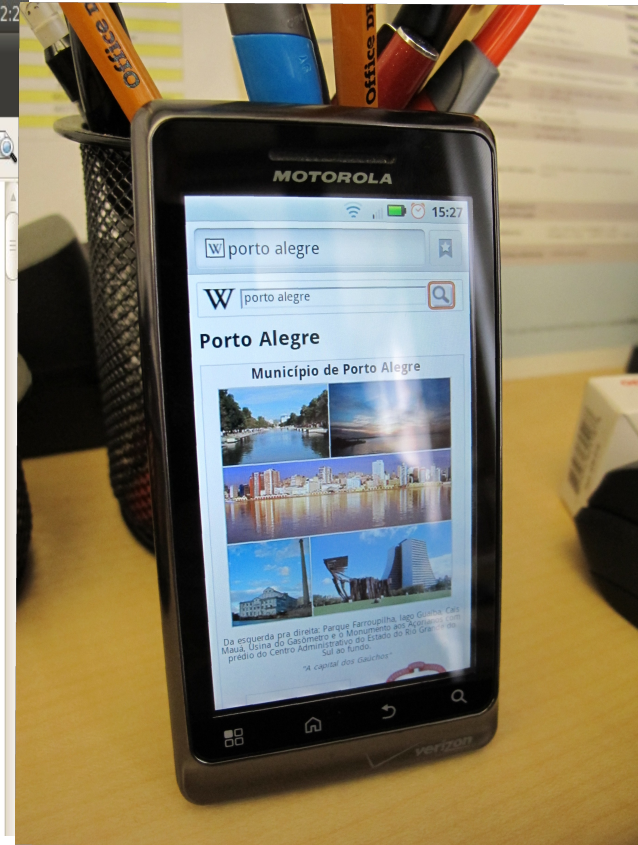
— Municipality —

The Municipality of Porto Alegre



Skyline of Porto Alegre





Introduce Wikipedia to the world beyond...



By Gngarra (Own work)[see page for license], via Wikimedia Commons

Build community and make friends



Catalyze Brazil's Wikipedia community



What to do now...yes you can, right now ;)

1. Click Edit on any Wikipedia article and try it out!

2. Join our dev community

http://www.mediawiki.org/wiki/Developer_hub

3. File bugs - <https://bugzilla.wikimedia.org/>

4. Teach others about Wikipedia

http://outreach.wikimedia.org/wiki/Main_Page

5. Work with libraries, archives, museums to free knowledge and improve Wikipedia

<http://outreach.wikimedia.org/wiki/GLAM>

6. Organize a meetup, hack-a-thon, social gathering

<http://en.wikipedia.org/wiki/Wikipedia:Meetup>

7. Innovate!

Muito Obrigado!

Barry Newstead
Wikimedia Foundation

bnewstead@wikimedia.org
• [@bazanews](https://twitter.com/bazanews)

