

*S. Eva Nessenius*

**Evolution and geological planet formation -  
*the biogenic origin of the early continents of the earth***

© S. Eva Nessenius. Published by Books on Demand GmbH,  
Norderstedt, Germany, August 2012. **ISBN 978-3-8482-1837-0**

All rights reserved by the author. No part of this publication may be reproduced without a prior permission of the author. For excerpts please follow the common standard of crediting.

# Evolution and geological planet formation

## - the biogenic origin of the early continents of the earth

I confirm that this is my own work presenting the results of my own interdisciplinary scientific research.

**Abstract:** These are the results of my investigations about early evolution and biomineralisation as fundamental process in the formation of the early earth. Due to the fact that rocks significantly older than the earliest traces of living organisms on earth are rare and to the latest astronomic findings of water in protoplanetary discs the following is introduced as working-hypothesis: In the habitable zone of a protoplanetary disc secondary aerosols and hydrous silicon are the starting basis for chemical evolution and Precambrian prebiotic and cellular life in a global primordial soup. Mineral substances are accumulated from hydrous solutions by biomineralisation. Photosynthesis causes the great rise in oxygen enhancing oxidation of dissolved minerals and metals falling out as insoluble substances. On biogenic preliminary continents undersea reef-building organisms make them grow on. Increasing radiation of the young sun since the Paleozoic transforms early sediments into magma and metamorphic rocks. Due to cool origin [1] and early beginning of life based on secondary aerosols and hydrocolloids, the early earth was not only a planet-embryo in the astronomical sense but also in the biochemical sense. This paper includes a new explanation for the origin of the moon.

Key words: Planet formation, early earth, biomineralisation, Precambrian, Pangaea.

### 1. Introduction

At the Conference Planet Formation and Evolution of planetary systems 2012 scientists discussed various problems in laboratory experiments simulating the growth of planetesimals. Although experimental set ups are getting improved, resulting bodies never exceed a certain limited size. I suggest arranging the known processes in a new succession and testing them by new experiments.

## 2. Hypothesis

In this hypothesis the forming-processes are arranged in seven stages. The first hypothetical stage needs to undergo experimental verification.

### Stage 1: Hydrous aggregation and chemical evolution

Origin of the young sun's protoplanetary disc containing silicium, hydrogen and gaseous compounds including water [2] from which in the Miller-Urey-Experiment amino acids form [3] as found in the Murchison Meteorite [4].



Fig. 1: Protoplanetary disc (artist's impression)

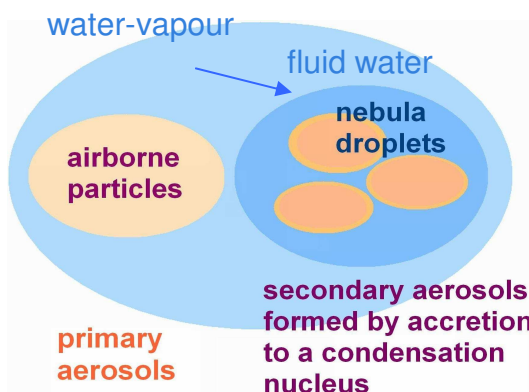


Fig. 2: Secondary aerosols as starting basis for a hydrous accretion

In sufficient distance from the young sun ionized gaseous mineral-compounds connect to molecules. In the cold zone far away from the sun water evaporates from ice. Huge slowly rotating vortices of water vapour are enveloped by icy aggregations on the night-side. In their interior water-vapour condenses to droplets because the mineral compounds work as aerosols enhancing condensation. Inside atmospheric globes the gravitational pressure becomes high enough to allow the existence of fluid nebula-droplets. An icy mantle, water-vapour and fog shield the interior from ionizing radiation and induce a greenhouse-effect. The warmth dilutes the inner surface of the ice, while on the cold outer surface new icy aggregations are added on the night-side. This way, atmospheric globes start growing. Primordial planet-embryos have an enormous volume, due to the high content of gases, hydrocolloids and light

substances. Minerals and metals enrich the primordial soup in the chemical state of hydrous solutions. Silica gel serves as basic material for the evolution of planet-embryos as matrix for amino-acids and proteins [5]. In the deep interior the silica gel gets condensed by pressure and heat, delivering water, forming silica aerogel and liquid silicon-compounds.

At 160°-200°C carbon-monoxide and hydrogen can connect to methane and high aliphatic hydrocarbons like in the Fischer-Tropsch-Synthesis [6]. Amino-acids, purines and pyrimidine – the basic elements for nucleic acids – can be generated catalysed by Ni, Fe, magnetite and hydrous silicon.

“Aerosol particles in the atmosphere have recently been found to contain a large number of chemical elements and a high content of organic material. The latter property is explicable by an inverted micelle model. The aerosol sizes with significant atmospheric lifetimes are the same as those of single-celled organisms, and they are predicted by the interplay of aerodynamic drag, surface tension, and gravity. We propose that large populations of such aerosols could have afforded an environment, by means of their ability to concentrate molecules in a wide variety of physical conditions, for key chemical transformations in the prebiotic world. We also suggest that aerosols could have been precursors to life, since it is generally agreed that the common ancestor of terrestrial life was a single-celled organism”[7].

DOBSON’s statements are based on the assumption that the atmosphere originated after some hot planet-formation according to the old theory of accretion. But his results are also applicable to a primordial atmosphere and a primordial soup in a habitable zone in the interior of a proto-planet, as space-telescopes recently detected a plenty of water-vapour in protoplanetary discs. The compounds to generate amino-acids like in the Miller-Urey-Experiment, nitrogen, ammonia, methane, carbon-monoxide and carbon-dioxide, are already available in abundance as well.

“We present detections of numerous 10-20  $\mu\text{m}$   $\text{H}_2\text{O}$  emission lines from two proto-planetary disks around the T Tauri stars AS 205A and DR Tau, obtained using the InfraRed Spectrograph on the Spitzer Space Telescope. Follow-up 3-5  $\mu\text{m}$  Keck NIRSPEC data confirm the presence of abundant water and spectrally resolve the lines. We also detect the P4.5 (2.934  $\mu\text{m}$ ) and P9.5 (3.179  $\mu\text{m}$ ) doublets of OH and  $^{12}\text{CO}/^{13}\text{CO}$   $v = 1 \rightarrow 0$  emission in both sources. Line shapes and LTE models suggest that the emission from all three molecules originates between  $\sim 0.5$  and 5 AU, and so will provide a new window for understanding the chemical environment during terrestrial planet formation. LTE models also imply significant columns of  $\text{H}_2\text{O}$  and OH in the inner disk atmospheres, suggesting physical transport of volatile ices ..., while the ... radial extent of the emission stresses the importance of a more complete understanding of non-thermal excitation processes” [2].

Arranging known processes in new succession, I suggest a chemical evolution already taking place in phase of accretion and that the planet-embryos of Earth and Mars bear early stages of life very soon. “With the paleobiological evidence from the currently known Archaean rock record at hand, the existence of microbial (prokaryotic and archaeoprokaryotic) life as from 3,8 b. yr ago seems to be firmly established. Both the paleontological record (microfossils and stromatolithes) and the available biogeochemical data (specifically the  $^{13}\text{C}/^{12}\text{C}$  age function of sedimentary organic carbon as index line of autotrophic carbon fixation) convey a remarkably consistent picture of the existence of microbial ecosystems ... as from the very beginning of the presently known sedimentary record. Residual questions primarily center around the impairment of relevant information in the oldest record that bears a metamorphic overprint ... and problems of the time scale of early organic evolution as posed by the unheralded appearance about 3.8 b. yr ago of the prokaryotic cell which leaves an uncomfortably narrow time span for the initiation and early diversification of life since the Earth’s formation some 4.5 b. yr ago” [8].

Silicon-biochemistry has a high tolerance for temperatures [9, 10, 11]. Cells containing hydrogen-peroxide are protected from freezing [12]. Extremophile Protobionta develop Protocytes [13]. Methanogen and other extremophile archaea produce substrates for further biochemical reactions. Worldwide colonies of colloidal and cellular microorganisms fill the primordial soup as global ecosystem.

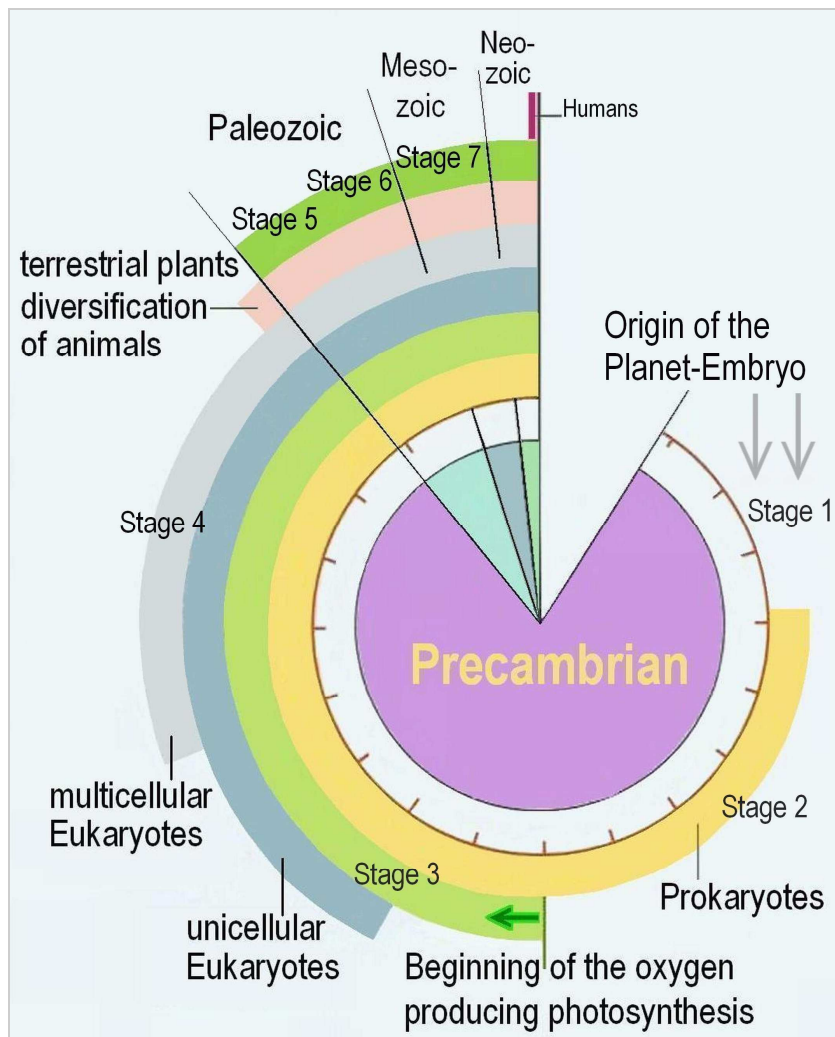


Fig. 3: Timescale of early evolution and biodiversification.

Precambrian is the longest time in earth-history. It should not be considered as a geologic age after the planet's origin but as the time of the formation of the planet-embryo. According to VALLEY [1] and SCHIDLOWSKI [8] a cool early earth allows early prokaryote life very soon. The early appearance of extremophiles and other prokaryotes and the missing of rocks older than the earliest traces of life imply a new scenario of planet formation.

“No known rocks have survived from the first 500 million years of Earth history, but studies of single zircons suggest that some continental crust formed as early as 4.4 Ga, ... , and that surface temperatures were low enough for liquid water. Surface temperatures are inferred from high  $d^{18}\text{O}$  values of zircons. The range of  $d^{18}\text{O}$  values is constant throughout the Archean (4.4-2.6 Ga) suggesting uniformity of processes and conditions. The hypothesis of a Cool Early Earth suggests long intervals of relatively temperate surface conditions from 4.4 to 4.0 Ga that were conducive to liquid-water oceans and possibly life. Meteorite impacts during this period may have been less frequent than previously thought” [1].

## **Stage 2: Biomineralisation**

In the early Precambrian colonies of extremophile archaea and bacteria start producing mineral-sediments. Some gain energy from sulfate-reduction in presence of carbon producing Pyrit and Markasit. Iron-bacteria oxidate dissolved  $\text{Fe}^2$  into insoluble  $\text{Fe}^3$  by anoxygenous photosynthesis. Diatoms accumulate silica. Many new materials are generated by Biomineralisation as effect of chemosynthesis and anoxygenous photosynthesis in marine colonies of autotrophic prokaryote organisms.

“The abundance of silica as well as calcium and carbonate ions in the ancient marine environments ... and the existence of chitin and collagen primary scaffolds in primitive biological form ... led to the formation of unique biocomposites, possessing completely new qualities” [14].

## **Stage 3: Great rise in oxygen enhancing mineralisation**

Cyanobacteria produce calcium-carbonate. Photosynthesis of Cyanobacteria and Algae initiates the rise in oxygen enhancing the oxidation of dissolved minerals and metals falling out as insoluble substance. Biogenic marine sediments form growing dense fractions in the global primordial soup. The abundance of oxygen sets in motion the evolution of a rich marine eukaryote-fauna [13].

## **Stage 4: Reef-building organisms and Cambrian radiation**

On organically grown shapes of colloid preliminary phases of the earliest continents partially cemented by biomineralisation dwelling under water reef-building organisms as sponges and corals make them grow on. Other marine organisms descending from stem-cells of the planet-embryo conserve genetic information of the global organism. This gen-pool is the starting basis for the Cambrian radiation recombining the planet embryo's genetic information in a multitude of eukaryote multicellular plants, fungi and animals.

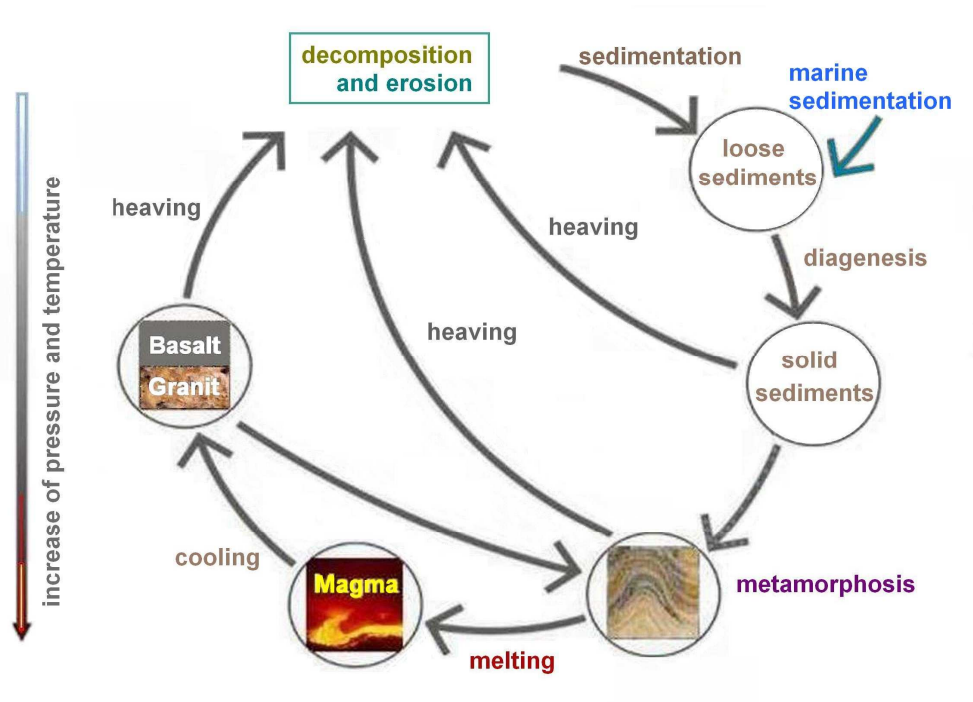


Fig. 4: The cycle of rocks begins with **marine biogenic sediments** as starting basis.

So we may draw the conclusion, that the magma is a secondary product of following melting-processes in Paleozoic and Mesozoic. Hot phases of earth history are proven in Devonian, Permian, Late Triassic and Late Cretaceous in a time-correlation with flood-basalt events and mass extinctions [15]. This can be interpreted as effect of an increasing radiation of the young sun with periodical oscillations also affecting the planet's interior, because according to this hypothesis the earth does not have a cohesive isolating lithosphere yet, so that exogenous and endogenous factors can interact over long periods of time. In Devonian in Siberia biogenic sediments in the interior melt and convert into magma. Pressure from expanding gases causes locally limited eruptions. The large part of the earth-embryo remains watery and permeable until the end of Carboniferous. The early continents continue growing by biological processes.

### Stage 5: Embryonic stages until the cool watery Carboniferous

The early continents in their organically grown shapes are still partially under water. Since Cambrian more and more surfaces arise above sea-level. Paleo-Tethys is the only deep Ocean. Southern Gondwana freezes in a cold phase in the Late Carboniferous. Plants have conquered all marshy grounds and landmasses. Photosynthesis increases the atmospheric oxygen to its maximum in earth-history: 30%. High oxygen-availability allows insects to grow big. The evolution of plants and animals is booming. The earth-rotation is slow as the planet-embryo still contains lots of water, less dense rock-materials and therefore has more volume.



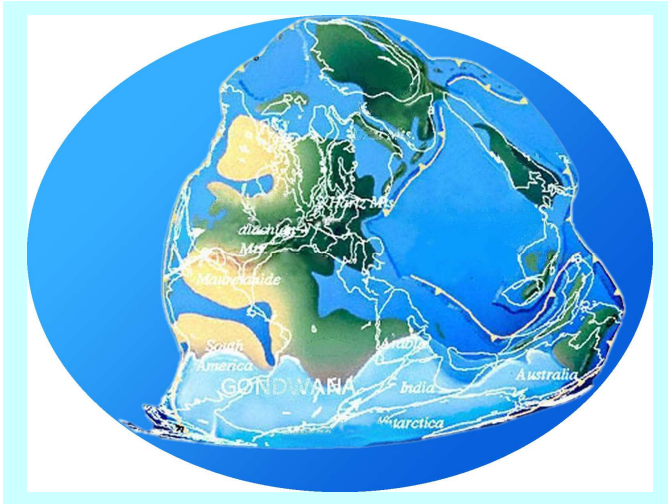


Fig. 5: Paleomap Scotese (2003): Carboniferous

### Stage 6: A very hot phase in Permian and the emerging of the moon

Permian is an extremely hot phase. Most of the waters from seas and swamp-lands evaporate. More landmasses get exposed to the sun. The lithosphere dries out and hardens. New lithosphere-crusts hinder the release of heat from the interior causing an increase of pressure. Nuclear chain-reactions boost the heating by self-excitation. The melting of sediments becoming magma causes a decrease of volume. Some become metamorphic rocks. Mercury, Venus and Mars are affected as well with various results due to their different distances from the sun. Mars loses its atmosphere and most of its water-supplies.

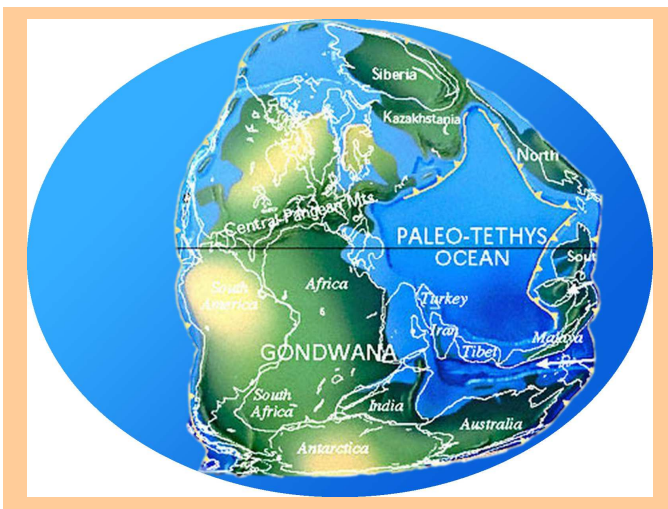


Fig. 6: Paleomap Scotese (2003): Permian

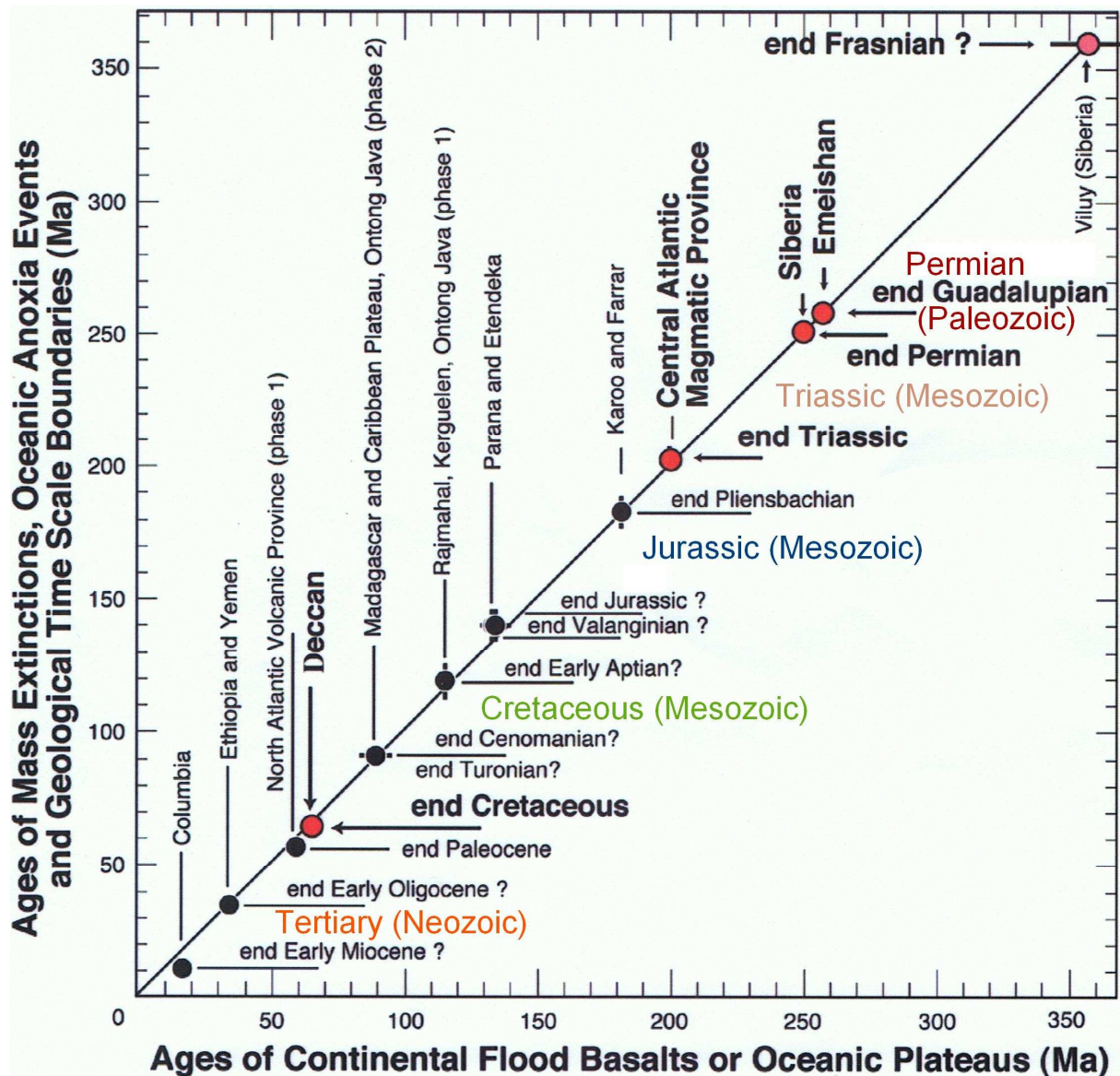


Fig. 7: Time-correlations of mass-extinctions and flood-basalt-events.  
Graphic: COURTILOTT / RENNE: Comptes Rendus Geoscience 335(1) 2003 [11].

Flood-basalt-events are not only in a time-correlation with mass-extinctions but also with maxima of global temperatures [16]. Exogenous and endogenous factors seem to interact in the hot phases affecting the geospheres for millions of years. Does the time-interval between two hot phases correlate with one orbit of the sun around the galactic centre? Can the radiation increase, when the sun approaches the periapsis to the galactic centre? Are there any or other calculable astronomic reasons for a periodic heating? Geological timescales can be rendered more precisely, when these questions are answered.

The oldest mineral on earth and moon is Zircon. “Studies of single zircons suggest... that surface temperatures were low enough for liquid water” [1]. On this basis the following scenario is possible: In the earlier Paleozoic the moon is still inside of the earth originating under the same conditions.

***The material of the moon originates inside the earth and therefore has the same age.*** In Permian biogenic sediments in the deep interior are molten into magma. Due to high gravitational pressure in the earth's interior the heating-processes start where the boundary values for nuclear chain reactions are exceeded. In upper layers the lithosphere dries. In a moderately heated region in between sediments are transformed to metamorphic rocks. A loss of volume accelerates the planet's rotation. The centrifugal forces have their maximum effect at the equator. The prospective moon-material in the earth-interior has a different density. It slowly moves to the earth-surface. Along the edges of the organically grown shapes of Pangaea the dried out lithosphere gets torn apart. The moon emerges slowly, causing a release of pressure in the earth-mantle. Pressure-reduction turns de-densified masses in the lower earth-mantle into superplumes rising under the opening [17].“ ... in Pennsylvanian-Permian time. These times coincide with increases in world temperature, deposition of black shales, oil generation ... and increased coal generation and gas accumulation in the Pennsylvanian-Permian, accompanied by ... Pennsylvanian transgression of epicontinental seas. These geologic anomalies are associated with episodes of increased world-wide ocean-crust production and mantle outgassing, especially of carbon and nutrients. These superplumes originated just above the core-mantle boundary, ... increased convection in the outer core” [18]. At the surface Rift Valleys open and sea-floor-spreading begins. Pacific and Atlantic ocean-floors start expanding simultaneously. The torn apart elements of the former Pangaea move in opposite directions. At first an east-west-aligned ridge makes South-America and Africa move southwards opening the Central Atlantic Ocean. The moon-opening (Fig. 8 yellow ring) moves southwards too. Then the continents move to both sides of the young north-south-aligned mid-ocean-ridges. The original opening is located under the Easter Islands today. In the following cold phase expansion slows down, but convection-currents keep driving the sea-floor-spreading. On the opposite edges of the ocean-floor-plates excess material gets pushed under the lighter continental plates. The following hot phase enhances the expansion again. The next cold phase slows it down again and so on.

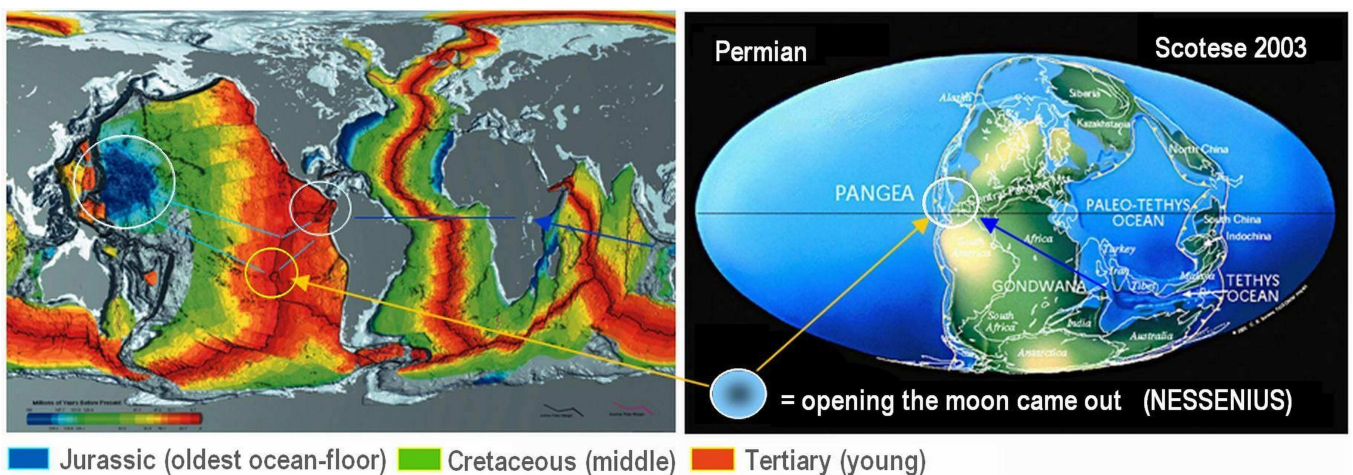


Fig. 8: Ages of origin of the ocean floors. Fig. 9: Emerging of the moon in Permian.

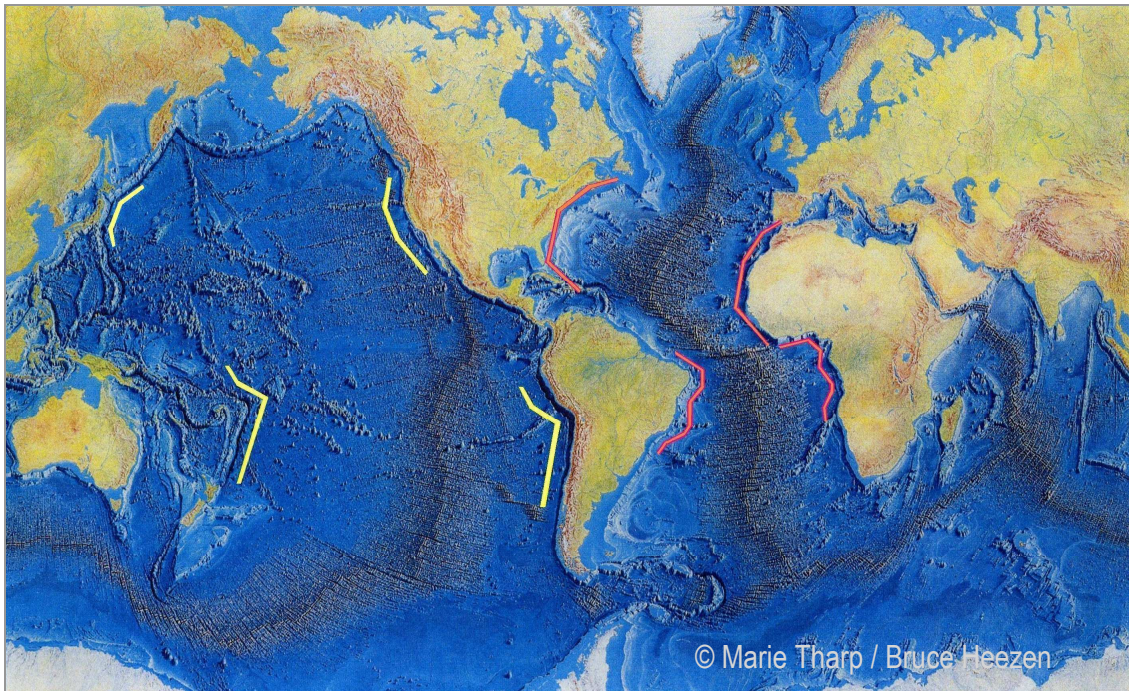


Fig. 10: World Ocean Floors in the Holocene, the latest time of the Neozoic. Before Permian the coast-lines (red and yellow) were located together as one not yet hardened but cohesive earth-surface.

Geologic dating (fig. 8) proves the simultaneous forming of the Pacific and Atlantic ocean-floors. The oldest region is the “old hole” close to the Mariana-Trench (fig. 8 round dark blue area). East of the east-pacific-rise large parts of the Cocos-, Nazca- and Juan de Fuca plate submerged under America. Therefore in the East-Pacific the Cretaceous and Jurassic ocean-floors are missing. This has the following reason: Before the Pacific ocean-floor originated, the west coasts of North- and South-America were located together with the Asian east coast and the Tonga plate. The “old hole” was still located in the middle. After the emersion of the moon in Permian the newly originated ocean-floors are driven symmetrically in opposite directions. The eastern parts of the oldest ocean-floors disappear under America filling the vacated space left by the moon. At the Mariana- and Tonga-Trench less material submerges, because the moon came from the east moving westwards, when the eastward earth-rotation was accelerated. The Jurassic Atlantic ocean-floor between West-Africa and the Caribbean was the Central Atlantic Ocean. This is a trace of the moons pathway under the surface of Pangaea moving westwards along the equator closely under the surface and breaking it open before its complete emerging.



Fig. 11: The earth in Jurassic: The former pathway of the moon is visible (arrows).

### Stage 7: See transgressions and plate tectonics

In a following period of turbulence the new continents continue drifting apart. In Mesozoic two more hot phases occur with cool periods in between. In hot phases with new expansion-impulses and flood-basalt-events several heavings of ocean-floors at mid-ocean-ridges cause three Mesozoic sea-transgressions (Triassic-, Jurassic-, and Cretaceous-Sea). After Permian the planet becomes a dead geophysical orb and so does the moon also affected by extreme heat in Permian. The lithosphere gets bake by interior magma-heat and becomes dead material, still filled with microorganisms but not consisting of them any more. The organically grown shapes of the continents are now modified by plate tectonics. The plates expand by the geophysical process sea-floor-spreading. Although subduction is happening the Pacific cannot become smaller, because the east-pacific-rise has the highest dilatation-rate of all mid-ocean-ridges on earth, even in a cool phase like Pleistocene and Holocene. Subduction cannot compensate the increase of volume.

For the moon, because of accelerated earth-rotation, centrifugal forces were stronger than earth's gravity-field. The released motion of the moon slows down, but with increasing altitude the effect of earth-gravity diminishes. As the radius of the moon's orbit increases, the rotation of the earth-moon-system slows down. Moon's orbit becomes independent from earth-rotation. As the moon stays connected in the moon-earth-system, it is always visible from the same side. Earth-rotation gets retarded by the moon but also as consequence of nuclear reactions in the earth's interior causing an increasing volume, because the moment of inertia increases with the extended earth-radius.

### 3. Findings form the planet-embryo – morphological and genetic traces

The following can only be understood by a complete comprehension of the biogenic formation of the early continents. According to this idea, the early continents have organically grown shapes overprinted by biogenic sediments from the reef-building organisms. In the hot phases in Devonian, Permian, end of Triassic and end of Cretaceous the lithosphere died. Since Permian the geophysical process of sea-floor-spreading leads to the further dilatation.

Before, in the Precambrian global ecosystem many early Prokaryotes are able to perform horizontal gen-transfer. All genetic information from the gen-pool can be combined and collected in the **stem-cells of the planet-embryo**. Endosymbiosis is an important step developing Eukaryotes with a cell-nucleus conserving huge amounts of DNA. Multicellularity and segmentation with forming of heads are further steps in higher development. Coelenterates are on a stage comparable to the gastrula. Coelenterates and other non-segmented animal phyla like Molluscs develop many kinds of organs in the central part of their body which can be considered as head, as it contains the centre of the nervous system.

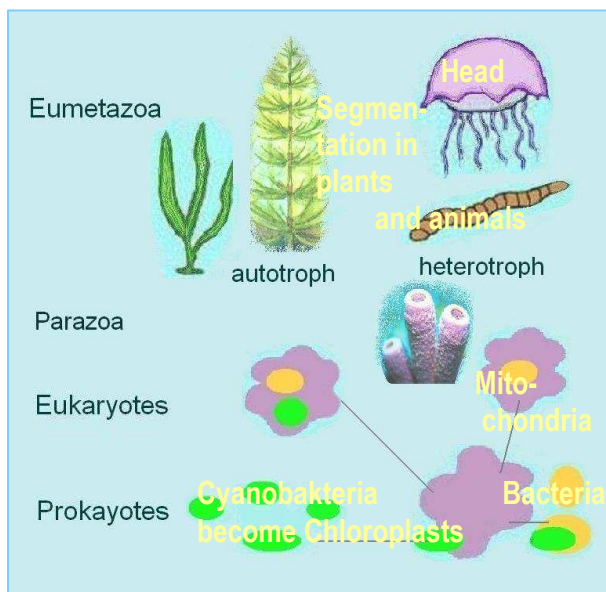


Fig. 12: Endosymbiosis, multicellularity, segmentation and head-forming.

Biologists look for reasons for the rapid animal evolution in the Cambrian radiation. It can be interpreted as consequence of the existence of genetically rich stem-cells coming from a differentiated global ecosystem identical with the watery organism planet-embryo. Its gen-pool and its multitude of different stem-cells was the starting-basis for the Cambrian radiation. Therefore many new animal-phyla could originate simultaneously in such a short time.



Fig. 13: Coelenterate      Fig. 14: Cephalopod-embryo.      Fig. 15: Cambrian Trilobite.

Cephalopods have highly developed eyes, although they are still protostomes. The eye appears early in evolution and also in embryonic development.

Only a small part of the DNA is used in the lifetime of an organism. The rest lies on introns or never gets expressed for other reasons. The entire genome of a living being is an assemblage of ancient characteristics not getting realized on the phenotypus. The characteristics can be reactivated appearing as atavism or in the course of higher evolutionary development.

The term “biological species” is defined as entirety of individuals able to have common descendants. As the worldwide colonies of prokaryotes can exchange and collect genetic information by horizontal gen-transfer, the planet-embryo is identical with the hypothetical common ancestor of all living beings. In biological organisms most cell-nuclei contain the complete genome for the whole individual. Therefore there can have been cells in the planet-embryo containing the information to build the shape of an embryonic head. In some early phase of planet-formation silicium-molecules can have been a carrier of information as well. Now some interesting findings are presented with provable explanations in combination with non-provable speculations:

There are geomorphologic relicts of huge size on one hand and genetic-morphologic relicts in highly developed organisms on the other hand to which the genetic information has been passed on in sleeping genes all the way up the line of evolution beginning in Cambrian until Neozoic. Comparing both, correspondences can be seen and can be explained on natural-scientific basis, but the explanations are so hypothetical, that I do not expect a common acceptance. However they are presented to make them available for those, who find it interesting.

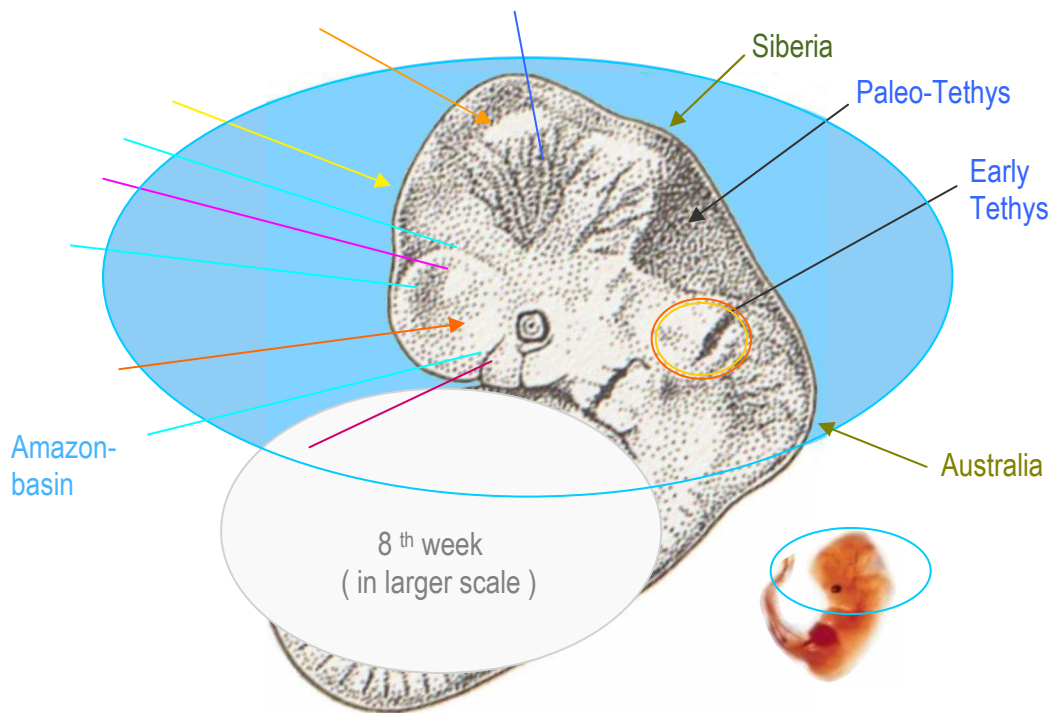
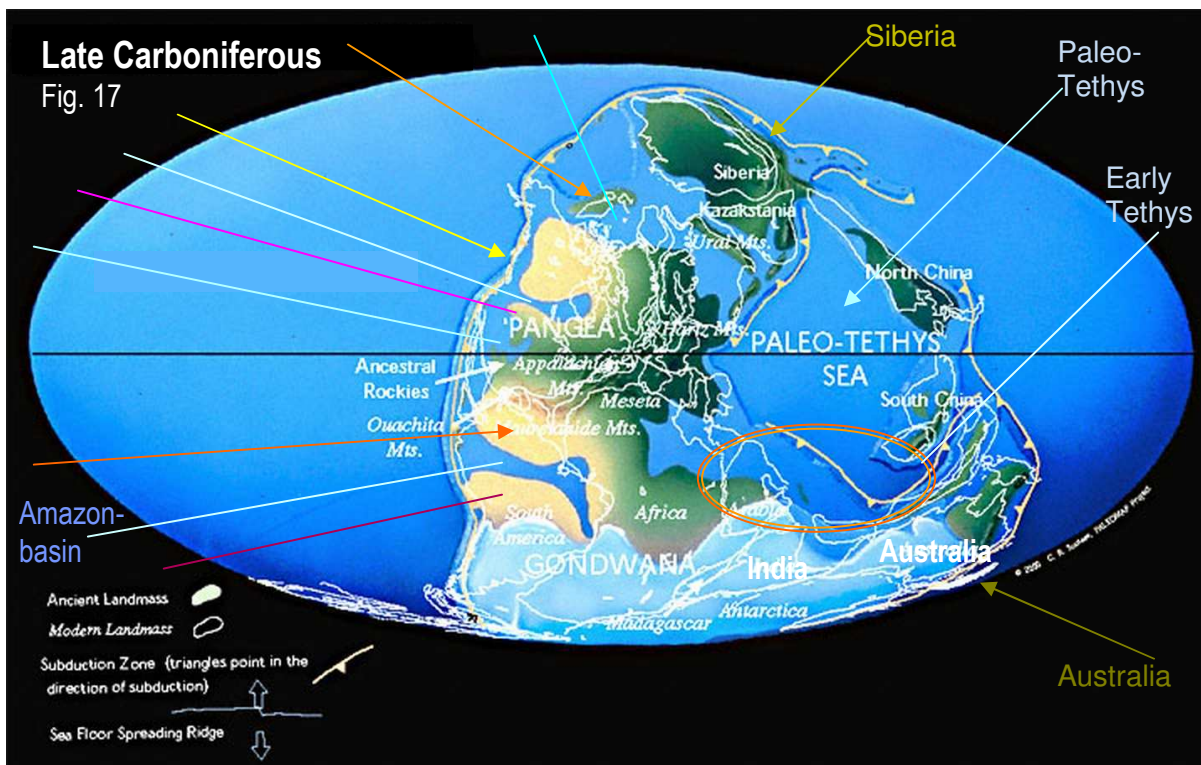


Fig.16: Human embryo 8th week. ○ = underneath was the blastopore lip = early Tethys Torso and limbs are not to be regarded here, but only the tissues belonging to the head. Same color of arrows on the picture above and below means correlation.



Comparing the Paleomap with embryonic stages of the human cranium, one can find morphological correspondences, implicating genetic inherence of the shapes. The rocks are a geologic cast of a disappeared global living being.



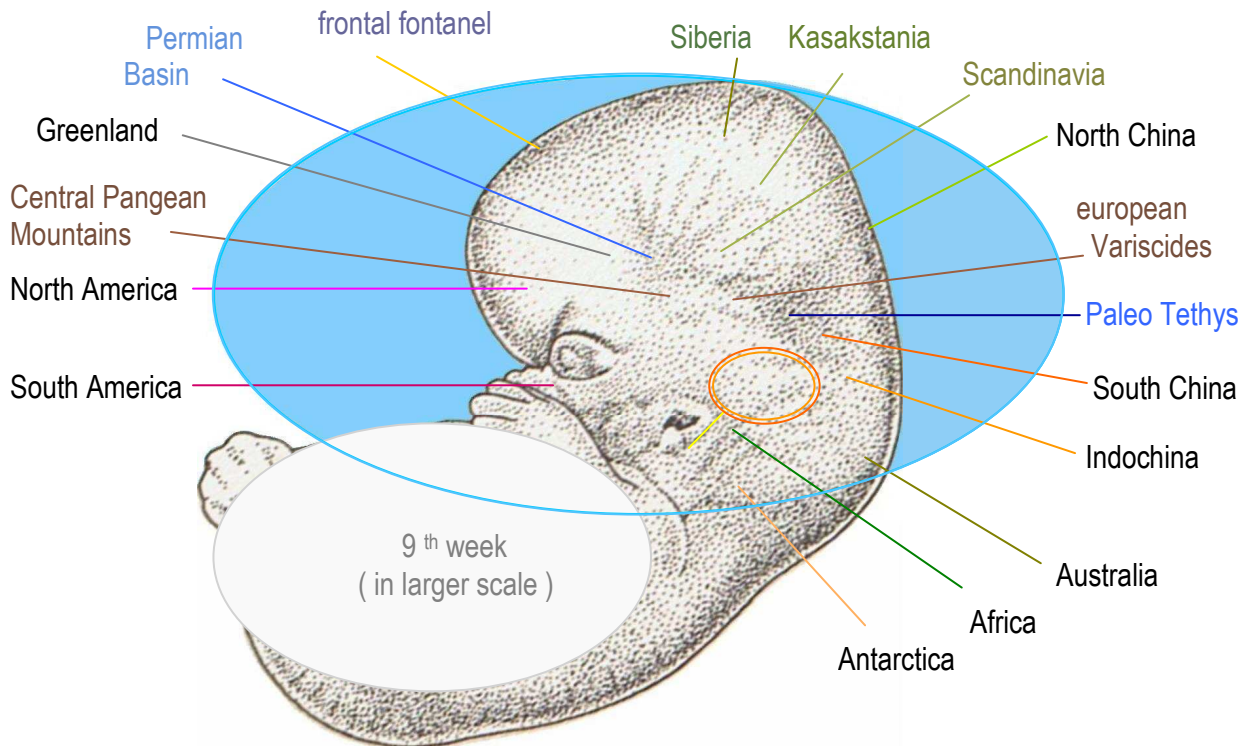

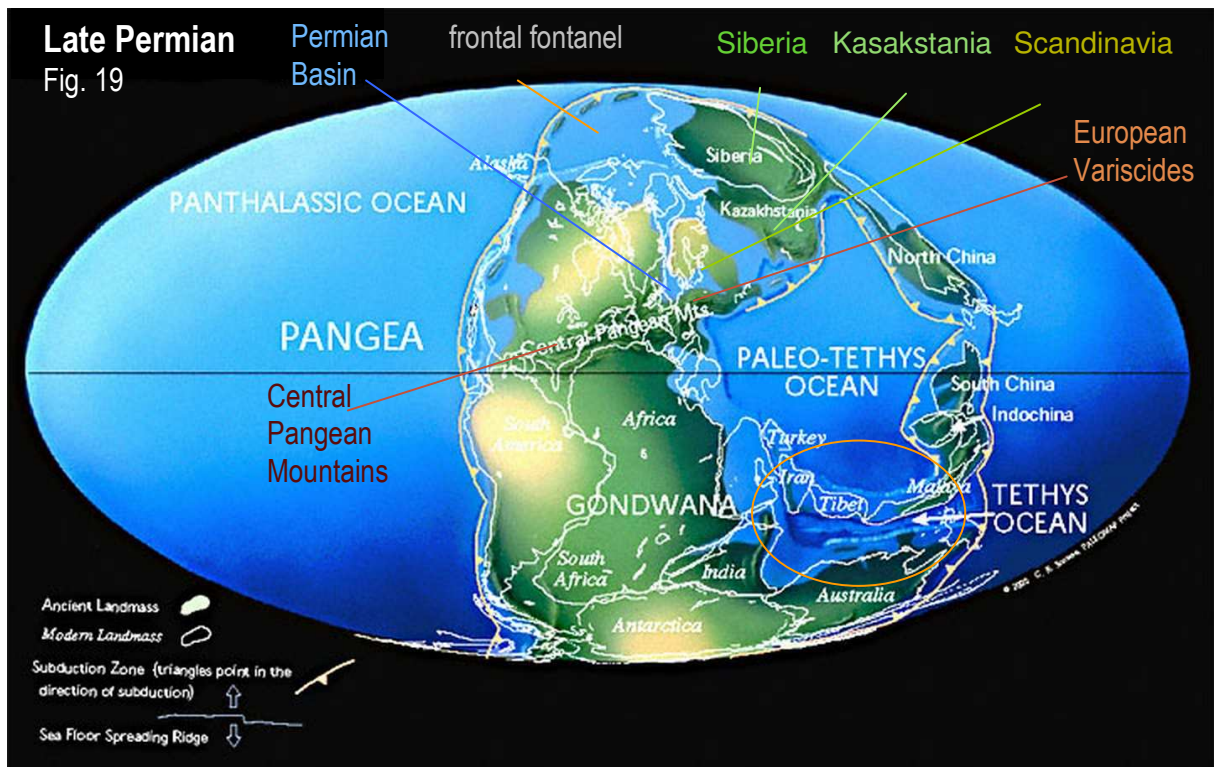


Fig. 18. Human embryo 9th week  = underneath was the blastopore lip = Tethys. Torso and limbs are not to be regarded here, but only the tissues belonging to the head.



The Panthalassic Ocean never existed. SCOTESE [19] did **not** say this, but his way to paint the borders of the early continents allows this own interpretation. The Pacific opened after the emerging of the moon.

A long evolutionary development needs to be performed before a cranium as the human one appears, yet the cognation with the earth is still visible and can be seen best on maps of the Paleozoic and Mesozoic before the continental drift tore apart the organically grown early continents.

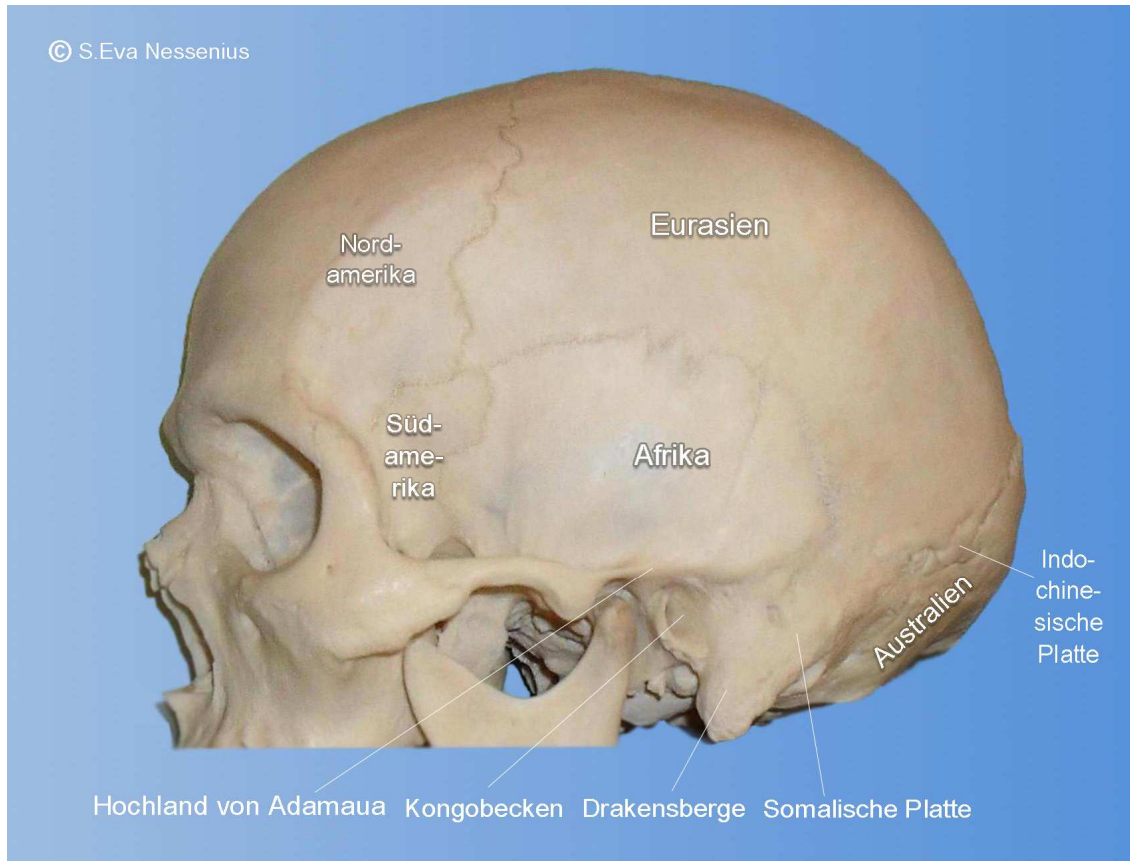


Fig. 20: Cranium of Homo sapiens. The skull-bones correspond to the continents.

The sutures between the skull-bones correspond to the fissures in the Pangaea torn open by the motion of the moon under the earth-surface and the following earth-expansion (discussed later in chapter 4.2.). These weak zones must have existed before like predetermined breaking-points, in this case breaking-lines.

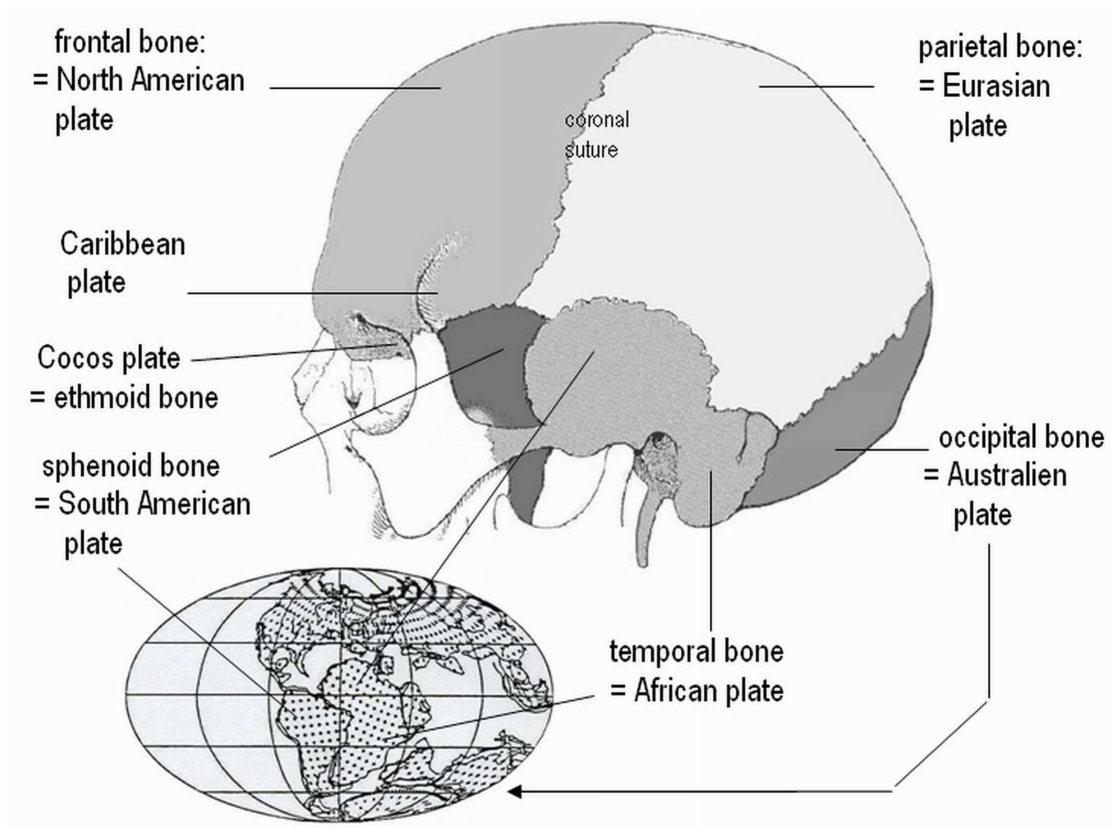


Fig. 21, 22: The human skull-bones are comparable with the continents in Jurassic.

In the human cranium the bones are paired like every part of the skeleton and nervous system of the vertebrates as Bilateria. In the Precambrian, when the planet-embryo grew, evolution was on an ancient stage where there were no symmetrical organs yet. Therefore the earth has the same shapes unpaired. The tissue where the vertebrate-embryo develops the eye under the skin is in correspondence to the area on earth where the moon originated and emerged (comp. fig. 8, 9, 11, 16 and 18).



Fig. 23: Collage from an artist.

This is an unexpected phenomenon. Biogenic planet-formation is the natural-scientific explanation. It cannot be proven but it can be seen macroscopically.

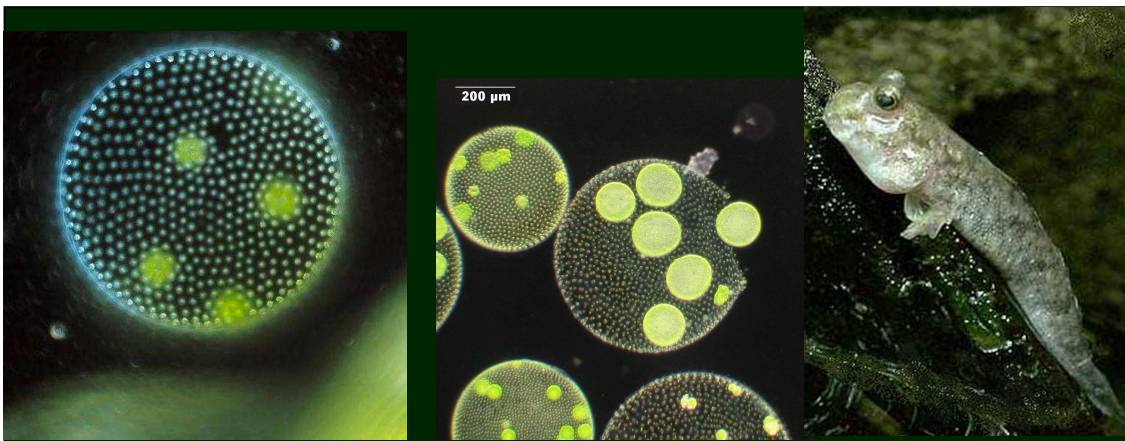


Fig. 24: *Volvox aurea*      Fig. 25: *Volvox aurea* opening      Fig. 26: *Periophthalmus*

*Volvox* and *Periophthalmus* are symbols for earth-formation and origin of the moon. *Volvox aurea* and *Volvox globator* are rotating spherical colonies of eukaryote algae on the ancient evolutionary stage of flagellates connected with jelly, bearing daughter-colonies growing inside. When daughter-colonies are mature the mother-colony opens, the descendants come out and leave. After opening the mother-colony dies, like the planet-embryo of the earth died after the emerging of the moon.

*Periophthalmus* is performing the transition from aquatic to terrestrial life in the Neozoic other fishes performed in Devonian and Carboniferous becoming amphibians and then reptiles. In Permian under dramatic life-conditions with global temperatures over 24°C lakes dried out and oceans were polluted by anoxia events. Many species died out. *Periophthalmus* makes this transition today, and its eyes are almost coming out of its head, which remembers me to the moon coming out of the earth. On a superficial level these phenomena can be regarded as analogies, but going deeper into the matter of genetic inherence of animals from the planet-embryo one can recognize some kind of homology in these morphologic developments. For an animal like this looking over the water surface is an evolutionary advantage, but why could the species realize this character? It had the sleeping genes prepared from his ancestral being, the Precambrian planet-embryo, in its genome.

## 4. Discussion

### 4. 1. Morphological correspondences

Although there is evidence on the level of macroscopic sight, the coherence can not be proven. It is impossible to find fossils of these stem-cells, because in the hot phases most of the sediments got melted and converted to magma or metamorphic rocks and the traces got destroyed.

The Edicara-Fauna in Australia is precious because it is exceptional to find fossils of that age, but the question if they contained the specific sleeping genes or if others did, cannot be answered, because it can not be recapitulated any more. Most of the ancestral beings have died out and it is most unlikely to find fossils with a DNA evaluable for this purpose. The only trace is the vertebral cranium in its high stage of evolutionary development in the human being. The other vertebrate craniums consist of the same elements in reduced variations. The craniums of vertebrate embryos still have the spherical forms and they loose it during the differentiation for their specialisations. Sometimes in animal-ontogenesis progressive evolutionary developments go backwards again, in case the specialisations are reductions. The seemingly highest developed character in evolution, the spherical human cranium, is a primordial embryonic form [20, 21].

#### 4. 2. Subduction versus earth expansion

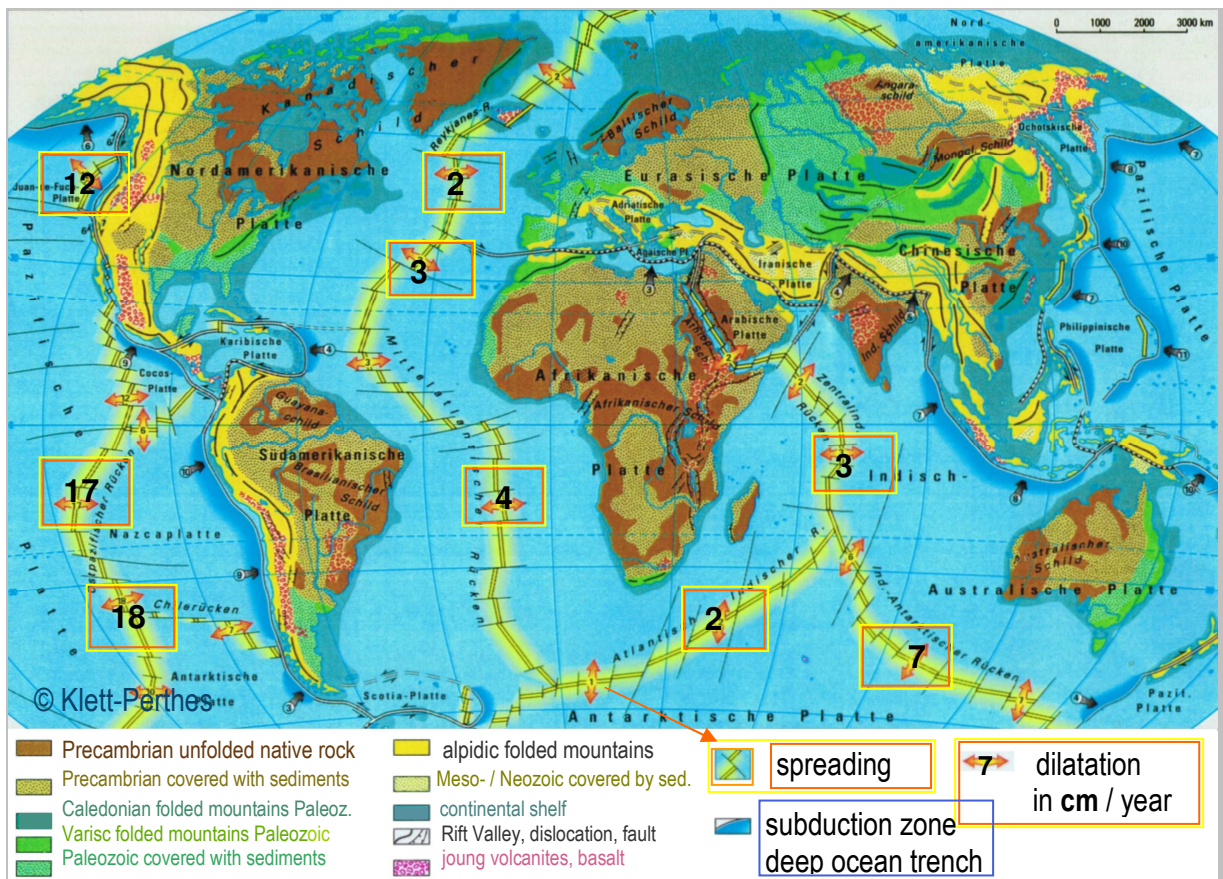


Fig. 27: Dilatation velocities in centimetres per year at the mid-ocean-ridges.



Fig. 28: The earth expansion began after the emerging of the moon in Permian.

Discussions about earth expansion were not successful, because expansionists denied the proven process of subduction. Ignoring this fundamental finding of modern geosciences they put themselves in an unacceptable position. Their second problem is that they are not in agreement with each other about the question, if an expanding earth gains mass or not. Those who say, it would be gaining mass, have difficulties in giving a reason. Those who say, it would not gain mass, have the problem that a smaller earth with an equal mass must have had gravity forces not allowing big terrestrial animals to live there.

The problem can be solved by the hypothesis of biogenic planet-formation: An early earth consisting of hydrocolloids, marine microorganisms, biogenic sediments, biofilms and products of biomineralisation cannot be small. It must be voluminous. When the radiation of the sun increases like in Permian, water evaporates from the young watery lithosphere because of heat and is driven out from the interior by pressure. The volume of the earthly substance shrinks, as the water goes up as water-vapour into the atmosphere. When biomass is burned, the ashes are left over. Heated mineral-substance turns into magma, while the dried lithosphere forms an isolating crust. The concentrated masses in the interior are under pressure. Where a local release of pressure initiates the origin of plumes, the volume expands without increase of mass. Plumes are not only the reason for hot-spot volcanism. As there are very long fissure-volcanoes at the Rift-Valleys there must be very long fissure-plumes as well.

In Carboniferous the earth-density was relatively low due to the high water-content. In Permian 98% of all species died out under catastrophic conditions. The density became temporarily high and the volume decreased. In Triassic the density decreased again due to the plumes, as the nuclear chain reactions in the interior continued producing heat. The Rift Valleys were torn open by convection-currents again and again. Each time the release of pressure caused new fissure-plumes going up, the driving forces of expansion.

“The dual geospheres view brings the importance of hydrogen into focus. If the earth primordially was entirely dominated by hydrogen, the gradual escape of hydrogen to space would have led to the oxidized carapace (crust; lithosphere) ..., while leaving the interior still hydrogen-dominated. ... To understand why hydrogen is so important, one must know that hydrogen nuclei (without electrons) under mantle-depth pressures are able to penetrate metal atoms and thus transmute and densify them. Pressure reduction leads to escape of hydrogen and de-densification. ... Density changes with consequential volume changes at sub-crustal levels can be set in motion by...” (HUNT, C. W.: Dual geospheres of the expanding hydric earth. 2008) [17].

Many geoscientists cannot agree with HUNT in each detail, because denying subduction is not acceptable. Some investigation results are still worth being taken notice of, as they are relevant for planetary science. Expansionists are searching for explanations for an increase of mass. However it is unnecessary

to decide, how the volume of the earth-mantle increased. The geological ages of ocean-floors and directions and velocities of the plate-movement leave no doubt about expansion as a factum.

The Austrian geologist Ampherer, Wegener's friend, had suggested the origin of the moon as cause for the continental-drift. They could not complete their research, because the ages of ocean-floors were still unknown and therefore the opening, the moon came out, could not be localised. On figure 8 and 9 in this publication this region is localised precisely. The vacated spaces left by the moon got filled. This was the beginning of subduction and the beginning of earth-expansion. There is no point in discussing, if there is expansion "or" subduction. They both have the same reason and starting basis. Both processes are perfectly compatible if expansion is seen in the hot phases and subduction compensates a slowed down dilatation only in the cold phases of earth-history.

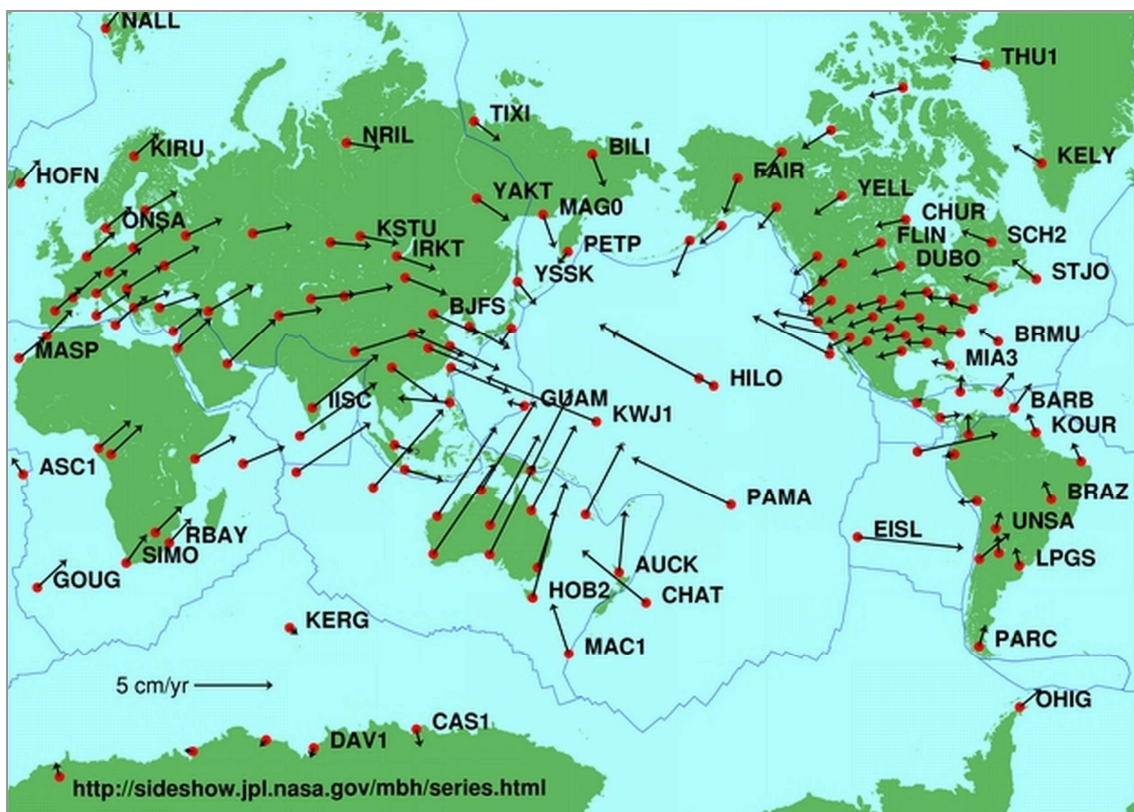


Fig. 29: Global plate motion measured by GPS devices.

Images like fig. 28 are most deceiving, because it is not the number of arrows, that shows the velocity of the plates, but it is their length. In this figure there are many short arrows close to each other pointing in the same direction, provoking the optical illusion, that the Pacific would become smaller. There are six arrows drawn in Australia behind each other, so that their lengths get summarised unconsciously.

Actually the arrows from the points HILO, PAMA, EISL and KWJ1 showing the dilatation velocity of the east pacific rise are longer. Although on opposite edges of the plates subduction is happening simultaneously, the Pacific ocean-floor is expanding. Holocene is a relatively warm part of Pleistocene, which is a cold age. In hot phases there was more dilatation and the subduction could not compensate the increase of volume.

For Geologists it is a question if the time-intervals between hot phases are in correlation with sun's orbit around the galactic centre or other astronomical factors like close ranks between the sun and neighbour stars. This needs to be answered by the Astronomers. Acting on the assumption that tectonic plates have a constant velocity since the beginning of their motion, not considering an oscillation of velocity due to the hot and cold phases, and then calculating the time by measuring distances can lead into circle-conclusions. All released movements slow down meeting resistances, in this case at subduction-zones. Therefore the drift must have gone faster before. An oscillation of expansion-processes is not yet considered by the expansionists themselves, as they need to integrate the findings about hot phases [15] in their research. The year-numbers in geological time-scales are still hypothetical and can be rendered precisely, as soon as Astronomers can give exact answers to these questions. This is important, because after correcting the geological time-scale the reversal of the earth's magnetic field can turn out to be in a time-correlation with the Milankovic-cycles.

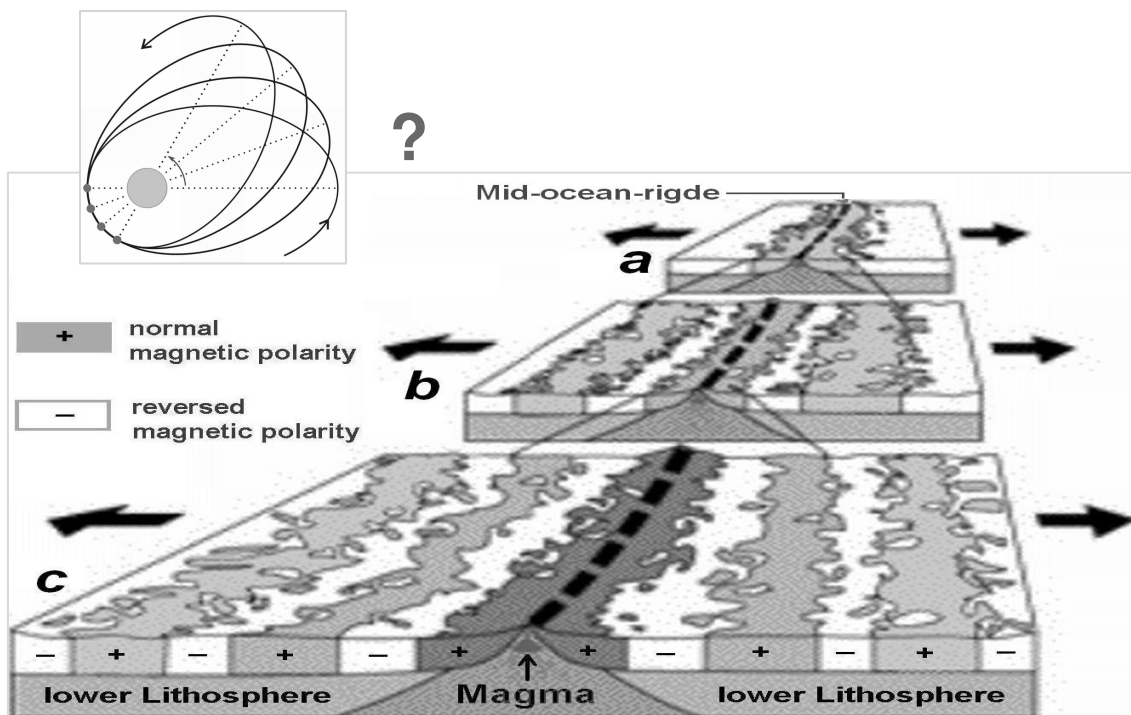


Fig. 30: Symmetrical ocean-floor-basalts show repeated changes of magnetic polarity.



The reversal of the earth's magnetic field is interesting for the geological age dating. The intervals seem to vary from 150.000 - 300.000 years with an average of 250.000. An apsidal cycle is 21.000 years x 12 = 252.000. One platonic year (equinox precession) is 25.700 years x 10 = 257.000 years. The magnetic field gets instable and reduced nine times, each time it recovers again. At the tenth time it reverses. Therefore I propose: During 12 apsidal-cycles the earth-axis is only once in a certain position due to equinox precession, which might have synergistic effects. Centrifugal forces and resonance-effects from repetitions cause an escalation. At the intersection point of 10 equinox-precessions with 12 perihelion precessions a synergistic effect occurs provoking the complete turn-around of the geodynamo in which convecting and electrically conducting fluids generating the magnetic field.

In the same way as a planet performs a perihelion-cycle around the sun, the sun also performs an elliptic cycle around the galactic centre. If the radiation of the sun varies at a certain point of its orbit is an interesting question. Astronomers and planetary scientists should scrutinize this and give clarity to the geologists, who have given up on this question before coherences between sea-floor-spreading and the possibility of a varying velocity of the continental-drift with cold and hot phases came into consideration. If the hot phases really depend from the suns orbit or other calculable astronomic factors, the geological time-scale can be reworked maybe with the result that the reversal of the magnetic field just turns out to happen every 252.000 years. The long pause between today and the last reversal can be an artefact caused by slow-motion and stagnancy of the plates in Pleistocene. When sea-floor-spreading is not happening at all for a certain period, how can we find volcanic material on which reversals are recorded?

#### **4. 3. Emerging of the moon in Permian**

An origin of the moon in Permian is consistent with its geological qualities. Planetary scientists need to succeed in finding new calculations for increasing and decreasing velocities of earth-rotation and the moon's movement away from earth starting with a voluminous biogenic planet-formation. Geologic observations confirm the existence of morphological correspondences.

#### **4. 4. Hydrous accretion and biogenic formation of primordial continents**

In the conference "Planet Formation and Evolution 2012" HOGERHEIJDE [22] said in a conversation: "The pressures in protoplanetary discs are too low to allow the existence of liquid water". The measurement-data for laboratory experiments are from discs in outer space, because the disc our solar system evolved from does not exist any more. They are comparable, but each one has its own properties. The newly suggested idea of hydrous accretion based on secondary aerosols and hydrous silicon shielded by icy aggregations around a rotating cloud needs to be tested in laboratory experiments. The simulations

generating turbulences to find areas of pressure sufficient for the hypothetical accretions can also be modified to find habitable areas in the interior of huge atmospheric orbs. In the Miller-Urey-Experiment even in gaseous water-vapour enriched with other compounds amino-acids form. In a rotating orb the night-side has the function of a condenser. If someone succeeds in proving this idea experimentally, the chemical evolution can begin from there on.

## 5. Conclusions

This hypothesis can solve problems like the question how mineral-elements in protoplanetary discs stick together and form growing globes with diameters of many thousand kilometres: Aerosols dissolved in condensing water-nebula become metabolites for the development of extremophile Protobionta, archaea- and bacteria-colonies in a global living organism, the Precambrian planet-embryo, held together by hydrous silicon as matrix for proteins [5]. Icy surfaces and water-clouds protect early life-processes from weak radiation of the young sun.

The cool biogenic planet formation is a new basis to understand the earth-expansion. Dilatation and subduction are compatible, both initiated by the emerging of the moon.

Comparing morphological characters in living beings showing their derivation from a living planet-embryo, we can say that the human beings as well as the animals, fungi and plants are not only children of the earth in some poetical sense but also its biologic descendants in the sense of modern genetics and planetary science.

In case details need to be improved, the idea of arranging the known processes in a different succession remains a useful innovation enhancing the progress in the research about planet formation. This can be a solution to the problems we have been working on in the passed decades.

## References

- [9] BAINS, William: Many chemistries could be used to build living systems. In: *Astrobiology* (4) 2, 137-167, 2004.
- [14] BRUNNER, Eike: *Biological Materials of marine origin*. Springer-Verlag, 2010.
- [13] CAMPBELL, Neil / REECE, Jane: *Biologie*. Spektrum 2003.
- [15] COURTILLOT, Vincent E. / RENNE, Paul R.: *Comptes Rendus Geoscience* 335(1), 113-140, 2003.
- [7] DOBSON, Christopher M.: Atmospheric aerosols as prebiotic chemical reactors. In: *Proceedings of the National Academy of Science of the USA*, 11864–11868, vol. 97, no. 22, October 24, 2000

- [6] FISCHER, Franz / TROPSCH, Hans: Über die direkte Synthese von Erdöl-Kohlenwasserstoffen bei gewöhnlichem Druck. In: Berichte der deutschen chemischen Gesellschaft (A and B Series). 59, 1926, 830–831.
- [11] KAYSER, Rainer: Aliens aus Salzsäure und Silizium. Tagesspiegel, June 4, 2008.
- [22] KRISTENSEN, L.E. / HOGERHEIJDE, Michiel et al.: Water in star-forming regions with Herschel (WISH). II. Evolution of 557 GHz 110-101 emission in low mass proto-stars. In: Astronomy & Astrophysics, Volume 542, id. A8, 2012.
- [17] HUNT, C.W.: Dual Geospheres of the Expanding Hydric Earth. 2008. KRÖGER et al.: PNAS USA 1997, 14133 – 14138, 2000. KRÖGER et al.: J. Biol. Chem. 276. 26066 – 26070, 2001. KUHN-SCHNYDER, E. / RIEBER, H.: Paläozoologie, Stuttgart 1984.
- [18] LARSON, Roger L.: Geological consequences of superplumes. In: Geology, v. 19, p. 963-966, October, 1991. MARGULIS, Lynn: Symbiosis in Cell Evolution. Massachusetts 1993.
- [3] MEINERHENRICH, Uwe: Identification of diamino-acids in the Murchison Meteorite. In: PNAS, vol. 101, no. 25, 9182-9186, June 22, 2004.
- [2] Miller, Stanley L.: Production of amino acids under possible primitive earth conditions. In: Science, new series, 117 (3046): 528–529, May 15, 1953.
- NAGEL, Thorsten J., HOFFMANN, Elis, MÜNKER, Carsten: Generation of Eoarchean tonalite-trondhjemite-granodiorite series from thickened mafic arc crust. In: Geological Society of America, 2011.
- PEDERSEN, Karsten: About the Deep Biosphere Laboratory. 2007.
- [2] SALYK, Colette et al.: H<sub>2</sub>O and OH Gas in the Terrestrial Planet-forming Zones of Protoplanetary Disks. In: The Astrophysical Journal, Volume 676, Number 1, L49 – L52, March 6, 2008.
- SCHAD, Wolfgang: Die Vorgeburtlichkeit des Menschen. Stuttgart 1982.
- SCHAD, Wolfgang: Vom Leben im Lichtraum. In: Goetheanistische Naturwissenschaft Bd. 3, 42–49. 1983.
- [20] SCHAD, Wolfgang: Stauphänomene am menschlichen Knochenbau. In: Goetheanistische Naturwissenschaft, Bd. 4, 12–14. 1985.
- [21] SCHAD, Wolfgang: Gestaltmotive der fossilen Menschenformen. In: Goetheanistische Naturwissenschaft, Bd. 4, 119-130. 1985.
- SCHAD, Wolfgang: Evolution als Verständnisprinzip in Kosmos, Mensch und Natur. Stuttgart 2009.
- [10] SHAPIRO, R. / FEINBERG, G.: Possible forms of life in environments very different from the earth. Cambridge University Press, 165-172, 1995.
- [8] SCHIDLOWSKI, Manfred: Early Evolution of Life on Earth: Geological and Biogeochemical Evidence In: ZGW, Berlin 37, 4–5, 237-260, 2009.
- [12] SCHULZE-MAKUCH, Dirk / HOUTKOOPEL, J.M.: Possibilities for the detection of hydrogen peroxide-water based life on Mars by the Phoenix Lander. Planetary Space & Sciences, vol. 57, no. 4, p. 449-453, 2009.
- [19] SCOTESE, Christopher R.: Atlas of Earth History, Volume 1, Paleogeography, Paleomap Project, Arlington, Texas, 2001.

[16] STREIF, H. / BERNER, U: Klimafakten, 82–110, Hannover-Stuttgart 2001.

[1] VALLEY, John W., PECK, William H., KING, Elisabeth M., WILDE, Simon A.: A Cool Early Earth. In: *Geology* 30, 351-354, 2002.

[5] ZANGOOTE, S. / BJORKLUND, R. / ARWIN, H.: Protein adsorption in thermally oxidized porous silicon layers. Department of Physics and Measurement Technology, Laboratory of Applied Physics, 581-583. Linköping University, Sweden, 1998.

Links to publications listed above:

SALYK: <http://peggy.sue.as.utexas.edu/SIRTF/PAPERS/pap121.pub.pdf>

DOBSON: <http://www.pnas.org/content/97/22/11864.full.pdf+html>

MEINERHENRICH: <http://www.pnas.org/content/101/25/9182.full.pdf>

MILLER-UREY- Experiment: [http://glencoe.mcgraw-hill.com/sites/9834092339/student\\_view0/chapter26/animation\\_miller-urey\\_experiment.html](http://glencoe.mcgraw-hill.com/sites/9834092339/student_view0/chapter26/animation_miller-urey_experiment.html)

VALLEY: [http://www.geology.wisc.edu/zircon/cool\\_early/cool\\_early\\_home.html](http://www.geology.wisc.edu/zircon/cool_early/cool_early_home.html)

KAYSER: <http://www.tagesspiegel.de/wissen/ausserirdische-aliens-aus-saeure-und-silizium/1248726.html>

ZANGOOTE: <http://www.sciencedirect.com/science/article/pii/S0040609097010031>

SCHIDLOWSKI: <http://www.zgw-online.de/en/media/237-094.pdf>

BRUNNER: [http://books.google.de/books?hl=de&lr=&id=V-5qdziJIXAC&oi=fnd&pg=PR6&dq=BRUNNER,+Eike:+Biological+Materials+of+marine+origin.+Springer-Verlag,+2010&ots=NzW6EBbtm\\_&sig=Ndq9kMjSl\\_aUmigX0WVee8Lw6k#v=onepage&q&f=false](http://books.google.de/books?hl=de&lr=&id=V-5qdziJIXAC&oi=fnd&pg=PR6&dq=BRUNNER,+Eike:+Biological+Materials+of+marine+origin.+Springer-Verlag,+2010&ots=NzW6EBbtm_&sig=Ndq9kMjSl_aUmigX0WVee8Lw6k#v=onepage&q&f=false)

KRÖGER: <http://iabserv.biologie.uni-mainz.de/eng/349.php>

COURTILLOT: <http://www.sciencedirect.com/science/article/pii/S1631071303000063>

SCOTESE: <http://www.scotese.com/earth.htm>

HUNT: <http://earthk.com/Articles03.html>

LARSON: <http://geology.geoscienceworld.org/content/19/10/963.abstract?ck=nck>

## Picture Credits

- Fig. 1: Protoplanetary disc, ESO – Garching, public domain  
 Fig. 2: Primary and secondary aerosols, own picture  
 Fig. 3: Geologic time scale and Biodiversity, own picture, according Campbell 2003.  
 Fig. 4: The cycle of rocks, own picture  
 Fig. 5 and 6: Paleomap Scotese (2003): Carboniferous, Permian, licensed by Scotese.  
 Fig. 7: Time-correlations of mass-extinctions and flood-basalt-events.  
 Graphic: Courtillot / Renne: Comptes Rendus Geoscience 335(1) 2003  
 Fig. 8: Age of ocean floors, National Oceanic and Atmospheric Admin. Public domain  
 Fig. 9: Emerging of the moon. Scotese, Paleomap Permian with own inscriptions.  
 Fig. 10: World Ocean Floor. THARP / HEEZEN, 1999; licensed by Marie Tharp Maps  
 Fig. 11: Earth in Jurassic, licensed by Ronald Blakey  
 Fig. 12: Endosymbiosis and higher development, own picture  
 Fig. 13: Coelenterate  
 Fig. 14: Embryo of a cephalopod; with the agreement of the Grzimek Bildarchiv  
 Fig. 15: Cambrian trilobite  
 Fig. 16 and 18: Human Embryo. Pregnancy and Childbirth, Sheila Kitzinger, 1980  
 Fig. 17 and 19: Paleomap (2003): Late Carboniferous and Permian, licensed by Scotese  
 Fig. 20: Homo sapiens skull, own photo  
 Fig. 21: Position of the continents in Jurassic. Bild der Wissenschaft, November 1980  
 Fig. 22: Human skull bones; according to Faller 1980  
 Fig. 23: Collage, own picture  
 Fig. 24 and 26: Volvox aurea, licensed by the photographer Dr. Ralf Wagner  
 Fig. 25: Periophthalmus own photo  
 Fig. 27: Plate Tectonics and Geology, licensed by Klett-Perthes.  
 Fig. 28: Expanding Earth, licensed by Keith Wilson, Expanding Earth Knowledge Co.  
 Fig. 29: Global plate motion 2008, NASA, public domain  
 Fig. 30: Reversal of magnetic field in ocean-floor magnetite, public domain

Not all the right-owners of images could be found. If ownership of the rights gets proved, the honorary customary in the trade will be discharged afterwards.



S. Eva Nessenius was born in 1958 in Erlangen, Germany. At the University of Frankfurt am Main she studied biology, palaeontology, geography and geology. After passing her exam she studied goethean natural science in Stuttgart. In addition to her profession as biology and geography teacher she pursued multidisciplinary research participating in lectures about mineralogy at the University of Erlangen, about earth-history at the University of Heidelberg and planet-formation at the Max-Planck-Institute of Astronomy in Heidelberg.

Heidelberg, August 12 - 2012

*S. Eva Nessenius*