



Special relativity and steps towards general relativity: ϵ GR

(c) CC-BY-SA-3.0



GR: intro

1. spacetime = 4D (curved) pseudo-Riemannian manifold M with metric g



GR: intro

1. spacetime = 4D (curved) pseudo-Riemannian manifold M with metric g
2. \forall spacetime point $x \exists$ 4D Minkowski tangent space $T_x M$ at x

GR: intro

1. spacetime = 4D (curved) pseudo-Riemannian manifold M with metric g
2. \forall spacetime point $x \exists$ 4D Minkowski tangent space $T_x M$ at x
= vector space (e.g. 4-momentum vectors)

GR: intro

1. spacetime = 4D (curved) pseudo-Riemannian manifold M with metric \mathbf{g}
2. \forall spacetime point $\mathbf{x} \exists$ 4D Minkowski tangent space $T_{\mathbf{x}}M$ at \mathbf{x}
= vector space, $\mathbf{g} \Rightarrow$ lengths of vectors in $T_{\mathbf{x}}M$

GR: intro

1. spacetime = 4D (curved) pseudo-Riemannian manifold M with metric g
2. \forall spacetime point $x \ni$ 4D Minkowski tangent space $T_x M$ at x
= vector space, $g \Rightarrow$ lengths of vectors in $T_x M$
3. also, $\forall x \in M, \ni$ 4D Mink. cotangent space $T_x^* M$

GR: intro

1. spacetime = 4D (curved) pseudo-Riemannian manifold M with metric g
2. \forall spacetime point $x \ni$ 4D Minkowski tangent space $T_x M$ at x
= vector space, $g \Rightarrow$ lengths of vectors in $T_x M$
3. also, $\forall x \in M, \ni$ 4D Mink. cotangent space $T_x^* M$
= dual vector space (think: contour map, gradients)

GR: intro

1. spacetime = 4D (curved) pseudo-Riemannian manifold M with metric \mathbf{g}
2. \forall spacetime point $\mathbf{x} \ni$ 4D Minkowski tangent space $T_{\mathbf{x}}M$ at \mathbf{x}
= vector space, $\mathbf{g} \Rightarrow$ lengths of vectors in $T_{\mathbf{x}}M$
3. also, $\forall \mathbf{x} \in M, \ni$ 4D Mink. cotangent space $T_{\mathbf{x}}^*M$
= space of one-forms, $\mathbf{g}^{-1} \Rightarrow$ "lengths"

GR: intro

1. spacetime = 4D (curved) pseudo-Riemannian manifold M with metric \mathbf{g}
 2. \forall spacetime point $\mathbf{x} \ni$ 4D Minkowski tangent space $T_{\mathbf{x}}M$ at \mathbf{x}
= vector space, $\mathbf{g} \Rightarrow$ lengths of vectors in $T_{\mathbf{x}}M$
 3. also, $\forall \mathbf{x} \in M, \ni$ 4D Mink. cotangent space $T_{\mathbf{x}}^*M$
= space of one-forms, $\mathbf{g}^{-1} \Rightarrow$ "lengths"
- duality in a basis of $T_{\mathbf{x}}M$ and a basis of $T_{\mathbf{x}}^*M$ usually defined using δ_{ν}^{μ}

GR: intro

1. spacetime = 4D (curved) pseudo-Riemannian manifold M with metric \mathbf{g}
 2. \forall spacetime point $\mathbf{x} \ni$ 4D Minkowski tangent space $T_{\mathbf{x}}M$ at \mathbf{x}
= vector space, $\mathbf{g} \Rightarrow$ lengths of vectors in $T_{\mathbf{x}}M$
 3. also, $\forall \mathbf{x} \in M, \ni$ 4D Mink. cotangent space $T_{\mathbf{x}}^*M$
= space of one-forms, $\mathbf{g}^{-1} \Rightarrow$ "lengths"
- 2+3. vector–one-form duality in a basis: δ_{ν}^{μ}

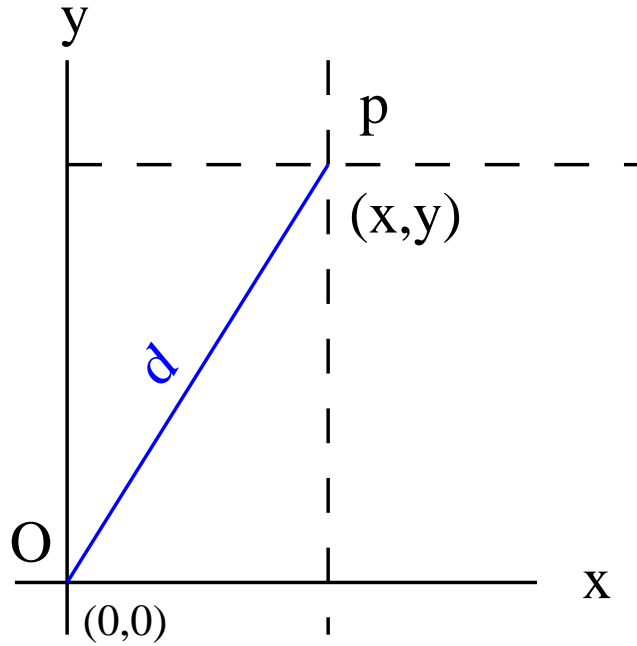
GR: intro

1. spacetime = 4D (curved) pseudo-Riemannian manifold M with metric \mathbf{g}
2. \forall spacetime point $\mathbf{x} \ni$ 4D Minkowski tangent space $T_{\mathbf{x}}M$ at \mathbf{x}
= vector space, $\mathbf{g} \Rightarrow$ lengths of vectors in $T_{\mathbf{x}}M$
3. also, $\forall \mathbf{x} \in M, \ni$ 4D Mink. cotangent space $T_{\mathbf{x}}^*M$
= space of one-forms, $\mathbf{g}^{-1} \Rightarrow$ "lengths"
- 2+3. vector–one-form duality in a basis: δ_{ν}^{μ}
4. w:Levi-Civita connection \Leftarrow metric

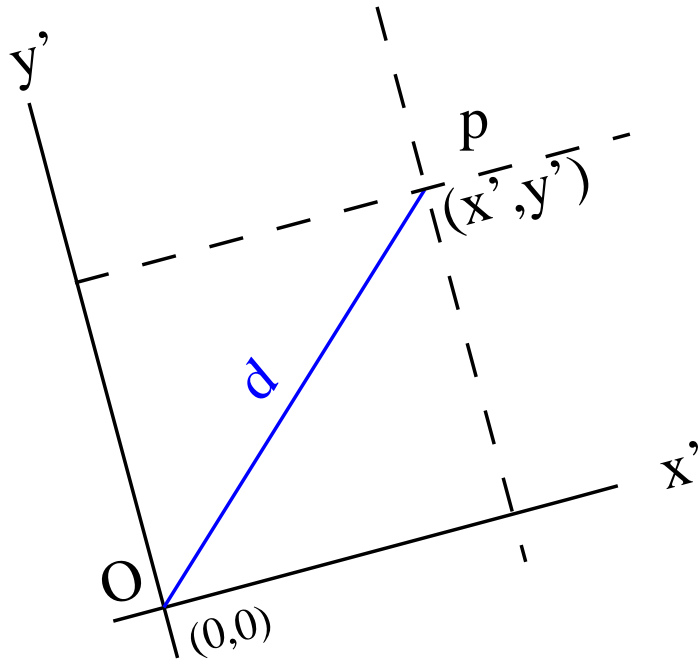
GR: intro

1. spacetime = 4D (curved) pseudo-Riemannian manifold M with metric \mathbf{g}
2. \forall spacetime point $\mathbf{x} \ni$ 4D Minkowski tangent space $T_{\mathbf{x}}M$ at \mathbf{x}
= vector space, $\mathbf{g} \Rightarrow$ lengths of vectors in $T_{\mathbf{x}}M$
3. also, $\forall \mathbf{x} \in M, \ni$ 4D Mink. cotangent space $T_{\mathbf{x}}^*M$
= space of one-forms, $\mathbf{g}^{-1} \Rightarrow$ "lengths"
- 2+3. vector–one-form duality in a basis: δ_{ν}^{μ}
4. w:Levi-Civita connection \Leftarrow metric
5. metric \Leftarrow Einstein field equations

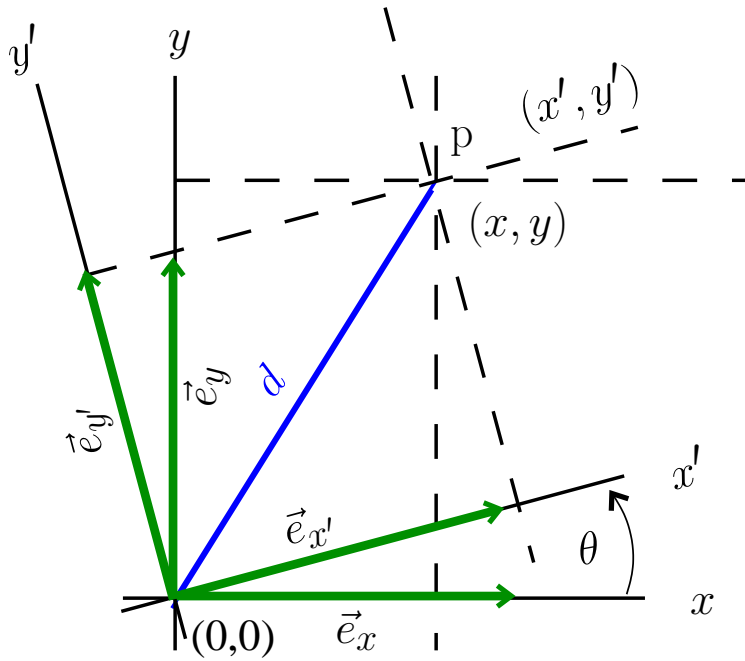
GR: coordinate transformations



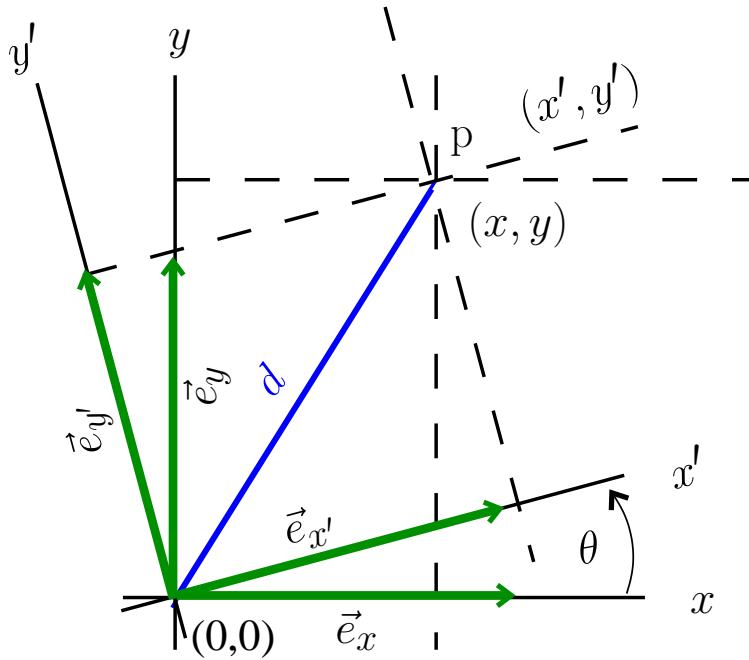
GR: coordinate transformations



GR: coordinate transformations



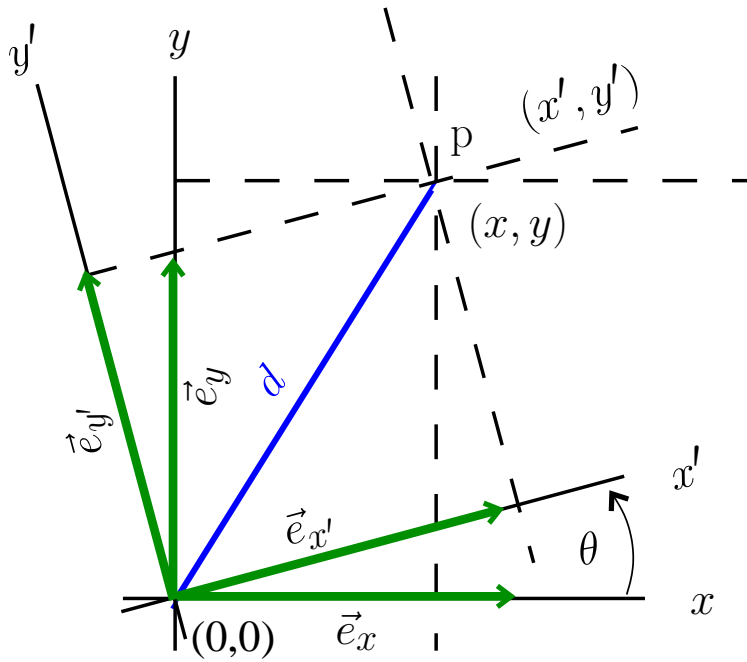
GR: coordinate transformations



$$\begin{pmatrix} x' \\ y' \end{pmatrix} = \begin{pmatrix} \cos \theta & \sin \theta \\ -\sin \theta & \cos \theta \end{pmatrix} \begin{pmatrix} x \\ y \end{pmatrix}$$



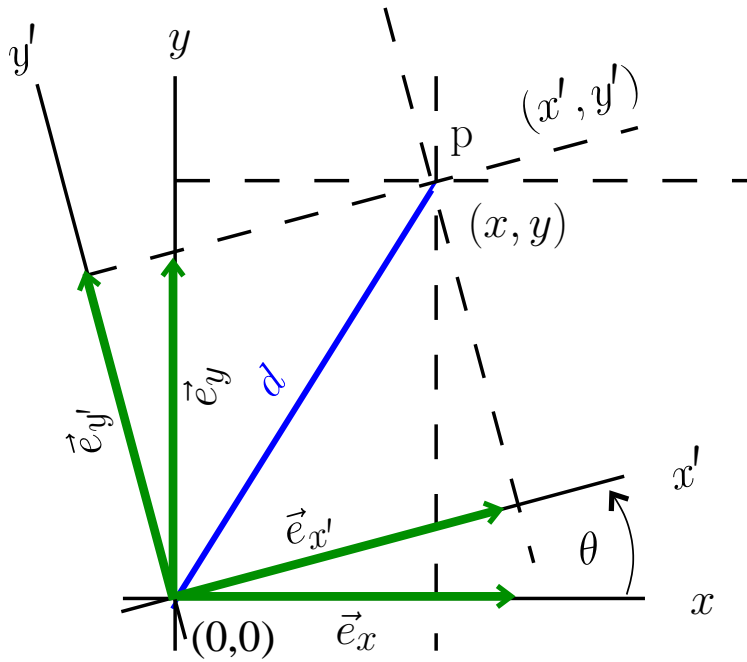
GR: coordinate transformations



$$\begin{pmatrix} x' \\ y' \end{pmatrix} = \Lambda \begin{pmatrix} x \\ y \end{pmatrix}$$



GR: coordinate transformations

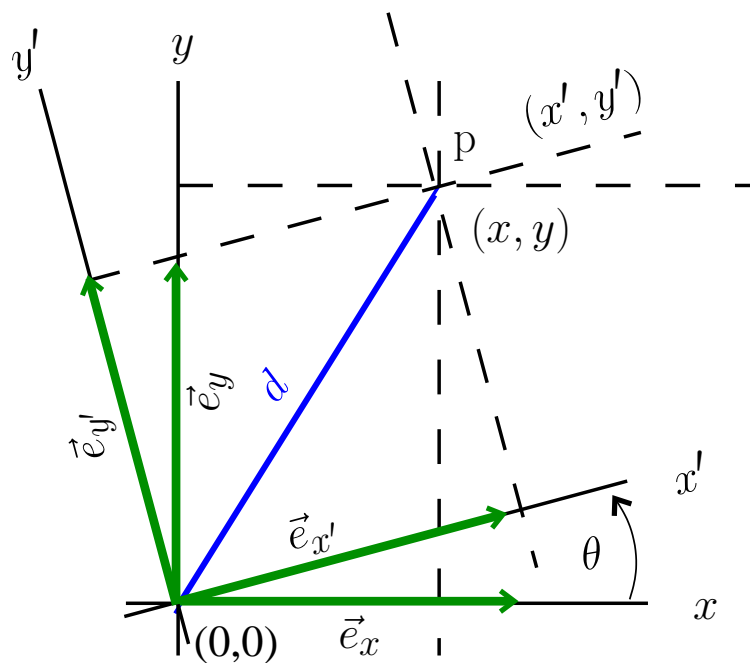


but

$$\begin{pmatrix} \cos \theta \\ \sin \theta \end{pmatrix} = \begin{pmatrix} \cos \theta & -\sin \theta \\ \sin \theta & \cos \theta \end{pmatrix} \begin{pmatrix} 1 \\ 0 \end{pmatrix}$$



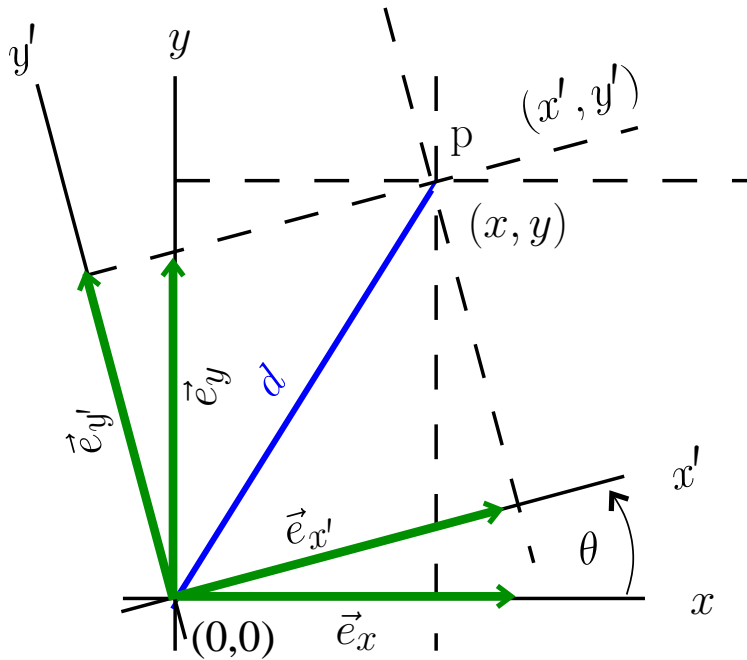
GR: coordinate transformations



$$\begin{pmatrix} \cos \theta \\ \sin \theta \end{pmatrix} = \begin{pmatrix} \cos \theta & -\sin \theta \\ \sin \theta & \cos \theta \end{pmatrix} \begin{pmatrix} 1 \\ 0 \end{pmatrix} + \begin{pmatrix} \cos \theta & -\sin \theta \\ \sin \theta & \cos \theta \end{pmatrix} \begin{pmatrix} 0 \\ 1 \end{pmatrix}$$



GR: coordinate transformations



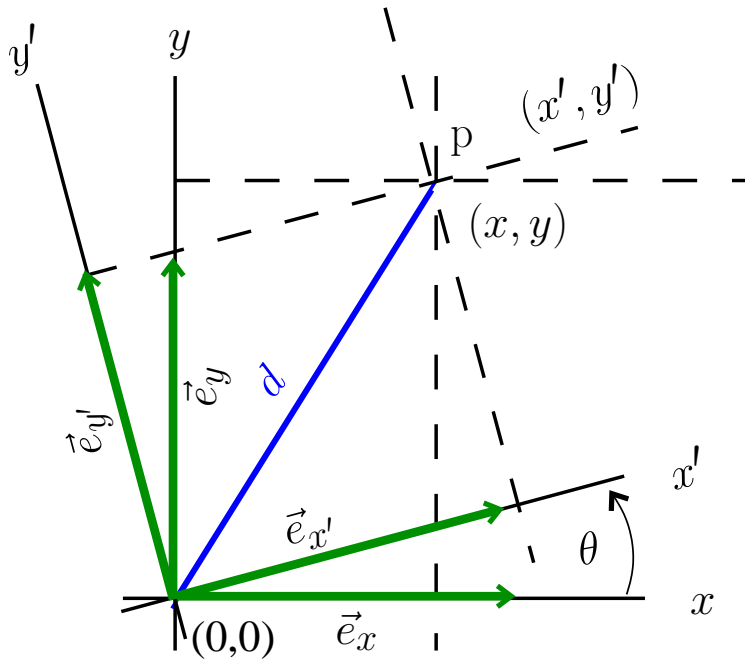
$$\vec{e}_{x'} = \begin{pmatrix} \cos \theta & -\sin \theta \\ \sin \theta & \cos \theta \end{pmatrix} \vec{e}_x + \begin{pmatrix} \cos \theta & -\sin \theta \\ \sin \theta & \cos \theta \end{pmatrix} \vec{e}_y$$



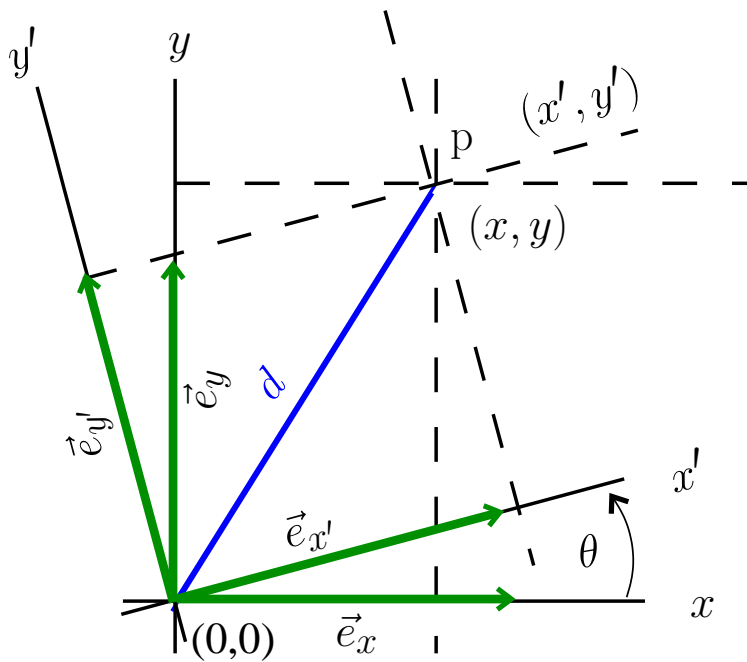
GR: coordinate transformations



$$\vec{e}_{x'} = \Lambda_{x'}^x \vec{e}_x + \Lambda_{x'}^y \vec{e}_y$$



GR: coordinate transformations

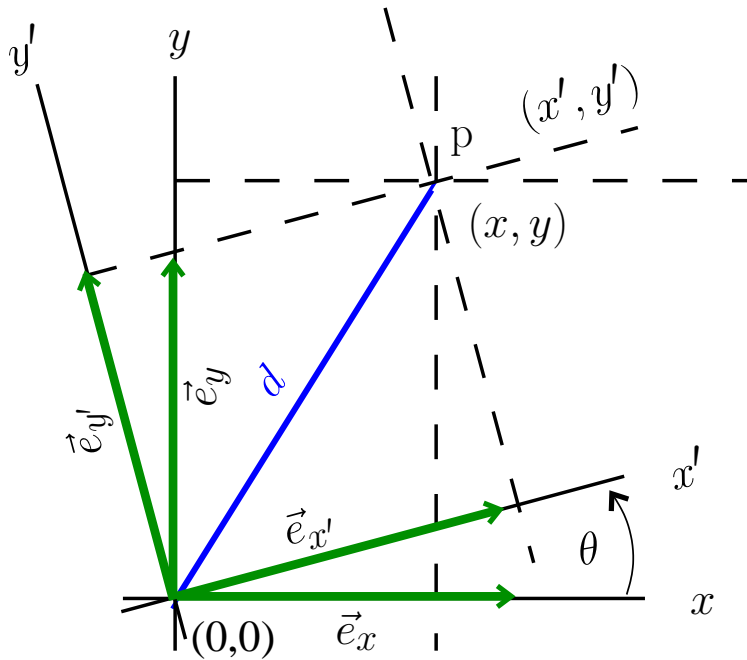


also:

$$\begin{pmatrix} -\sin \theta \\ \cos \theta \end{pmatrix} = \begin{pmatrix} \cos \theta & -\sin \theta \\ \sin \theta & \cos \theta \end{pmatrix} \begin{pmatrix} 1 \\ 0 \end{pmatrix} + \begin{pmatrix} \cos \theta & -\sin \theta \\ \sin \theta & \cos \theta \end{pmatrix} \begin{pmatrix} 0 \\ 1 \end{pmatrix}$$



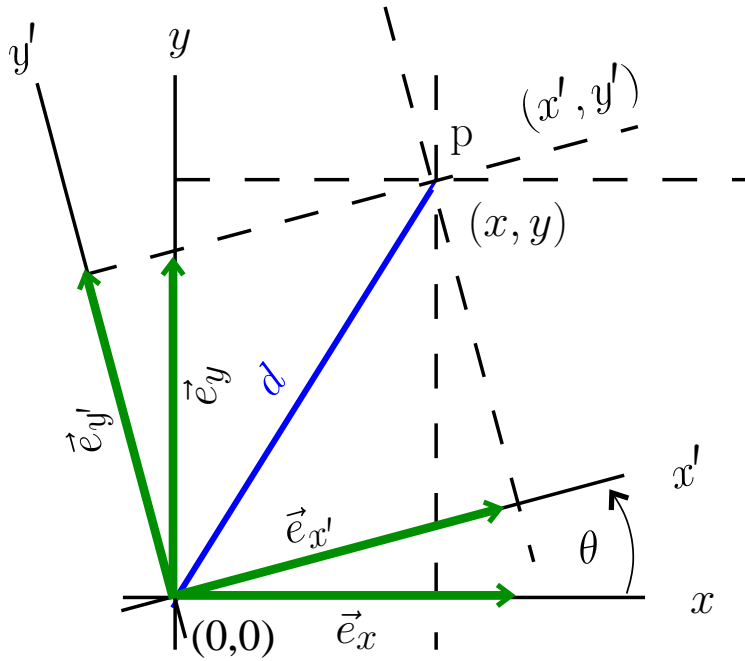
GR: coordinate transformations



$$\vec{e}_{y'} = \begin{pmatrix} \cos \theta & -\sin \theta \\ \sin \theta & \cos \theta \end{pmatrix} \vec{e}_x + \begin{pmatrix} \cos \theta & -\sin \theta \\ \sin \theta & \cos \theta \end{pmatrix} \vec{e}_y$$



GR: coordinate transformations



summary:

$$\vec{e}_{x'} = \Lambda_{x'}^x \vec{e}_x + \Lambda_{x'}^y \vec{e}_y,$$

$$\vec{e}_{y'} = \Lambda_{y'}^x \vec{e}_x + \Lambda_{y'}^y \vec{e}_y,$$

where $\Lambda_{\beta'}^{\alpha}$:= element

of inverse of $\Lambda_{\beta}^{\alpha'}$,

$$\begin{pmatrix} x' \\ y' \end{pmatrix} = \Lambda \begin{pmatrix} x \\ y \end{pmatrix}$$



GR: coordinate transformations

$$\begin{aligned}\vec{e}_{x'} &= \Lambda_{x'}^x \vec{e}_x + \Lambda_{x'}^y \vec{e}_y, \\ \vec{e}_{y'} &= \Lambda_{y'}^x \vec{e}_x + \Lambda_{y'}^y \vec{e}_y,\end{aligned}\quad \vec{p} \rightarrow_{\mathcal{O}'} \begin{pmatrix} x' \\ y' \end{pmatrix} = \Lambda \begin{pmatrix} x \\ y \end{pmatrix}$$

GR: coordinate transformations

$$\begin{aligned}\vec{e}_{x'} &= \Lambda_{x'}^x \vec{e}_x + \Lambda_{x'}^y \vec{e}_y, \\ \vec{e}_{y'} &= \Lambda_{y'}^x \vec{e}_x + \Lambda_{y'}^y \vec{e}_y, \\ \vec{p} &\rightarrow_{\mathcal{O}'} \begin{pmatrix} x' \\ y' \end{pmatrix} = \Lambda \begin{pmatrix} x \\ y \end{pmatrix}\end{aligned}$$

$$\vec{p} = \sum_i p^i \vec{e}_i$$

GR: coordinate transformations

$$\begin{aligned}\vec{e}_{x'} &= \Lambda_{x'}^x \vec{e}_x + \Lambda_{x'}^y \vec{e}_y, \\ \vec{e}_{y'} &= \Lambda_{y'}^x \vec{e}_x + \Lambda_{y'}^y \vec{e}_y, \end{aligned} \quad \vec{p} \rightarrow_{\mathcal{O}'} \begin{pmatrix} x' \\ y' \end{pmatrix} = \Lambda \begin{pmatrix} x \\ y \end{pmatrix}$$

$$\vec{p} = p^i \vec{e}_i \quad (\text{w:Einstein summation})$$

GR: coordinate transformations

$$\begin{aligned}\vec{e}_{x'} &= \Lambda_{x'}^x \vec{e}_x + \Lambda_{x'}^y \vec{e}_y, \\ \vec{e}_{y'} &= \Lambda_{y'}^x \vec{e}_x + \Lambda_{y'}^y \vec{e}_y, \end{aligned} \quad \vec{p} \rightarrow_{\mathcal{O}'} \begin{pmatrix} x' \\ y' \end{pmatrix} = \Lambda \begin{pmatrix} x \\ y \end{pmatrix}$$

$$\vec{p} = p^i \vec{e}_i \quad (\text{w:Einstein summation})$$

Einstein summation:

- coordinates like r, θ, x, y :

not a sum: $\Lambda_{y'}^x \vec{e}_x$

- repeated up-down coordinate indices like $i, j \in \{0, 1, 2\}$
or $\alpha, \beta, \gamma, \lambda, \mu, \nu \in \{0, 1, 2, 3\}$:

sum: $\Lambda_{j'}^i \vec{e}_i := \Lambda_{y'}^x \vec{e}_x + \Lambda_{y'}^y \vec{e}_y$ for a 2D manifold, coords x, y

GR: coordinate transformations

$$\begin{aligned}\vec{e}_{x'} &= \Lambda_{x'}^x \vec{e}_x + \Lambda_{x'}^y \vec{e}_y, \\ \vec{e}_{y'} &= \Lambda_{y'}^x \vec{e}_x + \Lambda_{y'}^y \vec{e}_y, \end{aligned} \quad \vec{p} \rightarrow_{\mathcal{O}'} \begin{pmatrix} x' \\ y' \end{pmatrix} = \Lambda \begin{pmatrix} x \\ y \end{pmatrix}$$

$$\vec{p} = p^i \vec{e}_i \quad (\text{w: Einstein summation})$$

new basis vectors = sum of inverse Λ \times **old** vectors

GR: coordinate transformations

$$\begin{aligned}\vec{e}_{x'} &= \Lambda_{x'}^x \vec{e}_x + \Lambda_{x'}^y \vec{e}_y, \\ \vec{e}_{y'} &= \Lambda_{y'}^x \vec{e}_x + \Lambda_{y'}^y \vec{e}_y, \end{aligned} \quad \vec{p} \rightarrow_{\mathcal{O}'} \begin{pmatrix} x' \\ y' \end{pmatrix} = \Lambda \begin{pmatrix} x \\ y \end{pmatrix}$$

$$\vec{p} = p^i \vec{e}_i \quad (\text{w:Einstein summation})$$

new basis vectors = sum of inverse $\Lambda \times$ old vectors

$$\vec{e}_{\mu'} = \sum_{\nu} \Lambda_{\mu'}^{\nu} \vec{e}_{\nu}$$

GR: coordinate transformations

$$\begin{aligned}\vec{e}_{x'} &= \Lambda_{x'}^x \vec{e}_x + \Lambda_{x'}^y \vec{e}_y, \\ \vec{e}_{y'} &= \Lambda_{y'}^x \vec{e}_x + \Lambda_{y'}^y \vec{e}_y, \end{aligned} \quad \vec{p} \rightarrow_{\mathcal{O}'} \begin{pmatrix} x' \\ y' \end{pmatrix} = \Lambda \begin{pmatrix} x \\ y \end{pmatrix}$$

$$\vec{p} = p^i \vec{e}_i \quad (\text{w: Einstein summation})$$

new basis vectors = sum of inverse Λ \times old vectors

$$\vec{e}_{\mu'} = \Lambda_{\mu'}^{\nu} \vec{e}_{\nu}$$

GR: coordinate transformations

$$\begin{aligned}\vec{e}_{x'} &= \Lambda_{x'}^x \vec{e}_x + \Lambda_{x'}^y \vec{e}_y, \\ \vec{e}_{y'} &= \Lambda_{y'}^x \vec{e}_x + \Lambda_{y'}^y \vec{e}_y, \end{aligned} \quad \vec{p} \rightarrow_{\mathcal{O}'} \begin{pmatrix} x' \\ y' \end{pmatrix} = \Lambda \begin{pmatrix} x \\ y \end{pmatrix}$$

$$\vec{p} = p^i \vec{e}_i \quad (\text{w:Einstein summation})$$

new basis vectors = sum of inverse $\Lambda \times$ old vectors

new coords of vector $\vec{p} = \Lambda \times$ old coords of same vector \vec{p}

GR: coordinate transformations

$$\begin{aligned}\vec{e}_{x'} &= \Lambda_{x'}^x \vec{e}_x + \Lambda_{x'}^y \vec{e}_y, \\ \vec{e}_{y'} &= \Lambda_{y'}^x \vec{e}_x + \Lambda_{y'}^y \vec{e}_y, \end{aligned} \quad \vec{p} \rightarrow_{\mathcal{O}'} \begin{pmatrix} x' \\ y' \end{pmatrix} = \Lambda \begin{pmatrix} x \\ y \end{pmatrix}$$

$$\vec{p} = p^i \vec{e}_i \quad (\text{w:Einstein summation})$$

new basis vectors = sum of inverse Λ \times **old** vectors

vector invariance requires contravariance of its coords

“contra” = inverse of change of basis vectors

GR: coordinate transformations

$$\begin{aligned}\vec{e}_{x'} &= \Lambda_{x'}^x \vec{e}_x + \Lambda_{x'}^y \vec{e}_y, \\ \vec{e}_{y'} &= \Lambda_{y'}^x \vec{e}_x + \Lambda_{y'}^y \vec{e}_y, \end{aligned} \quad \vec{p} \rightarrow_{\mathcal{O}'} \begin{pmatrix} x' \\ y' \end{pmatrix} = \Lambda \begin{pmatrix} x \\ y \end{pmatrix}$$

$$\vec{p} = p^i \vec{e}_i \quad (\text{w:Einstein summation})$$

new basis vectors = sum of inverse Λ \times **old** vectors

vector invariance requires contravariance of its coords

“contra” = inverse of change of basis vectors

- \vec{p} is invariant: no dependence on coords
- \vec{p} is contravariant: p^i change inversely to \vec{e}_i

GR: coord. transf.: 1-forms

$\phi = \text{scalar field} = \phi(x, y) \equiv \phi(x', y')$

write $\phi_{,x} := \frac{\partial \phi}{\partial x} =: (\tilde{d}\phi)_x$

GR: coord. transf.: 1-forms

$\phi = \text{scalar field} = \phi(x, y) \equiv \phi(x', y')$

write $\phi_{,x} := \frac{\partial \phi}{\partial x} =: (\tilde{d}\phi)_x$

What is the relation between $(\phi_{,x'}, \phi_{,y'})$
and $(\phi_{,x}, \phi_{,y})$?

GR: coord. transf.: 1-forms

$\phi = \text{scalar field} = \phi(x, y) \equiv \phi(x', y')$

write $\phi_{,x} := \frac{\partial \phi}{\partial x} =: (\tilde{d}\phi)_x$

ϕ depends either on x and y , or on x' and y'

$$\Rightarrow \frac{\partial \phi}{\partial x'} = \frac{\partial \phi}{\partial x} \frac{\partial x}{\partial x'} + \frac{\partial \phi}{\partial y} \frac{\partial y}{\partial x'}$$

GR: coord. transf.: 1-forms



$\phi = \text{scalar field} = \phi(x, y) \equiv \phi(x', y')$

write $\phi_{,x} := \frac{\partial \phi}{\partial x} =: (\tilde{d}\phi)_x$

ϕ depends either on x and y , or on x' and y'

$$\Rightarrow \phi_{,x'} = \phi_{,x} x_{,x'} + \phi_{,y} y_{,x'}$$



GR: coord. transf.: 1-forms



$\phi = \text{scalar field} = \phi(x, y) \equiv \phi(x', y')$

write $\phi_{,x} := \frac{\partial \phi}{\partial x} =: (\tilde{d}\phi)_x$

ϕ depends either on x and y , or on x' and y'

$$\Rightarrow \phi_{,x'} = \phi_{,x} x_{,x'} + \phi_{,y} y_{,x'}$$

$$(\phi_{,x'}, \phi_{,y'}) =$$



GR: coord. transf.: 1-forms

$\phi = \text{scalar field} = \phi(x, y) \equiv \phi(x', y')$

write $\phi_{,x} := \frac{\partial \phi}{\partial x} =: (\tilde{d}\phi)_x$

ϕ depends either on x and y , or on x' and y'

$$\Rightarrow \phi_{,x'} = \phi_{,x} x_{,x'} + \phi_{,y} y_{,x'}$$

$$(\phi_{,x'}, \phi_{,y'}) = (\phi_{,x} x_{,x'} + \phi_{,y} y_{,x'}, \phi_{,x} x_{,y'} + \phi_{,y} y_{,y'})$$

GR: coord. transf.: 1-forms

$\phi = \text{scalar field} = \phi(x, y) \equiv \phi(x', y')$

write $\phi_{,x} := \frac{\partial \phi}{\partial x} =: (\tilde{d}\phi)_x$

ϕ depends either on x and y , or on x' and y'

$$\Rightarrow \phi_{,x'} = \phi_{,x} x_{,x'} + \phi_{,y} y_{,x'}$$

$$(\phi_{,x'}, \phi_{,y'}) = (\phi_{,x}, \phi_{,y}) \begin{pmatrix} x_{,x'} & x_{,y'} \\ y_{,x'} & y_{,y'} \end{pmatrix}$$

GR: coord. transf.: 1-forms

$\phi = \text{scalar field} = \phi(x, y) \equiv \phi(x', y')$

write $\phi_{,x} := \frac{\partial \phi}{\partial x} =: (\tilde{d}\phi)_x$

ϕ depends either on x and y , or on x' and y'

$$\Rightarrow \phi_{,x'} = \phi_{,x} x_{,x'} + \phi_{,y} y_{,x'}$$

$$(\phi_{,x'}, \phi_{,y'}) = (\phi_{,x}, \phi_{,y}) \begin{pmatrix} x_{,x'} & x_{,y'} \\ y_{,x'} & y_{,y'} \end{pmatrix}$$

$$\begin{pmatrix} x \\ y \end{pmatrix} = \begin{pmatrix} \cos \theta & -\sin \theta \\ \sin \theta & \cos \theta \end{pmatrix} \begin{pmatrix} x' \\ y' \end{pmatrix} \quad (\text{example: rotation})$$

$$x_{,x'} = \frac{\partial x}{\partial x'} = \cos \theta$$

$$x_{,y'} = \frac{\partial x}{\partial y'} = -\sin \theta \dots$$

GR: coord. transf.: 1-forms

$\phi = \text{scalar field} = \phi(x, y) \equiv \phi(x', y')$

write $\phi_{,x} := \frac{\partial \phi}{\partial x} =: (\tilde{d}\phi)_x$

ϕ depends either on x and y , or on x' and y'

$$\Rightarrow \phi_{,x'} = \phi_{,x} x_{,x'} + \phi_{,y} y_{,x'}$$

$$(\phi_{,x'}, \phi_{,y'}) = (\phi_{,x}, \phi_{,y}) \begin{pmatrix} x_{,x'} & x_{,y'} \\ y_{,x'} & y_{,y'} \end{pmatrix}$$

$$\begin{pmatrix} x \\ y \end{pmatrix} = \begin{pmatrix} x_{,x'} & x_{,y'} \\ y_{,x'} & y_{,y'} \end{pmatrix} \begin{pmatrix} x' \\ y' \end{pmatrix} \quad (\text{general})$$

GR: coord. transf.: 1-forms

$\phi = \text{scalar field} = \phi(x, y) \equiv \phi(x', y')$

write $\phi_{,x} := \frac{\partial \phi}{\partial x} =: (\tilde{d}\phi)_x$

ϕ depends either on x and y , or on x' and y'

$$\Rightarrow \phi_{,x'} = \phi_{,x} x_{,x'} + \phi_{,y} y_{,x'}$$

$$(\phi_{,x'}, \phi_{,y'}) = (\phi_{,x}, \phi_{,y}) \begin{pmatrix} x_{,x'} & x_{,y'} \\ y_{,x'} & y_{,y'} \end{pmatrix}$$

$$\begin{pmatrix} x \\ y \end{pmatrix} = \Lambda^{-1} \begin{pmatrix} x' \\ y' \end{pmatrix} \quad (\text{general})$$

GR: coord. transf.: 1-forms

$\phi = \text{scalar field} = \phi(x, y) \equiv \phi(x', y')$

write $\phi_{,x} := \frac{\partial \phi}{\partial x} =: (\tilde{d}\phi)_x$

ϕ depends either on x and y , or on x' and y'

$$\Rightarrow \phi_{,x'} = \phi_{,x} x_{,x'} + \phi_{,y} y_{,x'}$$

$$(\phi_{,x'}, \phi_{,y'}) = (\phi_{,x}, \phi_{,y}) \begin{pmatrix} x_{,x'} & x_{,y'} \\ y_{,x'} & y_{,y'} \end{pmatrix}$$

$$\begin{pmatrix} x \\ y \end{pmatrix} = \Lambda^{-1} \begin{pmatrix} x' \\ y' \end{pmatrix} \quad (\text{general})$$

$$\Rightarrow (\phi_{,x'}, \phi_{,y'}) = (\phi_{,x}, \phi_{,y}) \Lambda^{-1}$$

GR: coord. transf.: 1-forms



$\phi = \text{scalar field} = \phi(x, y) \equiv \phi(x', y')$

write $\phi_{,x} := \frac{\partial \phi}{\partial x} =: (\tilde{d}\phi)_x$

ϕ depends either on x and y , or on x' and y'

$$\Rightarrow \phi_{,x'} = \phi_{,x} x_{,x'} + \phi_{,y} y_{,x'}$$

$$(\phi_{,x'}, \phi_{,y'}) = (\phi_{,x}, \phi_{,y}) \begin{pmatrix} x_{,x'} & x_{,y'} \\ y_{,x'} & y_{,y'} \end{pmatrix}$$

$$\begin{pmatrix} x \\ y \end{pmatrix} = \Lambda^{-1} \begin{pmatrix} x' \\ y' \end{pmatrix} \quad (\text{general})$$

$$\tilde{d}\phi = ((\tilde{d}\phi)_{x'}, (\tilde{d}\phi)_{y'}) = ((\tilde{d}\phi)_x, (\tilde{d}\phi)_y) \Lambda^{-1}$$



GR: coord. transf.: 1-forms

$\phi = \text{scalar field} = \phi(x, y) \equiv \phi(x', y')$

write $\phi_{,x} := \frac{\partial \phi}{\partial x} =: (\tilde{d}\phi)_x$

ϕ depends either on x and y , or on x' and y'

$$\Rightarrow \phi_{,x'} = \phi_{,x} x_{,x'} + \phi_{,y} y_{,x'}$$

$$(\phi_{,x'}, \phi_{,y'}) = (\phi_{,x}, \phi_{,y}) \begin{pmatrix} x_{,x'} & x_{,y'} \\ y_{,x'} & y_{,y'} \end{pmatrix}$$

$$\begin{pmatrix} x \\ y \end{pmatrix} = \Lambda^{-1} \begin{pmatrix} x' \\ y' \end{pmatrix} \quad (\text{general})$$

$$\tilde{d}\phi = ((\tilde{d}\phi)_{x'}, (\tilde{d}\phi)_{y'}) = ((\tilde{d}\phi)_x, (\tilde{d}\phi)_y) \Lambda^{-1}$$

$$(\tilde{d}\phi)_{\mu'} = (\tilde{d}\phi)_{\nu} \Lambda^{\nu}_{\mu'}$$

GR: coord. transf.: 1-forms

basis vectors of different bases: $\vec{e}_{\mu'} = \Lambda^{\nu}_{\mu'} \vec{e}_{\nu}$

same vector: $(\vec{p})^{\mu'} = \Lambda^{\mu'}_{\nu} (\vec{p})^{\nu}$

GR: coord. transf.: 1-forms

basis vectors of different bases: $\vec{e}_{\mu'} = \Lambda^{\nu}_{\mu'} \vec{e}_{\nu}$

same vector: $p^{\mu'} = \Lambda^{\mu'}_{\nu} p^{\nu}$

same gradient (example 1-form): $(\tilde{d}\phi)_{\mu'} = (\tilde{d}\phi)_{\nu} \Lambda^{\nu}_{\mu'}$

GR: coord. transf.: 1-forms

basis vectors of different bases: $\vec{e}_{\mu'} = \Lambda^{\nu}_{\mu'} \vec{e}_{\nu}$

same vector: $p^{\mu'} = \Lambda^{\mu'}_{\nu} p^{\nu}$

same gradient (example 1-form): $(\tilde{d}\phi)_{\mu'} = (\tilde{d}\phi)_{\nu} \Lambda^{\nu}_{\mu'}$

- vector \vec{p} is **in**variant: no dependence on coords
- \vec{p} is **contra**variant: components p^{ν} change inversely to how \vec{e}_{μ} change; inverses: matrix $\{\Lambda^{\nu}_{\mu'}\}$ vs $\{\Lambda^{\beta'}_{\alpha}\}$

GR: coord. transf.: 1-forms



basis vectors of different bases: $\vec{e}_{\mu'} = \Lambda^{\nu}_{\mu'} \vec{e}_{\nu}$

same vector: $p^{\mu'} = \Lambda^{\mu'}_{\nu} p^{\nu}$

same gradient (example 1-form): $(\tilde{d}\phi)_{\mu'} = (\tilde{d}\phi)_{\nu} \Lambda^{\nu}_{\mu'}$

- vector \vec{p} is **in**variant: no dependence on coords
- \vec{p} is **contra**variant: components p^{ν} change inversely to

how \vec{e}_{μ} change; inverses: matrix $\{\Lambda^{\nu}_{\mu'}\}$ vs $\{\Lambda^{\beta'}_{\alpha}\}$

- 1-form $\tilde{d}\phi$ is **in**variant: no dependence on coords
- $\tilde{d}\phi$ is **cova**riant: components $(\tilde{d}\phi)_{\mu}$ change like \vec{e}_{μ} (but left-multiply)



GR: coord. transf.: 1-forms



basis vectors of different bases: $\vec{e}_{\mu'} = \Lambda^{\nu}_{\mu'} \vec{e}_{\nu}$

same vector: $p^{\mu'} = \Lambda^{\mu'}_{\nu} p^{\nu}$

same gradient (example 1-form): $(\tilde{d}\phi)_{\mu'} = (\tilde{d}\phi)_{\nu} \Lambda^{\nu}_{\mu'}$

- vector \vec{p} is **in**variant: no dependence on coords
- \vec{p} is **contra**variant: components p^{ν} change inversely to

how \vec{e}_{μ} change; inverses: matrix $\{\Lambda^{\nu}_{\mu'}\}$ vs $\{\Lambda^{\beta'}_{\alpha}\}$

- 1-form $\tilde{d}\phi$ is **in**variant: no dependence on coords
- $\tilde{d}\phi$ is **cova**riant: components $(\tilde{d}\phi)_{\mu}$ change like \vec{e}_{μ} (but left-multiply)

w:Covariance and contravariance of vectors





GR: $\vec{p}, \tilde{q}, \langle \vec{p}, \tilde{q} \rangle, \mathbf{g}$

GR tensors: two different scalar products





GR: $\vec{p}, \tilde{q}, \langle \vec{p}, \tilde{q} \rangle, \mathbf{g}$

GR tensors: two different scalar products
vector–1-form duality requirement:





GR: \vec{p} , \tilde{q} , $\langle \vec{p}, \tilde{q} \rangle$, \mathbf{g}

GR tensors: two different scalar products

vector–1-form duality requirement:

$$\langle \vec{p}, \tilde{q} \rangle = \sum_{\mu} p^{\mu} q_{\mu}$$





GR: $\vec{p}, \tilde{q}, \langle \vec{p}, \tilde{q} \rangle, \mathbf{g}$

GR tensors: two different scalar products

vector–1-form duality requirement:

$$\langle \vec{p}, \tilde{q} \rangle = p^\mu q_\mu$$



GR: $\vec{p}, \tilde{q}, \langle \vec{p}, \tilde{q} \rangle, \mathbf{g}$



GR tensors: two different scalar products

vector–1-form duality requirement:

$$\langle \vec{p}, \tilde{q} \rangle = p^\mu q_\mu = \vec{p}(\tilde{q})$$



GR: $\vec{p}, \tilde{q}, \langle \vec{p}, \tilde{q} \rangle, \mathbf{g}$



GR tensors: two different scalar products

vector–1-form duality requirement:

$$\langle \vec{p}, \tilde{q} \rangle = p^\mu q_\mu = \vec{p}(\tilde{q}) = \tilde{q}(\vec{p})$$



GR: $\vec{p}, \tilde{q}, \langle \vec{p}, \tilde{q} \rangle, \mathbf{g}$

GR tensors: two different scalar products

vector–1-form duality requirement:

$$\langle \vec{p}, \tilde{q} \rangle = p^\mu q_\mu = \vec{p}(\tilde{q}) = \tilde{q}(\vec{p})$$

\langle , \rangle is a (1,1) tensor

GR: $\vec{p}, \tilde{q}, \langle \vec{p}, \tilde{q} \rangle, \mathbf{g}$



GR tensors: two different scalar products

vector–1-form duality requirement:

$$\langle \vec{p}, \tilde{q} \rangle = p^\mu q_\mu = \vec{p}(\tilde{q}) = \tilde{q}(\vec{p})$$

\langle , \rangle is a (1,1) tensor

can be called I with components δ^μ_ν in a coordinate basis



GR: $\vec{p}, \tilde{q}, \langle \vec{p}, \tilde{q} \rangle, \mathbf{g}$



GR tensors: two different scalar products

vector–1-form duality requirement:

$$\langle \vec{p}, \tilde{q} \rangle = p^\mu q_\mu = \vec{p}(\tilde{q}) = \tilde{q}(\vec{p})$$

\langle , \rangle is a (1,1) tensor

think: vector \rightarrow column vector

1-form \rightarrow row vector



GR: $\vec{p}, \tilde{q}, \langle \vec{p}, \tilde{q} \rangle, \mathbf{g}$



GR tensors: two different scalar products

vector–1-form duality requirement:

$$\langle \vec{p}, \tilde{q} \rangle = p^\mu q_\mu = \vec{p}(\tilde{q}) = \tilde{q}(\vec{p})$$

\langle , \rangle is a (1,1) tensor

$$(q_0, q_1) \begin{pmatrix} 1 & 0 \\ 0 & 1 \end{pmatrix} \begin{pmatrix} p^0 \\ p^1 \end{pmatrix} =$$



GR: \vec{p} , \tilde{q} , $\langle \vec{p}, \tilde{q} \rangle$, \mathbf{g}



GR tensors: two different scalar products

vector–1-form duality requirement:

$$\langle \vec{p}, \tilde{q} \rangle = p^\mu q_\mu = \vec{p}(\tilde{q}) = \tilde{q}(\vec{p})$$

\langle , \rangle is a (1,1) tensor

$$(q_0, q_1) \begin{pmatrix} 1 & 0 \\ 0 & 1 \end{pmatrix} \begin{pmatrix} p^0 \\ p^1 \end{pmatrix} = (q_0, q_1) \begin{pmatrix} p^0 \\ p^1 \end{pmatrix}$$



GR: \vec{p} , \tilde{q} , $\langle \vec{p}, \tilde{q} \rangle$, \mathbf{g}



GR tensors: two different scalar products

vector–1-form duality requirement:

$$\langle \vec{p}, \tilde{q} \rangle = p^\mu q_\mu = \vec{p}(\tilde{q}) = \tilde{q}(\vec{p})$$

\langle , \rangle is a (1,1) tensor

$$(q_0, q_1) \begin{pmatrix} 1 & 0 \\ 0 & 1 \end{pmatrix} \begin{pmatrix} p^0 \\ p^1 \end{pmatrix} = (q_0, q_1) \begin{pmatrix} p^0 \\ p^1 \end{pmatrix} = p^\mu q_\mu$$



GR: $\vec{p}, \tilde{q}, \langle \vec{p}, \tilde{q} \rangle, \mathbf{g}$

GR tensors: two different scalar products

vector–1-form duality requirement:

$$\langle \vec{p}, \tilde{q} \rangle = p^\mu q_\mu = \vec{p}(\tilde{q}) = \tilde{q}(\vec{p})$$

\langle , \rangle is a (1,1) tensor

$$(q_0, q_1) \begin{pmatrix} 1 & 0 \\ 0 & 1 \end{pmatrix} \begin{pmatrix} p^0 \\ p^1 \end{pmatrix} = (q_0, q_1) \begin{pmatrix} p^0 \\ p^1 \end{pmatrix} = p^\mu q_\mu$$

$\langle , \rangle = (1,1)$ -tensor = “row-column” matrix I with $I^\mu_\nu = \delta^\mu_\nu$



GR: $\vec{p}, \tilde{q}, \langle \vec{p}, \tilde{q} \rangle, \mathbf{g}$

GR tensors: two different scalar products



GR: $\vec{p}, \tilde{q}, \langle \vec{p}, \tilde{q} \rangle, \mathbf{g}$

GR tensors: two different scalar products

ordinary linear algebra: column vectors, row vectors, matrices





GR: $\vec{p}, \tilde{q}, \langle \vec{p}, \tilde{q} \rangle, \mathbf{g}$

GR tensors: two different scalar products

(m, n) -tensor algebra: m column n row $m + n$ -arrays





GR: \vec{p} , \tilde{q} , $\langle \vec{p}, \tilde{q} \rangle$, \mathbf{g}

GR tensors: two different scalar products

(m, n) -tensor algebra: m column n row $m + n$ -arrays

e.g.: $(0, 2)$ -tensor: metric $g_{\mu\nu}$



GR: $\vec{p}, \tilde{q}, \langle \vec{p}, \tilde{q} \rangle, \mathbf{g}$

GR tensors: two different scalar products

(m, n) -tensor algebra: m column n row $m + n$ -arrays

using \langle, \rangle , $(1, 0)$ -tensor = vector = function of 1-forms



GR: $\vec{p}, \tilde{q}, \langle \vec{p}, \tilde{q} \rangle, \mathbf{g}$

GR tensors: two different scalar products

(m, n) -tensor algebra: m column n row $m + n$ -arrays

using \langle, \rangle , $(0, 1)$ -tensor = 1-form = function of vectors

GR: $\vec{p}, \tilde{q}, \langle \vec{p}, \tilde{q} \rangle, \mathbf{g}$

GR tensors: two different scalar products

(m, n) -tensor algebra: m column n row $m + n$ -arrays

(m, n) -tensor = function of m 1-forms and n vectors



GR: $\vec{p}, \tilde{q}, \langle \vec{p}, \tilde{q} \rangle, \mathbf{g}$

GR tensors: two different scalar products

(m, n) -tensor algebra: m column n row $m + n$ -arrays

(m, n) -tensor = function of m 1-forms and n vectors

V = space of vectors $\vec{p} = p^\mu \vec{e}_\mu$

GR: \vec{p} , \tilde{q} , $\langle \vec{p}, \tilde{q} \rangle$, \mathbf{g}

GR tensors: two different scalar products

(m, n) -tensor algebra: m column n row $m + n$ -arrays

(m, n) -tensor = function of m 1-forms and n vectors

V = space of vectors $\vec{p} = p^\mu \vec{e}_\mu$

V^* = dual space of 1-forms $\tilde{q} = q_\mu \tilde{e}^\mu$

GR: \vec{p} , \tilde{q} , $\langle \vec{p}, \tilde{q} \rangle$, \mathbf{g}

GR tensors: two different scalar products

(m, n) -tensor algebra: m column n row $m + n$ -arrays

(m, n) -tensor = function of m 1-forms and n vectors

V = space of vectors $\vec{p} = p^\mu \vec{e}_\mu$

V^* = dual space of 1-forms $\tilde{q} = q_\mu \tilde{e}^\mu$

$V^* \otimes V^*$ = space of $(0, 2)$ -tensors $\mathbf{T} = T_{\mu\nu} \tilde{e}^\mu \otimes \tilde{e}^\nu$ (e.g. metric) w:tensor product

GR: \vec{p} , \tilde{q} , $\langle \vec{p}, \tilde{q} \rangle$, \mathbf{g}

GR tensors: two different scalar products

(m, n) -tensor algebra: m column n row $m + n$ -arrays

(m, n) -tensor = function of m 1-forms and n vectors

V = space of vectors $\vec{p} = p^\mu \vec{e}_\mu$

V^* = dual space of 1-forms $\tilde{q} = q_\mu \tilde{e}^\mu$

$V^* \otimes V^*$ = space of $(0, 2)$ -tensors $\mathbf{T} = T_{\mu\nu} \tilde{e}^\mu \otimes \tilde{e}^\nu$ (e.g. metric) w:tensor product

loosely speaking, the second \otimes means "function of two vectors" (or 1-forms, or a vector and a 1-form) in *that particular left-to-right order*

GR: \vec{p} , \tilde{q} , $\langle \vec{p}, \tilde{q} \rangle$, \mathbf{g}

GR tensors: two different scalar products

(m, n) -tensor algebra: m column n row $m + n$ -arrays

(m, n) -tensor = function of m 1-forms and n vectors

V = space of vectors $\vec{p} = p^\mu \vec{e}_\mu$

V^* = dual space of 1-forms $\tilde{q} = q_\mu \tilde{e}^\mu$

$V^* \otimes V^*$ = space of $(0, 2)$ -tensors $\mathbf{T} = T_{\mu\nu} \tilde{e}^\mu \otimes \tilde{e}^\nu$ (e.g. metric) w:tensor product

order of $V^* \otimes V^* = 2$

GR: \vec{p} , \tilde{q} , $\langle \vec{p}, \tilde{q} \rangle$, \mathbf{g}

GR tensors: two different scalar products

(m, n) -tensor algebra: m column n row $m + n$ -arrays

(m, n) -tensor = function of m 1-forms and n vectors

V = space of vectors $\vec{p} = p^\mu \vec{e}_\mu$

V^* = dual space of 1-forms $\tilde{q} = q_\mu \tilde{e}^\mu$

$V^* \otimes V^*$ = space of $(0, 2)$ -tensors $\mathbf{T} = T_{\mu\nu} \tilde{e}^\mu \otimes \tilde{e}^\nu$ (e.g. metric) w:tensor product

order of $V^* \otimes V^* = 2$

warning: the "rank" of tensors has two different meanings: w:Tensor_(intrinsic_definition)#Tensor_rank

GR: \vec{p} , \tilde{q} , $\langle \vec{p}, \tilde{q} \rangle$, \mathbf{g}

GR tensors: two different scalar products

(m, n) -tensor algebra: m column n row $m + n$ -arrays

(m, n) -tensor = function of m 1-forms and n vectors

V = space of vectors $\vec{p} = p^\mu \vec{e}_\mu$

V^* = dual space of 1-forms $\tilde{q} = q_\mu \tilde{e}^\mu$

$V^* \otimes V^*$ = space of $(0, 2)$ -tensors $\mathbf{T} = T_{\mu\nu} \tilde{e}^\mu \otimes \tilde{e}^\nu$ (e.g. metric) w:tensor product

order of $V^* \otimes V^* = 2$

dimension of $V^* \otimes V^* = 16$ (for V = spacetime)

GR: g

$V^* \otimes V^*$ = space of $(0, 2)$ -tensors $\mathbf{T} = T_{\mu\nu} \tilde{e}^\mu \otimes \tilde{e}^\nu$, where
 $\otimes =$ w:tensor product

GR: g

$V^* \otimes V^*$ = space of $(0, 2)$ -tensors $T = T_{\mu\nu} \tilde{e}^\mu \otimes \tilde{e}^\nu$, where

\otimes = w:tensor product

e.g.: metric g = function of two vectors

GR: g

$V^* \otimes V^* =$ space of $(0, 2)$ -tensors $T = T_{\mu\nu} \tilde{e}^\mu \otimes \tilde{e}^\nu$, where

$\otimes =$ w:tensor product

e.g.: metric $g =$ function of two vectors

= "row-row" matrix

GR: g

$V^* \otimes V^* =$ space of $(0, 2)$ -tensors $T = T_{\mu\nu} \tilde{e}^\mu \otimes \tilde{e}^\nu$, where
 $\otimes =$ w:tensor product

e.g.: metric $g =$ function of two vectors
 $=$ "row-row" matrix

e.g. Euclidean g on \mathbb{R}^2 . g in r, θ coords is $\begin{pmatrix} 1 & 0 \\ 0 & r^2 \end{pmatrix}$

GR: g

$V^* \otimes V^*$ = space of $(0, 2)$ -tensors $T = T_{\mu\nu} \tilde{e}^\mu \otimes \tilde{e}^\nu$, where
 $\otimes =$ w:tensor product

e.g.: metric g = function of two vectors
= "row-row" matrix

e.g. Euclidean g on \mathbb{R}^2 . g in r, θ coords is $\begin{pmatrix} 1 & 0 \\ 0 & r^2 \end{pmatrix}$

and g in x, y coords is $\begin{pmatrix} 1 & 0 \\ 0 & 1 \end{pmatrix}$

GR: g

$V^* \otimes V^*$ = space of $(0, 2)$ -tensors $T = T_{\mu\nu} \tilde{e}^\mu \otimes \tilde{e}^\nu$, where
 $\otimes =$ w:tensor product

e.g.: metric g = function of two vectors
= "row-row" matrix

e.g. Euclidean g on \mathbb{R}^2 . g in r, θ coords is $\begin{pmatrix} 1 & 0 \\ 0 & r^2 \end{pmatrix}$

and g in x, y coords is $\begin{pmatrix} 1 & 0 \\ 0 & 1 \end{pmatrix}$

$g(\vec{A}, \vec{B})$

GR: g

$V^* \otimes V^*$ = space of $(0, 2)$ -tensors $T = T_{\mu\nu} \tilde{e}^\mu \otimes \tilde{e}^\nu$, where
 \otimes = w:tensor product

e.g.: metric g = function of two vectors
= "row-row" matrix

e.g. Euclidean g on \mathbb{R}^2 . g in r, θ coords is $\begin{pmatrix} 1 & 0 \\ 0 & r^2 \end{pmatrix}$

and g in x, y coords is $\begin{pmatrix} 1 & 0 \\ 0 & 1 \end{pmatrix}$

also written: $\vec{A} \cdot \vec{B}$ "dot product"

GR: g

$V^* \otimes V^*$ = space of $(0, 2)$ -tensors $T = T_{\mu\nu} \tilde{e}^\mu \otimes \tilde{e}^\nu$, where
 $\otimes =$ w:tensor product

e.g.: metric g = function of two vectors
= "row-row" matrix

e.g. Euclidean g on \mathbb{R}^2 . g in r, θ coords is $\begin{pmatrix} 1 & 0 \\ 0 & r^2 \end{pmatrix}$

and g in x, y coords is $\begin{pmatrix} 1 & 0 \\ 0 & 1 \end{pmatrix}$

$g(\vec{A}, \vec{B})$

GR: g

$V^* \otimes V^*$ = space of $(0, 2)$ -tensors $T = T_{\mu\nu} \tilde{e}^\mu \otimes \tilde{e}^\nu$, where
 \otimes = w:tensor product

e.g.: metric g = function of two vectors
= "row-row" matrix

e.g. Euclidean g on \mathbb{R}^2 . g in r, θ coords is $\begin{pmatrix} 1 & 0 \\ 0 & r^2 \end{pmatrix}$

and g in x, y coords is $\begin{pmatrix} 1 & 0 \\ 0 & 1 \end{pmatrix}$

$$g(\vec{A}, \vec{B}) = \left[\begin{pmatrix} 1 & 0 \\ 0 & r^2 \end{pmatrix} \begin{pmatrix} A^r \\ A^\theta \end{pmatrix} \right]^T \begin{pmatrix} B^r \\ B^\theta \end{pmatrix}$$

GR: g

$V^* \otimes V^*$ = space of $(0, 2)$ -tensors $T = T_{\mu\nu} \tilde{e}^\mu \otimes \tilde{e}^\nu$, where
 $\otimes =$ w:tensor product

e.g.: metric g = function of two vectors
= "row-row" matrix

e.g. Euclidean g on \mathbb{R}^2 . g in r, θ coords is $\begin{pmatrix} 1 & 0 \\ 0 & r^2 \end{pmatrix}$

and g in x, y coords is $\begin{pmatrix} 1 & 0 \\ 0 & 1 \end{pmatrix}$

$g(\vec{A}, \vec{B}) = (A^r, A^\theta r^2) \begin{pmatrix} B^r \\ B^\theta \end{pmatrix}$

GR: g

$V^* \otimes V^*$ = space of $(0, 2)$ -tensors $T = T_{\mu\nu} \tilde{e}^\mu \otimes \tilde{e}^\nu$, where
 \otimes = w:tensor product

e.g.: metric g = function of two vectors
= "row-row" matrix

e.g. Euclidean g on \mathbb{R}^2 . g in r, θ coords is $\begin{pmatrix} 1 & 0 \\ 0 & r^2 \end{pmatrix}$

and g in x, y coords is $\begin{pmatrix} 1 & 0 \\ 0 & 1 \end{pmatrix}$

$$g(\vec{A}, \vec{B}) = A^r B^r + A^\theta B^\theta r^2$$

GR: g

$V^* \otimes V^*$ = space of $(0, 2)$ -tensors $T = T_{\mu\nu} \tilde{e}^\mu \otimes \tilde{e}^\nu$, where
 \otimes = w:tensor product

e.g.: metric g = function of two vectors
= "row-row" matrix

e.g. Euclidean g on \mathbb{R}^2 . g in r, θ coords is $\begin{pmatrix} 1 & 0 \\ 0 & r^2 \end{pmatrix}$

and g in x, y coords is $\begin{pmatrix} 1 & 0 \\ 0 & 1 \end{pmatrix}$

$$g(\vec{A}, \vec{B}) = A^r B^r + A^\theta B^\theta r^2$$

$$= \left[\begin{pmatrix} 1 & 0 \\ 0 & 1 \end{pmatrix} \begin{pmatrix} A^x \\ A^y \end{pmatrix} \right]^T \begin{pmatrix} B^x \\ B^y \end{pmatrix}$$

GR: g

$V^* \otimes V^*$ = space of $(0, 2)$ -tensors $T = T_{\mu\nu} \tilde{e}^\mu \otimes \tilde{e}^\nu$, where
 $\otimes =$ w:tensor product

e.g.: metric g = function of two vectors
= "row-row" matrix

e.g. Euclidean g on \mathbb{R}^2 . g in r, θ coords is $\begin{pmatrix} 1 & 0 \\ 0 & r^2 \end{pmatrix}$

and g in x, y coords is $\begin{pmatrix} 1 & 0 \\ 0 & 1 \end{pmatrix}$

$$g(\vec{A}, \vec{B}) = A^r B^r + A^\theta B^\theta r^2 = (A^x, A^y) \begin{pmatrix} B^x \\ B^y \end{pmatrix}$$

GR: g

$V^* \otimes V^*$ = space of $(0, 2)$ -tensors $T = T_{\mu\nu} \tilde{e}^\mu \otimes \tilde{e}^\nu$, where
 \otimes = w:tensor product

e.g.: metric g = function of two vectors
= "row-row" matrix

e.g. Euclidean g on \mathbb{R}^2 . g in r, θ coords is $\begin{pmatrix} 1 & 0 \\ 0 & r^2 \end{pmatrix}$

and g in x, y coords is $\begin{pmatrix} 1 & 0 \\ 0 & 1 \end{pmatrix}$

$$g(\vec{A}, \vec{B}) = A^r B^r + A^\theta B^\theta r^2 = A^x B^x + A^y B^y$$

GR: g

$V^* \otimes V^*$ = space of $(0, 2)$ -tensors $T = T_{\mu\nu} \tilde{e}^\mu \otimes \tilde{e}^\nu$, where
 $\otimes =$ w:tensor product

e.g.: metric g = function of two vectors
= "row-row" matrix

e.g. Euclidean g on \mathbb{R}^2 . g in r, θ coords is $\begin{pmatrix} 1 & 0 \\ 0 & r^2 \end{pmatrix}$

and g in x, y coords is $\begin{pmatrix} 1 & 0 \\ 0 & 1 \end{pmatrix}$

$$g(\vec{A}, \vec{B}) = A^r B^r + A^\theta B^\theta r^2 = A^x B^x + A^y B^y$$

in general, for a 2-form \mathbf{T} , $\mathbf{T}(\vec{A}, \vec{B}) \neq \mathbf{T}(\vec{B}, \vec{A})$

GR: g

$V^* \otimes V^*$ = space of $(0, 2)$ -tensors $T = T_{\mu\nu} \tilde{e}^\mu \otimes \tilde{e}^\nu$, where
 \otimes = w:tensor product

e.g.: metric g = function of two vectors
= "row-row" matrix

e.g. Euclidean g on \mathbb{R}^2 . g in r, θ coords is $\begin{pmatrix} 1 & 0 \\ 0 & r^2 \end{pmatrix}$

and g in x, y coords is $\begin{pmatrix} 1 & 0 \\ 0 & 1 \end{pmatrix}$

$$g(\vec{A}, \vec{B}) = A^r B^r + A^\theta B^\theta r^2 = A^x B^x + A^y B^y$$

$$g = g_{\mu\nu} \tilde{e}^\mu \otimes \tilde{e}^\nu$$

GR: g

$V^* \otimes V^*$ = space of $(0, 2)$ -tensors $T = T_{\mu\nu} \tilde{e}^\mu \otimes \tilde{e}^\nu$, where
 \otimes = w:tensor product

e.g.: metric g = function of two vectors
= "row-row" matrix

e.g. Euclidean g on \mathbb{R}^2 . g in r, θ coords is $\begin{pmatrix} 1 & 0 \\ 0 & r^2 \end{pmatrix}$

and g in x, y coords is $\begin{pmatrix} 1 & 0 \\ 0 & 1 \end{pmatrix}$

$$g(\vec{A}, \vec{B}) = A^r B^r + A^\theta B^\theta r^2 = A^x B^x + A^y B^y$$

$$g = \sum_{\mu \in \{r, \theta\}, \nu \in \{r, \theta\}} g_{\mu\nu} \tilde{e}^\mu \otimes \tilde{e}^\nu$$

GR: g

$V^* \otimes V^*$ = space of (0, 2)-tensors $T = T_{\mu\nu} \tilde{e}^\mu \otimes \tilde{e}^\nu$, where
 \otimes = w:tensor product

e.g.: metric g = function of two vectors
= "row-row" matrix

e.g. Euclidean g on \mathbb{R}^2 . g in r, θ coords is $\begin{pmatrix} 1 & 0 \\ 0 & r^2 \end{pmatrix}$

and g in x, y coords is $\begin{pmatrix} 1 & 0 \\ 0 & 1 \end{pmatrix}$

$$g(\vec{A}, \vec{B}) = A^r B^r + A^\theta B^\theta r^2 = A^x B^x + A^y B^y$$

$$g = \sum_{\mu \in \{x, y\}, \nu \in \{x, y\}} g_{\mu\nu} \tilde{e}^\mu \otimes \tilde{e}^\nu$$



GR: metric tensor g , g^{-1} , bases

g can be applied to basis vectors \vec{e}_μ



GR: metric tensor \mathbf{g} , \mathbf{g}^{-1} , bases

\mathbf{g} can be applied to basis vectors \vec{e}_μ

we can define components (used earlier): $g_{\mu\nu} := \mathbf{g}(\vec{e}_\mu, \vec{e}_\nu)$



GR: metric tensor \mathbf{g} , \mathbf{g}^{-1} , bases

\mathbf{g} can be applied to basis vectors \vec{e}_μ

we can define components (used earlier): $g_{\mu\nu} := \mathbf{g}(\vec{e}_\mu, \vec{e}_\nu)$

$$\Rightarrow \mathbf{g} = g_{\mu\nu} \tilde{e}^\mu \otimes \tilde{e}^\nu$$

GR: metric tensor \mathbf{g} , \mathbf{g}^{-1} , bases

\mathbf{g} can be applied to basis vectors \vec{e}_μ

we can define components (used earlier): $g_{\mu\nu} := \mathbf{g}(\vec{e}_\mu, \vec{e}_\nu)$

$$\Rightarrow \mathbf{g} = g_{\mu\nu} \tilde{e}^\mu \otimes \tilde{e}^\nu$$

$$\text{e.g. } \mathbf{g} = g_{rr} \tilde{e}^r \otimes \tilde{e}^r + g_{r\theta} \tilde{e}^r \otimes \tilde{e}^\theta + g_{\theta r} \tilde{e}^\theta \otimes \tilde{e}^r + g_{\theta\theta} \tilde{e}^\theta \otimes \tilde{e}^\theta$$

GR: metric tensor \mathbf{g} , \mathbf{g}^{-1} , bases

\mathbf{g} can be applied to basis vectors \vec{e}_μ

we can define components (used earlier): $g_{\mu\nu} := \mathbf{g}(\vec{e}_\mu, \vec{e}_\nu)$

$$\Rightarrow \mathbf{g} = g_{\mu\nu} \tilde{e}^\mu \otimes \tilde{e}^\nu$$

$$\text{e.g. } \mathbf{g} = g_{rr} \tilde{e}^r \otimes \tilde{e}^r + g_{\theta\theta} \tilde{e}^\theta \otimes \tilde{e}^\theta$$

GR: metric tensor \mathbf{g} , \mathbf{g}^{-1} , bases

\mathbf{g} can be applied to basis vectors \vec{e}_μ

we can define components (used earlier): $g_{\mu\nu} := \mathbf{g}(\vec{e}_\mu, \vec{e}_\nu)$

$$\Rightarrow \mathbf{g} = g_{\mu\nu} \tilde{e}^\mu \otimes \tilde{e}^\nu$$

$$\text{e.g. } \mathbf{g} = g_{rr} \tilde{e}^r \otimes \tilde{e}^r + g_{\theta\theta} \tilde{e}^\theta \otimes \tilde{e}^\theta$$

check: $\mathbf{g}(\vec{e}_r, \vec{e}_r) = g_{rr}$?

GR: metric tensor \mathbf{g} , \mathbf{g}^{-1} , bases

\mathbf{g} can be applied to basis vectors \vec{e}_μ

we can define components (used earlier): $g_{\mu\nu} := \mathbf{g}(\vec{e}_\mu, \vec{e}_\nu)$

$$\Rightarrow \mathbf{g} = g_{\mu\nu} \tilde{e}^\mu \otimes \tilde{e}^\nu$$

$$\text{e.g. } \mathbf{g} = g_{rr} \tilde{e}^r \otimes \tilde{e}^r + g_{\theta\theta} \tilde{e}^\theta \otimes \tilde{e}^\theta$$

$$\mathbf{g}(\vec{e}_r, \vec{e}_r) = (g_{rr} \tilde{e}^r \otimes \tilde{e}^r + g_{\theta\theta} \tilde{e}^\theta \otimes \tilde{e}^\theta)(\vec{e}_r, \vec{e}_r)$$

GR: metric tensor \mathbf{g} , \mathbf{g}^{-1} , bases

\mathbf{g} can be applied to basis vectors \vec{e}_μ

we can define components (used earlier): $g_{\mu\nu} := \mathbf{g}(\vec{e}_\mu, \vec{e}_\nu)$

$$\Rightarrow \mathbf{g} = g_{\mu\nu} \tilde{e}^\mu \otimes \tilde{e}^\nu$$

$$\text{e.g. } \mathbf{g} = g_{rr} \tilde{e}^r \otimes \tilde{e}^r + g_{\theta\theta} \tilde{e}^\theta \otimes \tilde{e}^\theta$$

$$\mathbf{g}(\vec{e}_r, \vec{e}_r) = g_{rr} \tilde{e}^r \otimes \tilde{e}^r(\vec{e}_r, \vec{e}_r) + g_{\theta\theta} \tilde{e}^\theta \otimes \tilde{e}^\theta(\vec{e}_r, \vec{e}_r)$$

GR: metric tensor \mathbf{g} , \mathbf{g}^{-1} , bases

\mathbf{g} can be applied to basis vectors \vec{e}_μ

we can define components (used earlier): $g_{\mu\nu} := \mathbf{g}(\vec{e}_\mu, \vec{e}_\nu)$

$$\Rightarrow \mathbf{g} = g_{\mu\nu} \tilde{e}^\mu \otimes \tilde{e}^\nu$$

$$\text{e.g. } \mathbf{g} = g_{rr} \tilde{e}^r \otimes \tilde{e}^r + g_{\theta\theta} \tilde{e}^\theta \otimes \tilde{e}^\theta$$

$$\mathbf{g}(\vec{e}_r, \vec{e}_r) = g_{rr} \tilde{e}^r(\vec{e}_r) \tilde{e}^r(\vec{e}_r) + g_{\theta\theta} \tilde{e}^\theta(\vec{e}_r) \tilde{e}^\theta(\vec{e}_r)$$

GR: metric tensor \mathbf{g} , \mathbf{g}^{-1} , bases

\mathbf{g} can be applied to basis vectors \vec{e}_μ

we can define components (used earlier): $g_{\mu\nu} := \mathbf{g}(\vec{e}_\mu, \vec{e}_\nu)$

$$\Rightarrow \mathbf{g} = g_{\mu\nu} \tilde{e}^\mu \otimes \tilde{e}^\nu$$

$$\text{e.g. } \mathbf{g} = g_{rr} \tilde{e}^r \otimes \tilde{e}^r + g_{\theta\theta} \tilde{e}^\theta \otimes \tilde{e}^\theta$$

$$\mathbf{g}(\vec{e}_r, \vec{e}_r) = g_{rr} \langle \tilde{e}^r, \vec{e}_r \rangle \langle \tilde{e}^r, \vec{e}_r \rangle + g_{\theta\theta} \langle \tilde{e}^\theta, \vec{e}_r \rangle \langle \tilde{e}^\theta, \vec{e}_r \rangle$$

GR: metric tensor \mathbf{g} , \mathbf{g}^{-1} , bases

\mathbf{g} can be applied to basis vectors \vec{e}_μ

we can define components (used earlier): $g_{\mu\nu} := \mathbf{g}(\vec{e}_\mu, \vec{e}_\nu)$

$$\Rightarrow \mathbf{g} = g_{\mu\nu} \tilde{e}^\mu \otimes \tilde{e}^\nu$$

$$\text{e.g. } \mathbf{g} = g_{rr} \tilde{e}^r \otimes \tilde{e}^r + g_{\theta\theta} \tilde{e}^\theta \otimes \tilde{e}^\theta$$

$\mathbf{g}(\vec{e}_r, \vec{e}_r) = g_{rr} \times 1 \times 1 + g_{\theta\theta} \times 0 \times 0$ by duality through scalar product \langle , \rangle

GR: metric tensor \mathbf{g} , \mathbf{g}^{-1} , bases

\mathbf{g} can be applied to basis vectors \vec{e}_μ

we can define components (used earlier): $g_{\mu\nu} := \mathbf{g}(\vec{e}_\mu, \vec{e}_\nu)$

$$\Rightarrow \mathbf{g} = g_{\mu\nu} \tilde{e}^\mu \otimes \tilde{e}^\nu$$

$$\text{e.g. } \mathbf{g} = g_{rr} \tilde{e}^r \otimes \tilde{e}^r + g_{\theta\theta} \tilde{e}^\theta \otimes \tilde{e}^\theta$$

$$\mathbf{g}(\vec{e}_r, \vec{e}_r) = g_{rr} \text{ self-consistent definition}$$

GR: metric tensor \mathbf{g} , \mathbf{g}^{-1} , bases

\mathbf{g} can be applied to basis vectors \vec{e}_μ

we can define components (used earlier): $g_{\mu\nu} := \mathbf{g}(\vec{e}_\mu, \vec{e}_\nu)$

$$\Rightarrow \mathbf{g} = g_{\mu\nu} \tilde{e}^\mu \otimes \tilde{e}^\nu$$

$$\text{e.g. } \mathbf{g} = g_{rr} \tilde{e}^r \otimes \tilde{e}^r + g_{\theta\theta} \tilde{e}^\theta \otimes \tilde{e}^\theta$$

$$\text{inverse: } \mathbf{g}^{-1} = g^{\mu\nu} \vec{e}_\mu \otimes \vec{e}_\nu,$$

GR: metric tensor \mathbf{g} , \mathbf{g}^{-1} , bases

\mathbf{g} can be applied to basis vectors \vec{e}_μ

we can define components (used earlier): $g_{\mu\nu} := \mathbf{g}(\vec{e}_\mu, \vec{e}_\nu)$

$$\Rightarrow \mathbf{g} = g_{\mu\nu} \tilde{e}^\mu \otimes \tilde{e}^\nu$$

$$\text{e.g. } \mathbf{g} = g_{rr} \tilde{e}^r \otimes \tilde{e}^r + g_{\theta\theta} \tilde{e}^\theta \otimes \tilde{e}^\theta$$

$$\text{inverse: } \mathbf{g}^{-1} = g^{\mu\nu} \vec{e}_\mu \otimes \vec{e}_\nu,$$

$$\text{where } g^{\mu\alpha} g_{\alpha\nu} = \delta^\mu_\nu$$

GR: metric tensor \mathbf{g} , \mathbf{g}^{-1} , bases

\mathbf{g} can be applied to basis vectors \vec{e}_μ

we can define components (used earlier): $g_{\mu\nu} := \mathbf{g}(\vec{e}_\mu, \vec{e}_\nu)$

$$\Rightarrow \mathbf{g} = g_{\mu\nu} \tilde{e}^\mu \otimes \tilde{e}^\nu$$

$$\text{e.g. } \mathbf{g} = g_{rr} \tilde{e}^r \otimes \tilde{e}^r + g_{\theta\theta} \tilde{e}^\theta \otimes \tilde{e}^\theta$$

$$\text{inverse: } \mathbf{g}^{-1} = g^{\mu\nu} \vec{e}_\mu \otimes \vec{e}_\nu,$$

$$\text{where } g^{\mu\alpha} g_{\alpha\nu} = \delta^\mu_\nu$$

duality of associate vectors and 1-forms:

$$\mathbf{g}(\vec{A}, \vec{B}) = \mathbf{g}^{-1}(\tilde{A}, \tilde{B})$$

GR: metric tensor \mathbf{g} , \mathbf{g}^{-1} , bases

\mathbf{g} can be applied to basis vectors \vec{e}_μ

we can define components (used earlier): $g_{\mu\nu} := \mathbf{g}(\vec{e}_\mu, \vec{e}_\nu)$

$$\Rightarrow \mathbf{g} = g_{\mu\nu} \tilde{e}^\mu \otimes \tilde{e}^\nu$$

$$\text{e.g. } \mathbf{g} = g_{rr} \tilde{e}^r \otimes \tilde{e}^r + g_{\theta\theta} \tilde{e}^\theta \otimes \tilde{e}^\theta$$

$$\text{inverse: } \mathbf{g}^{-1} = g^{\mu\nu} \vec{e}_\mu \otimes \vec{e}_\nu,$$

$$\text{where } g^{\mu\alpha} g_{\alpha\nu} = \delta^\mu_\nu$$

duality of associate vectors and 1-forms:

$$\mathbf{g}(\vec{A}, \vec{B}) = \mathbf{g}^{-1}(\tilde{A}, \tilde{B}) = \vec{A} \cdot \vec{B}$$

GR: metric tensor \mathbf{g} , \mathbf{g}^{-1} , bases

\mathbf{g} can be applied to basis vectors \vec{e}_μ

we can define components (used earlier): $g_{\mu\nu} := \mathbf{g}(\vec{e}_\mu, \vec{e}_\nu)$

$$\Rightarrow \mathbf{g} = g_{\mu\nu} \tilde{e}^\mu \otimes \tilde{e}^\nu$$

$$\text{e.g. } \mathbf{g} = g_{rr} \tilde{e}^r \otimes \tilde{e}^r + g_{\theta\theta} \tilde{e}^\theta \otimes \tilde{e}^\theta$$

$$\text{inverse: } \mathbf{g}^{-1} = g^{\mu\nu} \vec{e}_\mu \otimes \vec{e}_\nu,$$

$$\text{where } g^{\mu\alpha} g_{\alpha\nu} = \delta^\mu_\nu$$

duality of associate vectors and 1-forms:

$$\mathbf{g}(\vec{A}, \vec{B}) = \mathbf{g}^{-1}(\tilde{A}, \tilde{B}) = \vec{A} \cdot \vec{B} = g_{\mu\nu} A^\mu B^\nu$$

GR: metric tensor \mathbf{g} , \mathbf{g}^{-1} , bases

\mathbf{g} can be applied to basis vectors \vec{e}_μ

we can define components (used earlier): $g_{\mu\nu} := \mathbf{g}(\vec{e}_\mu, \vec{e}_\nu)$

$$\Rightarrow \mathbf{g} = g_{\mu\nu} \tilde{e}^\mu \otimes \tilde{e}^\nu$$

$$\text{e.g. } \mathbf{g} = g_{rr} \tilde{e}^r \otimes \tilde{e}^r + g_{\theta\theta} \tilde{e}^\theta \otimes \tilde{e}^\theta$$

$$\text{inverse: } \mathbf{g}^{-1} = g^{\mu\nu} \vec{e}_\mu \otimes \vec{e}_\nu,$$

$$\text{where } g^{\mu\alpha} g_{\alpha\nu} = \delta^\mu_\nu$$

duality of associate vectors and 1-forms:

$$\mathbf{g}(\vec{A}, \vec{B}) = \mathbf{g}^{-1}(\tilde{A}, \tilde{B}) = \vec{A} \cdot \vec{B} = g_{\mu\nu} A^\mu B^\nu = g^{\mu\nu} A_\mu B_\nu$$

GR: metric tensor \mathbf{g} , \mathbf{g}^{-1} , bases

\mathbf{g} can be applied to basis vectors \vec{e}_μ

we can define components (used earlier): $g_{\mu\nu} := \mathbf{g}(\vec{e}_\mu, \vec{e}_\nu)$

$$\Rightarrow \mathbf{g} = g_{\mu\nu} \tilde{e}^\mu \otimes \tilde{e}^\nu$$

$$\text{e.g. } \mathbf{g} = g_{rr} \tilde{e}^r \otimes \tilde{e}^r + g_{\theta\theta} \tilde{e}^\theta \otimes \tilde{e}^\theta$$

$$\text{inverse: } \mathbf{g}^{-1} = g^{\mu\nu} \vec{e}_\mu \otimes \vec{e}_\nu,$$

$$\text{where } g^{\mu\alpha} g_{\alpha\nu} = \delta^\mu_\nu$$

duality of associate vectors and 1-forms:

$$\mathbf{g}(\vec{A}, \vec{B}) = \mathbf{g}^{-1}(\tilde{A}, \tilde{B}) = \vec{A} \cdot \vec{B} = g_{\mu\nu} A^\mu B^\nu = g^{\mu\nu} A_\mu B_\nu$$

$$\text{lower an index: } g_{\mu\nu} A^\mu = A_\nu$$

GR: metric tensor \mathbf{g} , \mathbf{g}^{-1} , bases

\mathbf{g} can be applied to basis vectors \vec{e}_μ

we can define components (used earlier): $g_{\mu\nu} := \mathbf{g}(\vec{e}_\mu, \vec{e}_\nu)$

$$\Rightarrow \mathbf{g} = g_{\mu\nu} \tilde{e}^\mu \otimes \tilde{e}^\nu$$

$$\text{e.g. } \mathbf{g} = g_{rr} \tilde{e}^r \otimes \tilde{e}^r + g_{\theta\theta} \tilde{e}^\theta \otimes \tilde{e}^\theta$$

$$\text{inverse: } \mathbf{g}^{-1} = g^{\mu\nu} \vec{e}_\mu \otimes \vec{e}_\nu,$$

$$\text{where } g^{\mu\alpha} g_{\alpha\nu} = \delta^\mu_\nu$$

duality of associate vectors and 1-forms:

$$\mathbf{g}(\vec{A}, \vec{B}) = \mathbf{g}^{-1}(\tilde{A}, \tilde{B}) = \vec{A} \cdot \vec{B} = g_{\mu\nu} A^\mu B^\nu = g^{\mu\nu} A_\mu B_\nu$$

$$\text{lower index: } g_{\mu\nu} A^\mu = A_\nu$$

$$\text{raise index: } g^{\mu\nu} B_\nu = B^\mu$$

GR: what is a coordinate?

a coordinate, e.g. x^0 or x^1 is a scalar field on the 4-manifold



GR: what is a coordinate?

a coordinate system x^μ = set of four scalar fields on the 4-manifold



GR: what is a coordinate?

a coordinate system x^μ = set of four scalar fields on the 4-manifold

(Bertschinger writes $x^\mu_{\mathbf{x}}$ to show dependence on position \mathbf{x} in manifold \neq vector space)

GR: what is a coordinate?

a coordinate system x^μ = set of four scalar fields on the 4-manifold

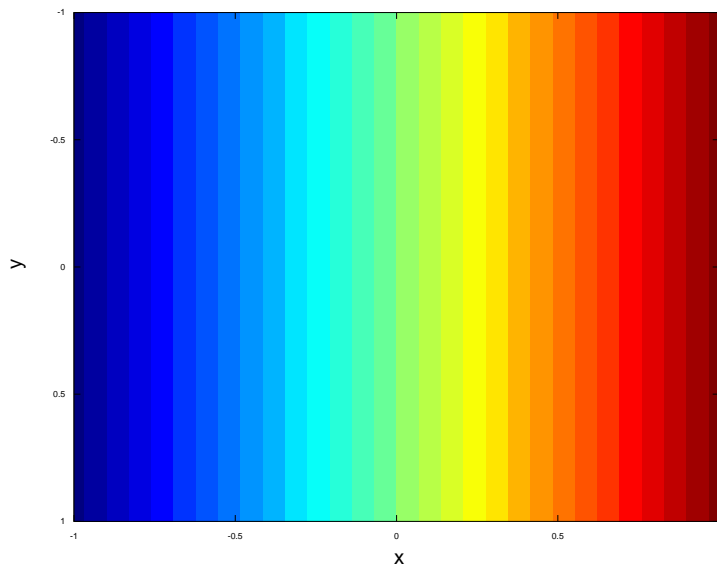
x^μ are differentiable *almost everywhere*



GR: what is a coordinate?

a coordinate system x^μ = set of four scalar fields on the 4-manifold

x^μ are differentiable *almost everywhere*

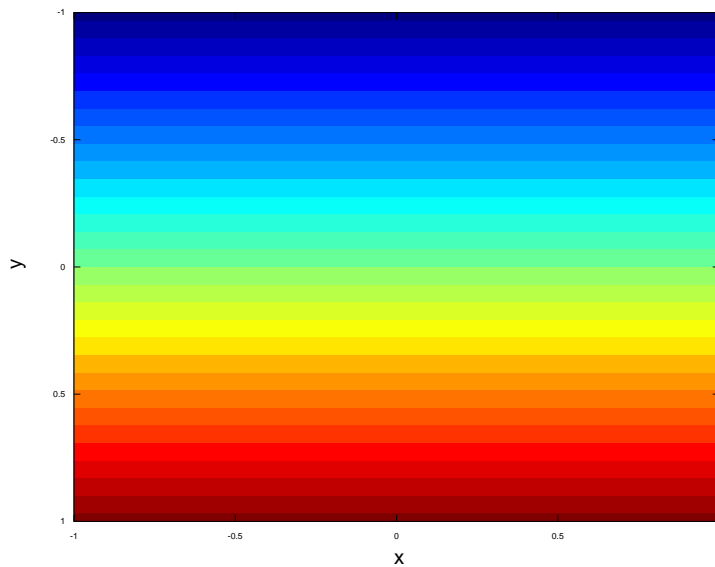


e.g. on \mathbb{R}^2

GR: what is a coordinate?

a coordinate system x^μ = set of four scalar fields on the 4-manifold

x^μ are differentiable *almost everywhere*

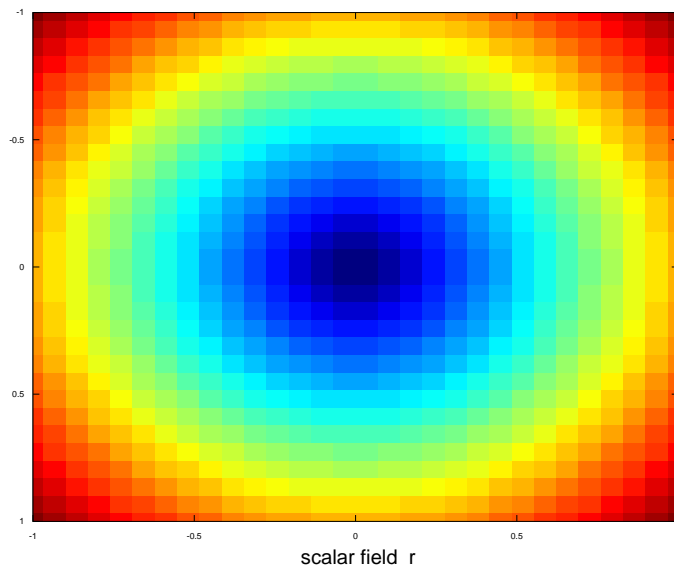


e.g. on \mathbb{R}^2

GR: what is a coordinate?

a coordinate system x^μ = set of four scalar fields on the 4-manifold

x^μ are differentiable *almost everywhere*

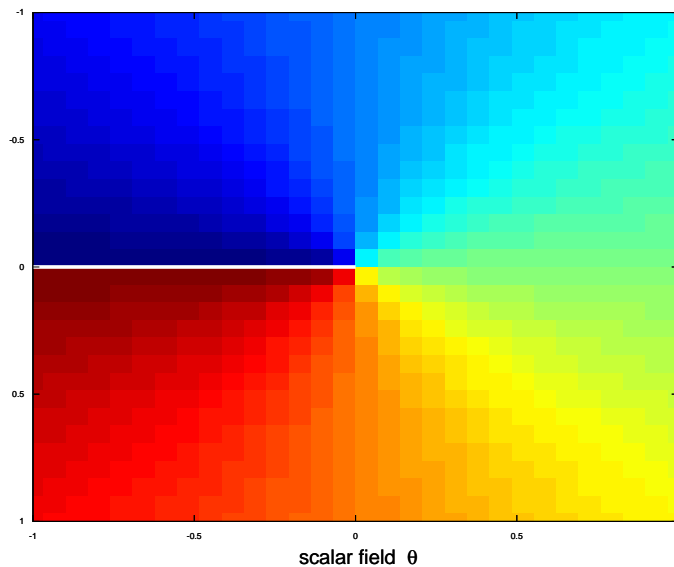


e.g. on \mathbb{R}^2

GR: what is a coordinate?

a coordinate system x^μ = set of four scalar fields on the 4-manifold

x^μ are differentiable *almost everywhere*

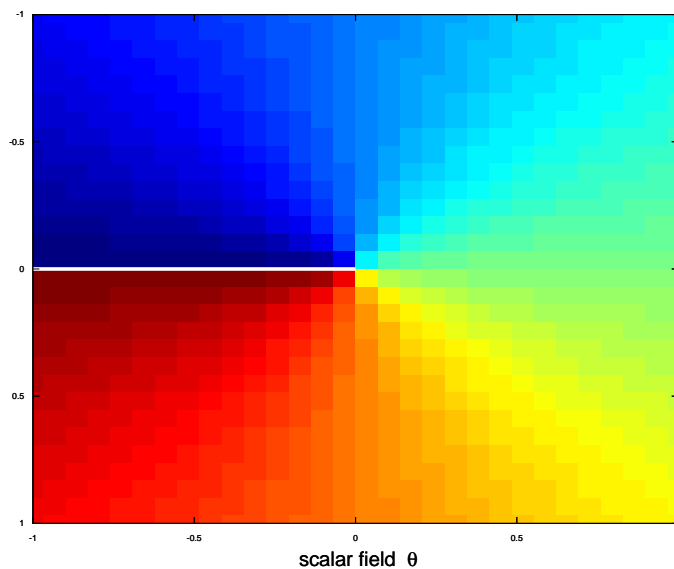


e.g. on \mathbb{R}^2

GR: what is a coordinate?

a coordinate system x^μ = set of four scalar fields on the 4-manifold

x^μ are differentiable *almost everywhere*



e.g. on \mathbb{R}^2

coordinate singularity \neq singularity in manifold

GR: what is a coordinate basis?

coordinate basis: $\vec{e}_\mu, \tilde{e}^\nu$ chosen so that:

$$d\vec{x} = dx^\mu \vec{e}_\mu \text{ and}$$



GR: what is a coordinate basis?

coordinate basis: $\vec{e}_\mu, \tilde{e}^\nu$ chosen so that:

$$d\vec{x} = dx^\mu \vec{e}_\mu \text{ and}$$

$$df = \langle \tilde{d}f, d\vec{x} \rangle \text{ for any scalar field } f \text{ coordinate-free}$$

where $\tilde{d} = \tilde{e}^\mu \partial_\mu$ in a coordinate basis



GR: what is a coordinate basis?

coordinate basis: $\vec{e}_\mu, \tilde{e}^\nu$ chosen so that:

$$d\vec{x} = dx^\mu \vec{e}_\mu \text{ and}$$

$$df = \langle \tilde{d}f, d\vec{x} \rangle \text{ for any scalar field } f \text{ coordinate-free}$$

where $\tilde{d} = \tilde{e}^\mu \partial_\mu$ in a coordinate basis

(Bertschinger writes $\tilde{\nabla}$ for the gradient \tilde{d})



GR: what is a coordinate basis?

coordinate basis: $\vec{e}_\mu, \tilde{e}^\nu$ chosen so that:

$$d\vec{x} = dx^\mu \vec{e}_\mu \text{ and}$$

$$df = \langle \tilde{d}f, d\vec{x} \rangle \text{ for any scalar field } f \text{ coordinate-free}$$

where $\tilde{d} = \tilde{e}^\mu \partial_\mu$ in a coordinate basis

$$\text{check: } df = \langle \tilde{d}f, d\vec{x} \rangle$$



GR: what is a coordinate basis?

coordinate basis: $\vec{e}_\mu, \tilde{e}^\nu$ chosen so that:

$$d\vec{x} = dx^\mu \vec{e}_\mu \text{ and}$$

$df = \langle \tilde{d}f, d\vec{x} \rangle$ for any scalar field f **coordinate-free**

where $\tilde{d} = \tilde{e}^\mu \partial_\mu$ in a coordinate basis

$$\text{check: } df = \langle \tilde{d}f, d\vec{x} \rangle$$

$$= \langle \tilde{e}^\mu \partial_\mu f, dx^\nu \vec{e}_\nu \rangle$$



GR: what is a coordinate basis?

coordinate basis: $\vec{e}_\mu, \tilde{e}^\nu$ chosen so that:

$$d\vec{x} = dx^\mu \vec{e}_\mu \text{ and}$$

$$df = \langle \tilde{d}f, d\vec{x} \rangle \text{ for any scalar field } f \text{ coordinate-free}$$

where $\tilde{d} = \tilde{e}^\mu \partial_\mu$ in a coordinate basis

$$\text{check: } df = \langle \tilde{d}f, d\vec{x} \rangle$$

$$= \langle \tilde{e}^\mu \partial_\mu f, dx^\nu \vec{e}_\nu \rangle$$

$$= (\partial_\mu f) dx^\nu \langle \tilde{e}^\mu, \vec{e}_\nu \rangle \text{ since scalars commute}$$



GR: what is a coordinate basis?

coordinate basis: $\vec{e}_\mu, \tilde{e}^\nu$ chosen so that:

$$d\vec{x} = dx^\mu \vec{e}_\mu \text{ and}$$

$$df = \langle \tilde{d}f, d\vec{x} \rangle \text{ for any scalar field } f \text{ coordinate-free}$$

where $\tilde{d} = \tilde{e}^\mu \partial_\mu$ in a coordinate basis

$$\text{check: } df = \langle \tilde{d}f, d\vec{x} \rangle$$

$$= \langle \tilde{e}^\mu \partial_\mu f, dx^\nu \vec{e}_\nu \rangle$$

$$= (\partial_\mu f) dx^\nu \langle \tilde{e}^\mu, \vec{e}_\nu \rangle \text{ since scalars commute}$$

$$\text{i.e. } df = (\partial_\mu f) dx^\mu \text{ since } \langle \tilde{e}^\mu, \vec{e}_\nu \rangle = \delta_\nu^\mu$$



GR: what is a coordinate basis?

coordinate basis: $\vec{e}_\mu, \tilde{e}^\nu$ chosen so that:

$$d\vec{x} = dx^\mu \vec{e}_\mu \text{ and}$$

$$df = \langle \tilde{d}f, d\vec{x} \rangle \text{ for any scalar field } f \text{ coordinate-free}$$

where $\tilde{d} = \tilde{e}^\mu \partial_\mu$ in a coordinate basis

$$\text{check: } df = \langle \tilde{d}f, d\vec{x} \rangle$$

$$= \langle \tilde{e}^\mu \partial_\mu f, dx^\nu \vec{e}_\nu \rangle$$

$$= (\partial_\mu f) dx^\nu \langle \tilde{e}^\mu, \vec{e}_\nu \rangle \text{ since scalars commute}$$

$$\text{i.e. } df = \sum_\mu \frac{\partial f}{\partial x^\mu} dx^\mu$$



GR: what is a coordinate basis?

coordinate basis: $\vec{e}_\mu, \tilde{e}^\nu$ chosen so that:

$$d\vec{x} = dx^\mu \vec{e}_\mu \text{ and}$$

$$df = \langle \tilde{d}f, d\vec{x} \rangle \text{ for any scalar field } f \text{ coordinate-free}$$

where $\tilde{d} = \tilde{e}^\mu \partial_\mu$ in a coordinate basis

$$\text{check: } df = \langle \tilde{d}f, d\vec{x} \rangle$$

$$= \langle \tilde{e}^\mu \partial_\mu f, dx^\nu \vec{e}_\nu \rangle$$

$$= (\partial_\mu f) dx^\nu \langle \tilde{e}^\mu, \vec{e}_\nu \rangle \text{ since scalars commute}$$

$$\text{i.e. } df = (\partial_\mu f) dx^\mu$$

GR: what is a coordinate basis?

coordinate basis: $\vec{e}_\mu, \tilde{e}^\nu$ chosen so that:

$$d\vec{x} = dx^\mu \vec{e}_\mu \text{ and}$$

$$df = \langle \tilde{d}f, d\vec{x} \rangle \text{ for any scalar field } f \text{ coordinate-free}$$

where $\tilde{d} = \tilde{e}^\mu \partial_\mu$ in a coordinate basis

$$\text{check: } df = \langle \tilde{d}f, d\vec{x} \rangle$$

$$= \langle \tilde{e}^\mu \partial_\mu f, dx^\nu \vec{e}_\nu \rangle$$

$$= (\partial_\mu f) dx^\nu \langle \tilde{e}^\mu, \vec{e}_\nu \rangle \text{ since scalars commute}$$

$$\text{i.e. } df = (\partial_\mu f) dx^\mu$$

$$\text{check: } \tilde{d}x^\mu = \tilde{e}^\nu \partial_\nu x^\mu$$



GR: what is a coordinate basis?

coordinate basis: $\vec{e}_\mu, \tilde{e}^\nu$ chosen so that:

$$d\vec{x} = dx^\mu \vec{e}_\mu \text{ and}$$

$$df = \langle \tilde{d}f, d\vec{x} \rangle \text{ for any scalar field } f \text{ coordinate-free}$$

where $\tilde{d} = \tilde{e}^\mu \partial_\mu$ in a coordinate basis

$$\text{check: } df = \langle \tilde{d}f, d\vec{x} \rangle$$

$$= \langle \tilde{e}^\mu \partial_\mu f, dx^\nu \vec{e}_\nu \rangle$$

$$= (\partial_\mu f) dx^\nu \langle \tilde{e}^\mu, \vec{e}_\nu \rangle \text{ since scalars commute}$$

$$\text{i.e. } df = (\partial_\mu f) dx^\mu$$

$$\text{check: } \tilde{d}x^\mu = \tilde{e}^\nu \partial_\nu x^\mu$$

$$= \sum_\nu \tilde{e}^\nu \partial_\nu x^\mu$$



GR: what is a coordinate basis?

coordinate basis: $\vec{e}_\mu, \tilde{e}^\nu$ chosen so that:

$$d\vec{x} = dx^\mu \vec{e}_\mu \text{ and}$$

$$df = \langle \tilde{d}f, d\vec{x} \rangle \text{ for any scalar field } f \text{ coordinate-free}$$

where $\tilde{d} = \tilde{e}^\mu \partial_\mu$ in a coordinate basis

$$\text{check: } df = \langle \tilde{d}f, d\vec{x} \rangle$$

$$= \langle \tilde{e}^\mu \partial_\mu f, dx^\nu \vec{e}_\nu \rangle$$

$$= (\partial_\mu f) dx^\nu \langle \tilde{e}^\mu, \vec{e}_\nu \rangle \text{ since scalars commute}$$

$$\text{i.e. } df = (\partial_\mu f) dx^\mu$$

$$\text{check: } \tilde{d}x^\mu = \tilde{e}^\nu \partial_\nu x^\mu$$

$$= \sum_\nu \tilde{e}^\nu \frac{\partial}{\partial x^\nu} x^\mu$$



GR: what is a coordinate basis?

coordinate basis: $\vec{e}_\mu, \tilde{e}^\nu$ chosen so that:

$$d\vec{x} = dx^\mu \vec{e}_\mu \text{ and}$$

$$df = \langle \tilde{d}f, d\vec{x} \rangle \text{ for any scalar field } f \text{ coordinate-free}$$

where $\tilde{d} = \tilde{e}^\mu \partial_\mu$ in a coordinate basis

$$\text{check: } df = \langle \tilde{d}f, d\vec{x} \rangle$$

$$= \langle \tilde{e}^\mu \partial_\mu f, dx^\nu \vec{e}_\nu \rangle$$

$$= (\partial_\mu f) dx^\nu \langle \tilde{e}^\mu, \vec{e}_\nu \rangle \text{ since scalars commute}$$

$$\text{i.e. } df = (\partial_\mu f) dx^\mu$$

$$\text{check: } \tilde{d}x^\mu = \tilde{e}^\nu \partial_\nu x^\mu$$

$$= \tilde{e}^\mu$$



GR: metric using $d\vec{x}$

we now have





GR: metric using $d\vec{x}$

we now have

$$ds^2 := |d\vec{x}|^2$$





GR: metric using $d\vec{x}$

we now have

$$ds^2 := |d\vec{x}|^2 = \mathbf{g}(d\vec{x}, d\vec{x})$$



GR: metric using $d\vec{x}$



we now have

$$ds^2 := |d\vec{x}|^2 = \mathbf{g}(d\vec{x}, d\vec{x}) = d\vec{x} \cdot d\vec{x} \text{ coordinate-free}$$



GR: metric using $d\vec{x}$



we now have

$$ds^2 := |d\vec{x}|^2 = \mathbf{g}(d\vec{x}, d\vec{x}) = d\vec{x} \cdot d\vec{x} \text{ coordinate-free}$$

$$ds^2 = g_{\mu\nu} dx^\mu dx^\nu \text{ if } x^\mu \text{ are a coordinate basis}$$



GR: e.g. Euclidean g on \mathbb{R}^2

$g_{r\theta}$ and g_{xy}

$$ds^2 = dx^2 + dy^2 = dr^2 + r^2 d\theta^2$$



GR: e.g. Euclidean g on \mathbb{R}^2

$g_{r\theta}$ and g_{xy}

$$ds^2 = dx^2 + dy^2 = dr^2 + r^2 d\theta^2$$

$$\vec{e}_x \cdot \vec{e}_x = 1 = \vec{e}_y \cdot \vec{e}_y, \text{ others zero}$$



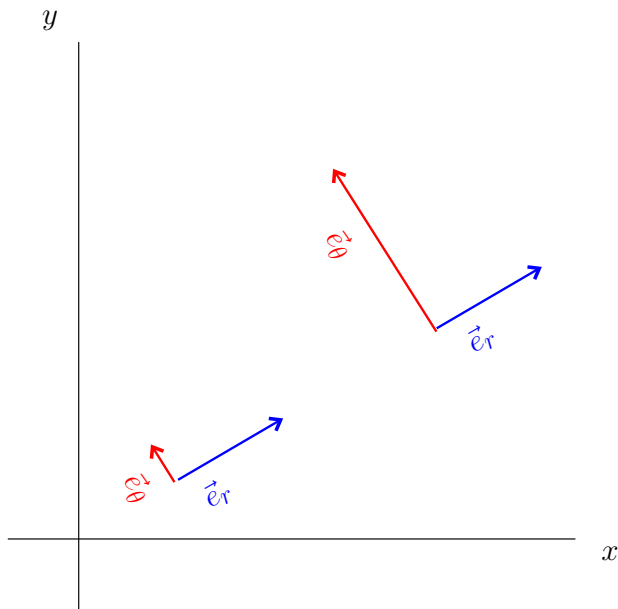
GR: e.g. Euclidean g on \mathbb{R}^2

$g_{r\theta}$ and g_{xy}

$$ds^2 = dx^2 + dy^2 = dr^2 + r^2 d\theta^2$$

$$\vec{e}_x \cdot \vec{e}_x = 1 = \vec{e}_y \cdot \vec{e}_y, \text{ others zero}$$

$$\vec{e}_r \cdot \vec{e}_r = 1, \vec{e}_\theta \cdot \vec{e}_\theta = r^2 \neq 1$$



GR: e.g. Euclidean g on \mathbb{R}^2

$g_{r\theta}$ and g_{xy}

$$ds^2 = dx^2 + dy^2 = dr^2 + r^2 d\theta^2$$

$$\vec{e}_x \cdot \vec{e}_x = 1 = \vec{e}_y \cdot \vec{e}_y, \text{ others zero}$$

$$\vec{e}_r \cdot \vec{e}_r = 1, \vec{e}_\theta \cdot \vec{e}_\theta = r^2 \neq 1$$

$$g^{\mu\alpha} g_{\alpha\nu} = \delta^\mu_\nu \Rightarrow g^{xx} = 1 = g^{yy}, g^{xy} = 0 = g^{yx}$$

GR: e.g. Euclidean g on \mathbb{R}^2

$g_{r\theta}$ and g_{xy}

$$ds^2 = dx^2 + dy^2 = dr^2 + r^2 d\theta^2$$

$\vec{e}_x \cdot \vec{e}_x = 1 = \vec{e}_y \cdot \vec{e}_y$, others zero

$$\vec{e}_r \cdot \vec{e}_r = 1, \vec{e}_\theta \cdot \vec{e}_\theta = r^2 \neq 1$$

$$g^{\mu\alpha} g_{\alpha\nu} = \delta^\mu_\nu \Rightarrow g^{xx} = 1 = g^{yy}, g^{xy} = 0 = g^{yx}$$

$$\text{but } g^{rr} = 1 \neq g^{\theta\theta} = r^{-2}, g^{r\theta} = 0 = g^{\theta r}$$

GR: e.g. Euclidean g on \mathbb{R}^2

$g_{r\theta}$ and g_{xy}

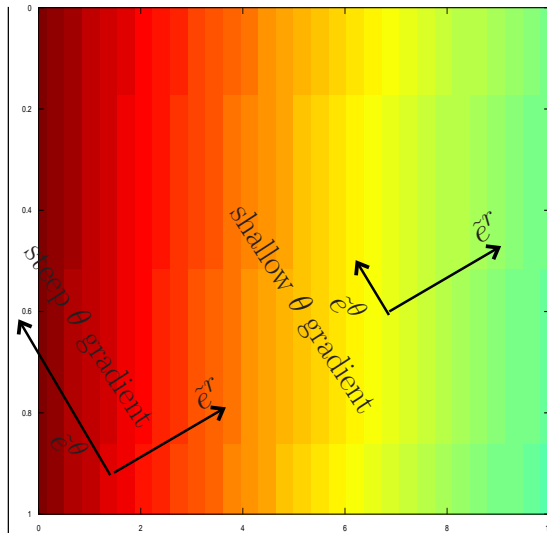
$$ds^2 = dx^2 + dy^2 = dr^2 + r^2 d\theta^2$$

$$\vec{e}_x \cdot \vec{e}_x = 1 = \vec{e}_y \cdot \vec{e}_y, \text{ others zero}$$

$$\vec{e}_r \cdot \vec{e}_r = 1, \vec{e}_\theta \cdot \vec{e}_\theta = r^2 \neq 1$$

$$g^{\mu\alpha} g_{\alpha\nu} = \delta^\mu_\nu \Rightarrow g^{xx} = 1 = g^{yy}, g^{xy} = 0 = g^{yx}$$

$$\text{but } g^{rr} = 1 \neq g^{\theta\theta} = r^{-2}, g^{r\theta} = 0 = g^{\theta r}$$



GR: e.g. Euclidean g on \mathbb{R}^2

$g_{r\theta}$ and g_{xy}

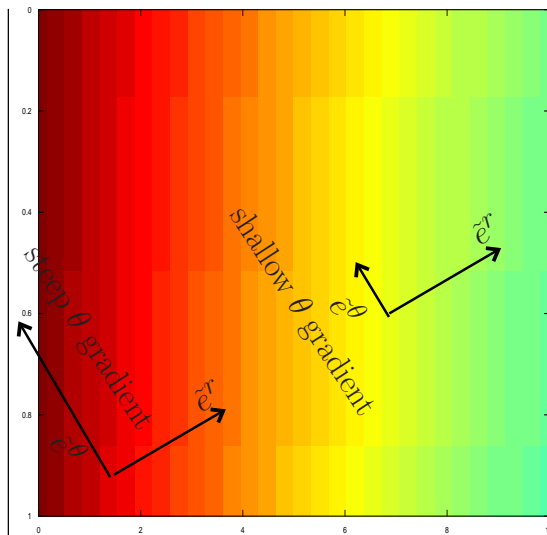
$$ds^2 = dx^2 + dy^2 = dr^2 + r^2 d\theta^2$$

$$\vec{e}_x \cdot \vec{e}_x = 1 = \vec{e}_y \cdot \vec{e}_y, \text{ others zero}$$

$$\vec{e}_r \cdot \vec{e}_r = 1, \vec{e}_\theta \cdot \vec{e}_\theta = r^2 \neq 1$$

$$g^{\mu\alpha} g_{\alpha\nu} = \delta^\mu_\nu \Rightarrow g^{xx} = 1 = g^{yy}, g^{xy} = 0 = g^{yx}$$

$$\text{but } g^{rr} = 1 \neq g^{\theta\theta} = r^{-2}, g^{r\theta} = 0 = g^{\theta r}$$



$$\text{so } \tilde{e}^r \cdot \tilde{e}^r = 1, \tilde{e}^\theta \cdot \tilde{e}^\theta = r^{-2} \neq 1$$

GR: gradient of a vector: $\nabla \vec{A}$

gradient of scalar field: $\tilde{d}\phi \equiv \tilde{\nabla}\phi$



GR: gradient of a vector: $\nabla \vec{A}$

what is gradient of vector field $\tilde{\nabla} \vec{A}$?



GR: gradient of a vector: $\nabla \vec{A}$

$$\tilde{\nabla} \vec{A} = \tilde{\nabla}(A^\nu \vec{e}_\nu)$$



GR: gradient of a vector: $\nabla \vec{A}$

$$\begin{aligned}\tilde{\nabla} \vec{A} &= \tilde{\nabla}(A^\nu \vec{e}_\nu) \\ &= \tilde{e}^\mu \partial_\mu (A^\nu \vec{e}_\nu)\end{aligned}$$



GR: gradient of a vector: $\nabla \vec{A}$

$$\tilde{\nabla} \vec{A} = \tilde{\nabla}(A^\nu \vec{e}_\nu)$$

$$= \tilde{e}^\mu \partial_\mu (A^\nu \vec{e}_\nu)$$

$$= \tilde{e}^\mu \otimes [(\partial_\mu A^\nu) \vec{e}_\nu + A^\nu \partial_\mu \vec{e}_\nu] \text{ by product rule and linearity}$$

GR: gradient of a vector: $\nabla \vec{A}$

$$\tilde{\nabla} \vec{A} = \tilde{\nabla}(A^\nu \vec{e}_\nu)$$

$$= \tilde{e}^\mu \partial_\mu (A^\nu \vec{e}_\nu)$$

$$= \partial_\mu A^\nu \tilde{e}^\mu \otimes \vec{e}_\nu + A^\nu \tilde{e}^\mu \otimes \partial_\mu \vec{e}_\nu$$



GR: gradient of a vector: $\nabla \vec{A}$

$$\tilde{\nabla} \vec{A} = \tilde{\nabla}(A^\nu \vec{e}_\nu)$$

$$= \tilde{e}^\mu \partial_\mu (A^\nu \vec{e}_\nu)$$

$$= \partial_\mu A^\nu \tilde{e}^\mu \otimes \vec{e}_\nu + A^\nu \tilde{e}^\mu \otimes \partial_\mu \vec{e}_\nu$$

give a name to the second part: it must be a linear combination of basis vectors \vec{e}_λ

GR: gradient of a vector: $\nabla \vec{A}$

$$\tilde{\nabla} \vec{A} = \tilde{\nabla}(A^\nu \vec{e}_\nu)$$

$$= \tilde{e}^\mu \partial_\mu (A^\nu \vec{e}_\nu)$$

$$= \partial_\mu A^\nu \tilde{e}^\mu \otimes \vec{e}_\nu + A^\nu \tilde{e}^\mu \otimes \partial_\mu \vec{e}_\nu$$

define $\Gamma_{\nu\mu}^\lambda \vec{e}_\lambda := \partial_\mu \vec{e}_\nu$ Christoffel symbols of second kind
(symmetric defn)

GR: gradient of a vector: $\nabla \vec{A}$

$$\tilde{\nabla} \vec{A} = \tilde{\nabla}(A^\nu \vec{e}_\nu)$$

$$= \tilde{e}^\mu \partial_\mu (A^\nu \vec{e}_\nu)$$

$$= \partial_\mu A^\nu \tilde{e}^\mu \otimes \vec{e}_\nu + A^\nu \tilde{e}^\mu \otimes \partial_\mu \vec{e}_\nu$$

define $\Gamma_{\nu\mu}^\lambda \vec{e}_\lambda := \partial_\mu \vec{e}_\nu$ Christoffel symbols of second kind
(symmetric defn)

$$\text{so } \tilde{\nabla} \vec{A} = \partial_\mu A^\nu \tilde{e}^\mu \otimes \vec{e}_\nu + A^\nu \tilde{e}^\mu \otimes \Gamma_{\nu\mu}^\lambda \vec{e}_\lambda$$

GR: gradient of a vector: $\nabla \vec{A}$



$$\tilde{\nabla} \vec{A} = \tilde{\nabla}(A^\nu \vec{e}_\nu)$$

$$= \tilde{e}^\mu \partial_\mu (A^\nu \vec{e}_\nu)$$

$$= \partial_\mu A^\nu \tilde{e}^\mu \otimes \vec{e}_\nu + A^\nu \tilde{e}^\mu \otimes \partial_\mu \vec{e}_\nu$$

define $\Gamma_{\nu\mu}^\lambda \vec{e}_\lambda := \partial_\mu \vec{e}_\nu$ Christoffel symbols of second kind
(symmetric defn)

$$\text{so } \tilde{\nabla} \vec{A} = \partial_\mu A^\nu \tilde{e}^\mu \otimes \vec{e}_\nu + A^\nu \tilde{e}^\mu \otimes \Gamma_{\nu\mu}^\lambda \vec{e}_\lambda$$

$$= \partial_\mu A^\nu \tilde{e}^\mu \otimes \vec{e}_\nu + A^\nu \Gamma_{\nu\mu}^\lambda \tilde{e}^\mu \otimes \vec{e}_\lambda \text{ since any } \Gamma_{\nu\mu}^\lambda \text{ is a scalar}$$



GR: gradient of a vector: $\nabla \vec{A}$

$$\tilde{\nabla} \vec{A} = \tilde{\nabla}(A^\nu \vec{e}_\nu)$$

$$= \tilde{e}^\mu \partial_\mu (A^\nu \vec{e}_\nu)$$

$$= \partial_\mu A^\nu \tilde{e}^\mu \otimes \vec{e}_\nu + A^\nu \tilde{e}^\mu \otimes \partial_\mu \vec{e}_\nu$$

define $\Gamma_{\nu\mu}^\lambda \vec{e}_\lambda := \partial_\mu \vec{e}_\nu$ Christoffel symbols of second kind
(symmetric defn)

$$\text{so } \tilde{\nabla} \vec{A} = \partial_\mu A^\nu \tilde{e}^\mu \otimes \vec{e}_\nu + A^\nu \tilde{e}^\mu \otimes \Gamma_{\nu\mu}^\lambda \vec{e}_\lambda$$

$$= \partial_\mu A^\nu \tilde{e}^\mu \otimes \vec{e}_\nu + A^\lambda \Gamma_{\lambda\mu}^\nu \tilde{e}^\mu \otimes \vec{e}_\nu$$

since name of summation index is arbitrary, e.g.

$$\sum_\lambda x^{-2\lambda} = \sum_\mu x^{-2\mu} = \sum_\nu x^{-2\nu}$$

GR: gradient of a vector: $\nabla \vec{A}$



$$\tilde{\nabla} \vec{A} = \tilde{\nabla}(A^\nu \vec{e}_\nu)$$

$$= \tilde{e}^\mu \partial_\mu (A^\nu \vec{e}_\nu)$$

$$= \partial_\mu A^\nu \tilde{e}^\mu \otimes \vec{e}_\nu + A^\nu \tilde{e}^\mu \otimes \partial_\mu \vec{e}_\nu$$

define $\Gamma_{\nu\mu}^\lambda \vec{e}_\lambda := \partial_\mu \vec{e}_\nu$ Christoffel symbols of second kind
(symmetric defn)

$$\text{so } \tilde{\nabla} \vec{A} = \partial_\mu A^\nu \tilde{e}^\mu \otimes \vec{e}_\nu + A^\nu \tilde{e}^\mu \otimes \Gamma_{\nu\mu}^\lambda \vec{e}_\lambda$$

$$= \partial_\mu A^\nu \tilde{e}^\mu \otimes \vec{e}_\nu + A^\lambda \Gamma_{\lambda\mu}^\nu \tilde{e}^\mu \otimes \vec{e}_\nu$$

$$= (\partial_\mu A^\nu + A^\lambda \Gamma_{\lambda\mu}^\nu) \tilde{e}^\mu \otimes \vec{e}_\nu$$



GR: gradient of a vector: $\nabla \vec{A}$

$$\tilde{\nabla} \vec{A} = \tilde{\nabla}(A^\nu \vec{e}_\nu)$$

$$= \tilde{e}^\mu \partial_\mu (A^\nu \vec{e}_\nu)$$

$$= \partial_\mu A^\nu \tilde{e}^\mu \otimes \vec{e}_\nu + A^\nu \tilde{e}^\mu \otimes \partial_\mu \vec{e}_\nu$$

define $\Gamma_{\nu\mu}^\lambda \vec{e}_\lambda := \partial_\mu \vec{e}_\nu$ Christoffel symbols of second kind
(symmetric defn)

$$\text{so } \tilde{\nabla} \vec{A} = \partial_\mu A^\nu \tilde{e}^\mu \otimes \vec{e}_\nu + A^\nu \tilde{e}^\mu \otimes \Gamma_{\nu\mu}^\lambda \vec{e}_\lambda$$

$$= \partial_\mu A^\nu \tilde{e}^\mu \otimes \vec{e}_\nu + A^\lambda \Gamma_{\lambda\mu}^\nu \tilde{e}^\mu \otimes \vec{e}_\nu$$

$$= (\partial_\mu A^\nu + A^\lambda \Gamma_{\lambda\mu}^\nu) \tilde{e}^\mu \otimes \vec{e}_\nu$$

$$\nabla_\mu A^\nu := A^\nu_{;\mu} := \partial_\mu A^\nu + A^\lambda \Gamma_{\lambda\mu}^\nu$$

w:covariant derivative of vector

GR: gradient of a vector: $\nabla \vec{A}$

$$\tilde{\nabla} \vec{A} = \tilde{\nabla}(A^\nu \vec{e}_\nu)$$

$$= \tilde{e}^\mu \partial_\mu (A^\nu \vec{e}_\nu)$$

$$= \partial_\mu A^\nu \tilde{e}^\mu \otimes \vec{e}_\nu + A^\nu \tilde{e}^\mu \otimes \partial_\mu \vec{e}_\nu$$

define $\Gamma_{\nu\mu}^\lambda \vec{e}_\lambda := \partial_\mu \vec{e}_\nu$ Christoffel symbols of second kind
(symmetric defn)

$$\text{so } \tilde{\nabla} \vec{A} = \partial_\mu A^\nu \tilde{e}^\mu \otimes \vec{e}_\nu + A^\nu \tilde{e}^\mu \otimes \Gamma_{\nu\mu}^\lambda \vec{e}_\lambda$$

$$= \partial_\mu A^\nu \tilde{e}^\mu \otimes \vec{e}_\nu + A^\lambda \Gamma_{\lambda\mu}^\nu \tilde{e}^\mu \otimes \vec{e}_\nu$$

$$= (\partial_\mu A^\nu + A^\lambda \Gamma_{\lambda\mu}^\nu) \tilde{e}^\mu \otimes \vec{e}_\nu$$

$$\nabla_\mu A^\nu := A^\nu_{;\mu} := A^\nu_{,\mu} + A^\lambda \Gamma_{\lambda\mu}^\nu$$

w:covariant derivative of vector



GR: $\tilde{\nabla}$ and $\Gamma^\nu_{\lambda\mu}$

mathematically deeper: $\tilde{\nabla}$, usually written just as ∇ , is the w:Levi-Civita connection



GR: $\tilde{\nabla}$ and $\Gamma^\nu_{\lambda\mu}$

mathematically deeper: $\tilde{\nabla}$, usually written just as ∇ , is the w:Levi-Civita connection

warning: $\Gamma^\nu_{\lambda\mu}$ are NOT the components of a tensor

GR: $\tilde{\nabla}$ and $\Gamma^\nu_{\lambda\mu}$

mathematically deeper: $\tilde{\nabla}$, usually written just as ∇ , is the w:Levi-Civita connection

warning: $\Gamma^\nu_{\lambda\mu}$ are NOT the components of a tensor

- $\tilde{\nabla}$ applied to a (m, n) -tensor field on a manifold gives an $(m, n + 1)$ -tensor field

GR: $\tilde{\nabla}$ and $\Gamma^\nu_{\lambda\mu}$

mathematically deeper: $\tilde{\nabla}$, usually written just as ∇ , is the w:Levi-Civita connection

warning: $\Gamma^\nu_{\lambda\mu}$ are NOT the components of a tensor

- $\tilde{\nabla}$ applied to a (m, n) -tensor field on a manifold gives an $(m, n + 1)$ -tensor field

so far we showed how $\tilde{\nabla}$ applied to a $(0, 0)$ -tensor field = scalar field ϕ gives a $(0, 1)$ -tensor field = one-form field = $(\tilde{d}\phi)_\mu \tilde{e}^\mu$

GR: $\tilde{\nabla}$ and $\Gamma^\nu_{\lambda\mu}$

mathematically deeper: $\tilde{\nabla}$, usually written just as ∇ , is the w:Levi-Civita connection

warning: $\Gamma^\nu_{\lambda\mu}$ are NOT the components of a tensor

- $\tilde{\nabla}$ applied to a (m, n) -tensor field on a manifold gives an $(m, n + 1)$ -tensor field

so far we showed how $\tilde{\nabla}$ applied to a $(0, 0)$ -tensor field = scalar field ϕ gives a $(0, 1)$ -tensor field = one-form field =

$$\nabla_\mu \phi \tilde{e}^\mu = \partial_\mu \phi \tilde{e}^\mu$$

GR: $\tilde{\nabla}$ and $\Gamma^\nu_{\lambda\mu}$

mathematically deeper: $\tilde{\nabla}$, usually written just as ∇ , is the w:Levi-Civita connection

warning: $\Gamma^\nu_{\lambda\mu}$ are NOT the components of a tensor

- $\tilde{\nabla}$ applied to a (m, n) -tensor field on a manifold gives an $(m, n + 1)$ -tensor field

so far we showed how $\tilde{\nabla}$ applied to a $(0, 0)$ -tensor field = scalar field ϕ gives a $(0, 1)$ -tensor field = one-form field = $\nabla_\mu \phi \tilde{e}^\mu = \partial_\mu \phi \tilde{e}^\mu$

and $\tilde{\nabla}$ on a $(1, 0)$ -tensor field = vector field \vec{A} gives a $(1, 1)$ -tensor with components $\nabla_\mu A^\nu = \partial_\mu A^\nu + A^\lambda \Gamma^\nu_{\lambda\mu}$

GR: $\tilde{\nabla}$ and $\Gamma^\nu_{\lambda\mu}$

mathematically deeper: $\tilde{\nabla}$, usually written just as ∇ , is the w:Levi-Civita connection

warning: $\Gamma^\nu_{\lambda\mu}$ are NOT the components of a tensor

- $\tilde{\nabla}$ applied to a (m, n) -tensor field on a manifold gives an $(m, n + 1)$ -tensor field

so far we showed how $\tilde{\nabla}$ applied to a $(0, 0)$ -tensor field = scalar field ϕ gives a $(0, 1)$ -tensor field = one-form field = $\nabla_\mu \phi \tilde{e}^\mu = \partial_\mu \phi \tilde{e}^\mu$

and $\tilde{\nabla}$ on a $(1, 0)$ -tensor field = vector field \vec{A} gives a $(1, 1)$ -tensor with components $\nabla_\mu A^\nu = \partial_\mu A^\nu + A^\lambda \Gamma^\nu_{\lambda\mu}$

- tensors: $\tilde{\nabla} \phi = \tilde{\nabla}_\mu \phi \tilde{e}^\mu,$

GR: $\tilde{\nabla}$ and $\Gamma^\nu_{\lambda\mu}$

mathematically deeper: $\tilde{\nabla}$, usually written just as ∇ , is the w:Levi-Civita connection

warning: $\Gamma^\nu_{\lambda\mu}$ are NOT the components of a tensor

- $\tilde{\nabla}$ applied to a (m, n) -tensor field on a manifold gives an $(m, n + 1)$ -tensor field

so far we showed how $\tilde{\nabla}$ applied to a $(0, 0)$ -tensor field = scalar field ϕ gives a $(0, 1)$ -tensor field = one-form field = $\nabla_\mu \phi \tilde{e}^\mu = \partial_\mu \phi \tilde{e}^\mu$

and $\tilde{\nabla}$ on a $(1, 0)$ -tensor field = vector field \vec{A} gives a $(1, 1)$ -tensor with components $\nabla_\mu A^\nu = \partial_\mu A^\nu + A^\lambda \Gamma^\nu_{\lambda\mu}$

- tensors: $\tilde{\nabla} \phi = \tilde{\nabla}_\mu \phi \tilde{e}^\mu$, $\tilde{\nabla} \vec{A} = \left(\partial_\mu A^\nu + A^\lambda \Gamma^\nu_{\lambda\mu} \right) \tilde{e}^\mu \otimes \vec{e}_\nu$

GR: $\tilde{\nabla}$ and $\Gamma^\nu_{\lambda\mu}$

mathematically deeper: $\tilde{\nabla}$, usually written just as ∇ , is the w:Levi-Civita connection

warning: $\Gamma^\nu_{\lambda\mu}$ are NOT the components of a tensor

- $\tilde{\nabla}$ applied to a (m, n) -tensor field on a manifold gives an $(m, n + 1)$ -tensor field

so far we showed how $\tilde{\nabla}$ applied to a $(0, 0)$ -tensor field = scalar field ϕ gives a $(0, 1)$ -tensor field = one-form field = $\nabla_\mu \phi \tilde{e}^\mu = \partial_\mu \phi \tilde{e}^\mu$

and $\tilde{\nabla}$ on a $(1, 0)$ -tensor field = vector field \vec{A} gives a $(1, 1)$ -tensor with components $\nabla_\mu A^\nu = \partial_\mu A^\nu + A^\lambda \Gamma^\nu_{\lambda\mu}$

- tensors: $\tilde{\nabla} \phi = \tilde{\nabla}_\mu \phi \tilde{e}^\mu$, $\tilde{\nabla} \vec{A} = \left(\partial_\mu A^\nu + A^\lambda \Gamma^\nu_{\lambda\mu} \right) \tilde{e}^\mu \otimes \vec{e}_\nu$

- not components of tensor: $\Gamma^\nu_{\lambda\mu}$

GR: gradient of one-form $\tilde{\nabla} \tilde{A}$

how does a one-form change with position? $\tilde{\nabla} \tilde{A} = ?$



GR: gradient of one-form $\tilde{\nabla} \tilde{A}$

evaluating $\tilde{\nabla} \tilde{A}$ as we did $\tilde{\nabla} \vec{A}$ shows that we again need $\partial_\mu \tilde{e}^\nu = F^\nu_{\lambda\mu} \tilde{e}^\lambda$ for some coefficients $F^\nu_{\lambda\mu}$

GR: gradient of one-form $\tilde{\nabla} \tilde{A}$

evaluating $\tilde{\nabla} \tilde{A}$ as we did $\tilde{\nabla} \vec{A}$ shows that we again need $\partial_\mu \tilde{e}^\nu = F^\nu_{\lambda\mu} \tilde{e}^\lambda$ for some coefficients $F^\nu_{\lambda\mu}$

how can we relate $\Gamma^\nu_{\lambda\mu}$ to $F^\nu_{\lambda\mu}$?

GR: gradient of one-form $\tilde{\nabla} \tilde{A}$

evaluating $\tilde{\nabla} \tilde{A}$ as we did $\tilde{\nabla} \vec{A}$ shows that we again need $\partial_\mu \tilde{e}^\nu = F^\nu_{\lambda\mu} \tilde{e}^\lambda$ for some coefficients $F^\nu_{\lambda\mu}$

how can we relate $\Gamma^\nu_{\lambda\mu}$ to $F^\nu_{\lambda\mu}$?

relation between vectors and one-forms: $\langle \tilde{e}^\nu, \vec{e}_\lambda \rangle = \delta^\nu_\lambda$

GR: gradient of one-form $\tilde{\nabla} \tilde{A}$

evaluating $\tilde{\nabla} \tilde{A}$ as we did $\tilde{\nabla} \vec{A}$ shows that we again need $\partial_\mu \tilde{e}^\nu = F^\nu_{\lambda\mu} \tilde{e}^\lambda$ for some coefficients $F^\nu_{\lambda\mu}$

how can we relate $\Gamma^\nu_{\lambda\mu}$ to $F^\nu_{\lambda\mu}$?

relation between vectors and one-forms: $\langle \tilde{e}^\nu, \vec{e}_\lambda \rangle = \delta^\nu_\lambda$

$\partial_\mu \delta^\nu_\lambda = 0$ (obviously)

GR: gradient of one-form $\tilde{\nabla} \tilde{A}$

evaluating $\tilde{\nabla} \tilde{A}$ as we did $\tilde{\nabla} \vec{A}$ shows that we again need $\partial_\mu \tilde{e}^\nu = F^\nu_{\lambda\mu} \tilde{e}^\lambda$ for some coefficients $F^\nu_{\lambda\mu}$

how can we relate $\Gamma^\nu_{\lambda\mu}$ to $F^\nu_{\lambda\mu}$?

relation between vectors and one-forms: $\langle \tilde{e}^\nu, \vec{e}_\lambda \rangle = \delta^\nu_\lambda$

$$0 = \partial_\mu \delta^\nu_\lambda = \partial_\mu (\langle \tilde{e}^\nu, \vec{e}_\lambda \rangle)$$

GR: gradient of one-form $\tilde{\nabla} \tilde{A}$

evaluating $\tilde{\nabla} \tilde{A}$ as we did $\tilde{\nabla} \vec{A}$ shows that we again need $\partial_\mu \tilde{e}^\nu = F^\nu_{\lambda\mu} \tilde{e}^\lambda$ for some coefficients $F^\nu_{\lambda\mu}$

how can we relate $\Gamma^\nu_{\lambda\mu}$ to $F^\nu_{\lambda\mu}$?

relation between vectors and one-forms: $\langle \tilde{e}^\nu, \vec{e}_\lambda \rangle = \delta^\nu_\lambda$

$$0 = \partial_\mu \delta^\nu_\lambda = \partial_\mu (\langle \tilde{e}^\nu, \vec{e}_\lambda \rangle)$$

can we use the product rule with this scalar product?

$$\partial_\mu \left(\langle \tilde{A}, \vec{B} \rangle \right) = ?$$

GR: gradient of one-form $\tilde{\nabla} \tilde{A}$

evaluating $\tilde{\nabla} \tilde{A}$ as we did $\tilde{\nabla} \vec{A}$ shows that we again need $\partial_\mu \tilde{e}^\nu = F^\nu_{\lambda\mu} \tilde{e}^\lambda$ for some coefficients $F^\nu_{\lambda\mu}$

how can we relate $\Gamma^\nu_{\lambda\mu}$ to $F^\nu_{\lambda\mu}$?

relation between vectors and one-forms: $\langle \tilde{e}^\nu, \vec{e}_\lambda \rangle = \delta^\nu_\lambda$

$$0 = \partial_\mu \delta^\nu_\lambda = \partial_\mu (\langle \tilde{e}^\nu, \vec{e}_\lambda \rangle)$$

can we use the product rule with this scalar product?

$$\partial_\mu \left(\langle \tilde{A}, \vec{B} \rangle \right) = \partial_\mu (A_\nu B^\nu) \text{ in some coordinate basis}$$

GR: gradient of one-form $\tilde{\nabla} \tilde{A}$

evaluating $\tilde{\nabla} \tilde{A}$ as we did $\tilde{\nabla} \vec{A}$ shows that we again need $\partial_\mu \tilde{e}^\nu = F^\nu_{\lambda\mu} \tilde{e}^\lambda$ for some coefficients $F^\nu_{\lambda\mu}$

how can we relate $\Gamma^\nu_{\lambda\mu}$ to $F^\nu_{\lambda\mu}$?

relation between vectors and one-forms: $\langle \tilde{e}^\nu, \vec{e}_\lambda \rangle = \delta^\nu_\lambda$

$$0 = \partial_\mu \delta^\nu_\lambda = \partial_\mu (\langle \tilde{e}^\nu, \vec{e}_\lambda \rangle)$$

can we use the product rule with this scalar product?

$$\partial_\mu \left(\langle \tilde{A}, \vec{B} \rangle \right) = \partial_\mu (A_\nu B^\nu)$$

$$= (\partial_\mu A_\nu) B^\nu + A_\nu (\partial_\mu B^\nu) \text{ by product rule on functions}$$

GR: gradient of one-form $\tilde{\nabla} \tilde{A}$

evaluating $\tilde{\nabla} \tilde{A}$ as we did $\tilde{\nabla} \vec{A}$ shows that we again need $\partial_\mu \tilde{e}^\nu = F^\nu_{\lambda\mu} \tilde{e}^\lambda$ for some coefficients $F^\nu_{\lambda\mu}$

how can we relate $\Gamma^\nu_{\lambda\mu}$ to $F^\nu_{\lambda\mu}$?

relation between vectors and one-forms: $\langle \tilde{e}^\nu, \vec{e}_\lambda \rangle = \delta^\nu_\lambda$

$$0 = \partial_\mu \delta^\nu_\lambda = \partial_\mu (\langle \tilde{e}^\nu, \vec{e}_\lambda \rangle)$$

can we use the product rule with this scalar product?

$$\begin{aligned} \partial_\mu \left(\langle \tilde{A}, \vec{B} \rangle \right) &= \partial_\mu (A_\nu B^\nu) \\ &= (\partial_\mu A_\nu) B^\nu + A_\nu (\partial_\mu B^\nu) \\ &= \langle \partial_\mu \tilde{A}, \vec{B} \rangle + \langle \tilde{A}, \partial_\mu \vec{B} \rangle \text{ since} \end{aligned}$$

$$\partial_\mu \tilde{A} = (\partial_\mu A_0, \partial_\mu A_1, \partial_\mu A_2, \partial_\mu A_3)$$

GR: gradient of one-form $\tilde{\nabla} \tilde{A}$

evaluating $\tilde{\nabla} \tilde{A}$ as we did $\tilde{\nabla} \vec{A}$ shows that we again need $\partial_\mu \tilde{e}^\nu = F^\nu_{\lambda\mu} \tilde{e}^\lambda$ for some coefficients $F^\nu_{\lambda\mu}$

how can we relate $\Gamma^\nu_{\lambda\mu}$ to $F^\nu_{\lambda\mu}$?

relation between vectors and one-forms: $\langle \tilde{e}^\nu, \vec{e}_\lambda \rangle = \delta^\nu_\lambda$

$$0 = \partial_\mu \delta^\nu_\lambda = \partial_\mu (\langle \tilde{e}^\nu, \vec{e}_\lambda \rangle)$$

product rule holds: $\partial_\mu (\langle \tilde{A}, \vec{B} \rangle) = \langle \partial_\mu \tilde{A}, \vec{B} \rangle + \langle \tilde{A}, \partial_\mu \vec{B} \rangle$

GR: gradient of one-form $\tilde{\nabla} \tilde{A}$

evaluating $\tilde{\nabla} \tilde{A}$ as we did $\tilde{\nabla} \vec{A}$ shows that we again need $\partial_\mu \tilde{e}^\nu = F^\nu_{\lambda\mu} \tilde{e}^\lambda$ for some coefficients $F^\nu_{\lambda\mu}$

how can we relate $\Gamma^\nu_{\lambda\mu}$ to $F^\nu_{\lambda\mu}$?

relation between vectors and one-forms: $\langle \tilde{e}^\nu, \vec{e}_\lambda \rangle = \delta^\nu_\lambda$

$$0 = \partial_\mu \delta^\nu_\lambda = \partial_\mu (\langle \tilde{e}^\nu, \vec{e}_\lambda \rangle)$$

product rule holds: $\partial_\mu (\langle \tilde{A}, \vec{B} \rangle) = \langle \partial_\mu \tilde{A}, \vec{B} \rangle + \langle \tilde{A}, \partial_\mu \vec{B} \rangle$

$$\text{so } 0 = \langle \partial_\mu \tilde{e}^\nu, \vec{e}_\lambda \rangle + \langle \tilde{e}^\nu, \partial_\mu \vec{e}_\lambda \rangle$$

GR: gradient of one-form $\tilde{\nabla} \tilde{A}$

evaluating $\tilde{\nabla} \tilde{A}$ as we did $\tilde{\nabla} \vec{A}$ shows that we again need $\partial_\mu \tilde{e}^\nu = F^\nu_{\lambda\mu} \tilde{e}^\lambda$ for some coefficients $F^\nu_{\lambda\mu}$

how can we relate $\Gamma^\nu_{\lambda\mu}$ to $F^\nu_{\lambda\mu}$?

relation between vectors and one-forms: $\langle \tilde{e}^\nu, \vec{e}_\lambda \rangle = \delta^\nu_\lambda$

$$0 = \partial_\mu \delta^\nu_\lambda = \partial_\mu (\langle \tilde{e}^\nu, \vec{e}_\lambda \rangle)$$

product rule holds: $\partial_\mu (\langle \tilde{A}, \vec{B} \rangle) = \langle \partial_\mu \tilde{A}, \vec{B} \rangle + \langle \tilde{A}, \partial_\mu \vec{B} \rangle$

$$\text{so } 0 = \langle \partial_\mu \tilde{e}^\nu, \vec{e}_\lambda \rangle + \langle \tilde{e}^\nu, \partial_\mu \vec{e}_\lambda \rangle$$

$$= \langle F^\nu_{\kappa\mu} \tilde{e}^\kappa, \vec{e}_\lambda \rangle + \langle \tilde{e}^\nu, \Gamma^\kappa_{\lambda\mu} \vec{e}_\kappa \rangle$$

GR: gradient of one-form $\tilde{\nabla} \tilde{A}$

evaluating $\tilde{\nabla} \tilde{A}$ as we did $\tilde{\nabla} \vec{A}$ shows that we again need $\partial_\mu \tilde{e}^\nu = F^\nu_{\lambda\mu} \tilde{e}^\lambda$ for some coefficients $F^\nu_{\lambda\mu}$

how can we relate $\Gamma^\nu_{\lambda\mu}$ to $F^\nu_{\lambda\mu}$?

relation between vectors and one-forms: $\langle \tilde{e}^\nu, \vec{e}_\lambda \rangle = \delta^\nu_\lambda$

$$0 = \partial_\mu \delta^\nu_\lambda = \partial_\mu (\langle \tilde{e}^\nu, \vec{e}_\lambda \rangle)$$

product rule holds: $\partial_\mu (\langle \tilde{A}, \vec{B} \rangle) = \langle \partial_\mu \tilde{A}, \vec{B} \rangle + \langle \tilde{A}, \partial_\mu \vec{B} \rangle$

$$\begin{aligned} \text{so } 0 &= \langle \partial_\mu \tilde{e}^\nu, \vec{e}_\lambda \rangle + \langle \tilde{e}^\nu, \partial_\mu \vec{e}_\lambda \rangle \\ &= F^\nu_{\kappa\mu} \langle \tilde{e}^\kappa, \vec{e}_\lambda \rangle + \Gamma^\kappa_{\lambda\mu} \langle \tilde{e}^\nu, \vec{e}_\kappa \rangle \end{aligned}$$

GR: gradient of one-form $\tilde{\nabla} \tilde{A}$

evaluating $\tilde{\nabla} \tilde{A}$ as we did $\tilde{\nabla} \vec{A}$ shows that we again need $\partial_\mu \tilde{e}^\nu = F^\nu_{\lambda\mu} \tilde{e}^\lambda$ for some coefficients $F^\nu_{\lambda\mu}$

how can we relate $\Gamma^\nu_{\lambda\mu}$ to $F^\nu_{\lambda\mu}$?

relation between vectors and one-forms: $\langle \tilde{e}^\nu, \vec{e}_\lambda \rangle = \delta^\nu_\lambda$

$$0 = \partial_\mu \delta^\nu_\lambda = \partial_\mu (\langle \tilde{e}^\nu, \vec{e}_\lambda \rangle)$$

product rule holds: $\partial_\mu (\langle \tilde{A}, \vec{B} \rangle) = \langle \partial_\mu \tilde{A}, \vec{B} \rangle + \langle \tilde{A}, \partial_\mu \vec{B} \rangle$

$$\begin{aligned} \text{so } 0 &= \langle \partial_\mu \tilde{e}^\nu, \vec{e}_\lambda \rangle + \langle \tilde{e}^\nu, \partial_\mu \vec{e}_\lambda \rangle \\ &= F^\nu_{\lambda\mu} + \Gamma^\nu_{\lambda\mu} \text{ since } \langle \tilde{e}^\kappa, \vec{e}_\lambda \rangle = \delta^\kappa_\lambda \end{aligned}$$

GR: gradient of one-form $\tilde{\nabla} \tilde{A}$

evaluating $\tilde{\nabla} \tilde{A}$ as we did $\tilde{\nabla} \vec{A}$ shows that we again need $\partial_\mu \tilde{e}^\nu = F^\nu_{\lambda\mu} \tilde{e}^\lambda$ for some coefficients $F^\nu_{\lambda\mu}$

how can we relate $\Gamma^\nu_{\lambda\mu}$ to $F^\nu_{\lambda\mu}$?

relation between vectors and one-forms: $\langle \tilde{e}^\nu, \vec{e}_\lambda \rangle = \delta^\nu_\lambda$

$$0 = \partial_\mu \delta^\nu_\lambda = \partial_\mu (\langle \tilde{e}^\nu, \vec{e}_\lambda \rangle)$$

product rule holds: $\partial_\mu (\langle \tilde{A}, \vec{B} \rangle) = \langle \partial_\mu \tilde{A}, \vec{B} \rangle + \langle \tilde{A}, \partial_\mu \vec{B} \rangle$

$$\text{so } 0 = \langle \partial_\mu \tilde{e}^\nu, \vec{e}_\lambda \rangle + \langle \tilde{e}^\nu, \partial_\mu \vec{e}_\lambda \rangle$$

$$= F^\nu_{\lambda\mu} + \Gamma^\nu_{\lambda\mu} \text{ since } \langle \tilde{e}^\kappa, \vec{e}_\lambda \rangle = \delta^\kappa_\lambda$$

$$\text{hence, } \partial_\mu \tilde{e}^\nu =: F^\nu_{\lambda\mu} \tilde{e}^\lambda = -\Gamma^\nu_{\lambda\mu} \tilde{e}^\lambda$$

GR: gradient of one-form $\tilde{\nabla} \tilde{A}$

evaluating $\tilde{\nabla} \tilde{A}$ as we did $\tilde{\nabla} \vec{A}$ shows that we again need $\partial_\mu \tilde{e}^\nu = F^\nu_{\lambda\mu} \tilde{e}^\lambda$ for some coefficients $F^\nu_{\lambda\mu}$

how can we relate $\Gamma^\nu_{\lambda\mu}$ to $F^\nu_{\lambda\mu}$?

relation between vectors and one-forms: $\langle \tilde{e}^\nu, \vec{e}_\lambda \rangle = \delta^\nu_\lambda$

$$0 = \partial_\mu \delta^\nu_\lambda = \partial_\mu (\langle \tilde{e}^\nu, \vec{e}_\lambda \rangle)$$

product rule holds: $\partial_\mu (\langle \tilde{A}, \vec{B} \rangle) = \langle \partial_\mu \tilde{A}, \vec{B} \rangle + \langle \tilde{A}, \partial_\mu \vec{B} \rangle$

$$\begin{aligned} \text{so } 0 &= \langle \partial_\mu \tilde{e}^\nu, \vec{e}_\lambda \rangle + \langle \tilde{e}^\nu, \partial_\mu \vec{e}_\lambda \rangle \\ &= F^\nu_{\lambda\mu} + \Gamma^\nu_{\lambda\mu} \quad \text{since } \langle \tilde{e}^\kappa, \vec{e}_\lambda \rangle = \delta^\kappa_\lambda \end{aligned}$$

$$\text{hence, } \partial_\mu \tilde{e}^\nu =: F^\nu_{\lambda\mu} \tilde{e}^\lambda = -\Gamma^\nu_{\lambda\mu} \tilde{e}^\lambda$$

$$\nabla_\mu A^\nu = \partial_\mu A^\nu + A^\lambda \Gamma^\nu_{\lambda\mu} \quad , \quad \nabla_\mu A_\nu = \partial_\mu A_\nu - A_\lambda \Gamma^\lambda_{\mu\nu}$$

GR: gradient of one-form $\tilde{\nabla} \tilde{A}$

evaluating $\tilde{\nabla} \tilde{A}$ as we did $\tilde{\nabla} \vec{A}$ shows that we again need $\partial_\mu \tilde{e}^\nu = F^\nu_{\lambda\mu} \tilde{e}^\lambda$ for some coefficients $F^\nu_{\lambda\mu}$

how can we relate $\Gamma^\nu_{\lambda\mu}$ to $F^\nu_{\lambda\mu}$?

relation between vectors and one-forms: $\langle \tilde{e}^\nu, \vec{e}_\lambda \rangle = \delta^\nu_\lambda$

$$0 = \partial_\mu \delta^\nu_\lambda = \partial_\mu (\langle \tilde{e}^\nu, \vec{e}_\lambda \rangle)$$

product rule holds: $\partial_\mu (\langle \tilde{A}, \vec{B} \rangle) = \langle \partial_\mu \tilde{A}, \vec{B} \rangle + \langle \tilde{A}, \partial_\mu \vec{B} \rangle$

$$\text{so } 0 = \langle \partial_\mu \tilde{e}^\nu, \vec{e}_\lambda \rangle + \langle \tilde{e}^\nu, \partial_\mu \vec{e}_\lambda \rangle$$

$$= F^\nu_{\lambda\mu} + \Gamma^\nu_{\lambda\mu} \text{ since } \langle \tilde{e}^\kappa, \vec{e}_\lambda \rangle = \delta^\kappa_\lambda$$

$$\text{hence, } \partial_\mu \tilde{e}^\nu =: F^\nu_{\lambda\mu} \tilde{e}^\lambda = -\Gamma^\nu_{\lambda\mu} \tilde{e}^\lambda$$

$$A^\nu_{;\mu} = A^\nu_{,\mu} + A^\lambda \Gamma^\nu_{\lambda\mu} \quad , \quad A_{\nu;\mu} = A_{\nu,\mu} - A_\lambda \Gamma^\lambda_{\mu\nu}$$

GR: smooth manifold and $\tilde{\nabla} \mathbf{g}$

similarly, we can write the (0, 3)-tensor

$$\tilde{\nabla} \mathbf{g} = (\nabla_{\lambda} g_{\mu\nu}) \tilde{e}^{\lambda} \otimes \tilde{e}^{\mu} \otimes \tilde{e}^{\nu}$$

giving $\nabla_{\lambda} g_{\mu\nu} = \partial_{\lambda} g_{\mu\nu} - \Gamma^{\kappa}_{\mu\lambda} g_{\kappa\nu} - \Gamma^{\kappa}_{\nu\lambda} g_{\mu\kappa}$



GR: smooth manifold and $\tilde{\nabla} \mathbf{g}$

similarly, we can write the (0, 3)-tensor

$$\tilde{\nabla} \mathbf{g} = (\nabla_{\lambda} g_{\mu\nu}) \tilde{e}^{\lambda} \otimes \tilde{e}^{\mu} \otimes \tilde{e}^{\nu}$$

$$\text{giving } \nabla_{\lambda} g_{\mu\nu} = \partial_{\lambda} g_{\mu\nu} - \Gamma^{\kappa}_{\mu\lambda} g_{\kappa\nu} - \Gamma^{\kappa}_{\nu\lambda} g_{\mu\kappa}$$

$$\text{also } \tilde{\nabla} \mathbf{g}^{-1} = (\nabla_{\lambda} g^{\mu\nu}) \tilde{e}^{\lambda} \otimes \tilde{e}_{\mu} \otimes \tilde{e}_{\nu}$$

$$\text{and } \nabla_{\lambda} g^{\mu\nu} = \partial_{\lambda} g^{\mu\nu} + \Gamma^{\mu}_{\kappa\lambda} g^{\kappa\nu} + \Gamma^{\nu}_{\kappa\lambda} g^{\mu\kappa}$$



GR: smooth manifold and $\tilde{\nabla} \mathbf{g}$

similarly, we can write the (0, 3)-tensor

$$\tilde{\nabla} \mathbf{g} = (\nabla_{\lambda} g_{\mu\nu}) \tilde{e}^{\lambda} \otimes \tilde{e}^{\mu} \otimes \tilde{e}^{\nu}$$

$$\text{giving } \nabla_{\lambda} g_{\mu\nu} = \partial_{\lambda} g_{\mu\nu} - \Gamma^{\kappa}_{\mu\lambda} g_{\kappa\nu} - \Gamma^{\kappa}_{\nu\lambda} g_{\mu\kappa}$$

$$\text{also } \tilde{\nabla} \mathbf{g}^{-1} = (\nabla_{\lambda} g^{\mu\nu}) \tilde{e}^{\lambda} \otimes \tilde{e}_{\mu} \otimes \tilde{e}_{\nu}$$

$$\text{and } \nabla_{\lambda} g^{\mu\nu} = \partial_{\lambda} g^{\mu\nu} + \Gamma^{\mu}_{\kappa\lambda} g^{\kappa\nu} + \Gamma^{\nu}_{\kappa\lambda} g^{\mu\kappa}$$

Do we know anything interesting about $\tilde{\nabla} \mathbf{g}$ for the manifolds of interest to GR?

GR: smooth manifold and $\tilde{\nabla} \mathbf{g}$

similarly, we can write the (0, 3)-tensor

$$\tilde{\nabla} \mathbf{g} = (\nabla_{\lambda} g_{\mu\nu}) \tilde{e}^{\lambda} \otimes \tilde{e}^{\mu} \otimes \tilde{e}^{\nu}$$

$$\text{giving } \nabla_{\lambda} g_{\mu\nu} = \partial_{\lambda} g_{\mu\nu} - \Gamma^{\kappa}_{\mu\lambda} g_{\kappa\nu} - \Gamma^{\kappa}_{\nu\lambda} g_{\mu\kappa}$$

$$\text{also } \tilde{\nabla} \mathbf{g}^{-1} = (\nabla_{\lambda} g^{\mu\nu}) \tilde{e}^{\lambda} \otimes \tilde{e}_{\mu} \otimes \tilde{e}_{\nu}$$

$$\text{and } \nabla_{\lambda} g^{\mu\nu} = \partial_{\lambda} g^{\mu\nu} + \Gamma^{\mu}_{\kappa\lambda} g^{\kappa\nu} + \Gamma^{\nu}_{\kappa\lambda} g^{\mu\kappa}$$

Do we know anything interesting about $\tilde{\nabla} \mathbf{g}$ for the manifolds of interest to GR?

First, we need a rough description of the manifolds we need for GR.

GR: smooth manifold and $\tilde{\nabla}g$

topological manifold M

w:Manifold#Mathematical_definition

- only topological properties needed



GR: smooth manifold and $\tilde{\nabla}g$

topological manifold M

w:Manifold#Mathematical_definition

- only topological properties needed
- no differentiability, no metric needed

GR: smooth manifold and $\tilde{\nabla}g$

topological manifold M

w:Manifold#Mathematical_definition

- only topological properties needed

next: relation with \mathbb{R}^4 (or M^4)



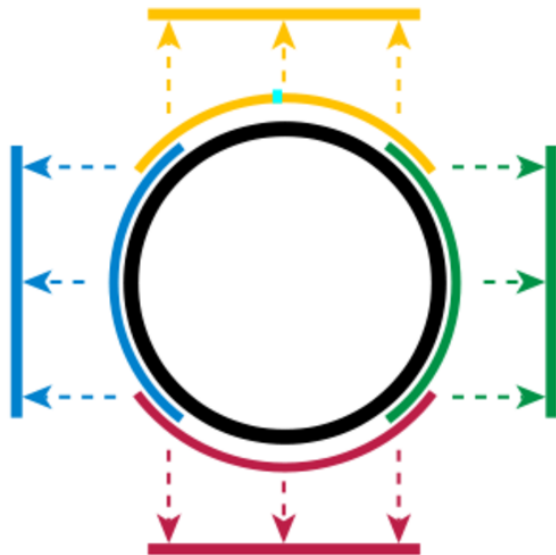
GR: smooth manifold and $\tilde{\nabla}g$

topological manifold M

w:Manifold#Mathematical_definition

- only topological properties needed

next: relation with \mathbb{R}^4 (or M^4)



GR: smooth manifold and $\tilde{\nabla}g$

topological manifold M

w:Manifold#Mathematical_definition

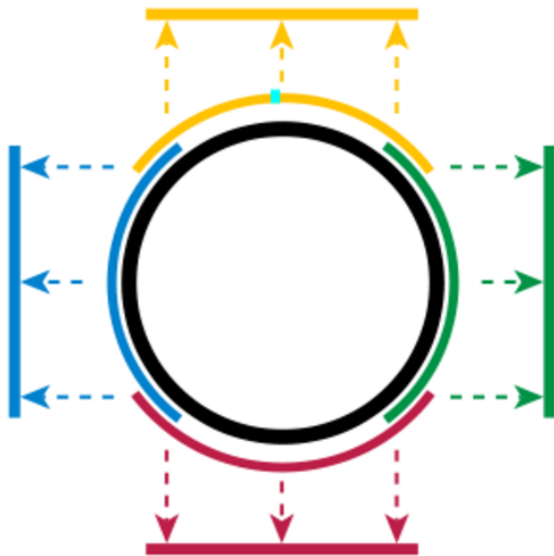
- only topological properties needed

next: relation with \mathbb{R}^4 (or M^4)

w:Manifold

- chart := function ϕ_α from part of pseudo-4-manifold M to part of M^4 (Minkowski)

- atlas := set of overlapping charts that cover M

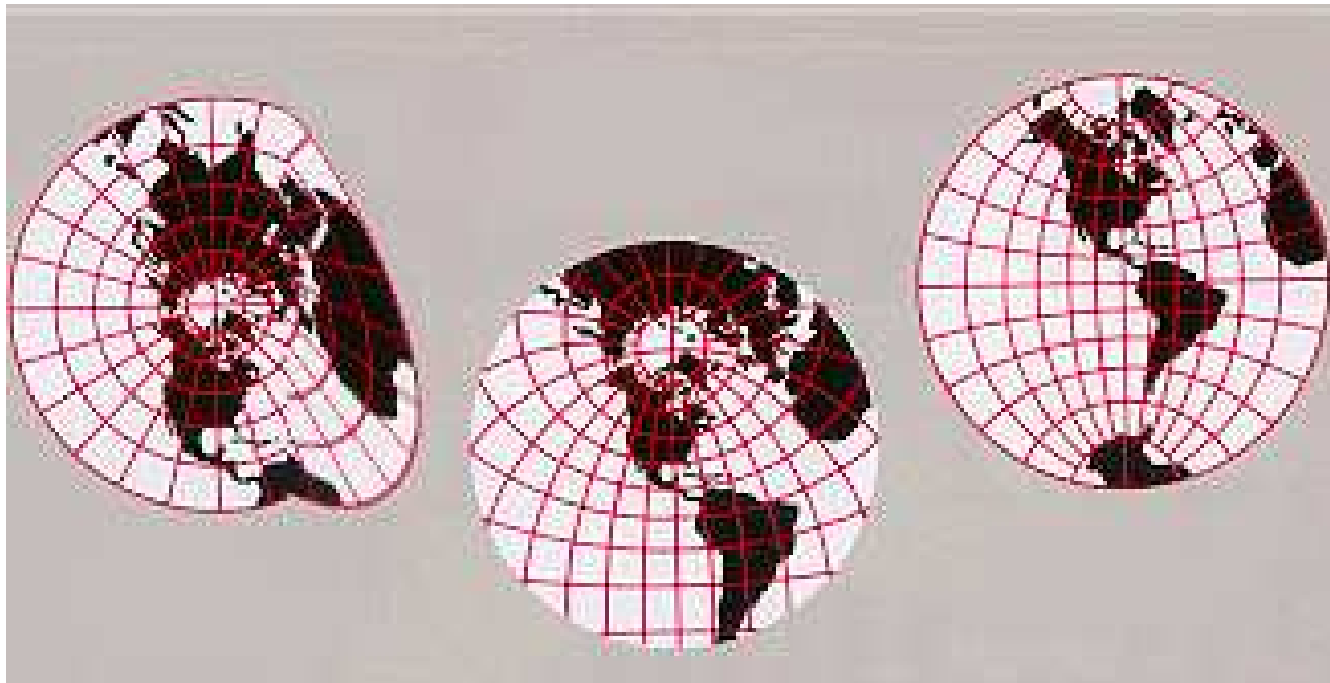


GR: smooth manifold and $\tilde{\nabla}g$

if every transition chart $:= \phi_\beta \circ \phi_\alpha^{-1}$ in an atlas for M is differentiable on \mathbb{R}^4 (or M^4), then M is a w:differentiable 4-(pseudo-)manifold

GR: smooth manifold and $\tilde{\nabla}g$

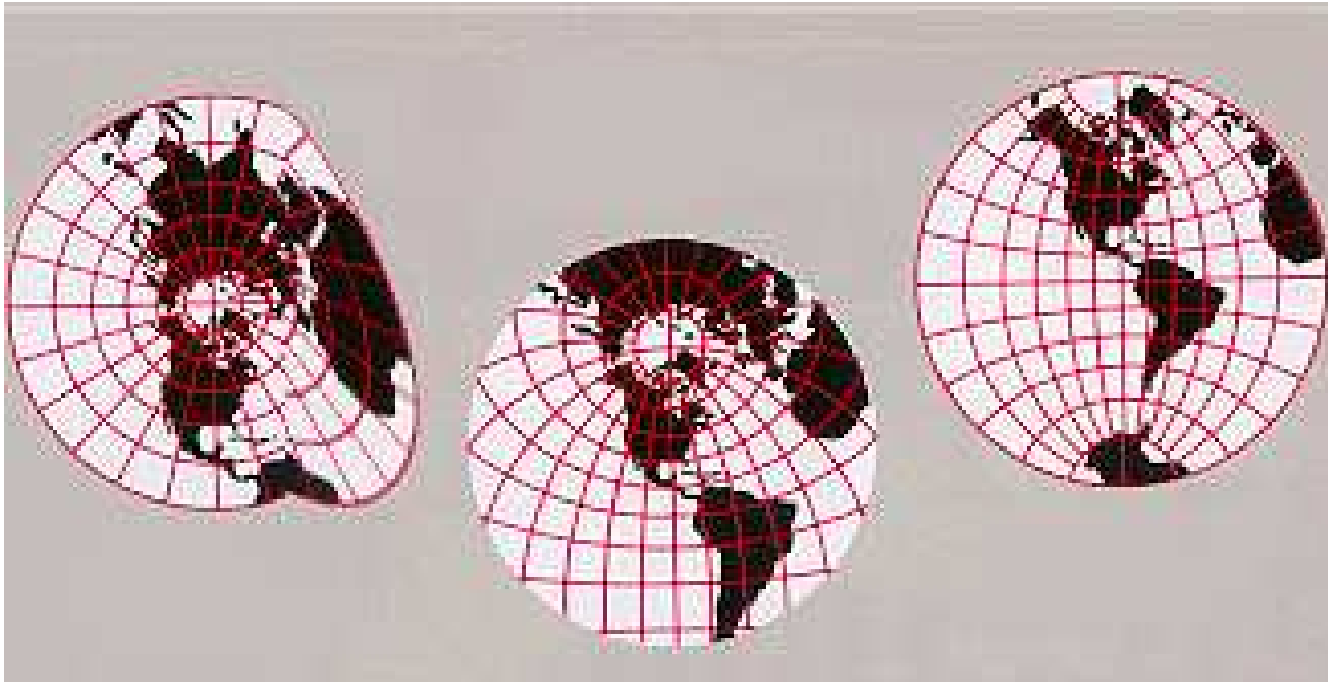
if every transition chart $:= \phi_\beta \circ \phi_\alpha^{-1}$ in an atlas for M is differentiable on \mathbb{R}^4 (or M^4), then M is a w:differentiable 4-(pseudo-)manifold



W:

GR: smooth manifold and $\tilde{\nabla}g$

if every transition chart $:= \phi_\beta \circ \phi_\alpha^{-1}$ in an atlas for M is differentiable on \mathbb{R}^4 (or M^4), then M is a w:differentiable 4-(pseudo-)manifold

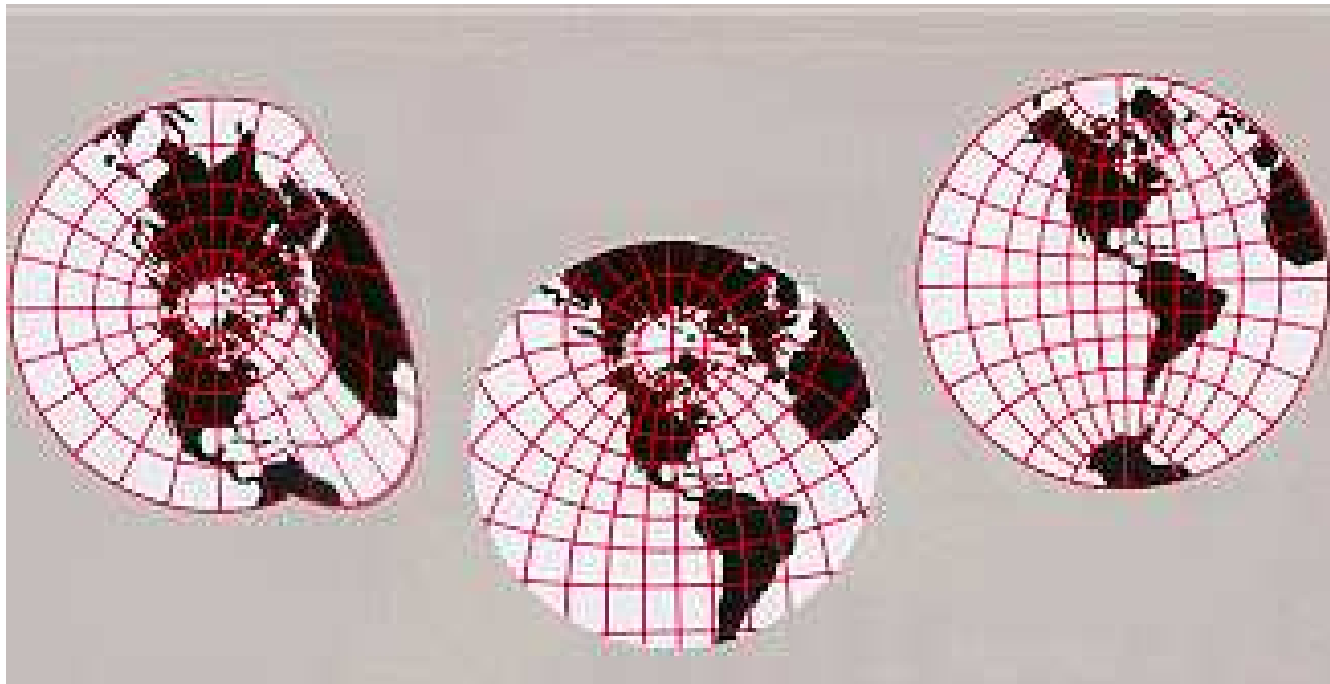


w:

projections (left-to-right) ϕ_1, ϕ_2, ϕ_3 from S^2 to \mathbb{R}^2

GR: smooth manifold and $\tilde{\nabla}g$

if every transition chart $:= \phi_\beta \circ \phi_\alpha^{-1}$ in an atlas for M is differentiable on \mathbb{R}^4 (or M^4), then M is a w:differentiable 4-(pseudo-)manifold

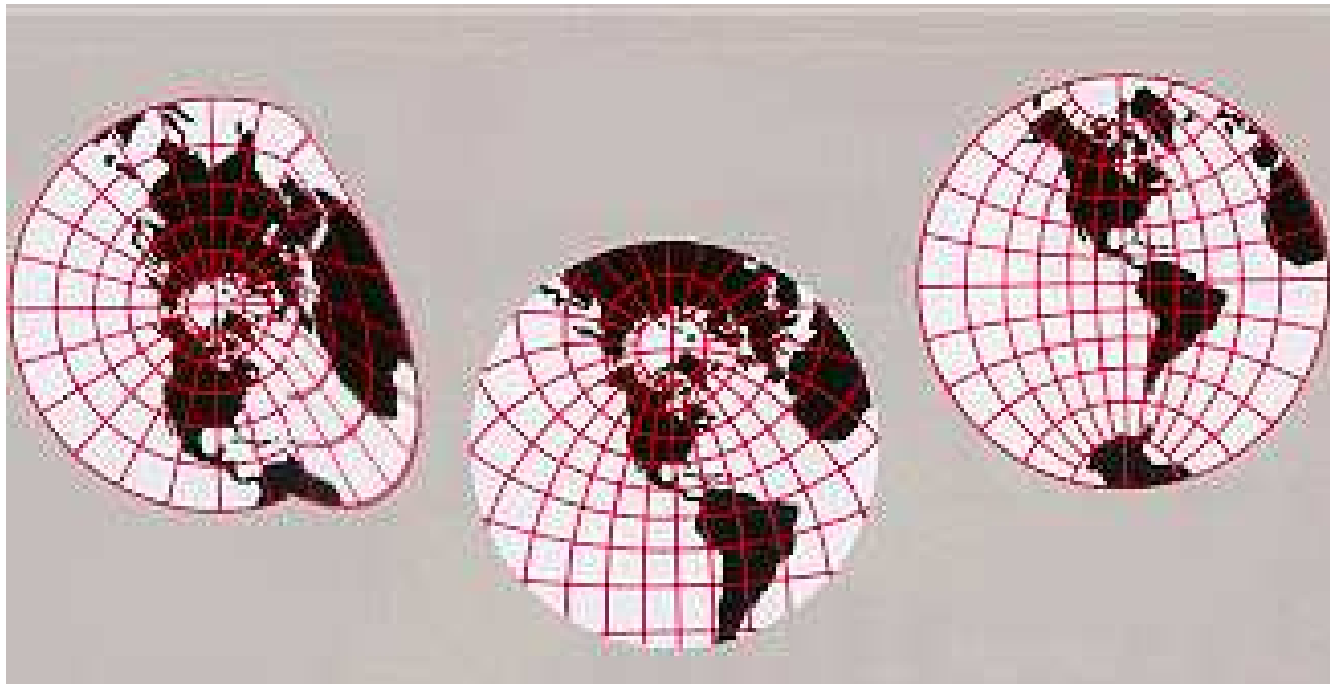


w:

ϕ_1 is not differentiable, so $\phi_1 \circ \phi_2^{-1}$ is not differentiable

GR: smooth manifold and $\tilde{\nabla}g$

if every transition chart $:= \phi_\beta \circ \phi_\alpha^{-1}$ in an atlas for M is differentiable on \mathbb{R}^4 (or M^4), then M is a w:differentiable 4-(pseudo-)manifold



w:

atlas not enough to show that $S^2 =$ differentiable 2-manifold

GR: smooth manifold and $\tilde{\nabla}g$



if every transition chart $:= \phi_\beta \circ \phi_\alpha^{-1}$ in an atlas for M is differentiable on \mathbb{R}^4 (or M^4), then M is a w:differentiable 4-(pseudo-)manifold



GR: smooth manifold and $\tilde{\nabla}g$

if every transition chart $:= \phi_\beta \circ \phi_\alpha^{-1}$ in an atlas for M is differentiable on \mathbb{R}^4 (or M^4), then M is a w:differentiable 4-(pseudo-)manifold

if $\forall k \geq 1, \exists k$ -th derivatives, then M is a smooth 4-(pseudo-)manifold

GR: smooth manifold and $\tilde{\nabla}g$



if every transition chart $:= \phi_\beta \circ \phi_\alpha^{-1}$ in an atlas for M is differentiable on \mathbb{R}^4 (or M^4), then M is a w:differentiable 4-(pseudo-)manifold

if $\forall k \geq 1, \exists k$ -th derivatives, then M is a smooth 4-(pseudo-)manifold

if a (pseudo-)w:Riemannian metric g can be added to M , then (M, g) is a (pseudo-)Riemannian 4-manifold



GR: smooth manifold and $\tilde{\nabla}g$



if every transition chart $:= \phi_\beta \circ \phi_\alpha^{-1}$ in an atlas for M is differentiable on \mathbb{R}^4 (or M^4), then M is a w:differentiable 4-(pseudo-)manifold

if $\forall k \geq 1, \exists k$ -th derivatives, then M is a smooth 4-(pseudo-)manifold

if a (pseudo-)w:Riemannian metric g can be added to M , then (M, g) is a (pseudo-)Riemannian 4-manifold

if g has signature $(1, n - 1)$ (i.e. $(-, +, +, +)$ or $(+, -, -, -)$, etc.), then (M, g) is a Lorentzian n -manifold





GR: smooth manifold and $\tilde{\nabla}g$

topological manifolds



GR: smooth manifold and $\tilde{\nabla}g$



topological manifolds

differentiable (pseudo-)manifolds





GR: smooth manifold and $\tilde{\nabla}g$

topological manifolds

differentiable (pseudo-)manifolds

smooth (pseudo-)manifolds



GR: smooth manifold and $\tilde{\nabla}g$



topological manifolds

differentiable (pseudo-)manifolds

smooth (pseudo-)manifolds

(pseudo-)Riemannian manifolds



GR: smooth manifold and $\tilde{\nabla}g$



topological manifolds

differentiable (pseudo-)manifolds

smooth (pseudo-)manifolds

(pseudo-)Riemannian manifolds

Lorentzian manifolds



GR: smooth manifold and $\tilde{\nabla}g$



topological manifolds

differentiable (pseudo-)manifolds

smooth (pseudo-)manifolds

(pseudo-)Riemannian manifolds

Lorentzian manifolds

Lorentzian 4-manifolds



GR: smooth manifold and $\tilde{\nabla}g$



topological manifolds

differentiable (pseudo-)manifolds

smooth (pseudo-)manifolds

(pseudo-)Riemannian manifolds

Lorentzian manifolds

Lorentzian 4-manifolds

GR: assume that spacetime is a Lorentzian 4-manifold



GR: smooth manifold and $\tilde{\nabla}g$

from above:

$$\nabla_{\lambda}g_{\mu\nu} = \partial_{\lambda}g_{\mu\nu} - \Gamma^{\kappa}_{\mu\lambda}g_{\kappa\nu} - \Gamma^{\kappa}_{\nu\lambda}g_{\mu\kappa}$$

GR: smooth manifold and $\tilde{\nabla} g$

from above:

$$\nabla_{\lambda} g_{\mu\nu} = \partial_{\lambda} g_{\mu\nu} - \Gamma^{\kappa}_{\mu\lambda} g_{\kappa\nu} - \Gamma^{\kappa}_{\nu\lambda} g_{\mu\kappa}$$

in the tangent space at x , \exists coordinate basis $\vec{e}_{\bar{\mu}}$ with

$$g_{\bar{\mu}\bar{\nu}} = \eta_{\bar{\mu}\bar{\nu}} = \text{diag}(-1, 1, 1, 1) = g^{\bar{\mu}\bar{\nu}}$$

$$\Rightarrow \partial_{\bar{\lambda}} g_{\bar{\mu}\bar{\nu}} = \partial_{\bar{\lambda}} \eta_{\bar{\mu}\bar{\nu}}$$

GR: smooth manifold and $\tilde{\nabla} g$

from above:

$$\nabla_{\lambda} g_{\mu\nu} = \partial_{\lambda} g_{\mu\nu} - \Gamma^{\kappa}_{\mu\lambda} g_{\kappa\nu} - \Gamma^{\kappa}_{\nu\lambda} g_{\mu\kappa}$$

in the tangent space at x , \exists coordinate basis $\vec{e}_{\bar{\mu}}$ with

$$g_{\bar{\mu}\bar{\nu}} = \eta_{\bar{\mu}\bar{\nu}} = \text{diag}(-1, 1, 1, 1) = g^{\bar{\mu}\bar{\nu}}$$

$$\Rightarrow \partial_{\bar{\lambda}} g_{\bar{\mu}\bar{\nu}} = \partial_{\bar{\lambda}} \eta_{\bar{\mu}\bar{\nu}} = 0$$

GR: smooth manifold and $\tilde{\nabla} g$

from above:

$$\nabla_{\lambda} g_{\mu\nu} = \partial_{\lambda} g_{\mu\nu} - \Gamma^{\kappa}_{\mu\lambda} g_{\kappa\nu} - \Gamma^{\kappa}_{\nu\lambda} g_{\mu\kappa}$$

in the tangent space at x , \exists coordinate basis $\vec{e}_{\bar{\mu}}$ with

$$g_{\bar{\mu}\bar{\nu}} = \eta_{\bar{\mu}\bar{\nu}} = \text{diag}(-1, 1, 1, 1) = g^{\bar{\mu}\bar{\nu}}$$

$$\Rightarrow \partial_{\bar{\lambda}} g_{\bar{\mu}\bar{\nu}} = \partial_{\bar{\lambda}} \eta_{\bar{\mu}\bar{\nu}} = 0$$

also, $\Gamma^{\bar{\lambda}}_{\bar{\nu}\bar{\mu}} \vec{e}_{\bar{\lambda}} := \vec{e}_{\bar{\nu},\bar{\mu}} = \partial_{\bar{\mu}} \vec{e}_{\bar{\nu}}$

GR: smooth manifold and $\tilde{\nabla} g$

from above:

$$\nabla_{\lambda} g_{\mu\nu} = \partial_{\lambda} g_{\mu\nu} - \Gamma^{\kappa}_{\mu\lambda} g_{\kappa\nu} - \Gamma^{\kappa}_{\nu\lambda} g_{\mu\kappa}$$

in the tangent space at x , \exists coordinate basis $\vec{e}_{\bar{\mu}}$ with

$$g_{\bar{\mu}\bar{\nu}} = \eta_{\bar{\mu}\bar{\nu}} = \text{diag}(-1, 1, 1, 1) = g^{\bar{\mu}\bar{\nu}}$$

$$\Rightarrow \partial_{\bar{\lambda}} g_{\bar{\mu}\bar{\nu}} = \partial_{\bar{\lambda}} \eta_{\bar{\mu}\bar{\nu}} = 0$$

also, $\Gamma^{\bar{\lambda}}_{\bar{\nu}\bar{\mu}} \vec{e}_{\bar{\lambda}} := \vec{e}_{\bar{\nu},\bar{\mu}} = \partial_{\bar{\mu}} \vec{e}_{\bar{\nu}}$

but in a Cartesian or Minkowski (vector) space, the basis vectors always point in the same direction and their lengths are fixed

GR: smooth manifold and $\tilde{\nabla} g$

from above:

$$\nabla_{\lambda} g_{\mu\nu} = \partial_{\lambda} g_{\mu\nu} - \Gamma^{\kappa}_{\mu\lambda} g_{\kappa\nu} - \Gamma^{\kappa}_{\nu\lambda} g_{\mu\kappa}$$

in the tangent space at x , \exists coordinate basis $\vec{e}_{\bar{\mu}}$ with

$$g_{\bar{\mu}\bar{\nu}} = \eta_{\bar{\mu}\bar{\nu}} = \text{diag}(-1, 1, 1, 1) = g^{\bar{\mu}\bar{\nu}}$$

$$\Rightarrow \partial_{\bar{\lambda}} g_{\bar{\mu}\bar{\nu}} = \partial_{\bar{\lambda}} \eta_{\bar{\mu}\bar{\nu}} = 0$$

$$\text{also, } \Gamma^{\bar{\lambda}}_{\bar{\nu}\bar{\mu}} \vec{e}_{\bar{\lambda}} := \vec{e}_{\bar{\nu},\bar{\mu}} = \partial_{\bar{\mu}} \vec{e}_{\bar{\nu}}$$

$$M^4 \Rightarrow \Gamma^{\bar{\lambda}}_{\bar{\nu}\bar{\mu}} \vec{e}_{\bar{\lambda}} = 0$$

GR: smooth manifold and $\tilde{\nabla} g$

from above:

$$\nabla_{\lambda} g_{\mu\nu} = \partial_{\lambda} g_{\mu\nu} - \Gamma^{\kappa}_{\mu\lambda} g_{\kappa\nu} - \Gamma^{\kappa}_{\nu\lambda} g_{\mu\kappa}$$

in the tangent space at x , \exists coordinate basis $\vec{e}_{\bar{\mu}}$ with

$$g_{\bar{\mu}\bar{\nu}} = \eta_{\bar{\mu}\bar{\nu}} = \text{diag}(-1, 1, 1, 1) = g^{\bar{\mu}\bar{\nu}}$$

$$\Rightarrow \partial_{\bar{\lambda}} g_{\bar{\mu}\bar{\nu}} = \partial_{\bar{\lambda}} \eta_{\bar{\mu}\bar{\nu}} = 0$$

$$\text{also, } \Gamma^{\bar{\lambda}}_{\bar{\nu}\bar{\mu}} \vec{e}_{\bar{\lambda}} := \vec{e}_{\bar{\nu},\bar{\mu}} = \partial_{\bar{\mu}} \vec{e}_{\bar{\nu}}$$

$$\text{so } \nabla_{\bar{\lambda}} g_{\bar{\mu}\bar{\nu}} = 0$$

GR: smooth manifold and $\tilde{\nabla} \mathbf{g}$

from above:

$$\nabla_{\lambda} g_{\mu\nu} = \partial_{\lambda} g_{\mu\nu} - \Gamma^{\kappa}_{\mu\lambda} g_{\kappa\nu} - \Gamma^{\kappa}_{\nu\lambda} g_{\mu\kappa}$$

in the tangent space at \mathbf{x} , \exists coordinate basis $\vec{e}_{\bar{\mu}}$ with

$$g_{\bar{\mu}\bar{\nu}} = \eta_{\bar{\mu}\bar{\nu}} = \text{diag}(-1, 1, 1, 1) = g^{\bar{\mu}\bar{\nu}}$$

$$\Rightarrow \partial_{\bar{\lambda}} g_{\bar{\mu}\bar{\nu}} = \partial_{\bar{\lambda}} \eta_{\bar{\mu}\bar{\nu}} = 0$$

$$\text{also, } \Gamma^{\bar{\lambda}}_{\bar{\nu}\bar{\mu}} \vec{e}_{\bar{\lambda}} := \vec{e}_{\bar{\nu},\bar{\mu}} = \partial_{\bar{\mu}} \vec{e}_{\bar{\nu}}$$

$$\text{so } \nabla_{\bar{\lambda}} g_{\bar{\mu}\bar{\nu}} = 0$$

so $\tilde{\nabla} \mathbf{g} = 0$ (also $\tilde{\nabla} \mathbf{g}^{-1} = 0$) on the tangent space, since if true in one coord system, also true in others

GR: smooth manifold and $\tilde{\nabla} \mathbf{g}$

from above:

$$\nabla_{\lambda} g_{\mu\nu} = \partial_{\lambda} g_{\mu\nu} - \Gamma^{\kappa}_{\mu\lambda} g_{\kappa\nu} - \Gamma^{\kappa}_{\nu\lambda} g_{\mu\kappa}$$

in the tangent space at \mathbf{x} , \exists coordinate basis $\vec{e}_{\bar{\mu}}$ with

$$g_{\bar{\mu}\bar{\nu}} = \eta_{\bar{\mu}\bar{\nu}} = \text{diag}(-1, 1, 1, 1) = g^{\bar{\mu}\bar{\nu}}$$

$$\Rightarrow \partial_{\bar{\lambda}} g_{\bar{\mu}\bar{\nu}} = \partial_{\bar{\lambda}} \eta_{\bar{\mu}\bar{\nu}} = 0$$

$$\text{also, } \Gamma^{\bar{\lambda}}_{\bar{\nu}\bar{\mu}} \vec{e}_{\bar{\lambda}} := \vec{e}_{\bar{\nu},\bar{\mu}} = \partial_{\bar{\mu}} \vec{e}_{\bar{\nu}}$$

$$\text{so } \nabla_{\bar{\lambda}} g_{\bar{\mu}\bar{\nu}} = 0$$

$$\text{so } \tilde{\nabla} \mathbf{g} = \mathbf{0} = \tilde{\nabla} \mathbf{g}^{-1} \text{ on tangent space}$$

$$\dots \tilde{\nabla} \mathbf{g} = \mathbf{0} = \tilde{\nabla} \mathbf{g}^{-1} \text{ on } M$$

GR: smooth manifold and $\tilde{\nabla} \mathbf{g}$

from above:

$$\nabla_{\lambda} g_{\mu\nu} = \partial_{\lambda} g_{\mu\nu} - \Gamma^{\kappa}_{\mu\lambda} g_{\kappa\nu} - \Gamma^{\kappa}_{\nu\lambda} g_{\mu\kappa}$$

in the tangent space at \mathbf{x} , \exists coordinate basis $\vec{e}_{\bar{\mu}}$ with

$$g_{\bar{\mu}\bar{\nu}} = \eta_{\bar{\mu}\bar{\nu}} = \text{diag}(-1, 1, 1, 1) = g^{\bar{\mu}\bar{\nu}}$$

$$\Rightarrow \partial_{\bar{\lambda}} g_{\bar{\mu}\bar{\nu}} = \partial_{\bar{\lambda}} \eta_{\bar{\mu}\bar{\nu}} = 0$$

$$\text{also, } \Gamma^{\bar{\lambda}}_{\bar{\nu}\bar{\mu}} \vec{e}_{\bar{\lambda}} := \vec{e}_{\bar{\nu},\bar{\mu}} = \partial_{\bar{\mu}} \vec{e}_{\bar{\nu}}$$

$$\text{so } \nabla_{\bar{\lambda}} g_{\bar{\mu}\bar{\nu}} = 0$$

$$\text{so } \tilde{\nabla} \mathbf{g} = \mathbf{0} = \tilde{\nabla} \mathbf{g}^{-1} \text{ on tangent space}$$

$$\dots \tilde{\nabla} \mathbf{g} = \mathbf{0} = \tilde{\nabla} \mathbf{g}^{-1} \text{ on } M$$

$$\dots \Gamma^{\lambda}_{\mu\nu} = \Gamma^{\lambda}_{\nu\mu} \text{ in any coord. basis (symmetric defn)}$$

GR: smooth manifold and $\tilde{\nabla} \mathbf{g}$

from above:

$$\nabla_{\lambda} g_{\mu\nu} = \partial_{\lambda} g_{\mu\nu} - \Gamma^{\kappa}_{\mu\lambda} g_{\kappa\nu} - \Gamma^{\kappa}_{\nu\lambda} g_{\mu\kappa}$$

in the tangent space at \mathbf{x} , \exists coordinate basis $\vec{e}_{\bar{\mu}}$ with

$$g_{\bar{\mu}\bar{\nu}} = \eta_{\bar{\mu}\bar{\nu}} = \text{diag}(-1, 1, 1, 1) = g^{\bar{\mu}\bar{\nu}}$$

$$\Rightarrow \partial_{\bar{\lambda}} g_{\bar{\mu}\bar{\nu}} = \partial_{\bar{\lambda}} \eta_{\bar{\mu}\bar{\nu}} = 0$$

$$\text{also, } \Gamma^{\bar{\lambda}}_{\bar{\nu}\bar{\mu}} \vec{e}_{\bar{\lambda}} := \vec{e}_{\bar{\nu},\bar{\mu}} = \partial_{\bar{\mu}} \vec{e}_{\bar{\nu}}$$

$$\text{so } \nabla_{\bar{\lambda}} g_{\bar{\mu}\bar{\nu}} = 0$$

$$\text{so } \tilde{\nabla} \mathbf{g} = \mathbf{0} = \tilde{\nabla} \mathbf{g}^{-1} \text{ on tangent space}$$

$$\dots \tilde{\nabla} \mathbf{g} = \mathbf{0} = \tilde{\nabla} \mathbf{g}^{-1} \text{ on } M$$

$$\dots \Gamma^{\lambda}_{\mu\nu} = \Gamma^{\lambda}_{\nu\mu} \text{ in any coord. basis (symmetric defn)}$$

...

$$\Gamma^{\lambda}_{\mu\nu} = \frac{1}{2} g^{\lambda\kappa} (\partial_{\mu} g_{\nu\kappa} + \partial_{\nu} g_{\mu\kappa} - \partial_{\kappa} g_{\mu\nu}) \text{ in a coordinate basis}$$

GR: directional deriv.: $\langle \tilde{\nabla} \vec{A}, \vec{V} \rangle$

- $\tilde{\nabla} \phi, \tilde{\nabla} \vec{A}, \tilde{\nabla} \tilde{A}$ gave how the fields $\phi, \vec{A},$ or \tilde{A} change around the manifold in general



GR: directional deriv.: $\langle \tilde{\nabla} \vec{A}, \vec{V} \rangle$

- $\tilde{\nabla} \phi, \tilde{\nabla} \vec{A}, \tilde{\nabla} \tilde{A}$ gave how the fields $\phi, \vec{A},$ or \tilde{A} change around the manifold in general
- how about moving along a specific curve?



GR: directional deriv.: $\langle \tilde{\nabla} \vec{A}, \vec{V} \rangle$

- $\tilde{\nabla} \phi, \tilde{\nabla} \vec{A}, \tilde{\nabla} \tilde{A}$ gave how the fields ϕ, \vec{A} , or \tilde{A} change around the manifold in general
- how about moving along a specific curve?
- curve on manifold parametrised by a continuously changing real parameter λ : $\mathbf{x}(\lambda)$



GR: directional deriv.: $\langle \tilde{\nabla} \vec{A}, \vec{V} \rangle$

- $\tilde{\nabla} \phi, \tilde{\nabla} \vec{A}, \tilde{\nabla} \tilde{A}$ gave how the fields $\phi, \vec{A},$ or \tilde{A} change around the manifold in general
- how about moving along a specific curve?
- curve on manifold parametrised by a continuously changing real parameter $\lambda: \mathbf{x}(\lambda) = \{x^\mu(\lambda)\}$ in a coordinate basis



GR: directional deriv.: $\langle \tilde{\nabla} \vec{A}, \vec{V} \rangle$

- $\tilde{\nabla} \phi, \tilde{\nabla} \vec{A}, \tilde{\nabla} \tilde{A}$ gave how the fields ϕ, \vec{A} , or \tilde{A} change around the manifold in general
- how about moving along a specific curve?
- curve on manifold parametrised by a continuously changing real parameter λ : $\mathbf{x}(\lambda) = \{x^\mu(\lambda)\}$ in a coordinate basis
- can define tangent vectors along the curve, i.e.

$$\vec{V}(\lambda) := \frac{d\vec{x}}{d\lambda}$$

GR: directional deriv.: $\langle \tilde{\nabla} \vec{A}, \vec{V} \rangle$

- $\tilde{\nabla} \phi, \tilde{\nabla} \vec{A}, \tilde{\nabla} \tilde{A}$ gave how the fields ϕ, \vec{A} , or \tilde{A} change around the manifold in general
- how about moving along a specific curve?
- curve on manifold parametrised by a continuously changing real parameter λ : $\mathbf{x}(\lambda) = \{x^\mu(\lambda)\}$ in a coordinate basis
- can define tangent vectors along the curve, i.e.

$$\vec{V}(\lambda) := \frac{d\vec{x}}{d\lambda} = \frac{dx^\mu}{d\lambda} \vec{e}_\mu$$

GR: directional deriv.: $\langle \tilde{\nabla} \vec{A}, \vec{V} \rangle$

- $\tilde{\nabla} \phi, \tilde{\nabla} \vec{A}, \tilde{\nabla} \tilde{A}$ gave how the fields $\phi, \vec{A},$ or \tilde{A} change around the manifold in general
- how about moving along a specific curve?
- curve on manifold parametrised by a continuously changing real parameter $\lambda: \mathbf{x}(\lambda) = \{x^\mu(\lambda)\}$ in a coordinate basis
- can define tangent vectors along the curve, i.e.

$$\vec{V}(\lambda) := \frac{d\vec{x}}{d\lambda} = \frac{dx^\mu}{d\lambda} \vec{e}_\mu$$

warning: $\{x^\mu(\lambda)\}$ at some λ on the manifold is a point on the manifold but NOT a vector; while $d\vec{x}$ — in the tangent space — IS a vector

GR: directional deriv.: $\langle \tilde{\nabla} \vec{A}, \vec{V} \rangle$

using $\vec{V}(\lambda) := \frac{d\vec{x}}{d\lambda}$, project covariant derivative to curve
using scalar product \langle , \rangle



GR: directional deriv.: $\langle \tilde{\nabla} \vec{A}, \vec{V} \rangle$

using $\vec{V}(\lambda) := \frac{d\vec{x}}{d\lambda}$, project covariant derivative to curve
using scalar product \langle , \rangle

$$\frac{d\phi}{d\lambda} \equiv \nabla_V \phi := \langle \tilde{\nabla} \phi, \vec{V} \rangle$$



GR: directional deriv.: $\langle \tilde{\nabla} \vec{A}, \vec{V} \rangle$

using $\vec{V}(\lambda) := \frac{d\vec{x}}{d\lambda}$, project covariant derivative to curve
using scalar product \langle , \rangle

$$\frac{d\phi}{d\lambda} \equiv \nabla_V \phi := \langle \tilde{\nabla} \phi, \vec{V} \rangle$$

or in a coordinate basis...



GR: directional deriv.: $\langle \tilde{\nabla} \vec{A}, \vec{V} \rangle$

using $\vec{V}(\lambda) := \frac{d\vec{x}}{d\lambda}$, project covariant derivative to curve
using scalar product \langle , \rangle

$$\begin{aligned} \frac{d\phi}{d\lambda} &\equiv \nabla_V \phi := \langle \tilde{\nabla} \phi, \vec{V} \rangle \\ &= V^\mu \partial_\mu \phi \end{aligned}$$



GR: directional deriv.: $\langle \tilde{\nabla} \vec{A}, \vec{V} \rangle$

using $\vec{V}(\lambda) := \frac{d\vec{x}}{d\lambda}$, project covariant derivative to curve
using scalar product \langle , \rangle

$$\frac{d\phi}{d\lambda} \equiv \nabla_V \phi := \langle \tilde{\nabla} \phi, \vec{V} \rangle$$

$$= V^\mu \partial_\mu \phi$$

∇_V written by Bertschinger without $\vec{}$ or $\tilde{}$ because $\nabla_V \mathbf{T}$ of tensor \mathbf{T} has the same tensor order as \mathbf{T}



GR: directional deriv.: $\langle \tilde{\nabla} \vec{A}, \vec{V} \rangle$

using $\vec{V}(\lambda) := \frac{d\vec{x}}{d\lambda}$, project covariant derivative to curve
using scalar product \langle , \rangle

$$\frac{d\phi}{d\lambda} \equiv \nabla_V \phi := \langle \tilde{\nabla} \phi, \vec{V} \rangle$$

$$= V^\mu \partial_\mu \phi$$

for a vector field:

GR: directional deriv.: $\langle \tilde{\nabla} \vec{A}, \vec{V} \rangle$

using $\vec{V}(\lambda) := \frac{d\vec{x}}{d\lambda}$, project covariant derivative to curve
using scalar product \langle , \rangle

$$\frac{d\phi}{d\lambda} \equiv \nabla_V \phi := \langle \tilde{\nabla} \phi, \vec{V} \rangle$$

$$= V^\mu \partial_\mu \phi$$

$$\frac{d\vec{A}}{d\lambda} \equiv \nabla_V \vec{A} := \langle \tilde{\nabla} \vec{A}, \vec{V} \rangle$$



GR: directional deriv.: $\langle \tilde{\nabla} \vec{A}, \vec{V} \rangle$

using $\vec{V}(\lambda) := \frac{d\vec{x}}{d\lambda}$, project covariant derivative to curve
using scalar product \langle , \rangle

$$\frac{d\phi}{d\lambda} \equiv \nabla_V \phi := \langle \tilde{\nabla} \phi, \vec{V} \rangle$$

$$= V^\mu \partial_\mu \phi$$

$$\frac{d\vec{A}}{d\lambda} \equiv \nabla_V \vec{A} := \langle \tilde{\nabla} \vec{A}, \vec{V} \rangle$$

or in a coordinate basis...



GR: directional deriv.: $\langle \tilde{\nabla} \vec{A}, \vec{V} \rangle$

using $\vec{V}(\lambda) := \frac{d\vec{x}}{d\lambda}$, project covariant derivative to curve
using scalar product \langle , \rangle

$$\frac{d\phi}{d\lambda} \equiv \nabla_V \phi := \langle \tilde{\nabla} \phi, \vec{V} \rangle$$

$$= V^\mu \partial_\mu \phi$$

$$\frac{d\vec{A}}{d\lambda} \equiv \nabla_V \vec{A} := \langle \tilde{\nabla} \vec{A}, \vec{V} \rangle$$

$$= V^\mu (\tilde{\nabla} \vec{A})_\mu$$

GR: directional deriv.: $\langle \tilde{\nabla} \vec{A}, \vec{V} \rangle$

using $\vec{V}(\lambda) := \frac{d\vec{x}}{d\lambda}$, project covariant derivative to curve
using scalar product \langle , \rangle

$$\frac{d\phi}{d\lambda} \equiv \nabla_V \phi := \langle \tilde{\nabla} \phi, \vec{V} \rangle$$

$$= V^\mu \partial_\mu \phi$$

$$\frac{d\vec{A}}{d\lambda} \equiv \nabla_V \vec{A} := \langle \tilde{\nabla} \vec{A}, \vec{V} \rangle$$

$$= V^\mu (\nabla_\mu A^\nu) \vec{e}_\nu$$

GR: directional deriv.: $\langle \tilde{\nabla} \vec{A}, \vec{V} \rangle$

using $\vec{V}(\lambda) := \frac{d\vec{x}}{d\lambda}$, project covariant derivative to curve
using scalar product \langle , \rangle

$$\frac{d\phi}{d\lambda} \equiv \nabla_V \phi := \langle \tilde{\nabla} \phi, \vec{V} \rangle$$

$$= V^\mu \partial_\mu \phi$$

$$\frac{d\vec{A}}{d\lambda} \equiv \nabla_V \vec{A} := \langle \tilde{\nabla} \vec{A}, \vec{V} \rangle$$

$$= V^\mu (\nabla_\mu A^\nu) \vec{e}_\nu$$

$$= V^\mu (A^\nu_{,\mu} + A^\kappa \Gamma^\nu_{\kappa\mu}) \vec{e}_\nu$$



GR: directional deriv.: $\langle \tilde{\nabla} \vec{A}, \vec{V} \rangle$

using $\vec{V}(\lambda) := \frac{d\vec{x}}{d\lambda}$, project covariant derivative to curve
using scalar product \langle , \rangle

$$\frac{d\phi}{d\lambda} \equiv \nabla_V \phi := \langle \tilde{\nabla} \phi, \vec{V} \rangle$$

$$= V^\mu \partial_\mu \phi$$

$$\frac{d\vec{A}}{d\lambda} \equiv \nabla_V \vec{A} := \langle \tilde{\nabla} \vec{A}, \vec{V} \rangle$$

$$= V^\mu (\nabla_\mu A^\nu) \vec{e}_\nu$$

$$= V^\mu (A^\nu_{,\mu} + A^\kappa \Gamma^\nu_{\kappa\mu}) \vec{e}_\nu$$

so in a coord basis,

$$\nabla_V \vec{A} = \left(\frac{dA^\nu}{d\lambda} + V^\mu A^\kappa \Gamma^\nu_{\kappa\mu} \right) \vec{e}_\nu$$

GR: directional deriv.: $\langle \tilde{\nabla} \vec{A}, \vec{V} \rangle$

special (interesting) case: vector field \vec{A} and curve with tangents $\vec{V} := \frac{d\vec{x}}{d\lambda}$ where \vec{A} "locally does not change direction"



GR: directional deriv.: $\langle \tilde{\nabla} \vec{A}, \vec{V} \rangle$

special (interesting) case: vector field \vec{A} and curve with tangents $\vec{V} := \frac{d\vec{x}}{d\lambda}$ where \vec{A} "locally does not change direction"

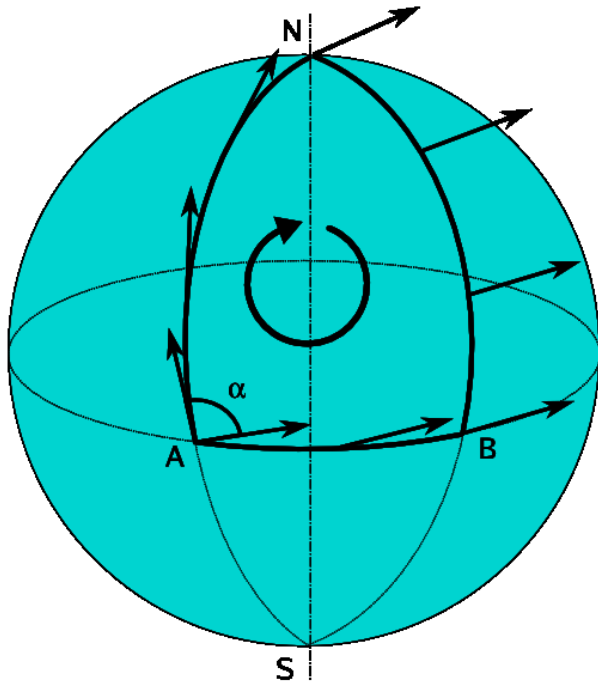
i.e. $\nabla_V \vec{A} = 0$

$\nabla_V \vec{A} = 0$ defn: parallel transport of \vec{A} along path $\mathbf{x}(\lambda)$

where $\vec{V} := \frac{d\vec{x}}{d\lambda}$

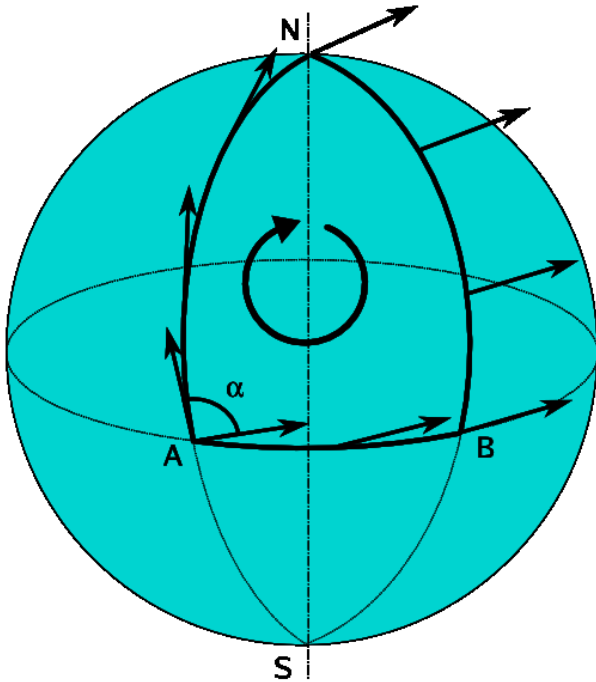
GR: directional deriv.: $\langle \tilde{\nabla} \vec{A}, \vec{V} \rangle$

example:



GR: directional deriv.: $\langle \tilde{\nabla} \vec{A}, \vec{V} \rangle$

example:



on S^2 , parallel transport of \vec{A} around a closed loop does not conserve \vec{A} 's direction



GR: directional deriv.: $\langle \tilde{\nabla} \vec{A}, \vec{V} \rangle$

$$\boxed{\nabla_V \vec{V} = 0} \text{ defn: } \underline{\text{w:geodesic}}$$



GR: directional deriv.: $\langle \tilde{\nabla} \vec{A}, \vec{V} \rangle$

$\nabla_V \vec{V} = 0$ defn: w:geodesic

- more general definition of “straight line” than “shortest distance between two points”
- tensorial definition — independent of coordinate basis
- allows more than one “straight line” between two points a and b in a manifold — consider S^2 , T^3

GR: directional deriv.: $\langle \tilde{\nabla} \vec{A}, \vec{V} \rangle$

$\nabla_V \vec{V} = 0$ defn: w:geodesic

- more general definition of “straight line” than “shortest distance between two points”
- tensorial definition — independent of coordinate basis
- allows more than one “straight line” between two points a and b in a manifold — consider S^2 , T^3

i.e. $\left(\frac{dV^\nu}{d\lambda} + V^\mu V^\kappa \Gamma_{\kappa\mu}^\nu \right) \vec{e}_\nu = \vec{0}$

GR: directional deriv.: $\langle \tilde{\nabla} \vec{A}, \vec{V} \rangle$

$\nabla_V \vec{V} = 0$ defn: w:geodesic

- more general definition of “straight line” than “shortest distance between two points”
- tensorial definition — independent of coordinate basis
- allows more than one “straight line” between two points a and b in a manifold — consider S^2 , T^3

i.e. $\frac{dV^\nu}{d\lambda} + V^\mu V^\kappa \Gamma_{\kappa\mu}^\nu = 0 \quad \forall \nu$

GR: directional deriv.: $\langle \tilde{\nabla} \vec{A}, \vec{V} \rangle$

$\nabla_V \vec{V} = 0$ defn: w:geodesic

- more general definition of “straight line” than “shortest distance between two points”
- tensorial definition — independent of coordinate basis
- allows more than one “straight line” between two points a and b in a manifold — consider S^2 , T^3

i.e. $\frac{d^2 x^\nu}{d\lambda^2} + \frac{dx^\mu}{d\lambda} \frac{dx^\kappa}{d\lambda} \Gamma_{\kappa\mu}^\nu = 0 \quad \forall \nu$

GR: directional deriv.: $\langle \tilde{\nabla} \vec{A}, \vec{V} \rangle$

$\nabla_V \vec{V} = 0$ defn: w:geodesic

- more general definition of “straight line” than “shortest distance between two points”
- tensorial definition — independent of coordinate basis
- allows more than one “straight line” between two points a and b in a manifold — consider S^2 , T^3

i.e. $\frac{d^2 x^\nu}{d\lambda^2} + \frac{dx^\mu}{d\lambda} \frac{dx^\kappa}{d\lambda} \Gamma_{\kappa\mu}^\nu = 0 \quad \forall \nu$

cf w:Euler-Lagrange equation

GR: parallel transp. @ closed curve

parallel transport around "small" parallelogram in two directions $d\vec{x}_1, d\vec{x}_2,$

("1" and "2" are not component indices here)



GR: parallel transp. @ closed curve

parallel transport around "small" parallelogram in two directions $d\vec{x}_1, d\vec{x}_2,$

What is the change in \vec{A} after parallel transport around the closed loop $d\vec{x}_1, d\vec{x}_2, -d\vec{x}_1, -d\vec{x}_2$?



GR: parallel transp. @ closed curve

parallel transport around "small" parallelogram in two directions $d\vec{x}_1, d\vec{x}_2,$

What is the change in \vec{A} after parallel transport around the closed loop $d\vec{x}_1, d\vec{x}_2, -d\vec{x}_1, -d\vec{x}_2$?

$\propto \vec{A}$



GR: parallel transp. @ closed curve

parallel transport around "small" parallelogram in two directions $d\vec{x}_1, d\vec{x}_2$,

What is the change in \vec{A} after parallel transport around the closed loop $d\vec{x}_1, d\vec{x}_2, -d\vec{x}_1, -d\vec{x}_2$?

$$\propto \vec{A}$$

$$\propto d\vec{x}_1, d\vec{x}_2$$



GR: parallel transp. @ closed curve

parallel transport around "small" parallelogram in two directions $d\vec{x}_1, d\vec{x}_2$,

What is the change in \vec{A} after parallel transport around the closed loop $d\vec{x}_1, d\vec{x}_2, -d\vec{x}_1, -d\vec{x}_2$?

\Rightarrow must exist a tensor \mathbf{R} that is a function of 3 vectors ("inputs"),

i.e. is a \otimes of 3 one-forms

GR: parallel transp. @ closed curve

parallel transport around "small" parallelogram in two directions $d\vec{x}_1, d\vec{x}_2$,

What is the change in \vec{A} after parallel transport around the closed loop $d\vec{x}_1, d\vec{x}_2, -d\vec{x}_1, -d\vec{x}_2$?

\Rightarrow must exist a tensor \mathbf{R} that is a function of 3 vectors ("inputs"),

i.e. has 3 covariant \otimes components

GR: parallel transp. @ closed curve

parallel transport around "small" parallelogram in two directions $d\vec{x}_1, d\vec{x}_2$,

What is the change in \vec{A} after parallel transport around the closed loop $d\vec{x}_1, d\vec{x}_2, -d\vec{x}_1, -d\vec{x}_2$?

\Rightarrow must exist a tensor \mathbf{R} that is a function of 3 vectors ("inputs"),

i.e. is a $(?, 3)$ tensor

GR: parallel transp. @ closed curve

parallel transport around "small" parallelogram in two directions $d\vec{x}_1, d\vec{x}_2$,

What is the change in \vec{A} after parallel transport around the closed loop $d\vec{x}_1, d\vec{x}_2, -d\vec{x}_1, -d\vec{x}_2$?

\Rightarrow must exist a tensor \mathbf{R} that is a function of 3 vectors and behaves like a vector (when applied to 3 vectors) i.e. a $(1, 3)$ tensor

GR: parallel transp. @ closed curve

parallel transport around "small" parallelogram in two directions $d\vec{x}_1, d\vec{x}_2$,

What is the change in \vec{A} after parallel transport around the closed loop $d\vec{x}_1, d\vec{x}_2, -d\vec{x}_1, -d\vec{x}_2$?

\Rightarrow must exist a tensor \mathbf{R} that is a function of 3 vectors and behaves like a vector (when applied to 3 vectors)

i.e. a $(1, 3)$ tensor

defn: $-\mathbf{R}(\cdot, \vec{A}, d\vec{x}_1, d\vec{x}_2) := d\vec{A}(\cdot)$

GR: parallel transp. @ closed curve

parallel transport around "small" parallelogram in two directions $d\vec{x}_1, d\vec{x}_2,$

What is the change in \vec{A} after parallel transport around the closed loop $d\vec{x}_1, d\vec{x}_2, -d\vec{x}_1, -d\vec{x}_2$?

\Rightarrow must exist a tensor \mathbf{R} that is a function of 3 vectors and behaves like a vector (when applied to 3 vectors)

i.e. a $(1, 3)$ tensor

defn: $-\mathbf{R}(\cdot, \vec{A}, d\vec{x}_1, d\vec{x}_2) := d\vec{A}(\cdot)$

(minus sign convention: MTW1973, Bertschinger)

w: Riemann curvature tensor

GR: parallel transp. @ closed curve

parallel transport around “small” parallelogram in two directions $d\vec{x}_1, d\vec{x}_2,$

What is the change in \vec{A} after parallel transport around the closed loop $d\vec{x}_1, d\vec{x}_2, -d\vec{x}_1, -d\vec{x}_2$?

\Rightarrow must exist a tensor \mathbf{R} that is a function of 3 vectors and behaves like a vector (when applied to 3 vectors) i.e. a $(1, 3)$ tensor

defn: $-\mathbf{R}(\cdot, \vec{A}, d\vec{x}_1, d\vec{x}_2) := d\vec{A}(\cdot)$

(minus sign convention: MTW1973, Bertschinger)

w: Riemann curvature tensor

$$d\vec{A}(\cdot) = -R^\mu_{\nu\alpha\beta} A^\nu dx_1^\alpha dx_2^\beta \vec{e}_\mu(\cdot)$$

GR: parallel transp. @ closed curve

parallel transport around “small” parallelogram in two directions $d\vec{x}_1, d\vec{x}_2,$

What is the change in \vec{A} after parallel transport around the closed loop $d\vec{x}_1, d\vec{x}_2, -d\vec{x}_1, -d\vec{x}_2$?

\Rightarrow must exist a tensor \mathbf{R} that is a function of 3 vectors and behaves like a vector (when applied to 3 vectors)

i.e. a $(1, 3)$ tensor

defn: $-\mathbf{R}(\cdot, \vec{A}, d\vec{x}_1, d\vec{x}_2) := d\vec{A}(\cdot)$

(minus sign convention: MTW1973, Bertschinger)

w: Riemann curvature tensor

$$d\vec{A}(\cdot) = -R^\mu_{\nu\alpha\beta} A^\nu dx_1^\alpha dx_2^\beta \vec{e}_\mu(\cdot)$$

i.e. $-\mathbf{R} = R^\mu_{\nu\alpha\beta} \vec{e}_\mu \otimes \tilde{e}^\nu \otimes \tilde{e}^\alpha \otimes \tilde{e}^\beta$

GR: parallel transp. @ closed curve

parallel transport around "small" parallelogram in two directions $d\vec{x}_1, d\vec{x}_2,$

What is the change in \vec{A} after parallel transport around the closed loop $d\vec{x}_1, d\vec{x}_2, -d\vec{x}_1, -d\vec{x}_2$?

\Rightarrow must exist a tensor \mathbf{R} that is a function of 3 vectors and behaves like a vector (when applied to 3 vectors)

i.e. a $(1, 3)$ tensor

defn:
$$-\mathbf{R}(\cdot, \vec{A}, d\vec{x}_1, d\vec{x}_2) := d\vec{A}(\cdot)$$

(minus sign convention: MTW1973, Bertschinger)

w: Riemann curvature tensor

$$d\vec{A}(\cdot) = -R^\mu_{\nu\alpha\beta} A^\nu dx_1^\alpha dx_2^\beta \vec{e}_\mu(\cdot)$$

i.e.
$$-\mathbf{R} = \sum_\mu \sum_\nu \sum_\alpha \sum_\beta R^\mu_{\nu\alpha\beta} \vec{e}_\mu \otimes \tilde{e}^\nu \otimes \tilde{e}^\alpha \otimes \tilde{e}^\beta$$



GR: Riemann tensor

how can R be evaluated?



GR: Riemann tensor



how can R be evaluated?

use covariant derivatives of covariant derivatives . . .



GR: Riemann tensor

how can R be evaluated?

use covariant derivatives of covariant derivatives ...

Ricci identity:

$$(\nabla_\alpha \nabla_\beta - \nabla_\beta \nabla_\alpha) A^\mu = R^\mu_{\nu\alpha\beta} A^\nu \text{ in a coord. basis}$$

GR: Riemann tensor



how can R be evaluated?

use covariant derivatives of covariant derivatives ...

Ricci identity:

$$(\nabla_\alpha \nabla_\beta - \nabla_\beta \nabla_\alpha) A^\mu = R^\mu_{\nu\alpha\beta} A^\nu \text{ in a coord. basis}$$

also written with commutator $[\ , \]$

$$[\nabla_\alpha, \nabla_\beta] A^\mu = R^\mu_{\nu\alpha\beta} A^\nu \text{ in a coordinate basis}$$



GR: Riemann tensor

how can R be evaluated?

use covariant derivatives of covariant derivatives ...

Ricci identity:

$$(\nabla_\alpha \nabla_\beta - \nabla_\beta \nabla_\alpha) A^\mu = R^\mu_{\nu\alpha\beta} A^\nu \text{ in a coord. basis}$$

also written with commutator $[\ , \]$

$$[\nabla_\alpha, \nabla_\beta] A^\mu = R^\mu_{\nu\alpha\beta} A^\nu \text{ in a coordinate basis}$$

using $\nabla_\alpha A^\mu$ from above and similar formulae, ...

$$R^\mu_{\nu\alpha\beta} A^\nu = (\Gamma^\mu_{\nu\beta,\alpha} - \Gamma^\mu_{\nu\alpha,\beta} + \Gamma^\mu_{\kappa\alpha} \Gamma^\kappa_{\nu\beta} - \Gamma^\mu_{\kappa\beta} \Gamma^\kappa_{\nu\alpha}) A^\nu$$

in a coord. basis

GR: Riemann tensor

how can R be evaluated?

use covariant derivatives of covariant derivatives ...

Ricci identity:

$$(\nabla_\alpha \nabla_\beta - \nabla_\beta \nabla_\alpha) A^\mu = R^\mu{}_{\nu\alpha\beta} A^\nu \text{ in a coord. basis}$$

also written with commutator $[\ , \]$

$$[\nabla_\alpha, \nabla_\beta] A^\mu = R^\mu{}_{\nu\alpha\beta} A^\nu \text{ in a coordinate basis}$$

using $\nabla_\alpha A^\mu$ from above and similar formulae, ...

$$R^\mu{}_{\nu\alpha\beta} A^\nu = (\Gamma^\mu{}_{\nu\beta,\alpha} - \Gamma^\mu{}_{\nu\alpha,\beta} + \Gamma^\mu{}_{\kappa\alpha} \Gamma^\kappa{}_{\nu\beta} - \Gamma^\mu{}_{\kappa\beta} \Gamma^\kappa{}_{\nu\alpha}) A^\nu$$

in a coord. basis

- $\Gamma^\mu{}_{\nu\beta}$: sum over first order partial derivatives of $g_{\nu\kappa}, \dots$

GR: Riemann tensor

how can R be evaluated?

use covariant derivatives of covariant derivatives ...

Ricci identity:

$$(\nabla_\alpha \nabla_\beta - \nabla_\beta \nabla_\alpha) A^\mu = R^\mu_{\nu\alpha\beta} A^\nu \text{ in a coord. basis}$$

also written with commutator $[\ , \]$

$$[\nabla_\alpha, \nabla_\beta] A^\mu = R^\mu_{\nu\alpha\beta} A^\nu \text{ in a coordinate basis}$$

using $\nabla_\alpha A^\mu$ from above and similar formulae, ...

$$R^\mu_{\nu\alpha\beta} A^\nu = (\Gamma^\mu_{\nu\beta,\alpha} - \Gamma^\mu_{\nu\alpha,\beta} + \Gamma^\mu_{\kappa\alpha} \Gamma^\kappa_{\nu\beta} - \Gamma^\mu_{\kappa\beta} \Gamma^\kappa_{\nu\alpha}) A^\nu$$

in a coord. basis

- $\Gamma^\mu_{\nu\beta}$: sum over first order partial derivatives of $g_{\nu\kappa}, \dots$
- so R has second order partial derivatives of $g_{\nu\kappa}, \dots$

GR: Riemann tensor

- first order ∂ :

(pseudo-)manifold locally like \mathbb{R}^3 (M^4), \exists coords where $\Gamma_{\nu\beta}^{\mu} = 0$ locally

GR: Riemann tensor



- first order ∂ :

(pseudo-)manifold locally like \mathbb{R}^3 (M^4), \exists coords where $\Gamma_{\nu\beta}^{\mu} = 0$ locally

- second order ∂ :

(pseudo-)manifold globally like \mathbb{R}^3 (M^4) $\Leftrightarrow R_{\nu\alpha\beta}^{\mu}(\mathbf{x}) = 0 \forall \mathbf{x}$



GR: Bianchi, Ricci, Einstein

... second Bianchi identity:

$$\nabla_{\sigma} R^{\mu}_{\nu\kappa\lambda} + \nabla_{\kappa} R^{\mu}_{\nu\lambda\sigma} + \nabla_{\lambda} R^{\mu}_{\nu\sigma\kappa} = 0$$

GR: Bianchi, Ricci, Einstein

... second Bianchi identity:

$$\nabla_{\sigma} R^{\mu}_{\nu\kappa\lambda} + \nabla_{\kappa} R^{\mu}_{\nu\lambda\sigma} + \nabla_{\lambda} R^{\mu}_{\nu\sigma\kappa} = 0$$

w: Ricci curvature tensor (by components):

$$R_{\mu\nu} := R^{\alpha}_{\mu\alpha\nu}$$

GR: Bianchi, Ricci, Einstein

... second Bianchi identity:

$$\nabla_{\sigma} R^{\mu}_{\nu\kappa\lambda} + \nabla_{\kappa} R^{\mu}_{\nu\lambda\sigma} + \nabla_{\lambda} R^{\mu}_{\nu\sigma\kappa} = 0$$

w:Ricci curvature tensor (by components):

$$R_{\mu\nu} := R^{\alpha}_{\mu\alpha\nu}$$

w:scalar curvature \equiv Ricci scalar:

$$R := g^{\mu\nu} R_{\mu\nu}$$

GR: Bianchi, Ricci, Einstein

... second Bianchi identity:

$$\nabla_{\sigma} R^{\mu}_{\nu\kappa\lambda} + \nabla_{\kappa} R^{\mu}_{\nu\lambda\sigma} + \nabla_{\lambda} R^{\mu}_{\nu\sigma\kappa} = 0$$

w:Ricci curvature tensor (by components):

$$R_{\mu\nu} := R^{\alpha}_{\mu\alpha\nu}$$

w:scalar curvature \equiv Ricci scalar:

$$R := g^{\mu\nu} R_{\mu\nu}$$

warning: "R" written **coordinate-free** may mean:

- an order 4, dimension 64 tensor \mathbf{R} ;
- an order 2, dimension 16 tensor \mathbf{R} or R ; or
- an order 0, dimension 1 tensor \equiv scalar R
- all three are fields over a spacetime 4-manifold

GR: Bianchi, Ricci, Einstein

... second Bianchi identity:

$$\nabla_{\sigma} R^{\mu}_{\nu\kappa\lambda} + \nabla_{\kappa} R^{\mu}_{\nu\lambda\sigma} + \nabla_{\lambda} R^{\mu}_{\nu\sigma\kappa} = 0$$

w: Ricci curvature tensor (by components):

$$R_{\mu\nu} := R^{\alpha}_{\mu\alpha\nu}$$

w: scalar curvature \equiv Ricci scalar:

$$R := g^{\mu\nu} R_{\mu\nu}$$

w: Proofs involving covariant derivatives

$$\dots \nabla_{\nu} (R^{\mu\nu} - \frac{1}{2} g^{\mu\nu} R) = 0$$

GR: Bianchi, Ricci, Einstein

... second Bianchi identity:

$$\nabla_{\sigma} R^{\mu}_{\nu\kappa\lambda} + \nabla_{\kappa} R^{\mu}_{\nu\lambda\sigma} + \nabla_{\lambda} R^{\mu}_{\nu\sigma\kappa} = 0$$

w:Ricci curvature tensor (by components):

$$R_{\mu\nu} := R^{\alpha}_{\mu\alpha\nu}$$

w:scalar curvature \equiv Ricci scalar:

$$R := g^{\mu\nu} R_{\mu\nu}$$

w:Proofs involving covariant derivatives

$$\dots \nabla_{\nu} (R^{\mu\nu} - \frac{1}{2} g^{\mu\nu} R) = 0$$

defn Einstein tensor (by components):

$$G^{\mu\nu} := R^{\mu\nu} - \frac{1}{2} g^{\mu\nu} R$$

$$\Rightarrow \nabla_{\nu} G^{\mu\nu} = 0$$

GR: Bianchi, Ricci, Einstein

... second Bianchi identity:

$$\nabla_{\sigma} R^{\mu}_{\nu\kappa\lambda} + \nabla_{\kappa} R^{\mu}_{\nu\lambda\sigma} + \nabla_{\lambda} R^{\mu}_{\nu\sigma\kappa} = 0$$

w:Ricci curvature tensor (by components):

$$R_{\mu\nu} := R^{\alpha}_{\mu\alpha\nu}$$

w:scalar curvature \equiv Ricci scalar:

$$R := g^{\mu\nu} R_{\mu\nu}$$

w:Proofs involving covariant derivatives

$$\dots \nabla_{\nu} (R^{\mu\nu} - \frac{1}{2} g^{\mu\nu} R) = 0$$

defn Einstein tensor (by components):

$$G^{\mu\nu} := R^{\mu\nu} - \frac{1}{2} g^{\mu\nu} R$$

$$\Rightarrow \nabla_{\nu} G^{\mu\nu} = 0$$

w>List of formulas in Riemannian geometry



GR: other basic topics

w: Stress-energy tensor



GR: other basic topics

w:Stress-energy tensor

w:Einstein field equations

$\mathbf{G} = 8\pi \mathbf{T}$ (as tensors)

$G_{\mu\nu} = 8\pi T_{\mu\nu}$ (by components)



GR: other basic topics

w:Stress-energy tensor

w:Einstein field equations

$\mathbf{G} = 8\pi \mathbf{T}$ (as tensors)

$G_{\mu\nu} = 8\pi T_{\mu\nu}$ (by components)

w:Equivalence principle

can be thought of as a *consequence* of the model

GR: other basic topics

w:Stress-energy tensor

w:Einstein field equations

$\mathbf{G} = 8\pi \mathbf{T}$ (as tensors)

$G_{\mu\nu} = 8\pi T_{\mu\nu}$ (by components)

w:Equivalence principle

can be thought of as a *consequence* of the model

w:Schwarzschild metric

GR: other basic topics

w:Stress-energy tensor

w:Einstein field equations

$\mathbf{G} = 8\pi \mathbf{T}$ (as tensors)

$G_{\mu\nu} = 8\pi T_{\mu\nu}$ (by components)

w:Equivalence principle

can be thought of as a *consequence* of the model

w:Schwarzschild metric

w:Friedmann-Lemaître-Robertson-Walker metric

GR: other basic topics

w:Stress-energy tensor

w:Einstein field equations

$\mathbf{G} = 8\pi \mathbf{T}$ (as tensors)

$G_{\mu\nu} = 8\pi T_{\mu\nu}$ (by components)

w:Equivalence principle

can be thought of as a *consequence* of the model

w:Schwarzschild metric

w:Friedmann-Lemaître-Robertson-Walker metric

maxima - component tensor packet ctensor; itensor

GR: other basic topics

w:Stress-energy tensor

w:Einstein field equations

$\mathbf{G} = 8\pi \mathbf{T}$ (as tensors)

$G_{\mu\nu} = 8\pi T_{\mu\nu}$ (by components)

w:Equivalence principle

can be thought of as a *consequence* of the model

w:Schwarzschild metric

w:Friedmann-Lemaître-Robertson-Walker metric

maxima - component tensor packet ctensor; itensor

w:ADM formalism

GR: other basic topics

w:Stress-energy tensor

w:Einstein field equations

$\mathbf{G} = 8\pi \mathbf{T}$ (as tensors)

$G_{\mu\nu} = 8\pi T_{\mu\nu}$ (by components)

w:Equivalence principle

can be thought of as a *consequence* of the model

w:Schwarzschild metric

w:Friedmann-Lemaître-Robertson-Walker metric

maxima - component tensor packet ctensor; itensor

w:ADM formalism

Cactus - <http://cactuscode.org>