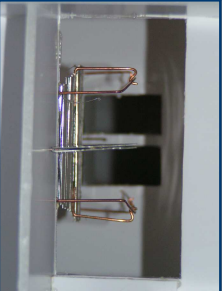
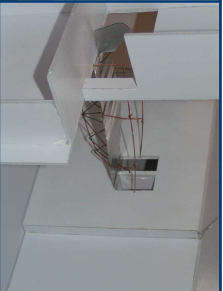




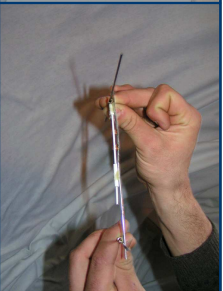
Modell 1:50:
Nordperspektive



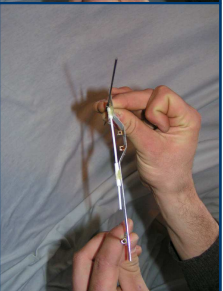
Treppenperspektive



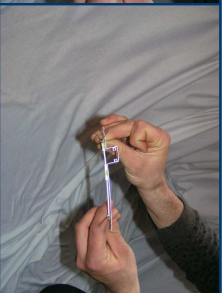
Stufenmodell 1:20:
breiter Zustand



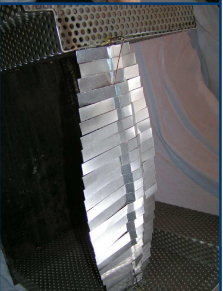
Aufaltung



schmäler Zustand > Sitzgelegenheit



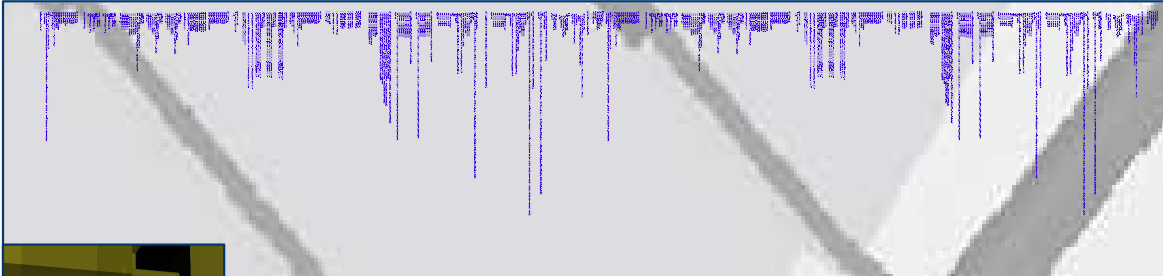
Flexibles Modell 1:20:
Nordperspektive



Draufsicht

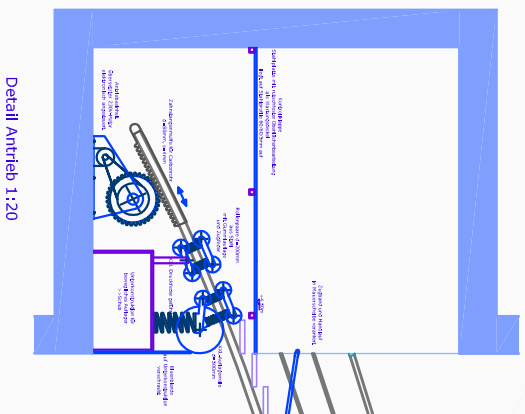


Blender-Skript
Computermodell

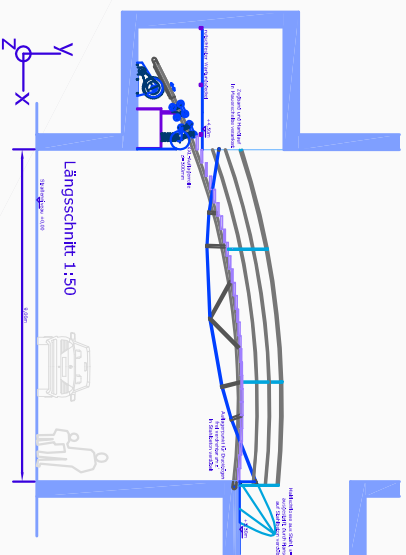


quickbridge lightweight

hb2_ue_neumayr_kolhaupt_lochmann

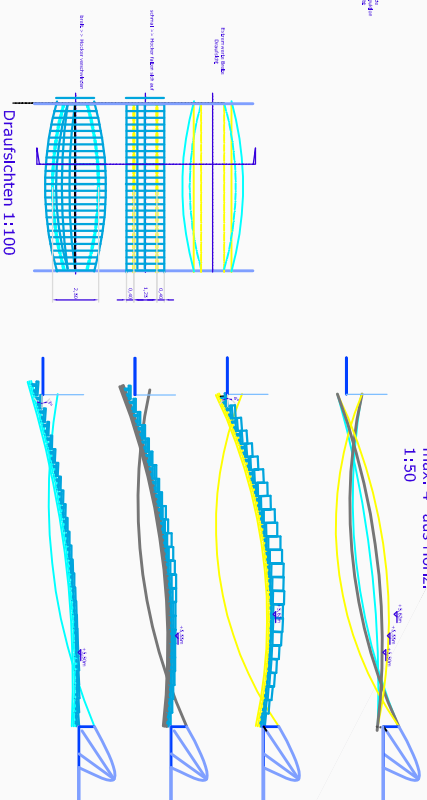


Detail Antrieb 1:20

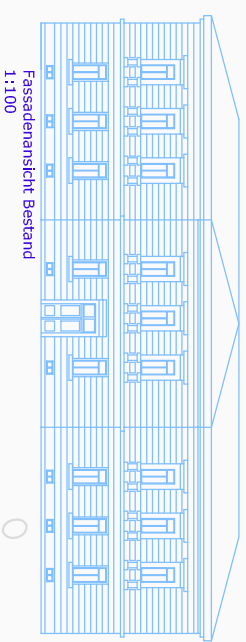


Längsschnitt 1:50

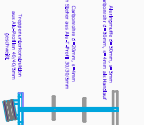
Extremwerte für Stufenneigung:
max. 4° aus Horiz.
1:50



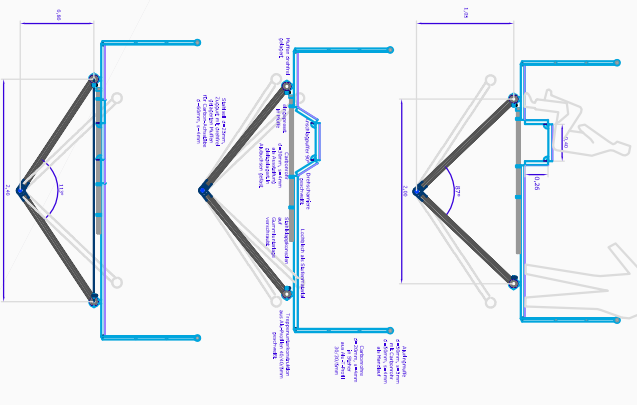
Draufsichten 1:100



Fassadenansicht Bestand
1:100

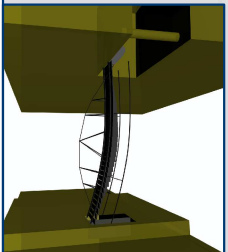


Handlauf-Detail 1:20



Querschnitt
Stufendetail
1:20

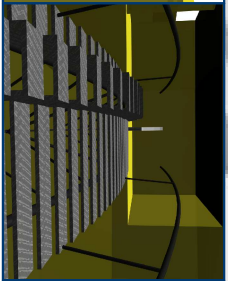
Computermodell:
Nordperspektive schmal



Nordperspektive breit

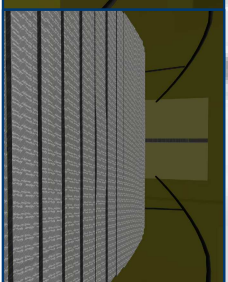


Treppenperspektive aufgefaltet

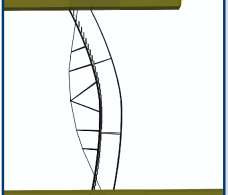


>>

flach



Stüdperspektive breit



Stüdperspektive schmal

