

**JUNCTION 11**

**Rough Cuts**

**MOJO'S**

**M.A.S.I.V.**

**COURSE REPS**

**RA TIME**

**GAME ON**

**Reading University Students'  
Union Handbook 2006/2007**

**SOCIETIES**

**THURSDAY QUIZ NIGHT**

n u s

**Aspirin**

**Sports**

**STUDENT  
advice**

**and MORNING**

**spark\***



**LIBERATION**

**NURSERY**

**RU Being Served**

**TUESDAY  
COMEDY  
NIGHT**

**NIGHT  
LINE**

Reading University Students' Union  
**RUSU**

**CANDY  
CLUB**



## FABRICLIVE.

EVERY FRIDAY  
COMING SOON

2 MANY DJs  
ADAM F  
ADAM FREELAND  
ANDY C  
DIPLO  
DJ FRESH  
DJ HYPE  
EVIL NINE  
GOLDIE  
JAMES LAVELLE  
JOE RANSOM  
JUSTICE  
KRAFTY KUTS  
LTJ BUKEM  
PENDULUM  
PLUMP DJs  
SCRATCH PERVERTS  
STANTON WARRIORS  
SWITCH  
THE FILTHY DUKES  
THE GLIMMERS  
PLUS MANY MORE

## fabric

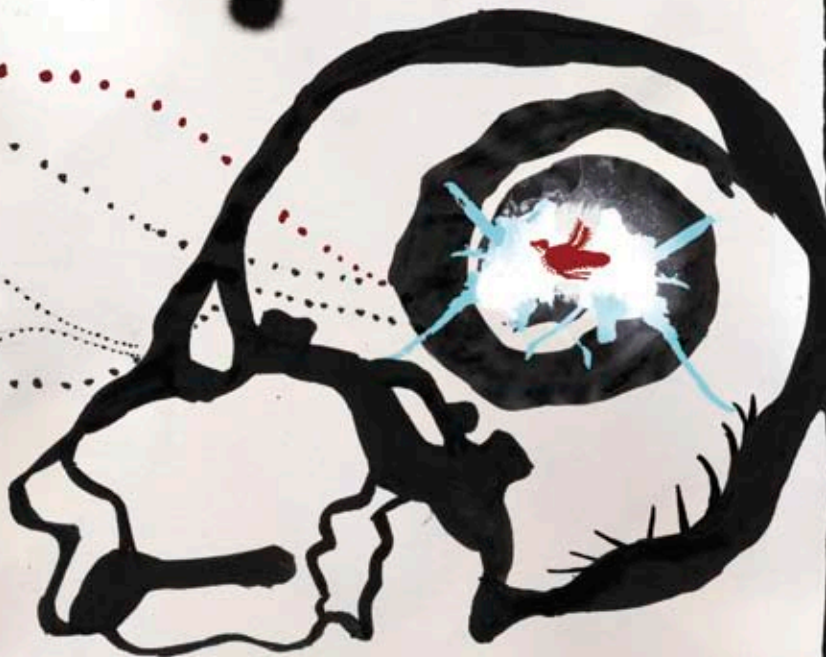
EVERY SATURDAY  
COMING SOON

CRAIG RICHARDS  
TERRY FRANCIS  
ADAM BEYER  
ANDREW WEATHERALL  
CARL CRAIG  
CLONE RECORDS  
DAVE CLARKE  
DJ HEATHER  
ELLEN ALLIEN  
IVAN SMAGGHE  
IZ & DIZ  
JAMES HOLDEN  
LUCIANO  
M.A.N.D.Y.  
MAGDA  
MATTHEW DEAR  
RICARDO VILLALOBOS  
RICHIE HAWTIN  
ROB DA BANK  
RUB-N-TUG  
STEVE BUG  
TIEFSCHWARZ  
WIGGLE  
PLUS MANY MORE

FABRIC 77a CHARTERHOUSE STREET  
LONDON EC1 INFORMATION: 020 7336 8898  
TICKETS AVAILABLE FROM TICKETMASTER  
0870 902 0001 AND FROM OUR WEBSITE:  
[WWW.FABRICLONDON.COM](http://WWW.FABRICLONDON.COM)  
[MYSPACE.COM/FABRICFAMILY](http://MYSPACE.COM/FABRICFAMILY)



**fabricfirst**  
Join The Club



# Contents

4	<b>Introduction</b>	39	<b>Nick Smith: VP Welfare</b>
7	<b>Nightlife</b>	40	<b>Sam Hibbs: VP Sports and Societies</b>
	Monday: Rough Cuts		
	Tuesday: Comedy and Open Mic	41	<b>Emily Beardsmore: VP Development</b>
	Wednesday: Extra Time		
	Thursday: Quiz and Karaoke	42	<b>Ryan Bird: VP Education</b>
	Friday: Live & Unlimited	43	<b>Student Trustees</b>
	Friday: Bulmershe Breezing	45	<b>Student Representation and Development</b>
	Saturday: Candy Club		
15	<b>Food and Drink</b>	46	<b>Liberation Groups</b>
16	<b>3Sixty</b>	47	<b>Course Representatives</b>
17	<b>Mojo's Bar</b>	48	<b>Societies at RUSU</b>
18	<b>Mondial</b>	50	<b>Sports at RUSU</b>
19	<b>Breeze Bar</b>	52	<b>RAGS</b>
20	<b>Fresh Start</b>	53	<b>Nightline</b>
21	<b>Shops and Services</b>	54	<b>RU Ready? and Active in Reading</b>
22	<b>RU Being Served</b>	55	<b>MASIV</b>
23	<b>Bully's Shop</b>	56	<b>Campaigns Forum</b>
24	<b>Game On</b>	57	<b>Spark</b>
27	<b>Freshers Fayre</b>	58	<b>Junction 11</b>
28	<b>Freshers Fortnight</b>	59	<b>Website</b>
	<b>Entertainment Planner</b>	60	<b>Welcome to The Hub</b>
30	<b>Freshers Ball</b>	62	<b>Student Advice Service</b>
31	<b>NUS Registration and membership</b>	63	<b>Nursery</b>
32	<b>NUS Extra</b>	64	<b>Dates for your diary</b>
34	<b>Register online</b>	65	<b>Night Bus</b>
35	<b>What we do</b>	66	<b>Useful numbers</b>
36	<b>Dave Lewis: President</b>		
38	<b>Mike Hance: VP Equal Opportunities and Ethics</b>		



Reading University Students' Union is the membership organisation of all students at the University of Reading.

Student representation at Reading has been around since 1896, from the very first day of the University Extension College in Reading. Over the next thirty years, as the College began to grow and develop into a University, students began to demand more from their University experience, more social opportunities and more student friendly services. With the establishment of the University in 1926, Reading University Students' Union was formally created to fight, deliver and win for students.

Over the next 80 years the Students' Union underwent major change, difficult choices and substantial building projects. Today we are located at the heart of Whiteknights campus, providing the link between all aspects of academic, social and residential life. We promote and represent students' interests and views, act as a voice for students, provide student-focused services but most importantly we continue to campaign, win and deliver for students.

Welcome to RUSU!

Every student is automatically a member of the Students' Union and are entitled to a membership card, being the Democracy Card or NUS Extra which incorporates the Democracy Card.

However, you get much more than just a card, you get relevant and important local and national RUSU campaigns, your interests, views and your opinion is represented and supported, but most importantly you are part of a community that supports each other, respects each other and engages with each other.

RUSU continues to be the centre of student life, and through our newspaper, a campus radio station, website, regular email newsletter and face to face contact, we keep you informed and up to date!

We run bars, shops and some of the best entertainment in the country, all here on campus. Whether you start them, run them or join them, RUSU supports over 100 sports clubs and societies – all of which are part of RUSU. The Students' Union relies on your continued support to develop opportunities for volunteers, support representation for disadvantaged groups and fund invaluable student welfare services.

We are proud to be part of a national campaigning and representation organisation, through the National Union of Students, for which we

reaffirmed our commitment during the previous academic year. NUS is one of the largest student organisations in the world fighting for collectivism, equality and democracy.

You get so much from being part of RUSU and this handbook will give you a taster of what RUSU is like but without your continued support, help and involvement we wouldn't be as strong as we are today.

Your unity keeps us strong.

RUSU is yours.

**Dave Lewis**  
RUSU President





# cerealworks<sup>TM</sup>

anytime anywhere

Checkout the new experience of cereal on the go, anytime anywhere.

## IT'S TIME TO THINK OUTSIDE THE BOX

Cerealworks allows you to create your own mix  
**Works For You**  
or choose from our house mix  
**Works For Us**

So come along to the only cereal bar in town, situated in the Students' Union opposite the main reception. Open Monday to Saturday.

**StudentCalls**  
...because talk should be cheap



StudentCalls gives you...

- FREE years line rental £6
- FREE call credit worth £20
- FREE CamriVox adapter worth £39

StudentCalls provides...

- FREE phone calls
- 1.5 pence per minute UK calls
- 1.8 pence per minute International calls

StudentCalls offers you...

- Buy 2 systems For less
- A wide range of phones to choose from
- Bulk-buy minutes e.g. 1000 China minutes For only £18



GO TO [www.studentcalls.net](http://www.studentcalls.net) FOR MORE INFORMATION OR TEXT 'studentcalls' to 64446

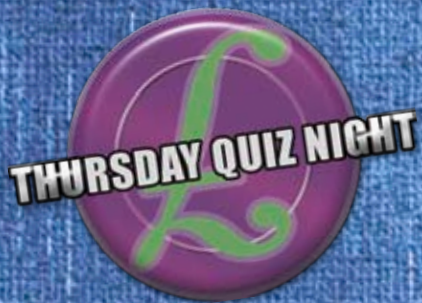


# Nightlife



live &  
unlimited


CANDY  
CLUB



# Open Mic Night



Open mic night is a great opportunity to get up on stage and perform. Entrance and performance are free so turn up early to guarantee a slot.

 **MOJO'S BAR**

8pm—11pm £1.50 per pint of Carling, Strongbow or Worthingtons





# TUESDAY COMEDY NIGHT

Tuesday 10th October at 3Sixty

A night of two parts, part one a great  
line up of stand up comedy featuring

RICHARD MORTON  
BENJAMIN CRELLIN  
Plus guest

## Part Two

TONY LEE,  
Comedy hypnotist  
Plus guest

Reading University Students' Union

Tuesday 17th October  
at Mojo's Bar

JASON ROUSE

NICK PAGE

Plus guest

 **MOJO'S BAR** 8pm - 11pm

£5 for a 4 pint jug of Carling, Strongbow or Worthingtons

# EXTRA TIME

**Wednesday night**  
**8pm till 2am**

**Snakebite £1.50 per pint (8pm - 10pm)**



**MOJO'S BAR**



*It's a night of three halves*





**THURSDAY QUIZ NIGHT**

&

**Karaoke**

@ MOJO'S BAR 

£6.00 for 4 pint jug of standard draught  
(Carling, Strongbow, Worthingtons)

8.00pm - 10.00pm

# Rough Cuts

## Live Music on Fridays at The Union

8pm-1am Free entry

£1.50 Standard draught  
(Worthington, Strongbow,  
Carling) 8-10pm



**MOJO'S BAR**

Reading University Students' Union

**JUNCTION 11**

**Spark\***  
Independent Student Weekly Since 1974



# BULMERSHE BREEZING

MUSIC THROUGH THE DECADES



Every Friday, 8pm - 2am  
£1.25 Single Smirnoff plus Shark (or post mix)  
8.00pm - 10.00pm

Every Saturday  
8pm - 2am

# CANDY CLUB

£1.25 Single Smirnoff plus Shark (or post mix)

MAJO'S BAR



*A night  
of sweet tunes*



# Food and Drink



# 3Sixty

Reading's premier venue, with the very best in sound and lighting effects, 3sixty hosts all the unions major events, including concerts, special theme nights and the legendary Wednesday Extra Time Night.

The venue is purpose made for entertainment and is the place to be for a great night out without even having to leave the campus.

During the day the atmosphere is more relaxing and the ideal place to sit and chat over a coffee or sandwich, or just watch the world go by.

3sixty is proud to have been awarded accreditation in 2006 to the Best Bar None scheme that was set up to monitor the standards of Corporate Social Responsibility in licensed premises. This award shows that the venue is operated to a very high standard and pays particular attention to the safety and welfare of its customers

3sixty is a non-smoking venue until 6pm.





# Mojo's Bar

## Open Monday to Saturday

The very heart of the Students' Union Mojo's bar is open six days a week from midday until late (closed on Sunday) and hosts a full range of events and special nights.

Food is available every day from midday onwards and the menu features a full range of hot as well as cold meals with a good vegetarian selection.

The bar offers a wide range of draught and bottled beers at very student

friendly prices with regular promotions during the week.

All the major sporting events are shown on the big screens

Mojo's bar is non-smoking until 6.00pm.



Menus are examples only.

# Cafe Mondial



Open Monday to Friday

8.30am – 4.30pm

During the day Café Mondial is the ideal place to meet friends and relax.

There is a full selection of hot drinks available and all coffee is made using only Fair Trade beans.

The range of freshly prepared food includes baguettes pastries and seasonal specials.

A selection of continental beers and alcoholic drinks are on offer from 11.00am.

At night Mondial is available for private parties and events, contact the RUSU Events Manager to discuss your requirements.

Café Mondial is a non-smoking venue at all times.



## Menu

Panninis	£1.95	Baguettes	£2.10
Freshly cooked to order, choose from the following fillings		Crusty Baguettes filled with the following tasty fillings	
Mexicana Cheese ✓		Cheese and Ham	
Mozzarella and Sundried Tomato ✓		Cheese and Tomato ✓	
Chicken Tikka		Egg Mayo and Cress ✓	
Chicken, Bacon and Sweetcorn		Beef and Horseradish	
Tuna, Sweetcorn		Homous and Lettuce ✓	
<b>Breakfast Specials</b>		<b>Afternoon Specials</b>	
Available from 8.30am 11.30am		Available from 2.30pm 4.30pm	
Bacon Roll served with a pot of tea	£2.00	Cream Tea	£2.25
Croissant and Juice	£1.50	Scone served with clotted cream, jam and a pot of tea	
Toasted Toastake	.95	Cornot Cake	£1.30
		Cheese Cake	£1.50
		Doughnuts	.35
		Homemade cookies	.35

A full range of Hot and Cold drinks are available all day, see separate menu for details.

✓ = Suitable for vegetarians



# Breeze Bar



Situated on the Bulmershe Campus Breeze Bar is a great daytime social space and the ideal place to meet up with friends.

On a Friday night Breeze Bar really comes alive and is host to the *Breezing through the Decades* party, doors open at 9.00pm and the event closes at 2.00am.

Breeze is also available for private parties. For details contact the RUSU Events Manager.

Breeze Bar is a no smoking area before 6pm.

£1.25 for single Smirnoff  
plus Shark (or post mix)  
Friday 8.00pm to 10.00pm



# FRESHSTART

Fresh start is the place to get a wide variety of hot and cold drinks when you are on the move.

Situated opposite café mondial the range of hot drink includes tea, coffee, cappuccino and hot chocolate.

Plus bottled water, freshly squeezed orange juice, fresh Frijj milkshakes and a range of smoothies.

All our smoothies are packed with delicious fruits, vegetables and natural products with no flavourings, syrups or filler ingredients such as yoghurt and ice.



n u s extra  
promotion

Get your first smoothie for £1.00



# Shops and Services



**RU Being Served**

# RU Being Served

Monday – Friday

8.30am – 8.00pm

Saturday

10.00am – 6.00pm

With new offers and promotions every term you are guaranteed some great savings.

Look out for the meal deal which offers an ideal solution to your lunch time hunger!

R U Being Served offers a wide variety of products and services including all your essentials and a few luxuries.

The range includes, fair-trade products, international foods, University of Reading merchandise, DVD rental, Threshers off licence and the irresistible pick & mix!



**RU Being Ser**

**n u s extra**  
promotion

Get your first  
DVD rental free



# Bully's Shop

Monday – Friday  
8.30am – 5.30pm

The local store for all Bulmershe students provides a core range of all the essentials.

Featuring the same great range of special offers as the Whiteknights store its certainly worth a visit.

Situated opposite Breeze Bar, it's conveniently situated right between the library, lecture rooms and halls.



# Game On

Game On provides some of the only gaming machines on campus.

Attractions include: Time Crisis, Air Hockey, American Pool, Table Football and online quiz machines.

So, your lecture was dull;  
you have half an hour  
until the next one; you've  
had your lunch;  
what do you do?  
Drive like a maniac?  
Shoot something? Dance  
your pants off? Blast  
some martians?

Get your Game On at  
RUSU.





# Endsleigh ad



# STA TRAVEL WELCOMES YOU TO READING

WORLD LEADERS IN STUDENT TRAVEL

LOW COST FLIGHTS

ADVENTURE TOURS

GAP YEARS

ROUND THE WORLD TRIPS

PACKAGE DEALS

COACH & RAIL PASSES

TRAVEL INSURANCE

ACCOMMODATION

WELL-TRAVELLED CONSULTANTS

ARE YOU A STUDENT OR UNDER 26?

CHEAP OR FLEXIBLE TRAVEL OR BOTH!  
24/7 GLOBAL TRAVEL HELP  
EXCLUSIVE TO STA TRAVEL

**blue** Ticket

THE STA TRAVEL BLUE TICKET™

ASK US ABOUT IT!

**STA TRAVEL**

VISIT US:

150 FRIAR STREET, READING

CALL: 0870 166 2631

EMAIL: [READING@STATRAVEL.CO.UK](mailto:READING@STATRAVEL.CO.UK)



# FRESHERS FAYRE

WED 4TH OCTOBER - SOCIETIES

THU 5TH OCTOBER - SPORTS

FRI 6TH OCTOBER - VOLUNTEERS



IN SIXTY AND THE MARQUEE  
AT RUSU CAR PARK



# FRESHERS FORTNIGHT E

**MONDAY**  
2ND OCT

**Scott Mills**

**TUESDAY**  
3RD OCT

**Live Band** *Rooster*

**WEDNESDAY**  
4TH OCT

**Extra Time**  
featuring special guests

**EXTRA TIME**

**THURSDAY**  
5TH OCT

**Trinity Karaoke**



THURSDAY QUIZ NIGHT

**Quiz and Karaoke**  
Sponsored by Shark  
WIN a surf board and other  
great prizes

**FRIDAY**  
6TH OCT

**Zane Lowe**  
plus guests

**SATURDAY**  
7TH OCT

**Candy Club**  
featuring special guests

**CANDY CLUB**



# ENTERTAINMENT PLANNER

**MONDAY**  
9TH OCT

## Tribute Concert

RED HOT CHILLI BEANS  
SCIZZOR SISTERS

**TUESDAY**  
10TH OCT

**Comedy Club in 3Sixty**  
featuring **TONY LEE** (hypnotist)  
and full comedy line-up



**WEDNESDAY**  
11TH OCT

## Extra Time

EXTRA TIME

**THURSDAY**  
12TH OCT

Today  
**Karaoke**  
10p

## Quiz and Karaoke



**FRIDAY**  
13TH OCT

**Freshers Ball**  
featuring **CLEM CURTIS**  
and **THE FOUNDATIONS**

and  
**CREW82**

**FRESHERS BALL**  
**2006**

**SATURDAY**  
14TH OCT

**CANDY**  
**CLUB**

## Candy Club

# FRESHERS BALL 2006

FEATURING **CLEM CURTIS**,  
**THE FOUNDATIONS** AND  
**CREW82**

**FRIDAY 13TH OCTOBER**

SEE [WWW.RUSU.CO.UK](http://WWW.RUSU.CO.UK) FOR MORE INFO

 **MOJO'S BAR**

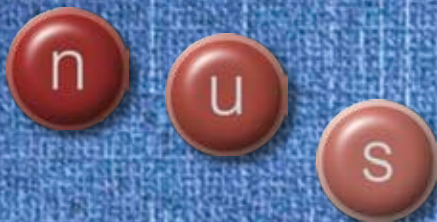


**n u s** extra  
promotion

£5.00 off your  
Freshers Ball ticket



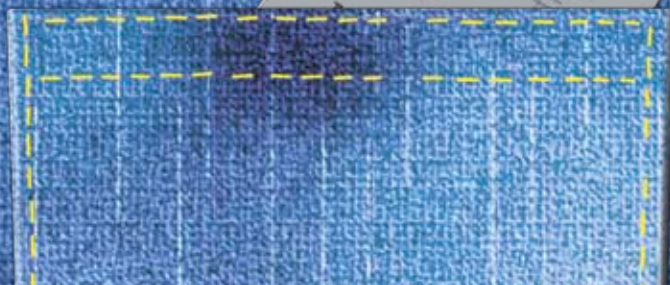
# NUS Registration and Membership



The National Union of Students (NUS) is an organisation representing over 750 Students' Unions and 6 million students within the UK, it is one of the largest student organisations in the world providing relevant campaigns, representation, training and research to students at Reading.

When you become a member of RUSU you join the NUS.

A lot **extra** for a lot less



# NUS Extra

When you come to Reading, you not only get to be part of one of the most vibrant and exciting Students' Unions in the country, but as RUSU is a constituent member of the National Union of Students (NUS), you can get your hands on either an NUS Extra Card or a NUS Democracy Card.

Carrying either card means that you are part of representation and democracy here. It means you can vote at election times, turn up to Campaigns Convention and access some RUSU events for free, but most importantly, it shows that RUSU is your Union.

NUS Extra gives you extra discounts, extra deals and extra opportunities. A big part of student life is being able to get stuff cheaper than everyone else! Packed with offers and vouchers designed to save you money and time.

**Go to**

[www.rusu.co.uk/extra](http://www.rusu.co.uk/extra)  
to find out more  
and to register





Enjoy discounts with all these...



TOPMAN

amazon.co.uk



get ethical  
what you buy matters

MEGABOWL  
where excitement sinks... every time



TOPSHOP

ticketmaster



clash  
the world's largest... here



...and more

# Register online

If you want to take advantage of NUS Extra card then you must order it online, through

[www.rusu.co.uk/extra](http://www.rusu.co.uk/extra)

If you sign-up before Freshers Week then the card will be ready during week one of term.

Or register online in 3Sixty on the following dates:

Monday 9th October 10am – 4pm

Tuesday 10th October 10am – 4pm

Wednesday 11th October 10am – 4pm

Thursday 12th October 10am – 4pm

Friday 13th October 10am – 2pm

Democracy cards are available from 3Sixty on the dates above.





# What we do

A Students' Union, eh? Just bars, gigs and drinking, right?

Well, if you want.

We run the bars so that you have a great time at University. We hope you do. As a bonus though, the money you spend on beer, music and sprits at RUSU goes straight back into some of the other things we do, so if you want to get involved in something then you've already helped pay for it! So, the more money you spend in the Students' Union means the more money can be spent on you.

What's even more exciting is that you get to decide where we spend those sandwich, beer and chocolate profits. Every year we have elections where you choose the majority of the Trustee Board, the people who set the strategic direction for the Union.

Amongst those trustees are six Sabbatical officers who combine their Trustee role with representing you full-time!

On top of all of that we have Campaigns Convention where you set the political, campaign and volunteer direction of the Students' Union. Everyone can come along, including those groups who represent about every section of the community here at Reading.

We were founded to fight for student representation, and although that continues to be the underlying principle of all of the work we do, we want to make sure that you can meet people just like you, that you get the support you need and that you have a Students' Union which remains student led and student focused.

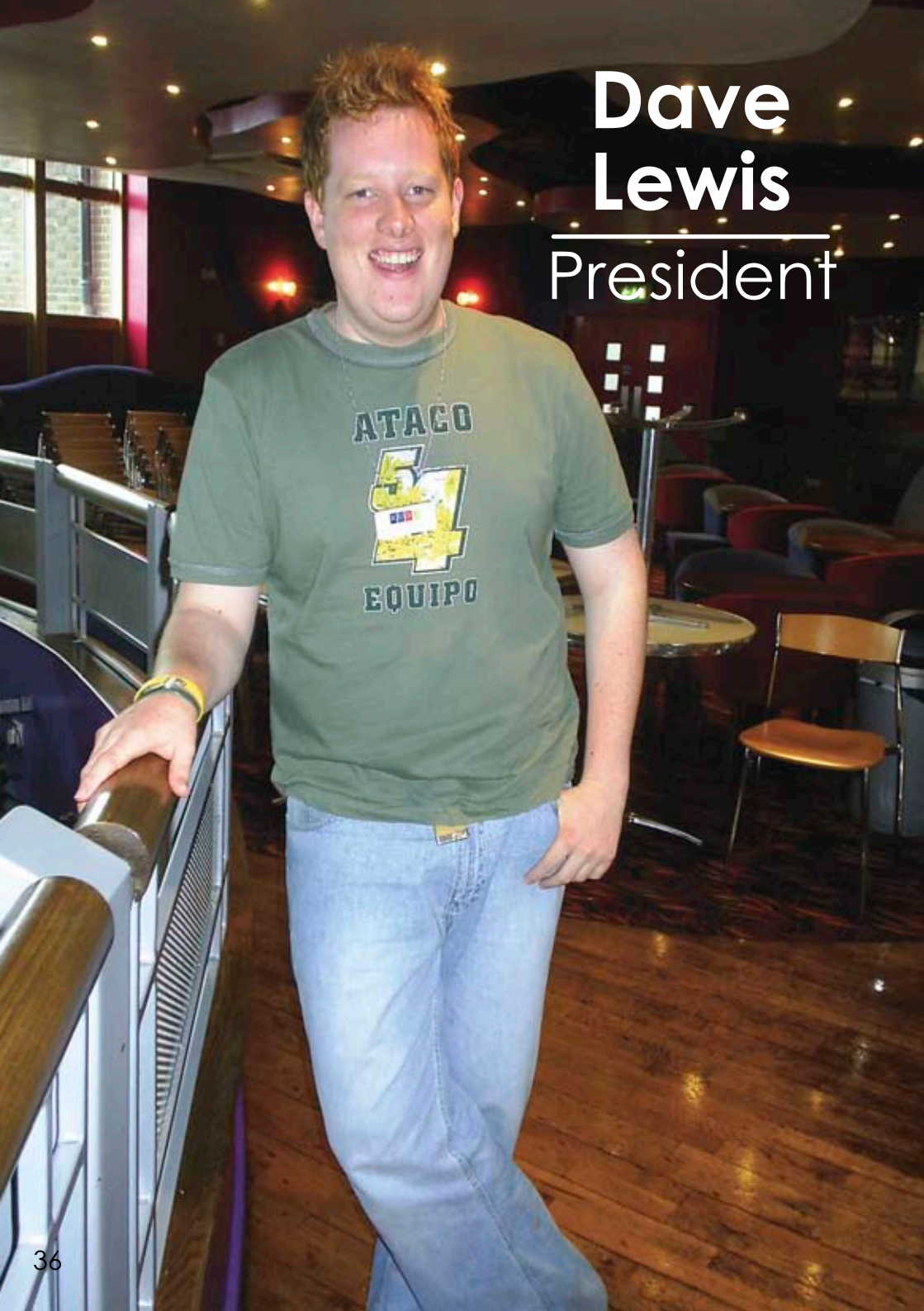




# Dave Lewis

---

## President





Hello and welcome to Reading University, I'm Dave and I'm your President for the forthcoming year. When you agreed to come to Reading University not only did you sign up to a fabulous academic course, but you became a member of one of the best Students' Unions in the country!

After studying for a Humanities degree for three years and being involved with JCRS for two years, I was elected President to be a face - not a name, to deliver effective communication to the membership and to fight on their behalf. One year on and I have become the third President to get re-elected in the Union's 80 years of history, continuing to fight, continuing to deliver and continuing to win for the membership.

## **'I make sure that the Union is fighting, delivering and winning for the membership – you!'**

As President I am responsible for the overall leadership and direction of the Union's activities. Whether this involves attending meetings on your behalf, chasing up the University, contacting the media and the NUS, putting Neighbours on at lunchtime or co-ordinating and delivering campaigns, I make sure that the Union is fighting, delivering and winning for the membership – you!

During your time here, don't just think of it in terms of what the Union can do for you, but what you can do for your Students' Union. This means getting involved in all aspects of Union life, from joining us on demonstrations and helping fight for campaigns, to being part of a sports club or a society, working as a member

of student-staff or just using the Union as the heart of your student life. If you want to make the Union bigger and better then get involved! Last February your peers voted for a new Governance structure, one which finally made clear where decisions are made, how to hold representatives to account and why students are at the heart of our organisation. There are plenty of chances for you to get involved at a level that you wish, so let us know your opinions, your issues and your questions. With your input and direction we can all make sure that the Union remains student led, student focused and student owned.

All of us are in a process of great change; your year ahead brings with it new experiences, new people and a new lifestyle. For me it will be a year of speaking to over 4,000 new students about what I and the Union do. Within your Union we will complete the £1.75 million Hub – our new volunteer, advice and activities centre, we will deliver an extensive and exciting entertainments calendar including a new site for the Annual Summer Ball, we will campaign for a better education in an era of variable fees, but most importantly the Union has the exciting prospect of changing, growing and adapting to you, your lifestyle and your needs.

We are on the eve of something big within the history of the Students' Union; the next chapter of our history will be shaped by the next twelve months so get involved, get active and have fun!

Have a great year, its going to be amazing!

**Dave Lewis**  
RUSU President  
d.c.lewis@rdg.ac.uk  
07973503401  
rusupresident.blogspot.com



## Mike Hance

### VP Equal Opportunities & Ethics

Hello and welcome to Reading, the University and the Union. I am Mike and I am your Vice-President Equal Opportunities and Ethics. I am here to make sure that the policies we have in this area is implemented and that no student suffers from discrimination, harassment or bullying of any kind.

I will be working with the Student Representative Groups to make sure everyone has a chance to fulfil their individual potential without the hurdles of prejudice. I will also be working with Student Liberation Groups to campaign on the inequalities that people still face today.

The areas of gender, sexual orientation, race, sex, gender identification, disability, marital or parental status, religion and belief, age or for any other reason are protected by our Equal Opportunities Policy. If you feel someone has broken this policy you should come and speak to myself or another sabbatical officer.

**‘my role entails me to encourage both the University and students to adopt a good ethical practice’**

The other part of my role is ensuring that students are informed about unethical practices that happen either on a local, national and international level, as well as making sure that the Union informs its students about unethical products. Finally my role entails me to encourage both the University and students to adopt a good ethical practice.

Please feel free to contact me I am available by phone, mail, fax and email or you can come to my office (Ask at RUSU reception for directions) I look forward in meeting many of you this coming year.

I have a great time at Reading University and most of all have a fantastic time at Reading and make sure you get involved.

Office number: 0118 378 4106  
Mobile: 0798 934 897  
Email: [m.w.hance@reading.ac.uk](mailto:m.w.hance@reading.ac.uk)





## Nick Smith

---

### VP Welfare

People say that University is the best time of your life and that may be true for most people most of the time, but it's not always the case. The role of the VP Welfare is to ensure that there is strong support for students, their lifestyles and that their needs are met. This includes all areas of health, safety and advice on welfare issues.

**‘The role of the VP Welfare is to ensure that there is strong support for students, their lifestyles and that their needs are met.’**

As the student representative on Welfare issues I'll spend much of the next year sitting on University meetings with the Counselling Service, Health Centre and Study Advisors among others. I also communicate with the police, campus security, MPs and others in the local community to push the student right for safety and well-being.

As well as meeting with the University, I'll also be working very closely with many student volunteers. The work of JCR welfare Reps and groups like Nightline are vital for the student body. I'll be working alongside them, supporting their campaigns and development with training and advice.

The student lifestyle is as important as ever for those on campus. With the cost of a degree higher than ever before and more students needing to get part time jobs, I'll be working with the other Sabbatical officers to make sure that fair support is given to those who need it and that the student voice is heard.

If you ever want to get in touch with me, have any campaigns you want to run or just want to know more you can find my details on the rusu website or below.

Best wishes for your time here!

n.a.smith@reading.ac.uk

07812 177703

<http://rusu-welfare.blogspot.com>



## Sam Hibbs

### VP Sports & Societies

I'm here to ensure that you get the best out of any club or society that you should decide to join.

We have a wide range of sports clubs, from the classic Football, Rugby and Hockey clubs, to the more unusual like Ultimate Frisbee, American Football and a surf club. Many of our sports team play very competitively in BUSA, the British Universities Sports Association, and local leagues. There are also social teams and intra-mural (Halls Vs Halls) tournaments run by the Sports Centre, which are held throughout the year.

There are also a large number of societies catering for all interests, from

Drama and Writing to Sci-Fi and Law. There are also course related societies, such as Agriculture, for extra bonding with course mates.

My role is to encourage students to get involved and participate in the wide range of activities that the union has to offer. I also develop the sports and societies so they work best for you.

If you have any questions or queries, or should you wish to create a sports club or society please visit me in my office upstairs in the student's union. Don't be afraid to come and find me any time of the day. You can email me on [s.hibbs@rdg.ac.uk](mailto:s.hibbs@rdg.ac.uk), telephone my office on 0118 378 4136 or on my mobile 07812 177715

Here at Reading you not only have the opportunity to develop existing interests but also the chance to try something new and meet people with similar hobbies. Every club and society will have a stall at the Fresher's Fayre.

Please come along, speak to the clubs and societies, sign up and get involved.

**'My role is to encourage students to get involved and participate in the wide range of activities that the union has to offer.'**





## Emily Beardsmore

---

### **VP Development**

As the Vice President Development, I am here to help make sure that you get the most out of anything voluntary related during your time in reading. Whether this is getting involved in writing an article for the student newspaper, raising money for charity, presenting a radio show or getting covered in baked beans for charity.

During your time here at Reading you have the opportunity to get involved in lots of volunteer groups, There is Spark, the student newspaper (pg 59), Junction11, the student radio Station (pg 60), Nightline, A listening and information service run for students by students (pg 55), Raise and Give Society (RAGS) Raising money for charity (pg 54), Campaigns forum, championing ethical issues (pg 58),

Web/Forum volunteers, helping to moderate our online community and helping clubs and societies build there own websites (pg 61). There is also Active in Reading (AIR) which is an opportunity to get involved in many different types of community volunteering from one off projects to ongoing projects. During my time at Reading I have spent lots of time involved in voluntary work and fully believe that it helped to turn being a student at Reading into such an amazing experience!

To support you through all off this and aid your future development so that your CV looks nice and shiny to future employers we run a training scheme called RU Ready (pg 56) which covers skills to help you in your volunteering and also to improve those key employability skills that employers want to see. We also run a unique accreditation scheme MASIV (pg 57) this enables you to get all your voluntary work acknowledged on you degree certificates.

It has been said the volunteers are the lifeblood of RUSU and I know this is true. So use your time here at Reading to get involved and do amazing things. If you have any questions about volunteering or can think of any other things you would like to get involved in then please come and see me or email me [e.f.beardsmore@reading.ac.uk](mailto:e.f.beardsmore@reading.ac.uk)



# Ryan Bird

---

## VP Education

Welcome to Reading University. Along with having a great time at university, everyone is here for an education and it's my role as Vice President Education to make sure this part of your university life is running smoothly, and that you get the best possible experience here at Reading.

A key part to university life is getting involved, and I would highly recommend taking up every opportunity whether this be a club, society or the course rep scheme to further enhance the skills you will gain from your studies. Course reps

are a vital part in the communication network of the university; it gives students the chance to feed back to staff on course issues. In recent years there has been an increased drive for students to have a larger role in the way their institution is run; through the course rep scheme you can be part of this representation – Please come and see me for more details.

With the introduction of variable fees this year, I will be working with the University making sure that Education is top of the agenda and that you are getting the quality teaching and learning services you have paid for.

**'I will be working with the University making sure that Education is top of the agenda'**

Should you have any concerns about the way your course is being delivered you can contact me or one of your course reps, and we will make sure your questions and voice is heard in the right places.

It is my job to support, represent and campaign for you, so please don't hesitate to contact me, there are number of ways you can do this: Pop along to my office, (ask at RUSU reception), email me [r.j.e.bird@reading.ac.uk](mailto:r.j.e.bird@reading.ac.uk) or chat to me when I am around on campus.



# Student Trustees

Your Students' Union is about to become a Charity regulated by the Charities Commission.

Each Charity has a Board of Trustees, of which ours is made up of Six Sabbatical officers, three Student Trustees and at least but no more than four external trustees.

The Trustee Board is responsible for the strategy and direction of the Students' Union, are responsible for the actions of the Union and set the overall policy of the Union. The President is Chair of the Trustee Board, they meet about seven times a year

Student Trustees get elected alongside Sabbatical officers in the February elections of each year, but whereas Sabbatical officers are full-time representatives, Student Trustees are elected to be Trustees of the Charity alongside their studies.

External Trustees are appointed through a selection process, and provide valuable experience and knowledge to the Union's strategic direction.

For 2006/7 our Student Trustees are

Pete Jeffreys  
Julia Horne  
Chris Hampson

Our External Trustees will be selected on the eve of Freshers' Week.



**BODY 'N' GLITZ**  
**0118 966 5606**

Above The Funky Barnet  
14 Wokingham Road, Reading RG6 1JG  
[Cemetery Junction]

**OPEN: 9-8 TUE, WED, THU**  
**9-7 FRI, 9-5 SAT.**

**THE**  
**Funky**  
**Barnet**

10% Student Discount - Unisex Salon  
Wella MCA colour specialist  
Highly recommended to students

**0118 926 9919**

14 Wokingham Road, Reading RG6 1JG  
[Cemetery Junction]

OPEN: 9-8 TUE-THUR, 9-7 FRI, 9-5 SAT  
[www.thefunkybarnet.co.uk](http://www.thefunkybarnet.co.uk)



## **Premier & Angel's School of Motoring**

**Established 1984**

Gift vouchers available - Theory Test preparation and support  
Intensive course specialists - Male & female instructors  
Competitive rates - Door to door service  
Open 7 days a week - 10% discount for students



**Excellent 1st time pass rates**

**Freephone 0800 0853009**



[www.premierangels.co.uk](http://www.premierangels.co.uk)



# Student Representation and Development





# LIBERATION

Get Involved. Get Active. Get Liberated

## RUSU's Liberation groups:

Black Students' Liberation Officer  
Black.Liberation@reading.ac.uk

Students With Disabilities (SWD)  
www.swdreading.org.uk

Lesbian, Gay, Bisexual and Trans  
www.readinglgbt.org

Women's Liberation Officer  
Women.Liberation@reading.ac.uk

# www.liberation.org.uk



BEST EVER

# COURSE REPS

Active  
Formula

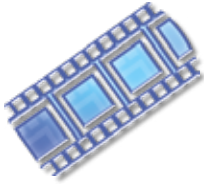
The course representative scheme is set up to help all students by giving you a voice in your department, school or faculty's operation. Course Reps are your first point of contact if you need any advice or are experiencing problems with your studies. If they can't help, they will be able to direct you to someone who can.

Every course or subject area, including postgraduates, should have at least one rep that you can go to with any concerns about your studies. It might be that you have timetable clashes or an issue with the assessment of a particular module. Your rep can take this to departmental meetings with staff and ensure your concerns are noted and improvements made. Become a Rep – We need you!

Course Reps are vital to both RUSU and the University, because the happier you are with your studies, the better. RUSU provides training and support to all Course Reps and reps are eligible to gain formal accreditation through the MASIV scheme (see elsewhere in this handbook for details).

For further details, contact the VP Education, Ryan Bird ([r.j.e.bird@reading.ac.uk](mailto:r.j.e.bird@reading.ac.uk)) or look for Course Rep posters and elections in your department, school or faculty.

# Societies at RUSU



The Societies Office at Reading University Students' Union is run by Vice President Sports and Societies Sam Hibbs and the Membership Services staff. RUSU offers over 55 different societies. You will get to see them all at the Freshers Fayre on Thursday 5th October or alternatively check out their mini sites on [www.rusu.co.uk](http://www.rusu.co.uk)

Societies run their events all throughout the week in different locations around the University. Societies offer something for everybody and I am sure you will come face to face with something you have never heard of before but are interested in to get your hands dirty and have a go.

Joining our societies is easy and we suggest that you do as much as you can, try new things and get to know a whole new bunch of people with similar hobbies to yourself. If you need any help in finding a society that is for you or maybe even starting up a society yourself, then see the Vice President for Sports and Societies upstairs on the Union or visit the Membership Services Centre for more information.

Good luck in all your activities here at the University. I'm sure we shall see you around or in the bar!

**Sam Hibbs**  
VP Sports and Societies





Afro-Caribbean  
Agriculture  
Aisec  
Amnesty International  
Anime  
Archaeology  
Armed Forces  
Asian  
Audio-Visual  
Bio-Science  
Botanika  
Brazilian & Portugese  
Business  
Campaigns Forum  
Chinese Students &  
Scholars Association  
Circus Skills  
Commuters Network  
Conservative Society  
Debate  
Drama  
Duke of Edinburgh  
Electronic Music  
Entrepreneur  
ERASMUS  
Fairtrade  
French  
Games & Role Playing  
Society  
Hellenic Society  
Indie  
Italian  
Jewish  
Latin American & Spanish  
Law  
Liberal Democrats  
Memory  
Millennium Volunteers  
Motorbike  
Music  
Muslim  
Philosophy  
Photographic  
Poker  
Pyschology  
Reading LAN  
Rock  
Sci-Fi, Fantasy & Horror  
Scouts & Guides  
Socialist Student  
St. John Ambulance  
Student Bands & Live Music  
Thai  
Wine Appreciation  
Writers  
Young Green

# Sports at RUSU

The Sports Office at Reading University Students' Union is run by the Vice President Sports and Societies Sam Hibbs and the Membership Services staff.

Sport is perhaps the most busy area of Students' Union life with over 40 different types of clubs to join and with over 36 actual playing teams in the BUSA (British Universities Sports Association) Leagues. You will get to see them all at the Freshers Fayre on Wednesday 4th October or alternatively you can check out their mini sites on [www.rusu.co.uk](http://www.rusu.co.uk)

Training is run by each of the clubs throughout the week, with competitive games taking place on Wednesday afternoons where the fields, squash courts and sports hall come to life with you fellow students playing to represent their team, team mates, University and your Students' Union.

Not only will you work hard playing for your team competitively or even just as a beginner you

will play hard too with great social events put on by both the clubs and RUSU; events such as paint balling, 'Extra Time', general socialising and the extremely popular Sports Federation Ball.

Joining these clubs is easy and we suggest that you do as much as you can to enjoy your sport, try new sports and get to know a whole bunch of new people with similar hobbies to yourself. If you need help finding a club or maybe even starting up a club we don't have, then see the Vice President Sports and Societies upstairs in the union or visit the Membership Services Centre for more information.

Good luck in all your sporting activities here at the University. I'm sure I shall see you around, on the field or at the bars!

Up the 'Ding'!

**Sam Hibbs**  
VP Sports and Societies





Aikido  
American Football  
Archery  
Athletics  
Badminton  
Basketball Men's &  
Women's  
Boat Club (Rowing)  
Breakdance  
Canoe Club  
Caving  
Cheerleaders  
Clay Pigeon  
Cricket  
Dance  
Fencing  
Floorball  
Football Men's & Women's  
Golf  
Hockey Men's, Women's &  
Mixed  
In-Line Hockey  
Jitsu  
Judo  
Karate K  
Karate S  
Kickboxing  
Korfball  
Kung Fu  
Mountaineering  
Netball  
Polo  
Riding  
Rugby Men's & Women's  
Sailing  
Skydiving  
Squash  
Snowsports  
Sub Aqua  
Surf  
SWD Sports  
Tennis  
Trampolining  
Ultimate Frisbee  
Volleyball

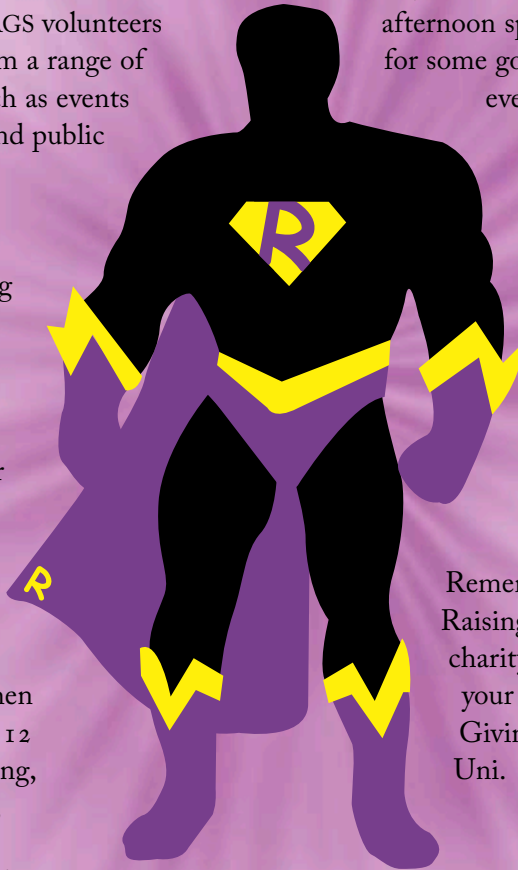


# RAGS

Raising and Giving Society

RAGS Dedicated to fundraising for various charities, the Raise and Give Society hold fun events throughout the year, and organise the annual RAGS week. RAGS volunteers can benefit from a range of experiences such as events management and public relations work.

RAGS is about students finding ingenious, fun and often completely absurd ways to raise money for charity. At the start of each year we pick six worthy charities and then spend the next 12 months skydiving, bucket rattling, pantomiming, battling in bands, raffling, running and generally raising in whatever ways we (and you) can!



Being part of RAGS is an exciting and unique side to University life.

Everything we do is designed to be fun, and when your night out or afternoon sports can raise money for some good causes, it all feels even better.

That's why we want you to get involved in whatever way you can - shaking buckets, treading boards or screaming at 10,000 feet - just come and find us. Or join us at Fresher's Fayre.

Remember, RAGS isn't just Raising and Giving for charity, its about Raising your expectations and Giving you a great time at Uni.

[rag@reading.ac.uk](mailto:rag@reading.ac.uk)  
[www.rusu.co.uk/rag](http://www.rusu.co.uk/rag)

**Julia Horne**

# Nightline

Nightline, a confidential information and listening service run by students, for students. Nightline operates between 7pm and 7am, Monday - Friday, during term-time. Comprehensive training is provided for Nightline Volunteers who are asked to do a minimum of 3 nights a term.

We're here to provide support to students who may be having an essay crisis, relationship problems, troubles at home, or be feeling lonely, isolated or depressed.

We also have an extensive collection of information from taxi, restaurant and pharmacy numbers, to the opening times and events on at the Union. If you have no credit Nightline can phone you back.

0118 9210711  
[www.rdg.ac.uk/NL](http://www.rdg.ac.uk/NL)



If you would like to volunteer for Nightline we offer comprehensive training; covering listening skills, empathy and knowledge of a range of subject areas. If you are interested in training please contact [nightline@rdg.ac.uk](mailto:nightline@rdg.ac.uk)

Being part of Nightline can be very rewarding; taking challenging calls and meeting some fantastic people dedicated to supporting their fellow students. Being on the committee offers an opportunity to gain some really useful skills.

When you arrive at Reading why not programme the number 0118 9210711 into your mobile. To get involved or find out more about the service visit [www.rdg.ac.uk/NL](http://www.rdg.ac.uk/NL).

## RU Ready?

RU Ready training is a student run training scheme. The scheme uses a mixture of online handbooks and 'live' sessions to train your groups in essential skills from public speaking to running events. This year for the first time the sessions will cover some key employability skills such as team working, problem solving and time management.



The sessions are led by students who have gone on specialised NUS training. We think that peer leadership is the best way to develop out union activities – development by students, to student and for students.

Each session is highly interactive and will involve games, toys and group work. There are also downloadable guides online at [www.rusu.co.uk/nslp](http://www.rusu.co.uk/nslp) for many of the training sessions we offer. See the website or contact [volunteer@rdg.ac.uk](mailto:volunteer@rdg.ac.uk) for details and to book places. In the first term we will be running sessions on Treasurer Training, Event Management and Promotion plus many more.

RU Ready to be a part of something big?

## Active in Reading

If you want to do some voluntary work then come and get some air!

Air (Active in Reading) has hundreds of volunteering opportunities to offer both within the University and out in the local community. Whether you are interested in one-off projects or regular voluntary work, we have the details for you.

With activities ranging from newsreading to bereavement counselling, fundraising to respite care, mentoring to coaching sports, there really is something for everyone.

Please email [air@rdg.ac.uk](mailto:air@rdg.ac.uk) or [volunteer@rdg.ac.uk](mailto:volunteer@rdg.ac.uk) and we will arrange to meet you to discuss your needs and interests and match you with the best opportunity for you.





# M.A.S.I.V.

If you volunteer on a regular basis, then you are eligible to apply to join the Modular Accreditation for Students Involved in Volunteering scheme. This joint scheme between RUSU and the University recognises the voluntary work of students by providing formal accreditation on your degree transcript (or by certificate for Foundation and Postgraduate students).

In order to get accredited, you will need to complete a short module that involves planning, showing evidence and evaluating your voluntary activities. You will get a handbook and clear induction and guidance from RUSU along the way.

You can get onto the scheme if you:

- Have a role on the committee of a RUSU Sports club or Society
- Volunteer in a shop or charity in the local community or through AIR (Active in Reading)
- Have a role on the committee of a RUSU Liberation Group
- Are involved in any kind of voluntary work for Spark or Junction11, RAGS or Nightline
- Are a Course Rep

We think that our volunteers do amazing things, so it is our way of saying well done and thanks!

For more information contact Emily (e.f.beardsmore@rdg.ac.uk) or the MASIV Module Convenor, Sue (volunteer@rdg.ac.uk).

# Campaigns Convention

Getting involved with your union couldn't be easier.

Campaigns Convention discusses the democratic, participation and campaigns aspects of the Union. The session is open to anyone and will happen at least twice a term. Everyone who represents a group, has an interest in the Union's activities and has an opinion on issue needs to go along. Every member of the Union can take part in the meeting, and there will be discussions on things from the ethics of Coca-Cola and the University, to questions with politicians, to debates on University accommodation and the Union's policy on Fair-Trade. If you care about anything that happens to you as a student while at Reading Uni, this is the place to talk about your views.

Gemma Tumelty, NUS National President, will be attending our inaugural Convention on Thursday of week one – 12th October.

## Managed Services Forum

Managed Services Forum is the place for any student to go and ask questions about the way the Union is run. Whether it be from wanting to ask, in a public forum, about jugs of Snakey-B to the amount of advisors in Membership Services, this is the new place to do it. Your elected representatives will still answer your questions, but this new opportunity gives you the chance to feedback on the service aspects of the Union.

On Tuesday week three – 24th October, there will be a Freshers' Week Review special.

# Spark\*

Independent Student Weekly Since 1934

Spark is the Students' Union's independent newspaper, dedicated to providing students with an opportunity to expand their knowledge of the print media, provide information about the goings on at the Union, cover wider news topics of importance to students and entertain the student body.

The newspaper tradition at RUSU is now over 70 years old, with The Shell in 1934 beginning the trend of independent, fair and thorough journalism, which continues to this very day.

Spark is published every fortnight. Volunteers work purely for the sense of reward it offers and the experience of running a paper to strict deadlines in a professional manner; skills vital in any field, not just media. Spark is always looking for enthusiastic and committed volunteers for editorial, journalistic or photographic roles, so if you are looking to spend some of your time at University building the perfect foundation for a career while having great fun, drop us a line.

For those not working on Spark, the paper is still a vital link between students and the Union, keeping students informed about what the Exec are up to, what's coming up in the evenings and what big events are planned in the future. Spark is filled with film, book and music reviews, opinion pieces on everything from music piracy to gardening, and the latest sports news, in the Union, locally and nationally.

If you're interested in becoming involved with Spark then either visit the stall at Freshers' Fayre, drop the editor an email at [editor.spark@rdg.ac.uk](mailto:editor.spark@rdg.ac.uk), or pop into the office, next to the Exec offices, upstairs in the Union.

So if you need a television guide for the week or want something to talk about, pick up your free copy of Spark every other Friday of term.





# JUNCTION 11

Junction11 is RUSU's radio station, broadcasting through term time on, and around, campus.

Whether it's presenting a show, being a member of the news team, helping shape the playlist, delivering IT support or just listening, there are plenty of opportunities to get involved!

From the spring term we will be broadcasting out of the new Media Suite within the Volunteers centre, providing our first ever purpose built permanent studio! It's an exciting time to be part of the Junction11 team, and we want you to be part of it.

Volunteering for Junction11 gives you skills and experiences relevant for all sorts of careers. It's a great chance to make some friends and learning something new, it doesn't necessarily mean you go into the radio industry like many of our Junction11 alumni.

If you want to get ahead in the radio industry, have a passion for music, or if you've got the perfect face for radio, go along and have a chat at Freshers' Fayre or email [junction11@1287am.com](mailto:junction11@1287am.com).

Even if you don't think you're interested in becoming involved yourself, tune into the news, music and opinion shows on 1287am or listen over the web @ [www.1287am.com](http://www.1287am.com).

The Union is not just committed to music; it's committed to your music.

If you love music, you will love Junction11.





# Website

Your Union isn't simply this handbook, some Sabbatical officers or a newspaper, it's the centre of student activity on campus!

There are so many things going on, so many opportunities and so much news that our website is much more than just a shop window for the offers and events at the Union.

[www.rusu.co.uk](http://www.rusu.co.uk)



# Welcome to The Hub!

Coming soon will be the new place, designed for all students at Reading, where you will be able to connect to a whole range of support, services and activities.

When you first come into the Hub, you will be greeted at the Hub i which is the help desk where you can ask about anything affecting you, or anything you might be interested in, as a student.

If you wish you can arrange to speak privately with one of our Student Advisors on issues such as finance, accommodation, immigration, academic matters or personal concerns.

The Hub is the new focal point for student volunteering and you can ask about opportunities, recognition of your volunteering efforts or joining existing student groups.

The Media Centre has been built to house the vibrant and exciting Junction 11 and Spark. They will have their own modern space which is now much more accessible to all students at Reading.

The Hub is also the place to come if you have an interest in any sport or other organised pastime. You can join a sport club or society, receive advice on setting one up or guidance in any aspect of running any type of club.

## You will always be welcome at the Hub







# STUDENT advice

Our trained advisors can offer information, advice and guidance in a range of areas including: money and financial hardship, immigration and visas, health and housing, as well as help with academic and personal issues.

The service is free and confidential (all our advisors work to a written code of practice) and is available to all students.

Based in the Membership Services Centre, the advice service operates on a first come first served drop-in basis, although you can make an appointment in advance if you prefer.

Call in Monday to Friday, between 9am and 6pm, or phone 0118 3784108.

Student advisors are also available to talk to in the Students' Union office at Bulmershe on Mondays and Thursdays 10am to 2pm during term time.

For more information visit our website at [www.rusu.co.uk/student/studentadvice](http://www.rusu.co.uk/student/studentadvice)



# NURSERY

A purpose-built Nursery established since 1999

We are OFSTED registered.

The Nursery operates four separate age grouped rooms.

Opening 40 weeks of the year, based around a 30-week academic calendar.

Opening from 8.30am to 6pm during term time, with an optional breakfast club from 8am.

Parents can book places according to their timetable or work demands.

The Nursery offers a very energetic and vibrant environment giving priority to developing Personal and Social development.

Activities ranging from painting, story telling in dual languages, dance, drama and music, outdoor play and make believe are just some of the ways in which we promote overall development as a foundation to learning.

For more information and to visit the Nursery contact the Nursery Manager on 0118 378 4128 or email [m.a.key@reading.ac.uk](mailto:m.a.key@reading.ac.uk)





# Dates for your diary

## Freshers Week

Wednesday 4th, Thursday 5th & Friday 6th Oct,  
Freshers Fayre

## Week One

Monday 9th to Friday 13th Oct – Pick up pre-ordered  
NUS Extra cards or Apply for one

Thursday 12th Oct – Campaigns Convention

## Week Two

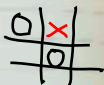
South-East Weighting Campaign

## Week Three

Thursday 24th Oct – Managed Services Forum

Sunday 29th Oct – National Demo

RUSU



## Week Four

Course Rep Training

## Week Five

Extenuating Circumstance Campaign

Money Talks

## Week Six

Thursday 16th Nov – AGM & Campaigns Convention

Friday 18th Nov – RAG Raid

Week Seven onwards and more on [www.rusu.co.uk](http://www.rusu.co.uk)!



# Ad

# Night Bus

A free service, funded by your Union, allowing you to get home safely.

Now in its twentieth year, the Night Bus runs every hour from early evening, picking up and dropping off from the Students' Union at Whiteknights, outside Breeze Bar at Bulmershe, the main entrance to Sibly Hall and your home or hall.

It's a service we continue to be proud to run, and because space is a premium, priority goes to disabled students and then lone students.

This valuable and unique service runs every day during term time, except Sundays, until fifteen minutes after the last bar on Whiteknights closes.

Make sure you use this service, with waiting by the Nursery on Whiteknights campus, to get home safely.



# Useful Numbers



Alcoholics Anonymous 0118 959 7494  
Consumer Advice Centre 0118 939 0976  
Council Tax 0118 939 0656  
Citizens Advice Bureau 0118 959 8059  
Family Planning 0118 986 4621  
Florey Unit (sexual health) 0118 987 7216  
Be You (Gay and Lesbian) Helpline 0118 959 7269  
Housing Advice Service 0118 939 0089  
National Rail Enquiries 08457 48 49 50  
NHS Direct 0845 4647  
Nightline 0118 9210711  
No5 Counselling Service 0118 901 5668  
Reading Buses (The Travel Shop) 0118 959 4000  
Reading Tourist Information Centre 0118 956 6226  
Royal Berkshire Hospital (A&E) 0118 987 5111  
Royal Berkshire Hospital Overnight Crisis Service  
Freefone 0800 783 9505  
Samaritans 08457 90 90 90  
Terrence Higgins Trust (AIDS/HIV) 0845 1221 200  
Thames Valley Police 0118 953 6000  
Traveline 0870 608 2608  
Women's Information Centre 0118 931 1939  
Dental Centre 0118 931 8649  
National Drugs Helpline 0800 776600



# NUS dem (incomplete)



**NOW  
OPEN**

# IBIS HOTEL READING CENTRE

TO BOOK, PLEASE CALL  
**0118 953 3500**



YOU'LL NEVER WANT TO STAY ANYWHERE ELSE

## READING Centre

Weekdays:

**£59.95**

Weekends:  
**£44.95**

Tariff per room per night for 1 or 2 people, valid from 01/09/06 to 31/12/06. Prices shown are subject to change. Event rates may apply.

- Reception 24/7
- Hot food 24/7
- Bar service 24/7
- Breakfast from 4am to noon
- Wifi internet access

***ibishotel.com***