



公司简介

上海苗浦电机有限公司是专业生产直流电机、交流变频和永磁变频及控制系统的专业企业，在中小型电机行业中享有较高的知名度。

公司前身是成立于1997年的上海南洋电机三厂（上海南洋电机厂电机制造分厂）。2004年转制为上海苗浦电机有限公司。2009年获得ISO9001:2000版质量管理体系认证证书。2010年成立昆山分公司，为日本东洋电机制造株式会社配套生产空压机用变频电机。

公司主要产品有：Z4系列直流电机、ZZJ系列冶金用直流电机、Z2系列直流电机；YSG系列交流变频调速辊道电机、YTSP系列变频调速异步电机；MPPM系列变频调速永磁同步电机以及MPCA系列控制柜。产品涉及四个大类、十几个系列，广泛应用于冶金、矿山、钢铁、港口机械、起重运输机械、橡塑机械、造纸等行业。

公司坚持“追求用户满意，树立一流品牌”，秉承南洋电机厂“锐意进取，争创一流”的精神。以振兴民族工业和推动经济发展为己任，以市场需求和客户满意度为准绳，以高新技术和现代化管理为手段，以“中国装备、装备中国”为目标，竭诚为广大新老客户提供优质的产品和服务。



Company Introduction

•SHANGHAI MIAOPU ELECTRICAL MACHINERY CO., LTD. is an enterprise with long history in manufacturing small and medium-sized AC & DC motors in China.

•The company has been transferred to private enterprise since 2004 from NANYANG ELECTRIC MACHINE No.3 WORKS founded in 1997. In 2009, it obtained the qualified certificate of ISO9001:2000 Quality Management System. In 2010, KUNSHAN BRANCH was established and began to produce OEM air compressor inverter-fed motors for TOYO DENKI SEIZO K.K.

•Main products of our company are: Series Z4 DC motors, Series ZZJ DC motors for mill auxiliary, Series Z2 DC motors, Series YSG inverter-fed induction motors for roller table, Series YTSP inverter-fed induction motors, Series MPPM inverter-fed permanent magnet synchronous motors and Series MPCA controllers, etc. Widely used in metallurgy, mining, steel, port machinery, hoisting and conveying machinery, rubber and plastic, paper and other industries.

•“Customer Satisfaction” is the spirit, “High-tech & Modern management” is the weapon, “First-class brand” is the goal. Our mission is to provide high quality products & good services to you.



主要产品

直流电机

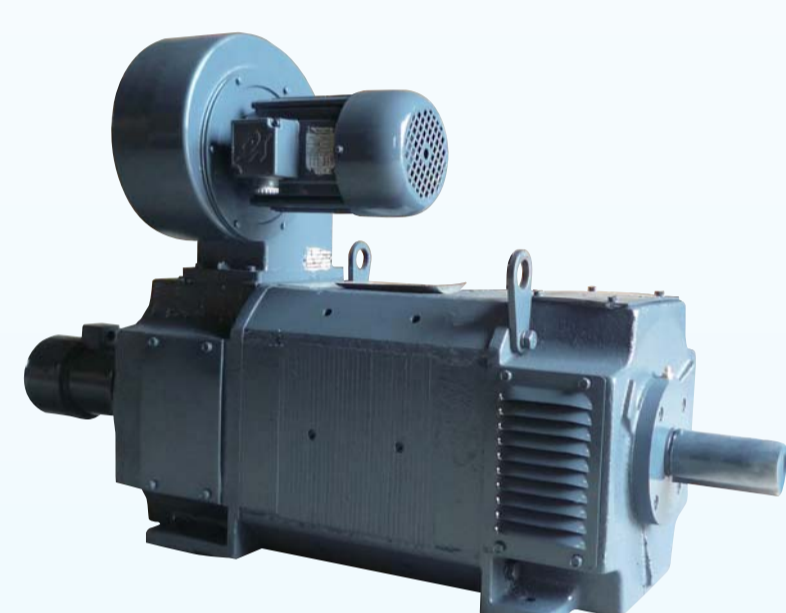
Z2 系列直流电机
一般产业用
0.4kW ~ 200kW



ZZJ 系列直流电机
冶金起重用
3.75kW ~ 186kW



Z4 系列直流电机
各类机械传动用
1.4kW ~ 550kW



交流异步电机

YTSP 系列通用
交流变频异步机
1.1kW ~ 355kW

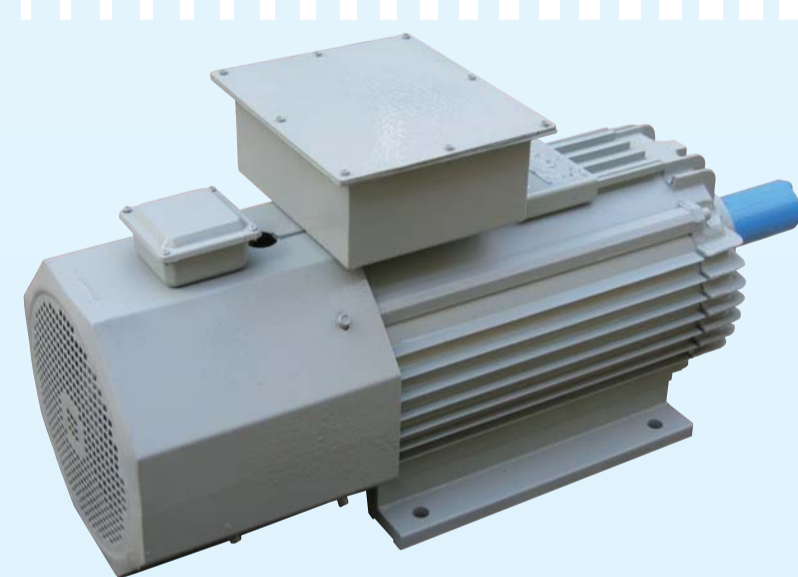


YSG 系列辊道用
交流变频异步机
0.3kW ~ 72.8kW



永磁同步电机

MPPM 系列产业用
交流永磁同步机
18.5kW ~ 110kW



变频控制系统

MPCA 系列通用
IPM 变频控件柜
4018 ~ 4110



Main Products

DC Motors

Series Z2 DC motors is used for industry. It also can be used for metal cutting machine tool, paper making, print, textile, cement-making, etc.

Series ZZJ DC motors are a kind of DC motors used for metallurgy & hoisting, available for steel rolling machine, crane, elevator and electric excavator etc.

Series Z4 DC motors are found wide use for prime mover in various, such as mill auxiliary in metallurgical industry, metal cutting machine-tool, paper making, print, textile, printing and dyeing, cement-making, plastic extruding machine, etc.

AC Motors

Series YTSP VVVF induction motors are specially designed for matching various IGBT pulse-width modulation frequency converters of high performance.

Series YSG VVVF induction motors for roller tables are developed products in metallurgical industry. It possesses the advantages of small volume, wide speed range, reliable operation, easy maintenance, etc.

IPM Motors

Series interior permanent magnet synchronous motors (IPM) are the economical and ecological drive system that realize ultra-high efficiency.

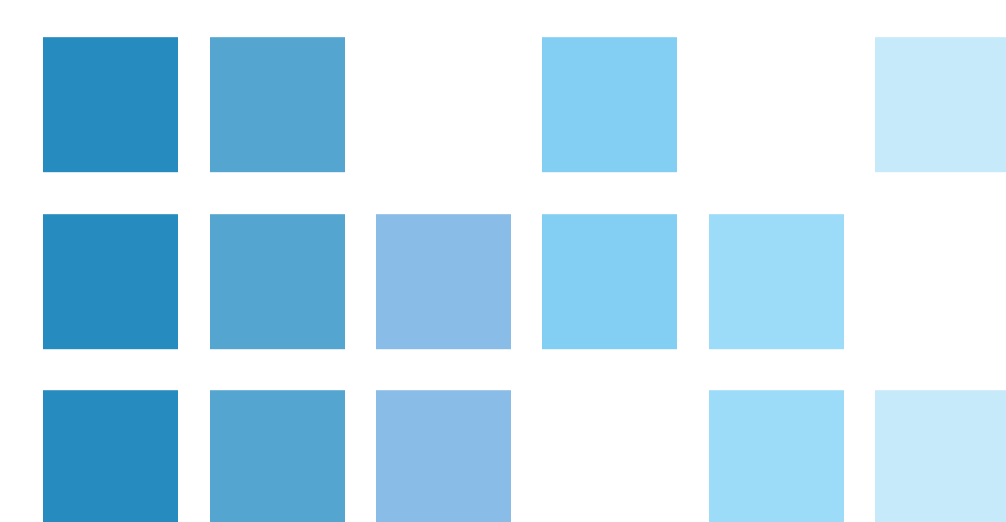
IPM Controllers

Series MPCA controllers are newly developed projects, using d-q vector control techniques for IPM motors, and also can be used for induction motors, the cores are made in Japan.



MPPM内置式永磁同步电动机

MPPM Interior Permanent Magnet Synchronous Motor(IPM)

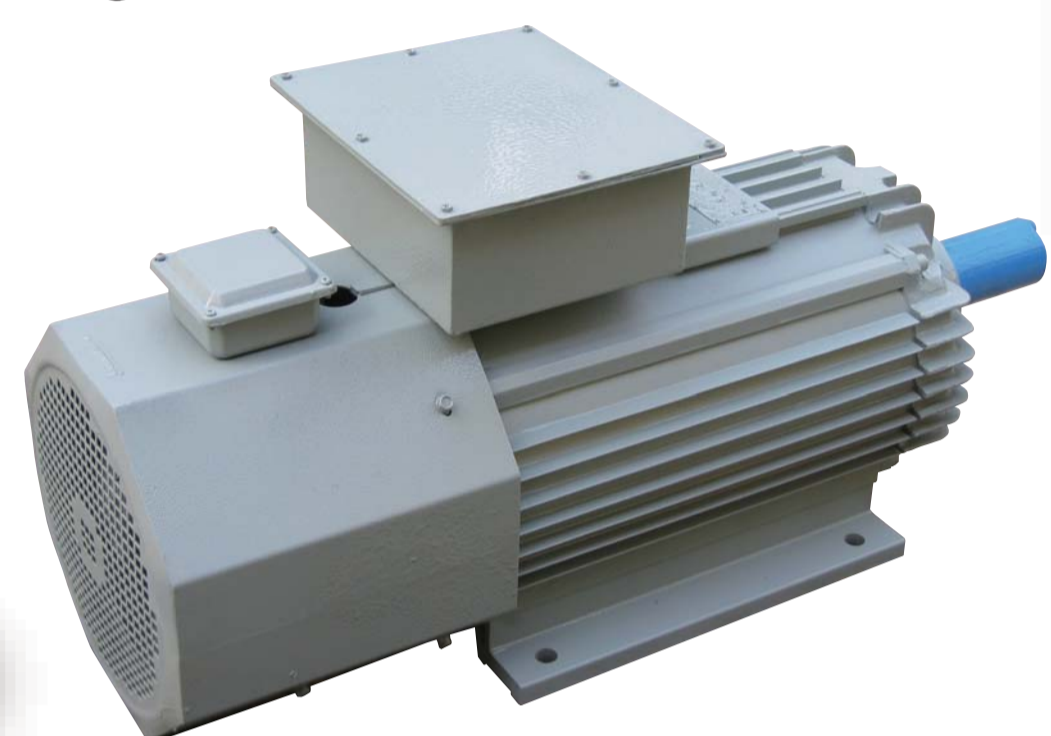


体积小重量轻 Small Size & Light Weight

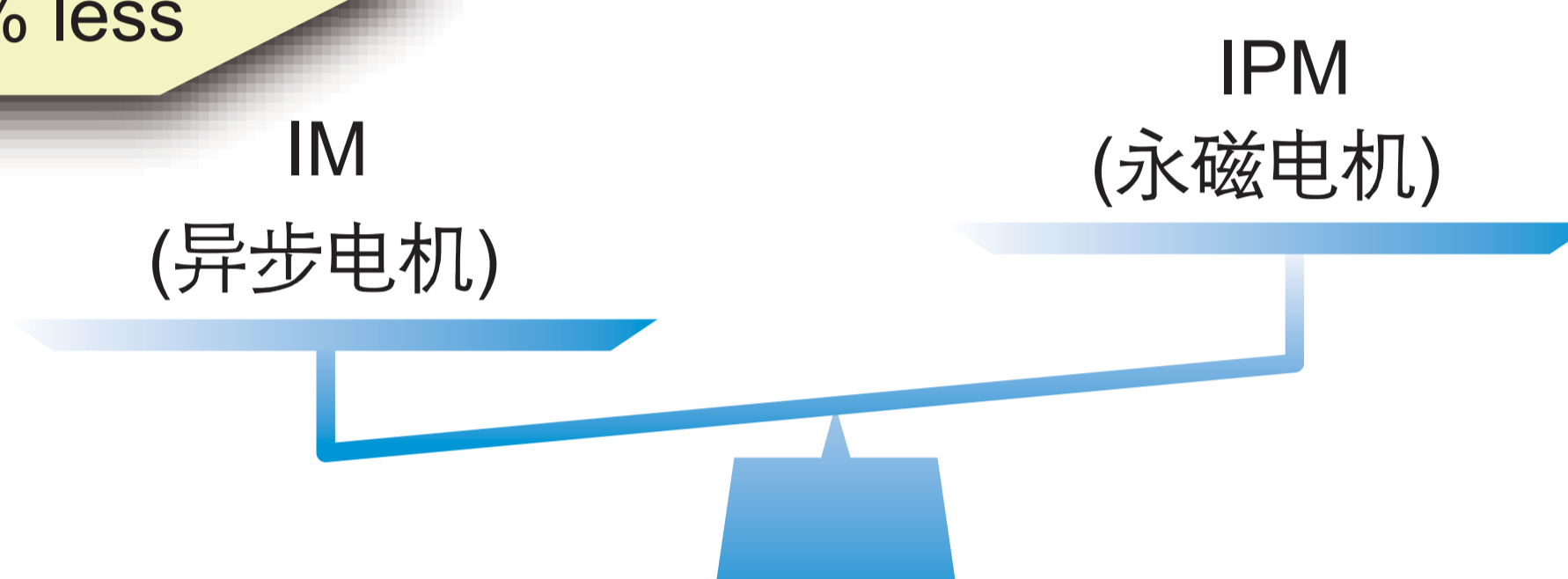
采用高效钕铁硼永磁体，电机体积减小重量减轻。
Small size and light in weight by using high performance NdFeB permanent magnet material.

以 110kW 1800rpm 为例
Example of 110kW, 1800rpm

体积缩小54%
Volume ratio: 54% less



重量减轻56%
Weight ratio: 56% less



损耗少效率高 Low Loss & High Efficiency

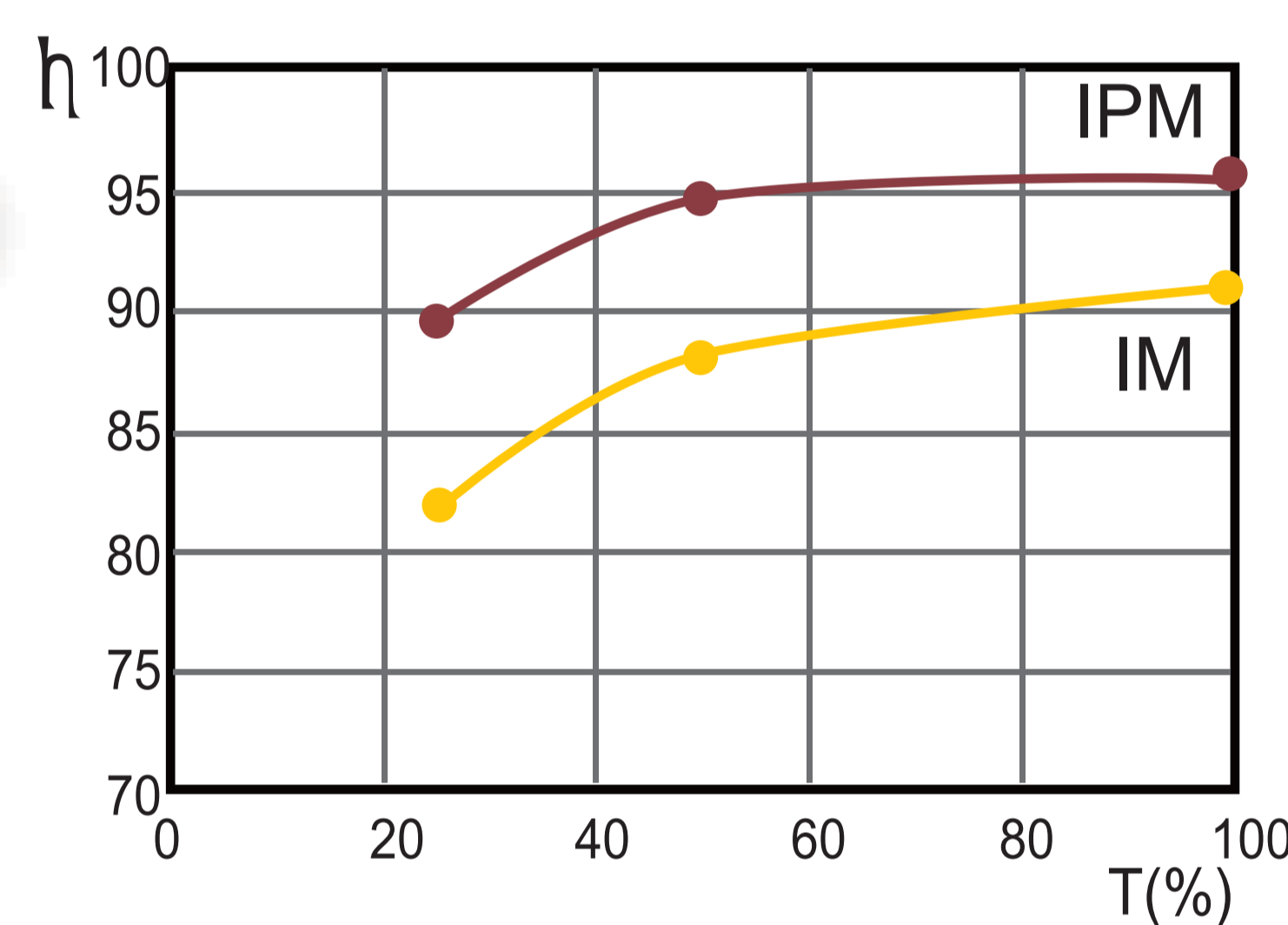
无二次侧绕组，转子损耗接近“零”，电机效率提高。
High efficiency due to no 2ndary winding, the loss of rotor is nearly "Zero".

损耗减少41%
Loss ratio: 41% less

IM 损耗
IM Loss
IPM 损耗
IPM Loss



效率提高3%
Efficiency ratio: 3% up



电力省节能优 Energy Saving Drastically

电机效率和功率因素高，节省电力且节能显著。Energy can be saved drastically because of high efficiency and power factor.

耗能低

1

1级

每年节能2.8万元
Energy Saving RMB28,000



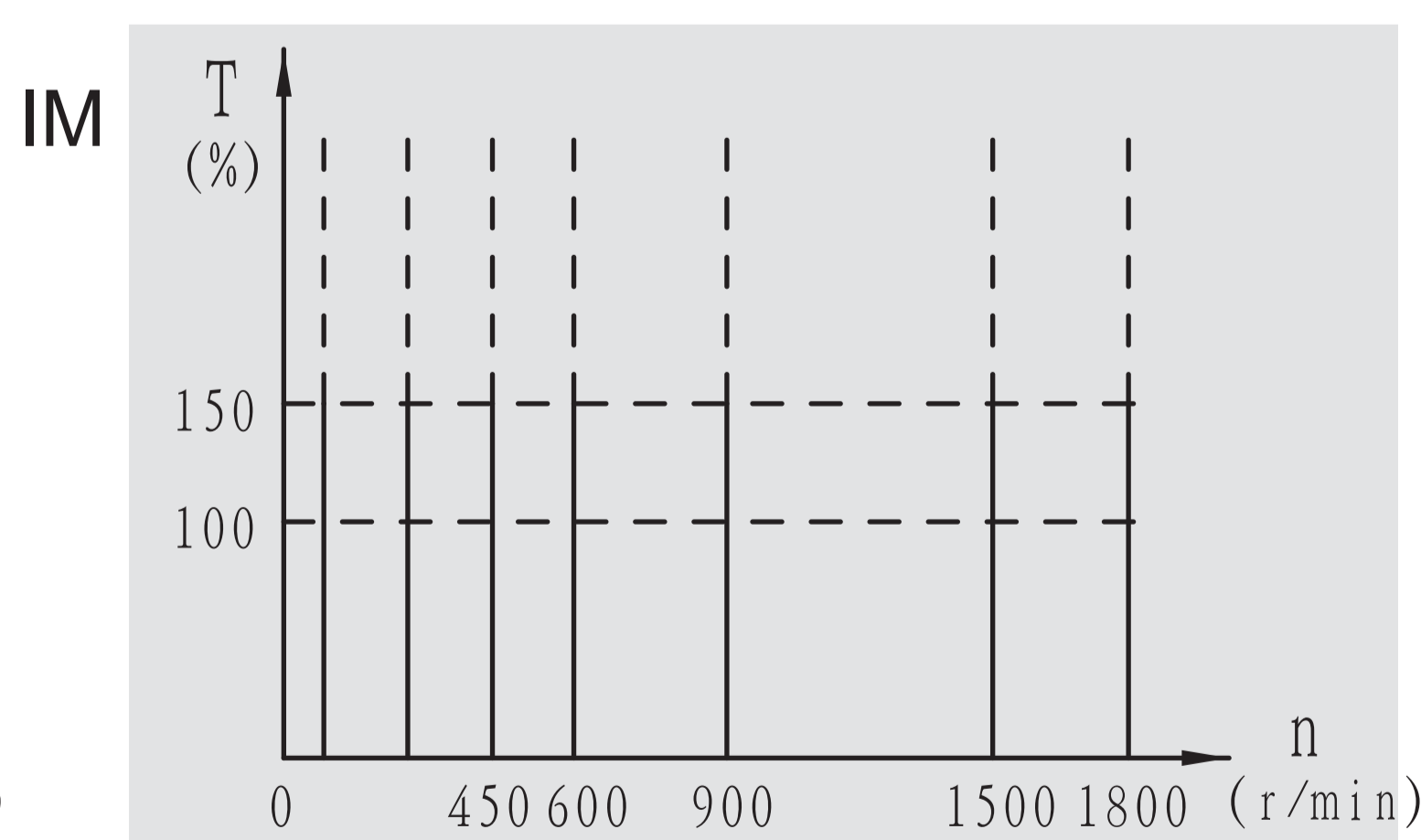
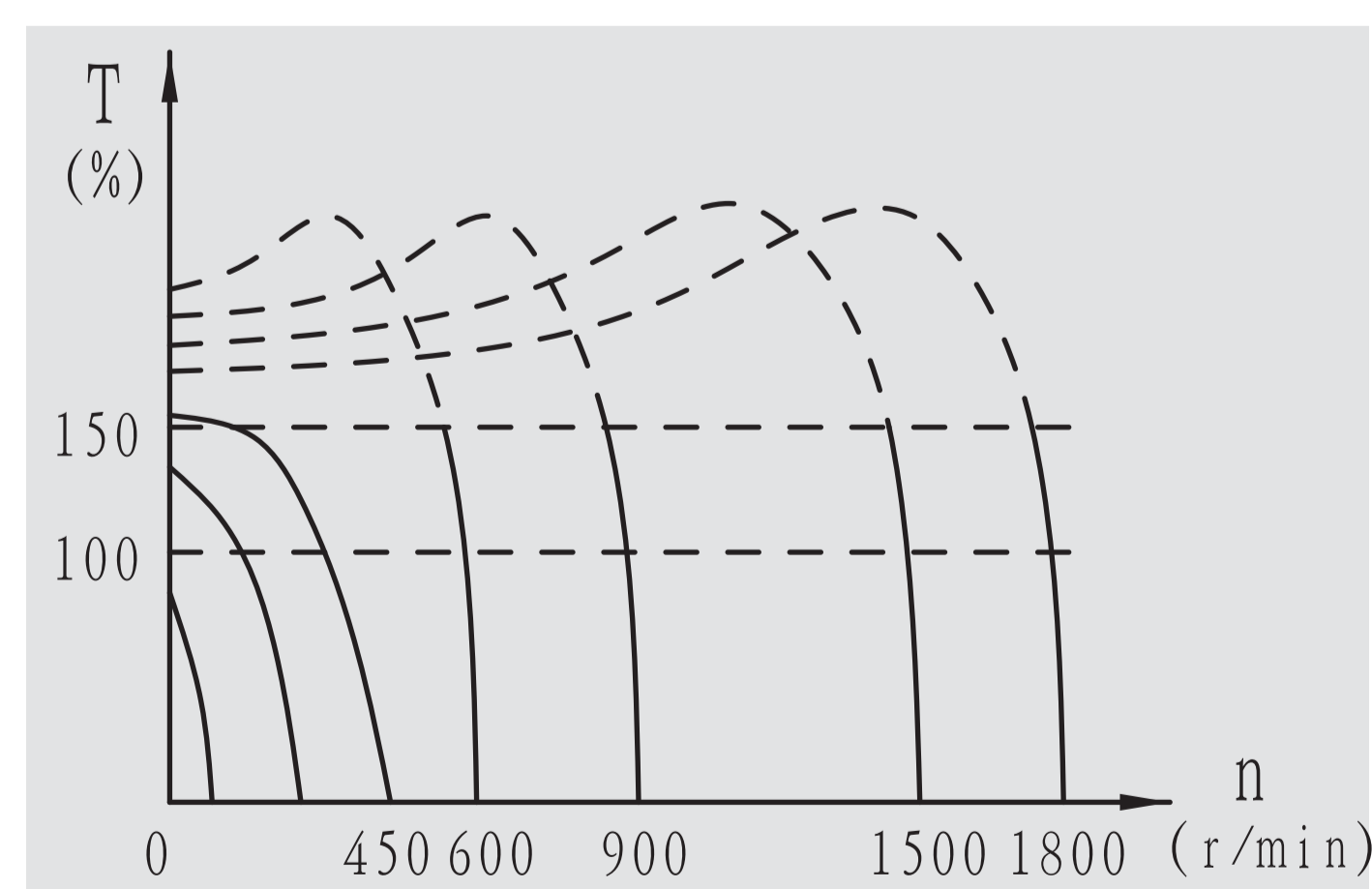
耗能高

3

节电金额 = 节省功率(千瓦)×运行时间(小时)×电力单价(元/千瓦时)
Energy Saving = Reduce Loss × Running Time × Power Unit
年节电金额 = (7.81-4.62)*24*365*1.00 = 27,944.40 元

特性硬调速准 Remarkable Speed Accuracy

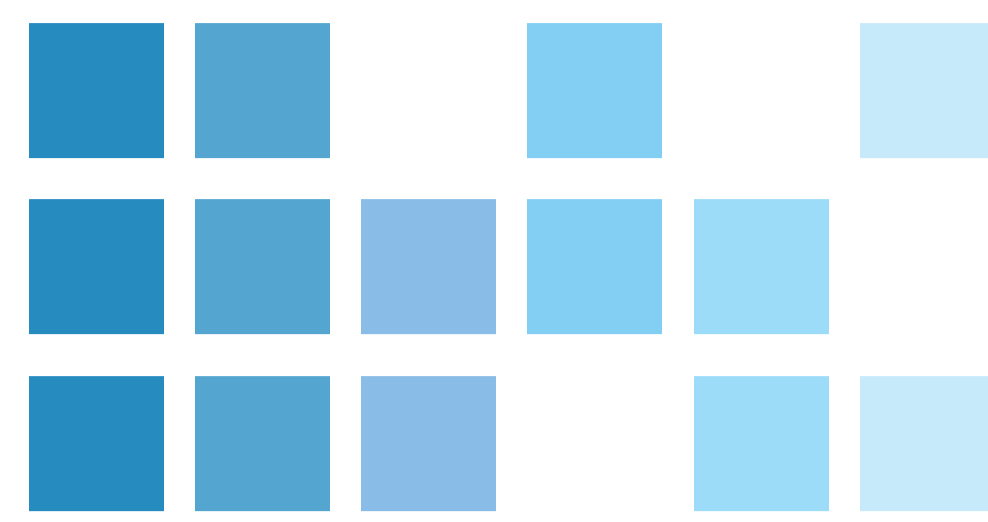
过载能力强、特性硬、无滑差，无编码器控制亦能精确控制。Remarkable speed accuracy in sensorless control with high performance and non-slip.



无编码器速度控制 Speed Sensorless Control		
	IM	IPM
范围Range	1:40	1:100
速度控制精度 Accuracy	±2%	±0.01%

MPPM系列永磁同步电动机

MPPM Series IPM Synchronous Motor



推荐本公司控制柜
欢迎客户洽谈定制

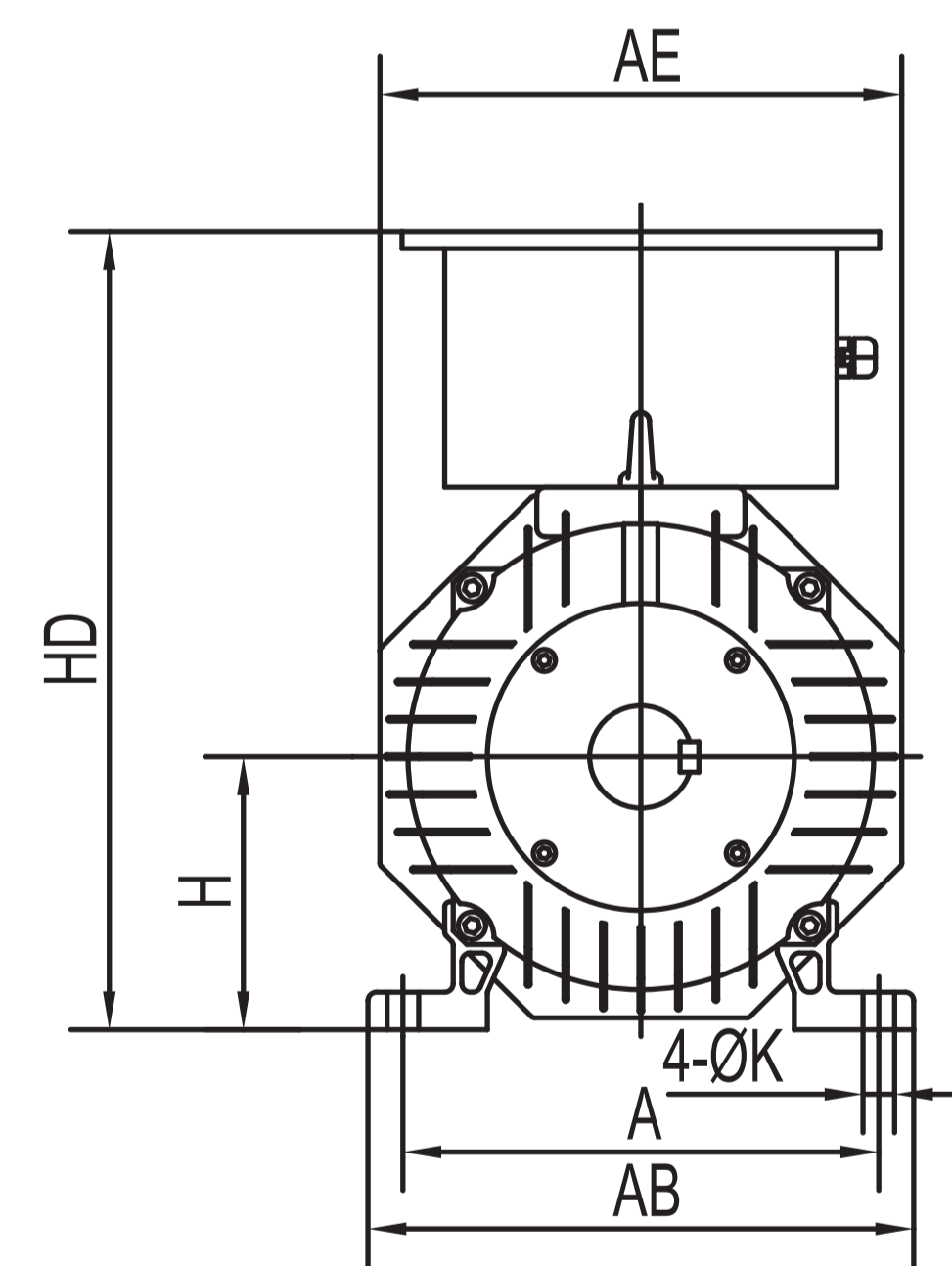
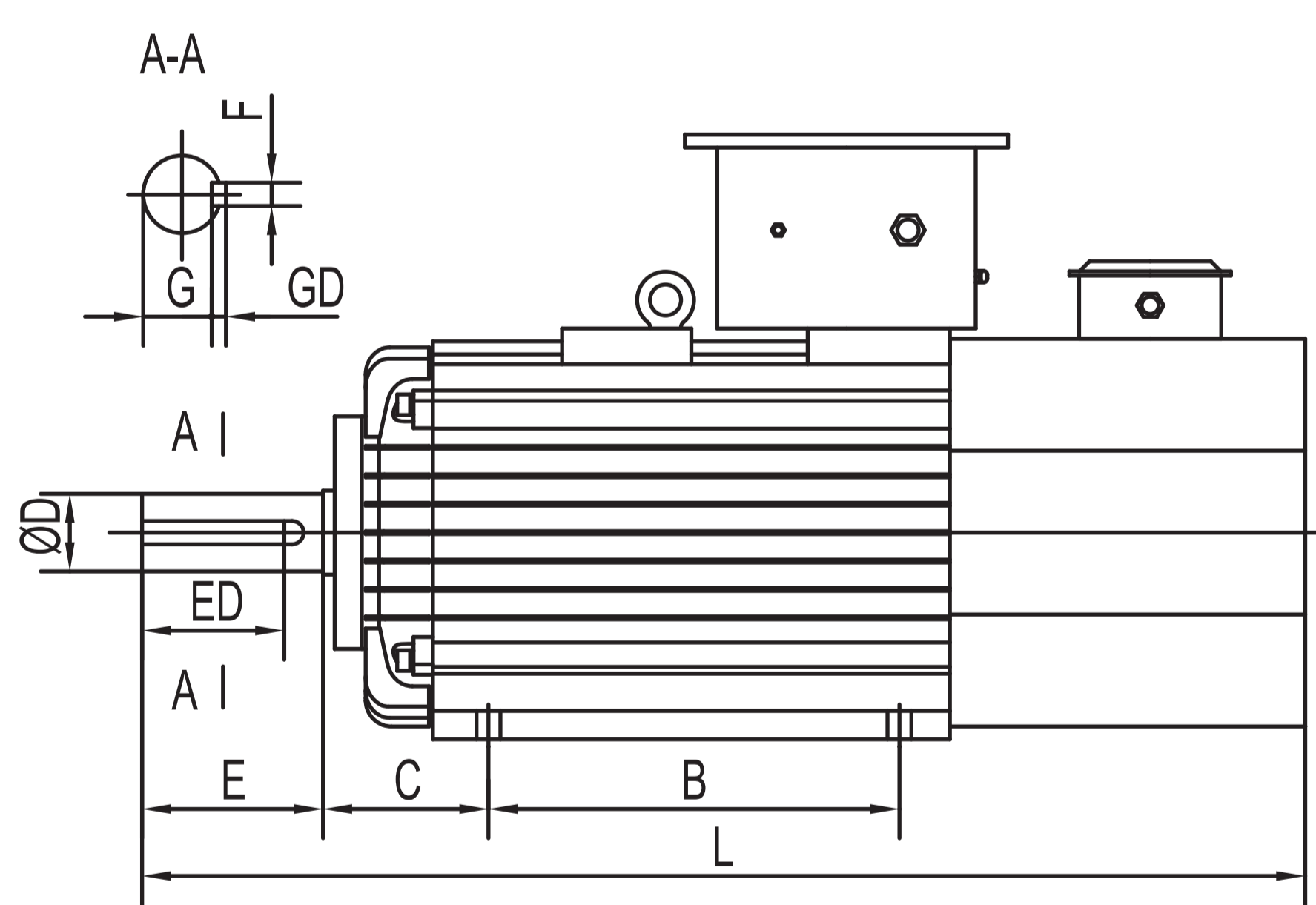
Recommended to our control system
Welcome to negotiate and order



标准式样 Standard Specifications

电源电压	Voltage	400V (Inv.)	绝缘等级	Insulation	F
电机极数	Poles	6	安装型式	Mounting	IMB3
过载能力	Overload	150%	防护等级	Protection	IP44
工作制	Duty	S1	冷却方式	Cooling	IC416
功率 Power	转速 Speed	1800 r/min	1500 r/min	1200 r/min	
	18.5 kW	MPPM132S-6	MPPM132M-6	MPPM132L-6	
	22 kW	MPPM132M-6	MPPM132L-6	MPPM160S-6	
	30 kW	MPPM132L-6	MPPM160S-6	MPPM160M-6	
	37 kW	MPPM160S-6	MPPM160M-6	MPPM160L-6	
	45 kW	MPPM160M-6	MPPM160L-6	MPPM180S-6	
	55 kW	MPPM160L-6	MPPM180S-6	MPPM180M-6	
	75 kW	MPPM180S-6	MPPM180M-6	MPPM180L-6	
	90 kW	MPPM180M-6	MPPM180L-6	MPPM200S-6	
	110 kW	MPPM180L-6	MPPM200S-6	MPPM200M-6	
	132 kW	MPPM200S-6	MPPM200M-6	MPPM200L-6	

外形尺寸 Dimensions

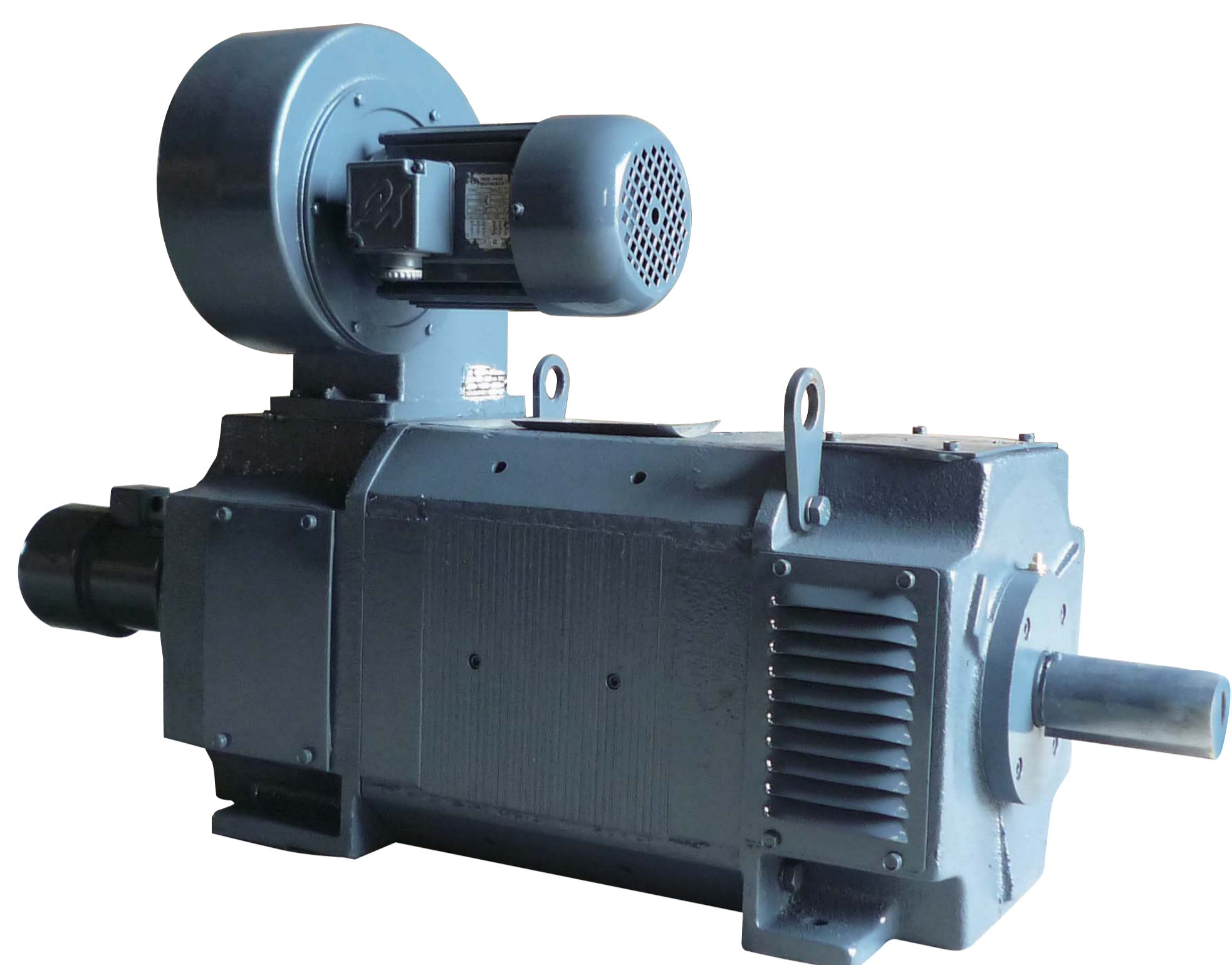


Type	A	B	C	D	E	ED	F	G	GD	H	K	AB	AE	HD	L
MPPM132	254	254	108	55	110	90	16	49	10	132	14.5	300	260	380	850
MPPM160	279	318	168	60	140	110	18	53	11	160	18.5	322	320	440	940
MPPM180	318	406	168	75	140	110	20	67.5	12	180	24	395	360	530	1190
MPPM200	406	508	168	95	170	135	25	86	14	200	24	435	440	590	1450

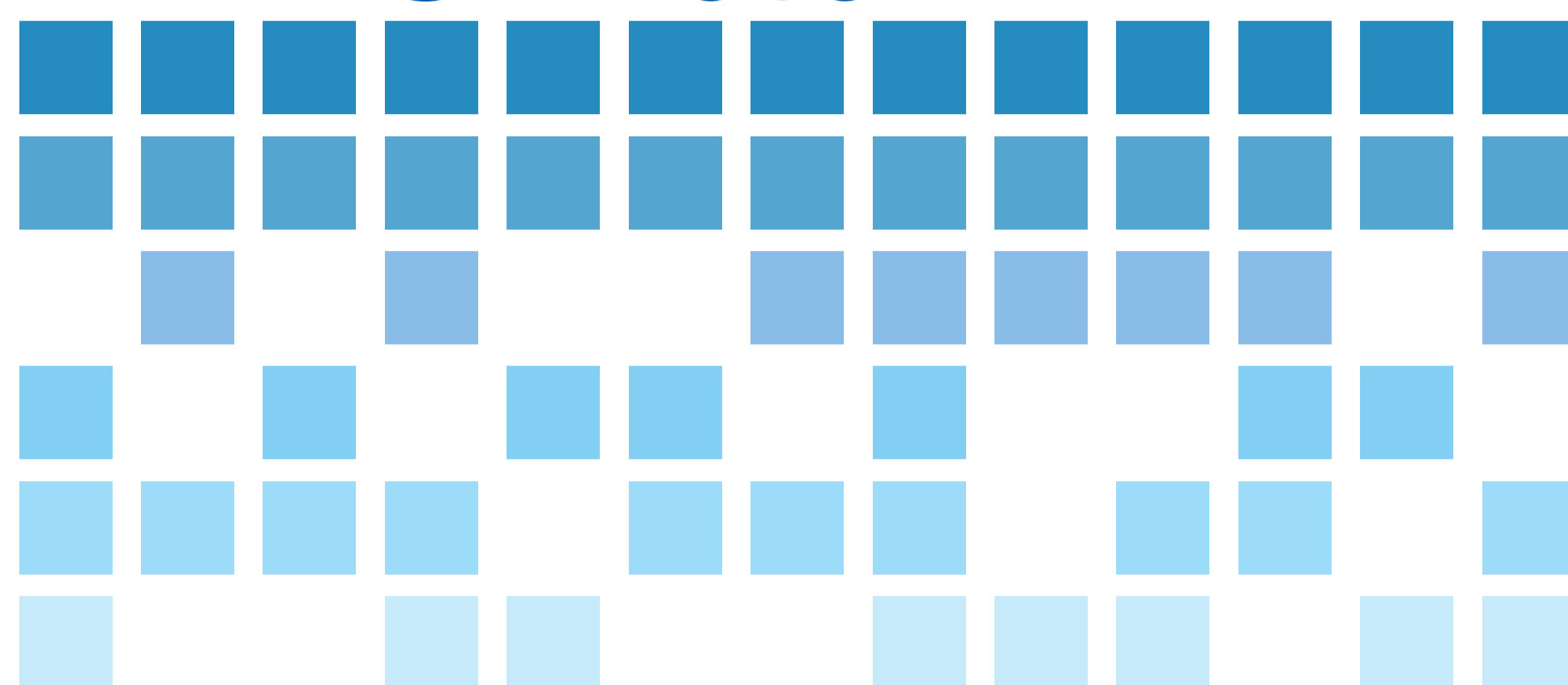
本产品在改进的同时，资料可能有所改动，恕不另行通知。
A part of specification and dimension is subject to change without notification in advance because of improvement of product, for which please understand.

资料编号 File No. 0MP.620.002
版本编号 Version 20110722

MPPM IPM Motor



Z4直流电机 Z4 DC Motor



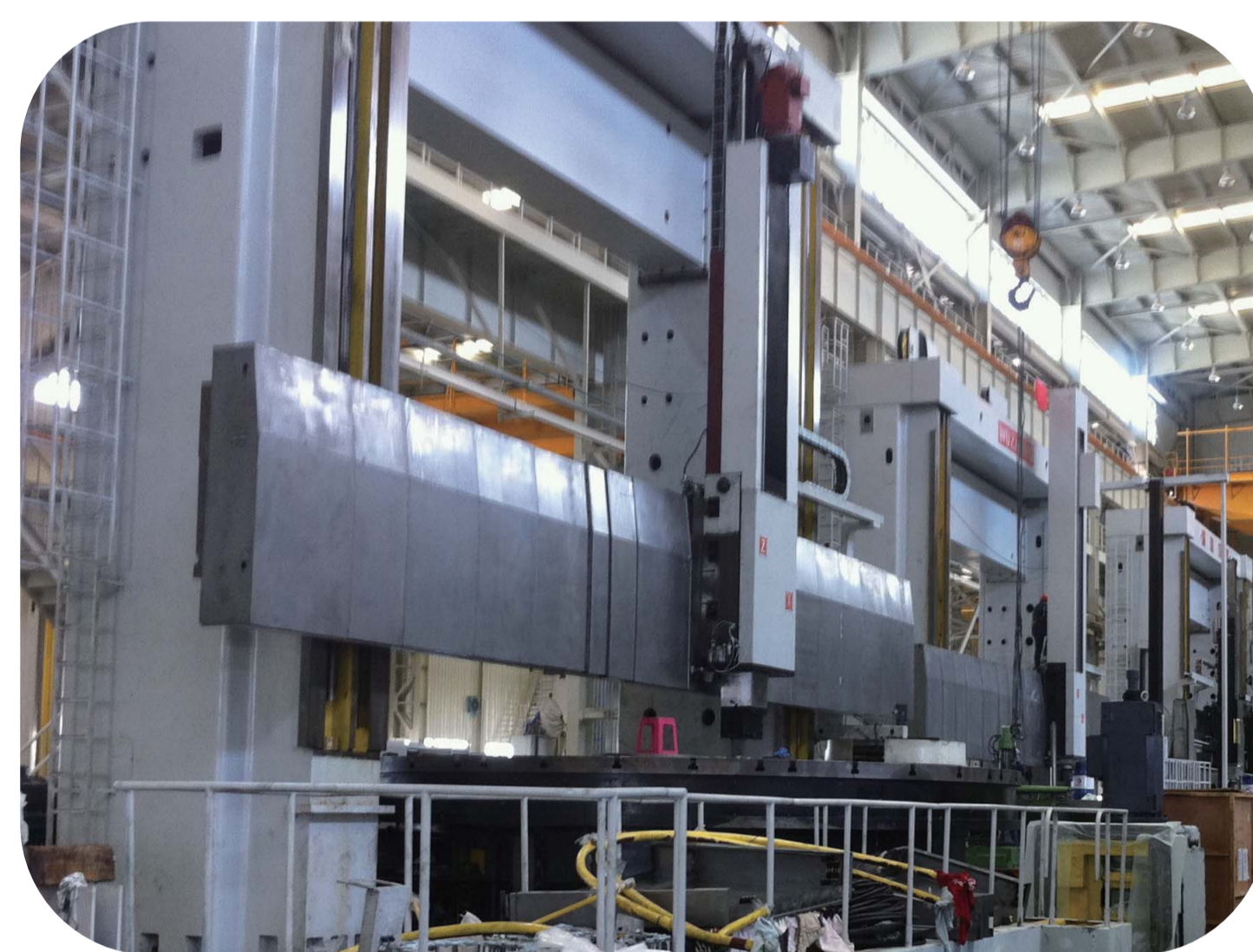
简介 Profile

- | | |
|----------|------------------------------|
| ○ 国际先进水平 | International Advanced Level |
| ○ 八角形结构 | Octagonal-shaped Structure |
| ○ 空间利用高 | High Space Utilization |
| ○ 叠片式定子 | Stator Yoke Fold |
| ○ 整流器供电 | Rectifier Power Supply |
| ○ 磁极精确定位 | Poles Have Accurate Location |



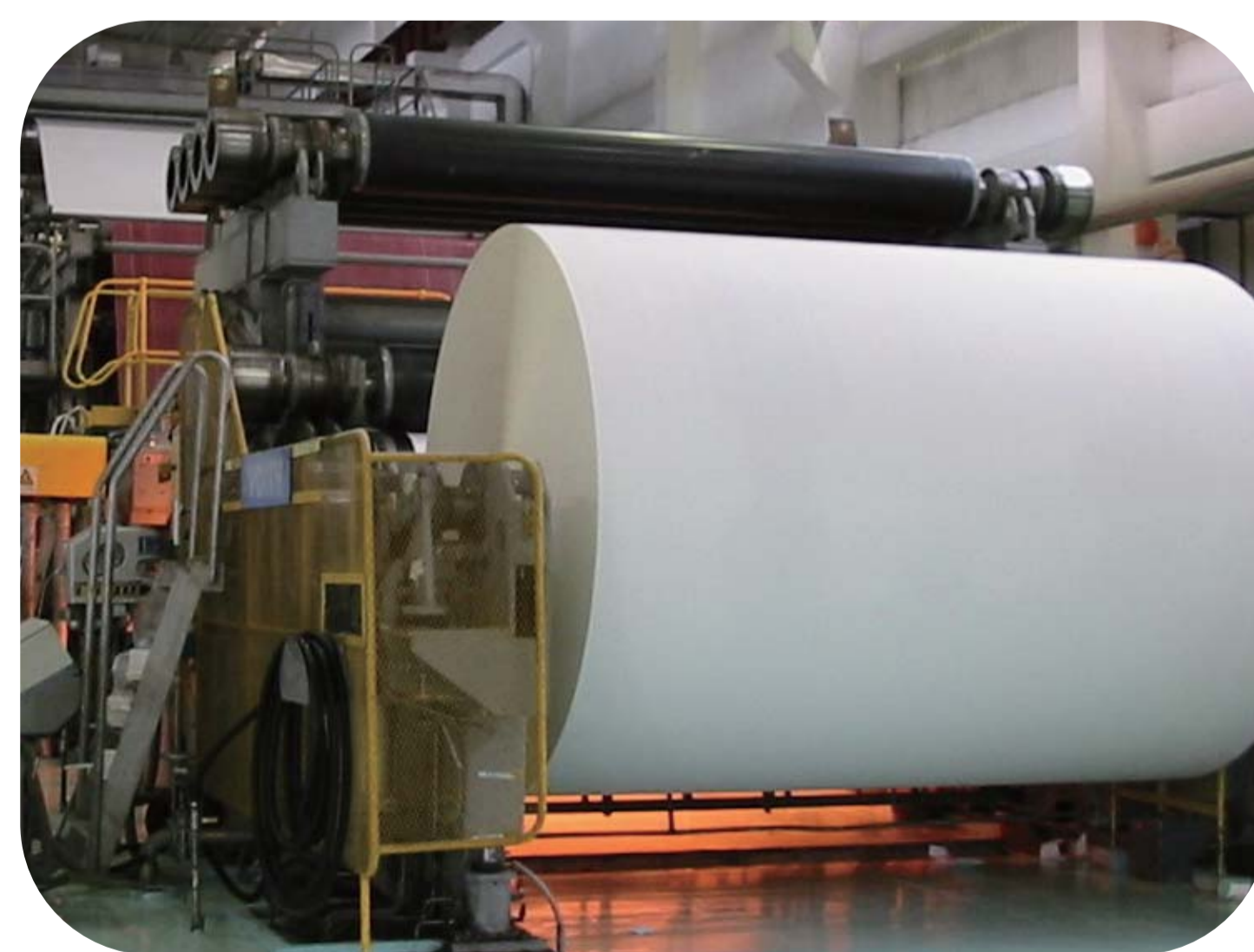
特点 Features

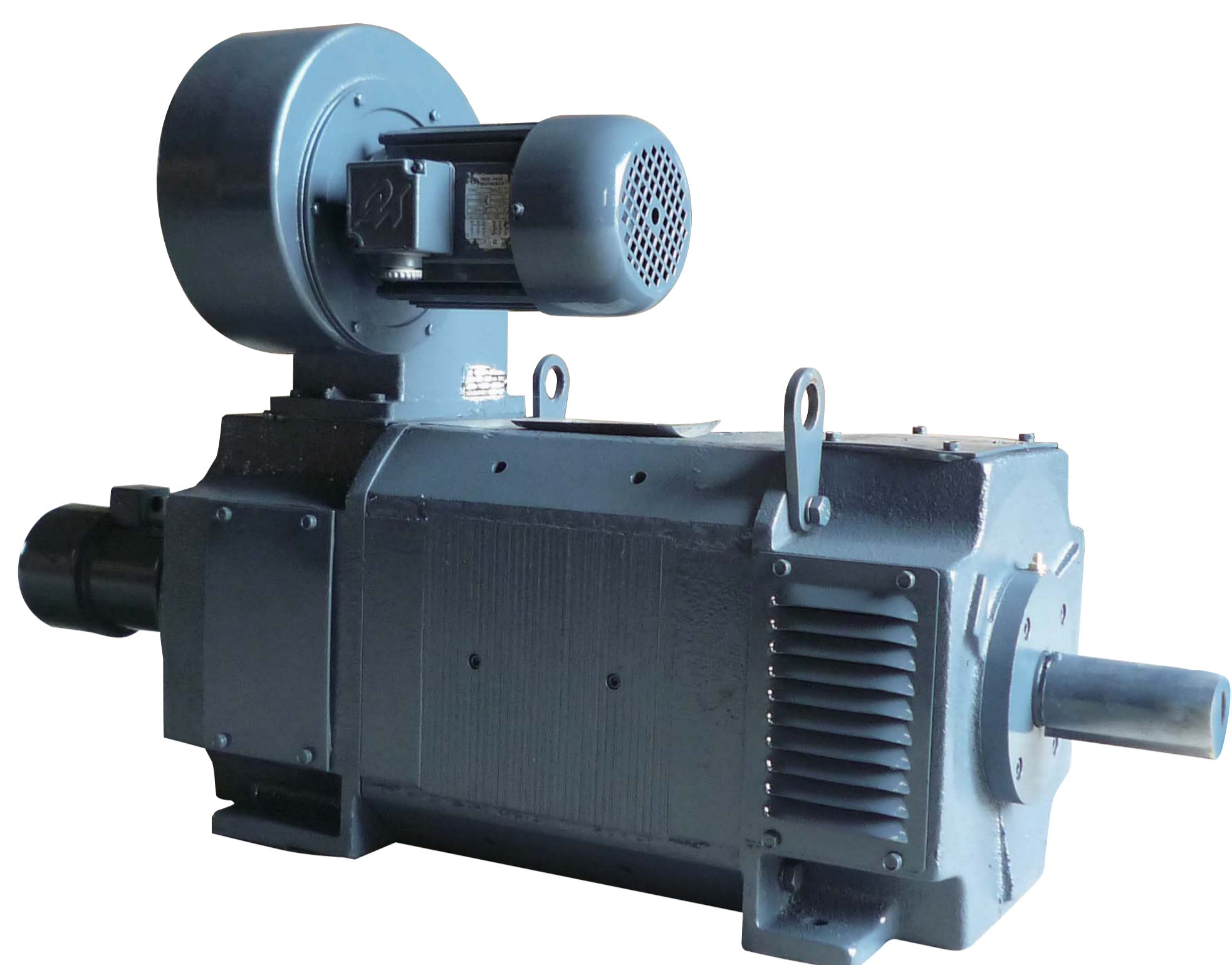
- | | |
|--------|------------------|
| ○ 体积小 | Small Size |
| ○ 重量轻 | Light Weight |
| ○ 性能好 | Good Performance |
| ○ 效率高 | High Efficiency |
| ○ 输出大 | Large Output |
| ○ 可靠性高 | High Reliability |



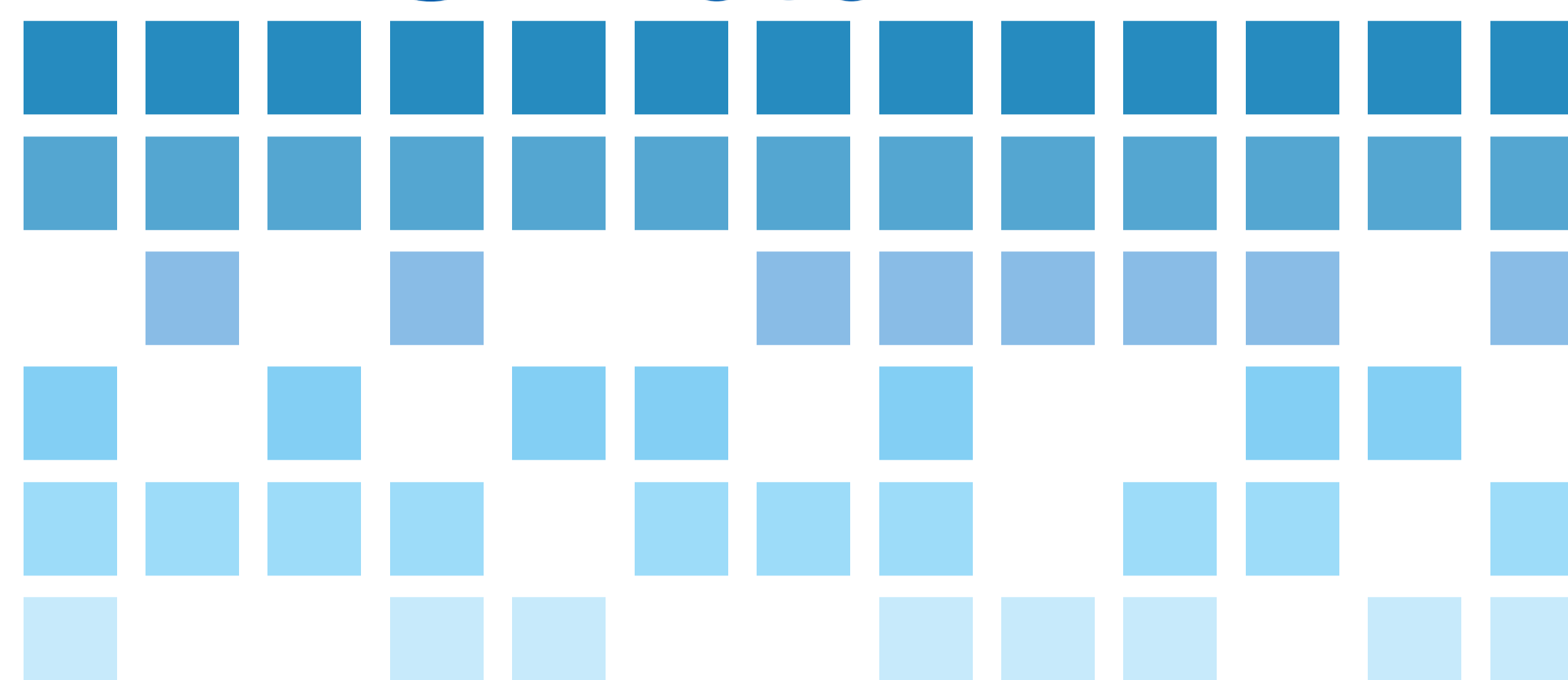
用途 Uses

- | | |
|----------|------------------------------|
| ○ 冶金轧机转动 | Rolling Mill Rotation |
| ○ 金属切削机床 | Metal Cutting Lathes |
| ○ 塑料挤出机械 | Plastic Extrusion Machine |
| ○ 造纸印刷机械 | Papermaking Printing Machine |
| ○ 纺织印染机械 | Textile Dyeing Machine |
| ○ 水泥生产设备 | Cement Production Equipment |





Z4直流电机 Z4 DC Motor



简介 Profile

- | | |
|----------|------------------------------|
| ○ 国际先进水平 | International Advanced Level |
| ○ 八角形结构 | Octagonal-shaped Structure |
| ○ 空间利用高 | High Space Utilization |
| ○ 叠片式定子 | Stator Yoke Fold |
| ○ 整流器供电 | Rectifier Power Supply |
| ○ 磁极精确定位 | Poles Have Accurate Location |



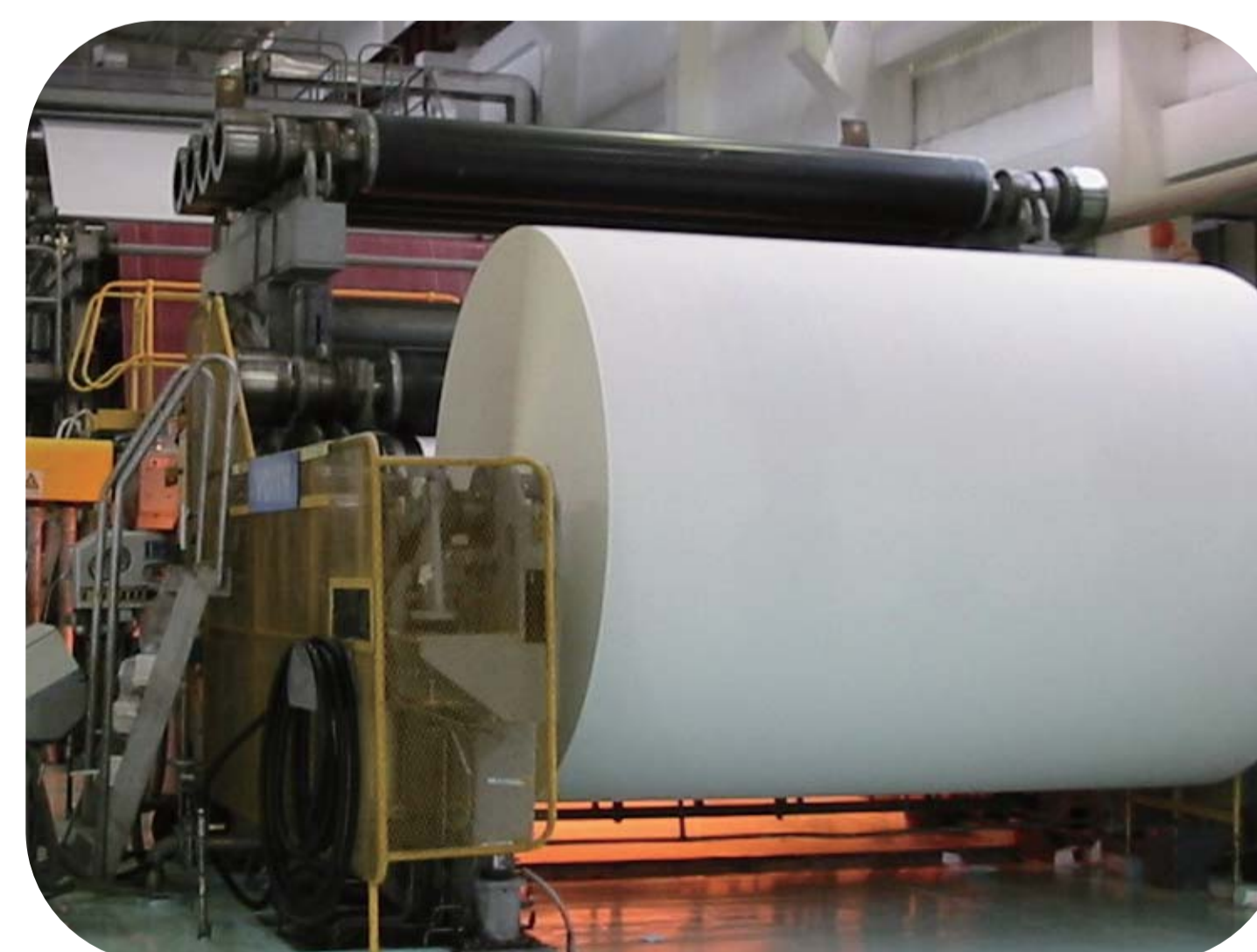
特点 Features

- | | |
|--------|------------------|
| ○ 体积小 | Small Size |
| ○ 重量轻 | Light Weight |
| ○ 性能好 | Good Performance |
| ○ 效率高 | High Efficiency |
| ○ 输出大 | Large Output |
| ○ 可靠性高 | High Reliability |



用途 Uses

- | | |
|----------|------------------------------|
| ○ 冶金轧机转动 | Rolling Mill Rotation |
| ○ 金属切削机床 | Metal Cutting Lathes |
| ○ 塑料挤出机械 | Plastic Extrusion Machine |
| ○ 造纸印刷机械 | Papermaking Printing Machine |
| ○ 纺织印染机械 | Textile Dyeing Machine |
| ○ 水泥生产设备 | Cement Production Equipment |





会社概要

東洋電機製造は、交通事業・産業事業・情報機器事業の3分野で事業を展開しています。

交通事業では、鉄道車両用電機品のリーディングカンパニーとして、産業分野では生産設備機械のモータ、インバータ等の産業用電機品を中心に展開、情報機器分野では駅務機器や遠隔監視システムを開発・製造しています。

当社はエネルギー効率の高い製品作りを通して、地球温暖化防止、循環型社会の実現に取り組んでいます。



公司简介

東洋電機製造株式会社主要經營交通、産業、IT等三大領域的業務。

在交通領域，本公司是鐵道車輛用電機產品的領軍企業；在産業領域，本公司主要經營生產設備用電機、變頻器等産業電機產品；在IT領域，本公司開發生產站務設備及遠端監視系統。

我們通過製造能源使用效率高的產品，致力於地球暖化防止及迴圈型社會的建設。



Company Introduction

Toyo Denki Seizo K.K. (Toyo Electric Mfg. Co., Ltd.) engages in three main areas of business-transportation systems, industrial systems and information systems. In the field of transportation systems, Toyo Denki is a leading manufacturer of electrical equipment for rail vehicles. In the industrial sector, Toyo Denki mainly supplies motors, inverters and other electrical equipment used in industrial machinery. In the field of information systems, the company develops and manufactures station operating equipment and remote monitoring systems. Toyo Denki is strongly committed to addressing global warming and promoting recycling by developing and manufacturing energy-efficient products.

