

A Postscript to the Publisher, containing a short account of two Human Calculi of unusual form and bigness, from the same F. S. M. D.

SIR,

I Here send you the Figure of a *Stone*, *Fig. 1.* of a prodigious size and as rare a *shape*, somewhat resembling indeed the *Kidney*, for that was quite worn away, and this *stone* fill'd up the *place*, it weigh'd indeed somewhat more when I took it out of the *Body*, than it does now, for it then weigh'd seven ounces and a half; there is no *History* that relates any account of a *stone* generated in the *Kidney*, that does near parallel this. Without breaking it a funder, I can find it does consist of several *laminae* laid over one another, as that of the *Bladder* does: I took the *Circumference*, and found it to measure seven Inches upon the round.

That taken out of the *Body* of the late *Duke of Norfolk's* Father, *Fig. 2.* was brought not long since to the *R. Society* by *Sr. Theodore de Vaux*, who gave me leave to send you the *Figure* of it, which you see is branched, and seems to have spread some branches into great *Vessels*, whether *Arteries*, *Veins* or into the *Ureter* I cannot determine, tho' these as well as the *Pelvis* seem to have been fill'd up by this great *stone*: yet this comes far short of that before mention'd, since it weighs but four ounces and a half: a *stone* indeed of an incredible size to be found in the *Kidney*. The measure longwise from one extreme to the other made four Inches compleat: the extension of the *Branches* from one to the other measur'd crosswise or transversely, 3 Inches and a half. This is deservedly laid up in the *Repository* of the *Royal Society*, as a great but sorrowful *Rarity*, having caused the death of so great a *Patron* of *Learning*.

An

Philosoph. Transact.

Fig. 3.

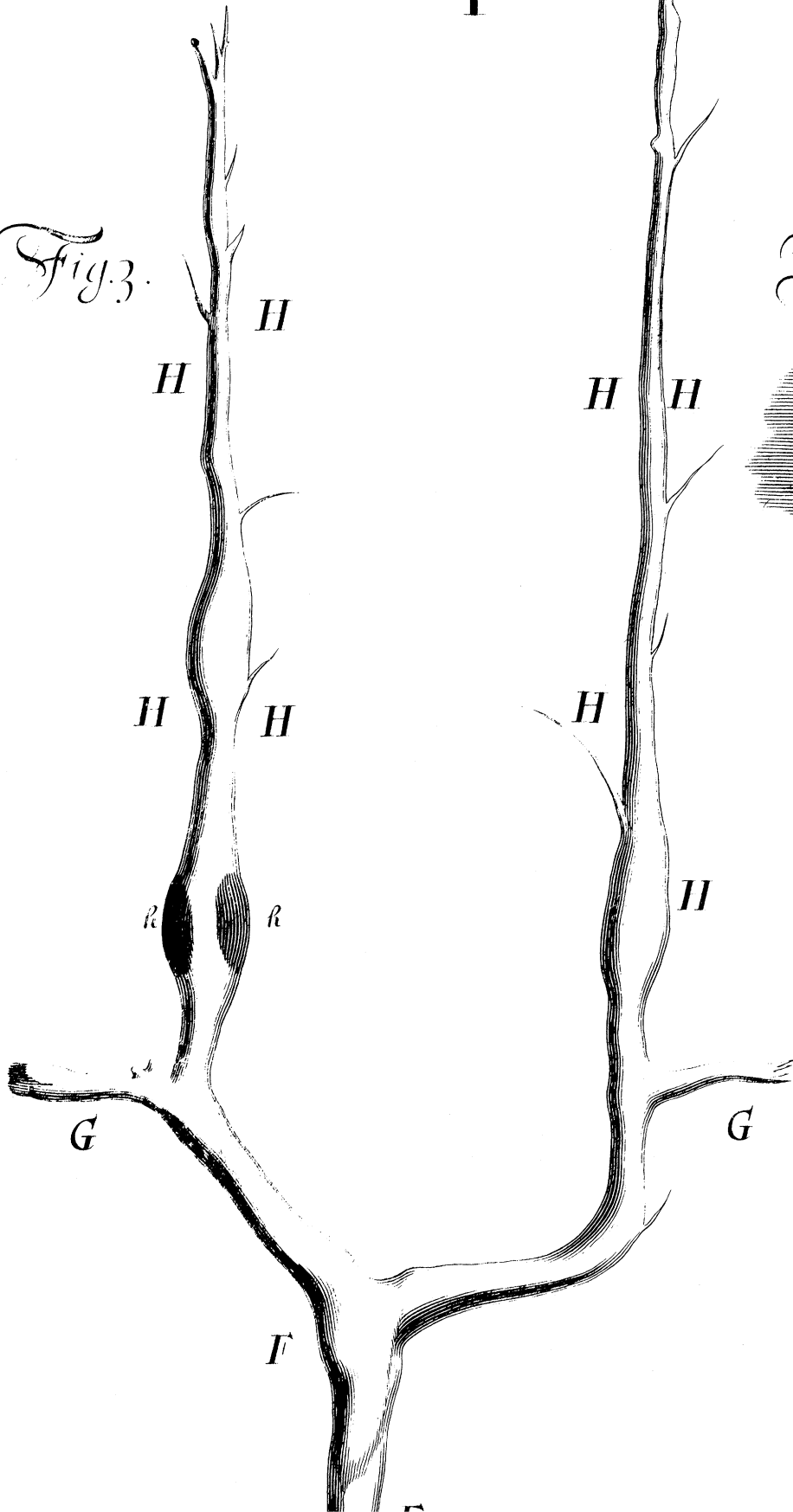


Fig. 2.



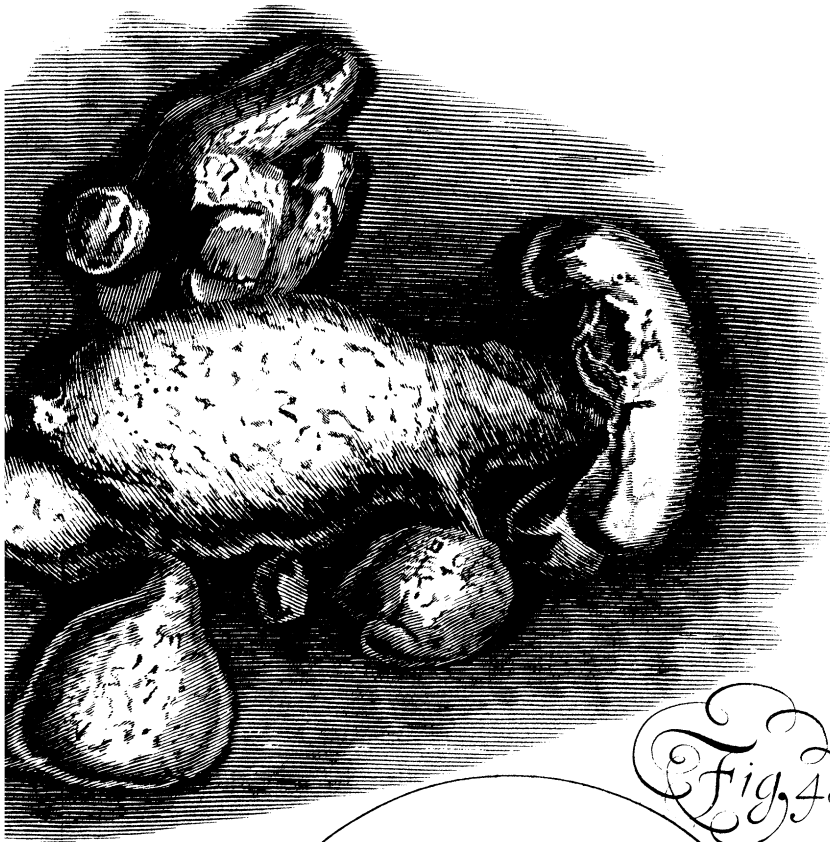
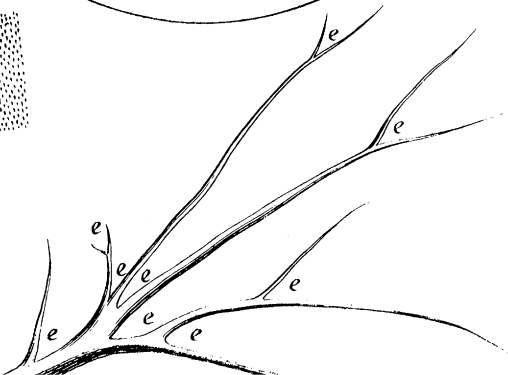
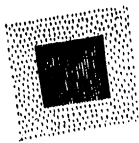


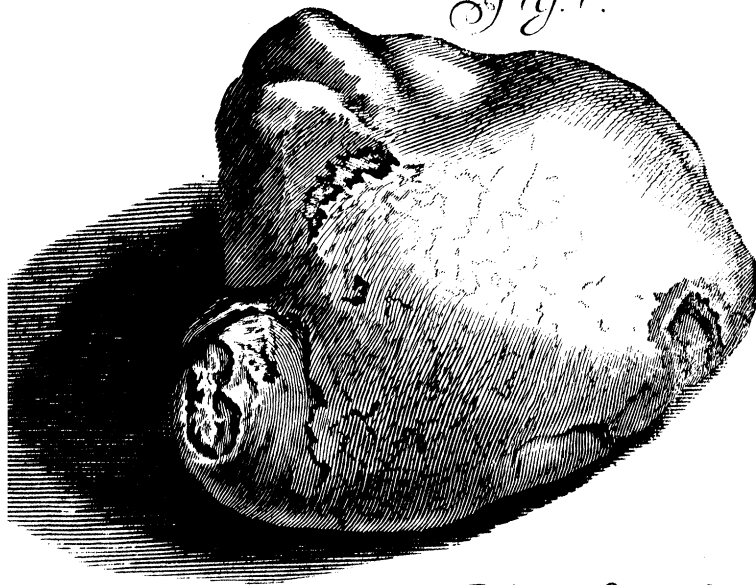
Fig. 4.







*Fig. 1.*



*A. Burgkers sculp.*

Fig. 3.

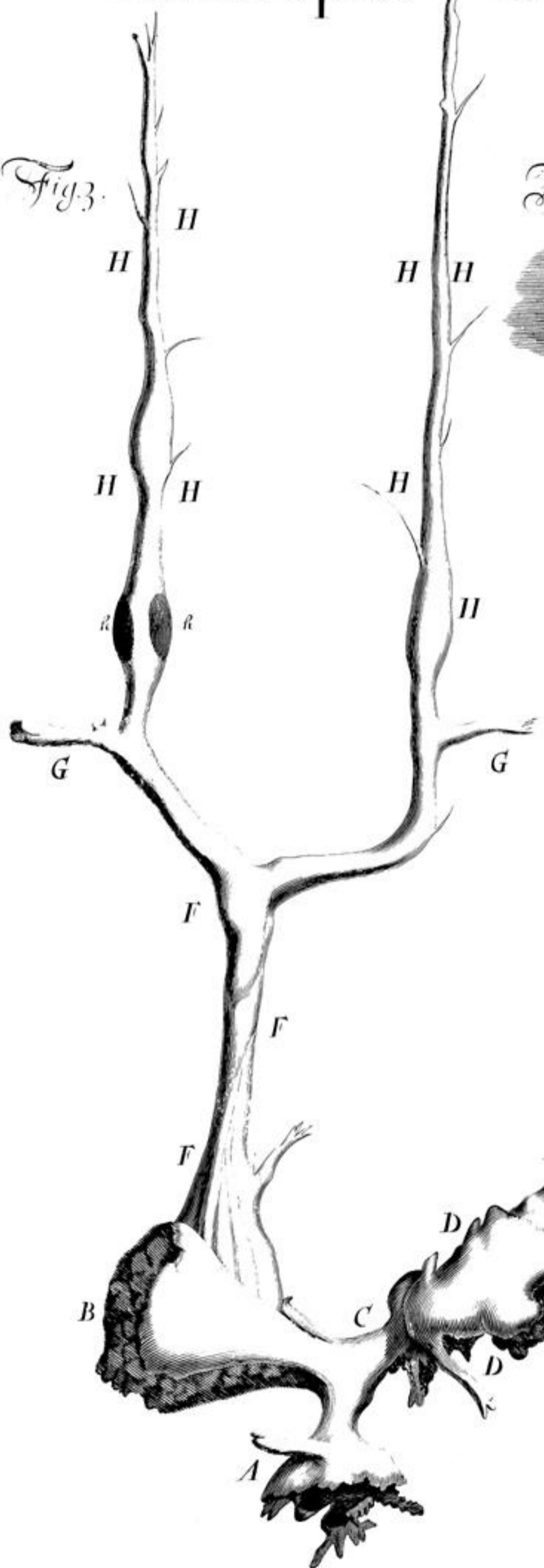


Fig. 2.

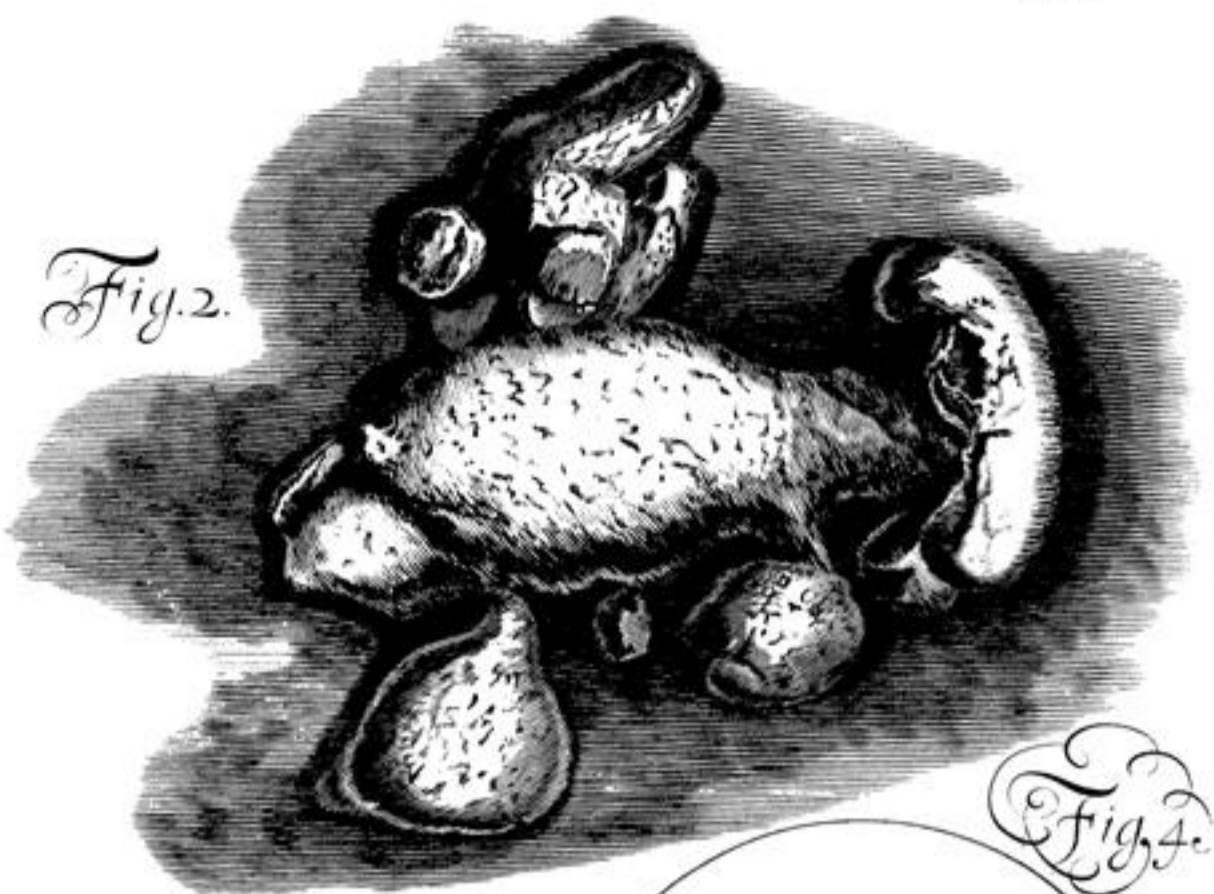


Fig. 4.



Fig. 1.



A. Burghers sculp.