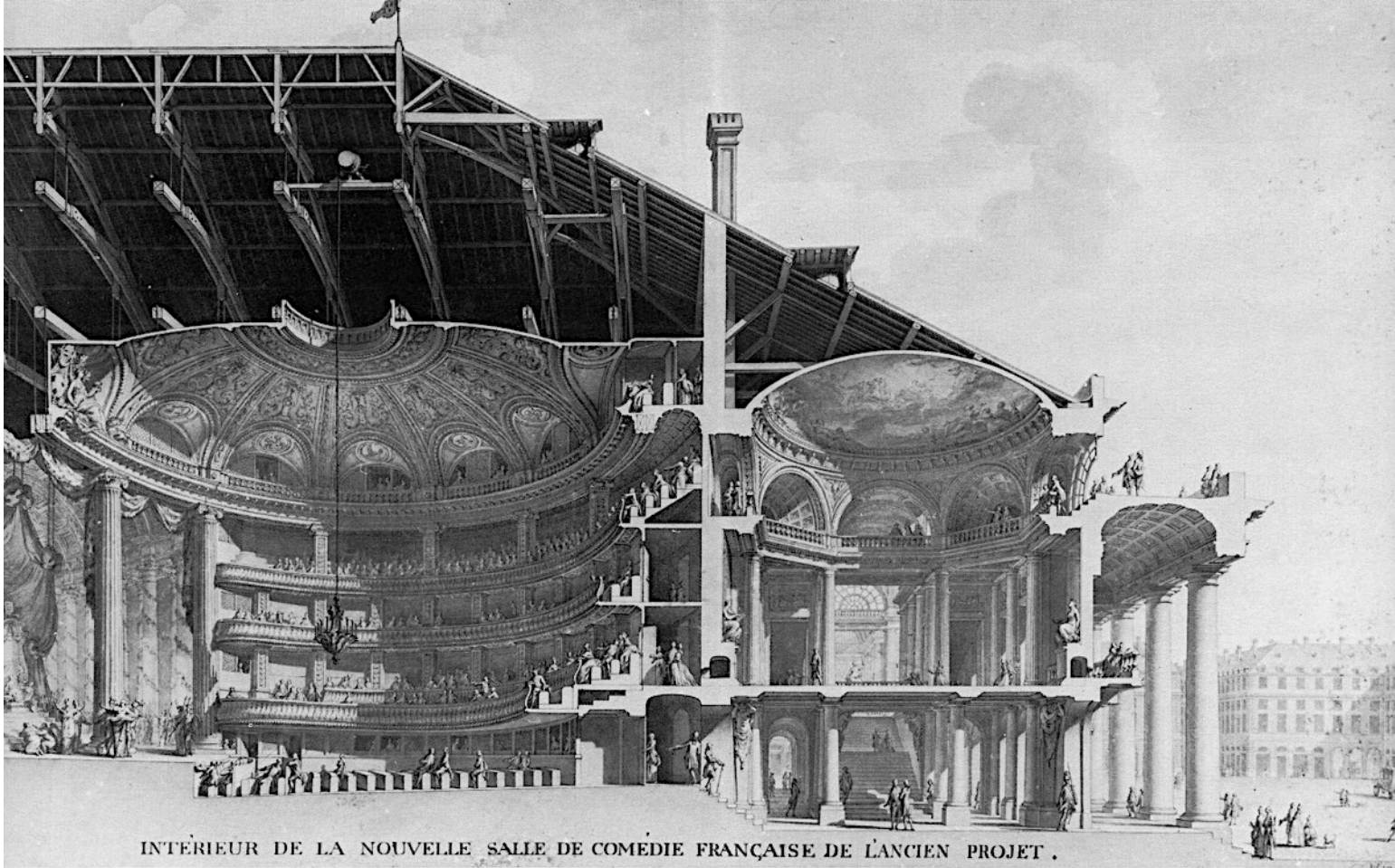
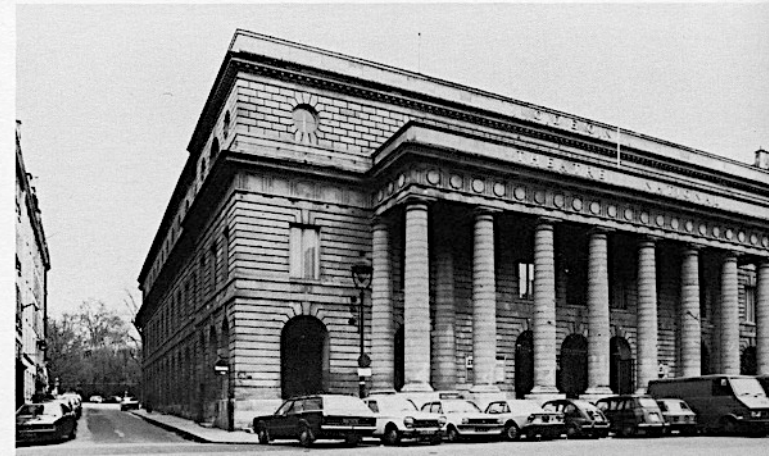


7 Francia  
1750-1800,  
ragione,  
sensazioni,  
sublime.  
Fonvi

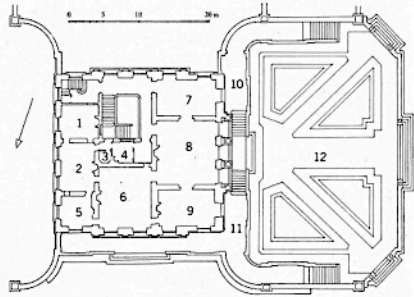


Marie-Joseph  
Peyre 1730-85  
e Charles De  
Wailly teatro  
Odeon, Parigi  
1770, 79-82

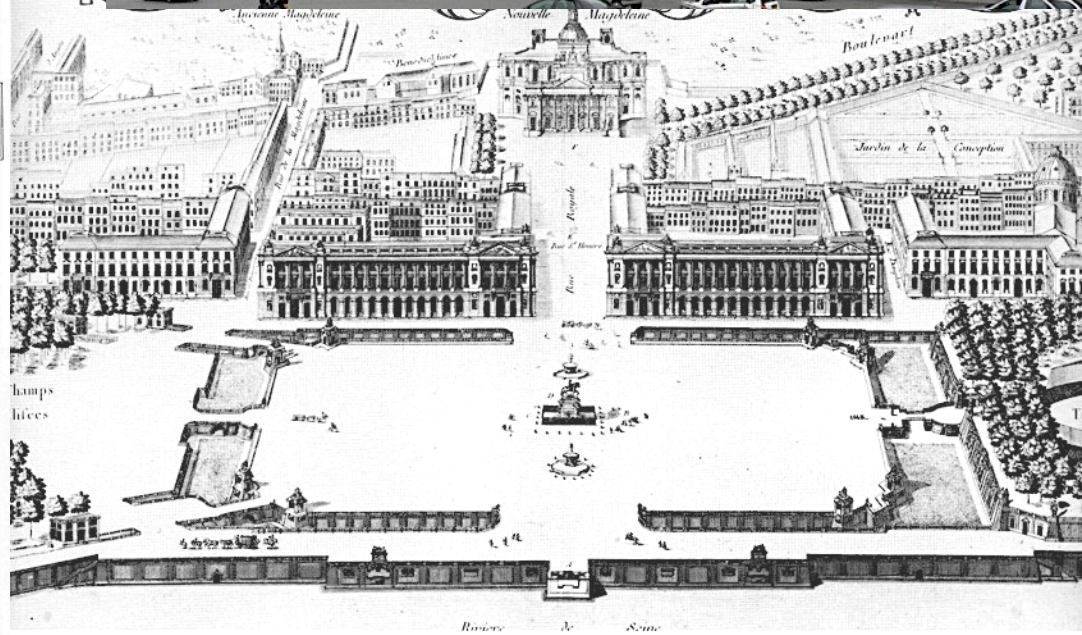


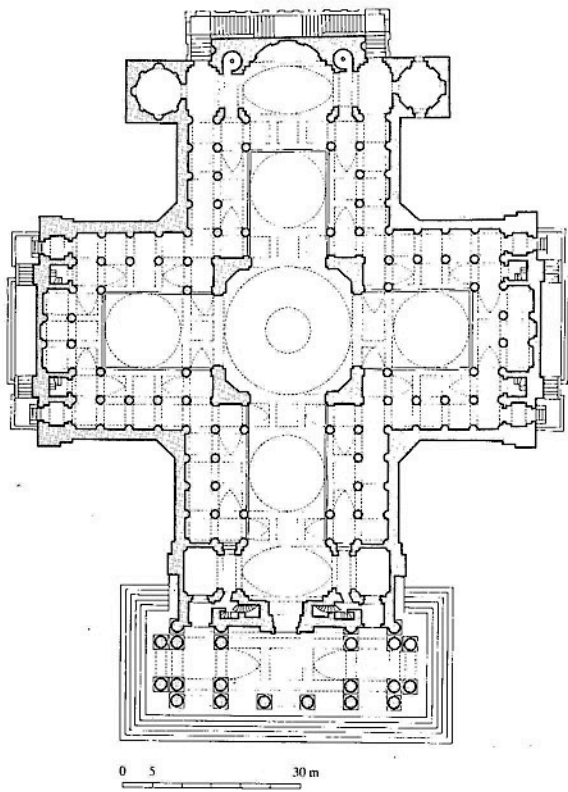
# Gabriel petit trianon 1761 e place royal ora Concorde 1753. colonne

- |                   |                  |
|-------------------|------------------|
| 1 spogliatoio     | 7 anticamera     |
| 2 camera da letto | 8 sala da pranzo |
| 3 wc              | 9 saloncino      |
| 4 bagno           | 10 terrazza      |
| 5 boudoir         | 11 terrazza      |
| 6 salone          | 12 giardino      |



*Jacques-Anges Gabriel, Petit Trianon, Versailles (1761-64):  
pianta del piano terreno e facciata verso il giardino.*





Soufflot  
Saint  
Genevieve  
in  
1753 Incont  
ro dei  
principi  
greci  
teorizzati  
da Laugier  
con  
l'ossatura  
dell'archit  
ettura  
gotica



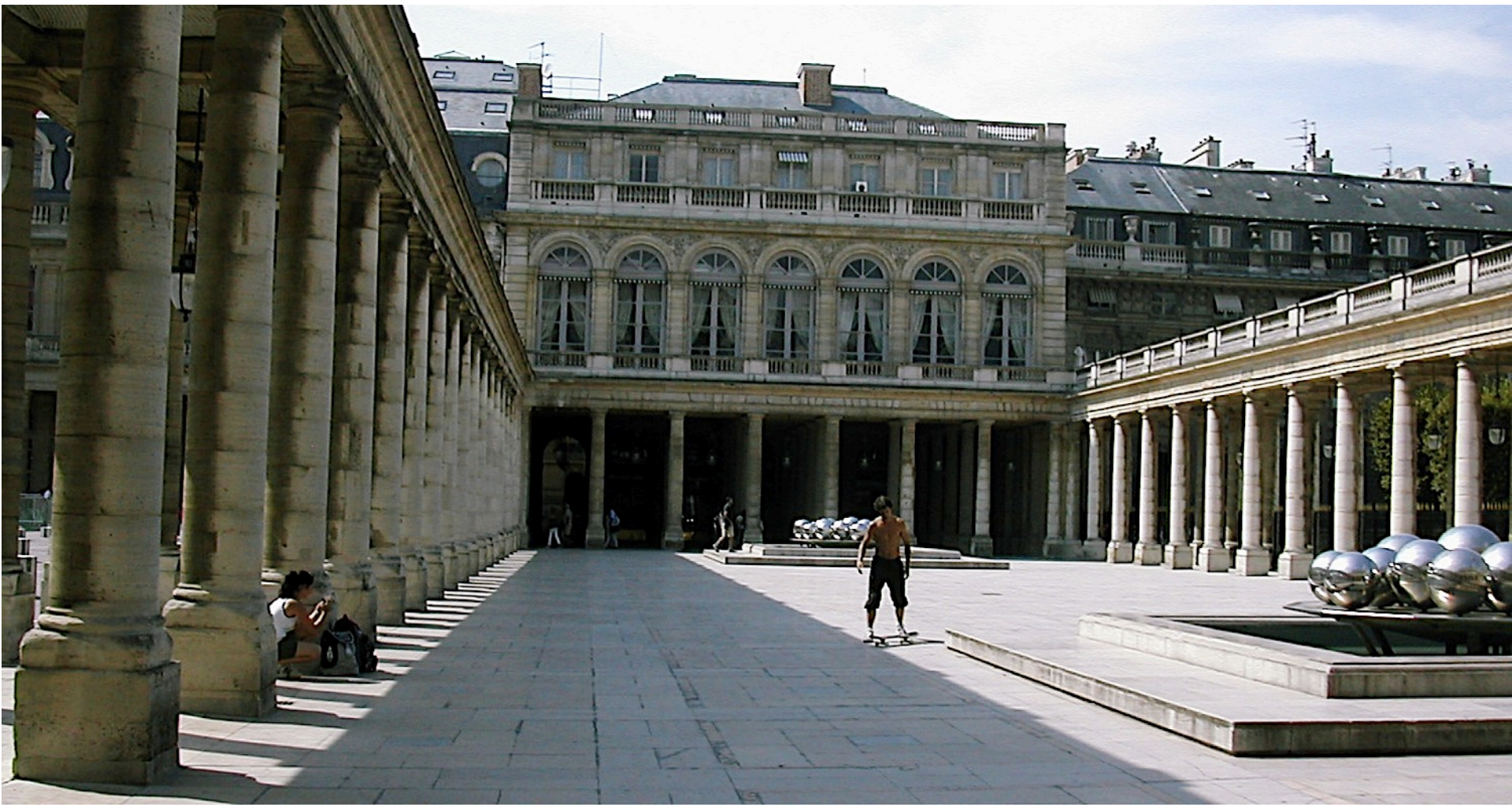
Soufflot Saint Genevieve in 1753



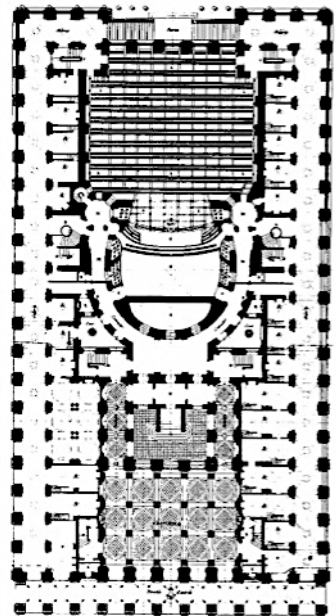
# Chalgrin saint-Philippe du Rule 1780



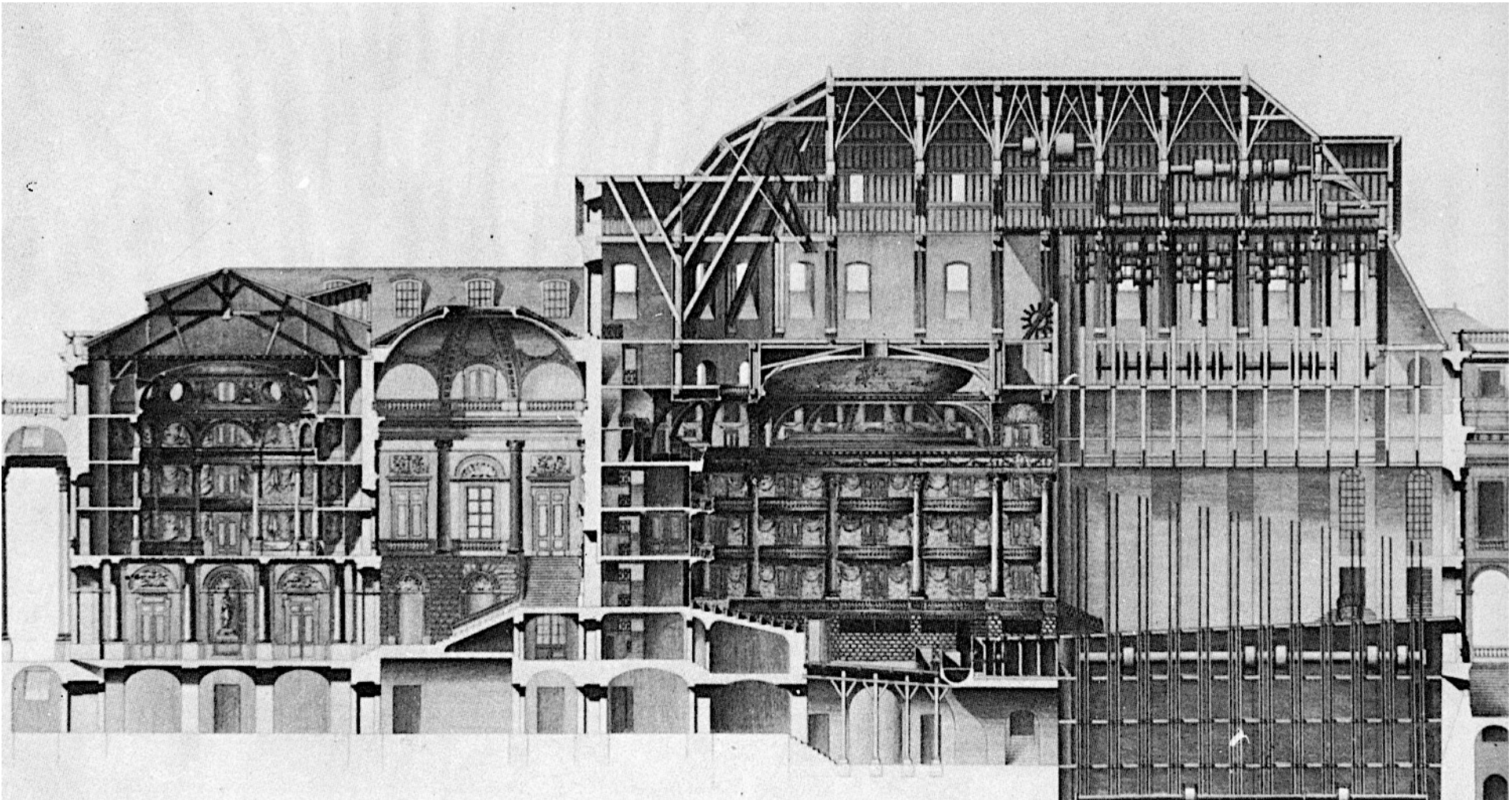
Victor Louis palais royal paris 1770



# Louis grand teatre Bordeaux 1778

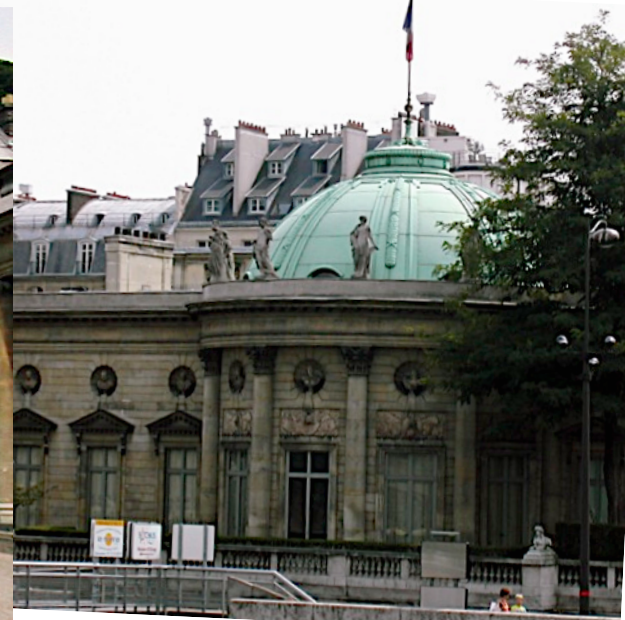


# Louis grand teatre Bordeaux 1778





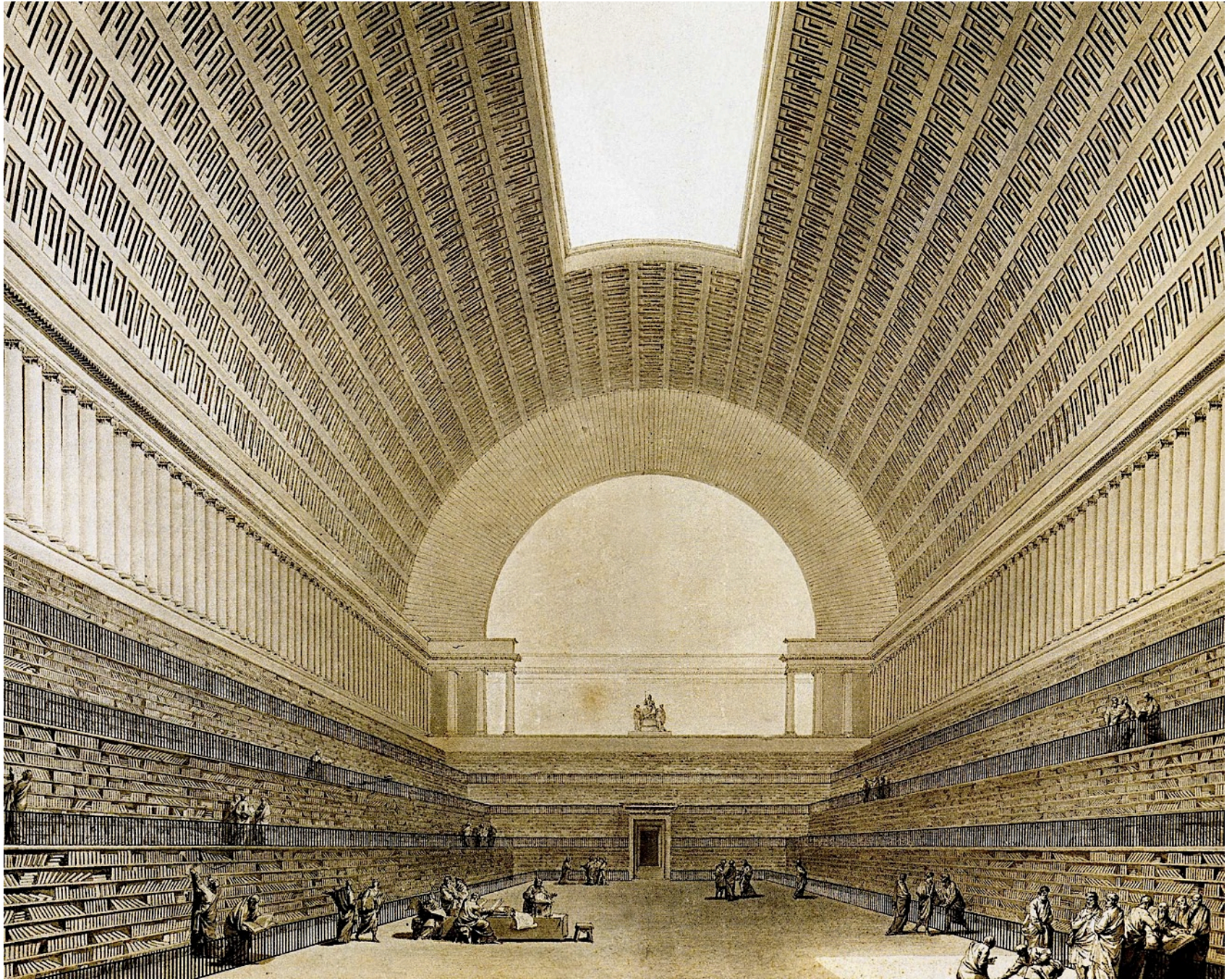
Belanger bagatelle 1775-79, Rousseau hotel de salm 1782



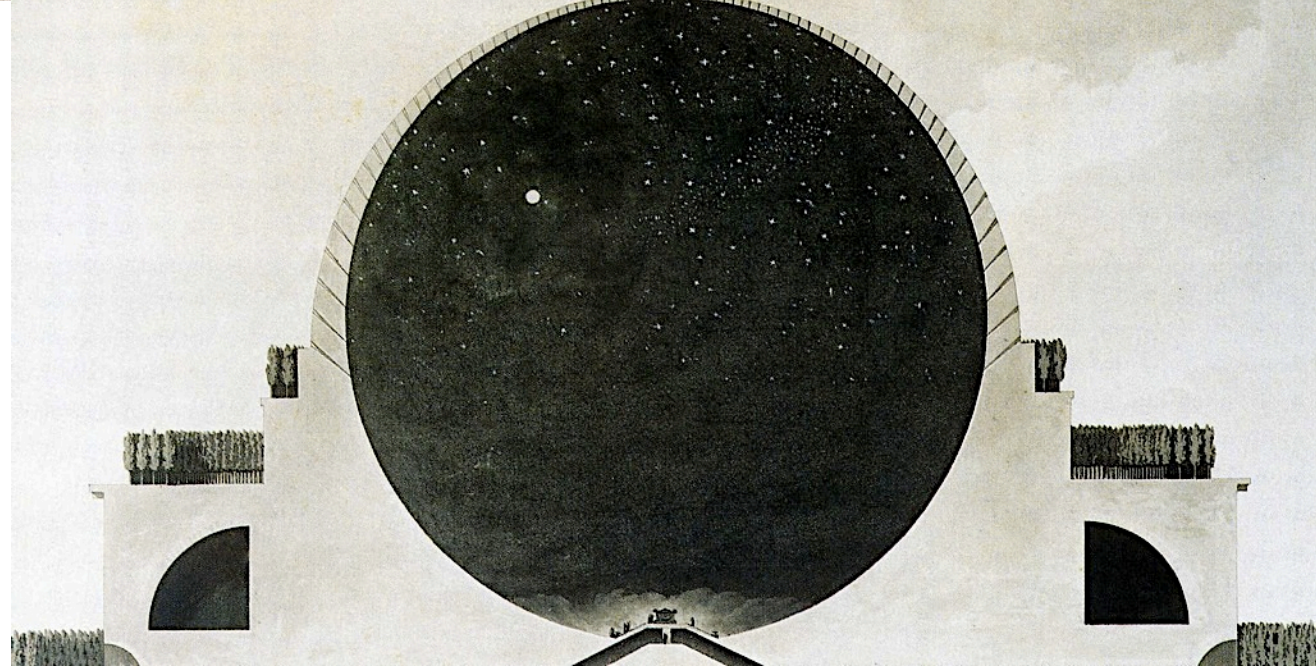
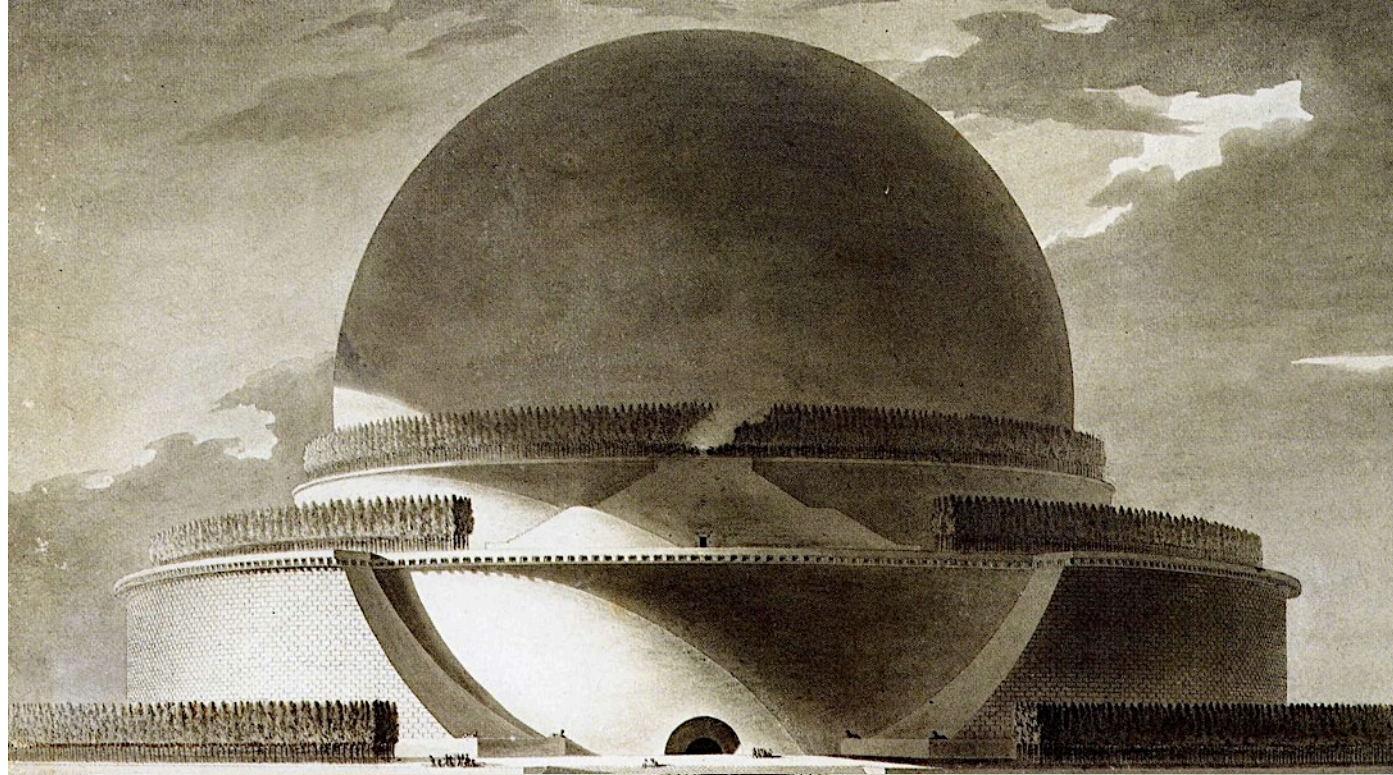
Le Camus de Mézière 1721-89 Halle de Blés Paris 1780, la cupola originale era di legno. Formulò la teoria che il carattere di un edificio doveva esprimere la sua destinazione o lo stato sociale del cliente. *Le génie de l'architecture ou l'analogie de cet art avec nos sensations*, 1780. Istituisce un parallelo fra architettura e teatro



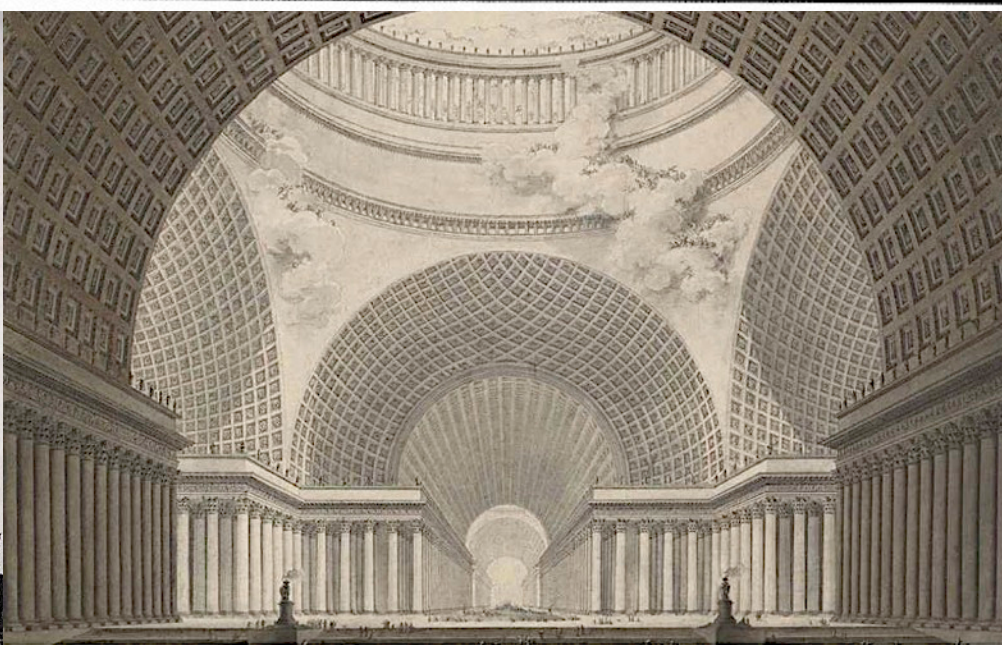
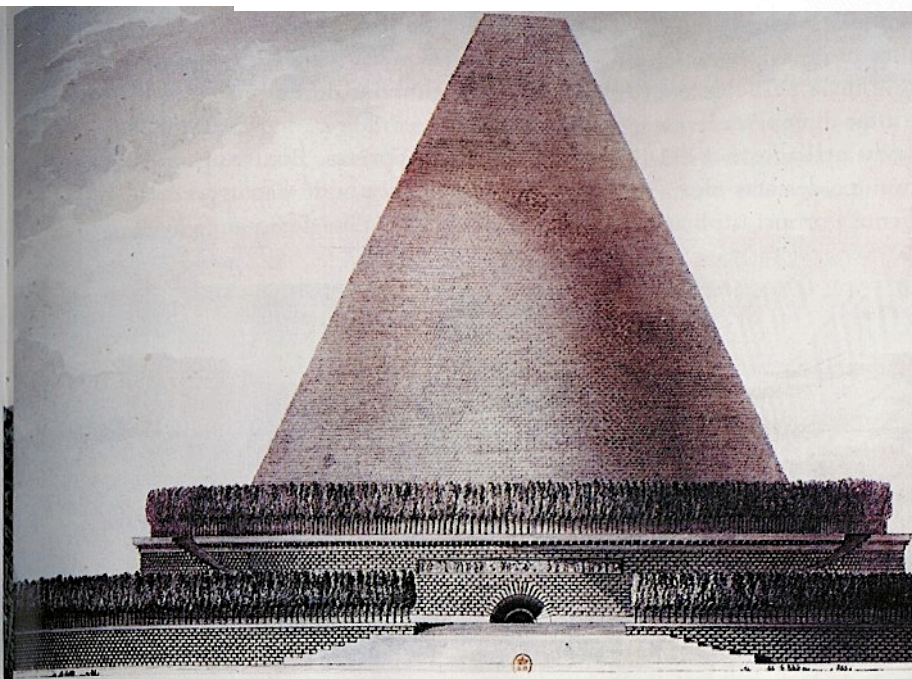
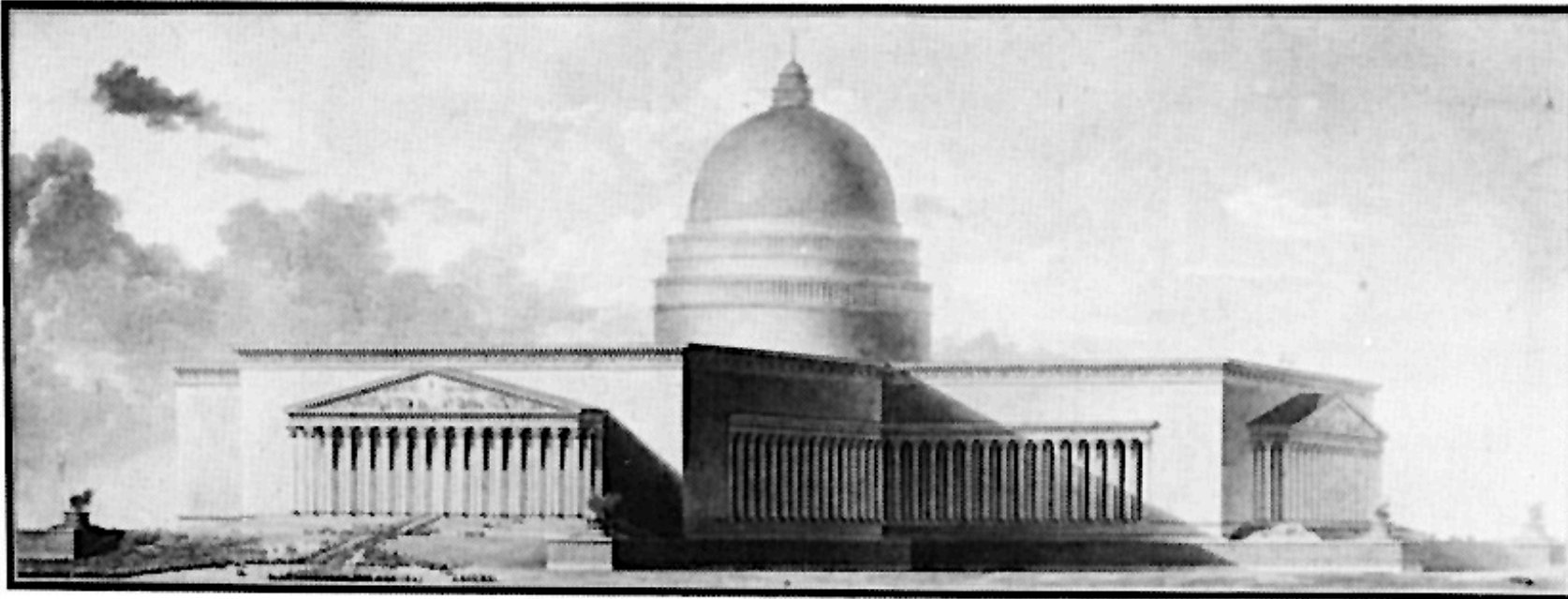
Etienne-Louis Boullée (1728-99) biblioteca 1783



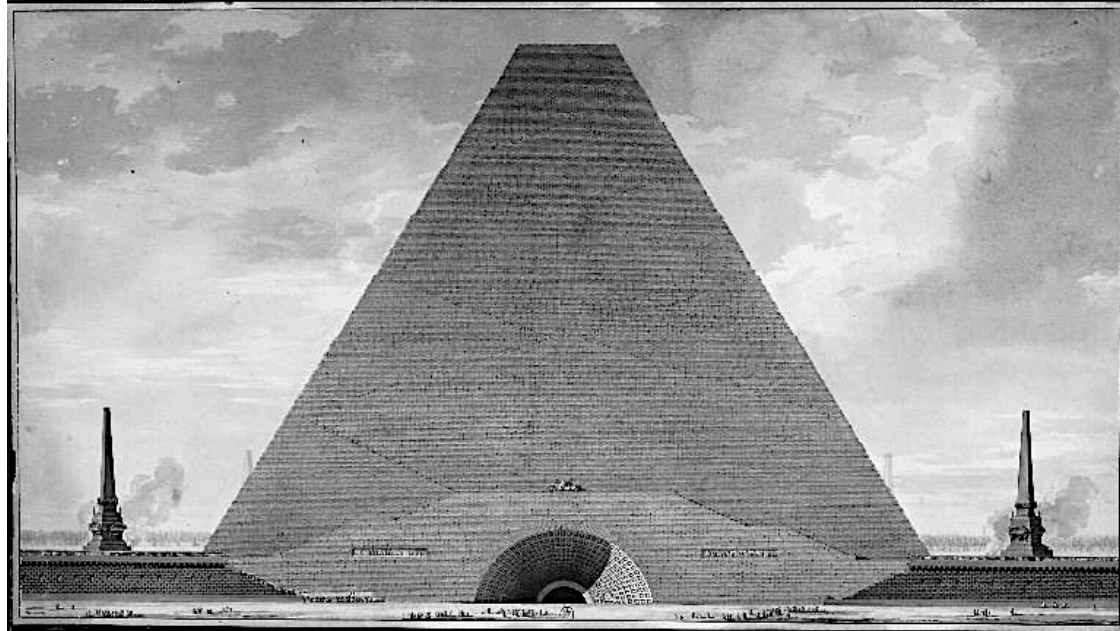
Boullée cenotafio a Newton  
Architettura visionaria piuttosto che rivoluzionaria. Fino al 1780 Boullée costruisce palazzi in città e chateaux in campagna neoclassici e monotoni. Passa poi a concepire architetture irrealizzabili immense, fuori scala, ma dalle forme semplici sull' esempio degli essay delle accademie di architettura. Un sentimento cosmico domina nel trattamento grafico, cieli tempestosi e notturni incorniciano architetture di una monumentalità che trae il proprio alimento da altri tempi della umana vicenda costruttiva (Egitto, Roma), ma che finisce inesorabilmente col trascenderli, sfociando piuttosto in una inumana grandiosità.



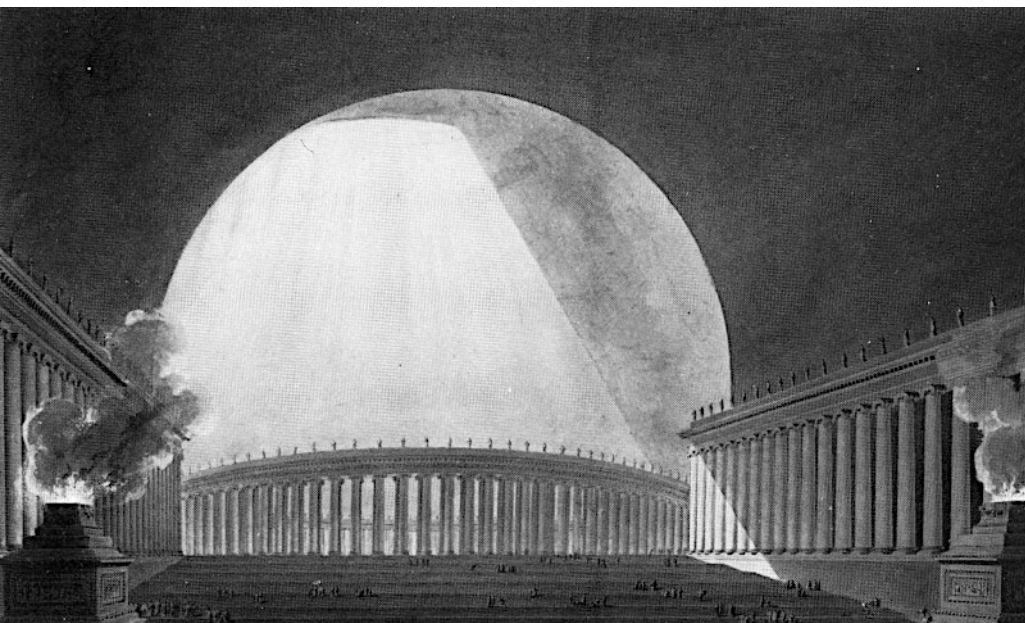
# Boullée cattedrale 1781 e cenotafio

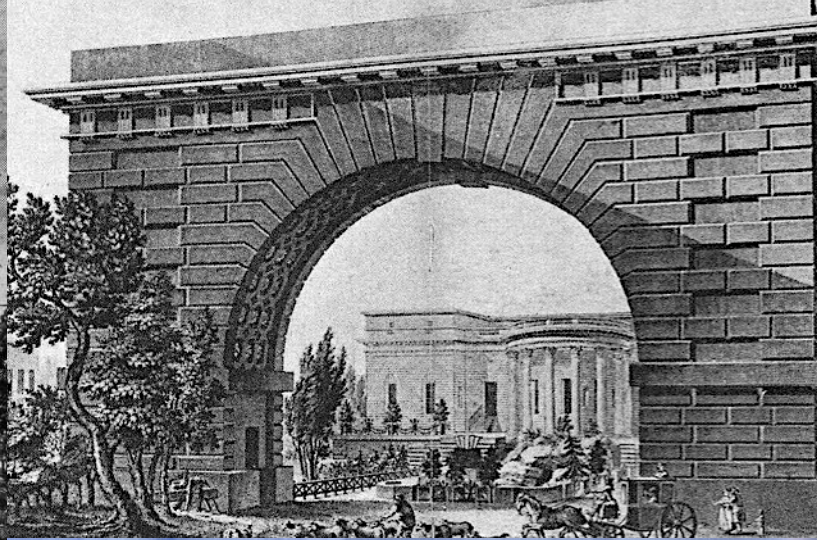


Etienne-Louis Boullée - Perspective View of the Interior of a Metropolitan Church, 1780/1781, Pen and black ink with gray & brown wash over graphite on laid paper with framing line in brown ink, overall: 59.4 x 83.9 cm. - National Gallery of Art, Patrons' Permanent Fund



Boullée cenotafio a piramide e museo.  
Già Piranesi aveva ingigantito la scala  
delle rovine romane per sottolineare  
la grandezza antica rispetto alla  
meschinità contemporanea, ora  
Boullée ingigantisce le forme semplici e  
simboliche eterne nella visione di una  
architettura sovrumana e visionaria.  
Nelle architetture realizzate Hotel  
Alexandre, Paris 1763-66 dimostra una  
elegante originalità





Hotel Guimard  
1773-76, hotel  
Thélusson 1778-81,  
chateau Bénouville  
1768

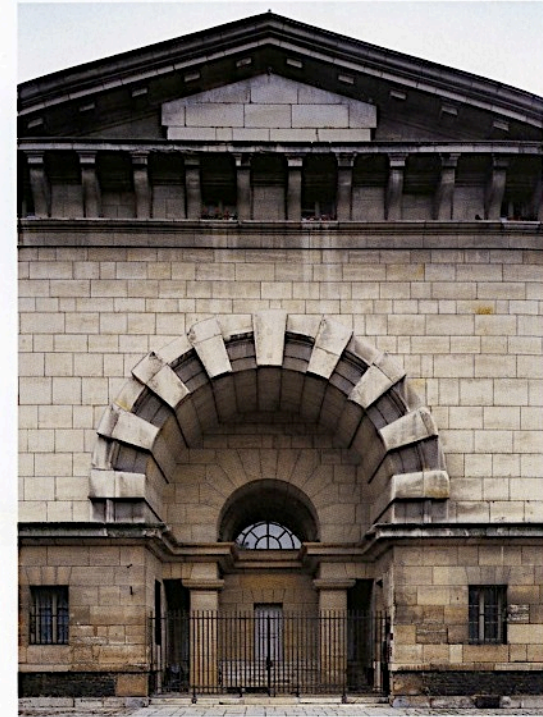
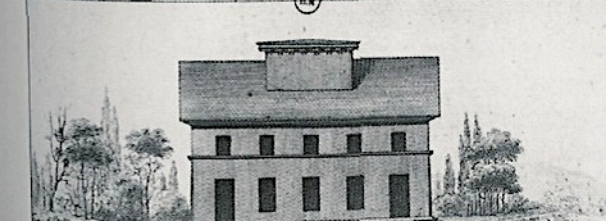
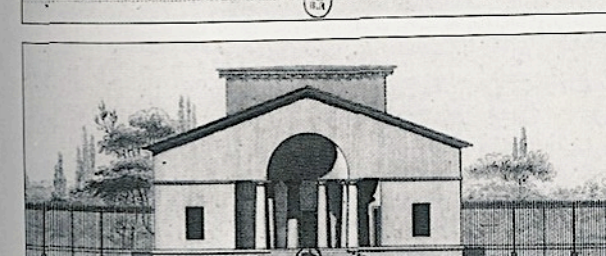
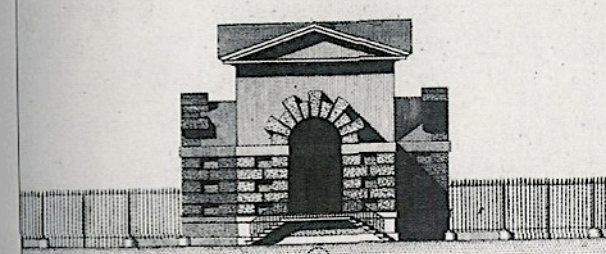
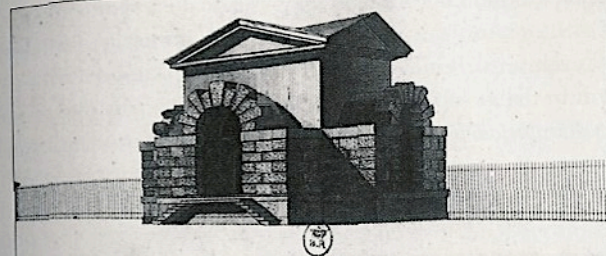
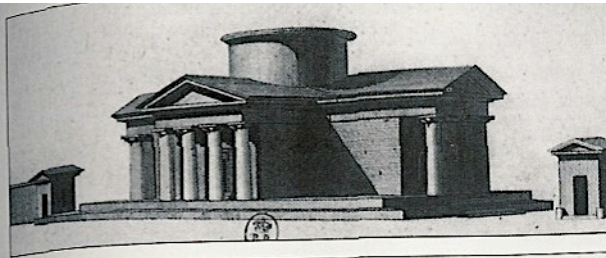
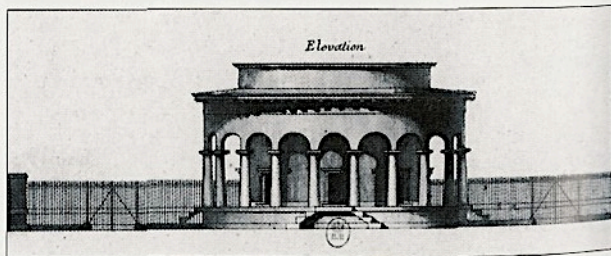
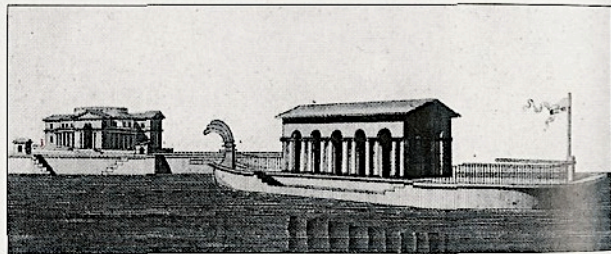
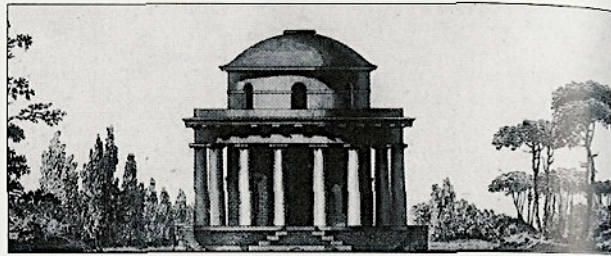
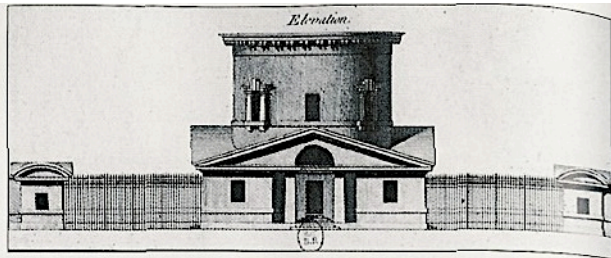


Claude-Nicolas Ledoux saline di Arc et Senant  
1775-80. per la prima volta una fabbrica diventa  
architettura parlante monumentale ed eloquente



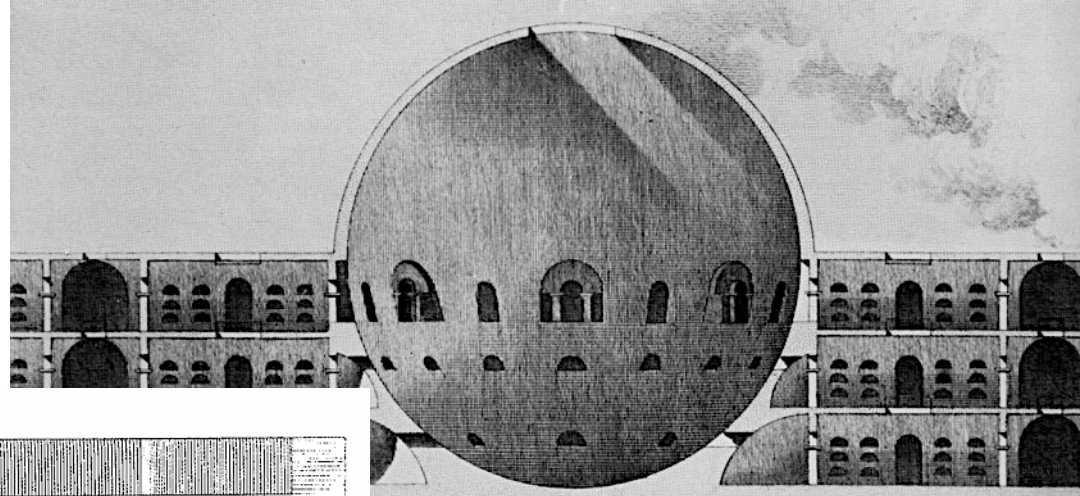
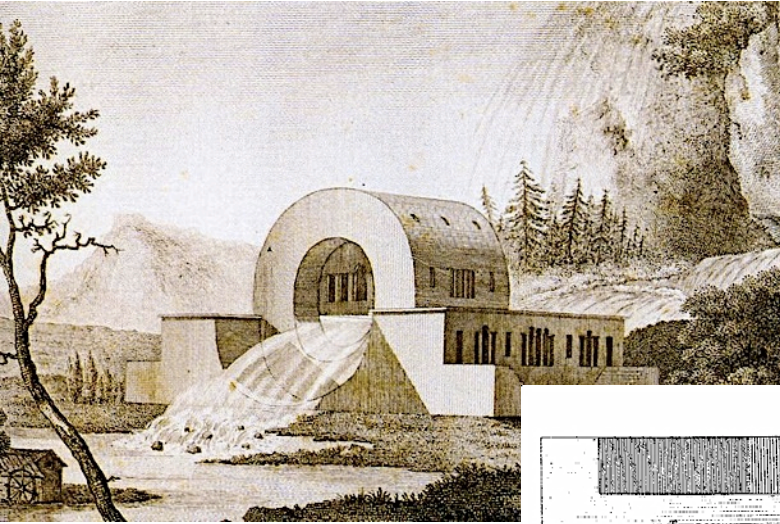


Claude-Nicolas Ledoux barriera du Throne e Villette 1784.

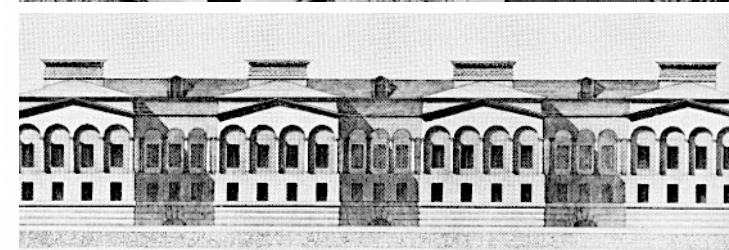
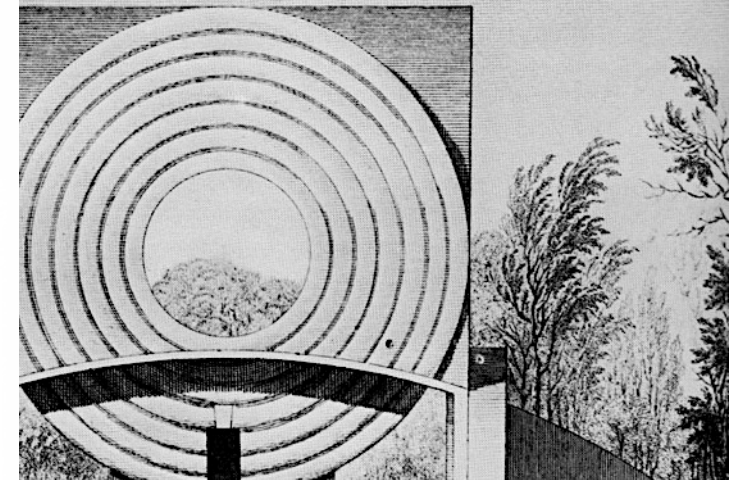
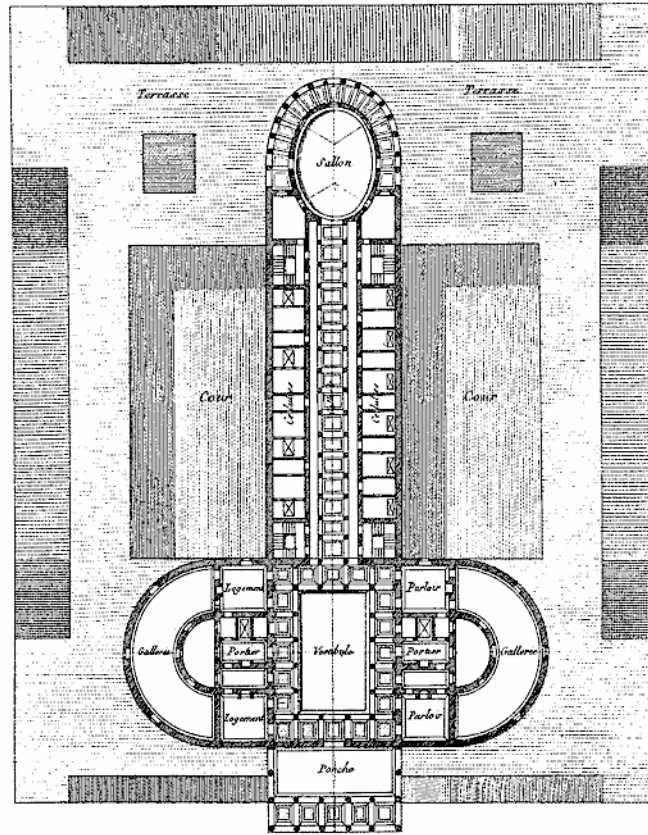


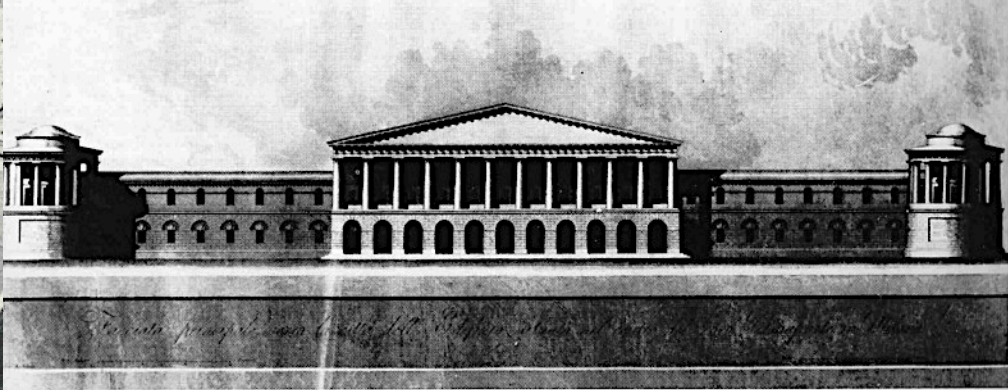
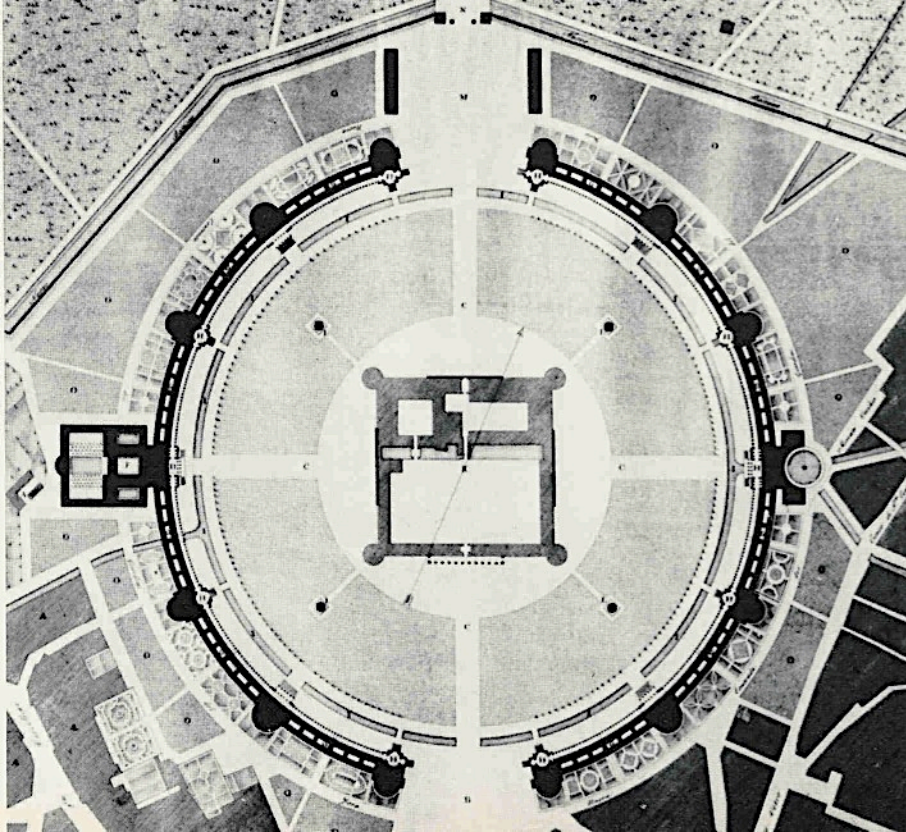


Claude-Nicolas Ledoux *L'architecture considérée sous les rapport de l'art, des moers et de la legislation*, 1804

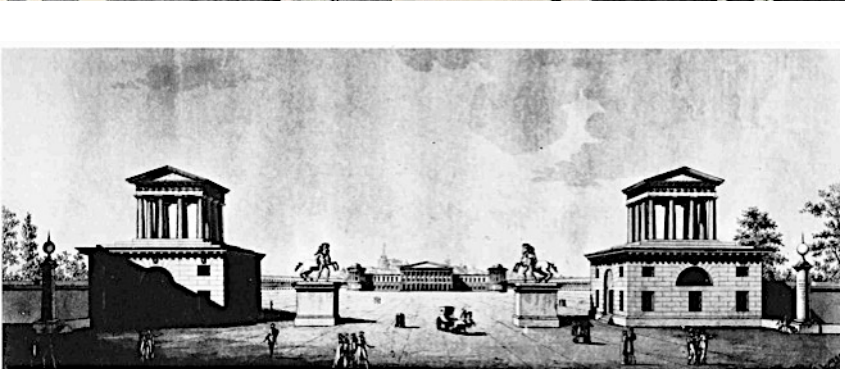


Architettura parlante,  
funzione simbolica  
piuttosto che utilitaria,  
geometrie impossibili e  
paradossali, tipi di edifici





Antolini foro Buonaparte Milano 1800



GianAntonio Selva Monumento a Napoleone 1807

