

A Letter from Dr. Robert Plot of Oxford, to Dr. Martin Lister F. of the R. S. concerning the use which may be made of the following History of the Weather, made by him at Oxford through out the year 1684.
Sir.

IT would be needless to acquaint you with the Universal approbation, your new and easy invention of observing the rise and fall of the *Mercury* in the *Barometer* (by parallel lines drawn from every decimal part of each month of its whole extent,) was received in our *Philosophical Society at Oxford*: since I here send you the *Observ.* of a full year made by their order, not only of the rise, and fall of the *Quicksilver*, (markt by the wandering prickt line in the figure belonging to each month,) and the weather; but also how the wind stood each day throughout the whole year, except the Month of *Jan.* which was not thought of at first; though (if we respect the use of such *Observations*,) as material a part as any whatever: for when once we have procured fit persons enough to make the same *Observations* in many foreign and remote parts, how the winds stood in each, at the same time, we shall then be enabled with some grounds to examin, not only the coastings, breadth, and bounds of the winds themselves, but of the weather they bring with them; and probably in time thereby learn, to be forewarned certainly, of divers emergencies (such as heats, colds, dearths, plague, and other epidemical distempers,) which are now unaccountable to us; and by their causes be instructed for prevention, or remedies: thence too in time we may hope to be inform'd how far the positions of the planets in relation to one another, and to the fixt starrs, are concerned in the alterations of the weather, and in bringing and preventing diseases, or other calamities;

lamities; for by this means it is doubtless, that the Learned Dr. *Goad* of *London*, has arrived to that pitch of knowledg, he already has, in predicting weather, &c. i. e. by making such old *Almanacks* as this for many years, in stead of new ones; which if once faithfully done in divers parts of the world (as it is now happily begun,) we shall certainly obtain more real and usefull knowledg in these matters in a few years, than we have yet arrived to, in many Centuries: which no question was the opinion of the industrious *Walter Merle* Fellow of *Merton Coll.* who thus observed the weather here at *Oxford* every day of the month, seven years together viz. from *Jan. 1337* to *Jan. 1344*; the MS. Copy of which *Observations* are yet remaining in the *Bodleian Library*; and doubtless 'twas some such consideration as this, that moved *Erasmus Bartholin* to make *Observations* of the weather every day of the month through the whole year 1671 which are printed *inter Acta Medica Tho Bartholini*. Now Sir if these worthy *Gent.* thought it worth their while, laboriously to make such *Observations* without the helps that you have afforded us; how supine had we been, if we had forborn to prosecute it; I am sure I could not have thought my self otherwise, had I neglected it, after I had received the commands of so judicious a *Society*; and the rather because then too, I should have rudely slighted an *Invention* of yours, who have always afforded me the inestimable Character of

Your most faithfull
Freind Rob. Plot.

Observations of the Wind, Weather, and height of the Mercury in the Barometer, throughout the year 1684; taken after Dr. Lister's method, in the Musæum Ashmoleanum, at the request of the Philosophicall Society of Oxford; by Robert Plot, LLD.

A Scheme of the weather at Oxford; January; 1684.

| <i>Day.</i> | <i>Weather.</i> |
|-------------|---|
| 1 | hard, frost and fair. |
| 2 | frosty, but yielding a little towards night. |
| 3 | rimy frost. |
| 4 | hard frost, and fair. |
| 5 | hard frost, and fair. |
| 6 | hard frost, and fair. |
| 7 | hard frost, but a little yielding at night. |
| 8 | rimy frost morn. fair all day, windy night. |
| 9 | frost, but snow at night. |
| 10 | cold raw weather toward noon, rain toward night. |
| 11 | moist thawing weather. |
| 12 | close thawing weather. |
| 13 | moist, close weath. a small frost at night. |
| 14 | close frosty weather. |
| 15 | close frosty weather. |
| 16 | close frosty weather, at night windy. |
| 17 | frost, at night snow. |
| 18 | snow, and wind. |
| 19 | close sharp weather. |
| 20 | close <i>ut supra</i> but a little yield. at night. |
| 21 | mild frost, and fair. |
| 22 | hard frost, snow at night a little. |
| 23 | hard frost. |
| 24 | hard frost, and fair. |
| 25 | hard frost, and snow. |
| 26 | frost, a little snow. |
| 27 | frost, a little thaw about noon. |
| 28 | frost, and fair. |
| 29 | frost, a small thaw all the afternoon. |
| 30 | hard frost, and fair. |
| 31 | frost, and fair. |

A Scheme of the Wind, & Weather at Oxford; February; 1683.

| <i>Day.</i> | <i>Wind.</i> | <i>Weather.</i> |
|-------------|--------------|--|
| 1 | NE | frost, and fair. |
| 2 | NE | frost, a little thaw at night. |
| 3 | due E | frost, and fair. |
| 4 | due S | close wea. & a little thaw & Snow at ni. |
| 5 | S W | thawing weather, wind & rain at night. |
| 6 | due W | fair clear weather. |
| 7 | due W | close thawing rainy weather. |
| 8 | N & by W | close weather. |
| 9 | due S | fair in the morn. rain & snow at night. |
| 10 | due S | close wet weather. |
| 11 | due S | fair morning, wet at night & windy. |
| 12 | SSW | close morning, fair at night. |
| 13 | N & by W | close morning, fair at night. |
| 14 | W & N | rain morning, fair at night. |
| 15 | N W | fair weather. |
| 16 | due S | rainy morning, close at night. |
| 17 | S W | close moist weather. |
| 18 | S W | rainy and wind. |
| 19 | due W | moist morning, fair afternoon. |
| 20 | W S W | open fair weather. |
| 21 | S W | close weather, windy. |
| 22 | W S W | close rainy weather. |
| 23 | due W | wet morning, fair afternoon. |
| 24 | W & by S | fair morning, close Evening. |
| 25 | S W | fair morning, close evening. |
| 26 | S W | wet morning, close evening. |
| 27 | S E | wet morning, fair evening. |
| 28 | N E | close frosty weather. |
| 29 | E & by S | frosty clear weather. |

A Scheme of the Wind & weather at Oxford; March; 1683.

| <i>Day.</i> | <i>Wind.</i> | <i>Weather.</i> |
|-------------|--------------|---------------------------------|
| 1 | SE | close frosty cold weather |
| 2 | NE | close cold weather |
| 3 | N & by W | close frosty weather. |
| 4 | N & by W | close cold weather, |
| 5 | due N | close morning, snow evening |
| 6 | NE | close cold weather. |
| 7 | NNE | frost fair and windy. |
| 8 | NNE | frost, close and windy. |
| 9 | E & by N | frost and high winds |
| 10 | ENE | close frosty cold weather. |
| 11 | N & by W | frost and fair, close at night. |
| 12 | due N | frosty, snowy, windy weather. |
| 13 | N & by E | frost morning, fair night. |
| 14 | N & by E | frost, snow & wind. |
| 15 | NNE | snow & wind, |
| 16 | NNE | snow and rain. |
| 17 | N & by E | close moist weather. |
| 18 | W & by N | close morning fair night. |
| 19 | NE | cold changeable weather. |
| 20 | NNW | snow and cold high winds. |
| 21 | NE | close but fair weather. |
| 22 | NE | fair weather, but cold. |
| 23 | E & by N | cold fair weather. |
| 24 | E & by N | cold fair weather. |
| 25 | E & by N | cold fair weather. |
| 26 | due E | cold fair weather. |
| 27 | due E | cold close weather. |
| 28 | S & by W | warm moist weather. |
| 29 | S & by W | wind and rain. |
| 30 | S & by W | close fair weather. |
| 31 | due S | fair calm weather. |

A Scheme of the Wind, and Weather at Oxford; April; 1684.

| <i>Day.</i> | <i>Wind.</i> | <i>Weather.</i> |
|-------------|--------------|---|
| 1 | N & W | fair sun-shine weather. |
| 2 | W & by N | rain i'th morning, fair evening. |
| 3 | S & by W | fair morning, wind and rain at night. |
| 4 | S & by W | close moist weather. |
| 5 | S W | rainy weather. |
| 6 | due W | fair morning, wet at night. |
| 7 | due W | fair weather. |
| 8 | S W | close weather. |
| 9 | N W. & N | close weather but fair. |
| 10 | N E | close fair weather. |
| 11 | due E | rain and wind moderate |
| 12 | N & W | close cold weather |
| 13 | N & by E | fair sun-shine weather. |
| 14 | E N E | fair morning, close evening. |
| 15 | NE & by E | close cold weather. |
| 16 | E & by N | close cold weather. |
| 17 | E & by N | close cold weather. |
| 18 | S & W | variable dry weather. |
| 19 | due S | moist morning, wet night. |
| 20 | SE & SW | close warm weather. |
| 21 | S E | fair sun-shine weather. |
| 22 | S. N. E | fair morn. inclinable to rain at night. |
| 23 | S W | rainy morning, fair evening. |
| 24 | S W | fair sun-shine weather. |
| 25 | S W | fair sun-shine weather. |
| 26 | due S | close dry weather. |
| 27 | S W | fair sun-shine weather. |
| 28 | S W | close dry weather. |
| 29 | S W | close dry weather. |
| 30 | due S | rain morning, fair evening |

A Scheme of the Wind, and Weather at Oxford ; May ; 1684.

| <i>Day.</i> | <i>Wind.</i> | <i>Weather.</i> |
|-------------|--------------|--|
| 1 | SSW | Variable weather. |
| 2 | due W | fair weather. |
| 3 | SSW | close fair weather. |
| 4 | WSW | close fair weather. |
| 5 | WSW | moist morning, fair evening. |
| 6 | WSW | close fair weather. |
| 7 | WSW | close morning, rain at night. |
| 8 | SSE & SW | fair warm weather. |
| 9 | NW | close fair weather. |
| 10 | due W | close fair weather. |
| 11 | due W | close fair weather. |
| 12 | due W | misty morning, fair evening. |
| 13 | S & W | wet morning, fair evening. |
| 14 | SW | close weather, some rain. |
| 15 | due N | close fair weather, some wind. |
| 16 | NNE | windy morning, close evening. |
| 17 | NE | close dry weather. |
| 18 | NE | close fair weather. |
| 19 | NE | fair sun-shine weather. |
| 20 | E & by N | close fair weather, some wind. |
| 21 | NE | warm morning, close evening. |
| 22 | NE | close, fair, and windy. |
| 23 | NE | close, fair, and windy. |
| 24 | NE | close morning, fair sun-shine evening. |
| 25 | NE | close fair weather. |
| 26 | SE | fair sun-shine weather. |
| 27 | NE | close fair weather. |
| 28 | E & by N | fair sun-shine weather. |
| 29 | SW | wind and rain. |
| 30 | due W | close fair weather. |
| 31 | SW | close weather, a little rain at night. |

A Scheme

A Scheme of the Wind, and Weather at Oxford ; June ; 1684.

| <i>Day.</i> | <i>Wind.</i> | <i>Weather.</i> |
|-------------|--------------|------------------------------------|
| 1 | S W | close morning, fair evening. |
| 2 | due W | close morning, rainy evening. |
| 3 | due W | fair morning, rainy evening. |
| 4 | due W | close fair weather. |
| 5 | due W | close fair weather. |
| 6 | due W | close fair weather. |
| 7 | W, & N | close fair weather. |
| 8 | due N | fair sun-shine weather. |
| 9 | due N | close fair weather. |
| 10 | NE | fair sun-shine weather. |
| 11 | due E | fair sun-shine weather. |
| 12 | due E | fair sun-shine weather. |
| 13 | ESE | fair sun-shine weather. |
| 14 | ESE | fair sun-shine weather. |
| 15 | ESE | fair sun-shine dry weather. |
| 16 | ESE | fair sun-shine hot weather. |
| 17 | ESE | fair sun-shine hot weather. |
| 18 | E by N | sun-shine morning, cloudy evening. |
| 19 | E by N:SSW | sun-shine hot weather. |
| 20 | S by W | a little rain. cloudy. |
| 21 | SE: E SE | lowring. some rain. |
| 22 | NE | fair hot weather. |
| 23 | NE | hot. a muddy sky. |
| 24 | NE | sun-shine clear. |
| 25 | NE | sun-sh fair weather. |
| 26 | NE | sun-shine dry weather. |
| 27 | NE: E | very dry. |
| 28 | E: SE | hot lowring evening. |
| 29 | S: SW | sun-shine clear. |
| 30 | S W | cloudy, cool. |

A Scheme of the Wind, and Weather at Oxford, July, 1684.

| <i>Day.</i> | <i>Wind.</i> | <i>Weather.</i> |
|-------------|--------------|------------------------------------|
| 1 | SW. WNW | somewhat cloudy. |
| 2 | W | a little rain, fair. |
| 3 | SW | fair, but cloudy. |
| 4 | SW. W | close, some rain. |
| 5 | SW | sun-shine morning, gloomy evening. |
| 6 | SW | close. |
| 7 | WSW | cool. close. |
| 8 | SW | hazy. some rain. |
| 9 | W. NW | some rain. clear. |
| 10 | NW | clear sun-shine. |
| 11 | SW | rain. |
| 12 | W | some rain. fair evening. |
| 13 | W | a showr or two. |
| 14 | W: SW | cool close weather. |
| 15 | WSW | rain |
| 16 | W | cool close weather. |
| 17 | W | cool close weather. |
| 18 | N: W | fair sun-shine weather. |
| 19 | WSW | lowring cool weather. |
| 20 | W: NW | fair sun-shine weather. |
| 21 | W | fair sun-shine weather. |
| 22 | W | hot sun-shine weather. |
| 23 | W: S | hot sun-shine weather. |
| 24 | S: E | hot sun-shine weather. |
| 25 | E & by S | hot sun-shine weather. |
| 26 | E & by S. | hot, a little rain toward night. |
| 27 | W: N | hot sun-shine weather. |
| 28 | W | hot. thunder. rain. |
| 29 | NNE | cloudy, some rain. |
| 30 | NNE | fair sun-shine weather. |
| 31 | NE | hot sun-shine weather. |

A Scheme of the Wind, & Weather at Oxford; August; 1684.

| <i>Day.</i> | <i>Wind.</i> | <i>Weather.</i> |
|-------------|--------------|--|
| 1 | N. | warm sun-shine weather. |
| 2 | W. | cool fair weather. |
| 3 | S W | warm fair weather. |
| 4 | due S | hot sun-shine weather. |
| 5 | S W & by S | hot sun-shine weather. |
| 6 | S W & by S | warm sun-shine weather. |
| 7 | due S | rainy morning, fair evening, |
| 8 | due S | close fair weather. |
| 9 | due W | fair sun-shine weather. |
| 10 | due N | fair sun-shine weather. |
| 11 | S W | fair morn. inclinable to rain at night |
| 12 | due W | rainy morn. the same in the evening. |
| 13 | due W | fair sun-shine weather. |
| 14 | due W | fair sun-shine weather. |
| 15 | W | fair sun-shine weather. |
| 16 | W:N | a showr. sun-shine weather. |
| 17 | N W | sun-shine morning, cloudy evening. |
| 18 | NN W:N | a muddy sky in the morn. f. sh. even. |
| 19 | N. S W | fair sun-shine weather. |
| 20 | SS W | hot sun-shine weather. |
| 21 | SS W | hot sun-shine weather. |
| 22 | S W | fair sun-shine weather. |
| 23 | S W | hot sun-shine weather. |
| 24 | S W | hot sun-shine weather. |
| 25 | N | rain all day. |
| 26 | S W | rain at night. |
| 27 | N W | close; some rain. |
| 28 | S W | close weather. |
| 29 | SS W | close; rain at night. |
| 30 | due S | variable weather. |
| 31 | S & by E | close; some rain. |

A Scheme of the Wind & Weather at Oxford; September; 1684.

| <i>Day.</i> | <i>Wind.</i> | <i>Weather.</i> |
|-------------|--------------|--------------------------------------|
| 1 | S & by E | close, some rain. |
| 2 | due S | close, some rain, |
| 3 | S E. W | close, rain, thunder. |
| 4 | S E: S W | close, some rain. |
| 5 | due E | close morning, rain afternoon. |
| 6 | S S E | close, some rain. |
| 7 | N W | fair sun-shine weath. rain at night. |
| 8 | N W | fair close dry weather. |
| 9 | N W | sun-shine morning, close evening. |
| 10 | N W. N E | sun-shine morning, some rain. |
| 11 | W & by N | fair morning, close evening. |
| 12 | N W: N | fair morning, some rain at night. |
| 13 | N N W | rainy weather. |
| 14 | due N | fair sun-shine weather. |
| 15 | N & by E | fair sun-shine weather. |
| 16 | due N | close fair weather. |
| 17 | N W | close, and windy. |
| 18 | due N | fair, morn. some rain; fair again. |
| 19 | due N | fair morning, close evening. |
| 20 | due S | fair sun-shine weather. |
| 21 | S & by E | fair sun-shine weather. |
| 22 | due S | fair sun-shine weather. |
| 23 | S & by W | fair morning, close evening. |
| 24 | due W | fair sun-shine weather. |
| 25 | S & by W | changeable weather. |
| 26 | due S | changeable weather. |
| 27 | due S | rainy weather. |
| 28 | due S | close moist weather. |
| 29 | S W | close moist weather. |
| 30 | N W | close morning, sun-shine evening. |

A Scheme of the Wind, and Weather at Oxford; October 1684.

| <i>Day.</i> | <i>Wind.</i> | <i>Weather.</i> |
|-------------|--------------|-------------------------------------|
| 1 | N W | moist weather, some rain. |
| 2 | W. & by S | close weather, but fair. |
| 3 | S W | close morning; fair evening. |
| 4 | S & by W | close all day, rain at night. |
| 5 | W: N W | rainy morning, fair evening. |
| 6 | due W | rainy windy weather. |
| 7 | S & by W | rain all day. |
| 8 | N N W | rain morning, fair evening. |
| 9 | N: N N W | close fair weather. |
| 10 | N W | fair weather. |
| 11 | S W | windy rainy morning, fair evening. |
| 12 | S S W | close and some wind. |
| 13 | S S W | close, some rain. |
| 14 | S S W | rain, and wind. |
| 15 | S & by E | wind, and rain. |
| 16 | S S W | fair sun-shine weather. |
| 17 | S W | fair sun-shine weather. |
| 18 | W & by N | fair weather. |
| 19 | N W | close morn. fair sun-shine evening. |
| 20 | N W | fair weather. |
| 21 | due W | fair sun-shine weather. |
| 22 | due W | close fair weather. |
| 23 | due W | fair morning, wind & rain at night. |
| 24 | N W | wind, snow, & rain. |
| 25 | N W | close, cold, and windy. |
| 26 | N W | fair frosty weather. |
| 27 | N E | frost, and snow. |
| 28 | S: W: N | frost, and snow. |
| 29 | N: W | frosty cold weather. |
| 30 | N: W | snow, and wind |
| 31 | due N | cold thaw in the M. clear frosty E. |

A Scheme of the Wind, and Weather at Oxford; Novem.; 1684.

| <i>Day.</i> | <i>Wind.</i> | <i>Weather.</i> |
|-------------|--------------|--------------------------------------|
| 1 | S&by W. N | thaw, snow, frost. |
| 2 | N W:W. | frost morning, thaw afternoon. |
| 3 | S&by W:W | thawing weather all day. |
| 4 | N W | close, and windy. |
| 5 | N W. | close, and windy ; little frost. |
| 6 | due W. | fair weather, little frost. |
| 7 | N: S. | fair morning, rain evening. |
| 8 | E & by S | small rain all day. |
| 9 | S E. | misty moist weather. |
| 10 | due W. | rainy misty weather. |
| 11 | N W. | cloudy moist weather. |
| 12 | S W. | cloudy moist weather. |
| 13 | S W | cloudy, some sun-shine. |
| 14 | S W | close, a mist at night. |
| 15 | N W | frosty morning, close evening. |
| 16 | N W. | close morning, clear frosty evening. |
| 17 | N W: N. | hard frost and clear. |
| 18 | N. | hard frost, sun-shine. |
| 19 | S | close. snow. rain. |
| 20 | S | much rain. |
| 21 | W | warm sun-shine weather. |
| 22 | S | frost, rain. |
| 23 | S W | fair, somewhat warm. |
| 24 | W S W | some rain. |
| 25 | W N W | close. fair. |
| 26 | W | fair. warm. close. |
| 27 | N W | some rain. |
| 28 | N | cold. cloudy. rain. |
| 29 | N E | fair, but cloudy. |
| 30 | N | fair. |

A Scheme of the Wind, and Weather at Oxford; Decem. 1684.

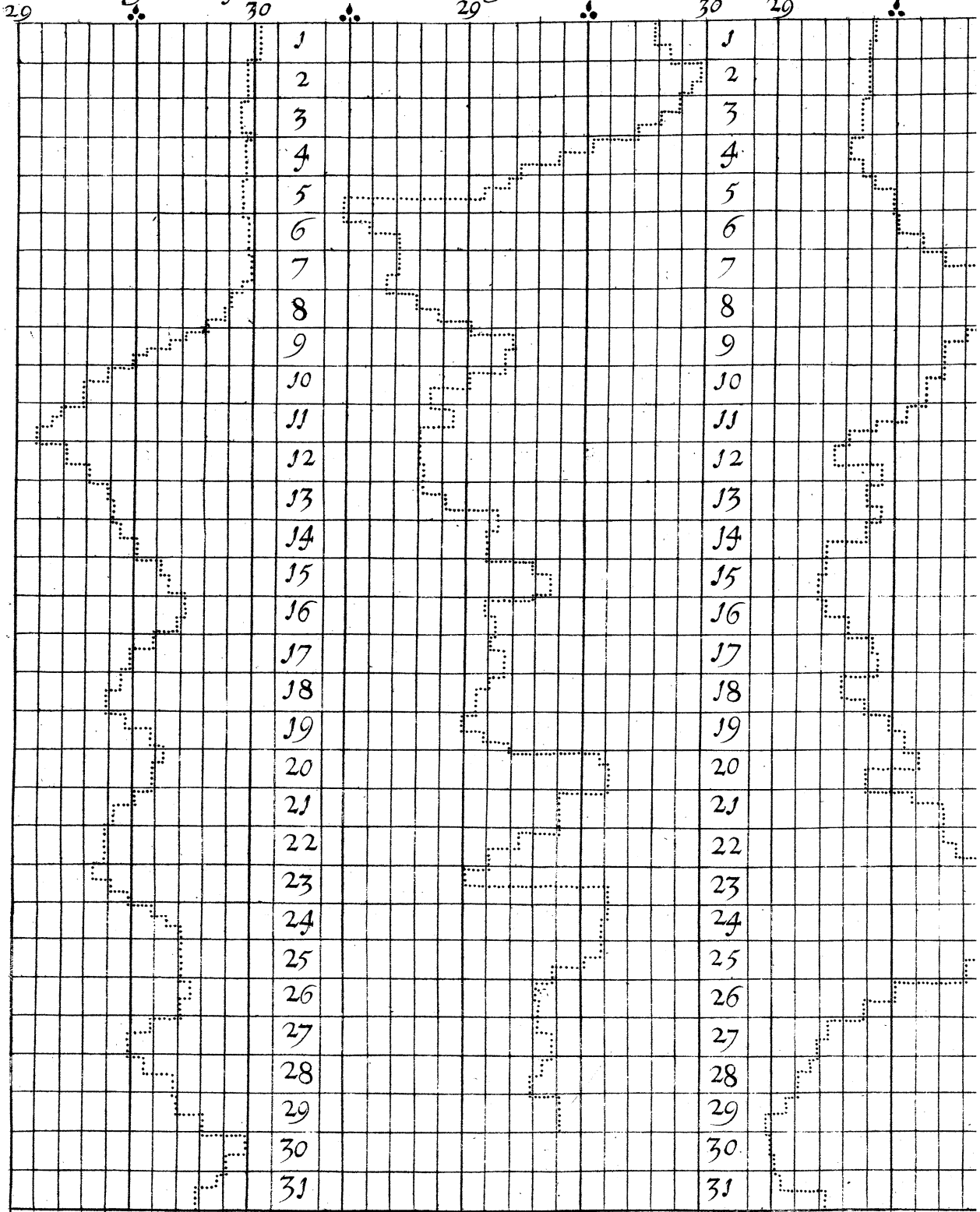
| <i>Day.</i> | <i>Wind.</i> | <i>Weather.</i> |
|-------------|--------------|-------------------------------|
| 1 | NNE | frost. sun-shine. |
| 2 | N | frost. sun-shine. |
| 3 | WSW | fnow. much small rain. |
| 4 | S | cloudy. some rain. |
| 5 | S | warm sun-shine weather. |
| 6 | SE:ENE. | misty. thick moist air. |
| 7 | ENE | frost. sun-shine weather. |
| 8 | ENE | moist cloudy air. |
| 9 | ENE | moist cloudy air. |
| 10 | ENE | thick, moist air. |
| 11 | ENE | fair but cloudy. |
| 12 | ENE | close. |
| 13 | ENE | a moist close air. |
| 14 | ESE | frost. clear sun-shine. |
| 15 | E:WSW | frost. cloudy. |
| 16 | NW:N | frost. cloudy. |
| 17 | W | frost. cloudy, a little snow. |
| 18 | N | frost. sun-shine. |
| 19 | W | thaw. cloudy. |
| 20 | NNW | rain. hail. snow. |
| 21 | W | frost. sun-shine. |
| 22 | N | frost. sun-shine. |
| 23 | E | hard frost. windy. |
| 24 | NE | frost. sun-shine. |
| 25 | N | frost. cloudy, much snow. |
| 26 | N | hard frost. sun-shine. |
| 27 | W | frost. sun-shine. |
| 28 | NW | rain all day. |
| 29 | NW | frost. rain at night. |
| 30 | WNW | some rain. fair evening. |
| 31 | E | fair. cloudy. |

Philosoph Trans

January 1683.

February 1683.

March 83.



July 84.

August 84.

September 84.

October 84.

Transact: Numb: 169.
8³/₄.
30 29

May 1684.
29

June 84.
29

| | | | | | | | | | | | | | |
|--|----|--|--|--|----|--|--|--|----|--|--|--|--|
| | 1 | | | | 1 | | | | 1 | | | | |
| | 2 | | | | 2 | | | | 2 | | | | |
| | 3 | | | | 3 | | | | 3 | | | | |
| | 4 | | | | 4 | | | | 4 | | | | |
| | 5 | | | | 5 | | | | 5 | | | | |
| | 6 | | | | 6 | | | | 6 | | | | |
| | 7 | | | | 7 | | | | 7 | | | | |
| | 8 | | | | 8 | | | | 8 | | | | |
| | 9 | | | | 9 | | | | 9 | | | | |
| | 10 | | | | 10 | | | | 10 | | | | |
| | 11 | | | | 11 | | | | 11 | | | | |
| | 12 | | | | 12 | | | | 12 | | | | |
| | 13 | | | | 13 | | | | 13 | | | | |
| | 14 | | | | 14 | | | | 14 | | | | |
| | 15 | | | | 15 | | | | 15 | | | | |
| | 16 | | | | 16 | | | | 16 | | | | |
| | 17 | | | | 17 | | | | 17 | | | | |
| | 18 | | | | 18 | | | | 18 | | | | |
| | 19 | | | | 19 | | | | 19 | | | | |
| | 20 | | | | 20 | | | | 20 | | | | |
| | 21 | | | | 21 | | | | 21 | | | | |
| | 22 | | | | 22 | | | | 22 | | | | |
| | 23 | | | | 23 | | | | 23 | | | | |
| | 24 | | | | 24 | | | | 24 | | | | |
| | 25 | | | | 25 | | | | 25 | | | | |
| | 26 | | | | 26 | | | | 26 | | | | |
| | 27 | | | | 27 | | | | 27 | | | | |
| | 28 | | | | 28 | | | | 28 | | | | |
| | 29 | | | | 29 | | | | 29 | | | | |
| | 30 | | | | 30 | | | | 30 | | | | |
| | 31 | | | | 31 | | | | 31 | | | | |

October 84.
30

November 84.
29

December 84.
30

84.

30

| | | |
|--|--|----|
| | | 1 |
| | | 2 |
| | | 3 |
| | | 4 |
| | | 5 |
| | | 6 |
| | | 7 |
| | | 8 |
| | | 9 |
| | | 10 |
| | | 11 |
| | | 12 |
| | | 13 |
| | | 14 |
| | | 15 |
| | | 16 |
| | | 17 |
| | | 18 |
| | | 19 |
| | | 20 |
| | | 21 |
| | | 22 |
| | | 23 |
| | | 24 |
| | | 25 |
| | | 26 |
| | | 27 |
| | | 28 |
| | | 29 |
| | | 30 |
| | | 31 |

4.

July 84.

August 84.

September 84.

October

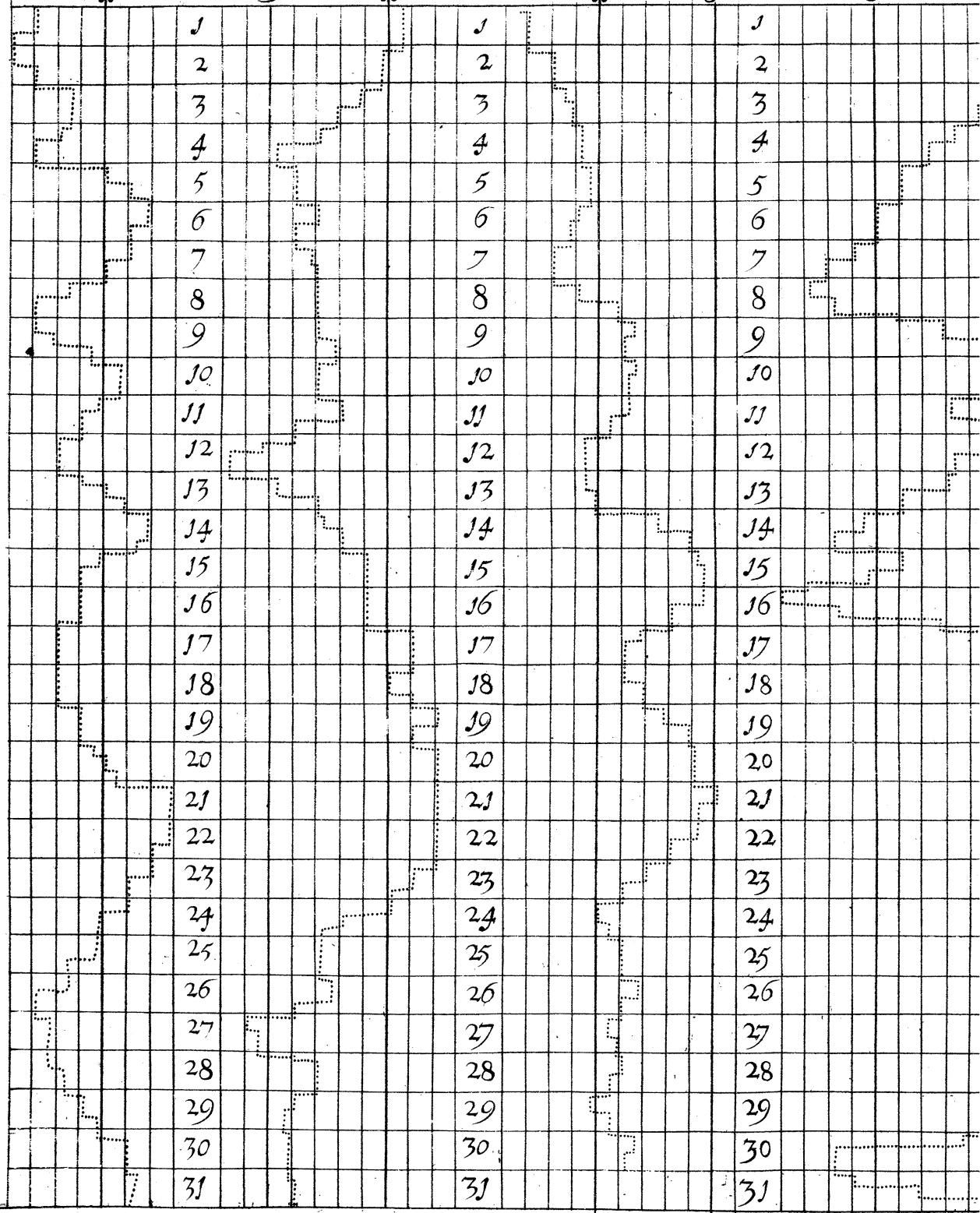


29



30

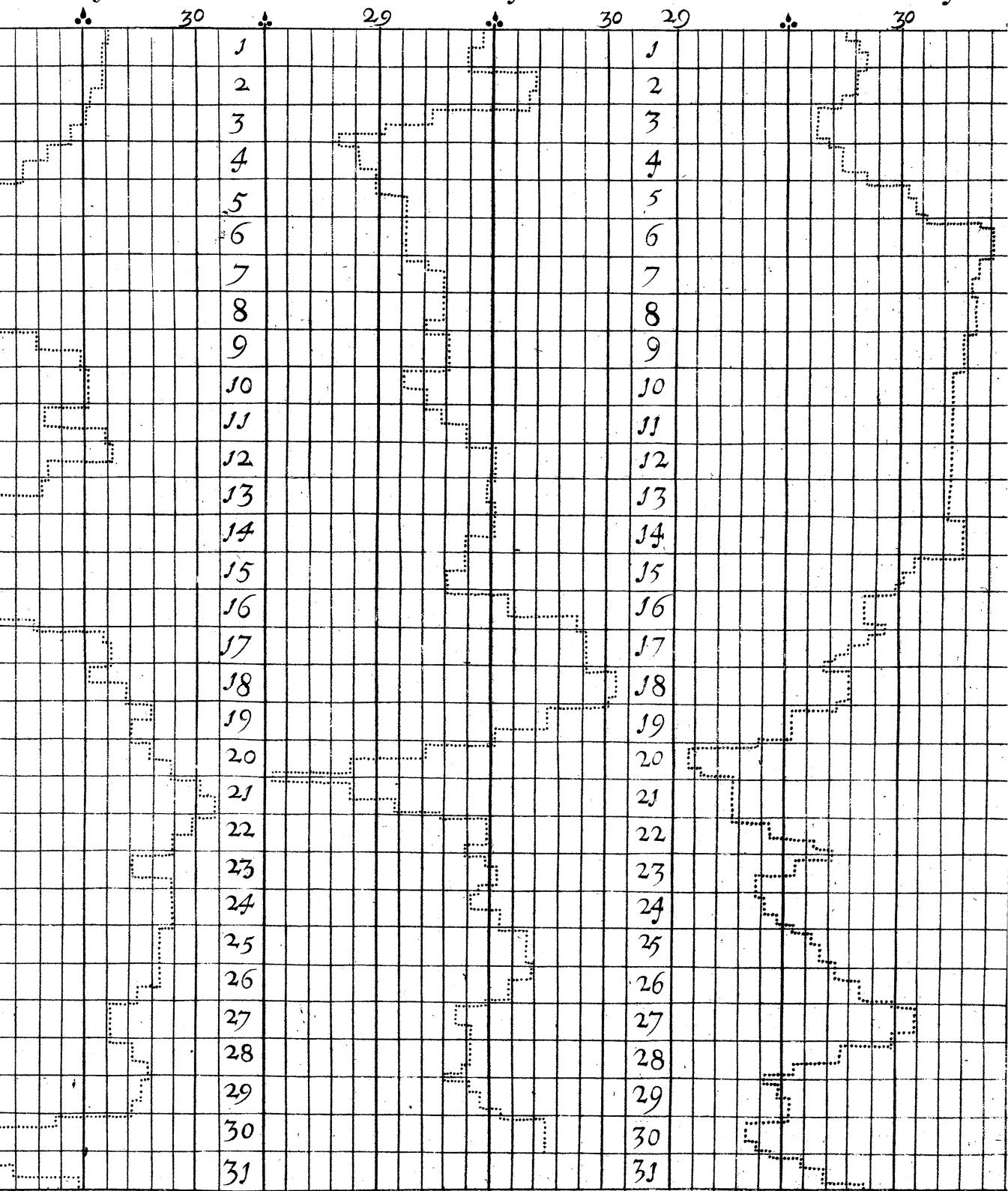
29



October 84.

November 84.

December 84.



4.

| | | | |
|--|--|--|----|
| | | | 1 |
| | | | 2 |
| | | | 3 |
| | | | 4 |
| | | | 5 |
| | | | 6 |
| | | | 7 |
| | | | 8 |
| | | | 9 |
| | | | 10 |
| | | | 11 |
| | | | 12 |
| | | | 13 |
| | | | 14 |
| | | | 15 |
| | | | 16 |
| | | | 17 |
| | | | 18 |
| | | | 19 |
| | | | 20 |
| | | | 21 |
| | | | 22 |
| | | | 23 |
| | | | 24 |
| | | | 25 |
| | | | 26 |
| | | | 27 |
| | | | 28 |
| | | | 29 |
| | | | 30 |
| | | | 31 |

Philosoph Transact. Numb: 169.

