

WIRING DIAGRAMS

Address:

Owner:

Contractor:

Designer:

Director:

CONTENT

main page.....	1
content.....	2
specifications.....	3
building plant.....	4
distribution board.....	5
stove circuit on building plant.....	6
16A sockets on building plant.....	7
underfloor heating on building plant.....	8
home appliances on building plant.....	9
lamps on building plant.....	10
short circuit calculation.....	11
materials.....	12

TECHNICAL CONDITIONS

introductory cable

NYM 5G6

Ground

TN-S

Voltage

230/400 Y+N

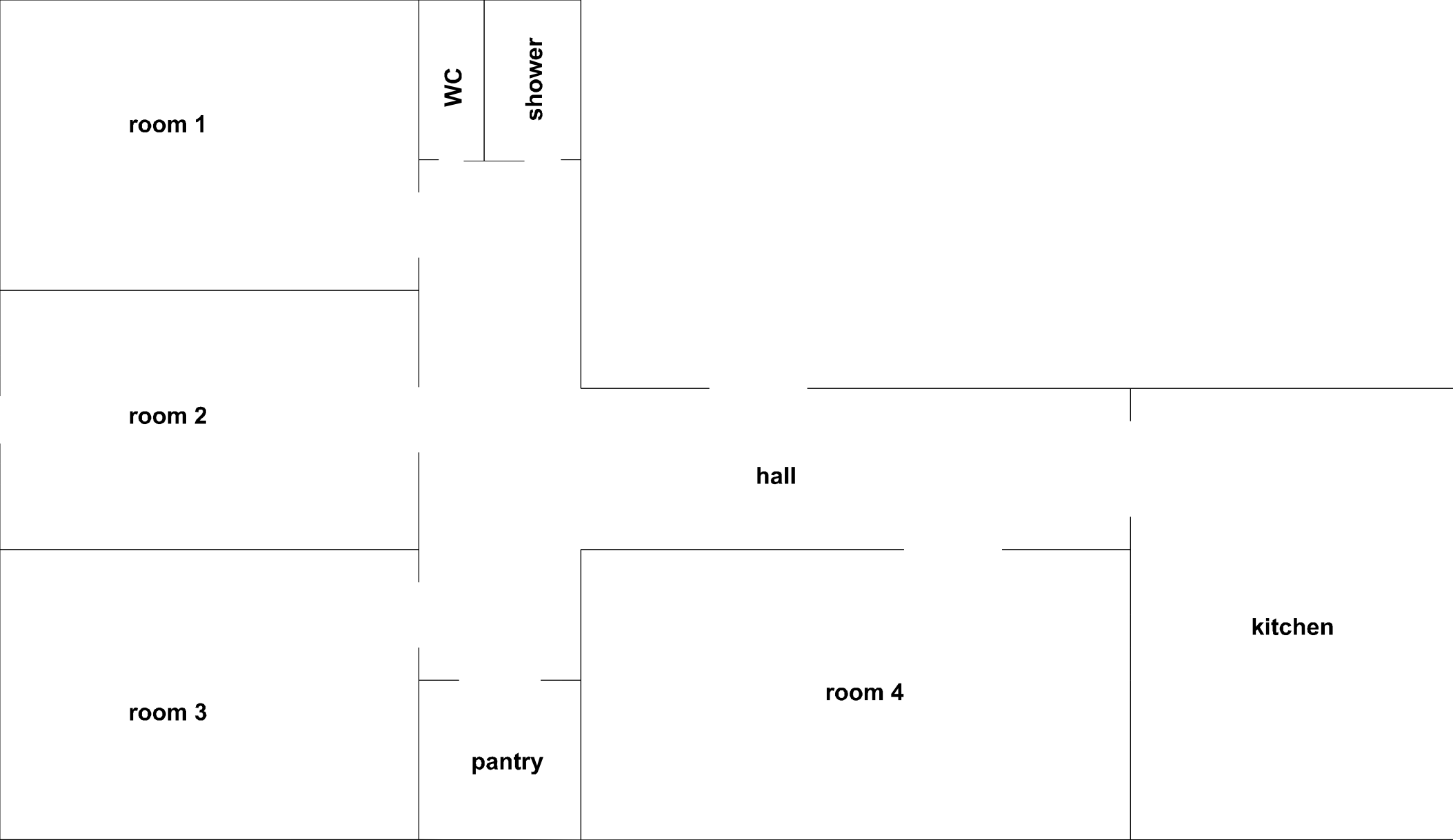
Power

17.2 KW

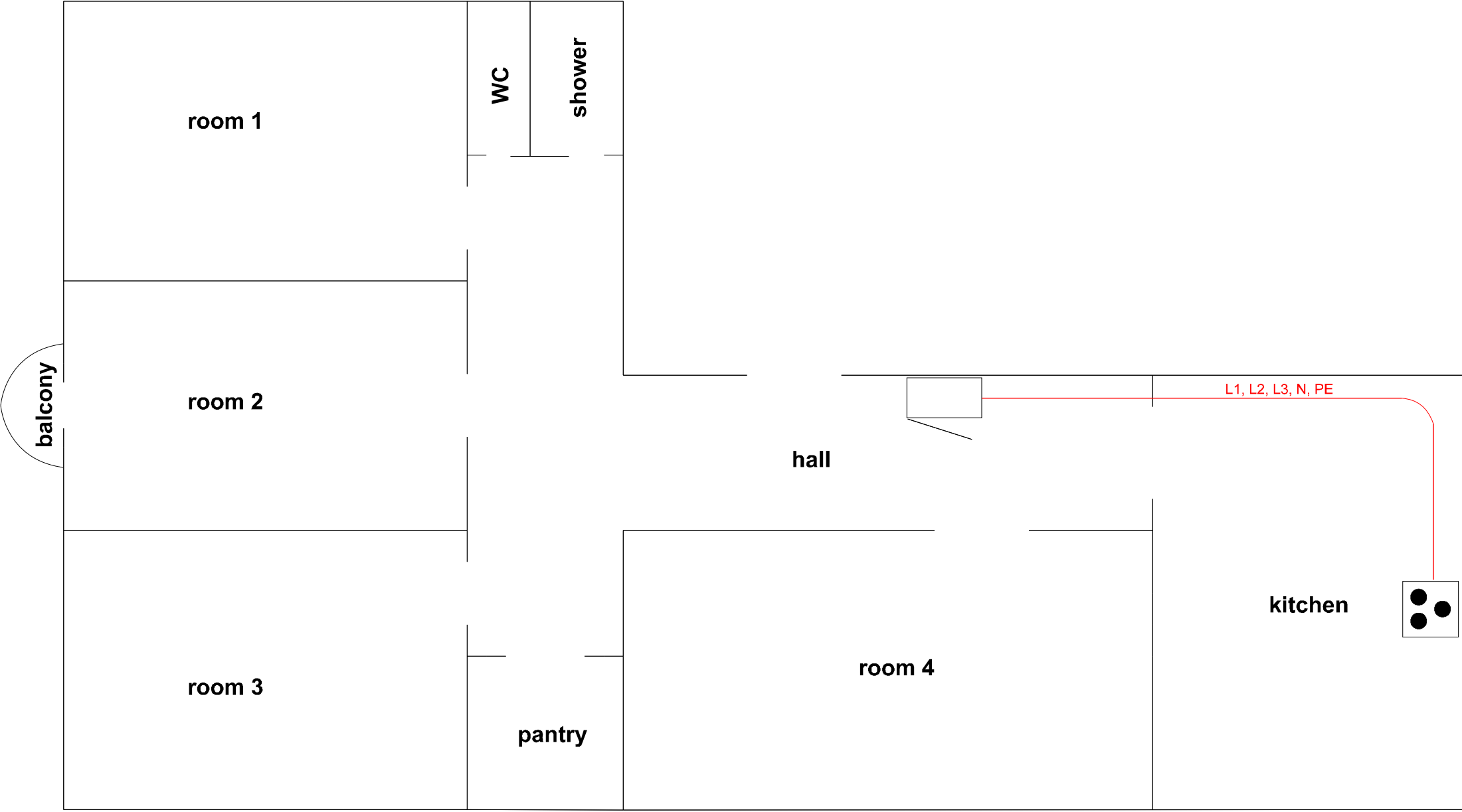
Main fuse

3x25A

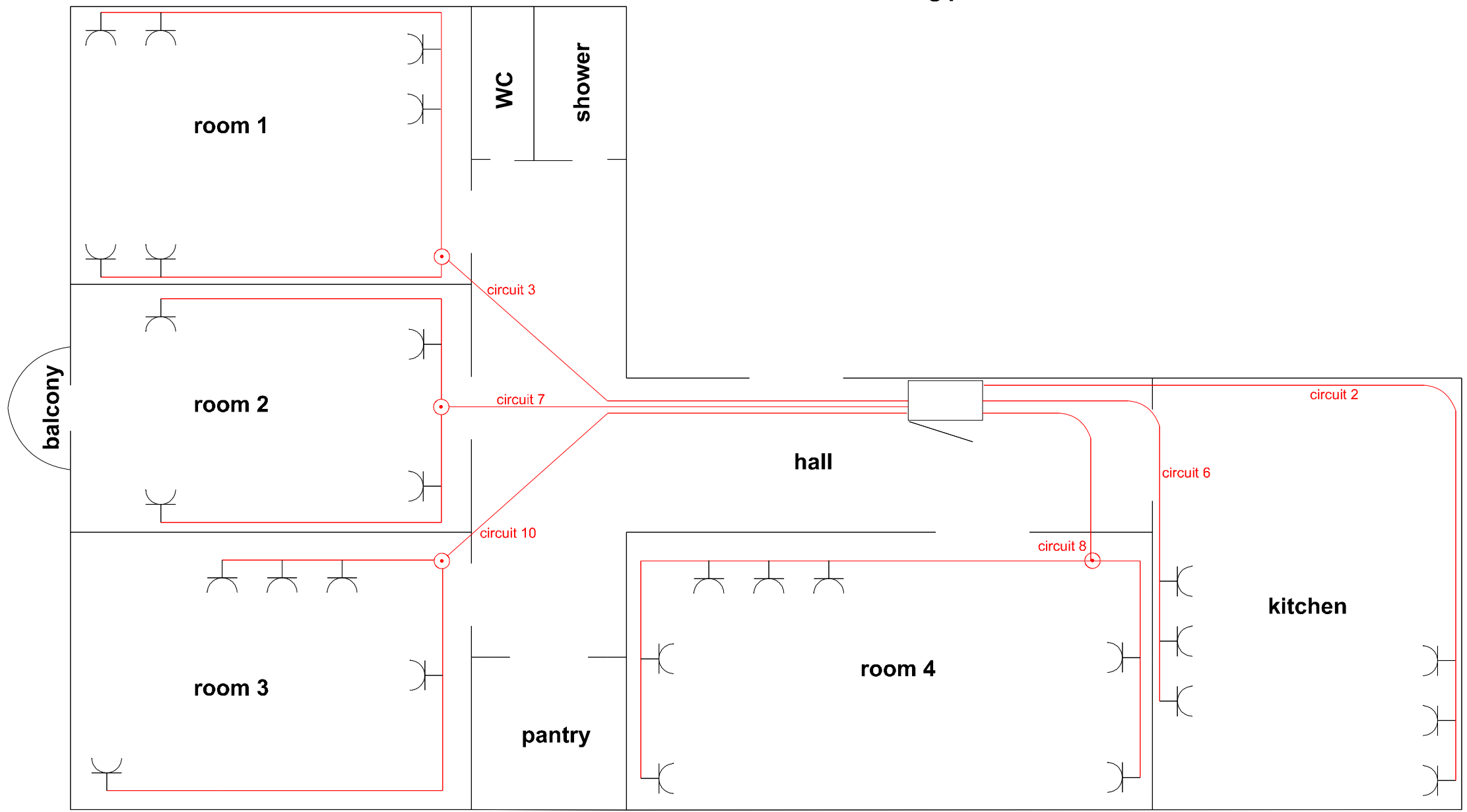
BUILDING PLANT



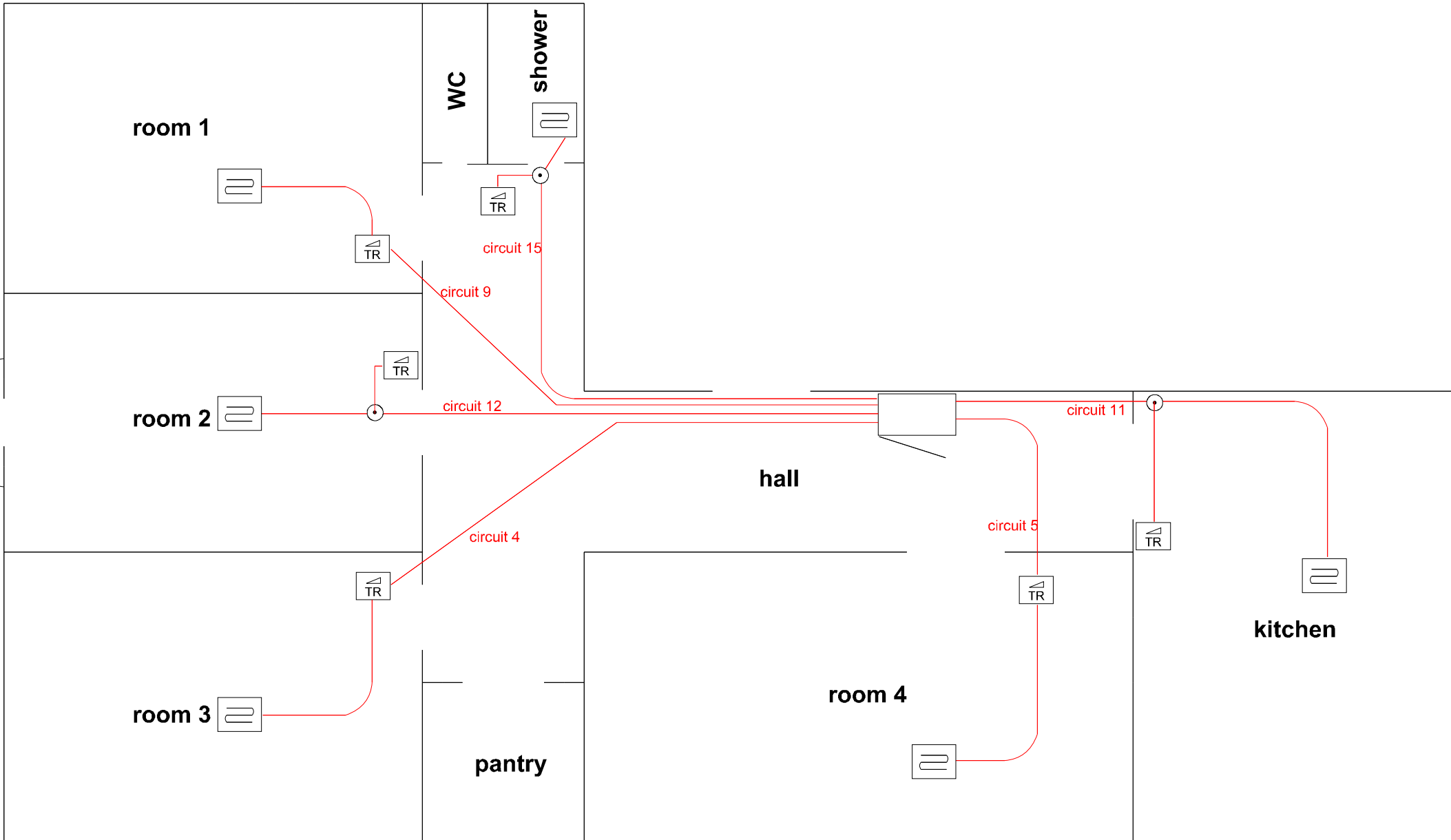
stove circuit on building plant



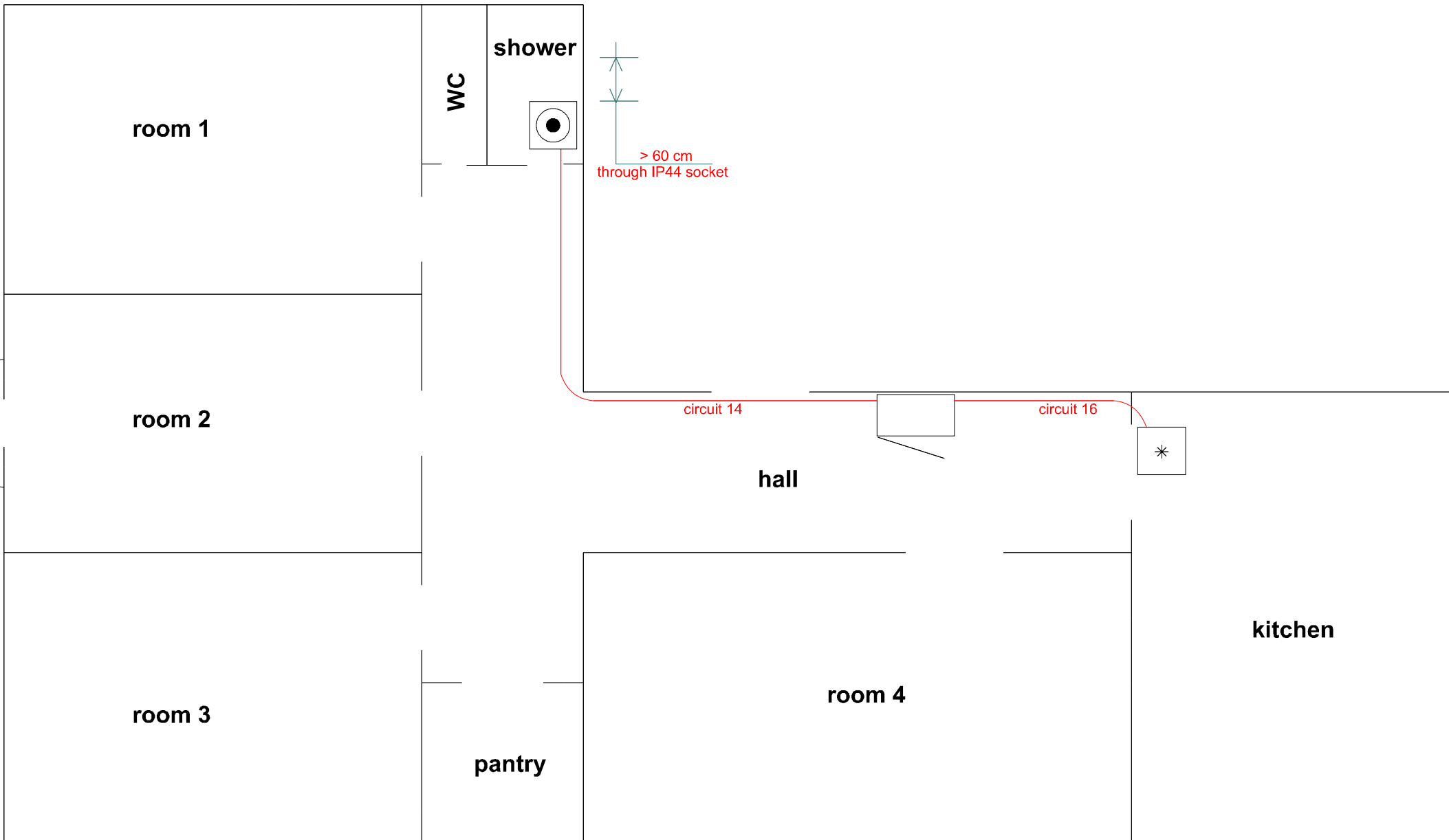
16A Schuko sockets on building plant



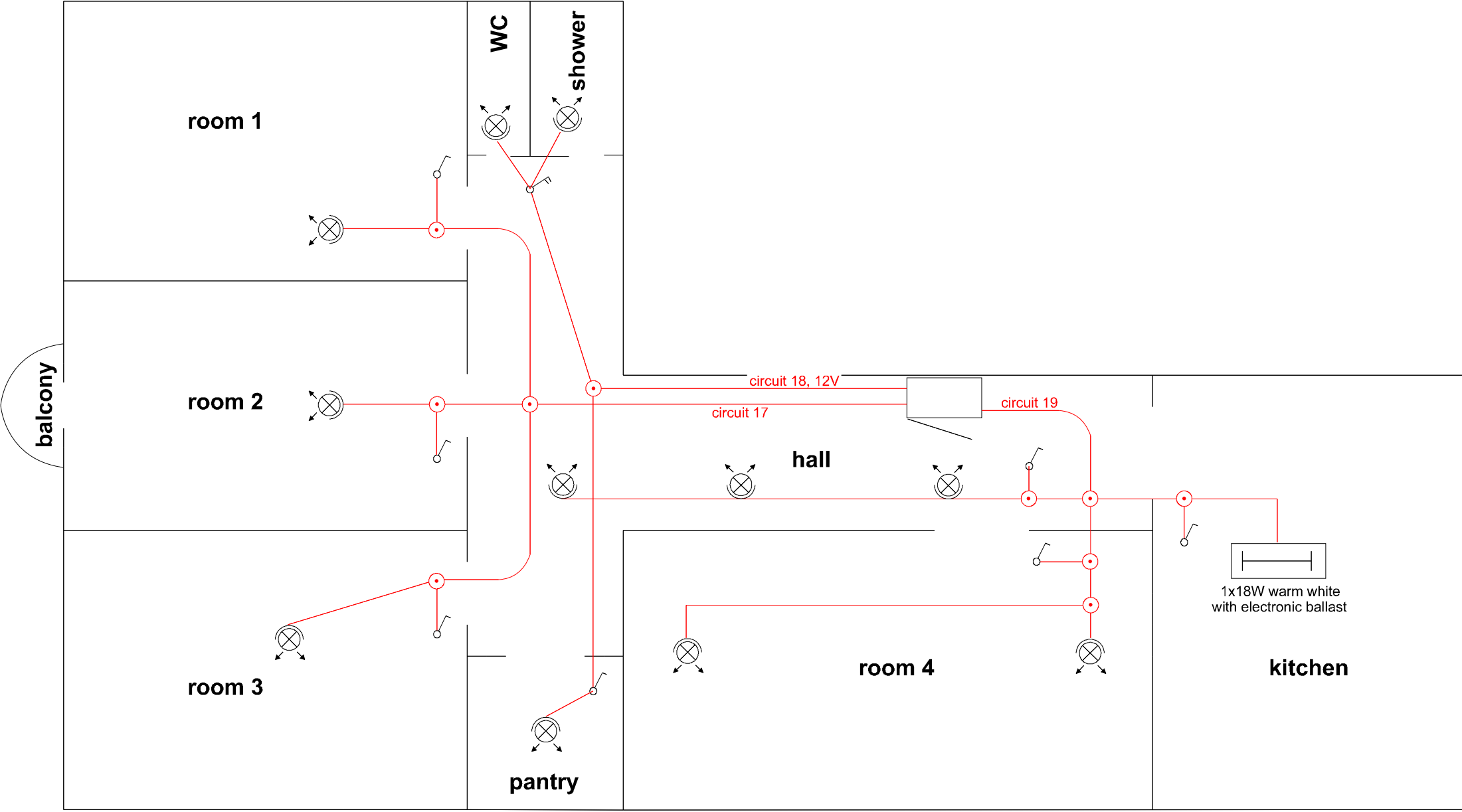
underfloor heating on building plant



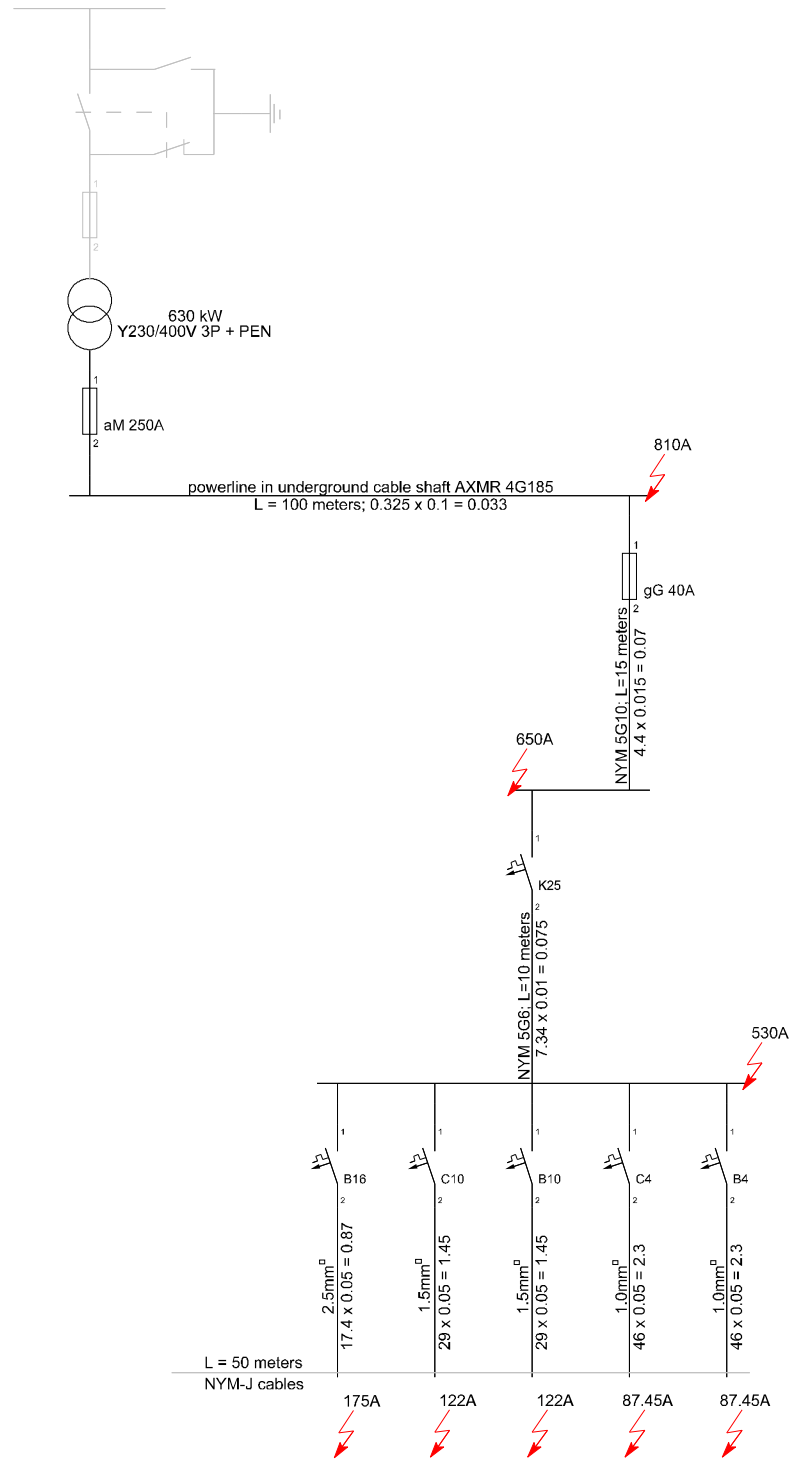
home appliances on building plant



lamps on building plant



SHORT CIRCUITS (FIRE SAFETY)



MATERIALS

Fuse box 48M, plastic	1
Load switch 3x25A 415V	1
Circuit breaker 3P for DIN rail B16	1
Circuit breaker 1P for DIN rail B16	6
Circuit breaker 1P for DIN rail C10	1
Circuit breaker 1P for DIN rail B10	5
Circuit breaker 1P for DIN rail C4	3
RCBO 2P for DIN rail C10 / 0.03A	3
RCD 4P for DIN rail 30mA/25A	1
RCD 2P for DIN rail 30mA/25A	1
10mm FORK busbar 3-phase	24M
Busbar N and PE	24x6 + 24x6
Busbar 14mm for DIN rail, blue	2
Transformer 230V to 12V for DIN rail	1
Cable NYM 5G6	15 meters
Cable NYM-J 5G2.5	20 meters
Cable NYM-J 3G2.5	450 meters
Cable NYM-J 3G1.5	450 meters
Cable NYM-J 3G1.0	200 meters
Copper wire, yellow-green, 4mm	100 meters
Junction boxes, diameter 68mm	48
Schuko sockets 16A IP20	35
Schuko sockets 16A IP44	2
Light switches 1 way	7
Light switches 2 way	1
Flexible conduit	*by installation process
Light fixtures	*by consumer's wishes
Other (nails, terminals)	1