

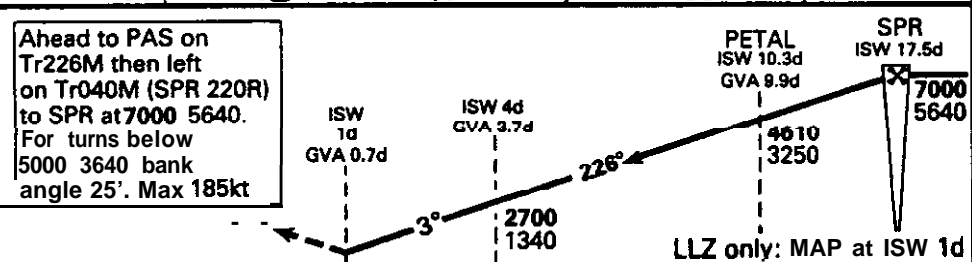
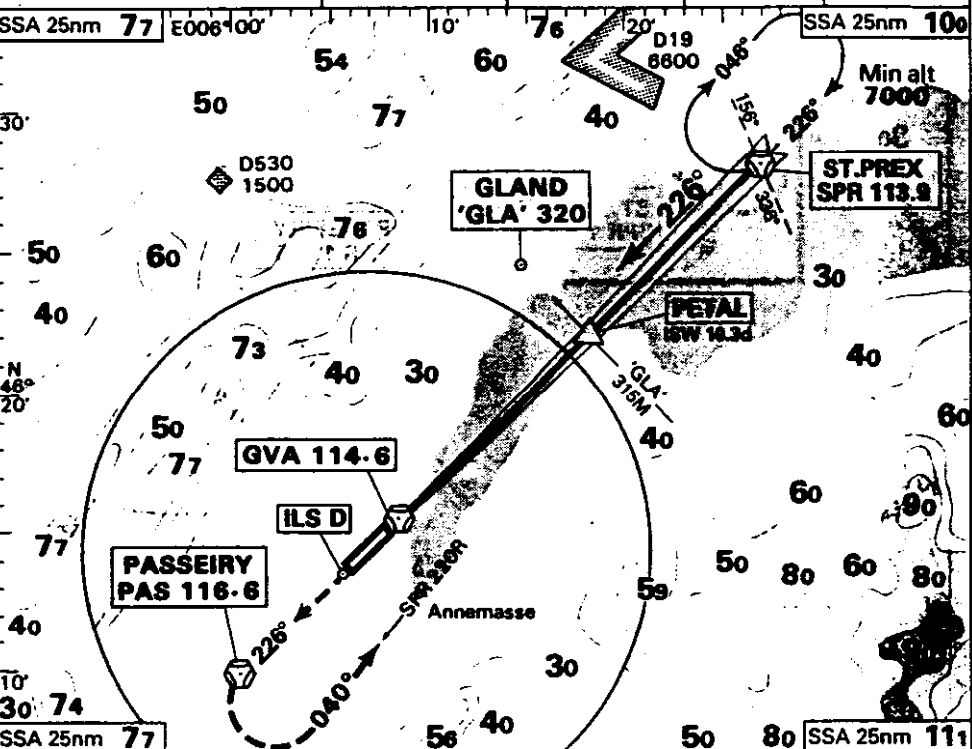
**DOCKET NO.: SA-517**  
**EXHIBIT NO. 2W**

**NATIONAL TRANSPORTATION SAFETY BOARD**  
**WASHINGTON, D.C.**

**INSTRUMENT APPROACH CHART COMPARISON**  
**(1 Page)**

Elev 1411 OCH See warnings box below

GENEVA Arrival 131.32 120.3 Tower 118.7 119.7 119.9 Ground Control Apron 121.75 121.85 ATIS 135.575 M2 ZW 15 JAN 98



Var GP at THR 59 THR Elev 1365/49hPa GP at ISW 1d 1770 410 LLZ only: MAP at ISW 1d

T.Lev	ATC	
T.Alt	7000	
kt	fpm	PETAL
200	1060	-
180	950	THR
160	850	3:45
140	740	4:17
120	640	5:00
100	530	6:00
80	420	7:30

- When R/W 05 LLZ is radiating disengage autopilot no later than 200ft.
- OCH: ILS C1 (Radio alt): A147, B157, C168, D181. (Radio alt): A87, B72, C84, D101. ILS C2 (Radio alt): A52, B63, C77, D93. (Radio alt autopilot): A51, B62, C76, D92 LLZ 410.

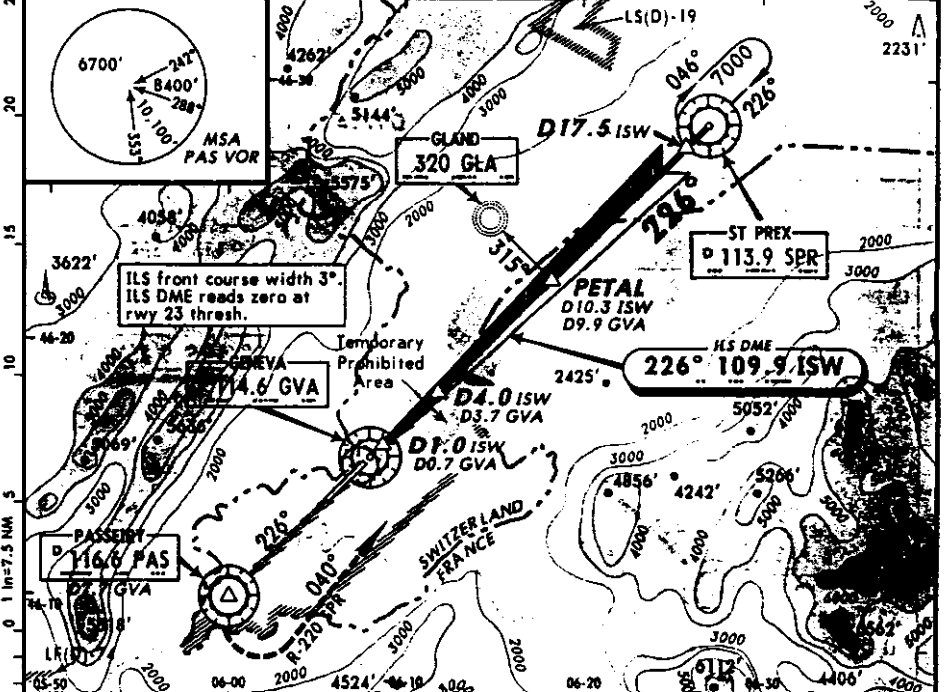
Advisory Alt/Hgt		
ISW DME		
10d	4620	3260
9d	4300	2940
8d	3980	2620
7d	3670	2310
6d	3350	1990
5d	3030	1670
4d	2710	1350
3d	2390	1030

Rev: ATIS.

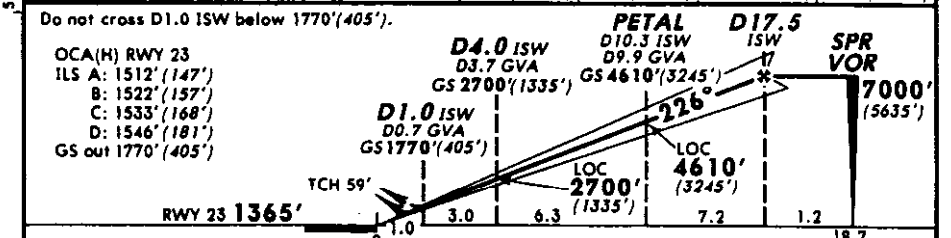
COINTRIN GENEVA ISW 109.9 ILS/DME 23

PATIS 135.57 GENEVA Arrival (R) 131.32 GENEVA Terminal (APP-VFR) 119.52 GENEVA Tower 118.7 119.7 Ground 121.9 Alt Set: hPa Rwy Elev: 49 hPa Trans level: By ATC Trans alt: 7000' (5635')

COINTRIN ILS/DME Rwy 23 LOC 109.9 ISW Apr. Elev 1411'



LOC	ISW DME	2.0	4.0	6.0	8.0	12.0	14.0
(GS out)	ALTITUDE (M/AT)	2100' (735')	2700' (1335')	3300' (1935')	4000' (2635')	5200' (3835')	5900' (4535')



MISSED APPROACH: Climb on R-046 inbound to PAS VOR, then turn LEFT to intercept and follow R-220 inbound to SPR VOR climbing to 7000'. For turns below 5000' (3635') bank angle 25°, MAX IAS 185 KT.

STRAIGHT-IN LANDING RWY 23				CIRCLE-TO-LAND	
ILS RA 216' DA (M) 1565' (200')				LOC (GS out) MDA (M) 1770' (405')	
FLAL TDZ or CL out ALS out				ALS out	
A	RVR 600m VIS 800m	RVR 720m VIS 800m	1200m	RVR 720m VIS 800m	RVR 1500m VIS 1600m
B				2000m	
C					
D					