

Office 365 – Manage ForeFront Online Protection for Exchange from your ForeFront Protection for Exchange console

ForeFront Protection for Exchange (FPE) is the Microsoft solution to secure Exchange 2010 On Premise servers.

ForeFront Online Protection for Exchange (FOPE) is the FPE implementation to secure Exchange Online mailboxes.

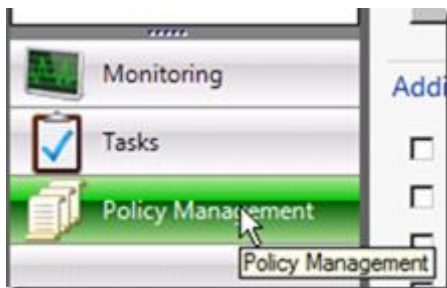
If you already have already deployed Exchange 2010 and FPE within your organization, and are starting Office 365 evaluation with mailboxes hosted Online, you may want to manage FOPE without to logon to the FOPE administration site.

Good news 😊, you can do it!!

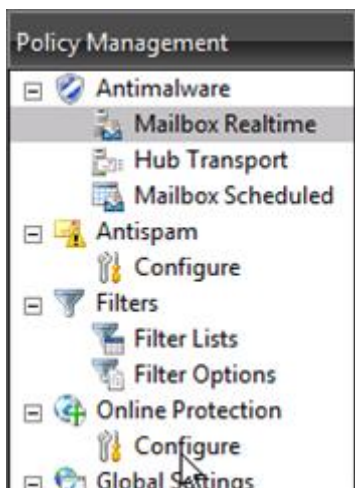
The first thing is to have FPE installed with the **FOPE Gateway** installed, off course.

The second thing is to connect to a server which is hosting FPE and open the console.

Once the FPE console has been loaded, go to **Policy Management** (down left of the console)



Then click on **Configure** link available below **Online Protection**



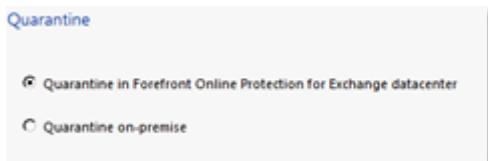
Enable the option **Enable ForeFront Online Protection for Exchange Gateway Management**



Then configure the FOPE management by entering the server name where FOPE Gateway has been installed, administrator account and FOPE credentials (company and On Line credentials); to enter credentials, just click on the **Edit Credentials...** button



Finally, you have to defined where is the Quarantine (you have to check



You have finished 😊, save the configuration and that's it, you can now manage FPE and FOPE from the same console