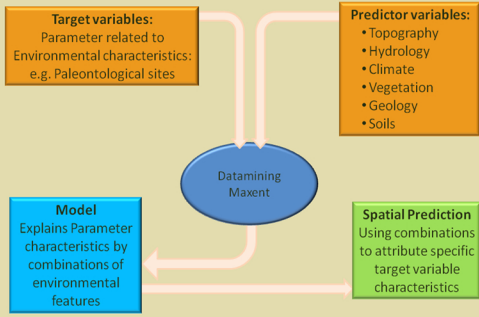




Modelled Probabilities for Paleontological Sites in the Makuyuni region, Tanzania

M. Märker + ROAD Team

Modelling Approach

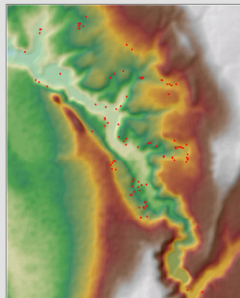


Results :

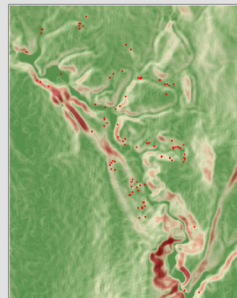
Variable importance:

- altitude above stream channel (47,5%)
- curvature (28,3%)
- profile curvature (16,1%)
- NDVI (4,7%)
- TWI (1,2 %)
- slope (1%)
- ASTER 3rd band (0,2%).

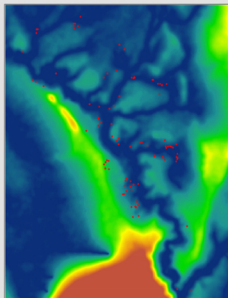
AUC = 0,642 with n= 99



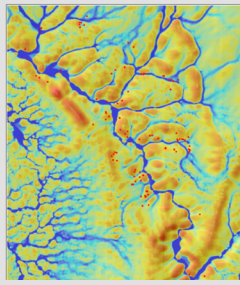
DEM of the Makuyuni Area [m]
Topographic data
High: 1108.26
Low: 1016.16



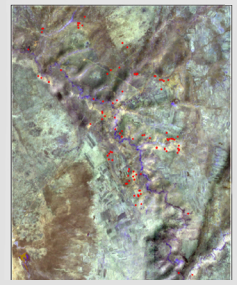
Slope in Degree of the Makuyuni Area
Topographic data
High: 11.00360
Low: 0.00376



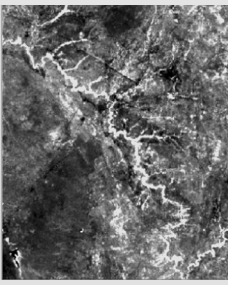
Altitude above Stream Channel
Topographic data
High: 202.204
Low: 0 [m]



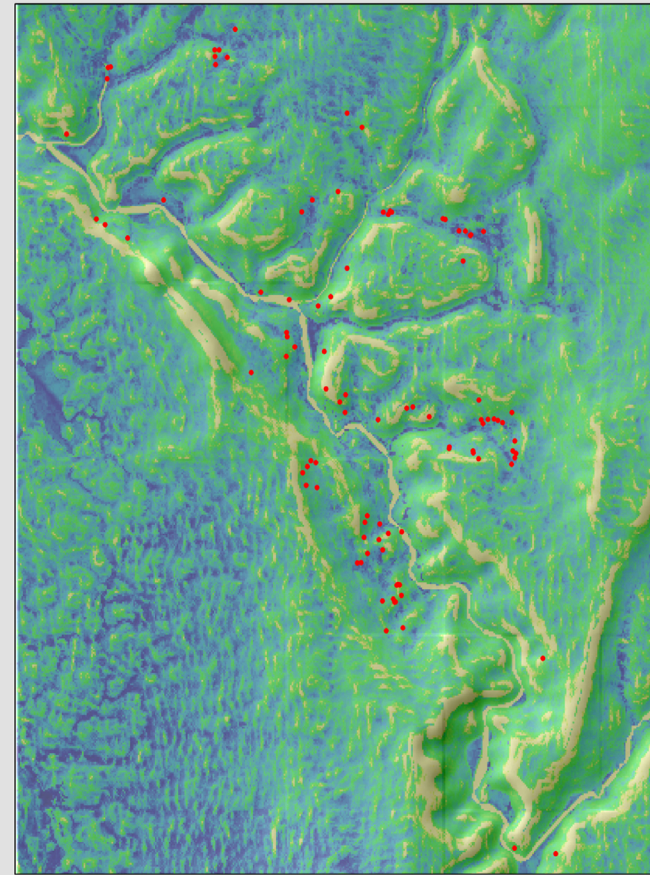
Wetness Index of the Makuyuni Area
Topographic data
High: 23.2033
Low: 0.20732



ASTER Spectral Data bands 7-9 of Makuyuni River basin
Topographic data
Red: Band 7
Green: Band 8
Blue: Band 9

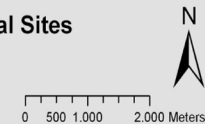


Normalized Difference Vegetation Index (NDVI) of the Makuyuni Area
Topographic data
High: 0.540371
Low: -0.540371



Modelled Probabilities for Paleontological Sites

- Paleontological sites
- High : 0,678315
- Low : 5,12118e-008



(c) M.Maerker, 2010 ROCEEH
Heidelberger Akademie der Wissenschaften