

Bulletin Financier.

Lundi, 2 septembre 1907. COMPTE D'ECHANGE (CLEARING HOUSE) DE LA NOUVELLE-ORLEANS.

Montant de ce jour... \$12,093,471 00 \$1,833,943 00

MARCHE MONETAIRE.

Nouvelle-Orleans - En Banque - Papier exceptionnel... 7 à 8 per cent

Actions diverses.

Table listing various stocks and companies such as Carillon Land, D. C. S. Co., and others with their respective prices.

Mobilis Funding Bonds.

Table listing Mobilis Funding Bonds and other financial instruments with their prices.

De tous les ports des Etats-Unis.

Table listing various commodities and their prices from different ports.

Marché de Liverpool.

Table listing market prices from Liverpool, including various goods and their values.

AU SUJET DE CERTIFICATS DE PIANOS.

Il nous est donné à entendre que la Nouvelle-Orleans et le territoire environnant ont été submergés...

L. GRUNEWALD CO., LTD. 133 RUE DU CANAL.

NOTRE OFFRE DE PRIME

Chaque paiement au comptant sur l'achat d'un nouveau piano, nous vous allouons un Cinq-Quinze en sus du montant payé.

JUNIUS HART PIANO HOUSE

J. F. SIMMONS, Président et Directeur. 840 Rue du Canal.

Bulletin Commercial

Lundi, 2 septembre 1907.

COTON.

Table listing cotton market prices and related information.

Marché de la Nouvelle-Orleans

Table listing market prices for various goods in New Orleans.

SUR PLACE.

Table listing local market prices for various commodities.

PROVISIONS.

Table listing prices for various provisions and food items.

PRODUITS DE LA CAMPAGNE.

Table listing prices for various agricultural products.

EPICERIES.

Table listing prices for various grocery items.

TONNELLERIE.

Table listing prices for various types of barrels.

RIZ.

Table listing prices for various types of rice.

GRAINE DE COTON ET SES PRODUITS.

Table listing prices for cotton seeds and their products.

FARINES.

Table listing prices for various types of flour.

FRUITS ET NOIX.

Table listing prices for various fruits and nuts.

CHARBON.

Table listing prices for various types of coal.

VAPEURS.

Table listing prices for various types of steamships.

NOUVELLE-ORLEANS-HAYRE.

Table listing prices for various goods between New Orleans and Hayre.

CHANGEMENT DE TABLEAU.

CHANGEMENT DE TABLEAU. TRAIN No 5 "TEXAS LOCAL".

PROPRE SANITARIUM DE LA NATURE.

PROPRE SANITARIUM DE LA NATURE. "Ozone Route".

CHARMANTS VOYAGES.

CHARMANTS VOYAGES. POUR CETTE SAISON DE L'ANNEE.

BILLET EN VENTE TOUT LES JOURS.

Table listing ticket prices for various destinations.

PHONE MAIN 4093.

PHONE MAIN 4093. 1500-1500.

Q. & C. New Orleans and Northeastern Railroad.

Q. & C. New Orleans and Northeastern Railroad. LES EXCURSIONS DU MERCREDI A LUMBERTON, Miss., AUX POINTS INTERMEDIAIRES.

YAZOO & MISSISSIPPI VALLEY.

YAZOO & MISSISSIPPI VALLEY. Départs: 12 AVRIL 1907.

ST-CHARLES ET COCHONNE.

ST-CHARLES ET COCHONNE. JOURNÉE A. M. 1907.

BUREAU DES TICKETS.

BUREAU DES TICKETS. ST-CHARLES ET COCHONNE.

CHANGEMENT.

CHANGEMENT. Le STERLING est facile.

ACTIONS ET BONS.

ACTIONS ET BONS. Derniers cours de "N. O. Stock Exchange".

Banques.

Table listing bank names and their respective values.

Compagnies d'assurance.

Table listing insurance companies and their values.

Chemins de fer.

Table listing railroad companies and their values.

RECU, NET.

Table listing net receipts for various categories.

MOUVEMENT DU COTON.

Table listing cotton movement statistics.

EXPORTATIONS A L'ETRANGER.

Table listing export statistics to foreign countries.

FAVORABLE.

Table listing favorable market conditions.

RECU, NET.

Table listing net receipts for various categories.

MOUVEMENT DU COTON.

Table listing cotton movement statistics.

EXPORTATIONS A L'ETRANGER.

Table listing export statistics to foreign countries.

FAVORABLE.

Table listing favorable market conditions.

RECU, NET.

Table listing net receipts for various categories.

MOUVEMENT DU COTON.

Table listing cotton movement statistics.

EXPORTATIONS A L'ETRANGER.

Table listing export statistics to foreign countries.

FAVORABLE.

Table listing favorable market conditions.

RECU, NET.

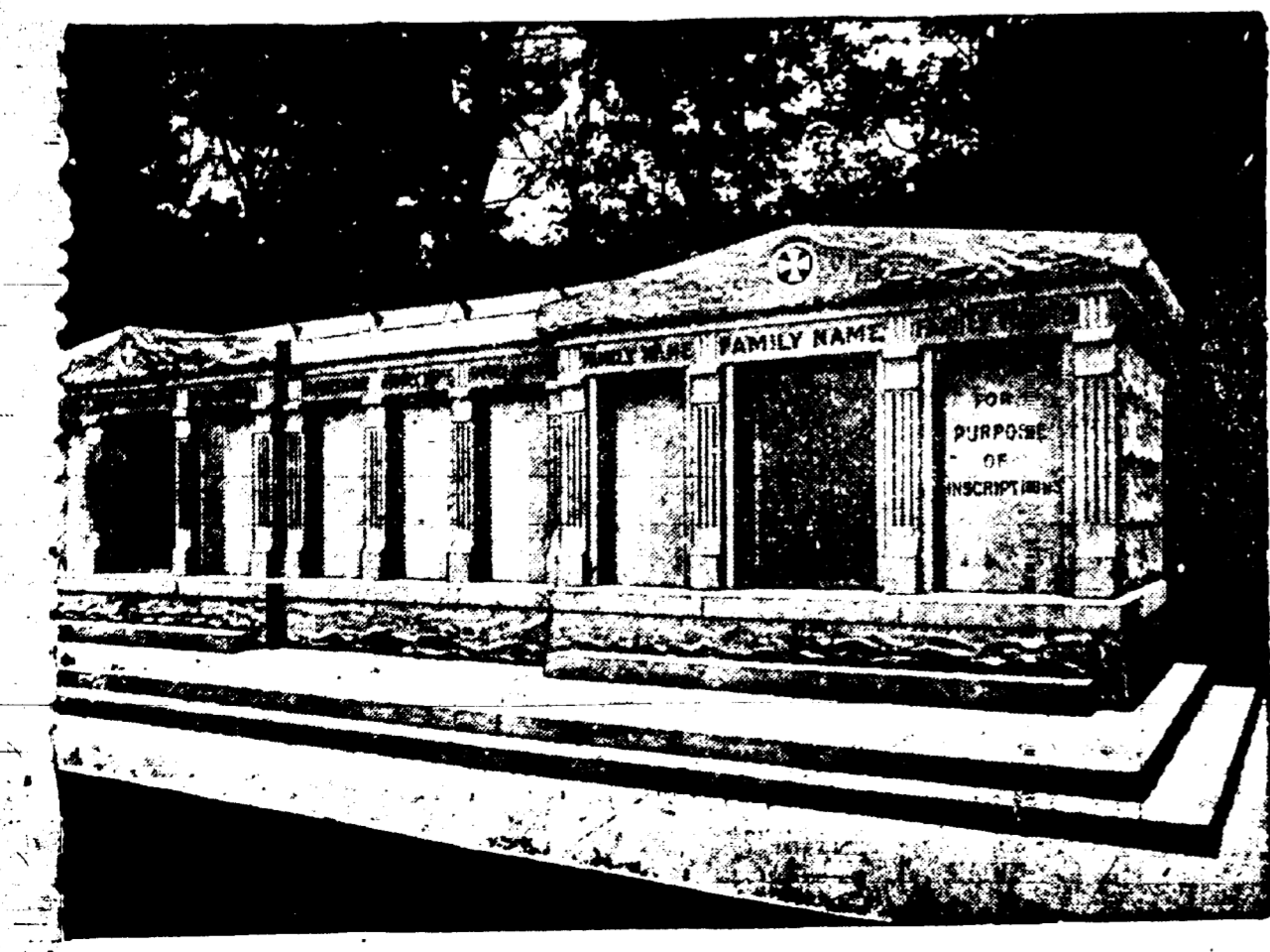
Table listing net receipts for various categories.

MOUVEMENT DU COTON.

Table listing cotton movement statistics.

EXPORTATIONS A L'ETRANGER.

Table listing export statistics to foreign countries.



A VENDRE - Les caveaux dont on voit ci-dessus la gravure. Ils sont en gruit, au milieu St-Louis No 3, Avenue de l'Esplanade. Il en est quant une contenance de 12 grands cercueils et d'autres de 6 Oncaux distincts des autres, et tous seront vendus séparément à des prix très réduits. S'adresser à CHAS. A. ORLEANS, No 319 Rue Carondelet ou au Gardien.