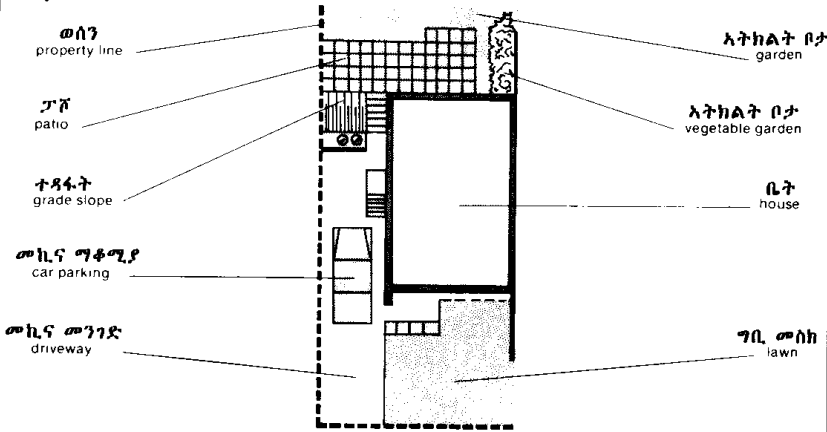


**ቤት**  
**HOUSE**



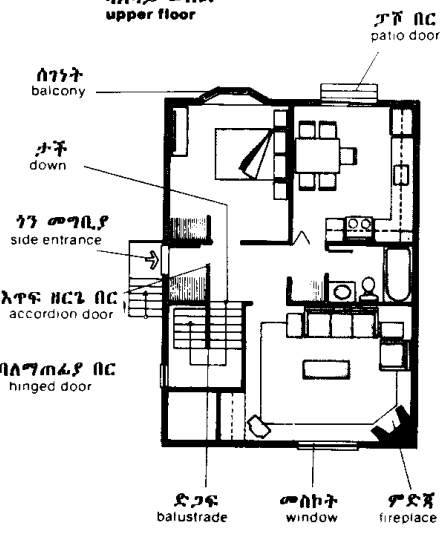
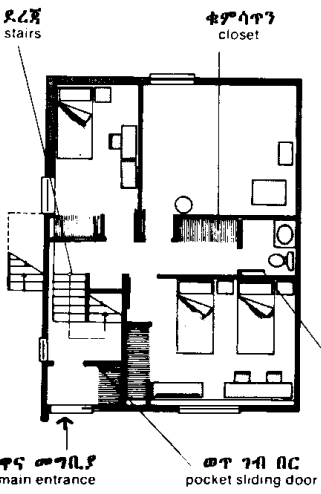
የቤት ፕላን  
plan reading

ግቢ ፕላን  
lot plan



ምድር ቤት  
ground floor

ላላይ ወለል  
upper floor



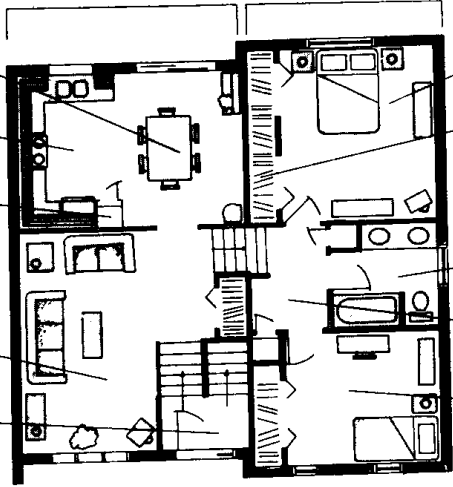
ቤት

የቤት ክፍሎች  
rooms of the house

ምድር ቤት  
ground floor

ላላይ ወለል  
upper floor

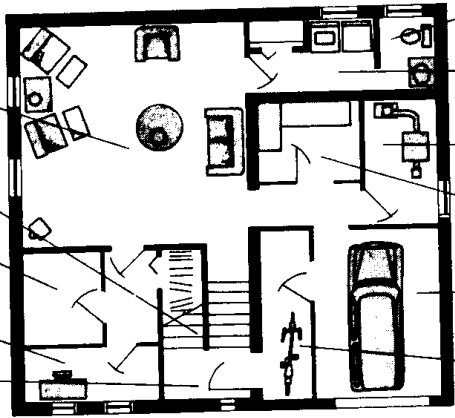
- ምግብ ቤት  
dining room
- ኩሽና  
kitchen
- ግጾት  
pantry
- ሳሎን  
living room
- መተላለፊያ  
hall



- ዋና መኝታ ክፍል  
master bedroom
- ቆም ሳጥን  
closet
- ባሻ ቤት  
bathroom
- መተላለፊያ  
hallway
- መኝታ ክፍል  
bedroom

ምድር ቤት  
basement

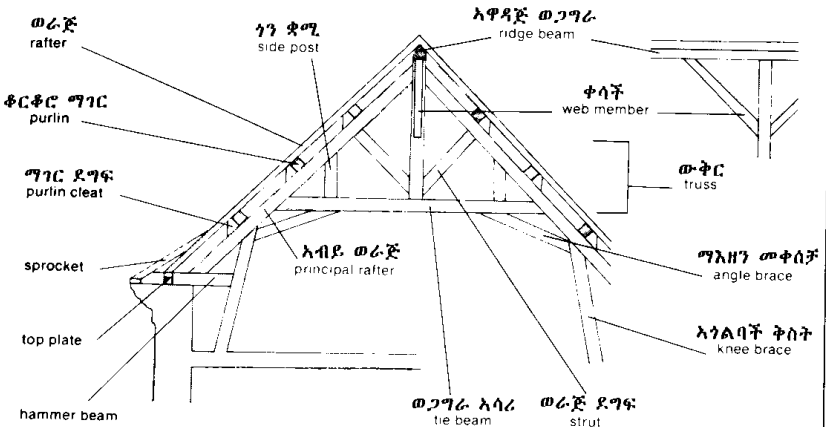
- መጫወቻ ክፍል  
playroom
- ደረጃ ክፍተት  
stairwell
- ግብፀት ክፍል  
cold room
- ግጥኛ  
study
- ግራፊያ  
landing



- መጫኛ  
lavatory
- ልብስ ግጦቢያ ክፍል  
laundry room
- ግጥሪያ ክፍል  
heating room
- እጅሰራ ክፍል  
workshop
- መኪና ቤት  
garage
- እቃ ክፍል  
storage space

የቤት ውቅር  
structure

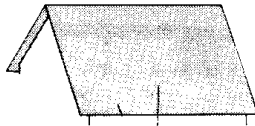
ውቅር ጣራ  
roof structure



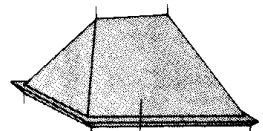
የጣራ ዓይነቶች  
types of roofs



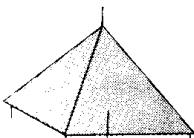
ዝንብል ጣራ  
lean-to roof



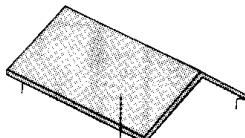
ተዳፋት ጣራ  
pitched roof



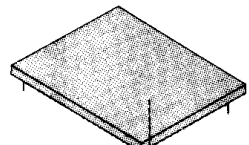
ኩር ጣራ  
hip roof



ጋሼዮን ጣራ  
pavilion roof



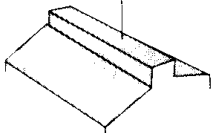
ሰቀላ ጣራ  
gable roof



ቀኖ ጣራ  
flat roof

የጣራ አይነቶች  
types of roofs

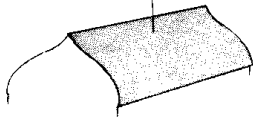
ሞኒተር ጣራ  
monitor roof



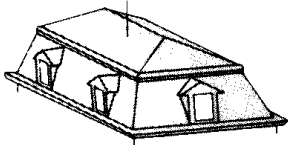
ወጣገ ጣራ  
hip-and-valley roof



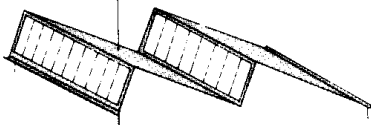
አጌ ጣራ  
ogee roof



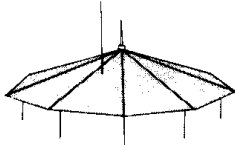
ፕንድ ዝንብል ጣራ  
mansard roof



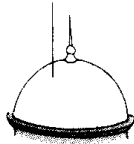
መጋዝ ፕሮስ ጣራ  
sawtooth roof



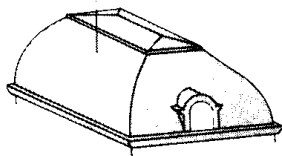
ሮቲንዳ ጣራ  
rotunda roof



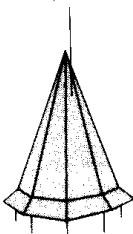
ደወል ጣራ  
bell roof



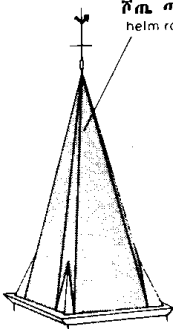
ቅርፅ-ዘውድ ጣራ  
imperial roof



ገደል ጣራ  
sloped turret



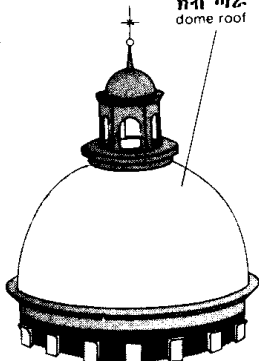
ሾጢ ጣራ  
helm roof



ቅምብቢት ጣራ  
conical broach roof



ክብ ጣራ  
dome roof

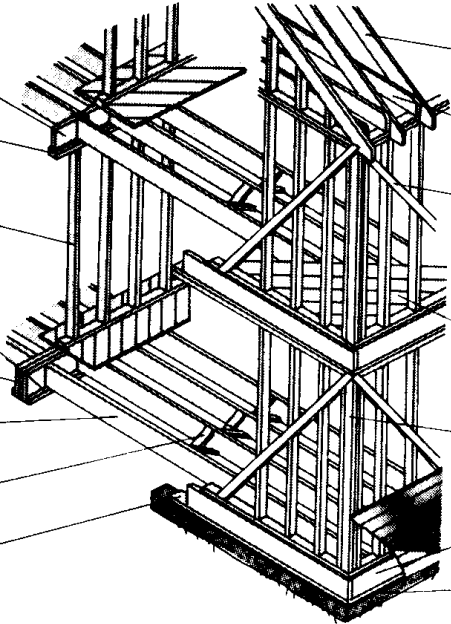


የቤት ውቅር  
structure

አውታር  
frame

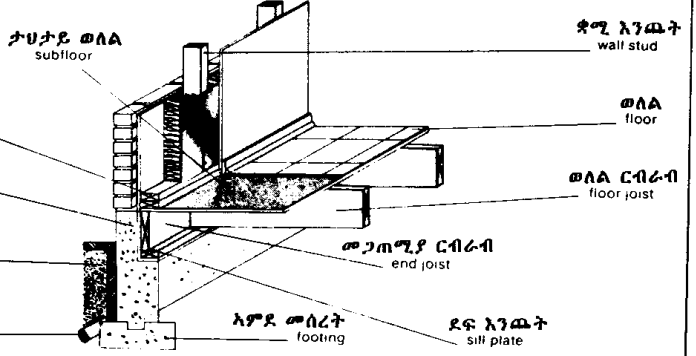
- እሳት ከላ  
firestopping
- ድርብ ጣውላ  
double plate
- ቋሚ እንጨት  
stud
- አገድጽ አሳሪ  
ledger
- ወፍራጽ ወጋገራ  
girder
- ወለል ርብራብ  
floor joist
- መስተላ ትስት  
bridging
- ደፍ እንጨት  
sill plate

- ወራጅ  
rafter
- ገበር ጣሪያ ርብራብ  
ceiling joist
- መቀሰቻ  
brace
- ታህታይ ወለል  
subfloor
- ቋሚ ግእዘን  
corner stud
- መጋጠሚያ ርብራብ  
end joist
- መሰረት  
foundation



መሰረቶች  
foundations

- ታህታይ ወለል  
subfloor
- ደፍ  
sill
- መሰረት  
foundation
- ጠጠር  
gravel
- ፍሳሽ ቴሶ  
drain tile



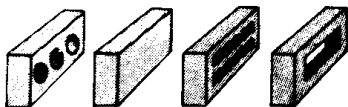
- ቋሚ እንጨት  
wall stud
- ወለል  
floor
- ወለል ርብራብ  
floor joist
- መጋጠሚያ ርብራብ  
end joist
- እምደ መሰረት  
footing
- ደፍ እንጨት  
sill plate

ዘንጻ መሳሪያ  
building materials

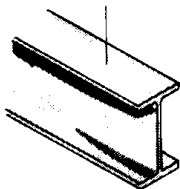
ድንጋይ  
stone



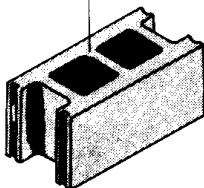
ሸክላ  
brick



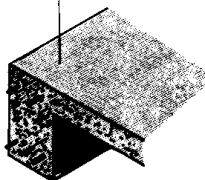
እረብ ብረት  
steel



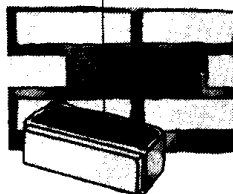
ብሉኬት  
concrete block



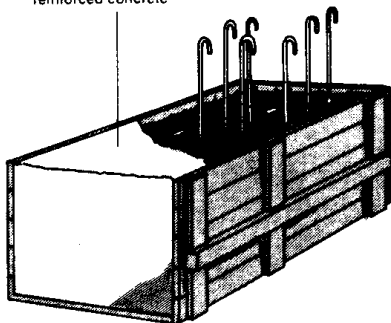
ጥቅጥቅ ጌቶን  
prestressed concrete



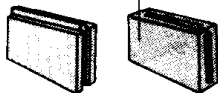
ጭርታር  
mortar



ብርት ጌቶን  
reinforced concrete



ጅሶ ብሉኬት  
gypsum block



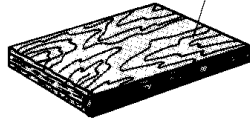


ህንፃ መሳሪያ  
building materials

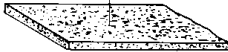
ንብብር ፋይዚት  
plasterboard



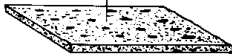
ንብብር ጣውላ  
plywood



ልጦጥ ጀሶ ቅብ ፋይዚት  
plain gypsum lath



ሸንቁርቁር ጀሶ ቅብ ፋይዚት  
perforated gypsum lath



ጣውላ  
wood



ቅርፁ-አላግዝ ምርብ ብረት  
diamond mesh metal lath



ልሸን ቡኬት  
plaster

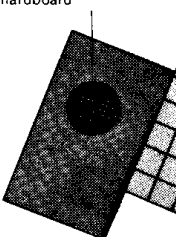


ሲግንቶ  
cement

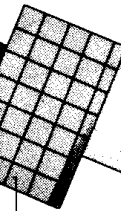


ፋይዚት  
hardboards

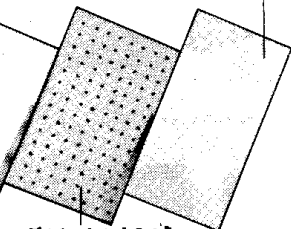
መደበኛ ፋይዚት  
standard hardboard



ፕላስቲክ ልብድ ፋይዚት  
plastic-laminated hardboard



ደቃቅ ስር ፋይዚት  
particle board



ብርቅብ ፋይዚት  
enameled hardboard

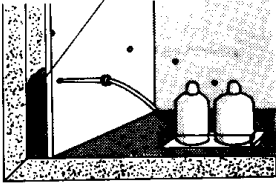


ሸንቁርቁር ፋይዚት  
perforated hardboard

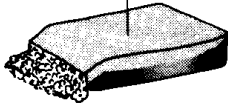


ህንፃ መሳሪያ  
**building materials**

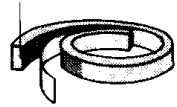
ኮረፋ ክለት  
 foam insulation



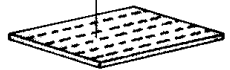
AA ሙሉት ክለት  
 loose fill insulation



ኮረፋ ላስቲክ ክለት  
 foam rubber insulation



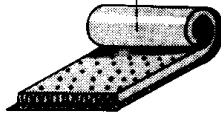
ጥንክር ፋይዚት ክለት  
 rigid board insulation



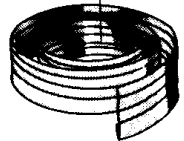
ቅርፅ ክለት  
 moulded insulation



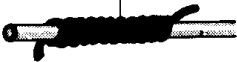
ባና ክለት  
 blanket insulation



ቀጭጭን ነጣሪ ብረት ክለት  
 thin spring-metal insulation



ጥምጥም ቧምቧ ክለት  
 pipe-wrapping insulation



ባት ክለት  
 batt insulation



ቪኒል ክለት  
 vinyl insulation



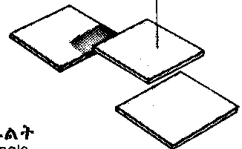
ቁርጥ ክፍን  
 shingle



ንጣፍ  
 tile



ወለል ንጣፍ  
 floor tile



ቁርጥ አስቤስቶስ  
 asbestos shingle

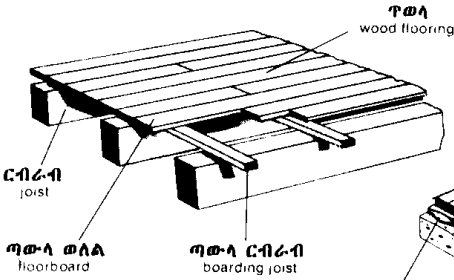


ቁርጥ አስፋልት  
 asphalt shingle

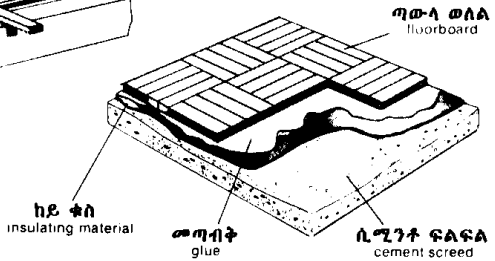


ጣውላ ስራ  
wood flooring

እንጨት ርብራብ ላይ ጥወላ  
wood flooring on wooden structure



ሲሚንት ውልወል ላይ ጥወላ  
wood flooring on cement screed

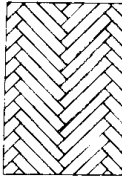
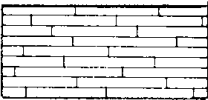


ወለል ጣውላ አደራደር  
wood flooring arrangements

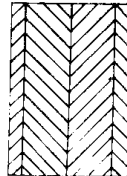
ተላላፊ ግጥም ጣውላ ስራ  
strip flooring with alternate joints



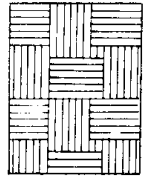
ስክ ጣውላ ስራ  
overlay flooring



herringbone parquet  
ቅርፅ ላሳ አጥንት ፓርኬ

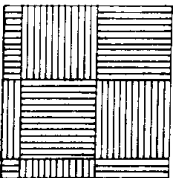


herringbone pattern  
ላሳ አጥንት ቅርፅ

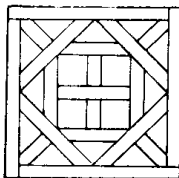


inlaid parquet  
ትላልፍ ፓርኬ

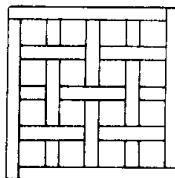
ቅርፅ ቅርጫት ስራ  
basket weave pattern



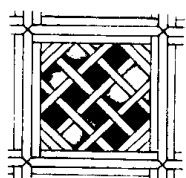
አርንበር ፓርኬ  
Arenberg parquet

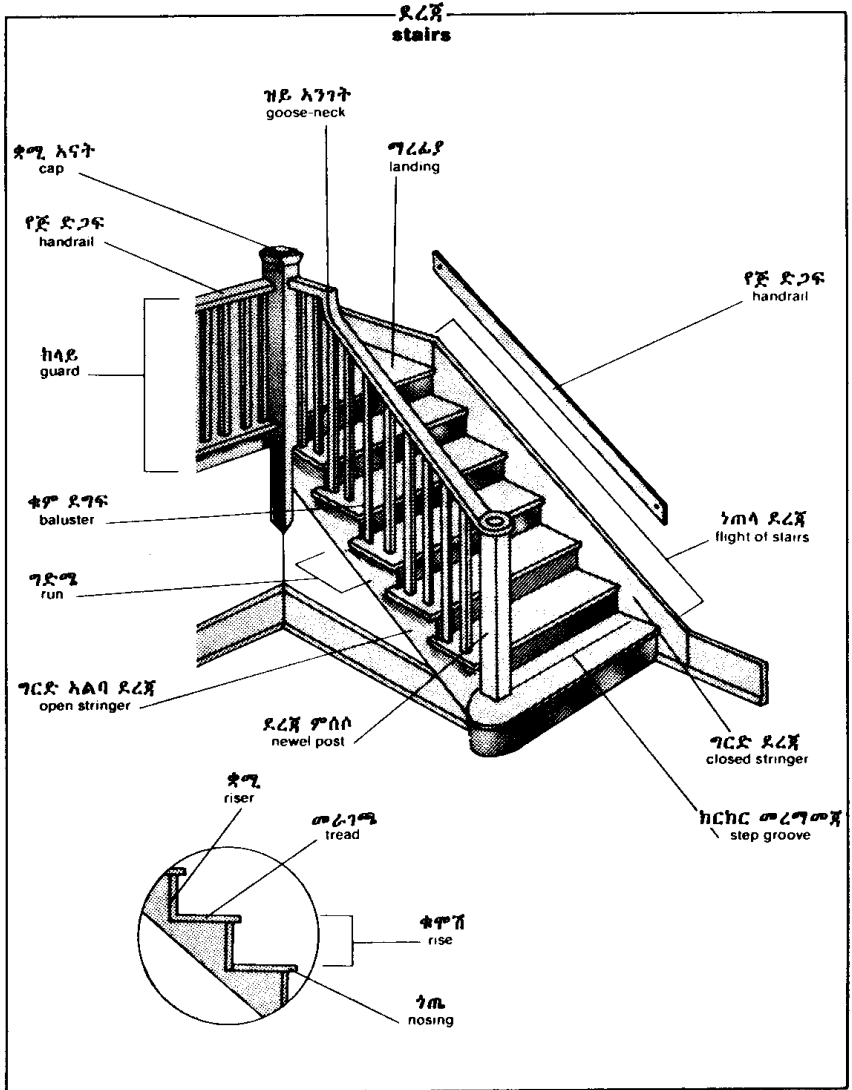


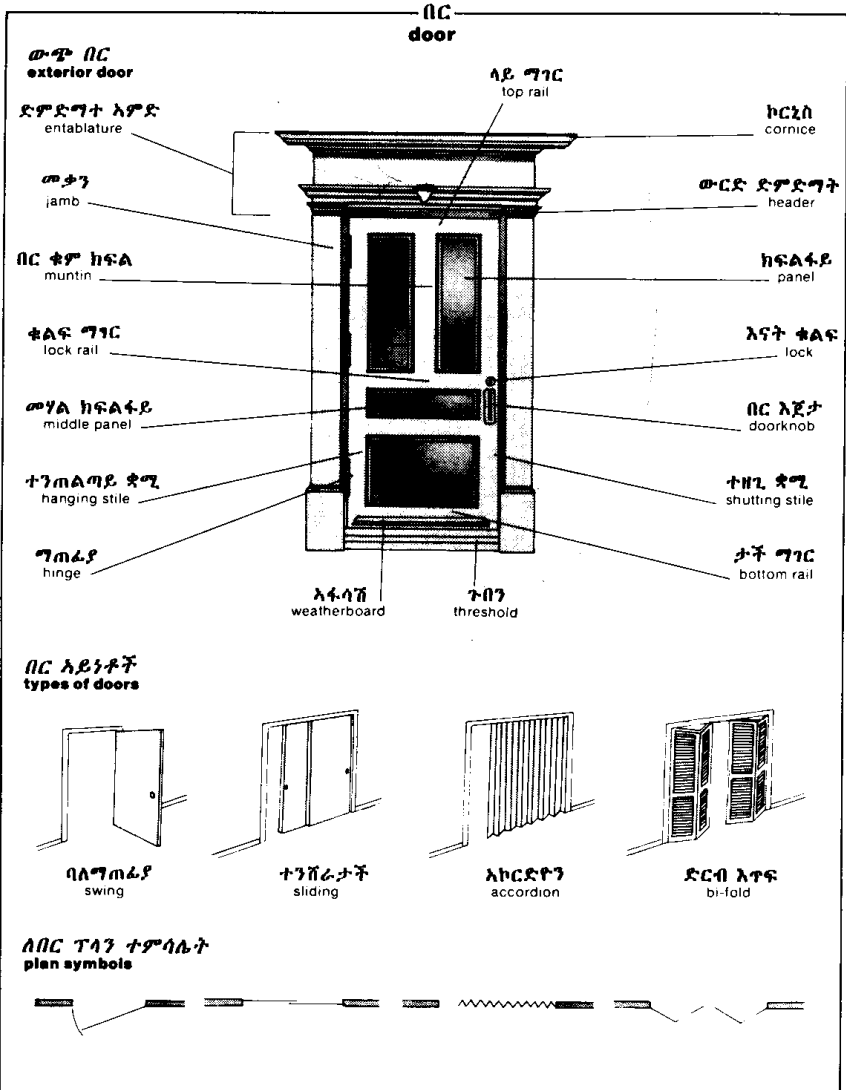
ቻንተላ ፓርኬ  
Chantilly parquet



ቬርሳይ ፓርኬ  
Versailles parquet

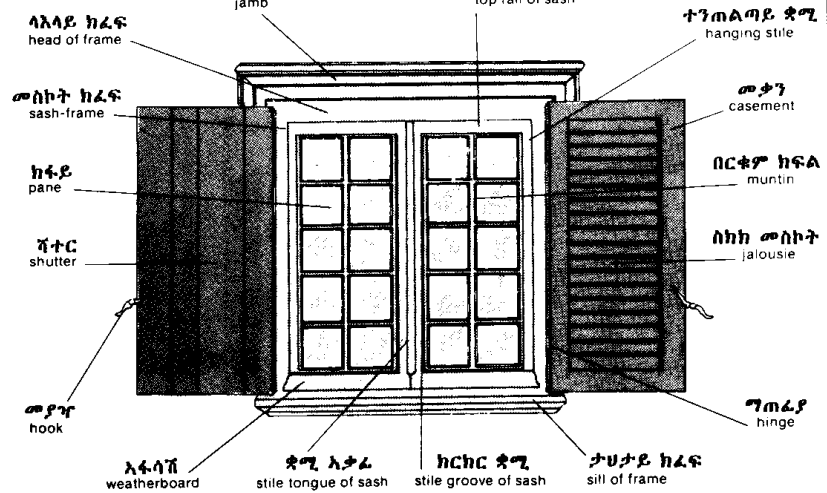




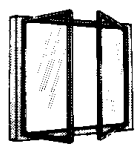


መስኮት  
window

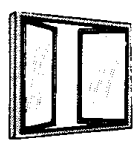
ውቀራ  
structure



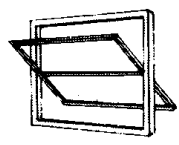
የመስኮት አይነት  
types of windows



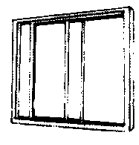
French window  
ፈረንሳይ መስኮት



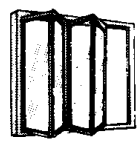
casement window  
መቃን መስኮት



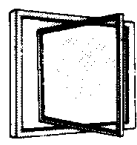
horizontal pivoting  
ገድም ተሽከርካሪ



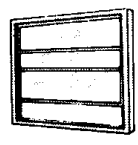
sliding  
ተንሸራታች



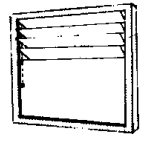
accordion  
አኮርድዮን



vertical pivoting  
ቁም ተሽከርካሪ

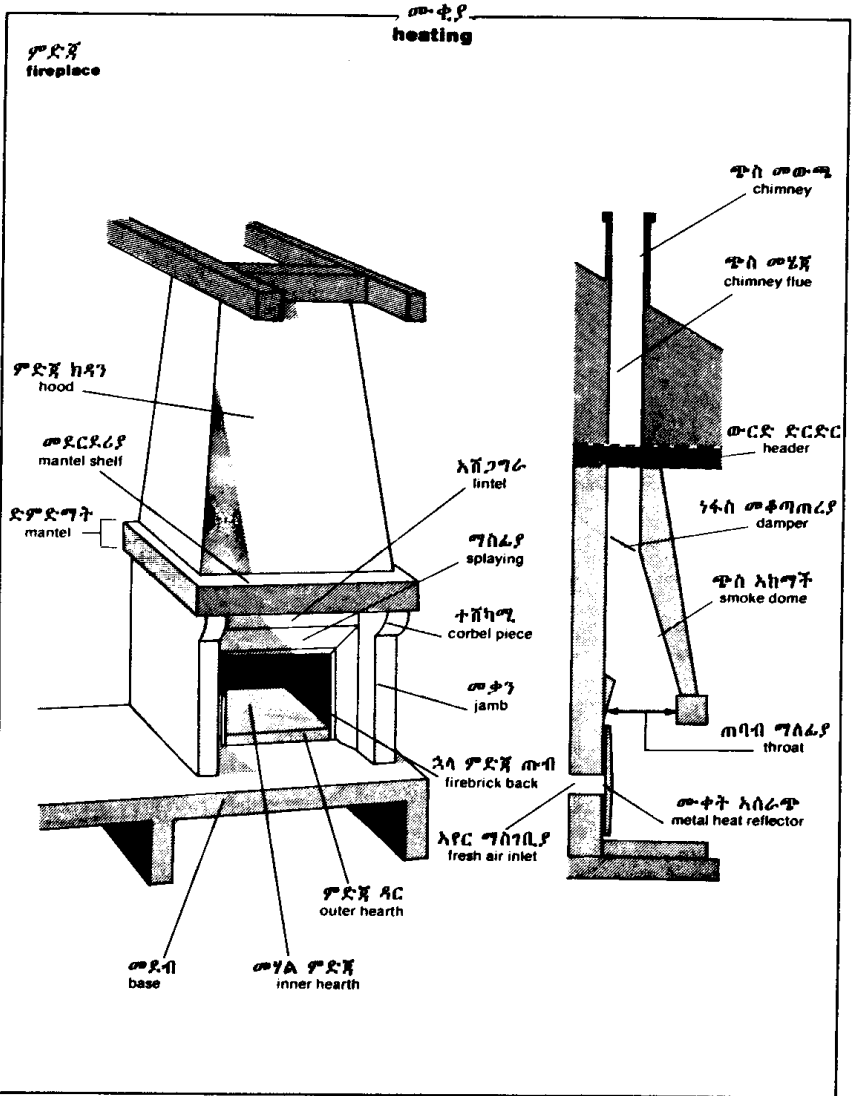


double-hung  
ጥምር ተካፋች



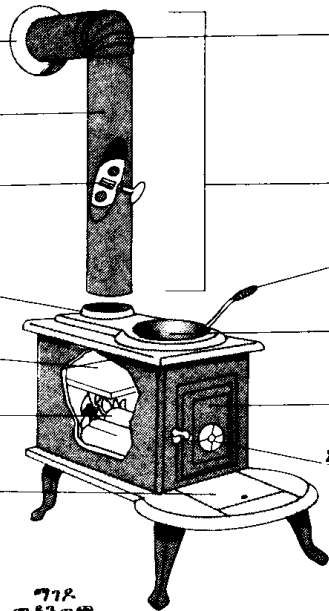
louvered window  
ሉቨር መስኮት

ሙቀት  
heating



ሙቂያ  
heating

ማገዶ ምድጃ  
wood stove



ክፈፍ  
trim collar

ጉብጥ  
elbow

ጭስ መውጫ ቱቦ  
flue pipe

ጭስ መቆጣጠሪያ  
flue damper

ጭስ መውጫ ግገናኛ  
chimney connection

መሳኪያ  
flue collar

ተላቃቂ እጀታ  
detachable handle

ገርዶሽ  
baffle

መጣጃ  
pothole lid

ግንደጃ  
firebox

ግንዶ በር  
loading door

አመድ ቋት  
ash lid

አየር ግስገቢያ መቆጣጠሪያ  
air inlet control

ምድጃ መሳሪያዎች  
firetending tools

መቆስቆሻ  
poker

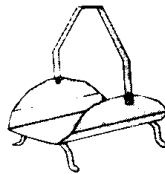
መጥረጊያ  
broom

አመድ መዛቂያ  
shovel

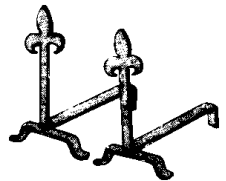
ግንዶ መቆገጫ  
log tongs



ግንዶ ግቅረቢያ  
log carrier



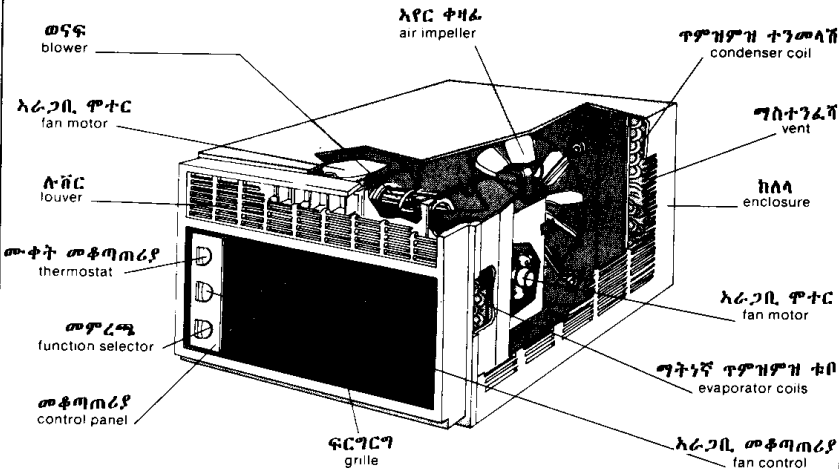
andiron





አየር ማስማሚያ  
air conditioning

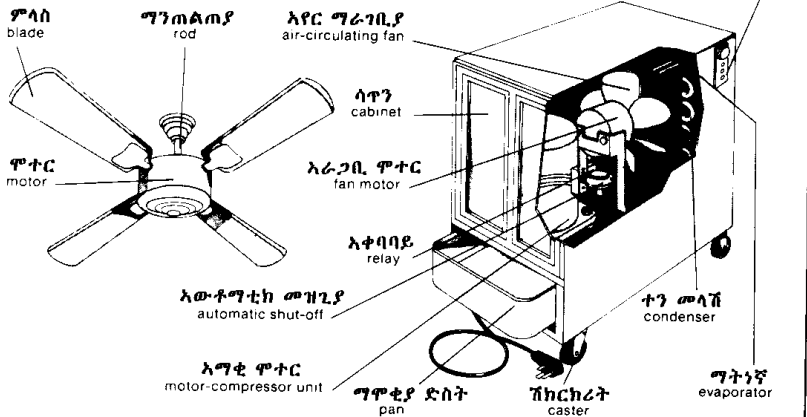
ክፍል አየር ማስማሚያ  
room air conditioner



ጣሪያ አራጊቢ  
ceiling fan

ፀረ-ውሃ እዝለት  
dehumidifier

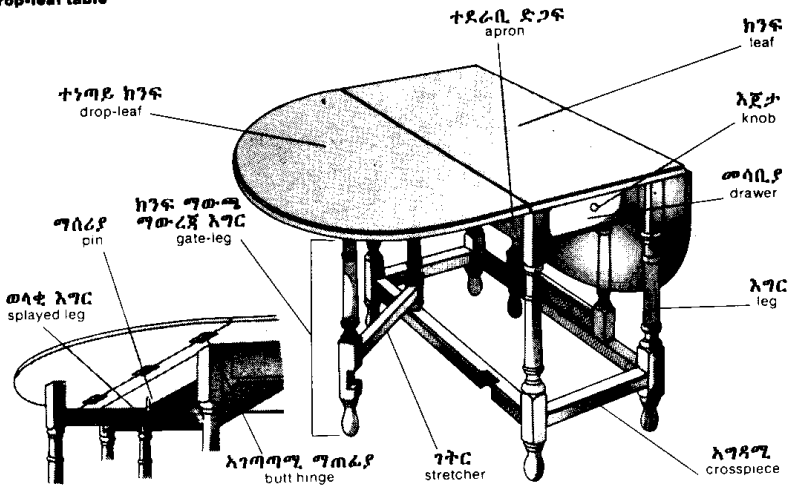
ውሃዝለት መቆጣጠሪያ  
humidistat



**የቤት ቁሳቁስ**  
**HOUSE FURNITURE**

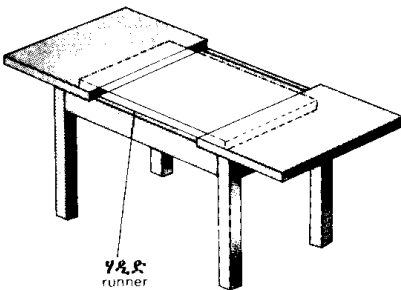
ጠረጴዛ  
table

ክንፍ ተነጣጣይ ጠረጴዛ  
drop-leaf table



ዋና ዋና የጠረጴዛ አይነቶች  
major types of tables

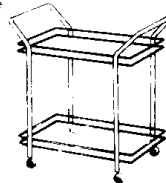
ተራዛሚ ጠረጴዛ  
extension table



ተሰካኪ ጠረጴዛዎች  
nest of tables

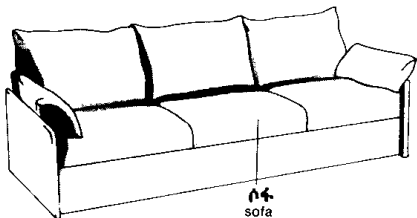


ማቅረቢያ ጠረጴዛ  
serving table

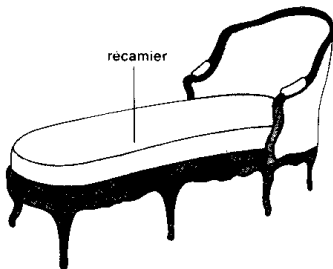


ዋና ዋና ባለመደገፊያ የወንበር ላይነቶች  
principal types of armchairs

ባለመደገፊያ ወንበሮች  
armchairs

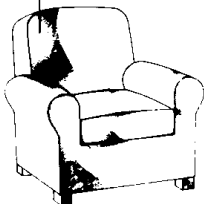


ሶፋ  
sofa



recamier

ፖቾ ወንበር  
club chair



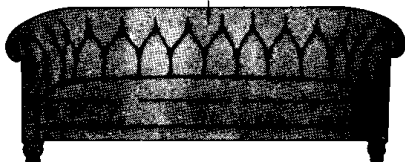
ባለሁለት ሶፋ  
love seat



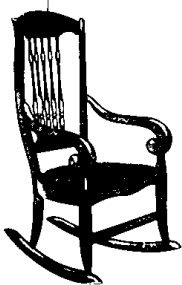
የባለስልጣን ወንበር  
director's chair



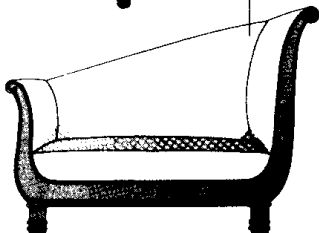
chesterfield



መወዛወዣ ወንበር  
rocking chair

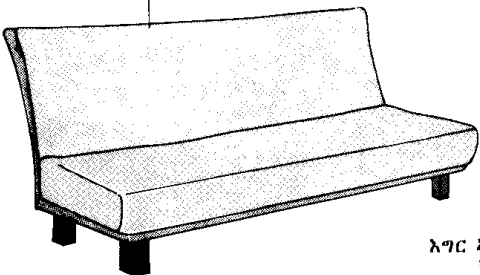


meridienne

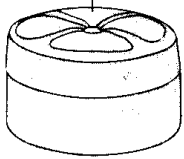


መቀመጫዎች  
seats

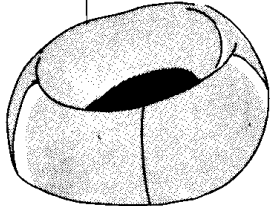
ልቅ ሶፋ  
banquette



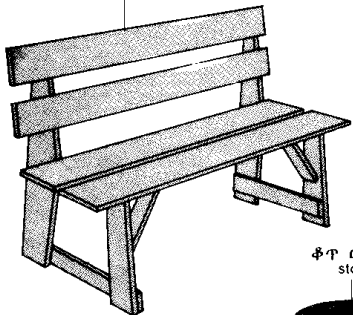
ዙፊ  
hassock



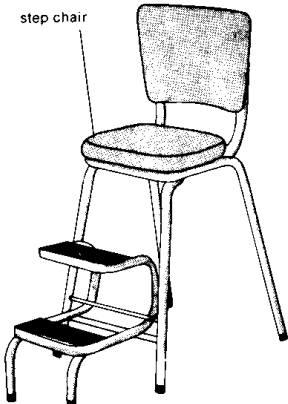
እግር አልባ ምቹ ወንበር  
bean bag chair



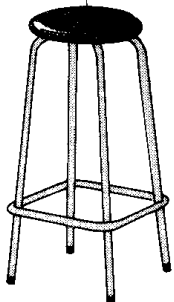
ባለመደገፊያ እግዳሚ መቀመጫ  
bench



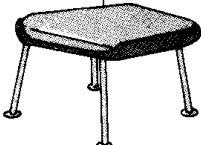
step chair



ቆጥ ወንበር  
stool



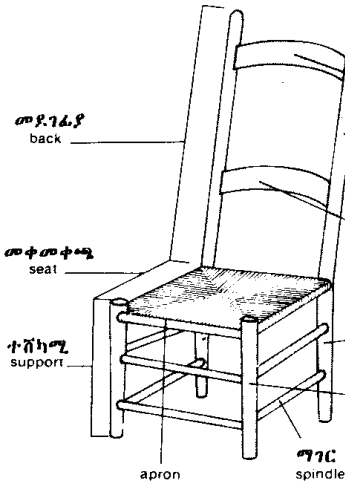
ዱካ  
ottoman



ጣልቃገብ ወንበር  
side chair

ክፍል  
parts

stretchers



ላላይ  
ear

ላላይ መደገፊያ ጣንጣር  
top rail

የመደገፊያ ቋሚ  
stife

ታህታይ መደገፊያ ጣንጣር  
cross rail

የኋላ እግር  
rear leg

የፊት እግር  
front leg

ጣንጣር  
apron

ጣንጣር  
spindle



H stretcher



saltire

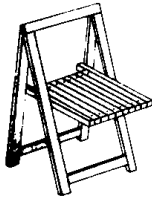


crinoline stretcher

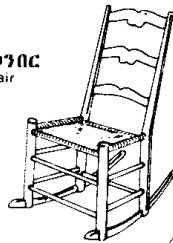
የወንበር አይነቶች  
types of chairs



ታጣፊ ወንበር  
folding chair



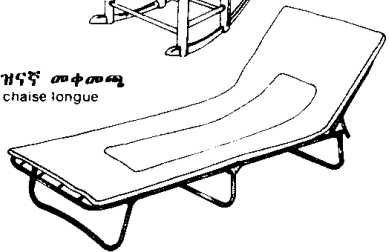
መወገወግ ወንበር  
rocking chair

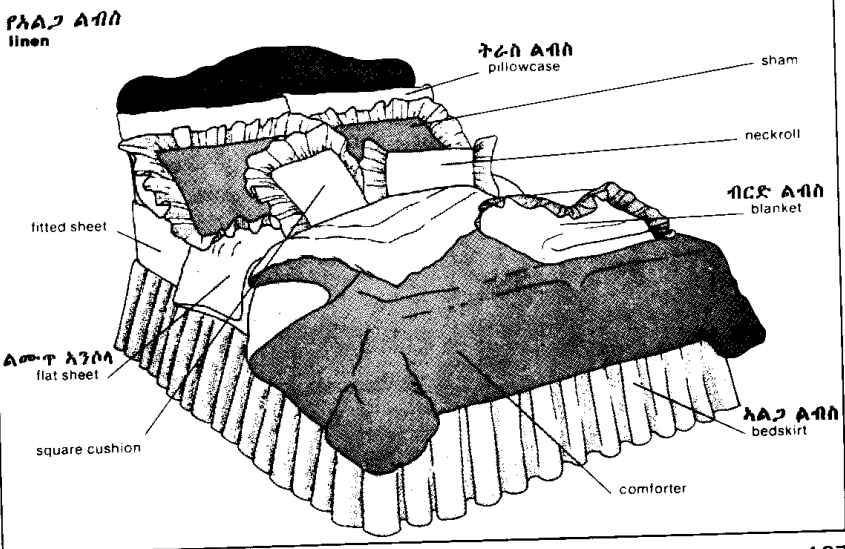
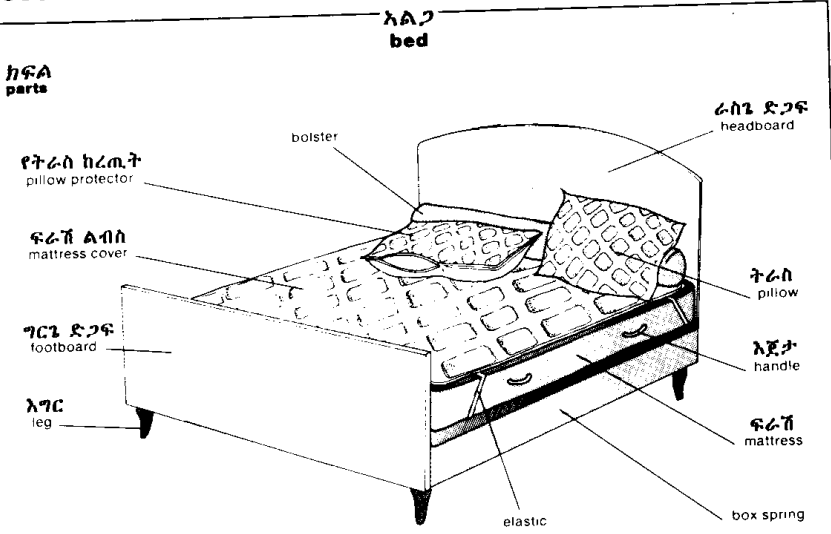


ተነባባሪ ወንበሮች  
stacking chairs



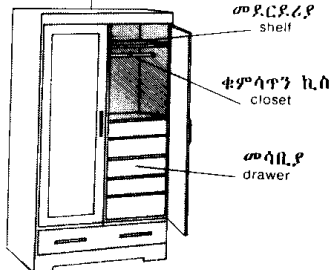
መዝናኛ መቀመጫ  
chaise longue



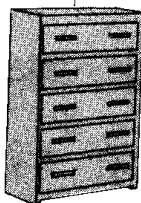


የእቃ ሳጥን  
storage furniture

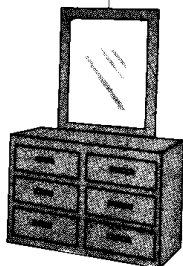
የልብስ ቁምሳጥን  
wardrobe



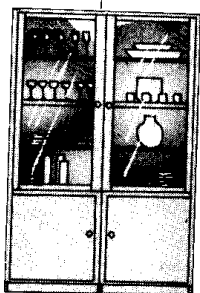
ባለመሳቢያ ቁምሳጥን  
chiffonier



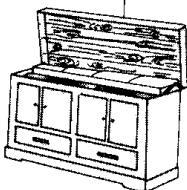
መልበሻ ቁምሳጥን  
dresser



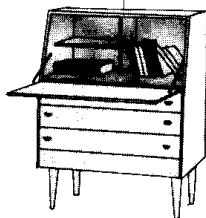
ባለቤፌ የእቃ ካቢኔት  
buffet and china cabinet



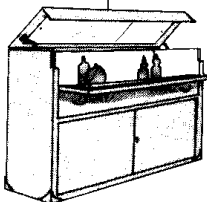
chest



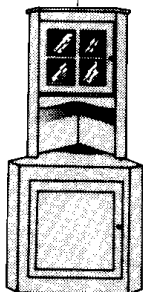
የፀሃፊ ጠረጴዛ  
secretary



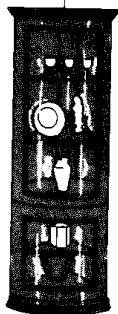
የመጠጥ መደርደሪያ  
bar



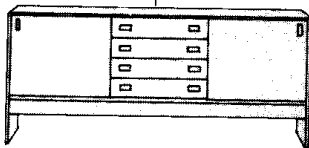
የማእዘን ቁምሳጥን  
corner cupboard



የትርጉሳት ቁምሳጥን  
showcase



ቢፌ  
buffet





መስኮት ማስጌጫዎች  
window accessories

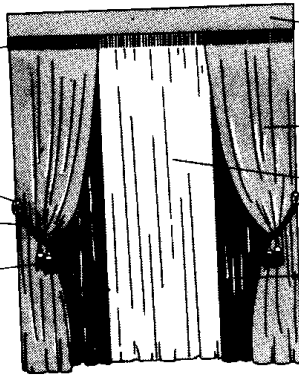
መጋረጃ  
curtain

መርገፍ  
fringe trimming

መሸበቢያ  
holdback

መሸበቢያ ሊባት  
cord tieback

መንሳነስ  
tassel



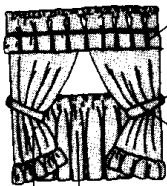
ኮርኒስ  
cornice

ተደራቢ  
overdrapery

ገባር  
sheer curtain

ተሳቢ መጋረጃ  
draw drapery

glass curtain



valance

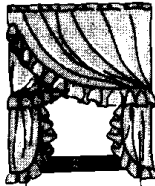
tieback hook

tieback

café curtain

cottage curtain

crisscross curtains



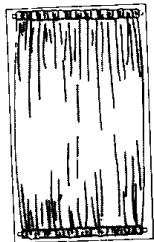
ruffle

panel

ለት መጋረጃ  
loose curtain



ለጥፍ መጋረጃ  
attached curtain



ሸንሸን እናት  
shirred heading



እጥፍት እናት  
pleated heading



ለመጥ እጥፍት  
flat pleat



ቤጋ  
box pleat



ገለበጥ ቤጋ  
inverted pleat



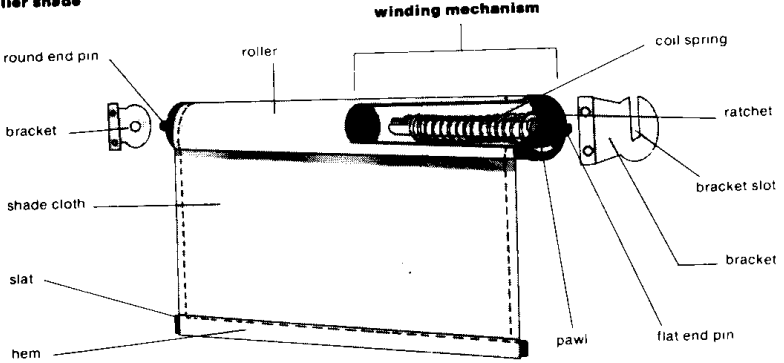
ቁንጥጥ ቤጋ  
pinch pleat



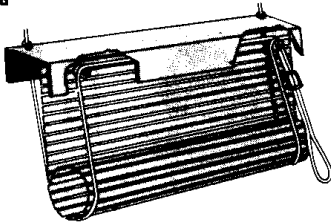


መስኮት ግሰጊዳዎች  
window accessories

roller shade



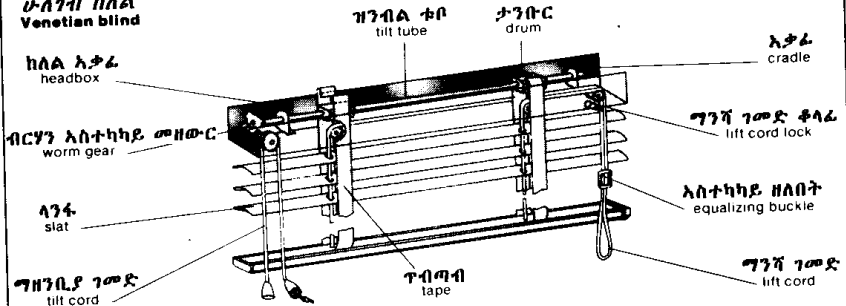
ተጠቅላይ ክለሳ  
roll-up blind



ክላይ  
shutters



ሁለገብ ክለሳ  
Venetian blind



መብራቶች  
lights

ባለብዙ ሻማ መብራት  
chandelier

ተወዛዋኝ አምቸል  
swag lamp

ግጣሙ-ጣራ  
ceiling fitting

ሰንሰለት  
chain

ሉል  
globe

ገደል አስተላላፊ ገመድ  
power supply cord

የወለል መብራት  
floor lamp

መርገፍ  
pendant

ሻማቃፊ  
bobèche

አምድ  
column

ተስተካካይ የገድገዳ አምቸል  
swinger wall lamp

የጠረጴዛ  
መብራት  
table lamp

ዝርፍ ሰንሰለት  
drop

የግእዝን መብራት  
corner lighting

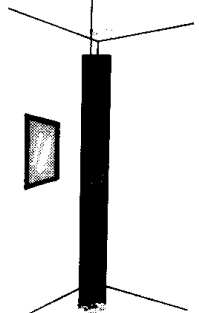


ክለል  
shade

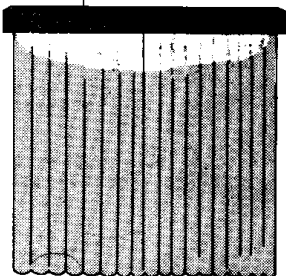
ቋጫ  
stand



ግጣሙ-ገድገዳ  
wall fitting



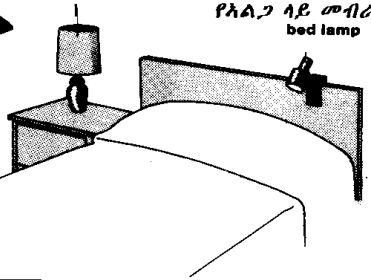
valance lighting



የራስጊ መብራት  
bedside lamp

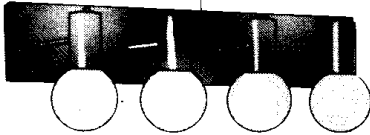
የአልጋ ላይ መብራት  
bed lamp

ተሸከሚ  
base

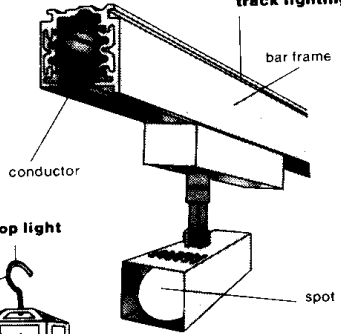


መብራቶች  
lights

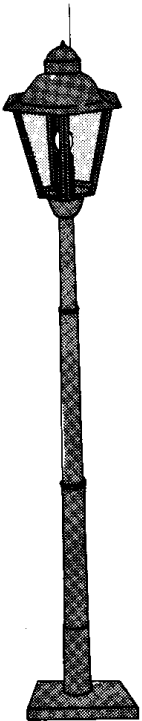
ድርድር አምጽፋ  
strip fixture



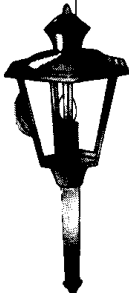
track lighting



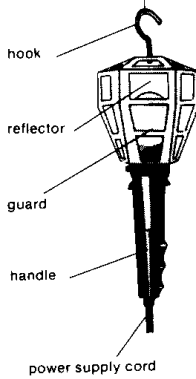
ምሰሶ ፋኖስ  
post lantern



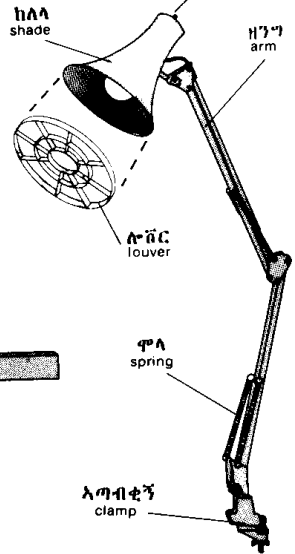
wall lantern



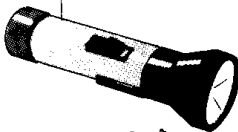
drop light



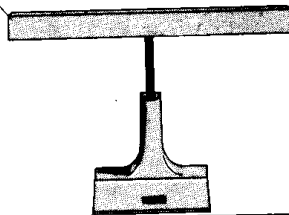
ተስተካካይ አምጽፋ  
adjustable lamp  
ማብሪያ ማጥፊያ  
on-off switch



የጅ ባትሪ  
flashlight



የጠረጴዛ መብራቶ  
desk lamp



የብርቱቆ ለቃ  
glassware



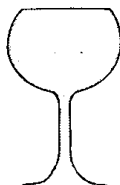
champagne flute



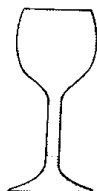
ሻምፓን ግላስ  
champagne glass



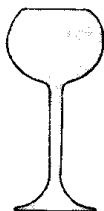
bordeaux



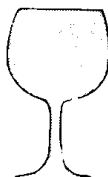
burgundy



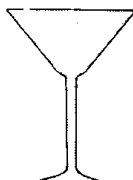
ነጭ ወይን ግላስ  
white wine



Alsace glass



water goblet



ኮክቴል  
cocktail



port



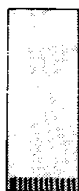
ብራንዲ  
brandy



ሊኒየር  
liqueur



old-fashioned



ኮሎን ግላስ  
highball



ቤራ ግንጫ  
beer mug

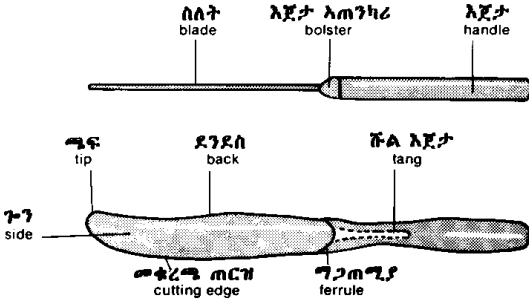


ብርራ  
decanter

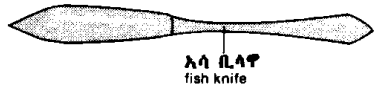
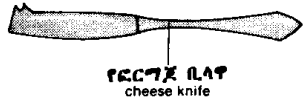


ብራግ የወጥቤት ቁሳቁስ  
silverware

ቢላዎ  
knife



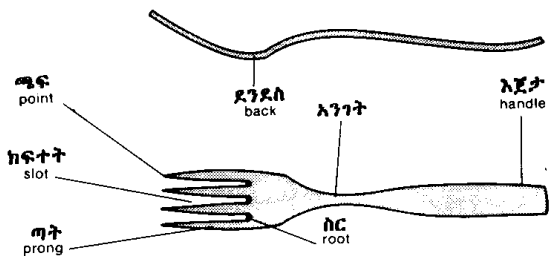
ዋና ዋና የቢላዎ አይነቶች  
major types of knives



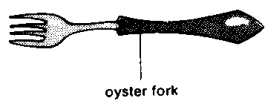
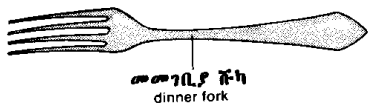
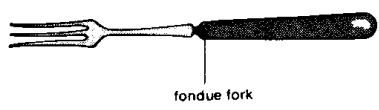
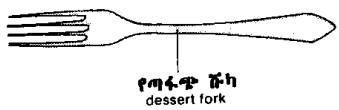
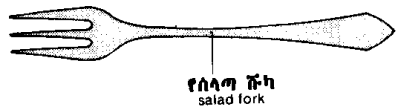
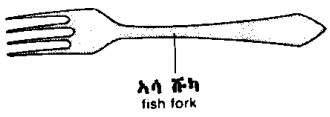


ብራግ የወጥቤት ቁሳቁስ  
silverware

ሹካ  
fork

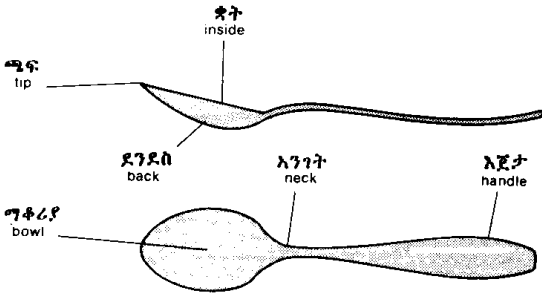


ዋናዎና የሹካ አይነቶች  
major types of forks

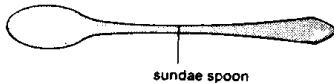
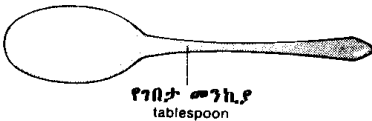
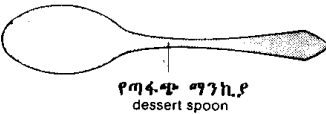


ብራማ የወጥቤት ቁሳቁስ  
silverware

ማንኪያ  
spoon

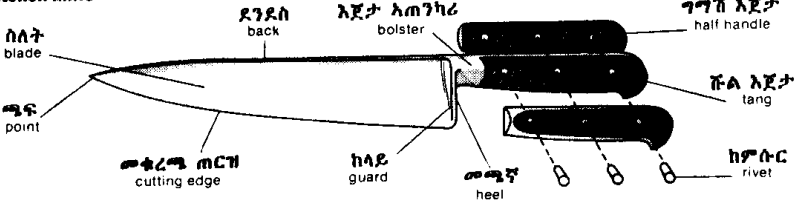


ዋና ዋና የማንኪያ አይነቶች  
major types of spoons

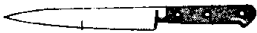


ወጥቤት ስታ  
kitchen utensils

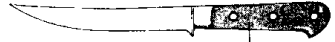
የወጥቤት ቢላዎ  
kitchen knife



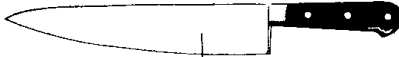
የወጥ ቤት ቢላዎ ስይነቶች  
types of kitchen knives



የፊሊቶ ቢላዎ  
filleting knife



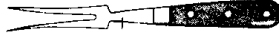
ስጥንት ግልፆፆ  
boning knife



ወጥቤት ቢላዎ  
cook's knife



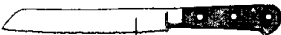
ሰሰርሰሪያ  
paring knife



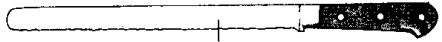
ትርፅ ግውጫ ጉካ  
carving fork



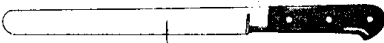
ሰከትከቻ  
cleaver



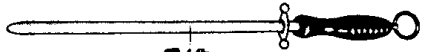
የጻቦ ቢላዎ  
bread knife



የአላግ ቢላዎ  
ham knife



ትርፅ ግውጫ ቢላዎ  
carving knife



ፑረድ  
sharpening steel



ሰላላይ  
peeler



ታተር  
butter curler



ኦስጥር ቢላዎ  
oyster knife



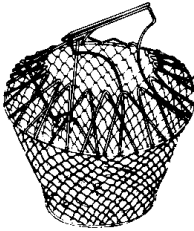
የፍራፍራ ቢላዎ  
grapefruit knife



ጊደር  
zester

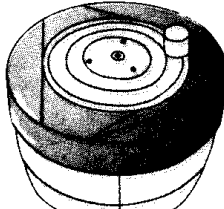
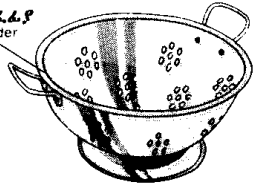
ወጥቤት ስቃ  
kitchen utensils

ለግጥላልና ለግጠንፊና  
for straining and draining

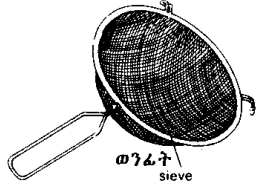


ሰላጣ ግጥሃኝ  
salad shaker

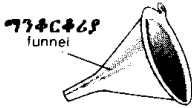
ግጠንፊና  
colander



ሰላጣ መለወጃ  
salad spinner



ወንፊት  
sieve



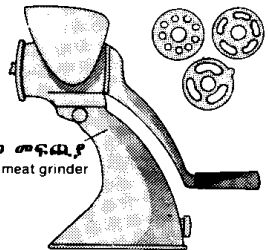
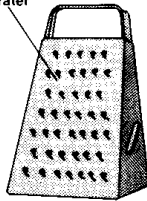
ግንቀርቀሪያ  
funnel

ለመፍጨትና ለመፈንፈን  
for grinding and grating



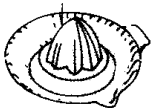
ፓስታ ግብጅያ  
pasta maker

መፈንፈኒያ  
grater

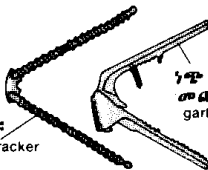


ስታ መፍጨያ  
meat grinder

የፍራፍሬ መቃመኒያ  
citrus juicer

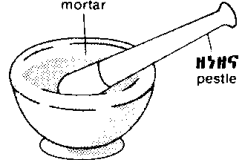


ለውዝ መፈንከኛ  
nutcracker



ነጭ ሽንኩርት መፍፍለኒያ  
garlic press

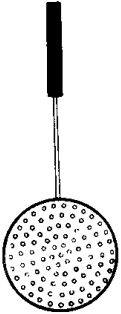
መቃጫ  
mortar



ዘንዘና  
pestle

ወጥቤት እቃ  
kitchen utensils

ልዩል የቤት ቁሳቁስ  
set of utensils



ወንጠፍት skimmer



potato masher  
ፎንች ጻጭ



draining spoon  
ግጠንፈፈያ ግንኪያ



turner  
ግንብጫ



spatula  
መሰቅሰቲያ



ladle  
ጥላፋ

ለመክፈት  
for opening



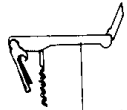
ቆርቆር መክፈት can opener



ቡሽ መክፈት  
lever corkscrew



ጠርመስ መክፈት  
bottle opener



ቪና መክፈት  
wine waiter corkscrew

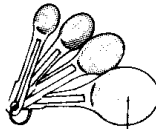
ለመለኪያ (ለመለካት)  
for measuring



የግብሥ ጊዜ ሰላት  
kitchen timer



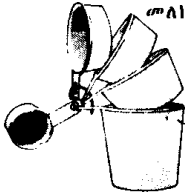
የእንቁላል መብልያ መቆጣጠሪያ ሰላት  
egg timer



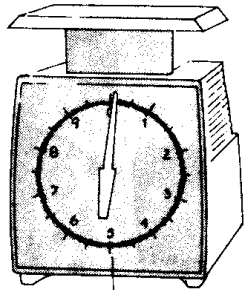
measuring spoons  
መለኪያ ግንኪያዎች



meat thermometer



መለኪያ ኩባያ  
measuring cups



የወጥቤት ግዛት  
kitchen scale

ወጥቤት ለቃ  
kitchen utensils

መጋገሪያ ለቃዎች  
baking utensils



ሊፕ መደመጫ rolling pin



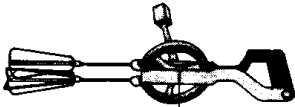
ኬክ መቀቢያ ብሩሽ  
pastry brush



መስበቂያ  
whisk



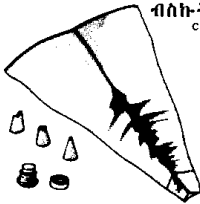
ሊፕ መቆረጫ ሽክርካሪት  
pastry cutting wheel



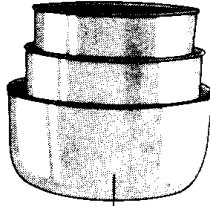
እንቁላል መምቻ  
egg beater



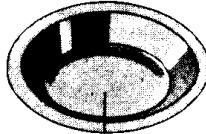
ወንፊት  
sifter



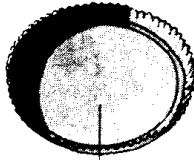
pastry bag and nozzles



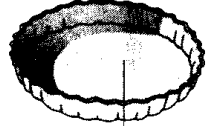
ግደባለቂያ ሳህን  
mixing bowls



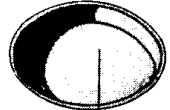
የፓይ ድስት  
pie pan



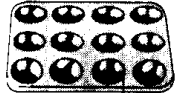
flan pan



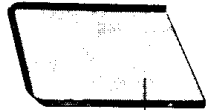
quiche plate



ኬክ መጋገሪያ  
cake pan



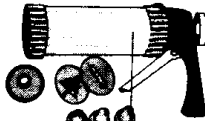
መሬን መጋገሪያ ምጣድ  
muffin pan



ብስኩት ምጣድ  
cookie sheet



ብስኩት መቆረጫ  
cookie cutters



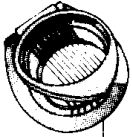
ብስኩት ቅርፅ ግውጃ  
cookie press



የኬክ ግንጫ ስሪንጋ  
icing syringe

ውጥቤት ለቃ  
kitchen utensils

የተለያዩ ለቃዎች  
miscellaneous utensils



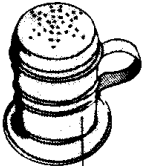
እንቁላ መሸንሸኛ  
egg slicer



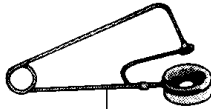
ሻይ ግጥለያ  
tea ball



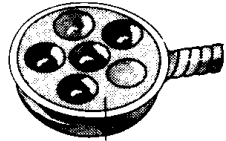
ለትክልት ግፅጃ ብሩሽ  
vegetable brush



መነሰነሻ  
dredger



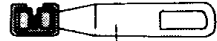
stoner



snail dish



snail tongs



መሳያ  
sharpener



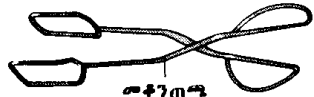
ፓስታ መቆጣጠሪያ  
spaghetti tongs



ፍሬ ፈንቅላ  
corer



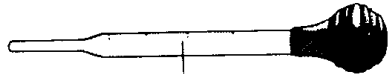
አይስክሪም ግንኪያ  
ice cream spoon



መቆጣጠሪያ  
tongs



ደሮ መምለላ  
poultry shears

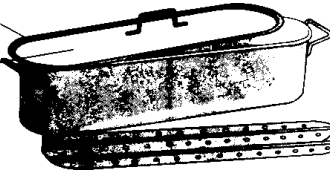


baster

ማብሰያ እቃዎች  
cooking utensils

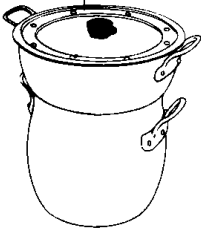
እሳ መቀቀያ  
fish poacher

እፊያ  
lid

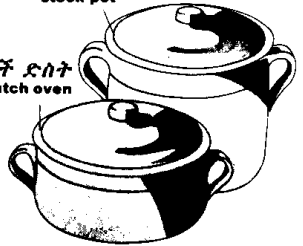


ድስት መጣጃ  
rack

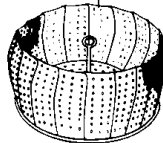
ድርብ ብረት-ድስት  
couscous kettle



የመረቅ ድስት  
stock pot

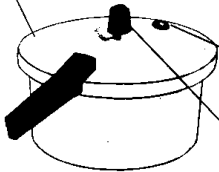


vegetable steamer



የደች ድስት  
dutch oven

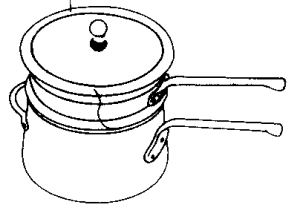
ፕራሻር ኩክር  
pressure cooker



ግስተንጊሻ ባልዞላ  
safety valve

ገፊት አስተካካይ  
pressure regulator

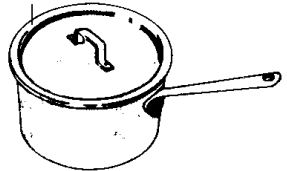
ድርብ ግፍያ  
double boiler



የአርስቶ ድስት  
roasting pans

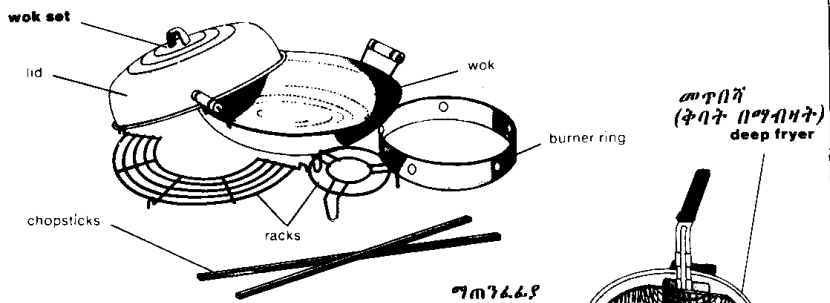


ድስት  
saucepan

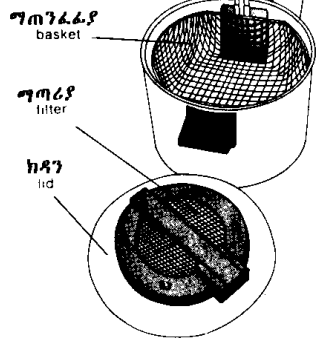




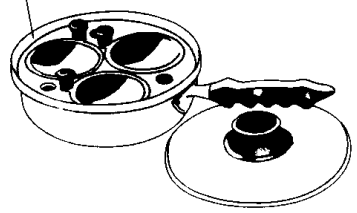
ማብሰያ ስራዎች  
cooking utensils



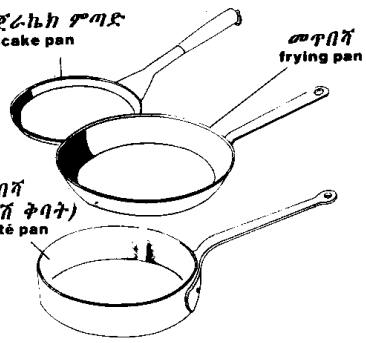
መጥበሻ  
(ቅባት በማብሰት)  
deep fryer



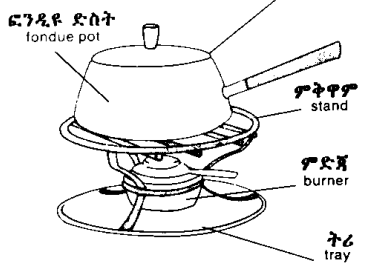
ፍርጥ ለንቁላል ቀቃይ  
egg poacher



የንጅራኬክ ምጣድ  
pancake pan

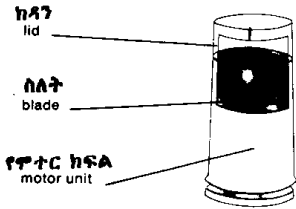


ፍንዳዩ ድስት ከነምድጃው  
fondue set

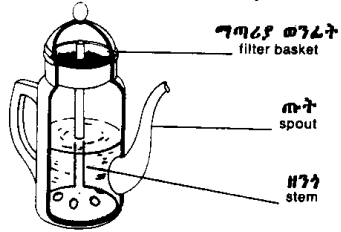


ቡና ግዘጋጃ  
coffee makers

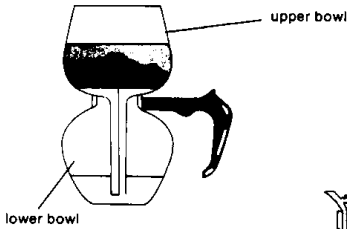
ቡና መፍጨያ  
coffee mill



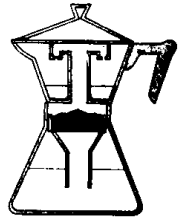
ቡና አስካኝ  
percolator



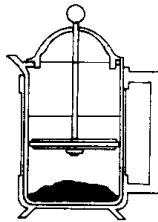
vacuum coffee maker



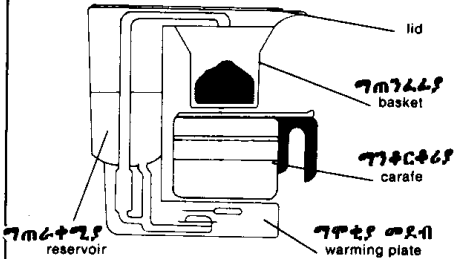
espresso coffee maker



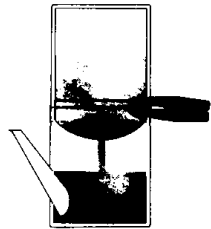
plunger



አተግቲክ ቡና ግፍያ  
automatic drip coffee maker

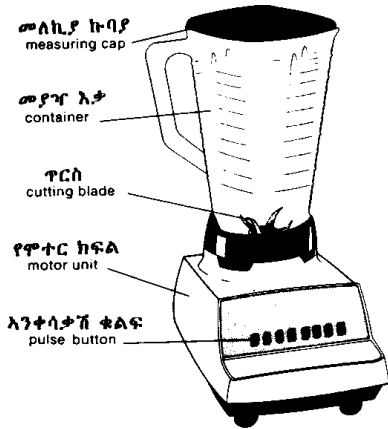


Neapolitan coffee maker

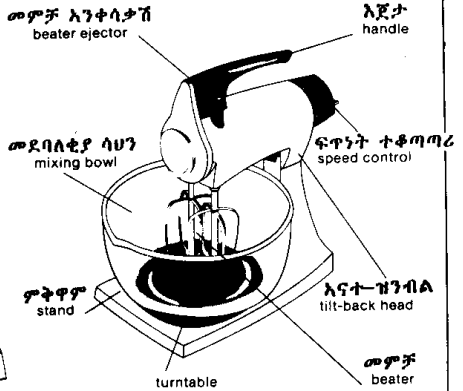


የቤት ውስጥ መሳሪያዎች  
domestic appliances

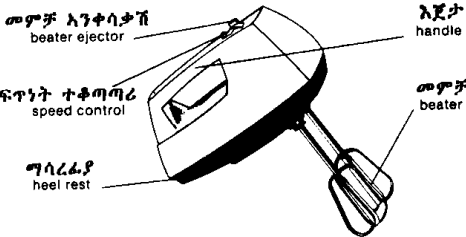
ግጥሃጃ  
blender



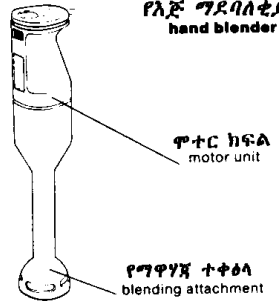
ኤሌክትሪክ መለወጃ  
table mixer



የእጅ መደባለቂያ  
hand mixer



የእጅ ግደባለቂያ  
hand blender



መምቻዎች  
beaters

ባለአራት ጣት መስበቂያ  
four pale beater



ጥምዝምዝ መምቻ  
spiral beater



የሲፕ መንጠቆ  
dough hook

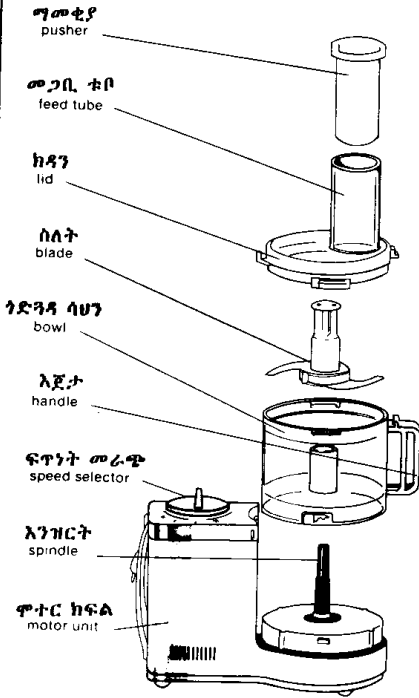


የሽቦ መምቻ  
wire beater

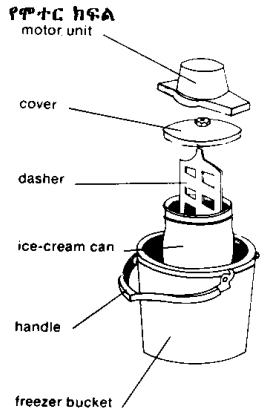


የቤት ውስጥ መሳሪያዎች  
domestic appliances

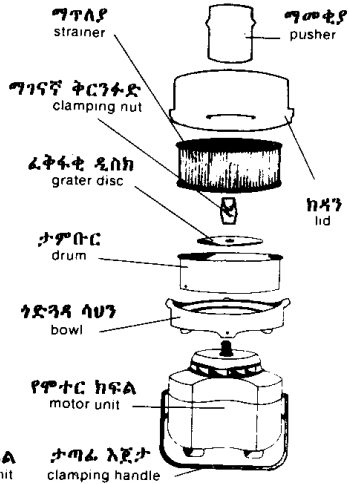
ምግብ መሰሪያ  
food processor



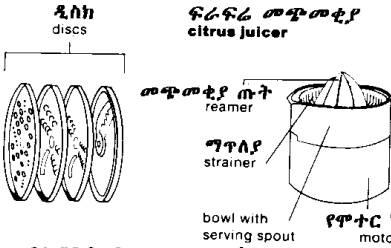
Ice-cream freezer



መጭመቂያ  
juicer



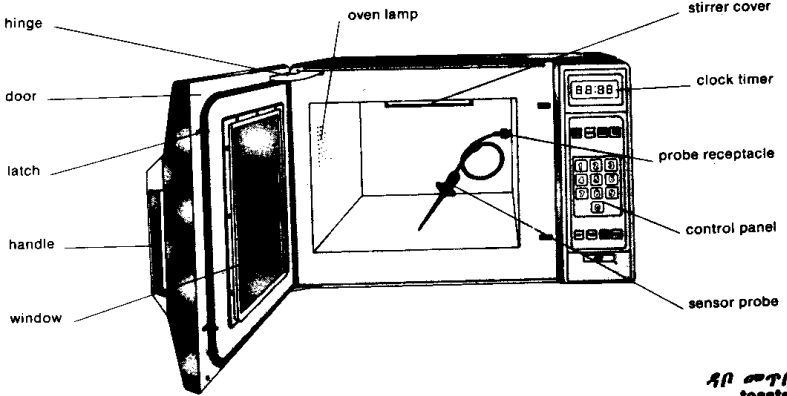
ፍራፍሬ መጭመቂያ  
citrus juicer



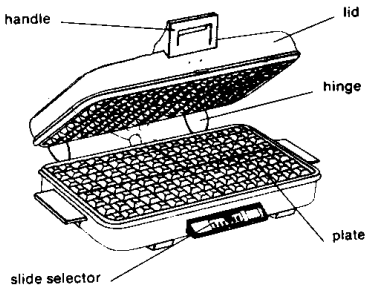
ባለግንቅርቆሪያ ጭጣቂ ማቅረቢያ

የቤት ውስጥ መሳሪያዎች  
domestic appliances

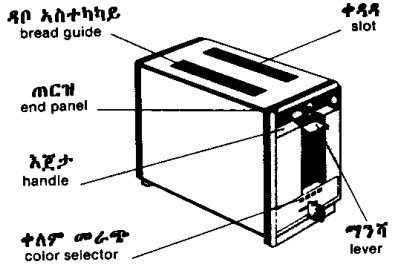
microwave oven



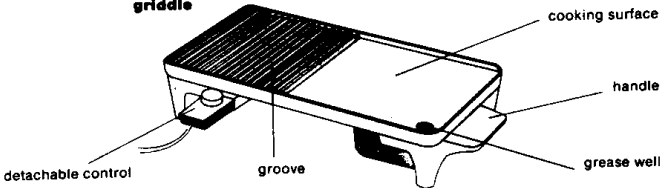
grill and waffle baker



ገባ መጥበኝ  
toaster

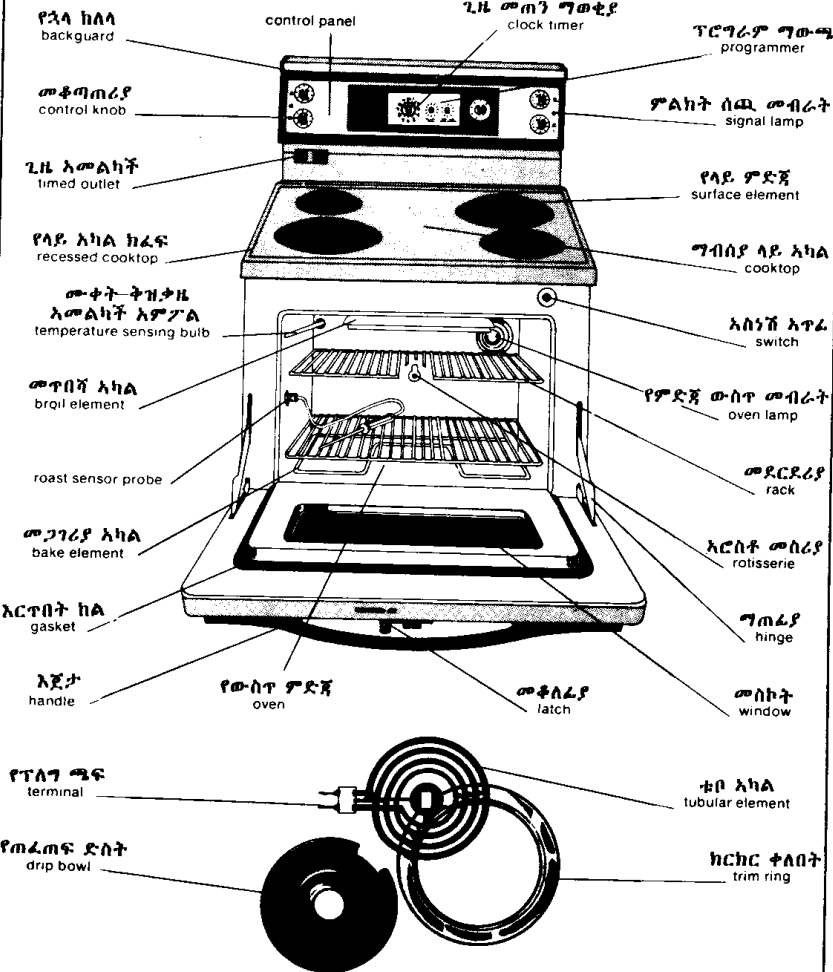


griddle



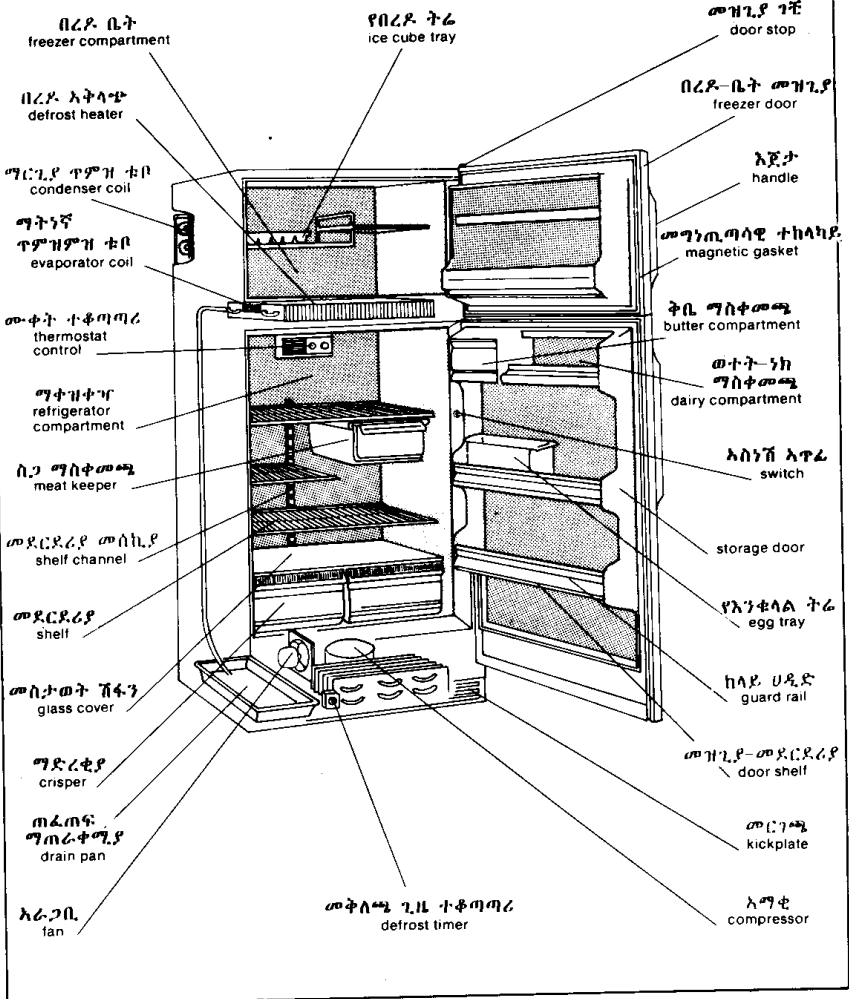
የቤት ውስጥ መሳሪያዎች  
domestic appliances

ቁም የኤሌክትሪክ ምድጃ  
electric range



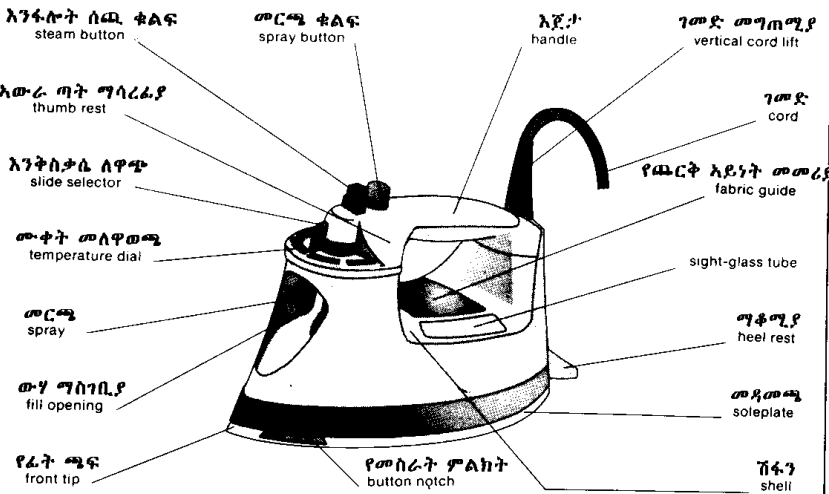
የቤት ውስጥ መሳሪያዎች  
domestic appliances

በረዶ-አልባ ማቀዝቀዣ  
frost-free refrigerator

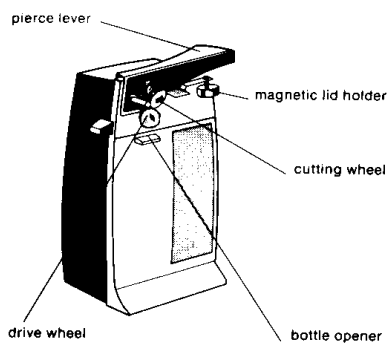


የቤት ውስጥ መሳሪያዎች  
domestic appliances

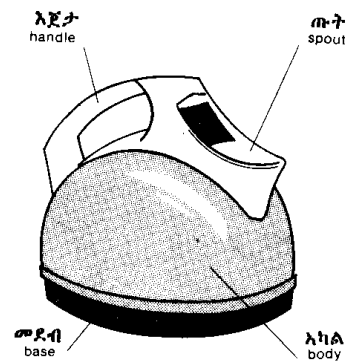
የእንፋሎት ካውያ  
steam iron



can opener



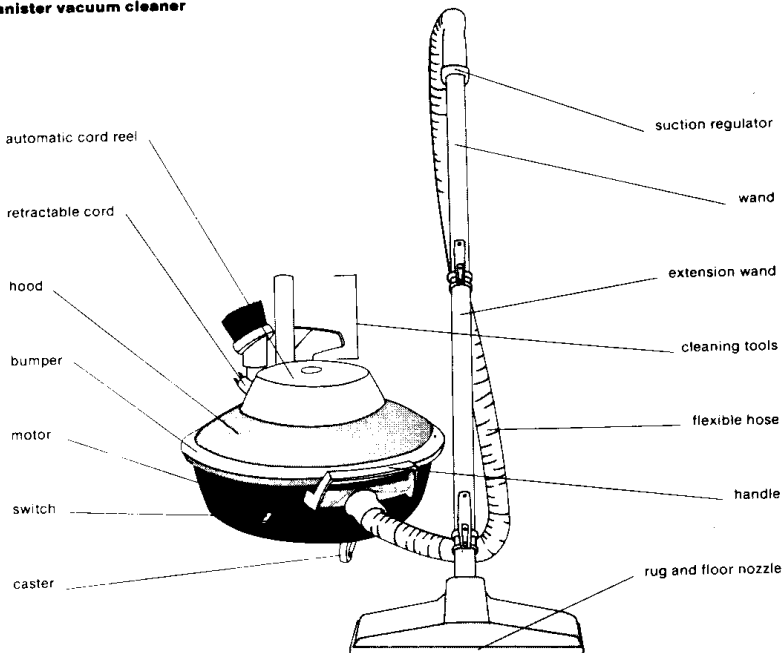
ጀብና  
kettle



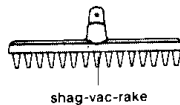
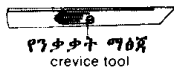


የቤት ውስጥ መሳሪያዎች  
domestic appliances

canister vacuum cleaner

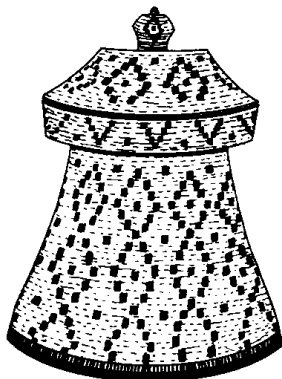
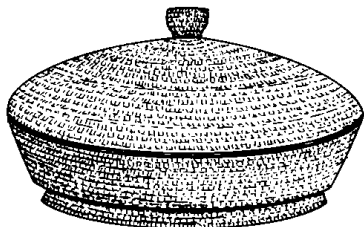


የፅዳት ቁሳቁስ  
cleaning tools



ባህላዊ የምግብ ማቅረቢያና መገልገያ

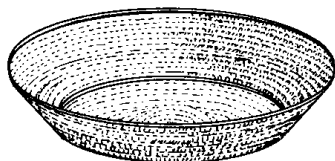
ሴግት



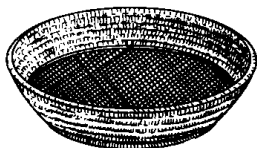
መሰብ



ሰፊድ



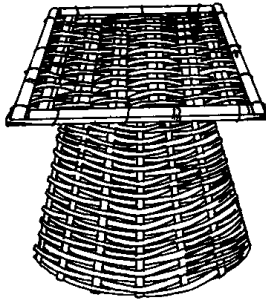
እንቅብ



ወንፊት

ባህላዊ የምግብ ማቅረቢያ መገልገያ

ጥራር



በዲቃ

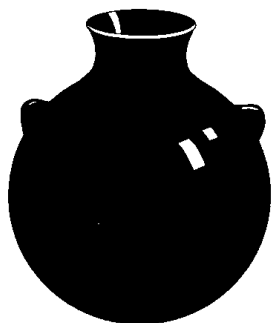


እርቦ



የማብሰያና የማቅረቢያ እቃ

ጋን



እንሰራ



ማሰሮ



ምጣድ



አኮንባሎ

ሸክላ ደስት



የማብሰያና የማቅረቢያ እቃ

የቡና ጀበና



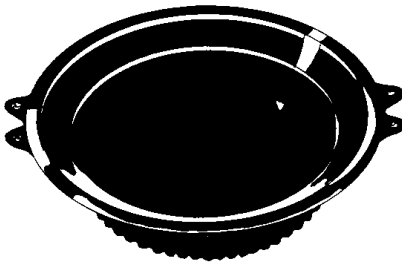
ፍንጃል (ሰኒ)



ጊርጊራ

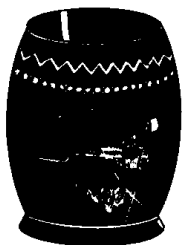


ጣባ

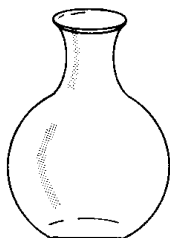


የአገር ባህሉ የመጠጫ እቃ

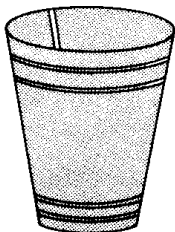
ሸክና



ብርሌ



ዋንጫ



ዕዋ

