



# Websocket server of VAST

**Version 1.0.0.3**

**2019/05/07**

© 2019 VIVOTEK Inc. All Right Reserved

*VIVOTEK may make changes to specifications and product descriptions at any time, without notice.*

*The following is trademarks of VIVOTEK Inc., and may be used to identify VIVOTEK products only: VIVOTEK. Other product and company names contained herein may be trademarks of their respective owners.*

*No part of this publication may be reproduced or utilized in any form or by any means, electronic or mechanical, including photocopying and microfilm, without permission in writing from VIVOTEK Inc.*

TABLE OF CONTENTS

---

TABLE OF CONTENTS .....1

1. OVERVIEW.....2

2. ARCHITECTURE DIAGRAM.....3

3. URL FORMAT .....4

4. SAMPLE .....5

VIVOTEK CONFIDENTIAL  
2019.05.07

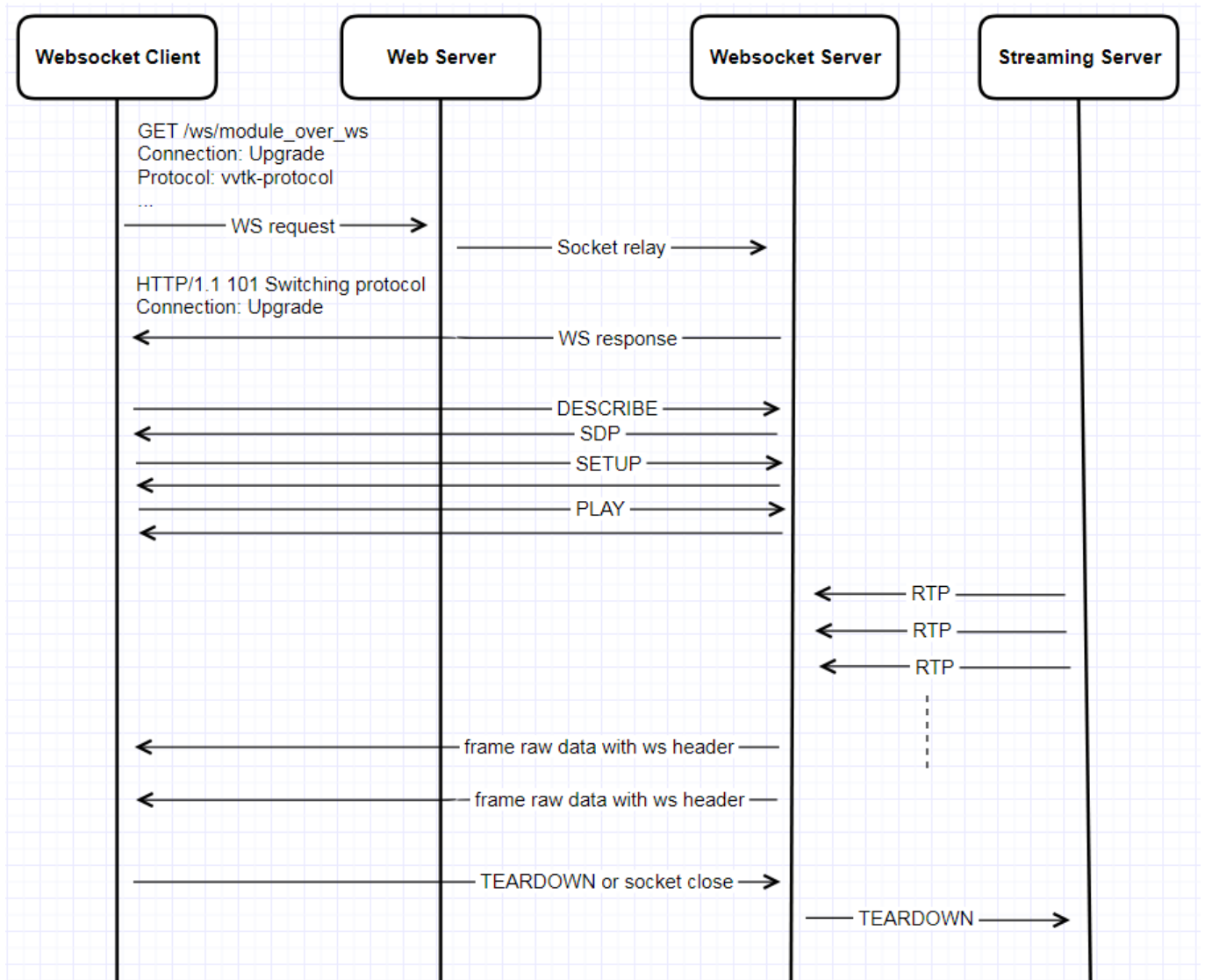
## 1. Overview

---

Websocket server can relay streaming from streaming server and doesn't need to create another port to listen connection. Websocket client just needs to send a GET message to http port (VAST default http port is 3454). To specify VIVOTEK format, the GET message must contain `"/ws/module_over_ws"` and `"Protocol: vvtk-protocol"`.

When sending WS request via GET method, it needs to carry authentication information which is your username and password for the VAST server. After authentication is accomplished, you should send a user-specified RTSP URL on DESCRIBE message to Websocket server. After RTSP handshake completed, client will receive the frame raw data.

## 2. Architecture Diagram



### 3. RTSP URL format

---

As mentioned previously, user should send a user-specified URL on DESCRIBE message to Websocket server after authentication is accomplished. The RTSP URL format is the same as VAST server.

Here are examples about the format of live and playback.

Live URL is

**ws://username:password@172.18.110.88:3454/Media/Live/Normal?camera=C\_1&streamindex=1,**  
where C\_1 means connection 1, streamindex = 1 means streaming index is 1.

Playback URL is

**ws://username:password@172.18.110.88:3454/Media/Database/Normal?HNAME=C\_1&STIME=20190507\_100000\_000,** where HNAME=C\_1 means connection1, STIME=xxx means playback start time(default use UTC time). User can add parameter "&LOCTIME=1" after URL to use local time for streaming. Here is the request URL:  
**ws://username:password@172.18.110.88:3454/Media/Database/Normal?HNAME=C\_1&STIME=20190507\_180000\_000 &LOCTIME=1.**

## 4. Sample

The sample web page in “dist” folder shows how to test Websocket Server.

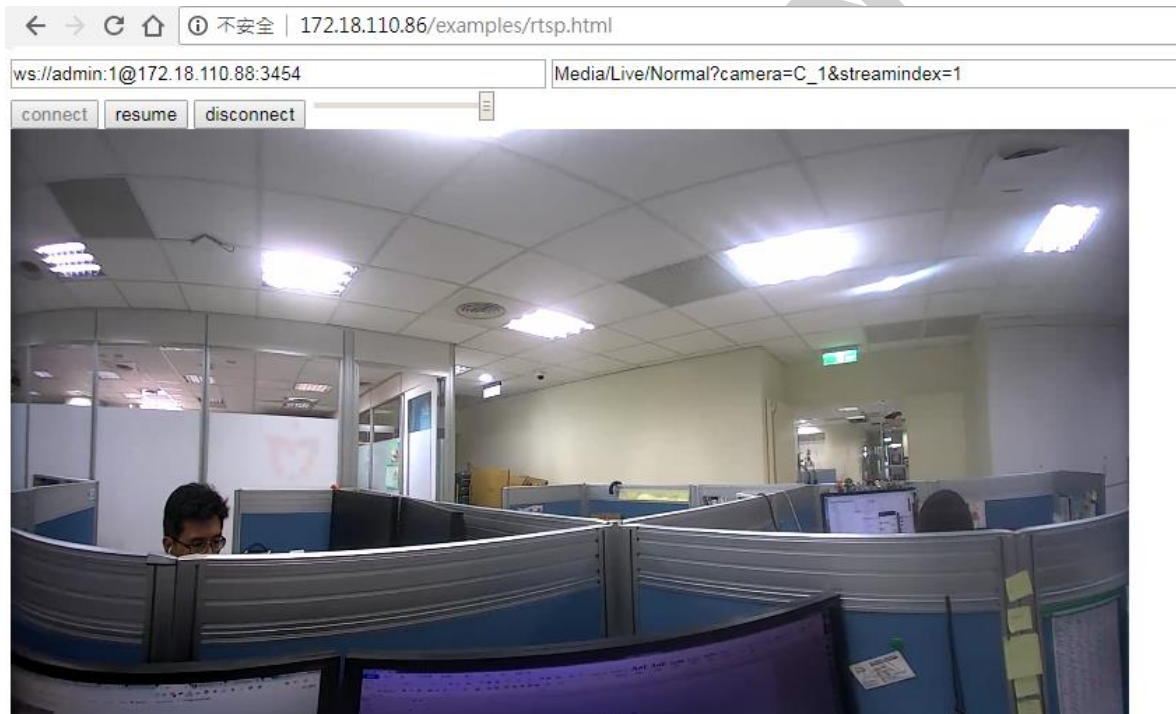
You have to do the following steps to run the sample application.

Step1: Install a web server like Nginx.

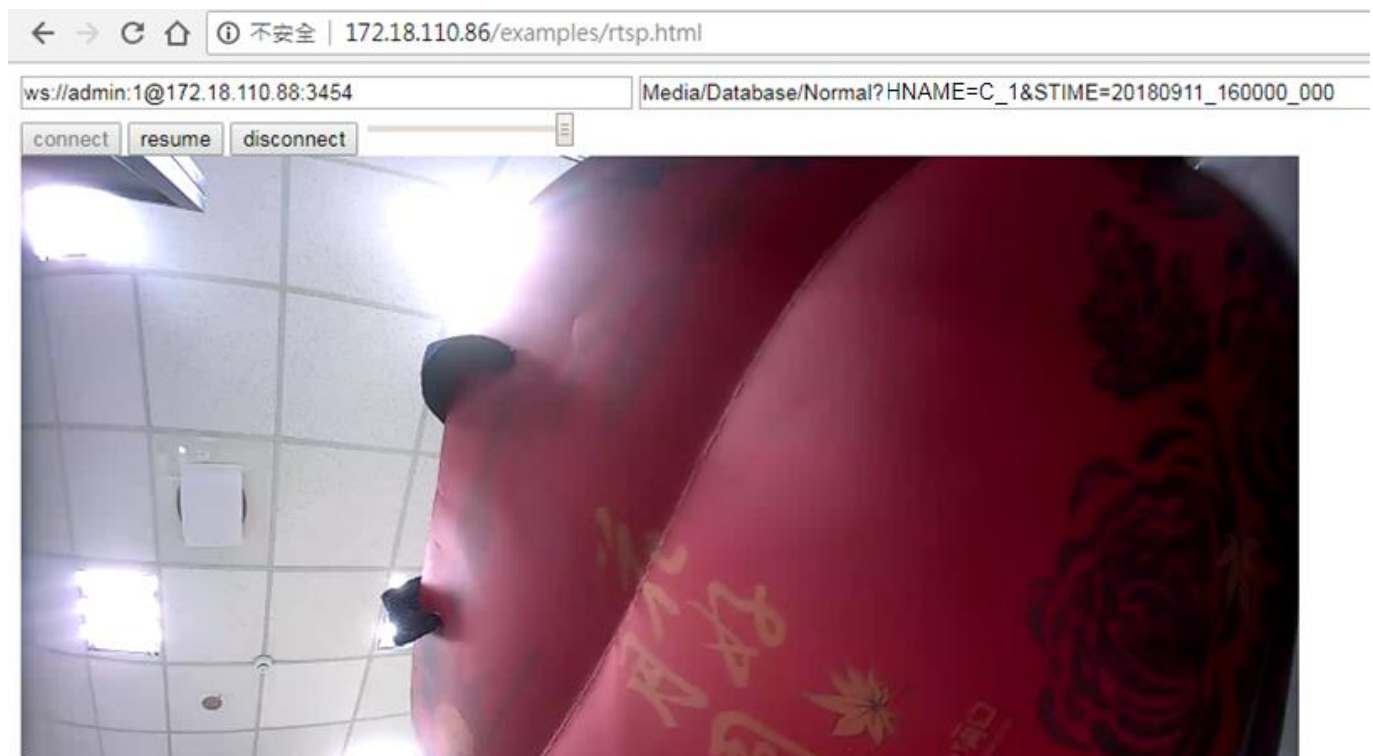
Step2. Copy all files under “dist” folder to /www folder

Step3. Open Chrome and type the address as following snapshot shows.

Live:



Playback:



More Information about web page sample please refer to websocket\_api.mht.