



***The Modern Mainframe...  
At the Heart of Your Business***

Using SOA to Build Your Next Generation Solution



© 2006 IBM Corporation

## **Service Oriented Finance's Business Problem**

We want to increase revenue by selling our car loans through external Brokers



**Service Oriented Finance  
CEO**

## Service Oriented Finance's Technical Challenges

How can Brokers access our existing car loan application?



Service Oriented Finance  
CIO

## Leverage Existing Investments

25% of the world's capital investment is in I/T\*. The only way to innovate in a cost-effective manner is to leverage these investments



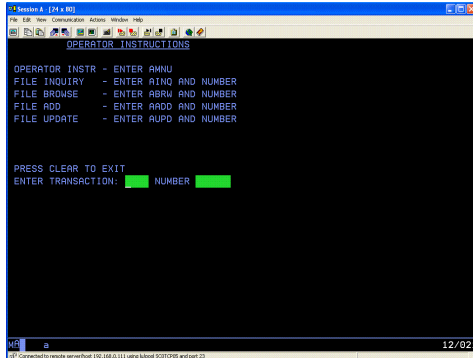
IBM

*"Many of the I/T assets required to enable an on-demand business already exist and have been supporting the business for years or even decades. Enabling these I/T assets to participate in integrated business processes is key to improving responsiveness".*

DH Brown Associates, Inc.  
Application Transformation: Leveraging Existing I/T Assets to Build Competitive Advantage (September 2004)

\* Does not include real estate or government assets

## Existing CICS Investment: SOF Customer Management System



We have invested millions of dollars in this asset



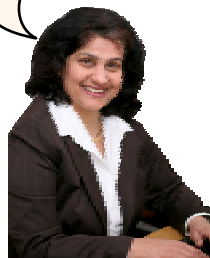
Service Oriented Finance  
CIO

Existing application consists of CICS programs accessed via "green screen" terminals.

How do we make this available to external Broker applications?

## Use SOA to Unlock Your Assets

We want to make portions of this application available to external Loan Brokers



Service Oriented Finance  
CIO

You can unlock your existing assets using a Service Oriented Architecture



IBM

## The Basics: What is SOA?

... a service?

A **repeatable business task** – e.g.,  
check customer credit;  
open new account



... **service oriented architecture (SOA)?**

An IT **architectural style** that supports  
integrating your  
business as linked  
services

"SOA impacts every aspect of IT and business."

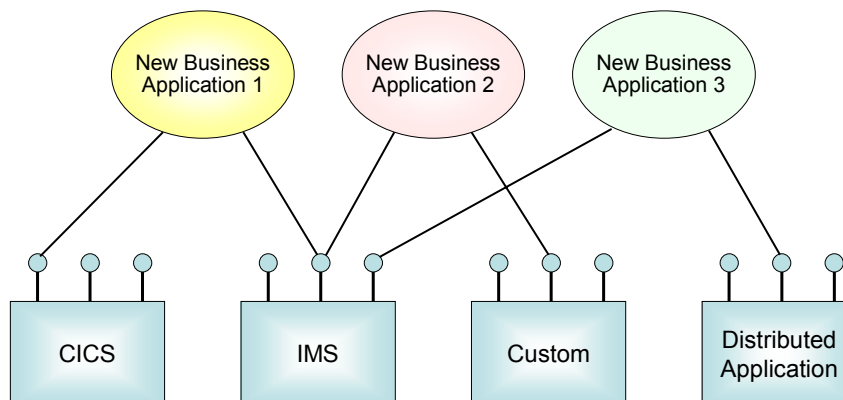
Gartner

02 - SOA - The Foundation of your Next Gen Sol v1.4.ppt

8

## Steps to SOA

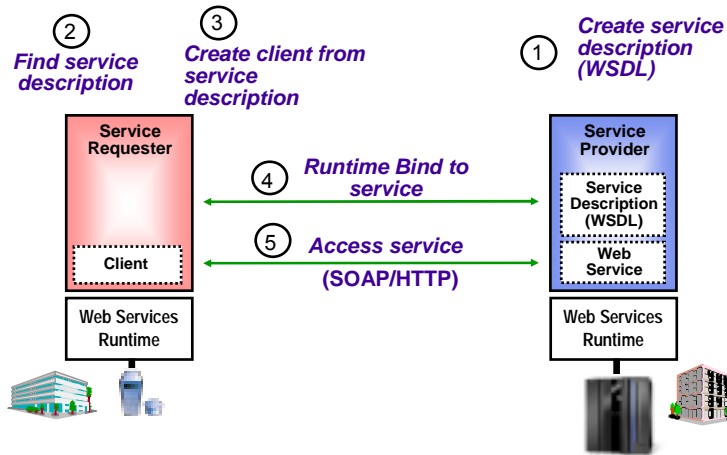
- Expose enterprise assets as services
- Create a rich environment for easy reuse
- Combine services to create new applications



02 - SOA - The Foundation of your Next Gen Sol v1.4.ppt

9

## Introduction to SOA: Web Services



02 - SOA - The Foundation of your Next Gen Sol v1.4.ppt

10

## Exposing CICS Applications as Web Services

So Web Services give me reusability and interoperability. But how do I get my CICS programs to talk Web Services?



Service Oriented Finance  
CIO

CICS TS Version 3.1 has built-in capabilities to expose programs as web services

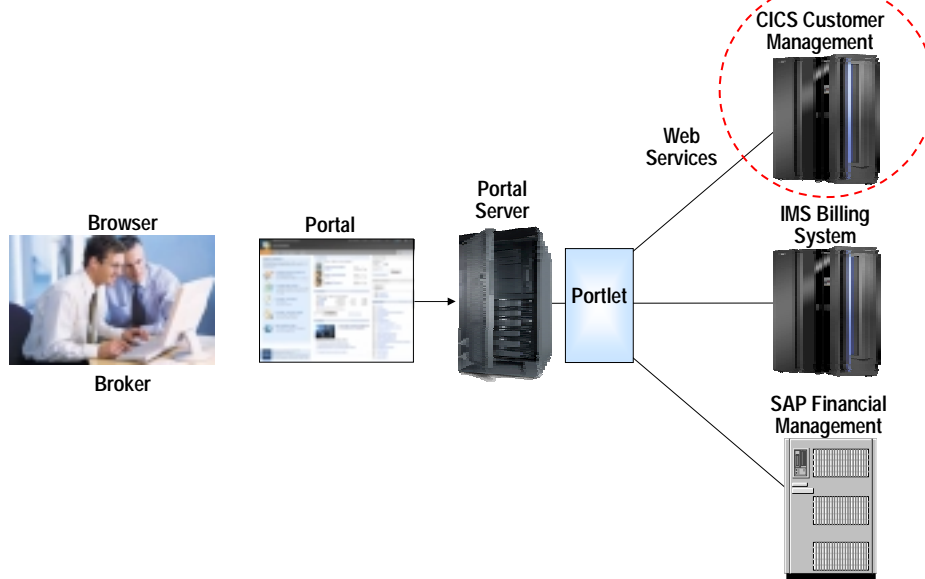


IBM

02 - SOA - The Foundation of your Next Gen Sol v1.4.ppt

11

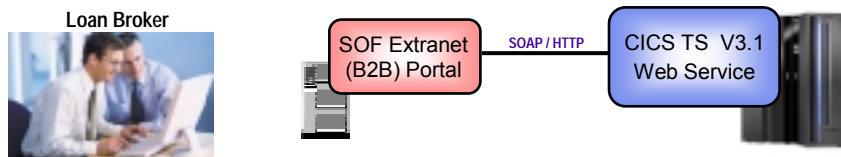
## Service Oriented Finance Solution Picture



02 - SOA - The Foundation of your Next Gen Sol v1.4.ppt

12

## DEMO: Broker Calls CICS Program Using Web Services



- Loan Brokers use the SOF Portal. The Portal talks to SOF's Loan application using web services

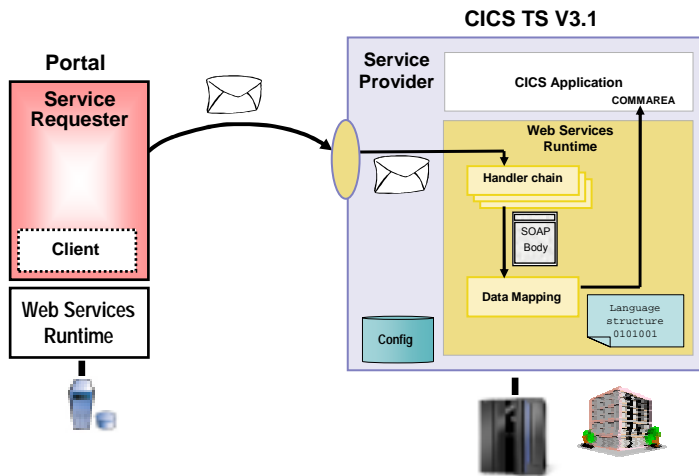
*Web Services expose CICS and IMS investments for a new generation of re-use.*

02 - SOA - The Foundation of your Next Gen Sol v1.4.ppt

13

## How Did the CICS Web Service Work?

1. Receive SOAP request
2. CICS Web Services runtime handles the message
3. Handler chain processes SOAP headers
4. Data Mapping transforms XML into bytes, calls server app



02 - SOA - The Foundation of your Next Gen Sol v1.4.ppt

14

## CICS Web Services

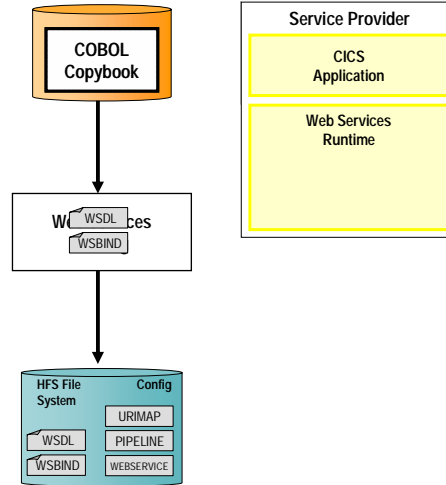
- Native Web Services capability offered by CICS
  - ▶ Extends CICS applications directly to a Service Oriented Architecture
  - ▶ A CICS application can now be a Web service provider and requester
- Highlights
  - ▶ Fully integrated into CICS
    - Resource Definition using CICS admin screen, problem determination, monitoring & statistics
    - New tooling support for easier application development
  - ▶ Simple configuration and system management
- Rich set of Web services standards supported
  - ▶ SOAP 1.1 and 1.2 to send and receive Web services messages
  - ▶ WS-I Basic Profile 1.0a for interoperability with between providers and requesters using SOAP
  - ▶ WS-Coordination extensible coordination framework, and specific coordination of transactions
  - ▶ WS-AtomicTransaction for transaction coordination
  - ▶ WS-Security for authentication and encryption of all or part of a message
- SOAP requests can flow over HTTP or WebSphere MQ transports

02 - SOA - The Foundation of your Next Gen Sol v1.4.ppt

15

## Development Steps to Expose CICS Application as a Web Service Provider

1. Start with COBOL copybook
2. Generate WSDL from copybook
3. Copy files to host file system.
  1. Use standard CICS supplied PIPELINE definition
4. CICS automatically installs other related definitions
5. CICS application is now web service enabled

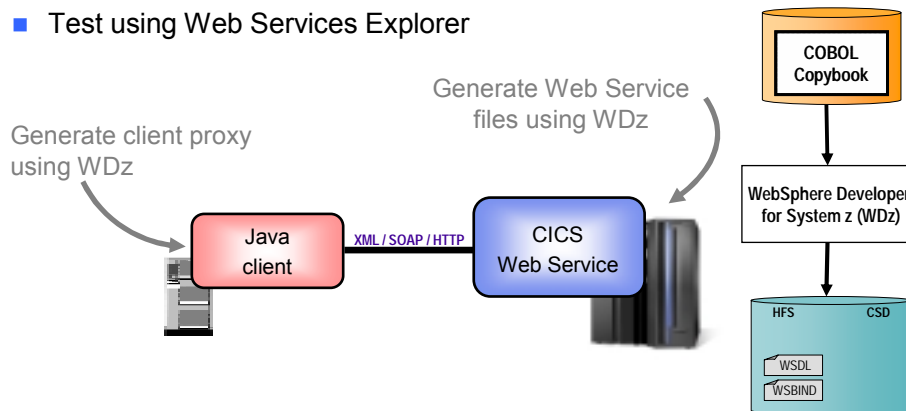


02 - SOA - The Foundation of your Next Gen Sol v1.4.ppt

16

## DEMO: Use WebSphere Developer for System z to Expose CICS Program as Web Service

- Generate WSDL and WSBIND files
- Deploy files to host file system
- Test using Web Services Explorer



02 - SOA - The Foundation of your Next Gen Sol v1.4.ppt

17



## Bank of Montreal: Reuse Existing Services

### Challenge: Increase Efficiency and Customer Satisfaction



#### Delivering Business Value:

- Re-used CICS assets with new Web services interfaces into new CRM business process
- New front-end application provided real-time view of improvements in cross-sell and up-sell opportunities
- Revitalize customer relationship management across multiple banking channels

#### Through greater IT flexibility:

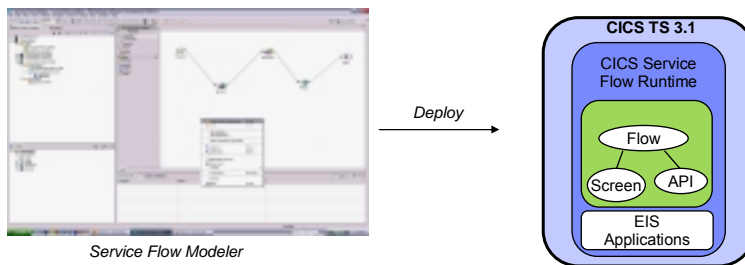
- Reuse existing IT assets through service-enablement
- Modeled options for new system to support hundreds of transactions per second
- Build service-oriented applications more easily

## How About a Sequence of CICS Screens? CICS Service Flow Feature

- Allows you to sequence fine-grained CICS program interactions into a higher level, coarse-grained unit.
  - ▶ This can then be exposed as a web service
- Consists of:
  - ▶ CICS Service Flow Runtime in CICS TS 3.1
    - Runtime in CICS executes a sequence of terminal or commarea based interactions
  - ▶ Service Flow Modeler in WebSphere Developer for z
    - Visually design flow
    - Tool can record flow as user navigates through BMS screens
    - Use Web Services wizards and test facilities in WDz

## Service Flow Modeler

- Visual Designer in WDz
  - ▶ Wire CICS applications together into a reusable flow
  - ▶ Wire sequence of BMS screens into a reusable flow
- Expose flow as web service
  - ▶ Can be called from other larger business process flows
- CICS deployment
  - ▶ Deploy to Service Flow Runtime in CICS TS 3.1



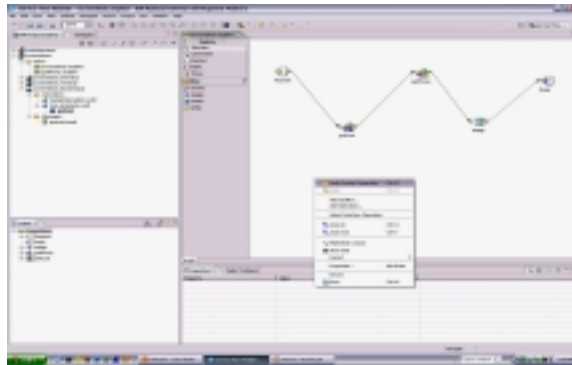
Service Flow Modeler

02 - SOA - The Foundation of your Next Gen Sol v1.4.ppt

21

## DEMO: Service Flow Modeler

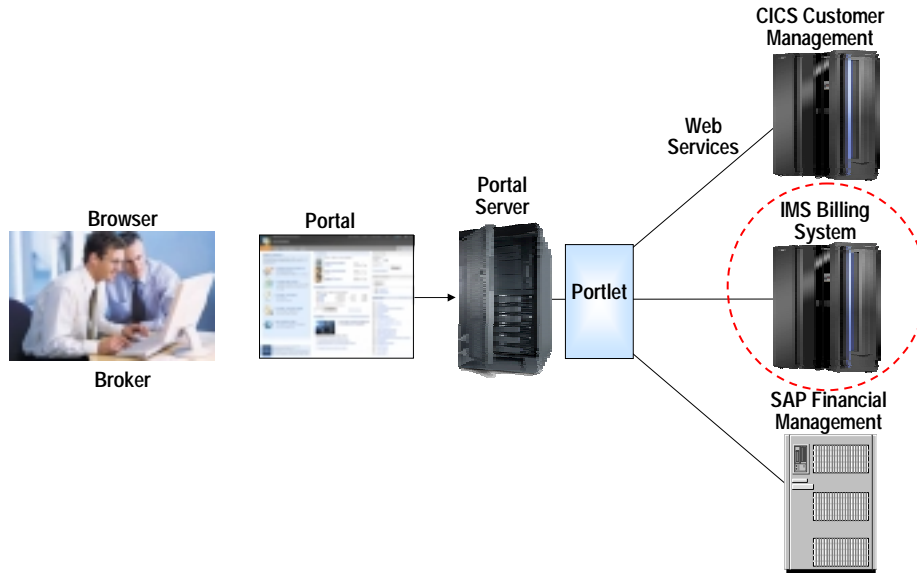
- Use Visual Designer in WDz
  - ▶ Record Screen interactions
  - ▶ Wire CICS programs together



02 - SOA - The Foundation of your Next Gen Sol v1.4.ppt

22

## Service Oriented Finance Solution Picture



02 - SOA - The Foundation of your Next Gen Sol v1.4.ppt

24

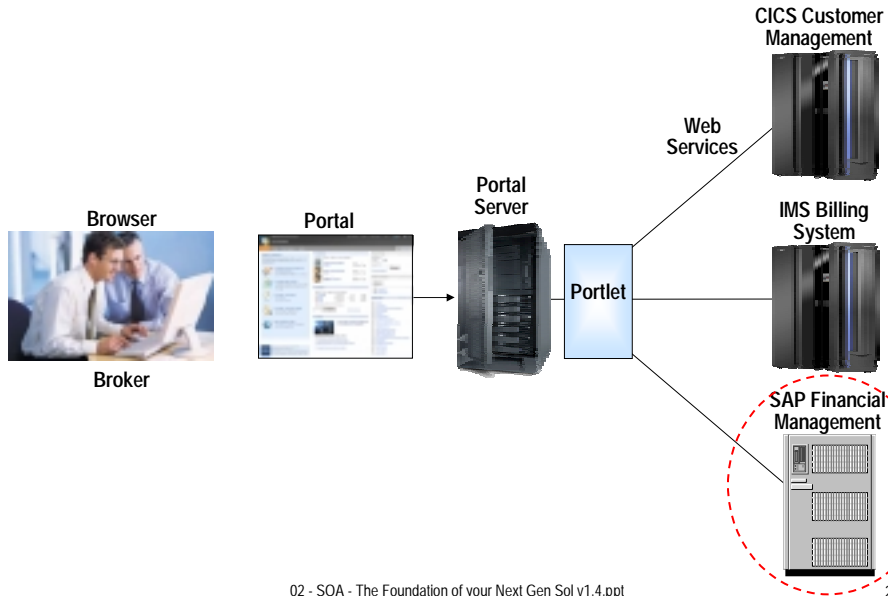
## What About IMS Assets? Use the IMS SOAP Gateway

- Integrates IMS assets into SOA by providing a standard Web Services interface
  - ▶ Expose your IMS application as a web service with easy deployment and configuration
    - No programming needed
- Tooling support
  - ▶ IBM WebSphere Developer for System z generates Web Service artifacts like WSDL and XML converters
    - From COBOL copybook of IMS application
- Transforms XML data without changing IMS application
  - ▶ IMS Connect XML Adapter transforms XML data
    - No need to modify the IMS application code

02 - SOA - The Foundation of your Next Gen Sol v1.4.ppt

25

## Service Oriented Finance Solution Picture



02 - SOA - The Foundation of your Next Gen Sol v1.4.ppt

27

## What About Other Enterprise Assets without Native Web Services Capabilities?

How do we create services that connect to our other backend systems like SAP?



Service Oriented Finance  
CIO

IBM provides a comprehensive set of adapters.



IBM

02 - SOA - The Foundation of your Next Gen Sol v1.4.ppt

28

## What Do Adapters Provide?

- Provide a consistent framework for access to back-end systems and technologies
  - ▶ Translates an abstracted interface into target-specific protocols, APIs or data formats
  - ▶ Abstracted interface encapsulates business functions and events in the form of business objects
  
- Consistent configuration, deployment, and administration
  
- A standardized framework enables WebSphere development tools to generate code that would otherwise be manual with third party adapters

## IBM Adapter Portfolio

Adapter Category			
<b>Application</b>	<ul style="list-style-type: none"> <li>• <b>Ariba Buyer</b></li> <li>• Clarify CRM</li> <li>• eMatrix</li> <li>• i2</li> <li>• <b>JD Edwards OneWorld</b></li> </ul>	<ul style="list-style-type: none"> <li>• <b>MetaSolv Applications</b></li> <li>• <b>Oracle Applications</b></li> <li>• <b>PeopleSoft Enterprise *</b></li> <li>• Portal Infranet</li> </ul>	<ul style="list-style-type: none"> <li>• <b>SAP Exchange Infrastructure</b></li> <li>• <b>SAP Software *</b></li> <li>• <b>Siebel eBusiness Applications *</b></li> <li>• <b>SunGard FRONT ARENA</b></li> </ul>
<b>Technology</b>	<ul style="list-style-type: none"> <li>• <b>COM</b></li> <li>• <b>CORBA</b></li> <li>• Complex Data</li> <li>• EDI</li> <li>• <b>Enterprise Java Bean</b></li> <li>• DTS</li> <li>• E-mail</li> <li>• Exchange</li> </ul>	<ul style="list-style-type: none"> <li>• Fix Protocol</li> <li>• <b>Flat Files *</b></li> <li>• Lotus Domino</li> <li>• Healthcare Protocols</li> <li>• HTTP</li> <li>• <b>i-Series</b></li> <li>• <b>JDBC *</b></li> <li>• JMS</li> </ul>	<ul style="list-style-type: none"> <li>• SWIFT</li> <li>• TCP/IP</li> <li>• <b>Web Services</b></li> <li>• WebSphere MQ</li> <li>• WebSphere Message Broker</li> <li>• WebSphere MQ Workflow</li> <li>• <b>XML</b></li> </ul>

Adapter development kit available for developing custom adapters

Notes:

Adapters in **bold** can introspect target application/technology

\* Both Java Connection Architecture (JCA) and Java Message Service (JMS) adapter versions provided

\*\* Only available as a Java Connection Architecture (JCA) adapter

## Business Problem Solved

We are getting hundreds of new customers through our external brokers



Service Oriented Finance  
CEO

SOA allowed us to quickly unlock our core application assets for reuse



Service Oriented Finance  
CIO

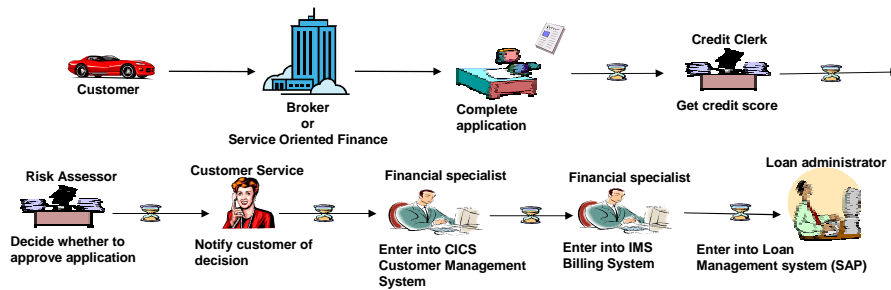
## Service Oriented Finance's Technical Challenges

1. How can Brokers access our existing car loan application?
2. How do I optimize the existing process so we are ready to handle a large increase in the number of car loan requests?



Service Oriented Finance  
CIO

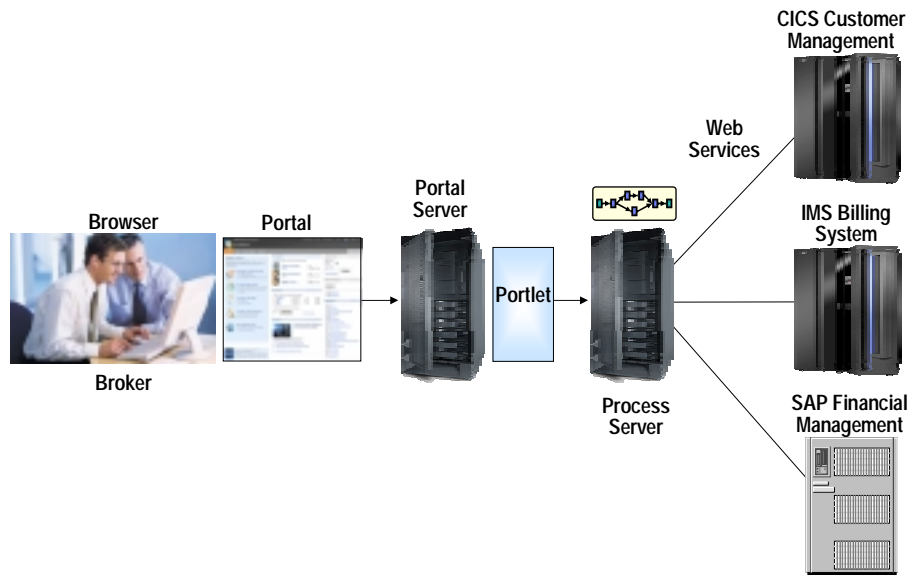
## Current Process for New Car Loans



Reasons current process isn't ready for increased amount of business:

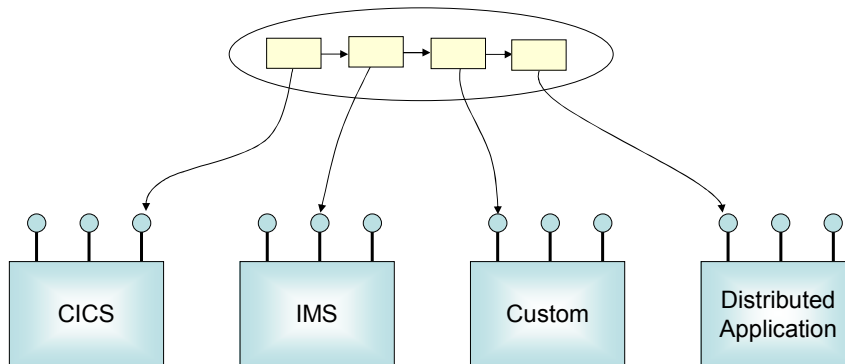
- Manual process won't scale
- Manual data entry results in errors
- Multiple manual steps makes it difficult to determine status of any particular loan request

## Service Oriented Finance Solution Picture



## Next Step to SOA

- Combine exposed services to innovate new cross-system business functions
- Use IBM Middleware to quickly achieve business process integration, portal integration, and data integration



02 - SOA - The Foundation of your Next Gen Sol v1.4.ppt

35

## WebSphere Integrated Framework for Next Generation Process Management

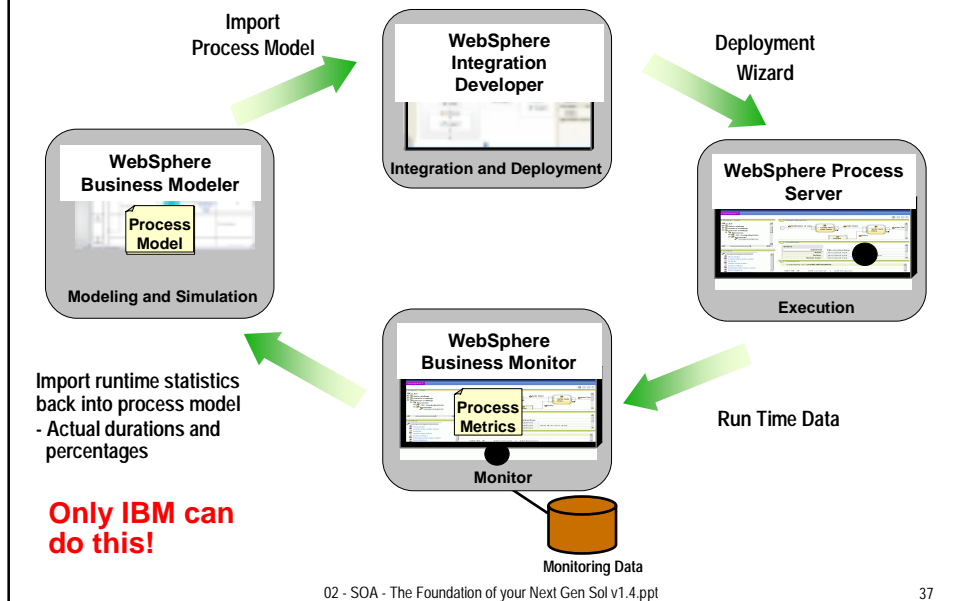
- 1. Model** the solution using **WebSphere Business Modeler**
  - Verify that proposed solution will meet the business objectives.
  - Gain agreement with executives, business owners, and development
- 2. Develop** (assemble) the solution using **WebSphere Integration Developer**
  - Develop Loan Application solution
  - Implement Key Performance Indicators to measure business results
- 3. Deploy** the solution onto **WebSphere Process Server**
  - Deploy to integration server that supports all aspects of integration
  - Execute on server that is reliable, scalable, secure, and based on open standards
- 4. Manage** the deployed solution using **WebSphere Business Monitor**
  - Monitor processes to identify and fix problems, delays
  - Review Key Performance Indicators to ensure business objectives are met

02 - SOA - The Foundation of your Next Gen Sol v1.4.ppt

36

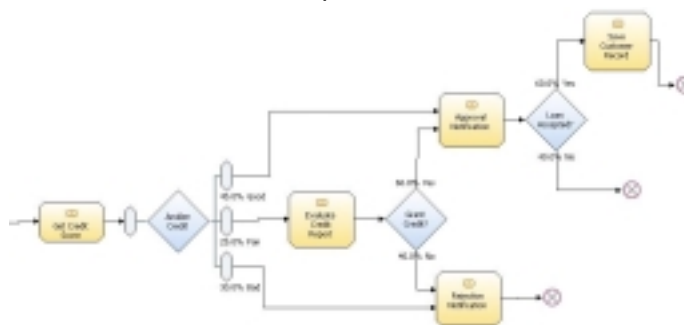


## Closed Loop For Continuous Improvement



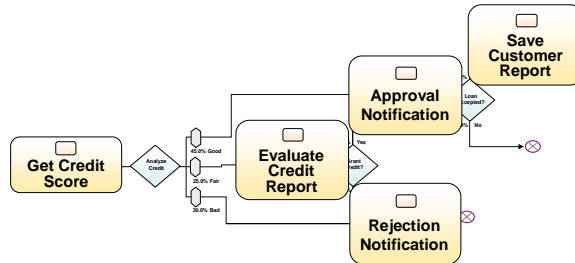
## Will the New Process Meet Business Objectives? Model the New Process

Solution: WebSphere Business Modeler



- Clearly define and document business requirements
- Graphically design the way processes will work
- Can include both human and automated steps
- Model the things that affect performance
  - ▶ Tasks, costs, times, resources
- Model the things that measure performance
  - ▶ Key Performance Indicators (KPIs)
- Simulate your model before it is developed
  - ▶ Allows you to identify bottlenecks
- Assess achievement of business objectives

## Model Flow Needs to be Completed with Programming Assets



- Model is converted into a structured language (BPEL) flow
  - ▶ WebSphere Business Modeler generates BPEL
- Programmer uses WebSphere Integration Developer
  - ▶ Imports BPEL from modeler
- Model now needs to be completed by programmers to provide:
  - ▶ Web service for Get Credit Score
  - ▶ Service for updating CICS, IMS and SAP
  - ▶ Assign role for each human step
  - ▶ Data maps for each step
  - ▶ Automatically generate executables for Deployment to WebSphere Process Server (via EAR)

## Use WebSphere Integration Developer to Build the Process

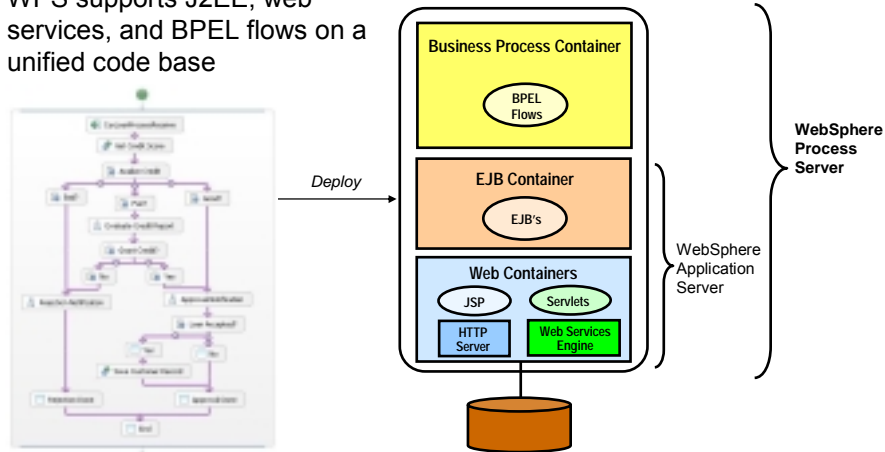
- Graphically describe business process flow in Business Process Execution Language (BPEL)
- Drag and drop services into process flow (automatic binding)
- Automatic human workflow support
- Built-in Unit Test Environment
- Built-in Process Debugger
- Generate and deploy to runtime server
- Flow may be invoked as web service, EJB, or message driven bean

Process from Modeler (in BPEL)



## The Completed Process Runs on WebSphere Process Server (WPS)

- The completed BPEL process can be deployed easily to WPS
- WPS supports J2EE, web services, and BPEL flows on a unified code base



02 - SOA - The Foundation of your Next Gen Sol v1.4.ppt

41

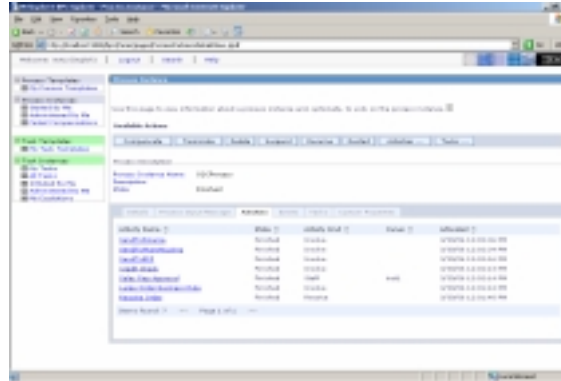
## WebSphere Process Server - Highlights

- Service Oriented Architecture platform
  - ▶ A single integrated platform
  - ▶ A uniform invocation programming model
  - ▶ A uniform data representation model (Business Objects)
  - ▶ Powerful tools to build and reuse standard components
- WebSphere Application Server Foundation
  - ▶ Clustering, failover, high availability and robust platform
  - ▶ Single administration environment
- Business Processes
  - ▶ WS-BPEL standard
- Powerful Staff Components for Human Workflow
  - ▶ Participating / Originating / Ad-Hoc Tasks
  - ▶ Multi-level escalation
  - ▶ Client components out-of-the box
- Business State Machines, Business Rules & Transformations
  - ▶ Advanced services to build integration solutions

02 - SOA - The Foundation of your Next Gen Sol v1.4.ppt

42

## DEMO: Run the New Car Loan Process



- Submit new loan application through Portal
- Process-level monitoring
- Human workflow – Work list gets populated with tasks

## Run the Process on System z

What platform should I use to run my Next Generation processes?



Service Oriented Finance  
CIO

System z is an ideal platform for your SOA infrastructure



IBM

## Why SOA on System z?

### 1. Qualities of Service

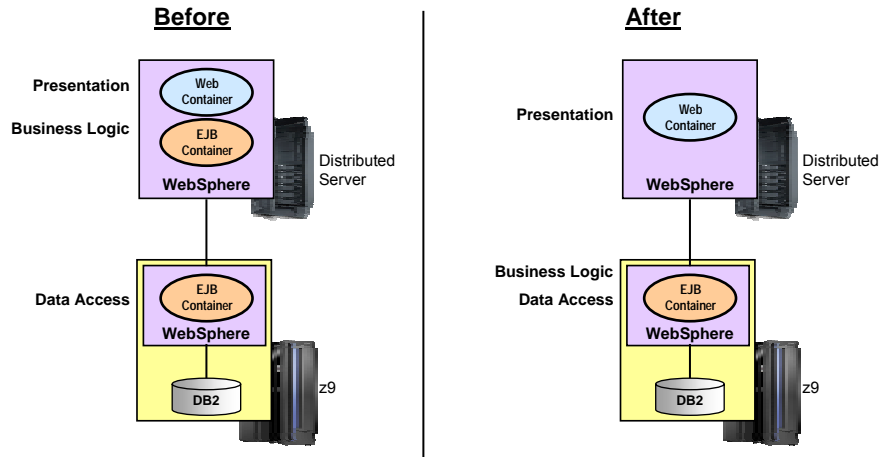
- An effective SOA implementation requires very high Quality of Services (QoS) from the underlying environment
  - ▶ Continuous Availability/Disaster Recovery
  - ▶ Scalability and Clustering
  - ▶ Rock solid Security
  - ▶ Workload Management to handle peak demand
- *These are fundamental characteristics of System z, making it an ideal platform to deploy an SOA solution*
- IBM's core SOA framework runs on z/OS
  - ▶ WebSphere Application Server
  - ▶ WebSphere Process Server
  - ▶ WebSphere Portal Server
  - ▶ WebSphere Enterprise Service Bus

## Why SOA on System z?

### 2. Co-location

- Typically the mainframe already houses the core applications and data that provide a competitive advantage to the business
  - ▶ Quickly expose them as services, and continue the QoS the business depends on
- Having the Process Server and Enterprise Service Bus in close proximity to the assets they access provides better performance and throughput
- HiperSockets technology means less network overhead
  - ▶ Memory to memory communication

## Proximity to Data Large Transportation Company Benchmark



- **Advantages of refactoring business logic to be co-resident with z/OS data**
  - ▶ Average CPU time per EJB transaction was reduced by over 77%
  - ▶ Number of bytes of data transferred per EJB transaction was reduced by 99%

02 - SOA - The Foundation of your Next Gen Sol v1.4.ppt

47

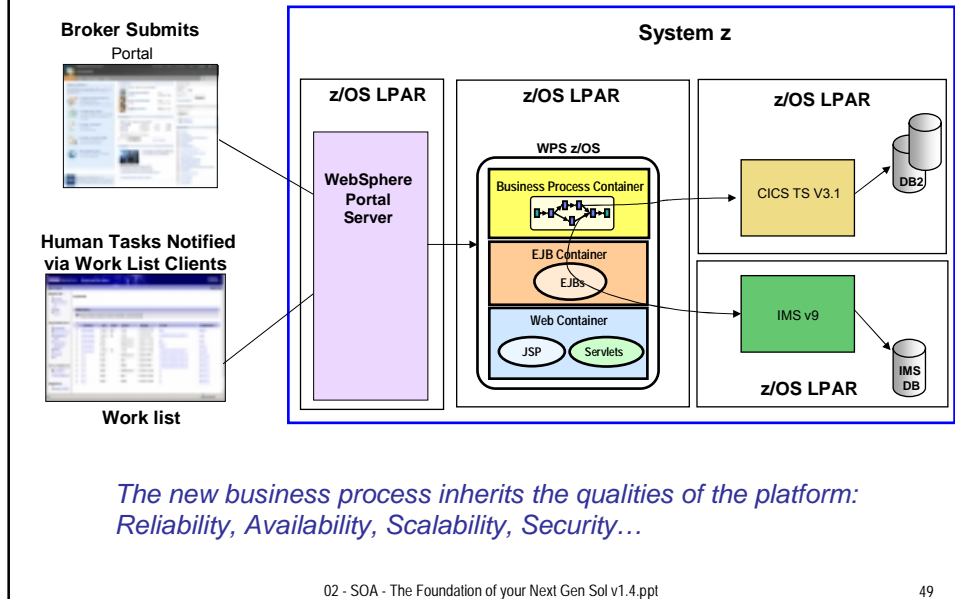
## Why SOA on System z? 3. Core System Transaction Capabilities for SOA

- System z provides a mature, robust transaction processing platform
- Many subsystems on z/OS are transactional resource managers working in collaboration with z/OS Recoverable Resource Services
  - ▶ CICS Transaction Server, IMS, WebSphere Application Server for z/OS, WebSphere Process Server for z/OS, WebSphere Enterprise Service Bus for z/OS, DB2 etc.
  - ▶ Supports transaction coordination between participating subsystems

02 - SOA - The Foundation of your Next Gen Sol v1.4.ppt

48

## Service Oriented Finance Runs its Next Generation SOA Solutions on System z



## IBM Provides Extensive Support for SOA Next Generation Solutions

- Tools to create and use services quickly
- Service combining frameworks to integrate services into applications
  - ▶ Assemble services into business processes
    - WebSphere Process Server
  - ▶ Deliver services to user desktops
    - WebSphere Portal Server
  - ▶ Combine multiple data services into a single data service
    - WebSphere Information Integrator
- Management tools for your SOA environment

*Option to Run  
Natively on  
System z*

## Summary

**Unlock the value of your System z assets  
using a Service Oriented Architecture.**

**System z is an ideal platform for  
implementing Next Generation SOA  
Solutions.**



**IBM**

