



System z™ Software

## IBM Teleconference Presentation:

Ease the pain: Migrating to System z™ management solutions

Sue Hamner & Heide Stephenson  
***Software Migration Project Office***  
[www.ibm.com/software/solutions/softwaremigration](http://www.ibm.com/software/solutions/softwaremigration)

# Agenda



- Auto discovery tools, professional services, data analysis and collection and migration analysis to smooth the migration
- IBM Tivoli® System Automation for z/OS® to monitor and launch an appropriate response when there's a deviation from the user-defined "desired state"
- IBM Tivoli® Workload Scheduler for z/OS® to plan, manage and automate the production workload running on any system, in any operating environment
- Questions & Answers

# Tivoli System Automation



## ■ 5 Key Milestones for Successful Migration

1. Perform an Assessment\* of your existing Automation environment
  - Data collection
  - Identify and address all aspects of existing Automation implementation
  - Eliminate redundant or obsolete automation Rules or REXX code
2. Identify Migration Tools\*
  - Automate migration
3. Develop a Project Plan\* – use output of Assessment as input into the Plan
  - Product installation on a test plex (Phase 1)
  - Convert automation Rules or REXX (Phase 2a)
  - Test new automation (Phase 2b)
  - Production cutover (Phase 3)
4. Execute Project Plan – Migration (Resource)
5. Plan for Migration Cutover

- *\*Note that Assessment and Project Plan are IBM professional services offerings available for a nominal fee. Migration Tools are free of charge with Assessment. Migration (Resource) may be substituted for IBM Services available upon request.*

# Tivoli System Automation - Assessment

## ■ Assessment

- **Migration Overview**
  - Executive Summary
  - Migration Project Summary
  - Project Planning and Task List
- **Assessment Study Details**
  - Conversion Issues
  - Statistics
  - Rule Migration
  - REXX Migration
- **Migration Recommendations**
- **Educational Courses**
- **Web Information**
  - Manuals, Redbooks, Product Home Pages



# Tivoli System Automation - Assessment

## Automation Statistics - All Systems combined

RULETYPE	AMOUNT
JRNL	201
MSG	2,628
ALRT	23
VAR	23
TIME	405
CMD	316
EXT	10
ALRM	37
<b>TOTAL RULE COUNT</b>	<b>3,643</b>

Total REXX execs - 867.



# Tivoli System Automation – Migration Tools



## ■ Migration Tools *\*New*

- **Auto Discovery of Started Tasks** – Tool scenario:
  - Automation Tool captures active (running) started tasks
  - Tasks are retrieved from each of the LPARs in any given Sysplex
  - Task information is used to automatically create the SA task management policy of startup/shutdown within each of the LPARs
  - Selection list of tasks available from a working list – some minor parent/child relationship manual updates required but this automation covers 80-90% of startup/shutdown
- **Migration Source Code Control** – Tool scenario:
  - Identification of custom coding (REXX) is the heart of an Automation migration
  - Tool keeps an inventory control system of REXX code to be migrated
  - Automatically identifies REXX libraries and shows ISPF statistics on creation date, last updated and by whom
  - Key for Project Manager and for medium to large size environments



# Tivoli System Automation – Migration Tools



- **Migration Tools *\*New (continued)***
  - **REXX Emulation Utility** – Tool scenario:
    - Emulate legacy REXX to run under System Automation
    - Most legacy REXX can be migrated to System Automation built-in Policy
    - On average, System Automation decreases REXX code up to 40%
  - **RULES Migration Utility** – Tool scenario:
    - Greatly assist in migration of existing Message Rules to System Automation Policy

## ***Additionally...***

- Tivoli System Automation Redbook availability 2<sup>nd</sup> half of 2006
- **\*New** Redbook and chapter on migration to Tivoli System Automation using these new Migration Tools coming soon
- Stay tuned for more on [www.redbooks.ibm.com](http://www.redbooks.ibm.com)

# Tivoli System Automation – Migration Tools

```

Session A - [24 x 80]
File Edit View Communication Actions Window Help
SAMPNLM      System Automation for z/OS Migration

Domain = AOX14      ----- Main Menu -----      Date = 04/20/06
Operator = USER1      Time = 17:30:16

Select          Description          Command
-----
1      Auto Discovery of Started Tasks      SAMDIS
2      Migration Source Code Control      SAMSCC
3      Next migration idea      SAMxxx
4      Last migration idea      SAMyyy

SAM V1R1
Licensed Materials - Property of IBM
written by Andrew McIntyre - 404-487-2477
zSeries Software Technical Sales - SMPQ Automation Team

Command ==> _
PF1=Help          PF3=Return          PF6=Roll
                  PF12=Retrieve

MRE a 22/015
Connected to remote server/host tv11114.tivlib.raleigh.ibm.com using lu/pool NTCPOK

```





# Tivoli System Automation – Project Plan

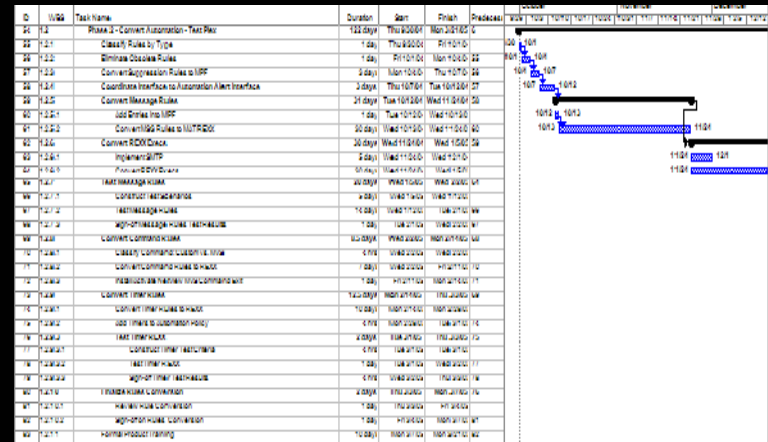
## ■ Project Plan

### – Migration (Phase 2)

- Convert Message Rules
- Convert REXX Execs
- Convert Command Rules
- Convert Timer Rules
- Test Rules/Parallel Testing
- Finalize Rules
- Formal Product Training

### – Production Roll-out (Phase 3)

- Implement Migration Phase 2 into Production Plex
- Post Cutover activities, wrap-up



# Tivoli System Automation – Project Plan



## *Migration project*

<b>PROJECT PHASE</b>	<b>DURATION</b>
Project Team Education	2 weeks
Project Planning	1 week
Initial Implementation and Customization of NetView/SA	2 weeks
Parallel testing (test systems)	12 weeks
Production Implementation and Customization of NetView/SA	varies
Parallel testing (all systems)	varies
Production Cutover	varies

# Tivoli System Automation – Migration

## ■ Migration

- Typical scope of work
  - **Assessment**
  - **Project Plan**
  - **Migration Tools**
    - Data Migration
  - **Migration Tasks**
    - Resource execution
    - Project Plan tracking
    - Execution of migration road map detailing new function and assistance in the migration phase
    - Assessment will detail the specific tasks of the migration including potential IBM advise & assist with project



# Tivoli System Automation – Migration Cutover!



# IBM TWS Evaluation

- Industry Average
  - What product and how many databases
  
- Industry Average +
  - AECl – Confidentiality Agreement
  - Questionnaire
  - Data Collection Material (DCM)
  - Conversion tool
  - Identify what features and functions are exploited
  - Migration assistance estimates
    - Normal assist model

# IBM TWS migration process

- TWS 101 training
- Planning Session
  - Establish core team
- Skills transfer throughout the migration
- Product installation and customization
- Baseline conversion pull
  - Clean up existing scheduler data
  - Conversion tools
- Best practices
  - Solve the business needs
- Parallel tracking
  - Verification tools
- Cutover assistance



# IBM TWS migration success factors

- Knowledge of current scheduling environment
  - Knowledge of current scheduler function
  - Business knowledge (e.g., business areas, business priorities)
  
- Verification of scheduling information
  - Parallel tracking methodology
  - Parallel Tracking tools
  
- Customer commitment
  - Executive sponsorship
  - Staff buy-in and attitude

# Questions & Answers



## ■ You may also email us at IBM:

- [shamner@us.ibm.com](mailto:shamner@us.ibm.com) \* Tivoli System Automation
- [heide@us.ibm.com](mailto:heide@us.ibm.com) \* Tivoli Workload Scheduler
- Customer References are available upon request
- Refer to our website for customer success stories  
[www.ibm.com/software/solutions/softwaremigration/casestudy.html](http://www.ibm.com/software/solutions/softwaremigration/casestudy.html)

