

Accelerate the pace of communication to match the speed at which you do business



Lotus® software

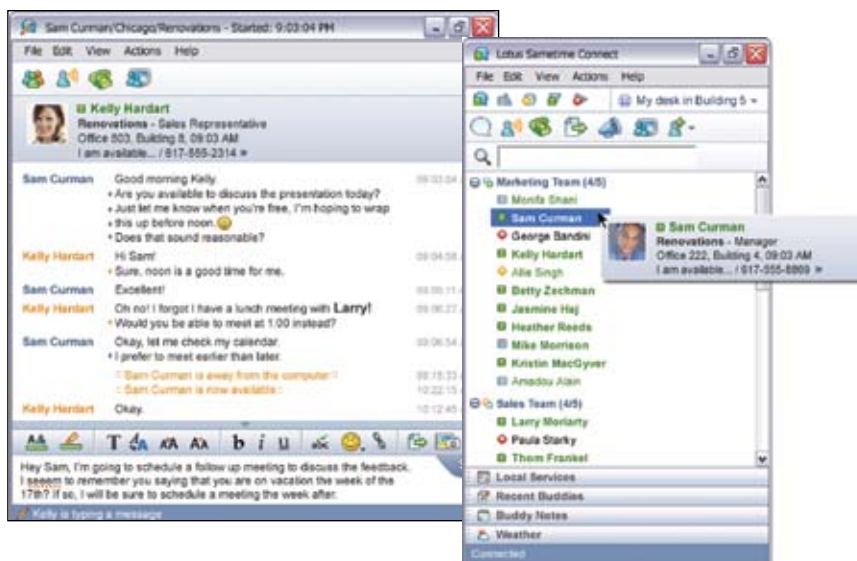
## IBM Lotus Sametime 7.5

### Highlights

- Lets you rapidly solve problems and settle questions through clear, high-quality communications
- Reduces the need for travel and related costs
- Allows users to communicate quickly with anybody—while allowing IT to stay in control
- Enables an intuitive user experience
- Provides the flexibility for deployment in multiple server and desktop environments—including Microsoft® Windows®, Linux® and Macintosh systems<sup>1</sup>

Real-time communication provides you with access to people and information—right now. In turn, you can react faster to provide immediate responses to customers and business partners. And gain an edge over your competitors by collaborating more effectively and keeping your daily business tasks on track, on budget and under control.

With IBM Lotus® Sametime® 7.5 software, you can provide faster responsiveness than ever before. Serve customers better. Stay ahead of your competitors' strategic moves. React instantly to changes in your business environment. And equip teams to collaborate more effectively—with individuals inside and outside the company—as if they were all in the same room.



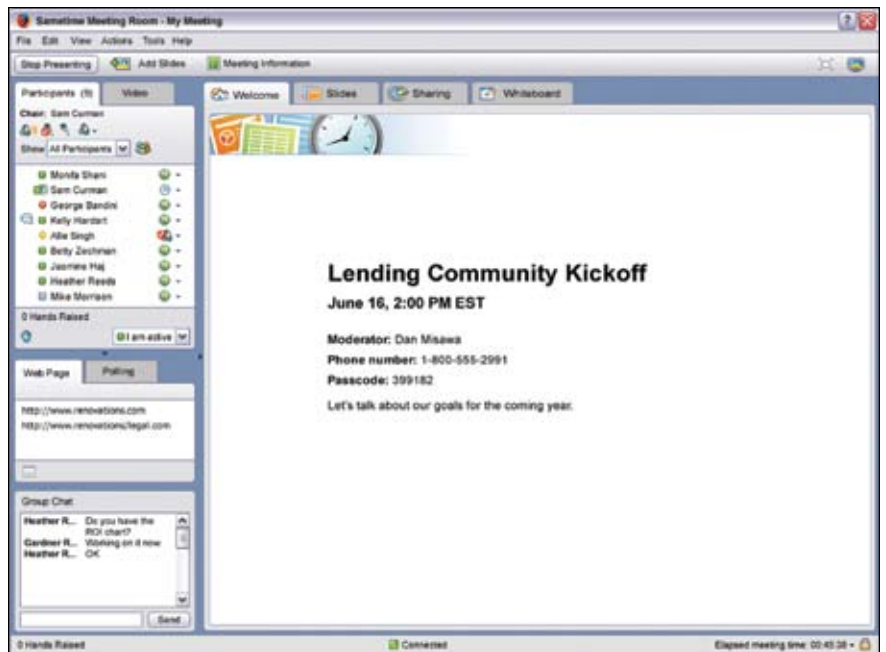
IBM Lotus Sametime 7.5 software provides the comprehensive set of communication and collaboration tools you need to run your business in real time.

**Collaborate in real time with IBM Lotus Sametime 7.5 software**

A comprehensive instant messaging (IM) and Web conferencing solution, Lotus Sametime 7.5 software provides the communication and collaboration tools you need to run your business in real time. Built-in security features allow you to reliably exchange confidential business information—and you can be confident that only your intended recipient will have access to it and that your recipient’s identity has been verified. And Lotus Sametime software is designed to integrate with your existing IT environment, providing significant cost savings and a consistent technology approach across your entire enterprise.



IBM Lotus Sametime 7.5 software provides collaboration capabilities such as voice chat and access to public and enterprise IM networks—all from a single interface.



People around the world can view the same information in real time and at the same level of quality using IBM Lotus Sametime 7.5 Web conferencing capabilities.

Set up and attend online meetings more easily. Share documents and presentations in a clear, high-quality format. And instantly escalate simple instant messaging sessions into more personal voice conversations using integrated Voice over Internet Protocol (VoIP) capabilities. With IBM Lotus Sametime 7.5 software, you also benefit from:

- *A full-featured IM client.*
- *User-friendly Web conferencing capabilities.*
- *Managed interoperability with public and other enterprise IM networks.*

- *The ability to integrate with your telephony and desktop video systems.*
- *A flexible, extendable platform that allows you to customize or add on applications.*

**Improve the user experience with intuitive Web conferencing**

Lotus Sametime software’s Web conferencing functionality is so easy to use, even first-time users can create, participate in or moderate a Web conference without training or technical skills. Team members located around the globe can stay on the same page by viewing the same document or

presentation at the same time and same level of quality. And you can significantly reduce or eliminate unpredictable costs typically associated with hosted Web conferencing services. Lotus Sametime software's Web conferencing capabilities also equip you to:

- *Reduce travel expenses by participating in meetings regardless of where you may be located.*
- *Share presentations, applications or your entire desktop in real time.*
- *Brainstorm ideas on the virtual whiteboard.*
- *Automatically reconnect in cases of temporary connectivity disruptions during meetings.*
- *Bridge the gap between voice and data with integrated telephony and video and use the click-to-call feature to dial a contact or start a video session without leaving your IM client.<sup>2</sup>*
- *Quickly dial new participants into a meeting.*
- *See visual cues indicating who is currently speaking and who has joined a call.*
- *Minimize distractions and background noise by muting participants.*



VoIP technology embedded within IBM Lotus Sametime 7.5 software provides the opportunity to engage in high-quality, bandwidth-efficient, real-time voice communications.

### **Improve business productivity with comprehensive instant messaging**

Spend less time tracking down people and information and more time on tasks that add value. Lotus Sametime software provides encrypted, authenticated instant messaging capabilities that enable you to solve problems and get answers fast. And you can strengthen relationships with your customers, suppliers and business partners by providing a wide range of flexible communication channels. Lotus Sametime software's IM capabilities also enable you to:

- *Significantly reduce the amount of time spent locating people and listening to voicemail messages.*
- *See where people are physically located and if they're available.*

- *Embed screen captures directly into a chat.*
- *Utilize spell check and time stamps.*
- *Transfer files and document links quickly and easily.*
- *View contact information automatically retrieved from your corporate directory.*

### **Reduce costs and speed voice communications with VoIP technology**

Conduct a conference call or instantly convert an IM chat session into a voice conversation—without picking up the phone. Using embedded VoIP technology, Lotus Sametime software enables you to save money by engaging in high-quality, real-time voice communications that won't tax your network bandwidth.



### **Manage business connections over public IM networks**

Stay in touch with external business contacts in real time. Lotus Sametime software enables you to easily transition from using a public IM network to a managed, enterprise IM solution—while eliminating the need for multiple clients on the desktop. Additional software license fees are not required. And the solution can help protect against harmful influences such as spam attacks and computer viruses.

### **Easily extend Lotus Sametime software with plug-ins**

Unlike traditional stand-alone IM products, Lotus Sametime software delivers a complete, open and extendable platform for real-time applications. You can customize your Lotus Sametime solution to provide users with access to the applications and information they need—such as a customer relationship management solution or salesforce automation tools—right from within their IM clients. And you can easily embed access to the functionality your users require by using built-in Lotus Sametime tools to create custom solutions and by choosing from a catalog of off-the-shelf, third-party plug-in applications.

### **Leading the marketplace**

Responsiveness matters. And your communication systems must be able to accelerate and evolve in line with your business. Used by more companies worldwide than any other enterprise IM solution, IBM Lotus Sametime software combines proven technology with the security features and real-time collaboration capabilities businesses require to keep pace with the speed of business.

### **For more information**

To learn more about IBM Lotus Sametime 7.5 software visit:

[ibm.com/lotus/sametime](http://ibm.com/lotus/sametime)

© Copyright IBM Corporation 2006

IBM Corporation  
Software Group  
Route 100  
Somers, NY 10589  
U.S.A.

Produced in the United States of America  
08-06  
All Rights Reserved

IBM, the IBM logo, Lotus and Sametime are trademarks of International Business Machines Corporation in the United States, other countries or both.

Microsoft and Windows are trademarks of Microsoft Corporation in the United States, other countries or both.

Linux is a registered trademark of Linus Torvalds in the United States, other countries or both.

Other company, product and service names may be trademarks or service marks of others.

The information contained in this documentation is provided for informational purposes only. While efforts were made to verify the completeness and accuracy of the information contained in this documentation, it is provided AS IS without warranty of any kind, express or implied. IBM shall not be responsible for any damages arising out of the use of, or otherwise related to, this documentation. Nothing contained in this documentation is intended to, nor shall have the effect of, creating any warranties or representations from IBM, or altering the terms and conditions of the applicable license agreement governing the use of IBM software.

- 1 Availability of IBM Lotus Sametime Connect client for Macintosh technology is expected in 1Q07.
- 2 Web conferencing capabilities involving integration with audio conferencing or telephony capabilities require solutions provided by third parties.