

IBM Symposium Systèmes 2014

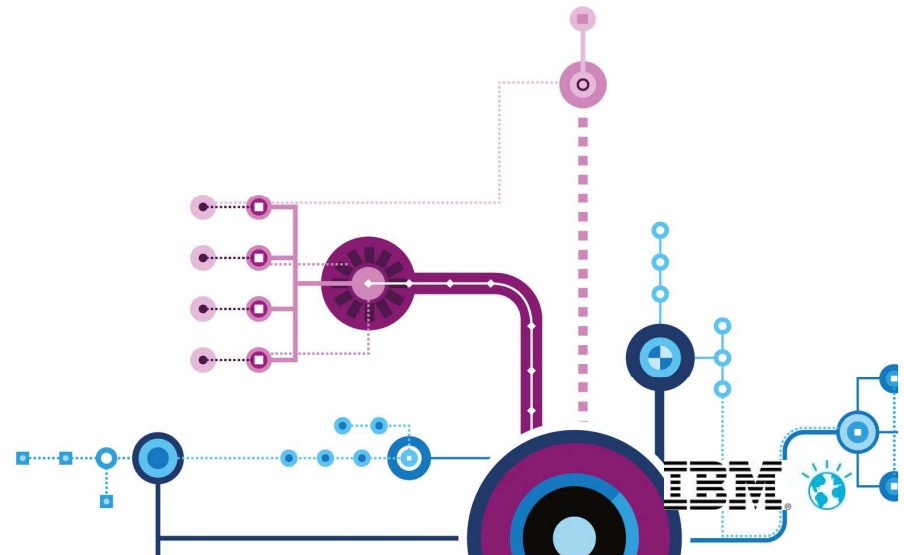
Concevoir plus rapidement des systèmes
de plus en plus flexibles et complexes



L'atelier d'Ingénierie Système et Logiciel Embarqué, nouveautés

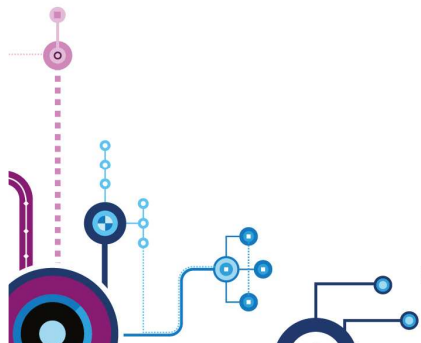
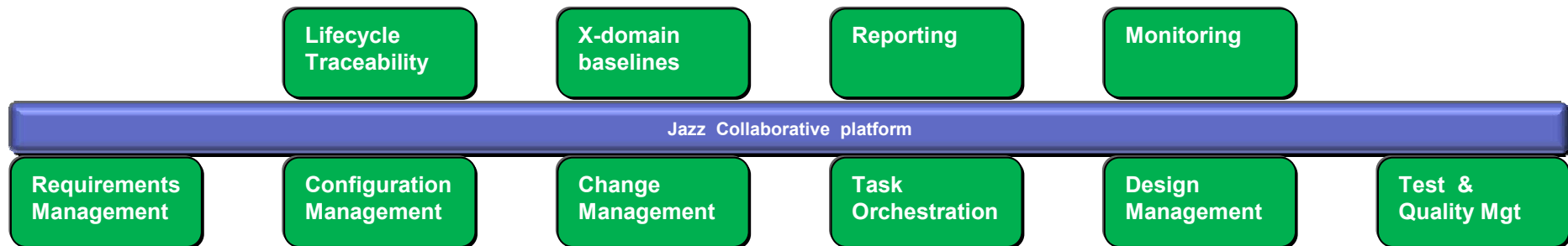
Charles-Henry JURD
European Solution Architect

Jeudi 27 mars 2014
à l'IBM Client Center Paris

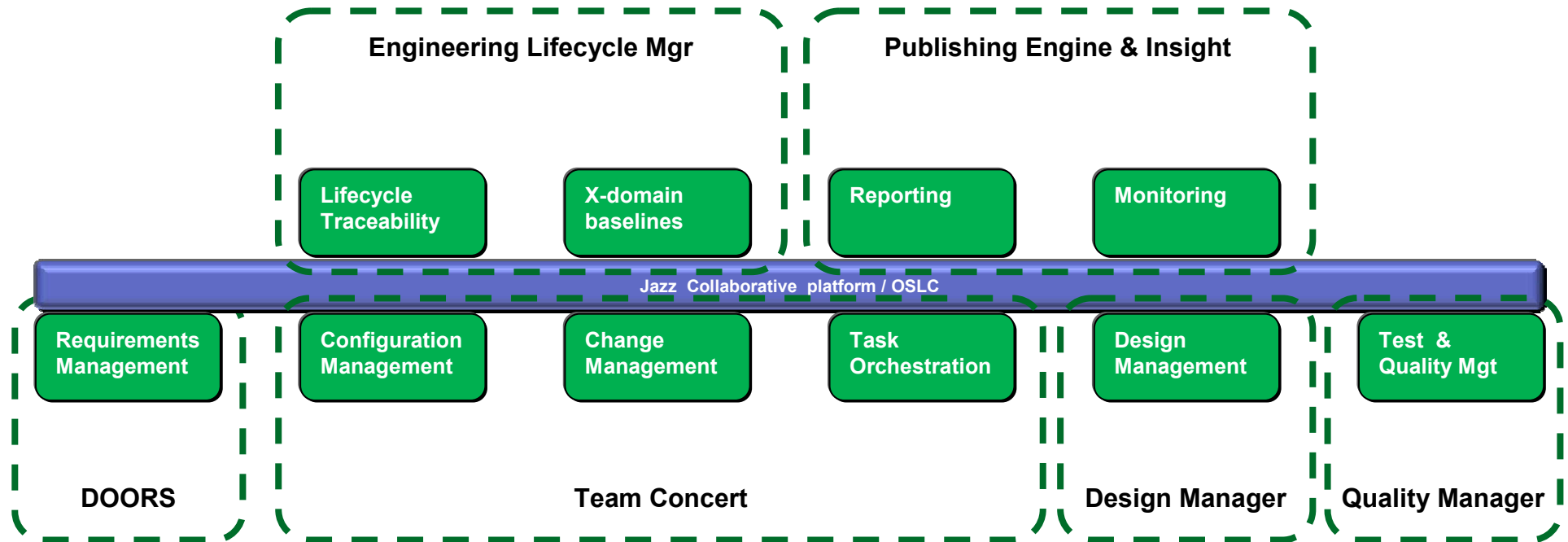


Systems & Software Engineering (SSE)

Jazz platform capabilities



SSE Jazz platform capabilities & tools



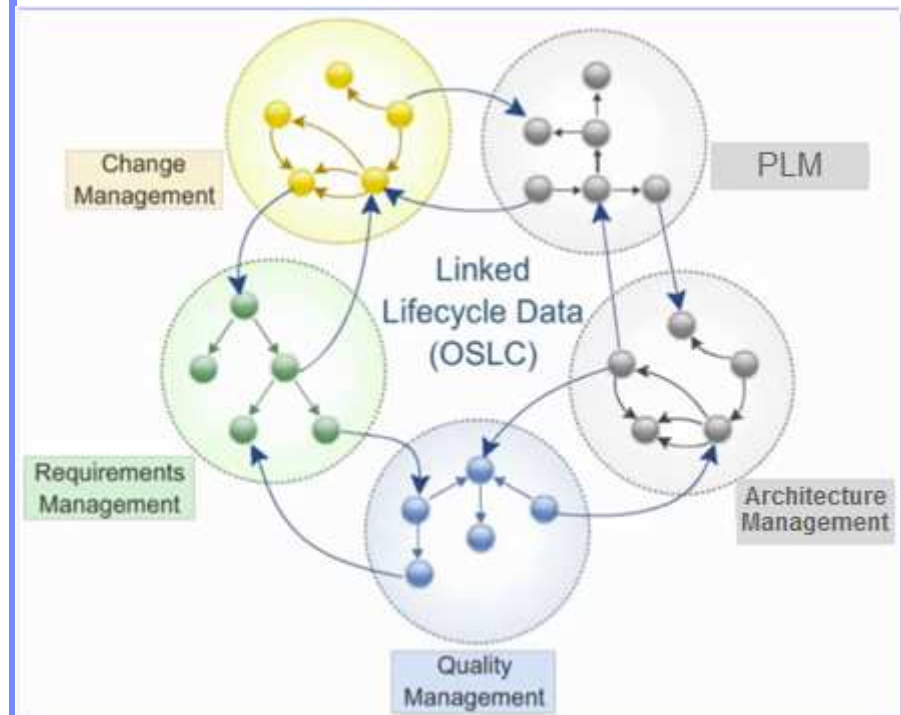


Open Services for Lifecycle Collaboration Lifecycle integration inspired by the web

- Open Community – @ open-services.net
- Driven by **OASIS** open-standards consortium
- Open specifications for numerous disciplines
 - Including ALM, PLM, and DevOps
- Defined by scenarios
 - Solution oriented
- Inspired by the web
- Open world assumption – vs. rigid APIs approach
 - Web **W3C** Linked-Data approach
 - Internet Architecture
 - HTTP based RESTful protocols
- Decouple data from container
 - Unlock data from silo tools
- “Just enough” integration
 - Consume/Provide the necessary services
- IBM and EADS are part of the 22 founding members



Linked Data Platform Working Group

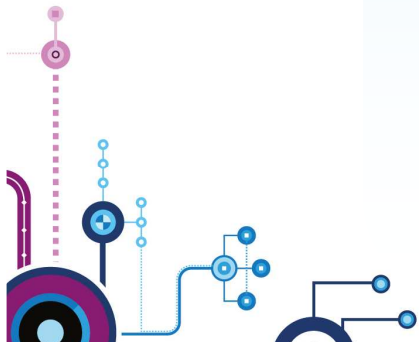
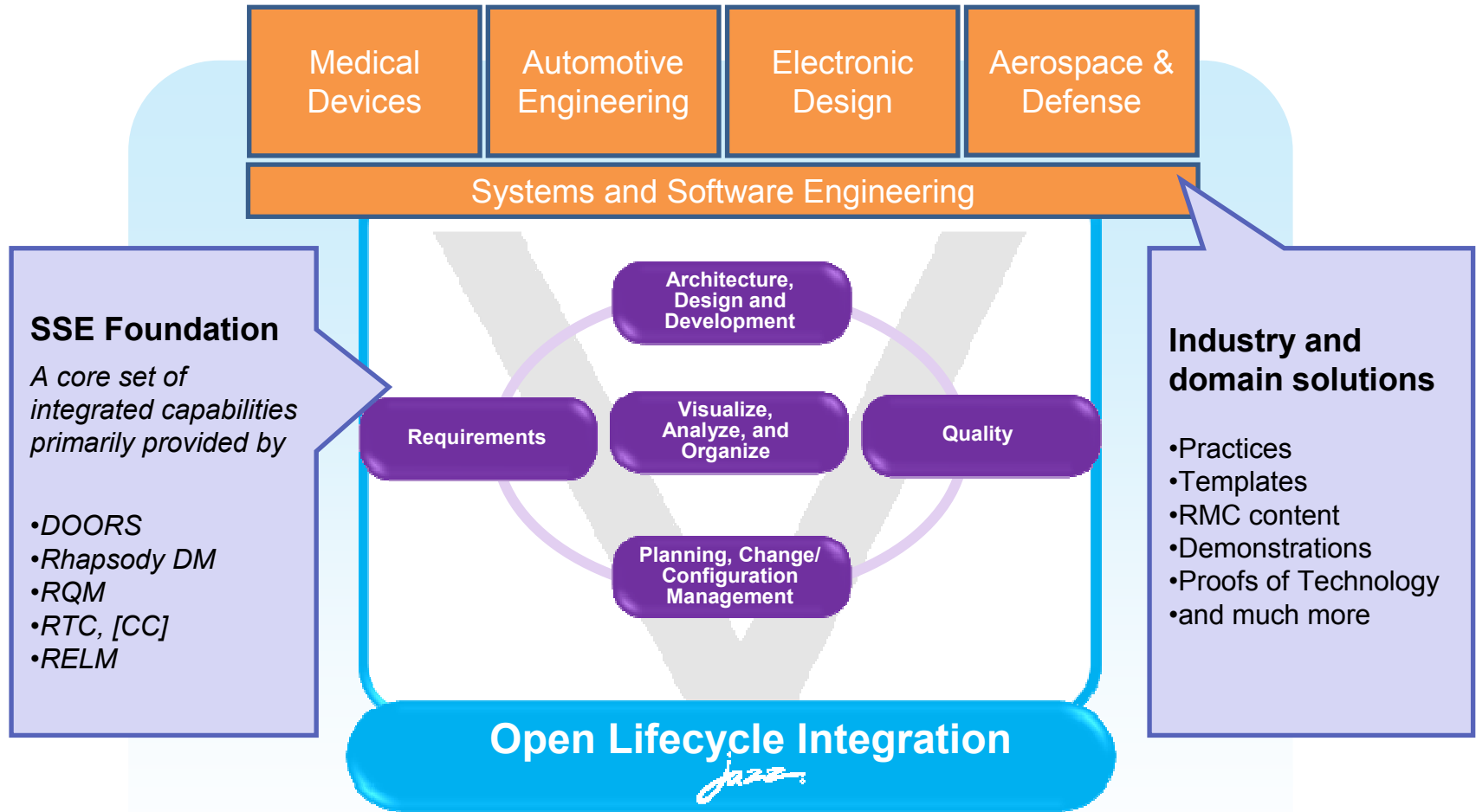


Advancing open standards for the information society

OSLC Member Section

Jeudi 27 mars 2014 à l'IBM Client Center Paris

Systems & Software Engineering Accelerators





Rational DOORS Next Generation

DOORS concepts improved and much more....



Definition

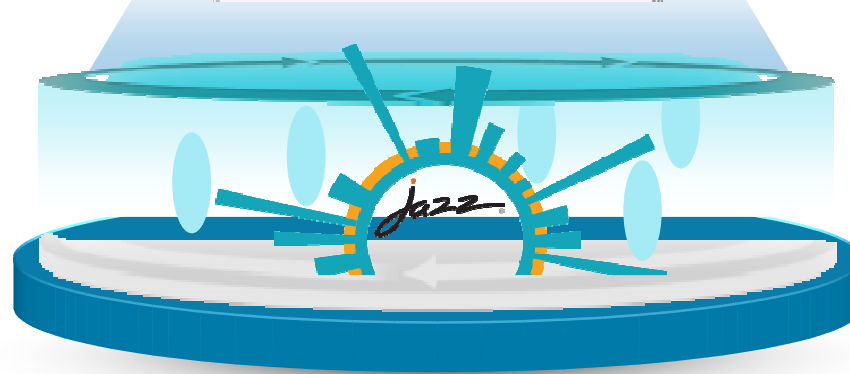
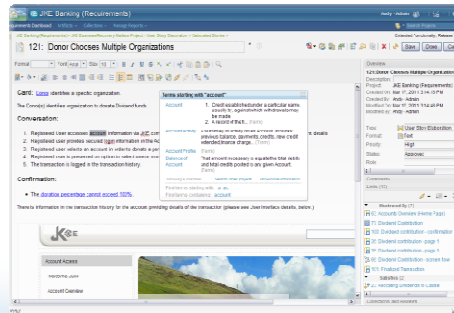
- Rich-text documents
- Diagrams: Process, Use Case
- Storyboards, UI sketching & flow
- Project glossaries
- Templates

Visibility

- Customizable dashboards
- Analysis views
- Collections
- Milestone tracking & status

Collaboration

- Review & Approval
- Discussions
- Email Notification



Management

- Structure, Attributes/Types
- Traceability, Filtering, Tags
- Baselines, Change History
- Reuse (reqs & types)
- Reporting Metrics & Doc.

Lifecycle

- Central requirements, test, & development repository
- Common administration and role-based user licensing
- Warehouse reporting

Planning

- Integrated planning
- Effort estimation
- Task Management





Rational Team Concert



Work Items

Planning

Source Control

Builds – Continuous Integration

Dashboards & Reporting

Method Enforcement and Automation

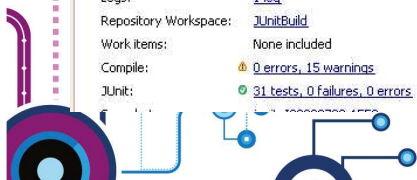
Problem
A work item must be associated with the change set or a comment must be set.

Reason
All change sets should be associated with a work item which is planned for the delivery.

Deliver (failed)
Missing work item or comment

Solutions

- Associate Existing Work Item
- Associate New Work Item
- Associate and Try Again (experimental)
- Override 'Descriptive Change Sets' Precondition

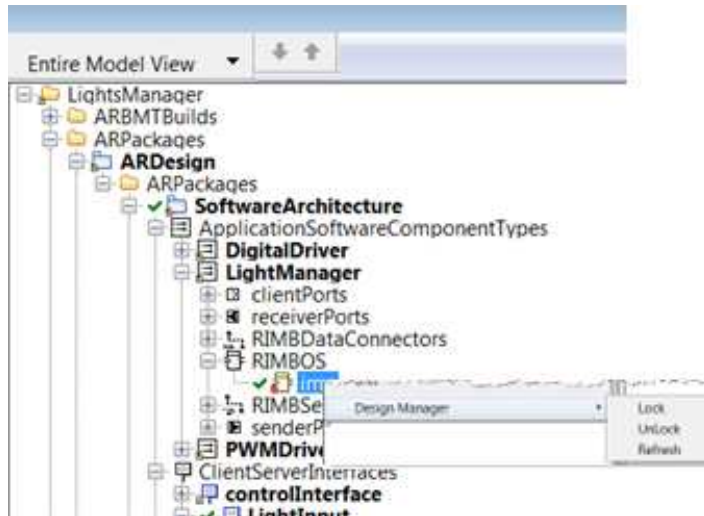




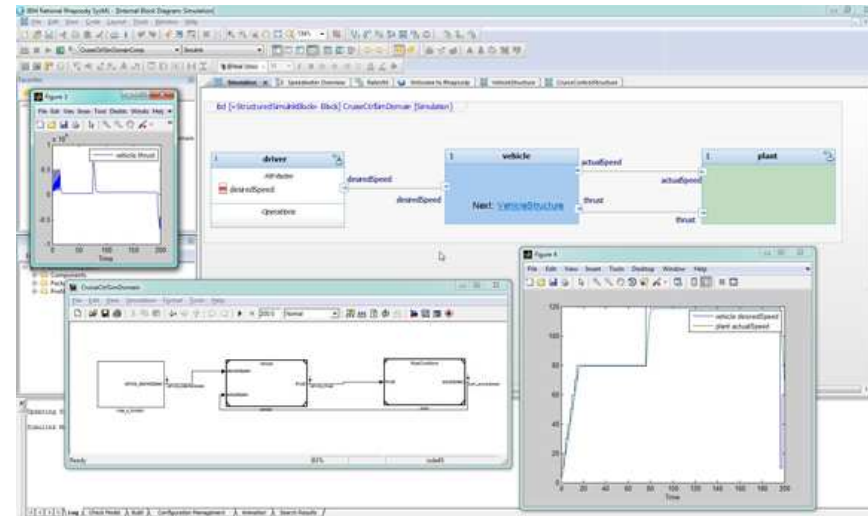
Rational Design Manager



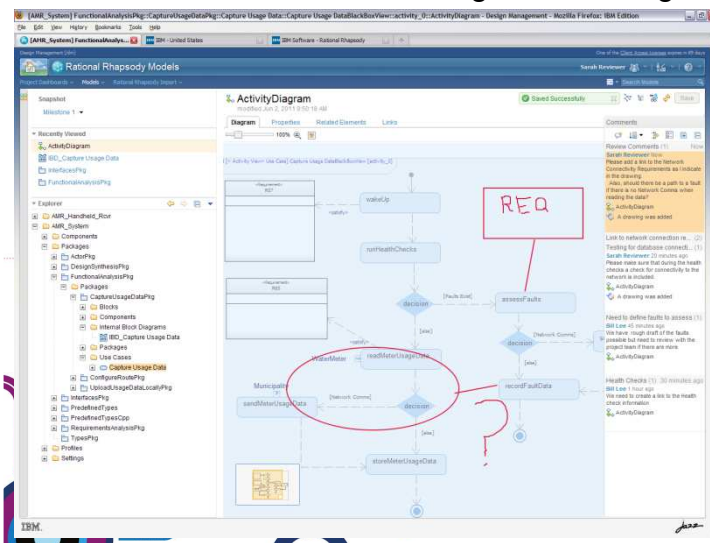
- Simplified Design Collaboration



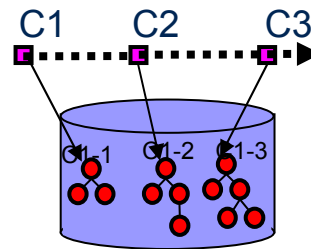
- Flexible Rhapsody & Simulink model management



- Web-client for commenting & Reviewing

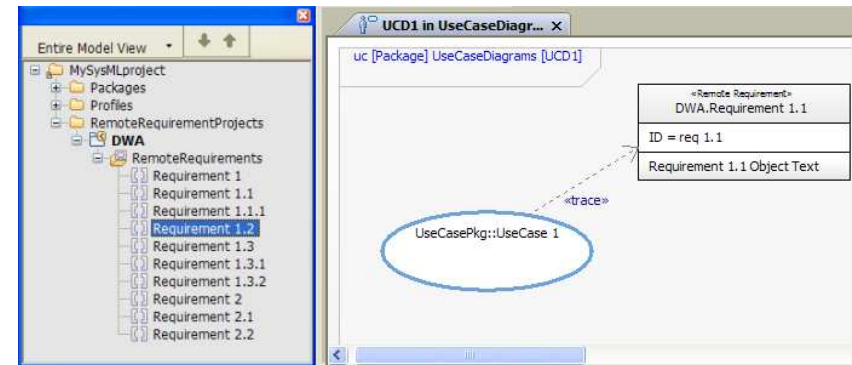


- Model Version & Variant Control



stemes

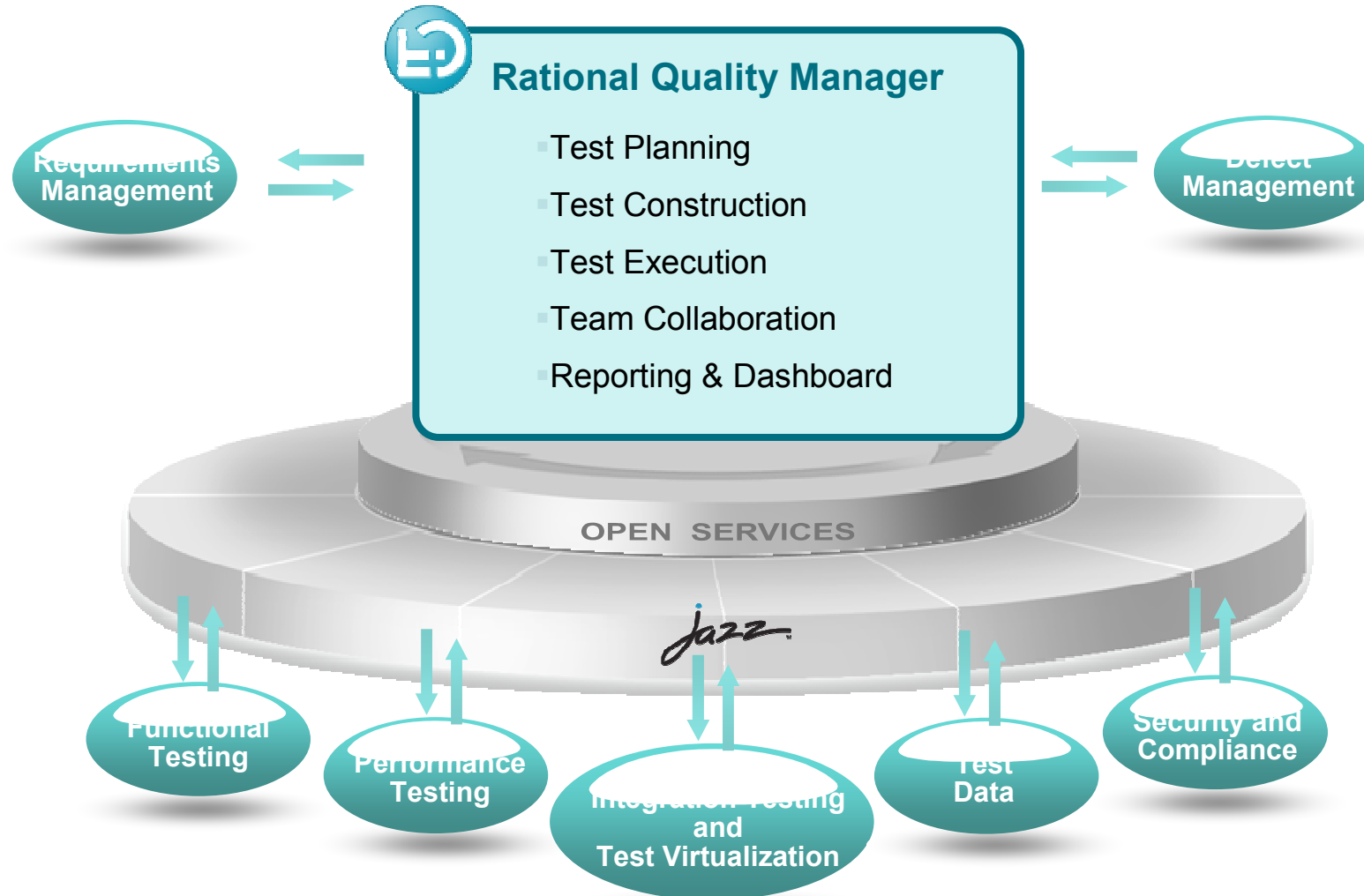
- Linking Designs to Requirements via OSLC



Jeudi 27 mars 2014 à l'IBM Client Center Paris



Rational Quality Manager





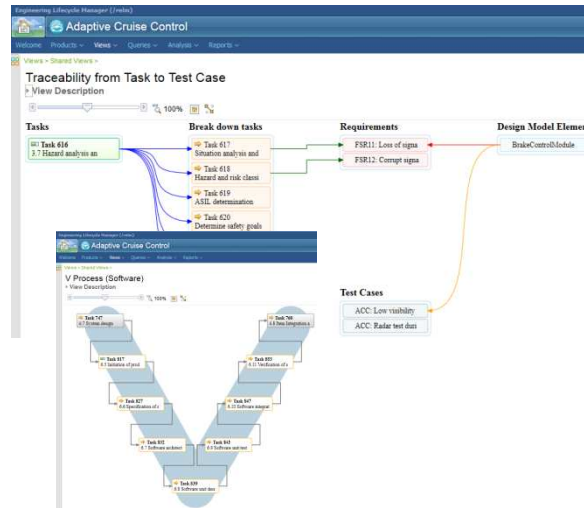
Rational Engineering Lifecycle Manager



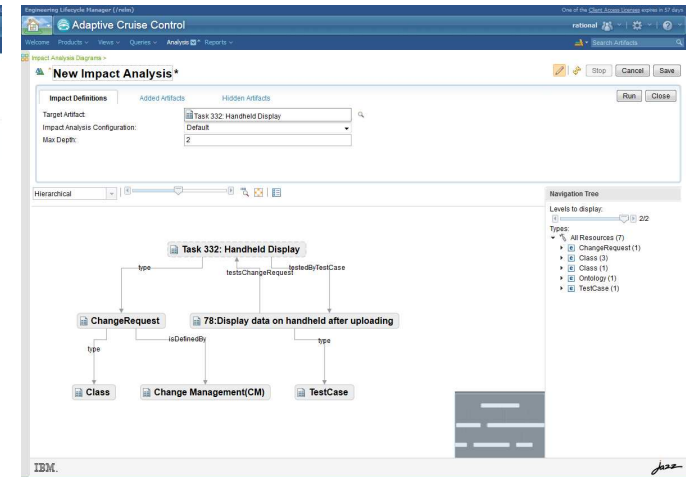
Search & Query



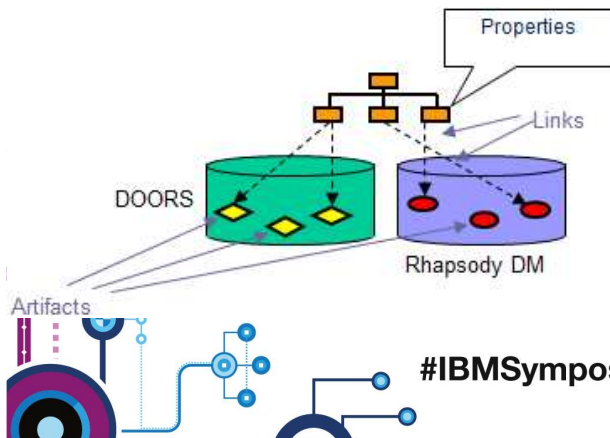
Views & Navigation



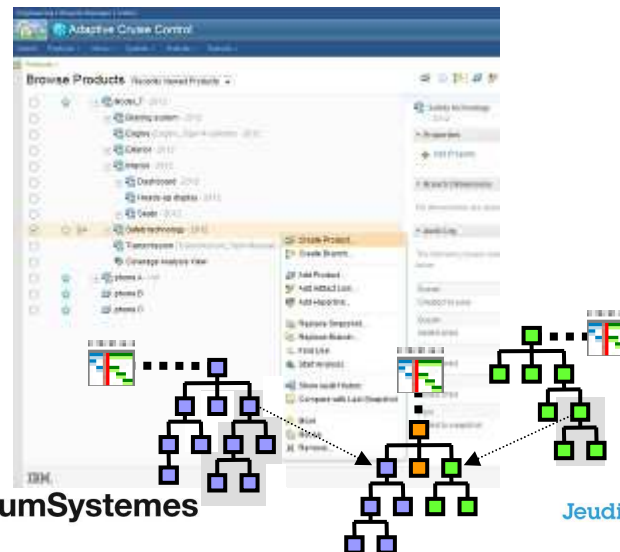
Impact Analysis



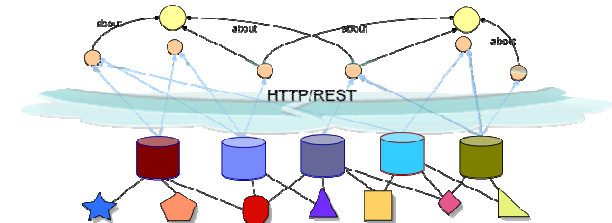
Global CM



Product Line Engineering



Indexing of Lifecycle Data



#IBMSymposiumSystemes

Jeudi 27 mars 2014 à l'IBM Client Center Paris

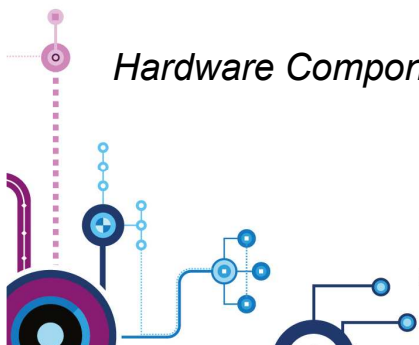
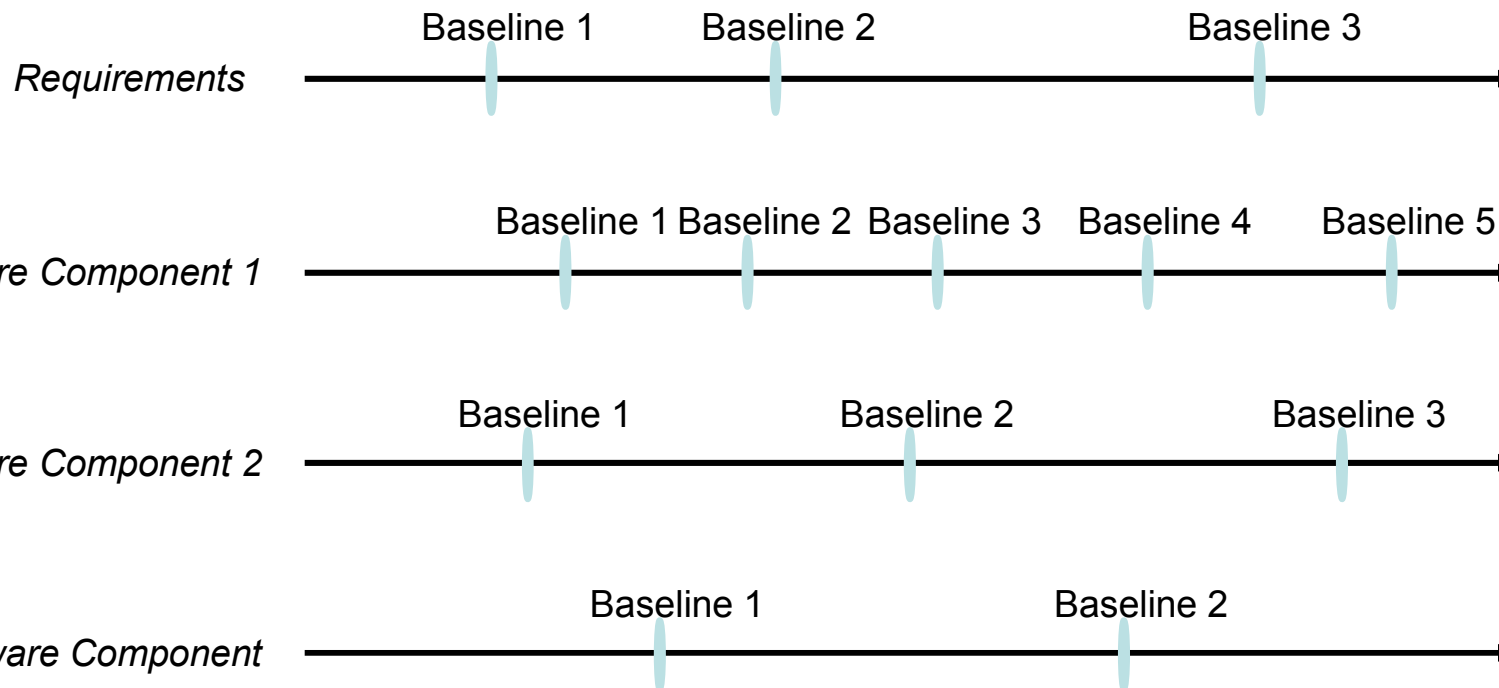


Product Organization in RELM

Organize X-Domain Baselines for Product Versions and Variants



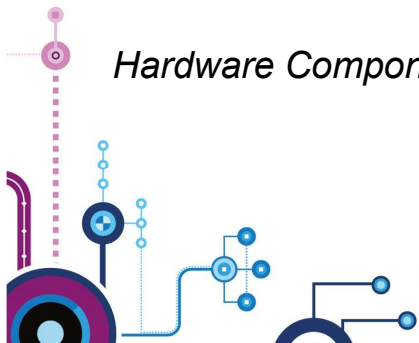
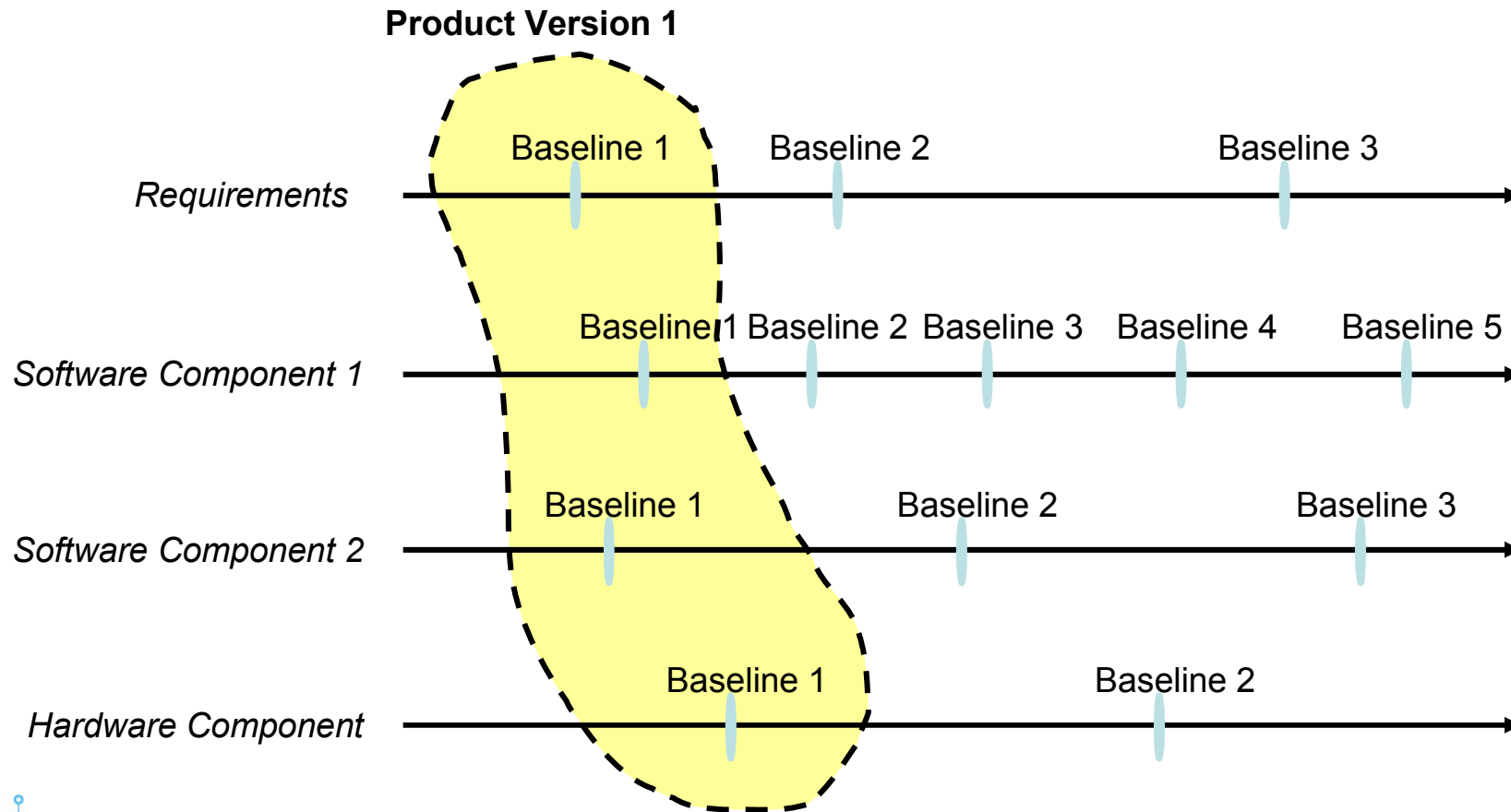
What version of requirement, software and hardware are used in version X of my product?





Product Organization in RELM

Organize X-Domain Baselines for Product Versions and Variants



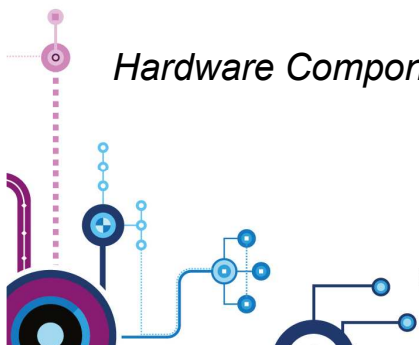
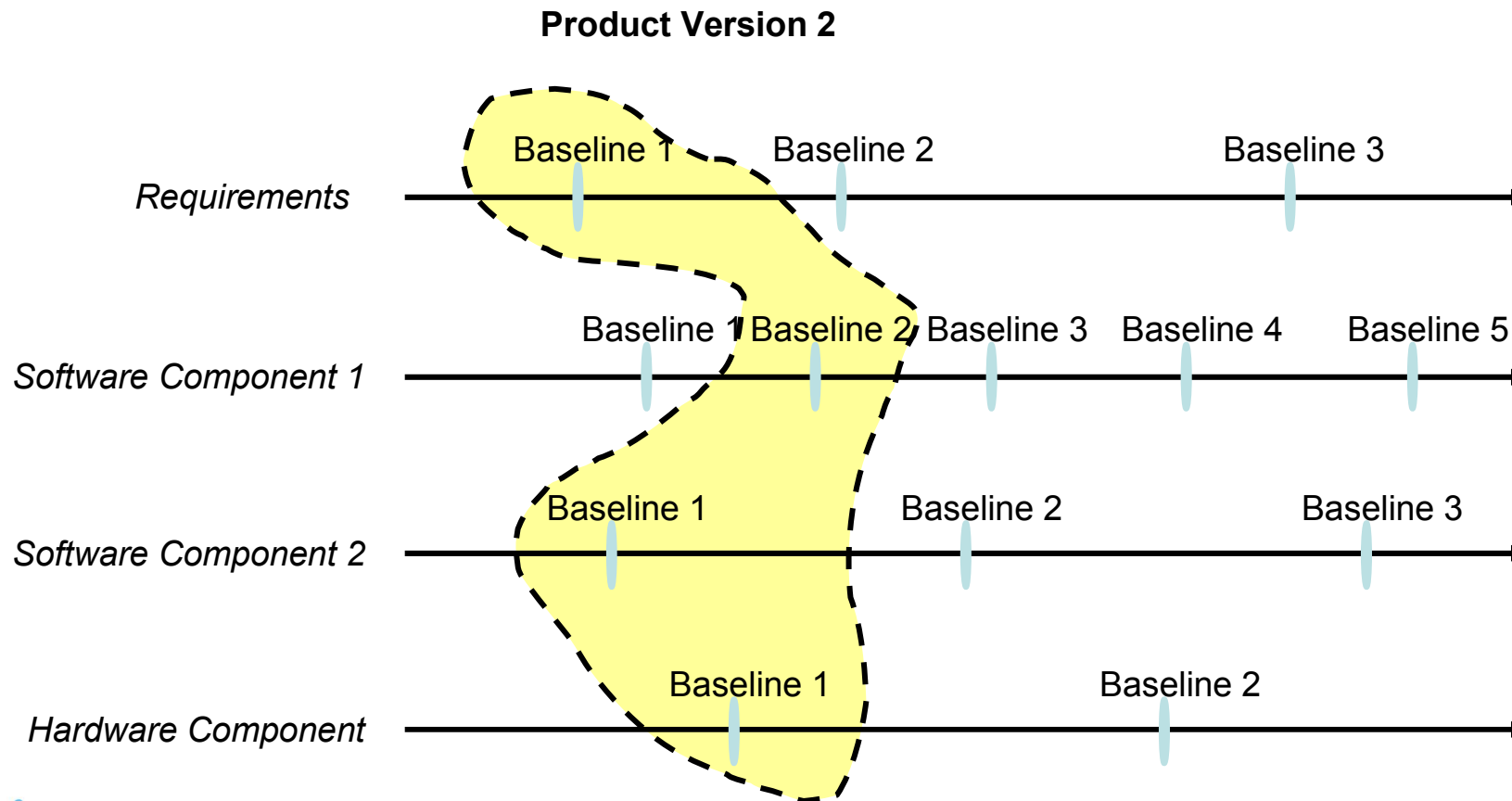
#IBMSymposiumSystemes

Jeudi 27 mars 2014 à l'IBM Client Center Paris



Product Organization in RELM

Organize X-Domain Baselines for Product Versions and Variants



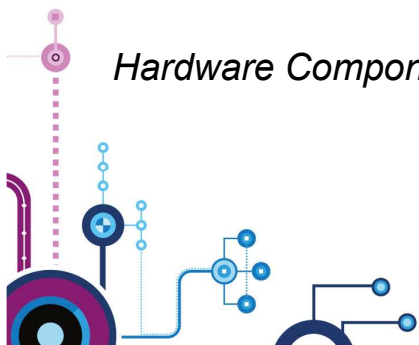
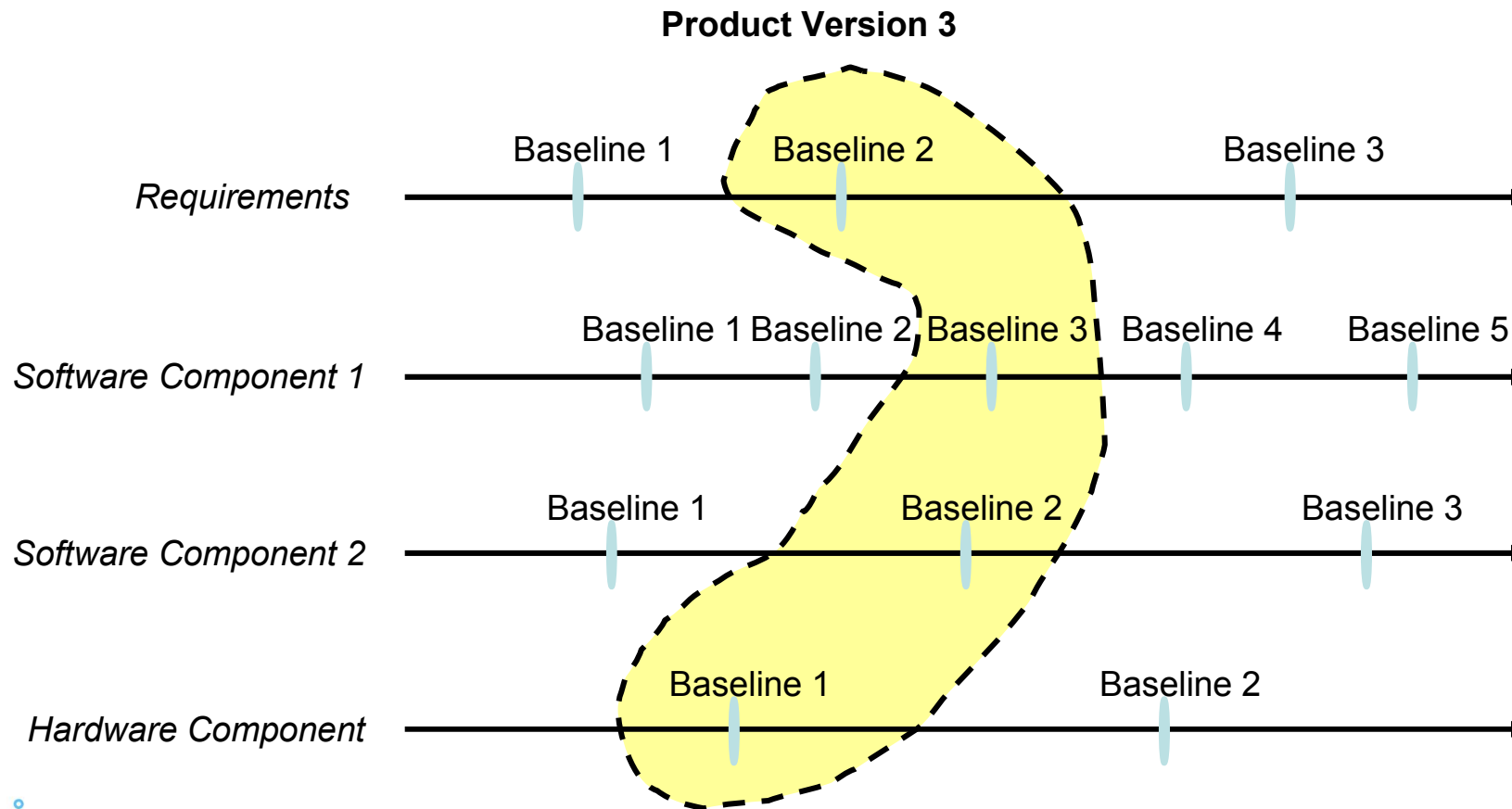
#IBMSymposiumSystemes

Jeudi 27 mars 2014 à l'IBM Client Center Paris



Product Organization in RELM

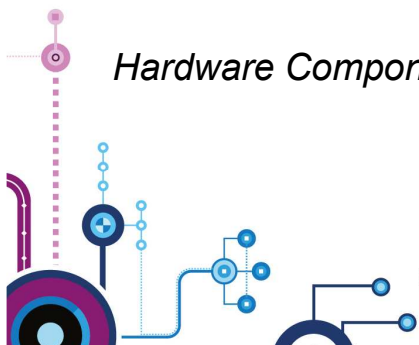
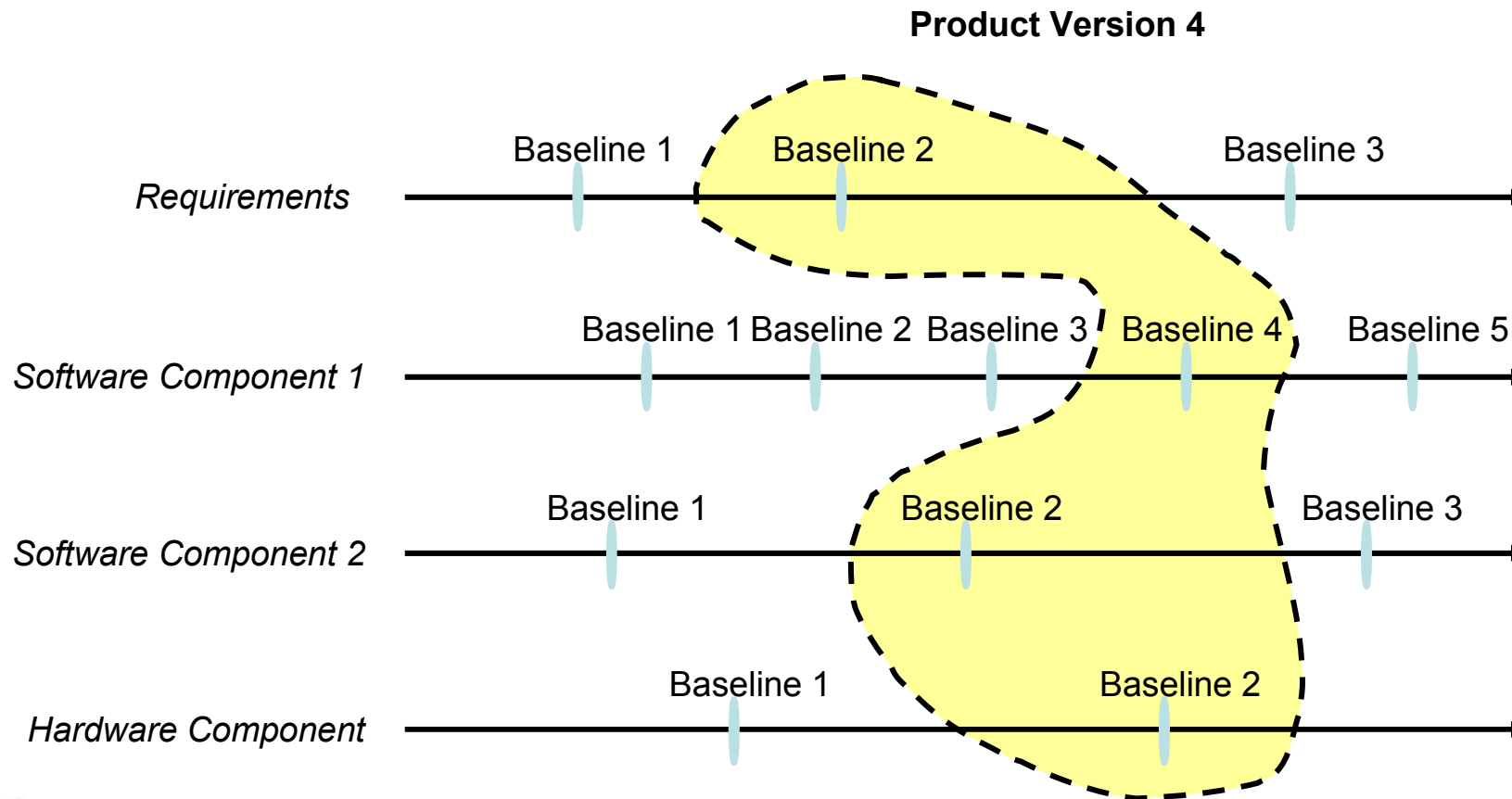
Organize X-Domain Baselines for Product Versions and Variants





Product Organization in RELM

Organize X-Domain Baselines for Product Versions and Variants



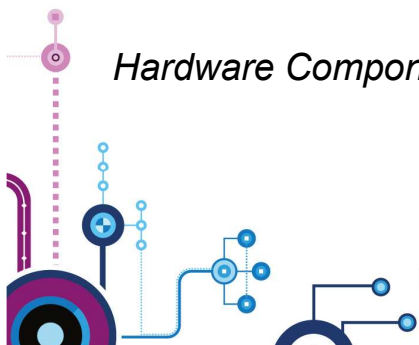
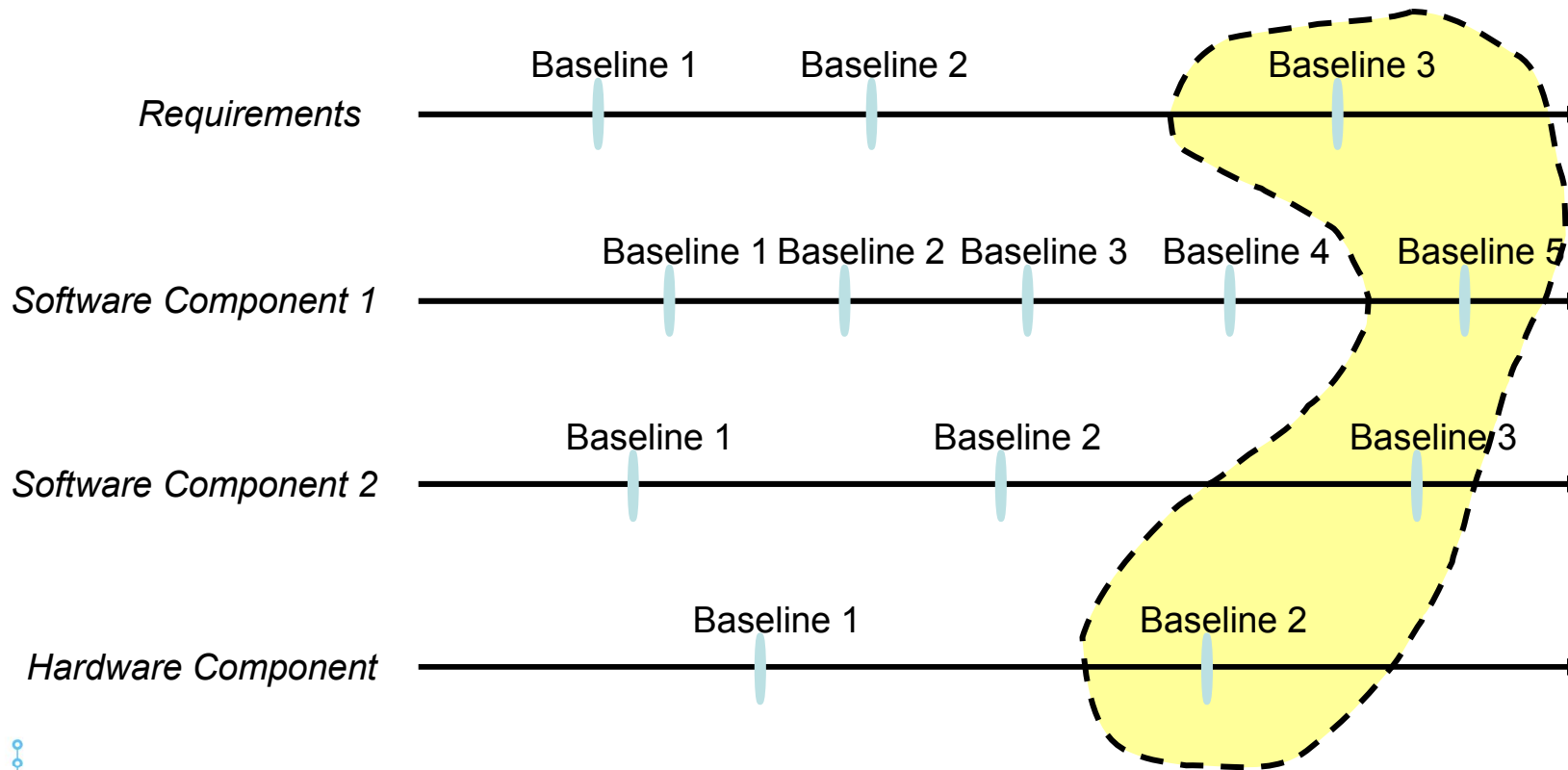


Product Organization in RELM

Organize X-Domain Baselines for Product Versions and Variants



Product Version 4

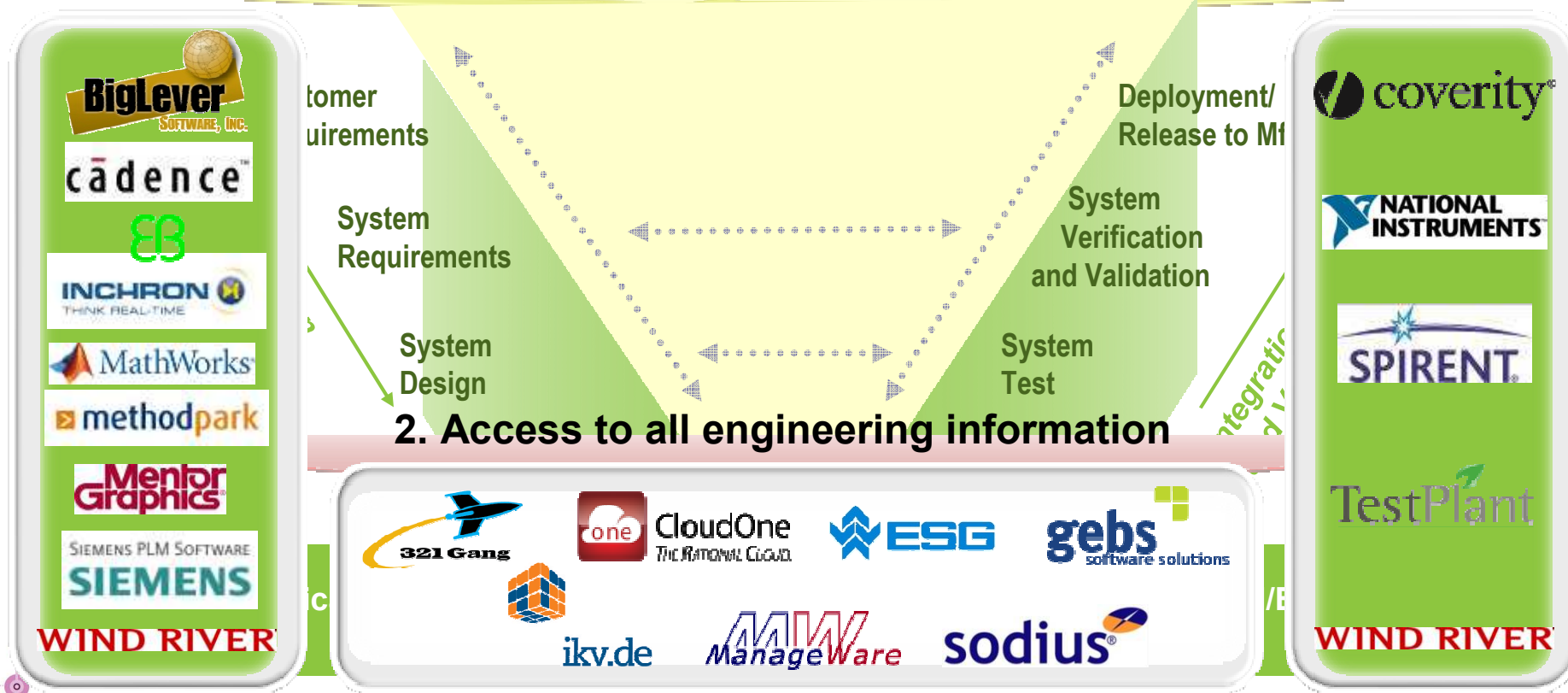


Collaboration Across Engineering Disciplines

Extend the collaboration ecosystem



1. Traceability across the lifecycle



3. Collaboration across engineering disciplines

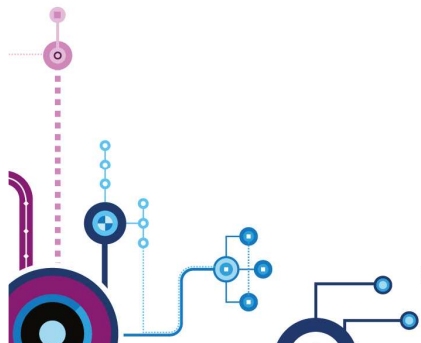
#IBMSymposiumSystemes

Jeudi 27 mars 2014 à l'IBM Client Center Paris



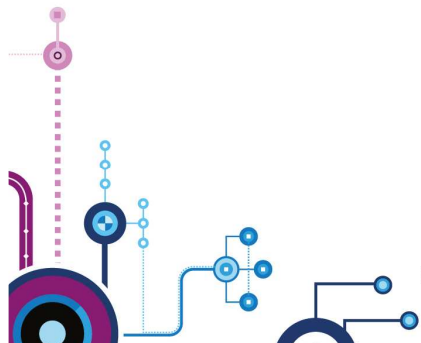
DEMO

Requirement-driven design update & verification



#IBMSymposiumSystemes

Jeudi 27 mars 2014 à l'IBM Client Center Paris



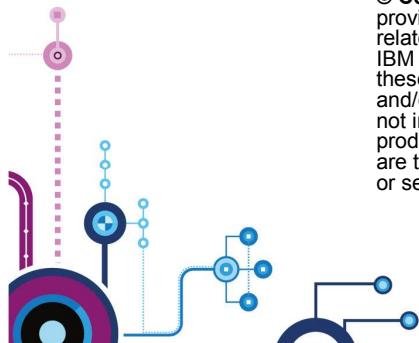
#IBMSymposiumSystemes

Jeudi 27 mars 2014 à l'IBM Client Center Paris



<http://www.ibm.com/software/fr/rational/>

© Copyright IBM Corporation 2010. All rights reserved. The information contained in these materials is provided for informational purposes only, and is provided AS IS without warranty of any kind, express or implied. IBM shall not be responsible for any damages arising out of the use of, or otherwise related to, these materials. Nothing contained in these materials is intended to, nor shall have the effect of, creating any warranties or representations from IBM or its suppliers or licensors, or altering the terms and conditions of the applicable license agreement governing the use of IBM software. References in these materials to IBM products, programs, or services do not imply that they will be available in all countries in which IBM operates. Product release dates and/or capabilities referenced in these materials may change at any time at IBM's sole discretion based on market opportunities or other factors, and are not intended to be a commitment to future product or feature availability in any way. IBM, the IBM logo, Rational, the Rational logo, Telelogic, the Telelogic logo, and other IBM products and services are trademarks of the International Business Machines Corporation, in the United States, other countries or both. Other company, product, or service names may be trademarks or service marks of others.



#IBMSymposiumSystemes

Jeudi 27 mars 2014 à l'IBM Client Center Paris