



Web-Based Training Installation Guide

Copyright © 2008 Cognos ULC (formerly Cognos Incorporated). Cognos ULC is an IBM Company.

Portions of Cognos(R) software products are protected by one or more of the following U.S. Patents: 6,609,123 B1; 6,611,838 B1; 6,662,188 B1; 6,728,697 B2; 6,741,982 B2; 6,763,520 B1; 6,768,995 B2; 6,782,378 B2; 6,847,973 B2.

While every attempt has been made to ensure that the information in this document is accurate and complete, some typographical errors or technical inaccuracies may exist. Cognos does not accept responsibility for any kind of loss resulting from the use of information contained in this document.

This document shows the publication date. The information contained in this document is subject to change without notice. Any improvements or changes to the information contained in this document will be documented in subsequent editions. This document contains proprietary information of Cognos. All rights are reserved. No part of this document may be copied, photocopied, reproduced, stored in a retrieval system, transmitted in any form or by any means, or translated into another language without the prior written consent of Cognos.

Cognos and the Cognos logo are trademarks of Cognos ULC (formerly Cognos Incorporated) in the United States and/or other countries. IBM and the IBM logo are trademarks of International Business Machines Corporation in the United States, or other countries, or both. All other names are trademarks or registered trademarks of their respective companies.

Information about Cognos products can be found at www.cognos.com

Table of Contents

Installing the IBM Cognos Web-Based Training (WBT)

System Requirements	1
Specifying the Destination Location	1
Running the WBT Installation	2
Launching the WBT	5
Prelaunch Steps for Microsoft Office 2003 and 2007 Users	6

Installing the IBM Cognos Web-Based Training (WBT)

System Requirements

This Web-Based Training (WBT) has the following system requirements:

- Pentium III processor
- Windows 2000, XP, or Vista operating system
- 128 MB RAM
- Internet Explorer (6.0 or 7.0) or Mozilla Firefox (1.5, 2.0, or 3.0)
- Macromedia Flash Player 6.0, 7.0, 8.0, or 9.0
- 1024 X 768 screen resolution
- Sound card
- 400 MB – 450 MB of free disk space
- Font size should be set to Normal in Display Properties
- CD ROM - 6x CD-ROM drive

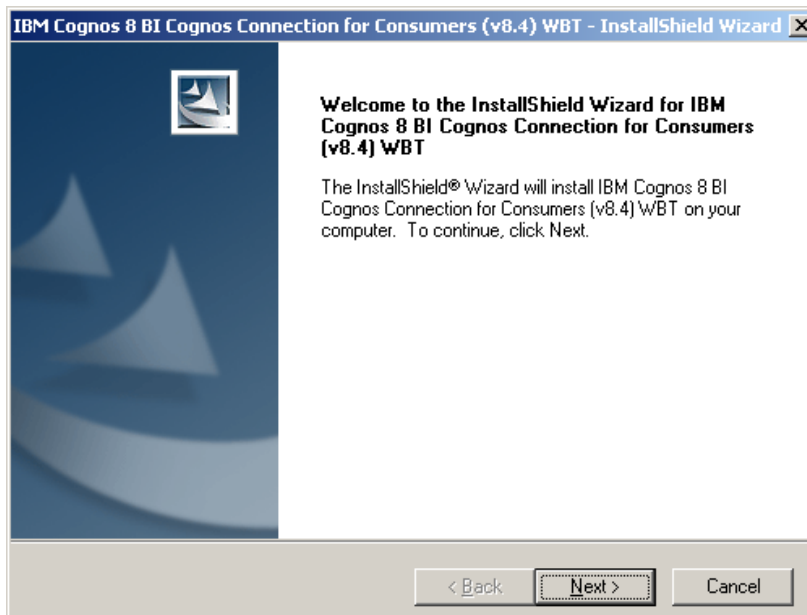
Specifying the Destination Location

You can install the WBT on your hard drive or on a network. The setup program prompts you to select the location of the WBT files and the name of the WBT program folder. You can accept the default settings or specify your own.

Running the WBT Installation

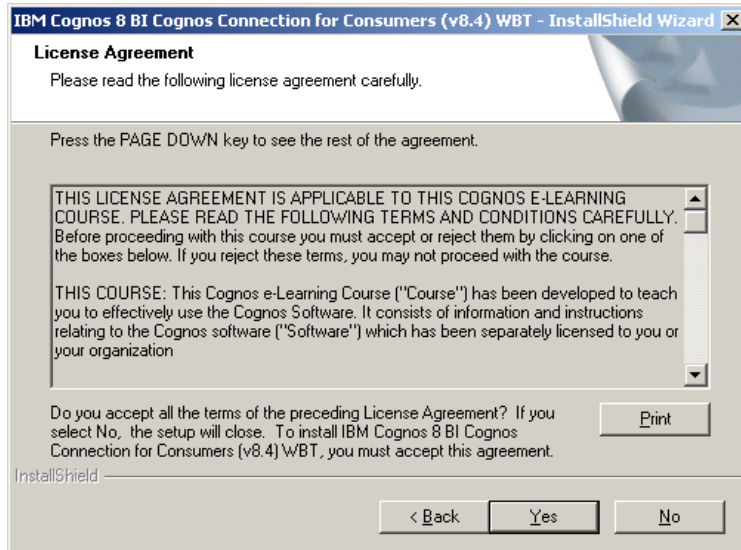
1. Place the WBT installation CD in the CD-ROM drive.
2. Click **Install the WBT**.

The Setup splash screen appears, followed by the **InstallShield Wizard** welcome page.



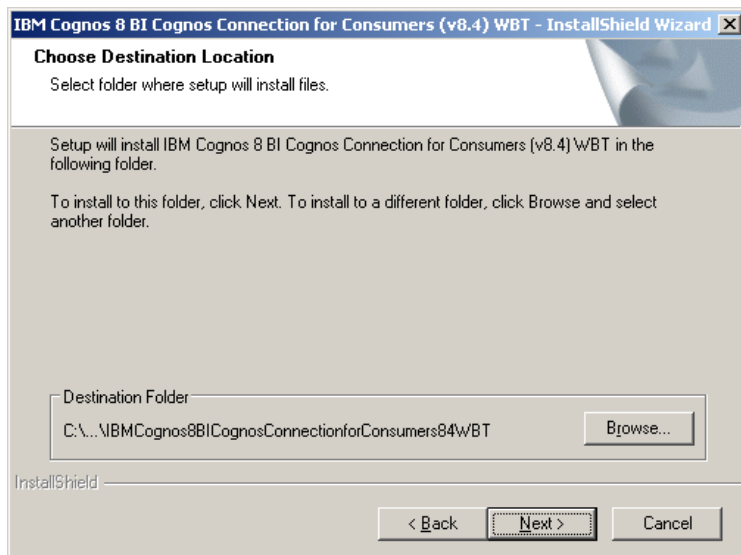
3. Click **Next**.

The **License Agreement** page appears.



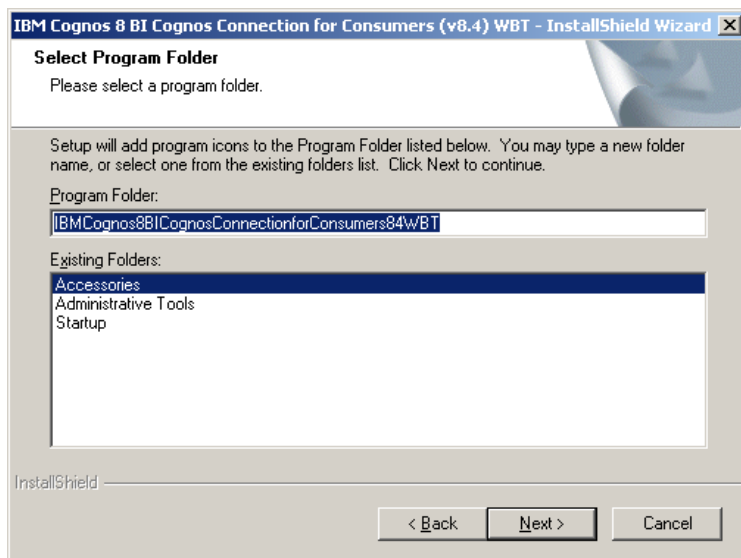
4. Click **Yes**.

The **Choose Destination Location** page appears.



5. Perform one of the following actions to select a destination location:
 - Retain the default destination folder name.
 - Click **Browse** and select a new local or network location to specify a new local or network destination.
6. Click **Next**.

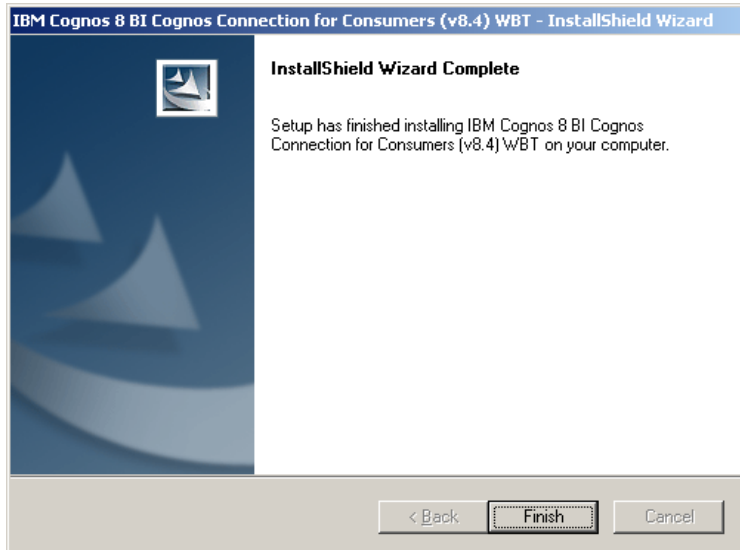
The **Select Program Folder** page appears.



7. Perform one of the following actions to select a folder:
 - Retain the default program folder name.
 - Type a new folder name to create a new folder.
 - Select a folder from the **Existing Folders** list.

8. Click **Next**.

The **InstallShield Wizard Complete** page appears.



9. Click **Finish** to complete the setup.

Launching the WBT

If the setup program is installed locally, it automatically creates a program folder from where you can launch the WBT. You can also use the following procedure to launch the WBT:

Select Start > Programs > Cognos Education > WBT Title

To launch the WBT from a network location, start the Web browser and in the address bar type the following address:

\\[network_location]\start.htm

Note:

[network_location] is the network location, where you have installed the course.

Prelaunch Steps for Microsoft Office 2003 and 2007 Users

Some local machines using Microsoft Office 2003 and 2007 might get the following error message during the installation process.



This error is caused by issues related to the Microsoft Office XML MIME Filter (msoxmlmf.dll). The Microsoft Office XML MIME Filter (msoxmlmf.dll) is registered under the registry key:

HKEY_CLASSES_ROOT\Protocols\Filer\text/xml.

Removing this registry will disable the XML filter and help you install the course.

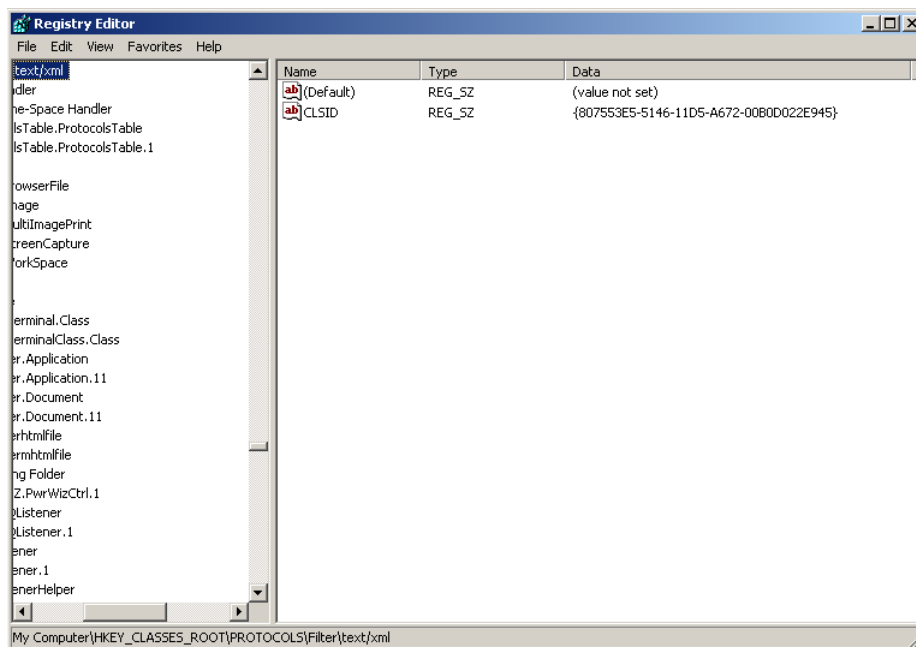
For more details visit: <http://support.microsoft.com/kb/841532.htm>

Before removing the registry entry you must take a backup of the entry.

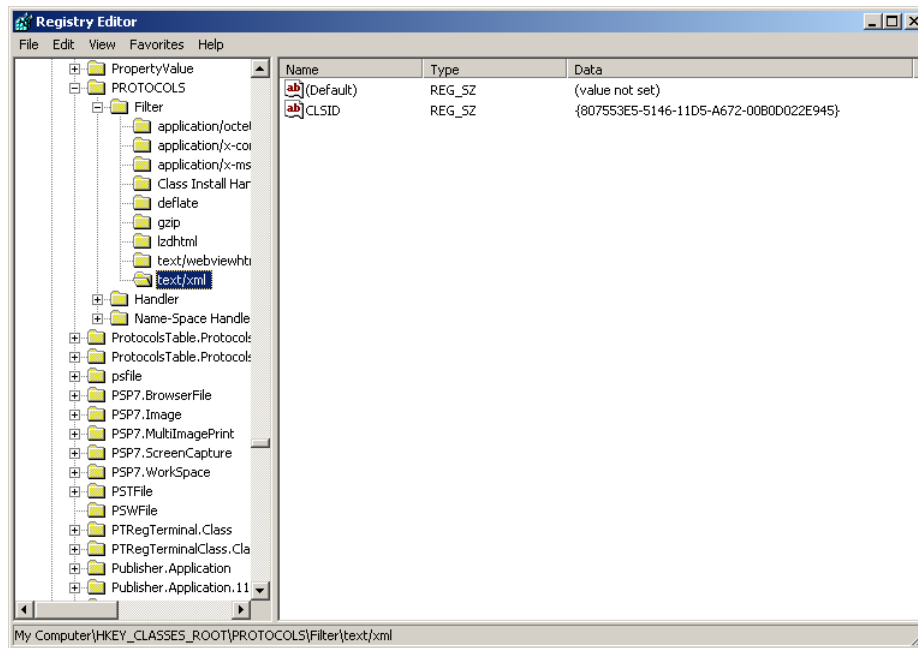
To back up registry entry:

1. Select **Start > Run**.
2. Type **regedit** and click **OK**.

The **Registry Editor** window appears.

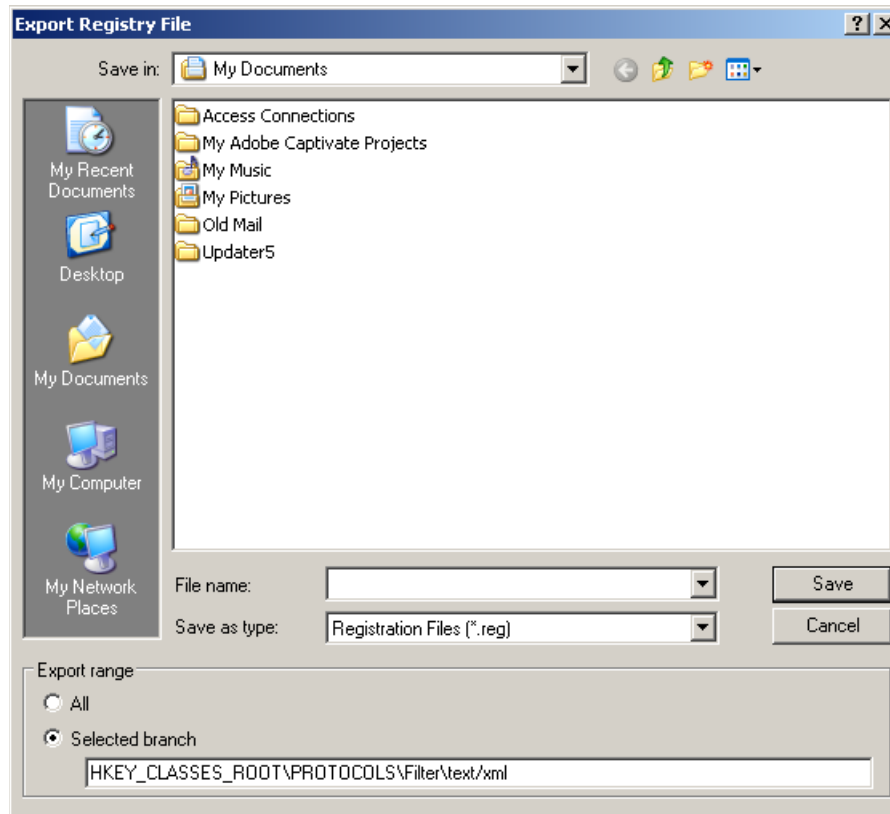


3. Navigate to the **HKEY_CLASSES_ROOT\PROTOCOLS\Filter\text/xml** folder.



4. Right-click the **text/xml** folder and select **Export**.

The **Export Registry File** dialog box appears.

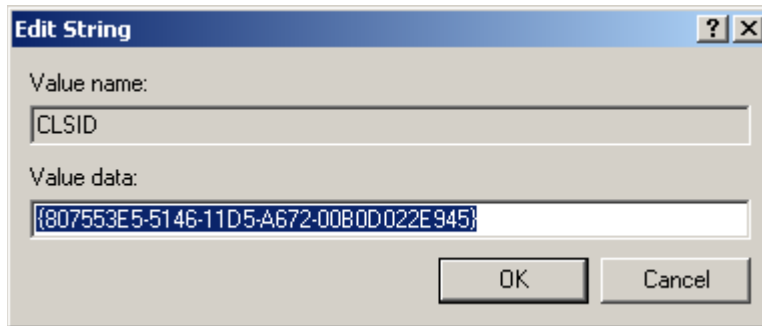


5. Perform these tasks:
 - a. In the **File name** text box, enter a backup file name; for example, **Backup**.
 - b. Select the location where you want to save the backup files.
 - c. Click **Save**.

To delete registry entry:

1. In the **HKEY_CLASSES_ROOT\PROTOCOLS\Filter\text/xml** folder, double-click **CLSID**.

The **Edit String** dialog box appears.



2. In the **Value data** text box, delete the text and click **OK**.
3. Close the **Registry Editor**.