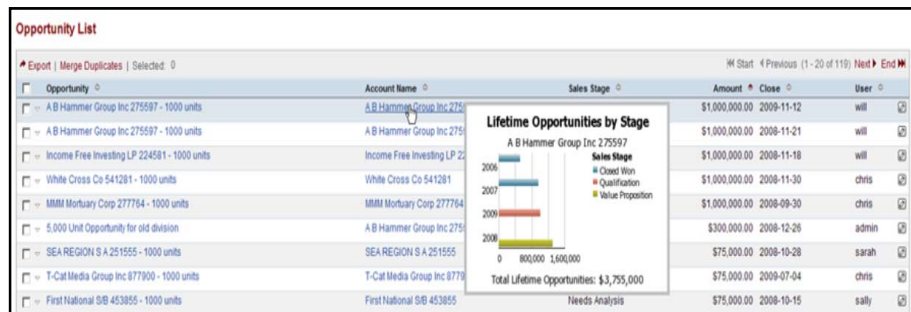


**IBM Cognos Performance**  
Better Intelligence. Better Business.

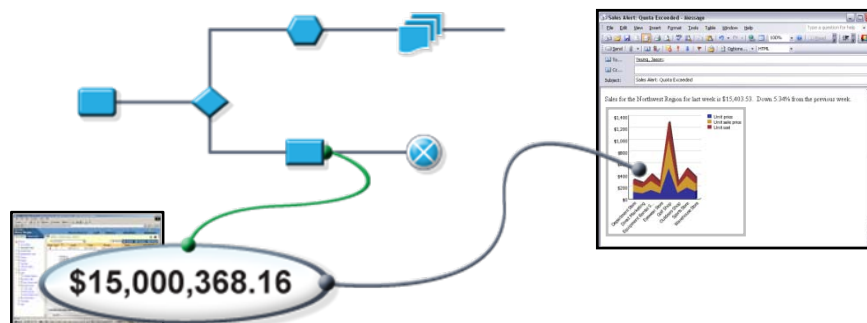
**BI03: Introducing Cognos Mashup  
Service: Extend BI to other  
applications, processes and  
mashups**



## Where would you like to use your BI?



...within other applications?



...within BPM solutions?



...as a gadget on the desktop?



...with other visualizations?



## ***Agenda***

- Introducing IBM Cognos 8 Mashup Service
- How IBM Cognos 8 Mashup Service Works
- Applying IBM Cognos 8 Mashup Service
- Summary and Next Steps



## *Agenda*

- **Introducing IBM Cognos 8 Mashup Service**
- How IBM Cognos 8 Mashup Service Works
- Applying IBM Cognos 8 Mashup Service
- Summary and Next Steps



## What we have heard from our customers



Casual  
Business User

“Can I view my information in the context of my day-to-day processes and applications?”



Business  
Manager

“Can I combine my internal information with market data that often changes?”



BI  
Professional

“Can I easily and securely provide BI content to integrate with existing applications?”




IT


“Can I use BI content with new technologies and technology standards we are implementing?”




# IBM Cognos 8 Mashup Service provides new ways to extend BI



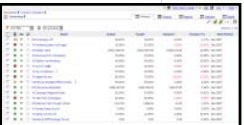
**Reports**



**Ad-hoc queries**



**Analysis**



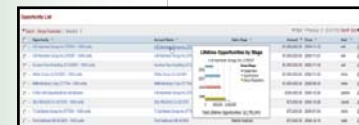
**Scorecards**

**API to Automatically and Securely Expose BI Content as a Web Service**

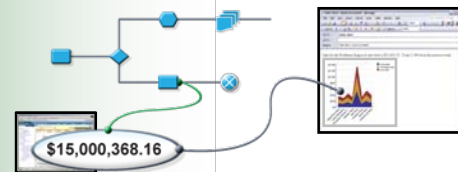
**IBM Cognos 8 Mashup Service**

**Extend the Reach of BI**

**Add Content and Context to your trusted BI**



**Applications**



**Processes**



**Mashups**



**Visualizations**



## API automatically and securely exposes BI content as a web service



Reports



Ad-hoc queries



Analysis



Scorecards

### IBM Cognos 8 Mashup Service

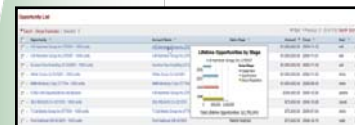
#### All Content

- Entire content or most relevant part
- Business logic including formatting, prompts, drill
- Security

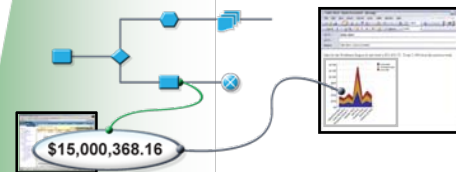
#### Flexible Output

- XML (Simple, Layout Data)
- HTML, including fragments
- JSON

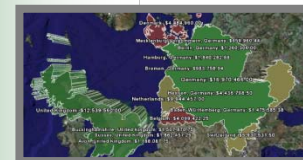
Modern Interfaces  
(REST, SOAP)



Applications



Processes



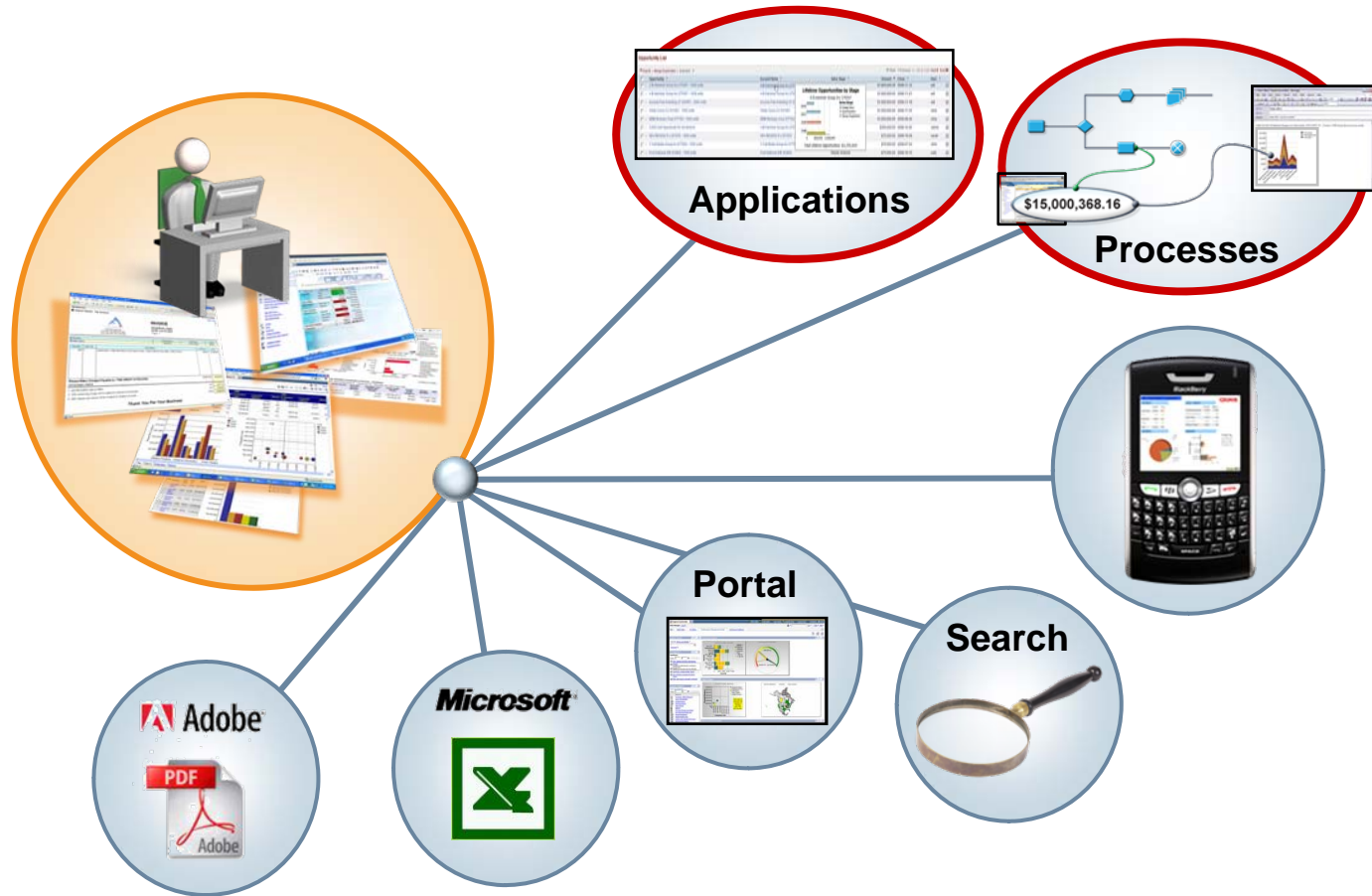
Mashups



Visualizations



# Extend the reach of BI into applications and processes



**Information in the world business works everyday**





## Add content and context to your trusted BI with mashups and alternate visualizations

Shipments

Enter shipment search criteria:  
ETA:   
Libelle POD:   
Libelle fournisseur:

ETA	Libelle_POD	Libelle_four
2007-10-01	SINGAPORE	LANDBOND MARKETIN
2007-10-01	SINGAPORE	LANDBOND MARKETIN

Page 1

etd	eta	transit_time	pol	libelle_pol	pod	libelle_pod	navire	no_voyage	compagnie	f
2007-09-28	2007-10-01	3	CNYTN	YANTIAN	SGSIN	SINGAPORE	NYK CASTOR	65W37	OOCL HK	

### Mashup:

lightweight web application created by combining existing information or capabilities from more than one existing source

***New insights from your information***



## *Agenda*

- Introducing IBM Cognos 8 Mashup Service
- **How IBM Cognos 8 Mashup Service Works**
- Applying IBM Cognos 8 Mashup Service
- Summary and Next Steps



## ***IBM Cognos 8 Mashup Service is easy to integrate***

To securely leverage IBM Cognos 8 content:

- 1** Identify the BI content
- 2** Specify the most relevant portion of the content
- 3** Specify the output format

***This is all the application developer needs  
to start integrating IBM Cognos 8 BI !***



1

## Identify the BI content

From properties, view the search path, ID and URL

View the search path, ID and URL

Search path:  
/content/folder[@name='Samples']/folder[@name='Models']/package[@name='GO Data Warehouse (analysis)']/folder[@name='Query Studio Report Samples']/query[@name='Return Quantity by Product Line Chart']

ID:  
IEE9D3B8ED8C04C6FB1ECC5FF89B724F3

Default action URL:  
http://localhost:80/busps1/cgi-bin/cognos.cgi?b\_action=xts.run&m=portal /launch.xts&ui.gateway=%2fbusp1%2fcgi-bin%2fcognos.cgi&ui.tool=QueryStudio&ui.action=edit&ui.object=%2fcontent%2ffolder%5b%40name%3d%27Samples%27%5d%2ffolder%5b%40name

Report output versions:  
Setting the number of occurrences to zero (0) saves an unlimited number of occurrences.

Number of occurrences: 1

Duration: Day(s)

The content ID uniquely identifies this report

Return Quantity by Product Line Chart

Package:  
GO Data Warehouse (analysis) - Lights analysis

http://localhost/busps1/cgi-bin/cognos.cgi#

Content ID is required to identify web service URL.



## 2 *Specify the most relevant portion of the content*

The screenshot shows a browser window with the following content:

Body - Mozilla Firefox  
http://localhost/bufp2/cgi-bin/cognos.cgi/rds/atom/path/Public Folders/Samples/Models/GO Data Warehou: ☆ Google

Body

Subscribe to this feed using  Live Bookmarks   
 Always use Live Bookmarks to subscribe to feeds.

**Body**

- [Combination Chart - survey topic scores by department](#)  
Monday, September 22, 2008 4:16 PM
- [Combination Chart - survey scores and benchmark](#)  
Monday, September 22, 2008 4:16 PM
- [Crosstab1](#)  
Monday, September 22, 2008 4:16 PM

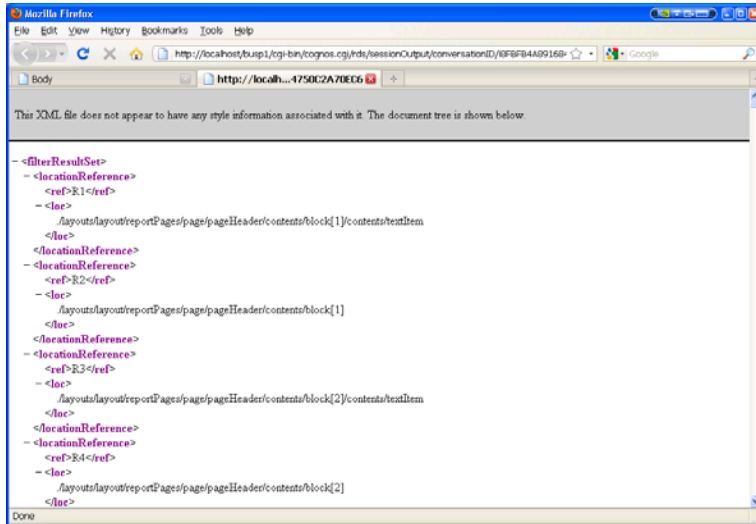
Done

Select the entire content or the most relevant part – including header, footer, charts

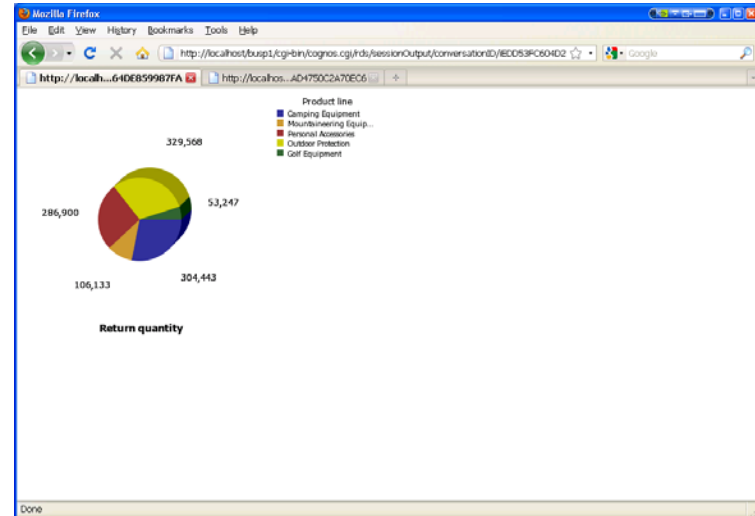
The content part is specified within the REST URL



## 3 Specify the output format



XML



HTML...

Output format is based on how the content will be used.



## ***IBM Cognos 8 Mashup Service is easy to integrate***

To securely leverage IBM Cognos 8 content:

- 1** Identify the BI content
- 2** Specify the most relevant portion of the content
- 3** Specify the output format

***Let the integration begin...***



## ***Agenda***

- Introducing IBM Cognos 8 Mashup Service
- How IBM Cognos 8 Mashup Service Works
- **Applying IBM Cognos 8 Mashup Service**
- Summary and Next Steps





**Sales Alerts**

Name @

- GO Northern EU: -5% !!
- GO Southern EU Under Performing
- 'NA Plan vs Actual' - 'exceeded' > 2.5%

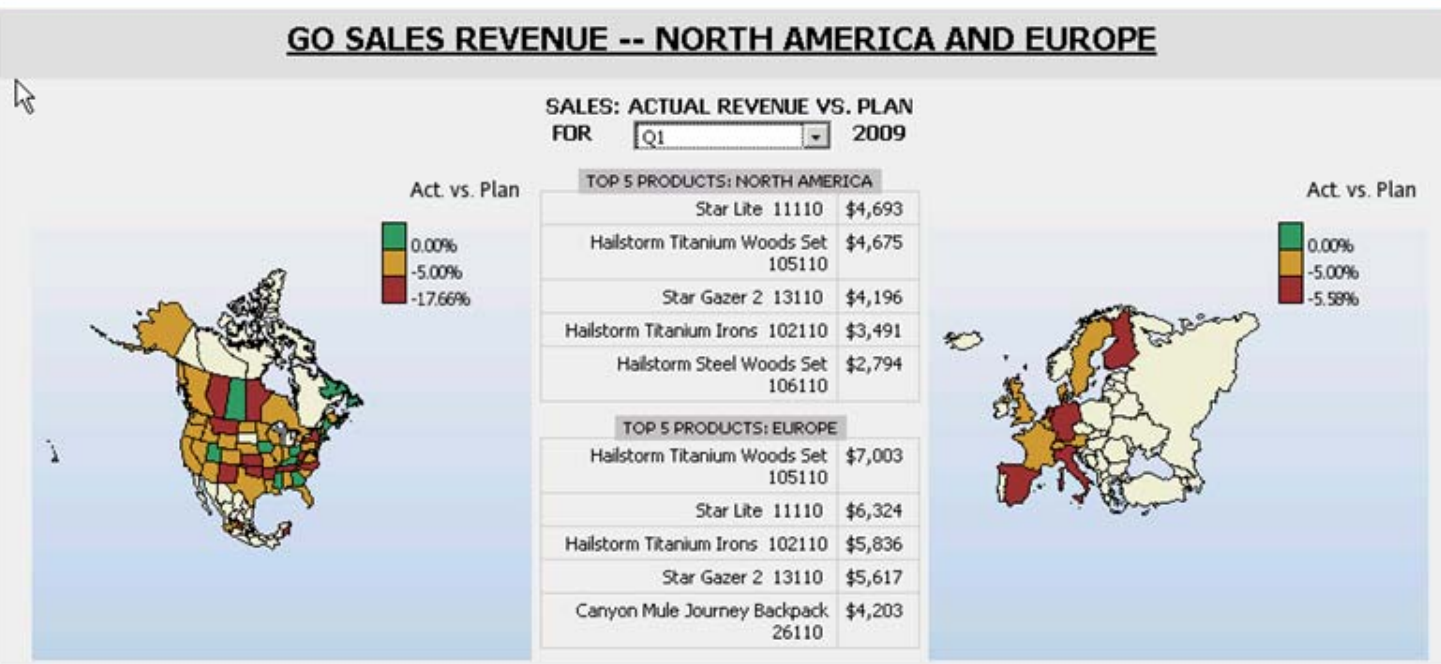
**Dashboard Content**

Name @

- Daily Reports
- Drill Through Reports
- Sales Alerts
- GO Plan vs Actual New
- GO Plan vs Actual New 2
- GO Plan vs Actual NoChart
- GO Retailers -- plan vs actual
- TM1 - Sales Plan Report

Search: Full text and all fields

Advanced

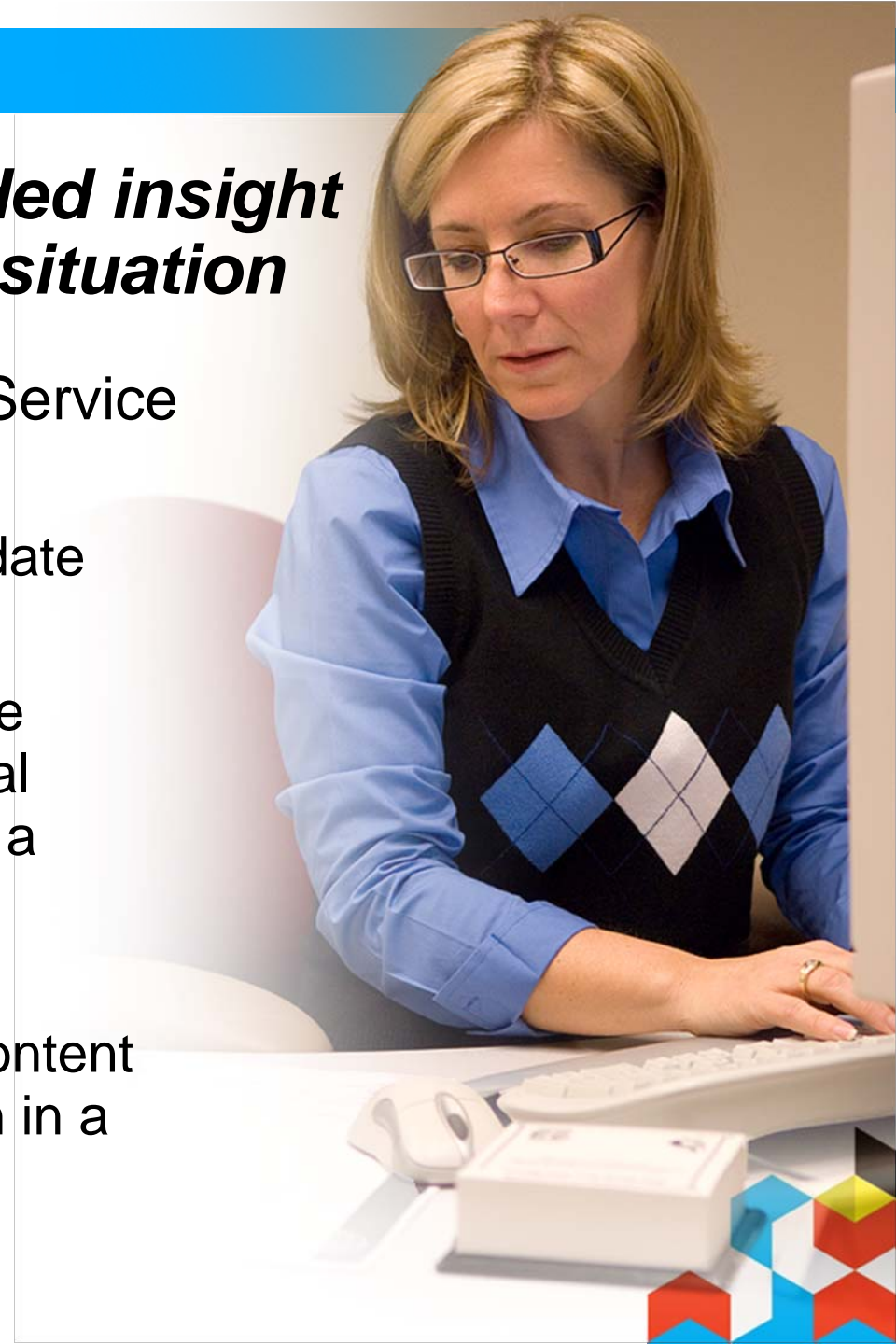


### REVENUE PERFORMANCE: CURRENT vs. PREV. MONTH [\$M]

	May 2009		June 2009		July 2009		
	% DIFF	ACTUAL	PLAN	% DIFF	ACTUAL	PLAN	
<a href="#">GO Americas operations</a>	3.18%	\$36.02	\$34.91	2.85%	\$35.79	\$34.79	\$37.34
<a href="#">GO Central Europe</a>	-6.24%	\$23.97	\$25.56	-6.59%	\$23.26	\$24.90	\$27.58
<a href="#">GO Northern Europe</a>	-6.23%	\$12.42	\$13.25	-6.66%	\$12.62	\$13.52	\$14.72
<a href="#">GO Southern Europe</a>	-6.36%	\$12.08	\$12.90	-6.74%	\$11.32	\$12.14	\$14.09

### ***Summary: Developed added insight to support new business situation***

- With IBM Cognos 8 Mashup Service
  - ✓ Sales Manager was able to view new information to validate new targets
  - ✓ Cognos report was able to be quickly “mashed” with internal data, external data to create a new application
  - ✓ No additional effort by the BI delivery team to deliver BI content as a service for consumption in a web 2.0 environment



Welcome admin

Add Dashlets

Shortcuts

- Create Contact
- Enter Business Card
- Create Account
- Create Lead
- Create Opportunity
- Create Case
- Report Bug
- Schedule Meeting
- Schedule Call
- Create Task
- Compose Email

Last Viewed

- A B Hammer Grou
- A B Hammer Grou
- 5,000 Unit Oppo
- Income Free Inv
- Income Free Inv
- Income Free Inv
- Income Free Inv
- Income Free Inv

New Contact

First Name:

Last Name:

Phone:

Email:

Save

**My Top Open Opportunities**

Opportunity Name	Amount	Expected Close Date
Lexington Shores Corp 189580 - 1000 units	\$10,000.00	2008-09-17
My-Bitty Conglomerate Inc 807239 - 1000 units	\$50,000.00	2008-09-28
MMM Mortuary Corp 277764 - 1000 units	\$1,000,000.00	2008-09-30
BS Funding Coop 126780 - 1000 units	\$75,000.00	2008-09-30
S Cane Sweeteners Ltd 532734 - 1000 units	\$25,000.00	2008-10-02

**My Accounts**

Account Name	Phone	Date Entered
Tortoise Corp 54539	(632) 775-8075	2007-07-29 10:45
Q3 ARVRO III PR 241007	(042) 926-2795	2007-07-29 10:45
Kings Royalty Trust 969776	(116) 184-1534	2007-07-29 10:45
B.H. Edwards Inc 348487	(442) 424-9724	2007-07-29 10:45
5D Invest A/S 6231	(822) 431-9992	2007-07-29 10:45

**My Open Project Tasks**

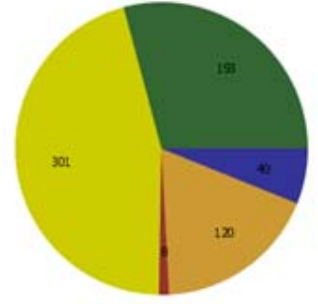
Name	Priority	Due Date	Date Entered	User
Build fortress	Medium	2008-06-10	2007-07-29 10:46	admin
Purchase giant death ray gun	Medium	2008-01-31	2007-07-29 10:46	admin
Threaten all major countries on public television	High	2008-02-23	2007-07-29 10:46	admin
Pick color for new throne	Low	2008-04-26	2007-07-29 10:46	admin
Make friends with woodland creatures who can dig	High	2007-11-13	2007-07-29 10:46	admin

**My Leads**

Name	Office Phone	Date Created
Abby Kam	(482) 429-8599	2007-07-29 10:46
Adelaide Arnette	(489) 686-3974	2007-07-29 10:46
Adele Teague	(112) 837-2594	2007-07-29 10:46
Adrienne Silverman	(372) 393-0871	2007-07-29 10:46
Ahmad Silverberg	(144) 655-7033	2007-07-29 10:46

**Project Efforts (Cognos)**

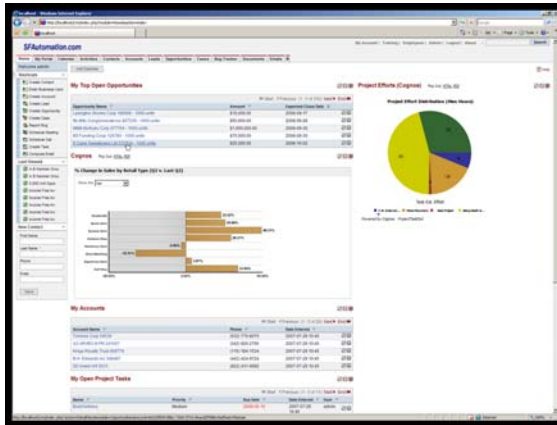
Project Effort Distribution (Man Hours)



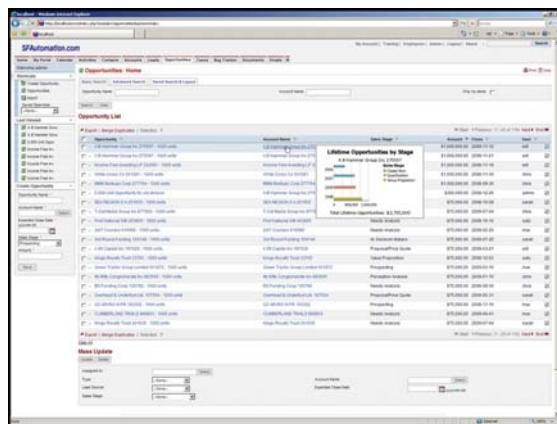
Task Est. Effort

Powered by Cognos ProjectTaskDist

## Let's talk about how and why it was possible



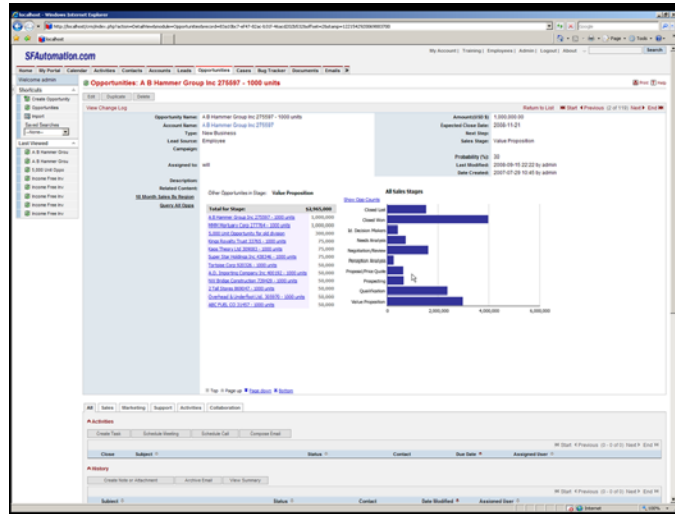
- HTML format was used to embed the report part
- For visualization integration, XML format was used



- Account history is provided with a simple mouse over. Account ID is passed to REST interface in order to retrieve contextual report part.
- REST interface allows for this type of integration with ~ 40 lines of javascript code.



## Let's talk about how and why it was possible



- Drilling to the opportunity that we will try to pull forward based on past successful sales history.
- When the edits are complete to the opportunity, the report part “Other Opportunities in this Stage” adjusts to reflect the application’s context.



## ***Summary: Used information within the sales application used everyday***

- With IBM Cognos 8 Mashup Service
  - ✓ Cognos report was able to be quickly integrated into the sales force automation application
  - ✓ Sales Rep was able to view information relevant to sales opportunity process
  - ✓ No additional work by the BI delivery team to deliver BI content as a service for consumption in the application



## A few more examples?

Sales Manager Desktop

Sales Manager Desktop Report Quick Views

### Alert List

Alert	Sales Stage	Account
LOST DEAL	Closed Lost	Lexington Shores Corp 65218
Need Discount Approval	Proposal/Price Quote	A B Hammer Group Inc 27559
Review Proposal	Proposal/Price Quote	Doggie Diner Co Ltd 716488

Key Information Sales History

Actions

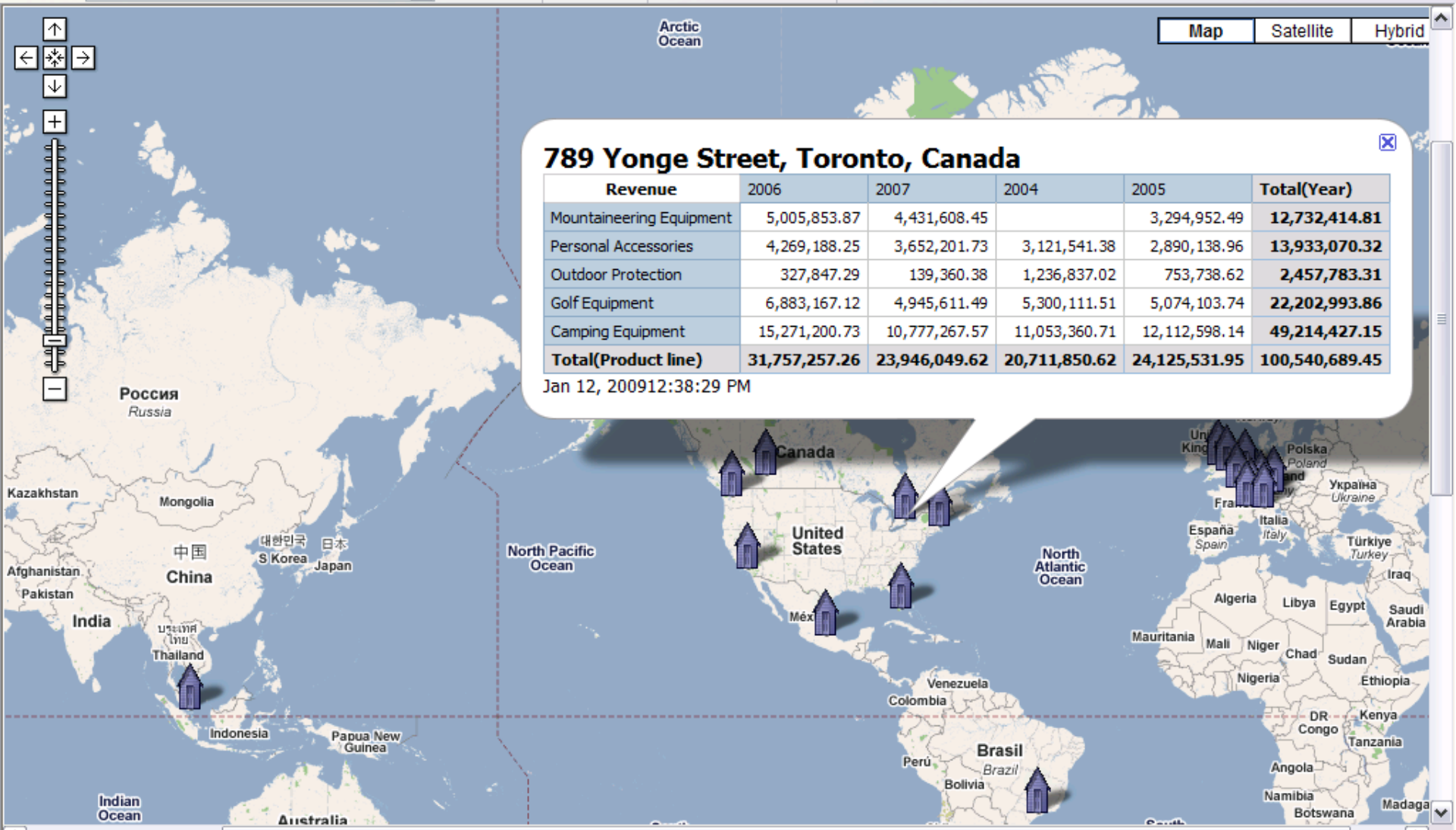
Account: AB Hammer Group Disc. Pct. 25%

Amount: 1,000,000.00

Pie Bar Pie Reject

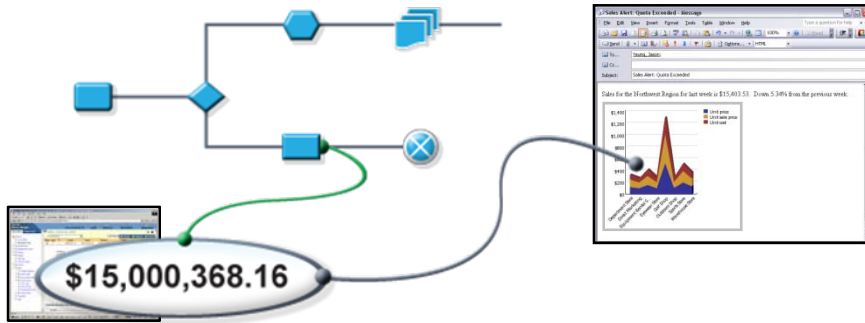
- Desktop SFA or CRM Widget: Push alerts with report content







## The possibilities are endless....



...within BPM solutions?



...as a gadget on the desktop?



...with other visualizations ?




## ***Agenda***


- Introducing IBM Cognos 8 Mashup Service
- How IBM Cognos 8 Mashup Service Works
- Applying IBM Cognos 8 Mashup Service
- **Summary and Next Steps**




# IBM Cognos 8 Mashup Service provides new ways to extend BI



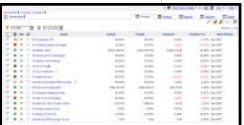
**Reports**



**Ad-hoc queries**



**Analysis**



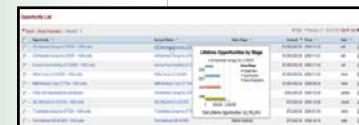
**Scorecards**

**API to Automatically and Securely Expose BI Content as a Web Service**

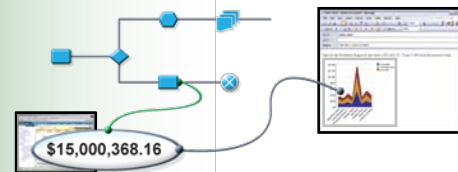
**IBM Cognos 8 Mashup Service**

**Extend the Reach of BI**

**Add Content and Context to your trusted BI**



**Applications**



**Processes**



**Mashups**



**Visualizations**



## ***Next Steps***

- Check out [IBM.com](http://IBM.com) for more information on IBM Cognos 8 Mashup Service
- Find and share ideas on the [Cognos community on developerWorks](#)
- Talk to your application development team today about where to extend your BI investment
- Contact your sales rep today to start using IBM Cognos 8 Mashup Service



## *Continue Your Learning*

- [www.ibm.com/cognos/customercenter](http://www.ibm.com/cognos/customercenter)
  - The Cognos Customer Center is the single place to go for easy access to valuable IBM Cognos resources
- [IBM Cognos Proven Practices](#)
  - Source of tried, tested, and proven technical information to help you succeed with IBM Cognos products in your specific environment
- [IBM Cognos Training Paths](#)
  - View training recommended by role to determine which courses will help you increase your IBM Cognos skills
- [www.ibm.com/cognos/training](http://www.ibm.com/cognos/training)
  - Visit the IBM Cognos Education web pages to understand all of the ways that training can support the success of your solution
- [www.ibm.com/cognos/consulting](http://www.ibm.com/cognos/consulting)
  - Engage a consultant to help you achieve successful implementation and deployment of your software solution



## ***Important Disclaimer***

© Copyright IBM Corporation 2009. All rights reserved.

U.S. Government Users Restricted Rights - Use, duplication or disclosure restricted by GSA ADP Schedule Contract with IBM Corp.

THE INFORMATION CONTAINED IN THIS PRESENTATION IS PROVIDED FOR INFORMATIONAL PURPOSES ONLY. WHILE EFFORTS WERE MADE TO VERIFY THE COMPLETENESS AND ACCURACY OF THE INFORMATION CONTAINED IN THIS PRESENTATION, IT IS PROVIDED "AS IS" WITHOUT WARRANTY OF ANY KIND, EXPRESS OR IMPLIED. IN ADDITION, THIS INFORMATION IS BASED ON IBM'S CURRENT PRODUCT PLANS AND STRATEGY, WHICH ARE SUBJECT TO CHANGE BY IBM WITHOUT NOTICE. THE INFORMATION ON NEW PRODUCTS IS FOR INFORMATIONAL PURPOSES ONLY AND MAY NOT BE INCORPORATED INTO ANY CONTRACT. THE INFORMATION ON ANY NEW PRODUCTS IS NOT A COMMITMENT, PROMISE, OR LEGAL OBLIGATION TO DELIVER ANY MATERIAL, CODE OR FUNCTIONALITY. THE DEVELOPMENT, RELEASE, AND TIMING OF ANY FEATURES OR FUNCTIONALITY DESCRIBED FOR OUR PRODUCTS REMAINS AT THE SOLE DISCRETION OF IBM. IBM SHALL NOT BE RESPONSIBLE FOR ANY DAMAGES ARISING OUT OF THE USE OF, OR OTHERWISE RELATED TO, THIS PRESENTATION OR ANY OTHER DOCUMENTATION. NOTHING CONTAINED IN THIS PRESENTATION IS INTENDED TO, NOR SHALL HAVE THE EFFECT OF, CREATING ANY WARRANTIES OR REPRESENTATIONS FROM IBM (OR ITS SUPPLIERS OR LICENSORS), OR ALTERING THE TERMS AND CONDITIONS OF ANY AGREEMENT OR LICENSE GOVERNING THE USE OF IBM PRODUCTS AND/OR SOFTWARE.

IBM, the IBM logo, ibm.com, IBM Cognos Software, IBM Mashup Center and IBM Cognos 8 BI are trademarks or registered trademarks of International Business Machines Corporation in the United States, other countries, or both. If these and other IBM trademarked terms are marked on their first occurrence in this information with a trademark symbol (® or ™), these symbols indicate U.S. registered or common law trademarks owned by IBM at the time this information was published. Such trademarks may also be registered or common law trademarks in other countries. A current list of IBM trademarks is available on the Web at "Copyright and trademark information" at [www.ibm.com/legal/copytrade.shtml](http://www.ibm.com/legal/copytrade.shtml)

Google, SugarCRM

Other company, product, or service names may be trademarks or service marks of others.



THANK  
YOU

