



DEMAND PLANNING BLUEPRINT DEMAND PLANNING SETUP GUIDE A WEB-BASED PERFORMANCE MANAGEMENT SOLUTION



Table of Contents

Blueprint Overview	3
Making Content Files Available for Each Application	4
2.1 Unzipping the 'Demand Planning Blueprint Content'	4
2.2 Copying the Necessary Files	4
IBM Cognos TM1 Content	5
3.1 Configure a new IBM Cognos TM1 Server instance	5
3.1.1 Copy the tm1s.lic File	5
3.1.2 Modify the Tm1s.cfg server configuration file	5
3.1.3 Modify/Create the Server Shortcut	6
3.2 Testing the new IBM Cognos TM1 Server instance	7
3.3 Setting Up the Contributor Application	9
IBM Cognos 8 BI Content	13
4.1 Create the BI data source	13
4.2 Import BI Deployment Package	18
4.3 Testing IBM Cognos Dashboard Content	22



Blueprint Overview

This document explains the content and provides installations steps for a web-based solution reporting for the Demand Planning Blueprint.

IBM Cognos Blueprints are pre-defined data, process, and policy software models developed in partnership with leading academic institutions to address specific business process problems. They are essentially “quick-start” data models that IBM Cognos customers can download and implement at no extra cost.

The Demand Planning Blueprint demonstrates how customer managers can plan at the individual customer and product SKU level, and product demand planners can plan total demand at the product SKU level using data from the customer plan. The Blueprint consists of cost models, pre-defined drivers, business transaction costing, chargeback models and invoicing, an activity based costing data model, data extraction and transformation and user configurable reports that support ad hoc functionality, including dashboards and Web-based planning processes.

Blueprint Contents:

1. **Demand Planning Blueprint Content.zip**
This is the entire file structure for the BI deployment, Framework Manager Model, TM1 model and graphics with a categorized folder structure to house the extracted files.
2. **Demand Planning TM1 Application.zip**
This file contains the TM1 Workforce Planning Application files. The TM1 Application will must be configured to point at your existing TM1 9.5 Environment.
3. **Demand Planning BI Deployment.zip**
This is the BI Deployment file consisting of reports and portal pages specific to this Blueprint.
4. **Demand Planning Blueprint Setup Guide.pdf**
Description of the necessary files and steps needed to setup both environments for the Planning and BI portions of the Blueprint.
5. **Demand Planning Images.zip**
Images required when rendering dashboards and reports.
6. **Demand Planning.zip**
This file is the Contributor Deployment file which will be imported through the TM1 Administration user interface.
7. **Demand Planning.Ink**
This is a shortcut which can be modified to launch the Blueprint TM1 Application.



Making Content Files Available for Each Application

2.1 Unzipping the 'Demand Planning Blueprint Content'

Unzipping the '**Workforce Planning Blueprint Content**' file will create the following directories:

Name ▲	Size	Type	Date Modified
Deployment File - Reports		File Folder	12/22/2009 1:08 AM
Documentation		File Folder	12/22/2009 12:26 AM
Framework Manager Model		File Folder	12/22/2009 12:44 AM
Graphics, Files, etc		File Folder	12/22/2009 12:26 AM
TM1 Application		File Folder	12/22/2009 12:48 AM
TM1 Application Shortcut and Deployment		File Folder	12/22/2009 12:49 AM

* We will reference these directories, which store the pertinent files.

2.2 Copying the Necessary Files

1. Copy the "**Demand Planning BI Deployment.zip**" file from the '**Deployment File – Reports**' folder to the **<IBM Cognos 8 install location>\deployment** folder.

Note: Depending upon the BI environment configuration the location of the deployment folder may be setup to a different server, confirm the location with the BI administrator.

2. Copy the extracted 'Demand Planning Images.zip' contents from the '**Graphics, Files, etc**' folder to the **<IBM Cognos 8 install location>/webcontent/samples/images** folder.

Note: For multi-server installation the images would need to be copied over the Gateway servers. Verify with the BI Administrator the architecture of the BI environment before copying the files

3. Copy the contents of the 'TM1 Application' folder and both files located in the TM1 Application Shortcut and Deployment folder to a directory of your choice, for example purposes we will use
C:\Cognos Innovation Center\Blueprints\Demand Planning Blueprint



IBM Cognos TM1 Content

The following steps will navigate through the steps required to create a new IBM Cognos TM1 Server instance and configure the objects needed for the IBM Cognos TM1 content to work properly.

3.1 Configure a new IBM Cognos TM1 Server instance

The following steps provide a quick guideline on how to get a new IBM Cognos TM1 server instance, however a more detailed explanation can be found in the IBM Cognos TM1 Server Administration document.

To configure a new IBM Cognos TM1 Server instance the following files are required:

1. Tm1s.cfg
2. Tm1s.lic
3. A shortcut to execute tm1s.exe using the Blueprint content as the working directory.

3.1.1 Copy the tm1s.lic File

The **tm1s.lic** file is included in your IBM Cognos TM1 installation. This file can be copied from <YourIBMCognosTM1_DirectoryInstall>/bin folder. The content of this file is similar to:

```
DATABASE_TYPE=TM1 PROPRIETARY
CLASS=505
LICENSE=<YourLicense>
MAX_USERS=99999
MAX_READONLY_USERS=99999
EXPIRE_DT=<YourExpiryDate>
LOCATION=
ORGANIZATION=<YourCompany>
LICENSOR=16699
INSTALL_ID=13108
PRODUCT=TM1Server8
.....
```

Copy the **tm1s.lic** file to '**C:\Cognos Innovation Center\Blueprints\Demand Planning Blueprint**' to create a new server instance.

3.1.2 Modify the Tm1s.cfg server configuration file

From the '**C:\Cognos Innovation Center\Blueprints\Demand Planning Blueprint**' folder, modify the '**tm1s.cfg**' file.



This file needs to be modified to **point to the IBM Cognos TM1 Admin Server on your environment.**

The file provided will be similar to:

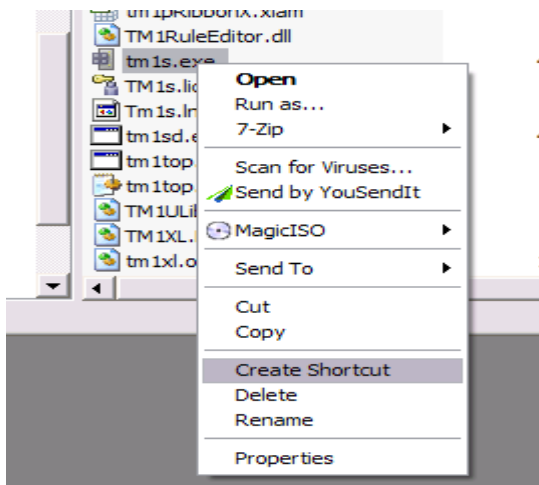
```
[TM1S]
ServerLogging=F
SecurityPackageName=Kerberos
IntegratedSecurityMode=1
UseSSL=T
ServerName=demand planning
DataBaseDirectory=E:\tm1\models\DemandPlanning
AdminHost=localhost
PortNumber=11111
ClientMessagePortNumber=12346
Language=ENG
SaveTime=
DownTime=
ProgressMessage=True
AuditLogOn=F
AuditLogMaxFileSize=100 MB
AuditLogUpdateInterval=60
DefaultMeasuresDimension=T
```

The parameters highlighted in **red** need to be reviewed and modified accordingly for your company's environment. If there is certainty that the default TCP ports above are not being used, they can be left unchanged.

The "AdminHost" parameter would need to be changed to reflect the IBM Cognos TM1 Admin Sever host setting in your environment.

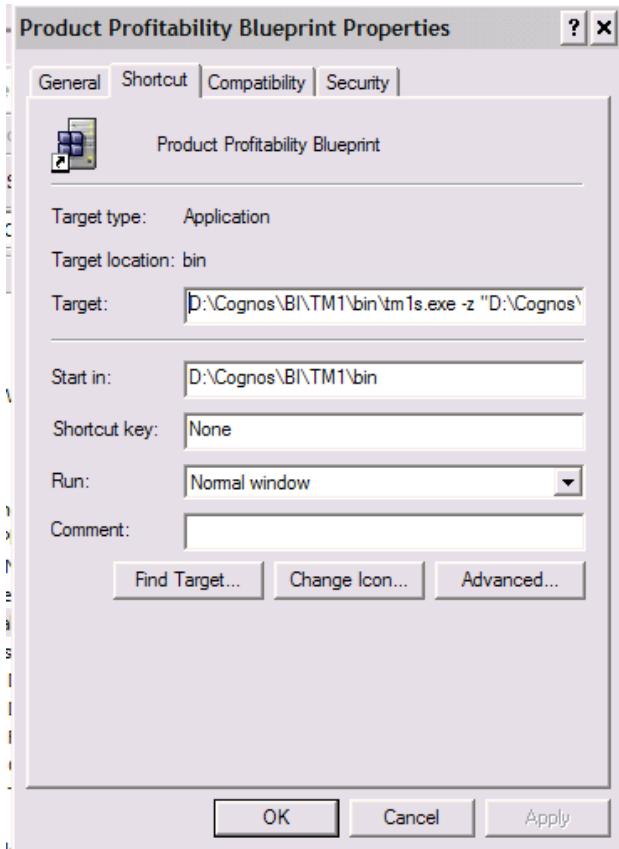
3.1.3 Modify/Create the Server Shortcut

Navigate to '<YourIBMCognosTM1_DirectoryInstall>/bin' folder; **create a shortcut** to tm1s.exe.





1. **Copy the shortcut** created to '**C:\Cognos Innovation Center\Blueprints\Demand Planning Blueprint**'
2. **Rename the shortcut** to be "Demand Planning Blueprint"
3. **Edit the Shortcut Properties**



The **"Target"** property of the shortcut needs to be changed to read:

<YourIBMCognosTM1InstallFolder>\bin\tm1s.exe -z 'C:\Cognos Innovation Center\Blueprints\Demand Planning Blueprint'

Notice that the last portion of the command is the folder where the IBM Cognos TM1 content was extracted to.

Click onto **OK** to save the changes.

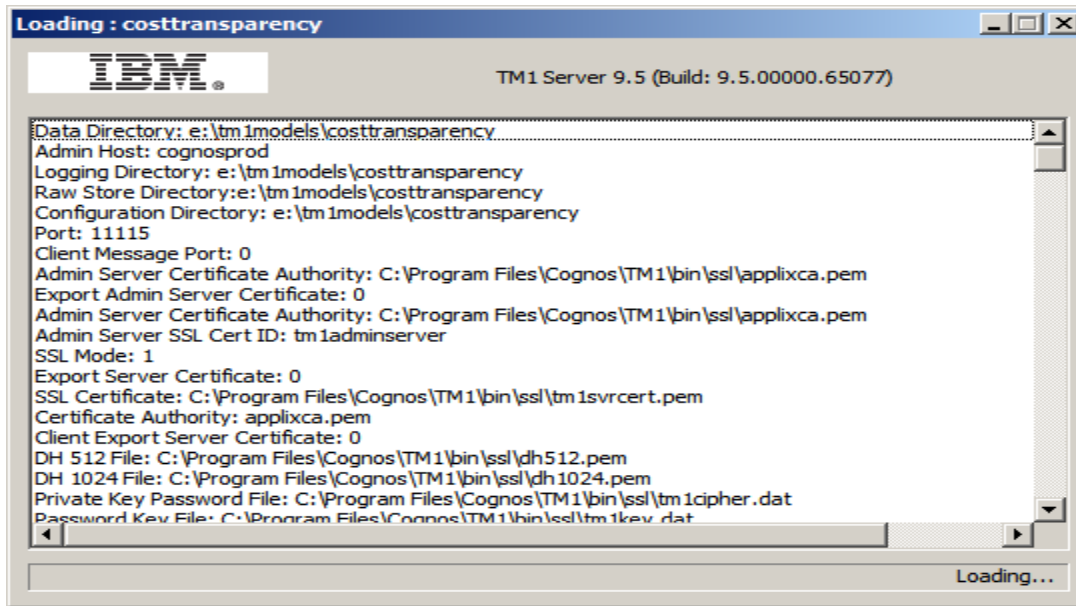
An example of the Cost Transparency shortcut has been included in the TM1 Application Shortcut and Deployment Folder

3.2 Testing the new IBM Cognos TM1 Server instance

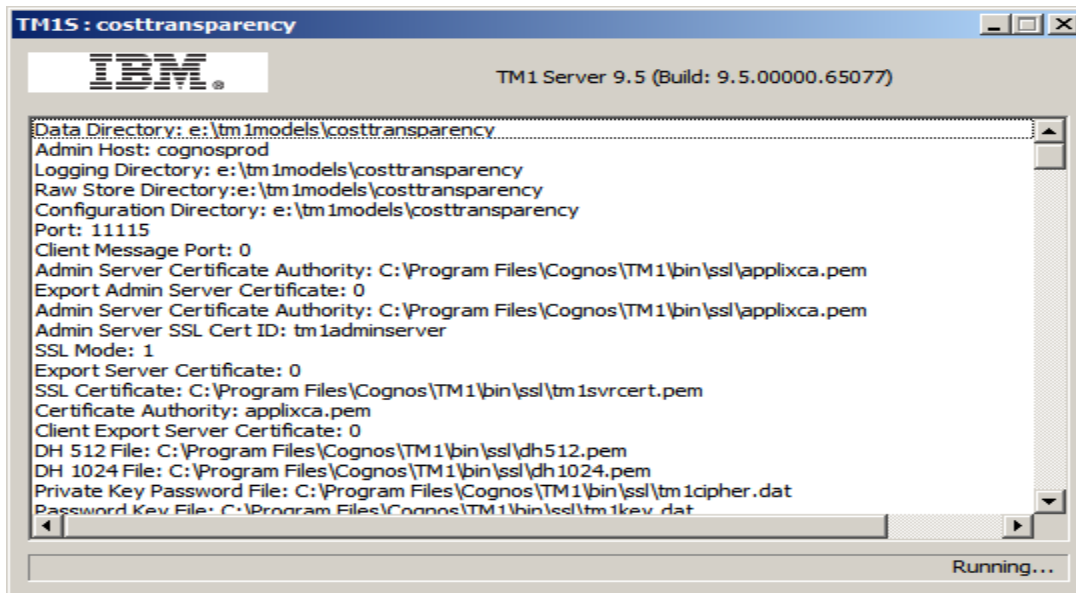
From the '**C:\Cognos Innovation Center\Blueprints\Demand Planning Blueprint**' folder, double click the 'Cost Transparency' shortcut.



The following dialog will appear:



After all cubes have been loaded, the lower right corner of the dialog will display **Running...**:



Once the newly created IBM Cognos TM1 Server instance is up and running, Architect, Contributor and/or IBM Cognos TM1Web can be used to navigate through the content.

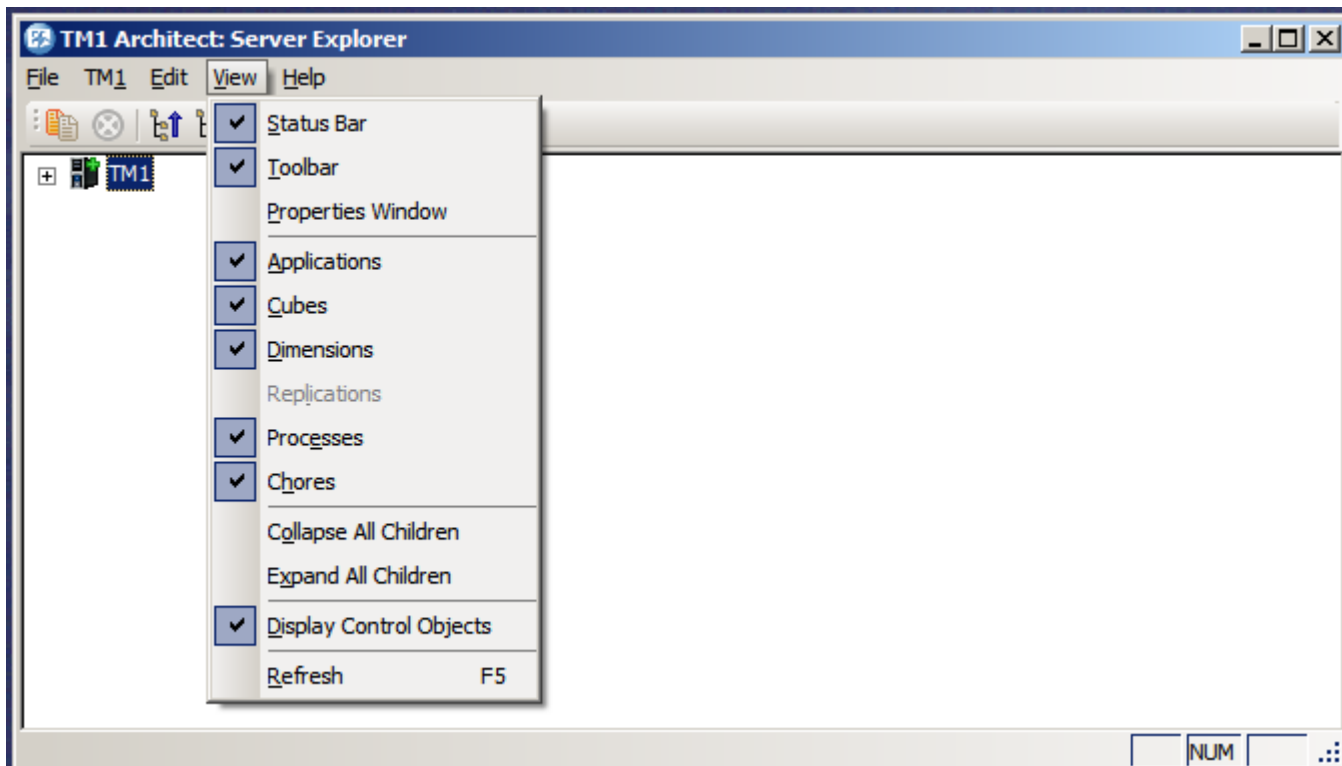


3.3 Setting Up the Contributor Application

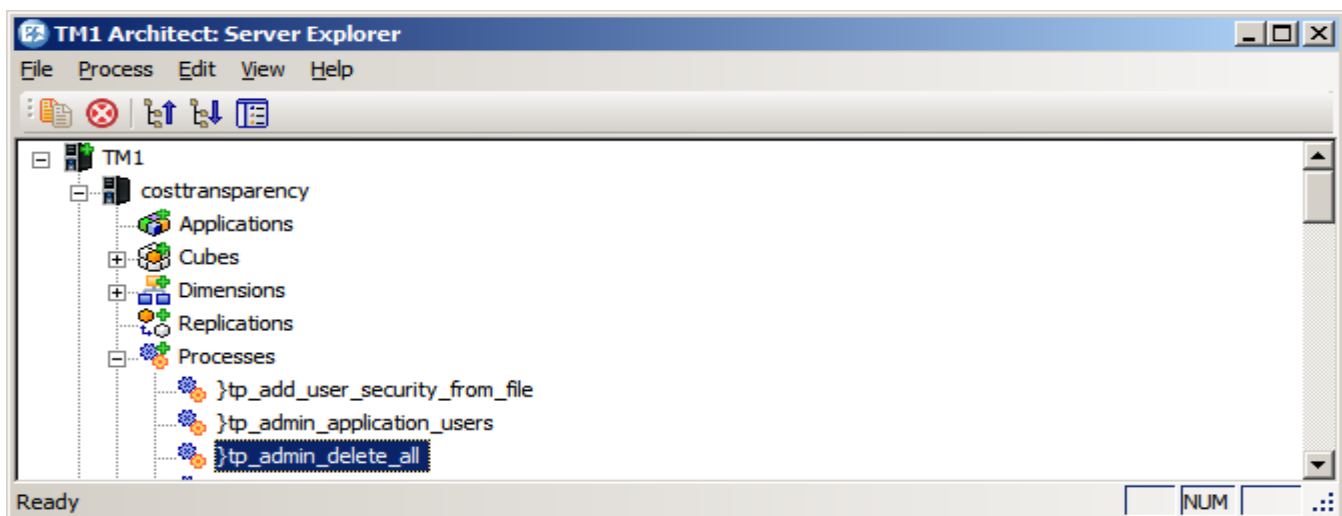
3.3.1 Open TM1 Architect

3.3.2 Double click the **demand planning** application and **Login** as User: **admin** and Password: **apple**

3.3.3 Click on the Menu Item – **View** and validate **Display Control Objects** is checked

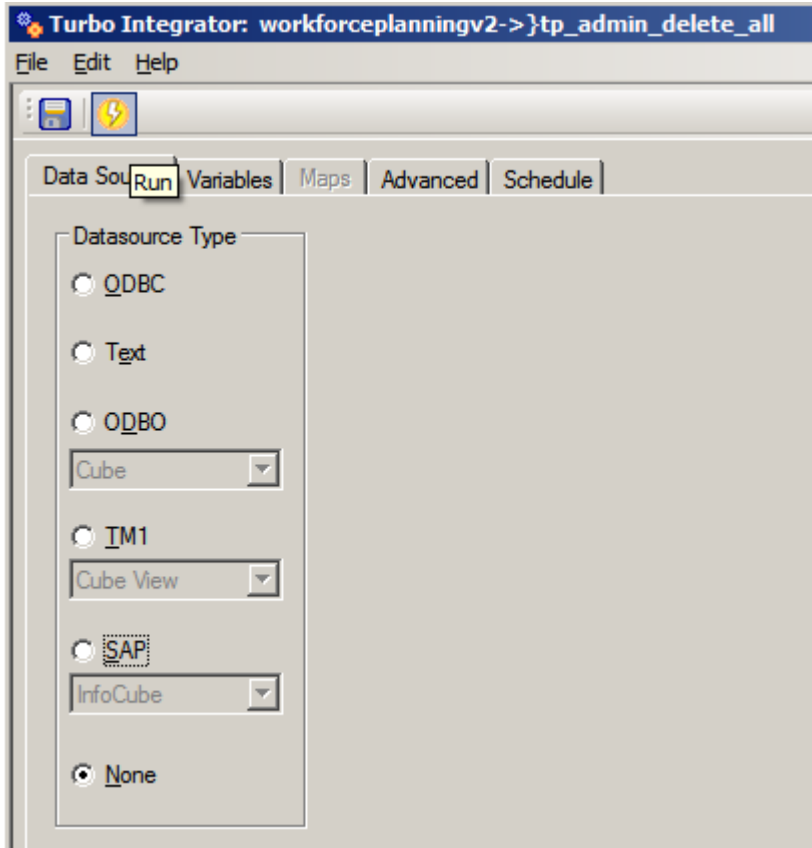


3.3.4 Expand **Processes** node and double click **}tp_admin_delete_all**





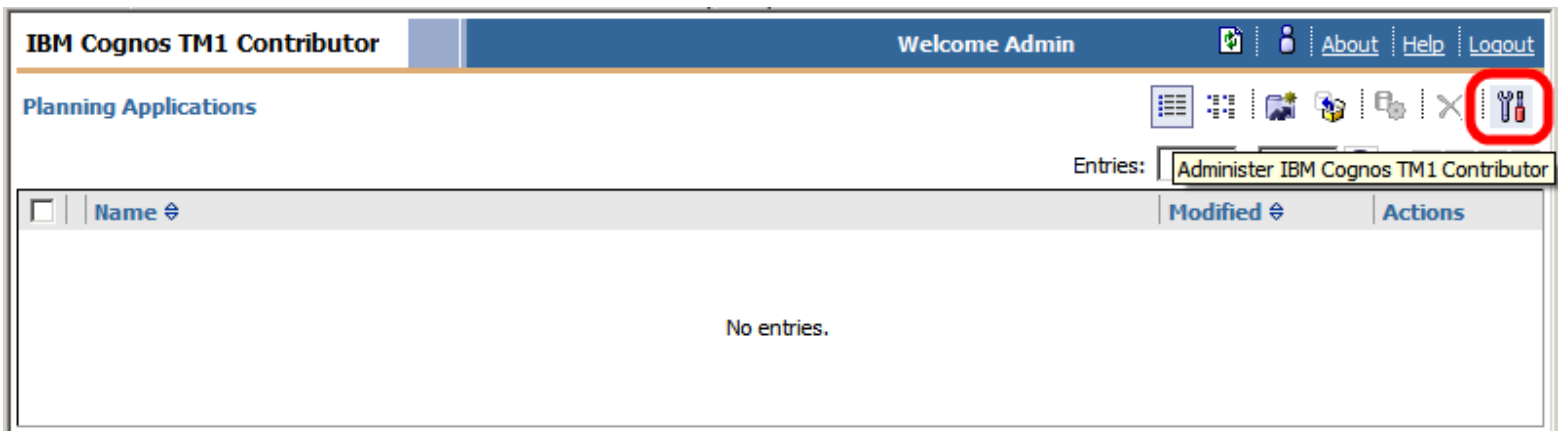
3.3.5 Click run



3.3.6 Copy the "Customer Demand Planning.zip and Product Demand Planning.zip" files into
C:\Cognos Innovation Center\Blueprints\Demand Planning Blueprint

3.3.7 Launch your TM1 Contributor environment, for example, http://yourTM1_Server/pmpsvc/ and Login as User: **admin**
and Password: **apple**

3.3.8 Click **Administer IBM Cognos TM1 Contributor**





- 3.3.9 Click **Add...** under the Server Names: section
- 3.3.10 Enter your **TM1 Admin Host** and click the **Refresh** icon
- 3.3.11 For the Server Name: select **Demand Planning** and **OK**

- 3.3.12 Click **OK**
- 3.3.13 Click **OK**
- 3.3.14 Click the **Import Application** icon

- 3.3.15 Choose **yourTM1ServerName:demand planning** for the TM1 Server
- 3.3.16 Browse to **C:\Cognos Innovation Center\Blueprints\Demand Planning Blueprint** and select the **"Customer Demand Planning.zip"**



3.3.17 Uncheck Import application security and Click Import

Application Import Help ×

Specify your import file and import settings.

TM1 Server:
 TM1Server:BlueprintName

Application file:
 E:\TM1Models\Workforce Planning V2.zip Browse...

☐ Import application security
☒ Import application properties


Import Cancel

3.3.18 Click the **Activate Application** icon, repeat steps 3.3.9 – 3.3.18 for the Product Demand Planning portion as well

IBM Cognos TM1 Contributor Welcome Admin About Help Logout

Planning Applications

Entries: 1 - 1

Name	Modified	Actions
Blueprint Name	December 21, 2009 1:12:30 PM PST	

Activate Application - Blueprint Name

3.3.19 Click the **Demand Planning** link to test, if installed correctly it should resemble the following

IBM Cognos TM1 Contributor Welcome Admin About Help Logout

Contributions

- Business Analyst
- Reviews
- Business Analyst

You are a reviewer or contributor for:

Name	State	Ownership	Reviewer	Last Data Commit
Business Analyst	Not Started	None	None	Never committed

User Instructions

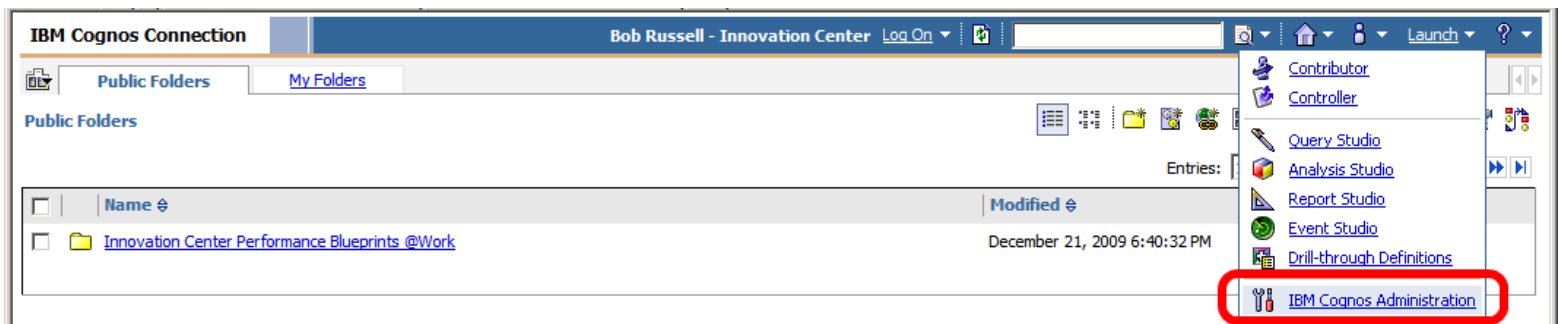


IBM Cognos 8 BI Content

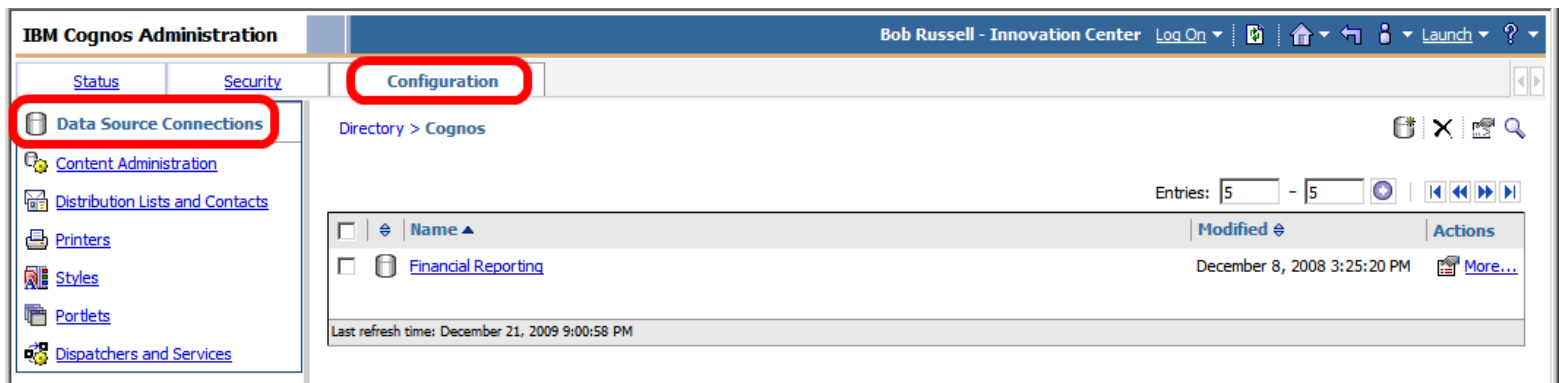
The following steps will navigate through the steps required to configure the objects needed for the IBM Cognos BI content to work properly.

4.1 Create the BI data source

- 4.1.1 Open a browser window and go to your **IBM Cognos Connection** homepage. If Authentication is setup, login with a directory **Administrator** user
- 4.1.2 Click **Launch** and select **IBM Cognos Administration**

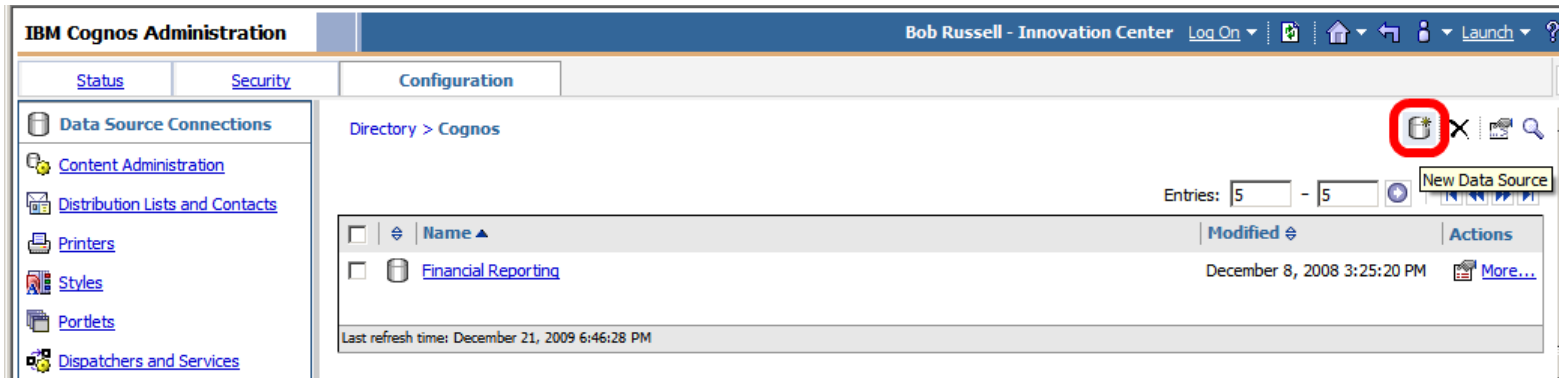


- 4.1.3 Click on the **Configuration** tab; make sure 'Data Source Connections' is selected

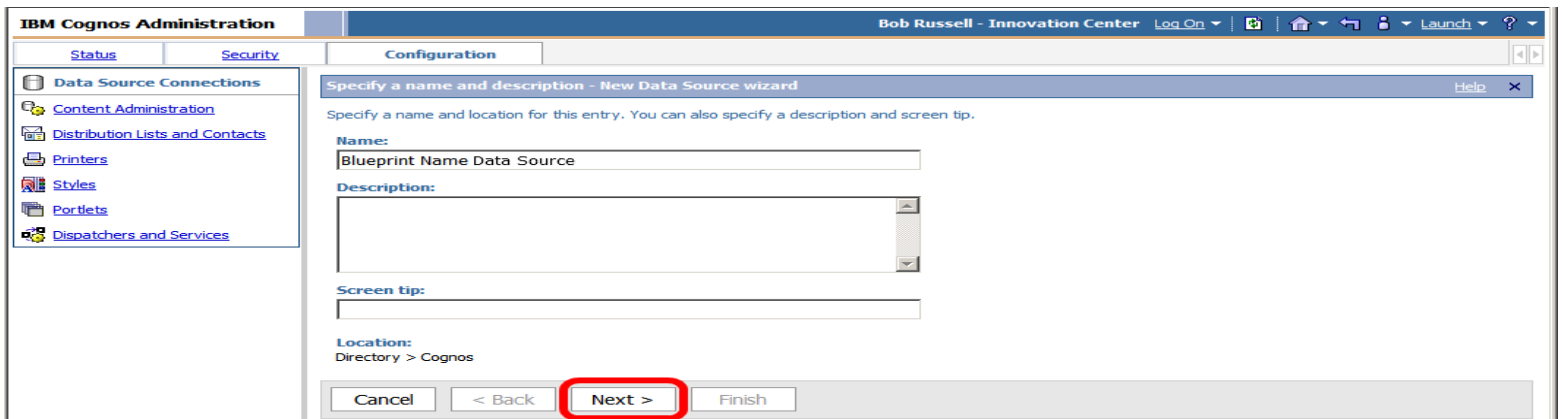




4.1.4 Click the New Data Source icon



4.1.5 Name the Data Source exactly as: "Demand Planning" then click **Next >**





4.1.6 Select the 'TM1' option; then click **Next >**

A screenshot of the IBM Cognos Administration interface. The main window is titled 'Specify the connection - New Data Source wizard'. On the left, there is a sidebar with a tree view containing 'Data Source Connections' and several sub-items like 'Content Administration', 'Distribution Lists and Contacts', 'Printers', 'Styles', 'Portlets', and 'Dispatchers and Services'. The main area of the wizard contains the following elements:

- A title bar: 'Specify the connection - New Data Source wizard' with a 'Help' button and a close 'X' button.
- Instructional text: 'Specify the parameters for the connection of this new data source. The name of the data source is used to set the name of the connection.'
- 'Type:' section: A dropdown menu currently showing 'TM1'.
- 'Isolation level:' section: Two radio button options. The first is 'Use the default object gateway' (which is selected). The second is 'Specify a value:', followed by a dropdown menu showing 'Cursor stability'.
- Navigation buttons at the bottom: 'Cancel', '< Back', 'Next >' (which is highlighted with a red rectangle), and 'Finish'.



4.1.7 Fill in the parameters for the TM1 connection then click [Test the connection...](#)

IBM Cognos Administration | Bob Russell - Innovation Center | Log On | Home | Launch | Help

Configuration

Data Source Connections

- Content Administration
- Distribution Lists and Contacts
- Printers
- Styles
- Portlets
- Dispatchers and Services

Specify the TM1 connection string - New Data Source wizard

Edit the parameters to build a TM1 connection string.

Administration Host:
your TM1 Admin Host Server

Server Name:
Blueprint Name (EXACTLY as it appears in TM1 Architect)

Signon
Select the type of authentication to use, whether a password is required and whether to create a signon.

☐ No authentication

☐ An external namespace:
LDAP (Active)

☒ Signons

☒ Password

☒ Create a signon that the Everyone group can use:

User ID:
admin

Password:
•••••

Confirm password:
•••••

Testing
[Test the connection...](#)

Cancel < Back Next > Finish

4.1.8 Click **Test** to verify the connection is setup correctly

IBM Cognos Administration | Bob Russell - Innovation Center | Log On | Home | Launch | Help

Configuration

Data Source Connections

- Content Administration
- Distribution Lists and Contacts
- Printers
- Styles
- Portlets
- Dispatchers and Services

Test the connection - New Data Source wizard

Test the parameters that make up the database connection.

Connection string:
^User ID:^?Password:;LOCAL;TM1AdminHost=cognosprod;TM1ServerName=workforceplanningv2;UID=%s;PWD=%s

Test

Dispatcher:
http://cognosprod:9300/p2pd (Configuration)

Test the connection using:

User ID:
admin

Password:
••••••••

Close



4.1.9 The following screen should indicate **Succeeded** below the Status then click **Close**

IBM Cognos Administration | Bob Russell - Innovation Center | Log On | Home | Launch

Configuration

Data Source Connections

View the results - Test the connection

Name	Status	Message
... > http://cognosprod:9300/p2pd	Succeeded	

Close

4.1.10 Click **Close** again

IBM Cognos Administration | Bob Russell - Innovation Center | Log On | Home | Launch

Configuration

Data Source Connections

Test the connection - New Data Source wizard

Test the parameters that make up the database connection.

Connection string:
^User ID: ^?Password: ;LOCAL;TM;TM1AdminHost=cognosprod;TM1ServerName=workforceplanningv2;UID=%s;PWD=%s

Test

Dispatcher:
http://cognosprod:9300/p2pd (Configuration)

Test the connection using:

User ID:
admin

Password:
.....

Close

4.1.11 Click **Finish** to add the new data source

IBM Cognos Administration | Bob Russell - Innovation Center | Log On | Home | Launch

Configuration

Data Source Connections

Specify the TM1 connection string - New Data Source wizard

Edit the parameters to build a TM1 connection string.

Administration Host:
your TM1 Admin Host Server

Server Name:
Blueprint Name (EXACTLY as it appears in TM1 Architect)

Signon

Select the type of authentication to use, whether a password is required and whether to create a signon.

☐ No authentication

☐ An external namespace:
LDAP (Active)

☒ Signons

☒ Password

☒ Create a signon that the Everyone group can use:

User ID:
admin

Password:
.....

Confirm password:
.....

Testing

Test the connection...

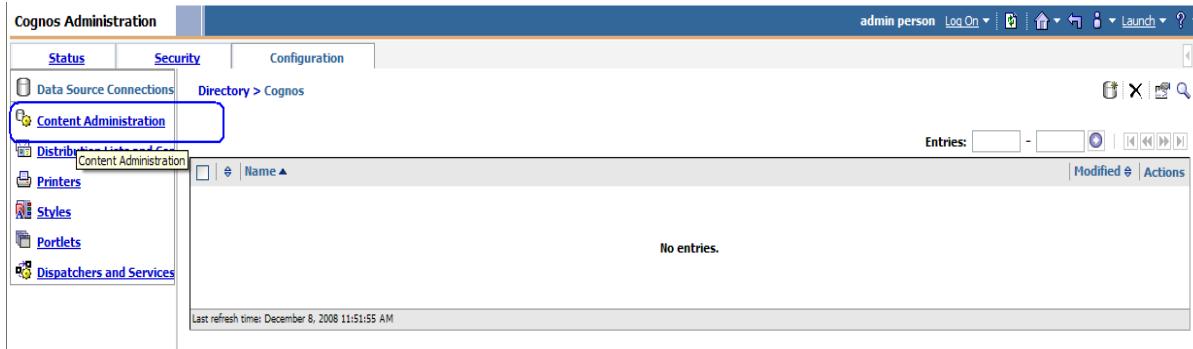
Cancel < Back Next > Finish



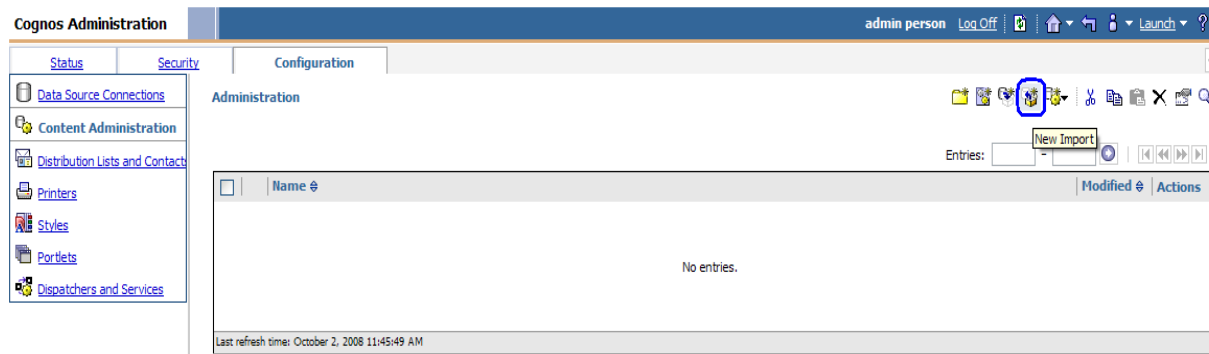
4.2 Import BI Deployment Package

4.2.1 Run the Import Wizard to bring in the BI Content into the IBM Cognos Connection portal

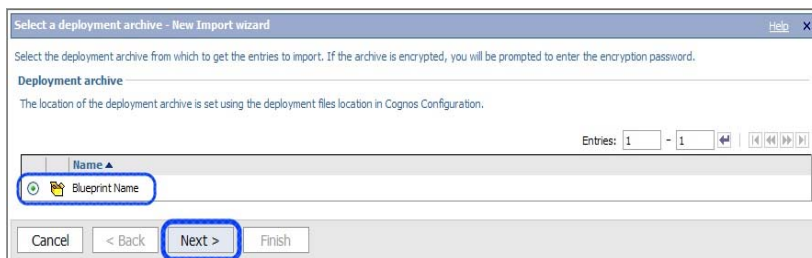
4.2.2 From the screen in the previous step, select **Content Administration**



4.2.3 Click the **New Import** icon 



4.2.4 Select the import package named '**Demand Planning BI Deployment**' then click **Next >**





4.2.5 Verify the Name is 'Demand Planning BI Deployment' then click **Next >**

Specify a name and description - New Import wizard

Specify a name and location for the deployment specification. You can also specify a description and screen tip.

Name:
Blueprint Name

Description:
[Empty text area]

Screen tip:
[Empty text area]

Location:
Administration
Select another location...

Cancel < Back **Next >** Finish

4.2.6 Specify the options and **DO NOT** check 'Disable after import' then click **Next >**

Select the public folders content - New Import wizard

Select one or more packages or folders and select the options to include in the import.

Public folders content

Change the target name of packages and folders if you do not want to overwrite them in the target with packages and folders from the deployment archive. Disable the packages and folders if you do not want users to access them in the target after the import.

<input checked="" type="checkbox"/>	Name	Target name	<input type="checkbox"/> Disable after import	In target content	Modified
<input checked="" type="checkbox"/>	Blueprint Name	Blueprint Name	<input type="checkbox"/>		

Options

☒ include report output versions

Conflict resolution:

☐ Keep existing entries

☒ Replace existing entries

☒ include run history

Conflict resolution:

☐ Keep existing entries

☒ Replace existing entries

☒ include schedules

Conflict resolution:

☐ Keep existing entries

☒ Replace existing entries

Cancel < Back **Next >** Finish

4.2.7 Specify the general options, select 'The user performing the import' and 'New entries only' then click **Next >**

Specify the general options - New Import wizard

Specify the options applicable to all the entries in the import.

Access permissions

☒ Include access permissions

☐ Apply to new entries only

☒ Apply to new and existing entries

External namespaces

☐ Include references to external namespaces

☒ Do not include references to external namespaces

Entry ownership

Set the owner to:

☐ The owner from the source

☒ The user performing the import

Apply to:

☒ New entries only

☐ New and existing entries

Cancel < Back **Next >** Finish



4.2.8 Review the summary options selected then click **Next >**

Review the summary - New Import wizard

The Import wizard is ready to import into the target environment.
If you want to change any settings, click Back.
If you are satisfied with the settings and want to select whether to run, schedule, or save only, click Next.

Deployment specification

Name: Blueprint Name Description:

Deployment archive

Name: Blueprint Name

Public folders content

Name	Target name	Disable after import	In target content	Modified
Blueprint Name	Blueprint Name			

Options:

Include report output versions
Replace existing entries
Include run history
Replace existing entries
Include schedules
Replace existing entries

Directory content

Cancel < Back **Next >** Finish

4.2.9 Choose 'Save and run once' then click **Finish**

Select an action - New Import wizard

Select whether you want to run, schedule, or save only, when the wizard does.

Action:

☒ Save and run once
☐ Save and schedule
☐ Save only

Cancel < Back Next > **Finish**

4.2.10 Specify the time to run the import select 'Now' and 'Keep the existing report specifications versions' then click **Run**

Run with options - Blueprint Name

Select when you want to run this import.

Time:

☒ Now
☐ Later:
May 22, 2008
2 : 48 PM

Content:

Name:

- ☒ Content store
- ☒ Directory
- ☒ Cognos namespace
- ☒ Public Folders
- ☒ Blueprint Name

Report specification upgrade

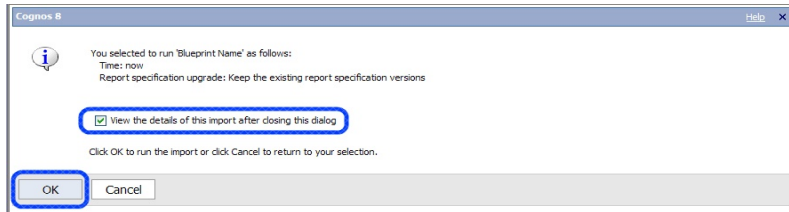
You may want to keep existing report specification versions for compatibility with existing applications.

☐ Upgrade all report specifications to the latest version
☒ Keep the existing report specification versions

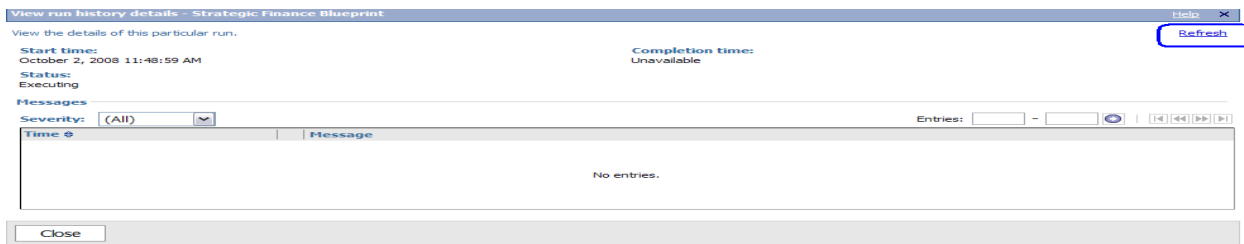
Run Cancel



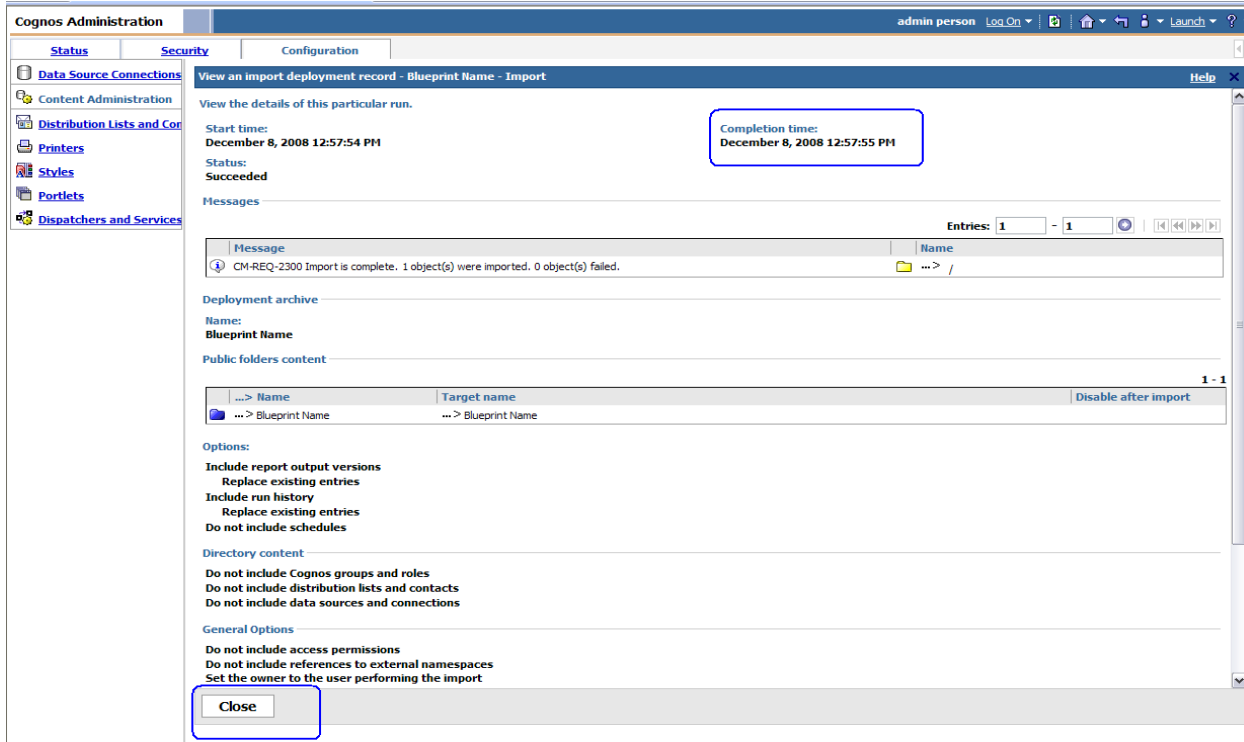
4.2.11 Check 'View the details of this import after closing this dialog' then click OK



4.2.12 Initial view of the import deployment record will be blank press the 'Refresh' hyperlink.



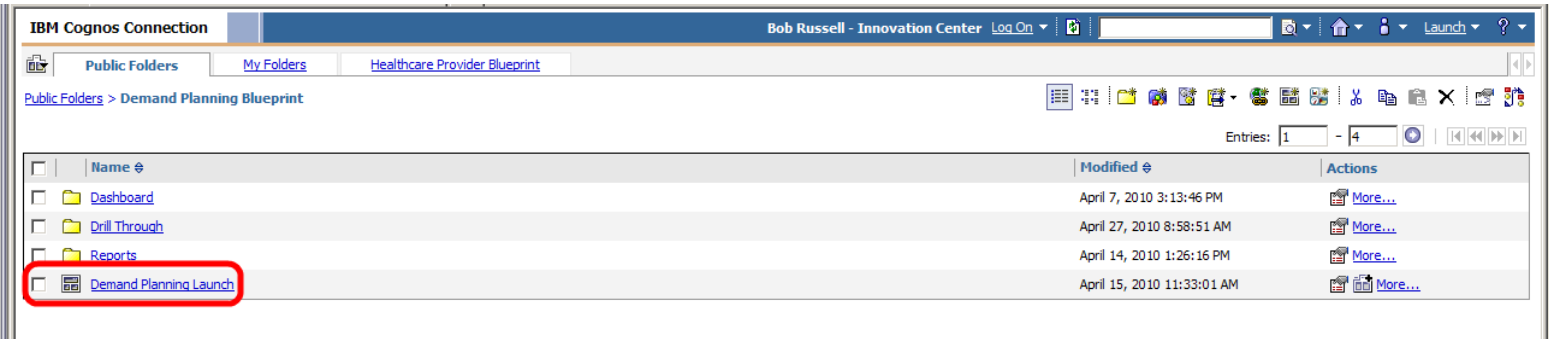
4.2.13 If the deployment import has not finished click on 'Refresh' again until it shows a completion time then click Close.



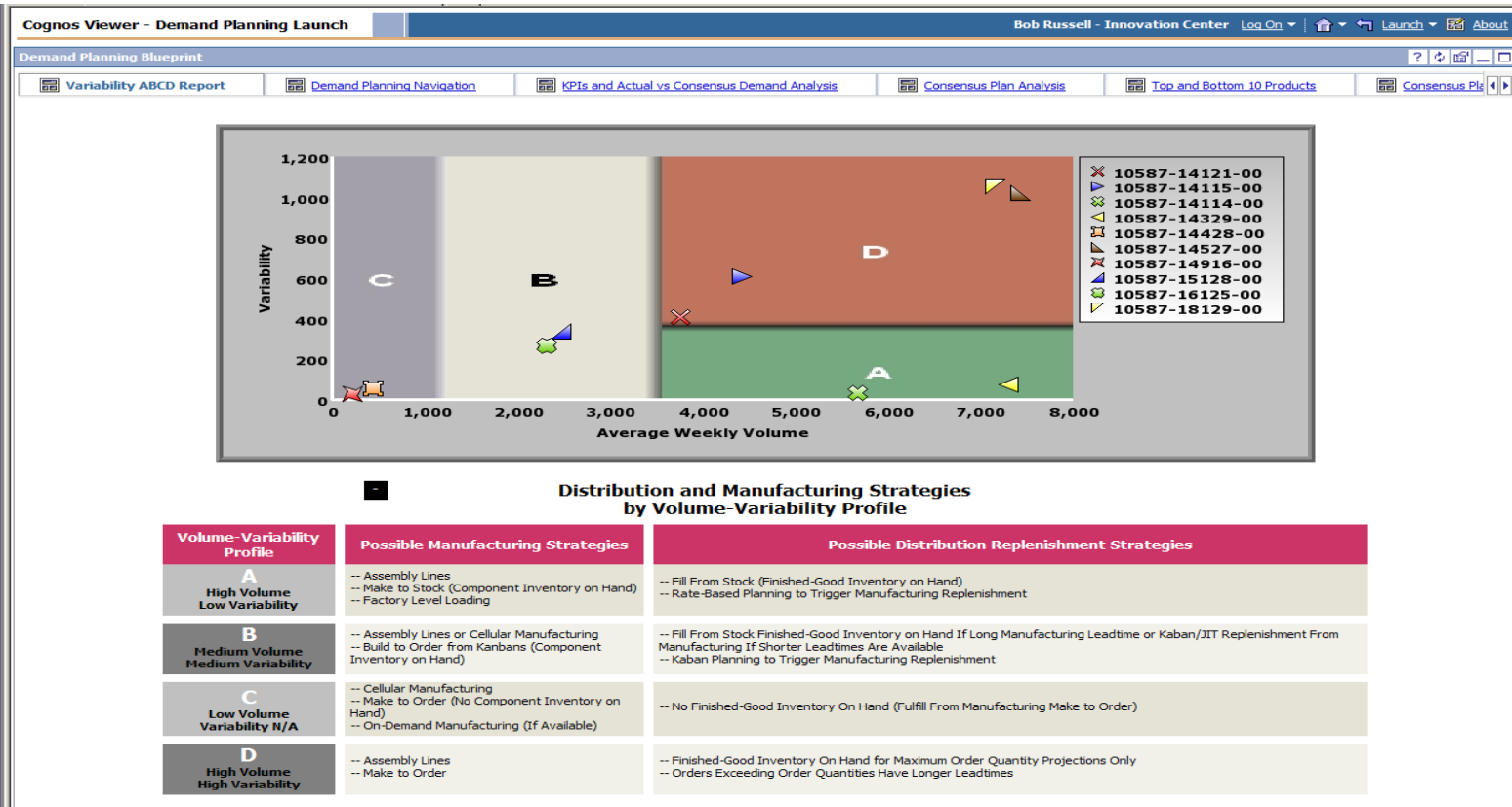


4.3 Testing IBM Cognos Dashboard Content

After the Import is performed a new folder will appear named **‘Demand Planning Blueprint’** in the IBM Cognos Connection portal. The content of this folder will display as:



To ensure the content is working correctly, click the **‘Demand Planning Launch’** link as highlighted above:



Testing can then be performed on each of the dashboard pages to obtain the dashboards displaying your organization’s data.