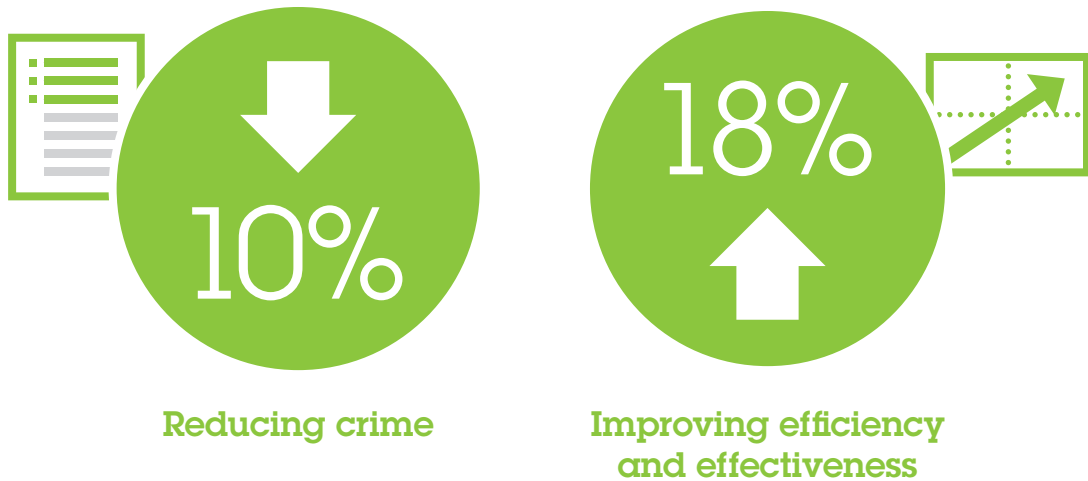


Revealing law enforcement's real ROI

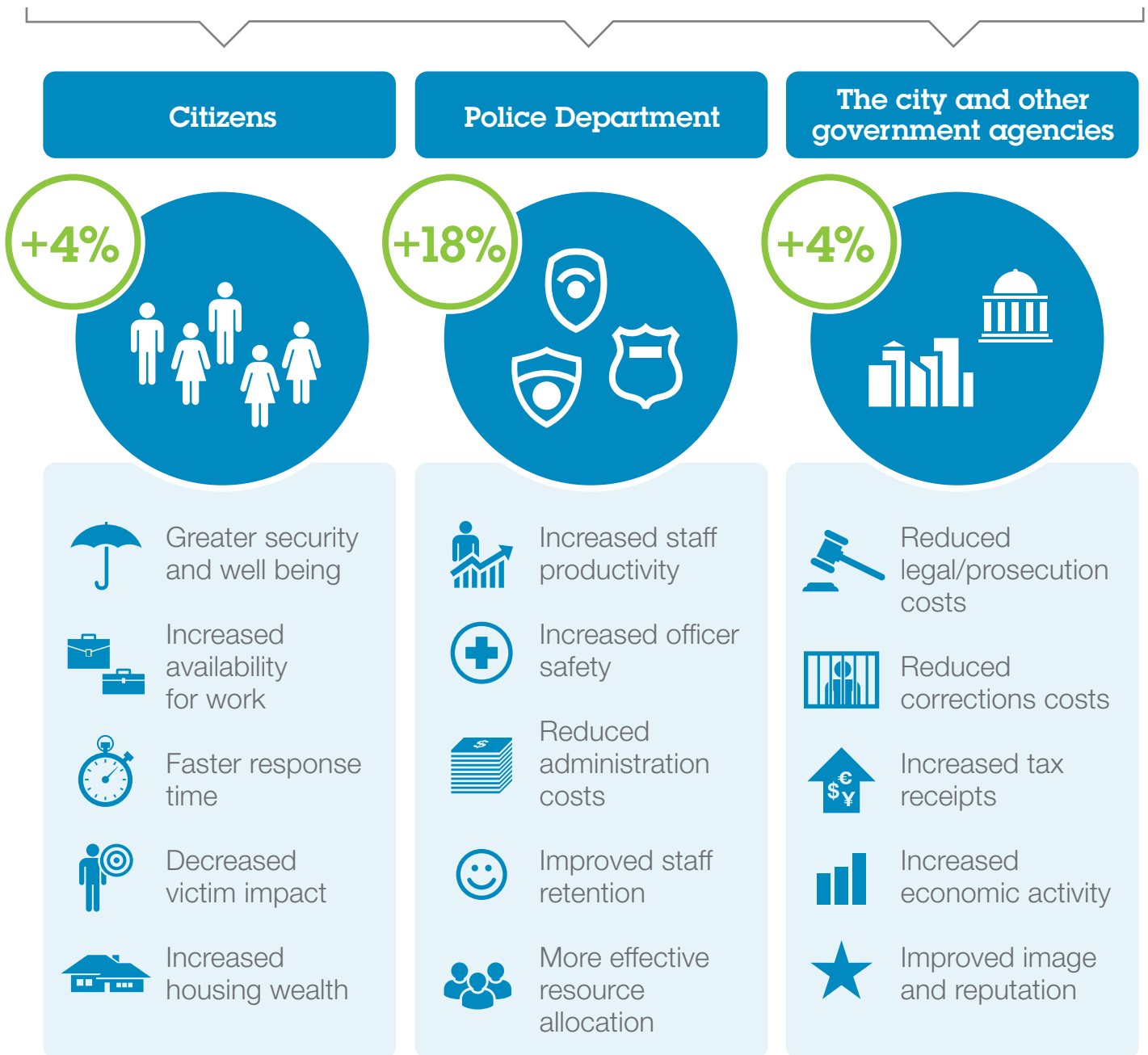
The nature of crime is evolving and resources are tight

Newer, smarter approaches are needed for law enforcement. These can be easy to deploy and are often about **making better use of existing capabilities** rather than implementing complex new systems.

Quantifying an intelligent approach to law enforcement



Delivering increased benefits to 3 major stakeholder groups



Translating into financial returns for cities of all sizes



Learn more about the benefits smarter public safety can bring including an estimate of benefits for your organization at ibm.com/smarter/government/publicsafety/value