

IBM i on Power - Performance FAQ

October 3, 2016

IBM Corporation

Table of Contents

1	Introduction	10
1.1	Purpose of this document	10
1.2	Overview	10
1.3	What's new in the latest version?	10
1.4	Document Responsibilities	10
2	What Is Performance?	11
2.1	Introduction	11
2.2	Performance	11
2.3	Response Time	11
2.4	Throughput	11
2.5	Throughput versus Response Time	11
2.6	Components of Response Time	12
2.6.1	Transaction Characteristics	13
2.6.2	IBM i Wait Buckets	14
2.6.3	HOLDERS and Waiters	15
2.6.4	Call Stacks	15
2.6.5	Collecting and Analyzing the Data	15
2.7	Acceptable Performance	16
3	Performance Benchmarks	17
3.1	Introduction	17
3.2	What Are Performance Benchmarks?	17
3.3	How are IBM i systems rated for performance?	17
3.4	What is the CPW rating of a system?	17
3.4.1	CPW Rating vs. Public Benchmarks	18
3.5	Comparing Benchmark Results	18
3.6	Custom Benchmarks and Proof of Concepts (PoC)	18
3.6.1	Considerations	19
3.6.2	Common Pitfalls for Custom Benchmarks	19
3.6.3	IBM i Performance & Scalability Services Center	19
4	Sizing a system	20
4.1	Introduction	20
4.2	System Sizing Tools	20
4.2.1	IBM Systems Workload Estimator (WLE)	20
4.2.2	IBM i Batch Model	22
5	Capacity Planning	25
5.1	IBM Performance Management for Power Systems	25
6	Proactive Performance Monitoring	26
6.1	Introduction	26
6.2	Performance monitoring before a problem occurs	26
6.2.1	Real-time Interactive Monitoring	26
6.2.2	Dashboard	26
6.2.3	Automated Monitoring	28
6.2.4	Watching for messages	30
6.3	Defining a Performance Problem (What is slow?)	31
6.4	Preparing Performance Data Collection	31
7	Performance Data Collectors and Analysis Tools	32

IBM Power Systems Performance

7.1	Introduction	32
7.2	Managing performance on IBM i	32
7.3	Performance Data Collectors	32
7.3.1	Collection Services	32
7.3.2	IBM i Disk Watcher	33
7.3.3	IBM i Job Watcher	34
7.3.4	Performance Explorer (PEX)	34
7.3.5	SQL Plan Cache	35
7.4	Analysis Tools	35
7.4.1	Overview	35
7.4.2	Performance Tools for i	36
7.4.3	IBM Navigator	36
7.4.4	Performance Data Investigator	38
7.4.5	IBM iDoctor for IBM i	41
7.4.6	Tools Matrix	42
8	Frequently Asked Questions	43
8.1	Introduction	43
8.2	General Questions	43
8.2.1	What are the general performance tuning recommendations for best IBM i performance?	43
8.2.2	I heard that... something on the internet said... should I change...?	43
8.2.3	My <CPU, disk, memory> usage is high, should I add more resource?	43
8.2.4	Why didn't the performance of my partition improve after I added <CPU, memory, disk arms, SSDs>?	43
8.2.5	Should I update PTFs before undertaking a performance analysis project?	43
8.2.6	How can I find out which jobs are consuming the most temporary storage on my partition?	44
8.2.7	There are two graphical interfaces for IBM i performance data – the Performance Data Investigator (PDI) and iDoctor. Which should I use?	45
8.3	CPU Questions	46
8.3.1	How can I reduce CPU usage on the partition?	46
8.3.2	What can I do if I can't reduce my CPU consumption?	46
8.3.3	How can I keep certain workloads from impacting my whole partition?	46
8.3.4	The performance of my system is inconsistent. What could cause that?	46
8.4	Memory Questions	47
8.4.1	How should I configure my partition's memory pools?	47
8.4.2	Should I turn on the Performance Adjuster (QPFRADJ)?	47
8.4.3	How can I tell what is in my partition's memory pools?	47
8.4.4	When should I add more memory to my partition?	47
8.4.5	What are the "Memory page fault guidelines"?	47
8.5	I/O Questions	47
8.5.1	What are some common disk subsystem configuration changes that can hurt performance?	48
8.5.2	How can I analyze I/O subsystem performance?	48
8.5.3	I can't modify my applications. What can I do to improve my I/O performance?	48
8.5.4	How do I virtualize IBM Serial-Attached SCSI (SAS) adapters for the best performance?	48
8.5.5	How can I tell if my applications will benefit from SSDs?	49

IBM Power Systems Performance

8.5.6	How many and what type of storage I/O products will meet performance requirements for an upgrade or new system or workload?	49
8.5.7	How can I tell if a FlashSystem solution is the best storage configuration for my environment?	49
8.5.8	How do I analyze I/O performance if I'm using external storage?	50
8.6	How do I tune IBM i database performance?	50
8.7	How do I tune journal and recovery performance?	51
8.8	How do I tune access path recovery performance?	51
8.9	How do I tune network performance?	52
8.10	How can I improve the performance of Java and/or WebSphere Application Server applications?	53
8.11	How do I tune RPG/COBOL application performance and native I/O file access?	53
8.12	Can security settings affect performance?	53
8.13	What are some inefficient application issues I can identify at a system level?	54
8.14	What is the largest number of cores that can be assigned to an IBM i partition?	55
8.15	How can I improve the scalability of my large IBM i partition?	55
8.16	Where can I find more information on performance tuning?	56
8.17	IBM Lab Services and Training	56
9	Database Performance	57
9.1	SQL Performance Tips	57
9.2	Improving the performance of programs that utilize native database access	57
9.3	Take advantage of performance improvements in DB2 for i	57
9.4	More information about the latest DB2 for i performance improvements	57
9.5	Leverage Database Performance Tools	58
9.6	More information on DB2 for i performance and support	62
10	RPG/COBOL and Native I/O	63
10.1	Introduction	63
10.2	CPU performance tips	63
10.2.1	Compiler Options	63
10.2.2	Profiling	63
10.3	IO performance tips	64
10.3.1	General tips	64
10.3.2	Database modernization	64
11	C Program Compiler Optimization	65
11.1	IBM i Architecture – MI Interface	65
11.2	IBM i Program Creation	67
11.3	Compiler option - OPTIMIZE	67
11.4	Program profiling	68
11.5	Advanced Argument Optimization	69
11.6	Interprocedural analysis (IPA)	69
12	Java and WebSphere	71
12.1	Introduction	71
12.2	Does it matter if I use the 32-bit versus 64-bit JVM?	71
12.3	I'm using an old JDK level and am behind on PTFs, is that okay?	71
12.4	How can I enable medium page size support?	71
12.5	Should I run my JVMs in a separate memory pool?	71
12.6	How do I determine the proper GC settings (heap sizes, collection policy, etc.) for my application?	71

IBM Power Systems Performance

12.7	How do I analyze JVM dumps and verbose GC output?	72
12.8	How do I tune Java code?	72
12.9	Where can I get more information on Java tuning and debugging?	72
12.10	Can I use Job Watcher to collect Java information?	72
12.11	How can I improve the performance of WebSphere Application Server running on IBM i?	72
12.12	How do I tune IBM Toolbox for Java performance?	72
12.13	Where can I find additional information?	72
13	POWER Systems	73
13.1	Introduction	73
13.2	Simultaneous Multithreading (SMT) and Intelligent Threads	73
13.2.1	Single thread (ST) versus SMT2/SMT4/SMT8	73
13.2.2	Intelligent Threads Technology	73
13.3	Flexible SMT Controls	74
13.3.1	Processor Compatibility Mode	74
13.3.2	QPRCMLTTSK System Value	75
13.3.3	QWCCHGPR API	76
13.4	POWER7 Memory Considerations	77
13.5	POWER7 TurboCore	77
13.6	Power Savings Mode	77
13.7	Adapter Placement	78
13.8	Affinitized Partitions	78
13.9	System Affinity Settings	78
13.10	IBM PowerVP Virtualization Performance	79
13.11	Collecting and Viewing Performance Data for Entire Physical System	80
13.12	POWER8 Redbooks	82
14	Virtualization	83
14.1	Virtualization Best Practices	83
14.2	Dynamic Platform Optimizer (DPO)	83
14.3	VIOS Advisor	83
14.4	iDoctor Power Connections – VIOS Investigator	84
15	Reporting a Performance Problem	85
15.1	Introduction	85
15.2	Define the Performance Problem	85
15.3	Questions that help IBM diagnose the problem	85
16	References	87
16.1	Education and Training	87
16.2	Redbooks and Redpapers	87
16.3	Additional Performance related information	88
16.4	Database Performance Articles	89
16.5	Key Performance Resources	90
16.6	Performance Capabilities Reference Note	90

Table of Figures

Figure 1 - Batch model	22
Figure 2 - Measured Resource Utilization	22
Figure 3 - Modeled Resource Utilization.....	23
Figure 4 - Batch Model Result.....	23
Figure 5 - IBM Navigator for i System Monitors	28
Figure 6 - Visualize Monitor Data	29
Figure 7 - Management Central GUI.....	30
Figure 8 - Collector data characteristics	35
Figure 9 - System i Navigator	37
Figure 10 - IBM Navigator for i Menu	38
Figure 11 - IBM Navigator for i	38
Figure 12 - Performance Data Investigator.....	39
Figure 13 - Performance Data Investigator example	40
Figure 14 - Graph History example	40
Figure 15 - iDoctor components	41
Figure 16 - iDoctor example	42
Figure 17 - Relationship between collector and major functions / interfaces.....	42
Figure 18 - Temporary Storage Used.....	44
Figure 19 - Network Link Aggregation	53
Figure 20 - Full Opens in iDoctor Collection Services Investigator	54
Figure 21 - Activation Groups Created in iDoctor Collection Services Investigator	55
Figure 22 - IBM i Architecture - MI Interface	66
Figure 23 - IBM i Program Creation.....	67
Figure 24 - Partition Placement	78
Figure 25 - PowerVP	79

Preface

This document is intended to address most frequently asked questions concerning IBM i performance on Power Systems, and provide best practice guidelines for most commonly seen performance issues.

The following is a list of key IBM® reference and documents. [The References section](#) contains additional references.

- The End to End Performance Management on IBM i Redbook provides a comprehensive set of performance tips and guidance with focus on monitoring and managing IBM i system performance:
[End to End Performance Management on IBM i Redbook](#)
- The POWER7 Virtualization Best Practice Guide, available on developerWorks, provides detailed best practices for POWER7 virtualization:
[POWER7 Virtualization Best Practice Guide](#)
- The Performance Optimization and Tuning Techniques for IBM Power Systems Processors Including IBM POWER8 Redbook provides performance information including specific tuning for POWER8.
[Perf Optimization & Tuning Techniques Including IBM POWER8 Redbook](#)
- IBM developerWorks provides a wide variety of information on topics for IBM i including performance:
<http://www.ibm.com/developerworks/ibmi/>
- You can also use the IBM developerWorks resource to provide information on IBM i performance tools topics:
[developerWorks - Performance Tools](#)

Acknowledgements

We would like to thank the many people who made invaluable contributions to this document. Contributions included authoring, insights, ideas, reviews, critiques and reference documents

Our special thanks to key contributors from IBM STG Power Systems Performance:

- Clark Anderson – I/O Performance
- Allan Johnson – IBM i Performance
- Dirk Michel – Linux Performance
- Rick Peterson – IBM i Performance

Our special thanks to key contributors from IBM i Development Support:

- Scott Forstie – IBM i Development
- Chris Francois – IBM i Development
- Lora Powell – IBM i Development
- Shauna Rollings – IBM i Development

Our special thanks to key contributors from IBM Server Technical Sales:

- Sue Baker - Power Systems Strategic Initiatives

Our special thanks to key contributors from IBM i Global Support Center:

- Brad Menges – IBM i Performance

Our special thanks to key contributors from [IBM Lab Services Power Systems Delivery Practice](#):

- Eric Barsness – IBM i Performance
- Stacy Benfield – IBM i Performance
- Terry Ford – IBM i Security
- Dawn May – IBM i Performance
- Cindy Mestad – PaSS Center
- Gottfried Schimunek – IBM i Performance

Disclaimer – Performance FAQ

Copyright © 2016 by International Business Machines Corporation.

No part of this document may be reproduced or transmitted in any form without written permission from IBM Corporation.

Product data has been reviewed for accuracy as of the date of initial publication. Product data is subject to change without notice. This information may include technical inaccuracies or typographical errors. IBM may make improvements and/or changes in the product(s) and/or programs(s) at any time without notice. References in this document to IBM products, programs, or services does not imply that IBM intends to make such products, programs or services available in all countries in which IBM operates or does business.

THE INFORMATION PROVIDED IN THIS DOCUMENT IS DISTRIBUTED "AS IS"

WITHOUT ANY WARRANTY, EITHER EXPRESS OR IMPLIED. IBM EXPRESSLY

DISCLAIMS ANY WARRANTIES OF MERCHANTABILITY, FITNESS FOR A PARTICULAR PURPOSE OR NON-INFRINGEMENT. IBM shall have no responsibility to update this information. IBM products are warranted according to the terms and conditions of the agreements (e.g., IBM Customer Agreement, Statement of Limited Warranty, International Program License Agreement, etc.) under which they are provided. IBM is not responsible for the performance or interoperability of any non-IBM products discussed herein.

The performance data contained herein was obtained in a controlled, isolated environment. Actual results that may be obtained in other operating environments may vary significantly. While IBM has reviewed each item for accuracy in a specific situation, there is no guarantee that the same or similar results will be obtained elsewhere.

Statements regarding IBM's future direction and intent are subject to change or withdrawal without notice, and represent goals and objectives only.

The provision of the information contained herein is not intended to, and does not, grant any right or license under any IBM patents or copyrights. Inquiries regarding patent or copyright licenses should be made, in writing, to:

IBM Director of Licensing
IBM Corporation
North Castle Drive
Armonk, NY 10504-1785
U.S.A.

1 Introduction

1.1 Purpose of this document

The purpose of this document is to provide a basic understanding of IBM i on Power Systems performance concepts, workloads and benchmarks on Power Systems, capacity planning, performance monitoring and analysis, frequently asked questions and guidelines addressing common performance issues.

This document is not intended to replace performance management documentation or performance white papers.

1.2 Overview

This document covers a variety of Power Systems performance including:

- What Is Performance?
- Performance Benchmarks
- Sizing a System and Capacity Planning
- Performance Tools
- Performance Analysis and Tuning
- Frequently Asked Questions
- POWER8 and Virtualization Performance
- Reporting a Performance Problem

1.3 What's new in the latest version?

Several new sections were added or changed in this version:

1. Updates to Chapter 6 including new Dashboard function (6.2.2)
2. Best practices added to Chapter 6 and 7
3. Updates to Chapter 8 including a new section on external disk I/O (8.5.8)
4. General link updates

1.4 Document Responsibilities

The IBM STG Power Systems Performance organization is responsible for editing and maintaining the IBM i on Power - Performance FAQ document. Any contributions or suggestions for additions or edits should be forwarded to Dawn May, dmmay@us.ibm.com.

2 What Is Performance?

2.1 Introduction

The purpose of this chapter is to explain what exactly computer performance is.

2.2 Performance

Computer performance is largely determined by a combination of response time and throughput. Other aspects associated with computer performance are availability of computer systems and their power efficiency.

2.3 Response Time

The response time of a computer system is the elapsed time between the end of a transaction inquiry or demand and the beginning of a response to that transaction. For interactive users, the response time is the time from when the user hits the <enter> button to seeing the result displayed. The response time often is seen as a critical aspect of performance because of its potential visibility to end users or customers.

Let's take the example of a computer system that is running a web server with an online store. The response time here is the elapsed time between pressing the submit button to place an order and the beginning of receiving the order confirmation.

2.4 Throughput

The throughput of a computer system is a measure of the amount of work performed by a computer system over the period of time. Examples for throughput are megabytes per second read from a disk, database transactions per minute, megabytes transmitted per second through a network adapter.

Let's go back to the previous example with the online store. The computer system on which the online store is running might be one out of many computers that are all connected to the same database server. While response time of the database server is an important factor, its throughput may be more important because it processes many requests from the web servers in parallel.

2.5 Throughput versus Response Time

Throughput and response time are related. As system resources (processors, memory, disk, etc.) are used by multiple, simultaneous transactions, there may be delays to individual transactions due to the fact that other transactions are using those particular resources when they are demanded and the request for processing is temporarily delayed. System resources that are shared can cause transactions that rely on these resources to incur a response time increase due to this queuing.

However, POWER systems are designed for high performance sharing. As transaction load increases on the system, throughput increases. It follows that, as resource queuing increases, response time will increase too. Therefore, high throughput may come at the cost of slower response times.

Let's assume you load a truck with 10,000 1TB disks, drive the truck 30 miles and unload the disks within one hour. The throughput would be 2.8TB per second but at the cost of the response time which would be an hour.

Now take a sports car instead of a truck. It's unlikely that 10,000 disks would fit into a small car, so let's assume we can load 100 1TB disks, drive the sports car 30 miles and

IBM Power Systems Performance

unload the disks within 20 minutes. The response time now is three times better compared to the truck, however, the throughput reduced to 0.083TB per second.

2.6 Components of Response Time

Wait Accounting is the patented technology built into the IBM® i operating system that tells you what a thread or task is doing when it appears that it is not doing anything.

When a thread or task is not executing, it is waiting. Wait accounting, a concept exclusive to IBM i, is a very powerful capability for detailed performance analysis. The following information is going to focus on waiting, why threads wait, and how you can use wait accounting to troubleshoot performance problems or to simply improve the performance of your applications.

A job is the basic mechanism through which work is done. Every job has at least one thread and may have multiple threads. Every thread is represented by a licensed internal code (LIC) task, but tasks also exist without the IBM i thread-level structures. LIC tasks are generally not visible externally except through the IBM i Performance or Service Tools. Wait accounting concepts apply to both threads and tasks, thus, the terms thread and task are used when referring to an executable piece of work.

A thread or task has two basic states it can be in:

- Executing on the processor. This is the "running" state.
- Waiting

There are three key wait conditions:

- Ready to run, waiting for the processor. This is a special wait state and is generally referred to as "*CPU Queuing*." This means the thread or task is queued and is waiting to run on the CPU. There are a few different reasons that CPU queuing can occur. An example could be if the partition is overloaded and there is more work than the partition can accommodate, then work can be queued to wait for the CPU. This can be compared to a highway that has ramp meters; when the highway is congested, the ramp meters have a red signal so that the cars have to stop and wait before they can enter traffic. Logical partitioning and simultaneous multithreading can also result in CPU queuing.
- Idle waits. Idle waits are a normal and expected wait condition. Idle waits occur when the thread is waiting for external input. This input may come from a user, the network, or another application. Until that input is received, there is no work to be done.
- Blocked waits. Blocked waits are a result of serialization mechanisms to synchronize access to shared resources. Blocked waits may be normal and expected. Examples include serialized access to updating a row in a table, disk I/O operations, or communications I/O operations. However, blocked waits may not be normal and it is these unexpected block points that are situations where wait accounting can be used to analyze the wait conditions.

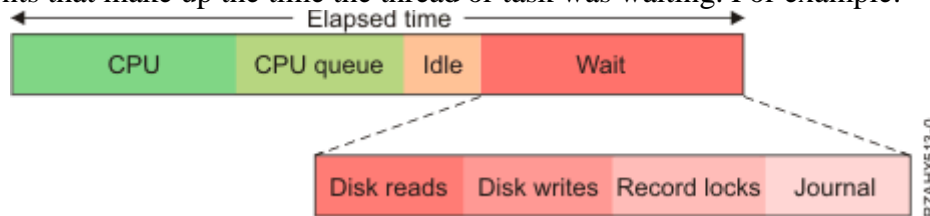
You can think of the life-time of a thread or a task in a graphical manner, breaking out the time spent running or waiting. This graphical description is called the "run-wait time signature". At a high level, this signature looks as follows (each of the colored segments represents a certain amount of cumulative time the job spent in that wait group during its run-time):

IBM Power Systems Performance



Traditionally, the focus for improving the performance of an application was to have it use the CPU as efficiently as possible. On IBM i with wait accounting, we can examine the time spent waiting and understand what contributed to that wait time. If there are elements of waiting that can be reduced or eliminated, then the overall performance can also be improved.

Nearly all of the wait conditions in the IBM i operating system have been identified and enumerated - that is, each unique wait point is assigned a numerical value. This is possible because IBM has complete control over both the licensed internal code and the operating system. As of the IBM i 6.1 and 7.1 releases, there are 268 unique wait conditions. Keeping track of over 250 unique wait conditions for every thread and task would consume too much storage, so a grouping approach has been used. Each unique wait condition is assigned to one of 32 groups, or "buckets". As threads or tasks go into and out of wait conditions, the task dispatcher maps the wait condition to the appropriate group. If we take the run-wait time signature, using wait accounting, we can now identify the components that make up the time the thread or task was waiting. For example:



If the thread's wait time was due to reading and writing data to disk, locking records for serialized access, and journaling the data, we could see the waits broken out above. When you understand the types of waits that are involved, you can start to ask yourself some questions. For the example above, some of the questions that could be asked are:

- Are disk reads causing page faults? If so, are my pool sizes appropriate?
- What programs are causing the disk reads and writes? Is there unnecessary I/O that can be reduced or eliminated? Or can the I/O be done asynchronously?
- Is my record locking strategy optimal? Or am I locking records unnecessarily?
- What files are being journaled? Are all the journals required and optimally configured?

2.6.1 *Transaction Characteristics*

Transactions that consist of a mix of considerable disk wait times are called **I/O-limited transactions**. These transactions gain the most benefit from an efficient disk I/O subsystem. High speed disks, large disk cache, and high speed I/O links can improve the response time and throughput of these types of transactions. Also, consider SSDs as an alternative to HDDs for this type of transactions. See [I/O Questions](#) for more tips for improving I/O performance.

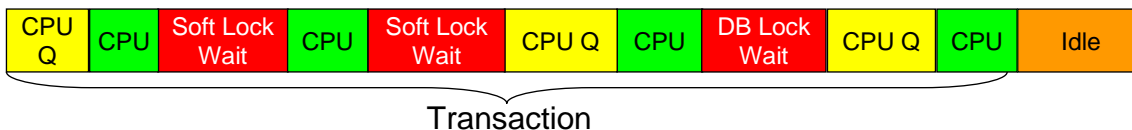
I/O-limited Transaction:



IBM Power Systems Performance

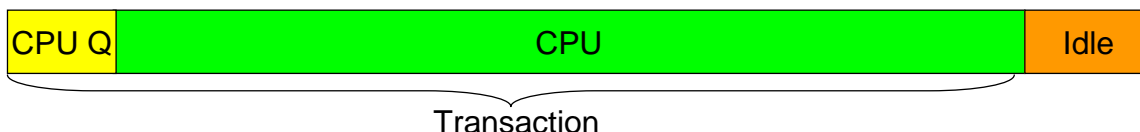
resources-limited transactions. These transactions tend to benefit most from improving application efficiency. Reduce the impact of critical shared resources between applications or program threads. Job Watcher, and IBM performance data collector tool, can be used to help determine the critical resources and waiters. Use Performance Data Investigator or IBM iDoctor to analyze the data.

Soft resources-limited Transaction:



Transactions that consume considerable processor cycles and very little I/O or wait times are called **processor-bound transactions**. These transactions tend to benefit most from higher processor frequency and the efficiency of the processor pipeline stages. They may also benefit from [improved processor and memory nodal affinity](#) and from improved partition placement (e.g. [Dynamic Platform Optimizer “DPO”](#)).

Processor-bound transaction:



2.6.2 *IBM i Wait Buckets*

The following 32 wait groups or "buckets" are defined for the IBM i 7.2 release. The definition of the wait groups varies from release to release and may change in the future.

1. Time dispatched on a CPU
2. CPU queuing
3. Reserved
4. Other waits
5. Disk page faults
6. Disk non-fault reads
7. Disk space usage contention
8. Disk operation start contention
9. Disk writes
10. Disk other
11. Journaling
12. Semaphore contention
13. Mutex contention
14. Machine level gate serialization
15. Seize contention
16. Database record lock contention
17. Object lock contention
18. Ineligible waits
19. Main storage pool contention
20. Journal save while active (IBM i 7.2)

IBM Power Systems Performance

21. Reserved
22. Reserved
23. Reserved
24. Socket transmits
25. Socket receives
26. Socket other
27. IFS
28. PASE
29. Data queue receives
30. Idle/waiting for work
31. Synchronization Token contention
32. Abnormal contention

There are many of these wait groups that you may see surface if you do wait analysis on your application. Understanding what your application is doing and why it is waiting in those situations can possibly help you reduce or eliminate unnecessary waits.

For more information on these wait groups refer to these Job Waits Whitepapers:

[Job Waits Whitepaper](#)

or

[IBM i Wait Accounting](#)

2.6.3 *Holders and Waiters*

Not only does IBM i keep track of what resource a thread or task is waiting on, it also keeps track of the thread or task that has the resource allocated to it. This is a very powerful feature. A "holder" is the thread or task that is using the serialized resource. A "waiter" is the thread or task that wants access to that serialized resource.

2.6.4 *Call Stacks*

IBM i also manages call stacks for every thread or task. This is independent of the wait accounting information. The call stack shows the programs that have been invoked and can be very useful in understanding the wait condition, such as knowing some of the logic that led up to either holding a resource or wanting to get access to it. The combination of holder, waiter, and call stacks provide a very powerful capability to analyze wait conditions. Beginning with IBM i 7.3, PASE stack frames will now be collected and reported in Job Watcher when the data collection option to include *CALLSTACK data is specified.

2.6.5 *Collecting and Analyzing the Data*

Collection Services and Job Watcher are two performance data collection mechanisms on IBM i that collect the wait accounting information. Job Watcher also collects holder and waiter information, as well as call stacks. Once the performance data has been collected, you can graphically analyze the data. The iDoctor product has a Windows® client for graphically viewing performance data. And in IBM i 6.1 and later releases, IBM Navigator for i (previously known as IBM Systems Director Navigator for i) web console has the Performance Data Investigator feature to graphically view performance data through a web browser interface.

2.7 Acceptable Performance

It is best to evaluate performance of a system through objective measurements, for example through application log files, or batch job run times.

Acceptable performance is based on customer expectations. Expectations can be based on benchmarks, modeling, or experience. But if the actual users of the system feel that the response time or throughput is unacceptable, this is a key indication of a problem.

Incorrect assumptions when architecting a system may create a situation where acceptable performance cannot be attained.

3 Performance Benchmarks

3.1 Introduction

This chapter covers the performance benchmarks and how they should be used to compare system performance.

3.2 What Are Performance Benchmarks?

Performance benchmarks are well defined tests that serve as a basis to evaluate and compare the performance of computer systems. Performance benchmark tests use representative sets of programs and data designed to evaluate the performance of computer hardware and software in a given configuration.

3.3 How are IBM i systems rated for performance?

IBM publishes Commercial Processing Workload (CPW) ratings for all IBM i systems to help customers compare the relative throughput capacity of systems.

3.4 What is the CPW rating of a system?

The CPW rating of a system is generated using measurements of a specific workload that is maintained internally within the IBM i Systems Performance group. The CPW rating is designed to evaluate a computer system and associated software in the commercial environment. It is rigidly defined as a relative capacity metric for rough model comparisons and relative CPU consumption. It is NOT representative of any specific environment, but it is generally applicable to the commercial computing environment.

- What the CPW rating is:
 - Test of a range of database applications, including various complexity updates and various complexity queries with commitment control and journaling
 - Test of concurrent data access by users running a single group of programs.
 - Reasonable approximation of a steady-state, database oriented commercial application's relative performance.
- What the CPW rating is not:
 - An indication of the performance capabilities of a system for any specific customer situation
 - A test of "ad-hoc" (query) database performance
 - A test of single-threaded (batch) application throughput (e.g. batch processing steps per minute)
 - A test of single-threaded (batch) application run time or "batch window" (e.g. job completes in 4 hour batch window)
- When to use the CPW rating results:
 - Approximate product positioning between different systems running IBM i where the primary application is expected to be oriented to traditional commercial business uses (order entry, payroll, billing, etc.).
 - The CPW metric should be used in terms of the system capacity potential (throughput) and not in terms of response time of a transaction, batch job, or query.

IBM Power Systems Performance

3.4.1 *CPW Rating vs. Public Benchmarks*

Specific choices were made in creating the CPW rating to try to best represent the relative positioning of IBM i systems. Some of the differences between the CPW rating and public benchmarks are:

- The code base for public benchmarks is constantly changing to try to obtain the best possible results, while an attempt is made to keep the base for the CPW rating as constant as possible to better represent relative improvements from release to release and system to system.
- Public benchmarks typically do not require full security, but since IBM customers tend to run on secure systems, Security Level 50 is specified for the CPW rating.
- Public benchmarks are optimized to obtain the best possible results for that specific benchmark, whereas for the CPW rating we tend to use more of the system defaults to better represent the way the system is shipped to our customers.
- Public benchmarks can use different applications for different sized systems and take advantage of all of the resources available on a particular system, while the CPW rating has been designed to run as the same application at all levels with approximately the same disk and memory resources per simulated user on all systems
- Public benchmarks require extensive, sophisticated driver and middle tier configurations. In order to simplify the environment and add a small computational component into the workload, all the required components to drive the CPW rating have been included as a part of the overall workload.

The net result is that the CPW rating is an application model that IBM believes provides an excellent indicator of multi-user transaction processing performance capacity when comparing between members of the IBM i system families. As indicated above, the CPW rating is not intended to be a guarantee of performance, but can be viewed as a good indicator for multi-user transaction processing workloads

3.5 Comparing Benchmark Results

When comparing performance benchmark results it is important to compare “apples-to-apples” by comparing the results of the same performance benchmark test(s). The result of one benchmark test often does not represent the performance of a computer system for another workload.

For example, the result of a floating point intensive benchmark test doesn't provide any information about the performance of the same computer running an integer intensive benchmark or an OLTP workload and vice versa.

A common pitfall in setting the wrong performance expectations is to look at the results of one performance benchmark and apply it to another workload. For example, if the performance of an OLTP workload improved by 50% when upgrading from Machine A to Machine B, it would be invalid to assume that a Compute Intensive workload would see the same improvement. Likewise, it would be invalid to assume that a single threaded workload improvement would necessarily translate into the same OLTP workload improvement.

3.6 Custom Benchmarks and Proof of Concepts (PoC)

Custom benchmarks are often used when a customer needs to confirm the sizing requirements of a specific application on specific hardware configurations. This may be the case when sizing tools do not provide the level of confidence needed to make purchase decisions. Many times this involves testing application scalability on multiple hardware

IBM Power Systems Performance

configurations.

Custom benchmarks can range in complexity. They can be as simple as a test of end-of-day batch processing, or as complex as simulating thousands of online users accessing a multi-tiered web application.

When a custom benchmark is performed to measure the performance of a computer system for a customer production workload it is important that the benchmark test represents the real workload to get meaningful data.

For example, running a single database job at a time on an otherwise idle database server provides good information about the performance of the database server under best possible conditions. However, it does not provide any information about the performance of this database job when the server is under medium or heavy production workload.

3.6.1 *Considerations*

When doing a custom benchmark or Proof of Concept (PoC) it is important that the test be constructed to simulate the production environment. This is especially true as the hardware continues to evolve into the multi-core era and more time is being invested in the cache/memory hierarchy.

3.6.2 *Common Pitfalls for Custom Benchmarks*

The most common pitfall when running a custom benchmark or a proof of concept is that the benchmark test does not simulate the real production environment and the benchmark result does not represent the performance the system will achieve in the production environment. The achieved benchmark result might be much better for the benchmark test than for the real production workload which most likely would lead to performance problems later on when running the real workload. It also could be the other way around potentially causing delays or failure of the PoC.

3.6.3 *IBM i Performance & Scalability Services Center*

The IBM i Performance & Scalability Services Center in Rochester, MN can provide facilities, hardware and technical expertise to assist you with a custom benchmark or Proof of Concept.

Following are some examples of the types of testing that is done at the Performance & Scalability Services Center:

- Proofs of Concept (e.g. HA alternatives, SSD analysis, external storage, etc.)
- Stress test specific hardware configuration
- Evaluate application scalability
- Performance optimization and tuning
- Assess application performance when migrating to a new release of IBM i
- Determine impact of application changes
- Virtualization, consolidation, migration services
- Capacity planning

To request a custom benchmark or Proof of Concept, submit a request using the following link:

<http://www.ibm.com/systems/services/labservices/psscontact.html>

4 Sizing a system

4.1 Introduction

Sizing a system, and all its various components, so that it is capable of adequately supporting a production environment can be quite complex. It requires a good knowledge of the characteristics of the workload(s) to be run, and the load that they will place on the system components.

Some questions to consider before beginning the sizing exercise:

1. What are the primary metrics, e.g., throughput, latency, that will be used to validate that the system is meeting performance requirements?
2. Does the workload run at a fairly steady state, or is it bursty, thereby causing spikes in load on certain system components? Are there specific criteria, e.g., maximum response time that must be met during the peak loads?
3. What are the average and maximum loads that need to be supported on the various system components, e.g., CPU, memory, network, storage?

4.2 System Sizing Tools

4.2.1 *IBM Systems Workload Estimator (WLE)*

The IBM Systems Workload Estimator (WLE) is a web-based sizing tool for IBM Power Systems and IBM z Systems. WLE is available at:

<http://www.ibm.com/systems/support/tools/estimator/>.

You can use this tool to size a new system, to size an upgrade to an existing system, or to size a consolidation of several systems. WLE will characterize your projected workload either with customer measurement data or by using one of the many workload plug-ins (a.k.a., sizing guides). Virtualization can be reflected in the sizing to yield a more robust solution by using various types of partitioning and virtual I/O. WLE will provide current and growth recommendations for processor, memory, and disk (either internal or SAN) that satisfy the overall customer performance requirements.

WLE can support sizings dealing with multiple systems, multiple partitions, multiple operating systems, and multiple sizing intervals. These features can be coordinated by using the functions on the Workload Selection screen.

WLE will recommend the system model, processor, memory, and disk requirements that are necessary to handle the overall workload with reasonable performance expectations. To use WLE, you select one or more workloads and answer a few questions about each workload. Based on the answers, WLE generates a recommendation and shows the predicted CPU utilization of the recommended system in graphical format. The results can be viewed and saved as a PDF. The visualize solution function can be used to better understand the recommendation in terms of time intervals and virtualization. For many systems, WLE can also provide an energy consumption estimate to help with your "go green" initiatives. There is an optional integration point with planning tools (System Planning Tool, and the IBM Pre-sales Advisor Tool) so that the configuration planning and validation may continue.

The WLE recommendation is based on processing capacity, which assumes that the system

IBM Power Systems Performance

can handle the aggregate transaction rate and that the application can fully scale on the system. Although WLE does not model response times specifically, it abides by the best practice utilization guidelines to help minimize potential negative impacts to response time. Beyond what is recommended here, additional system resources may be required for additional workloads not sized here, growth resulting from workload changes, version/release changes not already considered, minimum memory to support I/O or virtualization configurations, minimum disk to support multiple ASP or RAID configurations, and all other resources beyond the scope of WLE (CPU, memory, disk).

The WLE recommendation assumes that your system is well-tuned in terms of performance (including the system hardware configuration, operating system settings, virtualization configuration and settings, and the application). The WLE scaling algorithms assume that the sized applications are multi-thread capable and are able to exploit and scale with multiple cores and SMT; otherwise, the sizing is invalid. So, do not use WLE to size single-threaded applications or for single-threaded time critical batch jobs. For these, it is important to also consider the performance per thread and per core, as well as GHz.

Sizing tool input starts with well-defined, realistic, consistent workloads and not with industry benchmarks (that many times avoid customer-like functions like logging and random non-cached accesses). WLE workload requirements come from performance data from existing customer systems or from WLE workload plug-ins. In the case of existing systems, it is important to consider peak data to fully support your business along with a growth trend. For plug-ins, it is important to answer the questionnaires with responses to adequately cover your peak requirements.

As with every performance estimate (whether a rule of thumb or a sophisticated model), you always need to treat it as an estimate. This is particularly true with a robust IBM Systems that offer so many different capabilities where each installation will have unique performance characteristics and demands. The typical disclaimers that go with any performance estimate ("your experience might vary...") are especially true. We provide these sizing estimates as general guidelines, but can't guarantee their accuracy in all circumstances.

You are able to transfer Collection Services data from your existing system for sizing using Performance Data Investigator (PDI), iDoctor, or PM for Power Systems. PDI and iDoctor allow you to select a specific interval, launch WLE on the web, and push that data into a sizing session. PM is more robust as it additionally provides a set of weekly peak usage points that can be used with WLE to determine resource requirements including trends and growth rates.

4.2.1.1 How can I get the IBM Workload Estimator?

IBM Workload Estimator can be found at:

[Estimator](#)

4.2.1.2 How can I get assistance in sizing a system?

Please utilize the IBM Workload Estimator or contact your IBM Business Partner.

[Workload Estimator Community](#)

IBM Power Systems Performance

4.2.2 IBM i Batch Model

Batch model was introduced in IBM i 7.2. The purpose of this new function is to help you analyze batch job performance characteristics as well as predict batch workload run times after changes are made to disk, processor, or workload volumes. This new function is found in IBM Navigator for i under the Performance category and uses Collection Services data as input.

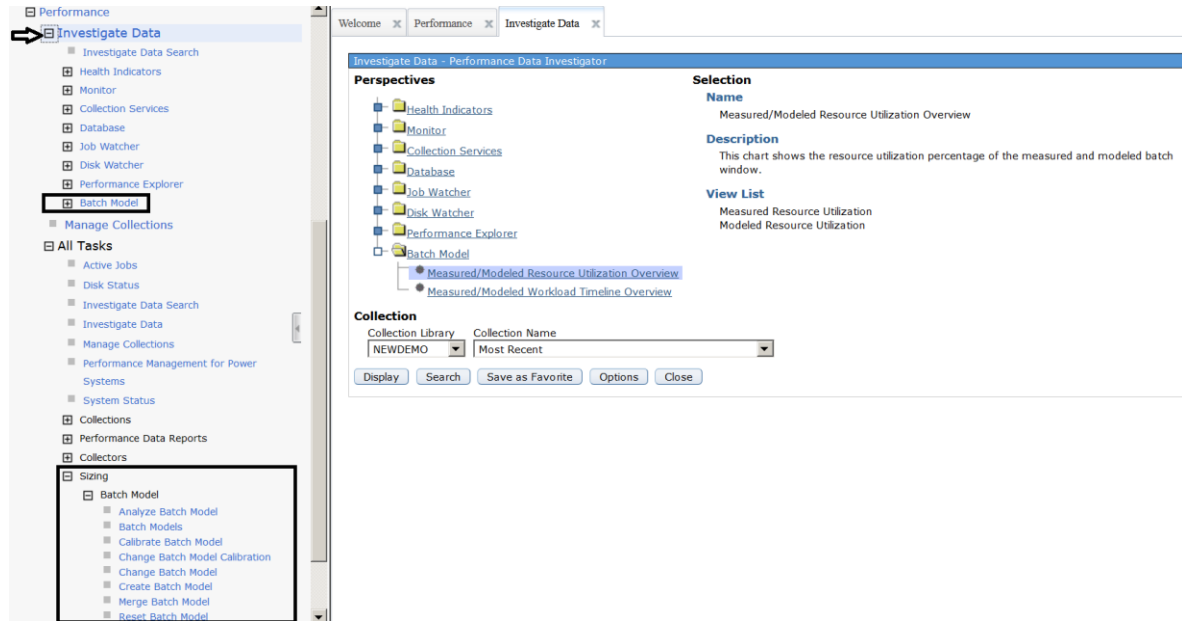


Figure 1 - Batch model

The following is example output containing current (measured) utilizations followed by predicted (modeled) results after hardware configuration changes were made:

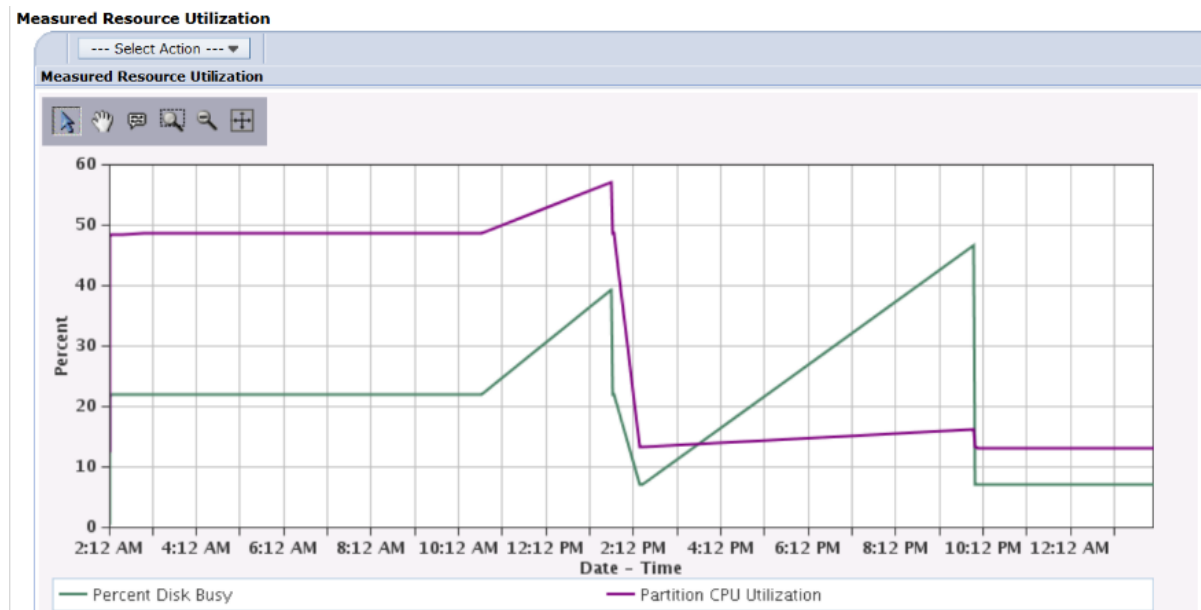


Figure 2 - Measured Resource Utilization

IBM Power Systems Performance

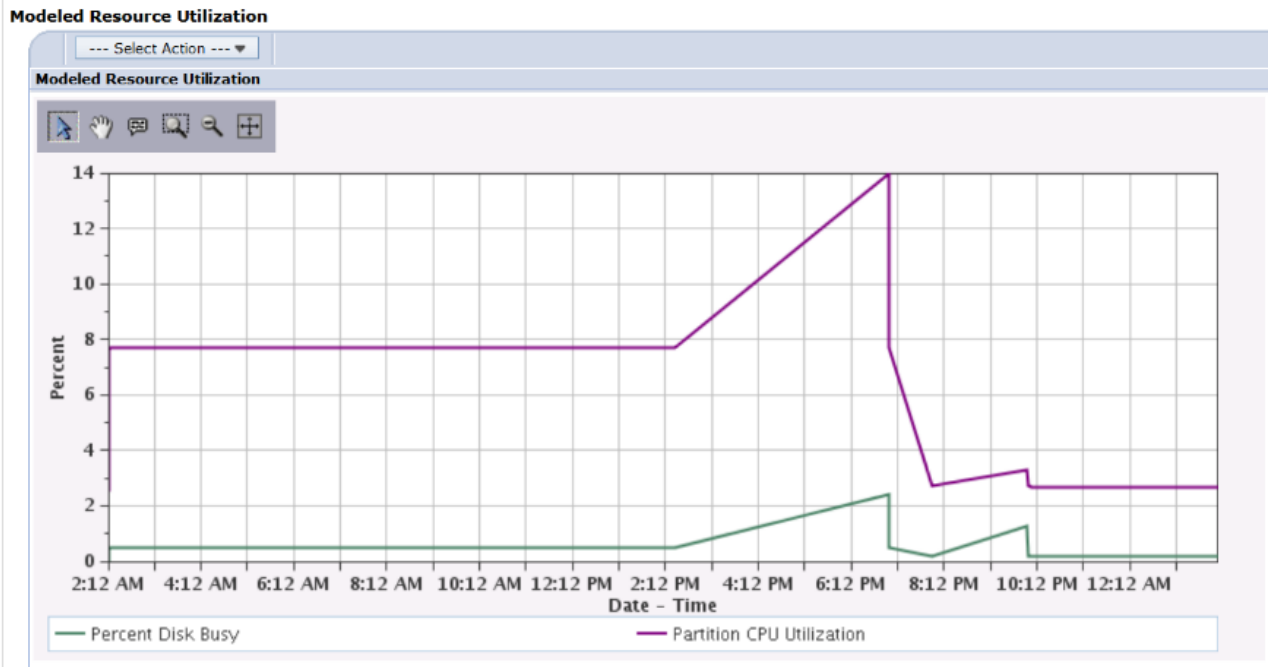


Figure 3 - Modeled Resource Utilization

The results of Batch Model can also be used to understand the activity during both the measured and modeled batch workload timeline, such as start/stop times, dependencies, and characteristics of resources used and wait times:

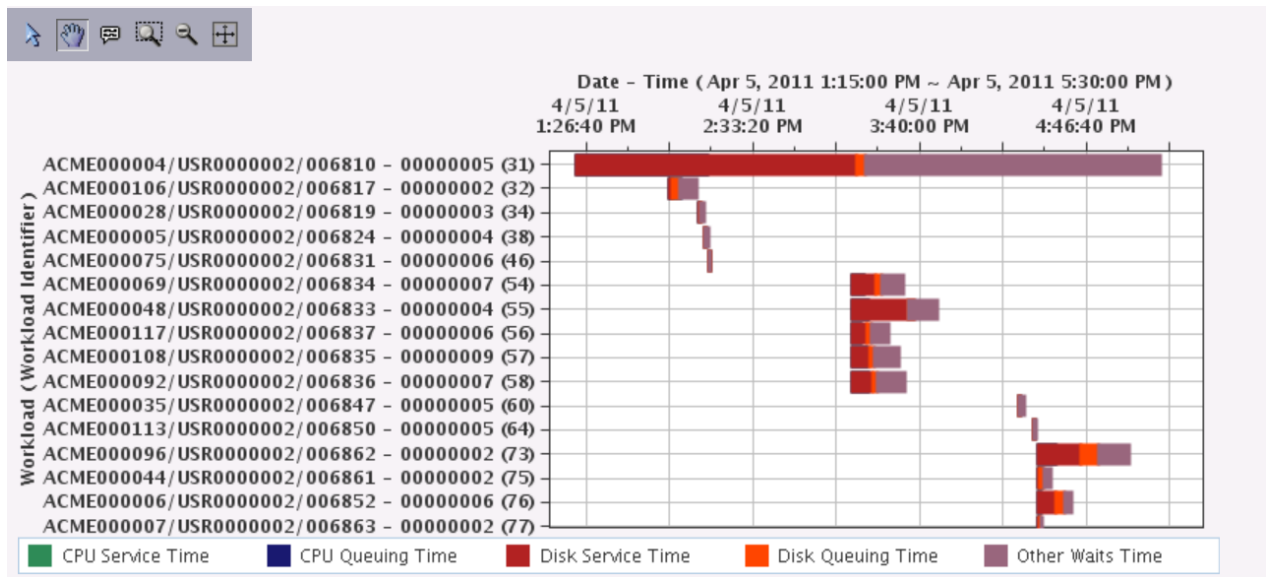


Figure 4 - Batch Model Result

To use Batch Model, you must have the Manager feature (option 1) of the Performance Tools Licensed Program Product (5770PT1) installed. You do need to have a 7.2 partition in order to access the Batch Model function in IBM Navigator for i. However, you can use Batch Model on Collection Services data from the 6.1 or 7.1 releases – by moving this data to the 7.2 partition.

Add SI54715 and SI54462 for POWER8 systems support in the Batch Model. After

IBM Power Systems Performance

applying the PTFs, you need to restart the HTTP server to activate the function of P8 support:

```
ENDSBS  SBS(QHTTPSVR)  OPTION(*IMMED)
STRTCPSVR SERVER(*HTTP) HTTPSVR(*ADMIN)
```

For information about PTFs that are required for Batch model:

[Batch Model Enhancements](#)

Additional usage information can be found here:

[developerWorks - How to use the Batch Model](#)

[IBM Knowledge Center - Batch Model](#)

5 Capacity Planning

5.1 IBM Performance Management for Power Systems

The IBM® Performance Management for Power Systems™ (PM for Power Systems) in support of IBM i offering automates the collection, archival, and analysis of system performance data and returns reports to help you manage system resources and capacity.

The PM for Power Systems offering includes the Performance Management Agent (PM Agent). The PM Agent is a function of the operating system that provides automated collection of nonproprietary Collection Services data, reduces the data, and sends the data to IBM. When you send your data to IBM, you eliminate the need to store all the trending data yourself. IBM stores the data for you and provides you with a series of reports and graphs that show your server's growth and performance. You can access your reports electronically using a traditional browser.

This offering, when used with the IBM Systems Workload Estimator, allows you to better understand how your business trends relate to the timing of required hardware upgrades, such as central processing unit (CPU) or disk. The IBM Systems Workload Estimator can size a systems consolidation or evaluate upgrading a system with logical partitions, by having PM Agent send the data for multiple systems or partitions to the IBM Systems Workload Estimator.

PM for Power Systems is available in both 'no additional charge' and 'nominal charge' options depending on the level of detail you wish to see on a routine basis.

The PM Agent is a part of the operating system and you must activate it to use its collecting capabilities. You must start PM Agent to take advantage of its data collecting capabilities:

[Activating PM Agent](#)

For additional information:

[PM for Power Systems](#)

and

[IBM Performance Management for Power Systems - support for IBM i](#)

6 Proactive Performance Monitoring

6.1 Introduction

This chapter covers proactive performance monitoring process from a high level point of view. Its purpose is to provide a guideline and best practice on how to address performance problems using a top down approach.

6.2 Performance monitoring before a problem occurs

Application performance should be recorded using log files, batch run times or other objective measurements. General system performance should be recorded, and should include as many components of the environment as possible.

Performance statistics should be collected based on the typical period of activity in your environment. The minimum period should be considered one week in an interactive system, as typical performance may vary based upon the day of the week. A batch processing system that typically runs large end of month reports should consider a month as the minimum period. Data should be collected and stored over multiple periods to allow for comparison.

Performance monitoring of the environment provides many benefits. The application performance will provide a useful method of quantifying the performance change. A history of acceptable system performance will focus analysis on changed components. Also, continual review of performance monitoring will show trends in performance and capacity before they become system wide problems.

6.2.1 *Real-time Interactive Monitoring*

Basic system commands provide a real-time view of data and can help you identify potential problems early. The most common are:

WRKACTJOB -- shows all jobs with key system resources used (including CPU %, response time, and I/O information and, in IBM i 7.2, the temporary storage used by each job.)

WRKSYSSTS -- shows system utilization and pool usage

WRKDSKSTS -- shows statistics for all disk units

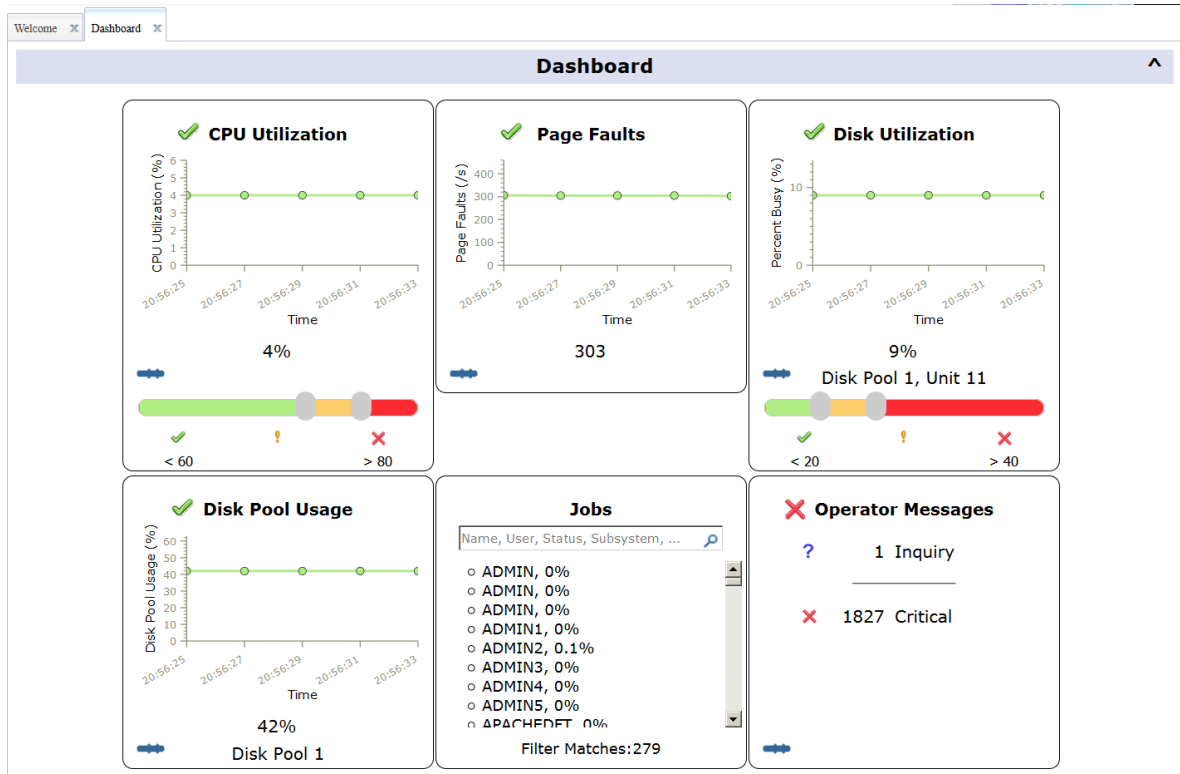
WRKSYSACT -- shows tasks, primary threads and secondary threads that have consumed CPU in the refresh period. Also shows temporary storage used.

Equivalent GUI versions of these commands are available in System i Navigator and IBM Navigator for i.

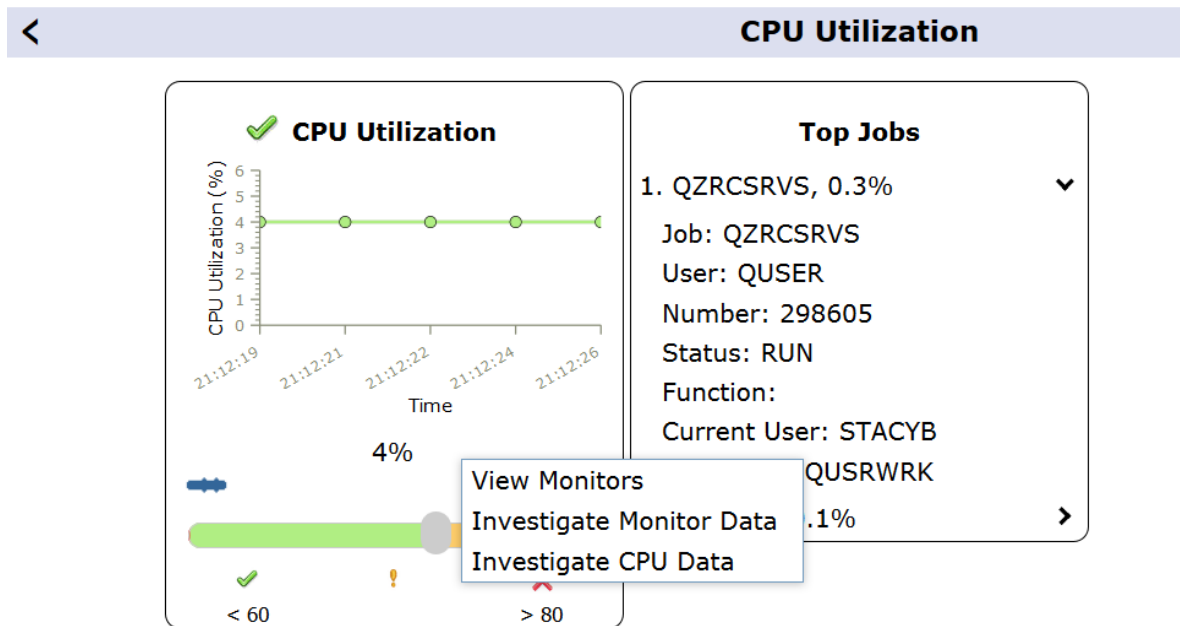
6.2.2 *Dashboard*

Dashboard is a new way in 7.3 to get a quick, real-time view of key information about the health of your IBM i partition. Dashboard is the new opening view in IBM Navigator for i. Data is updated automatically by default. Visual thresholds can be enabled as a way to easily identify potential issues. They are configurable to suit your specific business needs.

IBM Power Systems Performance



Each panel contains additional details when clicked on, including launch points to related performance tasks in Navigator:



Dashboard is also available with iAccess Mobile <http://system.name:2001/iamobile>

IBM Power Systems Performance

(Note: Dashboard will be available late in 2016 for 7.2 via the Fall Service Pack for Navigator.)

For additional details on Dashboard:

<https://www.ibm.com/developerworks/community/wikis/home?lang=en#!/wiki/IBM%20i%20Technology%20Updates/page/Dashboard>

6.2.3 *Automated Monitoring*

There are monitoring services available in both **IBM Navigator for i** and **Management Central** on System i Navigator (client-based GUI).

6.2.3.1 **IBM Navigator for i**

System and message monitors were added to IBM Navigator for i (web-based GUI) in 7.2.

The monitors can be used to pro-actively monitor system health and message queues, alerting you of potential performance problems before they become serious issues.

You can specify thresholds for various metrics on these monitors, and then specify actions to be taken whenever a monitor detects that a threshold has been triggered. For example, you can run an IBM i command or start a program when the threshold is triggered.

You can specify a monitor collection interval from 15 seconds to 300 seconds (5 minutes). Generally, for system monitors, 60 seconds will provide a good balance between timeliness and the size of the monitor data collection. 15 second collections can get large very quickly.

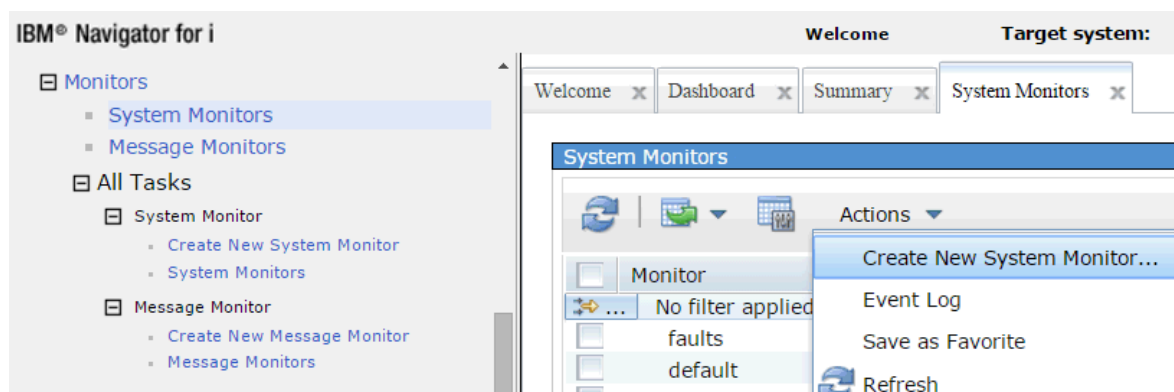


Figure 5 - IBM Navigator for i System Monitors

The system monitors in IBM Navigator for i use Performance Data Investigator to display the monitor graph performance data. These system monitors are limited to a single partition.

IBM Navigator for i system monitor metrics are collected, calculated, and managed by Collection Services and the data is stored in database files (no longer stored in a private *MGTCOL as was done in Management Central).

IBM Power Systems Performance

Because Collection Services now calculates and manages the system monitor metric data, the metric data can be generated for your Collection Services collection without ever starting an IBM Navigator for i System Monitor. To do this, specify CFTPFRSUM(*ALL) on either the CFGPFCOL or CRTPFRDTA command. Or you can start a system monitor collection using the CFGPFCOL command and specifying ENBSYSMON(*YES).

New in 7.3 is the ability to **Visualize Monitor Data** which allows you to view all the metrics monitored by a System Monitor on one panel.

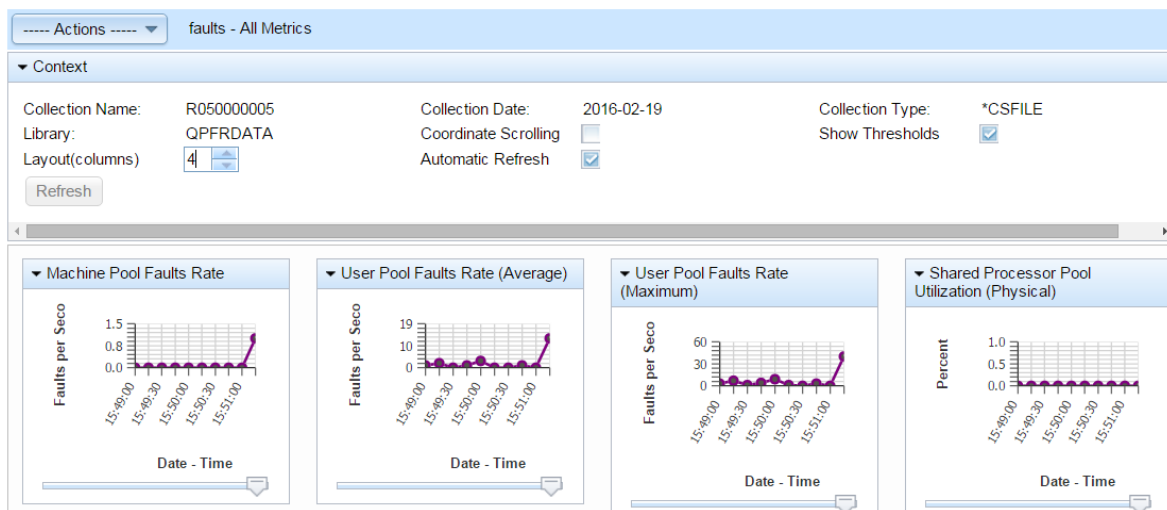


Figure 6 - Visualize Monitor Data

Visualize Monitor Data provides the following features:

- Automatic Refresh set to the metric collection interval
- Coordinate scrolling with all the graphs on the page
- Configuration of chart layout (number of columns and positioning)
- Launch to Graph History Summary charts

For additional information, please see:

[iCan Blog - IBM i 7.3 System Monitor Enhancements](#)

[iCan Blog - IBM i Navigator System Monitors: Collection Interval](#)

[IBM developerWorks – Visualize Monitor Data](#)

[Knowledge Center - IBM Navigator for i Monitors](#)

[iCan Blog - Navigator Monitors](#)

[iCan Blog - New Monitor Metrics](#)

[IBM developerWorks - System Monitors](#)

6.2.3.2 Management Central on System i Navigator

Shipped as part of System i Navigator (client-based GUI), Management Central monitors can be used to monitor system health, job performance, message queues, and changes to selected files.

IBM Power Systems Performance

IBM i 7.1 was the last release of System i Navigator and it is not supported on Windows 10. The following is the Management Central GUI:

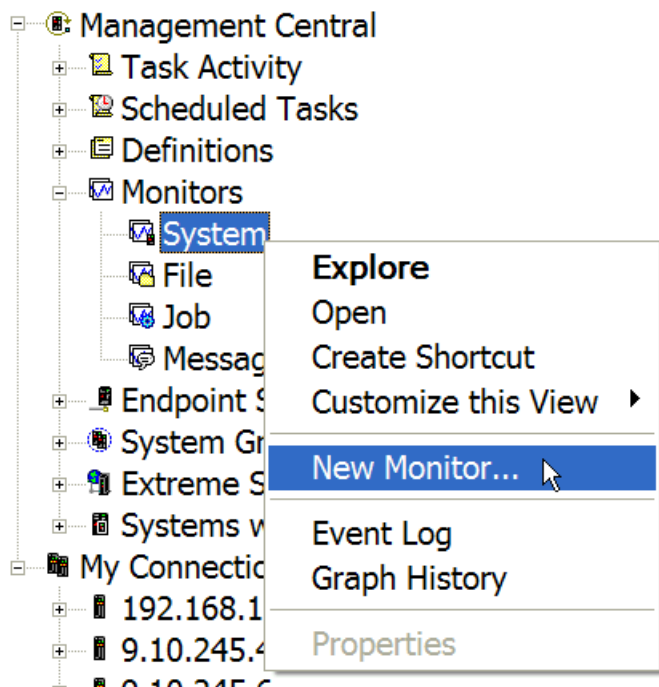


Figure 7 - Management Central GUI

You can use a system monitor to see detailed graphs that monitor the real-time performance of multiple IBM i partitions.

You can monitor your jobs and servers with a job monitor. For example, you might want to monitor a job's CPU usage or job status. For each of those metrics, you can specify a threshold and actions to take when that threshold is triggered.

For additional information on Management Central Monitors, please refer to:

[Management Central Monitors](#)

and

[Management Central](#)

6.2.4 *Watching for messages*

To monitor for messages, the system provides a watch-for-event function that allows you to watch for messages. The watch-for-event function allows you to specify messages for which you want the system to watch. When these messages occur, a user exit program is called to take any necessary action. You must specify the message queue or job log where you expect the message to be sent. You can specify some text string to be compared against the message data, the from-program, or the to-program. You can also select watches by message type or severity. Using this watch selection capability allows you to be informed of only certain messages. For more information, please see:

[Watching for messages](#)

6.3 Defining a Performance Problem (What is slow?)

Before collecting any additional data or making tuning or configuration changes, define what exactly is slow. A clear definition about what aspect is slow usually helps to shorten the amount of time it takes to resolve a performance problem and gives a performance analyst a better understanding of what data to collect and what to look for in the data.

A good way to define a performance problem is to answer questions like:

- Is everything slow or just a specific task?
- What application log file demonstrates the performance problem?
- Is it only slow when initiated remotely but runs fast locally?
- Is it slow for everyone or just for a single user?
- Etc.

6.4 Preparing Performance Data Collection

An IBM Systems Magazine article, [How to Be Proactive With Performance Problems in IBM i](#), explains how to configure the performance collectors for proactive performance monitoring.

7 Performance Data Collectors and Analysis Tools

7.1 Introduction

This chapter is intended to provide information on which tools are available to **collect** data on IBM i systems and the toolsets available to **visualize** the data, allowing you to more easily interpret and analyze the data.

7.2 Managing performance on IBM i

Managing performance requires the use of a variety of specialized applications. Each of these applications offers a specific insight into system performance. Some applications collect the data, while others are used to display, analyze, monitor or manage the data collected.

For more information, see the following links:

<http://www-03.ibm.com/systems/power/software/i/management/#tab2>
[Knowledge Center: IBM i Performance](#)

7.3 Performance Data Collectors

In the area of performance management, a key strength of IBM i is having collection technologies built into the operating system. The rich metric instrumentation provided can then be used by toolsets to aid in data analysis.

The primary data collectors include:

- Collection Services
- Disk Watcher
- Job Watcher
- Performance Explorer
- SQL plan cache

Each collector has a unique value-add and properties, including the type of data it collects - typically sample data or trace data. Sample data refers to metrics that are collected at some time interval. Trace data refers to data that is captured as system or application trace points are hit. Trace data records everything that happened while sample data shows what took place during the sample interval.

See Dawn May's blog posting, [Performance Data Collectors in IBM i](#), for more information on performance data collection tools.

Recommendations for configuring the performance data collectors are included in the sections below. For more detail about those recommendations, read the article [How to Be Proactive With Performance Problems in IBM i](#).

7.3.1 *Collection Services*

Collection Services provides for the collection of system and job level performance data. It is the primary collector of system data and IBM recommends you always run with Collection Services active.

Collection Services collects data from many system resources such as:

- CPU

IBM Power Systems Performance

- Memory pools
- Disk (internal and external)
- Communications
- Collection Services samples system and job level performance data with low overhead. It can collect data at regular intervals from 15 seconds to 1 hour (default is 15 minutes).

Often times, Collection Services is the first analysis tool used to:

- monitor how your system is running
- investigate a reported problem
- look for improvement candidates

Use Collection Services to understand resource usage, what is or is not being used, how did it change, when did it happen and what is affected.

Best practices for Collection Services:

- Collect using 5 minute intervals
- Keep at least 1 week of data
- Keep historical collections for comparison
- Enable cross partition performance collection on the HMC (see [Collecting and Viewing Performance Data for Entire Physical System](#))

Collection Services can be configured and managed through the IBM Navigator for i Performance interface, System i Navigator, IBM iDoctor for i, or CL commands. For more information, see [Knowledge Center: Collection Services](#)

7.3.2 *IBM i Disk Watcher*

IBM® i Disk Watcher provides for the collection of disk performance data to diagnose disk related performance problems.

IBM i Disk Watcher allows you to obtain data concerning I/O operations to disk units, along with frequently needed run-time data to determine which objects, files, processes, threads, and tasks are being accessed. This tool surfaces data beyond what is provided by such tools as WRKDSKSTS, WRKSYSSTS, and WRKSYSACT. Disk Watcher provides a mechanism to use short and longer duration traces to collect disk I/O data along with the associated task and object name.

The Disk Watcher performance data collector was added to the IBM i operating system with the 6.1 release.

Some potential uses of this tool are:

- Evaluating the performance of I/O operations on multi-path disk units
- Evaluating the performance of I/O queuing
- Determining how performance may be improved by re-spreading data across units
- Determining the optimal placement of devices, IOAs, or buses

IBM i Disk Watcher can be configured and managed through the IBM Navigator for i Performance interface, IBM iDoctor for IBM i, or CL commands.

IBM Power Systems Performance

For more information, see the following documents:

- [Knowledge Center: IBM i Disk Watcher](#)
- [IBM i Disk Watcher Can Do More](#)
- [Additional Capabilities of IBM i Disk Watcher](#)

7.3.3 *IBM i Job Watcher*

IBM® i Job Watcher provides for the collection of job data for any or all jobs, threads, and tasks on the system. It provides call stacks, SQL statements, objects being waited on, Java™ JVM statistics, wait statistics and more which are used to diagnose job related performance problems.

IBM i Job Watcher is similar in sampling function to the CL commands WRKACTJOB and WRKSYSACT in that each refresh computes delta information for the ending interval. The data collected from the jobs, threads, or tasks being watched is done so in a non-intrusive manner. The Job Watcher performance data collector was added to the IBM i operating system with the 6.1 release.

Best practices for Job Watcher:

- Consider running Job Watcher continuously
 - [QMGTOOLS: Job Watcher Monitor Function](#)
 - [iDoctor Monitors Guide](#)
- Use a definition with 5 or 10 second intervals, collect SQL information, and collect call stacks (Q10SECSQL for example)
- Keep historical collections for comparison

IBM i Job Watcher can be configured and managed through the IBM Navigator for i Performance interface, IBM iDoctor for IBM i, QMGTOOLS, or CL commands.

For more information, see the following: [Knowledge Center: IBM i Job Watcher](#)

7.3.4 *Performance Explorer (PEX)*

Performance Explorer collects more detailed information about a specific application, program or system resource, and provides detailed insight into a specific performance problem. This includes the capability both to perform several types and levels of traces and to run detailed reports.

Performance Explorer is a data collection tool that helps the user identify the causes of performance problems that cannot be identified by collecting data using Collection Services, Job Watcher or by doing general trend analysis. Two reasons to use Performance Explorer include:

- Isolating performance problems to the system resource, application, program, procedure, or method that is causing the problem
- Analyzing the performance of applications

As your computer environment grows both in size and in complexity, it is reasonable for your performance analysis to gain in complexity as well. Performance Explorer addresses this growth in complexity by gathering data on complex performance problems.

IBM Power Systems Performance

Note: Performance Explorer is the tool you need to use after you have tried the other tools. It gathers specific forms of data that can more easily isolate the factors involved in a performance problem; however, when you collect this data, you may significantly affect the performance of your system – especially if you collect this data improperly.

This tool is designed for application developers who are interested in understanding or improving the performance of their programs. It is also useful for users knowledgeable in performance management to help identify and isolate complex performance problems. Performance Explorer can be configured and managed through IBM iDoctor for IBM i or CL commands.

For more information, see the following: [Knowledge Center: IBM i Performance Explorer](#)
The Redbook for application performance is at the following link:
<http://www.redbooks.ibm.com/abstracts/sg247457.html>

Collector Data Characteristics			
Collection Services	Disk Watcher	Job Watcher	Performance Explorer
<ul style="list-style-type: none">▪ Sample data▪ Designed to collect data 24x7▪ Support for small intervals▪ No information concerning specific I/O operations▪ Wait time information	<ul style="list-style-type: none">▪ Statistics and Trace data▪ Detailed information focused on I/O operations to disk units	<ul style="list-style-type: none">▪ Sample data▪ Support for very small intervals▪ Focus on job data<ul style="list-style-type: none">- Call Stacks- SQL statements▪ Wait time information	<ul style="list-style-type: none">▪ Statistics, Profile, or Trace data▪ Information collection for every I/O event▪ Collection and analysis can be complex

Figure 8 - Collector data characteristics

7.3.5 *SQL Plan Cache*

The plan cache contains access plans for SQL queries that have run or are running on the partition. It also includes performance information such as query run times, CPU usage, and I/O usage. The plan cache does not survive an IPL, so it is a best practice to generate a plan cache snapshot before each IPL and before any major application or software changes. A snapshot can be generated using the stored procedure CALL QSYS2.DUMP_PLAN_CACHE or through the IBM Navigator for i console.

7.4 Analysis Tools

7.4.1 *Overview*

It's important to understand the difference between the **performance data collectors** and the **visualization** or analysis of that data. The performance data collectors are part of the

IBM Power Systems Performance

operating system and anyone can collect all types of performance data. However, to visualize or analyze that data possibly requires additional interfaces.




IBM provides several tools with varying user interfaces for viewing, analyzing, reporting, graphing, and managing performance data.

7.4.2 *Performance Tools for i*

The IBM Performance Tools (PT1) LPP contains many tools including performance reports for Collection Services. The performance reports are text-based and may not be the easiest way to analyze performance data; graphical analysis is often easier.

PT1 also provides Performance Data Investigator graphical analysis packages for:

- Disk Watcher, Performance Explorer (PEX), Database, and Batch Model with Product Option **1** installed
- Job Watcher with Product Option **3** installed

Product ID	Product Option	Release	Description
 5770PT1	0000	V7R3M0	IBM Performance Tools for i - Base
 5770PT1	0001	V7R3M0	Performance Tools - Manager Feature
 5770PT1	0002	V7R3M0	Performance Tools - Agent Feature
 5770PT1	0003	V7R3M0	Performance Tools - Job Watcher

Having the option(s) installed allows you to view the collected data in chart or table format from a web browser using PDI.

7.4.3 *IBM Navigator*

The Navigator for i family of products provide a comprehensive set of system management features for IBM i. Tasks included in the consoles cover everything from basic system's control to DB2 for i database control and beyond.

The IBM Navigator family includes both System i Navigator (windows client GUI) and IBM Navigator for i (web-based GUI).

7.4.3.1 *System i Navigator*

A PC-client installed GUI user-interface that is packaged with IBM i Access for Windows.

This console includes Management Central Monitors, Graph History, database functions including Visual Explain, and many other tasks.

Note that IBM i 7.1 was the last release of System i Navigator and it is not supported on Windows 10. IBM recommends you use the performance tasks in Navigator for i and move away from System i Navigator for performance management.

IBM Power Systems Performance

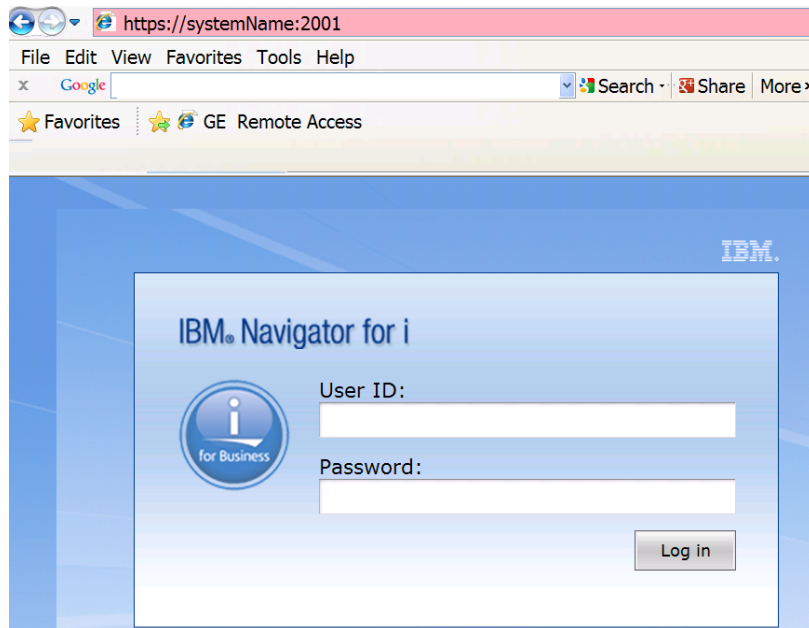


Figure 10 - IBM Navigator for i Menu

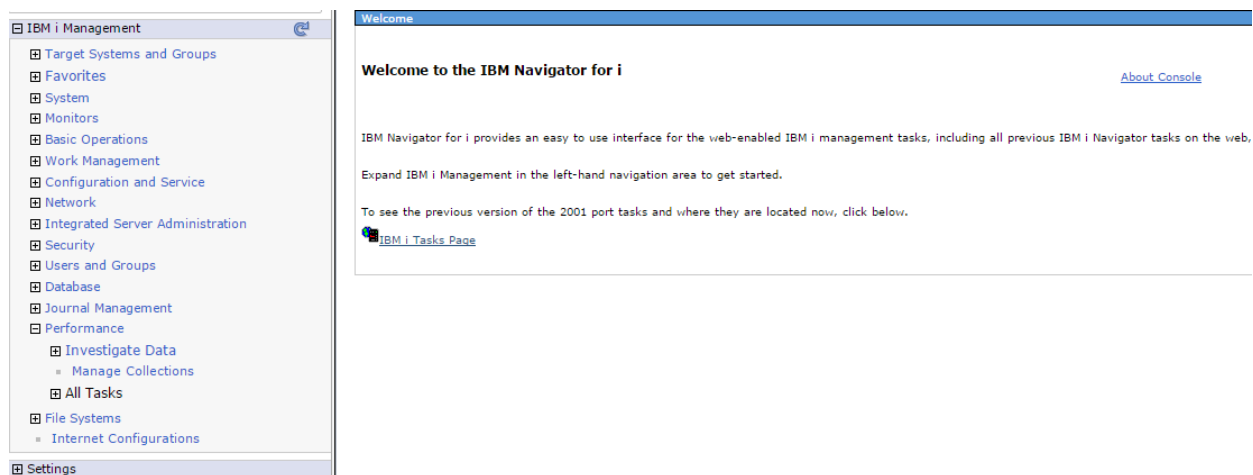


Figure 11 - IBM Navigator for i

For additional information, please refer to:

[Knowledge Center: IBM Navigator for i](#)

7.4.4 *Performance Data Investigator*

Performance Data Investigator (a function included in IBM Navigator for i) provides a web-based GUI for performance data with interactive charts and tables. It allows you to view and analyze performance data for each of the collectors (Collection Services, IBM® i Job Watcher, IBM i Disk Watcher, and Performance Explorer). It also contains charts for Health Indicators, Database, System Monitors (IBM i 7.2), and Graph History (IBM i 7.3). PDI also supports the [Batch Model function](#).

Other useful performance tasks found under Performance include configuration commands

IBM Power Systems Performance

for Collection Services, Disk Watcher and Job Watcher, Managing Collections and Performance Data Reports.

PDI is accessed by selecting the Performance category, then opening the Investigate Data tasks. From here, you will be able to access the many perspectives (charts and tables) grouped primarily by collector or relevancy of data contained:

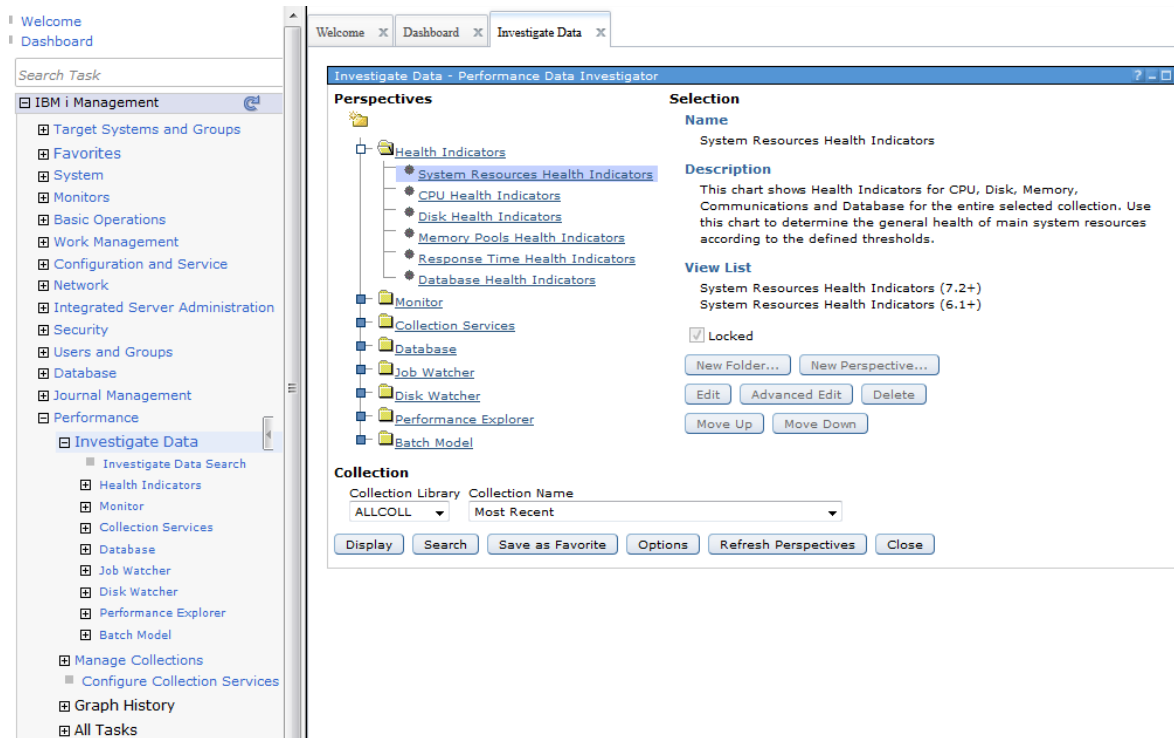


Figure 12 - Performance Data Investigator

The capability to view perspectives for Collection Services, Health Indicators, System Monitors (IBM i 7.2), and Graph History (IBM i 7.3) is included with the Base operating system. To view perspectives for Disk Watcher, Database, Performance Explorer, and Batch Model (IBM i 7.2), Option 1 (Manager feature) of Performance Tools for i LPP is required. Similarly, to view Job Watcher data, Option 3 (Job Watcher) of Performance Tools for i LPP is required (this is a separate chargeable option).

IBM Power Systems Performance



Figure 13 - Performance Data Investigator example

New in IBM i 7.3 is Graph History charts using Collection Services historical data.

In the Graph History window, you can see a graphical view of the metrics that have been collected for an extended period of time by Collection Services. You can contrast this data with the real-time data shown in a System Monitor window.

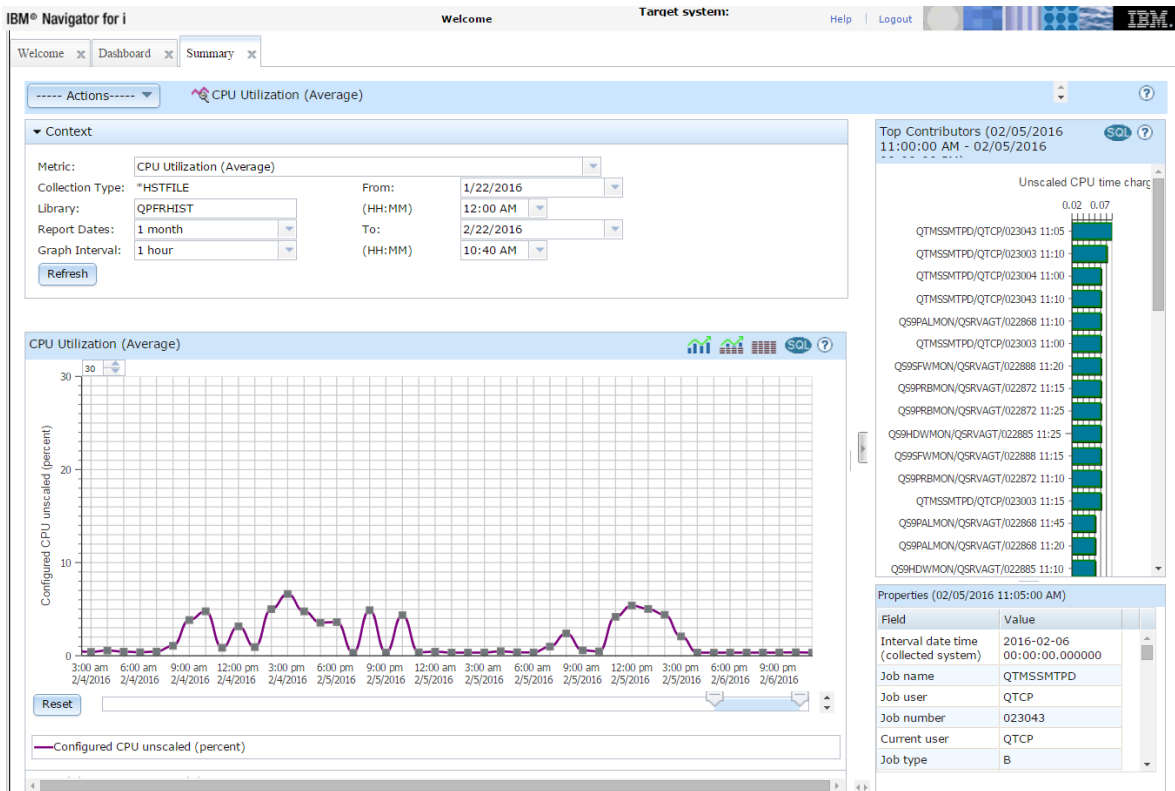


Figure 14 - Graph History example

IBM Power Systems Performance

For more information see the following links:

- [A new way to analyze historical performance data on IBM i](#)
- [IBM i Performance Data Investigator](#)
- [IBM Knowledge Center: Performance Data Investigator](#)
- [IBM i Performance Tools & Performance Data Investigator \(PDI\) Forum](#)

7.4.5 *IBM iDoctor for IBM i*

IBM iDoctor for IBM i is a Windows based suite of performance tools that can be used for analysis of Collection Services, Job Watcher, PEX, Disk Watcher, and SQL Plan Cache Snapshots. iDoctor also has a Power Connections component capable of collecting and analyzing data from the HMC and VIOS, AIX, and Linux partitions.

IBM i Connections	Power Connections
<ul style="list-style-type: none">• Collection Services Investigator• Job Watcher• PEX Analyzer• Disk Watcher• Plan Cache Analyzer• iDoctor Monitors	<ul style="list-style-type: none">• VIOS – NMON, FCSTAT, SEASTAT, VIOS ADVISOR, Disk Mappings, PERFPMR• HMC – Configuration information and graphs based on LSLPARUTIL• AIX – NMON• Linux – NMON

Figure 15 - iDoctor components

IBM iDoctor for IBM i is generally used by the performance expert to collect, investigate and analyze performance data on IBM i. The tools are used to monitor overall system health at a high "overview" level or to drill down to the performance details within job(s), disk unit(s) and/or programs over data collected during performance situations.

IBM Power Systems Performance

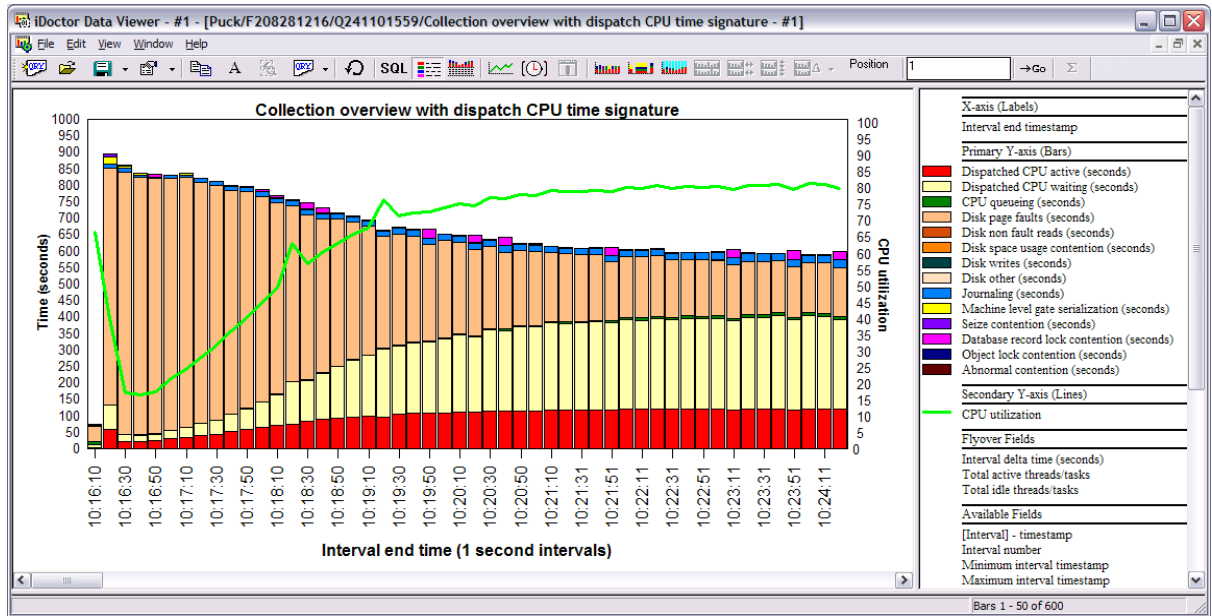


Figure 16 - iDoctor example

iDoctor is constantly evolving to meet the needs of our clients. Therefore, it is not a formal licensed program product. The software is licensed for use under a service agreement. For more information, a free 45 day trial license, or a price quote please visit the following link: https://www-912.ibm.com/i_dir/idoctor.nsf. Training for iDoctor is available. For more information see the Education and Training section of chapter 16.

7.4.6 Tools Matrix

The following chart shows at a high level the data that can be analyzed by the various IBM i performance analysis tools.

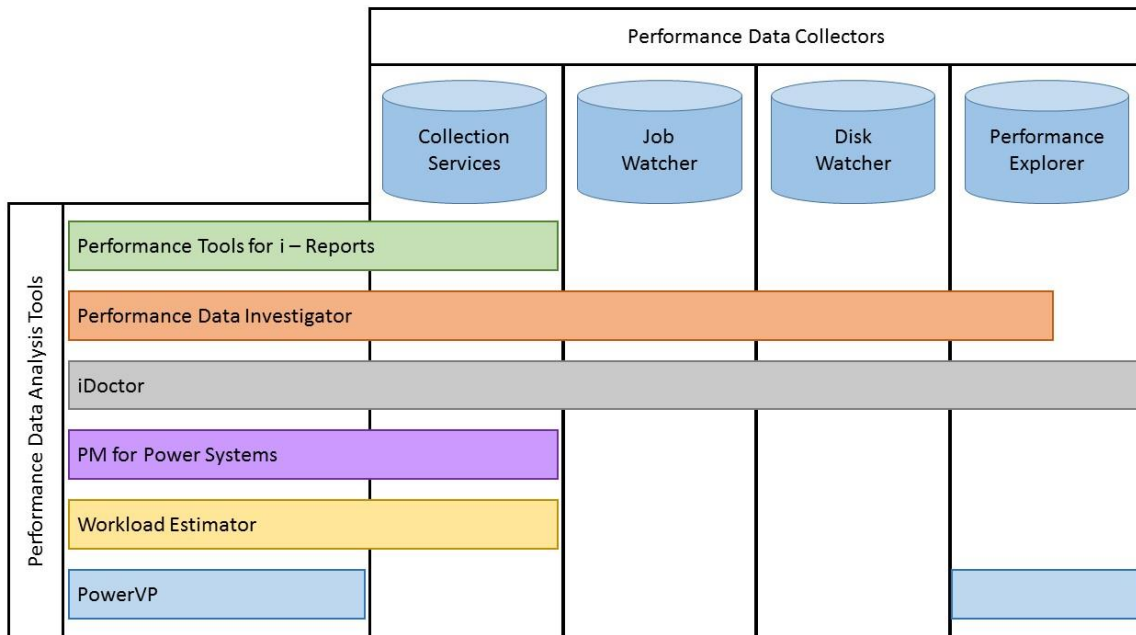


Figure 17 - Relationship between collector and major functions / interfaces

8 Frequently Asked Questions

8.1 Introduction

This chapter covers frequently asked questions.

8.2 General Questions

8.2.1 *What are the general performance tuning recommendations for best IBM i performance?*

There is no such thing as a general performance tuning recommendation.

8.2.2 *I heard that... something on the internet said... should I change...?*

No, never apply any tuning changes based on information from unofficial channels and always consider the author or source of that information. Make sure the advice applies to IBM i, especially when related to Java and DB2. Configuration and application changes should be done based on performance analysis and tested before being made in production.

8.2.3 *My <CPU, disk, memory> usage is high, should I add more resource?*

Before adding more hardware, ensure the resources you have are being utilized efficiently. System tuning, database and application analysis often can result in significant improvements in performance.

8.2.4 *Why didn't the performance of my partition improve after I added <CPU, memory, disk arms, SSDs>?*

The bottleneck may not have been related to the resource you added (CPU, disk, memory). Proper wait time analysis should be done to identify the bottleneck and how to best resolve it. See the [Components of Response Time](#) section earlier in this document.

8.2.5 *Should I update PTFs before undertaking a performance analysis project?*

Yes! There are often PTFs that resolve performance problems you may be experiencing. You should install the latest cumulative and group PTFs and technology refresh (TR) levels.

[IBM i Technology Updates](#)

Some PTFs are required before certain performance data can be collected. In addition to the latest performance tools group PTFs (SF99144 for 6.1, SF99145 for 7.1, and SF99714 for 7.2), the following lists should be checked for addition PTFs:

For 7.2

[Job Watcher, Performance Explorer \(PEX\), and Disk Watcher PTFs for IBM i 7.2](#)

for 7.1

[Job Watcher, Performance Explorer \(PEX\), and Disk Watcher PTFs for IBM i 7.1](#)

and the list of 6.1 PTFs is here:

[Job Watcher, Performance Explorer \(PEX\), and Disk Watcher PTFs for IBM i 6.1 and 6.1.1](#)

You can find information on the latest DB2 for IBM i fixes and enhancements at the following link. IBM recommends staying current on fixpacks, which can include performance enhancements.

[DB2 for i - Technology Updates](#)

IBM Power Systems Performance

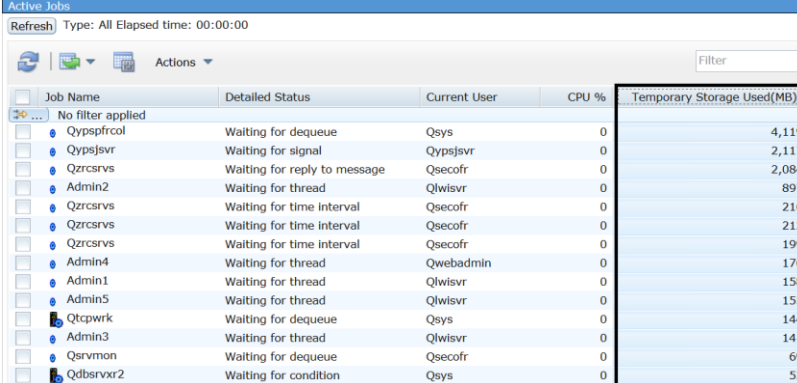
You should also keep the firmware level current as this can also affect overall system performance. Additionally, certain performance data will only be collected if you are at a minimum firmware level.

PTFs have also been released that enhance the functionality of the features in Navigator, including the performance tasks. You should be sure to have the latest levels of the following groups for full functionality of the Navigator tasks.

- Performance Tools group
- HTTP Server group
- Java group
- Database group

8.2.6 *How can I find out which jobs are consuming the most temporary storage on my partition?*

Prior to the 7.2 release, this was a very tedious job. The good news is in 7.2, IBM has made many improvements to address these difficulties. The most significant is how temporary storage is tracked. How temporary storage is allocated (to a job, independent of a job, shared between jobs) does not change, but how the system keeps track of where temporary storage is used is vastly improved. The system now has a concept of temporary storage buckets that can tell you exactly where all the temporary storage is being used. The enhancements include being able to now see temporary storage used by a job in Active Jobs in IBM Navigator for i, as well as on WRKACTJOB. By adding in this new column and sorting in a descending fashion, you can now see the top consumers of temporary storage:



Job Name	Detailed Status	Current User	CPU %	Temporary Storage Used(MB)
No filter applied				
Qypspfrcol	Waiting for dequeue	Qsys	0	4,119
Qypsjsvr	Waiting for signal	Qypsjsvr	0	2,117
Qzrcsrsvs	Waiting for reply to message	Qsecofr	0	2,084
Admin2	Waiting for thread	Qlwisvr	0	897
Qzrcsrsvs	Waiting for time interval	Qsecofr	0	216
Qzrcsrsvs	Waiting for time interval	Qsecofr	0	212
Qzrcsrsvs	Waiting for time interval	Qsecofr	0	199
Admin4	Waiting for thread	Qwebadmin	0	176
Admin1	Waiting for thread	Qlwisvr	0	158
Admin5	Waiting for thread	Qlwisvr	0	155
Qtcpwrk	Waiting for dequeue	Qsys	0	144
Admin3	Waiting for thread	Qlwisvr	0	141
Qsrvmn	Waiting for dequeue	Qsecofr	0	69
Qdbsrvxr2	Waiting for condition	Qsys	0	52

Figure 18 - Temporary Storage Used

For additional information on this 7.2 enhancement:

[iCan: Temporary Storage Part 1](#)

[iCan: Temporary Storage Part 2](#)

[iCan: Temporary Storage Part 3](#)

[iCan: Temporary Storage Part 4](#)

[iCan: Temporary Storage Part 5](#)

[iCan: Temporary Storage Part 6](#)

[iCan: Temporary Storage Part 7](#)

8.2.7 *There are two graphical interfaces for IBM i performance data – the Performance Data Investigator (PDI) and iDoctor. Which should I use?*

Like all performance related questions, it depends. IBM i is an industry leader with its rich integrated [Performance Data Collectors](#). In order to visualize all the various data collected in meaningful ways, IBM has two graphical user interfaces available, the Performance Data Investigator (PDI) and iDoctor. Both of these GUI tools provide visualization over the various types of IBM i performance data.

In general, PDI is geared toward the average user and iDoctor is geared to the expert user who does performance diagnostics frequently. PDI is somewhat more limited in features and functions, but is easier to learn and use. PDI is included with the operating system and you can visualize Collection Services data with no additional products or cost. iDoctor has many advanced features and capabilities and tends to be a more complex tool. However, for deep diagnostics, iDoctor can provide insights into the data where PDI is more limited.

A key advantage of PDI is that it is a task within Navigator for i. This means everyone has PDI and it has valuable integration with other IBM i management tasks. For example, you can launch PDI from active jobs, database tasks, System Monitors, and Graph History. iDoctor is a separate user interface that does not have this level of integration with Navigator management tasks.

A key advantage of iDoctor is the advanced features it provides. The ability to visualize external storage metrics from the DS8K storage systems, as well as the IBM iDoctor Power Connections, which allow you to also analyze performance data from AIX, Linux, VIOS, or the HMC, provides a more comprehensive tool for those who need it.

The table below summarizes the key differences between PDI and iDoctor to help you determine which interface is best for you.

Feature	PDI	iDoctor
User interface	Browser No client OS restrictions	Windows application
IBM i Performance Data Supported	Collection Services Job Watcher Disk Watcher Limited support for Performance Explorer - profile collections only	Collection Services Job Watcher Disk Watcher Performance Explorer
Update Frequency	Generally, two times a year	Quarterly
Support	Normal product support	Email idoctor@us.ibm.com for support
National Language Support	Translated	English only
License	PDI is part of the base OS IBM i Performance Tools LPP required for some features	Yearly license terms and charges

8.3 CPU Questions

8.3.1 *How can I reduce CPU usage on the partition?*

Typically, this requires collecting and analyzing performance data from running jobs. Sometimes you can shift scheduled jobs to run during periods of lower CPU utilization. The best approach will depend on which workloads or applications are dominating system performance. See the following sections for tuning specific application types:

Tune SQL performance (see [SQL performance section](#)).

Tune RPG/COBOL application performance (see section on [RPG/COBOL performance](#)).

Tune Java/WebSphere application performance (see [Java/WAS section](#)).

8.3.2 *What can I do if I can't reduce my CPU consumption?*

- Change shared processor partitions to be uncapped and set virtual processors (VPs) higher than number of configured processing units.
- Don't exceed your software licenses.
- Don't configure more VPs than are needed for uncapping and workload demand (from spare capacity).
- Don't set the number of VPs higher than the number of licensed processors in the machine (or processors in the shared pool if dedicated processor partitions are not donating unused cycles).
- Add more processing capacity if system, database, and application tuning has not reduced CPU usage sufficiently.
- Use powerful performance tools to understand processor utilization and logical partitioning effects (e.g. CPU queuing, latencies, and shared processor behavior). The iDoctor tool is a valuable tool to understand these effects.

For detailed logical partition tuning tips, see:

[Under the Hood: POWER7 Logical Partitions](#)

8.3.3 *How can I keep certain workloads from impacting my whole partition?*

- Configure Workload Groups to limit the amount of CPU being used.
[Workload Groups](#)
- Reduce the priority of the jobs and increase the priority of other jobs.
- Put the jobs in their own subsystem to control the amount of memory they can consume. Then configure the shared pool settings properly to limit how large (and small) each memory pool can become.
- Consider limiting which jobs utilize the parallel processing capabilities of DB2 SMP (5770SS1 Product option 26 DB2 Symmetric Multiprocessing), especially for long running SQL queries such as ad-hoc queries or reporting.
- Collection Services collects data for workload groups. Performance Data Investigator and iDoctor can be used for visualization/analysis of workload groups.

8.3.4 *The performance of my system is inconsistent. What could cause that?*

One of the first things to check is your system's energy management settings. IBM Power systems can be managed by an HMC. These tools allow users to implement power-capping or power-saving modes. When you use power-capping or power-savings modes and these technologies are in effect, the frequency of the processor may change.

For more information on EnergyScale see:

If the processor is slowed down in order to save energy, that's something that can be important to be aware of if you're concerned about performance. The scaled CPU time allows you to know whether the energy-management features have taken effect on that partition.

For additional information, see:

<http://ibmsystemsmag.com/Blogs/i-can/Archive/i-can-understand-scaled-cpu-time/>

8.4 Memory Questions

8.4.1 *How should I configure my partition's memory pools?*

Every partition is different, but here are some general guidelines:

- In general, enable Expert Cache on most user pools (i.e. *CALC). Read more here: [Expert Cache - How It Works](#)
- Add memory to the machine pool if the fault rate of that pool is more than 10 faults per second and the amount of memory used in the pool is high.
- Set the maximum activity level high enough to avoid transitions to ineligible, but not higher than necessary (especially for pools running SQL).

8.4.2 *Should I turn on the Performance Adjuster (QPFRADJ)?*

Most customers can benefit from using the performance adjuster. The following experience report is helpful for understanding QPFRADJ: [Performance Adjuster](#).

Make sure you configure the shared pool settings properly to limit how large (and small) each memory pool can become. If you chose not to use QPFRADJ, make sure the max activity level is high enough to avoid transitions to ineligible. Java applications have special considerations when it comes to QPFRADJ. See the [Java chapter](#) for details.

8.4.3 *How can I tell what is in my partition's memory pools?*

The DMPMEMINF command can provide this information.

This command is described in the IBM i Knowledge Center:

[Dump Main Memory Information \(DMPMEMINF\)](#)

8.4.4 *When should I add more memory to my partition?*

As a general guideline you should limit the amount of time spent waiting on disk faults to 25% of the runtime of an average job on the system. If application optimization cannot reduce jobs below this level, consider adding more memory.

Also check the performance of the I/O subsystem to ensure disk requests are being completed with good response times.

8.4.5 *What are the "Memory page fault guidelines"?*

With the wide variety of applications that now run on IBM i it is not possible to come up with guidelines that would satisfy every scenario. As a result, IBM no longer publishes general faulting guidelines for user pools.

8.5 I/O Questions

Many of the approaches that reduce CPU usage can also reduce the number of I/O operations, especially those related to improving database and SQL performance. There

IBM Power Systems Performance

are also opportunities to improve the performance of the I/O subsystem.

8.5.1 *What are some common disk subsystem configuration changes that can hurt performance?*

- Mixing drive sizes in the same ASP.
- Having some IOAs with more disk drives than other IOAs.
- Having too many disk units on the same IOA.
- Having a single parity set when utilizing paired (or dual) SAS disk IOAs.
- Maintaining consistency in drive size will help keep disk performance consistent. Do not include new drives in existing arrays if your adapter supports this. Instead stop protection and start protection so all drives contain parity data. This avoids configuring drives with more capacity which leads to increased IO requests and the potential to be hot.
- Adding new drives to an ASP without using the “Add and Balance” option.
- Reducing the number of disk arms when migrating to a new storage solution.
- Implementing a high availability replication solution without a properly sized link between source and target disk subsystems.
- Introducing Real-time Compression to an SVC, Storwize, or FlashSystem V840/V9000 storage system. See [Hints and Tips for implementing Storwize V7000](#)

8.5.2 *How can I analyze I/O subsystem performance?*

- Use Collection Services and Disk Watcher to collect and analyze disk performance.
- Use the SQL Plan Cache and Visual Explain to identify SQL causing a large number of I/Os.

Read the [RPG/COBOL and Native I/O](#) section for more tips.

8.5.3 *I can't modify my applications. What can I do to improve my I/O performance?*

- Install more memory or disk drives.
- Install Solid State Drives (SSDs) and move hot objects to them.
- Use the Workload Estimator or contact an IBM Business Partner or Sales Representative to size for a storage solution that will deliver faster performance. See section 8.5.6.

8.5.4 *How do I virtualize IBM Serial-Attached SCSI (SAS) adapters for the best performance?*

For the best performance, consider using IBM i as the storage host over using a Virtual I/O Server (VIOS). When using VIOS, besides sizing VIOS CPU and memory, it is important to consider how the physical storage is virtualized. There are several configuration options available when using VIOS. Making the wrong choice can negatively impact I/O performance compared to internal or IBM i hosted disks. Take into account the performance considerations described in the following documents when choosing to virtualize IBM SAS adapters with VIOS.

Section 3.9 titled “VIOS vSCSI disks and IBM i client partitions” of the “IBM Power Systems RAID Solutions Introduction and Technical Overview” Redbook found at: [IBM Power Systems RAID Solutions Introduction and Technical Overview](#)

The following link has even more details on the documentation on the requirements and setup of the performance boost:

[SAS Adapter Performance Boost with VIOS](#)

8.5.5 *How can I tell if my applications will benefit from SSDs?*

There are several tools that indicate whether or not SSDs can improve application or system performance.

- SSD Analyzer:
<http://www-03.ibm.com/support/techdocs/atmastr.nsf/WebIndex/PRS3780>
- iDoctor SSDs Improvement Estimator and Collection Services Investigator:
[IBM iDoctor for IBM i 7.1](#)

8.5.6 *How many and what type of storage I/O products will meet performance requirements for an upgrade or new system or workload?*

Since measured values of the various direct and SAN attached storage adapters, devices and servers are built into the Workload Estimator (WLE) algorithms, it is the recommended tool to glean capabilities and make comparisons, assuming benchmarking with the target workloads on real hardware is not feasible.

White papers located on the Performance management on IBM i Resources website are available for general performance knowledge, already documented comparisons and tuning suggestions.

IBM i storage performance white papers are available at:

[IBM i Storage Solutions](#)

If SAN attached storage servers are required you can use either WLE or Disk Magic, or feed WLE output into Disk Magic via a .dmc file for comparing and estimating speed.

There are also several Redbooks available specific to SAN with IBM i and other information on the following websites:

<http://www-03.ibm.com/systems/storage/>

<https://www-03.ibm.com/support/techdocs/atmastr.nsf/Web/Techdocs>

For particular direct attached storage products:

- Historical information can be seen in versions of the IBM i Performance Capabilities Reference previous to the April 2014 version, located at:
[Performance Capabilities Reference – February 2013](#)
- The most recent comparison of SAS adapter technology can be found at:
[Performance Study of 2nd Generation IBM Power Systems SAS RAID Adapters Designed for Solid State Storage](#)

8.5.7 *How can I tell if a FlashSystem solution is the best storage configuration for my environment?*

There are many websites out there that explain the performance, functionality, and cost advantages of an IBM FlashSystem over both hard disk drives (HDD) and solid state drives (SSD). The following website answers many of these questions:

<http://www.redbooks.ibm.com/redpieces/abstracts/redp5020.html>.

Nevertheless, there can still be conditions that prevent your environment from getting the expected performance improvements when moving to a FlashSystem solution (which can

IBM Power Systems Performance

include average disk read response times as low as .5 milliseconds per I/O). One of the most common reasons is that the current IBM Power System configuration is experiencing some other resource constraint, or wait condition, unrelated to the I/O subsystem. The results of a faster FlashSystem solution could be masked by these conditions, and might even make the response times worse if they push more work to drive additional thrashing. It is also possible that write intensive workloads could become slower. Even though Flash has acceptable write response times, nothing can compare to the speed of writing to cache in an IOA. Internal HDDs are typically configured to IOA's with very large write cache allowing most write IOP's to be asynchronous (or appear to be so due to fast response times).

To help customers identify situations that could prevent the expected response times, and also to help project the run time improvements of the most I/O intensive jobs, IBM Systems Lab Services offers an “IBMi Workload Assessment for FlashSystem Solution”. For more information, complete this form:

<http://www-03.ibm.com/systems/services/labservices/contact.html>

8.5.8 *How do I analyze I/O performance if I'm using external storage?*

There are many components to consider when external storage is being used. Latency can be added in the virtualization layer (VIOS and Power Hypervisor) and SAN which are located between the IBM i and storage. A good strategy is to compare the IBM i disk service times with the response times measured on the storage. If the service times and response times are close to the same, then the problem is likely in the storage. If the IBM i service time is higher than the storage, then latency is likely being added in the SAN or virtualization layer. Collection Services can be used to measure the service times on the IBM i. There are several ways to measure the response times on the storage depending on what is being used.

IBM TPC for Disk can be used to analyze performance of most IBM Storage Systems.

[IBM Tivoli Storage Productivity Centre \(TPC\) Suite](#)

IBM iDoctor for i – Collection Services Investigator can be used to analyze data that is automatically collected from attached DS8000 Storage systems. Graphs are available which visualize the delta between IBM i service times and DS8000 LUN response times. Graphs are also available for cache, fiber channel ports, and ranks.

[IBM i 7.1 Technical Overview - Section 8.3.6](#)

QMGTOOLS can be used to collect and import snapshots and performance files collected from SVC or Storwize systems. After import the data is then visible in iDoctor Collection Services Investigator.

[QMGTOOLS SVCIMPORT](#)

8.6 How do I tune IBM i database performance?

See [chapter 9](#) for details on database performance tuning.

8.7 How do I tune journal and recovery performance?

At IBM i releases prior to 7.1 make sure that the journal threshold for all user journals is at least 6.4GB. As of IBM i 7.1 this is no longer necessary.

The journal receiver size option (RCVSILOPT) should preferably specify at least *MAXOPT2 and *RMVINTENT.

The Journal Management guide has more details on these commands:

[Journal Management Guide](#)

8.8 How do I tune access path recovery performance?

System-Managed Access Path Protection (SMAPP) offers system monitoring of potential access path rebuild time and automatically starts and stops journaling of system selected access paths. In the unlikely event of an abnormal IPL, this allows for faster access path recovery time.

An estimation of how long access path recovery will take is provided by SMAPP, and SMAPP provides a setting for the acceptable length of recovery. For most customers, the default value will minimize the performance impact, while at the same time provide a reasonable and predictable recovery time and protection for critical access paths. But the overhead of SMAPP will vary from system to system and application to application.

As the target access path recovery time is lowered, the performance impact from SMAPP will increase as the SMAPP background tasks have to work harder to meet this target. There is a balance of recovery time requirements vs. the system resources required by SMAPP. The access path recovery time should not be set to *NONE or *OFF.

Although SMAPP may start journaling access paths, it is recommended that the most important/large/critical/performance sensitive access paths be journaled explicitly with STRJRNAP. This eliminates the extra overhead of SMAPP evaluating these access paths and implicitly starting journaling for the same access path day after day.

There are 3 sets of tasks which do the SMAPP work. These tasks work in the background at low priority to minimize the impact of SMAPP on system performance. The tasks are as follows:

- JO-EVALUATE-TSKn (where n is 0 or 1) - Evaluates indexes, estimates rebuild time for an index, and may start or stop implicit journaling of an index.
- JO-TUNING-TASK - Periodically wakes up to consider where the user recovery threshold is set and manages which indexes should be implicitly journaled.
- JO-RECRA-Dx-xx-x and JORECRA-USR-xxx tasks are the worker tasks which sweep aged journal pages from main memory to minimize the amount of recovery needed during IPL.

Here are guidelines for lowering the amount of work for each of these tasks:

- If the JO-TUNING-TASK seems busy, you may want to increase SMAPP recovery target time.
- If the JO-EVALUATE task seems busy, explicitly journaling the largest access paths may help or looks for jobs that are opening/closing files repeatedly.
- If the JORECRA tasks seem busy, you may want to increase journal recovery ratio.

IBM Power Systems Performance

- Also, if the target recovery time is not being met there may be SMAPP ineligible access paths. These should be modified so as to become SMAPP eligible.

To monitor the performance impacts of SMAPP there are Performance Explorer trace points and a substantial set of Collection Services counters which provide information on the SMAPP work.

For more information on reducing access path recovery time see the IBM Knowledge Center entry at:

[Reducing time in access path recovery](#)

8.9 How do I tune network performance?

The network adaptors being used will determine the maximum speed which could be reached, e.g. 1Gb, 10Gb, etc (at least in theory). However the protocol being used, the networking parameters set and the quality of the connections as well as other systems in the same subnet in the network will determine the actual performance in terms of network throughput and speed. Performance Collection Services collect vital data from the use of networking resources and can be used to determine the actual speed and throughput numbers of the network.

- Consider increasing the TCP/IP buffer for send and receive operations via the CHGTCPA command to a value greater than the default of 64KB. This can significantly reduce the network traffic.
- Ensure the parameters for current line speed is reflecting what the adapter is being capable of, e.g. 1Gb, 10Gb, etc. A single device with a lower line speed capability will force the whole subnet in the network to run at the lower speed and can severely degrade network performance.
- Ensure the current DUPLEX parameter is set to *FULL so the connection can be used for send and receive at the same time.
- Consider increasing the maximum frame size from 1496 bytes to 8996 bytes as this can significantly reduce the traffic between the system and the next network router and speed up the connections especially when virtual Ethernet connections are used.
- Consider using multiple network connections together and use link aggregation to bundle as shown in the following diagram for example four 1Gb connections into one 4Gb link. This aggregated link provides a significant bandwidth improvement.

For more information, see:

[Ethernet Link Aggregation in IBM i](#)

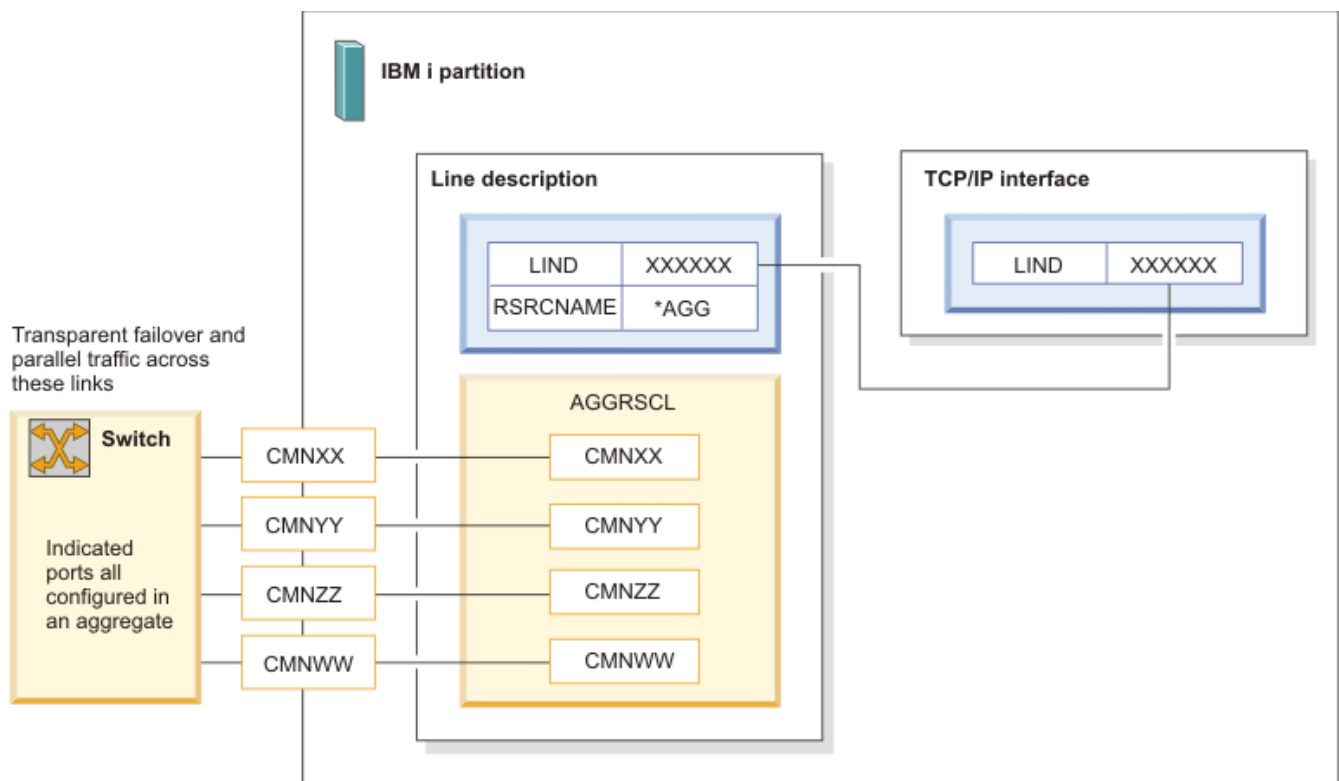


Figure 19 - Network Link Aggregation

More information on optimizing communications performance can be found in the following IBM i Knowledge Center section:

[Optimizing communications performance](#)

8.10 How can I improve the performance of Java and/or WebSphere Application Server applications?

See the [Java and WebSphere chapter](#).

8.11 How do I tune RPG/COBOL application performance and native I/O file access?

See the [RPG/COBOL and native I/O chapter](#).

8.12 Can security settings affect performance?

Protecting information is an important part of most applications. Security should be considered, along with other requirements, at the time the application is designed. When security is integrated properly into application design, it will result in the best performance. It is when security is not implemented correctly that performance problems typically occur.

Defining a large number of private authorities can negatively affect performance. The following links to the IBM i Knowledge Center show how authority checking is done. A properly architected solution will balance security concerns with performance.

[Flowchart 1: Main authority checking process](#)

[Flowchart 2: Fast path for object authority checking](#)

When implemented correctly, the application fast path will generally be taken through program adoption of the owner. When public and private authorities are added,

IBM Power Systems Performance
 complications can arise, impacting performance.

Collection Services includes two metrics that can be useful for monitoring authority activity. The metrics are SYAUTH and SYNUAL in the file QAPMSYSTEM. SYAUTH counts the number of object authority checks system wide. SYNUAL counts the number of non-cached user authority lookups.

8.13 What are some inefficient application issues I can identify at a system level?

Having a high rate of database file full opens can lead to poor performance. Full opens can come from SQL or programs using native I/O. Collection Services collects the number of database file full opens at both a system level and a thread level. This data can be visualized using either PDI or iDoctor.

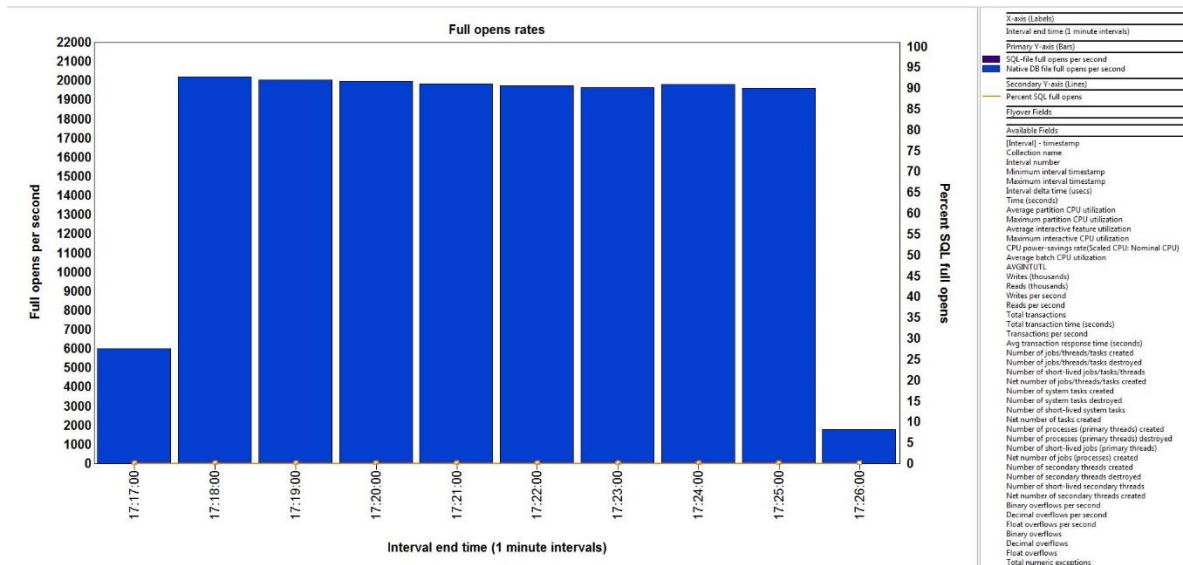


Figure 20 - Full Opens in iDoctor Collection Services Investigator

To identify the programs causing the full opens, a PEX trace can be collected using the *DBOPEN OS event. The PEX trace can be analyzed using the PEX Analyzer component of iDoctor

Having a high rate of activation group creations is also inefficient. Starting with IBM i 7.2, Collection Services collects the number of groups and programs activated at a system and thread level. This data can be visualized using iDoctor.

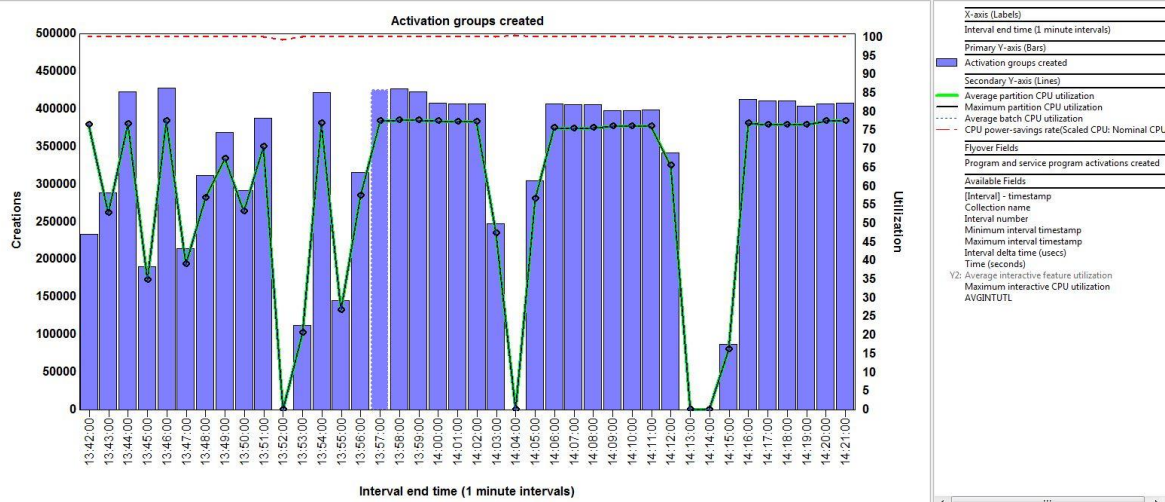


Figure 21 – Activation Groups Created in iDoctor Collection Services Investigator

To identify the programs causing the activation group creates, a PEX trace can be collected using the *ACTGRPCRT Base event. The PEX trace can be analyzed using the PEX Analyzer component of iDoctor.

8.14 What is the largest number of cores that can be assigned to an IBM i partition?

There are two partition core limits for IBM i. The first is the standard limit which is either 32 or 48 cores depending on the IBM i release and Power hardware hosting the partition. Customers who need to exceed this limit can go through an assessment process to validate that their partitions will benefit from having additional cores. The maximum number of cores allowed depends on the level of IBM i and Power hardware, as well as the results of the assessment. Please consult the following matrix showing the various core limits. For more information, please contact Mark Even (even@us.ibm.com).

OS level	Standard Partition Core Limit			Max allowed w/assessment		
	POWER6	POWER7	POWER8	POWER6	POWER7	POWER8
IBM i 7.1	32	32	32	64	64	32 SMT8 64 SMT4
IBM i 7.2	32	32	48	64	96	96
IBM i 7.3	n/a	32	48	n/a	96	96 SMT8 192 SMT4

8.15 How can I improve the scalability of my large IBM i partition?

Something that is done inefficiently but infrequently may not be a problem. If that activity

IBM Power Systems Performance

is done more and more frequently it can become a major problem. It is not uncommon for a program written 10 years ago to access a small file accessed by a few users be an issue today because that file has grown to millions of records and is being accessed by hundreds of users. To avoid such a problem, make sure your applications are not doing the following "worst practices":

- issuing a high rate of full file opens and closes
- creating and destroying activation groups at a high rate
- frequently destroying large activation groups
- causing a high rate of job initiations and terminations

The rate metrics for these scaling issues are collected by Collection Services and can be viewed using either Performance Data Investigator (PDI) or iDoctor Collection Services Investigator (CSI). See [section 8.13](#) for more information on some of these metrics.

In addition to application coding practices, the following partition configuration areas are important for scalability:

- partitions with many cores should use dedicated processors for best performance
- placement of partition resources (memory and cores) on the physical hardware

8.16 Where can I find more information on performance tuning?

The IBM i Knowledge Center is a great resource for learning about performance tuning. The top level link for tuning system performance is:

[Monitoring and Managing Performance](#)

The Performance Management on IBM i web site has more information about performance data collectors and visualizers:

<http://www-03.ibm.com/systems/power/software/i/management/#tab2>

The [References](#) chapter has many more links related to performance.

8.17 IBM Lab Services and Training

The IBM Systems Lab Services and Training organization

<http://www-03.ibm.com/systems/services/labservices/>

is available to assist customers with resolving system, application, and database performance problems. Formal and informal training opportunities are also available where customers learn how to use the performance tools and resolve performance problems on their own. The IBM i performance team can be contacted via e-mail to Eric Barsness at ericbar@us.ibm.com.

The IBM DB2 Center of Excellence team in Lab Services is also available to help clients in all areas of DB2 on i including Business Intelligence (BI), Analytics, DB2 Web Query, database modernization, Very Large Database (VLDB) design, performance, and more. Contact Mike Cain at mcaain@us.ibm.com.

9 Database Performance

9.1 SQL Performance Tips

The following suggestions apply to any SQL workload including embedded SQL in high level language (HLL) programs, JDBC, ODBC, DB2 Web Query for i, etc.

- Update the partition to the latest IBM i 7.1 or 7.2 DB2 for i level. This ensures that most or all of the SQL processing will use the newer SQL Query Engine.
- Implement an appropriate indexing strategy based on index advice from the query optimizer and the overall profile of the database. Index advice is available from Visual Explain, DB2 for i catalogs, the SQL plan cache, and the SQL performance monitor.
- Verify that the available “fair share of memory” is large enough to ensure efficient query implementation. This value is calculated by the optimizer based on the size of the memory pool, the number of active jobs, and sometimes by the configured activity level depending on the DB2 for i level.
- Ensure that the optimization goal is consistent with the intended use of the query (*ALLIO, *FIRSTIO).
- For environments dominated by short running queries, determine if large numbers of full opens and/or access plan rebuilds are impacting performance.
- Consider selectively enabling query DB2 SMP (5770SS1 Product option 26 DB2 Symmetric Multiprocessing) to allow for parallel query execution.

The following apply to applications which use an explicit connection model such as JDBC, ODBC, and CLI:

- Review the prestart job entries for QZDASOINIT and QSQSRVR and make appropriate adjustments (based on DSPACTPJ command).
- Ensure you are using connection pooling. Review the QHST log or run database monitor to determine if there is a problem.

9.2 Improving the performance of programs that utilize native database access

See the chapter [RPG/COBOL and Native I/O](#)

9.3 Take advantage of performance improvements in DB2 for i

Performance critical SQL language procedures, functions and triggers should be rebuilt periodically because DB2 for i continues to improve the code generation of such code bodies. See this link for more information:

[Improved code generation for SQL procedures, functions, & triggers](#)

9.4 More information about the latest DB2 for i performance improvements

Keep up to date on technology updates. DB2 for i Performance Enhancements can be found at:

[Recent Performance Enhancements -- DB2 for i Technology Updates](#)

IBM Power Systems Performance

9.5 Leverage Database Performance Tools

IBM i provides several integrated tools to collect and visualize database specific performance information. They can help you identify and tune performance problem areas. Key tools available include:

- SQL Plan Cache - Contains a wealth of information about SQE queries being run through the database. It is continuously collecting information and provides a “moving picture” of performance. Its contents are viewable through the Navigator GUI interfaces.

Last Time Run	Most Expensive Time (sec)	Total Processing Time (sec)	Total Times Run	Average Processing Time (sec)	Statement	Job Name	Job User	Job Number	Adjusted A
3/23/17 9:15:11 AM	0.0111	2.0816	91513	0.0001	SELECT SERIAL, COMMAND, SENDER FROM QUSRSYS.Q QZDASOIN QUSER			001331	0.0001
3/23/17 9:15:01 AM	0.0113	1.6619	69650	0.0001	SELECT SERIAL, COMMAND, SENDER FROM QUSRSYS.Q QZDASOIN QUSER			001331	0.0001
3/24/16 1:57:46 AM	0.0001	1.3815	14281	0.0001	Non SQL Query QUSRSYS/QASXSYPMP.QASXSYPMP, QUSF QZRCRSRV QUSER			003036	0.0001
3/23/17 9:23:13 AM	0.0001	0.4370	5231	0.0001	SELECT RDNAME, RSSYSNAME, RSNETID, RSNODEPCY, Q1ACPDST QBRMS			001206	0.0001
3/15/17 12:00:08 AM	0.4198	0.4198	1	0.4198	Non SQL Query QPFRTEMP/QAPMJOB.L073100216 QYPSFRH QSYS			001426	0.4198
3/23/17 9:15:25 AM	0.0000	0.3061	30045	0.0001	SELECT ID,Event_datetime,METRIC,OBSOLETE,VALUE FI QZDASOIN QUSER			001331	0.0001
3/23/17 8:57:55 AM	0.0000	0.2520	23775	0.0001	SELECT ID,Event_datetime,METRIC,OBSOLETE,VALUE FI QZDASOIN QUSER			001331	0.0001
3/15/17 12:00:18 AM	0.0181	0.2376	28	0.0084	INSERT INTO QPFRHIST/QAPMHDJOBM SELECT MAX(INT QSQSRVR QUSER			001291	0.0084
3/21/17 5:25:52 AM	0.0083	0.2359	8653	0.0001	SELECT SERIAL, COMMAND, SENDER FROM QUSRSYS.Q QZDASOIN QUSER			001310	0.0001
3/23/17 9:23:13 AM	0.0000	0.1822	5233	0.0001	DELETE FROM QUSRBRM.QA1ANET2 WHERE RMTSYS IN Q1ACPDST QBRMS			001206	0.0001
3/24/16 1:57:46 AM	0.0001	0.1776	1822	0.0001	Non SQL Query QUSRSYS/QASXSYPMP.QASXSYPMP, QUSF QZRCRSRV QUSER			003036	0.0001
3/15/17 12:00:19 AM	0.0180	0.1734	14	0.0123	INSERT INTO QPFRHIST/QAPMHDJOBM SELECT MAX(INT QSQSRVR QUSER			001291	0.0123
3/15/17 12:00:19 AM	0.0121	0.1521	13	0.0117	INSERT INTO QPFRHIST/QAPMHDJOBM SELECT MAX(INT QSQSRVR QUSER			001291	0.0117
3/15/17 12:00:19 AM	0.0120	0.1510	13	0.0116	INSERT INTO QPFRHIST/QAPMHDJOBM SELECT MAX(INT QSQSRVR QUSER			001291	0.0116
3/23/17 9:23:13 AM	0.0000	0.1369	5233	0.0001	INSERT INTO QUSRBRM.QA1A2NET SELECT DISTINCT R Q1ACPDST QBRMS			001206	0.0001
3/23/17 9:17:01 AM	0.0000	0.1358	6401	0.0001	UPDATE QUSRSYS.QINAVMNTSVR SET STATUS=?, UPD QZDASOIN QUSER			001331	0.0001
3/23/17 9:23:13 AM	0.0000	0.1182	5241	0.0001	SELECT COUNT(*) FROM QUSRBRM.QA1ANET2 WHERE I Q1ACPDST QBRMS			001206	0.0001
3/23/17 8:58:01 AM	0.0000	0.1102	4973	0.0001	UPDATE QUSRSYS.QINAVMNTSVR SET STATUS=?, UPD QZDASOIN QUSER			001331	0.0001
3/23/17 9:23:13 AM	0.0000	0.1096	5233	0.0001	SELECT * FROM QUSRBRM.QA1ANET2 WHERE (OBJ = ? Q1ACPDST QBRMS			001206	0.0001
3/23/17 9:23:13 AM	0.0000	0.1078	5235	0.0001	DELETE FROM QUSRBRM.QA1A2NET WITH NC Q1ACPDST QBRMS			001206	0.0001

For additional information: [IBM i Knowledge Center: SQL Plan Cache](#)

- SQL Database Monitor – This monitor gathers real-time information about SQL requests and non-SQL queries, such as OPNQRY. It has details about optimization and runtime behavior. This monitor must be started and stopped. Its contents are viewable through the Navigator GUI interfaces.

Start Time	Most Expensive Time	Total Processing Time	Total Times Run	Average Processing Time	Statement	Job Name	Job User	Job Number	Optimization Time
3/24/16 9:29:10 AM	0.5339	0.8995	1	0.8995	SELECT COUNT(*) FROM (SELECT JBNAME, JBUSER, JBNBR, CASE I QZDASOIN QUSER			003054	0.2710
3/24/16 9:29:11 AM	0.7464	0.7464	1	0.7464	SELECT JBNAME, JBUSER, JBNBR, CASE WHEN SUM(TIME01) - SUM QZDASOIN QUSER			003054	0.2570
3/24/16 9:29:36 AM	0.2519	0.2596	1	0.2596	SELECT COUNT(*) FROM (SELECT CSDTETIM, CASE WHEN SUM(TIM QZDASOIN QUSER			003054	0.1900
3/24/16 9:29:36 AM	0.2153	0.2153	1	0.2153	SELECT CSDTETIM, CASE WHEN SUM(TIME01) - MAX(JBCPU * ?) < QZDASOIN QUSER			003054	0.1650
3/24/16 9:30:09 AM	0.0980	0.1103	1	0.1103	SELECT COUNT(*) FROM (SELECT QSY.CSDTETIM AS CSDTETIM, Q QZDASOIN QUSER			003055	0.0480
3/24/16 9:30:10 AM	0.0943	0.0955	1	0.0955	SELECT COUNT(*) FROM (SELECT QJS.CSDTETIM AS CSDTETIM, FL QZDASOIN QUSER			003055	0.0220
3/24/16 9:30:09 AM	0.0794	0.0794	1	0.0794	SELECT QSY.CSDTETIM AS CSDTETIM, QSY.PARTCPUUTIL, QDK.PC QZDASOIN QUSER			003055	0.0520
3/24/16 9:28:08 AM	0.0670	0.0670	1	0.0670	DELETE FROM QUSRBRM.QA1ANET2 WHERE RMTSYS NOT IN (SELE Q1ACPDST QBRMS			002986	0.1380
3/24/16 9:29:01 AM	0.0664	0.0664	1	0.0664	SELECT QSY.INTNUM AS INTNUM, QSY.CSDTETIM AS CSDTETIM, M QZDASOIN QUSER			003054	0.0160
3/24/16 9:30:10 AM	0.0602	0.0602	1	0.0602	SELECT QJS.CSDTETIM AS CSDTETIM, FLTRATE, TOTPDIORATE, TC QZDASOIN QUSER			003055	0.0210
3/24/16 9:29:48 AM	0.0380	0.0393	1	0.0393	SELECT QSY.INTNUM AS INTNUM, QSY.CSDTETIM AS CSDTETIM, M QZDASOIN QUSER			003054	0.0220
3/24/16 9:28:40 AM	0.0357	0.0365	1	0.0365	SELECT COUNT(*) FROM (SELECT QSY.INTNUM, QSY.CSDTETIM AS QZDASOIN QUSER			003054	0.0120
3/24/16 9:29:48 AM	0.0330	0.0338	1	0.0338	SELECT COUNT(*) FROM (SELECT QSY.INTNUM AS INTNUM, QSY.CS QZDASOIN QUSER			003054	0.0120
3/24/16 9:28:40 AM	0.0329	0.0329	1	0.0329	SELECT QSY.INTNUM, QSY.CSDTETIM AS CSDTETIM, MAX(PCTSYSZ QZDASOIN QUSER			003054	0.0150
3/24/16 9:28:08 AM	0.0233	0.0233	1	0.0233	INSERT INTO QUSRBRM.QA1A2NET SELECT DISTINCT RMTSYS AS I Q1ACPDST QBRMS			002986	0.0280
3/24/16 9:29:01 AM	0.0207	0.0216	1	0.0216	SELECT COUNT(*) FROM (SELECT QSY.INTNUM AS INTNUM, QSY.CS QZDASOIN QUSER			003054	0.0100
3/24/16 9:28:33 AM	0.0171	0.0176	1	0.0176	SELECT NAME_00001 AS MONITOR_NAME, SAVE_00001 AS DATA_ QZDASOIN QUSER			003054	0.0030
3/24/16 9:28:33 AM	0.0083	0.0168	1	0.0168	SELECT NAME_00001 AS MONITOR_NAME, SAVE_00001 AS DATA_ QZDASOIN QUSER			003054	0.0040
3/24/16 9:28:08 AM	0.0159	0.0166	1	0.0166	SELECT RDNAME, RSSYSNAME, RSNETID, RSNODEPCY, RDRPTPCY, Q1ACPDST QBRMS			002986	0.2830
3/24/16 9:28:02 AM	0.0139	0.0161	7	0.0023	SELECT ID,Event_datetime,METRIC,OBSOLETE,VALUE FROM QINAVI QZDASOIN QUSER			003031	

IBM Power Systems Performance

For additional information: [IBM i Knowledge Center: Database Monitor](#)

- **Index Advisor** – This feature records statistics on a partition’s indexing needs. Each time an SQL statement is executed, the Index Advisor records any indexes suggested by the query optimizer to possibly improve performance. This information is automatically recorded and can be viewed in Navigator GUI interfaces.

Table for Which Index was Advised	Schema	System Schema	System Name	Partition	Keys Advised	Leading Keys Order Independent	Advised Index Type	Last Advised for Query Use
QINAVMNTCMD	QUSRSYS	QUSRSYS	QINAV00004	For all partitions	RECEIVER, RESULT	RECEIVER, RESULT	Binary Radix	3/24/16 9:44:01 AM
QINAVMNTTRG	QUSRSYS	QUSRSYS	QINAVMNTTRG	For all partitions	OBSOLETE	OBSOLETE	Binary Radix	3/24/16 10:46:25 AM
QAPMCCCNBTB	QUSRSYS	QUSRSYS	QAPMCCCNBTB	For all partitions	CCSTATUS, CCCLNFMT, CCSTRDT	CCSTATUS, CCCLNFMT	Binary Radix	3/24/16 9:44:10 AM
QINAVMNTSVR	QUSRSYS	QUSRSYS	QINAV00005	For all partitions	SERVICE_NAME	SERVICE_NAME	Binary Radix	3/24/16 10:03:46 AM
QINAVMNTTRG	QUSRSYS	QUSRSYS	QINAVMNTTRG	For all partitions	OBSOLETE	OBSOLETE	Binary Radix	3/24/16 8:26:55 AM
QINAVMNTCMD	QUSRSYS	QUSRSYS	QINAV00004	For all partitions	RECEIVER, RESULT	RECEIVER, RESULT	Binary Radix	11/12/15 4:47:49 PM
QAPMCCCNBTB	QUSRSYS	QUSRSYS	QAPMCCCNBTB	For all partitions	CCCLNFMT, CCLB, CCSTRDT, CCCNAME	CCCLNFMT, CCLB, CCSTRDT, CCCNAME	Binary Radix	2/29/16 4:58:10 PM
QATOCSTART	QUSRSYS	QUSRSYS	QATOCSTART	For all partitions	EXTENDCMD	EXTENDCMD	Binary Radix	11/10/15 8:07:27 AM
QAUGDBPMD2	QUSRSYS	QUSRSYS	QAUGDBPMD2	For all partitions	"Free Storage Method", "Memory Handle"	"Free Storage Method"	Binary Radix	3/24/16 10:43:41 AM
QASZRAIRD	QUSRSYS	QUSRSYS	QASZRAIRD	For all partitions	COMPID, FULLPATH	COMPID, FULLPATH	Binary Radix	9/11/13 8:44:55 AM
QAUGDBPMD2	QUSRSYS	QUSRSYS	QAUGDBPMD2	For all partitions	"Memory Handle", "Free Storage Method", "Free Storage Method"	"Memory Handle", "Free Storage Method"	Binary Radix	3/24/16 10:43:41 AM
QAUGDBPMD2	QUSRSYS	QUSRSYS	QAUGDBPMD2	For all partitions	"Free Storage Method", "Memory Handle", "Memory Handle"	"Free Storage Method", "Memory Handle"	Binary Radix	11/12/15 10:29:54 AM
QAUGDBPMD2	QUSRSYS	QUSRSYS	QAUGDBPMD2	For all partitions	FULLPATH, COMPID	FULLPATH, COMPID	Binary Radix	4/7/15 3:04:38 PM
QAUGDBPMD2	QUSRSYS	QUSRSYS	QAUGDBPMD2	For all partitions	"Status", "Name"	"Status", "Name"	Binary Radix	12/12/14 1:23:58 PM
QAUGDBPMD2	QUSRSYS	QUSRSYS	QAUGDBPMD2	For all partitions	"Memory Handle"	"Memory Handle"	Binary Radix	11/12/15 9:24:30 AM
QAPMCCCNAC	QUSRSYS	QUSRSYS	QAPMCCCNAC	For all partitions	CCACTTYPE	CCACTTYPE	Binary Radix	11/12/15 8:10:40 AM
QASZRAIRC	QUSRSYS	QUSRSYS	QASZRAIRC	For all partitions	VENDOR, VERSION, PRODDNAME, COMPNAME	VENDOR, VERSION, PRODDNAME, COMPNAME	Binary Radix	2/12/15 8:19:26 AM
QAUGDBPMD2	QUSRSYS	QUSRSYS	QAUGDBPMD2	For all partitions	"Memory Handle", "Free Storage Method", "Free Storage Method"	"Memory Handle", "Free Storage Method", "Free Storage Method"	Binary Radix	12/12/14 1:23:58 PM
QINAVMNTSPEC	QUSRSYS	QUSRSYS	QINAV00003	For all partitions	TYPE, CREATED_DATE	TYPE	Binary Radix	3/20/16 1:34:55 PM
QASZRAIRC	QUSRSYS	QUSRSYS	QASZRAIRC	For all partitions	VENDOR, VERSION, COMPNAME, PRODDNAME	VENDOR, VERSION, COMPNAME, PRODDNAME	Binary Radix	4/7/15 3:04:38 PM
QINAVMNTCMD	QUSRSYS	QUSRSYS	QINAV00004	For all partitions	SERIAL	SERIAL	Binary Radix	3/20/16 1:56:26 PM
QAPMCCCNAC	QUSRSYS	QUSRSYS	QAPMCCCNAC	For all partitions	CCACTTYPE, CCACTION, CCCLNFMT	CCACTTYPE, CCACTION	Binary Radix	11/11/15 2:20:16 PM
QINAVMNTSVR	QUSRSYS	QUSRSYS	QINAV00002	For all partitions	MONITOR_ID	MONITOR_ID	Binary Radix	3/20/16 1:55:53 PM
QAIDRWNM2	QUSRSYS	QUSRSYS	QAIDRWNM2	For all partitions	STARTTIME	STARTTIME	Binary Radix	6/18/15 3:25:20 AM
QAIDRCNCL1	QUSRSYS	QUSRSYS	QAIDRCNCL1	For all partitions	SYSNAME, COLTYPE	SYSNAME	Binary Radix	3/19/16 5:04:31 PM
QAIDRCNCL1	QUSRSYS	QUSRSYS	QAIDRCNCL1	For all partitions	COLTYPE, LIBNAME	COLTYPE, LIBNAME	Binary Radix	5/8/14 5:25:47 PM
QAUGDBPMD	QUSRSYS	QUSRSYS	QAUGDBPMD	For all partitions	"Status", "Name"	"Status"	Binary Radix	11/12/15 10:28:51 AM
QAUGDBPMD2	QUSRSYS	QUSRSYS	QAUGDBPMD2	For all partitions	"Status", "Name"	"Status"	Binary Radix	11/12/15 10:28:51 AM
QAPMCCCNBTB	QUSRSYS	QUSRSYS	QAPMCCCNBTB	For all partitions	CCCLNFMT, CCLB	CCCLNFMT, CCLB	Binary Radix	11/12/15 12:08:42 PM
QAPMCCCNAT	QUSRSYS	QUSRSYS	QAPMCCCNAT	For all partitions	CCCLNFMT, CCLB	CCCLNFMT, CCLB	Binary Radix	11/12/15 12:08:42 PM

For additional information: [IBM i Knowledge Center: Index Advisor](#)

- **Visual Explain** – Provides a method of identifying and analyzing database performance problems by graphically displaying the implementation of an SQL statement. Currently, its contents are only viewable in System i Navigator.

The Visual Explain window displays a query execution plan for the query: `UHOBK1.Q.UHOBK1_QAIDR0000B_INTNUM_00001`. The plan starts with an Index Probe (1754) leading to an RRN Scan (258,517). This is followed by a Table Probe (113,004) and a Temporary Hash Table. The plan then branches into two paths: one leading to a Hash Probe (9,020) and another to a Table Scan (179,202). The Hash Probe path continues through Fetch N Rows, Nested Loop Join, and another RRN Scan (200,428) to a Table Probe (200,228) and a Hash Probe (200,428). The Table Scan path goes through a Temporary Hash Table, Hash Scan (179,202), and another Temporary Hash Table. Both paths converge at a Nested Loop Join (200,428) which leads to a Hash Probe (179,202) and a final Hash Scan (179,202). The plan concludes with an Index Probe (179,202) and a Hash Probe (179,202).

Performance Statistics:

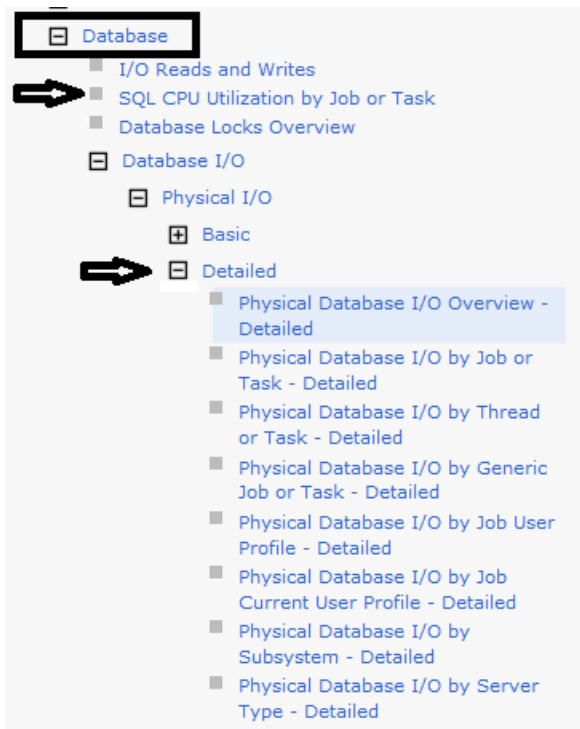
Attribute	Value
Query Engine Used	SOE
Time Information	
Timestamp for Creation of Monit...	2016-03-23-22 25:07.105156
Statement Start Timestamp	2016-03-23-22 25:07.105156
Statement End Timestamp	2016-03-23-22 25:07.105156
Total Estimated Run Time (ms)	6,681
Actual Runtime Information	
Optimization Time (ms)	262
Run Time (ms)	4,108E7
Statement Open Time (ms)	Not Available
Statement Fetch Time (ms)	4,108E7
Statement Close Time (ms)	Not Available
Rows Fetched	0
Total Times Query Was Run	3
Total Time For All Runs (ms)	1,232E8
CPU Time	1,704E7
Synchronous Database Reads	34,078
Asynchronous Database Reads	77,300
Page Faults	34,120
Temporary Storage Used (MB)	3,074E18
Total Times Temporary Results ...	0
Reason Temporary Result Was ...	No Existing Temporary Result...
Information about SQL stateme...	
Statement Number	94,554
Statement Function	Select
Statement Operation	Open
Statement Type	Dynamic
Statement Name	STMT0004
Statement Outcome	Successful
SQL Return Code	0
SQLSTATE	00000
Cursor Name	SQL_CUR02DA3030
Program or Package Name	
Program or Package Library	
Statement Text	select count(*) from (select c...
Host Variable Values	*, System tasks, 1, 60, 'second...
Additional information about SO...	
CLOSECUR Value	Any Time
ALNCPDIA Value	No
Pseudo Open	No
Pseudo Close	No

IBM Power Systems Performance

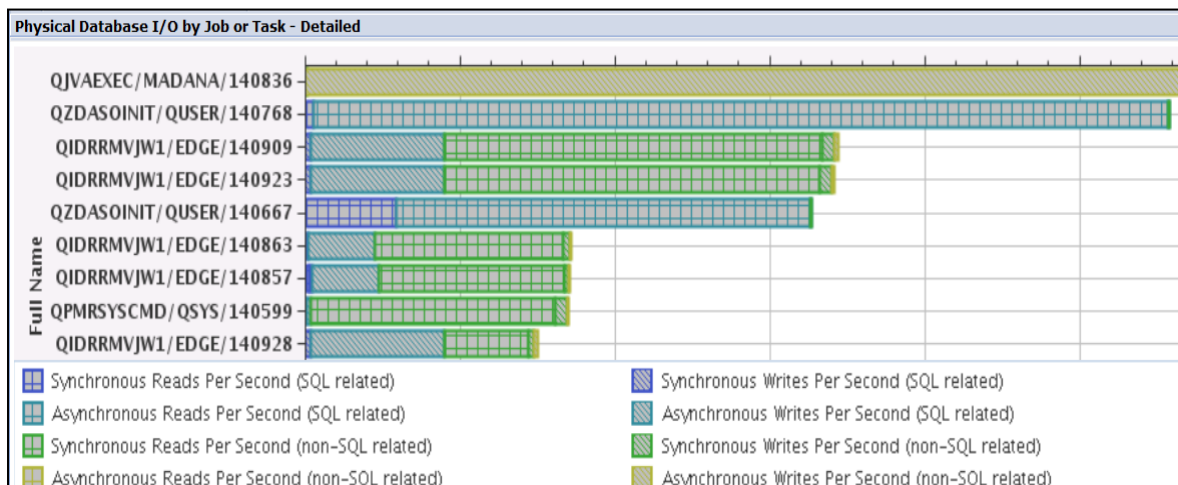
For additional information: [IBM i Knowledge Center: Visual Explain](#)

- Collection Services – Many database and SQL related metrics are now being collected by Collection Services (Collection Services should be automatically running on your partition 24x7). Beginning in 7.1 (with PTF SI47594 and following special instructions), several job level SQL metrics are captured. New metrics include:
 - SQL clock time
 - SQL unscaled / scaled CPU time
 - SQL synchronous / asynchronous database reads
 - SQL synchronous / asynchronous non-database reads
 - SQL synchronous / asynchronous database writes
 - SQL synchronous / asynchronous non-database writes
 - Number of high level SQL statements per thread

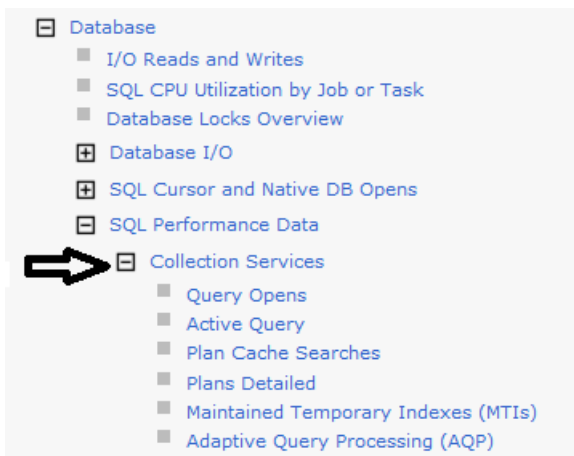
These metrics provide information regarding how much resource usage (such as CPU and I/O) was due to SQL work being performed by the thread. This data can be visualized in PDI, under the Database category:



The following is an example chart of Detailed Physical Database I/O by Job or task showing the amount of reads/writes per second that are SQL related versus non-SQL related activities :

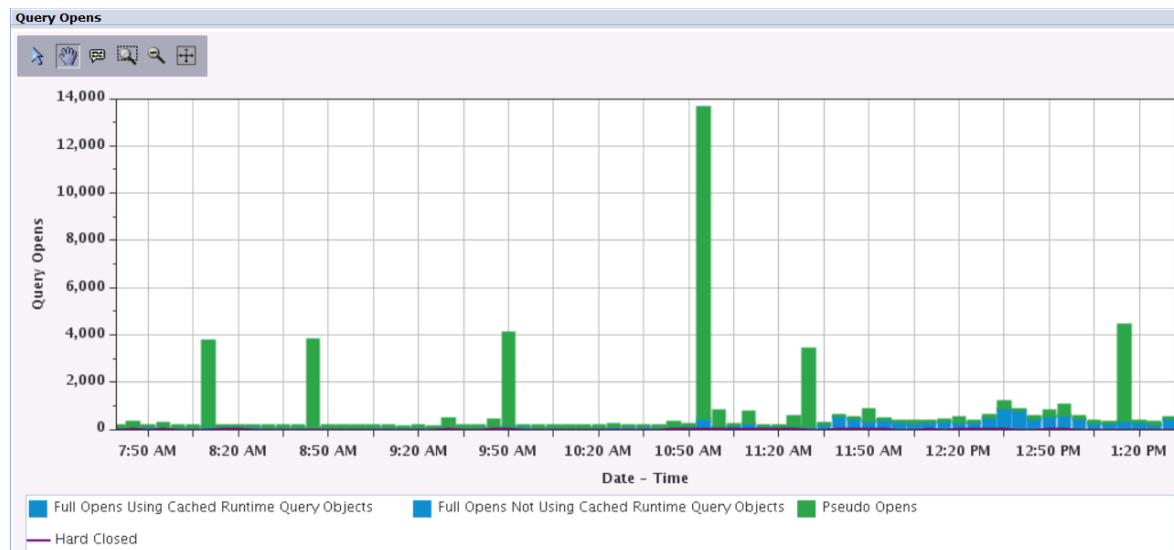


Starting with IBM i 7.2, Collection Services has included a new SQL category; this SQL category includes SQL Plan Cache data. This category is part of the standard collection category and this data is collected by default. This new data can be viewed in PDI under Database → SQL Performance Data → Collection Services:



The following is an example Query Opens chart showing number of Opens being done across the Collection Services time intervals:

IBM Power Systems Performance



There are many other Database and SQL charts now available. See the following for more information:

developerWorks

- [Integration with Database](#)
- [Job Level SQL metrics](#)

Blogs

- [SQL CPU Utilization](#)
- [Job Level SQL Metrics in Collection Services](#)
- [Viewing Job Level SQL Metrics with Performance Data Investigator](#)
- [Collecting Database Performance Data With IBM i Performance Data Investigator](#)
- [Visualizing Database Performance Data With the Performance Data Investigator](#)

9.6 More information on DB2 for i performance and support

The DB2 for i homepage can be found at:

<http://www-03.ibm.com/systems/i/software/db2>

Additional DB2 for i performance information can be found at:

<http://www-03.ibm.com/systems/i/software/db2/db2tips.html#performance>

The IBM i Knowledge Center has a section on SQL performance:

[SQL Performance](#)

There are many more links related to database performance in the [References](#) chapter.

10 RPG/COBOL and Native I/O

10.1 Introduction

This section discusses methods for improving the performance of applications written in RPG or COBOL and those programs that are accessing data using native IO operations.

10.2 CPU performance tips

RPG and COBOL programs are optimized to run on IBM i with every release and will adopt the latest processor enhancements when compiled or when re-translated as required, for example when moving from IBM i 5.4 to 6.1 or 7.1.

However, additional optimization can be done over and above what the compilers and the translator provide in order to improve performance in terms of runtime or CPU. Some of the following optimization techniques will trade off better optimization with the capability to debug the code, so be aware when deciding to use program optimization. It is generally good practice to select a few highly used programs with intense use of CPU cycles and perform optimization and when debugging is not required any longer. Some of these performance optimization techniques can be very significant and worth the effort for highly used programs in the interactive or batch environment.

10.2.1 *Compiler Options*

Optimize the use of processors by specifying the OPTIMIZE parameter on the CRTRPGMOD and CRTBNDRPG command, e.g. OPTIMIZE(*BASIC or *FULL). You can also use the commands CHGMOD, CHGPGM or CHGSRVPGM and the parameter OPTIMIZE(*YES) to optimize instructions being executed within your program. For more information see:

[Create Bound RPG Program](#)

Optimize the use of program arguments by using the parameter ARGOPT(*YES) on the CRTPGM and CRTSRVPGM commands. For more information see:

[Improve Performance with Argument Optimization](#)

Control program activation by the activation keyword (*DEFER) with the bind service program parameter on the CRTPGM, CRTSRVPGM, UPDPGM and UPDSRVPGM commands. For more information see:

[Activate Your Programs On Demand](#)

10.2.2 *Profiling*

Optimize your ILE RPG or COBOL programs by profiling and collecting procedure execution information and applying them to optimize the program structures and instruction flows. For more information read:

[Find Hot Spots Using Program Profiling](#)

Identifying hot programs (programs which use most of the resources) within your application with Performance Explorer and the PEX definition *STATS. For more information read:

[Using Performance Explorers *STATS and *PROFILE/PGM Functions](#)

IBM Power Systems Performance

Identifying hot statements of programs (actual statements of programs which use most of the resources) within your application with Performance Explorer and the PEX definition *PROFILE. For more information read:

[Using Performance Explorers *STATS and *PROFILE/PGM Functions](#)

10.3 IO performance tips

10.3.1 *General tips*

Use higher blocking for input/output only operations – SEQONLY((*YES #rcds)) >= 128KB. More information on increasing logical page size in DB operations can be found here:

[Sequential-only processing of database files](#)

Avoid open/close of files, use RETRN vs SETON *LR in RPG

[Tips: Run and call IBM i procedures](#)

Eliminate FRCRATIO(1) to prevent every update/write to be forced out to disk

[FRCRATIO parameter](#)

The number of physical I/Os can be significantly reduced by using the SETOBJACC command and pinning a database file or index into a private memory pool which is not used by anything else. Read more at:

[SETOBJACC/CLRPOOL Commands](#)

10.3.2 *Database modernization*

For applications which are dominated by database processing, performance can often be improved by converting existing high level language programs from native IO (record level access) to SQL set base processing. IBM has a well-established process for this kind of database modernization which takes advantage of the SQL query optimizer's advanced capabilities while minimizing the impacts to existing programs.

See the [IBM DB2 for i education](#) website for more information on classes and resources for database processing.

11 C Program Compiler Optimization

C and C++ programs are optimized to run on IBM i with every release and will adopt the latest processor enhancements when compiled or when re-translated, e.g. when going from 5.4 to 6.1 to 7.1. Additional optimization can be done over and above what the compilers and the translator provide in order to improve performance in terms of runtime or CPU use and path length.

Be aware that some of the following optimization techniques trade off improved performance with less capability to debug the code. It is generally a good practice to focus optimization on a few highly used programs with intense use of CPU cycles when debugging is not required any longer. Some of these performance optimization techniques can be very significant and worth the effort for highly used programs in the interactive or batch environment.

11.1 IBM i Architecture – MI Interface

The IBM i Architecture depicted below only allows predefined MI Instructions to go to the lower level of microcode. All user code, including the compilers as well as the operating system itself, is independent from the microcode and hardware layer below. All compiled code will have to get translated in order to get machine level instructions specific to the hardware being run on.

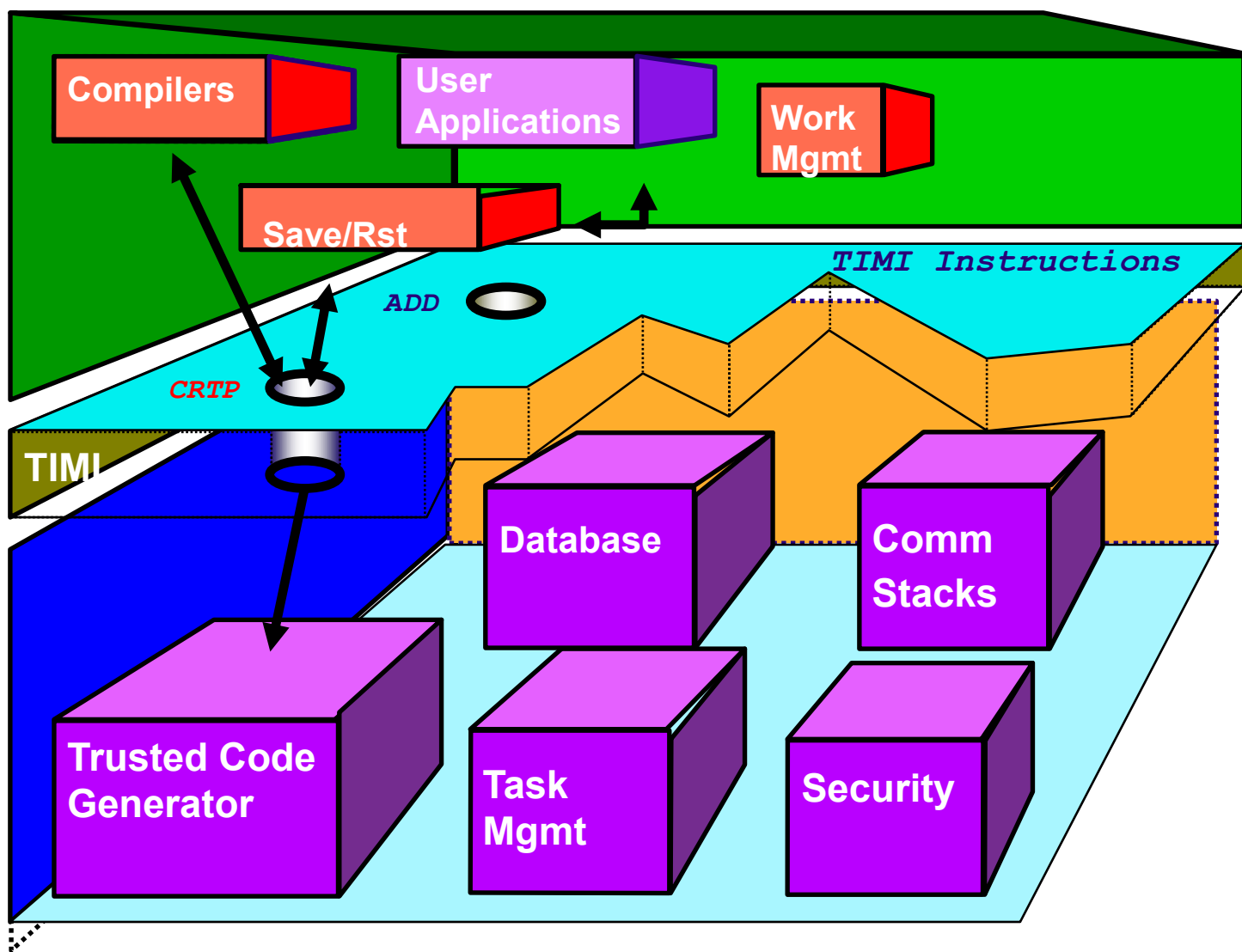


Figure 22 - IBM i Architecture – MI Interface

11.2 IBM i Program Creation

During the compile of any program, including C and C++ programs, you will need to use the CRTPG MI instruction in order to generate machine executable code. This translation step can also be independently performed via the CHGPGM, CHGMOD, etc. commands.

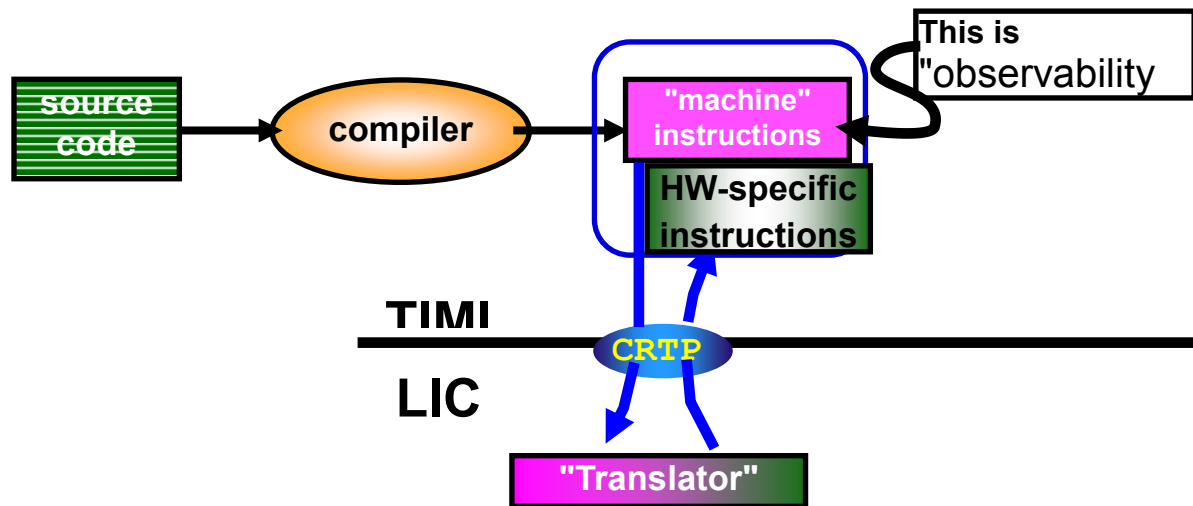


Figure 23 - IBM i Program Creation

Key notes:

- Programs get compiled to an intermediate level of code - MI
- The IBM i architecture incorporates "translation" under the TIMI
- The Translator is necessarily hardware-specific

11.3 Compiler option - OPTIMIZE

Optimize the use of CPU by specifying the OPTIMIZE parameter on the CRTCMOD and CRTBNDC command, e.g. OPTIMIZE(20, 30 and 40).

Optimization may rearrange or eliminate some statements altogether. Consequently, field values presented by the debugger, as well as breakpoints and step locations, may be inaccurate.

CRTCMOD and CRTBNDC commands

OPTIMIZE(10) is the **default value**. The compiler performs no optimization on the code. This option allows you to debug the program accurately, with the debugger presenting correct current field values.

OPTIMIZE(20) performs **some optimization** on the compiled code. The debugger will let you display variables, but the displayed value may not be the current value. The debugger will also allow variable changes, but you may encounter unexpected results if you try to use the changed variables.

IBM Power Systems Performance

OPTIMIZE(30) generates more efficient code than level 20. More optimizations are performed in addition to those performed at level 20, and the compile process takes longer. The debugger will let you see (but not change) field values, but the debugger may not show you the correct current field values.

OPTIMIZE(40) generates the most efficient code. All optimizations done at level 30 are performed on the generated code. In addition, code is eliminated from procedure prologue and epilogue routines that enable instruction trace and call trace system functions. Eliminating this code enables the creation of leaf procedures. A leaf procedure is a procedure that does not require an invocation frame to be stacked. Procedure call performance to a leaf procedure is significantly faster than to a normal procedure.

CHGMOD, CHGPGM or CHGSRVPGM commands

You can also use the commands CHGMOD, CHGPGM or CHGSRVPGM and the parameter OPTIMIZE(*YES) to optimize instructions being executed within your program. The DSPMOD, DSPPGM, and DSPSRVPGM commands will show you the current level of optimization for an object.

You can change optimization levels with the CHGMOD, CHGPGM, or CHGSRVPGM commands; these commands support the levels already discussed, but also add other options:

OPTIMIZE(*NONE|*NO|10) -- These options are equivalent, and are discussed above. OPTIMIZE(*NO) is used only by the CHGPGM command.

OPTIMIZE(*BASIC|20) -- These options are equivalent, and are discussed above.

OPTIMIZE(*FULL|30) -- These options are equivalent, and are discussed above.

OPTIMIZE(*YES|40) -- This is the highest possible optimization level. In addition to all level 30 optimization, level 40 performs optimization that reduces the capability to provide extensive call and instruction tracing.

OPTIMIZE(*YES) is used only by the CHGPGM command.

More Information how to use the CRTBNDC command:

[Create Bound C Program \(CRTBNDC\)](#)

11.4 Program profiling

Optimize your ILE C programs by profiling and collecting procedure execution information and applying that information to optimize the program structures and instruction flows. This is an advanced optimization technique that reorders procedures, or code within procedures, in ILE programs and service programs based on statistical data gathered while running the program. This reordering can improve instruction cache utilization and reduce paging required by the program, thereby improving performance.

Note: The semantic behavior of the program is not affected by program profiling.

The performance improvement realized by program profiling depends on the type of application and you can expect more improvement from programs that spend the majority of time in the application code itself, rather than spending time in the operating system or doing input/output processing.

The performance of program code produced when applying profile data depends upon the

IBM Power Systems Performance

optimizing translator correctly identifying the most important portions of the program during typical use. Therefore, it is important to gather profile data while performing the tasks that will be performed by end users, and using input data that is similar to that expected in the environment in which the program will be run.

Note: Program profiling is available only for ILE programs and service programs that are compiled using optimization level 30 or 40. Because of the optimization requirements, you should fully debug your programs before using program profiling.

To enable the program to collect profiling data:

- Compile your ILE program(s) using the PRFDTA(*COL) option.
- Start the program profiling collection on the system with the Start Program Profiling (STRPGMPRF) command.
- Collect profiling data by running the program through its high-use code paths. Because program profiling uses statistical data gathered while running the program to perform these optimizations, it is critical that this data be collected over typical uses of your application.
- End the program profiling collection on the system with the End Program Profiling (ENDPGMPRF) command.
- Apply the collected profiling data to the program by requesting that code be reordered for optimal performance based on the collected profiling data using the PRFDTA(*APYALL) option.

More Information how to find program hot spots can be found here:

[Find Hot Spots Using Program Profiling](#)

11.5 Advanced Argument Optimization

Advanced argument optimization is a cross-module optimization that is used to improve the performance of programs that contain frequently run procedure calls, including C++ applications that make mostly non-virtual method calls. Improved runtime performance is achieved by enabling the translator and binder to use the most efficient mechanisms to pass parameters and return results between procedures that are called within a program or service program.

The Argument optimization (ARGOPT) parameter, with *YES and *NO as possible values, is available on the CRTPGM and CRTSRVPGM commands to support advanced argument optimization. Specifying ARGOPT(*YES) causes the program or service program to be created with advanced argument optimization. The default is *NO.

Note: For programs that consist of hundreds or thousands of modules, creation time can be significantly longer using this option.

More Information how to perform argument optimization, please read the following article:

[Improve Performance with Argument Optimization](#)

11.6 Interprocedural analysis (IPA)

At compile time, the optimizing translator performs both intraprocedural and interprocedural analysis.

Intraprocedural analysis is a mechanism for performing optimization for each [function](#)

IBM Power Systems Performance

[within a compilation unit](#), using only the information available for that function and compilation unit.

Interprocedural analysis is a mechanism for performing optimization [across function boundaries](#). The optimizing translator performs interprocedural analysis, but only within a compilation unit.

Interprocedural analysis that is performed by the IPA compiler option improves on the limited interprocedural analysis described above. When you run interprocedural analysis through the IPA option, IPA performs optimizations across the entire program. It also performs optimizations not otherwise available at compile time with the optimizing translator.

In order to optimize your program or service program with the Inter Procedural Analysis function, make sure that:

- all modules have the parameter MODCRTOPT(*KEEPILDATA) specified and are compiled with an optimization level of 20 or higher
- and the parameter IPA(*YES) is specified on the CRTPGM or CRTSRVPGM command

More information on additional optimization with IPA can be found in the IBM Knowledge Center at:

[Interprocedural analysis \(IPA\)](#)

12 Java and WebSphere

12.1 Introduction

This chapter covers best practices for Java and WebSphere Application Server performance. Most of the Java questions apply to WebSphere applications.

A note on Classic vs. IBM Technology for Java (IT) JVM:

This chapter does not contain information about the Classic JVM. Starting with IBM i 6.1 customers can run both the 32 bit and 64 bit versions of the IT JVM. On IBM i 7.1 only the IT JVM is available. The only time the Classic JVM should be used is when it is required by other products such as older versions of WebSphere Application Server or WebSphere Commerce.

12.2 Does it matter if I use the 32-bit versus 64-bit JVM?

For best performance, use the 32-bit JVM unless the memory requirement of the application requires the larger heap sizes supported by the 64-bit environment. When using the 64 bit JVM, compressed references (-Xcompressedrefs) can be used to reduce memory requirements.

12.3 I'm using an old JDK level and am behind on PTFs, is that okay?

No, for best performance use the most current JDK level you can and apply the latest PTFs.

12.4 How can I enable medium page size support?

Java applications can gain performance by configuring the JVM to use 64K pages. This feature can be enabled by adding the following flag to the Java command options:

```
-Xlp64k
```

Starting with IBM Java 6.0 SR7 64K page size is the default.

12.5 Should I run my JVMs in a separate memory pool?

Yes, JVMs should run in a memory pool configured with enough memory to hold all JVMs at their maximum heap size. WRKSHRPOOL can be used to set the minimum pool size in percent to ensure the pool does not shrink too much if QPFRADJ is on. If there is not enough memory in the pool, the JVMs may become unresponsive due to high page faulting.

12.6 How do I determine the proper GC settings (heap sizes, collection policy, etc.) for my application?

For most customers, the GENCON policy results in the best performance. Other policies and how to set the minimum and maximum size are discussed in this document:

[Best Practices for Sizing and Tuning the Java Heap](#)

Collection Services collects JVM information by default. In Performance Data Investigator there are java heap size charts that allow you to visualize java heap usage system wide and by job. This might be a good starting point to find the job(s) which are consuming the most Java heap.

12.7 How do I analyze JVM dumps and verbose GC output?

Download and install the IBM Support Assistant and install the IBM Monitoring and Diagnostic Tools for Java toolset.

<http://www-01.ibm.com/software/support/isa/>

12.8 How do I tune Java code?

The Java and WebSphere Performance on IBM eServer iSeries Servers Redbook still is a good resource even though it is from 2002. The recommendations specific to the JVM mostly do not apply anymore, but the coding tips and techniques are still valid.

<http://www.redbooks.ibm.com/abstracts/sg246256.html?Open>

12.9 Where can I get more information on Java tuning and debugging?

The IBM developer kit Knowledge Center collections have a wealth of information.

<http://www.ibm.com/developerworks/java/jdk/docs.html>

12.10 Can I use Job Watcher to collect Java information?

By default Job Watcher does not collect Java specific information for IT JVMs. JVM data collection should only be enabled temporarily in Job Watcher when required to debug a problem, due to the high cost of collecting call stacks in the IT JVM, which runs in the PASE environment.

12.11 How can I improve the performance of WebSphere Application Server running on IBM i?

- Use the most recent version of WebSphere available.
 - Turn off JSP reloading in production environments.
 - Use the Fast Response Cache Accelerator (FRCA) for HTTP Server for caching static and dynamic content. Use the Apache HTTP server cache for secure (SSL) static content.
- [Fast Response Cache Accelerator \(FRCA\) for HTTP Server](#)

The WebSphere Application Server Knowledge Center has a good section on tuning WebSphere performance on IBM i:

[WebSphere Tuning Performance](#)

12.12 How do I tune IBM Toolbox for Java performance?

See the IBM i Knowledge Center section on this topic:

[IBM Toolbox for Java Performance](#)

12.13 Where can I find additional information?

In the IBM i Knowledge Center Java Performance section:

[Java Performance for IBM i](#)

13 POWER Systems

13.1 Introduction

This chapter covers best practices for POWER Systems performance.

13.2 Simultaneous Multithreading (SMT) and Intelligent Threads

POWER8 supports Simultaneous Multithreading (SMT) with eight hardware threads, which provides more transaction processing capacity per core. Power hardware has had [SMT support](#) for many years. Initially, it was two hardware threads of execution on a processor core. With POWER7, the number of hardware threads was increased to four. With POWER8, the number of hardware threads was increased to eight.

13.2.1 *Single thread (ST) versus SMT2/SMT4/SMT8*

Although it is not generally recommended for most customers, applications that are single process and single threaded may gain some benefit from running in ST mode.

Multithreaded and/or multi process applications typically benefit more running in higher SMT modes. ST mode may also be beneficial in the case of applications where the number of application threads is smaller than the number of cores assigned to the partition.

Applications that do not scale with a larger number of CPUs may also benefit from running in SMT2 or ST mode instead of SMT4 or SMT8 since lower number of SMT threads means lower number of logical CPUs. This is a partition-wide setting and overall transaction processing capacity may be reduced by changing from the default mode.

The default mode on POWER7 systems is SMT4. The default mode on POWER8 systems running IBM i 7.1 TR8 is SMT4 and POWER8 systems running IBM i 7.2 is SMT8.

For detailed information refer to:

[Under the Hood: Simultaneous Multi-Threading on POWER7 Processors](#)

and

[IBM i 7.2 and IBM POWER8/](#)

13.2.2 *Intelligent Threads Technology*

POWER8, like POWER7 before it, uses Intelligent Threads technology to maximize workload performance regardless of the processor's threading context. For POWER8, the technology has been enhanced to adapt more quickly and with greater efficiency to changes in the workload. If the POWER8 processor is under-committed, meaning fewer hardware threads are dispatched than are available, the core performance is roughly the same independent of threading context. So for example, if one thread is dispatched, performance will be similar in ST, SMT2, SMT4, and SMT8 contexts; if two threads are dispatched, performance will be similar in SMT2, SMT4, and SMT8 contexts; if three or four threads are dispatched, performance will be similar in SMT4 and SMT8 contexts.

From a usability standpoint, Intelligent Threads means that system-level processor threading context adjustments typically aren't necessary in order to maximize workload performance. Highly multi-threaded workloads can benefit from the additional throughput offered by SMT8 technology, but multi-threading isn't necessary for a workload to achieve high performance. It just works!

13.3 Flexible SMT Controls

SMT settings can be adjusted specifically for each partition. While the default processor threading context is suitable for most commercial environments, IBM i offers manual controls that allow the system to be fine-tuned to the specific characteristics of the workload. In general, as the processor threading context is decreased, single-thread performance may be improved at the expense of maximum aggregate throughput. IBM i provides flexible, dynamic system-level processor threading controls. The processor threading contexts available for the partition IPL is determined by the Processor Compatibility Mode (PCM) partition attribute as shown in Table 2. Note that the PCM is established during partition activation.

13.3.1 Processor Compatibility Mode

POWER8 and POWER7 systems can set the Processor Compatibility Mode to change the SMT behavior. Partitions running in POWER6 or POWER6+ compatibility mode can run in ST or SMT2. Partitions running in POWER7 compatibility mode can run in SMT4, SMT2 or ST mode.

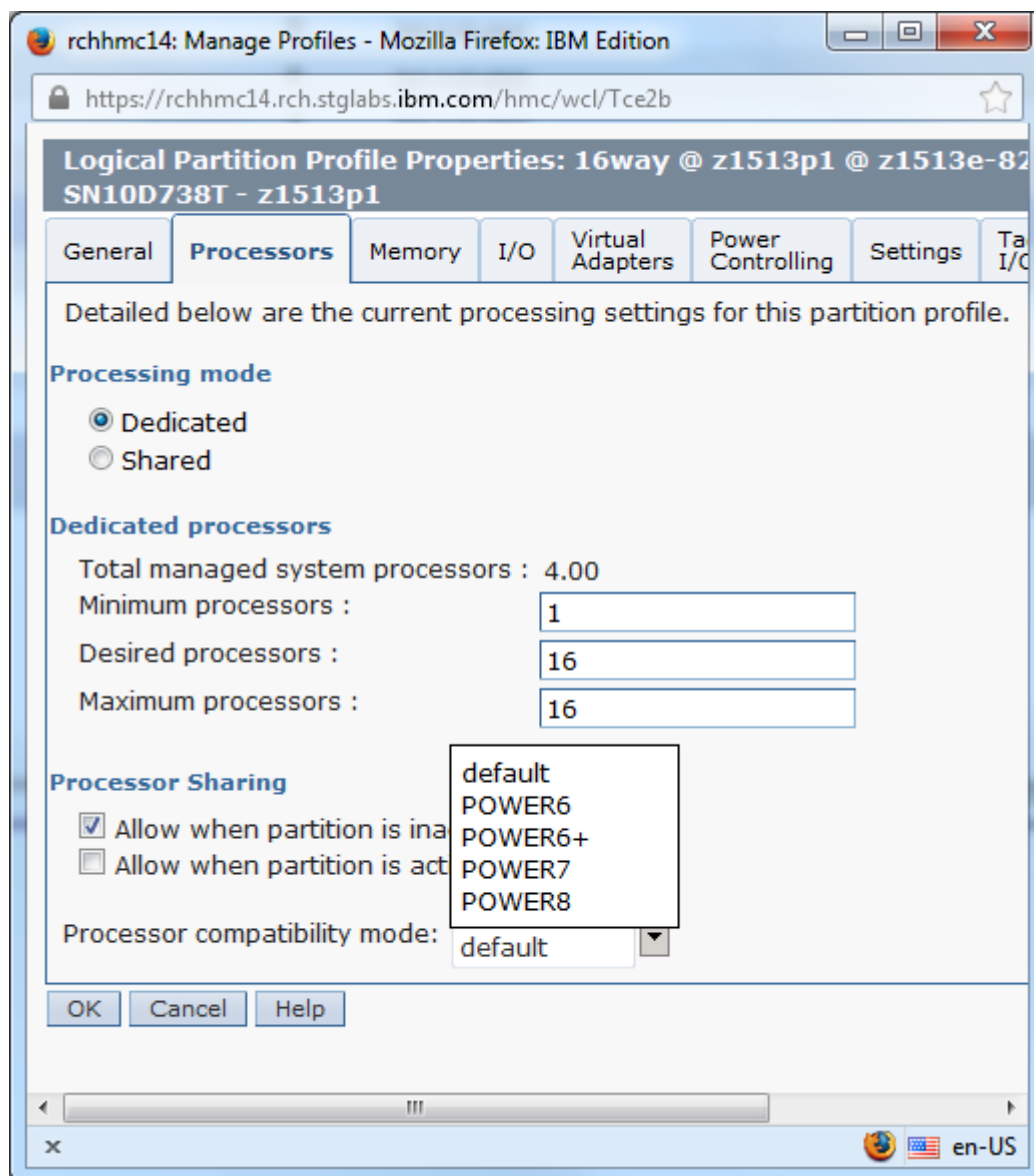
Processor Compatibility Mode	Supported Threading Contexts	Default Thread Context	
		7.1 TR8	7.2
POWER6	ST, SMT2	SMT2	SMT2
POWER6+	ST, SMT2	SMT2	SMT2
POWER7	ST, SMT2, SMT4	SMT4	SMT4
POWER8	ST, SMT2, SMT4, SMT8	SMT4	SMT8

Table 1: IBM i supported and default processor threading contexts

The default thread context is selected by the operating system, but it can be easily changed by the system administrator. For 7.1 TR8, the default thread context is SMT4 in order to optimize the out-of-box experience for customers migrating from POWER7-based (or earlier) servers using 7.1. For 7.2, the default thread context is SMT8.

The choice of SMT4 for POWER8 in IBM i 7.1 TR8 was made to benefit the out-of-box experience for clients migrating from an earlier generation Power System server. Many upgrading to POWER8 will be moving their workloads from a POWER7 server using SMT4, while continuing to use IBM i 7.1 for a period of time. The choice of SMT4 as the default thread context for POWER8 in IBM i 7.1 TR8 offers most of the benefits and performance advantages of POWER8, with the familiarity and continuity of SMT4.

Compatibility mode can be changed using the Hardware Management Console (HMC).



13.3.2 *QPRCMLTTSK System Value*

You can disable or enable the SMT behavior for each partition with the [Processor multitasking \(QPRCMLTTSK\) system value](#). The default for this system value is “system controlled,” which means the operating system determines the optimal setting. For POWER7 systems, this is dynamic switching with four hardware threads. For POWER8 systems, this is dynamic switching with eight hardware threads.

You can explicitly turn off SMT support and always run the cores in a single-threaded (ST) mode by setting QPRCMLTTSK to *OFF. In general, the default setting will be the best for most applications.

Switching to and from single-thread (ST) context may be accomplished using the IBM i processor multi-tasking mode system value, QPRCMLTTSK. QPRCMLTTSK changes are effective immediately and persist across system IPL.

Supported QPRCMLTTSK values are as follows:

IBM Power Systems Performance

- 0 - Processor multi-tasking is disabled. This value corresponds to ST context.
- 1 - Processor multi-tasking is enabled. This value corresponds to SMT2 context if the partition's Processor Compatibility Mode is POWER6 or POWER6+. Otherwise, the thread context is determined by the maximum SMT level control.
- 2 - Processor multi-tasking is system controlled. This is the default value. For POWER7 and POWER8, the implementation is identical to '1', processor multi-tasking enabled.

Examples:

```
DSPSYSVAL SYSVAL(QPRCMLTTSK)
CHGSYSVAL SYSVAL(QPRCMLTTSK) VALUE('0') /* ST context */
CHGSYSVAL SYSVAL(QPRCMLTTSK) VALUE('1') /* SMTn context */
CHGSYSVAL SYSVAL(QPRCMLTTSK) VALUE('2') /* SMTn context */
```

13.3.3 *QWCCHGPR API*

For POWER7 and POWER8 customers, QWCCHGPR API is available starting in IBM i 7.1 TR5 to switch between the various SMT settings without rebooting the partition. When processor multi-tasking is enabled, switching among the thread contexts available for the partition IPL may be accomplished using the change processor multitasking information API, QWCCHGPR. QWCCHGPR API changes are effective immediately and persist across system IPL.

The QWCCHGPR API takes a single parameter, the maximum number of secondary threads per processor:

- 0 – No maximum is selected. The system uses the default number of secondary threads as determined by the operating system.
- 1-255 – The system may use up to the number of secondary threads specified.

The QWCCHGPR API may be called from a command line.

Note that setting the maximum number of secondary threads does not establish the processor threading context directly. The maximum value will be accepted regardless of the processor threading contexts supported by the underlying hardware, and the OS will apply the configured maximum to the system. On a POWER8-based system, if a maximum value is specified by the QWCCHGPR API, the OS will try to establish the maximum thread context supported as shown in Table 1, subject to the limit specified.

Examples:

```
CALL PGM(QWCCHGPR) PARM(X'00000000') /* No maximum */
CALL PGM(QWCCHGPR) PARM(X'00000001') /* SMT2 context */
CALL PGM(QWCCHGPR) PARM(X'00000003') /* SMT4 context */
CALL PGM(QWCCHGPR) PARM(X'00000007') /* SMT8 context */
```

The maximum number of secondary threads can be obtained from the retrieve processor multi-tasking information API (QWCRRTVPR).

POWER8 systems running IBM i 7.1 can be configured to run in SMT8 mode using this

function.

For more details, see the following link:

[Change Processor Multitasking Information \(QWCCHGPR\) API](#)

13.4 POWER7 Memory Considerations

Some workloads have memory per core requirements that exceed the amount of memory that a POWER7 system supports. The following options are available for workloads that require more memory per core:

- Lower number of cores per socket
- TurboCore™

13.5 POWER7 TurboCore

You can select to run POWER7 in TurboCore(TM) mode to gain higher processor speeds and twice the cache per core but utilize fewer cores per chip. This also saves on software costs for those applications that are licensed per core, like databases and some application servers. If the client has workloads that require many simultaneous tasks that benefit from being all run in parallel, then POWER7 can be run in MaxCore mode providing up to 8 cores and up to 32 threads per socket or chip.

Turbo-core mode is only available on the selected models. Turbo-core mode allows the server to “switch” from normal operating mode of 8 cores active to 4 cores active. This switch can only occur after an IPL. In Turbo-core mode the 4 cores active achieve higher performance because these active cores can utilize the extra cache made available from the 4 inactive cores.

For detailed information refer to:

[Under the Hood: NUMA on POWER7 in IBM i](#)

13.6 Power Savings Mode

Many customers can achieve cost savings by tuning their systems for energy management. By doing this tuning, system performance may be affected. On the positive side, tuning the energy setting allows some systems to be able to boost their processor frequency dynamically when running at lower processor utilization. On the other hand, tuning the energy setting can result in slower system performance at high utilization due to slower dynamic processor frequency changes.

Nominal energy settings provide the most consistent processor frequency behavior and allow consistent response time and throughput results. Because of this, use nominal settings if energy tuning is not required.

POWER Systems include Intelligent Energy features that help to dynamically optimize energy usage and performance so that the best possible balance is maintained. Intelligent Energy features like EnergyScale(TM) dynamically optimizes processor speed based on thermal conditions and system utilization. If the system's environment is favorable, the system can speed up processor cores to a frequency up to 10% higher than the normal rated speed to better handle demanding workloads. When utilization is lighter, or if environmental conditions are less favorable, the system can slow processor cores by as much as 50% to save energy. Users can select whether Intelligent Energy Optimization favors maximizing performance or energy savings based on their needs.

For more information see the following link:

[IBM EnergyScale for POWER8 Processor-Based Systems](#)

13.7 Adapter Placement

High-speed adapters should be placed following the recommendations of the PCI Adapter Placement recommendations for the individual POWER model.

For detailed information refer to the POWER7 or POWER8 section of the Systems Hardware information at:

[POWER7 System Hardware](#)

[POWER8 System Hardware](#)

13.8 Affinitized Partitions

The POWER System hypervisor was improved to maximize partition performance through affinitization. It optimizes the assignment of CPU and memory to partitions based on system topology. This results in a balanced configuration when running multiple partitions on a system.

When a partition gets activated, the hypervisor will allocate CPUs as close as possible to where allocated memory is located in order to reduce remote memory access. For shared partitions the hypervisor assigns a home node domain, the chip where the partition's memory is located, for each virtual processor. The hypervisor dispatches the shared partition's virtual processor(s) to run on the home node domain whenever possible. If dispatching on the home node domain is not possible due to physical processor over commitment of the system, the hypervisor will dispatch the virtual processor temporarily on another chip.

iDoctor Collection Services Investigator can be used to view the placement of an IBM i partition. Right click on the current Collection Services collection and select System Graphs->Partition placement (affinity)->Partition placement (at end of collection). A report similar to the following is generated:

Interval end time	Shared LPAR	Affinity score	Book	Node	Partition processors	Partition memory (gigabytes)	Processors % of total	Memory % of total	Total processors	Total memory (gigabytes)
2015-09-16-00.0>	0	50	0000	000A	4	91.1592	12.50%	12.45%	32	732.1826
2015-09-16-00.0>	0	50	0000	000B	7	161.8076	21.87%	22.09%	32	732.1826
2015-09-16-00.0>	0	50	0000	0008	5	114.3369	15.62%	15.61%	32	732.1826
2015-09-16-00.0>	0	50	0001	000C	4	109.6865	12.50%	14.98%	32	732.1826
2015-09-16-00.0>	0	50	0001	000D	6	90.9434	18.75%	12.42%	32	732.1826
2015-09-16-00.0>	0	50	0001	000E	3	82.2822	9.37%	11.23%	32	732.1826
2015-09-16-00.0>	0	50	0001	000F	3	81.9668	9.37%	11.19%	32	732.1826

Figure 24 - Partition Placement

The report states whether the partition is shared or dedicated, and shows which books or drawers (Book column) and chips (Node column) the partition's processors and memory are assigned to. The report also includes an affinity score that ranges from 0 to 100, where 100 is optimal. See section 14.2 on the Dynamic Platform Optimizer for information about improving partition placement and the partition's affinity score.

PowerVP can also be used to view partition placement. PowerVP has the advantage of showing the placement of all of the partitions on the system, whereas CSI only shows the one partition. See section 13.10 for more information about PowerVP.

13.9 System Affinity Settings

IBM i provides a system value that dynamically adjusts the affinity of threads. IBM i

IBM Power Systems Performance

assigns each newly created task a Home Node ID, essentially suggesting for it its preferred POWER chip. Each time that a task enters a dispatchable state, the IBM i's task dispatcher first attempts to dispatch the task on a core of this preferred node.

In the case of multithreaded jobs, it is possible to indicate either on a job basis (saying *GROUP or *NOGROUP on THDRSCAFN within a routing entry or prestart job entry) or system-wide (by using the QTHDRSCAFN system value) to control whether the multiple threads of a job should share the same Home Node, or whether each should be assigned an arbitrary Home Node.

[System Affinity Setting - QTHDRSCADJ](#)

[System Affinity Setting - Routing Entry](#)

For more details on affinity on POWER hardware, see:

[Under the Hood: NUMA on POWER7 in IBM i](#)

13.10 IBM PowerVP Virtualization Performance

IBM PowerVP provides performance monitoring to help proactively address performance issues by visualizing the mapping of partition resources to physical hardware. This helps users determine how good their partition affinity is, as described in the previous section. PowerVP also allows the user to drill down into low level performance metrics for individual partitions. Metrics include CPU utilization, disk transfer rate, network utilization, and various cycle per instruction (CPI) metrics.

An example of using PowerVP to visualize partition placement is shown in the following image. Each partition's assigned cores and memory is color coded. If a partition's resources are fragmented, consider using the Dynamic Platform Optimizer to improve partition placement (section 14.2).

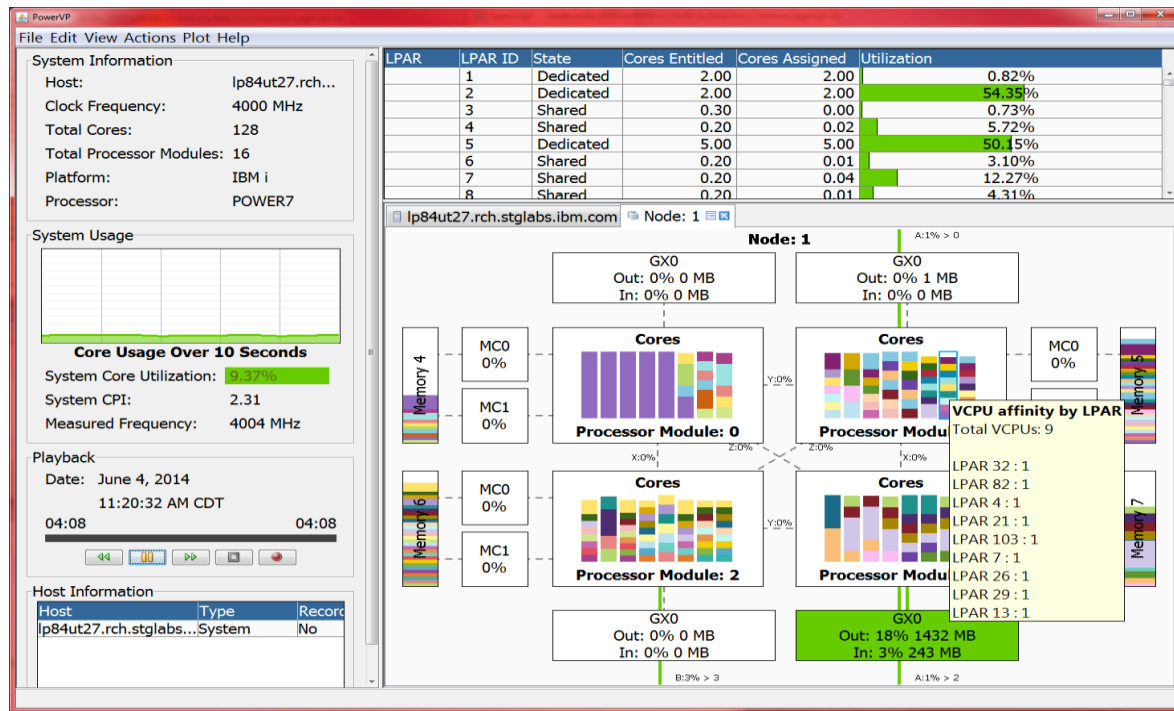


Figure 25 - PowerVP

More information is available through this link and blog articles:

IBM Power Systems Performance

<http://www-03.ibm.com/systems/power/software/performance/>

and

[IBM PowerVP: Introduction and Technical Overview Redpaper.](#)

[PowerVP Offers New Features](#)

[Installation Tips for PowerVP](#)

13.11 Collecting and Viewing Performance Data for Entire Physical System

IBM i customers using multiple partitions may find it very valuable to understand overall processing capability across all logical partitions on the physical system. Collection Services has the ability to collect select key performance metrics (such as CPU) for all LPARS on a single server, regardless of whether the partition is running IBM i, AIX or Linux. It collects the data known to the Hypervisor and stores the data in the QAPMLPARH performance database file.

To enable the collection of this performance data, from the HMC Partition Properties General tab, check the box to “Allow performance information collection” :

The screenshot shows the 'Partition Properties' dialog box with the 'General' tab selected. The 'Name' field contains '*MNPART1'. The 'State' is 'Running'. The 'Allow performance information collection' checkbox is checked and highlighted with a blue box. Other options include 'Allow this partition to be suspended.' (unchecked), 'RestrictedIO Partition' (checked), and 'Sync current configuration Capability' set to 'Sync turned OFF'. Buttons for 'OK', 'Cancel', and 'Help' are at the bottom.

Property	Value
Name:	*MNPART1
ID:	20
Environment:	IBM i
State:	Running
Attention LED:	On
Resource configuration:	Configured
OS version:	IBM i Licensed Internal Code 7.2.0 3060 0
Current profile:	CTCLPMD5
System:	9179-MHD*1016B3P

Allow performance information collection

Allow this partition to be suspended.

RestrictedIO Partition

Sync current configuration Capability: Sync turned OFF

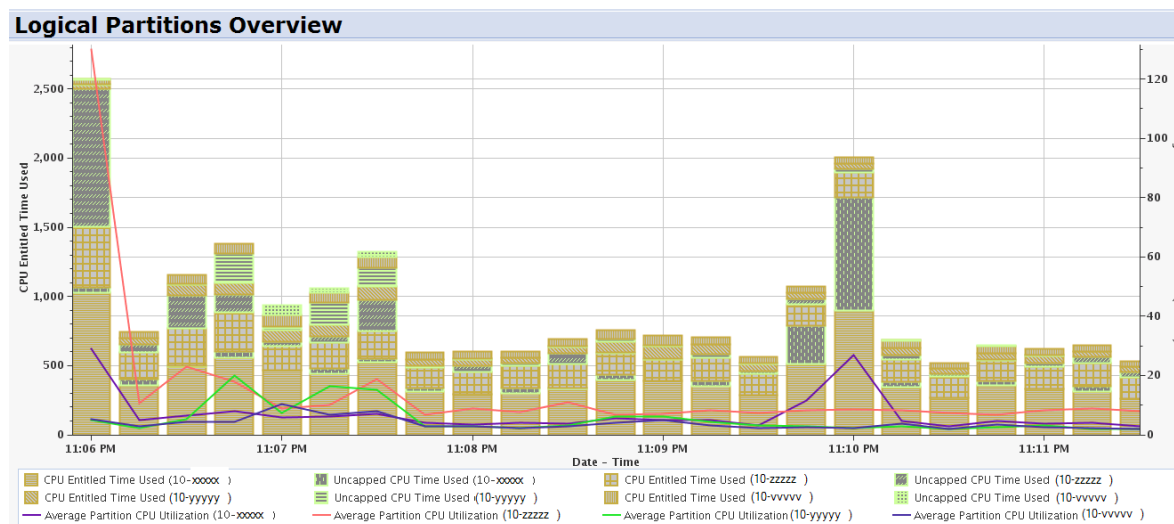
You only need to enable this option on one IBM i partition. Information collected will reflect work done in partitions running AIX and Linux as well as IBM i, but only IBM i has this data collection capability. This feature is available on POWER6 and above hardware and a minimum release level of IBM i 6.1.

Meaningful charts are available in both PDI and iDoctor to visualize the data. In PDI, navigate to Performance → Collection Services → Physical hardware. The following charts are available:

IBM Power Systems Performance

- Physical System
 - Logical Partitions Overview
 - Donated Processor Time by Logical Partition
 - Uncapped Processor Time Used by Logical Partition
 - Virtual Shared Processor Pool Utilization
 - Physical Processors Utilization by Physical Processor
 - Dedicated Processors Utilization by Logical Partition
 - Physical Processors Utilization by Processor Status Overview
 - Physical Processors Utilization by Processor Status Detail
 - Shared Memory Overview
 - Full System I/O Architecture
 - All 12X Loops
 - All PCIe Gen2

Below is an example of the Logical Partitions Overview perspective showing various CPU related metrics across several partitions:



In iDoctor, many charts are available in Collections Services Investigator under the System graphs folder:

- System graphs
 - LPAR graphs by OS type
 - LPAR graphs by shared processor status
 - LPAR graphs by virtual shared pool ID
 - TLBIEs
 - Rankings
 - Partition placement (affinity)

IBM Power Systems Performance

For additional information:

[IBM i Knowledge Center: Collecting and displaying CPU for all partitions](#)

[i Can blog: i Can Display CPU Utilization For All Partitions](#)

13.12 POWER8 Redbooks

POWER8 redbook publications are available at:

<http://www.redbooks.ibm.com/redbooks.nsf/pages/power8>

The POWER8 Performance Redbook is available at:

[Performance Optimization and Tuning Techniques for IBM Processors, including IBM POWER8](#)

14 Virtualization

14.1 Virtualization Best Practices

This section summarizes the POWER7 Virtualization Best Practices. For detailed description and latest updates, please refer to the latest version of the POWER7 Virtualization Best Practice Guide at URL:

[POWER7 Virtualization Best Practice Guide](#)

Additional tips are available at the DeveloperWorks PowerVM wiki:

[DeveloperWorks PowerVM wiki](#)

<https://www.ibm.com/developerworks/community/wikis/home?lang=en - !/wiki/PowerSystems/page/PowerVM>

Detailed information about POWER7 LPARs and virtualization is available in the following white paper:

[Under the Hood: POWER7 Logical Partitions](#)

Other excellent resources for details on PowerVM is available in the following links:

[PowerVM Processor Virtualization 101](#)

[PowerVM Processor Virtualization 101 Part 2](#)

14.2 Dynamic Platform Optimizer (DPO)

The Dynamic Platform Optimizer (DPO) can be used to report affinity scores for partitions and to potentially improve partition placement for partitions with poor placement. On recent firmware DPO can be used to report the affinity score of individual partitions:

```
➤ lsmemopt -m <managed_system> -o currscore -r lpar  
lpar_name=mylpar1,lpar_id=1,curr_lpar_score=100  
lpar_name=mylpar2,lpar_id=2,curr_lpar_score=80
```

DPO can also be used to predict potential placement improvements:

```
➤ lsmemopt -m <managed_system> -o calcscore -r lpar  
lpar_name=mylpar1,lpar_id=1,curr_lpar_score=100,predicted_lpar_score=100  
lpar_name=mylpar2,lpar_id=2,curr_lpar_score=80,predicted_lpar_score=100
```

DPO can be used to re-assign partition resources, potentially improving affinity and partition performance. However DPO may reduce partition performance while it is actively moving resources. Refer to the following resources before using DPO:

[Dynamic Platform Optimizer - Affinity and Beyond for IBM Power](#)

and

[Dynamic Platform Optimizer](#)

14.3 VIOS Advisor

The VIOS advisor is an application that runs within the customer's VIOS for a user specified amount of time (hours). It polls and collects key performance metrics before analyzing results and providing a health check report. Additionally it proposes changes to the environment or areas to investigate further.

The goal of the VIOS advisor is to be an expert system that analyzes performance metrics and makes assessments and recommendations based on the expertise and experience

IBM Power Systems Performance

available within the IBM systems performance group.

Additional VIOS Advisor information can be found at the following websites:

[VIOS Advisor](#)

and

[VIOS performance advisor](#)

14.4 iDoctor Power Connections – VIOS Investigator

iDoctor Power Connections allows the ability to collect and analyze performance related data from a VIOS partition. The data can be imported into DB2 SQL tables on an IBM i partition or a PC into an SQLite database for viewing with iDoctor. The types of data that can be collected and analyzed are as follows.

NMON: Allows looking at overall performance of the VIOS partition including metrics for CPU, memory, disk, processes, and fiber channel.

NPIV: This is an iDoctor collection mechanism which uses FCSTAT to collect snapshots over a specified amount of time. The resulting data can be graphed to show the number of IOs per second, Megabytes per second, and errors on physical and virtual fiber channel adapters.

SEA: This is an iDoctor collection mechanism which uses SEASTAT to collect snapshots over a specified amount of time. The resulting data can be graphed to show the number of packets and megabytes being sent and received on SEA adapters and which client partitions are utilizing the adapters the most.

VIOS Advisor: iDoctor has the ability to collect VIOS Advisor data and transfer it to the local PC to be unzipped and displayed in a web browser. There are no iDoctor graphs available over the VIOS Advisor data.

Disk Mapping: The disk mapping option creates a table by connecting to the HMC to create a mapping from IBM i disk unit to VSCSI HDISK or Virtual Fiber Channel VFCHOST and FCS adapter on the VIOS.

PERFPMR: This is a data collection tool used by the VIOS/AIX Support team. The iDoctor client has the ability to collect this from the VIOS partition and download it to the PC for upload to a support PMR.

Additional VIOS Investigator information can be found at the following website:

https://www-912.ibm.com/i_dir/idoctor.nsf/nm.html

15 Reporting a Performance Problem

15.1 Introduction

The focus on this chapter is on what information and data should be provided when reporting a performance problem to post-sales support. However, the information provided in this chapter also applies when reporting performance problems to pre-sales and service organizations.

15.2 Define the Performance Problem

The first question support will ask when a performance problem is reported is “What is slow?” A good understanding about what exactly is slow helps the performance analyst concentrate the analysis on the component(s) that is most likely causing the performance problem.

As a general rule, the better the description of the performance problem the more likely there will be a quick identification of the root cause and potential resolution.

The IBM i Global Support Center (iGSC) has provided several Must Gather documents with detailed instructions for gathering the data required to analyze performance problems. [Master Document List for Performance](#)

Over the last several years the iGSC has worked on automating the majority of the Must Gather Documents into a suite of tools known as QMGTOOLS. Many of the Must Gather Documents have been updated to point at QMGTOOLS functions. When working with support you will likely be asked to use QMGTOOLS in order to automate the collection of data needed to assist in debug. As a proactive measure, it is recommended to ensure the QMGTOOLS library is installed on your system and is periodically updated. Instructions are available here: [How To Obtain and Install QMGTOOLS](#)

You may also be referred to the iDoctor website in order to utilize iDoctor. If iDoctor is needed by support to assist with a PMR, then a temporary license key will be provided. https://www-912.ibm.com/i_dir/idoctor.nsf/downloadoptions.html

15.3 Questions that help IBM diagnose the problem

The following is a list of questions that help to define a performance problem:

- Can you append more detail on the simplest, repeatable example of the problem?
- Can the problem be demonstrated with the execution of a specific command or sequence of events?
- Were any new IBM PTFs or groups applied just prior to the problem starting?
- Does the problem impact interactive users, batch jobs, or both?
- What cumulative PTF package is installed on the system?
- What is the level of the hiper, database, java, tech refresh, and other applicable group PTFs?
- Were any application changes or vendor fixes applied recently?
- Has the CPU utilization changed since the problem started? Is it higher or lower than it was before?

IBM Power Systems Performance

- How has the disk utilization changed since the problem started?
- If the problem impacts a specific job, user, or subset of jobs, please describe these in the greatest detail possible.
- When do any problem jobs or problem workloads run?
- Does the performance problem involve SQL access to the database? If so, has a specific statement or type of SQL statement been identified? Has the SQL been analyzed with Visual Explain and indexed properly?
- Were there any hardware upgrades or changes since the problem happened?
- Is there any performance data available from before the problem started? If not, is there any previous data that can be retrieved from tape?

16 References

The following sections provide links to various types of on-line resource information and documentation for IBM i:Blogs on Performance Topics

Here are two key IBM blogs on Performance Topics:

- i Can (Technical Tips for i)
<http://www.ibmssystemsmag.com/Blogs/i-Can/>
- DB2 for i (often discusses performance topics)
<http://db2fori.blogspot.com/>

16.1 Education and Training

IBM i Performance Analysis Workshop is a 3 to 4 day workshop on IBM i performance analysis methodology and problem solving.

[iPAW workshop](#)

IBM i Performance Tuning - II: Advanced Analysis and Capacity Tuning is a 4 day class on IBM i performance concepts and performance tools.

[IBM i Performance Tuning - II: Advanced Analysis and Capacity Tuning](#)

IBM iDoctor for i Workshops provide training on how to use the suite of iDoctor tools.

[iDoctor Workshop](#)

DB2 for i SQL Performance Workshop This is available as a standardized course from the education team or a customized offering from the DB2 for i Center of Excellence.

<http://www-03.ibm.com/systems/i/software/db2/db2performance.html>

[DB2 for i SQL Performance Workshop](#)

Additionally, the IBM i Lab Services Power Systems performance team can do informal education or skills transfer on any IBM i performance related topic. Contact the IBM i performance team leader, Eric Barsness, at ericbar@us.ibm.com for more information. For education specific to SQL contact Mike Cain at mcain@us.ibm.com.

16.2 Redbooks and Redpapers

The following are selected Redbooks related to IBM i Performance Tools:

- End to End Performance Management on IBM i
<http://www.redbooks.ibm.com/abstracts/sg247808.html>
- IBM eServer iSeries Performance Management Tools
<http://www.redbooks.ibm.com/Redbooks.nsf/RedbookAbstracts/redp4026.html?Open>
- IBM Systems Director Navigator for i
<http://www.redbooks.ibm.com/Abstracts/sg247789.html?Open>
- IBM i 7.1 Technical Overview Technology Refresh Updates

IBM Power Systems Performance

<http://www.redbooks.ibm.com/abstracts/sg247858.html>

- IBM PowerVP Introduction and Technical Overview
[IBM PowerVP Introduction and Technical Overview](#)
- A Systems Management Guide to Performance Management for System i and System p servers
<https://www.redbooks.ibm.com/redbooks/pdfs/sg247122.pdf>
- Sizing IBM i5/OS Work on IBM System i5 Partitions
<http://www.redbooks.ibm.com/abstracts/sg246656.html?Open>

While the following Redbooks were written in the V5R4 timeframe, the majority of their technical content is still applicable:

- [Application and Program Performance Analysis Using PEX Statistics on IBM i5/OS](#)
- [IBM iDoctor iSeries Job Watcher: Advanced Performance Tool](#)
- [Best Practices for Managing IBM i Jobs](#)
- [Managing OS/400 with Operations Navigator V5R1](#)
- [i5/OS Diagnostic Tools for System Administrators: An A to Z Reference for Problem Determination](#)

The following are selected Redbooks related to IBM Power Performance and Virtualization:

- IBM PowerVM Virtualization Introduction and Configuration
<http://www.redbooks.ibm.com/abstracts/sg247940.html>
- IBM PowerVM Best Practices
<http://www.redbooks.ibm.com/abstracts/sg248062.html>
- IBM PowerVM Virtualization Managing and Monitoring
<http://www.redbooks.ibm.com/abstracts/sg247590.html>

16.3 Additional Performance related information

An internet search is a common and valid way of searching for IBM i information, and there is plenty of it out there. The following are selected performance related links to key topics:

- Performance Management for Power Systems: [PM for Power Systems](#)
- IBM Workload Estimator: [WLE](#)
- IBM i Performance Tools: [developerWorks Performance Tools](#)
- IBM i Performance Data Investigator: [developerWorks PDI](#)
- IBM iDoctor for IBM i: [iDoctor](#)
- IBM i Wait Accounting information:
 - [Job Waits Whitepaper](#)
 - [KnowledgeCenter: The basics of Wait Accounting](#)
 - [developerWorks: IBM i Wait Accounting](#)
- Best Practices for Managing IBM i Jobs and Output: [Jobs Redpaper](#)
- IBM Tivoli Monitoring: [Tivoli Monitoring](#)
- IBM Tivoli Monitoring Agent for i5/OS: [Tivoli Monitoring Agent](#)

iDoctor:

SSD references:

- [iCan: Planning for Solid State Drives](#)
- [iCan: Moving Data to Solid State Drives](#)
- [IBM Systems: Moving Data to Solid State Drives](#)
- Customer use of SSDs
[Customer Use of SSD \(Solid State Drives\)](#)

16.4 Database Performance Articles

- DeveloperWorks - Database Performance:
[IBM DB2 for i tips and techniques](#)
- DB2 for i– “Database performance and query optimization”
[Database Performance and Query Optimization](#)
- DDS and SQL - The Winning Combination for DB2 for i: Business and technical benefits of a modern DB2 for i database
[DDS and SQL - The Winning Combination for DB2 for i](#)
- Preparing for and Tuning the SQL Query Engine on DB2 for i5/OS. *This Redbook is still valuable as a reference but targets V5R4 so does not reflect the many enhancements available in IBM i 6.1 and IBM i 7.1.*
<http://www.redbooks.ibm.com/abstracts/sg246598.html?Open>
- 5 Essential Ways to Use iSeries Navigator – SQL Plan Cache
[5 Essential Ways to Use iSeries Navigator - SQL Plan Cache](#)
- Gauge SQE use in DB2 for i 6.1
[Gauge SQE use in DB2 for i 6.1](#)
- Improved Security Controls Open Door to DB2 for i Tool Usage
[Improved Security Controls Open Door to DB2 for i Tool Usage](#)
- Get Your System Humming: 7 Great Tips for Tuning DB2 for i
[Get Your System Humming: 7 Great Tips for Tuning DB2 for i](#)
- Rock Your Query Environment: SQL Plan Cache Primer, Part 1
[Rock Your Query Environment: SQL Plan Cache Primer, Part 1](#)
- Rock Your Query Environment: SQL Plan Cache Primer, Part 2
[Rock Your Query Environment: SQL Plan Cache Primer, Part 2](#)
- Get Up to Speed on SQL's Fast Delete in DB2 for i
<http://www.iprodeveloper.com/article/database-db2-for-i-general/delete-doctor-699326>
- Automate Index Creation and Removal with SYSTOOLS Procedures
[Automate Index Creation and Removal](#)
- Coding SQL Routines on the Fast Track
[Code SQL Routines on the Fast Track](#)
- The Effect of Max Active on DB2 for i Query Performance. This article provides good information even though the latest IBM i 7.1 PTF's eliminate max active from the optimizer's calculation of the fair share of memory.
<http://www.ibm.com/developerworks/ibmi/library/i-maxactive/index.html>
- Process your DB2 for i indexes in parallel
<http://www.ibm.com/developerworks/data/library/techarticle/0301milligan/0301milligan.html>

16.5 Key Performance Resources

The following are valuable resources to use as starting points when researching performance related topics:

- IBM 7.3 Knowledge Center:
[7.3 Knowledge Center: Performance Topic](#)
- IBM 7.2 Knowledge Center:
[7.2 Knowledge Center: Performance Topic](#)
- IBM 7.1 Knowledge Center:
[7.1 Knowledge Center: Performance Topic](#)
- IBM Systems Hardware (IBM Knowledge Center):
[POWER8](#)
- IBM i Performance Management:
[Performance Management on IBM i](#)
- IBM Performance Management for Power Systems:
[PM for Power Systems](#)
- iDeveloperWorks:
<http://www.ibm.com/developerworks/ibmi/>
- IBM Support Software Knowledge Base:
[Software Knowledge Base](#)

16.6 Performance Capabilities Reference Note

The Performance Capabilities Reference Manual (PCRM) was formerly the reference manual for all things related to IBM i performance considerations. Beginning in 2014, the PCRM only covers CPW rating information. This includes updates for new hardware models and CPW ratings. Older versions are still available for download. For detailed IBM i performance information use the links referenced above.



The Power Architecture and Power.org wordmarks and the Power and Power.org logos and related marks are trademarks and service marks licensed by Power.org.

UNIX is a registered trademark of The Open Group in the United States, other countries or both.

Java and all Java-based trademarks and logos are trademarks of Sun Microsystems, Inc. in the United States and/or other countries.

TPC-C and TPC-H are trademarks of the Transaction Performance Processing Council (TPPC).

SPECint, SPECfp, SPECjbb, SPECweb, SPECjAppServer, SPEC OMP, SPECviewperf, SPECapc, SPECchpc, SPECjvm, SPECmail, SPECimaps and SPECsfs are trademarks of the Standard Performance Evaluation Corporation (SPEC).

InfiniBand, InfiniBand Trade Association and the InfiniBand design marks are trademarks and/or service marks of the InfiniBand Trade Association.

© IBM Corporation 2016
IBM Systems
Route 100
Somers, New York 10589

Produced in the United States of America
October 2014

All Rights Reserved

This document was developed for products and/or services offered in the United States. IBM may not offer the products, features, or services discussed in this document in other countries.

The information may be subject to change without notice. Consult your local IBM business contact for information on the products, features and services available in your area.

All statements regarding IBM future directions and intent are subject to change or withdrawal without notice and represent goals and objectives only.

IBM, the IBM logo, ibm.com, AIX, Power Systems, POWER5, POWER5+, POWER6, POWER6+, POWER7, POWER7+, POWER8, TurboCore and Active Memory are trademarks or registered trademarks of International Business Machines Corporation in the United States, other countries, or both. If these and other IBM trademarked terms are marked on their first occurrence in this information with a trademark symbol (® or ™), these symbols indicate U.S. registered or common law trademarks owned by IBM at the time this information was published. Such trademarks may also be registered or common law trademarks in other countries. A current list of IBM trademarks is available on the Web at "Copyright and trademark information" at www.ibm.com/legal/copytrade.shtml

Other company, product, and service names may be trademarks or service marks of others.

IBM hardware products are manufactured from new parts, or new and used parts. In some cases, the hardware product may not be new and may have been previously installed.

Regardless, our warranty terms apply.

Photographs show engineering and design models.

Changes may be incorporated in production models.

Copying or downloading the images contained in this document is expressly prohibited without the written consent of IBM.

This equipment is subject to FCC rules. It will comply with the appropriate FCC rules before final delivery to the buyer. Information concerning non-IBM products was obtained from the suppliers of these products or other public sources.

Questions on the capabilities of the non-IBM products should be addressed with those suppliers.

All performance information was determined in a controlled environment. Actual results may vary. Performance information is provided "AS IS" and no warranties or guarantees are expressed or implied by IBM. Buyers should consult other sources of information, including system benchmarks, to evaluate the performance of a system they are considering buying.

When referring to storage capacity, 1 TB equals total GB divided by 1000; accessible capacity may be less.

The IBM home page on the Internet can be found at: <http://www.ibm.com>.

A full list of U.S. trademarks owned by IBM may be found at: <http://www.ibm.com/legal/copytrade.shtml>.

The IBM Power Systems home page on the Internet can be found at: <http://www.ibm.com/systems/power/>

POW03102-USEN-08