

Customizing AT&T Network Client V6.9

- Click [here](#) to download the installation .exe file ([setup690ga_20090122.exe](#) size: 48Mb). Locate the file and double-click to perform the installation process.
- Reboot your machine after the installation completes.. even if not prompted by the software to do so.
- Locate the 'AT&T Network Client' icon on your Windows desktop and double-click to launch.
- You should be prompted to complete a 'login profile'. You will need the 'account' and 'userid' which has been assigned to you.
- Follow the following screens

AT&T Network Client (page 1 of 3)

Setup Choice

Your computer is already set up to connect to the network. What would you like to do now?

Change phone numbers or other connection settings.

Change any setting for the following profile and the current connection:

RCCC482 - ssl

Create a new profile for an existing user ID. 1.

< Back **Next >** Cancel Help 2.

- Choose the 'Create a new profile..' radio button
- Select 'Next'

AT&T Network Client (page 2 of 3)

Create New Profile

Enter a name for your new profile. (The name can be any text you choose, it is not sent to the network.)

RCCC482-test 1.

(for example: My intranet profile)

Should this profile initially use the default settings or be modeled after an existing profile:

Use default settings 2.

Use settings from the following profile:

RCCC482 - ssl

< Back **Next >** Cancel Help 3.

- Provide a 'name' for this profile
- Choose the 'Use default settings' radio button
- Select 'Next'

Customizing AT&T Network Client V6.9

AT&T Network Client (page 3 of 3)

User ID

What is your account and user ID?

Account:

User ID:

Advanced Login Properties...

< Back Finish Cancel Help

- Fill in your assigned 'Account' and 'User ID'
- Select the 'Advanced Login Properties...' button

AT&T Network Client (page 1 of 4)

Network

Which network(s) would you like to access?

The Internet

My company's intranet

Both the Internet and my company's intranet

Default (recommended)

Which service would you like to use to access your intranet?

Managed VPN - SSL DualAccess

< Back Next > Cancel Help

- Select 'Both the Internet...' radio button
- Choose the 'Managed VPN – SSL DualAccess' service from the pulldown list
- Select 'Next'

Customizing AT&T Network Client V6.9

AT&T Network Client (page 2 of 4)

DNS

What are the addresses of your DNSs (Domain Name Servers)?

Use default network settings 1.

Use the following manual settings

Primary DNS

Secondary DNS

2.

- Choose 'Use default network settings' radio button
- Select 'Next'

AT&T Network Client (page 3 of 4)

WINS

What are the addresses of your WINS (Windows Internet Naming Service) servers?

Use default network settings 1.

Use the following manual settings

Primary WINS

Secondary WINS

Do not update

2.

- Choose 'Use default network settings' radio button
- Select 'Next'

Customizing AT&T Network Client V6.9

AT&T Network Client (page 4 of 4)

Domain Suffix

What domain and domain-suffix search list would you like to use?

Use default network settings

Use the following manual settings

Domain: 1.

Search list:

Do not update

2.

- Type the Domain name 'ibm.com'
- Select 'Finish'
- You will be returned to the 'User ID' menu

AT&T Network Client (page 3 of 3)

User ID

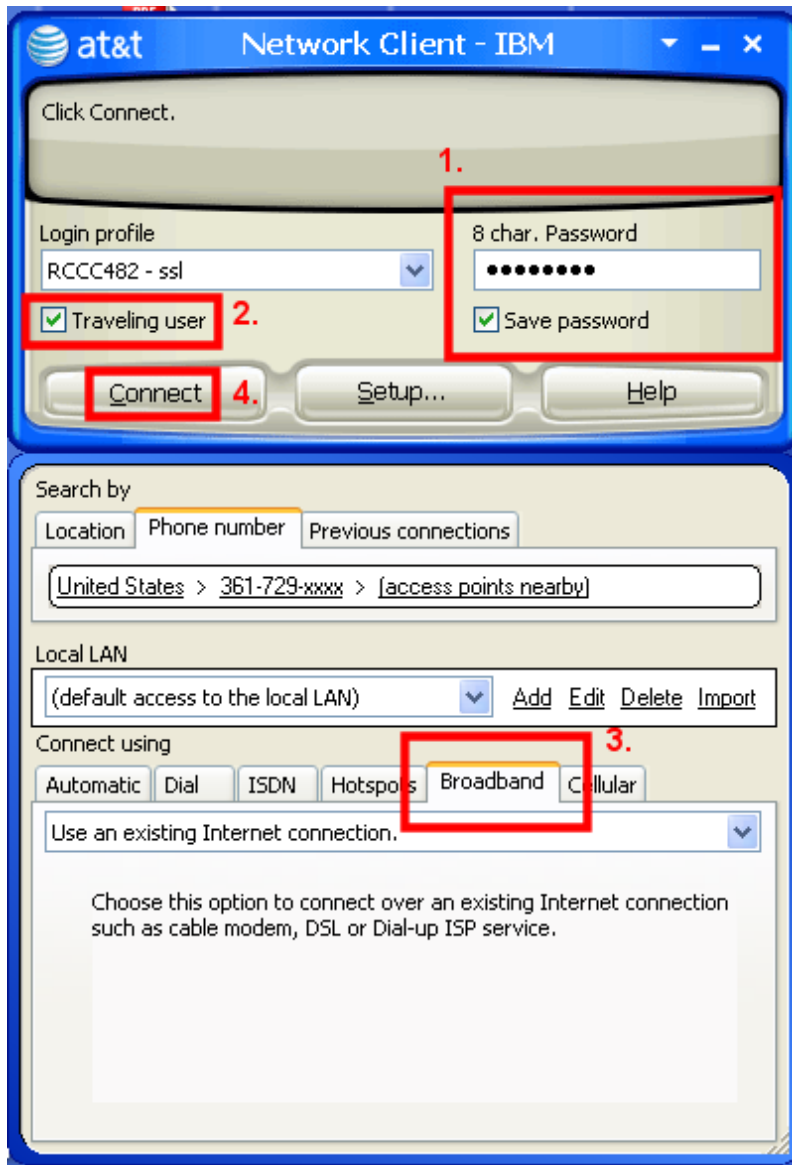
What is your account and user ID?

Account:

User ID:

- Select 'Finish'

Customizing AT&T Network Client V6.9



on the login menu..

- provide your current password. You may be prompted to change it upon first use
- Check the 'Traveling user' checkbox to expose the menu below the login pane.
- Select the 'Broadband' tab. Verify that the selection in the pull-down dialog is 'Use an existing Internet connection.'
- Select 'Connect' to complete the login process and connect to the IBM Intranet.