



## IBM Directory Integrator for Linux

---

### Highlights

---

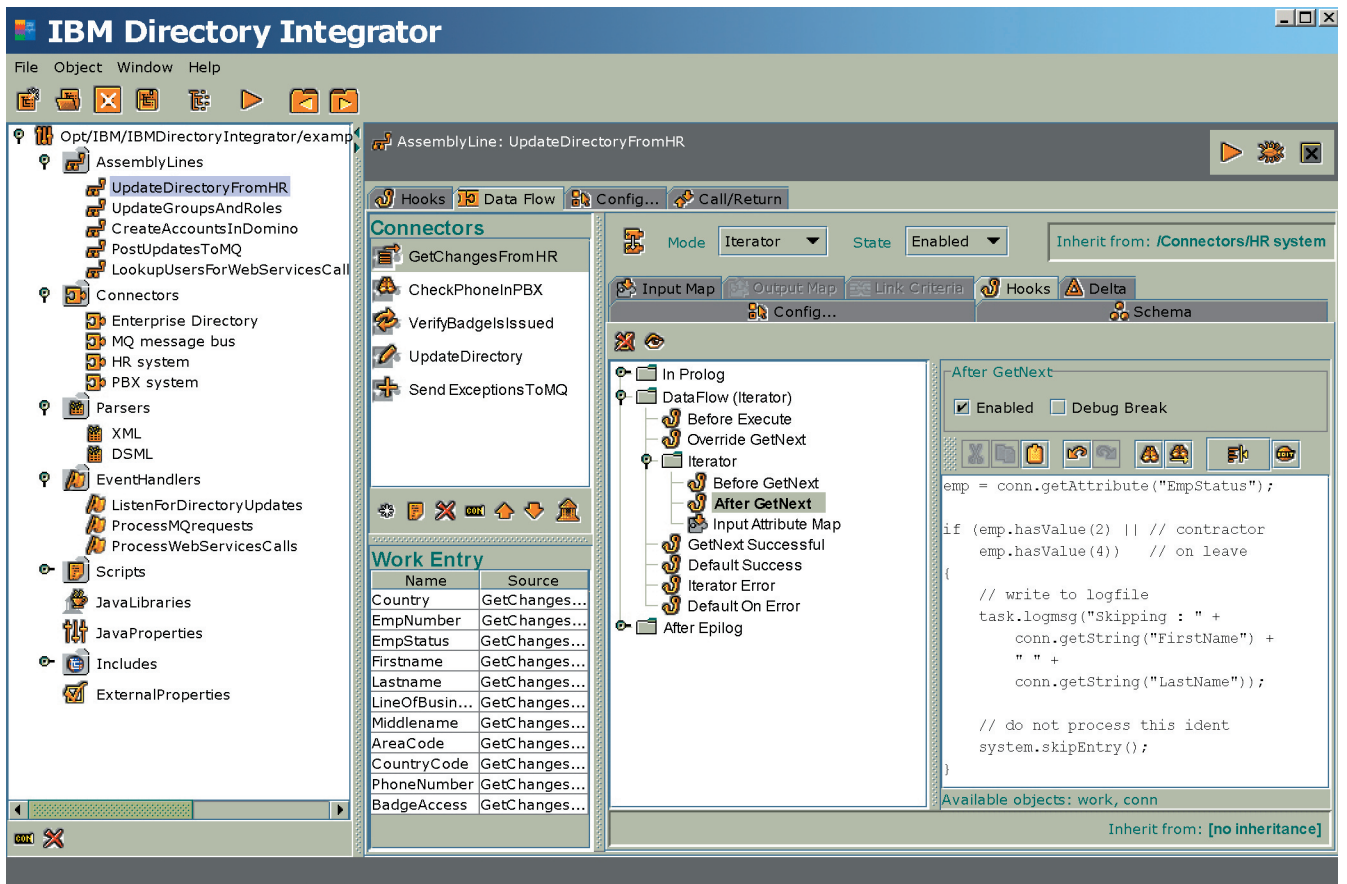
- **Integrates identity data residing in directories, databases, collaborative systems and applications used for human resources, CRM, ERP and other corporate applications in heterogeneous environments**
- **Open, Java™-based architecture fits into a wide variety of customer environments with minimal disruptions**
- **Open-synchronization architecture does not require an inflexible centralized data store such as other leading offerings demand**
- **Creates intelligent, multi-directional data flows called AssemblyLines, which can span multiple sources and targets of data, for rapid deployment and easy extension**
- **Provides a graphical user interface to ease the development, testing, deployment, maintenance and support of the integrated enterprise identity infrastructure**
- **Extends enterprise-class directory integration to the Linux® operating environment.**
- **Event-driven engine enables realtime two-way integration with other enterprise systems**
- **Connector development environment and selection of prebuilt connectors and event handling mechanisms quickly integrate with virtually any application or directory**
- **A powerful enabler of IBM Tivoli® Identity Manager and Tivoli Access Manager**
- **Complements IBM WebSphere® Application Server, WebSphere Commerce Suite and WebSphere Portal by minimizing infrastructure issues and accelerating implementation cycles**

“Seventy percent of enterprises with more than 1,000 clients will implement a metadirectory by year-end 2005.”

—Gartner Inc.<sup>1</sup>

### Building an authoritative enterprise-wide directory infrastructure

Traditional approaches to directory infrastructures can no longer handle the growing volume of users, organizations and resources in an enterprise. Companies are deploying department-specific applications at all levels of the enterprise—each with its own application-specific directory—often resulting in 100 or more individual directories. These disjointed directories usually contain partially redundant—or inconsistent—identity information, and don’t provide the scalability or data integrity that companies need at an enterprise level to implement solutions such as security, provisioning or Web services. To enhance the competitiveness and productivity of their business, companies need to define the authoritative source of this information, and synchronize these directories, performing directory integration to maintain data consistency across multiple identity repositories.



IBM Directory Integrator V5.1 is a realtime engine for integrating directories and other data objects across IBM and non-IBM data stores. Its distributed architecture does not require an inflexible, centralized database, such as other leading offerings demand. Instead, by synchronizing data among the local data stores, IBM Directory Integrator V5.1 allows local departments to manage the data they know best while using the tools that make them most productive. This open-architecture, metadirectory solution for synchronizing and exchanging information between applications or directory sources helps you streamline operations and deploy advanced Web services solutions.

### A key component of your e-business infrastructure

A strong directory foundation provides a consistent identity or data infrastructure that can be used to support your “on demand” e-business infrastructure applications such as mission-critical security and authentication to Web services. IBM Directory Integrator V5.1 helps build the strong foundation you require for your e-business infrastructure because it integrates tightly with other IBM e-business infrastructure software, including IBM WebSphere middleware and Tivoli

identity management and security products. Its data integration capabilities are distinct and complementary to WebSphere’s application integration tool set. Moreover, when used in conjunction with IBM Directory Server V5.1, it provides a data infrastructure that enables enterprises to directly enhance the productivity of user management with solutions like Tivoli Access Manager and Tivoli Identity Manager for provisioning, role-management, delegated administration and user self-service.

---

## Features and Benefits

---

<i>Feature</i>	<i>Benefit</i>
<b>Open architecture</b>	Java-based platform fits into the widest variety of customer environments without disruption, regardless of operating system or directories in use today.
<b>Highly productive Connector development environment</b>	Connector development environment and selection of prebuilt Connectors and event handling mechanisms ease integration with virtually any application or directory—saving a lot of time in enterprise directory deployment.
<b>Scalability</b>	Scalable, flexible architecture is based on a nonpersistent data store, which uses resources more efficiently than solutions that demand the centralization of all resources.

---

### The power of IBM Directory Integrator

IBM Directory Integrator ties together data residing in directories, databases, collaborative systems and applications to help your business optimize flexibility, improve security capabilities and extend the functionality of your infrastructure. A dynamic synchronization layer between the enterprise identity structure and that of the applications creates flexibility by eliminating the need for an intermediate data store. To help improve the accuracy of security systems, Directory Integrator also provides an authoritative view of directory-based identity information. And, the open-architecture Java development environment extends your functionality by allowing information synchronization and exchange across a variety of repositories.

### The functionality of IBM Directory Integrator

IBM Directory Integrator creates intelligent data flows called AssemblyLines based on an incremental, component-based methodology to enable rapid

deployment and easy extension.

Connectors and parsers within Directory Integrator allow for connectivity to a wide range of systems and a number of protocols, and access mechanisms can be configured and extended to the specific enterprise's environment. In addition, Directory Integrator provides a graphical user interface (GUI) to ease the development, testing, deployment, maintenance and support of the integrated enterprise identity infrastructure.

### Implementing your Directory Integrator V5.1 solution with comprehensive services

Complementing Directory Integrator V5.1, IBM offers Professional Services to provide directory solutions including turnkey implementation services, metadirectory services and identity provisioning. The IBM metadirectory service provides integration middle-ware solutions to tie together heterogeneous directories. These services can enable your enterprise to create an integrated enterprise directory infrastructure, helping to significantly decrease the cost of maintaining disjointed directory services.

### Meeting your data and directory integration needs

The IBM Directory Integrator can help you build a noncentralized directory architecture that offers flexible, distributed deployment to your enterprise. Consider the following questions and answers to better understand how Directory Integrator can benefit your environment:

#### *What types of management capabilities will I have?*

A number of new management components have been added to IBM Directory Integrator V5.1 to strengthen deployment into high-availability environments. The JMX Management Architecture (JMA) includes a large library of management application programming interfaces (APIs), a JMX management interface, a browser-based management console and an extendable logging architecture to interface with a number of third-party systems. This architecture also enables administrators to perform system configuration and execution management and to set up Directory Integrator to send realtime notifications to external applications as events warrant.

### *How easy is it to use?*

IBM Directory Integrator V5.1 has a new GUI-integrated development environment, which is very easy to use and enables rapid deployment and integration.

### *Does it support Web services?*

By creating an enterprise-spanning, authoritative data space, IBM Directory Integrator can provide the data integrity for critical business information so you can deploy Web services with confidence. IBM Directory Integrator includes a Web Services Connector to integrate with new and existing Web services in the enterprise. It can also host Web services, enabling your enterprise to expose business rules and existing repositories as Web services, so that other systems may interface with these services.

### **Offering a portfolio of solutions to meet your enterprise needs**

Whether you're securing your enterprise applications or exposing internal processes to trading partners and customers, the IBM Directory Portfolio provides the powerful, scalable and

security-rich enterprise directory solution you need to gain control of your enterprise data. The IBM Directory Portfolio of solutions includes IBM Directory Integrator V5.1, IBM Directory Server V5.1, and optional directory and metadirectory services. IBM Directory Integrator provides an open-architecture, metadirectory solution for synchronizing and exchanging information between applications or directory sources. And, IBM Directory Server V5.1 serves as a foundation for deploying comprehensive identity management applications and advanced software architectures.

### **For more information**

To learn more about IBM Directory Integrator V5.1 or the IBM Directory Portfolio, contact your IBM sales representative, or visit:

**[ibm.com/software/directory](http://ibm.com/software/directory)**



© Copyright IBM Corporation 2002

IBM Software Group  
1133 Westchester Avenue  
White Plains, NY 10604  
U.S.A.

Printed in the United States of America  
11-02  
All Rights Reserved

IBM, the IBM logo, the e-business software logo, Tivoli and WebSphere are trademarks or registered trademarks of International Business Machines Corporation in the United States, other countries, or both.

Java and all Java-based trademarks and logos are trademarks of Sun Microsystems, Inc. in the United States, other countries, or both.

Linux is a registered trademark of Linus Torvalds.

Other company, product and service names may be trademarks or service marks of others.

References in this publication to IBM products or services do not imply that IBM intends to make them available in all countries in which IBM operates.

---

1 Source: Gartner Symposium/ITxpo 2001, May 2001