

Session: C68



iSeries Operations Navigator: The New Work Management

IBM @server iSeries

Presenter: Dennis Schmidt

dschmidt@us.ibm.com

Authors: Tim Rowe

timmr@us.ibm.com

Greg Hintermeister

greg@us.ibm.com

© Copyright IBM Corporation, 2001. All Rights Reserved.
This publication may refer to products that are not currently available in your country. IBM makes no commitment to make available any products referred to herein.

IBM @server. For the next generation of e-business.

© 2001 IBM Corporation. All Rights Reserved.

Course Description

IBM @server iSeries

Freedom for system operators!

- Overview of the new Work Management support in Operations Navigator
- New tools to simplify the life of a system operator!
- Green screens are becoming a thing of the past
 - ▶ WRKACTJOB given new life
 - ▶ WRKJOB made easy
 - ▶ The evolution of WRKSBS
 - ▶ Not your mother's WRKSHRPOOL

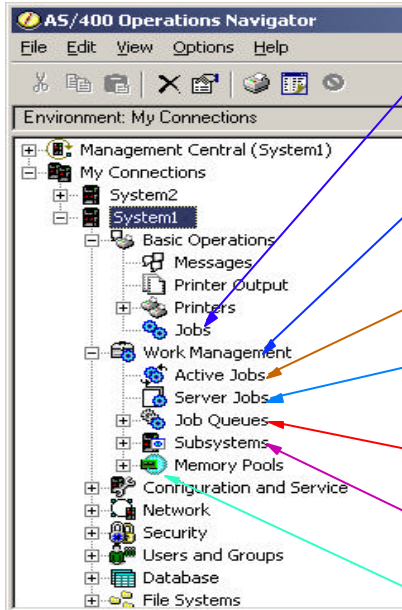


IBM @server. For the next generation of e-business.

© 2001 IBM Corporation. All Rights Reserved.

What's New? - Everything!

IBM @server iSeries



Jobs container has been moved under Basic Operations

'Job Management' has been renamed 'Work Management'

New WRKACTJOB container

Server Jobs has been updated to reflect the new support

Manage the jobs still on job queues

Work with jobs in a specific subsystem

Manage the system's memory pools

IBM @server. For the next generation of e-business.

© 2001 IBM Corporation. All Rights Reserved.

Who is our Target User?

IBM @server iSeries

I would like to introduce Dan, our target user.



"Who is Dan?", you ask. Good question. Dan is a system operator responsible for the daily maintenance for a network of iSeries servers. His tasks include:

Monitoring system performance

Job performance

Job monitoring

Responding quickly to user problems

Trouble shooting problem jobs

Fixing stuck jobs

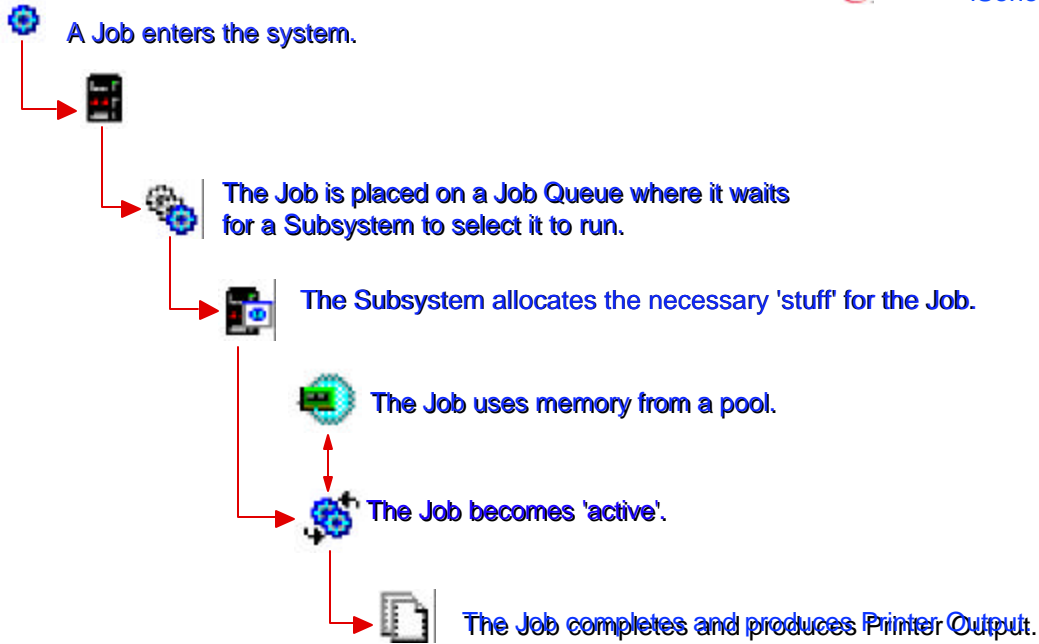
Fixing system problems - memory allocation

IBM @server. For the next generation of e-business.

© 2001 IBM Corporation. All Rights Reserved.

The Life of a Job

IBM @server iSeries



IBM @server. For the next generation of e-business.

© 2001 IBM Corporation. All Rights Reserved.

Job Queues

IBM @server iSeries

Name	Description
Active Job Queues	Manage job queues allocated to active subsystems.
All Job Queues	Manage all job queues defined on the system.

Lists all job queues allocated to active subsystems

Lists all job queues on the system

IBM @server. For the next generation of e-business.

© 2001 IBM Corporation. All Rights Reserved.

Active Job Queues

IBM @server iSeries

Job Queue	Library	Status	Jobs on Queue	Subsystem
Miscq	\$bldship	Active	2	blldshps
Miscq	\$bldtest	Active	1	blldtest
Miscq	Qsys	Active	0	Joyblbds
Parallelq	Qqpl	Active	3	Blldshps
Parallelq	Qqpl	Active	0	Blldtest
Parallelq	Qsys	Active	0	Joyblbds
Qbatch	Qqpl	Active	10	Qbatch
Qctt	Qsys	Active	0	Qctt
Qesauto	Qqpl	Active	0	Qsyswrk
Qinter	Qqpl	Active	12	Qinter
Qnmsvq	Qsys	Active	21	Qsyswrk
Qpdauto	Qqpl	Active	0	Qsyswrk
Qpwfsrvr	Qsys	Active	40	Qsbrvar
Qsnads	Qqpl	Active	0	Qsnads
Qspl	Qqpl	Active	0	Qspl
Qsystemads	Qsys	Active	4	Qsyswrk
Qs36vshe	Qqpl	Active	0	Qbatch
Qs36mnt	Qqpl	Active	0	Qinter

IBM @server. For the next generation of e-business.
© 2001 IBM Corporation. All Rights Reserved.

Job Queue - Context Menu

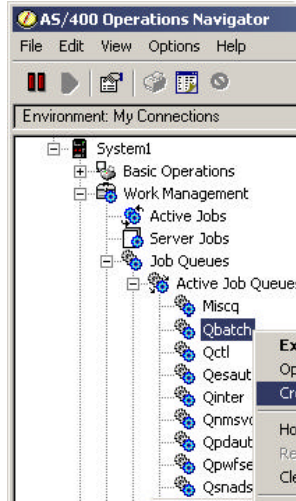
IBM @server iSeries

Menu Item	Description
Explore	Shows the list of jobs waiting on the queue in the right pane of the main Operations Navigator window.
Open	Shows the list of jobs waiting on the queue in a separate window.
Create Shortcut	Places a shortcut to the job queue on your desktop.
Hold	Holds the job queue. When the job queue is held, the subsystem cannot select jobs off the queue to run.
Release	Releases the job queue. The subsystem can select jobs off the queue to run.
Clear	Removes all jobs from the job queue.
Properties	Shows properties for the job queue.

IBM @server. For the next generation of e-business.
© 2001 IBM Corporation. All Rights Reserved.

Job Queue - Create Shortcut

IBM @server iSeries



You can create icons on your desktop for job queues that need regular attention.



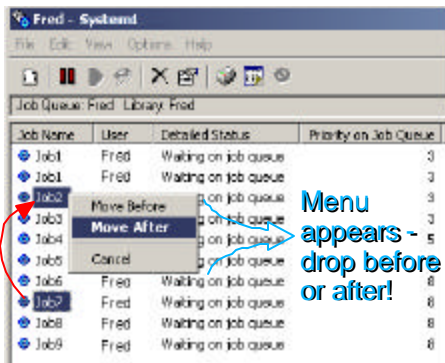
The icons are system independent. Create shortcuts for the same queue on multiple systems!

IBM @server. For the next generation of e-business.

© 2001 IBM Corporation. All Rights Reserved.

Drag and Drop - Changing Priority

IBM @server iSeries



Job7 needs to run after Job2 - Right click on the job and drop it where you want it.

Menu appears - drop before or after!

Job7 is moved between Job2 and Job3

Job Name	User	Detailed Status	Priority on Job Queue
Job1	Fred	Waiting on job queue	3
Job1	Fred	Waiting on job queue	3
Job2	Fred	Waiting on job queue	3
Job7	Fred	Waiting on job queue	3
Job3	Fred	Waiting on job queue	3
Job4	Fred	Waiting on job queue	5
Job5	Fred	Waiting on job queue	5
Job6	Fred	Waiting on job queue	8
Job8	Fred	Waiting on job queue	8
Job9	Fred	Waiting on job queue	8

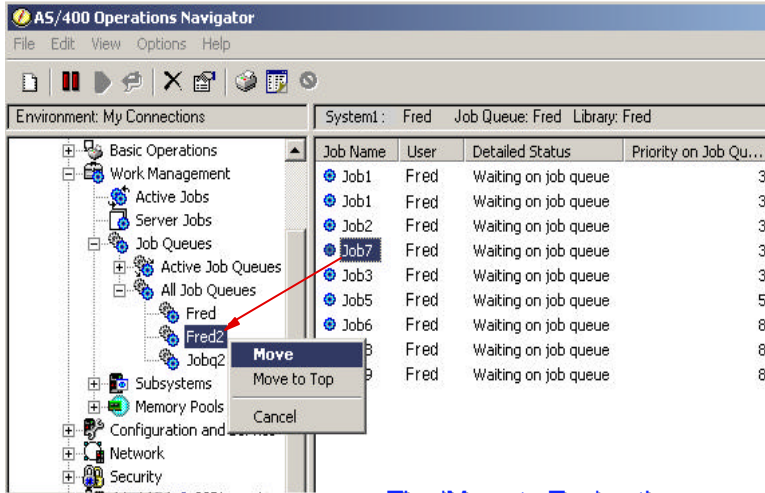
Priority is changed for you!

IBM @server. For the next generation of e-business.

© 2001 IBM Corporation. All Rights Reserved.

Drag and Drop - Moving to Another Job Queue

IBM @server iSeries



Job7 will be moved from job queue 'Fred' to job queue 'Fred2'. The default action places Job7 with the other priority 3 jobs in job queue 'Fred2'.

The 'Move to Top' option moves the selected job to the top of the target job queue. The priority is changed to reflect the change to the top! If the job was held, it will be released!

IBM @server. For the next generation of e-business.

© 2001 IBM Corporation. All Rights Reserved.

Job Queue - General Properties

IBM @server iSeries

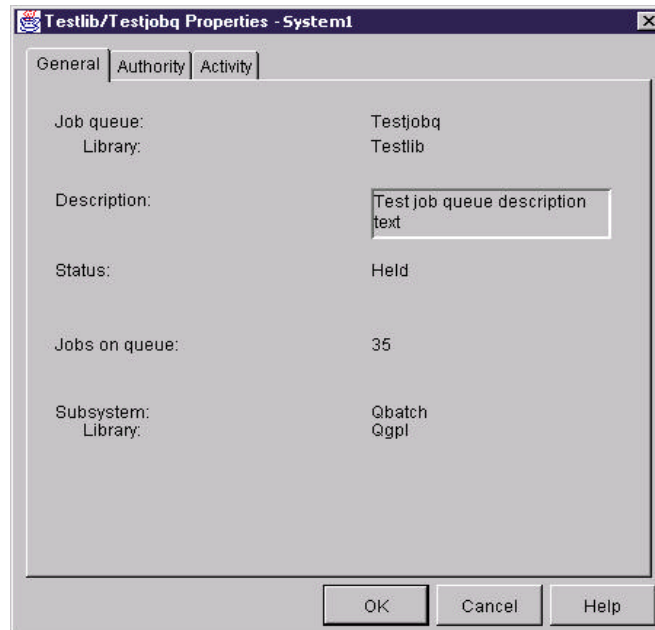
Job queue name and library

Job queue description

Job queue status

Number of jobs on the job queue

Subsystem that has the job queue allocated



IBM @server. For the next generation of e-business.

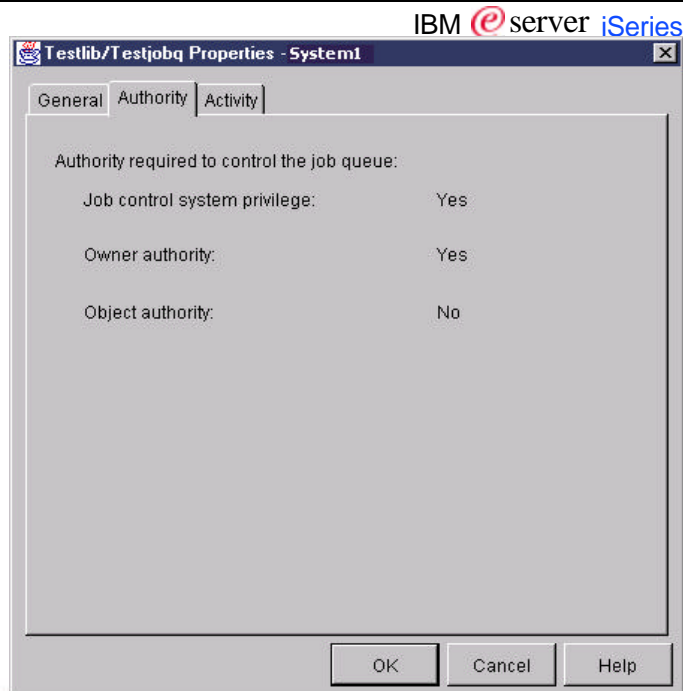
© 2001 IBM Corporation. All Rights Reserved.

Job Queue - Authority Properties

Job control system privilege

Owner authority

Object authority



IBM @server. For the next generation of e-business.

© 2001 IBM Corporation. All Rights Reserved.

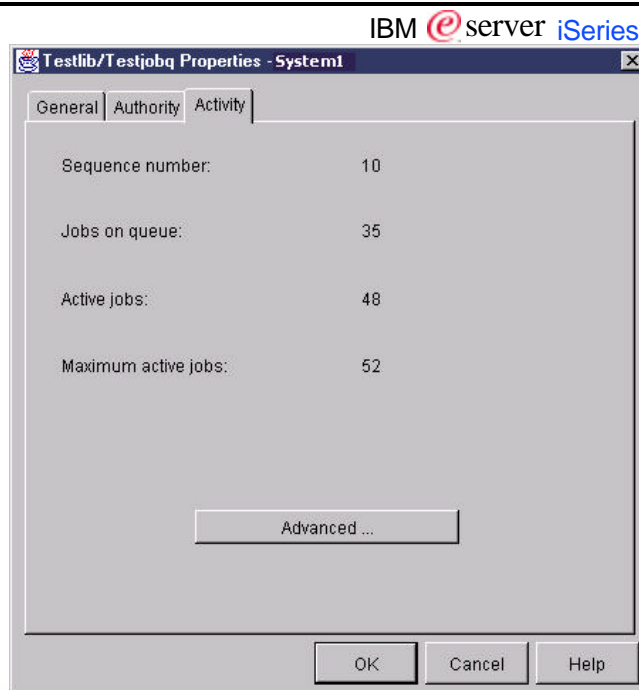
Job Queue - Activity Properties

Sequence number

Jobs on queue

Active jobs

Maximum active jobs



IBM @server. For the next generation of e-business.

© 2001 IBM Corporation. All Rights Reserved.

Job Queue - Advanced Activity Properties

Shows all the priority levels for jobs on the job queue.

Jobs currently active

Jobs waiting to run

Maximum number of jobs that can be active for each priority

Priority on Queue	Jobs on Queue	Active Jobs	Maximum Active Jobs
0	4	14	No Maximum
1	6	2	15
2	2	3	No Maximum
3	0	5	10
4	5	5	No Maximum
5	12	6	No Maximum
6	1	2	No Maximum
7	3	8	No Maximum
8	2	3	No Maximum
9	1	2	No Maximum

IBM @server. For the next generation of e-business.
© 2001 IBM Corporation. All Rights Reserved.

Subsystems

Current status of the subsystem

Name of the subsystem

Number of jobs currently running in the subsystem

Description of the subsystem

All subsystems currently active on the system

Subsystem	Status	Active Jobs	Description
Bldhpsps	Active	1	Build Subsystem
Bldhssbs	Active	1	Build Subsystem
Joybldcs	Active	1	Build Subsystem
Qbatch	Active	0	Batch Subsystem
Qcmn	Active	7	Communications Subsystem
Qctrl	Active	1	Controlling Subsystem
Qinter	Active	7	Interactive Subsystem
Qserver	Active	17	File Server Subsystem
Qsnads	Active	8	SNA Distribution Subsystem
Qspol	Active	0	Spooling Subsystem
Qsyswrk	Active	63	System subsystem
Qusrwrk	Active	10	User subsystem

IBM @server. For the next generation of e-business.
© 2001 IBM Corporation. All Rights Reserved.

Subsystem - Start

IBM @server iSeries

The STRSBS command in the GUI!

IBM @server. For the next generation of e-business.
© 2001 IBM Corporation. All Rights Reserved.

Active Subsystems

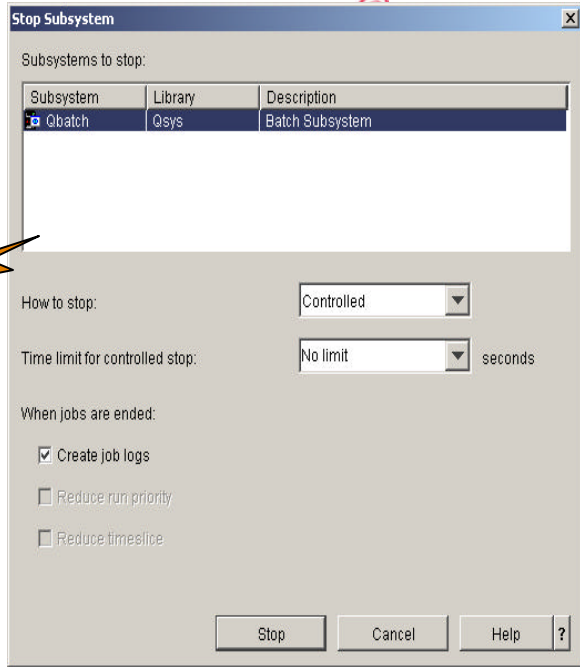
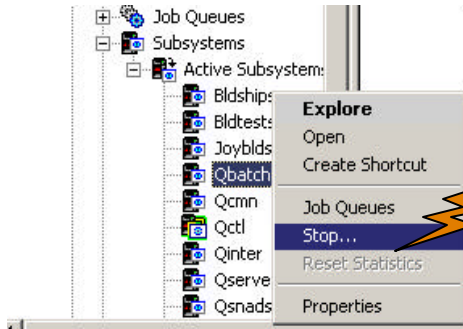
IBM @server iSeries

Menu Item	Description
Explore	Shows the list of jobs running in the subsystem in the right pane of the main Operations Navigator window.
Open	Shows the list of jobs running in the subsystem in a separate window.
Create Shortcut	Places a shortcut to this subsystem on the desktop.
Job Queues	Shows a separate window listing the job queues for this subsystem.
Stop	Ends the subsystem - Same as ENDSBS.
Properties	Shows properties for the subsystem.

Controlling subsystem has a unique icon

IBM @server. For the next generation of e-business.
© 2001 IBM Corporation. All Rights Reserved.

Subsystem - Stop

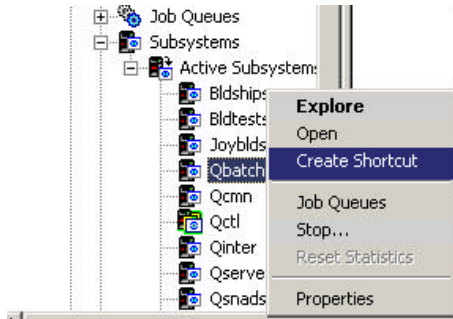


Stop subsystems in a controlled manner or stop them using the immediate option. Replaces the ENDSBS command!

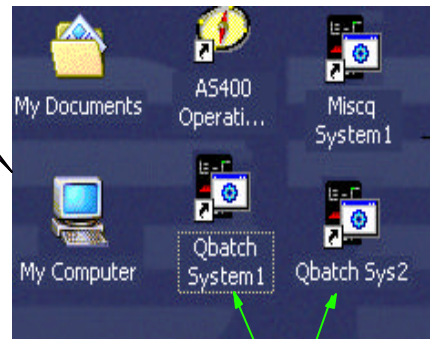
IBM @server. For the next generation of e-business.

© 2001 IBM Corporation. All Rights Reserved.

Subsystem - Create Shortcut



Shortcuts save time accessing systems in your network!



Easy access to your problem subsystems.

Fewer mouse clicks to get the list of jobs for a subsystem.

Better performance retrieving lists of jobs.

Look at Qbatch for each system in the network!

IBM @server. For the next generation of e-business.

© 2001 IBM Corporation. All Rights Reserved.

Manage the jobs on your system and stay employed

Imagine that your system runs with thousands of jobs at a time. If you used WRKACTJOB, you could bring the system to its knees.

IBM @server iSeries



~~WRKACTJOB~~



Job Name	Detailed Status	Current User	Type	CPU %
Qcmn	Waiting for dequeue	Qsys	Subsystem	0.0
Qqscstp	Waiting for request	Quser	Prestart communications	0.0
Qqpservr	Waiting for request	Quser	Prestart communications	0.0
Qqnspeingd	Waiting for request	Quser	Prestart communications	0.0
Qqnsresced	Waiting for request	Quser	Prestart communications	0.0
Qqpservr	Waiting for request	Quser	Prestart communications	0.0
Qqcrsvr	Waiting for request	Quser	Prestart communications	0.0
Qqscsrve	Waiting for request	Quser	Prestart communications	0.0

The new GUI allows you to work with the jobs in a specific subsystem!

IBM @server. For the next generation of e-business.

© 2001 IBM Corporation. All Rights Reserved.

Active Jobs

IBM @server iSeries

'Refresh' extends the time over which elapsed performance statistics are calculated

'Reset' sets elapsed time and elapsed performance statistics to zero

Job Name	Detailed Status	Current User	Type	CPU %
Qqzshr	Waiting for dequeue	Qsys	Subsystem	0.0
Qcmn	Waiting for dequeue	Qsys	Subsystem	0.0
Qqscstp	Waiting for request	Quser	Prestart communications	0.0
Qqpservr	Waiting for request	Quser	Prestart communications	0.0
Qqnspeingd	Waiting for request	Quser	Prestart communications	0.0
Qqnsresced	Waiting for request	Quser	Prestart communications	0.0
Qqpservr	Waiting for request	Quser	Prestart communications	0.0
Qqcrsvr	Waiting for request	Quser	Prestart communications	0.0
Qqscsrve	Waiting for request	Quser	Prestart communications	0.0
Qqct	Waiting for dequeue	Qsys	Subsystem	0.0
Qqsyed	Waiting for event	Qqsmr	Batch	0.0
Qqsmr	Waiting for dequeue	Qsys	Subsystem	0.0
Qqpcdev001	Waiting for workstat...	Fred	Interactive	0.0
Qqpcdev003	Waiting for collect	Fred	Interactive	0.0
Qqpcdev004	Waiting for workstat...	Fred	Interactive	0.0
Qqpcdev005	Waiting for workstat...	Fred	Interactive	0.0
Qqpcdev006	Suspended - System...	Fred	Interactive	0.0
Qqpcdev006	Waiting for workstat...	Fred	Interactive	0.0

Jobs are organized by subsystem, similar to WRKACTJOB.

IBM @server. For the next generation of e-business.

© 2001 IBM Corporation. All Rights Reserved.

Active Jobs - Features

IBM @server iSeries

Time period over which elapsed performance statistics are calculated

Easily identifiable system name

CPU percentage, just like WRKACTJOB

The user profile the job is currently running under

Different icons for important types of jobs

Server jobs are easily identified

Meaningful names replace cryptic job types. PJ does not mean the job is getting ready for bed!

Real words describe what the job is currently doing and help you determine what action to take.

Job Name	Detailed Status	Current User	Type	CPU %
Qbbatch	Waiting for dequeue	Qsys	Subsystem	0.0
Qacsopt	Waiting for lock	Fred	Prestart -Server	2.1

IBM @server. For the next generation of e-business.

© 2001 IBM Corporation. All Rights Reserved.

Active Jobs - Get a Job!

IBM @server iSeries

Find jobs quickly with the Find function.

Searches the entire list for the entered phrase, even entries not currently in view!

Job Name	Detailed Status	Current User	Type	CPU %
Qbbatch	Waiting for dequeue	Qsys	Subsystem	0.0
Qann	Waiting for dequeue	Qsys	Subsystem	0.0
Qacsopt	Waiting for request	Quser	Prestart communications	0.0
Qlcservr	Waiting for request	Quser	Prestart communications	0.0
Qnnsping	Waiting for request	Quser	Prestart communications	0.0
Qnnarsnd	Waiting for request	Quser	Prestart communications	0.0
Qncservr	Waiting for request	Quser	Prestart communications	0.0
Qncservr	Waiting for request	Quser	Prestart communications	0.0
Qncservr	Waiting for request	Quser	Prestart communications	0.0
Qcrl	Waiting for dequeue	Qsys	Subsystem	0.0
Qyssod	Waiting for event	Qpgmr	Batch	0.0
Qlnter	Waiting for dequeue	Qsys	Subsystem	0.0
Qpader001	Waiting for workabst...	Fred	Interactive	0.0

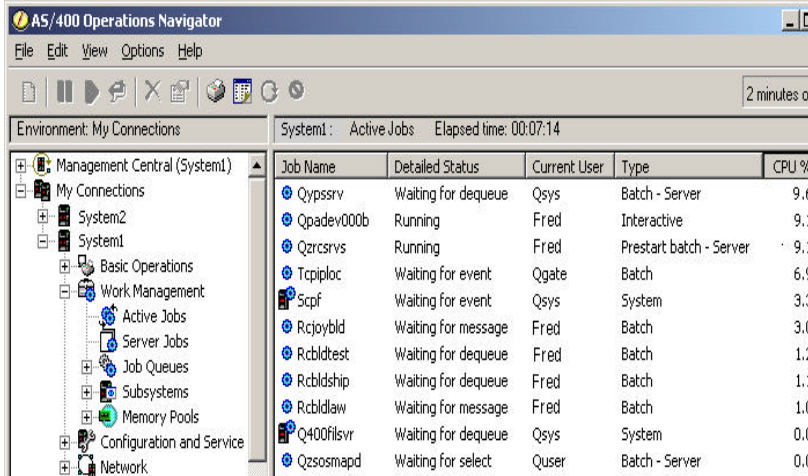
IBM @server. For the next generation of e-business.

© 2001 IBM Corporation. All Rights Reserved.

Active Jobs - Column Sort

IBM @server iSeries

Click on a column heading to sort the list in ascending order. Click the column again to sort in descending order.



Quickly find the CPU hogs!

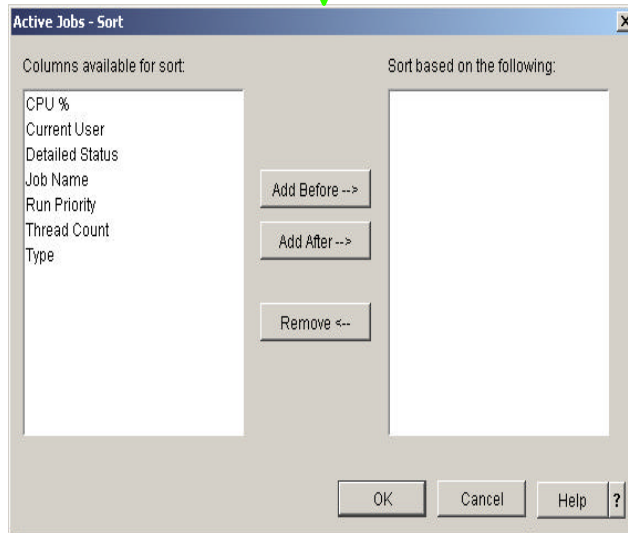
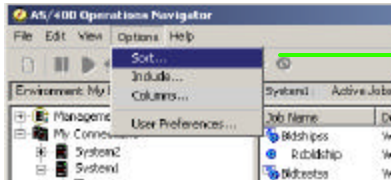


IBM @server. For the next generation of e-business.

© 2001 IBM Corporation. All Rights Reserved.

Active Jobs - Advanced Sort

IBM @server iSeries



Do complex sorts using multiple job attributes.

Values are saved for this Operations Navigator session, but not between sessions.

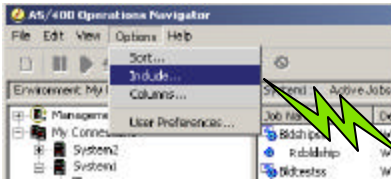
Remove all columns from right side to return to default WRKACTJOB sort.

IBM @server. For the next generation of e-business.

© 2001 IBM Corporation. All Rights Reserved.

Active Jobs - Include

IBM @server iSeries



Need to find all the batch jobs that user 'Fred' (Dan's cousin) is running? Include will return only the jobs that meet your selection criteria!

Include jobs with a specific name or generic name

Include a specific type of jobs, such as batch jobs

Include jobs that user 'Fred' is running

Values are saved between Operations Navigator sessions!

Not sure what you are looking for? Click the Browse button.

IBM @server. For the next generation of e-business.

© 2001 IBM Corporation. All Rights Reserved.

Active Jobs - Include

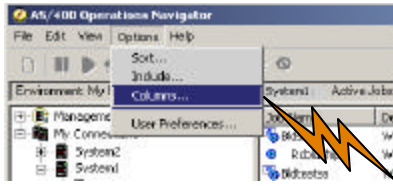
IBM @server iSeries

Name	Name of jobs to include in the list (ALL , specific name, or generic names with trailing asterisk allowed)
User	User whose jobs should be included in the list (ALL, current signed-on user, specific name, or generic name allowed)
Number	System generated job number for jobs to include in the list (ALL or a specific number)
Type	Type of jobs to include in the list (ALL, Autostart, Batch, Interactive, Prestart, System, etc.)
Subsystem	Jobs that are running under the specified subsystem or subsystems are included in the list (one or more subsystems can be specified)
Current User	Jobs running under the current user are included in the list (ALL, current signed-on user, specific name, or generic name allowed)

IBM @server. For the next generation of e-business.

© 2001 IBM Corporation. All Rights Reserved.

Active Jobs - Columns

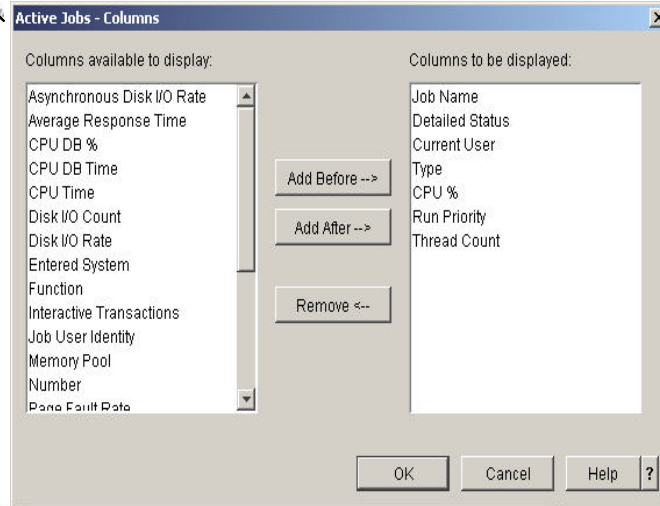


Customize the list to display the columns that are important to you, in the order you want to see them!

Select the columns that are important to you.

Use 'Add Before' and 'Add After' to specify the order the columns are displayed in.

Values are saved between Operations Navigator sessions!



IBM @server. For the next generation of e-business.

© 2001 IBM Corporation. All Rights Reserved.

Active Jobs - Columns 1

Column Name	Description
Asynchronous Disk I/O Rate	Average number per second, of Asynchronous (physical) disk I/Os performed during the elapsed time
Average Response Time	Average internal transaction response time, in seconds, during the elapsed time
CPU%	Percentage of available processing unit time used by the job during the elapsed time
CPU DB%	Percentage of total CPU used for database processing during the elapsed time
CPU DB time	Amount of CPU time, in milliseconds, used for database processing during the elapsed time
CPU Time	Amount of CPU time, in milliseconds, used by the job during the elapsed time
Current User	Name of the user under which the job is running
Detailed Status	Current detailed status of the job
Disk I/O Count	Number of disk I/O operations performed by the job during the elapsed time
Disk I/O Rate	Average number, per second, of disk I/O operations performed by the job during the elapsed time
Entered System	Date and time the job was placed on the system
Function	Last high level function initiated by the job
Interactive Transactions	Number of user interactions that have occurred for the job during the elapsed time
Job Name	Name representing the job
Job User Identity	User name by which the job is known to other jobs on the system

IBM @server. For the next generation of e-business.

© 2001 IBM Corporation. All Rights Reserved.

Active Jobs - Columns 2

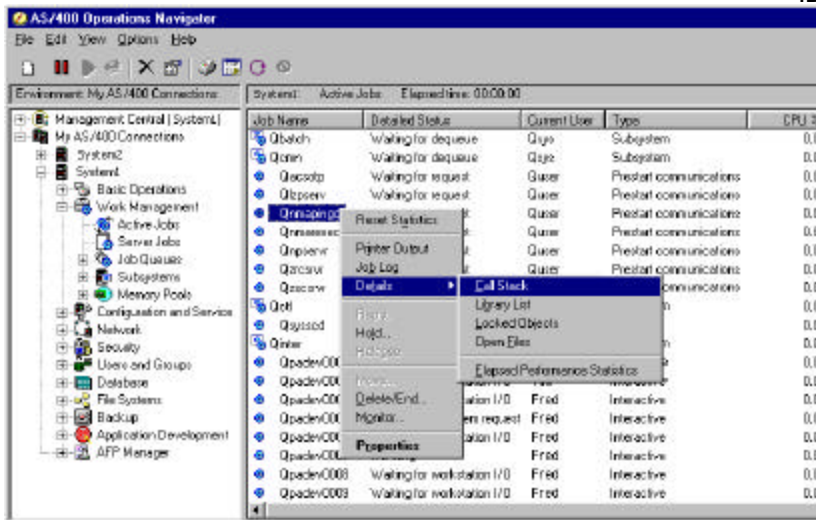
Memory Pool	Memory pool where the job is running
Number	System assigned job number
Page Fault Rate	Average number of times per second, a program references an address that is not in main storage
Run Priority	Value indicating the importance of the job relative to the other jobs running on the system
Server	Type of server job
Status	Current overall status of the job
Subsystem	Subsystem in which the job is running
Subsystem Library	Library for the subsystem description
Synchronous Disk I/O Rate	Average number, per second, of synchronous disk I/O operations performed by the job during the elapsed time
Thread count	Number of active threads in the job
Total CPU DB Time	Total amount of CPU time, in milliseconds, the job has used for database processing across all routing steps
Total CPU Time	Total amount of CPU time, in milliseconds, the job has used across all routing steps
Total Disk I/O Count	Total number of disk I/O operations performed by the job across all routing steps
Type	Type of job
User	User name under which the job was started

IBM @server iSeries

IBM @server. For the next generation of e-business.

© 2001 IBM Corporation. All Rights Reserved.

Active Job - WRKJOB Reinvented



IBM @server iSeries
Printer Output
Hold

Reset Statistics

Call Stack

Library List

Delete/End

Open Files

Release

Elapsed Performance Statistics

Reply

Monitor

Move

Locked Objects

Job Log

Properties

IBM @server. For the next generation of e-business.

© 2001 IBM Corporation. All Rights Reserved.

Active Job - Action Descriptions

Menu Item	Description
Reset Statistics	Refreshes the list and resets the time period over which statistical data is calculated
Printer Output	Displays printer output for the selected jobs
Job Log	Shows the job log for the selected jobs
Call Stack	Shows the current list of programs that are being run
Library List	Shows the library search list for the job
Locked Objects	Show the objects that the job currently has a lock on or is waiting for a lock on
Open Files	Shows the files that the job currently has open

IBM @server iSeries

Menu Item	Description
Reply	Allows you to reply to a message waiting on a job
Hold	Holds the selected jobs
Release	Releases the selected jobs
Move	Moves the selected job to another job queue
Delete/end	Deletes/ends selected jobs
Monitor	Creates and opens a new monitor
Properties	Displays the properties of the selected jobs

IBM @server. For the next generation of e-business.

© 2001 IBM Corporation. All Rights Reserved.

Active Jobs - Printer Output

IBM @server iSeries

Output name	User-specified data	User	Status	Printer	Pages per copy
Qpdsparjb		Fred	Ready	PRT01	4
Qpdsplib		Fred	Finished printing	Not Assigned	0
Qpjoblog	QPADEV0007	Fred	Ready	PRT01	3

Open the output and view its contents.

Easily change the printer.

Change when the output will be printed.

IBM @server. For the next generation of e-business.

© 2001 IBM Corporation. All Rights Reserved.

Active Jobs - Job Log

IBM @server iSeries

Job: 135186/ Fred /QPADEV0008

Message ID	Message	Date sent	Time sent
wrkspfl		04/03/01	10:09:46
dspmsg		04/03/01	10:09:43
CPF1124	Job 135186/Fred/QPADEV0008 started on 04/03/01 at 10:09:4	04/03/01	10:09:41

Find specific messages.

View detailed information about a specific message.

Print the job log.

IBM @server. For the next generation of e-business.
© 2001 IBM Corporation. All Rights Reserved.

Active Jobs - Call Stack

IBM @server iSeries

Job: Qpadev0004 User: Fred Number: 001205 Thread: Initial

Call Level	Procedure	Module	Program	Statements
9			Qwtpcget	
8	QzbsServerGetWork__FP6QzbsCBPI	Qzbscomm	Qzbscomm	1919
7	QzbsStartServerComm	Qzbscomm	Qzbscomm	917
6	main	Qzdason2	Qzdason2	455
5	_CXX_PEP	Qzdason2	Qzdason2	488
4	REFRESH_SETUP	Qzdacmdp	Qzdacmdp	19767
3	QZDACMDP	Qzdacmdp	Qzdacmdp	7443
2	main	Qzdasoit	Qzdasoinit	481
1	_CXX_PEP	Qzdasoit	Qzdasoinit	498

List can easily be changed from ascending to descending order

For you 'Trekies' out there: The Starship Enterprise!

Call Level added to make identification of an entry easier

IBM @server. For the next generation of e-business.
© 2001 IBM Corporation. All Rights Reserved.

Active Jobs - Library List

IBM @server iSeries

Library	Type	Description
Qsys	System	System Library
Qsys2	System	System Library for CPI's
Qhlpsys	System	System Library for Users
Qsursys	System	System Library for Users
Qwert	Current	Current lib for QWERT
Qqpl	User	General Purpose Library
Qtemp	User	
Lib1	User	Test library 1
Lib2	User	Test library 2
Lib3	User	Test library 3

This is the list of libraries that the job will search through when looking for a specific object.

Newly expanded User library list section can now contain up to 250 user libraries!

IBM @server. For the next generation of e-business.

© 2001 IBM Corporation. All Rights Reserved.

Active Jobs - Search Library List

IBM @server iSeries

Object: Fred*

Type: Job queue

Search

Search results: 2 objects

Object	Type	Library
Fred	Job queue	Fred
Fred2	Job queue	Fred

Debug tool - Very useful with the increased user library list size!

Generic names are supported!

Real words describe the type of object you are looking for

Wondering what object a job is actually using? Search Library List looks through the libraries in the job's library list and returns the specified objects.

Search results are returned in the order the job would find them

IBM @server. For the next generation of e-business.

© 2001 IBM Corporation. All Rights Reserved.

Active Jobs - Locked Objects

Shows the objects a job has a lock on or has requested to get a lock on.

IBM @server iSeries

Locked Object	Library	Object Type	Lock Status	Lock Request Type
Qdui80	Qsys	File - display	Held	Shared - No update
Qgmhgsd	Qsys	Panel group	Held	Shared - No update
Qgpl	Qsys	Library	Held	Shared - Read
Qhlpsys	Qsys	Library	Held	Shared - Read
Qpadev0007	Qsys	Device description - virtual display	Held	Exclusive - Read
Qsys2	Qsys	Library	Held	Shared - Read
Qsys	Qsys	Library	Held	Shared - Read
Qusrsys	Qsys	Library	Held	Shared - Read
Fred	Qsys	User profile	Held	Shared - Read
Fred	Qsys	Message queue	Held	Exclusive - No read

Need to see which other jobs on the system have a lock on an object? Right click on the object and select 'Jobs with Locks'.

IBM @server. For the next generation of e-business.

© 2001 IBM Corporation. All Rights Reserved.

Active Jobs - Jobs with Locks

IBM @server iSeries

Job Name	User	Job Status	Lock Status	Lock Request Type	Scope
Qpadev0002	Fred	Waiting for workstation I/O	Held	Shared - No update	Job
Qpadev0002	Fred	Waiting for workstation I/O	Held	Shared - No update	Job
Qpadev0003	Fred	Waiting for workstation I/O	Held	Shared - No update	Job
Qpadev0006	Fred	Waiting for workstation I/O	Held	Shared - No update	Job
Qpadev0007	Fred	Waiting for workstation I/O	Held	Shared - No update	Job
Qpadev0008	Fred	Waiting for workstation I/O	Held	Shared - No update	Job
Qpadev0009	Fred	Waiting for workstation I/O	Held	Shared - No update	Job
Scpf	Qsys	Waiting for event	Held	Shared - No update	Job

Full function list of jobs!

Shows all jobs on the system that currently have a lock on the object.

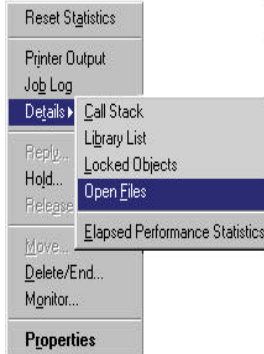
IBM @server. For the next generation of e-business.

© 2001 IBM Corporation. All Rights Reserved.

Active Jobs - Open Files

IBM @server iSeries

See the list of files that this job has opened! Check the usage of the files.



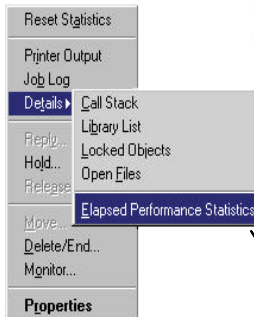
File	Library	Type	Member/Device	Record Format	I/O Count
Qaokl03a	Qusrsys	Logical	Qaokl03a		42
Qasnadsr	Qusrsys	Physical	Qasnadsr		
Qasnadsq	Qusrsys	Physical	Qasnadsq		80
Qasnadsa	Qusrsys	Physical	Qasnadsa		

IBM @server. For the next generation of e-business.

© 2001 IBM Corporation. All Rights Reserved.

Active Jobs - Elapsed Performance Statistics

IBM @server iSeries



Does one job seem to be causing problems? Monitor performance values for just the single job!

Performance statistics calculated over elapsed time		
CPU:		
Percentage:	0.9	%
Time:	291	milliseconds
Database percentage:	0.0	%
Database time:	0	milliseconds
Disk I/O rate:	31.9	per second
Synchronous:	31.9	per second
Asynchronous:	0.0	per second
Disk I/O count:	895	
Synchronous:	895	
Asynchronous:	0	
Page fault rate:	31.5	per second
Average response time:	0.5	seconds
Interactive transactions:	2	

IBM @server. For the next generation of e-business.

© 2001 IBM Corporation. All Rights Reserved.

Active Jobs - Reply

- Reset Statistics
- Printer Output
- Job Log
- Details
- Reply...**
- Hold...
- Release
- Move...
- Delete/End...
- Monitor...
- Properties



IBM @server iSeries

Reply

Message ID: CPA4086
Date sent: 3/30/01
Time sent: 3:46:43 PM

Message:
Device TAP01 was not ready or next volume was not loaded. (C R)

Message help:
Cause : Either the device TAP01 is not ready or the next tape volume is not loaded on TAP01. Recovery : Do one of the following: -- Type C to cancel processing. -- Make device TAP01 ready, and type R to try the open operation again. -- Put the next volume on device TAP01, and type R to try the open operation again. Possible choices for replying to message : R -- Try the volume open operation again. C -- Cancel processing.

Reply:
C

Reply Cancel Help ?

Easily respond to messages that a job is waiting on.

IBM @server. For the next generation of e-business.

© 2001 IBM Corporation. All Rights Reserved.

Active Jobs - Hold/Release

- Reset Statistics
- Printer Output
- Job Log
- Details
- Reply...
- Hold...**
- Release
- Move...
- Delete/End...
- Monitor...
- Properties

Hold the selected jobs.

IBM @server iSeries

Hold

Jobs to hold:

Job Name	User	Number	Type
Qpadev0007	Fred	001577	Interactive

Hold printer output for selected jobs

OK Cancel Help ?

Release jobs that have been held.

- Reset Statistics
- Printer Output
- Job Log
- Details
- Reply...
- Hold...
- Release**
- Move...
- Delete/End...
- Monitor...
- Properties

IBM @server. For the next generation of e-business.

© 2001 IBM Corporation. All Rights Reserved.

Active Jobs - Delete/End

- Reset Statistics
- Printer Output
- Job Log
- Details
- Reply...
- Hold...
- Release
- Move...
- Delete/End...**
- Monitor...
- Properties

Provides all the function of ENDJOB.

End the job either Controlled or Immediate.



IBM @server iSeries

Confirm Delete/End

Jobs to end:

Job Name	User	Number	Type
Qpadlev0007	Fred	001577	Interactive

How to end:

Time limit for controlled end: seconds

Delete printer output:

Maximum job log entries:

Action for related interactive jobs:

IBM @server. For the next generation of e-business.

© 2001 IBM Corporation. All Rights Reserved.

A Word About Monitors

IBM @server iSeries

We now interrupt our regular programming for a word about monitors.

IBM @server. For the next generation of e-business.

© 2001 IBM Corporation. All Rights Reserved.

Job Monitors

- Reset Statistics
- Printer Output
- Job Log
- Details
- Reply...
- Hold...
- Release
- Move...
- Delete/End...
- Monitor...**
- Properties

Job monitors allow you to be alerted when the jobs do not run within your predetermined metric thresholds.

IBM @server iSeries

Order entry servers Properties

General Metrics Collection Interval Actions Systems and Groups Sharing

Name: Order entry servers

Description:

Jobs to monitor Servers to monitor

Selected Jobs:

Job Name	User	Subsystem	Job Type
Orderwrite	qpgmr	Qsattr	Batch
Orderinput	qpgmr	Qsattr	Batch
Orderman	qpgmr	Qsattr	Batch

Job name: All

User: All

Subsystem: All

Job type: All

Jobs will be monitored

OK Cancel Help

IBM @server. For the next generation of e-business.

© 2001 IBM Corporation. All Rights Reserved.

Job Monitors - Metrics

IBM @server iSeries

Order entry servers Properties

General Metrics Collection Interval Actions Systems and Groups Sharing

Available Metrics:

- Job Names Values
- CPU Percent Utilization
- Logical I/O Rate
- Disk I/O Rate
- Communications I/O Rate
- Transition Rate
- Transition Time
- Thread Count
- Page Fault Rate
- Summary Elements Values
- Logical I/O Rate
- Peak I/O Rate

Selected Metrics:

- Job Count
- Job Log Message
- Job Status
- Summary Elements Values
- CPU Percent Utilization**

Threshold 1 Threshold 2

Enable trigger: [checked] 10 percent busy

Duration: 1 intervals

OS/400 trigger command: CALL PGM(QMND01P)PQR) PARM(SEVENTYPE) Prmpt...

Enable reset: [checked] 5 percent busy

Duration: 1 intervals

OS/400 reset command: CALL PGM(QMND01P)PQR) PARM(SEVENTYPE) Prmpt...

OK Cancel Help

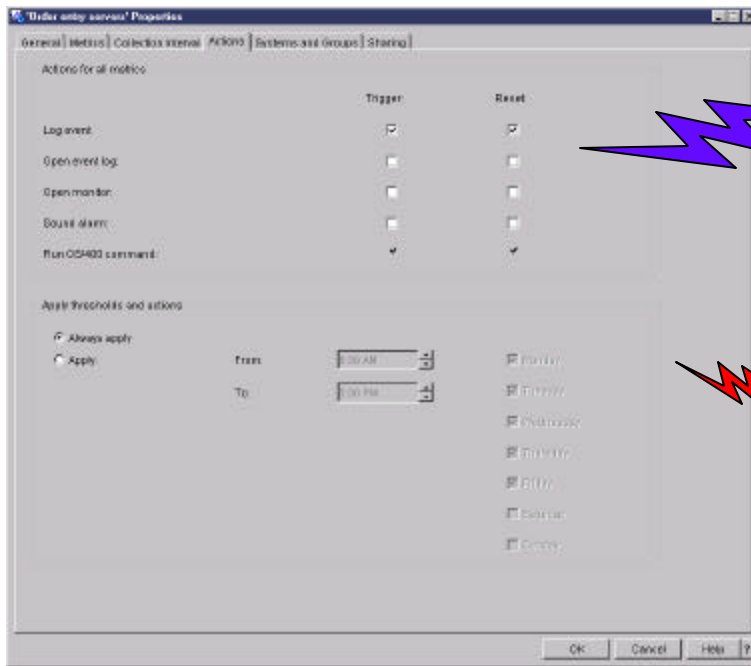
Select the metrics to use in monitoring for the selected jobs

Enable triggering and automation to occur when criteria is met

IBM @server. For the next generation of e-business.

© 2001 IBM Corporation. All Rights Reserved.

Job Monitors - Actions



IBM @server iSeries

Select actions to let you know jobs need attention

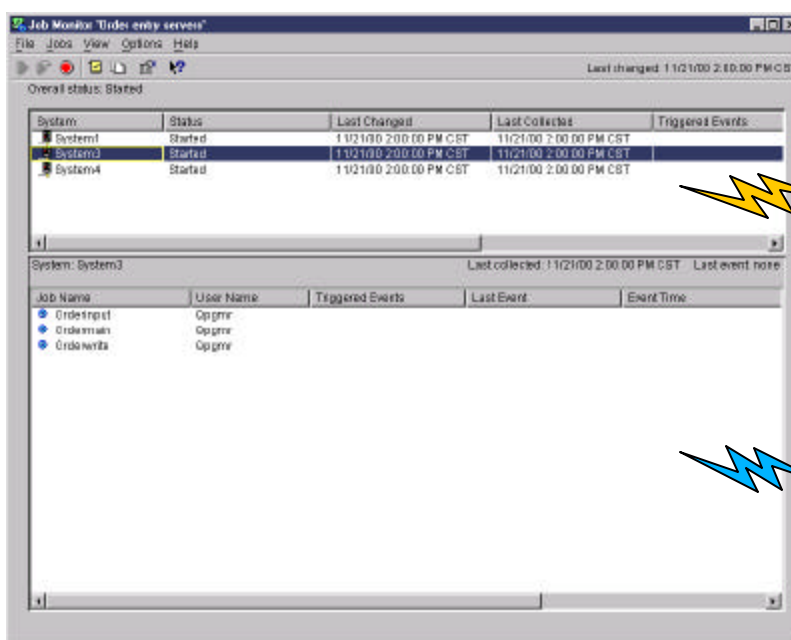
Decide when the monitor should "pay attention".

This way the monitor always runs, but only triggers during critical times in the day

IBM @server. For the next generation of e-business.

© 2001 IBM Corporation. All Rights Reserved.

Job Monitors - Status



IBM @server iSeries

The systems the jobs are being monitored on. Also shows system level status.

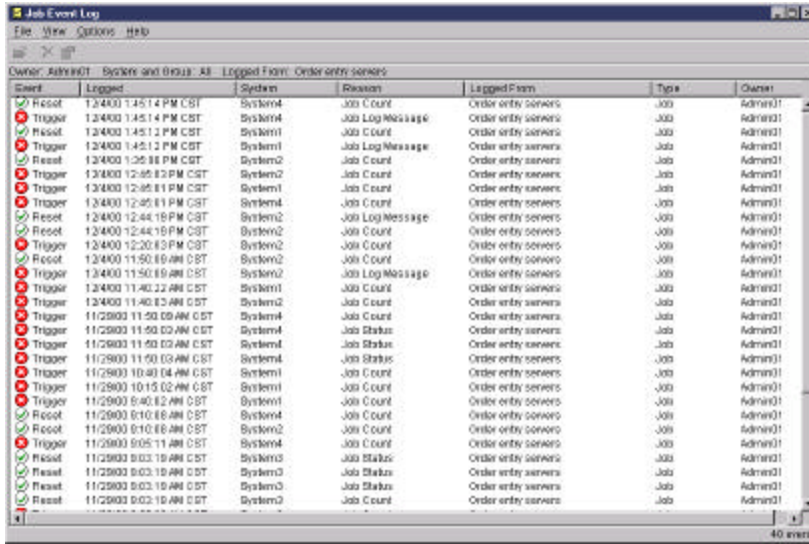
Shows the jobs that matched the metric criteria. Select a job and work with it using all Active Job actions!

IBM @server. For the next generation of e-business.

© 2001 IBM Corporation. All Rights Reserved.

Job Monitors - Event Log

IBM @server iSeries



Events showing when a monitor triggered and reset.

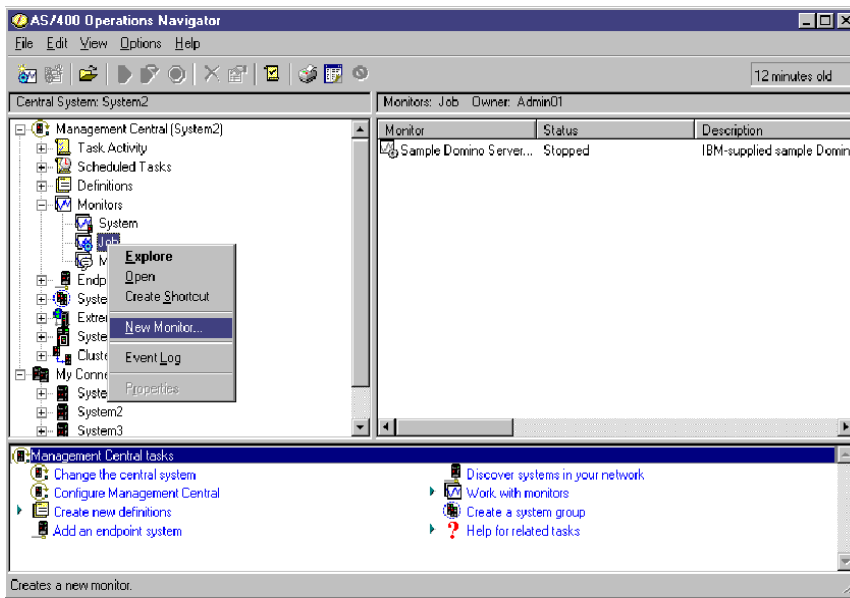
View all job monitor events in one window!

IBM @server. For the next generation of e-business.

© 2001 IBM Corporation. All Rights Reserved.

Job Monitors - Location

IBM @server iSeries



IBM @server. For the next generation of e-business.

© 2001 IBM Corporation. All Rights Reserved.

Message Monitors

IBM @server iSeries

Monitor messages from any message queue.

You can specify which messages that the monitor will trigger on. This can be done by specifying one or more message selection criteria.

Run a command when trigger occurs, or even remove the message

IBM @server. For the next generation of e-business.
© 2001 IBM Corporation. All Rights Reserved.

Other Management Central Functions

IBM @server iSeries

Here are other Management Central functions that are very useful for managing your work across multiple systems:


- Monitor jobs
- Monitor messages
- Monitor system level performance metrics
- Compare and Update system values
- Graphically view performance metrics over long periods of time
- Run commands
- Manage products, fixes, users and groups
- Distribute files and folders

www.ibm.com/eserver/iseries/sftsol/mgmtcentral.htm


IBM @server. For the next generation of e-business.

© 2001 IBM Corporation. All Rights Reserved.

Now Back To Active Jobs




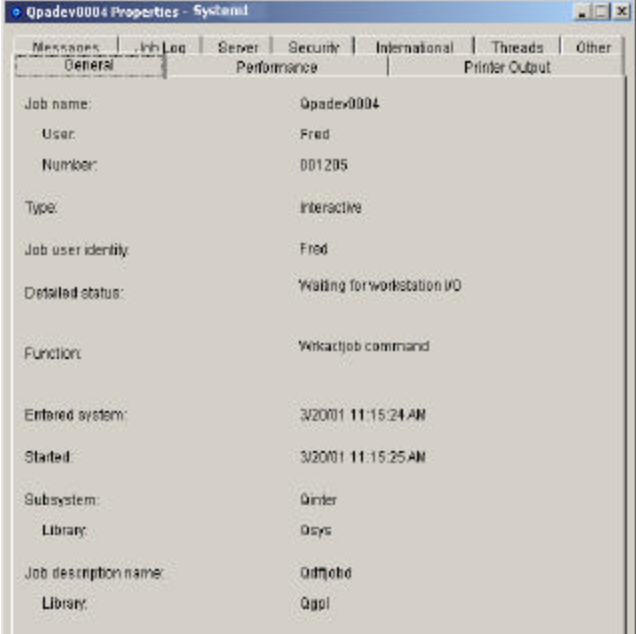
We now return to Active Jobs




© 2001 IBM Corporation. All Rights Reserved.

Active Jobs - General Properties



Job Name		Type
Job User Identity		Function
Detailed Status		Started
Entered System		Job Description Name
Subsystem		



© 2001 IBM Corporation. All Rights Reserved.

Active Jobs - Performance Properties

Run priority

Timeslice

Default wait time

CPU time - total

CPU time - total database

CPU time - maximum

Memory pool

Total disk I/O count

Total lock wait time

Temporary storage used

Temporary storage maximum

IBM @server. For the next generation of e-business.

© 2001 IBM Corporation. All Rights Reserved.

Active Jobs - Printer Output Properties

Printer

Output queue

Priority on output queue

Printed page footer

Format when using Print key

IBM @server. For the next generation of e-business.

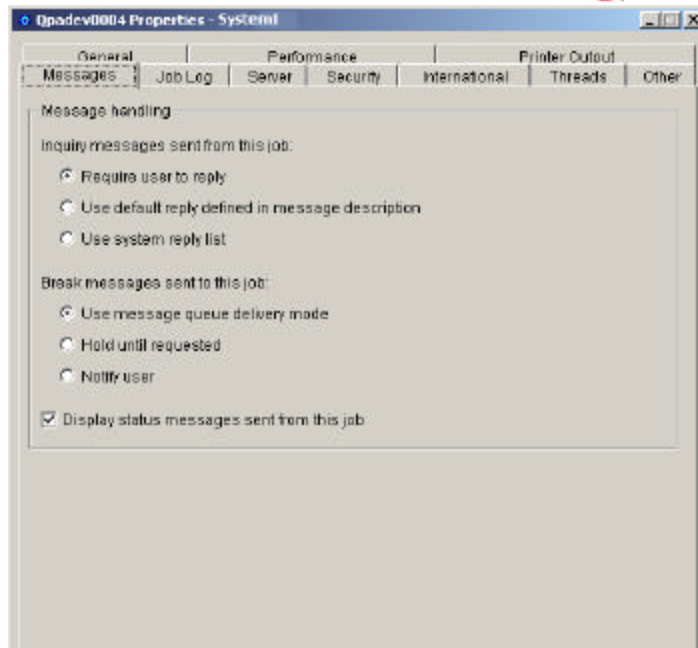
© 2001 IBM Corporation. All Rights Reserved.

Active Jobs - Messages Properties

Inquiry messages handling

Break message handling

Status message handling



IBM @server. For the next generation of e-business.

© 2001 IBM Corporation. All Rights Reserved.

Active Jobs - Job Log Properties

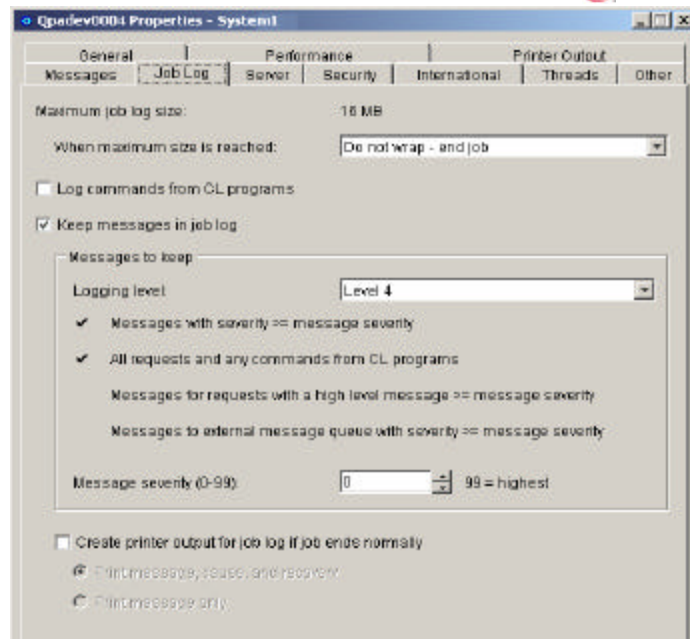
Maximum job log size

Maximum job log action

Log CL messages

Keep messages in job log

Create printer output for job log if job ends normally



IBM @server. For the next generation of e-business.

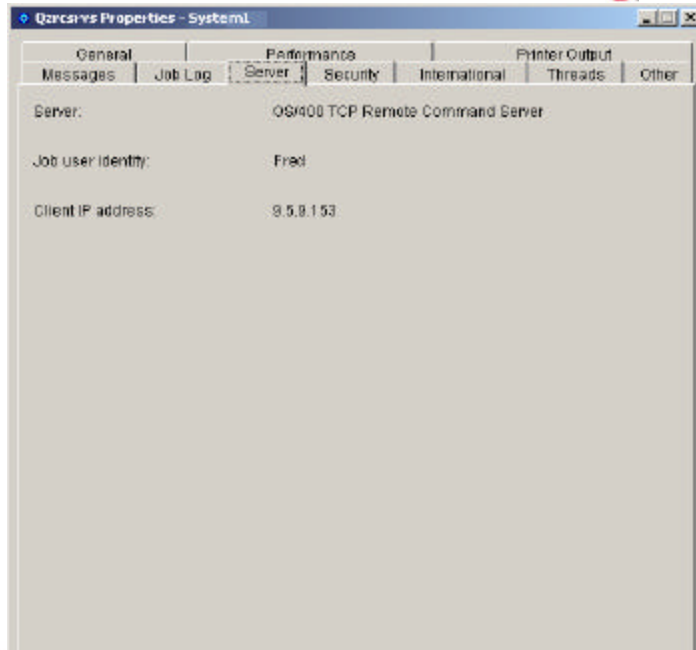
© 2001 IBM Corporation. All Rights Reserved.

Active Jobs - Server Properties

Server

Job user identity

Client IP address



IBM @server. For the next generation of e-business.

© 2001 IBM Corporation. All Rights Reserved.

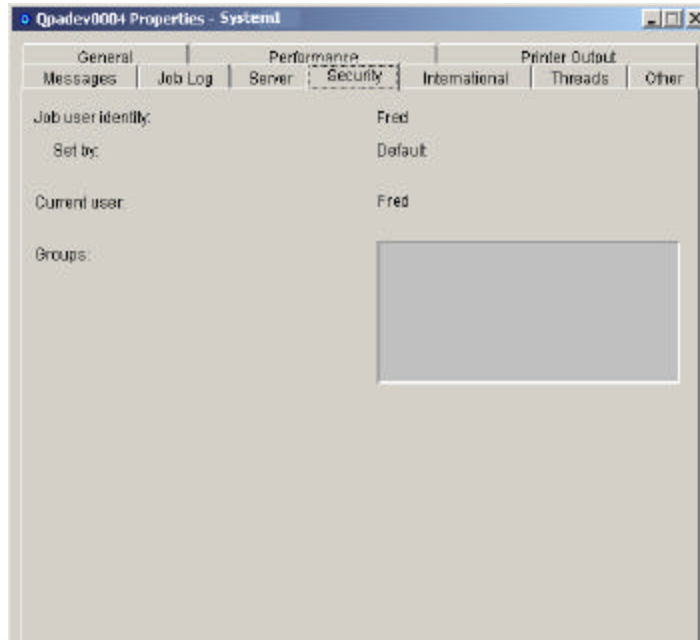
Active Jobs - Security Properties

Job user identity

Job user identity setting

Current user

Groups



IBM @server. For the next generation of e-business.

© 2001 IBM Corporation. All Rights Reserved.

Active Jobs - International Properties

Labels on the left:

- Date format
- Date separator
- Time separator
- Decimal format
- Coded character set ID
- Default coded character set ID

Labels on the right:

- Character identifier control
- Country
- Language
- Sort sequence table
- Double-byte capable

IBM @server. For the next generation of e-business.
© 2001 IBM Corporation. All Rights Reserved.

Active Jobs - Threads Properties

Labels on the left:

- Allow multiple user threads
- Current threads
- Maximum threads

IBM @server. For the next generation of e-business.
© 2001 IBM Corporation. All Rights Reserved.

Active Jobs - Other Properties

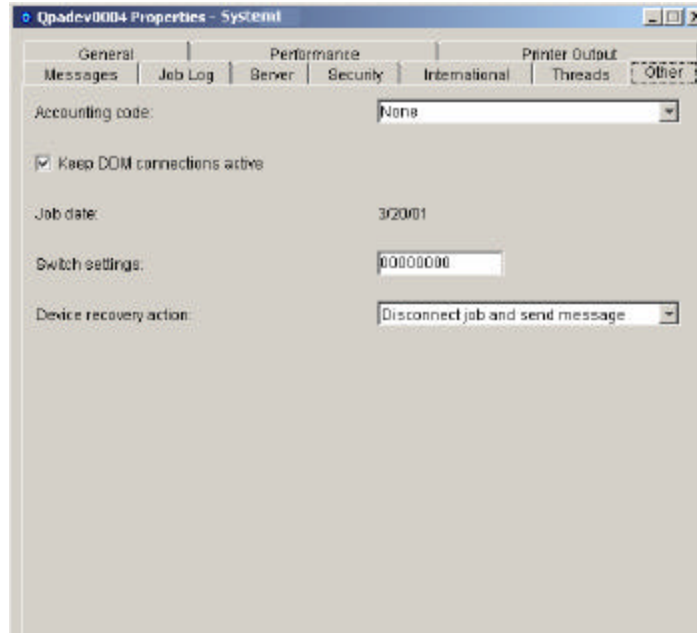
Accounting code

Keep DDM connections active

Job date

Switches settings

Device recovery action



IBM @server. For the next generation of e-business.

© 2001 IBM Corporation. All Rights Reserved.

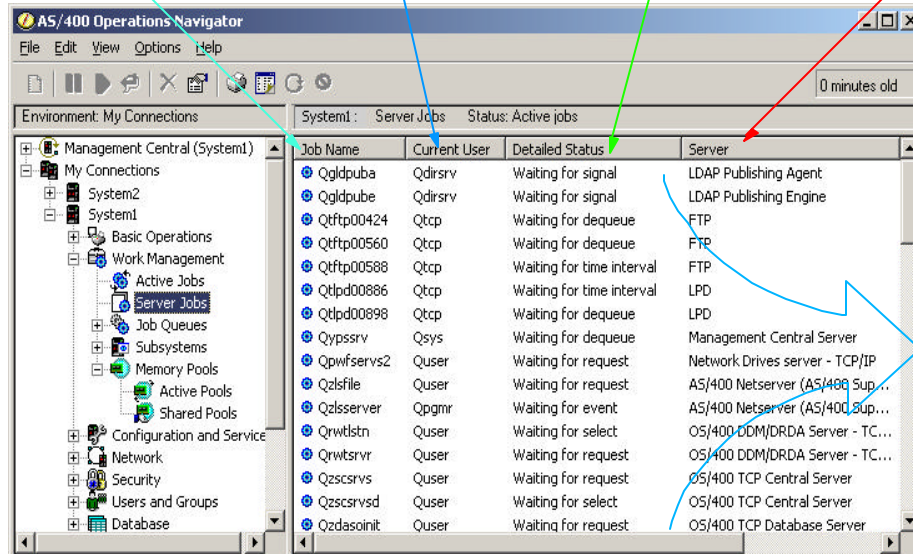
Server Jobs

Job name

User this server is doing work for

Current server status

Description of the type of server



IBM @server. For the next generation of e-business.

© 2001 IBM Corporation. All Rights Reserved.

Memory Pools

IBM @server iSeries

Real name

User-defined description

Current pool size

Number of threads currently running in the pool

AS/400 Operations Navigator

Environment: My Connections System1: Active Pools Elapsed time: 00:00:01

Pool	Description	Current Size (MB)	Current Threads
Machine	Used by internal machine functions	78.38	42
Base	Default system pool	155.38	118
Interactive	Used for interactive work	26.00	6
Spool	Used for printing	.25	0

Organized similar to the WRKSYSSTS command.

IBM @server. For the next generation of e-business.

© 2001 IBM Corporation. All Rights Reserved.

Memory Pools - Features

IBM @server iSeries

Shows all jobs currently running in the memory pool

Shows all subsystems whose jobs run in the memory pool

Displays additional information about the memory pool

Deallocates the memory pool

AS/400 Operations Navigator

Environment: My Connections System1: Active Pools Elapsed time: 00:00:01

Pool	Description	Current Size (MB)	Current Threads
Machine	Used by internal machine functions	78.38	42
Base	Default system pool	155.38	118
Interac	interactive work	26.00	6
Spool	printing	.25	0

Jobs

Subsystems

Deallocate...

Properties

IBM @server. For the next generation of e-business.

© 2001 IBM Corporation. All Rights Reserved.

Memory Pools - Shared Pools

IBM @server iSeries

Real name User-defined description Current status Defined size Current size

Pool	Description	Status	Defined Size...	Current Size (MB)
Machine	Used by internal machine functions	Active	86.41	86.41
Base	Default system pool	Active	147.35	147.35
Interactive	Used for interactive work	Active	26.00	26.00
Spool	Used for printing	Active	.25	.25
Shared 1		Inactive	.00	.00
Shared 2		Inactive	.00	.00
Shared 3		Inactive	.00	.00
Shared 4		Inactive	.00	.00
Shared 5		Inactive	.00	.00
Shared 6		Inactive	.00	.00
Shared 7		Inactive	.00	.00
Shared 8		Inactive	.00	.00
Shared 9		Inactive	.00	.00

IBM @server. For the next generation of e-business.
© 2001 IBM Corporation. All Rights Reserved.

Memory Pool - General Properties

IBM @server iSeries

Pool name Changeable pool description Status

Pool name: Interactive

Description: Used for interactive work

Status: Active

IBM @server. For the next generation of e-business.
© 2001 IBM Corporation. All Rights Reserved.

Memory Pools - Configuration Properties

Change minimum size

Current size

Reserved size

Maximum eligible threads

Current threads

Current ineligible threads

Change paging option

The screenshot shows the 'Configuration' tab of the 'Base Properties - System1' window. It displays the following settings:

Category	Property	Value	Unit
Size	Minimum:	13.00	MB
	Current:	155.38	MB
	Reserved:	.08	MB
Activity level	Maximum eligible threads:	15	
	Current threads:	118	
	Current ineligible threads:	0	
Paging option:		Fixed	

IBM @server. For the next generation of e-business.
© 2001 IBM Corporation. All Rights Reserved.

Memory Pools - Performance Properties

State transactions per minute

Active->Wait

Wait->Ineligible

Active->Ineligible

Database faults per second

Database pages per second

Non-database faults per second

Non-database pages per second

The screenshot shows the 'Performance' tab of the 'Base Properties - System1' window. It displays the following performance metrics:

Category	Property	Value
State transitions per minute	Active -> Wait:	103.7
	Wait -> Ineligible:	.0
	Active -> Ineligible:	.0
Database faults per second	Database faults per second:	.0
	Database pages per second:	.0
Non-database faults per second	Non-database faults per second:	131.3
	Non-database pages per second:	.0

IBM @server. For the next generation of e-business.
© 2001 IBM Corporation. All Rights Reserved.

Memory Pools - Tuning Properties

System tuners setting

Tuning values

Priority

Minimum size

Maximum size

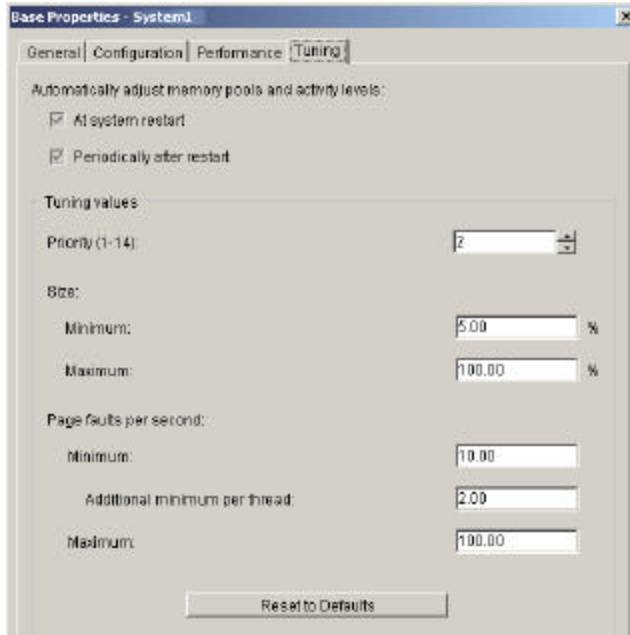
Page faults per second

Minimum

Additional minimum per thread

Maximum

Reset defaults



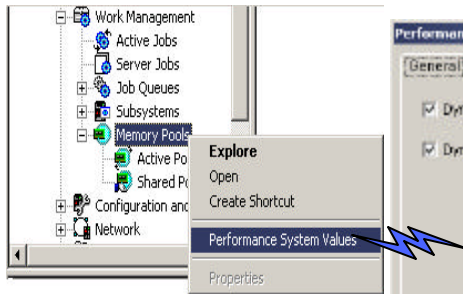
IBM @server iSeries

IBM @server. For the next generation of e-business.

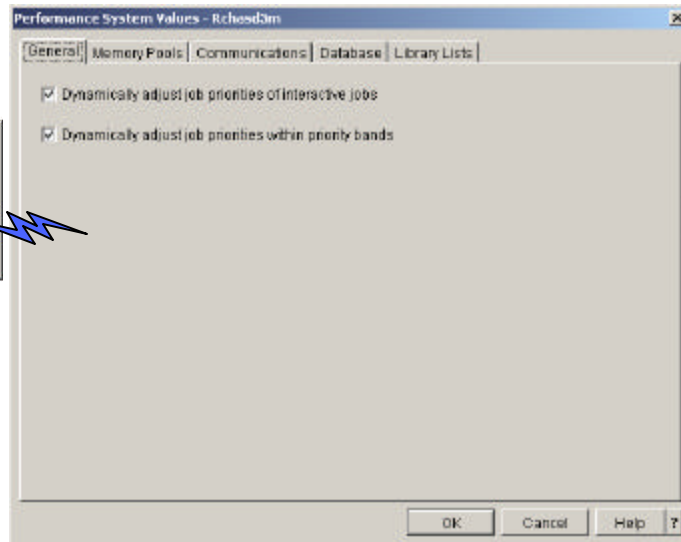
© 2001 IBM Corporation. All Rights Reserved.

Memory Pools - System Values

IBM @server iSeries



Easy access to the System Values that control performance.



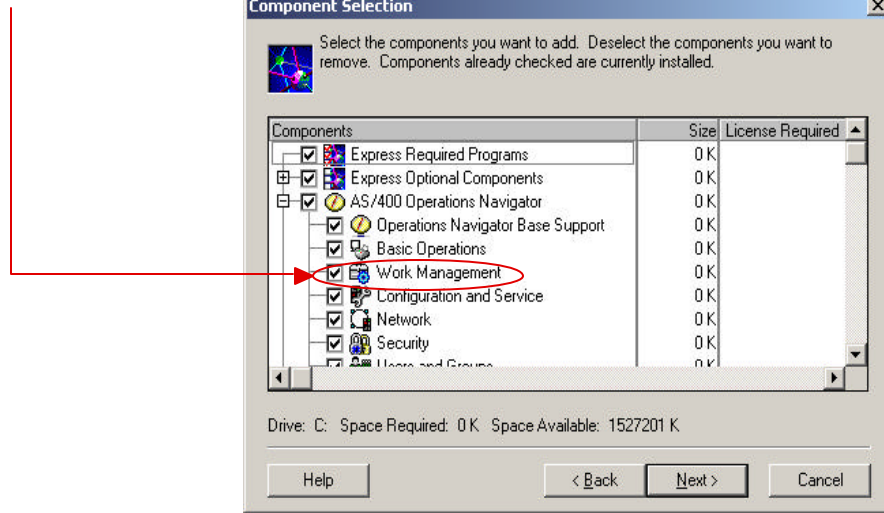
IBM @server. For the next generation of e-business.

© 2001 IBM Corporation. All Rights Reserved.

How Do I Get this Support?

IBM @server iSeries

Great question! Select the Work Management component during selective install of V5R1 Operations Navigator.



IBM @server. For the next generation of e-business.

© 2001 IBM Corporation. All Rights Reserved.

In Conclusion

IBM @server iSeries

More functionality than previous Operations Navigator support.

More flexible than green screen.

Powerful time saving tools to help identify and solve problems.

The function you have been waiting for has arrived!



Management Central integration!

See, Dan likes it! So will you.

IBM @server. For the next generation of e-business.

© 2001 IBM Corporation. All Rights Reserved.

Other Information

IBM  iSeries

Work Management:

Web page: <http://publib.boulder.ibm.com/pubs/html/as400/v5r1/ic2924/info/rzaks/rzaks1.htm>

Management Central:

Web page: www.ibm.com/eserver/iseries/sftsol/mgmtcentral.htm

Redbook: Management Central: A Smart Way to Manage AS/400 Systems, SG24-5407-00

View online at: www.redbooks.ibm.com/pubs/pdfs/redbooks/sg245407.pdf

IBM  For the next generation of e-business.

© 2001 IBM Corporation. All Rights Reserved.

Trademarks and Disclaimers

IBM  iSeries

© Copyright International Business Machines Corporation 2001

References in this document to IBM products or services do not imply that IBM intends to make them available in every country.

The following terms are trademarks or registered trademarks of International Business Machines Corporation in the United States, other countries, or both:

AS/400	IBM Logo
AS/400e	iSeries
e-business logo	OS/400
IBM	

Lotus, Freelance, and Word Pro are trademarks of Lotus Development Corporation in the United States, other countries, or both.

Tivoli and NetView are trademarks of Tivoli Systems Inc. in the United States, other countries, or both.

C-bus is a trademark of Corollary, Inc. in the United States, other countries, or both.

Java and all Java-based trademarks and logos are trademarks or registered trademarks of Sun Microsystems, Inc. in the United States, other countries, or both.

Microsoft, Windows, Windows NT, and the Windows logo are trademarks of Microsoft Corporation in the United States, other countries, or both.

PC Direct is a trademark of Ziff Communications Company in the United States, other countries, or both and is used by IBM Corporation under license.

ActionMedia, LANDesk, MMX, Pentium and ProShare are trademarks of Intel Corporation in the United States, other countries, or both.

UNIX is a registered trademark of The Open Group in the United States and other countries.

SET and the SET Logo are trademarks owned by SET Secure Electronic Transaction LLC.

Other company, product and service names may be trademarks or service marks of others.

Information is provided "AS IS" without warranty of any kind.

All customer examples described are presented as illustrations of how those customers have used IBM products and the results they may have achieved. Actual environmental costs and performance characteristics may vary by customer.

Information in this presentation concerning non-IBM products was obtained from a supplier of these products, published announcement material, or other publicly available sources and does not constitute an endorsement of such products by IBM. Sources for non-IBM list prices and performance numbers are taken from publicly available information, including vendor announcements and vendor worldwide homepages. IBM has not tested these products and cannot confirm the accuracy of performance, capability, or any other claims related to non-IBM products. Questions on the capability of non-IBM products should be addressed to the supplier of those products.

All statements regarding IBM future direction and intent are subject to change or withdrawal without notice, and represent goals and objectives only. Contact your local IBM office or IBM authorized reseller for the full text of the specific Statement of Direction.

Some information in this presentation addresses anticipated future capabilities. Such information is not intended as a definitive statement of a commitment to specific levels of performance, function or delivery schedules with respect to any future products. Such commitments are only made in IBM product announcements. The information is presented here to communicate IBM's current investment and development activities as a good faith effort to help with our customers' future planning.

Performance is based on measurements and projections using standard IBM benchmarks in a controlled environment. The actual throughput or performance that any user will experience will vary depending upon considerations such as the amount of multiprogramming in the user's job stream, the I/O configuration, the storage configuration, and the workload processed. Therefore, no assurance can be given that an individual user will achieve throughput or performance improvements equivalent to the ratios stated here.

Photographs shown are of engineering prototypes. Changes may be incorporated in production models.

IBM  For the next generation of e-business.

© 2001 IBM Corporation. All Rights Reserved.