

IBM *@server*

*Integrated Application Data and Transaction Server
Products and Services*



CATALOG

Canadian Version

SPRING/SUMMER 2002



Now your IBM *@server* can take even better care of itself

See the benefits of server self-management and self-protection inherent in eLiza technology.

Page 8



Safeguard data with TotalStorage™ solutions

Consolidate your storage with IBM's multiplatform backup of your enterprise.

Page 5

Upgrades/ Features

Pages 9-14

TotalStorage™

Pages 4-7

**WITH SO MUCH TO WATCH OVER,
HOW WILL YOU KEEP IT ALL SECURE?**

LET IBM *@server* SECURE YOUR e-business WITH OPEN, FLEXIBLE PROTECTION.

visit

ibm.com/shop/ca/iseries

call 800 426-2255

It's easy to order with IBM Everything you need... fast



Phone

Call 800 426-2255 (800 IBM-CALL),
Monday-Friday 8AM - 8PM (ET)



Fax

800 267-5185

Write your customer number, name and phone number on one of your company's purchase orders and fax it to us.



Web

ibm.com

ibm.com is the fast, easy, secure way to order on-line from IBM. Find the product you're looking for and just add it to your shopping cart. It's that easy! You can shop on-line 24 hours a day (your order will be processed Monday to Friday between the hours of 8AM - 8PM ET). We accept credit cards and purchase orders.

Or send us an e-mail to
ibm_direct@ca.ibm.com



Mail

Send purchase order to:
ibm.com Center
IBM Canada Ltd.
P.O. Box 41016 STN BRM B
Toronto, ON M7Y 7G6
Department Code AC202



Local IBM Representative

Your local IBM Marketing team will continue to support you with any IBM product you select from this catalog. For the marketing representative nearest you, dial **800 426-2255**.



Your IBM Business Partner

You may find it convenient to order your catalog products through your IBM Business Partner*. (Prices for products available from Business Partners may vary.)

No-charge shipping

You pay no shipping charges on most products in this catalog (for normal delivery). No shipping fees means more money back into your business.

QuickShip delivers overnight

Many products in this catalog are eligible for QuickShip delivery. Place your order by 1:00PM (ET) and we'll ship your products the same day, delivering them within 3 days. Next day delivery subject to charge.

"Test-drive our Software" software guarantee

AS/400* and iSeries Software and selected IBM licensed programs come with a two-month, unconditional guarantee. During the two-month guarantee period, you may discontinue the software for any reason and IBM will credit you for its full price.

Backed by IBM

Every IBM product in this catalog is backed by an IBM Limited Warranty. For IBM hardware products, if the product does not perform as specified during its warranty period, IBM will repair it or replace it. If we are unable to do either of these, we will refund your money. The warranty period for new iSeries and AS/400 hardware products is one year and includes 7-day-a-week, 24-hour service.

See the IBM Limited Warranty for full details and limitations. Complete documentation regarding limited warranties is available by calling 800 426-2255. Non-IBM products are provided on an "as is" basis, but may be covered by the appropriate manufacturer's warranty.

Reap the benefits from IBM Global Financing-Canada

We offer one-stop financing for your total solutions - hardware, software, maintenance, training and services. Available through IBM and IBM Business Partners. We can help you free up your cash and manage your budget by arranging IBM financing at extremely competitive rates. For more information visit **ibm.com/ca/leasing**, e-mail ibmlease@ca.ibm.com or call 800-426-2255 ext. 710.

FCC Classifications:

This catalog contains products classified under Federal Communications Commission (FCC) regulations. Product classifications are defined as follows:

FCC Class A - Suitable for non-residential use. See product documentation for complete FCC statements.

FCC Class B - Suitable for home or office use. See product documentation for complete FCC statements. NOTE: Installing an FCC Class A adapter in an FCC Class B system changes the system classification to FCC Class A and makes it unsuitable for use in a residential environment.

All iSeries and AS/400 system products are Class A except for the following Class B products: Models 600, S10 and 9401-150, UPS models 9910-080 and 9910-140, E and G Series monitors.

Availability and Limitations:

The software and hardware products in this catalog are available through July 31, 2002. The most current edition of this IBM Catalog supersedes any

previous edition of this catalog. Prices and charges in this catalog are subject to change without notice and do not include applicable sales taxes. Products may be withdrawn at any time. IBM is not responsible for printing errors in this catalog which result in pricing or information inaccuracies. IBM hardware products are manufactured from new parts, or new and used parts. In some cases, the hardware may have been previously installed. Regardless, our warranty terms apply. All orders are subject to normal IBM credit approval. All performance data contained in this publication was obtained in a specific operating environment and is presented as an illustration only. Results obtained in other environments may vary. Any Web-based access charges are the responsibility of the customer and not IBM Corporation or its subsidiaries.

Agreements and Warranties

Products featured in this catalog are offered under the terms of either the IBM Customer Agreement (ICA) or the IBM International Program License Agreement (IPLA) for the use of commercial customers and are not for resale. Non-IBM programs and products are provided on an "as-is" basis. However, non-IBM manufacturers or suppliers may provide their own warranties. Program warranty

information is included with the program or in the IBM Customer Agreement. Complete documentation, including contracts, warranties, prices, volume discounts and technical descriptions are available by phone, fax or mail. Simply dial 800 IBM-CALL.

Manufacturer's and Warranty

Manufacturer's warranty service and support for some non-IBM products are provided directly by the manufacturer.

No-Risk Test Period

Many IBM software programs come with a two month test period. During this period, you can try the software on your system with your people and your peripherals. If you are dissatisfied for any reason, simply fax us at 800 565-6612 and return the program. We'll credit your account, no questions asked. With this money-back test period, you risk nothing when you try IBM software.

Questions?

We're always ready to help

Our iSeries and AS/400 sales specialists are just a phone call away with the latest product information and technical advice. Just dial 800 426-2255 with any questions you may have about our products and services. We'll help you select and configure the right solutions for your needs.

Charge it

You can easily charge your purchases under \$10,000 to the personal or corporate card of your choice: American Express, MasterCard or Visa.

Not looking to buy? Rent it

Are you facing a peak business period or short-term workload beyond the scope of your current computing resources? Our short-term hardware rental option is the perfect solution. It also lets you try out needed IBM hardware before making a purchase decision.

Product info at your fingertips

The latest iSeries and AS/400e product information is available at:

- IBM AS/400 Web site: ibm.com/series
- Shop IBM e-commerce Web site: ibm.com
- Information subscription service: ibm.com/source/world/
- IBM Web site: ibm.com/ca
- IBM On-line catalog: ibm.com/servers/eserver/ecatalog








If you don't see it, call

The programs and products available in this catalog represent only a portion of the iSeries and AS/400 hardware and software from IBM.

Volume discounts

Many business customers enjoy significant savings through IBM volume discounts. If you're one of them, we'll be happy to honor your existing discount arrangements. Just give us a call.

Watch for these icons:

 <p>QuickShip 24 hours</p> <p>QuickShip Service can ship your product within 24 hours of your order</p>	 <p>Custom QuickShip 7 days</p> <p>Custom QuickShip Service can ship your product within 7 days of your order</p>	 <p>New</p> <p>Newly announced product or model</p>	 <p>Product Update</p> <p>Recently updated product</p>	 <p>Reduced Prices</p> <p>Prices on the product or service have recently been reduced</p>
 <p>Limited Warranty See Below</p> <p>Warranty of your product</p>	 <p>Software Subscription</p> <p>Software updates</p>			

Contents

2 How to Order

4 TotalStorage

- 4 Tape, DVD
- 5 IBM Ultrium Tape Family
- 6 Tape Subsystems
- 7 Enterprise Storage Server

4
TotalStorage

9 Server Features

- 9 Upgrade Redirect
- 10 8xx and 270 Features
- 12 PCI Expansion Tower Conversions
- 13 7xx/6xx/Sxx Features
- 14 250/170 Features

9
Server Features

15 Peripherals

- 15 IBM Printers
- 16 Infoprint 1000 Family
- 16 Infoprint 70
- 17 Printers-at-a-Glance
- 18 Uninterruptible Power System (UPS)
- 19 Monitors (Color)
- 19 5250 Emulation Family

15
Peripherals

21 Services

- 22 IBM Global Services
- 22 e-business Services
- 23 System and Performance Services
- 24 Support Services

21
Services

27 Index

27
Index

*iSeries rewritable DVD drive***IBM TotalStorage™ 7210 External DVD-RAM Drive**

- **Read/Write DVD-ROM and DVD-Ram; Read CD-ROM, CD-R, and CD-RW**
- **Read data rate up to 3.6MBps average sustained**
- **26GB compressed data capacity per DVD-RAM cartridge.**

DVD-RAM is a new optical technology that advances the capabilities that CD-ROM brought to the iSeries. It provides the software distribution capability of CD-ROM, but can also write DVD media.

The capacity of the media is eight times larger than CD-ROM. The speed at which it transfers data from the media is roughly equivalent to a 24X speed CD-ROM, or about 3.6MB/sec average sustained.

This DVD-RAM function is also available as an integrated feature (#4487 or #4587) in iSeries servers.

Type	Mod	Description	Price \$
7210	025	External DVD-RAM	2,260

*Need 1/4" tape drive for compatability?***IBM TotalStorage™ 7207 1/4" Cartridge Tape Drive**

12 Month
Limited
Warranty



- **Up to 8GB capacity**
- **Up to 760KB per second Data transfer rate.**

The 7207 Model 122 is an external desk-top solution for reliable, affordable, entry-level tape storage. With 2:1 data compression, a data capacity of up to 8GB and a data transfer rate of up to 760 kilobytes per second can be attained.

Requirements:	OS/400 V4R2 or later and feature 2718
----------------------	---------------------------------------

For more information - ibm.com/storage/hardsoft/tape/7207

Type	Mod	Description	Price \$
7207	122	4GB External 1/4" Tape Drive	3,700

Need Storage Area Network (SAN)?

The iSeries can connect to a SAN environment – but such connections may not be needed. The iSeries builds upon SAN concepts and can itself provide both storage and server consolidation functions. Many of the most powerful external SAN capabilities are built into the iSeries.

The iSeries provides powerful graphical disk management tools and supports up to 19TB of direct-attached disk capacity. The iSeries can host up to 32 xSeries servers, run an AIX run-time environment (OS/400 PASE), support LINUX (via LPAR), and many other industry-wide environments such as Domino, HTTP Server (powered by Apache), Java, XML, etc. And most of these environments can share and update the same database. Call for configuration assistance.

Storage Configuration Assistance is available by calling or using the Upgrade Assistant for OS/400

LPAR

If you will be using logical partitioning (LPAR), an additional CD-ROM is required. See OS/400 on page 47 or see ibm.com/servers/eserver/series

visit ibm.com/shop/ca/series call 800 426-2255

Ultrium tape technology for backup and archival solutions

IBM TotalStorage™ Ultrium Tape Family



The family of TotalStorage™ Ultrium tape storage provides cost-effective backup, save/restore, and archival storage solutions for environments with needs ranging from entry-level for small systems to ultrascalable solutions for larger environments

■ **Offers breakthroughs in capacity, performance, and reliability for midrange and network tape storage environments**

■ **Provides continuous, easy-to-understand drive information with an LCD status display**

■ **Adheres to widely supported Linear Tape-Open** (LTO**) design specifications.**

IBM TotalStorage™ 3580 Ultrium Tape Drive

This is the building block of a new family of scalable, flexible tape solutions. The 3580 has the capacity of up to 200GB with compression. It features Ultra/Wide SCSI High Voltage Differential (HVD) interfaces and can attach to IBM and non-IBM servers, workstations and personal computers that support these interfaces.

IBM TotalStorage™ 3581 Ultrium Tape Autoloader

The 3851 is ideal for small- to medium-sized environments. With its higher capacity and performance, the 3581 is an excellent alternative to DLT, ¼ inch, 4mm and 8mm tape drives. It has a maximum media capacity of 1.4TB compressed data with a sustained data transfer rate of up to 30MB/sec (compressed). The sequential or random access autoloader can fit into the same space as multiple standalone drives.

IBM TotalStorage™ 3583 Ultrium Scalable Tape Library

By fully leveraging advanced Linear Tape-Open (LTO) technology, the 3583 provides an ideal solution for the needs of larger environments. It can handle what you need today and grow to meet your needs of tomorrow. The IBM 3583 supports from one to six IBM Ultrium tape drives and 18, 36, 54, or 72 tape cartridges – for a maximum of up to 14.4TB of compressed data.

Multiple drives support simultaneous operations with sustained data transfer at speeds of up to 30MB/sec for each drive. It also provides a cartridge I/O station for inserting and removing multiple cartridges while processing continues.

IBM TotalStorage™ 3584 UltraScalable Tape Library

The IBM 3584 is flexible enough to meet your needs now and in the future. Start with an entry base frame and add an expansion frame as you need capacity. You can also choose a mix of drives and media slots to suit your application needs. Each frame can contain up to 12 drives, with a maximum of 72 drives per library.

Why IBM LTO?

LTO is an open tape architecture developed by a consortium of three world-class storage producers. Open means availability from multiple vendors. IBM Means a new technology from a time-proven and innovative tape technology leader.

IBM Ultrium drives share best-of-breed technology with advanced multi-track recording capabilities, magneto-resistive (MR) head and servo technologies and high recording densities. Error correction code (ECC) function helps provide data integrity.

For more information - ibm.com/storage/lto

Type	Mod	Description	Price \$
3580	H11	Ultrium Tape Drive - HVD attach	†
3581	H17	Ultrium Tape Autoloader - HVD attach	†
3583	L18	Ultrium Scalable Tape Library - (18 cartridges)	†
3583	L36	Ultrium Scalable Tape Library - (36 cartridges)	†
3583	L72	Ultrium Scalable Tape Library - (72 cartridges)	†
3584	L32	Ultrium UltraScalable Tape Library - Base frame	†
3584	D32	Ultrium UltraScalable Tape Library - Expansion frame	†

† Call for feature pricing and information.

iSeries and AS/400 Tape Connection Features

Feature	Description	Price \$
2729	PCI	2,100
2749	High Speed PCI – 270/8xx only	2,100
2765	PCI Fibre Channel Tape Controller	6,120

visit ibm.com/shop/ca/iseriess call 800 426-2255

Get it all on tape

IBM TotalStorage™ 7208 20GB External 8mm Tape Drive (Model 342)



- **20GB to 40GB (with 2:1 compression) data storage capacity**
- **Up to 6MB/sec data transfer rate.**

The IBM TotalStorage™ 7208 20GB External 8mm Tape Drive Model 342 reads your 7GB, 5GB and 2.3GB 8mm tape formats and provides:

- Enhanced reliability via a rugged design with fewer moving parts and improved tape path
- Dynamic built-in head cleaner
- Extensive monitoring of tape and cartridge load motions



12 Month
Limited
Warranty

Requirements: OS/400 V4R1 or later and features 2729 or 6534.

For more information - ibm.com/storage/hardsoft/tape/7208

Type	Mod	Description	Price \$
7208	342	20GB External 8mm Tape Drive	10,500

▷ 7 Day QuickShip

FCC Class B (defined on page 4)

Media can be ordered along with your 7208. Call 888-IBM-MEDIA to order Media Only.

Manage your data storage

IBM TotalStorage™ 3490 Tape Subsystem

- **Data transfer rates up to 6.80MB/sec with compression for fast backup performance**
- **Integrated 10-cartridge autoloader.**

Five models, ranging from desk-side units to rack-mounted auto loaders and library model, can provide big performance for a small price. The ability to read 18-track and read-write 36-track tape provide flexibility and compatibility.

Requirements: OS/400 V3R1 or later and feature 6501 or OS/400 V4R1 or later and features 2729 or 6534.

3490 Model F Tape Subsystem

Type	Mod	Description	Price \$
3490	F00	IBM Subsystem	29,800
3490	F01	Floor-Standing Autoloader	36,300
3490	F11	Rack-Mounted Autoloader	36,300
3490	F1A	Library Model	29,800
3490	FC0	Rack	7,250

Media can be ordered along with your 3490. Call 888-IBM-MEDIA to order Media Only.

Back up data at 120GB per hour

IBM TotalStorage™ 3590 Tape Subsystems

Our half-inch tape drive offers a native device data rate between 9MB and 14MB that is up to 120GB[†] per hour with compressed data on iSeries 500 models 8xx. The 3590 offers both 20GB and 40GB uncompressed, extended cartridge storage capacity (E Models can read B Model formatted cartridges).



The IBM TotalStorage™ 3590 can be used in the IBM TotalStorage™ 3494 Tape Library for up to 748TB of compressed data storage and multiple server attachments. Call 800-426-2255 for configuration, requirements, and pricing information.

For more information - ibm.com/storage/hardsoft/tape/3590

Magstar 3590 High Performance Tape Subsystem

Type	Mod	Description	Price \$
3590	B11	With 10 cartridge ATL	50,720
3590	B1A	With automation drive	46,040
3590	E11	With 10 cartridge ATL	73,145
3590	E1A	With automation drive	68,670

[†] Using AS/400 PCI adapter FC #2749; assumes large files and 3:1 compression. User results may vary.

Safeguard your critical data

IBM TotalStorage™ Multi-purpose Tape Subsystem

- **420GB to 6.8TB of compressed storage with near online performance**
- **Up to 15GB/sec maximum compressed data rate.**



12 Month
Limited
Warranty

The IBM TotalStorage™ 3570 MP Tape Subsystem and the IBM TotalStorage™ 3575 MP Tape Library Dataserver expand the capability of tape to optimize both write- and read-intensive operations combining high save-and-recall performance with reliability.

For more information - ibm.com/storage/hardsoft/tape

Type	Mod	Description	Price \$
3570	C00	Magstar MP Tape Subsystem Drive Unit	24,000
3570	C01	20 Cartridge Library with 1 Drive, Stand-Alone	32,100
3570	C11	20 Cartridge Library with 1 Drive, Rack-Mount	32,100
3575	L06	Magstar MP Library Dataserver	31,400
3575	L12	Magstar MP Library Dataserver	58,000

* Please call 800-426-2255 for additional models, pricing and configuration assistance.

visit ibm.com/shop/ca/series call 800 426-2255



Manage 748TB of critical data

IBM TotalStorage™ 3494 Enterprise Automated Tape Library

■ Perform up to 610 cartridge mounts/dismounts per hour with DAA option

■ Mix 3490E and Magstar 3590 tape drives in same library.

Now you can use the modular, automated IBM TotalStorage™ 3494 to store up to 748 terabytes of data while reducing processing time and operational costs. Customers with a requirement for high availability to their data can order the TotalStorage™ 3494 High Availability model that provides a second library manager and accessor.



For more information - ibm.com/storage/hardsoft/tape/3494

Type	Mod	Description	Price \$
3494	L10/L12	Tape Library Dataserver*	139,900
3494	D10/D12	Drive Unit	56,400
3494	S10	Storage Frame	48,300
3494	HA1	High-availability Model	139,900

* Dimensions: 29.3" w x 60" d x 70.9" h

Boost your optical storage

IBM TotalStorage™ 3995 Optical Library



■ 8x drives double the previous capacity with capability to read 4x, 2x and 1x optical cartridges

■ Granular capacities ranging from 104GB to 1,341GB of direct access storage

■ Support of WORM, rewritable, and CCW (Continuous Composite Write-Once) optical cartridges.

IBM's 3995 C-Series Optical Library for iSeries and AS/400 is the low-cost, high-capacity solution for storage-hungry applications or infrequently accessed data. Multiple users can access records at the same time within seconds. You gain efficiency as you reduce labor and supply costs. You also control user access to better manage information security.

For more information - ibm.com/storage/hardsoft/opticalstor

Type	Mod	Description	Optical Drives	Price \$*
3995	C40	104GB	1 or 2	17,600
3995	C44	540GB	2 or 4	62,500

* Call for additional models, pricing and configuration assistance.

High performance disk storage system

IBM TotalStorage™ Enterprise Storage Server



3 Year Limited Warranty



■ Superior storage sharing for iSeries, AS/400, pSeries, UNIX, Windows NT, Windows 2000, Numa-Q, Novell Netware, zSeries and S/390 servers

■ Two powerful 4-Way RISC SMP processors, large cache, and integrated serial disks provide high performance

■ Low cost-of-ownership and ease-of-use with the IBM TotalStorage™ Enterprise Storage Server Specialist

■ Redundant hardware and RAID 5 disk arrays provide high availability for mission-critical business applications.

The award-winning Enterprise Storage Server (ESS) is the storage of choice for users wanting comprehensive enterprise storage consolidation and disk sharing between multiple, heterogeneous server platforms.

The second-generation Seascape disk storage system, ESS is a centrally-managed disk storage solution that enables you to consolidate up to 22TB of useable RAID5 protected capacity (26.9TB raw capacity).

AS/400 Requirements: Models with OS/400 V3R1 or later and FC6501.

For more information - ibm.com/storage/ess

Type	Mod	Description	Price \$
2105	F10	Enterprise Storage Server with 8GB of cache	334,800
2105	F20	Enterprise Storage Server with 8GB of cache	334,800



eLiza Technology

TOWARD THE SELF-MANAGING e-business INFRASTRUCTURE

Today's IT environment is growing increasingly complex – with larger and larger systems, networks of networks, billions of users, a trillion devices, colossal transaction volumes, and challenging new kinds of workloads that are growing rapidly.

To cope with this complexity, IBM has launched eLiza Technology, a company-wide initiative whose objective is to make your e-business infrastructure – IBM servers, storage and software – a self-managing system. The project is integrating mainframe management techniques with new advances from the research community to help you enhance resource management and automation, configure your system on the fly, repair problems online and defend against unauthorized access. The result is an IBM server platform that is increasingly:

- ***SELF-CONFIGURING*** with Plug and Play, Capacity Upgrade on Demand, setup wizards and wireless systems management capabilities
- ***SELF-OPTIMIZING*** using dynamic resource allocation, logical partitioning and self-managing performance monitoring to streamline operations
- ***SELF-HEALING*** employing Chipkill memory, advanced clustering techniques, Call Home, ECC cache memory and multipath I/O to maximize system availability
- ***SELF-PROTECTING*** using SSL, digital certificates, encryption, RACF, single signon, LDA, Kerberos and other security technologies to ensure the integrity of corporate systems and data.

eLiza Technology is more than just a vision for the future. IBM customers in every industry are already seeing the results. Your company can, too.

iSeries Upgrades

***Your iSeries Upgrades section has not gone away
- it's gone online***

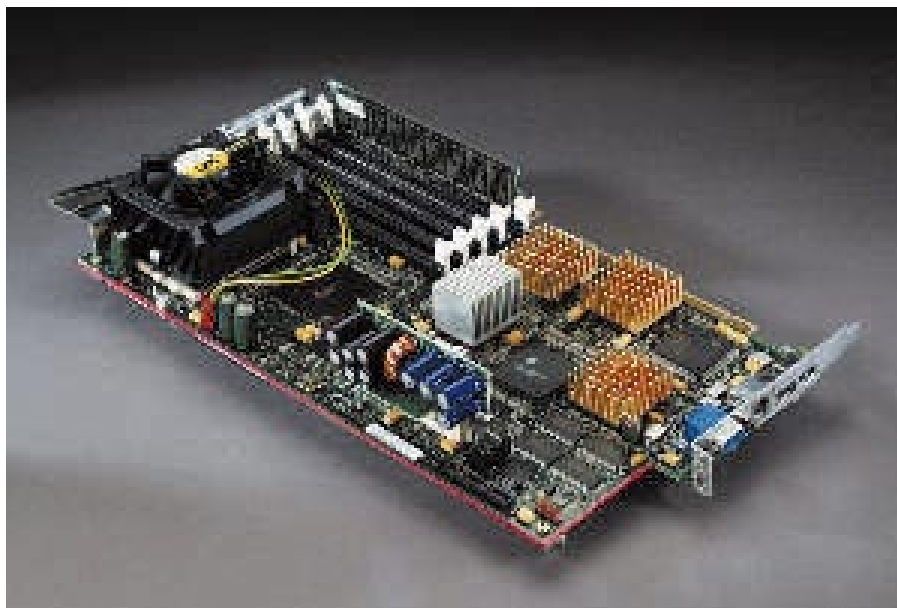


For a more up to date listing of iSeries Upgrades, go to the
IBM @server Interactive online catalog at:

ibm.com/eserver/catalog

We have the features you need to get the job done!

Models 8xx and 270 Features



DON'T SEE WHAT YOU NEED?
Additional features for all modules are available. Call today!

Expand your iSeries server

Your iSeries 400, AS/400e or AS/400 server can become even more powerful – and do even more for your department or enterprise – when you add optional features. From memory to additional disk space to enhanced communications and networking capabilities, the features on

this and the following pages show you how to make your iSeries or AS/400 work harder and perform at an even higher level for your organization.

For more information - ibm.com/eserver/iseseries/support/planning

Feature	Description	Price \$
Memory Features*		
▶ 2881	Main Storage Expansion (830 Only)	3,550
▶ 2884	Main Storage Expansion (270*/820 Only)	3,550
▶ 3002	128 MB Main Storage (820 Only)	2,060
▶ 3004	256 MB Main Storage (820 Only)	4,060
▶ 3006	512 MB Main Storage (820 Only)	8,240
3007	1GB Main Storage (S-Star Only)	16,500
3009	128MB Main Storage (S-Star Only)	2,060
▶ 3022	128 MB Main Storage (270* Only)	1,650
▶ 3024	256 MB Main Storage (270* Only)	2,480
▶ 3026	512 MB Main Storage (270* Only)	3,300
3027	1GB Main Storage (270* Only)	6,600
3029	128MB Main Storage (270* Only)	1,650
3032	256MB Main Storage (270* Only)	2,480
3033	512MB Main Storage (270* Only)	3,300
3034	1GB Main Storage (270* Only)	6,600
▶ 3062	128 MB Main Storage (830 Only)	2,060
▶ 3064	256 MB Main Storage (830 Only)	4,120
▶ 3066	512 MB Main Storage (830 Only)	8,240
3067	1GB Main Storage (830 Only)	16,500
3196	8192 MB Main Storage (840 Only)	237,400
3612	1024 MB Main Storage (840 Only)	29,700
3613	2048 MB Main Storage (840 Only)	59,400
3614	4096 MB Main Storage (840 Only)	118,700

*The Model 270 memory feature(s) required depend on the model 270 processor feature in use. Call for configuration assistance.

Feature	Description	Price \$
Disk Units (Available for Models 270/820/830/840/SB2/SB3)		
▶ 4317	8.58 GB Disk Unit (10K rpm)	2,260
▶ 4318	17.54 GB Disk Unit	3,240
▶ 4319	35.16 GB (10K rpm) Disk Unit	5,240
Expansion Features		
0578	PCI Expansion Unit for Rack Mounting	19,400
5057	Storage Expansion Unit (MIGRATION TOWER II)	8,050
5074	Storage/PCI Expansion Tower (820/830/840 Only)	28,900
5075	Storage/PCI Expansion Tower (270/820 Only)	9,500
5077	Migration Tower II (830/840/SB2/SB3 ONLY)	24,000
5078	PCI I/O Expansion Unit	19,400
5079	1.8mm I/O Tower (820/830/840 Only)	91,100
▶ 5101	30 Disk Expansion Features (830/840/#5074)	14,500
5111	30 Disk Expansion with dual line cord	14,300
7104	System Unit Expansion (270 Only)	2,420
▶ 7123	DASD Expansion Unit (270 Only)	1,370
▶ 7127	DASD Expansion Unit (820 Only)	1,370
▶ 7133	DASD Concurrent Maint. Cage (270 Only)	1,370
▶ 24 Hour QuickShip		

We have the features you need to get the job done!

Models 8xx and 270 Features - continued



Feature	Description	Price \$
Input Output Adapters (IOAs)		
▶ 2749	PCI Ultra Mag Media Controller (270/820/830/840/SB2/SB3 ONLY)	2,100
▶ 2763	PCI Raid Disk Controller (270/820 Only)	4,830
▶ 2765	PCI Fibre Channel Tape Adapter	6,120
▶ 2766	PCI Fibre Channel Disk Adapter	9,660
▶ 2768	PCI Mag Media Controller (270/820/830/840/SB2/SB3 ONLY)	1,450
▶ 2791	Integrated xSeries Server (850MHz) for Models 820/830/840/SB2/SB3 ONLY	4,510
▶ 2795	128 MB INS Memory	650
▶ 2796	256 MB INS Memory	1,300
▶ 2797	1 GB INS Memory	5,320
▶ 2799	Integrated xSeries Server (1GHz) for Models 820/830/840/SB2/SB3 Only	4,580
▶ 2842	PCI IOP (270 Only)	2,900
▶ 2843	PCI IOP (820/830/840/SB2/SB3 ONLY)	3,100
▶ 2891	Integrated xSeries Server (850MHz) for Model 270 ONLY	4,510
▶ 2895	128 MB INS Memory	650
▶ 2896	256 MB INS Memory	1,300
▶ 2897	1 GB INS Memory	5,320
▶ 2899	Integrated xSeries Server (1GHz) for Model 270 Only	4,890
▶ 4748	PCI Raid Disk Controller (270/820/830/840 Only)	9,660
▶ 4778	PCI RAID Disk Unit Controller (V5R1)	9,660
Communications Adapters (Available for Models 270/820/830/840/SB2/SB3)		
▶ 2743	PCI 1 GB Ethernet IOA	2,930
▶ 2744	100 MBps Token-Ring IOA	1,360
▶ 2760	PCI 1GB Ethernet UTP IOA (Copper)	2,930
▶ 2772	PCI Dual WAN/modem IOA	1,510
▶ 2805	PCI Quad Modem IOA	2,620
▶ 2817	PCI 155 Mbps MMF ATM	6,120
▶ 4716	PCI Integrated Analog Modem	Call
▶ 4745	PCI WAN IOA	685
▶ 4838	100/10 MBps Ethernet IOA	1,450

Feature	Description	Price \$
Workstation Controllers		
▶ 4746	PCI Twinaxial Workstation IOA	1,210
Other		
▶ 1460	3m HSL Cable(270/820/830/840/SB2/SB3 ONLY)	725
▶ 1461	6m HSL Cable (270/820/830/840/SB2/SB3 ONLY)	890
▶ 1462	15m HSL Cable (820/830/840/SB2/SB3 ONLY)	1,780
▶ 1468	250m Optical SPCN Cable	3,170
▶ 1470	6m Optical HSL Cable (830/840 Only)	875
▶ 1471	30m Optical HSL Cable (830/840 Only)	1,910
▶ 1472	100m Optical HSL Cable (830/840 Only)	3,170
▶ 1473	250m Optical HSL Cable (830/840 only)	4,760
▶ 4430	DVD RAM R/W (8xx)	2,580
▶ 4487	50GB QIC Tape (6xx, Sxx, 7xx, 8xx)	9,660
▶ 4525	CD-ROM (270/820 Only)	670
▶ 4530	DVD RAM R/W (270, 820)	2,580
▶ 4582	4 GB QIC Tape (270/820 Only)	2,100
▶ 4583	16 GB QIC Tape (270/820 Only)	6,280
▶ 4586	26 GB QIC Tape (270/820 Only)	8,050
▶ 4587	50GB QIC Tape (270, 820)	9,660
▶ 4801	PCI Crypto CoProcessor (820/830/840/SB2/SB3 ONLY)	8,050
▶ 4802	PCI Crypto CoProcessor (UPGRADE)(820/830/840 Only)	8,050
▶ 5155	Power/Cooling for 820 (820 Only)	3,140
▶ 5156	Power/Cooling for #5075 (270/820 Only)	3,140
▶ 5157	Feature Power Supply (820 Only)	3,140
▶ 7002	HSL Enabler (270 Only)	325

▶ 24 Hour QuickShip
 † formerly Integrated Netfinity Server
 * Call for configuration and pricing - requires RPK 847126

visit ibm.com/shop/ca/iserie call 800 426-2255

Can I use the features I own on the new iSeries?

PCI Expansion Tower Conversions



Upgrading To Native HSL towers on the iSeries

- Provides increased functionality for 8xx models
- Can eliminate the need for a migration tower – reducing maintenance costs
- Positions you for easier upgrades to future iSeries models (beyond the 8xx). These models will not be available until the second half of 2002
- 6xx/Sxx/7xx customers can position themselves for future HSL capabilities by installing a #5065/5066 tower today and converting it to a #5074/5079 tower in the future.

The table below identifies features that must be replaced when converting a #5065/5066 to a #5074/5079 tower.

Features used in #5065/5066 Replacement Feature for #5074/5079				
Number	Names	Number	Names	Price \$
#2718	PCI Magnetic Media Controller	#2768	PCI Magnetic Media Controller	1,450
#2721	PCI Two-Line WAN IOA	#4745	PCI WAN IOA	685
#2722	PCI Twinaxial WorkStation IOA	#4746	PCI Twinaxial WorkStation IOA	1,210
#2724	PCI 16/4 Mbps Token-Ring IOA	#2744	PCI 100 Mbps Token-Ring IOA	1,360
#2729	PCI Magnetic Media Controller	#2749	PCI Magnetic Media Controller	2,100
#2824*	PCI LAN/WAN Workstation IOP	#2843	PCI IOP	3,100*

* The first IOP in a #5065/66 tower is part of the tower and is replaced as part of the conversion. Additional #2824 IOPs may or may not need to be replaced. While the #2824 could only support a single high-speed IOA, the #2843 IOP can support multiple high-speed adapters.

The HSL/PCI towers used on the 8xx provide far more speed and flexibility than older SPD towers. Faster I/O adapters can be used; integrated and HSL-attached xSeries Servers are supported; Fibre Channel connectivity and Switchable Towers provide additional benefits.

For additional information on HSL/PCI, see the Future Products/Hardware link from the iSeries Planning website: <http://ibm.com/servers/eserver/series/support/planning/nav.html>

To attach older towers to 8xx models, a migration tower is required. To get the maximum value from your 8xx, consider replacing older towers with HSL/PCI #5074/5079 towers and eliminate the ongoing need for a migration tower.

When upgrading to HSL/PCI, existing SPD IOP/IOAs must be replaced with PCI equivalents. Existing 10K rpm disks in SPD towers can be converted for use in PCI towers (\$250 per drive). Older disks must be replaced.

Currently installed #5065/5066 SPD/PCI towers can be converted to direct HSL attachment for use with an 8xx (and the next generation of iSeries). Additionally, the small #5075 HSL tower can be converted to a larger #5074 tower. The following tower conversions are available:

The following no-charge feature conversions are used for features moving from #5065/#5066 towers to #5074/#5079 towers. The converted features are physically and functionally identical. The feature numbers and some names were changed to designate installation information.

From	To	Price\$
#5065	#5074	10,300
#5066	#5079	20,600
#5075	#5074	21,400

Feature Description	Feature # in 5066/5066	Feature # in 5074/5079
10 Mbps Ethernet Adapter (withdrawn effective 12/28/01)	#2723	#4723
"Base" 10 Mbps Ethernet Adapter	#9723	#4723
2-Line WAN IOA	#2745	#4745
PCI Twinaxial Workstation IOA	#2746	#4746
RAID-5 Disk Controller	#2748	#4748
ISDN BRI U IOA	#2750	# 4750
ISDN BRU S/T IOA	#2751	#4751
PCI Integrated Analog Modem	#2761	#4761
RAID-5 Disk Controller (req's. V5R1)	#2778	#4778
ATM IOA 155 Mbps Unshielded Twisted Pair	#2815	#4815
ATM IOA 155 Mbps Multimode Fibre (withdrawn effective 12/28/01)	#2816	#4816
ATM IOA 155 Mbps Single Mode Fibre OC3	#2818	#4818
PCI 100/10 Ethernet	#2838	#4838
PCI Cryptographic Coprocessor	#4802	#4801

Call Us
for configuration
assistance.

For extreme performance soup up your server

7xx/6xx/Sxx Features



7xx/6xx/Sxx Models

Feature	Description	Price \$
Memory Features - Model 170/720/620/S20 (Pairs Required)		
2830	Main Storage Expansion #2182, #2165, #2188, #2177, #2178 only	1,780
3001	32 MB Main Storage	515
3002	128 MB Main Storage	2,060
3003	256 MB Main Storage (V4R3 170 only)	4,120
3004	256 MB Main Storage (720 only)	4,060
Memory Features - Model 640/S30/650/S40/730/740		
3189	128 MB Main Storage	3,710
3179	256 MB Main Storage	7,420
3180	512 MB Main Storage	14,900
3192	1024 MB Main Storage	29,700
3193	2048 MB Main Storage	59,400
(Memory installed in Pairs or Quads based on Processor Selection)		
ULTRA Disk Features		
6817	8.58 GB Disk Unit (10K rpm)	2,260
6818	17.54 GB Disk Unit (10K rpm)	3,240
6717	8.58 GB Disk Unit (10K rpm)	2,260
6718	17.54 GB Disk Unit (10K rpm)	3,240
Disks for PCI Tower (#5065, #5066)		
4317	8.58 GB Disk Unit (10K rpm)	2,260
4318	17.54 GB Disk Unit (10K rpm)	3,240
Expansion Features		
2688	Optical Link Processor-1063Mbps	3,220
2695	Optical Bus Adapter	1,610
7128	DASD Expansion Unit (Internal) (600/S10/620/S20 ONLY)	1,370
5057	Storage Expansion Unit (USE ON 650/S40 SYSTEM UNIT ONLY)	8,050
5065	Storage/PCI Expansion Tower	28,900
5066	1.8m I/O Tower*	91,100
5101	30 Disk Expansion for PCI Tower (#5065)	14,500
7102	170 PCI Expansion Unit	4,830

*Consider 8xx Upgrade and 5074 or 5079 instead

7xx/6xx/Sxx Models (continued)

Feature	Description	Price \$
PCI - High Speed IOPs		
2718	PCI Magnetic Media Controller (Req. for 7207-122 QIC External Tape)	1,450
2748	PCI RAID Disk Unit Controller (V4R4)	9,660
2778	PCI RAID Disk Unit Controller V5R1	9,660
2729	PCI External Tape Controller	2,100
6831	1.6GB Read Cache (170, 620, S10, S20, 720)	59,600
2824	PCI LAN/WAN/Workstation IOP	2,900
2838	X100/10 Ethernet	1,450
2865	PCI 333 MHz Integrated Netfinity Server	2,380
2866	PCI 333 MHz Integrated Netfinity Server (Model 170)	2,380
Standard Adapters - PCI		
Communications		
2745	2-LINE WAN/IOA	680
Cables		
0325	Extension Cables for NT	180
0348	V.24/EIA232 20 ft.	205
0349	V.24/EIA232 50 ft.	285
0353	V.35 20 ft. PCI	205
0354	V.35 50 ft. PCI	285
0356	V.36 20 ft. PCI	205
0359	X.21 (Hot 'V') 20 ft. PCI	205
0360	X.21 (Hot 'V') 50 ft. PCI	285
2761	PCI Integrated Analog Modem	5,480
Workstation Controllers - PCI		
2746	PCI Twinaxial IOA (V4R4)	1,210
Other		
4425	CD-ROM (PCI Tower Only)	670
4482	4.0 GB 1/4" Cartridge Tape (PCI Tower)	2,100
4483	16.0 GB 1/4" Cartridge Tape (PCI Tower)	6,280
4486	25.0 GB 1/4" Cartridge Tape (PCI Tower)	8,050
6325	CD-ROM	660
6382	4.0 GB 1/4" Cartridge Tape	2,060
6483	16.0 GB 1/4" Cartridge Tape (720, 620, 600, S10, S20 Systems or Expansions)	6,280
6386	25.0 GB 1/4" Cartridge Tape	8,050
6480	2.5 GB 1/4" Cartridge Tape	1,590
6482	4.0 GB 1/4" Cartridge Tape	2,060
Version 4 SPD (Book) Features		
Cables		
0330	V.24/EIA232 20 ft.	205
0331	V.24/EIA232 50 ft.	285
0335	V.36/EIA449 20 ft.	205
0338	V.35 20 ft.	205
0339	V.35 50 ft.	285
0341	X.21 20 ft.	205
0342	X.21 50 ft.	285

Make sure your system is up to the speed of your business

AS/400e Model 250 and Model 170 Features



Models 250 & 170 Features

Feature	Description	Price \$
Memory Features		
▶ 3022	128MB Main Storage	1,650
▶ 3024	256 MB Main Storage	2,480
Disk Features		
▶ 6817	8.58 GB Disk Unit - 10K rpm	2,260
▶ 6818	17.54 GB Disk Unit - 10K rpm	3,240
Expansion		
7102	PCI System Expansion Unit	4,830
PCI High Speed IOP's		
▶ 2718	PCI Magnetic Media Contr.	1,450
2729	PCI External Tape Contr.	2,100
2763	PCI Raid Disk Contr	4,830
▶ 2748	PCI Raid Disk Contr	9,660
▶ 2824	LAN/WAN/Workstation IOP	2,900
▶ 2866	PCI Integrated Netfinity Server	2,380
2867	256 MB INS Memory	1,990
▶ 0325	Extension Cables for NT	180
Communications		
▶ 2720	PCI WAN/Twinaxial IOA	1,210
▶ 2745	Two Line WAN IOA	680
2761	PCI Integrated Analog Modem	5,480

Models 250 & 170 Features Cont'd

Feature	Description	Price \$
Cables		
▶ 0348	V.24/ EIA232 20-Ft PCI Cable	205
▶ 0349	V.24/ EIA232 50- Ft PCI Cable	285
▶ 0353	V.35 20-Ft PCI Cable	205
▶ 0354	V.35 50-Ft PCI Cable	285
▶ 0356	V.36 20-Ft PCI Cable	205
▶ 0359	X.21 20-Ft PCI Cable	205
▶ 0360	X.21 50-Ft PCI Cable	285
▶ 0365	V.24/ EIA232 80- Ft PCI Cable	325
▶ 0367	Ops Console PCI Cable	200
▶ 0381	Remote Control Panel Cable	200
Other		
0398	Operations Console Package	365
▶ 2746	PCI TwinAxial Worstn IOA	1,210
4801	PCI Cyprto Coprocessor	8,050
6382	4 GB QIC Tape	2,060
6383	16 GB QIC Tape	6,280
6386	25 GB QIC Tape	8,050

▶ 24 Hour Quickship
 † Effective September 1, 2000, IBM has introduced the following new main storage features used on the AS/400 270 and 8XX models. These features introduce the latest 256MB memory technology. The prices of these new features are the same as those of the features they replace. These Models require main storage to be placed in pairs, quads, or octals based on the particular processor involved. The new main storage features can be mixed with all current features except within a pair, quad, or octal.
 †† Please call for price information

For more information - ibm.com/servers/eserver/series

Introducing iSeries Printers

IBM Printers



Designed, built, tested, and supported as a standard part of the iSeries system

■ **From composition to printing to "e-output", IBM provides the total solution**

■ **AFP/IPDS is the native, integrated output architecture on iSeries. True, integrated IPDS is a part of nearly every printer in the IBM iSeries line**

■ **Support for a breadth of data streams and dynamic network connections enable you to get maximum printing productivity**

■ **IBM iSeries printers are ready for e-business. Embedded Web servers, remote management via the Web, and support for Internet Printer Protocol are just some of the e-business characteristics you'll find**

■ **From impact matrix at 375 characters per second to production continuous forms at over 1000 pages per minute, the IBM iSeries printers represent the broadest, most highly scalable line of printers available.**

IBM Infoprint 1116 Joins IBM Infoprint 1000 Network Printer Family

The IBM Infoprint 1116 is the latest addition to the IBM Infoprint Family 1000 printer line-up. Six advanced workgroup printers ranging in speeds from 16 to 45 pages per minute are designed with the latest printing technologies to meet the needs of your business.

IBM Industrial Printers

Many companies are upgrading and automating their supply chain processes to streamline operations and speed delivery to customers. Printers are an important link in the supply chain that shouldn't be overlooked. Our line and serial matrix printers are reliable, easy-to-use, and integrated for assured delivery. And, check out the new IBM thermal printers (4400 Series), combining the advantages of thermal printing with iSeries integration.

IBM Production Printers

As the iSeries has grown into an enterprise server, production printing has become a natural requirement. IBM is the standard production printing, both in hardware and architecture (IPDS). IBM production printers handle the mission-critical, high-volume documents and reports that drive your business. Take a look at the new iSeries production cutsheet printer, the IBM Infoprint 2000.

IBM Worldwide Service and Support

To keep your print operations running smoothly, rely on our worldwide staff of experts, on-call 24 hours a day, 7 days a week, 365 days a year. Our customer engineers are trained and experienced on the entire line of IBM iSeries printers, and can call upon some of the most sophisticated software tools to help keep you up and running. IBM is the expert in iSeries printing and this expertise becomes all the more critical as e-business transformations introduce "e-output" into the mix.

For more information

Visit the Printing Systems Web site at ibm.com/printers or call (800) 358-6661 and select option 3.

For more information - ibm.com/printers

IBM Infoprint 1116 joins the Infoprint 1000 line

IBM Infoprint 1000 Network Printer Family

Today's e-business environments require fast, reliable, high-quality printers that can be driven by both iSeries and network applications. The IBM Infoprint 1000 Family of network printers is just that, with six exceptional printers ranging in speeds from 16 pages per minute up to 45 pages per minute. With optional IPDS on most models, these printers retain their network skills but become very capable iSeries printers, with the management, functionality, and error recovery of direct-attached printers.

Infoprint 1116

The Infoprint 1116, the newest addition to the Infoprint 1000 family, is the entry affordable choice. The Infoprint 1116 delivers great value with its high-resolution print quality and versatile networking capabilities.

Infoprint 1120 and 1125

These exceptional values deliver 20 and 25 pages-per-minute (ppm) at 1200 dots-per-inch (dpi) print quality. All of the Infoprint 1000 series printers from 20 ppm up offer optional IPDS.

Infoprint 1130 and 1140

These midrange network laser printers provide 1200 x 1200 dpi print quality at print speeds of 30 and 40 ppm. Advanced finisher provides stapling and offset stacking.

Infoprint 1145

Top of the line in the workgroup space, the Infoprint 1145 is a wide format, high volume 45 ppm printer that delivers a wide array of features – finishers, input/output options, hole punching – to maximize its overall effectiveness when deployed in an iSeries enterprise environment. The Infoprint 1145 has 1200 dpi print quality and the performance to tackle high-volume, business-critical printing.

For more information - ibm.com/printers/iseries

Midrange workhorse

Infoprint 70



■ **Integrated IPDS enables Infoprint 70 to take full advantage of the functionality, management, and error recovery of AFP**

■ **Integrated support of PostScript, PDF, and PCL**

■ **Large paper capacity includes up to 6,150 sheets of input and standard 2000-sheet stacker that can also staple up to 50 sheets.**

Today's e-business environments require a fast, reliable, high-quality output solution that can be driven by both iSeries and network applications. The IBM Infoprint 70 delivers a powerful punch – 70 impressions per minute and up to 400,000 impressions per month – all built into a small footprint.

For more information - ibm.com/printers/iseries

High-performance, high-quality thermal printing

IBM 4400 Thermal Label Printer



■ **Support for IPDS (Intelligent Printer Data Stream) means developing barcoded thermal applications is a snap**

■ **IPDS also means reliable, industrial-strength printing**

management, even when the printer is deployed in a TCP/IP network

■ **Support for the IBM 4400 by wide range of thermal printing middleware solutions and thermal data streams.**

The IBM 4400 Thermal Label printers provide high-performance, high-quality thermal printing geared to the iSeries industrial environments that they must operate in. This is an environment where application integration, reliable output management, and network administration are essential.

For more information - ibm.com/printers/iseries

We have the right printer for your needs

Printers At-A-Glance

Type	Mod	Feature	Description	Speed	Forms	Price \$
4400	004		IBM 4.1" Thermal Printer	Up to 10" IPS		4,150
	006		IBM 6.6" Thermal Printer	Up to 10" IPS		6,605
	008		IBM 8.5" Thermal Printer	Up to 8" IPS		9,830
		4862	IPDS			1,230
4230	101		IBM 4230 Dot Matrix Printer Twinax, SCS or IPDS	Up to 375 CPS		4,830
4230	111		IBM 4230 Dot Matrix Printer Twinax, IPDS	Up to 375 CPS		5,790
4230	1S2		IBM 4230 Dot Matrix Printer Twinax, SCS or IPDS	Up to 480 CPS		5,150
4230	102		IBM 4230 Dot Matrix Printer Twinax, IPDS	Up to 480 CPS		6,110
4230	4S3		IBM 4230 Dot Matrix Printer Ser/Par/Tx, ASCII, non-IPDS or IPDS	Up to 600 CPS		5,470
4230	4I3		IBM 4230 Dot Matrix Printer Ser/Par/Tx, ASCII, non-IPDS	Up to 600 CPS		6,430
4232	302		IBM 4232 Dot Matrix Printer ASCII	Up to 600 CPS		4,180
4247	003		IBM 4247 Multi-form Printer ASCII	Up to 700 CPS	Cutsheet/Continuous	4,660
		4210	Twinax SCS			1,130
		4220	Twinax IPDS			2,100
6400	050		IBM 6400 Line Matrix Printer, Cabinet or Pedestal	Up to 500 LPM	Continuous Forms	9,980
6400	P50		IBM 6400 Line Matrix Printer	Up to 500 LPM	Continuous Forms, Pedestal	8,370
6400	P10		IBM 6400 Line Matrix Printer	Up to 500 LPM	Continuous Forms, Pedestal	12,000
6400	010		IBM 6400 Line Matrix Printer, Cabinet or Pedestal	Up to 1000 LPM	Continuous Forms	12,900
6400	015		IBM 6400 Line Matrix Printer, Cabinet	Up to 1500 LPM	Continuous Forms	18,700
		5861	Ethernet NIC with/IPDS			2,300
2770	001		Infoprint 70	Up to 70 IPM	High volume Cutsheet	76,900
		4162	Ethernet 10/100 Tx			615
2710	AF1		Infoprint 2000	Up to 110 IPM	High volume Cutsheet	426,500
		4165	Ethernet TCP/IP			1,160
4370	003		Infoprint 62	62 PPM - 300 dpi	Continuous Form	92,239
3300	ES1		Infoprint 3000	Up to 172 IPM	Simplex, Continuous Form	338,000
3300	ED1/ ED2		Infoprint 3000	Up to 344 IPM	Duplex, Continuous Form	*
4000	IS1		Infoprint 4000	Up to 354 IPM	Simplex, continuous Form	549,300
4000	IS2		Infoprint 4000	Up to 501 IPM	Simplex, continuous Form	644,300
4000	ID1/ID2		Infoprint 4000	Up to 708 IPM	Duplex, Continuous Form	*
4000	ID3/ID4		Infoprint 4000	Up to 1102 IPM	Duplex, Continuous Form	*
4000	ID5/ID6		Infoprint 4000	Up to 1002 IPM	Duplex, Continuous Form	*
4000	IR1/IR2		Infoprint 4000	Up to 464 IPM	High Res., Duplex, Cont. Form	*
4000	IR3/IR4		Infoprint 4000	Up to 708 IPM	High Res., Duplex, Cont. Form	*
4516	001		Infoprint 1116 (Base)	Up to 16 PPM	Cutsheet	670
	N01		Infoprint 1116 (Network)	Up to 16 PPM	Cutsheet	990
4520	001		Infoprint 1120 (Base)	Up to 20 PPM		1,150
	D01		Infoprint 1120 (Duplex)	Up to 20 PPM	Cutsheet, duplex	1,360
	N01		Infoprint 1120 (Network)	Up to 20 PPM	Cutsheet, ethernet	1,720
	DN1		Infoprint 1120 (Network/Duplex)	Up to 20 PPM	Cutsheet, ethernet, duplex	1,940
4525	001		Infoprint 1125 (Base)	Up to 25 PPM	Cutsheet	1,480
	N01		Infoprint 1125 (Network)	Up to 25 PPM	Cutsheet, ethernet	2,130
	DN1		Infoprint 1125 (Network/Duplex)	Up to 25 PPM	Cutsheet, ethernet, duplex	2,540
4530	001		Infoprint 1130 (Base)	Up to 30 PPM	Cutsheet	1,900
	N01		Infoprint 1130 (Network)	Up to 30 PPM	Cutsheet, ethernet	2,690
	DN1		Infoprint 1130 (Network/Duplex)	Up to 30 PPM	Cutsheet, ethernet, duplex	3,120
	IN1		Infoprint 1130 (Internet/Network)	Up to 30 PPM	Cutsheet, ethernet, Image Quick	2,790
4540	001		Infoprint 1140 (Base)	Up to 40 PPM	Cutsheet	2,790
	N01		Infoprint 1140 (Network)	Up to 40 PPM	Cutsheet, ethernet	3,520
	DN1		Infoprint 1140 (Network/Duplex)	Up to 40 PPM	Cutsheet, ethernet, duplex	4,020
	IN1		Infoprint 1140 (Internet/Network)	Up to 40 PPM	Cutsheet, ethernet, Image Quick	3,600
4545	001		Infoprint 1145 (Base)	Up to 45 PPM	Cutsheet	4,750
	N01		Infoprint 1145 (Network)	Up to 45 PPM	Cutsheet, ethernet	5,570
	DN1		Infoprint 1145 (Network/Duplex)	Up to 45 PPM	Cutsheet, ethernet, duplex	6,540

* Please call for model and pricing information

Protect against power problems

Uninterruptible Power System (UPS)

Protect against sags, surges and spikes

Where were you when the lights went out? Power disturbances can cause memory loss, data errors, damaged circuit boards and system crashes. The 9910 OEM UPS provides the backup power you need to ride through a typical power outage. So it's business as usual until power is restored.

9910 Uninterruptible Power System (UPS)

Tested and approved by IBM AS/400 Server Group Power Systems Development to work with your iSeries and AS/400, the 9910 UPS protects you from power disturbances such as brownouts, sags, surges and spikes as well as complete power outages.

The 9910 UPSs include a premium warranty package that enhances the return on investment (ROI) over other UPSs available on the market today. The IBM warranty extends coverage of the UPS (five years for Best Power and Powerware UPSs), provides remote problem determination, provides a replacement shipped to arrive the next business day (when necessary), and offers a single point of contact through the IBM Call Center.



For more information -
www.oem.powerware.com/ibm-ups/9910solutions.html

Best Power 9910 UPS – Five Year Element Exchange Warranty

Type	Mod	Description	Price \$
9910	B34	1000VA EXT	2,205
9910	6619	Extended Battery Pack for B34	1,194
9910	B36	1500VA EXT	2,923
9910	6620	Extended Battery Pack for B36	1,333
9910	B42	3000VA EXT	7,435
9910	B46	6000VA EXT	11,786
9910	6616	Axxium Pro 3kva Power Module for B42/B46	3,140
9910	6618	Axxium Pro Ext. Battery Module for B42/B46/6624	1,301
9910	6624	Axxium Pro Battery Enclosure (6 slot) for B42/B46	1,257

Powerware 9910 UPS – Five Year Element Exchange Warranty

Type	Mod	Description	Price \$
9910	P10	1000VA EXT	1,664
9910	6604	Extended Battery Pack for P10	973
9910	P15	1500VA EXT	2,302
9910	6605	Extended Battery Pack for P15	973
9910	EP5	3KVA EXT	5,103
9910	EP8	6KVA EXT	7,918
9910	6603	Extended Battery Pack for EP5/EP8	1,466

**An online catalog of IBM
@server offerings.
One Web site with just the
information you need!**

*The latest products. The latest prices.
Making informed decisions has never
been easier than with the newly
enhanced IBM @server online
catalog.*

*Designed to give you access to the
information you need to make
intelligent purchasing decisions 24 hours
a day, 7 days a week.*

*Featuring links to in-depth product
content, IBM announcements,
promotional offerings and online
buying.*

*Quick and easy to navigate, the online
catalog makes finding the right products
for your business simple - and fast.*

*This is your online source for the latest
information on IBM servers, add-ons,
storage and software.*

*Bookmark this site and visit it often:
ibm.com/eserver/catalog*

Attach to your iSeries or AS/400

E Series Monitors



**3 Year
Limited
Warranty**



IBM General Purpose monitors are the ideal choice to satisfy your standard iSeries and AS/400 business applications as well as demanding spreadsheet and graphics-intensive jobs.

	E54	E74
CTR Size/Type	15"	17"
Viewable Image Size	13.8"	15.9"
Dot Pitch/mm	0.28mm	0.27mm
Horiz. Scan Rate	30-69kHz	30-69kHz
Limited Warranty	3 years	3 years

Type	Mod	Description	Price \$
6331	M2N/N2N	E54 (White/Black)	269
6332	0HN/4HN	E74 (White/Black)	429

**You're busy . . .
What's new?**

*It's tough to stay on top of what's new in
the IT world. That's why IBM is starting
the @server News!*

*We'll help you stay abreast of what's
happening through mail, e-mail and the
Web. And that'll help you make
educated decisions about your
computing environment.*

*Watch for this exciting news from IBM.
We're working to make it easier for you
to keep informed.*

WHAT'S THE LATEST SCOOP ON INTEGRATION?



*Complimentary Webcast reveals what
the infrastructure experts are saying.*

Pssst. Do you want to find out the secrets behind integrating your various applications and your multiple systems? *Pssst.* Want to unravel the mysteries behind linking your internal hardware and software with that vast network of suppliers, customers and business partners out there?

Then what you should do next is hardly a puzzle. Sign up for a series of Webcasts on e-business infrastructure. The Webcasts are complimentary when you register by phone or online. Each is thirty minutes long and sponsored by IBM and ITworld.com.

In the first one, you'll hear expert discussion on the major integration challenges you face, including perhaps the biggest of all challenges – maximizing your ROI. And these Webcasts aren't just theory, either. Because each will conclude with thorough recommendations that will help you both develop a successful corporate strategy and point you to a full range of resources for additional information.

So register now for our complimentary online Integration Webcast. And get yourself the latest – absolutely the very latest – on integration.

CLICK OR CALL FOR A COMPLIMENTARY WEBCAST.



ibm.com/e-business/soready/c6



1 800 IBM 7080, ask for INFRA500

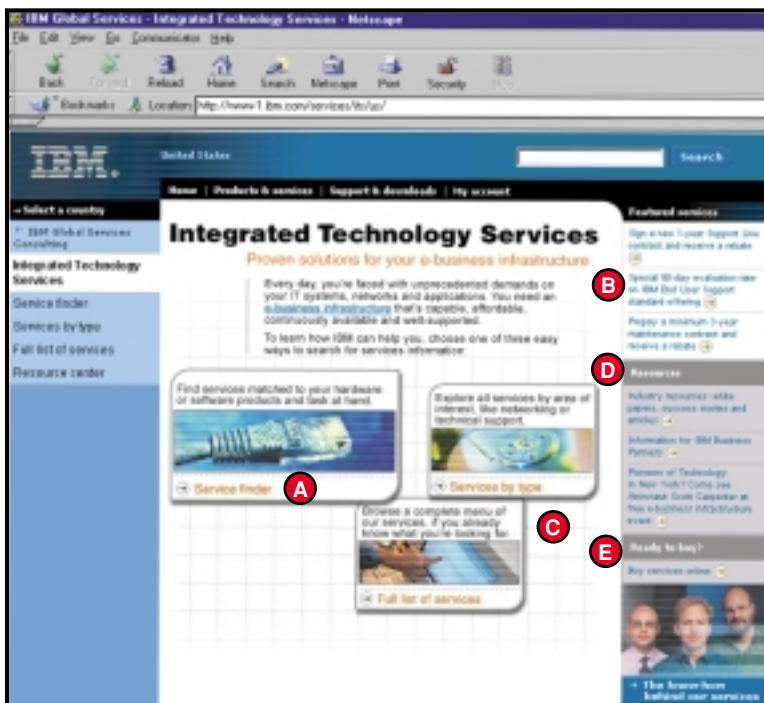


@business infrastructure

IBM Global Services

Now it's easier for you to find and shop for services!
Check out our new and improved Services Web site at:
ibm.com/services/its/us/dtw09.html*

Every page on the site has been enhanced – here are just a few examples...



**DON'T WAIT...
VISIT US NOW AND
SEE FOR YOURSELF!**

ibm.com/services/its/us/dtw09.html*

Be sure to bookmark this site today!

*For information on Integrated Technology Services in Canada,

go to **ibm.com/ca/services/its**

Easier Navigation:

- A** A new **Service Finder** gives you access to services information matched to your hardware or software products or task at hand.
- B** Now fast-path links to End User Support and our Support Line from **Special Offers**.

Expanded Content:

- C** For your convenience, a new **Full list of services** provides a menu of available services, including e-business infrastructure services, with links to expanded information.
- D** A **Resource center** – allows you to view white papers, success stories, and articles related to you industry.

Enhanced Design and Functionality:

- E** Select **Ready to buy** for easy access to services highlights and pricing. Approximately **90 new “Call me”** buttons are available to contact sales specialists regarding the service of interest.

The **Need assistance** feature, found throughout the site, provides toll free access to information resource specialists, at your convenience.

Customized support services

IBM Global Services



■ **IBM Global Services offers diverse, customized solutions to help you meet and beat the challenges of operating a successful business. We help you achieve substantial, measurable benefits to make you more competitive.**

For more information on IBM Global Services visit ibm.com/ca/services/

Identify potential systems issues before they impact you

E2E High Availability

- **Availability baseline assessment**
- **Detailed outage analysis**
- **Detailed architecture design review.**

A cross-discipline team of consultants and architects from IBM Global Services will perform a customized, issues-based analysis of your current architecture to identify immediate issues, outage costs and trend analysis.

Outages are analyzed to determine the point of failure, root cause, and ways to improve the recovery process. Applications, technology, and process architecture are analyzed to determine infrastructure/application interaction and the impact of component failure.

Our experts draw upon deep Web and IT experience, as well as high availability methodologies to perform in-depth, E2E architecture and operations/systems management analysis, complete with action-oriented recommendations and "quick wins".

Available in North America. Call for a Custom Quote.

IT infrastructure analysis

IBM Performance Management, Testing and Scalability Services for remote analysis of IT infrastructure

Services include:

- **Web mining for quality, privacy and accessibility**
- **Web site stress analysis**
- **Server, database and Web server performance checks.**

With state-of-the-art measurement and performance analysis tools, performance issues and bottlenecks can be identified and resolved before they impact your Web applications.

A skilled IBM Global Services team can determine requirements, gather data, scan and analyze Web sites, test Web site performance using simulated virtual users, analyze server statistics and report the results and recommendations. Our specialized and affordable remote performance analysis services can help improve current IT performance and provide accurate input for future planning needs.

Call for a Custom Quote.

Leading-edge integration services

IBM @server iSeries Service Solution



IBM Global Services provides a broad portfolio of leading-edge installation, configuration, integration and support services for IBM @server iSeries and the OS/400 operating systems and applications customized to your individual business needs. Put our industry and product-specific experience to work for you. Call to discuss your specific needs.

Available in North America. Call for a Custom Quote.

**DISCOVER
LEARNING
SERVICES**
at: [ibm.com/ca/
services/learning](http://ibm.com/ca/services/learning)
Develop the right
skills for the
networked world.

**FOR
MORE
GLOBAL
SERVICES**
visit our Web site
at:
[ibm.com/ca/
services](http://ibm.com/ca/services)

Proactively evaluate and assess your e-business systems

Testing Services for e-business



Using state-of-the-art automated measurement and performance analysis tools, performance issues and bottlenecks are identified and resolved before they impact the users of the web applications. An IBM Global Services cross-discipline team of deeply skilled practitioners develop the test plan, create the test scripts, prepare the test systems and data, execute the test, and analyze and report the findings, conclusions, and recommendations in a 6 - 8 week engagement.

Services include:

- **Test strategy development** – Choose the scenarios, functions and workload to be tested and define success criteria; select the appropriate test and performance monitoring tools as well as the level and number of automated test scripts to be written.
- **Test execution** – Develop detailed project plan and task list including the automated test scripts; build the test environment and port applications and data to the test environment; analyze the test data and create and present the final reports.

IBM Global Services leverages our stress testing experience with other clients to create an overall strategy and plan to test the scalability, performance and capacity of mission critical web sites before they are put into production, helping customers improve their site uptime and performance.

Available in North America. Call for a Custom Quote.

Get your MQSeries up and running quickly and efficiently

IBM SmoothStart® Services for MQSeries



An IBM MQSeries IT specialist will help ensure your messaging environment is well designed, implemented and optimized. Services are available to help you implement, link and integrate your MQSeries to supported application interfaces or perform your version-to-version update of MQSeries on over nineteen hardware/software platforms. Whether you are just getting started or if you are an established MQSeries user, IBM Planning Services for MQSeries can help you from start through production and maintenance, including solutions involving the IBM MQSeries Integrator technology.

Call 1-888-426-4343 for more information and to order.

Help prevent availability issues

Risk/Readiness Assessment



Risk/Readiness Assessment services includes:

- **Availability baseline assessment - Analyze business drivers, service agreements, processes, IT standards and current designs, then develop deployment practices.**

A team of subject matter experts identify the critical areas that contribute most significantly to the availability and performance of the web site. Critical areas of study include service level management, event monitoring, problem and change management, test methods/practices, and security.

We use proven IT Management practices to provide tactical fixes. Assessments take from 1 to 4 weeks.

Available in North America. Call for a Custom Quote.

Let the experts come to you

Operational Support Services - Remotely Delivered Services



Put the power of IBM Global Services behind you for your remote support needs.

- **Fast, accurate problem resolution**
- **IBM and multi-vendor operating platforms support**

Access ongoing support management

Operational Support Services - Locally Delivered Services

IBM Technical Assistant and Technical Advocate provide the on-site support you need.

- **IBM licensed software support**
- **Selected non-IBM software technical support assistance including Microsoft Windows® NT® and Windows 2000**
- **Document problems with licensed software products**
- **Help plan specific product currency updates.**

On-site Technical Assistant provides experienced specialists to help eliminate the high cost of in-house training and staffing for peak or special project needs.

On-site Technical Advocate provides a highly qualified IBM professional to act as a business-wide computing problem manager and customer advocate. The advocate can assist with IT planning and systems availability, leveraging the IBM support structure to meet your enterprise-wide needs.

Service is available in U.S. only.

■ **Support of Microsoft middleware such as Microsoft Exchange Server, Microsoft SQL Server, and BackOffice Servers**

■ **IBM Global Services Microsoft Certified Support Center (MCSC)**

■ **Innovative support alternatives for a single system or your entire enterprise.**

We support IBM OS/390, OS/400; AIX, OS/2 and MS-DOS; Microsoft Windows NT, 9x, and 2000; Linux; and others. Support of Microsoft products extends beyond the operating system to middleware, like Microsoft Exchange Server, Microsoft SQL Server, and BackOffice Servers.

We support both IBM and OEM environments, in areas such as preventative maintenance for your key systems and peripherals, including electronic system support options.

Available in North America. Call for a Custom Quote.

Cost effective services for IBM servers

MidRange Express



- **Round-the-clock system monitoring**
- **On-demand technical support.**

MidRange Express is a set of cost-effective, packaged services to help you run your IBM server. With this service, you can supplement your in-house IT with IBM Global Services support.

Professional help desk support offers assistance with hardware; implementation and support of business applications; and connectivity issues for AS/400 and iSeries servers, UNIX systems, including the new IBM @server, pSeries, Windows NT and 2000 systems, including the new IBM @server xSeries.

Service is available in North America.

DISCOVER LEARNING SERVICES

at: ibm.com/ca/services/learning
Develop the right skills for the networked world.

IBM GLOBAL SERVICES

We can help you solve your business problems and create new business opportunities. For more information, visit our Web site at: ibm.com/ca/services



There is a new Nation in our midst.

**It is a Global community of Business People
and Visionaries.**

Of Leaders and Challengers.

**Of those who make decisions and
even change the rules now and then.**

It is a community free to create.

Free to collaborate.

Join us.

Join the citizens of iSeries Nation

ibm.com/eserver/series

IBM  server iSeries



Welcome to the iSeries Nation

**Our citizens celebrate their Triumphs.
They team with their Leaders and Thinkers.
And they are rewarded for their citizenship.**

**Share your success and best practices.
Bring your colleagues to our Nation.**

**Buy and use our offerings and you'll receive
iSeries Nation awards - including the products
and services of both IBM and your fellow citizens.**

Join us.
**This is iSeries Nation.
Our future is Unlimited.
Our Potential is Relentless.**

Join the iSeries Nation

ibm.com/eserver/iseries

IBM  server iSeries

Features/Upgrades

Features, AS/400e	12-14
Features, iSeries	10-12
Upgrade Redirect	9

Peripherals

4400 Thermal Label Printer	16
Infoprint 1000 Network Printer Family	16
Infoprint 70	16
Monitors	19
Printers	15
Printers At-A-Glance	17
Uninterruptible Power System (UPS)	18

Storage

IBM TotalStorage 3490 Tape Subsystem	6
IBM TotalStorage 3494 Enterprise Automated Tape Library	7
IBM TotalStorage 3590 Tape Subsystems	6
IBM TotalStorage 3995 Optical Library	7
IBM TotalStorage 7207 1/4" Cartridge Tape Drive	4
IBM TotalStorage 7208 20GB External 8mm Tape Drive (Model 342)	6
IBM TotalStorage 7210 External DVD-RAM Drive	4
IBM TotalStorage Enterprise Storage Server	7
IBM TotalStorage Multi-purpose Tape Subsystem	6
IBM TotalStorage Ultrium Tape Family	5

Technology that simply works

The latest generation of iSeries servers is the result of IBM's continuing efforts to infuse enterprise-class technology throughout the entire **@server** line. The iSeries incorporates some of the most advanced business computing technology available anywhere. But technology by itself is not important – running your business is. That's why IBM has carefully structured the iSeries to be easy to own, easy to operate, flexible and expandable. All you need do is choose the iSeries that has the right levels of function and performance to meet your business needs.

For more information

Visit **ibm.com/eserver/series/** announce or contact your IBM Marketing Representative or IBM Business Partner.



© Copyright IBM Corporation 2002

IBM Corporation
Integrated Marketing Communications,
Server Group
Route 100
Somers, NY 10589

Produced in the United States of America
4-02

All Rights Reserved

This publication was developed for products and/or services offered in the United States. IBM may not offer the products, features or services discussed in this publication in other countries. The information may be subject to change without notice. Consult your local IBM business contact for information on the products, features and services available in your area.

IBM, the IBM logo, the e-business logo, AIX, AIX 5L, Chipkill, DB2, DB2 Universal Database, eLiza, MQSeries, POWER4, pSeries, RS/6000, S/390, SP, WebSphere and zSeries are trademarks or registered trademarks of International Business Machines Corporation in the United States, other countries, or both.

Java and all Java-based trademarks are trademarks of Sun Microsystems, Inc. in the United States, other countries, or both.

Linux is a registered trademark of Linus Torvalds.

UNIX is a registered trademark of The Open Group in the United States and other countries.

Other company, product, and service names may be trademarks or service marks of others.

IBM hardware products are manufactured from new parts, or new and used parts. Regardless, our warranty terms apply.

Photographs show engineering and design models. Changes may be incorporated in production models.

Copying or downloading the images contained in this document is expressly prohibited without the written consent of IBM.

This equipment is subject to FCC rules. It will comply with the appropriate FCC rules before final delivery to the buyer.

Information concerning non-IBM products was obtained from the suppliers of these products. Questions on the capabilities of the non-IBM products should be addressed with the suppliers.

All performance estimates are provided "AS IS" and no warranties or guarantees are expressed or implied by IBM. Buyers should consult other sources of information, including system benchmarks, to evaluate the performance of a system they are considering buying.