



Session: 440182

iSeries. mySeries.

iSeries Operations Console Basics

Marvin Levi

© Copyright IBM Corporation, 2004. All Rights Reserved.
This publication may refer to products that are not currently
available in your country. IBM makes no commitment to make
available any products referred to herein.

IBM CONFIDENTIAL UNTIL ANNOUNCED

iSeries. mySeries.



iSeries Operations Console Basics

Evaluation

- Session: 440182
- Agenda Key: 41CR
- Session Title: iSeries Operations Console Basics
- Speaker: Marvin Levi

© 2004 IBM Corporation

IBM CONFIDENTIAL UNTIL ANNOUNCED

iSeries. mySeries.



iSeries Operations Console Basics

Topics

- What is Operations Console
- Configuration Types
- LAN Configuration Demo
- Security
- Requirements
- Questions?

What's New?



iSeries Operations Console Basics

Operations Console Sessions:

•41CR	8:00AM	10/20/04	440182 Basics
•44CJ	12:30PM	10/20/04	409033 Intermediate
•53CL	11:00AM	10/21/04	409032 Advanced

iSeries Operations Console Basics

Topics

- What is Operations Console
- Configuration Types
- LAN Configuration Demo
- Security
- Requirements
- Questions?

Unique Device ID

Access Password

Secure Socket Layer

What's New?

Stable LAN Connection

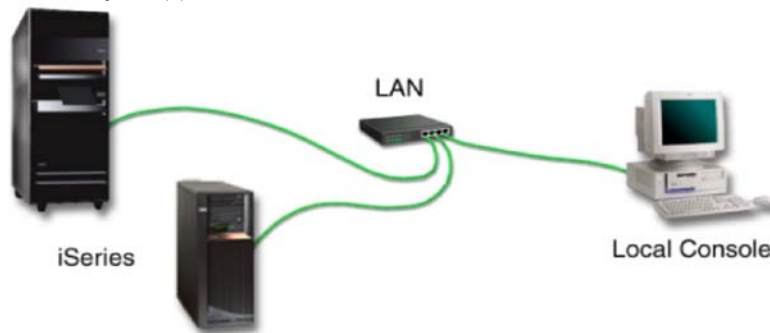
Operations Console

- Console Take Over
- IPL Mode
- Recoverability
- Secure Socket Layer
- Stable LAN Connection
- Unique Device ID
- Simplified Configuration
- Access Password
- V5R3

iSeries Operations Console Basics

What is Operations Console

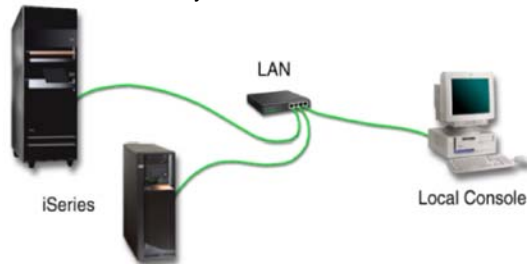
- Operations Console allows a personal computer (PC) to become a local or remote console to your iSeries server. This eliminates the need for a twinaxial connection and allows a system administrator to monitor/control the system(s) from another location.



iSeries Operations Console Basics

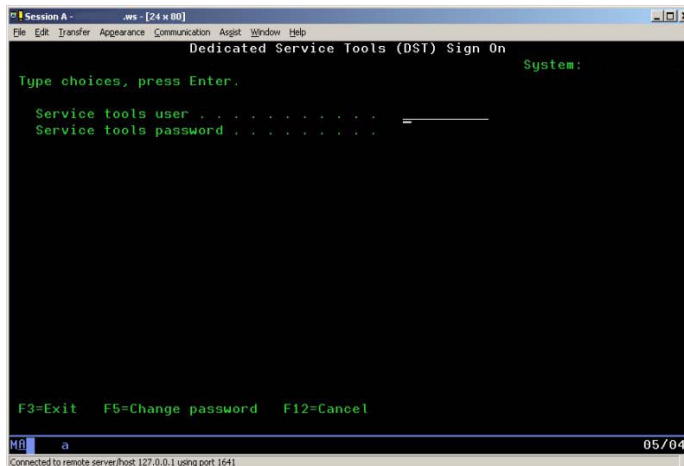
What is Operations Console

- Operations Console uses 5250 emulation provided by either iSeries Access for Windows or IBM® Personal Communications to emulate a console. To emulate an iSeries control panel, Operations Console provides a graphical remote control panel or virtual control panel. Operations Console can use a local area network (LAN), TCP/IP-based connectivity in addition to direct cable attachment. It supports dial-in connections from remote PCs to PCs that are directly attached to iSeries servers.



iSeries Operations Console Basics

The Console

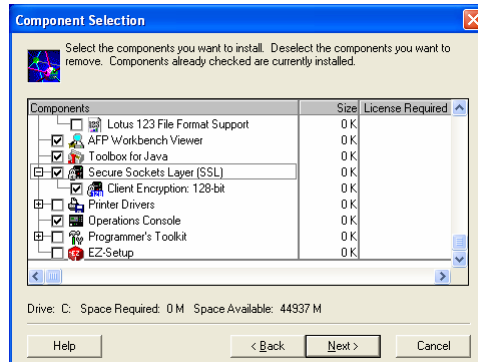


What is Operations Console

- Does not replace Twinax but is an alternative
- Only one device can be the console
- PC as a console allows remote control
- Uses 5250 emulation
- Part of Client Access Install Option

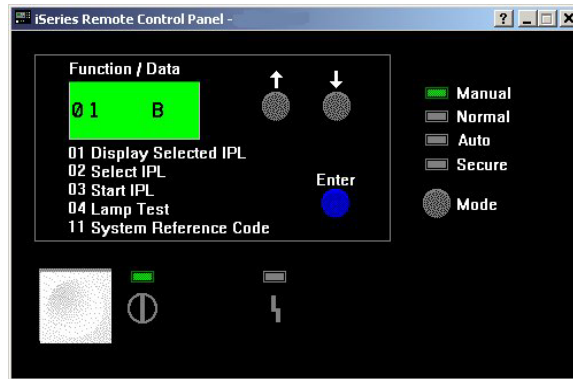
What is Operations Console

Installation: part of iSeries Access for Windows



What is Operations Console

Remote Control Panel

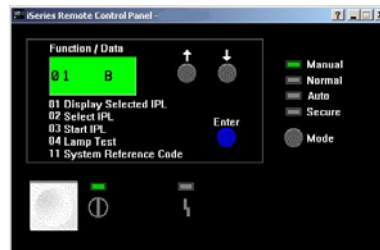


Virtual Control Panel

What is Operations Console

Remote Control Panel

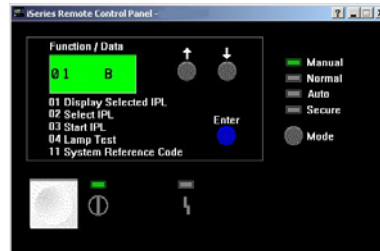
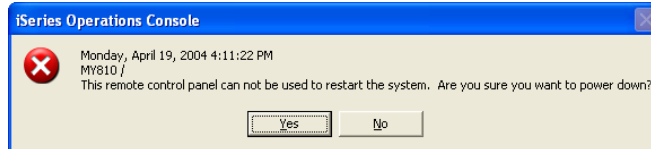
- Graphical representation of the system Control panel
- Allows change of modes, IPL, IPL type
- Displays System Reference Codes
- Provides a control panel for secondary partitions
- Allows secondary partitions power on and off functionality



What is Operations Console

Remote Control Panel

- Primary LAN power off now displays a warning message



iSeries Operations Console Basics

Configuration Types

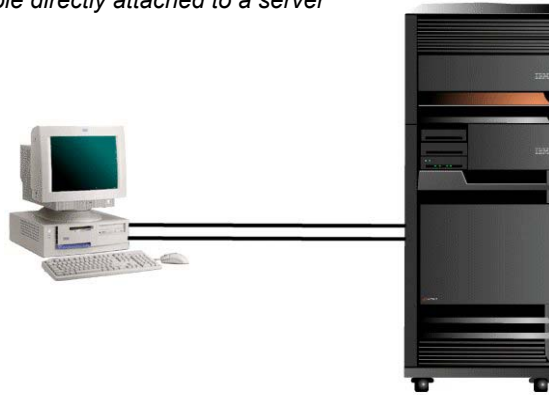
- Local console directly attached to a server
- Local console on a network (LAN)
- Remote console through dial-up support

V5R3 no longer supports
- Local console through dial-up support



Configuration Types

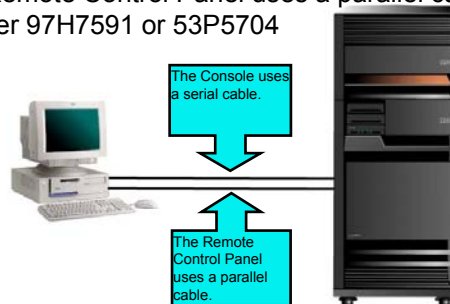
Local console directly attached to a server



Configuration Type

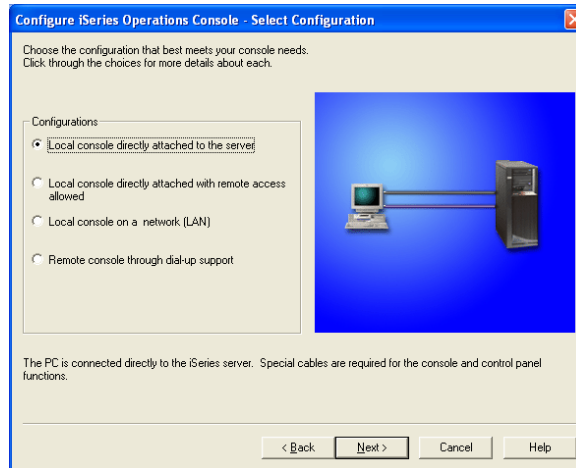
Local console directly attached to a server

- Console uses a serial cable part number 97H7556 or 97H7557
- The Remote Control Panel uses a parallel cable part number 97H7591 or 53P5704



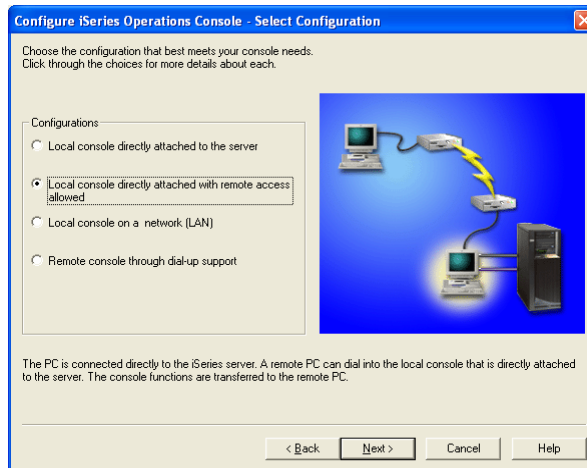
Configuration Type

Local console directly attached to a server



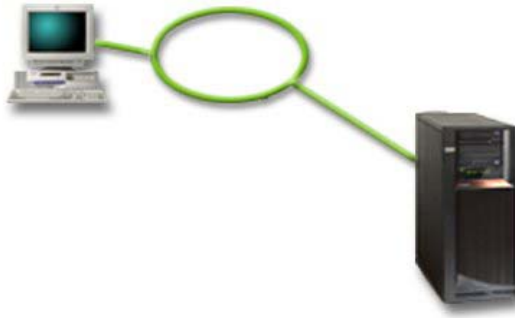
Configuration Type

Local console directly attached with remote access allowed



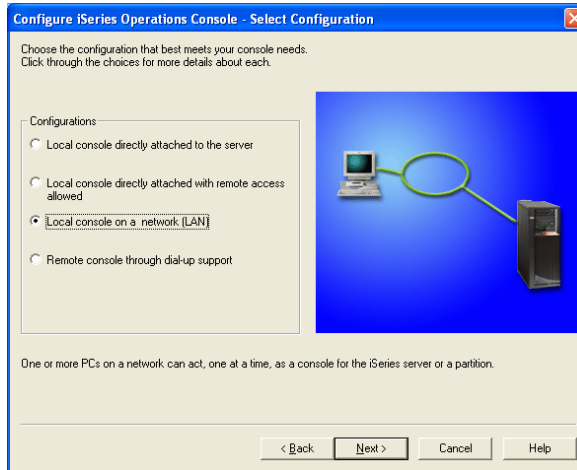
Configuration Types

Local console on a network (LAN)



Configuration Types

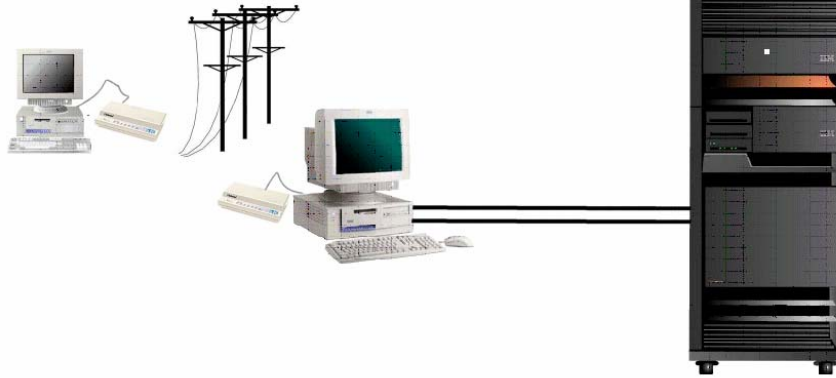
Local console on a network (LAN)





Configuration Types

Remote console through dial-up support



© 2004 IBM Corporation

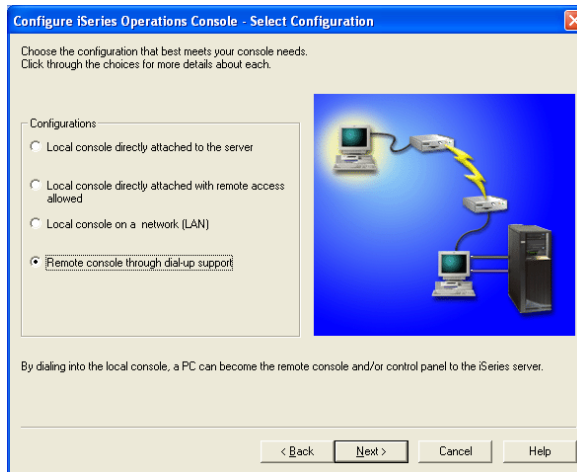
IBM CONFIDENTIAL UNTIL ANNOUNCED

iSeries. mySeries.



Configuration Types

Remote console through dial-up support



© 2004 IBM Corporation

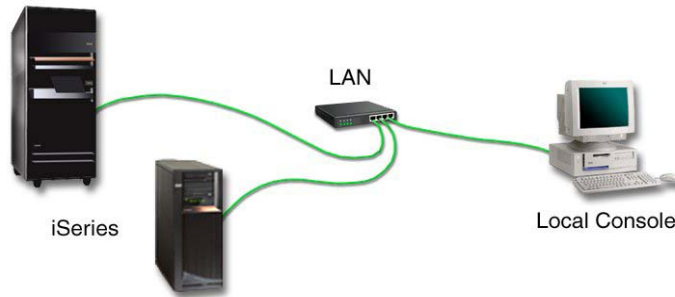
IBM CONFIDENTIAL UNTIL ANNOUNCED

iSeries. mySeries.



iSeries Operations Console Basics

LAN Configuration Demo



© 2004 IBM Corporation

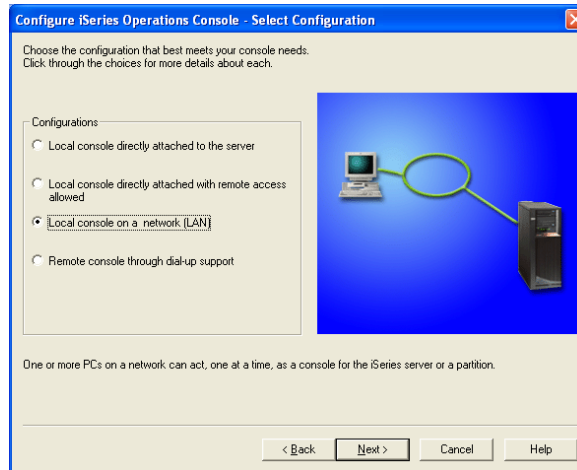
IBM CONFIDENTIAL UNTIL ANNOUNCED

iSeries. mySeries.



iSeries Operations Console Basics

LAN Configuration Demo



© 2004 IBM Corporation

IBM CONFIDENTIAL UNTIL ANNOUNCED


iSeries. mySeries.



iSeries Operations Console Basics

LAN Configuration Demo

Configure iSeries Operations Console - Specify Service Host Name - DEMO1



To configure an Operations Console connection, you must specify the iSeries service host name. If the connection has never been assigned or configured before, you will be assigning the name and network data in this wizard.

For an existing configuration, match the existing service host name defined in Dedicated Service Tools (DST). To find the service host name, go into DST and use the Configuration Service Tools Adapter display.

Note: The service host name is the name that identifies the card used for Operations Console. It may not be the TCP/IP address of the server or name of the PC.

What is the service host name of the iSeries server you are connecting to?

iSeries service host name:

Target partition:

< Back Next > Cancel Help

© 2004 IBM Corporation

IBM CONFIDENTIAL UNTIL ANNOUNCED


iSeries. mySeries.



iSeries Operations Console Basics

LAN Configuration Demo

Configure iSeries Operations Console - Specify Interface Information - DEMO1



What is the TCP/IP information and serial number of the system to which you are making a service connection?

iSeries service host name: DEMO1

Service TCP/IP Address:

Service subnet mask:

Service gateway address 1:

Service gateway address 2:

iSeries serial number:

< Back Next > Cancel Help

© 2004 IBM Corporation

IBM CONFIDENTIAL UNTIL ANNOUNCED


iSeries. mySeries.



iSeries Operations Console Basics

LAN Configuration Demo

Configure iSeries Operations Console - Specify Service Tools Device ID - DEMO1



To use restricted iSeries functions securely using a LAN connection, you must specify the following information. This protects access to iSeries service functions such as the console and remote control panel.

For new configurations, QCONSOLE can be used as the default. For existing configurations, this information must match the corresponding service tools device ID and password on the iSeries server.

Service tools device ID for this PC:

Password:

Confirm password:

< Back Next > Cancel Help

© 2004 IBM Corporation

IBM CONFIDENTIAL UNTIL ANNOUNCED


iSeries. mySeries.



iSeries Operations Console Basics

LAN Configuration Demo

Configure iSeries Operations Console - Specify Access Password - DEMO1



On the previous panel you specified the Operations Console service tools device ID and password on the PC. Now you need to specify a password to protect the console service tools device ID.

You will use this password every time you start Operations Console and make a LAN connection to the server.

Access Password for Operation Console Service Tools Device ID

New Password:

Confirm password:

< Back Next > Cancel Help

© 2004 IBM Corporation

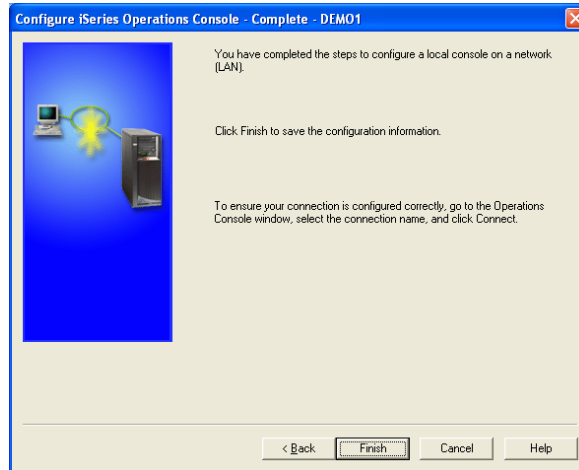
IBM CONFIDENTIAL UNTIL ANNOUNCED

iSeries. mySeries.



iSeries Operations Console Basics

LAN Configuration Demo



© 2004 IBM Corporation

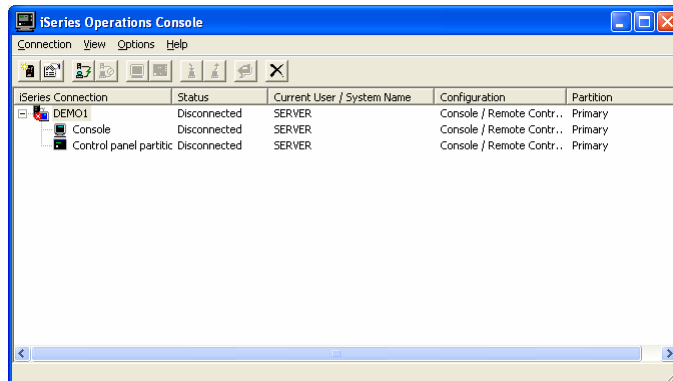
IBM CONFIDENTIAL UNTIL ANNOUNCED

iSeries. mySeries.



iSeries Operations Console Basics

LAN Configuration Demo



© 2004 IBM Corporation

IBM CONFIDENTIAL UNTIL ANNOUNCED

iSeries. mySeries.

iSeries Operations Console Basics

Security



Security

Saved, encrypted, never have to reset – QCONSOLE default

Password is always initially QCONSOLE uppercase

Session A - ws - [24 x 80]

File Edit Transfer Appearance Communication Assgt Window

Work with

Type option, press Enter.

1=Create 2=Reset
4=Display 5=Enable
7=Change attributes 8=Change

Opt	Device ID	Description
1	VCP	
2	DEMOA	MARVIN'S THIN
3	DEMOB	MARVIN'S PC
4	DEMOB	MARVIN'S LAB
5	DEMOB	USED BY MARVIN
6	QCONSOLE	QCONSOLE

F3=Exit F5=Refresh F12=Cancel

Connected to remote server/host:127.0.0.1 using port:1641.

Configure iSeries Operations Console - Specify Service Tools Device ID - DEMO1

To use restricted iSeries functions securely using a LAN connection, you must specify the following information. This protects access to iSeries service functions such as the console and remote control panel.

For new configurations, QCONSOLE can be used as the default. For existing configurations, this information must match the corresponding service tools device ID and password on the iSeries server.

Service tools device ID for this PC:

Password:

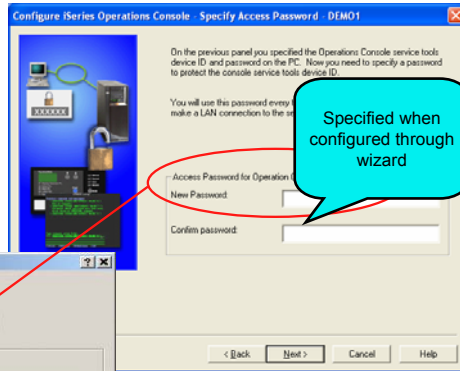
Confirm password:

< Back Next > Cancel Help

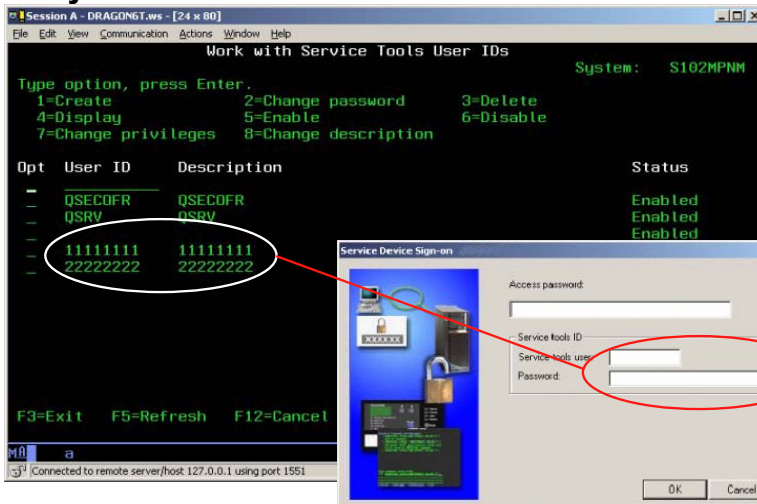
Security

The Access password can be the same for all configurations on all PCs.

Prompted for when connecting



Security



iSeries Operations Console

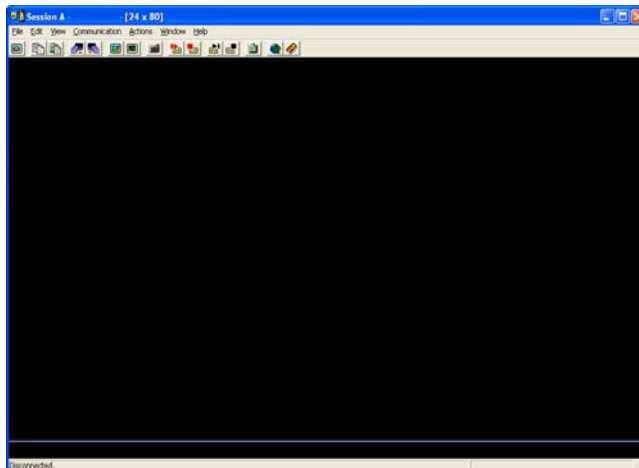
Requirements

- Operations Console available on V5R1 OS/400
- iSeries Access for Windows (5722-XE1)
- Windows Operating Systems NT, 2000, 2003 and XP

Operating System	Operations Console PC
Windows NT 4.0	Pentium 300 MHz recommended 64 MB memory minimum (128 MB recommended)
Windows 2000, 2003, XP Professional	Pentium 500 MHz (P6 or equivalent compatible microprocessor) 256 MB memory minimum

iSeries Operations Console Basics

Where's the console?



iSeries Operations Console Basics

Where's the console?

```

Session A [74 x 80]
File Edit View Communication Actions Window Help
Console Information Status
System: 10CSX8

Date and time for previous signon . . . : 04/12/04 11:41:34
Previous action taken date and time . . : 04/12/04 11:41:34

Current console user ID . . . . . : 11111111
Current console type . . . . . : 3
Take over the console . . . . . : YES

PC internet address . . . . . : 9.10.111.67

Server internet address . . . . . : 9.5.251.32
Server resource name . . . . . : CMN05
Server adapter type . . . . . : 2838
Server adapter model . . . . . : 001
Server adapter serial number . . . . . : 10-1269042
Frame ID . . . . . : 1
Card slot . . . . . : C03

Current console device ID . . . . . : DEM0R

F3=Exit F10=Takeover console connection F12=Cancel

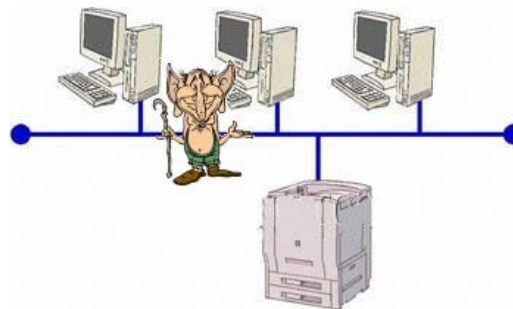
HR a 01/001
137 Connected to remote server (host 127.0.0.1 using port 3003)
    
```



iSeries Operations Console Basics

Lost connectivity –

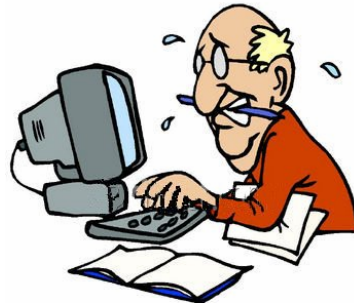
- *Improved recovery*
- *Saved sessions*
- *Take over console*
- *Device ID synchronization*



iSeries Operations Console Basics

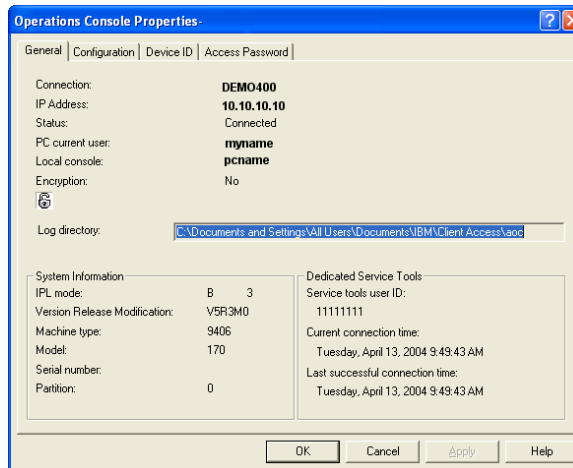
Simplified Configuration

- No reconfiguration wizard
- Property Page values
- SRC History
- Connection only



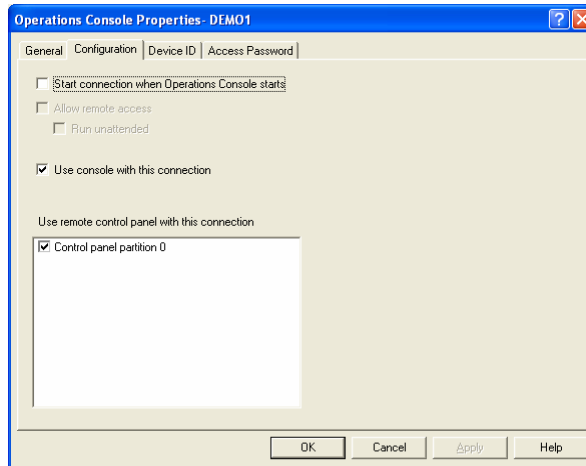
iSeries Operations Console Basics

Property page configuration information



iSeries Operations Console Basics

Property page configuration change



iSeries Operations Console Basics

Summary

- What is Operations Console
- Configuration Types
- LAN Configuration Demo
- Security
- Requirements

Questions?



iSeries Operations Console Basics

Evaluation

- Session: 440182
- Agenda Key: 41CR
- Session Title: iSeries Operations Console Basics
- Speaker: Marvin Levi



iSeries Operations Console Advanced Basics

Trademarks

- The following terms are trademarks of International Business Machines Corporation in the United States, or other countries, or both:
 - Application System/400
 - AS/400
 - AS/400e
 - Client Access
 - iSeries Access for Windows
 - IBM
 - iSeries
 - Operating System/400
 - OS/400
 - 400
- Microsoft, Windows, Windows NT, Windows 2000, Windows Me, Windows 98, Windows XP, and the Windows logo are trademarks of Microsoft Corporation in the United States, other countries, or both.
- Pentium and Intel are trademarks of Intel Corporation in the United States, other countries, or both.
- Other company, product, and service names may be the trademarks or service marks of others.



Trademarks and Disclaimers

© IBM Corporation 1994-2003. All rights reserved.
References in this document to IBM products or services do not imply that IBM intends to make them available in every country.

The following terms are trademarks or registered trademarks of International Business Machines Corporation in the United States, other countries, or both:
Instruction: Refer to the following URL: <http://w3.ibm.com/legal/iplwts>. Edit the list below, IBM subsidiary statement, and special attribution companies which follow so they coincide with your presentation.

AS/400	IBM
AS/400e	IBM (logo)
eServer	iSeries
	OS/400

Lotus and SmartSuite are trademarks of Lotus Development Corporation and/or IBM Corporation in the United States, other countries, or both.
Instruction: For a complete list of Lotus/IBM trademarks, see www.lotus.com/lotus/information.nsf/firstpages/copyright and edit the above statements to coincide with your presentation.

MMX, Pentium, and ProShare are trademarks or registered trademarks of Intel Corporation in the United States, other countries, or both.
Microsoft and Windows NT are registered trademarks of Microsoft Corporation in the United States, other countries, or both.
Java and all Java-based trademarks are trademarks of Sun Microsystems, Inc. in the United States, other countries, or both.
SET and the SET Logo are trademarks owned by SET Secure Electronic Transaction LLC.
C-bus is a trademark of Corollary, Inc. in the United States, other countries, or both.
UNIX is a registered trademark of The Open Group in the United States and other countries.
Other company, product or service names may be trademarks or service marks of others.

Information is provided "AS IS" without warranty of any kind.

All customer examples described are presented as illustrations of how those customers have used IBM products and the results they may have achieved. Actual environmental costs and performance characteristics may vary by customer.

Information in this presentation concerning non-IBM products was obtained from a supplier of these products, published announcement material, or other publicly available sources and does not constitute an endorsement of such products by IBM. Sources for non-IBM list prices and performance numbers are taken from publicly available information, including vendor announcements and vendor worldwide homepages. IBM has not tested these products and cannot confirm the accuracy of performance, capability, or any other claims related to non-IBM products. Questions on the capability of non-IBM products should be addressed to the supplier of these products.

All statements regarding IBM future direction and intent are subject to change or withdrawal without notice, and represent goals and objectives only. Contact your local IBM office or IBM authorized reseller for the full text of the specific Statement of Direction.

Some information in this presentation addresses anticipated future capabilities. Such information is not intended as a definitive statement of a commitment to specific levels of performance, function or delivery schedules with respect to any future products. Such commitments are only made in IBM product announcements. The information is presented here to communicate IBM's current investment and development activities as a good faith effort to help with our customers' future planning.

Performance is based on measurements and projections using standard IBM benchmarks in a controlled environment. The actual throughput or performance that any user will experience will vary depending upon considerations such as the amount of multiprogramming in the user's job stream, the I/O configuration, the storage configuration, and the workload processed. Therefore, no assurance can be given that an individual user will achieve throughput or performance improvements equivalent to the ratios stated here.

Photographs shown are of engineering prototypes. Changes may be incorporated in production models.

© 2004 IBM Corporation

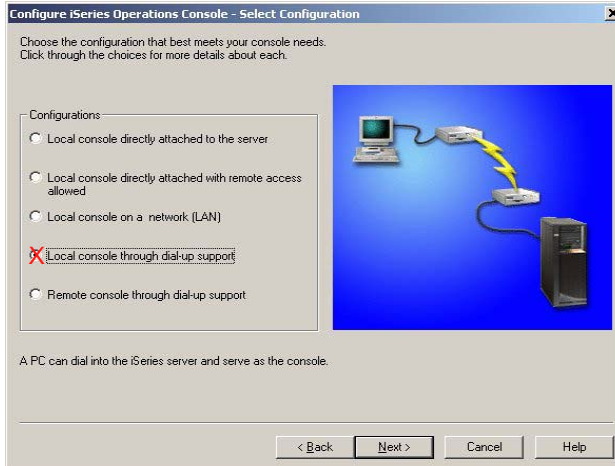
IBM CONFIDENTIAL UNTIL ANNOUNCED

iSeries. mySeries.



iSeries Operations Console Basics

This page has changed in V5R3



© 2004 IBM Corporation

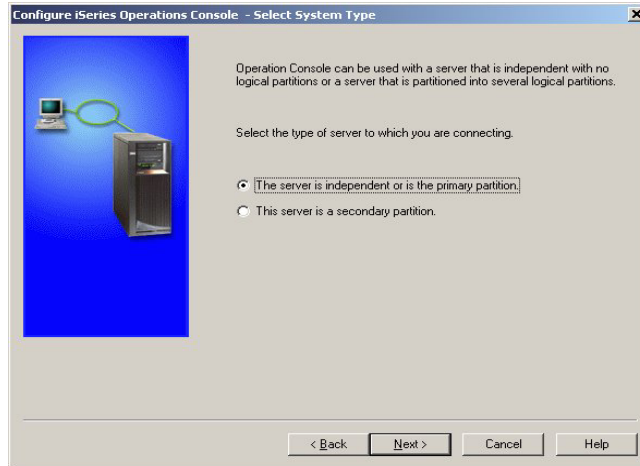
IBM CONFIDENTIAL UNTIL ANNOUNCED

iSeries. mySeries.



iSeries Operations Console Basics

LAN Configuration Demo – This page was removed in V5R3



© 2004 IBM Corporation

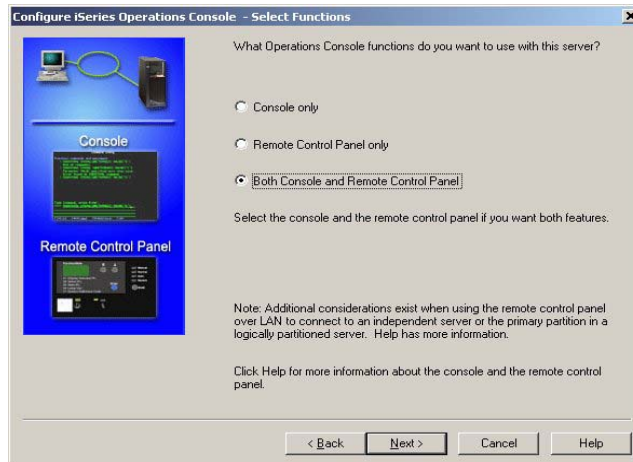
IBM CONFIDENTIAL UNTIL ANNOUNCED

iSeries. mySeries.



iSeries Operations Console Basics

LAN Configuration Demo – This page was removed in V5R3



© 2004 IBM Corporation

IBM CONFIDENTIAL UNTIL ANNOUNCED

iSeries. mySeries.