



IBM eServer™ iSeries™

Session:

Using iSeries Access for Web (V5R3) in a web-connected world

Carole Miner
IBM Rochester
Client Integration Development
cminer@us.ibm.com

© Copyright IBM Corporation, 2003. All Rights Reserved.
This publication may refer to products that are not currently
available in your country. IBM makes no commitment to
make available any products referred to herein.

IBM eServer iSeries



Table of Contents

- What is Access for Web?
- How to connect
- Customizing, controlling access to functions
- email support
- 5250
- Print
- IFS
- Database
- My Folder
- Integration with Sametime
- Commands
- Messages
- Jobs
- Other
- Build your own 'front page' to iSeries
- Support for IBM WebSphere Portal products

Agenda

Are you tired of trying to keep software up-to-date on your networked PCs?

- Then you should use iSeries Access for Web in your network

Do you have an iSeries with 70 CPW and 256 MB of Memory?

- Then you can use iSeries Access for Web...

Are you looking for a simple solution that you can set up in a couple of hours?

- Then iSeries Access for Web is for you...



Abstract:

The iSeries Access Family has expanded its offering to include a browser-based option called 'iSeries Access for Web'.

Many iSeries customers are looking for a fast, easy, and zero-admin alternative for connecting to their servers -- and iSeries Access for Web is that solution! Come to this session to learn how this product can simplify your PC network administration while at the same time offering end user functions customers help come to expect with Client Access products.

By the end of this session, attendees will be able to:

- See how 5250, database and IFS access can be used from a browser.
- See how an administrator can set up front pages for different groups of users.
- See how users can work with printers, print jobs, etc. on the server.

iSeries Access for Web 5722-XH2

V5R3 beta available since 9/03

In 1/31/2004, beta converts to web-download GA product called V5R3 of iSeries Access for Web



Front Page = www.<iSeries>.com/webaccess/iWAHome

What is iSeries Access for Web?

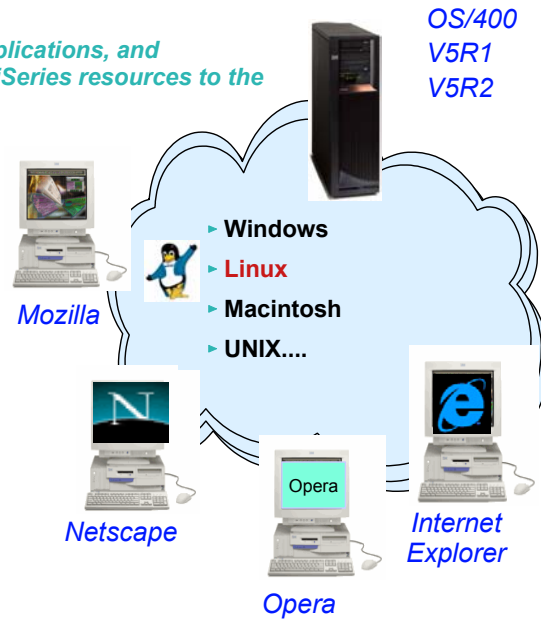
End users can leverage business information, applications, and resources across an enterprise by extending the iSeries resources to the client desktop through a web browser

Provides access to iSeries through a browser

- 5250 access
- Access to database, integrated file system, printers, output queues, jobs
- Can run batch commands and send/receive messages

It has the following advantages:

- Is server based
- Requires only a browser on the client, no configuration required at desktop, no applets installed on desktop
- Uses industry standard protocols - HTTP, HTTPS and HTML



Notes: Browsers supported

Netscape

- Version 4.7 (AIX (R) , Linux)
- Version 6.2 (Windows)

Microsoft (R) Internet Explorer

- Version 6.0 (Windows)

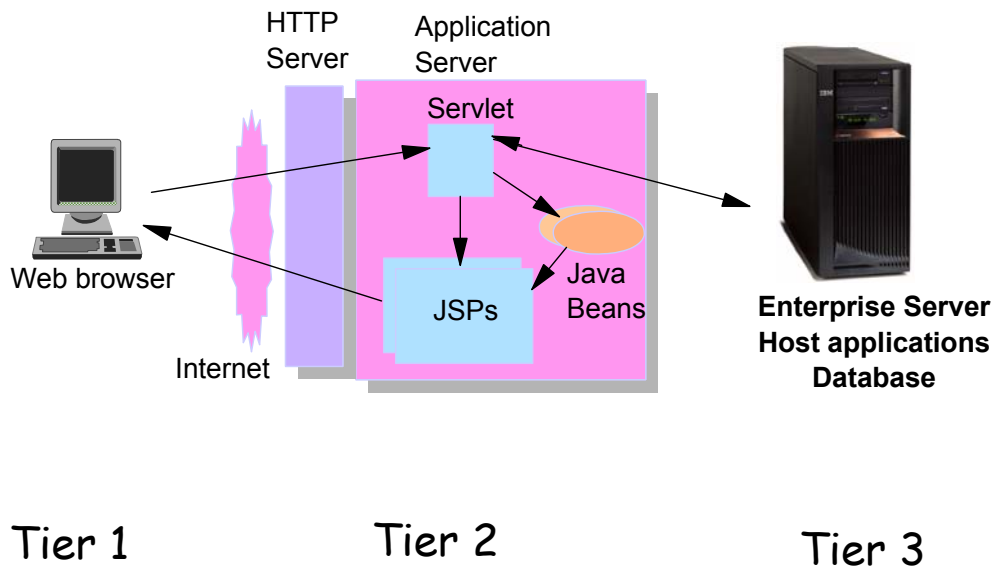
Opera

- Version 5.0 (Linux)
- Version 6.0 (Windows)

Mozilla

Other browsers (for these and other platforms) that support the current HTTP and HTML specifications should work but have not been tested with iSeries Access for Web.

First you need a web application server...



Web application server options

There are several Web applications servers that can run on iSeries:

- WebSphere Application Server Version 5.0 Express for iSeries
- WebSphere Application Server Version 5.0 Base
- WebSphere Application Server Version 5.0 Network Deployment
- WebSphere Application Server Advanced Edition Single Server V4
- WebSphere Application Server Advanced Edition V4
- WebSphere Application Server Standard Edition V3.5
- WebSphere Application Server Advanced Edition V3.5



- 300 CPW
- 512 MB memory

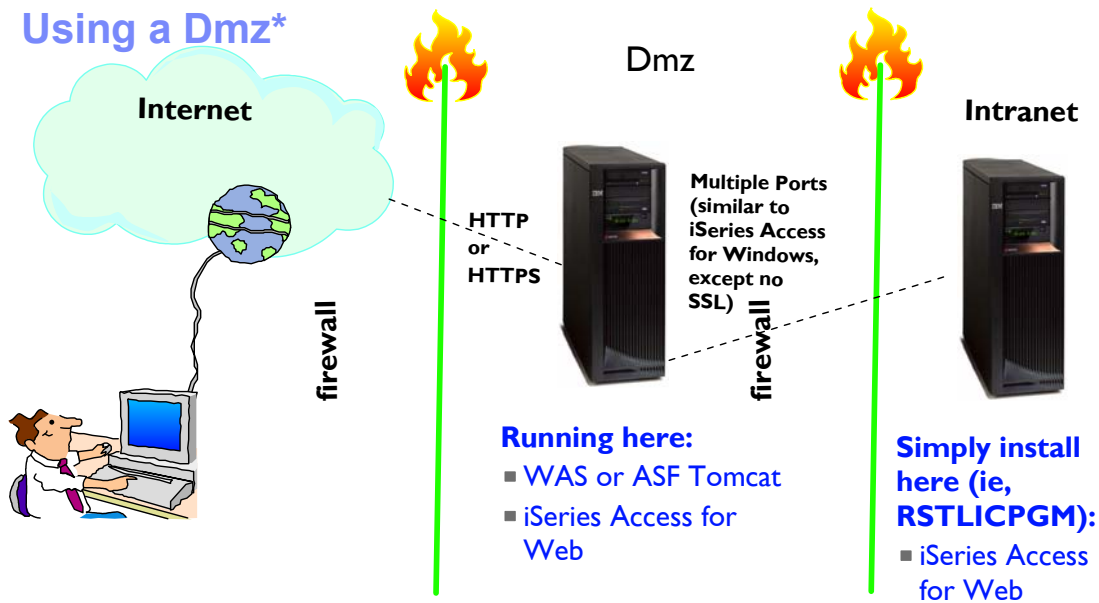
- ASF Tomcat (included in IBM HTTP Server for iSeries)



- 70 CPW
- 256 MB memory

- The ASF Tomcat web application server is part of the no-charge IBM HTTP Server for iSeries.
- ASF Tomcat PTFs are delivered within the IBM HTTP Server for iSeries Group PTFs.

Using a Dmz*



*Dmz = Demilitarized Zone

Port Requirement Comparison

iSeries Access for Windows (5722-XE1)*

- Port 449 for Port Mapper
- Port 8476 (9476) for Sign-on
- Port 8470 (9470) for Central
- Port 8472 (9472) for Data Queues
- Port 8471 (9471) for Database
- Port 8475 (9475) for Remote Commands
- Port 8473 (9493) for Print
- Port 2001 (2010) for Web Admin
- Port 446 (448) for DDM
- Port 23 (992) for Telnet
- Port 137, 138 for NetServer
- Port 8480 for USF
- Port 389 (636) for LDAP
- Port 5555 (5566) for Mgmt Central
- Port 53 if using DNS Server

iSeries Access for Web

- HTTP (Port 80 default or any port)
- Port HTTPS Port 443 or any port)

* See Information APAR II12227 for detailed information

Performance...???

Does running Access for Web affect server performance?

- Products like Access for Web and HATS LE don't put much strain on the system...

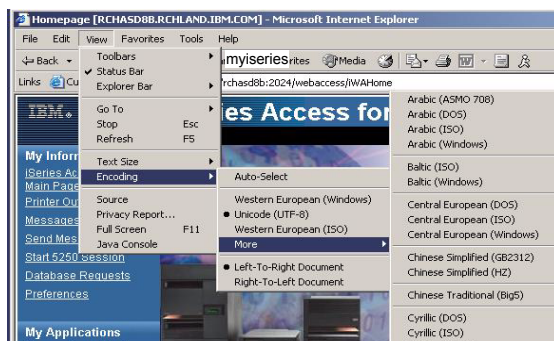
How does the web application server affect performance?

- If you have an older, under-powered iSeries, then performance may not be good...if you have a newer, bigger iSeries, then performance won't be an issue (unless you already are running your system at maximum capacity).
- Use the **IBM eServer Workload Estimator** to see what performance will be if WAS is added to your system at: <http://www-912.ibm.com/wle/EstimatorServlet>
- There is also a Workload Estimator for **WebFacing** Workloads. Access for Web will be similar (depending on what functions of Access for Web are being used).

Fine-tuning your web application server

- If you are running WebSphere Application Server, refer to Chapter 3 of the Buying and Selling Guide for WAS. It has many good tips for getting WAS to perform optimally.
- Go to the iSeries WebSphere web page at <http://www-1.ibm.com/servers/eserver/iseries/software/websphere/index2.html>

Fully Integrated with your browser...

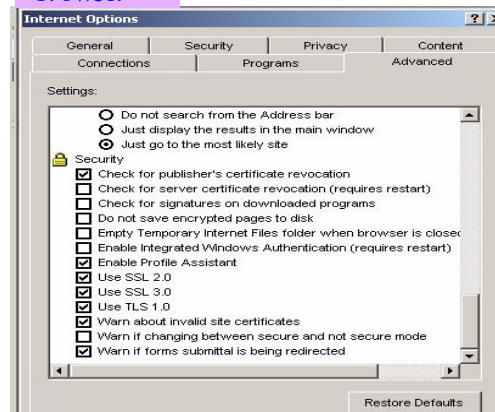


- Use any code page available in your browser
- iSeries Access for Web, V5R2, translated into 33 NLVs (including DBCS)

- Use any keyboard setting available in Windows
- Users will see all iSeries screens in primary OS/400 language

Font Size

- Set up your SSL through your browser



Notes: Language Enablement

iSeries Access for Web - 5722-XH1, V5R1

iSeries Client Access Family (5722-XW1) ships with the locked media. However, iSeries Access for Web (5722-XH1) nor WebSphere Host Publisher are not on the V5R1 locked media but ship on separate CDs.

iSeries Access for Web is English only. English only is defined to mean:

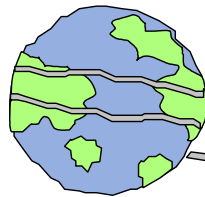
- The product is not translated to other languages.
- The product is NLV enabled.
- The install media contains all language options but each option is populated with English MRI, and the IBM Distribution Center language "bins" contain the English MRI. When an order is placed for a specific language, the media package will have English MRI.
- When you specify the language you want installed, the proper language-specific directories will be created, but the MRI modules will be English modules.

iSeries Access for Web - 5722-XH2, V5R2

iSeries Client Access Family (5722-XW1) ships with the locked media. iSeries Access for Web (5722-XH2) ships on the V5R2 locked media. WebSphere Host Publisher is on separate CDs.

iSeries Access for Web, 5722-XH2, V5R2 is available in the following NLVs:

- | | |
|-----------------------|----------------------|
| • French | • Slovenian |
| • Italian MNCS | • Danish |
| • Swedish | • Norway |
| • Hebrew | • Portuguese |
| • German MNCS | • Simplified Chinese |
| • Finnish | • Arabic |
| • Japan | • Belgium Dutch |
| • Traditional Chinese | • Slovakian |
| • Romanian | • Dutch |
| • Brazil Portuguese | • Croatian |
| • Czech | • French Belgium |
| • German | • Italian |
| • Russian | • Greek |
| • Polish | • Korean |
| • Spanish | • French Canadian |
| • Turkish | • Hungarian |



Let's Connect !



IBM eServer iSeries

IBM

Start Your Browser...

Open browser

Key in iSeries url

Prompted for OS/400 user id and password

Enter Network Password

Please type your user name and password.

Site: iseriesd.dfw.ibm.com

Realm: ISeriesD.DFW.IBM.COM

User Name:

Password:

☐ Save this password in your password list

OK Cancel

© 2003 IBM Corporation

IBM eServer iSeries

IBM

Front Page = www.<iseries>.com/webaccess/iWAHome

Key in iSeries url

Prompted for OS/400 user id and password

My Information

[iSeries Access for Web Main Page](#)
[Printer Output](#)
[Messages](#)
[Send Message](#)
[Database Requests](#)
[Preferences](#)

My Applications

You can have links to your web applications and iSeries Access for Web on your own home page! For more information about customization, see Customizing iSeries Access for Web below.

Related Products

[WebSphere Application Server for iSeries](#)
[WebSphere Development Tools for iSeries](#)
[WebSphere Development Studio for iSeries](#)

Welcome to iSeries Access for Web!

The iSeries Client Access team has a history of providing easy-to-use and highly functional PC-to-iSeries server connectivity solutions -- and now we are excited to provide a new generation of software that enables you to access your iSeries server information and resources through a web browser! For more information about iSeries Access for Web, see [What is iSeries Access for Web](#) below.

This web page is an example of integrating parts of iSeries Access for Web into your own homepage. In this example, the left navigation bar has Access

Rochester Information

[City Information](#)
[Movies](#)
[Mayo Clinic](#)

Rochester Weather

[SkyCam](#)

Rochester News

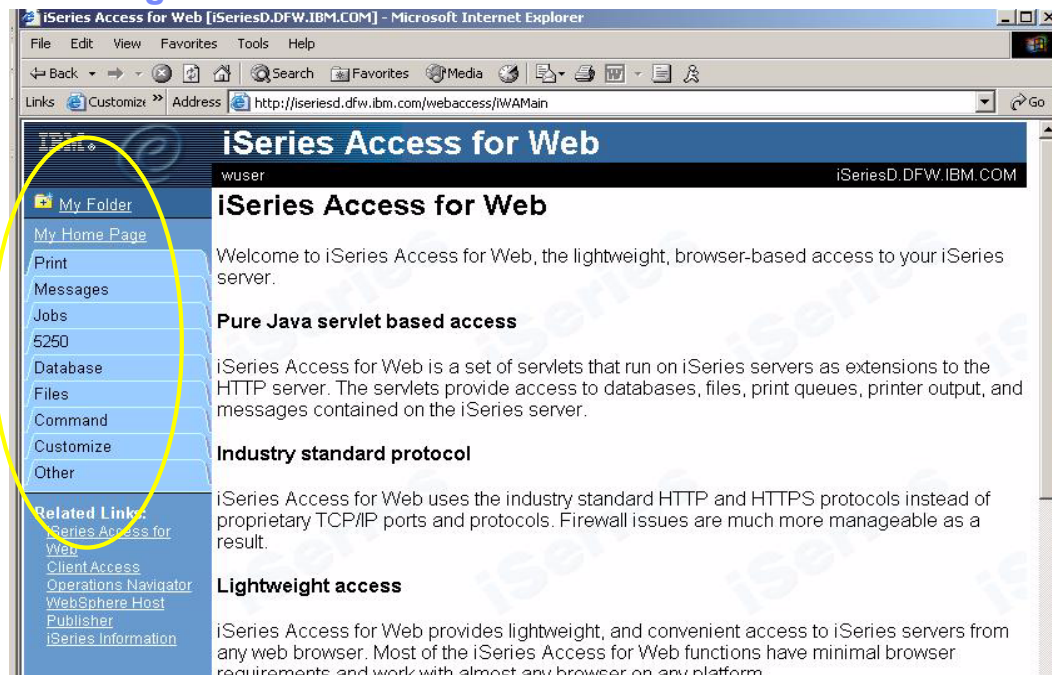
[Post Bulletin](#)
[KITC](#)

Telephone Directory

[Find a person](#)
[Find a business](#)

© 2003 IBM Corporation

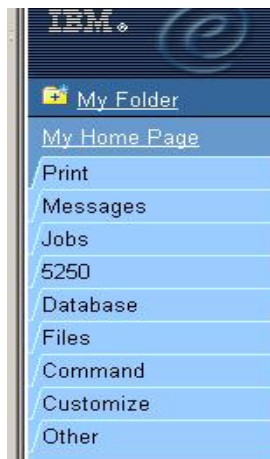
Main Page = www.<iseries>.com/webaccess/iWAMain



Functions You Can Perform with V5R2 version...

★ My Personal Folder

- Print
 - Printer output
 - Printers
 - Internet Printers
 - Printer shares
 - Output Queues
- Database
 - Tables
 - My Requests
 - Run SQL
 - Copy Data to Table
 - Import Requests
- ★ 5250
 - Start 5250 Session
- Commands
 - Run commands (Batch)



■ Files

- Browse Files (in IFS)
- File Shares (in NetServer)

■ Messages

- Display Messages
- Send Messages
- Operator Messages
- Message Queue

★ Jobs

- User Jobs
- Server Jobs

■ Customize

- Administrator controls access to functions by user or group of users:
- Can customize front page
- Can limit what tasks can be performed

★ New in V5R2 Access for Web, 5722-XH2

Functions You Can Perform with the V5R3 version...



- My Personal Folder
- Print
 - ▶ Printer output
 - ▶ PDF Printer output
 - ▶ Printers
 - ▶ PDF Printers
 - ▶ Internet Printers
 - ▶ Internet Printer Shares
 - ▶ Printer shares
 - ▶ Output Queues
- Database
 - ▶ Tables
 - ▶ My Requests
 - ▶ Run SQL
 - ▶ Copy Data to Table
 - ▶ Import Request
 - ▶ Extract Server Data
- 5250
 - ▶ Active Sessions
 - ▶ Start 5250 Session
 - ▶ Configured Sessions
- Commands
 - ▶ Run commands
 - ▶ My commands
 - ▶ Search
- Files
 - ▶ Browse Files
 - ▶ File Shares
- Messages
 - ▶ Display Messages
 - ▶ Send Messages
 - ▶ Operator Messages
 - ▶ Message Queue
- Jobs
 - ▶ User Jobs
 - ▶ Server Jobs
- Customize
 - ▶ Preferences
 - ▶ Policies
 - ▶ Settings
- Download
- Other
 - ▶ Bookmarks
 - ▶ Change Password
 - ▶ Connection Pool
 - ▶ Status
 - ▶ Trace
 - ▶ About

Access for Web, 5722-XH2

Controlling Access to iSeries functions

When an iSeries Access for Web user attempts to access any function on the iSeries, the following sequence of checks are made to authenticate user access:

- User profile
- Group profile(s)
- *PUBLIC profile
 - *PUBLIC profile is the set of default policy settings shipped with Access for Web
 - The defaults allow most functions to be available to all users



A quick strategy when rolling out Access for Web on your system:

- Use the Customize Group Profiles function and customize the *PUBLIC group profile to 'Deny' functions for all users in a single step
 - ▶ You need *SECADM authority to customize profiles
 - ▶ Note: you should add an Administration Group or a specific User Profile for yourself first so that you don't lock yourself out of specific functions as you change the *PUBLIC profile
- You can then 'Allow' specific users access to functions via their User or Group profiles

Notes: Understanding which Policy Settings are enforced

iSeries Access for Web enforces policy settings for a user in the following order:

- If the policy setting is specific to the user profile, it is enforced.
- If the policy setting is not specific to the user profile, group profile memberships are checked. If the policy has been set for any of the user's group profiles, it is enforced.
- If the policy setting is not specific to any of the user's group profiles, a special group, *PUBLIC is checked. If the policy has been set in the *PUBLIC group profile, it is enforced. Note: All users are members of this group and cannot be removed.
- If the policy setting is not specific to the user profile, or any group profiles (including the *PUBLIC group), the shipped default policy setting is enforced.

The Customize function allows administrators to set policies for users and groups of users.

These policies control:

- Functions a user can perform
- How certain information is presented to the user.

When a function is restricted, its navigation bar content is removed. Access to the servlet is restricted, and it takes affect immediately.

Administrators with *SECADM special authority are automatically authorized to administer settings for users and groups of users that they have authority to. These administrators can then grant other user profiles permission to administrate iSeries Access for Web functions.

Customize - for all users at once

*PUBLIC is default user group shipped by Access for Web.

- Any setting you put in here will apply to all Access for Web users
- Make sure you set up your User/Group profile first!

Policies - Group Profiles

Profile filter: [Filter List](#)

Filter by: ☒ Profile ☐ Description

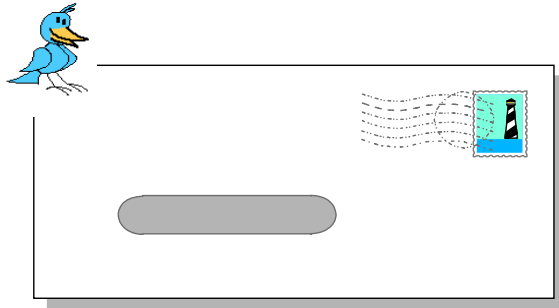
Navigation: [1] < > << >>

Profile	Description	Action
*PUBLIC	Default policy settings for all users	Edit View Members
#GROUP1	Test group profile	Edit View Members
GROUPA	JUAN PABLO HURADO GDL IWA TEST 877-2852	Edit View Members
GROUP1	CUSTOMIZE TEST RER USER1,USER2,USER3	Edit View Members
GRUPO		Edit View Members
QDESUSR	DB2 TEXT EXTENDER USER	Edit View Members
WALABUSER	Group Profile for iSeries Access for Web lab	Edit View Members
WA01GROUP	Group Profile for iSeries Access for Web lab	Edit View Members
WA02GROUP	Group Profile for iSeries Access for Web lab	Edit View Members
WA03GROUP	Group Profile for iSeries Access for Web lab	Edit View Members
WA04GROUP	Group Profile for iSeries Access for Web lab	Edit View Members
WA05GROUP	Group Profile for iSeries Access for Web lab	Edit View Members
WA06GROUP	Group Profile for iSeries Access for Web lab	Edit View Members
WA07GROUP	Group Profile for iSeries Access for Web lab	Edit View Members
WA08GROUP	Group Profile for iSeries Access for Web lab	Edit View Members
WA09GROUP	Group Profile for iSeries Access for Web lab	Edit View Members

Related Links:

- [iSeries Access for Web](#)
- [iSeries Access](#)
- [iSeries Navigator](#)
- [WebSphere Host Publisher](#)
- [iSeries Information Center](#)
- [iSeries Resource Library](#)

'Mail' option for output



e-Mail - V5R2

Ability to 'e-mail' results as attachment

- **Can send results to a recipient with status sent to sender for:**
 - A database (SQL) action
 - CL command
 - File command
 - PDF view of print information
- **A one-step way to distribute information across the network, and particularly useful when recipient is:**
 - Not an iSeries user
 - Does not have access to a web browser

Set up my session for e-mail capability...

IBM eServer iSeries

IBM

cmminer RCHAS1DD RCHLA

My Folder

My Home Page

Print

Messages

Jobs

5250

Database

Files

Command

Customize

Preferences

User profiles

Group profiles

Selected profile

Other

Related Links:

iSeries Access for Web

Customize - Mail

Profile: CMINER

Policy	Derived From	Action	Setting
Send mail	Shipped default	Use current setting	Allow
SMTP mail server 1	Profile setting	Use current setting	us.ibm.com
E-mail address 2	Profile setting	Use current setting	cminer@us.ibm.com
E-mail address is user preference	Shipped default	Use current setting	Allow

OK Cancel

1. To set up SMTP server setting:

- Use *PUBLIC to set up same address for all users
- If blank, Access for Web will use information in SDD

2. e-Mail address must be set for each user

Notes: e-mail information

Attaching information to an e-mail

New 'Mail' Support

V5R2 iSeries Access for Web allows you to e-mail database query results, printer output PDF's, command completion notifications, and other files to anyone with an e-mail address. The mail function is available from several places in iSeries Access for Web, including Database, Files, and Commands -- so you can attach the results from an SQL request or mail a file located in the integrated file system. You can also send e-mail notifications to users when items are saved in Personal Folders. This provides a one-step way to distribute information across the network, and will be particularly useful when recipients are not iSeries users.

You could tell iSeries Access for Web that you want to attach your PDF output to an e-mail instead of showing it in your browser. You can also have the PDF sent to your browser, or my folder, or as an e-mail attachment. After selecting the e-mail option, the PDF can be put in a note as an attachment. Now put in an e-mail address, add a message, and send the note along with the PDF attachment.

In order for anyone to use the e-mail option there must be an SMTP mail server somewhere in your network that the iSeries can access, and this address has to be defined to Access for Web. An iSeries administrator can quickly set up the SMTP mail server address for all Access for Web users by clicking on the 'Customize' function, then selecting Group Profiles, and then selecting 'Edit' on the *PUBLIC group profile. Alternatively, since many iSeries customers use the OS/400 System Distribution Directory (SDD) to keep user information and it already has configured e-mail addresses in there, Access for Web will get e-mail addresses from the SDD if the email address is blank.

In order for specific users to use the Mail function their e-mail address must be configured in their user profile. Your administrator could configure this for each user, or he could allow users to configure their own e-mail addresses in the 'Mail Preferences' portion of the Customize tab on the iSeries Access for Web navigation bar.

Select Mail Option for Printer Output (PDF)...

iSeries Access for Web
cminer LP016AB.RCHLAND.IBM.COM

PDF Printer Output

Navigation: [1]

File Name	File Number	User	Creation Date/Time	Job Name	Job Number	Action
QPDSPAJB	2	WPAUSER	10/23/03	QPRTJOB	008169	View Copy to file Copy to folder Delete Mail
QPJOBLOG	1	SCHMIEB	11/21/03	QPRTJOB	028903	View Copy to file Copy to folder Delete Mail

Navigation: [1]

Mail output

Address your e-mail...see PDF attachment there...

iSeries Access for Web
cminer RCHAS1DD.RCHLAND.IBM.COM

Mail as Attachment Settings

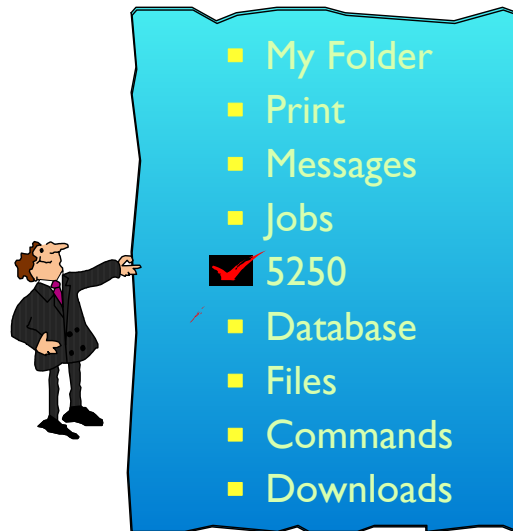
From: cminer@us.ibm.com
To: smshao@us.ibm.com
cc:
bcc:
Subject: Today's Job Log

Here's the information you requested.

Attachment: QPJOBLOG.244790.CMINER.QDFTJOB.D.1.PDF

OK Cancel

5250 Emulation



This is the only function in the iSeries Access for Web product that requires **'interactive'**.

All other functions run as 'batch' tasks on the iSeries



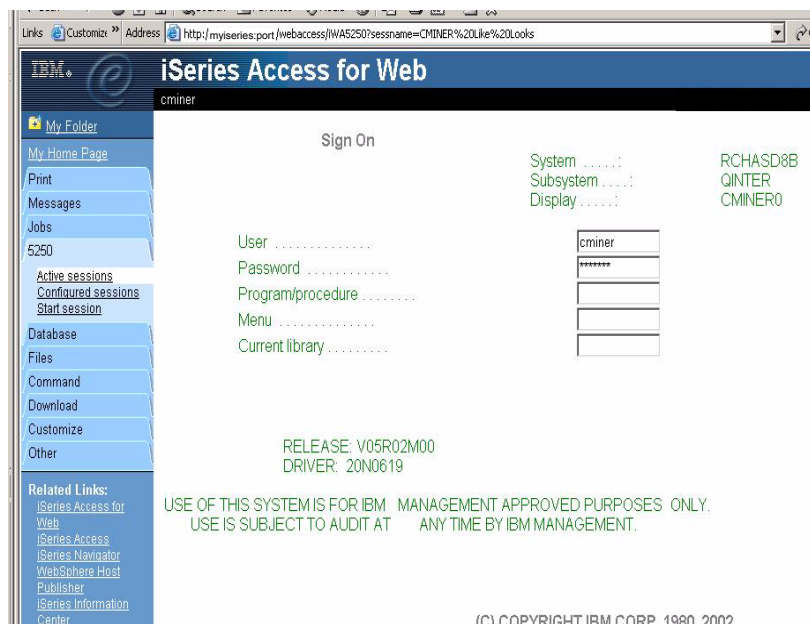
<http://myiseries:port/webaccess/iWA5250>

Page up, page down, and function keys supported on:

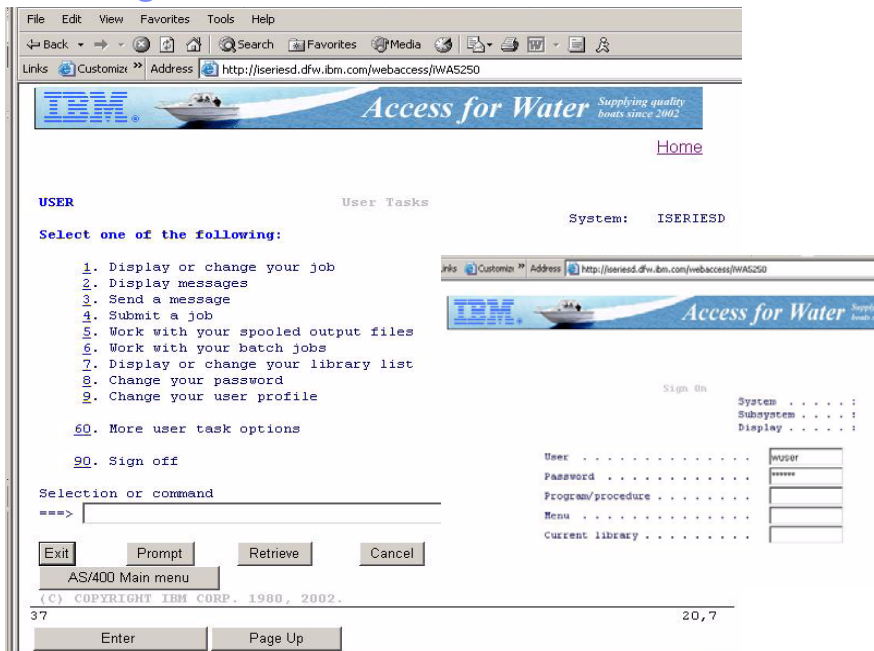
- Microsoft Internet Explorer (version 5.0 and later)
- Netscape (version 6.0 and later)
- Mozilla

Assign unique device ID

Screen auto-switches to 132 columns as needed



Working with OS/400 screens via 5250 emulation



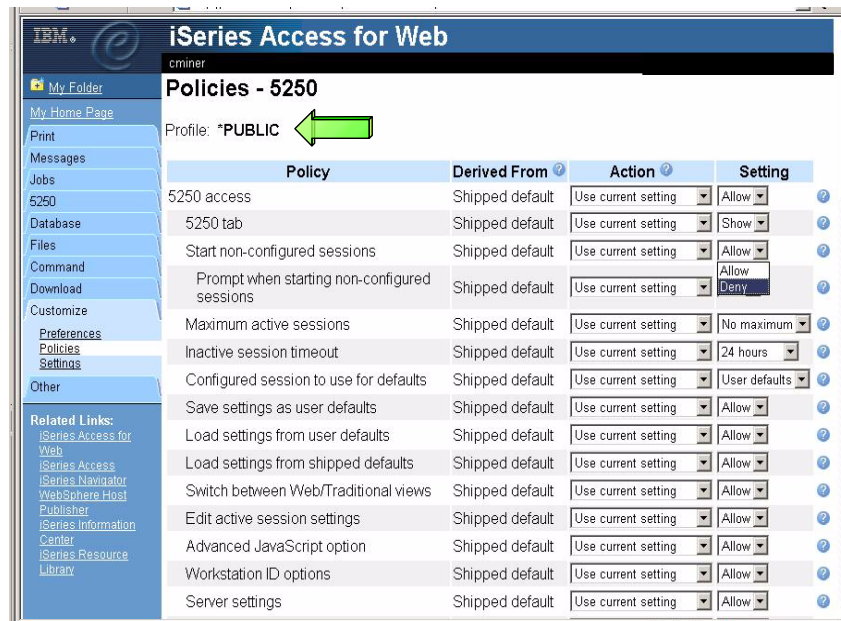
- ▶ Use your company logos
- ▶ Keypads
 - ▶ Can define, put anywhere on screen...
- ▶ Macros
 - Contains a series of cursor position commands and user input
- ▶ Cursor positioning
 - Ability to place cursor at non-input fields for cursor sensitive applications

Even your OS/400 screens look better!

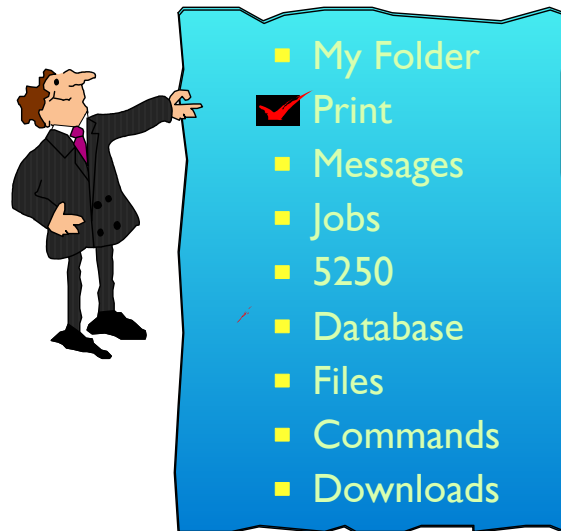
Setup 5250 for all users...

Set up 5250 sessions for specific users, groups of users, all users

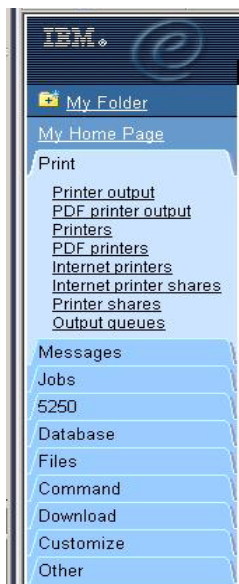
Full control of what users can access or do in 5250



Print



Basic Printer tasks an End User might want to do...



Printer Output

PDF Printer Output



Typical users

Printers

PDF Printers

Internet Printers

Internet Printer Shares

Printer Shares

Output Queues

Printer Output

<http://myiseries:port/webaccess/iWASpool>

My 'printer output'

- Can view it in my browser
- Or select 'Work with' for more options

iSeries Access for Web
cminer

Printer Output for cminer

File Name	User Data	Creation Date/Time	Pages Per Copy	Copies	Status	Action	User	Job
QPJOBLOG	QZDASOINIT	10/17/03 1:32 PM	2	1	Ready	Work with View View as View PDF	CMINER	QPR1
QPJOBLOG	QZDASOINIT	11/5/03 1:40 PM	1	1	Ready	Work with View View as View PDF	CMINER	QPR1
QPJOBLOG	QZDASOINIT	11/5/03 1:40 PM	1	1	Ready	Work with View View as View PDF	CMINER	QPR1
QPJOBLOG	QZDASOINIT	11/5/03 1:42 PM	1	1	Ready	Work with View View as View PDF	CMINER	QPR1

Notes: Printer output actions

The list of spooled files owned by the current user can be displayed. From the list, SCS and AFP output can be viewed in PNG, TIFF, PCL and AFP formats. ASCII output can be downloaded to the browser. PDF documents can be created with spooled file contents. These documents can be viewed in the browser, placed in a personal folder, or sent to someone as an e-mail attachment. Options are also provided to perform the following actions on printer output: hold, delete, print next, move to another printer, move to another output queue, send to another server, change attributes, and copy to a database file.

View

- Use the View action to view the printer output.

View As

- Use the View As action to preview the SCS and AFP printer output in PNG, TIFF, PCL or AFP formats.

View PDF

- Use the View PDF action to view, mail, or send printer output in PDF format.

Infoprint Server for iSeries - 5722-IP1

Go beyond 'print and distribute.' Go to the next level of automation to manage and present business information electronically.

- Receive more value from your IBM iSeries investment. Extend core iSeries output capabilities that help enable you to reengineer business processes to improve service levels, decrease transaction costs, reduce paper flow and enhance competitive advantage with speed and flexibility.

With Infoprint® Server, you can transform any standard iSeries output format and produce electronic output in Advanced Function Presentation (AFP™) or PDF.

- This capability allows you to manage and distribute information via e-mail, Web or local printing.
- And, you gain iSeries management of network output.

Infoprint Server provides transforms for PCL, PostScript®, GIF, TIFF, JPEG and PDF data into AFP

- So you can bring these documents into the iSeries for efficient and cost-effective handling.

http://www.printers.ibm.com/internet/wwwsites.nsf/vwwwebpublished/ipserverhome_i_ww



Complimentary trial

Activate your 70-day evaluation of Infoprint Server for iSeries today. Unlock the trial from the OS/400® Version 5 release set of CDs. Learn more

Notes: Infoprint Server for iSeries (5722-IP1)

Will use this product for PDF conversions if installed. But not required.

- Converts any standard iSeries output file to PDF
- Provides automatic e-mail of any iSeries output file using PDF
- PDF files can be routed to iSeries output queues for printing on PDF-capable printers
- PDF files can also be routed to the iSeries integrated file system for "downstream" electronic access
- Provide ability to segment an iSeries output file by logical group and create individual PDF files for each segment
- Provide a user exit to facilitate customization and ID lookup for the e-mail process
- Provide real text, high-fidelity PDF output, enabling search, navigation, and superior performance through the output
- Transform PCL print files into AFP
- Transform PostScript Level 3™ print files into AFP
- Transform PDF print files into AFP
- Convert applications formatted using iSeries page definitions to AFP (Note that Infoprint Designer for iSeries uses page definitions for page formatting)
- Convert standard AFP print files to fully encapsulated AFP files, meaning externally referenced resources such as fonts, page segments, and overlays are built in
- Index AFP print files for use with Web browsers and archival
- Convert standard Internet image file formats — GIF, TIFF, and JPEG — to iSeries (AFP) image format

Printer Output - converting to PDF options...

Convert to PDF Options

- View in my browser, can then print to any printer I can reach
- Mail as attachment
- Personal Folder
- Output Queue

iSeries Access for Web
cminer RCHASDBB.RCHLAND.IBM.COM

PDF Output Settings

Destination:

Destination Details

Specifies the destination of the newly created PDF document. The PDF document can be sent to the following options:

Browser

Based on the browser's settings, the document will either be displayed by a plug-in, or a file save dialog will be presented.

Selected 'Browser' option

- Spooled output converted to PDF
- View in browser

PDF Output Settings

Destination:

Access for Water

To: Joe Customer
1234 Beach Street
Hometown, CA 12345

Date: Thursday, June 13, 2002
Invoice No. 9876543
Payment Due: Monday, July 15, 2002

Description	Part No.	Quantity	Price	Amount
Hunter 33.5	004356	1	\$57,900.00	\$57,900.00
Boat trailer	199234	1	\$1,800.00	\$1,800.00
Boat anchor	043993	1	FREE	\$0.00
Subtotal				\$59,700.00
Tax				7.00%
TOTAL				\$63,879.00

IBM eServer iSeries
IBM

Selected 'Mail' Option

- eMail your converted PDF output
- Your mail server can be anywhere in your network
- Users receiving your email need only their mailbox

PDF Output Settings

Destination: Browser Settings
Advanced: Mail as attachment →
Personal folder
Output Queue

© 2003 IBM Corporation

IBM eServer iSeries
IBM

Put PDF output in Personal Folders...

- Selected 'Personal Folder' option
- Picked whose folders to put in
- Notified when output was delivered

PDF Output Settings

Destination: Browser Settings
Advanced: Mail as attachment →
Personal folder →
Output Queue

© 2003 IBM Corporation

Converted and sent to my PDF Printer Output Queue

PDF Output Settings

Destination:

Advanced:

Mail as attachment
Personal folder
Output Queue

iSeries Access for Web

cmminer

PDF Output Queue Settings

Output Queue:

Library:

Convert Printer Output to PDF [RCHASDB8.RCHLAND.IBM.COM] - Microsoft Internet Explorer

File Edit View Favorites Tools Help

Back Forward Stop Reload Search Favorites Media Print

Links Customiz Address http://rchasdb8:2024/webaccess/IWAPDFDownload/QPJOBLOG.pdf Go

iSeries Access for Web

cmminer RCHASDB8.RCHLAND.

Convert Printer Output to PDF

The PDF file was successfully created in output queue: QUSRWA2/CAMINER

Printer Output - Work With option

iSeries Access for Web

cmminer

Printer Output for cmminer

Printer output
PDF printer output
Printers
PDF printers
Internet printers
Internet printer shares
Printer shares
Output queues

File Name	User Data	Creation Date/Time	Pages Per Copy	Copies	Status	Action	User	Job Name	Job Number
QPJOBLOG	QZDASOINIT	11/7/03 6:04 PM	1	1	Ready	Work with View	CMINER	QPRTJOB	199
QPJOBLOG	QZDASOINIT	11/7/03 3:10 PM	1	1	Held	Work with View	CMINER	QPRTJOB	199

Action Details

The Printer Output function supports the following actions:

- Work With**
Use the Work With action to hold, release or print the specified spooled file next. There are also links spooled file:
 - Move printer output to another printer
 - Move printer output to another output queue
 - Send printer output to another server (SNDTCPSPLF)

Related Links:

- [iSeries Access for Web](#)
- [iSeries Access](#)
- [iSeries Navigator](#)
- [WebSphere Host Publisher](#)
- [iSeries Information Center](#)

Notes: Printer output 'Work With' actions

Work With - use the Work With action to hold, release or print the specified spooled file next. There are also links available that will allow you to perform the following actions on the spooled file:

- Move printer output to another printer
- Move printer output to another output queue
- Send printer output to another server (SNDTCPSPLF)
 - The Send TCP/IP Spooled File (SNDTCPSPLF) command sends a spooled file to be printed on a remote system. The remote system must be running TCP/IP. The SNDTCPSPLF command is the iSeries version of the TCP/IP LPR (Line Printer Requester) command.
- Change printer output attributes (CHGSPLFA)
 - The Change Spooled File Attributes (CHGSPLFA) command changes the attributes of a spooled file while it is on an output queue. The changes affect only the current processing of the file. The next time the job runs and the file is produced, the file attributes are derived from the device file description, the program, and any override commands.
 - If the file is currently being produced on an output device, the only parameters that can be changed are COPIES, RESTART, and SAVE. An attempt to change any other parameter results in an error, and no file attributes are changed. However, if the file is being held on an output queue because of spooling attribute errors, this command can be used to change the attributes, and a spooling writer can then be started to produce the file.
- Copy printer output to database file (CPYSPLF)
 - The Copy Spooled File (CPYSPLF) command copies the data records in the specified spooled file to a user-defined physical data-base file. This conversion allows the use of spooled files in applications using microfiche, data communications, or data processing. Print lines that are all blank are not copied.
 - When you copy a spooled file to a physical file, certain information is lost or changed, including:
 - Graphics data is lost.
 - Bar code data is lost.
 - Data defined by using the DFNCHR or TRNSPY keywords is replaced with blanks.
 - Translation for CHRID and TRNTBL is not performed. (CHRID and TRNTBL are specified through DDS and printer device file parameters.)

Move from Spool File to PDF Print Queue

IBM Infoprint Server (5722-IP1) to use PDF functions:

- **Can quickly move AFP / SCS output to:**
 - PDF Printer output
 - PDF Printer
- **Don't have to wait for PDF conversion to complete**

IBM iSeries Access for Web
cminer

Work With Printer Output

File name: QPJOBLOG
File number: 4
Job name: QPRTJOB
Job number: 199547
User: CMINER
Created system: RCHASD8B
Created date/time: 11/5/03 1:42 PM

Hold Print Next Delete

Action

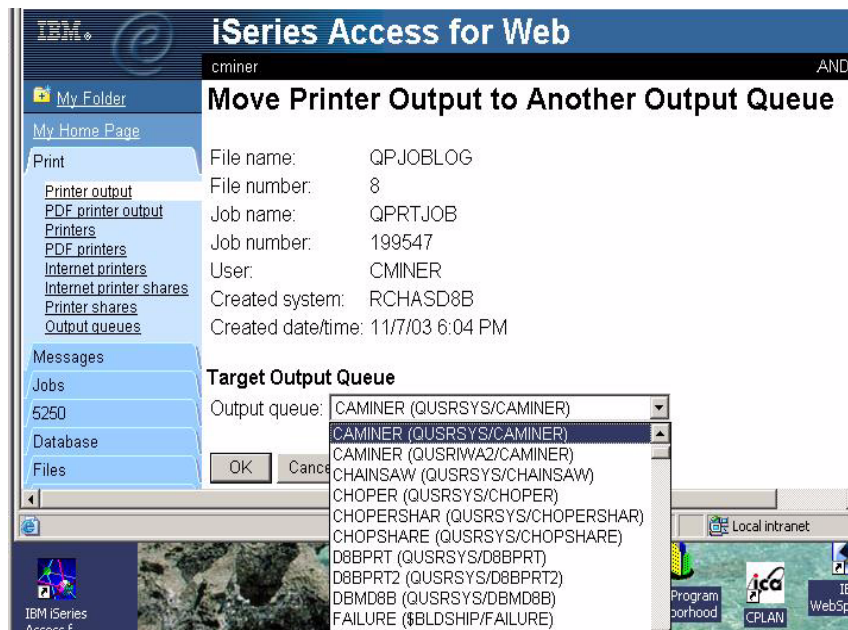
- [Move printer output to another printer](#)
- [Move printer output to another output queue](#)
- [Send printer output to another server \(SNDTCPSPLF\)](#)
- [Change printer output attributes \(CHGSPLFA\)](#)
- [Copy printer output to database file \(CPYSPLF\)](#)

Note: Do not need Infoprint Server to perform last 3 tasks (ie, SNDTCPSPLF, CHGSPLFA, CPYSPLF)

Move Printer Output to Another Queue and Convert to PDF

Can move to any Output Queue on system

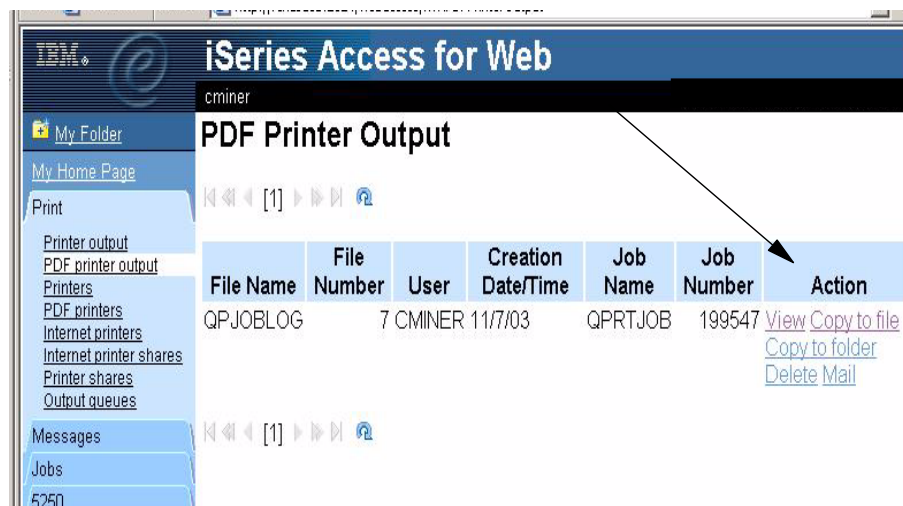
- Output Queue or Printer must have previously been set up
- Conversion to PDF done on-the-fly



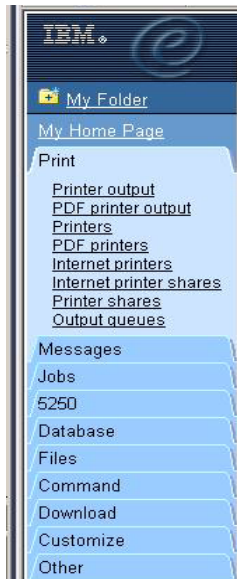
My PDF Printer Output Queue

<http://myiseries:port/webaccess/iWAPDFPrinterOutput>

- Spooled output converted to PDF
- Now also is in my PDF Printer Output queue
 - Can now view
 - Copy to folders
 - Mail
 - Delete

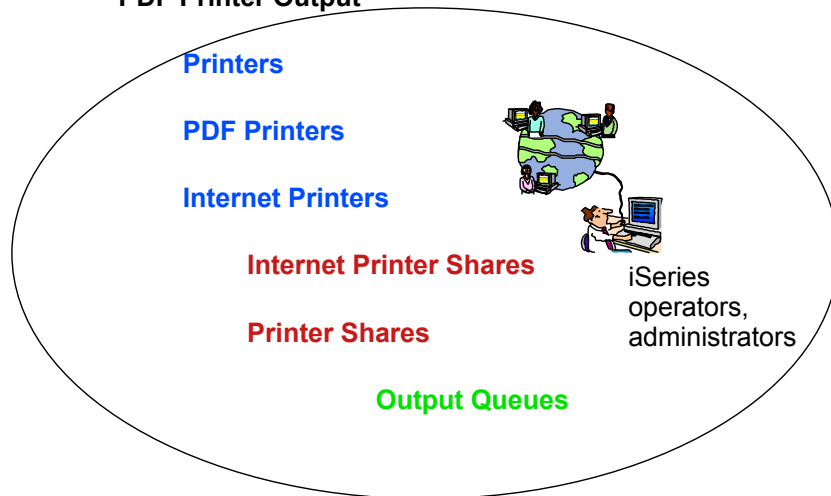


Print tasks geared toward operators, administrators, etc...



Printer Output

PDF Printer Output



Working with 'Printers'

<http://myiseries:port/webaccess/iWAPrinters>

Printers

- You are seeing all 'Printers' on iSeries
- Can go to Output Queue for each specific printer

iSeries Access for Web					
cminer					
Printers					
[1] 2 3 [Navigation icons]					
Printer	Status	Action	Description	Output Queue	
ANA	Unavailable	Make Available Start	DEVICE CREATED FOR RCHASD8B.	QUSRSYS/ANA	
CAMINER	Ready	Stop Hold	My PDF Printer	QUSRSYS/CAMINER	
CHAINSAW	Unavailable	Make Available Start	DEVICE CREATED FOR RCHASD8B.	QUSRSYS/CHAINSAW	
CHOPERSHAR	Unavailable	Make Available Start	DEVICE CREATED FOR RCHASD8B.	QUSRSYS/CHOPERSHAR	
CHOPSHARE	Unavailable	Make Available Start	DEVICE CREATED FOR RCHASD8B.	QUSRSYS/CHOPSHARE	
DBMD8B	Unavailable	Make Available Start	DEVICE CREATED FOR RCHASD8B.	QUSRSYS/DBMD8B	
D8BPRT	Unavailable	Make Available Start	DEVICE CREATED FOR RCHASD8B.	QUSRSYS/D8BPRT	
D8BPRT2	Unavailable	Make Available Start	DEVICE CREATED FOR RCHASD8B.	QUSRSYS/D8BPRT2	
HATSPRT	Unavailable	Make Available Start	DEVICE CREATED FOR RCHASD8B.	QUSRSYS/HATSPRT	

PDF Printers

<http://myiseries:port/webaccess/iWAPDFPrinters>

Printers

- You are seeing all 'PDF Printers' on iSeries

- Can go to Output Queue for each specific printer

iSeries Access for Web
cminer

PDF Printers

PDF Printer	Status	Action	Description
CAMINER	Ready	Work with settings Stop Delete Change Override	My PDF Printer
TRAVISTEST	Unavailable	Work with settings Start Delete Change Override	test

[Create new PDF printer](#)
Allows you to create a new PDF printer.

PDF Printer
A PDF printer automatically transforms queued SCS or AFP printer output into PDF documents.

Action Details
The PDF Printers function supports the following actions:

Notes: PDF Printer

A PDF printer automatically transforms queued SCS or AFP printer output into PDF documents. The PDF Printers function supports the following actions:

- **Work With** = Users with *SPLCTL special authority can use the Work with action to control printer function for the specified PDF printer. The actions that will be available are dependent on the status of the printer.
- **Start/Stop** = Use the Start or Stop options to start creating PDF printer output or stop creating PDF printer output from the specified PDF printer. The action available is dependent on the status of the printer.
- **Delete** = Use the Delete action to remove the PDF Printer.
- **Change** = Use the Change action to change the current configuration for the specified PDF Printer. Only the owner of the PDF printer or a user with *ALLOBJ special authority can change the configuration of a PDF printer.
- **Override Settings** = Use the Override Settings action to change the current configuration for the specified PDF printer. The new configuration values for the printer will be based off of the values found in the specified PSF configuration object. Only the owner of the PDF printer or a user with *ALLOBJ special authority can change the configuration of a PDF printer.
- **Change Authority** = Use the Change Authority action to change the owner of the PDF printer, or to allow other users to access the PDF printer. Only the owner of the printer can use this option.

PDF Printers

IBM Infoprint Server is required if you want to use the new PDF Printers function.

PDF Transformations of Printer Output

iSeries Access for Web has two PDF transformation possibilities, IBM Infoprint Server (5722-IP1) or a TIFF transform. IBM Infoprint Server is a separately purchasable product that gives iSeries Access for Web users the ability to create full text PDF files that deliver document fidelity, while preserving the ability to navigate through the document. If you have IBM Infoprint Server installed, iSeries Access for Web automatically detects and uses it. If you do not have IBM Infoprint Server installed, the individual pages of the spooled file will be converted into images. These images become the pages of the PDF document. You cannot edit or search for content in any of these pages.

Notes: IBM Infoprint Server may make changes to the order of the spooled files in the current user's list. It may also make changes to the creation date and time and the start and complete date and time. The spooled file must be in either the HELD, READY, or SAVED state to be printed by IBM Infoprint Server.

Create your uniquely defined PDF Printer

**Must
create a
PDF
Printer
before you
can move
printer
output to a
PDF**

Create PDF Printer

Name:

Description:

Settings

Device type to emulate:

Drawer 1 paper size:

Drawer 2 paper size:

Name Details

Specifies the name of the PDF printer to be created. The name is limited to 10 characters. The name must be unique (it must not match other printer names that exist on the server).

[Top of page](#)

Description Details

Notes: What is a PDF Printer

In order for a printer to be capable of printing PDF (without the aid of a browser) the printer must support the Adobe® PostScript® 3™ standard. See <http://www.adobe.com/products/postscript/main.html>.

Here is an excerpt: "The industry-standard printing and imaging technology Adobe® PostScript® 3™ is the worldwide printing and imaging standard. Used by publishers, corporations, and government agencies around the globe, PostScript 3 gives you the power to create and print visually rich documents with total precision. The PostScript 3 printing technology is licensed to printing equipment manufacturers for integration into their printing environments. As a scalable printing architecture, it can be easily integrated into a wide range of devices and technologies while maintaining the high quality and performance you expect from Adobe. If you have a printing device equipped with Adobe PostScript, there are no limits on your use of color, text, graphics, and images. Adobe PostScript translates your great ideas into print — exactly as you intended."

Here is some info on IBM Printers.

IBM Printing Systems specializes in output solutions for e-business. A leader in production print, print-on-demand technologies, one-to-one marketing initiatives and print management software, the company's offerings include printers, software, consultation, systems integration, supplies, service and support.

IBM workgroup printers

Implement true Adobe PostScript technology as a page description language (PDL). Through the use of Adobe PostScript 3™, in its latest printers, users benefit from increased print speed and superior print quality for both simple office documents as well as visually rich documents.

IBM's Infoprint Manager

A comprehensive solution for managing digital printing that address the requirements of a variety print markets—includes support for Adobe Extreme®. When printing on an IBM high-speed printing system, Adobe Extreme processes each page of a Adobe Postscript document individually in parallel, making it possible to RIP pages fast enough to maintain the rated speed of the printer.

Internet Printers

<http://myiseries:port/webaccess/iWAIPPPrinters>

Printer	Status	Action	URL
IPP01	Ready	Work with	http://rchasd8b:631/ipp/printers/ipp02
IPP02	Stopped	Work with	http://rchasd8b:631/ipp/printers/ipp03
IPP03	Ready	Work with	http://rchasd8b:631/ipp/printers/ipp04
IPP04	Ready	Work with	http://rchasd8b:631/ipp/printers/ipp05
IPP05	Ready	Work with	http://rchasd8b:631/ipp/printers/ipp06
IPP06	Ready	Work with	http://rchasd8b:631/ipp/printers/ipp07
IPP07	Ready	Work with	http://rchasd8b:631/ipp/printers/ipp08
IPP08	Ready	Work with	http://rchasd8b:631/ipp/printers/ipp01
P4324	Held	Work with	9.18.34.151 INTERNET PRINTER (GDL TESTING)

All Internet Printers on the System

- Via 'Work With' actions, you can:
 - Stop printer
 - Hold printer
 - Go to output queue for each specific Internet Printer

Notes: Use Internet Printers for Printer Emulation

Situation:

You and 20 other workers are at a remote location. You run iSeries applications from the local/main site -- but you want the output to print at your remote site.

Solution:

Use Internet Printers. The iSeries has an IPP server and an IPP client. The IPP client is an iSeries print driver which is configured in an iSeries printer device description which has an associated iSeries output queue. Once a printer device description has been configured to use IPP, it will show up on the Access for Web 'Internet Printer' list

Special Request:

Sometimes I want to view the printer output before it prints. I expect it is fairly straight-forward to set up my application so that it goes to my Internet Printer and prints. Maybe it is the payroll and I want to check it before I print all the checks. How would I get it to a spoolfile where I can view it, then move it to the Internet Printer where it can print?

How can iSeries Access for Web help me?

- You would have previously set up a device description for an Internet Printer and direct your printer output to that printer.
- Using Access for Web, set the printer to 'Hold' and not print.
- Now you can go into the Access for Web 'Internet Printers' tab, and click on the specific Internet Printer that you are directing your payroll job to. Click on it and you will get to the output queue for that job.
- View your Printer Output using the Access for Web PDF view.
- If it all looks well, you can then go back to the Access for Web 'Internet Printer' tab and 'Start' that Internet Printer and let it print.
- You could also mail it or stick it in your folder via Access for Web.

Printer Shares

<http://myiseries:port/webaccess/iWAPrinterShares>

Printer 'shares' are set up using iSeries Navigator

- All printers defined as shared printers will show up in here.
- If user also has adequate 'object level authority' they could work with printers and printer output from here

iSeries Access for Web					
cminer					
Printer Shares					
[1]					
Share	Output Queue	Printer Driver	Spooled File Data Type	Users	
CAMINERSPDF	QUSRSYS/CAMINER		Auto-select	0 My	
CHAINSAW	QUSRSYS/CHAINSAW		Auto-select	0 Tra	
CHOPER	QUSRSYS/CHOPER		Auto-select	0 DE CR	
IPP02	QUSRSYS/IPP02		Auto-select	0 2	
IPP03	QUSRSYS/IPP03		Auto-select	0 thre	
IPP04	QUSRSYS/IPP04		Auto-select	0 ipp	
IWAPRT	QUSRSYS/IWAPRT		Auto-select	0	
PRTD8B5SHARE	QUSRSYS/PRTD8B5		Auto-select	0 DE CR	
RENATASHARE	QUSRSYS/RENATA		Auto-select	0 Rel Tie Gu: Testing	
RODKEMU	QUSRSYS/RODKEMU		Auto-select	0 DEVICE CREATED FOR	
SHARED8B	QUSRSYS/SHARED8B		Auto-select	0 DEVICE CREATED FOR	

Internet Printer Shares

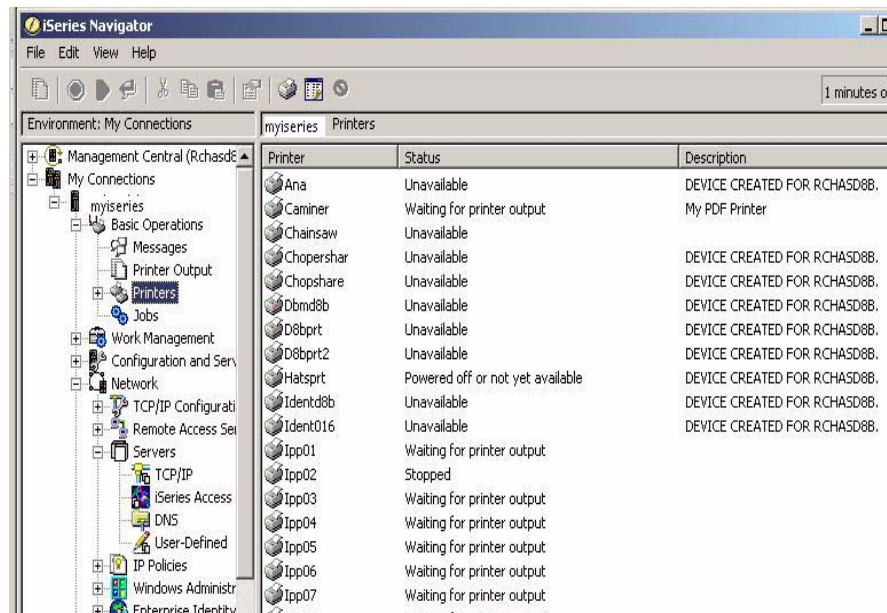
<http://myiseries:port/webaccess/iWAIPPShares>

Internet Printer Shares				
[1] 2				
Share	Output Queue	URL	Printer D	
IWAAFP	QUSRSYS/IWAAFP	http://RCHASD8B:631/ipp/printers/IWAAFP	Auto-selec	
warrena	QUSRSYS/IPP	http://RCHASD8B:631/ipp/printers/warrena	Auto-selec	
USERWITHTA	QUSRSYS/USERWITHTA	http://RCHASD8B:631/ipp/printers/USERWITHTA	Auto-selec	
ipp05	QUSRSYS/IPP05	http://RCHASD8B:631/ipp/printers/ipp05	Auto-selec	
RENATA	QUSRSYS/RENATA	http://RCHASD8B:631/ipp/printers/RENATA	Auto-selec	
JPVALDEZ	QUSRSYS/JPVALDEZ	http://RCHASD8B:631/ipp/printers/JPVALDEZ	Auto-selec	
IDENTD8B-INTERPT	QUSRSYS/IDENTD8B-INTERPT	http://RCHASD8B:631/ipp/printers/IDENTD8B-INTERPT	Auto-selec	
JEFFPRT1	QUSRSYS/JEFFPRT1	http://RCHASD8B:631/ipp/printers/JEFFPRT1	Auto-selec	
ipPRINTD8B	QUSRSYS/PRINTD8B	http://RCHASD8B:631/ipp/printers/ipPRINTD8B	SNA Char	
ipp04	QUSRSYS/IPP04	http://RCHASD8B:631/ipp/printers/ipp04	Auto-selec	
HATSPRT	QUSRSYS/HATSPRT	http://RCHASD8B:631/ipp/printers/HATSPRT	Auto-selec	
ipp03	QUSRSYS/IPP03	http://RCHASD8B:631/ipp/printers/ipp03	Auto-selec	
RENIPRINT	QUSRSYS/RENIPRINT	http://RCHASD8B:631/ipp/printers/RENIPRINT	Auto-selec	

NetServer Print Shares

Use iSeries Navigator to set up Printer Shares

- Basic Operations
- Printers
- Right-click on Printer to set up...



Printers - Output Queues

<http://myiseries:port/webaccess/iWAOutputQueues>

Output Queues

- Find appropriate output queue, click on it...
- Takes you to 'Printer Output' screen, where you can:
 - Work With
 - View
 - View PDF

Output Queue	Status	Action	Files	Write
QUSRSYS/PATY	Released	Hold		10
QUSRSYS/P/COMPUTERN	Released	Hold		0
QUSRSYS/PJPABLOA	Released	Hold		0
QUSRSYS/PPP	Released	Hold		10
QUSRSYS/PRINTD8B	Released	Hold		10
QUSRSYS/PRINTERD8B	Released	Hold		0
QUSRSYS/PRINTER2	Released	Hold		0
QUSRSYS/PRINTER8B	Released	Hold		0
QUSRSYS/PRINTJP	Released	Hold		0
QUSRSYS/PRJP	Released	Hold		0
QUSRSYS/PRTA1	Released	Hold		0
QUSRSYS/PRTCA01	Released	Hold		0
QUSRSYS/PRTCA02	Released	Hold		0
QUSRSYS/PRTCA03	Released	Hold		0
QUSRSYS/PRTD8B	Released	Hold		6

Set up 'Policies' for your users...

Through
'Policies'
define what
you want
your users
to see and
be able to
work with

IBM. iSeries Access for Web
cminer

Policies - Print
Profile: CMINER

Policy	Derived From	Action	Setting
Print access	Shipped default	Use current setting	Allow
Print tab	Shipped default	Use current setting	Show
Printer output	Shipped default	Use current setting	Allow
View printer output	Shipped default	Use current setting	Allow
Preferred format to preview AFP output	Shipped default	Use current setting	Deny
Preferred format to preview SCS output	Shipped default	Use current setting	PNG
View printer output as selected format	Shipped default	Use current setting	Allow
Hold/release printer output	Shipped default	Use current setting	Allow
Print next	Shipped default	Use current setting	Allow
Delete printer output	Shipped default	Use current setting	Allow
Move printer output	Shipped default	Use current setting	Allow
Send printer output to another server	Shipped default	Use current setting	Allow
Change printer output	Shipped default	Use current setting	Allow

Related Links:
[iSeries Access for Web](#)
[iSeries Access](#)
[iSeries Navigator](#)
[WebSphere Host Publisher](#)
[iSeries Information Center](#)
[iSeries Resource Library](#)

Policies - Columns - Printer Output

Deselect
Columns
you don't
want to
show on
user's
'Printer
Output'
screens

IBM. iSeries Access for Web
cminer

Columns - Printer Output
Profile: CMINER

Select which columns to display.

Column
<input checked="" type="checkbox"/> File Name
<input type="checkbox"/> User Data
<input checked="" type="checkbox"/> Creation Date/Time
<input checked="" type="checkbox"/> Pages Per Copy
<input checked="" type="checkbox"/> Copies
<input type="checkbox"/> Status
<input checked="" type="checkbox"/> Action
<input checked="" type="checkbox"/> User
<input checked="" type="checkbox"/> Job Name
<input type="checkbox"/> Job Number
<input type="checkbox"/> File Number
<input checked="" type="checkbox"/> Output Queue
<input type="checkbox"/> Priority
<input checked="" type="checkbox"/> Form Type
<input checked="" type="checkbox"/> Printer

To change the order in which columns are displayed, click Column Order.

[Column Order](#)

Printer Output - Column Order

Set up how
you want
columns to
be displayed
for users

iSeries Access for Web
cminer

Column Order - Printer Output

Profile: CMINER

To change the order in which columns are displayed, change the order values. Columns with smaller order values will be displayed before columns with larger order values.

Order	Column
10	File Name
95	Creation Date/Time
30	Pages Per Copy
40	Copies
50	Action
60	User
70	Job Name
20	Output Queue
90	Form Type
5	Printer

OK Cancel

Printer Output Look...

iSeries Access for Web
cminer

Printer Output for cminer

Before

File Name	User Data	Creation Date/Time	Pages Per Copy	Copies	Status	Action	User	Job Name	Job Number
QPJOBLOG	QZDASOINIT	11/7/03 6:04 PM	1	1	Ready	Work with View	CMINER	QPRTJOB	199
QPJOBLOG	QZDASOINIT	11/7/03 3:10 PM	1	1	Held	Work with View	CMINER	QPRTJOB	199

iSeries Access for Web
cminer

Printer Output for cminer

After

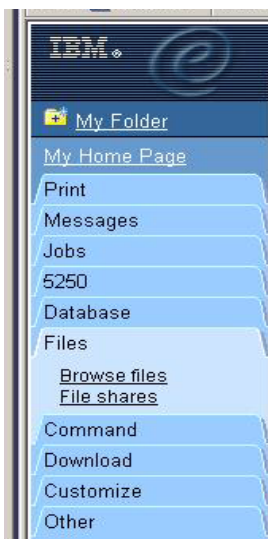
Printer	File Name	Output Queue	Pages Per Copy	Copies	Action	User	Job Name	Form Type	Creation Date/Time
CMINER	QPJOBLOG	QUSRIWA2/CAMINER	1	1	Work with View	CMINER	QPRTJOB	*STD	11/7/03 6:04 PM
CMINER	QPJOBLOG	QUSRSYS/CAMINER	1	1	Work with View	CMINER	QPRTJOB	*STD	11/7/03 3:10 PM

Can also set similar policies for PDF Printer Output

Integrated File System (IFS)



Access Files on Your iSeries Server



Upload and download files via:

- **Integrated File System (IFS)**
 - **Navigate and browse the directories located on your iSeries server IFS**
 - Using File Manager like interface
- **iSeries NetServer**
 - **View a list of the iSeries NetServer file shares**
 - Using File Manager like interface

Browse Directories in IFS

Functions simplified:

- **Rename**
- **Delete**
- **Work with**
 - Edit authority
 - Change owner
 - Change primary group
 - Change authorization list
 - Zip



IBM. iSeries Access for Web

cminer

Directory Contents

[Copy Files to Server](#)
Copy files to the current directory.

[Create Directory](#)
Create a subdirectory in the current directory.

Found 35 directories. Found 0 files with a total size of 0 bytes.

Name	Size (bytes)	Type	Modified	Action
\$BLDSHIP		Directory	10/24/2003 04:49:20 PM	Rename Delete Work with
\$BLDTEST		Directory	10/24/2003 04:49:16 PM	Rename Delete Work with
ASFTomcat		Directory	10/22/2003 09:13:29 AM	Rename Delete Work with
bin		Directory	10/21/2003 06:24:28 PM	Rename Delete Work with
boats		Directory	10/23/2003 10:45:53 AM	Rename Delete Work with
cminer		Directory	11/12/2003 01:03:50 PM	Rename Delete Work with
csmith		Directory	10/31/2003 03:48:21 PM	Rename Delete Work with
dev		Directory	10/21/2003 06:24:20 PM	Rename Delete Work with
dlb		Directory	10/23/2003 01:57:36 PM	Rename Delete Work with
etc		Directory	10/21/2003 06:24:26 PM	Rename Delete Work with

Related Links:
[iSeries Access for Web](#)
[iSeries Navigator](#)
[WebSphere Host Publisher](#)
[iSeries Information Center](#)
[iSeries Resource Library](#)

Notes: IFS

Action Details

The Browse Files function supports the following actions:

Copy

- Use the Copy action to copy a file to another file or directory. The current directory path will be displayed so you can verify that you selected the correct file to copy.

Rename

- Use the Rename action to rename a file or directory. The current name will be displayed so you can verify that you selected the correct file or directory.

Delete

- Use the Delete action to delete a file or directory. The current directory path is displayed so you can verify you selected the correct file or directory to be deleted. Deleting a directory will delete all of the files in that directory and all of its subdirectories. This action cannot be undone.

Mail

- Use the Mail action to send a file to an e-mail address. The current directory path will be displayed so you can verify that you selected the correct file to mail.

Work With

- Use the Work With action to access links that will allow you to perform other actions on the file or directory.

Set Policy to Default to Specific Directory in IFS

Set policy to filter IFS to 'CMINER' folder...

Set a 'Default Directory' for:

- *PUBLIC
- Groups of users
- Specific user

Policies - Files

Profile: **CMINER**

Policy	Derived From	Action
Files access	Shipped default	Use current setting Allow
Files tab	Shipped default	Use current setting Show
Display directory contents in new window	Shipped default	Use current setting No
Enable sort links for directory contents	Shipped default	Use current setting Yes
Display directory contents statistics	Shipped default	Use current setting Yes
Browse files	Shipped default	Use current setting Allow
Copy files to server	Shipped default	Use current setting Allow
Copy files from server	Shipped default	Use current setting Allow
Default directory	Shipped default	Use current setting /cminer
Display subdirectory	Shipped default	Use current setting Allow

Filtered View of IFS...

When I click on 'Browse Files', I see only my 'cminer' directory and its content

Actions I can perform:

- **Subdirectories**
 - Create new ones
 - Rename
 - Work with
- **Files**
 - Copy
 - Rename
 - Delete
 - Mail
 - Work with

iSeries Access for Web

cminer

Directory Contents /cminer

[Copy Files to Server](#)
Copy files to the current directory.

[Create Directory](#)
Create a subdirectory in the current directory.

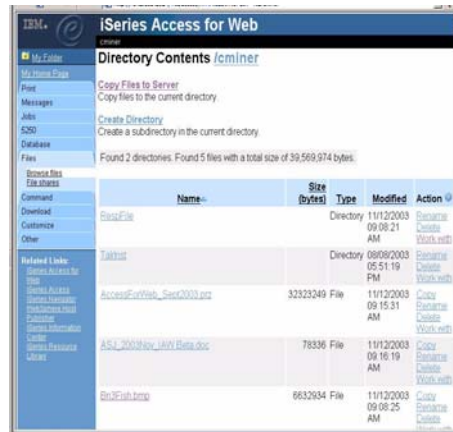
Found 2 directories. Found 5 files with a total size of 39,569,974 bytes.

Name	Size (bytes)	Type	Modified	Action
RespFile		Directory	11/12/2003 09:08:21 AM	Rename Delete Work with
TalrInst		Directory	08/08/2003 05:51:19 PM	Rename Delete Work with
AccessForWeb_Sept2003.prz	32323249	File	11/12/2003 09:15:31 AM	Copy Rename Delete Work with
ASJ_2003Nov_IJAWBeta.doc	78336	File	11/12/2003 09:16:19 AM	Copy Rename Delete Work with
Bri3Fish.bmp	6632934	File	11/12/2003 09:08:25 AM	Copy Rename Delete

Work with data in PC files on IFS...

Working with PC files:

- **View data in your browser**
 - For example, look at a Microsoft Word document
- **Double-click on file and then save it on your PC**
 - You can then work with file using appropriate PC application then copy it back to IFS with Access for Web



Working with PC directories:

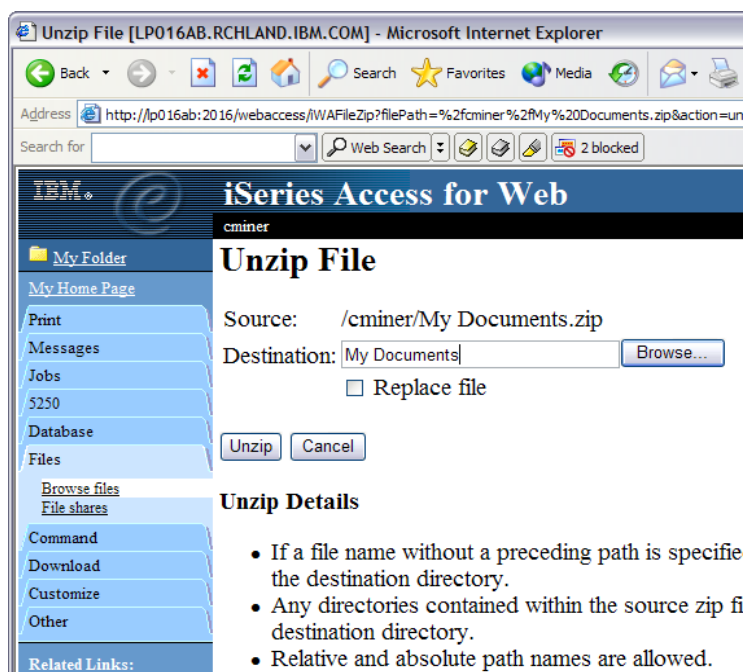
- You can create a folder (subdirectory) on IFS, but you can only copy files (not folders) to the IFS using Access for Web
- You can zip up your PC directory, upload the zip file, and use Access for Web unzip capability to unzip the directory. This is beneficial in an internet environment as zipping compresses data and sends less across the line.
- You can then work with individual PC files as above

Zip Directory

'Zip' and 'Unzip' - new V5R3 functions

- **Use desktop zip program to zip up a PC directory**
- **Use Access for Web to:**
 - Upload the zipped directory
 - 'Unzip File' to separate files in new subdirectory

This is beneficial in an internet environment as zipping compresses data and sends less across the line.



Other ways to work with data in PC information on IFS...

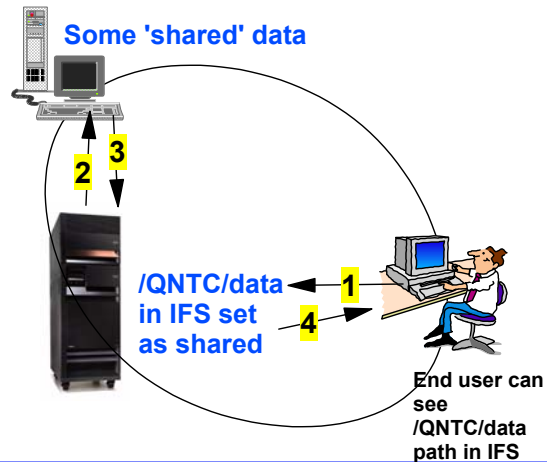
From desktop O/S

Use **NetServer** capability to perform other 'File Server' functions:

- Create a directory on the iSeries IFS
- Use iSeries Navigator to set it up as a 'shared' directory
- Then from PC, use 'Map a Network Drive' to the shared directory
 - The information is then accessed just as though it is on the PC

From desktop O/S

Combine use of NetServer and **QNTC** capability to get at information on another PC



Notes: How do I work with PC data in the IFS?

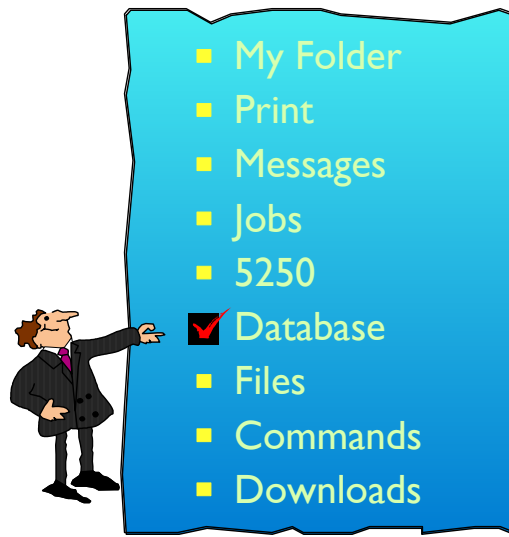
Use NetServer share

1. You can also create a NetServer share to work with files in the IFS directory

Use QNTC function to map an IFS directory to a Windows share:

Note: This example is setting a directory on your PC to be shared with others. They will be able to see this directory when they use Access for Web Files / Browse Files and they will see it if they go directory to iSeries server using My Computer function from desktop.

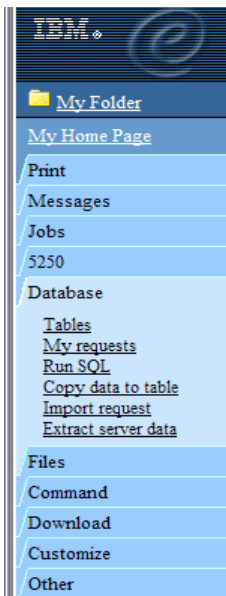
1. Make sure your iSeries user profile and password are exactly the same as your Windows user id and password.
2. Make sure NetServer is started on the iSeries. You can do that through iSeries Navigator (or, there are CL commands on V5R3 systems).
3. On the iSeries, in the IFS, make a new directory under '/QNTC' that is the name of your PC. For example, the name of my PC is cminer, so I would issue a mkdir '/qntc/cminer' on the green screen.
4. Make sure that you have file sharing enabled on your PC.
 - On Windows 2000 and XP: Click on Windows Control Panel, go to Network and Dial-up connections, and right-click Properties on your connection. The dialog box should list several checked components. One of them should be "File and Printer Sharing for Microsoft Networks." If not, you have to add it as a new protocol using the "Install..." button.
5. Make sure you have a directory shared out on your PC. You can right-click on any folder in Windows and do "Sharing..." to create the share.
6. You can use WRKLNK or QShell or Access for Web or iSeries Navigator to see what file shares exist for cminer in /qntc/cminer.



A camp for young students recently used the iSeries Access for Web database functions to query, view, and listen to MPEG files stored as BLOBs in the iSeries database.

The students could run a query against the song titles, generate a list of songs they like, and email the database results to someone who could then cut a CD with the songs they picked

Work with DB2 UDB for iSeries



Access database tables on your iSeries server with iSeries Access for Web

■ Tables

- View contents of a table using Quick View
- Add or update records using 'Insert and Update'
- Perform actions without having knowledge of SQL and its syntax

■ List previously saved requests

- Run or Edit Requests
- Copy, Delete, and Rename actions

■ RUN SQL using SQL Wizard

■ Exchange spreadsheet data with iSeries

■ Import existing Client Access Express for Windows Data Transfer requests

■ Extract Server data

Notes: Access database tables on iSeries

Tables

- View a list of database tables on your iSeries server.
- Perform actions on these tables without having knowledge of SQL and its syntax.
- View the contents of a table in a paged list, using the Quick view action.
- Add and update records in a table using the Insert and Update actions.
- Create your own customized SQL request for a table using the Create SQL request action.

My requests

- View a list of previously saved requests.
- Run or Edit requests from this list.
- Manage lists using the Copy, Delete, and Rename actions
- Create and manage shortcuts to requests

Run SQL

- Run SQL statements dynamically.
- View output as a paged list or in a popular file format, like Microsoft Excel or Lotus 1-2-3. (Output format depends on how you have your browser configured and whether the browser can locate a plug-in for the output type you choose.)
- Customize how data is returned by setting options specific to the output type.
- Build SELECT statements using an SQL Wizard.
- Save requests for repeated use.

Copy data to table

- Copy existing data files from your PC to a database table on your iSeries server.
- These data files can be in many popular file formats, including Microsoft Excel and Lotus 1-2-3.
- Replace the contents of a table or add data to an existing table.
- Create a new database table based on the contents of a workstation file
- Save requests for repeated use.

Import request

- Import Client Access Data Transfer upload and download requests into iSeries Access for Web copy data and SQL requests.
- Imported requests are automatically converted to iSeries Access for Web format.
- Run and edit converted requests on your iSeries server just like other copy data and SQL requests.

iSeries Database Tables

Lotus SmartSuite - Freeland Graphics - (W02 WebAccess)

Tables - Microsoft Internet Explorer

Address: http://rchas1dd/webaccess/iWADbTables

Tables filter: *USRLIBL

Table	Description	Action
QGPL.BASICCSV		Insert Update Quick view Run SQL Copy data to table
QGPL.LK_105KTMM		Insert Update Quick view Run SQL Copy data to table
QGPL.QAOEFFVL	FORM FIELD VALID VALUES FILE	Insert Update Quick view Run SQL Copy data to table
QGPL.QASUUSRPMT		Insert Update Quick view Run SQL Copy data to table
QGPL.QCLSRC	DEFAULT SOURCE DATA BASE FILE FOR CL SOURCE	Insert Update Quick view Run SQL Copy data to table
QGPL.QCMDSRC	DEFAULT SOURCE DATA BASE FILE FOR CMD DEF SRC	Insert Update Quick view Run SQL Copy data to table

IBM eServer iSeries

Database - Tables - Quick View - Update...

iSeries Access for Web
cminer

Quick View of QGPL.QCUSTCDT

Navigation: [1] < > >> >>>

CUSNUM	LSTNAM	INIT	STREET	CITY	STATE	ZIPCODE	C
938472	Henning	G K	4859 Elm Ave	Dallas	TX	75217	
839283	Jones	B D	21B NW 135 St	Clay	NY	13041	
392859	Vine	S S	PO Box 79	Broton	VT	5046	
938485	Johnson	J A	3 Alpine Way	Helen	GA	30545	
397267	Tyron	W E	13 Myrtle Dr	Hector	NY	14841	
389572	Stevens	K L	208 Snow Pass	Denver	CO	80226	
846283	Alison	J S	787 Lake Dr	Isle	MN	56342	
475938	Doe	J W	59 Archer Rd	Sutter	CA	95685	
693829	Thomas	A N	3 Dove Circle	Casper	WY	82609	
593029	Williams	E D	485 SE 2 Ave	Dallas	TX	75218	
192837	Lee	F L	5963 Oak St	Hector	NY	14841	
583990	Abraham	M T	392 Mill St	Isle	MN	56342	

Navigation: [1] < > >> >>>

Update Record

To update the record, change column values and click Update Record. Fields in

Column	Type	Value	Description
CUSNUM	NUMERIC(6,0)	938472	Customer number field
LSTNAM	CHAR(3)	Henning	Last name field
INIT	CHAR(3)	G K	First and middle initial field
STREET	CHAR(13)	4859 Elm Ave	Street address field
CITY	CHAR(6)	Dallas	City field
STATE	CHAR(2)	TX	State abbreviation field
ZIPOOD	NUMERIC(5,0)	75217	Zip code field
CDTLMT	NUMERIC(4,0)	5000	Credit limit field
CHGOOD	NUMERIC(1,0)	3	Charge code field
BALDUE	NUMERIC(6,2)	37.00	Balance due field
CDTDUE	NUMERIC(6,2)	0.00	Credit due field

* designates a required field. Fields that cannot be changed have unsupported

Update Record

© 2003 IBM Corporation

IBM eServer iSeries

Run SQL

Run SQL [RCHAS1DD.RCHLAND.IBM.COM] - Microsoft Internet Explorer

Address: http://rchas1dd/webaccess/WADbRunSQL

iSeries Access for Web
cminer

Run SQL

SQL Statement

SQL Wizard

SQL Output

Type: Preview

Settings

Format

Date: 8/8/01

Time: 3:49:50 PM

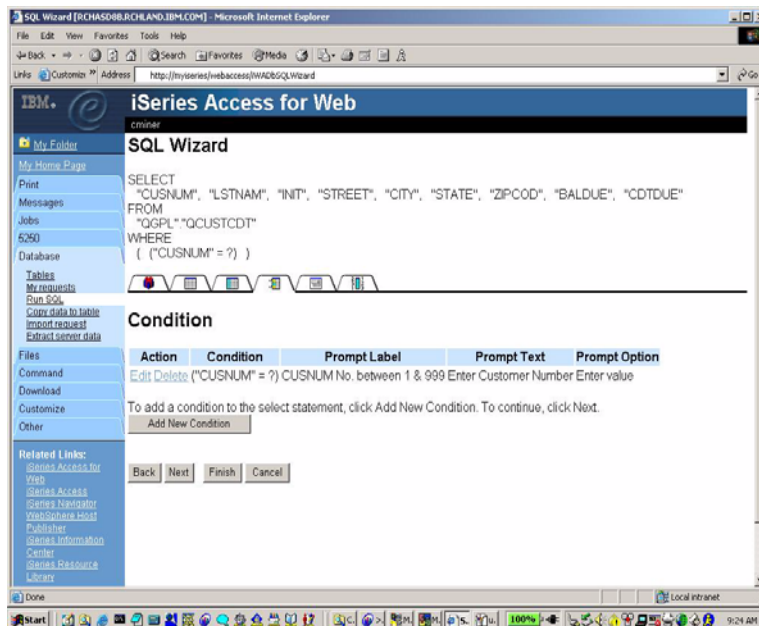
Connection

Connection: IBM Toolbox for Java - RCHAS1DD.RCHLAND.IBM.COM

- Run SQL allows you to dynamically run SQL statements
- Could copy/paste complex SQL statements in here...
- Includes SQL Wizard for user who doesn't know SQL

© 2003 IBM Corporation

SQL Wizard



SQL Wizard enables you to:

- **Select tables**
- **Select which columns to return**
- **Adds conditions to your select statement**
- **Select the columns by which you want the data sorted**

Notes: Run SQL

SQL Output Details

When the SQL statement is run, the output is displayed in the browser, or it can be loaded using another application or saved to a file. The output behavior is dependent on the selected SQL output type and on the current browser settings. Most output types support settings for additional output customization. The following output types are supported:

- **Preview** - Paged-table list format, displayed in the browser. The maximum number of rows returned in the list can be limited, using Customization to set a database preference.
- **Comma Separated Value** -Text format where fields are separated by commas.
- **Data Interchange Format** - Format that represents data in rows and columns. The DIF format is used for data interchange between spreadsheet programs and other application programs.
- **Hyper Text Markup Language** - Format commonly used by internet browsers. The rows per table setting controls whether the output is returned as a paged-list, similar to the preview type, or as a single HTML page.
- **Lotus 1-2-3 Version 1** - Format used by Lotus 1-2-3 Version 1. The generated output can also be used with newer versions of the Lotus 1-2-3 application. Output is truncated to 8192 rows, since 8192 rows is the maximum sheet size supported by the Lotus 1-2 3 version 1 format.
- **Microsoft Excel 3** - Binary Interchange File Format used by Microsoft Excel 3. The generated output can also be used with newer versions of the Microsoft Excel application. Output is truncated to 16384 rows, since 16384 rows is the maximum number of rows supported by the Microsoft Excel 3 format.

- **Microsoft Excel 4** - Binary Interchange File Format used by Microsoft Excel 4. The generated output can also be used with newer versions of the Microsoft Excel application. Output is truncated to 16384 rows, since 16384 rows is the maximum number of rows supported by the Microsoft Excel 4 format.
- **Text - Plain Plain text** format used for editing, displaying and printing. No separator characters are placed between the fields of data.
- **Text - Tab Delimited Text** format where fields are separated by tab characters.

Format Details

The format settings control how values in date and time columns are returned.

Available formats are the short, medium, long, and full formats for the current language. The standard ISO date and time formats are also available.

Some languages do not support four different date and time formats. Therefore, some entries in the format lists can be identical.

Connection Details

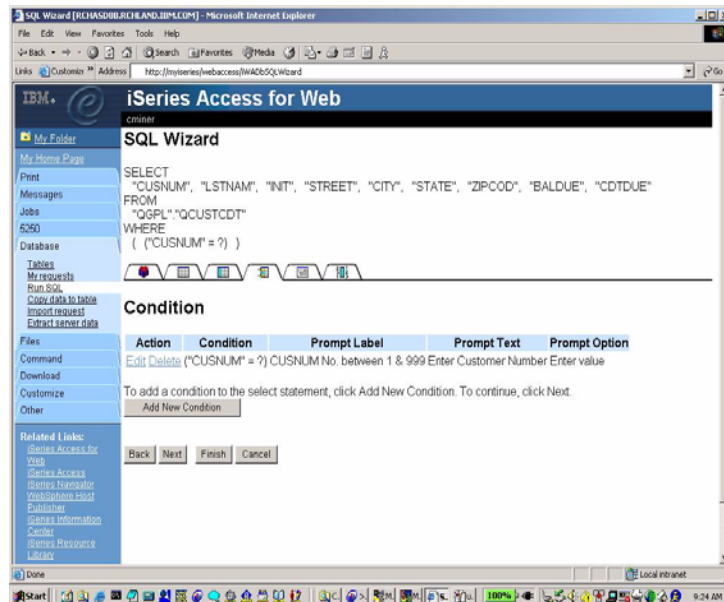
The connection setting controls the database connection used to run the SQL statement.

Database connections can be defined by the system administrator, using Database Customization

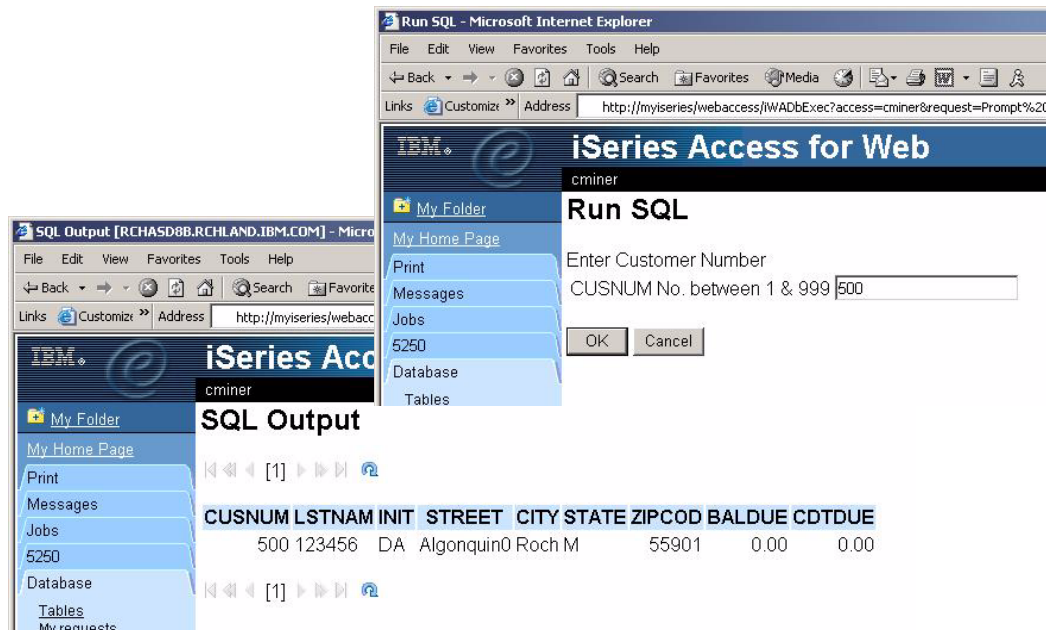
V5R3 - Dynamic Database Queries

Support for dynamic database queries

- The SQL Wizard now contains the ability to generate SQL statement with markers for conditional values
- For example, an Administrator might build a query to retrieve some particular customer information, then when the end user runs the query a prompt would appear for user to key in 'customer name', 'customer number', etc.



Prompted database request...



Notes: V5R3 Database enhancements

Database enhancements

Access for Web enables you to work with the iSeries database through a pure SQL interface. Access for Web provides wizards for building the SQL request, wizards for directly updating a database table, or drop database output into an Excel spreadsheet, and much more. Most useful is that the iSeries administrator can create database requests, and then through OS/400 user/group profiles enable end users to run only the database requests that they have been granted access to. (see article written by Janet Weber)

New in the V5R3 version of Access for Web are:

- **Prompted Requests** - the V5R2 version of Access for Web enables one to build an SQL request, save it, and rerun it -- as well as making it available to others to run. With the beta Access for Web one can now build a request that will prompt the end user for one or more conditional values (such as customer number, part number, telephone number, etc) when the request is run. The results of the request can be viewed in the end user browser, attached to an email, shown in an Excel spreadsheet, or put in a file or Personal Folder. The Access for Web SQL Wizard has been enhanced to build these prompted requests. You can also use the 'Run SQL' action to manually create statements with parameter markers (Note: values for the parameter markers must be supplied using an HTML form or URL parameters when the request is run).
- **Support for the XML spreadsheet format** used by Microsoft Excel 2002 - both the Run SQL and Copy Data to Table now support this.
- **'Extract Server Data'** - is a new action under the Database tab. Extract Server Data can be used to retrieve information about objects on the iSeries server, and then store the results in a database table. General object information can be retrieved for any iSeries object type. Object specific information can also be retrieved for the following object types: Directory entries, Messages, Software fixes, Software products, System pool, User profiles (see Figure 8). For example, I could easily build a query to find out what users have used more than 100 MB of storage in the IFS, or I might want to know what users have had more than 2 invalid signon attempts in the past three months. This very powerful capability lets you look at your iSeries information in any manner that is of importance to you.

Run SQL (build freehand or use SQL Wizard)

Many Output Types, including:

- **XML, XLS, WKI, PDF**

Destinations include

- **Browser**
- **email as an attachment**
- **Personal folder**

Run Request previously built and saved...

My Requests

Request	Description	Action	Shortcut	Created By	Access
A ShortCust	Select from the Parts table - Looking for NULL Descriptions	Run Copy	Yes	wademo	*PUBLIC
bargains		Run Copy	Yes	boatadmin	*PUBLIC
QCUST Balance Due	Check for balance due over 5	Run Copy Delete Rename Create shortcut Edit	No	cminer	cminer
Shortcut to Customer List	All customers - output to Excel	Run Copy	Yes	jrbauer	*PUBLIC
Shortcut to My Upload Request	My Upload Request	Run Copy	Yes	wa01	*PUBLIC
short hello		Run Copy	Yes	jek	*PUBLIC
ShortUpload		Run Copy	Yes	jek	*PUBLIC
terryShort		Run Copy	Yes	jek	*PUBLIC

Upload Data

Copy Data to Table

File to Copy

File: [Browse...](#)

File type: Comma Separated Value (.csv) [Settings](#)

Table to

Table:

Action: R

Connection

Connection: IBM Toolbox for Java - LP016AB.RCHLAND.IBM.COM

[Copy Data to Table](#) [Save Request...](#)

Upload data from a variety of file types

- Excel, XML, Lotus, etc

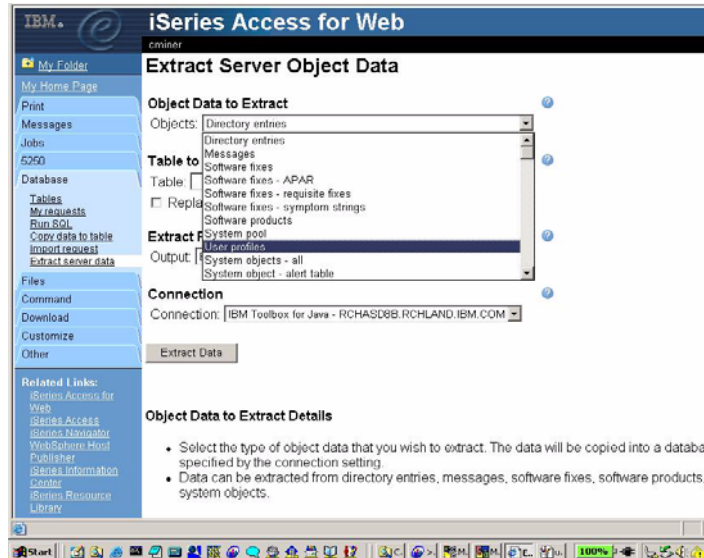
Put into iSeries database

- 'Replace' contents of table
- 'Append' to existing data

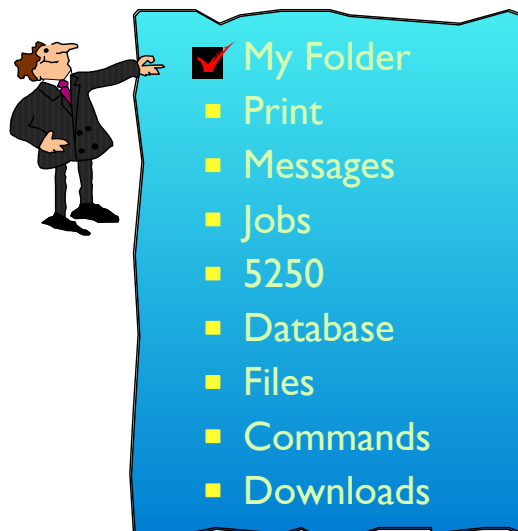
Extract Server Data

Extract Server Data can be used to retrieve information about objects on the iSeries server, and then store the results in a database table

- General object information can be retrieved for any iSeries object type.
- Object specific information can also be retrieved for the following object types:
Directory entries, Messages, Software fixes, Software products, System pool, User profiles



You could easily build a query to find out what users have used more than 100 MB of storage in the IFS, or you might want to know what users have had more than 2 invalid signon attempts in the past three months. This very powerful capability lets you look at your iSeries information in any manner that is of importance to you.



My Folder - new in V5R2 version...

My Folder

- **Container resides on the web server and can only be accessed by owner**
 - Good for long-running requests (ie, actions performed asynchronously so the browser is not tied up)
 - An easy way to avoid large attachments (ie, a large query result)
- **Can place information in other users' My Folders**
 - Performing requests for someone else
 - Mechanism for workflow.

Combine new Mail function with My Folder function to:

- ▶ Perform requests for someone else
- ▶ Distribute results to a group of users
- ▶ Send email to other when you place information in their Folder
- ▶ Be notified when new items are placed in your Folder

Notes: Mail and My Folder

New 'My Folder' Support

The V5R2 iSeries Access for Web provides a new My Folder concept that enables items to be placed in a user's Personal Folder. A current user or another user may place items in a Personal Folder. The Personal Folder is particularly attractive if you have a long-running task to perform as rather than tying up your browser waiting for it to complete. You might use the My Folder support to perform requests for someone else or to distribute results to a group of users as you can simply indicate to send the results to the Personal Folders when it completes. The Personal Folder that can be accessed via the "My Folder" link in the navigation pane, and it special icons will display to represent if there are items that have been placed in the Personal Folder as well as if there are any new/unopened items. The following types of items can be sent to a personal folder.

- SQL output generated by Run SQL
- PDF output created from Printer output
- Command completion status generated by Run Command (can only be sent to a user's own Personal Folder)

My Folder can contain items with the following information: Item description, Status, From, Data/Time, and Size. It has an 'Actions' column that lists the available actions for items in the folder. You would be able to perform actions, such as: Mark All Opened, Mark All Unopened, Delete all Opened items, Delete all items, and Delete Selected items

Choose 'My Folder' as output destination...

iSeries Access for Web
cminer

PDF Output Settings

Destination: Browser Settings ?

Advanced

Run

Destination Details

Specifies the destination of the newly created PDF to the following options:

Browser

Select Folders to receive your output

iSeries Access for Web
cminer

Browse Folder Owners

Folder owners:

- CELIAD (Celina Gutierrez user testing TL877-2758 GDLXD1)
- CELINA (Celina Magallanes - Gdl Testing 877-2758)
- CMINER (Carole Miner 3-4606)
- COOLGROUP (Janet Weber 3-1811)
- CSKY (Carl Pecinovsky (3-3861))
- CSMITH (Chris Smith - 3-4127 - WebAccess / Toolbox)
- CSMITHTMP
- DANG (Dan Gathje 3-5696)
- DANNY (Dan Moravec 3-0904)
- DANNY2 (Dan Moravec 3-0904)
- DAW (David Wall 3-5329)
- DAWALL (Dave Wall 3-5329)
- DBM (Dave Murray)
- DEMOUSERS
- DEMOUSER1

OK Cancel

Go to 'My Folder' to see output...

IBM iSeries Access for Web
cminer LP016AB.RCHLAND.IBM.COM

My Folder

My Home Page
Print
Messages
Jobs
5250
Database
Files
Command
Download
Customize
Other

Related Links:
iSeries Access for Web
iSeries Access
iSeries Navigator
WebSphere Host
Publisher
iSeries Information
Center

Item	Status	From	Date/Time	Size	Action
<input type="checkbox"/> Status [SQL output in TXT]	Unopened	cminer	1/7/04 3:39 PM	235	Open Delete Rename Copy Copy to file Mail Mark opened
<input type="checkbox"/> SQL output in TXT	Unopened	cminer	1/7/04 3:39 PM	14359	Open Delete Rename Copy Copy to file Mail Mark opened
<input type="checkbox"/> QSYS/WRKACTJOB	Unopened	cminer	1/7/04 3:04 PM	51	Open Delete Rename Copy Copy to file Mail Mark opened
<input type="checkbox"/> Printer output in PDF	Unopened	cminer	1/7/04 3:02 PM	13179	Open Delete Rename Copy Copy to file Mail Mark opened
<input type="checkbox"/> Printer output in PDF	Unopened	cminer	1/7/04 2:52 PM	13179	Open Delete Rename Copy Copy to file Mail Mark opened

Delete Selected Items

Get email when new information put in My Folder

IBM iSeries Access for Web
cminer

Policies - My Folder

Profile: CMINER

Policy	Derived From
My Folder access	Shipped default
My Folder link	Shipped default
Create folder items	Shipped default
Rename folder items	Shipped default
Copy folder items	Shipped default
Copy folder items to file	Shipped default
Mail folder items	Shipped default
Mark folder items opened/unopened	Shipped default
My Folder notification	Shipped default
Notify on new folder items	Shipped default
Notify on folder	Shipped default

Use current setting Allow
Use current setting Yes
Use current setting E-mail and Sametime
Use current setting Yes

Carole Miner - Inbox - Lotus Notes

File Edit View Create Actions Help

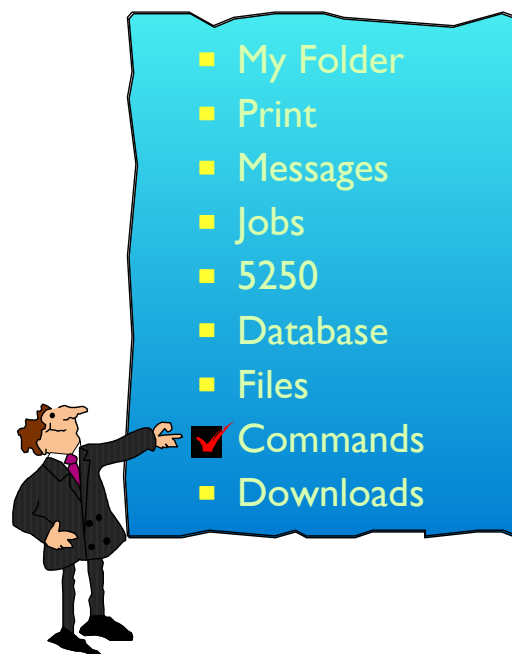
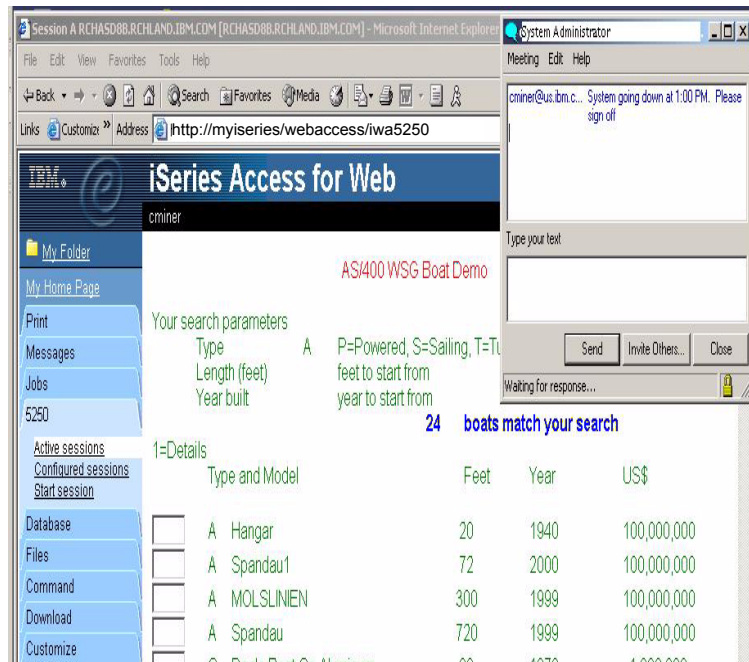
Welcome 01/07/2004 09:49:12 AM Carole Miner - Inbox

Who	Date	Size	Subject
Carole Miner	01/07/2004 03:41 PM	2,565	New Folder Item - Status [SQL output in TXT]
Carole Miner	01/07/2004 03:41 PM	2,541	New Folder Item - SQL output in TXT
Cecelia Manrese	01/07/2004 03:33 PM	3,242	iSeries Team Dinner at SGU
Carole Miner	01/07/2004 03:05 PM	2,529	New Folder Item - QSYS/WRKACTJOB
Carole Miner	01/07/2004 03:03 PM	2,548	New Folder Item - Printer output in PDF
Carole Miner	01/07/2004 02:54 PM	2,550	New Folder Item - Printer output in PDF
Linda Gigoleit	01/07/2004 02:39 PM	90,629	IBM Confidential: Recap of 1/7 Meeting
NEWS Wire Daily	01/07/2004 02:37 PM	26,917	NEWS Wire Daily - January 7, 2004

Integration with Lotus Sametime...

Customers can integrate the use of Lotus Sametime (an add-on to Domino)

- Users can then be notified via a Sametime pop-up when something has been added to their Personal Folder
- Receive break messages when in a 5250 emulation session
 - For example, to tell users to sign off the system or to check their e-mail for some important note, etc



Run CL Commands on iSeries

Command

Access batch commands on your iSeries server with iSeries Access for Web.

My commands

- List and use previously saved commands.

Run command

- Run a CL command on your iSeries server.

Search

- Search for CL commands on your iSeries server.

Additions to V5R2 version

- Commands can be saved and retrieved later
- Can search for commands by name or description
- New destinations
 - email and my folder

Notes: Commands

The Command tab enables you to run batch-level iSeries commands. New in V5R2 iSeries Access for Web, you can now also search for CL commands on the iSeries, and save commands you have previously run. Interactive commands can be prompted and run as well, but you receive only success or failure from the iSeries server; however if you specify *PRINT for the output you could then view the spooled file output of the interactive command using the iSeries Access for Web Print function.

Search and prompting - you can search for specific CL commands to run by either providing a partial command name (i.e. DSP*) or providing words contained in command text descriptions (i.e. user profile). Commands matching the search criteria are returned in a list. When an incomplete command is specified, the Command function supports prompting the command to help a user complete the command. In addition to the basic prompting function, the command prompter page also displays help for individual parameters of a command in a separate browser window.

My Commands - a 'Save' action on a previously run command allows you to name and save a command for later use, and then access it through the My Commands tab. You can additionally overwrite an existing command and create a new command

Run Command - enables you to run a new command or select a previously run command from the Previous Commands list.

Although the Commands function is primarily designed to run batch commands, you could run an interactive command (ie, one that is sending back input or something you want) and tell the interactive command to send its results to *PRINT. Then once that command ran and it put the result on the printer output file, you could use the Print, 'Print Output' function and look at the results of that interactive command). You can select any of the following output types for the completion status message:

- o Browser - you can send the completion status to your browser
- o Mail - you can e-mail the completion status message to your e-mail address
- o Folder - you can save the completion status message in your Personal Folder

An advantage of sending command completion status as an e-mail attachment or to a Personal folder is that the command is submitted in the background, and the browser page is updated immediately with a message saying the command was submitted. Using these new output options enables users to submit additional Run Command requests without having to wait for the current command to complete

IBM eServer iSeries

IBM

Command Search...

Y5/WRKACTJOB [iSeriesD.DFW.IBM.COM] - Microsoft Internet Explorer

avorites Tools Help

Search Favorites History

Address http://seriesd.dfw.ibm.com/webaccess/IWACCommandPrompter?cmd=QSYS%2fWRKAC

Search for Commands [iSeriesD.DFW.IBM.COM] - Microsoft Internet Explorer

File Edit View Favorites Tools Help

Back Search Favorites History

Address Search?type=txt&cmd=work%20active%20job&page=1&form

IBM. iSeries Access for Web

cmminer

My Folder

My Home Page

Print

Messages

Jobs

5250

Database

Files

Command

My commands

Run command

Search

Customize

Other

Search for Commands

Command: work active job

Library: *LIBL

Search by:

Command name

Text description

Search

Command

Library

Description

WRKACTJOB

QSYS

Work with Active Jobs

WRKNETNOE

QSYS

Work with Network Job Entries

DSPACTPJ

QSYS

Display Active Prestart Jobs

WRKJOBS

QSYS

Work with Jobs using JS

iSeries Access for Web

cmminer

Work with Active Jobs (WRKACTJOB)

Output *

Output: Browser

Run C

Submit Batch Job

Advanced

Cancel

© 2003 IBM Corporation

IBM eServer iSeries

IBM

My Folder

Print

Messages

Jobs

5250

Database

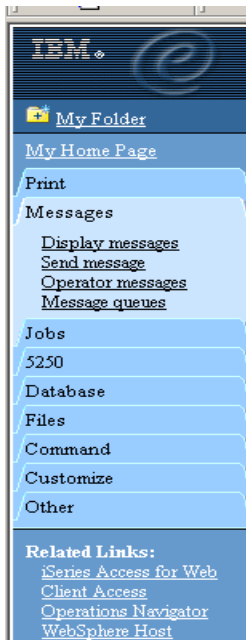
Files

Commands

Downloads

© 2003 IBM Corporation

Messages



■ Send messages

- Send a message to users and message queues

■ Display messages

- Display, answer and manage messages in the message queue for the logged on user

■ Operator Messages

- Display, answer and manage messages in the system operator message queue

■ Message queues

- Select, display and manage messages in message queues

Send a message...

Send Message

To users:

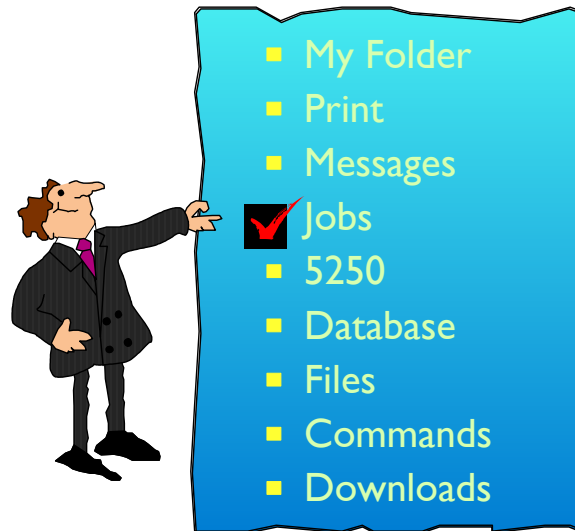
To message queues:

From: QUSRSYS/WUSER

Message type: ☒ Informational ☐ Inquiry

Message:

Note: Use either system naming (mylib/mymsgq) or simply mymsgq



My 'Server' jobs

Series Access for Web

Jobs [RCHAS1DD.REHLAND.IBM.COM] - Microsoft Internet Explorer

Address: http://rchas1dd:2012/webaccess/IWAJobList?jobtype=server

Server Jobs for cminer

Navigation: [1] [Previous] [Next]

Job	Detailed Status	Server	Run Priority	Thread Count	Action
QGYSERVER	Waiting for dequeue	OS/400 Open List Server	20	1	Hold Delete/End Job Log Properties
QPWFSEVSO	Waiting for dequeue	OS/400 TCP File Server	20	1	Hold Delete/End Job Log Properties
QZDASOINIT	Waiting for dequeue	OS/400 TCP Database Server	20	1	Hold Delete/End Job Log Properties
QZDASOINIT	Waiting for dequeue	OS/400 TCP Database Server	20	1	Hold Delete/End Job Log Properties
QZRCSRVS	Waiting for message	OS/400 TCP Remote Command Server	20	1	Hold Delete/End Job Log Properties
QZRCSRVS	Waiting for message	OS/400 TCP Remote Command Server	20	1	Hold Delete/End Job Log Properties
QZRCSRVS	Running	OS/400 TCP Remote Command Server	20	1	Hold Delete/End Job Log Properties
QZSCSRVS	Waiting for time interval	OS/400 TCP Central Server	20	1	Hold Delete/End Job Log Properties

New in V5R2 edition

Left Panel:

- My Folder
- My Home Page
- Print
- Messages
- Jobs
 - Jobs
 - Server jobs
- 5250
- Database
- Files
- Command
- Customize
- Other

Related Links:

- Series Access for Web
- Client Access
- Operations Navigator
- WebSphere Host
- Publisher
- iSeries Information

Jobs for signed on user

iSeries Access for Web
cminer LP016AB.RCHLAND.IBM

Jobs for cminer

Navigation: [1]

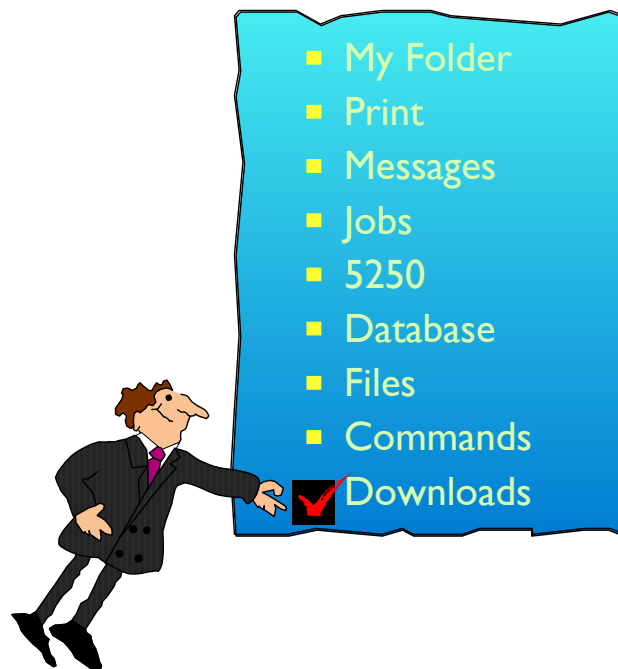
Job	Status	Type	Entered System	Action
CMINER0	Completed	Interactive	1/5/04 11:46:30 AM	Printer Output Properties
QPADEV000H	Ended	Interactive	1/7/04 3:17:17 PM	Printer Output Properties
QPRTJOB	Completed	Batch print	11/13/03 10:01:40 AM	Printer Output Properties

Navigation: [1]

[Jobs preferences](#)
Customize job list preferences

Jobs Preferences - set Job List filter for:

- All jobs, Active jobs, Active jobs and waiting to run, Jobs waiting to run, Completed jobs



Downloads



Use downloads for managed file distribution with iSeries Access for Web.

- **A download is a file stored on the iSeries server that is made available for distribution through iSeries Access for Web**
 - Some IBM products are available as iSeries Access for Web downloads.
 - You can also create your own downloads
 - Great way for users to install iSeries Access for Windows. Create a Tailored Install (ie, just the functions you want users to have and let them download just those pieces)
 - Great way to get other desktop applications to your users.
- **A set of management functions are provided for updating downloads and for controlling access to them.**

Download programs to your PC

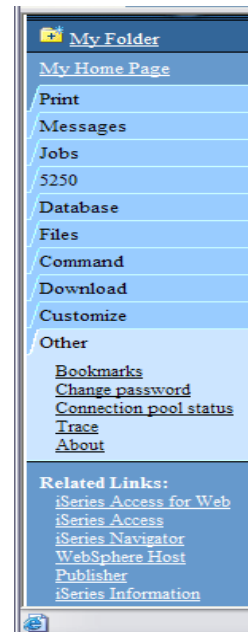
 A screenshot of the 'Downloads' page in iSeries Access for Web. The page has a header 'iSeries Access for Web' and a user identifier 'cminer'. Below the header is a navigation pane on the left. The main content area displays a table of downloads.

Name	Description	File	Size	Action
iSeries Access for Linux	iSeries Access for Linux contains a full 5250 emulator and an enhanced ODBC driver. For more information see: http://www.ibm.com/eserver/iseries/access/linux/ .	iSeriesAccess-5.2.0-1.1.i386.rpm	2,684,164	Download Work with
Windows AFP Viewer Plug-in	The AFP Viewer plug-in lets you view AFP documents from a Web browser.	gnsp32dm.exe	8,198,372	Download Work with

You can create your own download files too. Use Create Download to make a file available for distribution

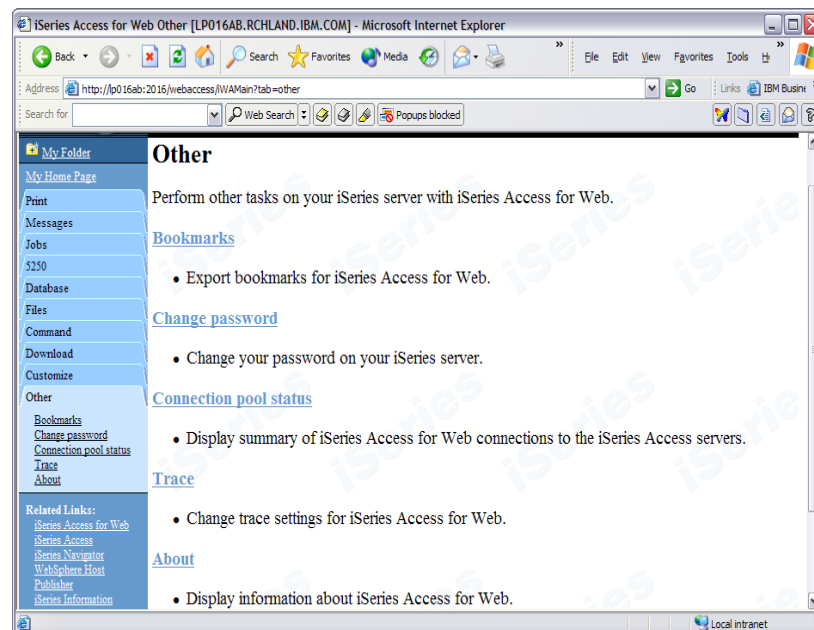
- The file is copied to the server on which iSeries Access for Web is running.
- After the download is created, it is added to the Downloads list. It can only be accessed by the user who created it and by users with *SECADM authority.
 - Use the Work with action from the Downloads list and select the Manage Access link to make the download available to other users.

Other



Under the 'Other' tab...

- **Bookmarks**
- **Change iSeries password**
- **Connection pool status**
- **Trace**
- **About**



Under the 'About' tab...

- **Product information about Access for Web**
- **About end user connection**
 - Request information
 - Request headers
 - iSeries Access for Web information
- **iSeries Access for Web properties**
 - IBM Toolbox for Java properties
 - Connection pool settings
- **File Content Type Map**
- **System Properties**
- **Memory**
- **List installed software products on iSeries** ★
 - List Software fixes installed
- **List system values** ★
 - Allocation system values, date/time, security system values...

*More on
'Customization'*



Access for Web can be the window to iSeries resources

Different look/interface for different browser users

- Shipped/Default method of accessing iSeries resources
 - ▶ For a more experienced iSeries end user, this provides a highly productive interface for working with all iSeries resources
- Customize user 'window' to iSeries
 - ▶ For the inexperienced user -- and to tightly control exactly what functions a user can perform on your iSeries -- as easy-to-use Customize function enables iSeries administrators to create unique 'windows' to the iSeries.
 - ▶ These are associated with OS/400 profiles -- thus an administrator could create many different 'windows' for different types of users.



Address <http://seriesd.fw.ibm.com/webaccess/WAHome>



Services

[See boat details - 5250](#)
[See boat details - HATS LE](#)
[See boat details - WebFacing](#)
[See boat details - Host Publisher](#)
[View available boats](#)
[Order a boat](#)

[Work with invoices](#)
[Check messages](#)
[Check system messages](#)
[Administrator tasks](#)
[Manage incoming items](#)
[Monitor jobs](#)

This Week's Special



Beautifully maintained 28 foot 1978 Carver Santa Cruz for only \$23,900. Head and galley refurbished in 2001. Only 31 hours on completely rebuilt motor. Click [here](#) to see this boat cruising the seas.

Great Deals

For those bargain conscious among you, we have a large selection of new and slightly used boats for under \$75,000. Whether you are planning on sailing in your backyard pond or navigating the mighty Mississippi we can meet your wants, needs, or desires.

[View our selection of modestly priced boats.](#)

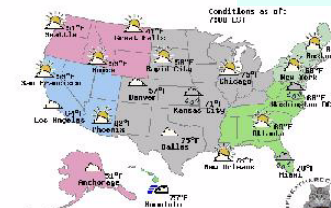
Site Support

Your comments are important let us know if you have any question we can help you in any way. Add message to user BOATHELP [message](#)

If you prefer to contact us direct [telephone directory](#) to lookup phone and e-mail addresses.

Weather Conditions

Is it a great day for boating? Check today's forecast.



Access for Web provides customization capabilities

- Could be used as 'entry' point to iSeries
- Run your Host Publisher or WebFacing applications from here

Notes: Customizing iSeries Access Front Page

As you have seen in the previous charts, the front page of iSeries Access for Web can be 100% modified to look however your customer wants it to look. The Web page I see when I key in the url is the Web page associated with my USER ID. I could be the only one in my group profile that sees a particular view of the Web page, or I could be in a group profile with many other users. There is no limit as to how many different 'front pages' a customer may want to design/use for different groups of users.

Designing a front page is quite easy, it simply requires knowledge of HTML (not Java or other programming languages). One could use any one of their favorite HTML tools (like MS FrontPage, etc).

To see step-by-step how we customized our 'Access for Water' web page -- look in the recently published Redbook (<http://publib-b.boulder.ibm.com/cgi-bin/searchsite.cgi?query=SG24-6804>)

You can easily view or download this document by going to the iSeries Access web page at www.ibm.com/eserver/iseries/access, then follow page to iSeries Access for Web.

Traditional Vs Access for Web 5250 interface...

The image compares two interfaces for the 'AS/400 WSG Boat Demo' application. On the left is a traditional 5250 terminal interface, and on the right is the iSeries Access for Web browser interface.

Traditional 5250 interface (left): Shows a terminal window with the title 'AS/400 WSG Boat Demo' and a timestamp '10/04/02 10:52:36'. The screen displays search parameters: Type (A), Length (feet), and Year built. A yellow box with an arrow points to the 'A' in the Type field, with the text 'Using a traditional 5250 interface'. At the bottom, there are buttons for 'Attention', 'Refresh Screen', 'System Request', and 'Stop Session'.

iSeries Access for Web interface (right): Shows a Microsoft Internet Explorer browser window with the title 'Session A localhost [SeriesD.DFW.IBM.COM] - Microsoft Internet Explorer'. The address bar shows 'http://seriesd.dfw.ibm.com/webaccess/iWAS250?ntmac=startboat'. The page features the IBM logo and the text 'Access for Water' with a tagline 'Supplying quality boats since 2002'. Below this is a 'Home' link. The main content area displays the same search parameters as the terminal interface. A yellow box with an arrow points to the 'A' in the Type field, with the text 'Simply using iSeries Access for Web 5250 interface'. At the bottom, there is a footer with 'F3=End' and the number '37'.

Boats application - WebFacing

Boats - Microsoft Internet Explorer

File Edit View Favorites Tools Help

Back Forward Stop Search Favorites History Print W Print W Print W

Links Search t Address http://iseriesd.fww.ibm.com:2014/boats/WFLogin

Search X

Ne »

Choose a

Find

Find

Find

Prev

Find

Enter

End

Find a v

Brought

Boats

AS/400 WSG Boat Demo 10/03/02 20:36:37

Enter your search parameters

Type P=Powered, S=Sailing, T=Tug, C=Commercial, A=All

Length (feet) feet to start from

Year built year to start from

WebFacing

Boats Application - HATS LE

Access for Water

AS/400 WSG Boat Demo 9/08/03 17:52:40

Enter your search parameters

Type P=Powered, S=Sailing, T=Tug, C=Commercial, A=All

Length (feet) feet to start from

Year built year to start from

Reset

Default

Refresh

Disconnect

Keyboard off

End

PF1 PF2 PF3 PF4 PF5 PF6 PF7 PF8 PF9 PF10 PF11 PF12

PF13 PF14 PF15 PF16 PF17 PF18 PF19 PF20 PF21 PF22 PF23 PF24

ENTER CLEAR SYSREQ ATTN PAGEUP PAGEDN

HELP PRINT PA1 PA2 PA3 AltView

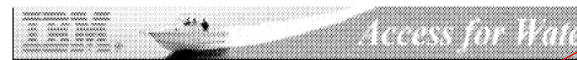
HATS LE

Task Oriented...Not Function Oriented



Services

[See boat details - 5250](#)
[See boat details - HATS LE](#)
[See boat details - WebFacing](#)
[See boat details - Host Publisher](#)
[View available boats](#)
[Order a boat](#)
[Work with invoices](#)
[Check messages](#)
[Check system messages](#)
[Administrator tasks](#)
[Manage incoming items](#)
[Monitor jobs](#)



To Joe Customer
 1234 Beach Street
 Hometown, CA 12345
 Date Thursday, June 13, 2002
 Invoice No. 9876543
 Payment Due Monday, July 15, 2002

Description	Part No.	Quantity		
Hunter 33.5	004356	1		
Boat trailer	199234	1		
Boat anchor	043993	1	FREE	\$0.00

Selected 'work with invoices'

Requested PDF output

Can now attach to an email and send

Subtotal \$59,700.00
 Tax 7.00%
 TOTAL \$63,879.00

You can try iSeries Access for Web, HATS LE, WebFacing...

Access the following web site through your browser:

- <http://iseriesd.dfw.ibm.com/webaccess/iWAHome> (case sensitive)
- This is a Marketing machine in Dallas - DEMOnet

Use the following User ID and password to sign into the EXPERIENCED USER page:

- User ID of WUSER
- Password of GUEST1 (a one, not an L)

This shows the basic look of Access for Web as we ship it. You can try various functions -- including working with printer output and the options we provide. You can click on the 5250 tab, sign onto the iSeries, then start an RPG application called BOATS and run it.

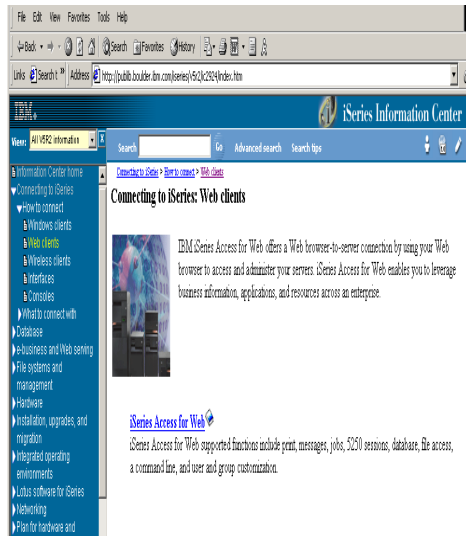
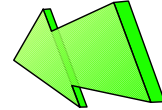
Start up a different another browser session to same url address above, and use the following User ID and password to sign into the Access for Water INEXPERIENCED USER page:

- User ID of BOATADMIN
- Password of ADMIN1BOAT (a one, not an L)

This is an example of how a customer might design a web page for their use. You will see that an end user could start the same BOATS application by clicking on the 5250 session -- or if they had used WebFacing or Host Publisher they could run the application with them. So click on all 3 links and see the same application in different views. You will also see other links that would let a user work with spoolfile information, work with IFS, run database requests, etc..

Reference Material

Can get to all documents from iSeries Access web page
www.ibm.com/eserver/series/access/web



■ iSeries Access for Web, Version 5, SC41-5518

- Setup and Installation information
- Users Guide

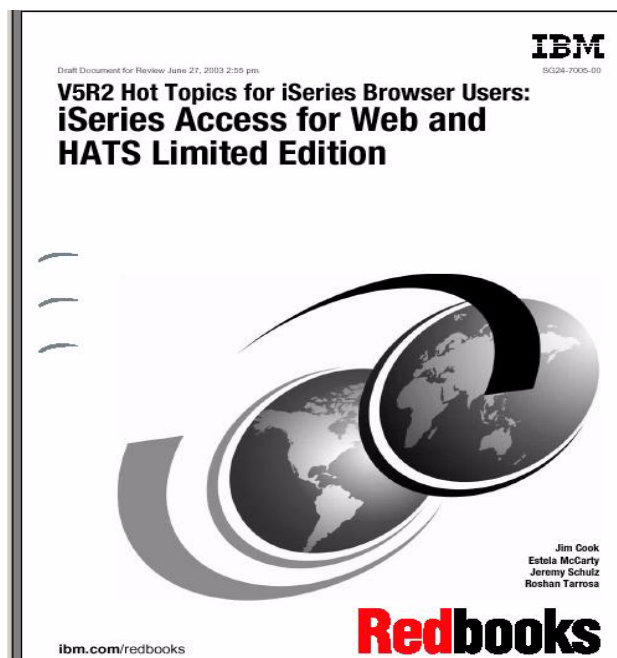
■ URL Interfaces to iSeries Access for Web

- Sample Code and examples on how to build links to directly access iSeries Access for Web functions and your other programs

Redbook

New Redbook...
SG24-7005-00

Download it from iSeries
 Access Web page at
www.ibm.com/eserver/series/access



iSeries Access for Web and HATS Limited Edition: V5R2 Hot Topics for IBM iSeries Browser Users

Among the IBM iSeries hot topics for 2003 is expediting the transition of existing 5250-based iSeries applications to e-business, Web-based network environments. This IBM Redbook targets those who want to use Web interfaces to access iSeries resources and run 5250 applications. It focuses on iSeries Access for Web and the Host Access Transformation Server Limited Edition (HATS LE). HATS LE is the unique iSeries-only version of the Host Access Transformation Server V4, a product in the IBM Host Integration Solutions set of products.

This redbook demonstrates how easily you can bring 5250-based applications to the Web using iSeries Access for Web and HATS LE. You learn how to install, configure, and customize the browser-based capabilities of these products. These include the required Hypertext Transfer Protocol (HTTP) server and IBM WebSphere Application Server Version 5 products for iSeries.

Examples show how to use various iSeries Access for Web functions and capabilities particularly for V5R2. Such functions include using Structured Query Language (SQL) to access OS/400 database tables and working with jobs, printer output, and system message queues.

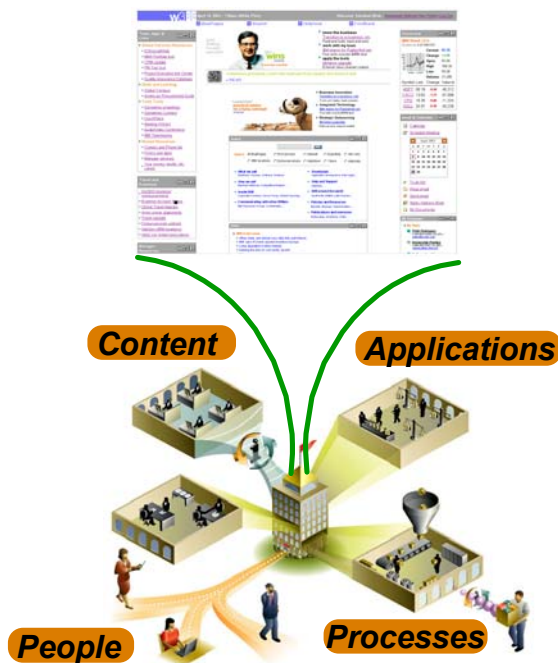
Later, you see examples of linking between iSeries Access for Web, HATS LE, and IBM WebSphere Development Studio Client WebFacing applications. You also see a comparison of several IBM 5250 refacing tools. You gain helpful troubleshooting information and tips. Plus you can review a feature comparison between iSeries Access for Web and HATS LE application functions.

Table of Contents

- Chapter 1. Introduction to iSeries Access for Web and HATS LE
- Chapter 2. iSeries Access for Web
- Chapter 3. WebSphere HATS LE V4
- Chapter 4. Comparison with other IBM Web-enablement products, tools
- Chapter 5. Product integration
- Chapter 6. Troubleshooting and tips
- Appendix A. Feature comparison between iSeries Access for Web and iSeries Access for Windows
- Appendix B. Coming attractions for iSeries Access for Web and HATS LE

Redbook [//www.ibm.com/servers/eserver/series/access/web/](http://www.ibm.com/servers/eserver/series/access/web/)

IBM Portal Solutions



WebSphere Portal - Express & Express Plus for Multiplatforms V5.02

iSeries-specific offerings

Flexible portal licensing (per-user OR per-cpu pricing)

- Both per-user & per-cpu pricing can be used on Intranets, Extranets & Internet
- iSeries Enterprise Edition for i825/870/890 includes 20 per-user licenses of Plus

Simplified portal installation & set-up with wizards

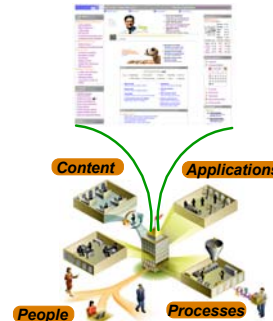
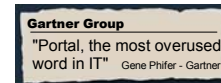
- Portal image included in Virtual Media Image (VMI) for easy installation
- Easy-to-use wizard gives you a production-ready portal server

New integrated portal function

- Document management - store, categorize, search, subscribe, review and approve
- Productivity components - view/edit documents, spread sheets and presentations
- Collaboration Center in WebSphere Portal - Express Plus

Simplified portal administration

- Intuitive interface and fewer steps required for frequently used functions such as adding a user and assigning access privileges



Available for iSeries

- eGA December 4, 2003
- GA December 19, 2003

Notes: Announcement

IBM WebSphere Portal — Express for Multiplatforms now supports IBM iSeries

IBM United States Software Announcement 203-310
November 18, 2003

WebSphere Portal — Express provides a single unified workspace in which your employees, trading partners, and customers can easily find and use the applications and information that they need. Its features include the following:

- Presentation services that let you customize a portal user interface customized to match your needs. You can also configure your portal to present content on different device types, such as laptops and mobile phones.
- Connectivity services that provide you with access to company data, syndicated content, or other external sources, such as your trading partner's applications.
- An end-user friendly interface that allows portal users to select which applications they view and how they wish to view them.
- A portlet API that lets you easily extend portlet function to add new function, applications, and data sources to your portal.
- A facility for sharing documents across your portal community.

Share documents within your portal community

- The document manager is a new set of portlets, with WebSphere Portal — Express, that provides a means for portal users to share, organize, and edit files of all types ranging from documents to spreadsheets within the portal community. Portal users can view, add, delete, and modify documents. A built-in function allows editing of a variety of file formats. You can also use the editor of your choice to modify a document. Additional features include category subscription services, a simple approval process for file contribution, automatic dialog boxes for contributing metadata, integrated search capability, versioning so that users can track the evolution of a piece of content, and access control for managing viewing privileges of different content items. WebSphere Portal — Express' portal document manager provides a cost-effective approach to maximizing the effective use of the intellectual property inherent in your documents by making them more accessible to those that need the information.

Key Prerequisites

IBM-compatible PC with one of the following operating systems:

- Microsoft™ Windows™ 2000 Server or Advanced Server with SP2 or SP3
- Red Hat Linux 8.0 or Red Hat Linux Advanced Server 2.1
- SuSE Linux 7.3 or SuSE Linux SLES 7 or 8

iSeries with the following operating system:

- OS/400® V5R2

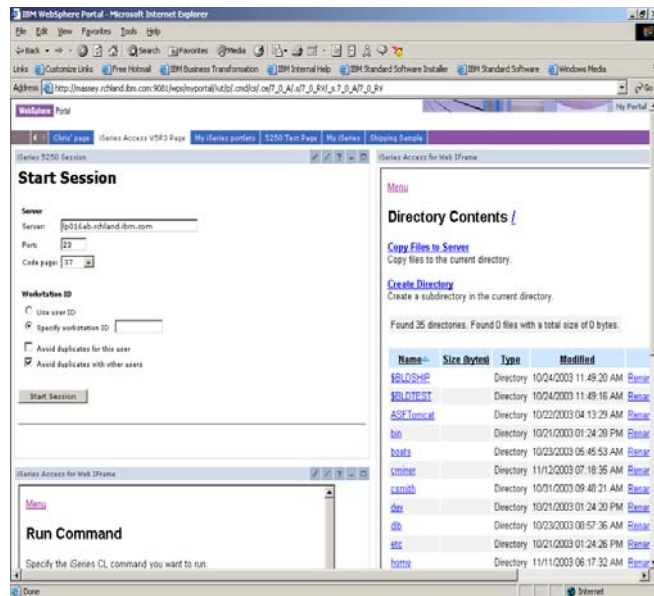
Planned Availability Dates:

December 4, 2003: Electronic software delivery
December 19, 2003: Media and documentation

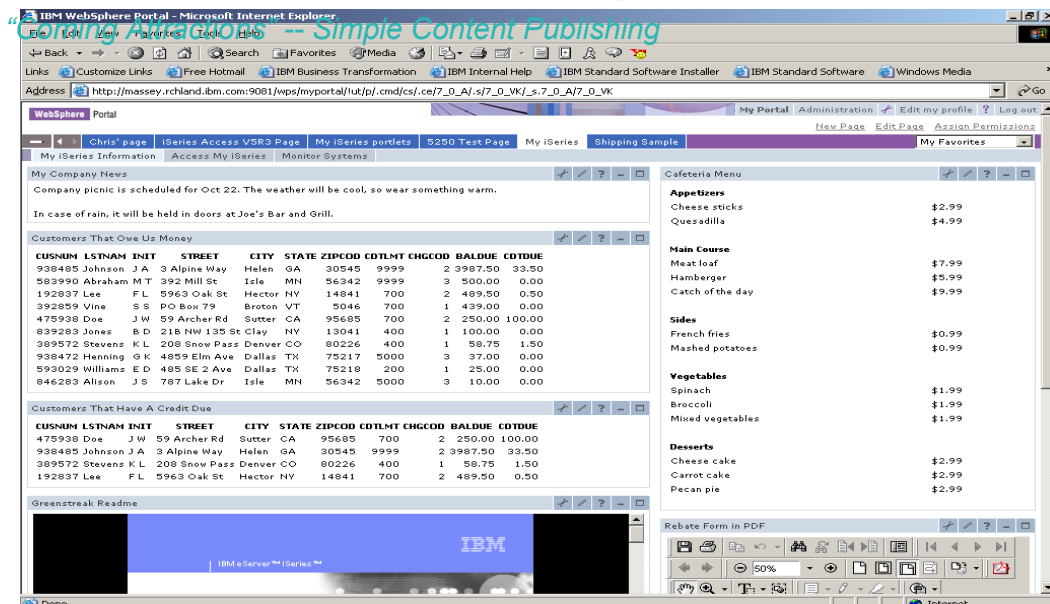
Access for Web runs in Portal...

Support for WebSphere Portal for iSeries

- New in the beta, Access for Web can now run as a portlet when using the WebSphere Portal for iSeries product on your iSeries.
- 5250 emulation can run in a portlet window
- Other functions of Access for Web can individually be assigned to a portlet window as well.
 - For example, one might have the 'Database' function in one window and 'Print' function in another windows



iSeries Access for Web running in a portal...





Summary

Who will benefit from iSeries Access for Web?

- Any iSeries customer -- **with any hardware model** - can quickly get started working in a Web environment
 - ▶ If your system is not capable of running WAS, you can easily install the ASF Tomcat web application server. ASF Tomcat runs on hardware with 70 CPW and 256 MB memory
- Any iSeries customer -- **with little Web experience** - can easily get started working in a Web environment
 - ▶ iSeries Access for Web is simple to install and configure
 - ▶ There is no programming skills required to set it up
- Any iSeries customer -- **with no training or setup on users' desktops** - can extend the reach of iSeries resources to your end users
 - ▶ Use customize facility to set up view ('window') to iSeries and to control access to various iSeries resources
 - all built around OS/400 user profiles
 - ▶ Uses standard HTML, uses existing HTTP/HTTPS ports

*A great
first step
to get
your
iSeries
into
e-business*

Trademarks and Disclaimers

© IBM Corporation 1994-2003. All rights reserved.

References in this document to IBM products or services do not imply that IBM intends to make them available in every country.

The following terms are trademarks or registered trademarks of International Business Machines Corporation in the United States, other countries, or both:

Instruction: Refer to the following URL: <http://w3.ibm.com/legal/ipl/wts>. Edit the list below, IBM subsidiary statement, and special attribution companies which follow so they coincide with your presentation.

AS/400
AS/400e
eServer


e-business on demand
IBM
IBM (logo)
iSeries

OS/400

Lotus and SmartSuite are trademarks of Lotus Development Corporation and/or IBM Corporation in the United States, other countries, or both.

Instruction: For a complete list of Lotus/IBM trademarks, see www.lotus.com/lotus/information.nsf/firstpages/copyright and edit the above statements to coincide with your presentation.

MMX, Pentium, and ProShare are trademarks or registered trademarks of Intel Corporation in the United States, other countries, or both.

Microsoft and Windows NT are registered trademarks of Microsoft Corporation in the United States, other countries, or both.

Java and all Java-based trademarks are trademarks of Sun Microsystems, Inc. in the United States, other countries, or both.

SET and the SET Logo are trademarks owned by SET Secure Electronic Transaction LLC.

C-bus is a trademark of Corollary, Inc. in the United States, other countries, or both.

UNIX is a registered trademark of The Open Group in the United States and other countries.

Other company, product or service names may be trademarks or service marks of others.

Information is provided "AS IS" without warranty of any kind.

All customer examples described are presented as illustrations of how those customers have used IBM products and the results they may have achieved. Actual environmental costs and performance characteristics may vary by customer.

Information concerning non-IBM products was obtained from a supplier of these products, published announcement material, or other publicly available sources and does not constitute an endorsement of such products by IBM. Sources for non-IBM list prices and performance numbers are taken from publicly available information, including vendor announcements and vendor worldwide homepages. IBM has not tested these products and cannot confirm the accuracy of performance, capability, or any other claims related to non-IBM products. Questions on the capability of non-IBM products should be addressed to the supplier of those products.

All statements regarding IBM future direction and intent are subject to change or withdrawal without notice, and represent goals and objectives only. Contact your local IBM office or IBM authorized reseller for the full text of the specific Statement of Direction.

Some information addresses anticipated future capabilities. Such information is not intended as a definitive statement of a commitment to specific levels of performance, function or delivery schedules with respect to any future products. Such commitments are only made in IBM product announcements. The information is presented here to communicate IBM's current investment and development activities as a good faith effort to help with our customers' future planning.

Performance is based on measurements and projections using standard IBM benchmarks in a controlled environment. The actual throughput or performance that any user will experience will vary depending upon considerations such as the amount of multiprogramming in the user's job stream, the I/O configuration, the storage configuration, and the workload processed. Therefore, no assurance can be given that an individual user will achieve throughput or performance improvements equivalent to the ratios stated here.

Photographs shown are of engineering prototypes. Changes may be incorporated in production models.