

Session ID: 403781

Introduction to VisualAge for Java Enterprise Toolkit for AS/400

***Maha Masri
IBM Toronto Lab
COMMON Fall, 1999***

Agenda Keys: 23LF, 27LF, 31LF

Agenda



- Introducing *VisualAge for Java*
- Enterprise Toolkit for AS/400
- Introduction to the Lab

Packaging

VisualAge for Java 3.0

► Comes in three versions:

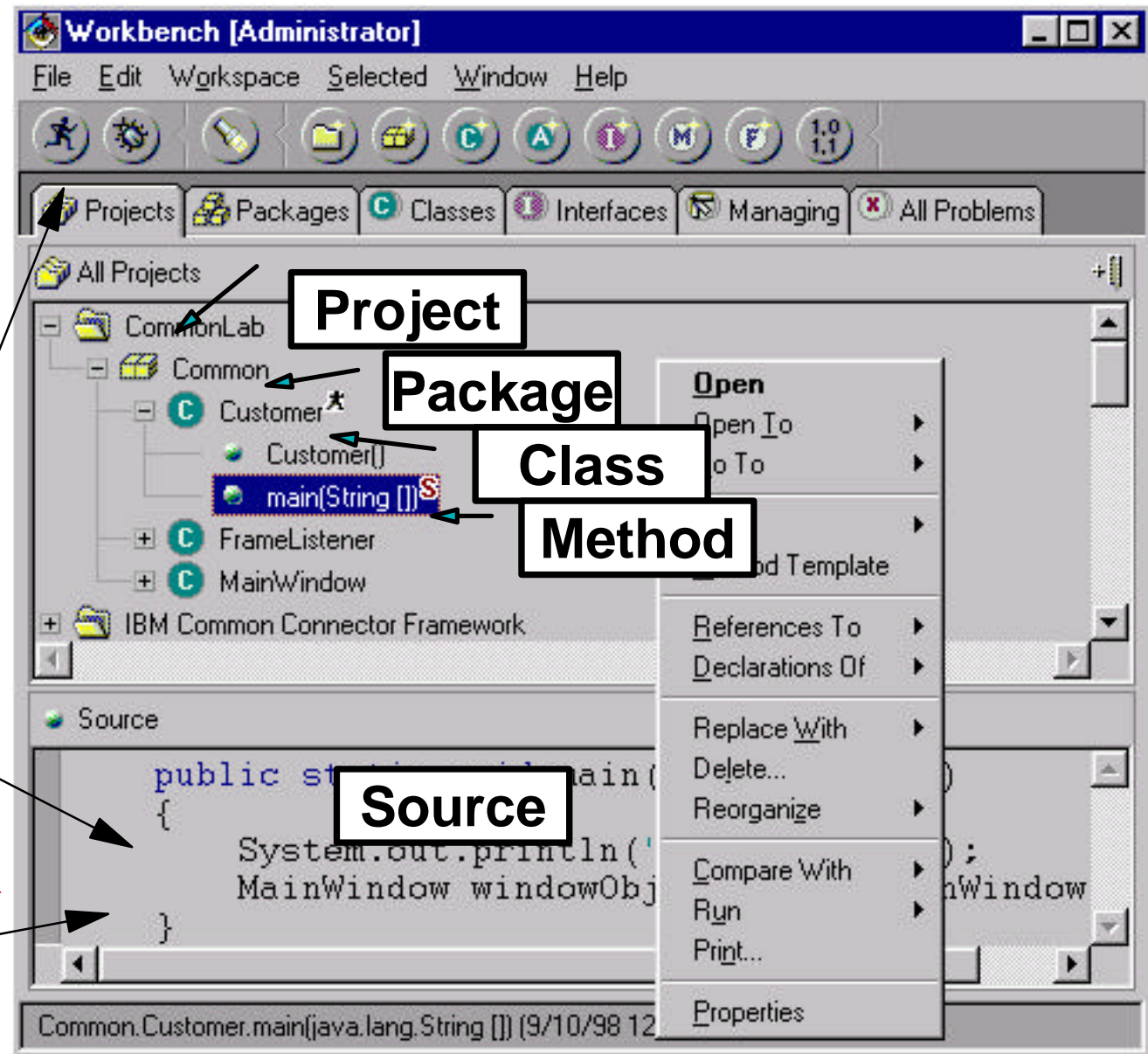
- **Entry**: Professional with 500 class limit. Free.
- **Professional**: Full IDE including version control and Visual Composition Editor
- **Enterprise**: Professional + team support + enterprise access + high performance compilers

A light blue rectangular box with a black border and a subtle drop shadow, containing the word "Entry" in black text.A light blue rectangular box with a black border and a subtle drop shadow, containing the word "Pro" in black text.A light blue rectangular box with a black border and a subtle drop shadow, containing the word "Enterprise" in black text.

www.software.ibm.com/ad/vajava

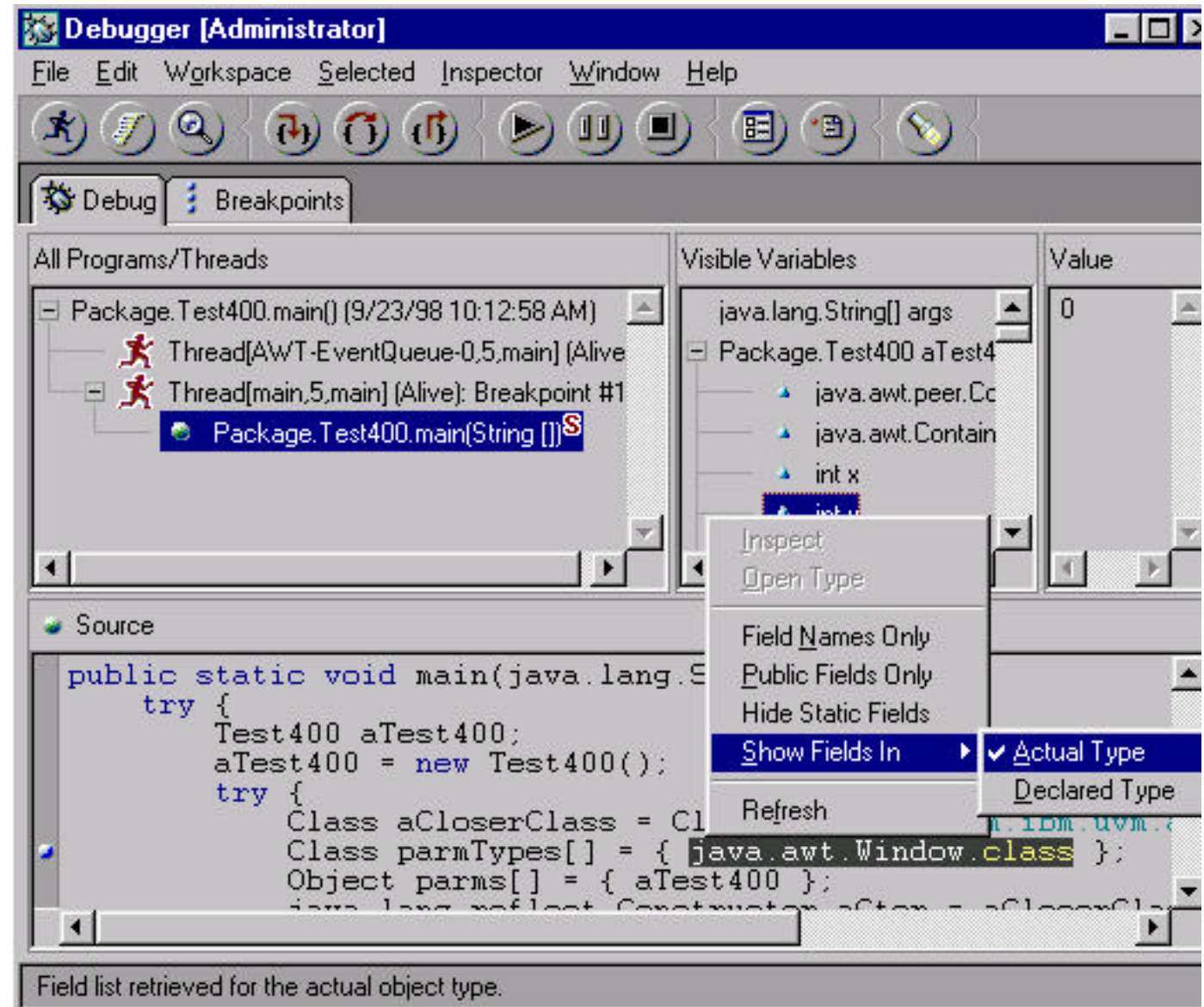
IDE

- Full function Integrated Development Environment (IDE) for Java
- Incremental compiles
 - ▶ "Code a little, test a little"
 - ▶ Edit, save
 - ▶ Run
 - ▶ Debug - set break points in editor



Built-in Debugger

Debug
within
the IDE



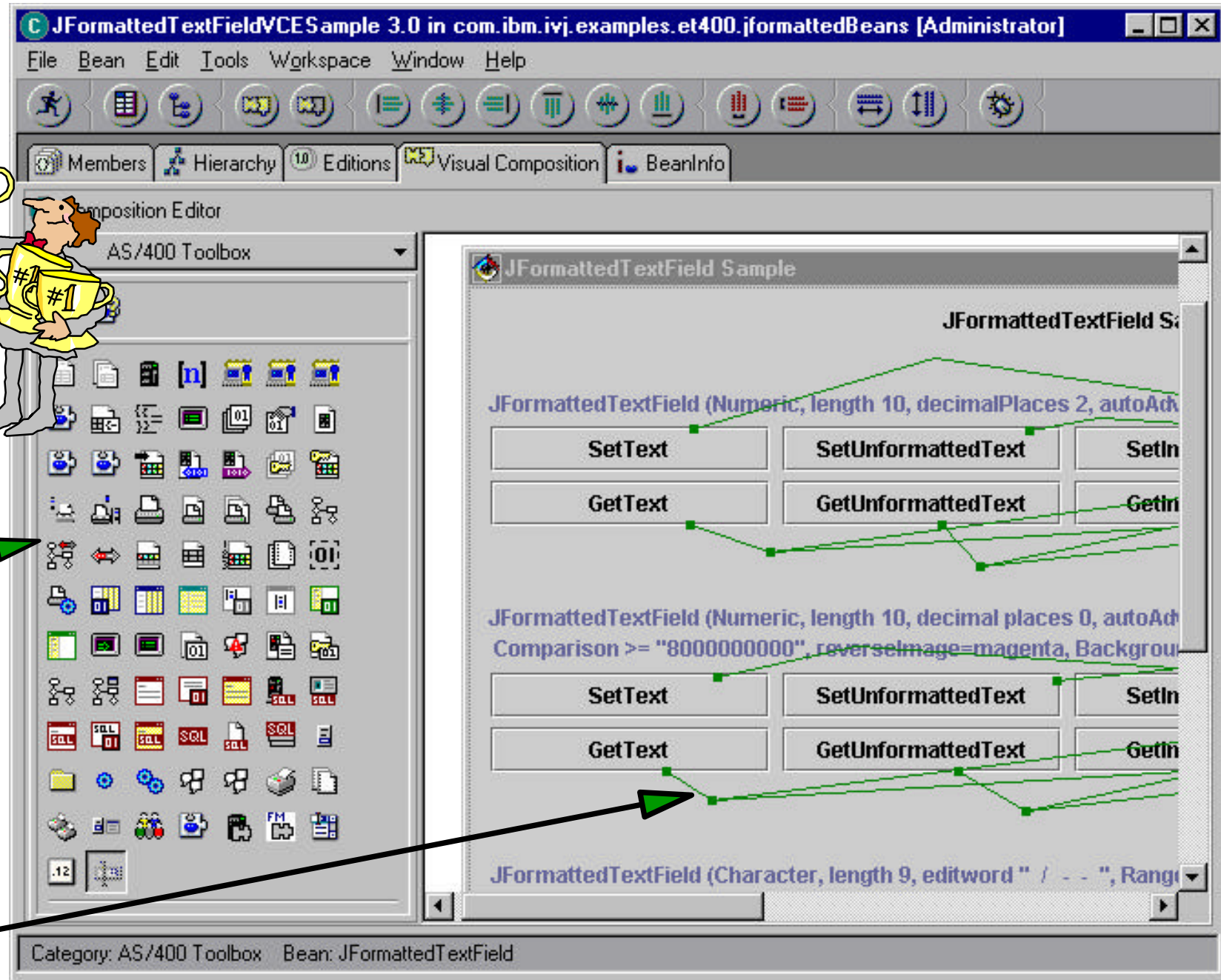
VCE Palette

Award
winning
visual
editor

AS/400
Toolbox
Palette

- Great
functionality
- Easily
accessible

Connect
Java beans
visually



Agenda

- Introducing *VisualAge for Java*
- **Enterprise Toolkit for AS/400**
- Introduction to the **Lab**

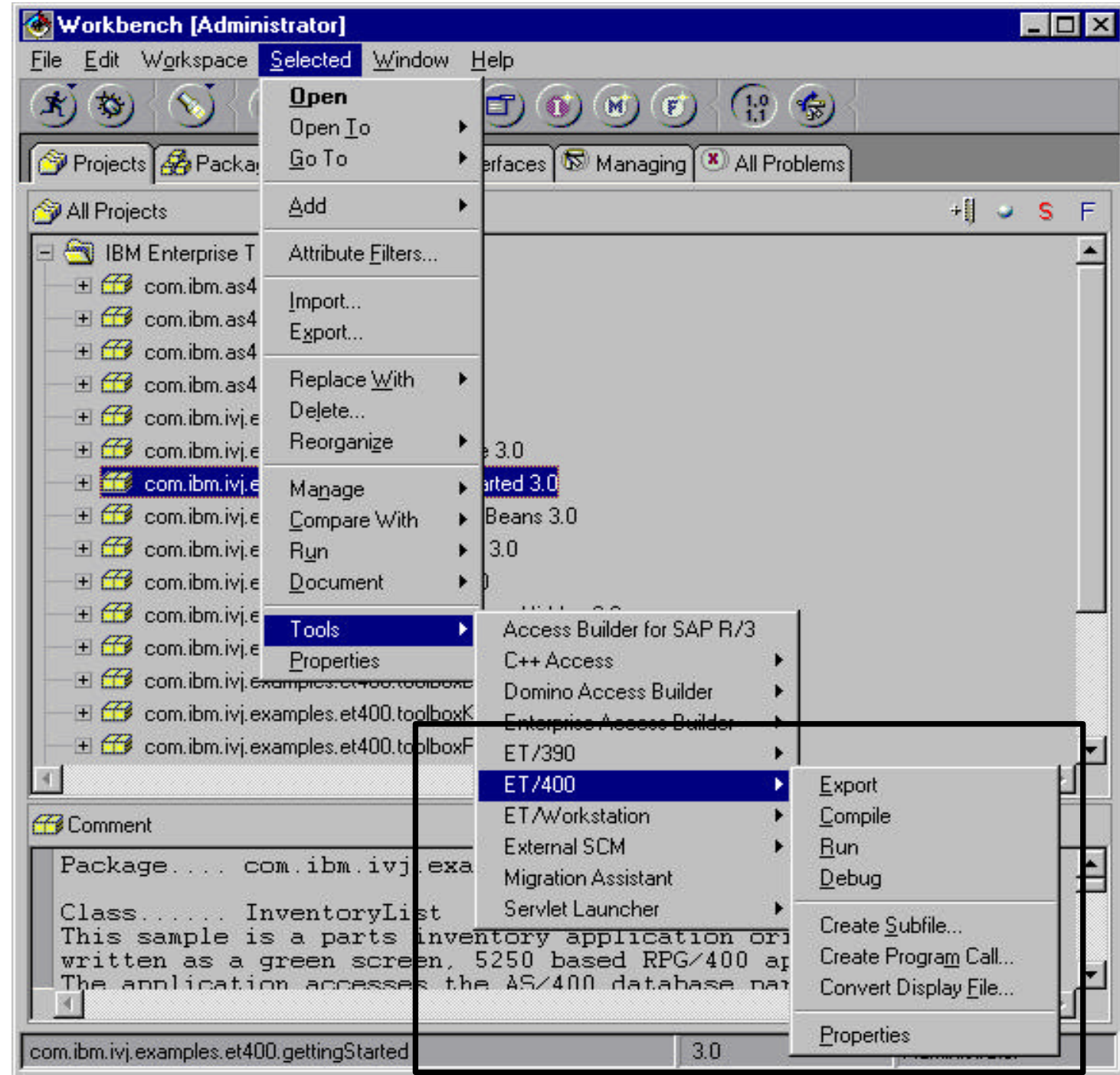


Enterprise Toolkit for AS/400

Exceptional AS/400 support 'built-in'

- Targeting AS/400 locally or remotely?
 - AS/400 Toolbox for Java classes built-in (including own palette)
 - Program Call smartguide generates code to call RPG/COBOL
- Ready to deploy to AS/400 ?
 - Export selected classes to AS/400 from within IDE
 - Remotely compile,run,debug exported classes from within IDE
 - Export/Compile/Run/Debug properties specified once, used always
- Writing AS/400 client GUI ?
 - Subfile smartguide produces fully runnable subfile! With data!
 - Display File (*DSPF) conversion converts 5250 to Java GUI
 - AS/400 entry field beans with DDS-like validity checking, editcode and editword masking
- Lots of examples, documentation

Enterprise Toolkit for AS/400



Export, Compile, Run

The screenshot illustrates the workflow for exporting, compiling, and running a Java program on an AS/400 system. It features three main windows: a menu, a file selection dialog, and a console output window.

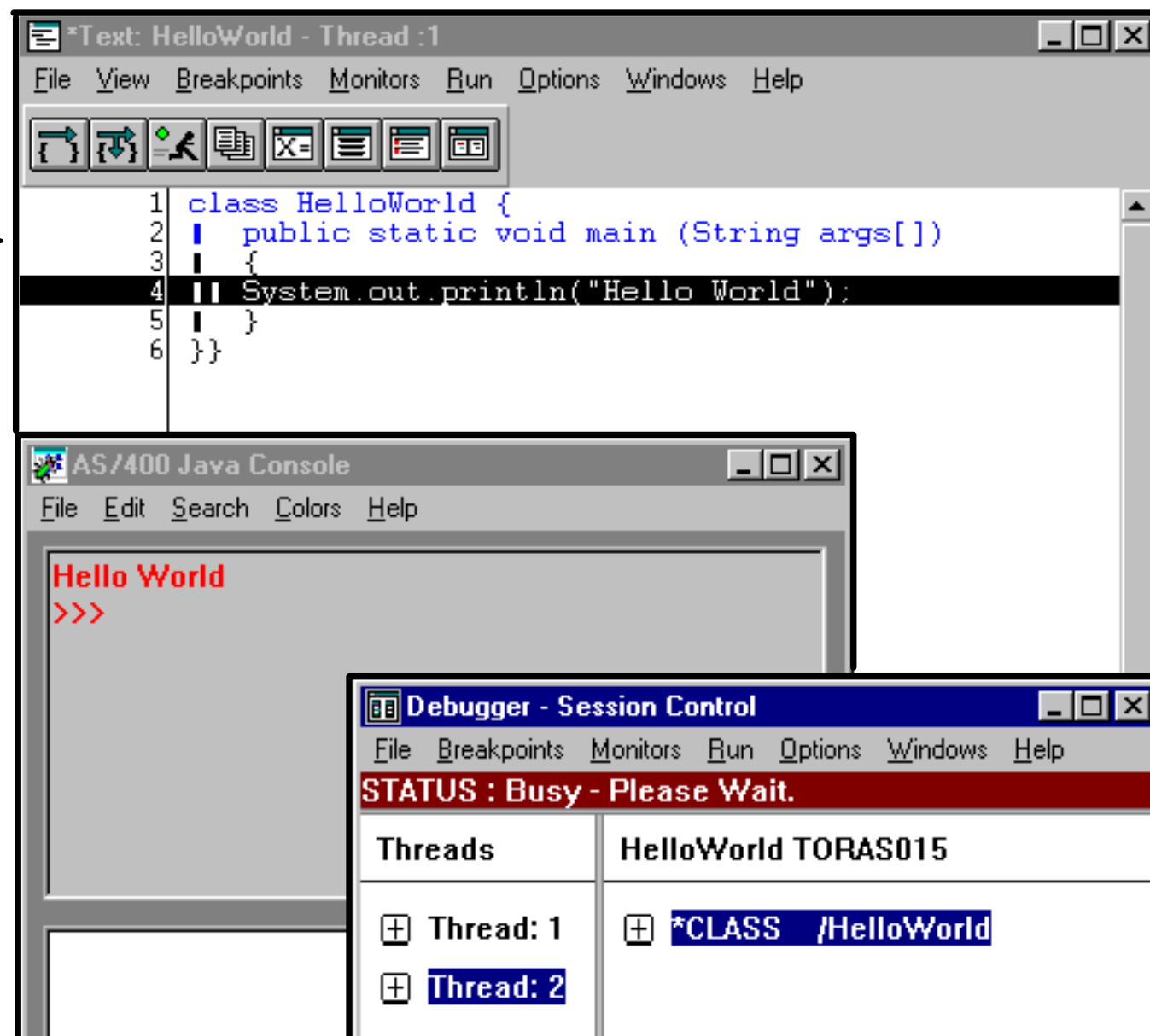
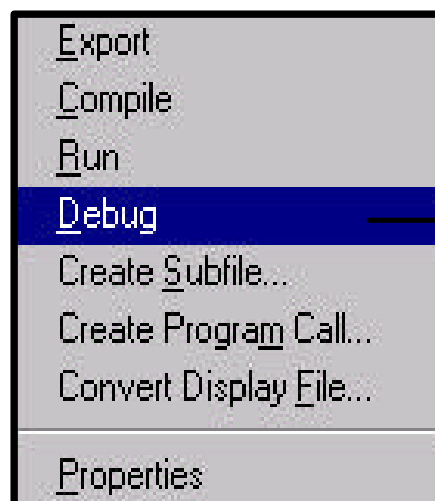
Menu: The menu is open, showing options: **Export**, **Compile**, **Run**, **Debug**, **Create Subfile...**, **Create Program Call...**, **Convert Display File...**, and **Properties**. Red arrows indicate the sequence: from **Export** to the **Select directory** dialog, from **Compile** to the **AS/400 Job Log**, and from **Run** to the **Console** window.

Select directory: This dialog box shows the current directory as **S44K3314**. The **Directory:** list includes **MvxAWapps**, **IHEMA3**, **WWWSESV**, **hellow**, **IERLA1**, and **MvxOutput**. The **Path name:** is **/** and the **Files of type:** is ******.

AS/400 Job Log: This window displays the job log for the current job. The text shows: **CRTJVAPGM CLSF(YPhil/teachme/*.**) OPTIMIZE(10) REPLACE(*YES) ENBP** and **JVAB524 : 1 Java programs created. 0 Java programs are already current. 1 J**.

Console: This window shows the output of the program. The **Standard Out** section displays **Hello world!** with a red arrow pointing to it and the text **— This is your output!**. The **Standard In** section is empty.

Cooperative Debugger



Convert Display File

SmartGuide - Convert AS/400 Display File to Java

Specify the location of the display file.

Server: TORASB5D Add/Modify...

Library: *LIBL

Expand the server to list libraries and select a display file. Select record(s) to convert.

Server

- TORASB5D
 - QSYS
 - QHLPSYS
 - QUSRSYS
 - DSPFCONV
 - "name/1"
 - ASLIT1100

R RECORD0001
R RECORD0002
S RECORDSFL
X RECORDSFLC
R HELPRECORD

Output

Part number	00007
Inventory detail	
Description	Base Unit - Auto
Quantity on hand	0000029
Model	m7
Ship date	19970815-
Picture path	c:/getstart/image

Subfile SmartGuide

SmartGuide - Create an AS/400 Subfile for a Database File [X]

Specify the location and name of the database file.

Server:

File:

Library:

Select columns to add from the possible record formats.

Record Format:

Available columns

- CHAR_A
- DATE_L
- TIME_T
- TIMESTMP_Z
- HEX_H
- PACKD_P0
- PACKD_P2
- ZONED_S0
- ZONED_S3
- BIN_4B
- BIN_5B
- FLOAT_S
- FLOAT_D

Columns to create

- CHAR_A
- DATE_L
- PACKD_P2
- ZONED_S3
- BIN_4B

Output

↓

PARTNO	PARTD
00005	Auto Antenna - perm
00006	Auto-dial Expansion
00007	Base Unit - Auto
00008	Battery Charger 12V
00009	Battery
00010	Carry Case - Deluxe
00011	Carry Case - Nylon
00012	Pager - Large Screen
00013	Flip Phone - mini

Program Call SmartGuide

SmartGuide - Create AS/400 Program Call

What would you like to do?

☐ Create a new program call class.

☐ Create a program call class from saved

Saved Settings:

☒ Create a program call class from the Stored Procedure Catalog.

Server:

Stored Procedure Catalog

- TORAS015
 - AA
 - AA
 - ASDF
 - BB
 - BB
 - CINDEREL
 - LIBRARY

Define the AS/400 program parameters

Variable Name	Data Type	Size	Decimals
partno	Character	5	
qty	Binary	6	

Select save options for SmartGuide settings.

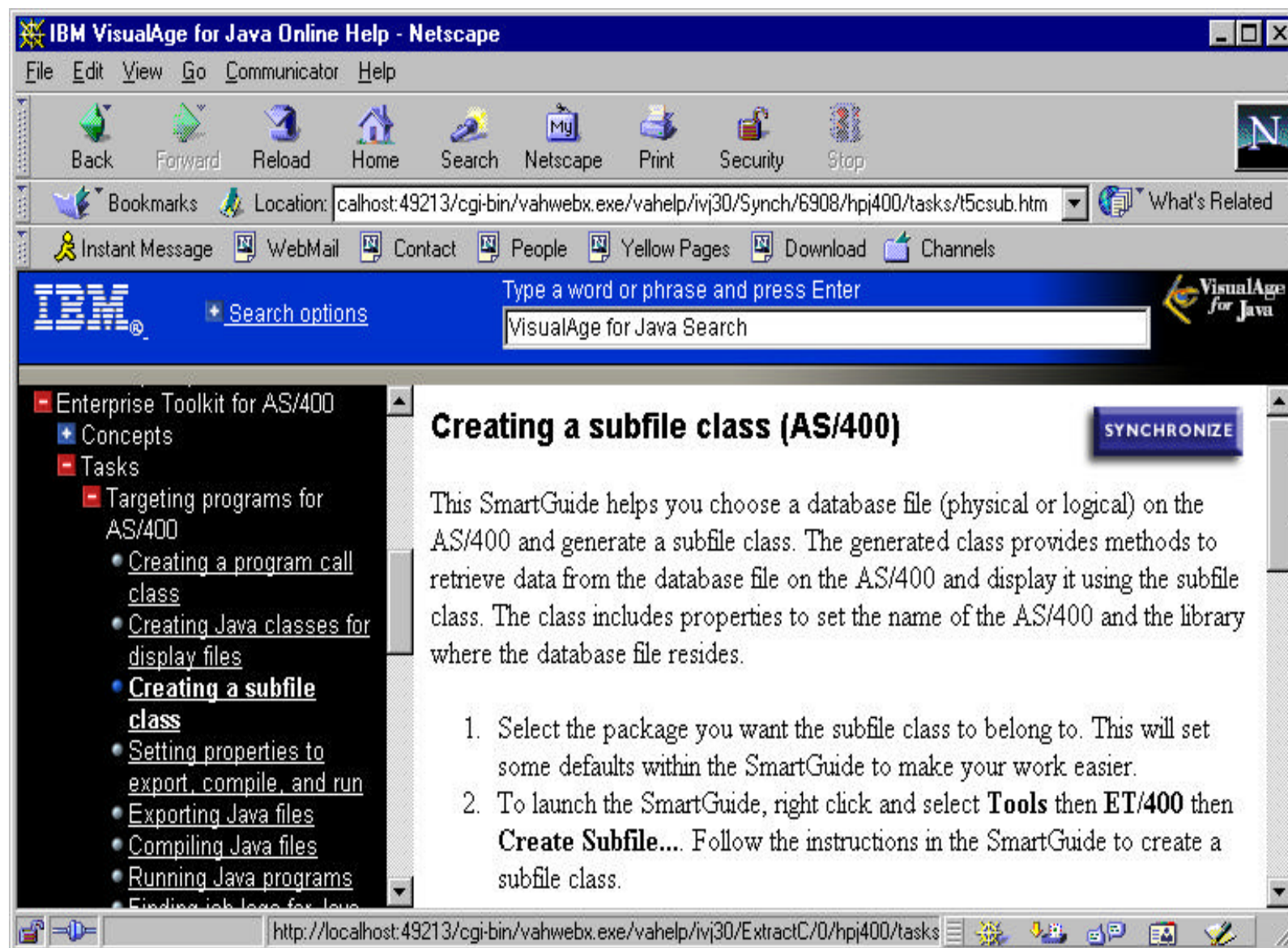
☒ Save settings locally

Save Settings as:

☐ Save settings to Stored Procedure Catalog.

AS/400 Online Help

- Integrated, HTML based
- Toolbox
- Getting Started
- Concepts
- Tasks
- Reference
- Samples
- Search



Agenda

- Introducing *VisualAge for Java*
- **Enterprise Toolkit for AS/400**
- Introduction to the **Lab**



URLs, URLs, URLs ...

● Come visit us on the Web!

► VisualAge for Java:

www.software.ibm.com/ad/vajava

www7.software.ibm.com/vad.nsf -> VisualAge Developer Domain

► AS/400 and Java:

www.as400.ibm.com/java -> Lots of great links

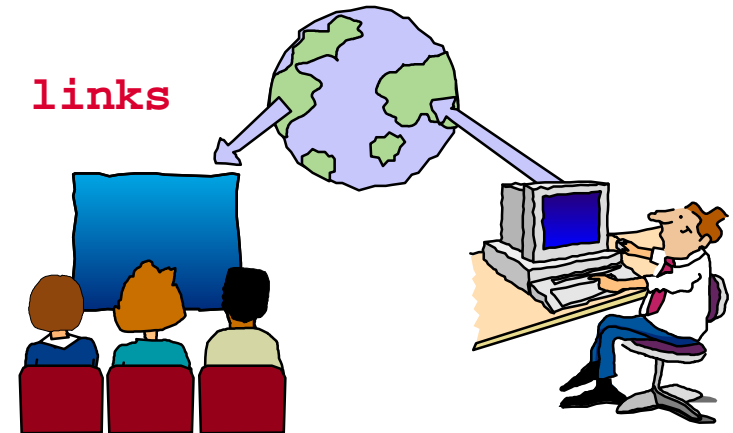
► More Java information:

www.javasoft.com

www.ibm.com/java

ncc.hursley.ibm.com/javainfo/

www.gamelan.com -> Free Java beans



● 'Java for RPG Programmers' book

www.advice.com

ISBN: 1-889671-23-1, 1998, Phil Coulthard and George Farr

● Or contact me:

masri@ca.ibm.com (416) 448-4154

Page 2-13

Before you start running the example, you may look at the help for the example.

1. Click on the Help menu on the workbench and select Samples.

Page 2-42

Populate the Part Details when the Part is Selected in the Inventory List

1. Click on the InventoryList icon on the desktop taskbar.
Right click on the PRODDTL1 bean. Select **Connect** from the pop-up menu and then select **Connectable features....**
Connect **ItemStateChanged ...**

Example of System Info (see tent card):

System Name: **S400A / S400B**

User Id: **Javaxx**

Password: **Javaxx**

Library name: **Javaxx**