

# iSeries EZ-Setup

2001 Announcements  
ITSO Technical Overview  
May 2001

**IBM** @server. For the next generation of e-business.

- V5R1 Enhancements
  - Set up Operations Console
  - Optional installation/configuration of:
    - ▶ LDAP
    - ▶ Domino
    - ▶ Web Servers
    - ▶ PM/400
    - ▶ Info Center
  - EZ-Setup is now a Client Access Express installable component:
    - ▶ Installed by the Client Access Express Install program
    - ▶ Serviced using the Client Access Express Service Pack process
    - ▶ Integrated with the Client Access Express CD Browser program



# Upgrade Requirements

CD Browser EZ-Setup option is selected to be installed over an existing Client Access Express installation

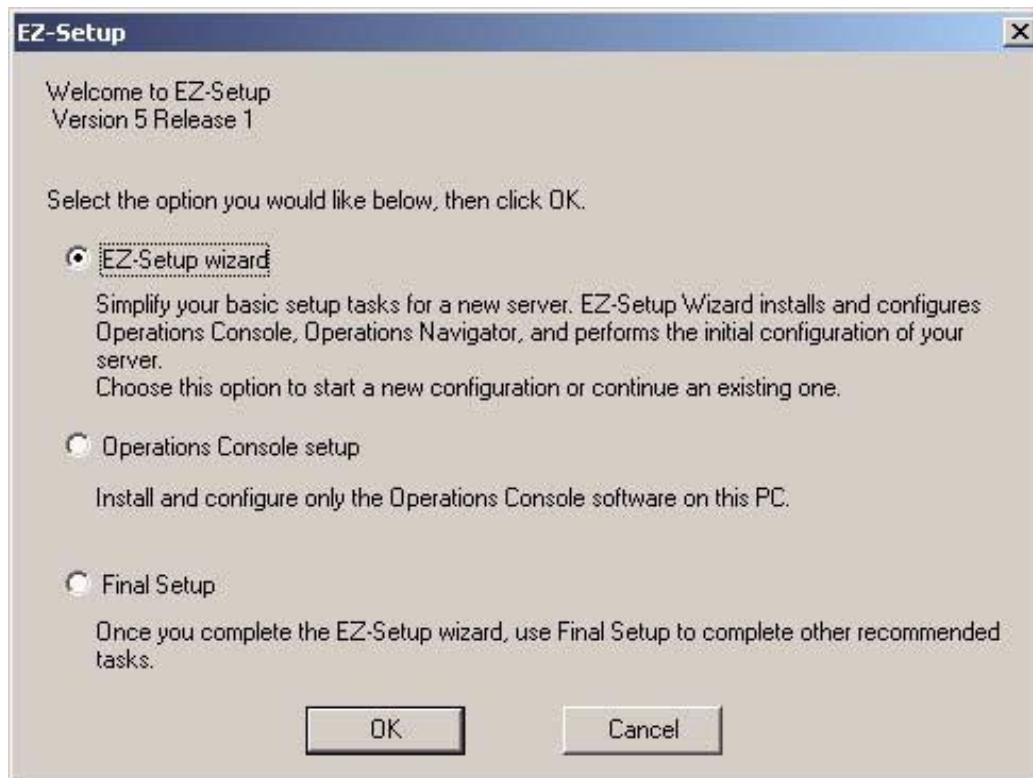
EZ-Setup and all of it's Client Access Express dependencies are already installed

Icon Installed on Desktop

Silent Install requirements

Post Install requirements

Uninstall

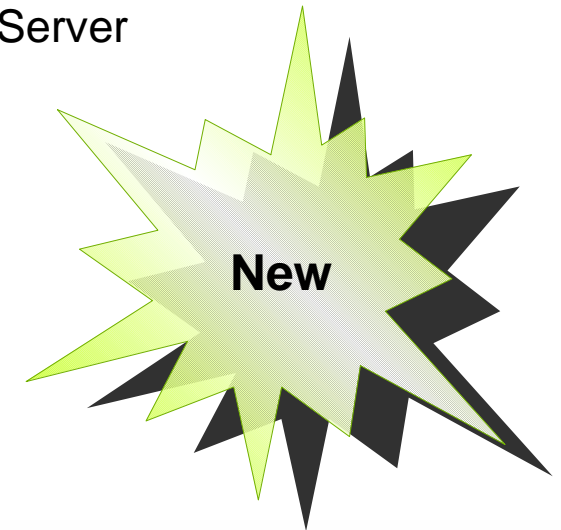


- Optionally installable component under Client Access Express
- Icon created on the PC desktop and in the Client Access Express folder



Used to initially configure

- Operations Console
- Operations Navigator
- AS/400 Server



In previous releases, EZ-Setup concentrated on basic setup tasks. In V5R1, EZ-Setup takes the user a step farther. The EZ-Setup program configures the AS/400 to be one or more of the following:

- Domino Notes server
- Internet server
- LDAP server or user of LDAP

In addition to the above tasks, EZ-Setup will present the following additional setup tasks:

- Install Information Center
- Turn on PM400

\* Note - EZ1 still requires the Operations Console cable as the only way to connect and perform the initial configuration of the AS/400. LAN Console is not supported.

## EZ-Setup wizard:

- If you choose this option and press OK, this dialog box closes and the EZ-Setup wizard starts, taking you to Screen 2 - Welcome and Introduction.

## Operations Console Setup:

- If you choose this option and press OK, this dialog box closes and the EZ-Setup wizard starts, taking you to the first panel in the Console Setup.

## Final setup:

- If you choose this option and press OK, this dialog box closes and:
  - If a supported browser is installed on the PC, the browser loads and the "Additional Setup" information is presented.
  - If no supported browser is installed, a "no supported browser" dialog is presented.

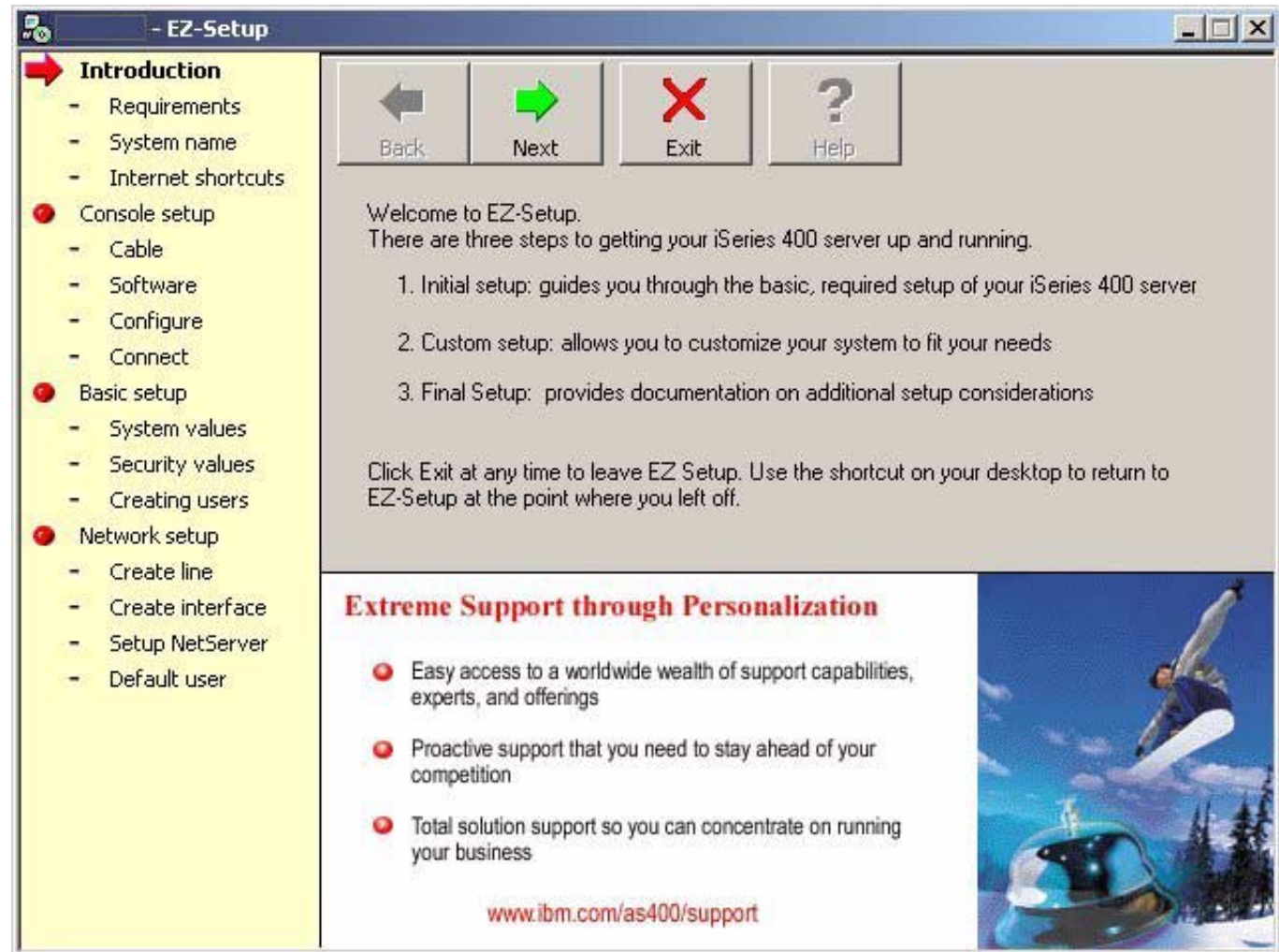
# Welcome to EZ-Setup

IBM @server iSeries

*The EZ-Setup wizard will guide you through the various steps to configure your system.*

You can choose to setup:

- Operations Console
- Operations Navigator
- AS/400 Serve
- Allows additional customization



IBM @server. For the next generation of e-business.

## Welcome to EZ-Setup:

The EZ-Setup wizard is designed to:

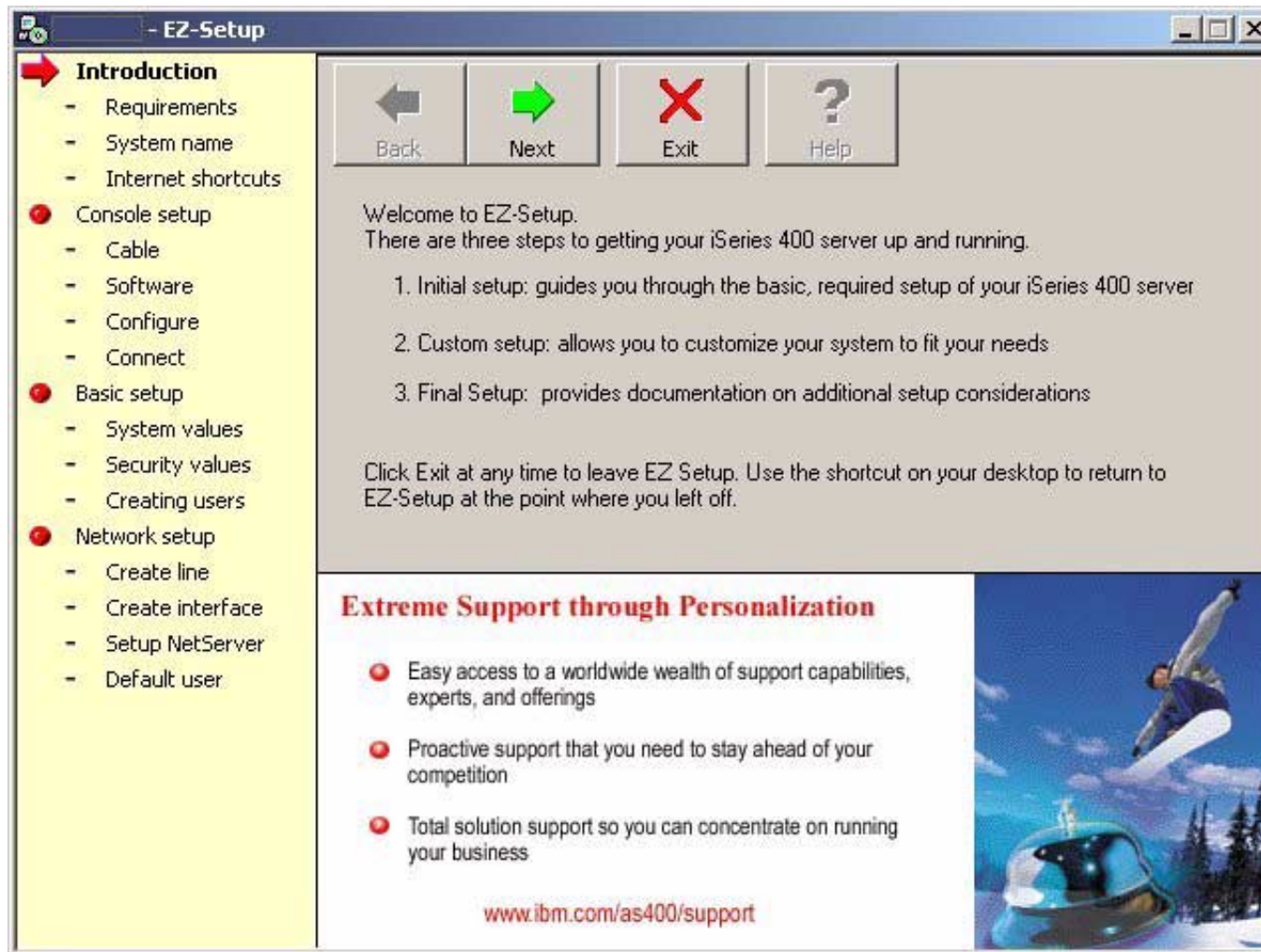
- Guide the user through the initial connection to your AS/400 over an Operations Console connection and to perform the initial configuration steps to configure your AS/400 server.
- Allow customization of your system through the EZ-Setup Customer Setup wizard
- Provide additional documentation concerning setup consideration

The basic EZ-Setup procedure includes:

- Configuring an AS/400 Operations Console Local Controlling System
- Setting system values
- Configuring security
- Creating system administration user profiles
- Configuring a connection from the AS/400 to a LAN
- Setting up a Client Access connection to the AS/400

Upon completion of the basic EZ-Setup procedure, you can optionally customize your system using the EZ-Setup Custom Setup wizard.





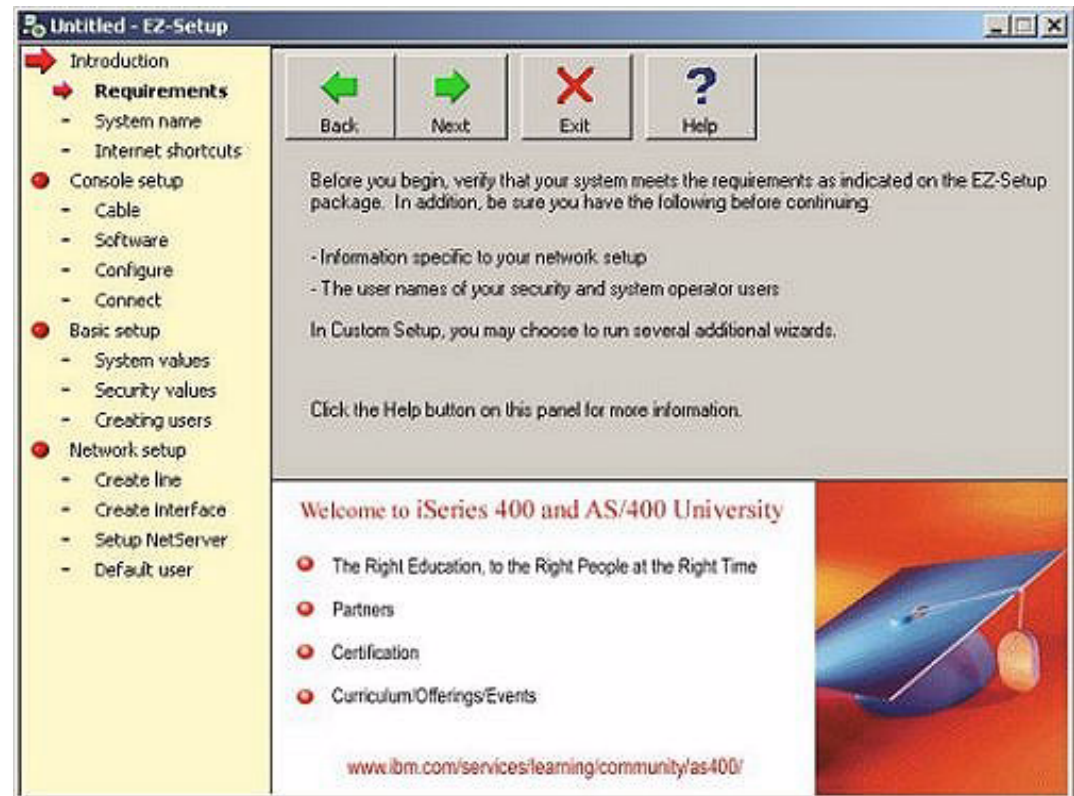
V5R1 EZ-Setup now a Client Access Express installable component:

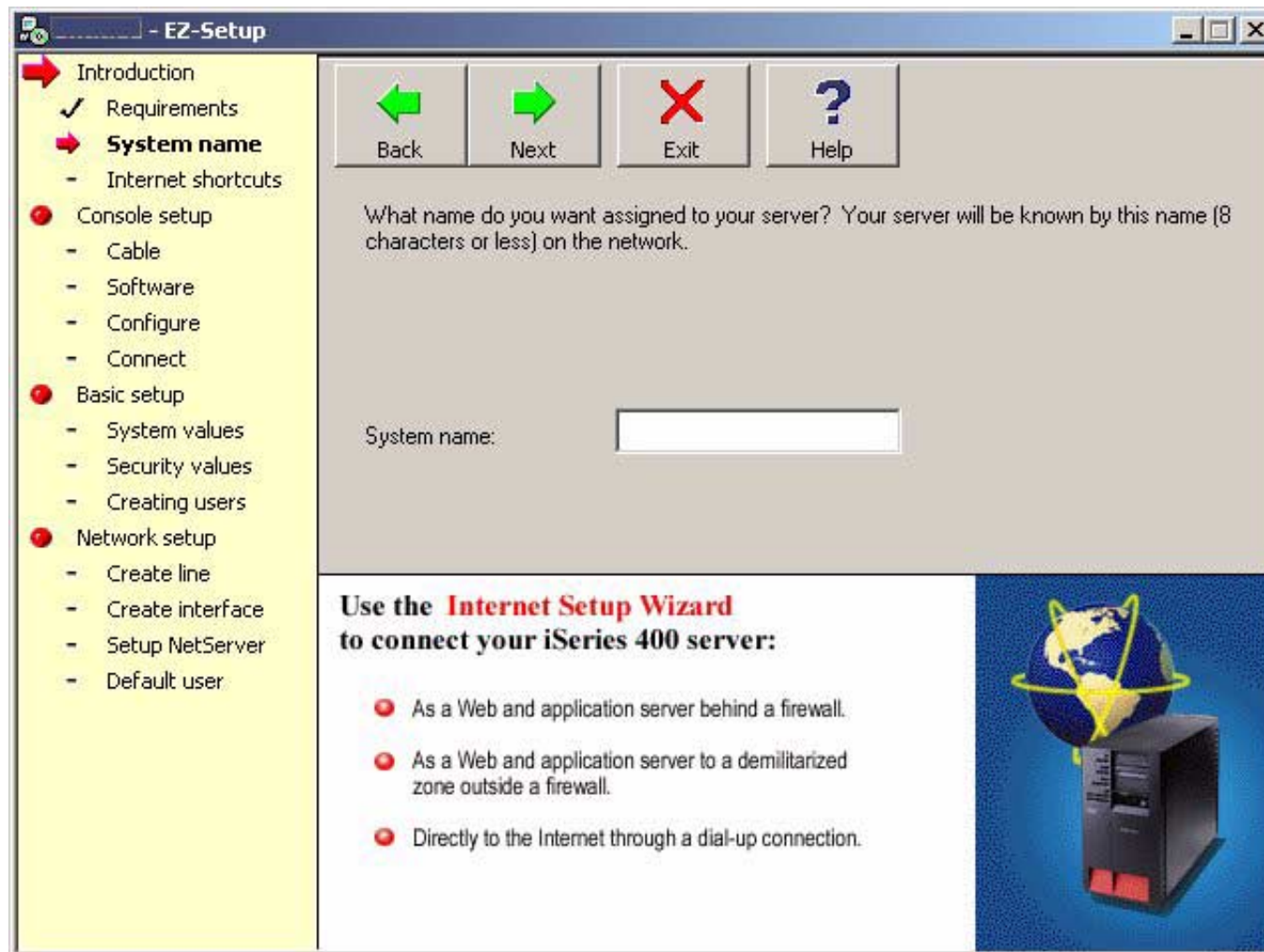
- Installed by the Client Access Express Install program
  - Selecting the EZ-Setup option off of the CD Browser screen will start the Client Access Express install wizard with a new command line parameter. That parameter will cause the install wizard to use a special installation type tailored for EZ-Setup. During that installation, the customer will not be given the chance to select Client Access Express installable components. The EZ-Setup installable component, and all of its Client Access Express component dependencies will be installed. At the end of the EZ-Setup install from the CD Browser, the Client Access Express install wizard will not prompt to show the Readme, or ask to add the Client Access Express shortcut to the desktop. The Readme will not be shown, and the Client Access Express desktop shortcut will be created by default. The install wizard will also not prompt for the customer to restart Windows. Instead, a dialog will be presented telling the customer that all Client Access Express components required to start the EZ-Setup wizard have been installed. The customer will press the Next push button on the dialog to start the EZ-Setup prereq checking program, and end the Client Access Express install wizard. The EZ-Setup prereq checking program will verify that all prereqs for the EZ-Setup wizard are present on the PC. If not, instructions for installing or configuring the prereqs will be presented to the customer. After it is determined that the PC is ready to run EZ-Setup, the EZ-Setup prereq checking program will prompt the customer to restart Windows to begin EZ-Setup.
  - EZ-Setup as a Client Access Express installable component will not be part of a PC5250 User, a Typical, or a Full Client Access Express install. However, EZ-Setup will be installable as a selectable component of Client Access Express during a Custom install, or Selective Setup. When EZ-Setup is installed through the Client Access Express install wizard's Custom install interface, or Selective Setup, the install will end with a dialog appearing after the dialog that prompts for the Readme and the desktop shortcut. It will state that all Client Access Express components required for EZSetup have been installed. That dialog will also have two radio button options to let the customer choose whether they wish to run EZ-Setup at that time, or after Windows is restarted (the default selection will be to start EZ-Setup at that time).
- Serviced using the Client Access Express Service Pack process
- Integrated with the Client Access Express CD Browser program

# Required Information

You may need certain pieces of information to successfully set up your system such as:

- Server name
- Host and Domain name
- Network IP address
- Type of LAN connection
- Transmission speed
- Gateway addresses
- PC requirements
- DNS address
- Dial-Up Networking Upgrade
  - For Windows NT
  - For Windows 95
    - ▶ For Windows 95 OEM Service Release version 2.0 or higher and Windows 98
    - ▶ Windows ME does not need to upgrade Dial-Up Networking. If you have uninstalled it, you will have to reinstall it before running EZ-Setup.

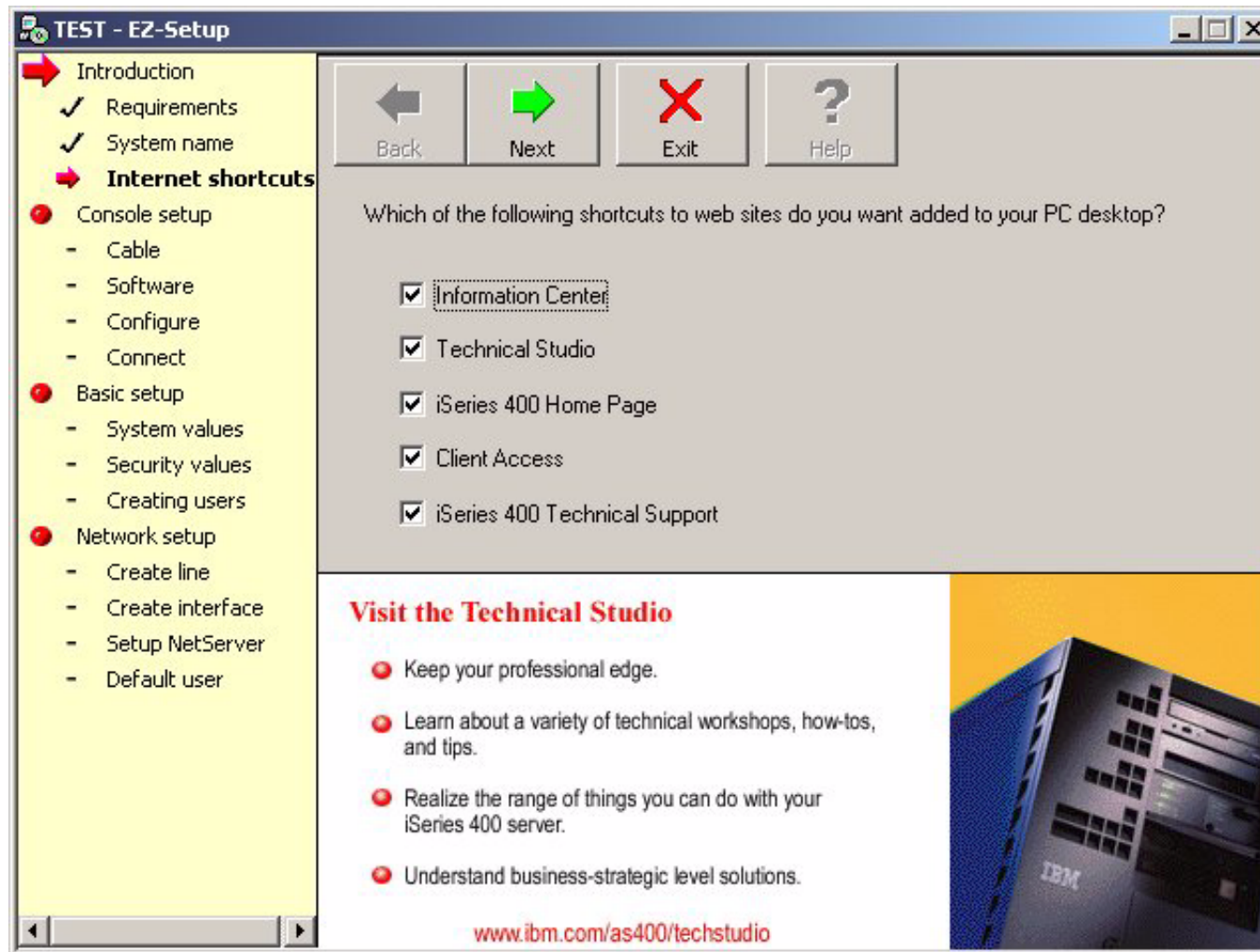




**System/Server name** - The system name may contain up to 8 alphanumeric characters (A-Z, 0-9). Choosing a system name can be as simple or as complex as you choose to make it. The only essential characteristic is that it be unique from any other systems in your organization. However, keep in mind that it will probably be convenient for the name you choose to reflect the intended purpose of the system. The point is to pick a name that is easy to remember and that serves your needs. The EZSetup Wizard logs all changes to your system in a file which by default is,

- C:\Program Files\IBM\Client Access\EZSETUP\YOURSYSTEMNAME.log

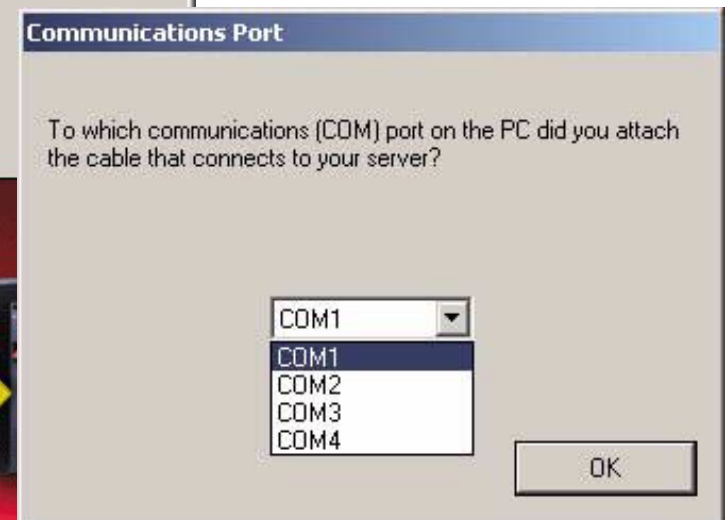
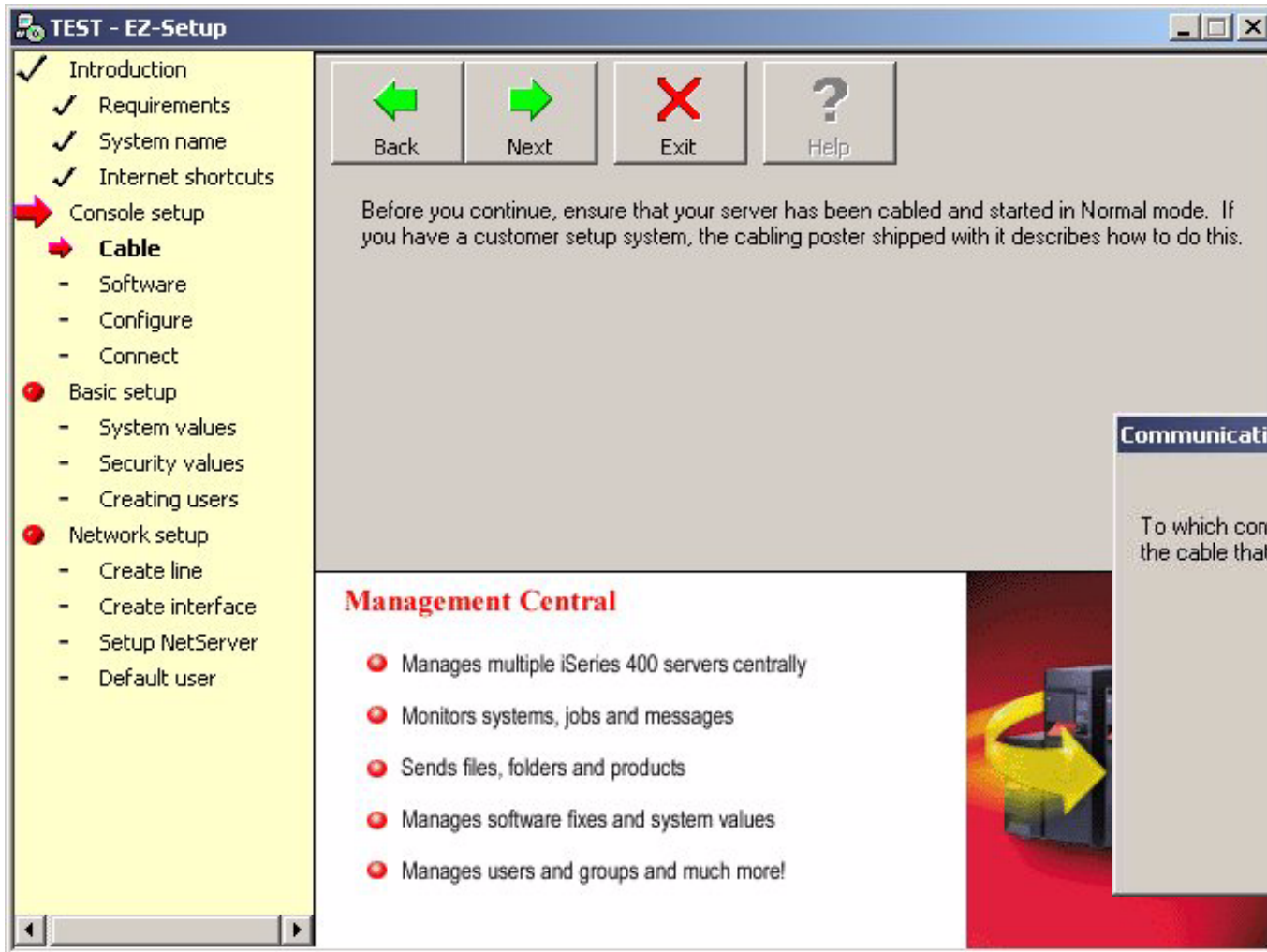
This can be changed to suit your system administration.



**Internet Shortcuts** - Shortcuts to useful URLs can be added to your PC desktop for quick reference. The user has the option to add them or deselect and not add them.

- Information Center
- Technical Studio
- iSeries 400 Homepage
- Client Access
- iSeries 400 Technical Support

# Console Setup - Cable





**Console Setup - Cable** - This screen prompts the user to ensure that the system has been cabled correctly and started in Normal Mode. A cabling diagram can be found on the cabling poster shipped with the system.

- You are prompted to select which COM port your cable is connected.
- If your system is not connected correctly, the following message will appear:
  - EZ1084 - EZ-Setup was unable to detect which PC communications (COM) port is connected to the system. Press F1 for more information.
  - Pressing F1 will generate the following help text:

Asynchronous Connection Failed

EZ-Setup uses Client Access Express to connect with your server. There was an error while attempting to make this connection. There are many things that could prevent this connection. Below is a checklist of things to do that may correct the problem.

- Restart your PC.
- If you are using Windows NT, reinstall Service Pack 3.
- Check to see if TCP/IP is installed on your PC.
- Perform a Normal IPL (reboot) on your server. If your server is in the process of a reboot, EZ-Setup may not work until the process has completed.
- Ensure that the Operations Console cable is attached to the correct ports.
- Set Operation Console as your default

If this does not fix the problem, call your nearest IBM service representative or customer engineer.

**Specify Host and Domain Name** - This panel asks you to specify a host name and a domain name. The host name is often the same as the system name. Together these help define the TCP/IP properties that can be configured. These names are used by the Domain Name System. You must enter a host and domain name in order to continue with your setup and configure TCP/IP. If you are connecting to an existing TCP/IP network, the network administrator will need to supply values for the host name and domain name.

The server host name identifies the specific machine within a network of computers. The rules for host and domain names are the following:

- Any letter (A through Z).
- Any number (0 through 9).
- Underline ( \_ )
- Hyphen or minus sign ( - )
- The name can be a maximum of 63 characters long.
- The first and last character must be a letter or number.
- Blanks cannot be used.

The domain name allows a meaningful name (such as a company name or abbreviation) to be used for addressing purposes rather than the long 32 bit TCP/IP address. There may be a number of hosts within any domain.

**Network IP address** - The IP address is a set of four numbers that provide information about the size of your network and the network address of your server. An Internet address helps differentiate smaller networks that connect individual computers from massive networks that connect smaller subnetworks.

**Type of LAN connection** - Every computer connected to your LAN is physically connected to it by a piece of hardware called a LAN adapter card. You need to know what type of LAN adapter card you are using so that EZ-Setup can create a line description for it. EZ-Setup supports both token-ring and Ethernet networks. After you create a line description for the adapter card, you will initiate the TCP/IP network protocol and configure the protocol to run on the adapter.

**Transmission speed** - The speed at which data can be sent over your LAN. This value is measured in megabits per second. The possible speeds for the different types of networks will be determined by your hardware.

**Gateways** - A gateway is a computer that connects two protocols that would otherwise be incompatible. For example, you have a network that uses SNA and an office application to send and receive e-mail and a network that uses TCP/IP and SMTP to send and receive e-mail. A server that is configured with TCP/IP and SNA could act as a gateway between these two networks.

**PC requirements** - Your PC must meet some hardware and software requirements in order for EZ-Setup to run and connect to a server.

Your PC must meet the following software requirements (one or more of these operating systems):

- Windows 95 / 98 / ME
- Windows NT Workstation 4.0
- Windows 2000
- TCP/IP installed and configured

Your PC must meet the following hardware requirements:

- For Windows 95 / 98 / ME
  - Pentium 100 processor or faster
  - 64 MB RAM
  
- For Windows NT Workstation/ Windows 2000 Professional
  - Pentium 200 processor or faster
  - 96 MB RAM
  - A LAN adapter (Ethernet or Token-Ring) must be installed and configured if you want to connect to a server over a LAN upon completing the EZ-Setup wizard.

**Specify DNS addresses** - This panel helps you set up the settings for up to three Domain Name Systems. You are not required to enter Domain Name Systems in order to continue with your setup.

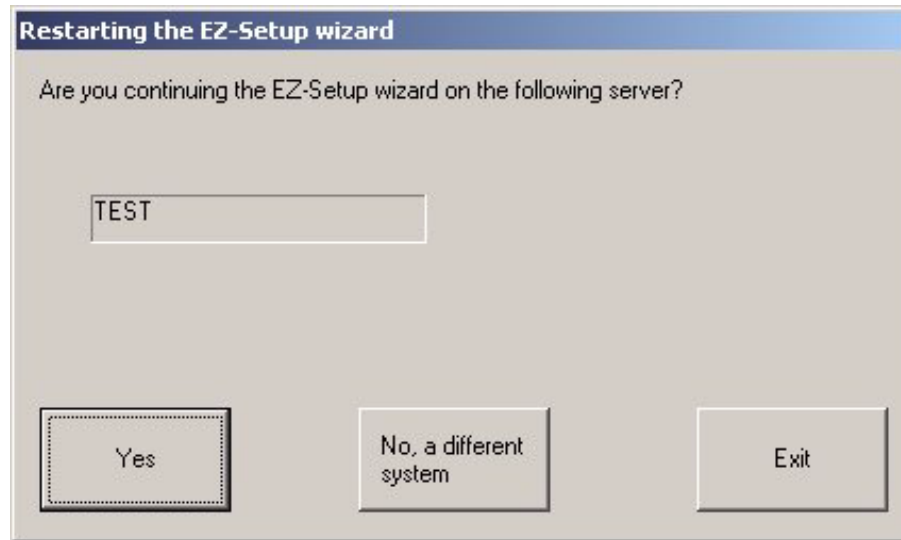
To add Domain Name Systems to the list, follow these steps:

1. In the address field, type the IP address of the server you want to use as a Domain Name System.
2. Click Add.

To remove Domain Name Systems from the list, follow these steps:

1. Select the IP address of the server that you want to remove from the list.
2. Click Remove.

# Restarting EZ-Setup



# Notes: Restarting EZ-Setup Wizard

If you restart the EZ-Setup Wizard after not completing a previous setup, you will be presented with three options:

- Continue the EZ-Setup Wizard on the named system.
  - If you choose to restart the wizard, you will be taken back to the point at which you exited and can continue with the installation. This is made possible by the log that is generated by the wizard in an earlier step.
- Start the wizard on a different system.
  - You can choose to run the wizard and setup a different system.
- Exit the wizard.
  - You may exit the wizard and return later to complete the setup.

# EZ-Setup Custom Setup Wizard

IBM  server iSeries

*Allows additional customization of the following functions:*

- Extreme Support
- Performance Management/400e
- Directory Services
- Internet Setup Wizard
- Lotus Domino
- Information Center



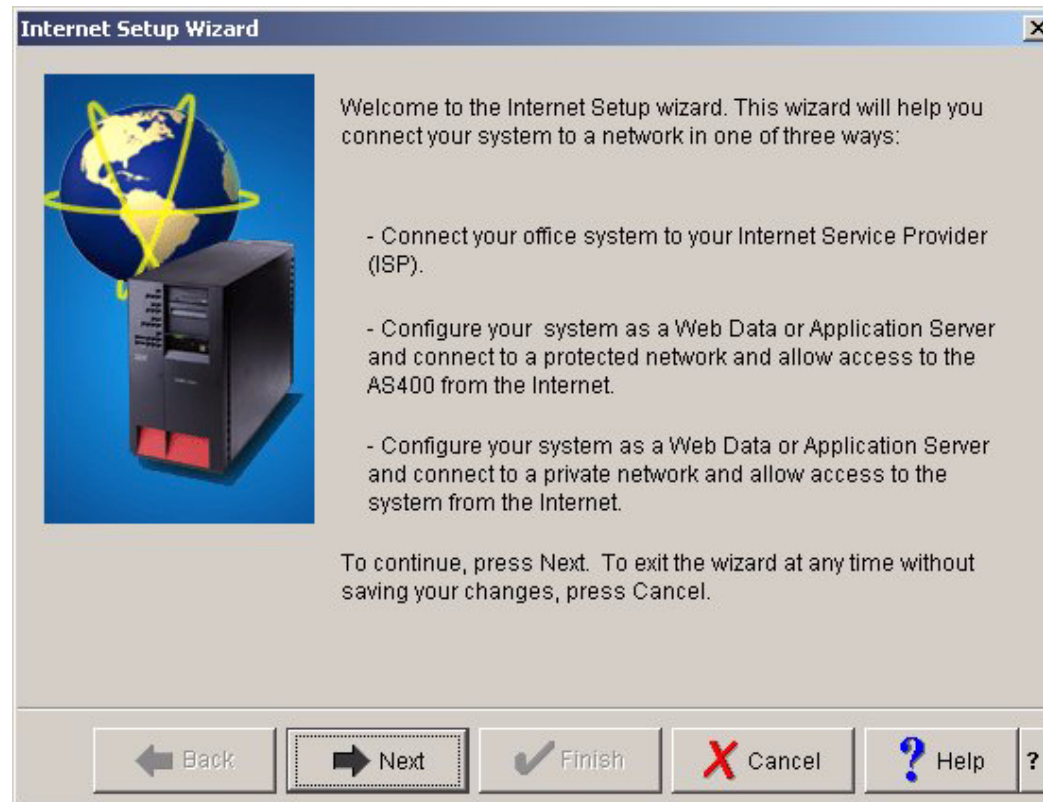
**IBM**  server. For the next generation of e-business.



The EZ-Setup Custom Setup component includes access to a number of additional wizards such as:

- Extreme Support - Used in conjunction with Management Central, Extreme Support enables you to configure just one connection to IBM (on the Central system) collection information from the endpoints, and sent the data through that connection to IBM
- Performance Management/400e -Is a systems management tool for measuring AS/400 performance. It helps you identify potential resource constraints, plan for future growth, and make performance adjustments. Selecting this wizard will activate PM/400 on your server.
- Directory Services - configures your system to use LDAP Directory Services
- Internet Setup - guides you through connecting your system to the Internet through a dialup or LAN connection. It also helps configure your system, as a Web or Domino server
- Domino Server - Installs and configures Domino Server on your system. The information you enter will determine what your final server configuration will be. You can even specify mail and web server options
- Information Center - Provides access to Information Center. an information resource containing reference, conceptual and how to information as well as many of the manuals you have used in the past. Additional links to other resources such as iSeries 400 Technical Studio, Redbooks, and related web sites

# Internet Setup Wizard



# Notes: Internet Setup Wizard

The Internet Setup Wizard will help you connect your system to a network in one of the following ways:

- By connecting your system to your Internet Service Provider (ISP) through a dialup connection.
- By configuring your system as a Web Data or Application Server and connecting to a protected network that allows access to the system from the Internet.
- By configuring your system as a Web Data or Application Server and connecting to a private network and that allows access to the system from the Internet.

To begin configuring your system to connect to the Internet, click Next.

After you finish with each panel, click Next. To return to a previous panel, click Back.

# Final Setup

## What do I do next?

Provides information on other tasks you may want to consider at this point such as:

- System Backups
- PTFs
- Creating profiles
- Configuring printers
- Setting system security values



Congratulations! You have completed EZ-Setup.

However, there are some additional setup tasks that you should consider performing on your server, such as:

- Performing and scheduling system backups
- Installing additional licensed programs
- Ordering and installing PTFs using the Internet PTF Facility
- Creating and managing user and group profiles
- Setting up printers
- Setting system security values and levels

You will need to use the graphical user interface to the server, Operations Navigator, along with the documentation provided in the Information Center to complete these tasks.

- Click Finish to close EZ-Setup and launch a topic in the Information Center designed to direct you through these additional setup tasks. This will guide you in completing the setup of your server. If you would like to return to EZ-Setup at a later time to complete any of the setup tasks that you have not yet performed, you can do so by accessing the EZ-Setup icon in the Client Access folder. If you would like to reconfigure or make changes to the setup tasks that you have performed through EZ-Setup, you cannot do this through EZ-Setup. You will need to use Operations Navigator to change the settings, values, and configurations.

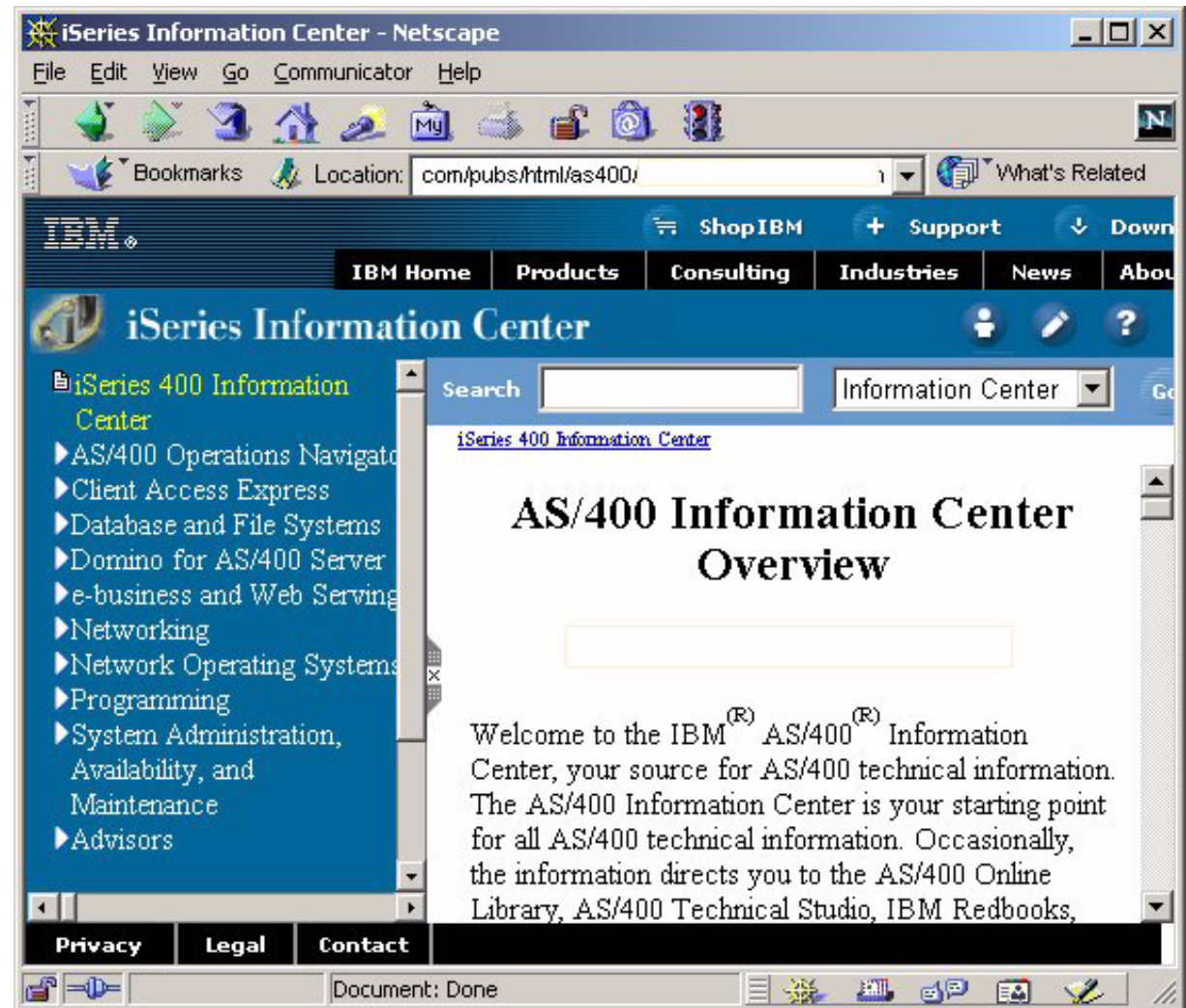
# Appendix

**IBM @server.** For the next generation of e-business.

# Additional Documentation

Selecting 'Finish' from the Final Setup display will start your PC's default browser and initiate an Internet connection to the AS/400 Information Center.

- Here you can obtain additional information about AS/400 setup considerations.



# Trademarks and Disclaimers

© Copyright International Business Machines Corporation 2001

References in this document to IBM products or services do not imply that IBM intends to make them available in every country.

The following terms are trademarks or registered trademarks of International Business Machines Corporation in the United States, other countries, or both:

AS/400	IBM Logo
AS/400e	iSeries
e-business logo	OS/400
IBM	

Lotus, Freelance, and Word Pro are trademarks of Lotus Development Corporation in the United States, other countries, or both.

Tivoli and NetView are trademarks of Tivoli Systems Inc. in the United States, other countries, or both.

C-bus is a trademark of Corollary, Inc. in the United States, other countries, or both.

Java and all Java-based trademarks and logos are trademarks or registered trademarks of Sun Microsystems, Inc. in the United States, other countries, or both.

Microsoft, Windows, Windows NT, and the Windows logo are trademarks of Microsoft Corporation in the United States, other countries, or both.

PC Direct is a trademark of Ziff Communications Company in the United States, other countries, or both and is used by IBM Corporation under license.

ActionMedia, LANDesk, MMX, Pentium and ProShare are trademarks of Intel Corporation in the United States, other countries, or both.

UNIX is a registered trademark of The Open Group in the United States and other countries.

SET and the SET Logo are trademarks owned by SET Secure Electronic Transaction LLC.

Other company, product and service names may be trademarks or service marks of others.

Information is provided "AS IS" without warranty of any kind.

All customer examples described are presented as illustrations of how those customers have used IBM products and the results they may have achieved. Actual environmental costs and performance characteristics may vary by customer.

Information in this presentation concerning non-IBM products was obtained from a supplier of these products, published announcement material, or other publicly available sources and does not constitute an endorsement of such products by IBM. Sources for non-IBM list prices and performance numbers are taken from publicly available information, including vendor announcements and vendor worldwide homepages. IBM has not tested these products and cannot confirm the accuracy of performance, capability, or any other claims related to non-IBM products. Questions on the capability of non-IBM products should be addressed to the supplier of those products.

All statements regarding IBM future direction and intent are subject to change or withdrawal without notice, and represent goals and objectives only. Contact your local IBM office or IBM authorized reseller for the full text of the specific Statement of Direction.

Some information in this presentation addresses anticipated future capabilities. Such information is not intended as a definitive statement of a commitment to specific levels of performance, function or delivery schedules with respect to any future products. Such commitments are only made in IBM product announcements. The information is presented here to communicate IBM's current investment and development activities as a good faith effort to help with our customers' future planning.

Performance is based on measurements and projections using standard IBM benchmarks in a controlled environment. The actual throughput or performance that any user will experience will vary depending upon considerations such as the amount of multiprogramming in the user's job stream, the I/O configuration, the storage configuration, and the workload processed. Therefore, no assurance can be given that an individual user will achieve throughput or performance improvements equivalent to the ratios stated here.

Photographs shown are of engineering prototypes. Changes may be incorporated in production models.

**IBM**  server. For the next generation of e-business.