



**VP FILE CONVERSION OF
DOCUMENT INTERCHANGE
FORMAT**

XEROX

VP Series Training Guide
Version 1.0

This publication could contain technical inaccuracies or typographical errors. Changes are periodically made to the information herein; these changes will be incorporated in new editions of this publication.

This publication was printed in September 1985 and is based on the VP Series 1.0 software.

Address comments to:

Xerox Corporation
Attn: OS Customer Education (C10-21)
101 Continental Blvd.
El Segundo, California 90245

WARNING: This equipment generates, uses, and can radiate radio frequency energy and, if not installed and used in accordance with the instructions manual, may cause interference to radio communications. It has been tested and found to comply with the limits for a Class A computing device pursuant to subpart J of part 15 of the FCC rules, which are designed to provide reasonable protection against such interference when operated in a commercial environment. Operation of this equipment in a residential area is likely to cause interference, in which case the user at his own expense will be required to take whatever measures may be required to correct the interference.

Printed in U.S.A. Publication number: 610E00640

XEROX®, 6085, 8000, 8010, 860, 820-II, 8040, 5700, 8700, 9700, 495-1, ViewPoint, and VP are trademarks of Xerox Corporation.

IBM is a registered trademark of International Business Machines.

DEC and VAX are trademarks of Digital Equipment Corporation.

Wang Professional Computer is a trademark of Wang Laboratories, Inc.

Lotus 1-2-3 is a trademark of Lotus Development Corporation.

MS-DOS is a trademark of Microsoft Corporation.

The Source is a service mark of Source Telecomputing Corporation.

VisiCalc is a registered trademark of VisiCorp.

WordStar is a registered trademark of MicroPro International Corporation.

Teletype is a registered trademark of Teletype Corporation.

© 1985, Xerox Corporation. All rights reserved.

Table of contents

1. Introduction	1-1
Getting started	1-2
2. Converting DIF files	2-1
Overview	2-1
Retrieving the file converter icon	2-1
Loading conversion software	2-3
Converting to ViewPoint document format	2-4
Converting to DIF document format	2-9
Summary	2-10
3. Additional data	3-1
Overview	3-1
Converting folders and multiple icons	3-1
Converter history	3-2
Summary	3-2
4. Final progress check	4-1
Answers to final progress check	4-2

(This page intentionally blank.)

1. Introduction

File conversion is a tool offered on the Xerox 6085 and 8010 workstation. It is designed to convert files to a format usable by your workstations. It also allows documents created at your workstation to be converted to formats usable by other hardware with other software applications.

Software applications, such as spreadsheets and word processors, create their files using formats that are different from the 6085/8010 format. Being able to convert files from one document format to another increases the workstation's multifaceted capabilities.

This self study guide is designed to provide you with the general concepts and practice necessary to convert documents to and from 6085/8010 ViewPoint format and DIF (Document Interchange Format).

Other software packages available from Xerox allow you to use file conversion for Xerox 860 record files; Lotus 1-2-3 and VisiCalc spreadsheets; and ASCII, WordStar, and Xerox 860 documents.

After completing this self study guide, you should be able to:

- Retrieve the converter icon from the directory onto your desktop
- Load and activate the VP File Conversion of DIF Documents software from a floppy disk at either a networked or a remote workstation
- Convert DIF format documents to and from ViewPoint format

Getting started

Before you begin this self study guide, you should know how to operate your workstation. Complete the following:

- "VP Training Introduction" tab
- "VP Document Editor" self study guide
- "VP NetCom," "VP RemoteCom," or "VP StandAlone" self study guide, according to the configuration of your workstation

To complete this self study guide, you need a 6085 Professional Computer System or an 8010 Information System. In addition, the following software is required:

- VP File Conversion of DIF Documents software
- VP Document Editor software

To verify that the software packages are installed and running, open the application loader, which is located in the workstation divider in the directory. If either software package is not displayed when you open the application loader, or if its status is set to Idle, refer to the "Application Loader" chapter of the "Xerox ViewPoint" self study guide.

In addition to the conversion-related software, one or more of the communications software packages is required:

- VP NetCom software, if document exchange is on a network
- VP RemoteCom software, if document exchange is on a remote system
- VP StandAlone software, if converted document exchange is done by means of floppy disks

Each chapter of this self study guide introduces a number of related concepts. When these concepts involve on-line practice, exercises are included. At the end of your training, you review all the skills taught with a final progress check.

When a term that is new or unique is introduced, it is italicized and placed in boldface type. You can find a more detailed explanation of each term in the "Glossary" tab of the VP Series reference library.

You need examples of DIF documents to use as practice documents. Practice in converting documents is determined by the availability of DIF documents on your workstation.

Once the converter icon is configured on your desktop with DIF document conversion software, you select the appropriate options from the option sheet to complete the conversion.

Beginning with this Introduction, continue through each chapter sequentially, at your own pace, until you have mastered the skills taught. Your training should take approximately an hour and a half.

While you are completing this self study guide, it is advisable that you have the tabs titled "VP Document Editor" and "VP File Conversion of DIF Documents" in the VP Series reference library available for easy referral.

(This page intentionally blank.)

2. Converting DIF files

Overview

Before VP File Conversion of Document Interchange Format documents software can be used, it must be loaded in the workstation. Once the software has been activated, it is ready to convert any DIF documents to 6085/8010 ViewPoint format. It is also capable of converting ViewPoint documents to DIF document formats.

After completing this chapter, you should be able to retrieve the converter icon, load conversion software, and convert DIF documents to ViewPoint documents for use at the workstation.

Retrieving the file converter icon

You can convert a DIF document to Xerox 6085/8010 format to take advantage of the many printing and layout options that are available. By using the file conversion utility, you can do this without rekeying the entire document.

Once the DIF conversion software has been loaded into the system using the application loader icon, you retrieve a new icon from the office aids divider of the directory. This icon is called the converter icon.

In this exercise, you retrieve the converter icon from the directory. This exercise is not necessary if there is already a converter icon on your desktop.

1. **Open the directory icon.**
2. **Open the workstation divider.**

3. **Open the office aids divider.**
4. **Copy the converter icon to your desktop (Figure 2-1).**
5. **Select [CLOSE ALL] in the directory window.**

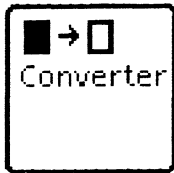


Figure 2-1 Converter icon

Like most of the other icons on the desktop, the converter icon has properties and can be opened. When the property sheet is displayed, the properties listed depend on which conversion software has been loaded into the system.

If no conversion application is loaded, or if it is loaded but not running, the message "The converter cannot be used until one or more conversions have been loaded" appears when the PROP'S key is pressed.

Once the options on the converter icon property sheet (Figure 2-3) are selected to convert incoming DIF-formatted documents to outgoing Xerox 6085/8010-formatted documents, the conversion is done automatically by the software, and a new icon representing the converted document appears on the desktop.

A foreign document such as a DIF document can be placed on the desktop either by retrieving it from a floppy disk or from the network. It appears on the desktop as a icon, but it cannot be opened without being converted.

Loading conversion software

Each conversion application must be retrieved from floppy disk, through remote communication, or from the network. Check with your System Administrator to determine if VP File Conversion of DIF Documents software is available through RemoteCom or NetCom.

In the following exercise, you load the DIF document conversion software from a floppy disk.

1. Insert the application conversion floppy disk into the disk drive and close the door.
2. Select the floppy disk icon.
3. Press <OPEN>.

From the listing of the contents of the floppy disk icon:

4. Select [VP FILE CONVERSION OF DIF DOCUMENTS].
5. Copy the conversion application icon to the application loader icon (Figure 2-2). The loading process begins. When the software is loaded, the "Done" message is displayed.
6. Close the floppy disk window.
7. Eject the floppy disk by pressing the button on the floppy disk drive.

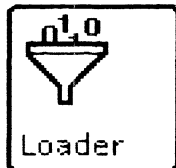


Figure 2-2 Application loader icon

NOTE: Conversion software retrieved from RemoteCom or NetCom is loaded in the same way. If the software is copied to the open application loader icon, you must select [RUN] after the software is loaded.

By opening the property sheet of the conversion application icon, you can choose to have this software automatically running each time the system comes up, by selecting [YES] for the Auto Run At Startup option.

There is additional information on using the application loader icon in the "Application Loader" sub-tab of the VP Series reference library and the Xerox "ViewPoint" self study guide.

In the following exercise, you confirm that the conversion software is now active.

1. Select the converter icon.
2. Press <PROP'S>. The DIF file conversion application is now listed as an option on the converter icon property sheet.

Each additional conversion utility package added to the system is loaded in the same way. Be sure the conversion software you need is loaded before you attempt to convert to or from that document format.

If a conversion attempt is made without the necessary software loaded, the message "Software for converting icons of that type has not been loaded" is displayed.

3. Select [DONE].

Converting to ViewPoint document format

The converter icon property sheet determines how conversion decisions are made. Take a close look at the choices available in each section of the property sheet, item by item.

In the following exercise, you open, rename, and select conversion properties to convert a DIF document to a ViewPoint document.

1. Select the converter icon.

2. Press <PROP'S>. The property sheet opens (Figure 2-3).

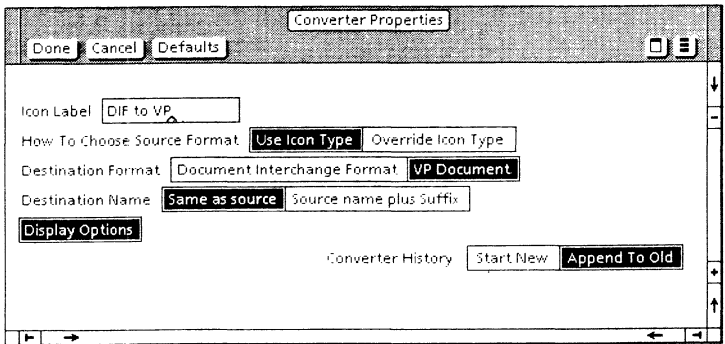


Figure 2-3 DIF conversion property sheet

At the top of the converter property sheet are the usual commands available on any workstation window. You can select [DONE] when you have made your option selections and are ready to begin the conversion; you can select [CANCEL], which sets the properties back to those previously defined; or you can select [DEFAULTS], which resets the properties to system-defined settings.

Icon Label

The first option available is to change the label on the converter icon itself. You may want to change the name of a converter icon if you have several different file conversion software applications running at one time on your workstation. Currently the word "Converter" is highlighted.

3. Delete Converter.
4. Type: DIF Doc. to VP.

You can have several converter icons on the desktop at one time, each having preset options

selected for frequently converted formats. For example, you might have a converter labeled DIF with preselected properties to quickly convert a DIF file, have one to convert WordStar documents, and have still another to convert spread-sheets.

How to Choose Source Format

This option determines how the format for the source file (file to be converted) is to be determined. There are two options. You will practice selecting both.

[USE ICON TYPE] - When you select this option, the system reads the document icon and guesses the format of the file. For example, if the document is in DIF format, the system sets the format to DIF. This option is the current selection and the default.

5. Select [OVERRIDE ICON TYPE].

[OVERRIDE ICON TYPE] - When you select this option, you are responsible for selecting the appropriate format setting on the property sheet. You should use this selection only if you are certain of the document's format. With this option selected, the next line asks you to indicate the source document.

6. Reselect [USE ICON TYPE].

Source Format

As already demonstrated, the Source Format label appears on the property sheet only when [OVERRIDE ICON TYPE] is selected. The highlighted option represents the format of the source document.

Additional options listed reflect all conversion software currently loaded and running on the workstation. Because of this, the number of options may be extensive, or it may be limited to the one file conversion application if only one is loaded.

Destination Format

After a file has been copied to the converter icon, the only destination format options listed are those that are acceptable for that source document to be converted to. For example, the system does not allow you to convert a spreadsheet file to a text file.

NOTE: This line has been shortened and does not reflect all the options listed on the property sheet.

The property sheet may reflect the options set the last time the converter was used. In this case, the destination format selection may be inaccurate. You must select the destination format option.

7. Select [VP DOCUMENT].

Destination Name

This option allows you to name the converted document. There are two choices:

[SAME AS SOURCE] - will name the converted icon the same as the source document.

[SOURCE NAME PLUS SUFFIX] - adds the word "converted" to the source document name, as well as the time and date of the conversion.

8. Select [SAME AS SOURCE].

[DISPLAY OPTIONS]

When you select this option, the option sheet opens and displays the options when a file is copied to the converted icon. If it not selected, the conversion process begins immediately after the source file is copied to the converter icon. This is a timesaver, and a reason for having a preset converter icon for each conversion requirement.

9. Select [DISPLAY OPTIONS].

Converter History

This option allows you to maintain a record of the conversions which have been done by this converter. The converter history file can be displayed by opening the converter icon.

[START NEW] - erases any previous history of the converter and begins a new history file. If it is always selected, the only thing to appear in the file is the most recent conversion.

[APPEND TO OLD] - continues to maintain a history of the converter.

10. Select [APPEND TO OLD].

All the options for converting the 860 document have been selected.

11. Select [CLOSE].

12. Copy the DIF document to the converter icon. The option sheet is displayed. The option sheet opens only if [DISPLAY OPTIONS] is selected in the converter icon property sheet.

The converter option sheet (Figure 2-4) shows that DIF document conversion software has been loaded. Documents can be converted from DIF format to Xerox 6085/8010, or from Xerox format to DIF format, by selecting options.

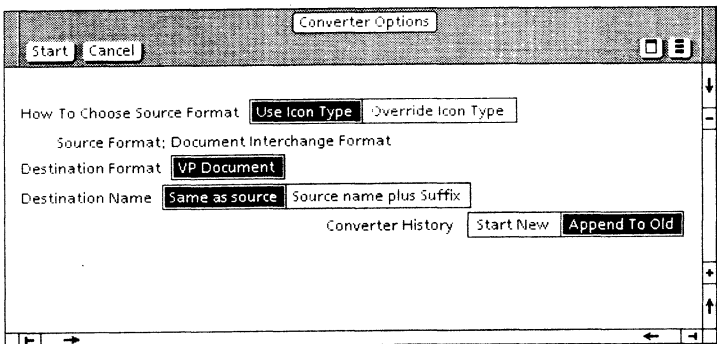


Figure 2-4 Converter option sheet

13. Select [START].

The conversion begins and a new icon is placed on your desktop with the same name as the source document.

The converter icon property options are also available by pressing <PROP'S> without moving a document to the icon.

Converting to DIF document format

To convert a ViewPoint document to DIF format, copy the workstation document to the same converter icon you used earlier, and select those options that convert it to DIF document format. This choice is made on the destination format line of the option sheet.

Once the option is chosen, select [START]. The converted document can now be copied to a floppy disk or sent by way of the network to other workstations or personal computers.

If you encounter any problems during the conversion process, refer to the tab titled "VP File Conversion of DIF Documents in the VP Series reference library for information about text characters that have conversion limitations due to character, text, and/or formatting differences.

Summary

In this chapter, you studied how to:

- Retrieve a converter icon from the directory onto your desktop
- Load and activate the DIF document format converter application software from a floppy disk, using the application loader
- Select options from the converter icon property sheet to convert a DIF document to a ViewPoint document for use at your workstation

If you need more practice, complete the exercises again.

3. **Additional data**

Overview

This chapter explains other aspects of the file conversion utility. In addition to this chapter, the tab titled "VP File Conversion of DIF Documents" in the VP Series reference library will assist in broadening your understanding of file conversion. It includes a table that lists conversion limitations in detail.

Converting folders and multiple icons

The entire contents of a folder can be converted at one time. It is not necessary to select individual documents and convert them singly. However, this can present a problem because a selected folder may have several different icon formats in it.

If there are different formats within the selected folder, there is no way for the system to determine which destination format may be legal, since all possible destination formats are included.

If a format that does not fit into the property limitations is included, the system ignores the document and does not attempt to convert it. A message is displayed, but no converted file appears in the output folder.

In other respects, the converted folder is the same as the original folder.

More than one document icon can be selected from the desktop for conversion at a time, but you encounter the same limitations that you do in converting a folder. The significant difference is that each of the original converted icons is placed on the desktop as a separate new icon.

Converter history

One choice on the property sheet is the status of the converter's history. By selecting [APPEND TO OLD], you can maintain an ongoing record of the conversions you performed using a particular converter icon. This file may be erased and started again at any time by selecting [START NEW] after loading a new file to be converted.

The converter history can be reviewed by opening the converter icon.

Summary

In this chapter, you studied how folders can be converted to different document formats and how multiple icons can be converted at the same time. You also examined the converter history and how it is used.

After you finish the progress check in Chapter 4, you will have completed the training for VP File Conversion of DIF Documents. Refer to the tab titled "VP File Conversion of DIF Documents" in the VP Series reference library for further information on this software package.

4. Final progress check

To check your understanding of the file conversion utility, select a DIF document from your desktop, floppy disk, or network, and convert it to a ViewPoint document, using the converter icon whose options you set in Chapter 2. The steps to complete this task are listed on the next page.

Answers to final progress check

The numbers in parentheses indicate the chapters in which you will find details on each procedure.

1. **To convert a DIF format document to ViewPoint document format: (2)**

Select [DIF DOCUMENT].

Copy the icon to the converter icon.

2. **To set options on the converter icon option sheet: (2)**

Select [VP DOCUMENT].

Select [START].

The system places the converted icon on your desktop.