

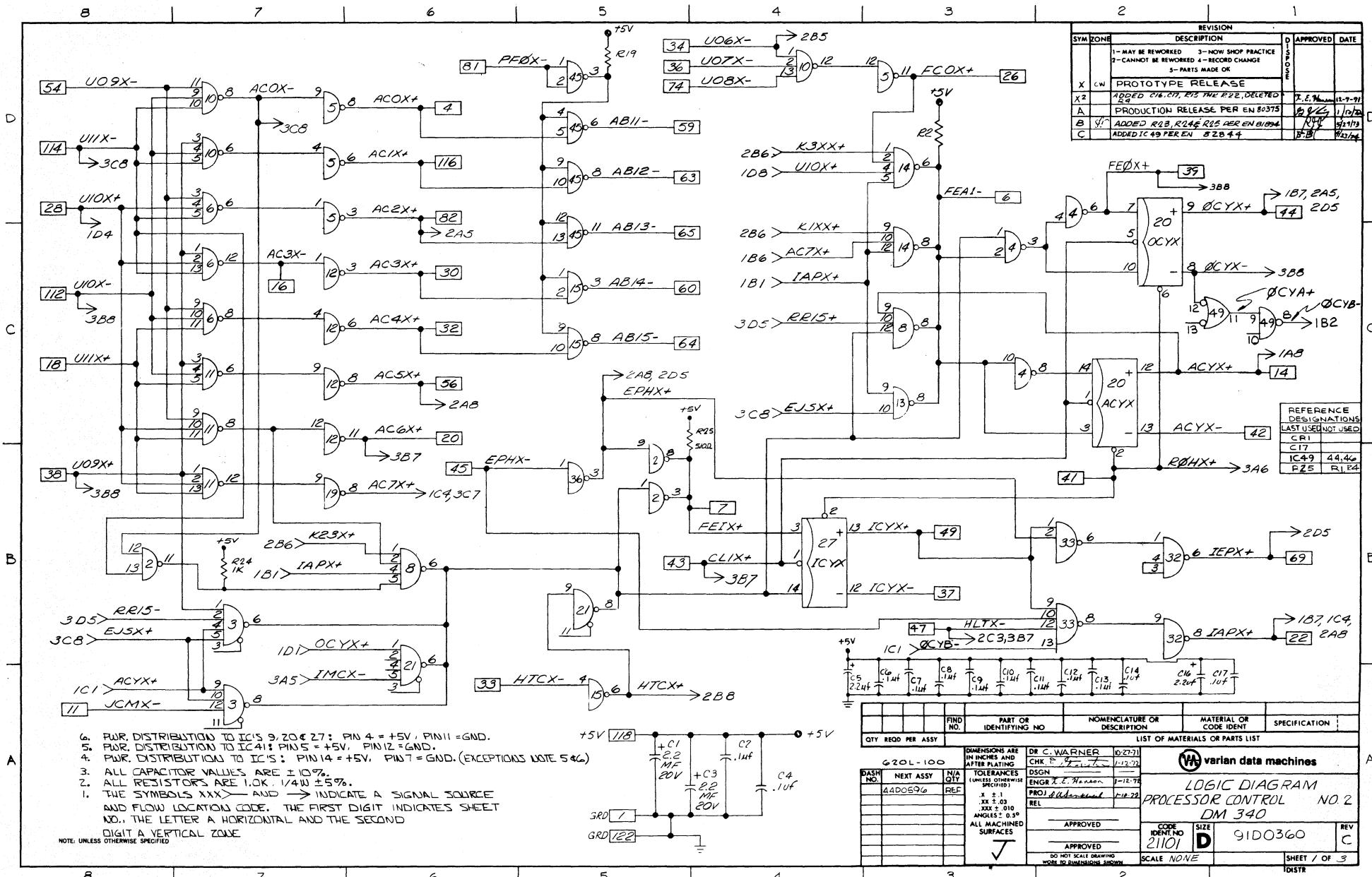
REVISIONS					
CODE	SYM	ZONE	DESCRIPTION	APPROVED	DATE
X	CW		PROTOTYPE RELEASE		
XZ	CW		ADDED RESISTORS R15-22&C16,&17	J.E. Warner	1-11-78
X3	CW		DELETED FIN 21	J.E. Warner	1-11-78
A			PRODUCTION RELEASE PER EN 80375	J.E. Warner	10/25
B	W		REVISED PER EN 81594	R.B.	11/13
I	C	09	ADDED IC47 PER EN 82844	J.E. Warner	11/24/78

MARK SERIAL NO. WHERE SHOWN USING .12 HIGH PERMANENT CHARACTERS
 MARK REVISION LETTER OF PARTS LIST TO WHICH PART WAS MANUFACTURED, APPROX WHERE SHOWN IDENTIFICATION TO BE .12 HIGH AND PERMANENT.
 NOTE: UNLESS OTHERWISE SPECIFIED

REFERENCE DRAWINGS
 LOGIC DIAGRAM 91D0360
 PHOTO MASTER 97D0706
 PW BOARD 40D0509
 SOLDER MASK 97D0708
 SILK SCREEN 97D0707

MODEL NO. 620/L-100	DIMENSIONS ARE IN INCHES AND AFTER FINISHING	DR C. WARNER 10-27-77	varian data machines a varian subsidiary 272 michigan drive, Irvine, California, 92664
NEXT ASSY 01A1277	TOLERANCES UNLESS OTHERWISE SPECIFIED	CHK 11/15/78	
MATERIAL	ENGR J.E. Warner 1-12-78	APPRO D. Warner 1-12-78	TITLE PROCESSOR CONTROL NO. 2 ASSEMBLY DM340
FINISH	BREAK ALL SHARP EDGES 200 R APPROX	APPO	CODE IDENT NO. 21101 D
DO NOT SCALE DRAWING	DO NOT SCALE DRAWING		SIZE 44D0596
			SCALE
			SHEET OF

FOR PARTS LIST SEE 44PO596

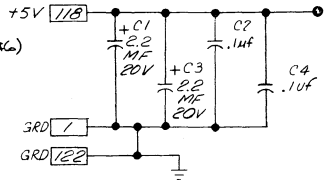


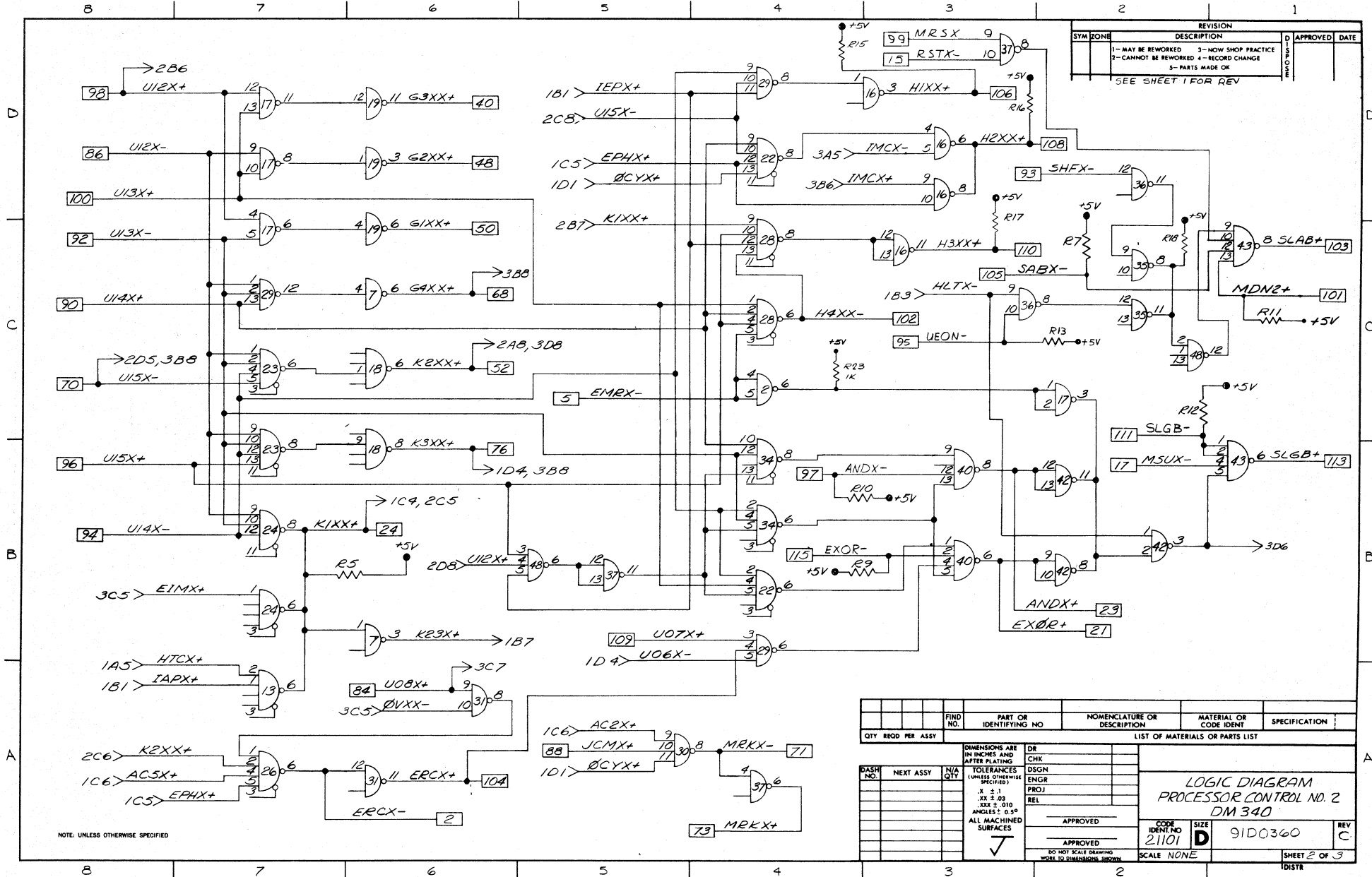
REVISION		DESCRIPTION	D	APPROVED	DATE
1-	MAY BE REWORKED	3-NOW SHOP PRACTICE			
2-	CANNOT BE REWORKED	4-RECORD CHANGE			
5-	PARTS MADE OK				
X	C/W	PROTOTYPE RELEASE			
X2		ADDED C16, C17, R23 THE R22, DELETED R24			7.2.76 11-7-71
A		PRODUCTION RELEASE PER EN 80375			12/22 1/10/72
B		ADDED R23, R24 R25 PER EN B1094			1/17 9/1/73
C		ADDED IC 49 PER EN 82844			15-21 7/2/74

REFERENCE DESIGNATIONS	LAST USED	NOT USED
C11		
C17		
IC49	44.44	
R25	R1.R4	

PART OR IDENTIFYING NO		NOMENCLATURE OR DESCRIPTION		MATERIAL OR CODE IDENT		SPECIFICATION	
QTY	REQD	PER	ASSY	LIST OF MATERIALS OR PARTS LIST			
620L-100		DIMENSIONS ARE IN INCHES AND AFTER PLATING		DR C. WARNER 0-2771		varian data machines	
DASH NO.	NEXT ASSY	M/A QTY	TOLERANCES (UNLESS OTHERWISE SPECIFIED)	CHK R. ... 1-13-72		LOGIC DIAGRAM NO. 2	
440059	REF		.X ± .1 .XX ± .03 .XXX ± .015 ALL MACHINED SURFACES	ENGR J. E. Hanson 1-12-72		DM 340	
				PROJ. ... 1-12-72		REV C	
				APPROVED		CODE IDENTIFIED 21101	
				APPROVED		SIZE 9100360	
				DO NOT SCALE DRAWING		SCALE NONE	
				WORK TO DIMENSIONS UNLESS NOTED		SHEET 1 OF 3	
						IDSTR	

6. PWR. DISTRIBUTION TO IC'S 9, 20 & 27: PIN 4 = +5V, PIN 11 = GND.
 5. PWR. DISTRIBUTION TO IC41: PINS 5 = +5V, PIN 12 = GND.
 4. PWR. DISTRIBUTION TO IC'S: PIN 14 = +5V, PIN 7 = GND. (EXCEPTIONS NOTE 5 & 6)
 3. ALL CAPACITOR VALUES ARE ±10%.
 2. ALL RESISTORS ARE 1.0K. 1/4W ±5%.
 1. THE SYMBOLS XXX → AND → INDICATE A SIGNAL SOURCE AND FLOW LOCATION CODE. THE FIRST DIGIT INDICATES SHEET NO., THE LETTER A HORIZONTAL AND THE SECOND DIGIT A VERTICAL ZONE.
- NOTE: UNLESS OTHERWISE SPECIFIED

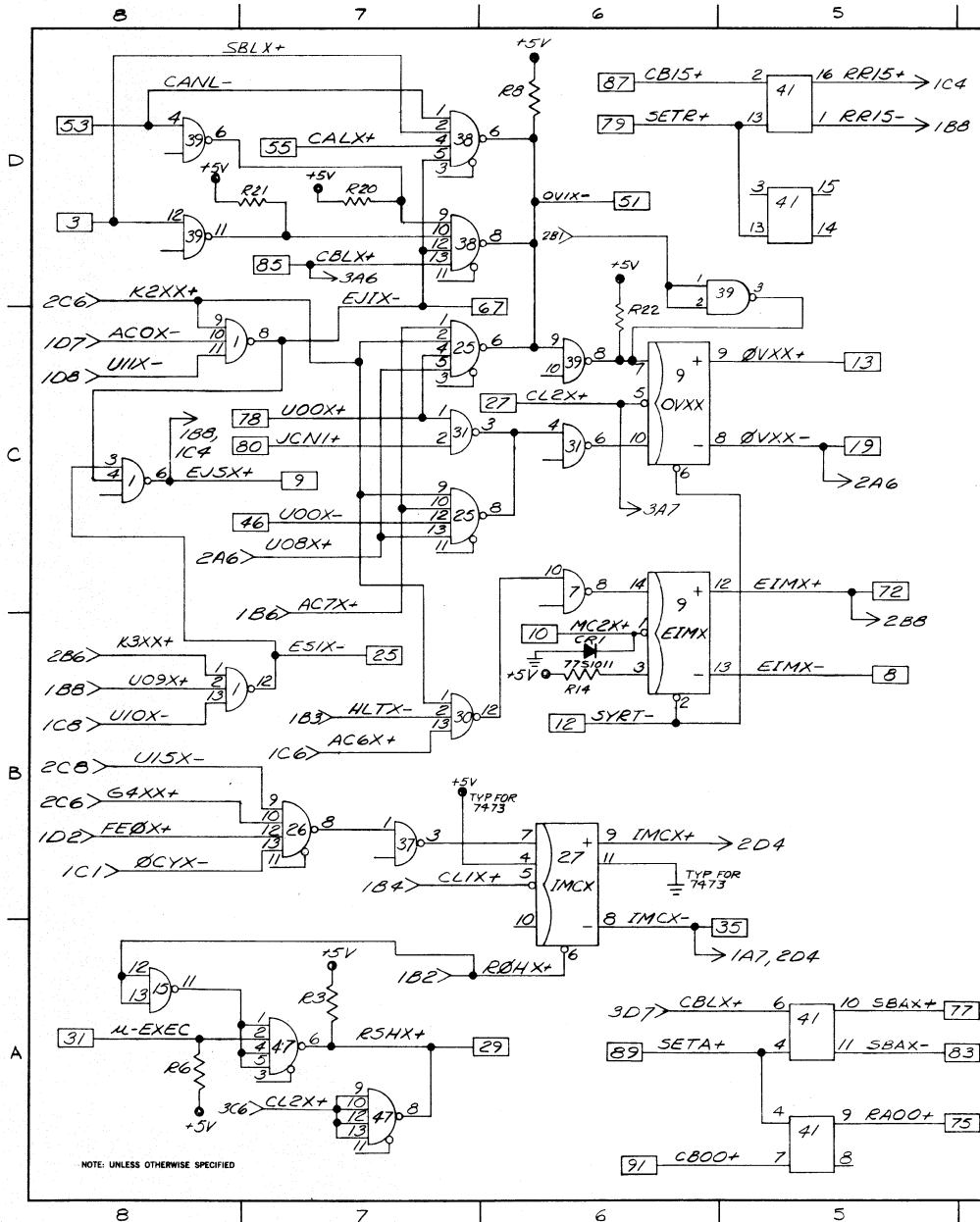




REVISION		APPROVED	DATE
SYM	ZONE		
DESCRIPTION			
1-	MAY BE REWORKED	3-	NOW SHOP PRACTICE
2-	CANNOT BE REWORKED	4-	RECORD CHANGE
5-		PARTS MADE OK	
SEE SHEET 1 FOR REV			

FIND NO.	PART OR IDENTIFYING NO.	NOMENCLATURE OR DESCRIPTION	MATERIAL OR CODE IDENT	SPECIFICATION
QTY	REQD PER ASSY	LIST OF MATERIALS OR PARTS LIST		
DASH NO.	NEXT ASSY	N/A	QTY	
DIMENSIONS ARE IN INCHES AND AFTER PLATING				
TOLERANCES (UNLESS OTHERWISE SPECIFIED)				
.X ± .1				
.XX ± .05				
XXX ± .010				
ANGLES ± 0.5°				
ALL MACHINED SURFACES				
APPROVED _____				
APPROVED _____				
DO NOT SCALE DRAWING				
WORK TO DIMENSIONS SHOWN				
LOGIC DIAGRAM PROCESSOR CONTROL NO. 2 DM 340			CODE IDENT NO 21101	SIZE D
			91D0360	REV C
			SCALE NONE	SHEET 2 OF 3
				IDISTR

NOTE: UNLESS OTHERWISE SPECIFIED



- 1 GND →
- 2 ERCX- →
- 3 SBLX+ →
- 4 ACOX+ →
- 5 EMRX- →
- 6 FEAI- →
- 7 FEIX+ →
- 8 EIMX- →
- 9 EJSX+ →
- 10 MC2X+ →
- 11 JCMX- →
- 12 SYRT- →
- 13 0VXX+ →
- 14 ACYX+ →
- 15 RSTX- →
- 16 AC3X- →
- 17 MSUX- →
- 18 UIIX+ →
- 19 0VXX- →
- 20 AC6X+ →
- 21 EXOR+ →
- 22 IAPX+ →
- 23 ANDX+ →
- 24 K1XX+ →
- 25 ESTX- →
- 26 FCOX+ →
- 27 CL2X+ →
- 28 U10X+ →
- 29 RSHX+ →
- 30 AC3X+ →
- 31 K-EXEC →
- 32 AC4X+ →
- 33 HTCX- →
- 34 U06X- →
- 35 IMCX- →
- 36 U07X- →
- 37 ICYX- →
- 38 U09X+ →
- 39 FE0X+ →
- 40 G3XX+ →
- 41 ROHX+ →
- 42 ACYX- →
- 43 CLIX+ →
- 44 0CYX+ →
- 45 EPHX- →
- 46 U00X- →
- 47 HLTX- →
- 48 G2XX+ →
- 49 ICYX+ →
- 50 G1XX+ →
- 51 0VIX- →
- 52 K2XX+ →
- 53 CANL- →
- 54 U09X- →
- 55 CALX+ →
- 56 AC5X+ →
- 57 →
- 58 →
- 59 AB11- →
- 60 AB14- →
- 61 →
- 62 →
- 63 AB12- →
- 64 AB15- →

REVISION		APPROVED	DATE
SYM	DESCRIPTION		
1-	MAY BE REWORKED		
2-	CANNOT BE REWORKED 4-RECORD CHANGE		
3-	NOW SHOP PRACTICE		
4-	PARTS MADE OK		
SEE SHEET 1 FOR REV.			

- 65 AB13- →
- 66 EJIX- →
- 67 G4XX- →
- 68 IEPX+ →
- 69 UI5X- →
- 70 MRKX- →
- 71 EIMX+ →
- 72 MRKX+ →
- 73 UOBX- →
- 74 RA00+ →
- 75 K3XX+ →
- 76 SBAX+ →
- 77 U00X+ →
- 78 SETR+ →
- 79 JCN1+ →
- 80 PFOX- →
- 81 AC2X+ →
- 82 SBAX- →
- 83 U08X+ →
- 84 UI2X- →
- 85 CB15+ →
- 86 JCMX+ →
- 87 SETA+ →
- 88 UI4X+ →
- 89 CB00+ →
- 90 UI3X- →
- 91 SHFX- →
- 92 →
- 93 →
- 94 UI4X- →
- 95 UEDN- →
- 96 UI5X+ →
- 97 ANDX- →
- 98 UI2X+ →
- 99 MRSX+ →
- 100 UI3X+ →
- 101 MDN2+ →
- 102 H4XX- →
- 103 SLAB+ →
- 104 ERCX+ →
- 105 SABX- →
- 106 H1XX+ →
- 107 →
- 108 H2XX+ →
- 109 U07X+ →
- 110 H3XX+ →
- 111 SLGB- →
- 112 UI0X- →
- 113 SLGB+ →
- 114 UIIX- →
- 115 EXOR- →
- 116 ACIX+ →
- 117 →
- 118 +5V →
- 119 →
- 120 →
- 121 →
- 122 GND →

FIND NO.	PART OR IDENTIFYING NO.	NOMENCLATURE OR DESCRIPTION	MATERIAL OR CODE IDENT	SPECIFICATION
QTY REQD PER ASSY				
LIST OF MATERIALS OR PARTS LIST				
DASH NO.	NEXT ASSY	N/A QTY	DR _____ CHK _____ DSGN _____ ENGR _____ PROJ _____ REL _____ APPROVED _____ APPROVED _____ DO NOT SCALE DRAWING WORK TO DIMENSIONS ONLY	
DIMENSIONS ARE IN INCHES AND AFTER PLATING		TOLERANCES (UNLESS OTHERWISE SPECIFIED) .X ± .1 .XX ± .03 .XXX ± .010 ANGLES ± 0.5° ALL MACHINED SURFACES		
LOGIC DIAGRAM PROCESSOR CONTROL NO. 2 DM 340		CODE IDENT NO	SIZE	REV
		21101	D	9100360
		SCALE		SHEET 3 OF 3
				IDSTR

NOTE: UNLESS OTHERWISE SPECIFIED