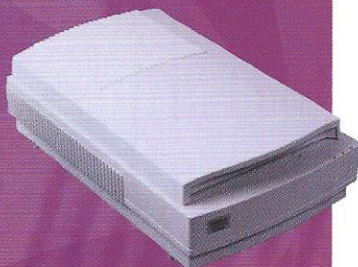


# UMAX®

# POWERLOOK

*Drum scanner quality, flatbed price.*



*Drum scanner quality,  
flatbed price.*

## POWERLOOK Out-Powers the Competition!

### Color

► *If you want a flatbed scanner that can handle all your professional pre-press applications, (as well as any scanning requirements), take a PowerLook...*

The UMAX PowerLook, that is. It's the first flatbed scanner with true 3.0 dynamic range for brilliant, true color. Its 30-bit scanning mode recognizes more than one billion colors and 1,024 shades of gray. And 256 separate steps each of highlight and shadow adjustment deliver perfect definition. The PowerLook's color charged coupled device (CCD) captures 30-bit color in just one pass, without the need for prisms, filters or color lamps. *You get superior color with outstanding reliability.*

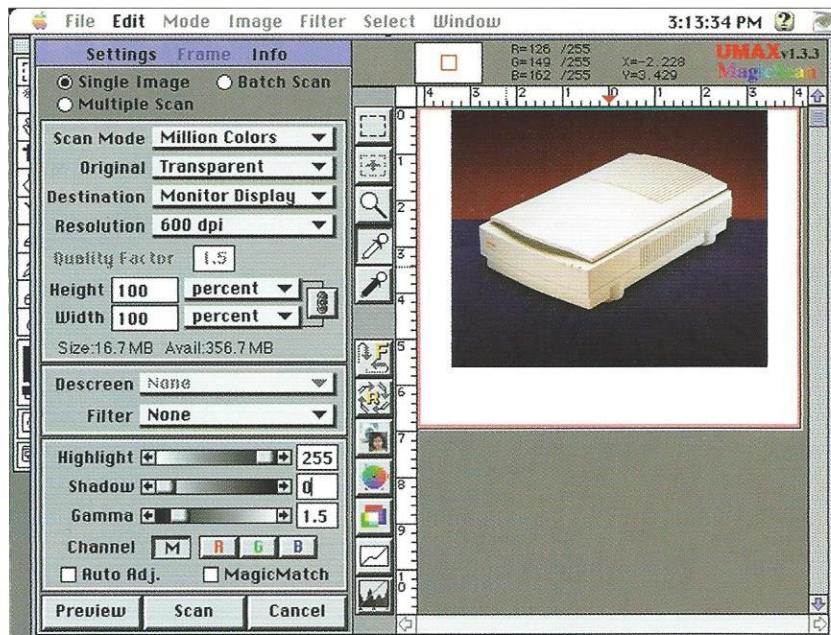
### Resolution

The UMAX PowerLook generates sharp, clear images at 1200 dpi. Through its unique

UltraView® technology, it can achieve resolutions up to 9600 dpi—making it ideal for enlargements and lineart images. Adjustable contrast and brightness controls allow you to perfectly match input images, as well as manipulate output to meet your individual needs. The PowerLook also features density settings from 1 to 9600 dpi increments for even greater flexibility and its optional transparency adapter lets you scan transparent images up to 8.3" x 10."

### Speed

The PowerLook's single-pass scanning capability delivers 600 dpi, letter sized, full-color images in as little as a minute. This time savings also extends to high resolution images. In fact, tests prove that the PowerLook is 30% faster than other flatbed scanners.



The UMAX PowerLook comes complete with MagicScan, the intelligent user-interface for ultimate scanning control. MagicScan is easy to use and loaded with powerful features, such as automatic selection between high-res and standard lenses. MagicScan features batch scanning, unsharp masking, downloadable gamma curve correction, color balancing, and descreening of printed material.

**UMAX Products have won the following awards:**



## FEATURES

- Single Pass Scanning**
- 3.0 Dynamic Range**
- Adjustable density /Scaling**
- Fast Throughput**
- Built-In SCSI Interface**
- Options**

## BENEFITS

- Improved color accuracy and mechanical performance
- More than one billion colors and 1,024 shades of gray
- Maximum flexibility for input and output
- Micro-stepping motor coupled with 2MB I/O buffer
- Easy connection to Macintosh, IBM PC, and compatibles.
- Transparency Adapter for slides, transparencies and negatives.

*The most amazing feature is the fact that it's a flatbed!*

## SPECIFICATIONS

<b>Hardware Resolution</b>	600x1200 dpi; 9600 x 9600 (software)	
<b>Scanner Speed*</b>	Color: 66 sec. (600dpi, full page) *Native speed; actual speed may vary according to computer system	
<b>Maximum Document Size</b>	Reflective: 8.3"x11.7"	Transparency: 8.3" x 10"
<b>Input/Output Buffer</b>	2 MB with FIFO Handshake	
<b>Scanning Resolution</b>	1dpi to 9600dpi in 1 dpi increments	
<b>Scanning Modes</b>	Color Mode: 30 bits per pixel (internal/external)	Lineart Mode: 1 bit per pixel
	Grayscale Mode: 10 bits per pixel (internal/external)	Halftone Mode: 1 bit per pixel
<b>Scanning Settings</b>	Scaling: 1% to 400% in 1% increments	Contrast/Brightness: ±100%
	Highlight/Shadow: 256 steps	Halftone Mode: 15 built-in patterns
<b>Gamma Curve</b>	Downloadable curves	
<b>Data Output</b>	Selectable 24 or 30-bit	
<b>Hardware Interface</b>	SCSI-II with push button ID adjuster and dual connectors	
<b>Environmental Ranges</b>	Operating Temperature: 10°C-40°C	Relative Humidity: 20%-80%
<b>Power Requirements</b>	Voltage: 100-240 VAC	Frequency: 50/60Hz Consumption: 45W Max.
<b>Dimensions</b>	21.25" x 13.125" x 5.5"	
<b>Operating Noise</b>	Under 50db	
<b>Net weight</b>	20.2 lbs	

**POWERLOOK  
EXTRA VALUE  
BUNDLES**  
SCSI-II CARD FREE WITH PC BUNDLE!

**PRO-PLUS BUNDLE FOR MAC & PC**  
PhotoShop™ FULL for Image Editing  
HSC Kai's Power Tools™ SE  
HSC KPT Power Photos™ CD Sampler  
Pixar Typestry™ & 128™ Textures CD

**SE BUNDLE FOR MAC**  
PhotoShop™ LE for Image Editing  
Pixelcraft ColorAccess™ color separation software  
Pixelcraft QuickScan™

**UMAX Technologies, Inc.**  
3353 Gateway Boulevard  
Fremont, CA 94538  
Tel: 510-651-8883  
Fax: 510-651-8834  
Toll Free: 800-562-0311  
Product Info Fax Back:  
510-651-3710  
BBS# 510-651-2550

**UMAX Data Systems, Inc.**  
8F, 68, Nanking East Rd, Sec.3  
Taipei, Taiwan, ROC  
Tel:+886-2-517-0055, 517-0066  
Fax:+886-2-517-2017

**UMAX Systems GmbH**  
Grossenbaumer Weg 640472  
Dusseldorf, Germany  
Tel:+49-211-424062  
Fax:+49-211-425472