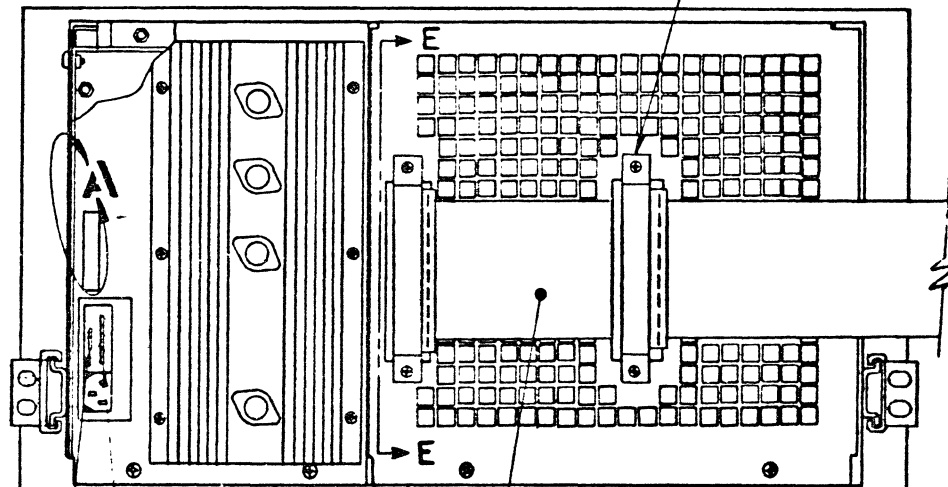
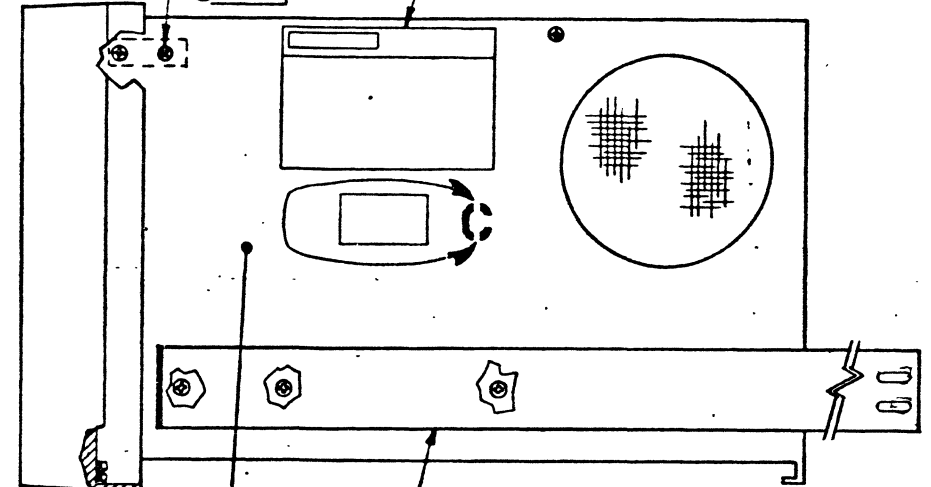
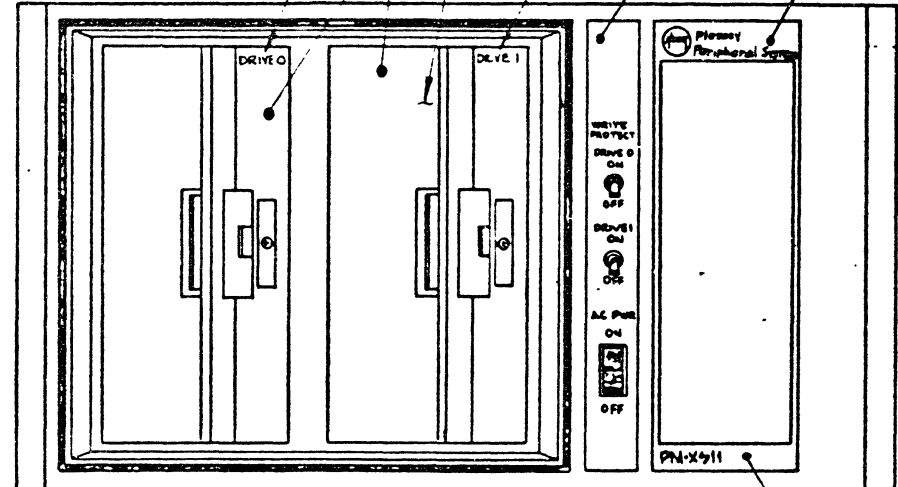
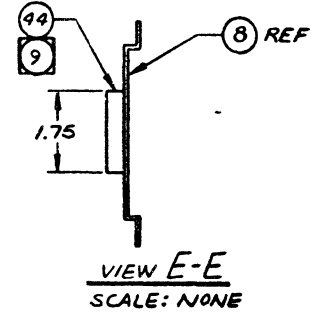


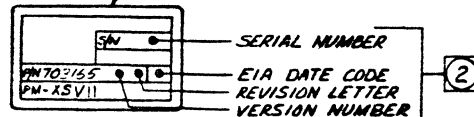
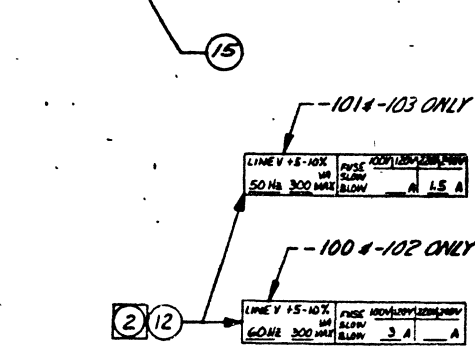
The information herein is the property of PLESSEY PERIPHERAL SYS. Transmittal receipt or possession of the information does not constitute license or imply any rights to use, sell or manufacture from this information and no reproduction or publication of it, in whole or in part, shall be made without written authorization from PLESSEY PERIPHERAL SYS.

REVISIONS				
ZONE	LTR	DESCRIPTION	DATE	APPROVED
A		RELEASE TO PROD PER EO 5527	11-17-76	[Signature]
B		INCRP EO 2881 & 2884	2-21-77	[Signature]
C		INCRP EO 3054	5-11-77	[Signature]
D		INCRP EO 3131 & 3131-1	7-16-77	[Signature]



- 8 FOR SINGLE DRIVE ASSYS (1024-103) SECURE AC & DC CABLES, ITEMS 10411, WITH ITEMS 31 AND 40, THREE PLACES LOCATED AS REQ'D.
- 7 DRIVE MODIFICATION NOTED ON SHEET 3.
- 6 FRONT PANELS TO BE PAINTED SEMI-GLOSS BLACK, AIR DRY PAINT, URETHANE OR EQUIV.
- 5 FOR 50Hz APPLICATION, VERSION-1014-103 REPLACE EXISTING DRIVE PULLEY (SHUGART # 50358) WITH ITEM 98 AND REPLACE EXISTING DRIVE BELT (SHUGART # 50356) WITH ITEM 42.
- 4 ORIENT VOLTAGE CARD TO APPLICABLE VOLTAGE REQUIREMENTS PER INSTRUCTIONS SHOWN ON DECAL, ITEM 17.
- 3 SIGNAL CABLE SHOWN FOR REFERENCE ONLY.
- 2 MARK CHARACTERS USING TYPEWRITER WITH RIBBON, UPPER CASE TYPE ONLY, PER VIEWS A AND C.

1. ASSEMBLE AND INSPECT PER WORKMANSHIP STANDARDS MANUAL.
 NOTES: UNLESS OTHERWISE SPECIFIED



VIEW A
 ROTATED 90° CW
 SCALE: NONE

VIEW C
 SCALE: NONE

9 INSTALL ITEM 44 TO ITEM 8 AS IN VIEW E-E BEFORE ASSEMBLY.

(3A) - 1004-102 ONLY	(1.5A) - 1014-103 ONLY	3 REQ'D (21)	4 REQ'D (21)	3
		3 REQ'D (26)	4 REQ'D (26)	3

PART/ASSY NO. & QTY PER ASSY	NOTE	PART OR IDENTIFYING NO.	NOMENCLATURE OR DESCRIPTION / MATERIAL	SPEC/SOURCE	CODE IDENT NO.	FIND NO.
			FOR PARTS LIST SEE PL703165-103			5
			FOR PARTS LIST SEE PL703165-102			4
			FOR PARTS LIST SEE PL703165-101			3
			FOR PARTS LIST SEE PL703165-100			2
						1

PART/ASSY REV LTR		DO NOT SCALE DRAWING		CONTRACT NO.	
-101 703150-101 PM-XSVII		SCREW THREADS PER HANDBOOK 14-8		DRAWN Tony Nuskin	
-100 703150-100 PM-XSVII		COUNTERBORE AND SPOTFACE FILLET RADI TO BE .002 MAXIMUM		CHECK J. Tankis 11-17-76	
PART NO.		REMOVE ALL BURRS AND BREAK SHARP EDGES EQUIVALENT TO A48		ENGR.	
NEXT ASSY USED ON		ROUNDSNESS OF MACHINED SURFACES PER USAS 84.1		PROJ. ENGR. [Signature]	
APPLICATION		STANDARD HOLE TOLERANCE PER AND 98E7		PROD. DESIGN J. Bell	
		TOLERANCES ON JE = .0005 JOE = .0005 AND ANGLES = 2.5° 30'		SIZE CODE IDENT NO. DWG NO.	
		INTERPRET DIMENSIONS AND TOLERANCES PER USAS 17.4.5		D 52648 703165	
		DIMENSIONS ARE IN INCHES AND APPLY AFTER HEAT TREAT AND FINISH UNLESS OTHERWISE SPECIFIED		SCALE: 1/2	
				OTHER APPROVALS	
				SHEET 1 OF 3	
				DISTR NO. 12347010	

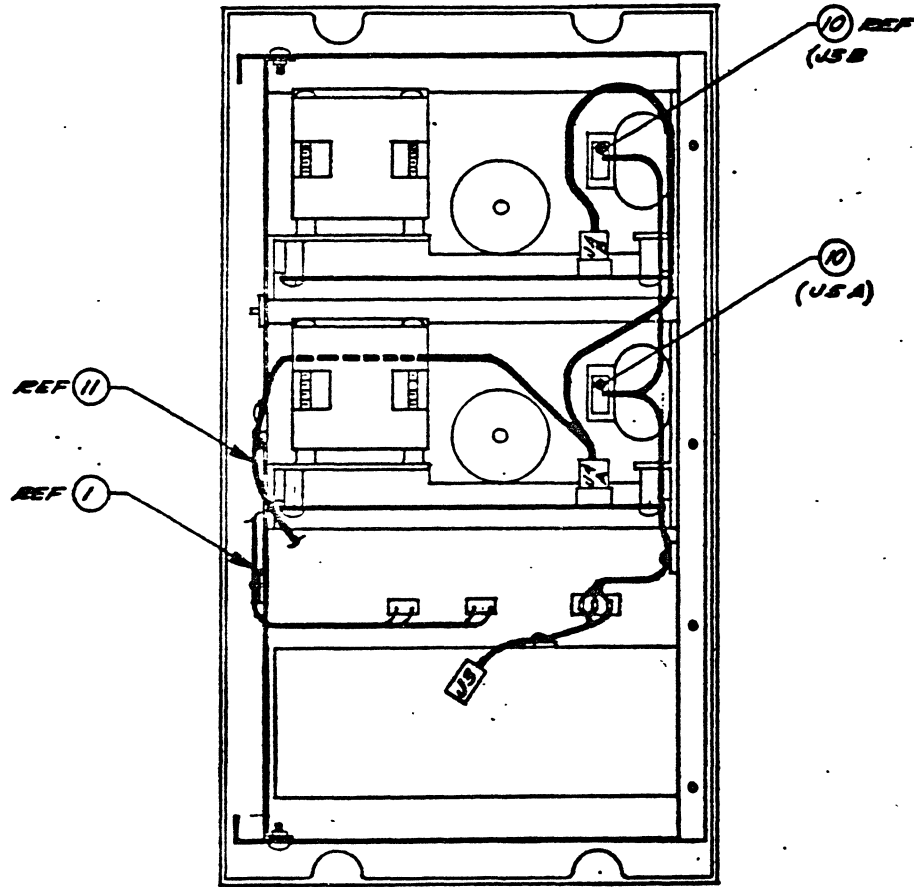
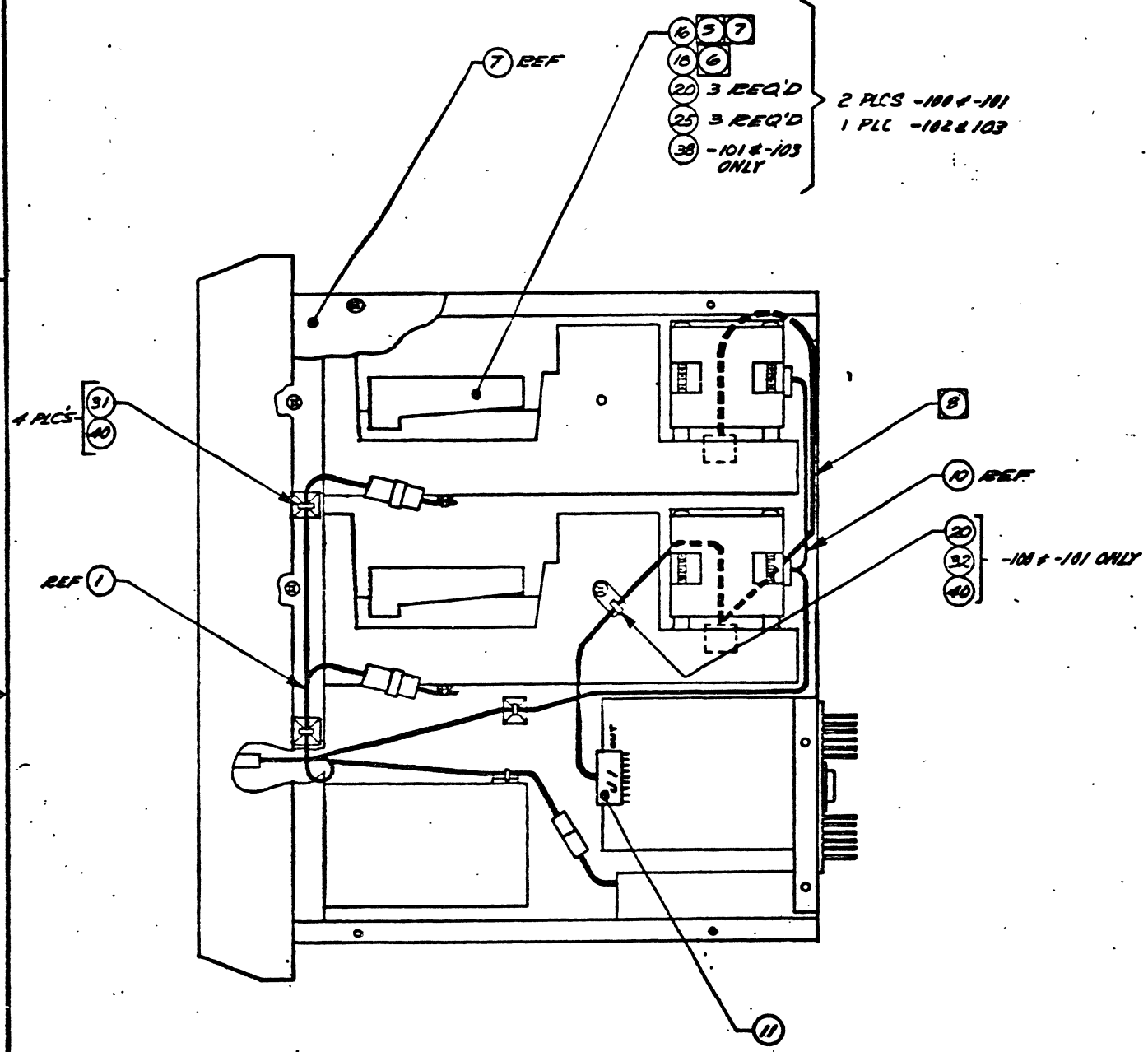
PRODUCTION RELEASE

D
C
B
A
703165

The information herein is the property of PLESSEY PERIPHERAL SYS.
 Transmittal, receipt or possession of the information does not constitute
 license or any other rights to use same or manufacture from the same.
 Reproduction or distribution of it in whole or in part, shall
 be made without written authorization from PLESSEY PERIPHERAL SYS.

REVISIONS				
ZONE	LTR	DESCRIPTION	DATE	APPROVED
		SEE SHEET 1		

703165



D
C
B
A

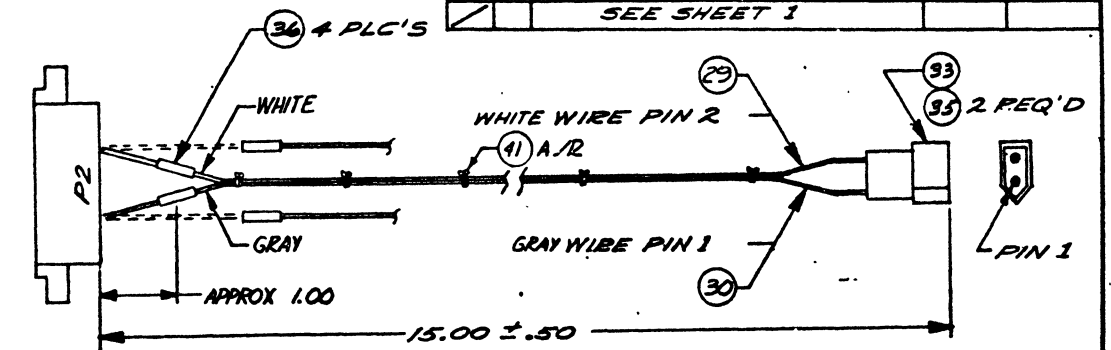
703165

SIZE	CODE IDENT NO.	DWG NO.
D	52648	703165
SCALE: 1/2	SHEET 2 OF 3	
DISTR NO.		

The information herein is the property of PLESSEY PERIPHERAL SYS
 Transmittal receipt or possession of the information does not convey
 license or imply any rights to use, sell, or manufacture from this infor-
 mation, and no reproduction or publication of it in whole or in part, shall
 be made without written authorization from PLESSEY PERIPHERAL SYS.

REVISIONS				
ZONE	LTR	DESCRIPTION	DATE	APPROVED
		SEE SHEET 1		

703165



VIEW D
 SCALE: NONE

WRITE PROTECT CABLE MODIFICATION

1. CUT GRAY WIRE COMING FROM P2-14.
2. CUT WHITE WIRE COMING FROM P2-18.
3. SPLICE 22 AWG GRAY WIRE AS SHOWN IN VIEW D.
4. SPLICE 22 AWG WHITE WIRE AS SHOWN IN VIEW D.
5. CAP REMAINING TWO WIRES WITH HEATSHRINK TUBING (ITEM 36) AND TIE BACK IN BUNDLE.

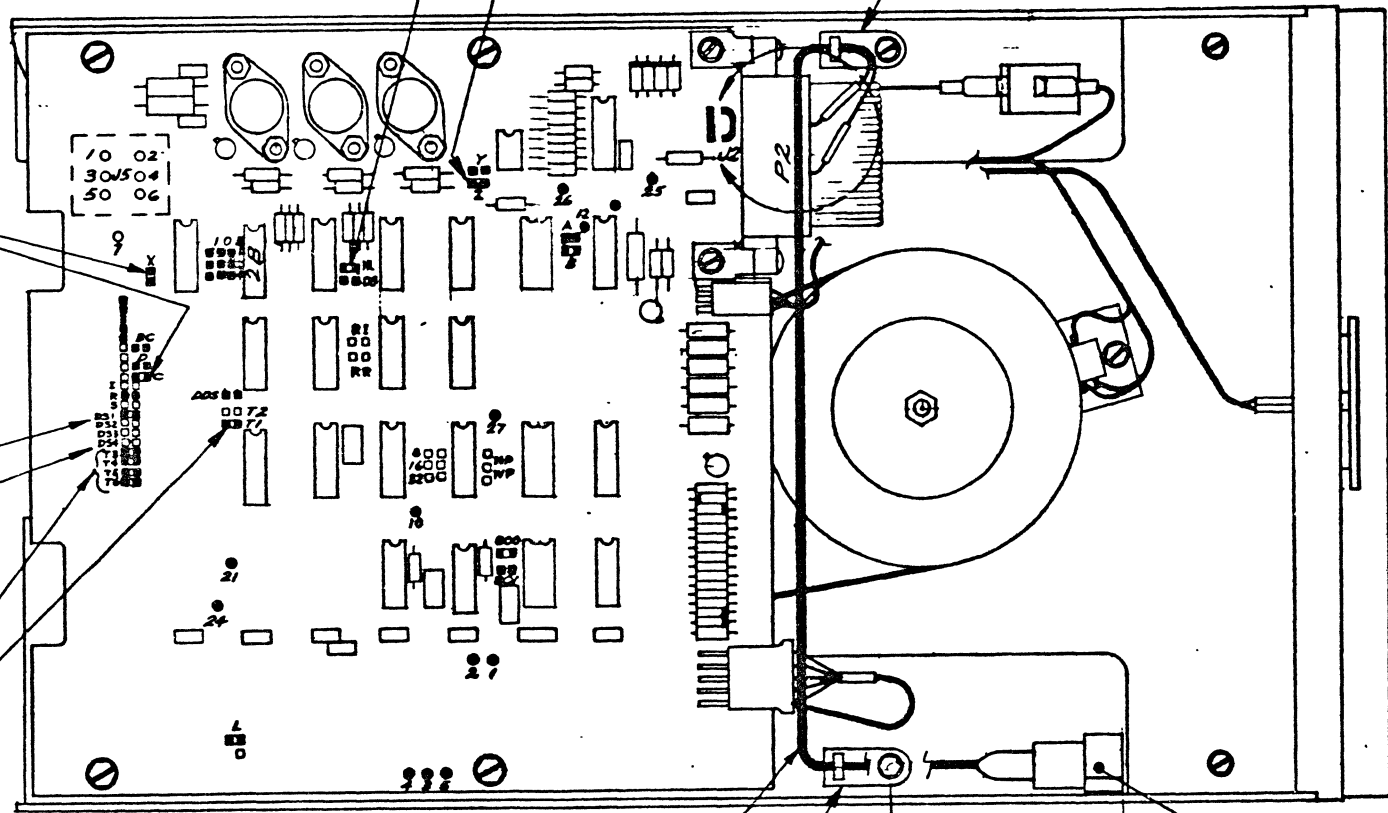
REMOVE JUMPER BLOCK FROM "X" AND MOVE TO "C".

REMOVE JUMPER BLOCK FROM HL AND MOVE TO DS.

REMOVE JUMPER BLOCK FROM "Z" AND MOVE TO "Y".

JUMPER BLOCK

LOCATION	DUAL DRIVE (-100 & -101)		SINGLE DRIVE (-102 & -103)
	DRIVE 0	DRIVE 1	DRIVE 0
DS1	YES	NO	YES
DS2	NO	YES	NO
DS3	NO	NO	NO
DS4	NO	NO	NO
T1	NO	YES	YES
T2	YES	YES	YES
T3	NO	YES	YES
T4	NO	YES	YES
T5	NO	YES	YES
T6	NO	YES	YES



CABLE TO BE TAUNTT BETWEEN CABLE TIE MOUNTS.

DRIVE MODIFICATION XDVII (DSD CONTROLLER)
 TYPICAL BOTH DRIVE "0" AND DRIVE "1"
 EXCEPT AS NOTED.

2.50 ± .15

SIZE	CODE IDENT NO.	DWG NO.
D	52648	703165
SCALE: 1/2	SHEET 3 OF 3	
DISTR NO.		

PARTS LIST	Plessey Microsystems	PREPARED BY	ROZEFUSKI	DATE	11-16-78	PARTS LIST NO.	PL703165-100	REV. LTR.	D
		CHECKED BY	J. Turak			CODE IDENT NO.	52648	12345700	SH 1
		DESIGNED BY	J. Turak	DATE	12-11-78	MODEL NO.		PM-X5VII	OF 5
		APPROVED BY	J. Turak	DATE	12-11-78				
CHASSIS ASSEMBLY DSD CONTROLLER, SHUGART MODIF. 60 HZ PM-X5VII									

REV. LTR.	DESCRIPTION	DATE	APPROVED	REV. LTR.	DESCRIPTION	DATE	APPROVED
A	REL TO PROD PER ED 5527	11-18-78	J. Turak				
B	INCorp EO3131	7-16-79	J. Turak				
C	INCorp EO3162	7-16-79	J. Turak				
D	INCorp ED 3826	9-9-80	J. Turak				

PRODUCTION RELEASE

REV. STATUS OF SHEETS	REV LTR	D	C	D	A	B											
SHEET		1	2	3	4	5	6	7	8	9	10						

PARTS LIST	Plessey Microsystems	CODE IDENT NO.	52648	PARTS LIST NO.	PL703165-100	SH	2	REV. LTR.	C

NOTE	QTY REQD	PART OR IDENTIFYING NO.	NOMENCLATURE OR DESCRIPTION	SPECIFICATION	CODE IDENT NO.	ZONE	FIN D	SYM	C/I USAGE								
									C/I CODE	INV OR HAND	P A R	UNIT COST					
	1	701734-100	SWITCH PANEL ASSY				1										
	1	701449-001	CHASSIS				2										
C	1	100051-001 OR 100160-100	POWER SUPPLY				3										
	1	701453-001	COVER, REAR				4										
	1	701457-001	BRACKET, SUPPORT				5										
	1	701456-001	STORAGE BOX				6										
	1	701452-001	COVER				7										
	2	701454-001	CLAMP, CABLE				8										
	1	701599-001	PANEL, FRONT				9										
	1	701348-100	CABLE ASSY A.C.				10										
	1	701349-100	CABLE ASSY D.C.				11										
	1	701104-001	LABEL, BLANK				12										
	1	700077-001	NAMEPLATE				13										

PARTS LIST	Plessey Microsystems	CODE IDENT NO.	52648	PARTS LIST NO.	PL703165-100	SH	3	REV. LTR.	D

NOTE	QTY REQD	PART OR IDENTIFYING NO.	NOMENCLATURE OR DESCRIPTION	SPECIFICATION	CODE IDENT NO.	ZONE	FIN D	SYM	C/I USAGE								
									C/I CODE	INV OR HAND	P A R	UNIT COST					
	1 PR.	701636-001	SLIDE, CHASSIS				14										
	1	701656-001	NAMEPLATE, SET				15										
D	2	850004	DISC, FLOPPY, 60 HZ	SHUGART			16										
	1	701109-001	DECAL, VOLTAGE SELECTION				17										
	2	50675	FRONT PANEL, DISC.	SHUGART			18										
	6	MS51958-61	SCREW / PAN HD.				19										
	17	MS51957-43	SCREW / PAN HD.				20										
	23	MS51957-27	SCREW / PAN HD.				21										
							22										
							23										
	6	MS35333-39	WASHER / LOCK-INTERNAL				24										
	18	MS-35333-38	WASHER / LOCK-INTERNAL				25										
	23	MS35333-37	WASHER / LOCK, INTERNAL				26										

PARTS LIST	Plessey Microsystems	CODE IDENT NO.	52648	PARTS LIST NO.	PL703165-100	SH	4	REV. LTR.	A

NOTE	QTY REQD	PART OR IDENTIFYING NO.	NOMENCLATURE OR DESCRIPTION	SPECIFICATION	CODE IDENT NO.	ZONE	FIN D	SYM	C/I USAGE								
									C/I CODE	INV OR HAND	P A R	UNIT COST					
	2	MS15795-807	WASHER, FLAT, NO. 8				27										
	30 IN.	7055/19-1	WIRE / 22 AWG, 19/34 STRAND	ALPHA WIRE			29										
	30 IN.	7055/19-9	WIRE / 22 AWG, 19/34 STRAND, IRRAD. PVC INSUL, COLOR: GRAY	ALPHA WIRE			30										
	4	ABMM-A	BASE, CABLE TIE	PANDUIT			31										
	5	TA158-M	BASE, CABLE TIE	PANDUIT			32										
	2	03-09-2022	PLUG, 2 CIRCUIT	MOLEX			33										
	1	MDA 3	FUSE, 3 AMP 250V SLOW BLOW	BUSSMANN			34										
	4	02-09-218	CONTACT, TERMINAL, CRIMP, MALE	MOLEX			35										
	6 IN.	FIT-105-1/8	TUBING, HEAT SHRINK, 1/8 DIA.	ALPHA WIRE			36										
	1 FT	5952	WIRE / 28 AWG, KYNAR INSUL, COLOR: OPTIONAL	ALPHA WIRE			37										
							38										
	2	MS35649-284	NUT, HEX, 8-32				39										

The information hereon is the property of PLESSEY PERIPHERAL SYS. Transmittal receipt or possession of the information does not imply license, or imply any rights to use, sell, or manufacture from this information and no reproduction or publication of it, in whole or in part, shall be made without written authorization from PLESSEY PERIPHERAL SYS.

SIZE B SCALE REV D SHEET 1 OF 2
 CODE IDENT NO. 52648
 DWG NO. PL 703165-100

PARTS LIST	Plessey Microsystems	PREPARED BY: <i>ZYDOLFIUSKI</i>	DATE: 11-16-78	PARTS LIST NO: PL703165-100	REV: D
CHASSIS ASSEMBLY		CHECKED BY: <i>J. Franklin</i>	DATE: 12-11-78	CODE IDENT NO: 52648	SH: 1
DSD CONTROLLER, SHUGART MODIF.		APPROVED BY: <i>J. Franklin</i>	DATE: 12-11-78	MODEL NO: PM-XSVII	OF: 5
60 Hz PM-XSVII		DOC CONTROL: <i>W.D. Cox</i>	DATE: 12-11-78		

LTN	DESCRIPTION	DATE	APPROVED	LTN	DESCRIPTION	DATE	APPROVED
A	REL TO PROD PER ED 5527	11-18-78	<i>[Signature]</i>				
B	INCORP E03131	7-16-79	<i>[Signature]</i>				
C	INCORP E03162	7-16-79	<i>[Signature]</i>				
D	INCORP ED 3826	9-9-80	<i>[Signature]</i>				

PRODUCTION RELEASE

REV STATUS OF SHEETS	REV LTR	D	C	D	A	B									
	SHEET	1	2	3	4	5	6	7	8	9	10				

PARTS LIST	Plessey Microsystems	CODE IDENT NO: 52648	PARTS LIST NO: PL703165-100	SH: 2	REV: C								
NOTE	QTY REQD	PART OR IDENTIFYING NO.	NOMENCLATURE OR DESCRIPTION	SPECIFICATION	CODE IDENT NO.	ZONE	FIN D	SYM	C/I USAGE				
									C/I CODE	INT ON HAND	P A R	UNIT COST	
	1	701734-100	SWITCH PANEL ASSY				1						
	1	701449-001	CHASSIS				2						
C	1	100057-001 OR 100160-100	POWER SUPPLY				3						
	1	701453-001	COVER, REAR				4						
	1	701457-001	BRACKET, SUPPORT				5						
	1	701456-001	STORAGE BOX				6						
	1	701452-001	COVER				7						
	2	701454-001	CLAMP, CABLE				8						
	1	701599-001	PANEL, FRONT				9						
	1	701348-100	CABLE ASSY A.C.				10						
	1	701349-100	CABLE ASSY D.C.				11						
	1	701104-001	LABEL, BLANK				12						
	1	700077-001	NAMEPLATE				13						

PARTS LIST	Plessey Microsystems	CODE IDENT NO: 52648	PARTS LIST NO: PL703165-100	SH: 3	REV: D								
NOTE	QTY REQD	PART OR IDENTIFYING NO.	NOMENCLATURE OR DESCRIPTION	SPECIFICATION	CODE IDENT NO.	ZONE	FIN D	SYM	C/I USAGE				
									C/I CODE	INT ON HAND	P A R	UNIT COST	
	1 PR.	701636-001	SLIDE, CHASSIS				14						
	1	701656-001	NAMEPLATE, SET				15						
D	2	850004	DISC, FLOPPY, 60 HZ	SHUGART			16						
	1	701109-001	DECAL, VOLTAGE SELECTION				17						
	2	50675	FRONT PANEL, DISC	SHUGART			18						
	6	MS51358-61	SCREW / PAN HD. 10-32 x 3/8 LG				19						
	17	MS51957-43	SCREW / PAN HD. 8-32 x 3/8 LG				20						
	23	MS51957-27	SCREW / PAN HD. 6-32 x 5/16 LG				21						
							22						
							23						
	6	MS35333-39	WASHER / LOCK-INTERNAL TOOTH NO. 10				24						
	18	MS-35333-38	WASHER / LOCK-INTERNAL TOOTH NO. 8				25						
	23	MS35333-37	WASHER / LOCK, INTERNAL TOOTH No. 6				26						

PARTS LIST	Plessey Microsystems	CODE IDENT NO: 52648	PARTS LIST NO: PL703165-100	SH: 4	REV: A								
NOTE	QTY REQD	PART OR IDENTIFYING NO.	NOMENCLATURE OR DESCRIPTION	SPECIFICATION	CODE IDENT NO.	ZONE	FIN D	SYM	C/I USAGE				
									C/I CODE	INT ON HAND	P A R	UNIT COST	
	2	MS15795-807	WASHER, FLAT, NO. 8				27						
	30 IN.	7055/19-1	WIRE / 22 AWG, 19/34 STRAND IRRAD PVC INSUL, COLOR: WHITE	ALPHA WIRE			28						
	30 IN.	7055/19-9	WIRE / 22 AWG, 19/34 STRAND, IRRAD. PVC INSUL, COLOR: GRAY	ALPHA WIRE			29						
	4	ABMM-A	BASE, CABLE TIE	PANDUIT			30						
	5	TA158-M	BASE, CABLE TIE	PANDUIT			31						
	2	03-09-2022	PLUG, 2 CIRCUIT	MOLEX			32						
	1	MDA 3	FUSE, 3 AMP 250V SLOIN BLOW	BUSSMANN			33						
	4	02-09-2118	CONTACT, TERMINAL, CRIMP, MALE	MOLEX			34						
	6 IN.	FIT-105-1/8	TUBING, HEAT SHRINK, 1/8 DIA.	ALPHA WIRE			35						
	1 FT	5952	WIRE / 28 AWG, KYNAR INSUL, COLOR: OPTIONAL	ALPHA WIRE			36						
	2	MS35699-289	NUT, HEX, 8-32				37						
							38						
							39						

The information hereon is the property of PLESSEY PERIPHERAL SYS. Transmittal, receipt or possession of the information does not imply license, or imply any rights to use, sell, or manufacture from this information and no reproduction or publication of it, in whole or in part, shall be made without written authorization from PLESSEY PERIPHERAL SYS.

SIZE **B** CODE IDENT NO. **52648** DWG NO. **PL 703165-100**
 SCALE **D** REV **D** SHEET **1** OF **2**

PARTS LIST		Plessey Peripheral Systems		CODE IDENT NO. 52648	PARTS LIST NO. PL 703165-100	SH <u>5</u>	REV <u>B</u>			
QTY REQD	PART OR IDENTIFYING NO.	NOMENCLATURE OR DESCRIPTION	SPECIFICATION	CODE IDENT NO.	ZONE	F I N D	S Y S T E M	C/I USAGE		
								C/I CODE	TRY ON HAND	P A R T
9	PLT 1.5M	CABLE TIE	PANDUIT			40				
12 IN.	LC-136	LACING, CORD	ALPHA WIRE			41				
						42				
						43				
B (9)	3.5 IN. NO. 4504 X 3/8 WIDE	FOAM TAPE, 1/4 THK X 3/8 WIDE	3M CO			44				

The information hereon is the property of PLESSEY PERIPHERAL SYS. Transmittal receipt or possession of the information does not comply, license, or imply any rights to use, sell, or manufacture from this information and no reproduction or publication of it, in whole or in part, shall be made without written authorization from PLESSEY PERIPHERAL SYS.

SIZE	CODE IDENT NO.	DWG NO.
B	52648	PL 703165-100
SCALE	REV	D
		SHEET 2 of 2

PARTS LIST	Plessey Microsystems	PREPARED BY <i>Polowski</i>	11-16-78	PL 703165-101	F
CHASSIS ASSEMBLY DSD CONTROLLER, SHUGART MODIF. 50 HZ PM-XSVII		CHECKED BY <i>S. G. ...</i>	11-17-78	CODE IDENT NO. 52648	SH 1 OF 5
		APPROVED BY <i>[Signature]</i>	12-11-78	MODEL NO. PM-XSVII	

REV LTR	DESCRIPTION	DATE	APPROVED	REV LTR	DESCRIPTION	DATE	APPROVED
A	REL TO PROD EO 5527	11-17-78	<i>[Signature]</i>				
B	INCRP EO 2881	2-21-79	<i>[Signature]</i>				
C	INCRP EO 3131	7-16-79	<i>[Signature]</i>				
D	INCRP EO 3162	7-16-79	<i>[Signature]</i>				
E	INCRP EO 3826 E-1	9-9-80	<i>[Signature]</i>				
F	INCRP EO 3854	9-10-80	<i>[Signature]</i>				

PRODUCTION RELEASE

REV STATUS OF SHEETS	REV LTR	F	D	E	S	F								
SHEET		1	2	3	4	5	6	7	8	9	10			

PARTS LIST	Plessey Microsystems	CODE IDENT NO. 52648	PL 703165-101	SH 3	E								
NOTE	QTY REQD	PART OR IDENTIFYING NO.	NOMENCLATURE OR DESCRIPTION	SPECIFICATION	CODE IDENT NO.	ZONE	F I N O D	S Y M	C/I USAGE				
	1 PR.	701636-001	SLIDE, CHASSIS				14						
	1	701656-001	NAME PLATE, SET				15						
E (5)	2	850004	DISC, FLOPPY	SHUGART			16						
	1	701109-001	DECAL, VOLTAGE SELECTION				17						
(6)	2	50675	FRONT PANEL, DISC	SHUGART			18						
	6	MS51958-61	SCREW / PAN HD.				19						
	17	MS51957-43	SCREW / PAN HD.				20						
	23	MS51957-27	SCREW / PAN HD.				21						
							22						
							23						
	6	MS35333-39	WASHER / LOCK-INTERNAL				24						
	18	MS-35333-38	WASHER / LOCK-INTERNAL.				25						
	23	MS35333-37	WASHER / LOCK INTERNAL				26						

PARTS LIST	Plessey Microsystems	CODE IDENT NO. 52648	PL 703165-101	SH 2	D								
NOTE	QTY REQD	PART OR IDENTIFYING NO.	NOMENCLATURE OR DESCRIPTION	SPECIFICATION	CODE IDENT NO.	ZONE	F I N O D	S Y M	C/I USAGE				
	1	701734-100	SWITCH PANEL ASSY				1						
	1	701449-001	CHASSIS				2						
D	1	100057-001 OR 100160-100	POWER SUPPLY				3						
	1	701453-001	COVER, REAR				4						
	1	701457-001	BRACKET, SUPPORT				5						
	1	701456-001	STORAGE BOX				6						
	1	701452-001	COVER				7						
	2	701454-001	CLAMP, CABLE				8						
	1	701544-001	PANEL, FRONT				9						
	1	701348-100	CABLE ASSY A.C.				10						
	1	701349-100	CABLE ASSY D.C.				11						
	1	701104-001	LABEL, BLANK				12						
	1	700077-001	NAMEPLATE				13						

PARTS LIST	Plessey Microsystems	CODE IDENT NO. 52648	PL 703165-101	SH 4	B								
NOTE	QTY REQD	PART OR IDENTIFYING NO.	NOMENCLATURE OR DESCRIPTION	SPECIFICATION	CODE IDENT NO.	ZONE	F I N O D	S Y M	C/I USAGE				
	2	MS15795-807	WASHER, FLAT. NO. 8				27						
	.30 IN.	7055/19-1	WIRE / 22 AWG, 3/4 STRAND, IRRAD.	ALPHA WIRE			28						
	.30 IN.	7055/19-9	WIRE / 22 AWG, 3/4 STRAND, IRRAD.	ALPHA WIRE			29						
	4	ABMM-A	BASE, CABLE TIE	PANDUIT			30						
	5	TA158-M	BASE, CABLE TIE	PANDUIT			31						
	2	03-09-2022	PLUG, 2 CIRCUIT	MOLEX			32						
	1	MDA 1/2	FUSE / 1.5 AMP, 250 V, SLOW BLOW	BUSSMAN			33						
	4	02-09-2118	CONTACT, TERMINAL, CRIMP, MALE	MOLEX			34						
	6 IN.	FIT-105-1/8	TUBING, HEAT SHRINK, 1/8 DIA.	ALPHA WIRE			35						
	1 FT	5952	WIRE / 28 AWG, KYNAR INSUL., COLOR OPTIONAL	ALPHA WIRE			36						
B (5)	2	50357	DRIVE PULLEY, 50 HZ.	SHUGART			37						
	2	MS35649-281	NUT, HEX, 8-32				38						
							39						

The information hereon is the property of PLESSEY PERIPHERAL SYS. Transmittal receipt or possession of the information does not imply, license, or imply any rights to use, sell, or manufacture from this information and no reproduction or publication of it, in whole or in part, shall be made without written authorization from PLESSEY PERIPHERAL SYS.

CODE IDENT NO. DWG NO. PL 703165-101
 SIZE B SCALE REV F SHEET 1 OF 2

PARTS LIST		Plessey Peripheral Systems		CODE IDENT NO.	PARTS LIST NO.	SH	REV						
				52648	PL 703165-101	5	F						
QTY REQ	PART OR IDENTIFYING NO.	NOMENCLATURE OR DESCRIPTION	SPECIFICATION	CODE IDENT NO.	ZONE	F I R D	S Y M	C/I USAGE					
								C/I CODE	INV ON HAND	P A R	WRT CRST		
	9	PLT 1.5M	CABLE TIE										
	12 IN.	LC-136	LACING CORD										
F	2	50355	BELT, DRIVE 50Hz	SHUGART									
C	⑨ 3.5 IN.	NO. 4504 X 3/8 WIDE	FOAM TAPE, 1/4 THK X 3/8 WIDE	3M CO									

The information hereon is the property of PLESSEY PERIPHERAL SYS. Transmittal receipt or possession of the information does not imply, license, or imply any rights to use, sell, or manufacture from this information and no reproduction or publication of it, in whole or in part, shall be made without written authorization from PLESSEY PERIPHERAL SYS.

SIZE **B** CODE IDENT NO. DWG NO. PL 703165-101
 SCALE REV **F** SHEET 2 of 2

PARTS LIST	Plessey Peripheral Systems		PREPARED BY: J. Mianke	2-16-79	PL 703165-102	REV LTR: D
	CHASSIS ASSEMBLY DSD CONTROLLER, SHUGART MODIF. 60 HZ PM-XSVII		CHECKED BY: J. Frankis	2-21-79	CODE IDENT NO. 52648	SH 1 OF 5
			RES'D ENG: J. V. [unclear]	2/21/79	MODEL NO.	
			APPRV: [unclear]	3-1-79		

LTR	DESCRIPTION	DATE	APPROVED	LTR	DESCRIPTION	DATE	APPROVED
A	REL TO PROD EO 2884	2-21-79	[Signature]				
B	INCORP EO3131	7-16-79	[Signature]				
C	INCORP EO3162	7-16-79	[Signature]				
D	INCORP EO3826	9-9-80	[Signature]				

PRODUCTION RELEASE

REV STATUS OF SHEETS	REV LTR	D	C	D	A	B												
SHEET		1	2	3	4	5	6	7	8	9	10							

NOTE	QTY REQD	PART OR IDENTIFYING NO.	NOMENCLATURE OR DESCRIPTION	SPECIFICATION	CODE IDENT NO.	ZONE	FIN D	SY H	C/I USAGE				
									C/I CODE	INV ON HAND	P A R	UNIT COST	
	1 PR.	7016316-001	SLIDE, CHASSIS						14				
	1	701656-001	NAMEPLATE, SET						15				
D	1	850004	DISC, FLOPPY, 60 HZ	SHUGART					16				
	1	701109-001	DECAL, VOLTAGE SELECTION						17				
6	1	50675	FRONT PANEL, DISC.	SHUGART					18				
	6	MS51958-61	SCREW / PAN HD. 10-32 x 3/8 LG						19				
	13	MS51957-13	SCREW / PAN HD. 8-32 x 3/8 LG						20				
	21	MS51957-27	SCREW / PAN HD. 6-32 x 5/16 LG						21				
									22				
									23				
	6	MS35333-39	WASHER / LOCK-INTERNAL TOOTH NO. 10						24				
	15	MS-35333-38	WASHER / LOCK-INTERNAL TOOTH NO. 8						25				
	21	MS35333-37	WASHER / LOCK, INTERNAL TOOTH NO. 6						26				

NOTE	QTY REQD	PART OR IDENTIFYING NO.	NOMENCLATURE OR DESCRIPTION	SPECIFICATION	CODE IDENT NO.	ZONE	FIN D	SY H	C/I USAGE				
									C/I CODE	INV ON HAND	P A R	UNIT COST	
	1	701734-100	SWITCH PANEL ASSY						27				
	1	701449-001	CHASSIS						28				
C	1	100057-001 OR 100160-100	POWER SUPPLY						29				
	1	701453-001	COVER, REAR						30				
	1	701457-001	BRACKET, SUPPORT						31				
	1	701456-001	STORAGE BOX						32				
	1	701452-001	COVER						33				
	1	701454-001	CLAMP, CABLE						34				
	1	701511-001	PANEL, FRONT						35				
	1	701348-100	CABLE ASSY A.C.						36				
	1	701349-130	CABLE ASSY D.C.						37				
	1	701104-001	LABEL, BLANK						38				
	1	700077-001	NAMEPLATE						39				

The information hereon is the property of PLESSEY PERIPHERAL SYS. Transmittal receipt or possession of the information does not imply, license, or imply any rights to use, sell, or manufacture from this information and no reproduction or publication of it, in whole or in part, shall be made without written authorization from PLESSEY PERIPHERAL SYS.

SIZE B
 CODE IDENT NO. 52648
 DWG NO. PL 703165-102
 SCALE REV D
 SHEET 1 OF 2

PARTS LIST		Plessey Peripheral Systems		CODE IDENT NO.	PLATE NO.	SH	REV					
				52648	PL 703165-102	5	B					
QTY REQD	PART OR IDENTIFYING NO.	NOMENCLATURE OR DESCRIPTION	SPECIFICATION	CODE IDENT NO.	ZONE	F I N O	S T H	C/I USAGE				
								C/I CODE	INT ON HAND	P A R	WHIT EXST	
10	PLT 1.5M	CABLE TIE	PANDUIT			40						
6 IN.	LC-136	LACING, CORD	ALPHA WIRE			41						
						42						
1	701459-001	COVER, BLANK				43						
B (9)	1.75 IN. NO. 4504 X 3/8 WIDE	FOAM TAPE, 1/4 THK X 3/8 WIDE	3M CO			44						

The information hereon is the property of PLESSEY PERIPHERAL SYS. Transmittal receipt or possession of the information does not imply license, or imply any rights to use, sell, or manufacture from this information, and no reproduction or publication of it in whole or in part, shall be made without written authorization from PLESSEY PERIPHERAL SYS.

SIZE	CODE IDENT NO.	DWG NO.
B	52648	PL 703165-102
SCALE	REV	SHEET
	D	2 of 2

PARTS LIST	Plessey Peripheral Systems	PREPARED BY <i>W. Encise</i>	2-16-79	PARTS LIST NO. PL 703165-103	REV. LTR D
		CHECKED BY <i>J. Turkis</i>	2-21-79	CODE IDENT NO. 52648	SH 1
		RES. ENG. <i>W. Key</i>	3/22/79	12345780	OF 5
		APPRY		MODEL NO.	
		DOC CONTROL <i>W. Low</i>	3-1-79		

LTR	DESCRIPTION	DATE	APPROVED	LTR	DESCRIPTION	DATE	APPROVED
A	REL TO PROD EO 2884	2-21-79	<i>W. Encise</i>				
B	INCPOR EO 3131	7-16-79	<i>W. Encise</i>				
C	INCPOR EO 3162	7-16-79	<i>W. Encise</i>				
D	INCPOR EO 3826 & -1	9-9-80	<i>W. Encise</i>				

PRODUCTION RELEASE

REV STATUS	REV LTR	D	C	D	A	B											
SH	SHEET	1	2	3	4	5	6	7	8	9	10						

PARTS LIST		Plessey Microsystems		CODE IDENT NO.	PARTS LIST NO.	SH	REV. LTR										
				52648	PL 703165-103	3	D										
NOTE	QTY REQD	PART OR IDENTIFYING NO.	NOMENCLATURE OR DESCRIPTION	SPECIFICATION	CODE IDENT NO.	ZONE	F I N D	S Y H	C/I USAGE								
	1 PR.	701636-001	SLIDE, CHASSIS				14										
	1	701656-001	NAME PLATE, SET				15										
D 5	1	850004	DISC, FLOPPY	SHUGART			16										
	1	701109-001	DECAL, VOLTAGE SELECTION				17										
6	1	50675	FRONT PANEL, DISC	SHUGART			18										
	6	MS51958-61	SCREW / PAN HD.				19										
	13	MS51957-43	SCREW / PAN HD.				20										
	21	MS51957-27	SCREW / PAN HD.				21										
							22										
							23										
	6	MS35333-39	WASHER / LOCK-INTERNAL				24										
	15	MS-35333-38	WASHER / LOCK-INTERNAL				25										
	21	MS35333-37	WASHER / LOCK INTERNAL				26										

PARTS LIST		Plessey Microsystems		CODE IDENT NO.	PARTS LIST NO.	SH	REV. LTR										
				52648	PL 703165-103	2	C										
NOTE	QTY REQD	PART OR IDENTIFYING NO.	NOMENCLATURE OR DESCRIPTION	SPECIFICATION	CODE IDENT NO.	ZONE	F I N D	S Y H	C/I USAGE								
	1	701734-100	SWITCH PANEL ASSY				1										
	1	701449-001	CHASSIS				2										
C	1	100057-001 OR 100160-100	POWER SUPPLY				3										
	1	701453-001	COVER, REAR				4										
	1	701457-001	BRACKET, SUPPORT				5										
	1	701456-001	STORAGE BOX				6										
	1	701452-001	COVER				7										
	1	701454-001	CLAMP, CABLE				8										
	1	701544-001	PANEL, FRONT				9										
	1	701348-100	CABLE ASSY A.C.				10										
	1	701349-100	CABLE ASSY D.C.				11										
	1	701104-001	LABEL, BLANK				12										
	1	700077-001	NAMEPLATE				13										

PARTS LIST		Plessey Microsystems		CODE IDENT NO.	PARTS LIST NO.	SH	REV. LTR										
				52648	PL 703165-103	4	A										
NOTE	QTY REQD	PART OR IDENTIFYING NO.	NOMENCLATURE OR DESCRIPTION	SPECIFICATION	CODE IDENT NO.	ZONE	F I N D	S Y H	C/I USAGE								
							27										
	2	MS15795-807	WASHER, FLAT, NO. 8				28										
	15 IN.	7055119-1	WIRE / 22 AWG, 19 STRAND, IRRAD.				29										
	15 IN.	7055119-9	WIRE / 22 AWG, 19 STRAND, IRRAD.				30										
	7	ABMM-A	BASE, CABLE TIE				31										
	2	TA158-M	BASE, CABLE TIE				32										
	1	03-09-2022	PLUG, 2 CIRCUIT				33										
	1	MDA1 1/2	FUSE / 1.5 AMP, 250 V, SLOW BLOW				34										
	2	02-09-2118	CONTACT, TERMINAL, CRIMP, MALE				35										
	3 IN.	FIT-105-1/8	TUBING, HEAT SHRINK, 1/8 DIA.				36										
	1 FT	5952	WIRE / 28 AWG, KYNAR INSUL, COLOR OPTIONAL				37										
5	1	50357	DRIVE PULLEY, 50 HZ.	SHUGART			38										
	2	MS35643-281	NUT, HEX, 3-32				39										

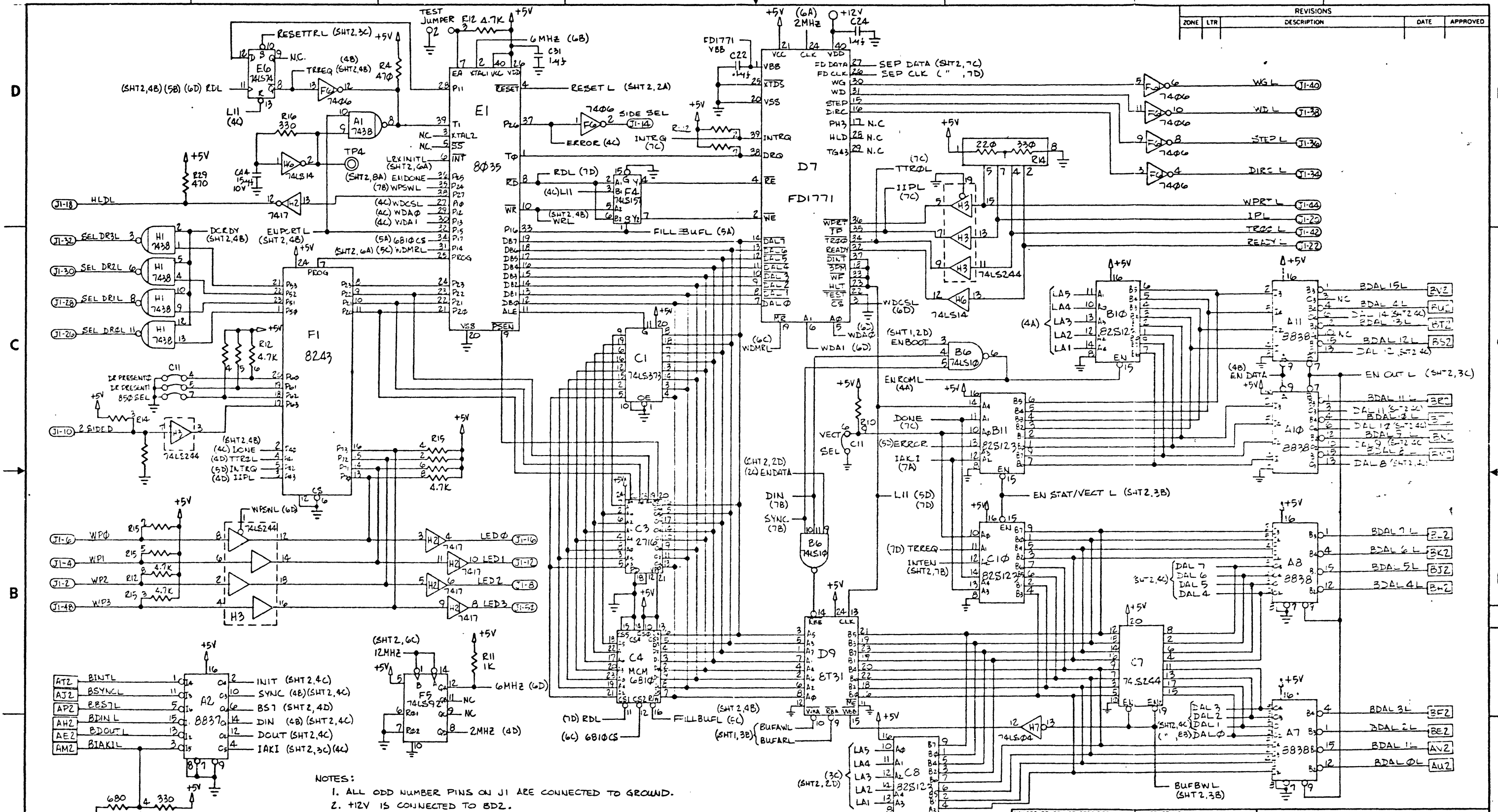
SIZE **B** CODE IDENT NO. **52648** DWG NO. **PL 703165-103**
 SCALE **REV D** SHEET **1 OF 2**
 The information hereon is the property of PLESSEY PERIPHERAL SYS. Transmittal receipt or possession of the information does not imply license, or imply any rights to use, sell, or manufacture from this information, and no reproduction or publication of it, in whole or in part, shall be made without written authorization from PLESSEY PERIPHERAL SYS.

PARTS LIST		Plessey Peripheral Systems		CODE IDENT NO. PARTS LIST NO.		SH 5		REV B			
QTY REQD	NOTE	PART OR IDENTIFYING NO.	NOMENCLATURE OR DESCRIPTION	SPECIFICATION	CODE IDENT NO.	ZONE	FIN NO.	S T H	C/I USAGE		
									C/I CODE	INT OR HAND	P A R
10		PLT1.5M	CABLE TIE	PANDUIT.			40				
6 IN.		LC-136	LACING CORD	ALPHA WIRE			41				
1		50355	BELT, DRIVE 50HZ	SHUGART			42				
1		701459 -001	COVER, BLANK				43				
B	9	175 IN. NO. 4504 X 3/8 WIDE	FOAM TAPE, 1/4 THK X 3/8 WIDE	3M CO			44				

The information hereon is the property of PLESSEY PERIPHERAL SYS.
 Transmittal receipt or possession of the information does not comply.
 license, or imply any rights to use, sell, or manufacture from this infor-
 mation and no reproduction or publication of it, in whole or in part, shall
 be made without written authorization from PLESSEY PERIPHERAL SYS.

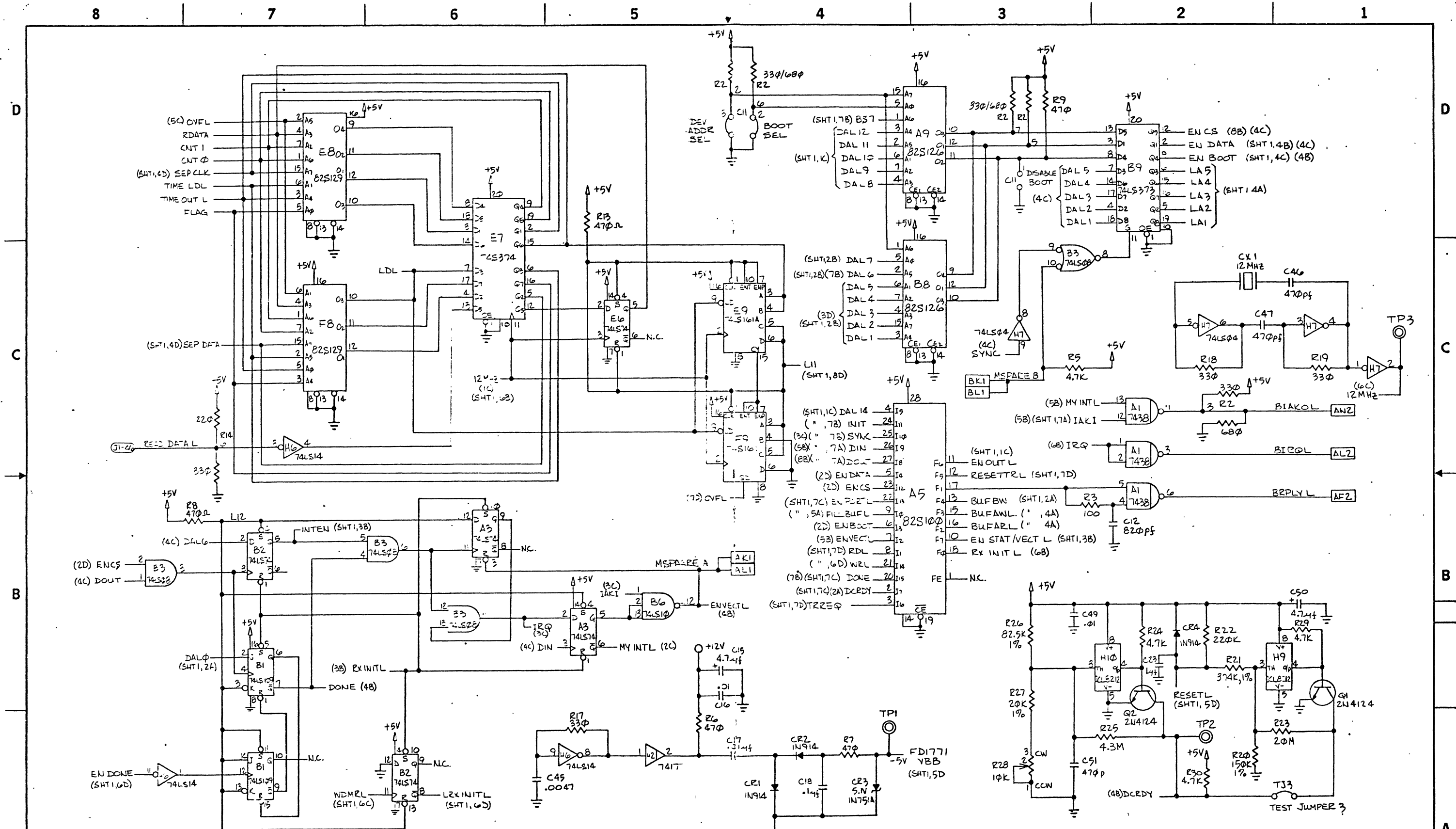
SIZE **B** CODE IDENT NO. 52648 DWG NO. PL 703165-103
 SCALE REV D SHEET 2 of 2

ZONE		LTR		REVISIONS	DATE	APPROVED
				DESCRIPTION		



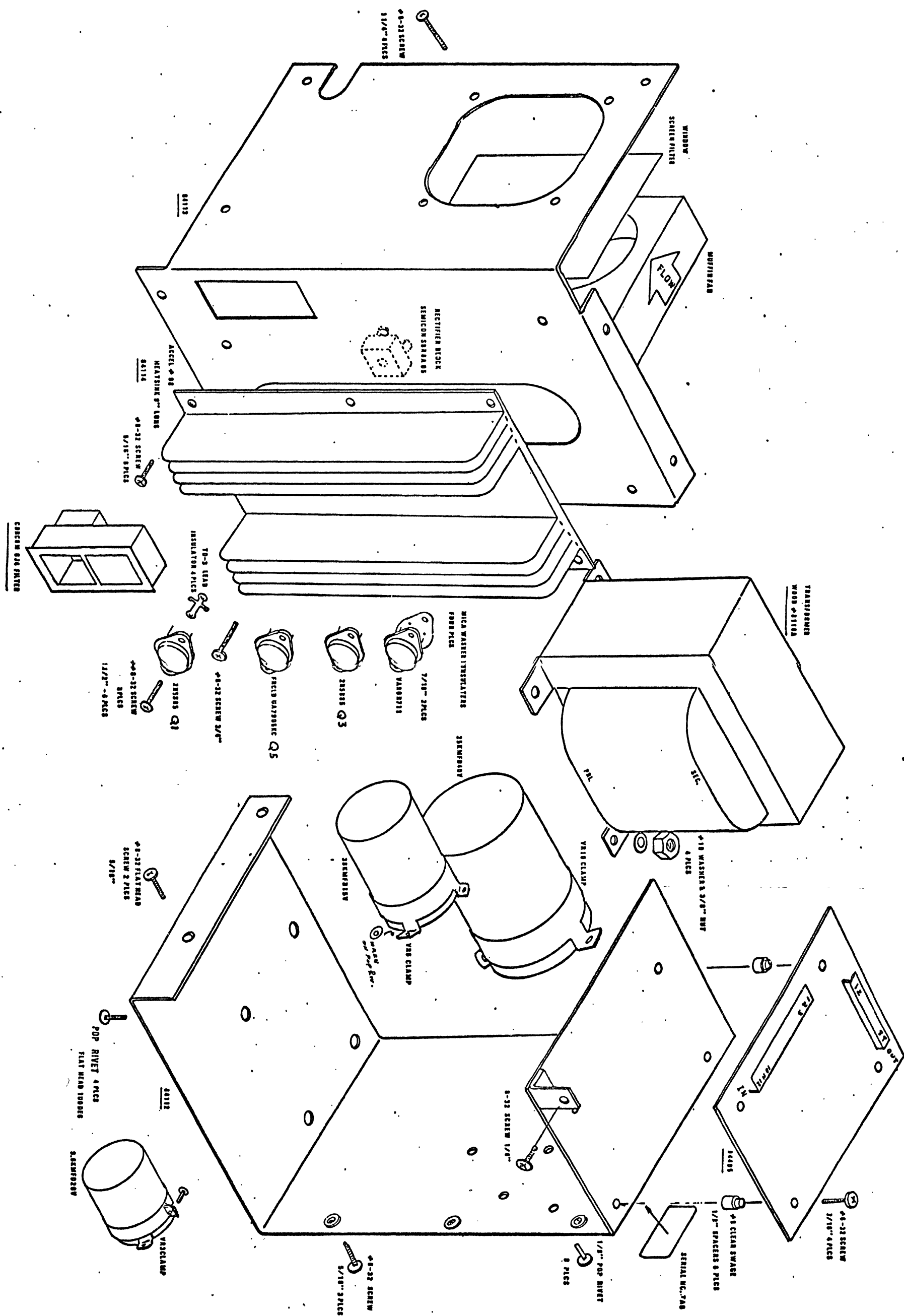
- NOTES:
1. ALL ODD NUMBER PINS ON J1 ARE CONNECTED TO GROUND.
 2. +12V IS CONNECTED TO BD2.
 3. +5V IS CONNECTED TO BV1, AA2.
 4. GND IS CONNECTED TO AJ1, BM1, BT1, AC2.
 5. C3 (100µf), C1, C4, C42 (1µf), C2, C5, C6, C7, C8, C9, C10, C11, C13, C14, C19, C20, C21, C25, C26, C27, C28, C32, C33, C34, C35, C38, C39, C40, C41, C48, C49 (.01µf) WHICH ARE NOT SHOWN IN THE SCHEMATICS, ARE BYPASS CAPACITORS.

UNLESS OTHERWISE SPECIFIED DIMENSIONS ARE IN INCHES TOLERANCES ARE FRACTIONS DECIMALS ANGLES ± .010 ± .005 ± .001		CONTRACT NO.		DATE	
MATERIAL		APPROVALS		DATE	
FINISH		DRAWN J. MOISE		2-15-78	
DO NOT SCALE DRAWING		CHECKED T. SO		3-20-78	
SCALE		SIZE		CODE IDENT NO	
		D		S/1140-2	
		DRAWING NO		SHEET 1 OF 2	



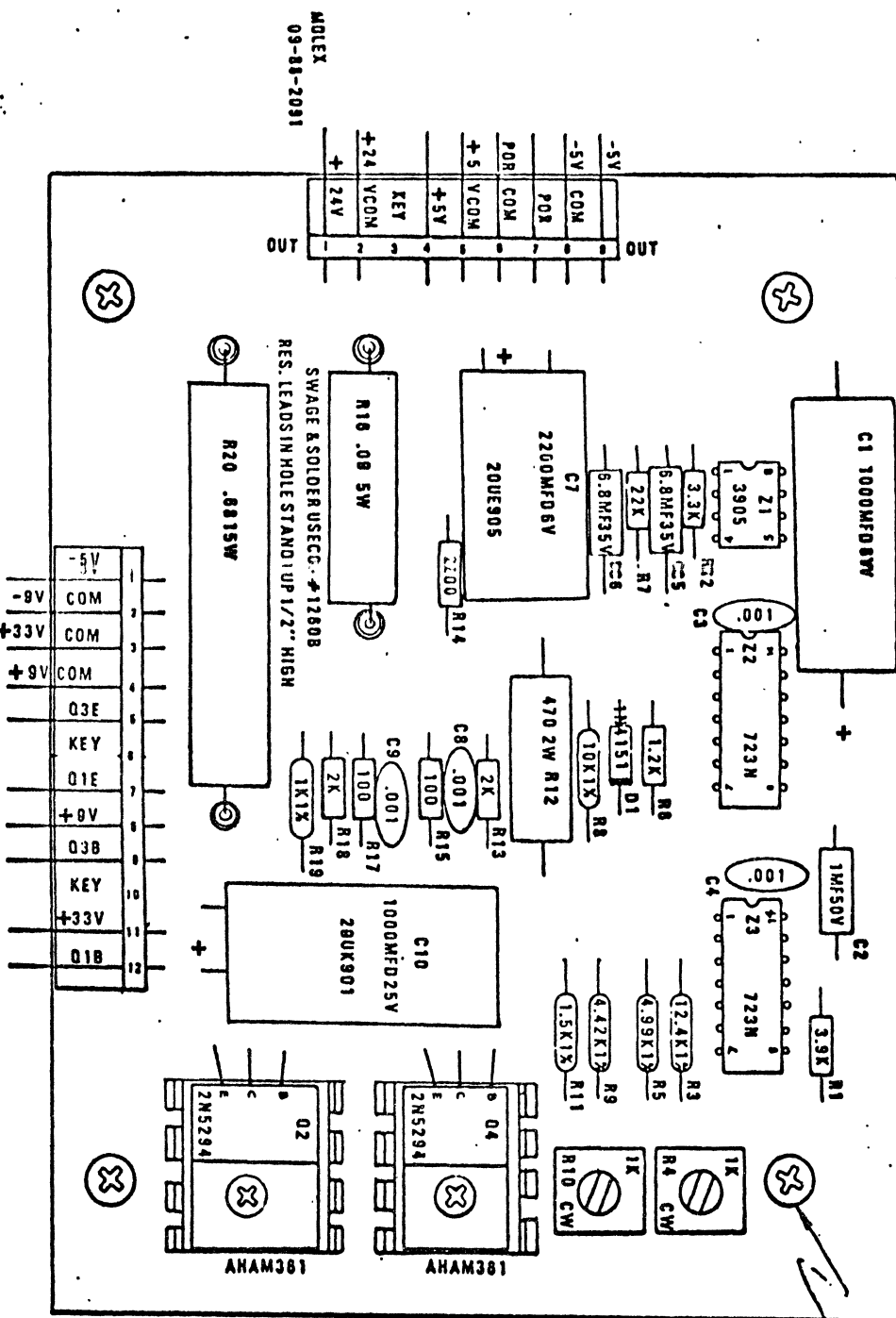
DSD 110-FLOPPY DISK CONTROLLER

DATA Systems		
SIZE	CODE IDENT NO	DRAWING NO.
D		S/1140-6
SCALE	SHEET 2 OF 2	



The information hereon is the property of PLESSEY PERIPHERAL SYS. Transmittal receipt or possession of the information does not comply, license, or imply any rights to use, sell, or manufacture from this information and no reproduction or publication of it, in whole or in part, shall be made without written authorization from PLESSEY PERIPHERAL SYS.		SIZE B	CODE IDENT NO. 52648	DWG NO. 64111
SCALE	REV	3-29-77	SHEET 1 of 1	

Form 000087



MOLEX
09-88-2091

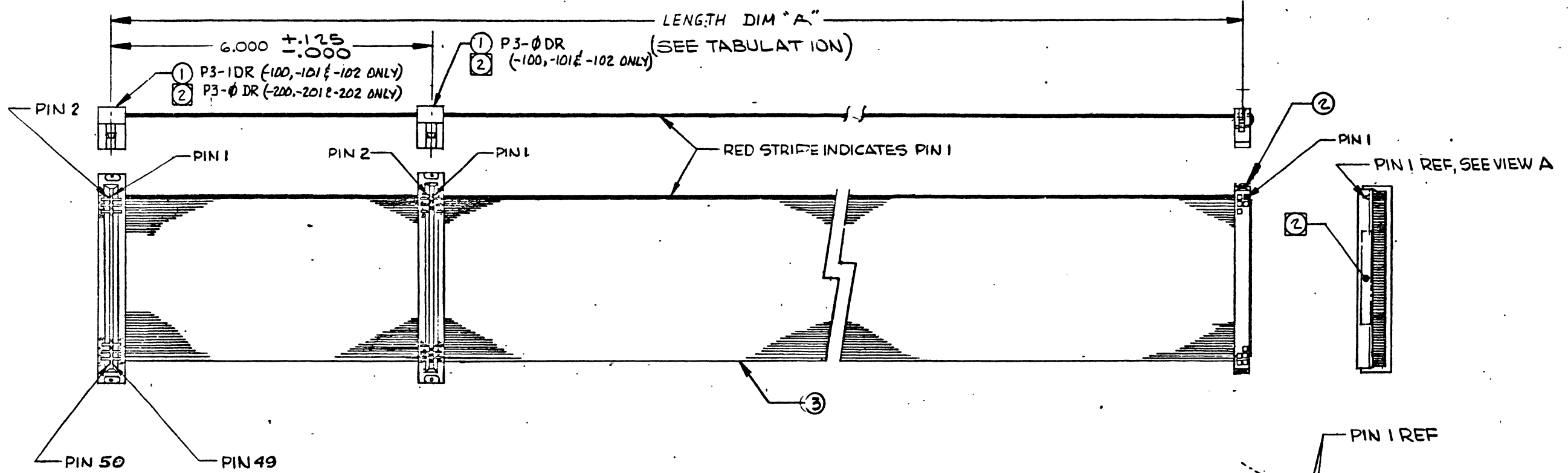
MOLEX 09-88-2121

*125 SPACES
FR SIDE
PLCS*

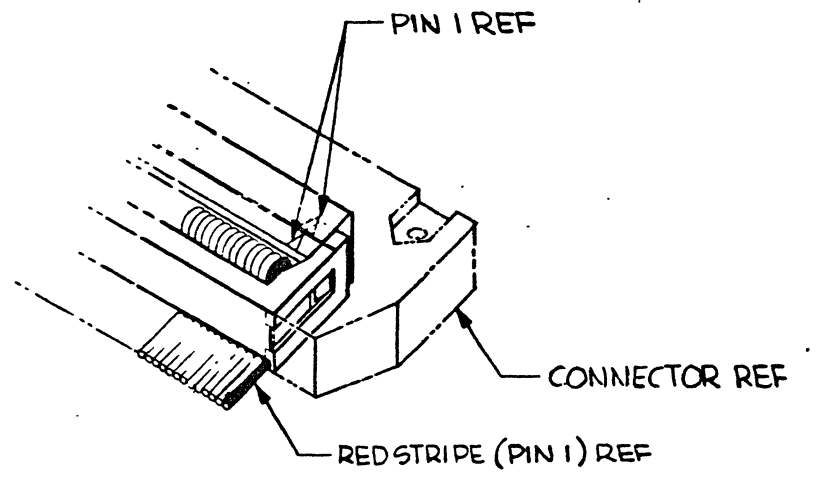
The information hereon is the property of PLESSEY PERIPHERAL SYS. Transmittal receipt or possession of the information does not comply, license, or imply any rights to use, sell, or manufacture from this information and no reproduction or publication of it, in whole or in part, shall be made without written authorization from PLESSEY PERIPHERAL SYS.	SIZE	CODE IDENT NO.	DWG NO.
	B	52648	64405
SCALE	REV	11-11-76	SHEET 1 of 2

The information herein is the property of PLESSEY MICROSYSTEMS. Transmittal receipt or possession of the information does not constitute, in whole or in part, a license, or imply any right to use, sell, or manufacture from this information and no reproduction or publication of it, in whole or in part, shall be made without written authorization from PLESSEY MICROSYSTEMS.

ZONE		LTR		REVISIONS	DATE	APPROVED
A		REL TO PROD PER		PER E05209	10-31-78	[Signature]



TABULATION	
ASSY NO	LENGTH "A" (INCHES)
-100	96.00 ±.00
-101	120.00 ±.00
-102	180.00 ±.00
-200	96.00 +2.00 -.00
-201	120.00 +4.00 -.00
-202	180.00 +6.00 -.00



VIEW A
SCALE: NONE
INSTALLATION VIEW

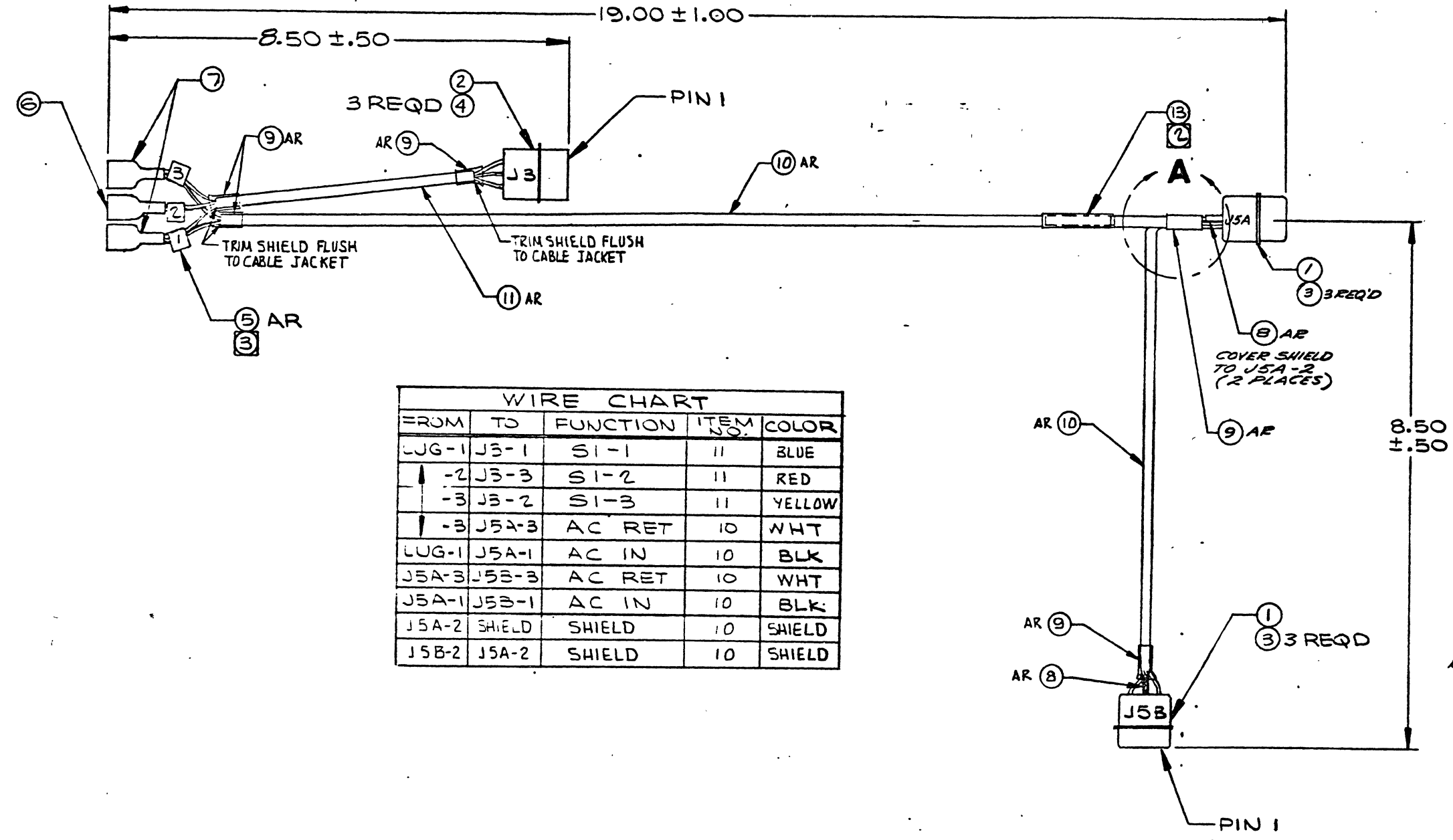
PRODUCTION RELEASE

PART/ASSY NO. & QTY PER ASSY		PARTS LIST		NOTE	CONTRACT NO.	SIZE	CODE IDENT NO.	DWG NO.																																							
A	A	A	A	A		D	52648	701803																																							
<table border="1"> <tr> <td>DO NOT SCALE DRAWING</td> <td>CONTRACT NO.</td> </tr> <tr> <td>BORER THREADS PER HANDBOOK H-8</td> <td></td> </tr> <tr> <td>COUNTERBORE AND SPOTFACE FILLET RADI TO BE AS MAXIMUM</td> <td></td> </tr> <tr> <td>REMOVE ALL BURRS AND BREAK SHARP EDGES EQUIVALENT TO J60</td> <td></td> </tr> <tr> <td>ROUNDNESS OF MACHINED SURFACES BY PER USAS T14.5</td> <td></td> </tr> <tr> <td>STANDARD HOLE TOLERANCE PER AND 2007</td> <td></td> </tr> <tr> <td>TOLERANCES ON .03" & .05" DIA HOLES BY 2007</td> <td></td> </tr> <tr> <td>INTERPRET DIMENSIONS AND TOLERANCES PER USAS T14.5</td> <td></td> </tr> <tr> <td>DIMENSIONS ARE IN INCHES AND APPLY AFTER HEAT TREAT AND FINISH UNLESS OTHERWISE SPECIFIED</td> <td></td> </tr> </table>				DO NOT SCALE DRAWING	CONTRACT NO.	BORER THREADS PER HANDBOOK H-8		COUNTERBORE AND SPOTFACE FILLET RADI TO BE AS MAXIMUM		REMOVE ALL BURRS AND BREAK SHARP EDGES EQUIVALENT TO J60		ROUNDNESS OF MACHINED SURFACES BY PER USAS T14.5		STANDARD HOLE TOLERANCE PER AND 2007		TOLERANCES ON .03" & .05" DIA HOLES BY 2007		INTERPRET DIMENSIONS AND TOLERANCES PER USAS T14.5		DIMENSIONS ARE IN INCHES AND APPLY AFTER HEAT TREAT AND FINISH UNLESS OTHERWISE SPECIFIED		<table border="1"> <tr> <td>DRAWN</td> <td>701803-200</td> </tr> <tr> <td>CHECKED</td> <td>10-31-78</td> </tr> <tr> <td>ENGR</td> <td></td> </tr> <tr> <td>PROJ. ENGR</td> <td>10-31-78</td> </tr> <tr> <td>PROD. DESIGN</td> <td></td> </tr> <tr> <td>OTHER APPROVALS</td> <td></td> </tr> </table>		DRAWN	701803-200	CHECKED	10-31-78	ENGR		PROJ. ENGR	10-31-78	PROD. DESIGN		OTHER APPROVALS		<table border="1"> <tr> <td>PL 701803-200</td> <td>FOR PARTS LIST SEE</td> </tr> <tr> <td>PL 701803-102</td> <td>FOR PARTS LIST SEE</td> </tr> </table>		PL 701803-200	FOR PARTS LIST SEE	PL 701803-102	FOR PARTS LIST SEE	<table border="1"> <tr> <td>PL 701803-200</td> <td>FOR PARTS LIST SEE</td> </tr> <tr> <td>PL 701803-102</td> <td>FOR PARTS LIST SEE</td> </tr> </table>		PL 701803-200	FOR PARTS LIST SEE	PL 701803-102	FOR PARTS LIST SEE
DO NOT SCALE DRAWING	CONTRACT NO.																																														
BORER THREADS PER HANDBOOK H-8																																															
COUNTERBORE AND SPOTFACE FILLET RADI TO BE AS MAXIMUM																																															
REMOVE ALL BURRS AND BREAK SHARP EDGES EQUIVALENT TO J60																																															
ROUNDNESS OF MACHINED SURFACES BY PER USAS T14.5																																															
STANDARD HOLE TOLERANCE PER AND 2007																																															
TOLERANCES ON .03" & .05" DIA HOLES BY 2007																																															
INTERPRET DIMENSIONS AND TOLERANCES PER USAS T14.5																																															
DIMENSIONS ARE IN INCHES AND APPLY AFTER HEAT TREAT AND FINISH UNLESS OTHERWISE SPECIFIED																																															
DRAWN	701803-200																																														
CHECKED	10-31-78																																														
ENGR																																															
PROJ. ENGR	10-31-78																																														
PROD. DESIGN																																															
OTHER APPROVALS																																															
PL 701803-200	FOR PARTS LIST SEE																																														
PL 701803-102	FOR PARTS LIST SEE																																														
PL 701803-200	FOR PARTS LIST SEE																																														
PL 701803-102	FOR PARTS LIST SEE																																														
<table border="1"> <tr> <th>NOTE</th> <th>PART OR IDENTIFYING NO.</th> <th>NOMENCLATURE OR DESCRIPTION / MATERIAL</th> <th>SPEC/SOURCE</th> <th>CODE IDENT NO.</th> <th>FIND NO.</th> </tr> <tr> <td></td> <td></td> <td></td> <td></td> <td></td> <td></td> </tr> </table>		NOTE	PART OR IDENTIFYING NO.	NOMENCLATURE OR DESCRIPTION / MATERIAL	SPEC/SOURCE	CODE IDENT NO.	FIND NO.																																								
NOTE	PART OR IDENTIFYING NO.	NOMENCLATURE OR DESCRIPTION / MATERIAL	SPEC/SOURCE	CODE IDENT NO.	FIND NO.																																										
<table border="1"> <tr> <th>DO NOT SCALE DRAWING</th> <th>CONTRACT NO.</th> </tr> <tr> <td>BORER THREADS PER HANDBOOK H-8</td> <td></td> </tr> <tr> <td>COUNTERBORE AND SPOTFACE FILLET RADI TO BE AS MAXIMUM</td> <td></td> </tr> <tr> <td>REMOVE ALL BURRS AND BREAK SHARP EDGES EQUIVALENT TO J60</td> <td></td> </tr> <tr> <td>ROUNDNESS OF MACHINED SURFACES BY PER USAS T14.5</td> <td></td> </tr> <tr> <td>STANDARD HOLE TOLERANCE PER AND 2007</td> <td></td> </tr> <tr> <td>TOLERANCES ON .03" & .05" DIA HOLES BY 2007</td> <td></td> </tr> <tr> <td>INTERPRET DIMENSIONS AND TOLERANCES PER USAS T14.5</td> <td></td> </tr> <tr> <td>DIMENSIONS ARE IN INCHES AND APPLY AFTER HEAT TREAT AND FINISH UNLESS OTHERWISE SPECIFIED</td> <td></td> </tr> </table>		DO NOT SCALE DRAWING	CONTRACT NO.	BORER THREADS PER HANDBOOK H-8		COUNTERBORE AND SPOTFACE FILLET RADI TO BE AS MAXIMUM		REMOVE ALL BURRS AND BREAK SHARP EDGES EQUIVALENT TO J60		ROUNDNESS OF MACHINED SURFACES BY PER USAS T14.5		STANDARD HOLE TOLERANCE PER AND 2007		TOLERANCES ON .03" & .05" DIA HOLES BY 2007		INTERPRET DIMENSIONS AND TOLERANCES PER USAS T14.5		DIMENSIONS ARE IN INCHES AND APPLY AFTER HEAT TREAT AND FINISH UNLESS OTHERWISE SPECIFIED		<table border="1"> <tr> <td>DRAWN</td> <td>701803-200</td> </tr> <tr> <td>CHECKED</td> <td>10-31-78</td> </tr> <tr> <td>ENGR</td> <td></td> </tr> <tr> <td>PROJ. ENGR</td> <td>10-31-78</td> </tr> <tr> <td>PROD. DESIGN</td> <td></td> </tr> <tr> <td>OTHER APPROVALS</td> <td></td> </tr> </table>		DRAWN	701803-200	CHECKED	10-31-78	ENGR		PROJ. ENGR	10-31-78	PROD. DESIGN		OTHER APPROVALS		<table border="1"> <tr> <td>PL 701803-200</td> <td>FOR PARTS LIST SEE</td> </tr> <tr> <td>PL 701803-102</td> <td>FOR PARTS LIST SEE</td> </tr> </table>		PL 701803-200	FOR PARTS LIST SEE	PL 701803-102	FOR PARTS LIST SEE	<table border="1"> <tr> <td>PL 701803-200</td> <td>FOR PARTS LIST SEE</td> </tr> <tr> <td>PL 701803-102</td> <td>FOR PARTS LIST SEE</td> </tr> </table>		PL 701803-200	FOR PARTS LIST SEE	PL 701803-102	FOR PARTS LIST SEE		
DO NOT SCALE DRAWING	CONTRACT NO.																																														
BORER THREADS PER HANDBOOK H-8																																															
COUNTERBORE AND SPOTFACE FILLET RADI TO BE AS MAXIMUM																																															
REMOVE ALL BURRS AND BREAK SHARP EDGES EQUIVALENT TO J60																																															
ROUNDNESS OF MACHINED SURFACES BY PER USAS T14.5																																															
STANDARD HOLE TOLERANCE PER AND 2007																																															
TOLERANCES ON .03" & .05" DIA HOLES BY 2007																																															
INTERPRET DIMENSIONS AND TOLERANCES PER USAS T14.5																																															
DIMENSIONS ARE IN INCHES AND APPLY AFTER HEAT TREAT AND FINISH UNLESS OTHERWISE SPECIFIED																																															
DRAWN	701803-200																																														
CHECKED	10-31-78																																														
ENGR																																															
PROJ. ENGR	10-31-78																																														
PROD. DESIGN																																															
OTHER APPROVALS																																															
PL 701803-200	FOR PARTS LIST SEE																																														
PL 701803-102	FOR PARTS LIST SEE																																														
PL 701803-200	FOR PARTS LIST SEE																																														
PL 701803-102	FOR PARTS LIST SEE																																														

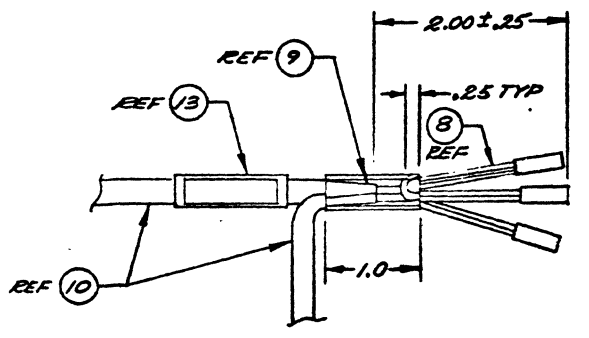
② MARK ASSEMBLY NUMBER, DESIGNATIONS AND LATEST ASSEMBLY REV. LETTER WITH .12 HIGH CHARACTERS. USING BLACK INK PER MIL-STD-13231, GROUP III, LOCATION APPROXIMATELY AS SHOWN.
 1. ASSEMBLE AND INSPECT PER WORKMANSHIP STANDARDS MANUAL.
 NOTES: UNLESS OTHERWISE SPECIFIED

The information herein is the property of PLESSEY MICROSYSTEMS. Transfer, receipt or possession of this information does not constitute an agreement or any other form of contract. No part of this information shall be reproduced or transmitted in any form or by any means, electronic, mechanical, photocopying, recording, or by any information storage and retrieval system, without the prior written permission of PLESSEY MICROSYSTEMS.

REVISIONS				
ZONE	LTR	DESCRIPTION	DATE	APPROVED
X1		REL TO DEV PER ERJ 501246	4-27-77	<i>[Signature]</i>
X2		REVISED FIGURE TO SHOW SHIELDED CABLE AND RELATED DETAILS. SEE SINGLE WIRES BUNDLED DETAIL NOTE 18. SPOT TIE WIRE BUNDLES USING ITEM II, A, R.	6-20-77	<i>[Signature]</i>
X3		INCORP ED 2487	9-12-77	<i>[Signature]</i>



WIRE CHART					
FROM	TO	FUNCTION	ITEM NO.	COLOR	
LUG-1	J3-1	SI-1	11	BLUE	
↑	-2	J3-3	SI-2	11	RED
↓	-3	J3-2	SI-3	11	YELLOW
↓	-3	J5A-3	AC RET	10	WHT
LUG-1	J5A-1	AC IN	10	BLK	
J5A-3	J5B-3	AC RET	10	WHT	
J5A-1	J5B-1	AC IN	10	BLK	
J5A-2	SHIELD	SHIELD	10	SHIELD	
J5B-2	J5A-2	SHIELD	10	SHIELD	



VIEW A
SCALE: NONE
J5A CONN. REMOVED FOR CLARITY

ENGINEERING RELEASE
COGNIZANT ENGINEER
NOT FOR FABRICATION UNLESS SIGNED BELOW
DATE

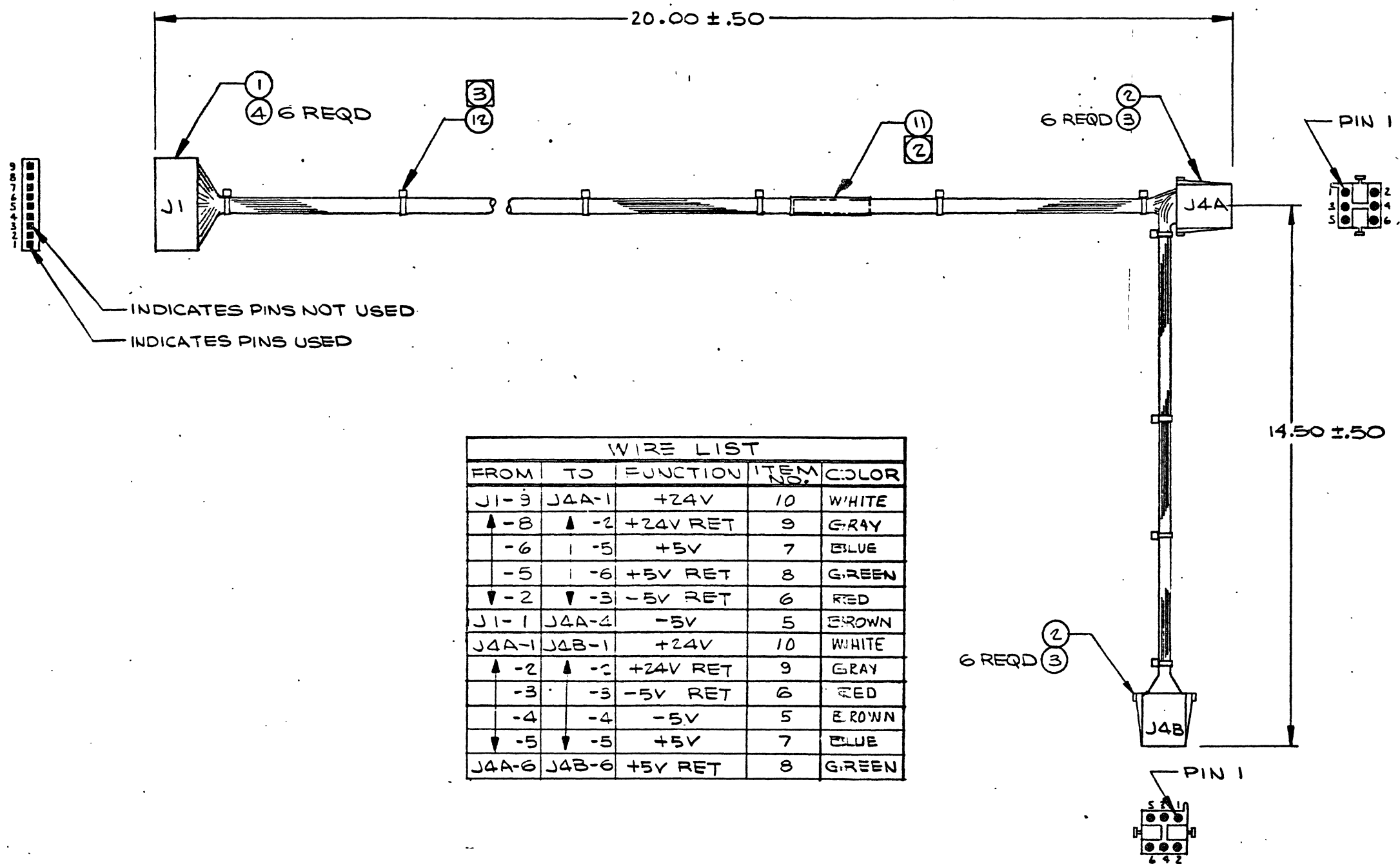
- ③ AFFIX ITEM 5 AS SHOWN.
- ② MARK ASSEMBLY NUMBER, DESIGNATIONS AND LATEST ASSEMBLY REV. LETTER WITH .12 HIGH CHARACTERS. USING BLACK INK PER MIL-M-13231, GROUP III. LOCATION APPROXIMATELY AS SHOWN.
- I. ASSEMBLE AND INSPECT PER WORKMANSHIP STANDARDS MANUAL.
- NOTES: UNLESS OTHERWISE SPECIFIED.

PART/ASSY NO. & QTY PER ASSY		X3		DO NOT SCALE DRAWING		CONTRACT NO.		Plessey Microsystems	
PART/ASSY REV LTR				SCREW THREADS PER HANDBOOK H-38		DRAWN		DWG TITLE	
				COUNTERBORE AND SPOTFACE FILLET RADIUS TO BE .030 MAXIMUM		CHECK		CABLE ASSEMBLY, AC PM-XS/11	
				REMOVE ALL BURRS AND BREAK SHARP EDGES EQUIVALENT TO .010		ENGR		SIZE CODE IDENT NO. DWG NO.	
				ROUGHNESS OF MACHINED SURFACES 32/100 PER USAC 34.1		PROJ. ENGR		D 52643 SK 701348	
				STANDARD HOLE TOLERANCE PER AND 3507		PROD. DESIGN		SCALE: 1/1	
				TOLERANCES ON .125 & .125 DIA = ± .002 ANGLES = 2.0° MIN		OTHER		SHEET OF 1	
				INTERPRET DIMENSIONS AND TOLERANCES PER USAC 34.1		APPROVALS		DISTR NO. 123470	
				DIMENSIONS ARE IN INCHES AND APPLY AFTER HEAT TREAT AND FINISH UNLESS OTHERWISE SPECIFIED					
-100 SK 701348-100 PM-XS/11		APPLICATION							

SK701348 X3 B

The information herein is the property of PLESSEY MICROSYSTEMS. Transmission, receipt or possession of the information does not constitute an agreement or any other rights to use, sell, or manufacture from this information and no reproduction or publication of it, in whole or in part, shall be made without written authorization from PLESSEY MICROSYSTEMS.

REVISIONS				
ZONE	LTR	DESCRIPTION	DATE	APPROV.
X1		REL TO DEV PER ERO 501246	4-27-77	<i>[Signature]</i>
X2		(1) ZWE C-3: 14 50 WAS 13.50 (2) ADDED: PIN REF NUMBERS TO CONNECTORS (3) WIRE LIST BLOCK: IS- J1-9 - J4A-1 - 10 - WHITE WAS- J1-1 - J4A-1 - 5 - BROWN IS- J1-6 - J4A-2 - 9 - GRAY WAS- J1-2 - J4A-2 - 6 - RED IS- J1-6 - J4A-5 - 7 - BLUE WAS- J1-4 - J4A-5 - 7 - YELLOW IS- J1-2 - J4A-3 - 4 - RED WAS- J1-8 - J4A-3 - 9 - GRAY IS- J1-1 - J4A-4 - 5 - BROWN WAS- J1-9 - J4A-4 - 10 - WHITE IS- J4A-1 - J4B-1 - 10 - WHITE WAS- J4A-1 - J4B-1 - 5 - BROWN IS- J4A-2 - J4B-2 - 9 - GRAY WAS- J4A-2 - J4B-2 - 6 - RED IS- J4A-3 - J4B-3 - 6 - RED WAS- J4A-3 - J4B-3 - 9 - GRAY IS- J4A-4 - J4B-4 - 5 - BROWN WAS- J4A-4 - J4B-4 - 10 - WHITE	6-17-77	<i>[Signature]</i>
X3		INCORP EO 3382	11-5-79	<i>[Signature]</i>



WIRE LIST				
FROM	TO	FUNCTION	ITEM NO.	COLOR
J1-9	J4A-1	+24V	10	WHITE
▲-8	▲-2	+24V RET	9	GRAY
-6	1-5	+5V	7	BLUE
-5	1-6	+5V RET	8	GREEN
▼-2	▼-3	-5V RET	6	RED
J1-1	J4A-4	-5V	5	BROWN
J4A-1	J4B-1	+24V	10	WHITE
▲-2	▲-2	+24V RET	9	GRAY
-3	-3	-5V RET	6	RED
-4	-4	-5V	5	BROWN
▼-5	▼-5	+5V	7	BLUE
J4A-6	J4B-6	+5V RET	8	GREEN

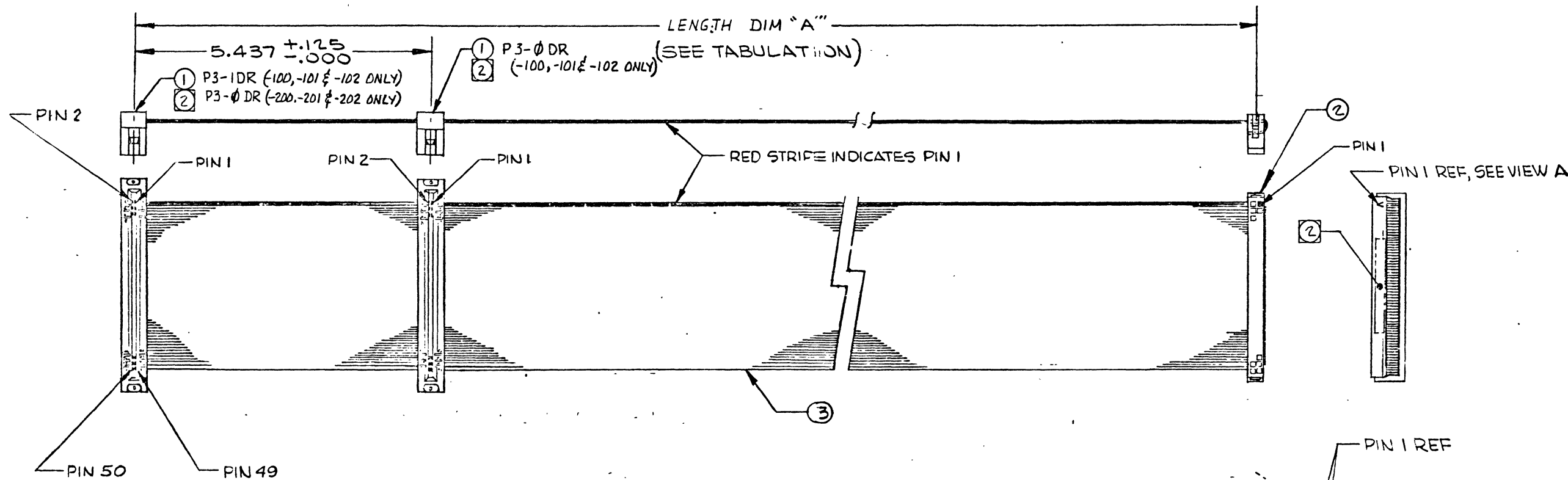
ENGINEERING RELEASE
 COGNIZANT ENGINEER
 NOT FOR FABRICATION UNLESS SIGNED BELOW
 DATE 5/77

- ③ SPOT TIE WIRE BUNDLES USING ITEM 12 AS REQUIRED.
 - ② MARK ASSEMBLY NUMBER, DESIGNATIONS AND LATEST ASSEMBLY REVISION LETTER WITH .12 HIGH CHARACTERS, USING BLACK INK PER MIL-M-13231, GROUP III. LOCATION TO BE APPROXIMATELY AS SHOWN.
 - 1. ASSEMBLE AND INSPECT PER WORKMANSHIP STANDARDS MANUAL.
- NOTES: UNLESS OTHERWISE SPECIFIED

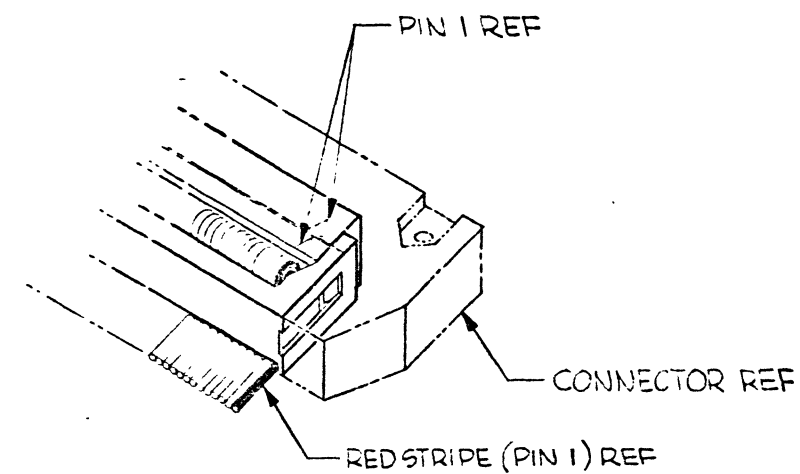
PART/ASSY NO. & QTY PER ASSY		PARTS LIST		SPEC/SOURCE		CODE IDENT NO.	FIND NO.
X3		DO NOT SCALE DRAWING		CONTRACT NO.		Plessey Microsystems	
PART/ASSY REV LTR		SCREW THREADS PER HANDBOOK M3B COUNTERBORE AND SPOTFACE FILLET RADIUS TO BE .010 MAXIMUM REMOVE ALL BURRS AND BREAK SHARP EDGES EQUIVALENT TO J3B ROUNDNESS OF MACHINED SURFACES .001 PER USAS B46.1 STANDARD HOLE TOLERANCE PER AND SEMI TOLERANCES ON .010 & .020 .001 & .002 AND ANGLES 5 & 10° INTERPRET DIMENSIONS AND TOLERANCES PER USAS Y14.5 DIMENSIONS ARE IN INCHES AND APPLY AFTER HEAT TREAT AND FINISH UNLESS OTHERWISE SPECIFIED		DRAWN <i>[Signature]</i> 4/77 CHECK <i>[Signature]</i> 4-27-77 ENGR PROJ. ENGR <i>[Signature]</i> 4/77 PROD. DESIGN OTHER APPROVALS		DWG TITLE CABLE ASSEMBLY, DC PM-XS/11 SIZE CODE IDENT NO. DWG NO. D 52648 SK 701349 SCALE: 1/1 SHEET 1 OF 1	
-100 SK701345-100 PM-XS/11		FOR PARTS LIST SEE SKPL701349-100		DATE 5/77		DISTR NO. 1349	

The information herein is the property of PLESSEY MICROSYSTEMS. No part of this information may be reproduced or transmitted in any form or by any means, electronic or mechanical, including photocopying, recording, or by any information storage and retrieval system, without written authorization from PLESSEY MICROSYSTEMS.

REVISIONS				
ZONE	LTR	DESCRIPTION	DATE	APPROVED
A		REL TO PROD PER EO 3396	11-20-79	[Signature]



TABULATION		
ASSY NO	LENGTH 'A' (INCHES)	
-100	96.00 ±.00	+2.00
-101	120.00 ±.00	+4.00
-102	180.00 ±.00	+6.00
-200	96.00 ±.00	+2.00
-201	120.00 ±.00	+4.00
-202	180.00 ±.00	+6.00



VIEW A
SCALE: NONE
INSTALLATION VIEW

PRODUCTION RELEASE

PART/ASSY NO. & QTY PER ASSY		PARTS LIST		SPEC/SOURCE		CODE IDENT NO.		FIND NO.	
X	X	X							5
		X	X	X					4
									3
									2
									1
-202 -201 -200 -102 -101 -100		NOTE: PART OR IDENTIFYING NO.		NOMENCLATURE OR DESCRIPTION / MATERIAL		SPEC/SOURCE		CODE IDENT NO.	
-202		701025		PM-XS11				5	
-201		703170		PM-XS11				4	
-200		703150		PM-XS11				3	
-102		701025		PM-XS11				2	
-101		701025		PM-XS11				1	
-100		701025		PM-XS11					

② MARK ASSEMBLY NUMBER, DESIGNATIONS AND LATEST ASSEMBLY REV. LETTER WITH .12 HIGH CHARACTERS. USING BLACK INK PER MIL-M-13231, GROUP III, LOCATION APPROXIMATELY AS SHOWN.

1. ASSEMBLE AND INSPECT. PER WORKMANSHIP STANDARDS MANUAL.

NOTES: UNLESS OTHERWISE SPECIFIED

PART NO.	DESCRIPTION	APPLICATION
-202	701025	PM-XS11
-201	703170	PM-XS11
-200	703150	PM-XS11
-102	701025	PM-XS11
-101	701025	PM-XS11
-100	701025	PM-XS11

DO NOT SCALE DRAWING SCREW THREADS PER HANDBOOK H-28 COUNTERBORE AND SPOTFACE FILLET RADIUS TO BE .510 MAXIMUM REMOVE ALL B. HRS AND BREAK SHARP EDGES EQUIVALENT TO R.05 ROUGHNESS OF MACHINED SURFACES 320 PER USAS B-6.1 STANDARD HOLE TOLERANCE PER AND SEMI TOLERANCES ON .XX ± .03 .XXX ± .015 DIMENSIONS ARE IN INCHES AND APPLY AFTER HEAT TREAT AND FINISH UNLESS OTHERWISE SPECIFIED		CONTRACT NO. DRAWN [Signature] CHECK [Signature] ENGR [Signature] PROJ. ENGR [Signature] PROD. DESIGN [Signature] OTHER [Signature] APPROVALS [Signature]	Plessey Microsystems DWG TITLE CABLE ASSEMBLY, SIGNAL PM-XS 11 SIZE CODE IDENT NO. DWG NO. D 51618 701347 SCALE: 1:1 SHEET 1 OF 1 DISTR NO. 234790
---	--	--	---