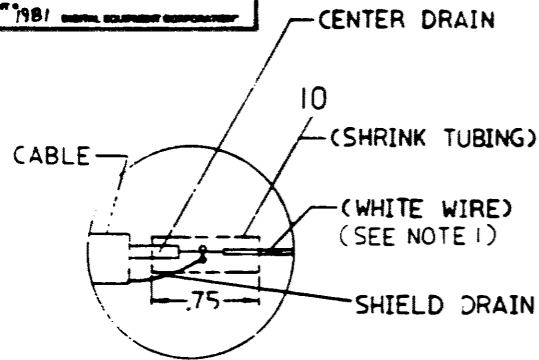
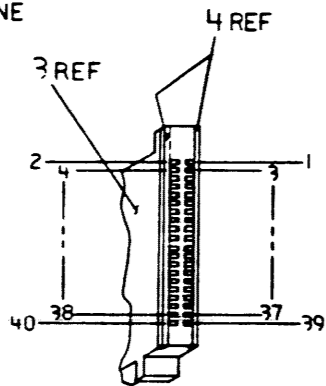


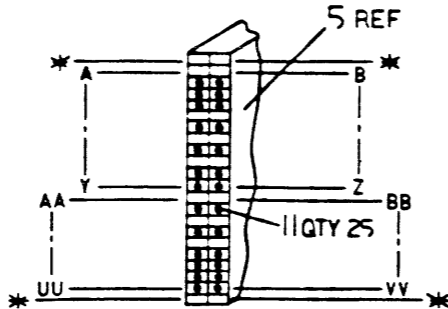
THE DIMENSIONS AND SPECIFICATIONS HEREIN ARE THE PROPERTY OF DIGITAL EQUIPMENT CORPORATION AND SHALL NOT BE REPRODUCED OR COPIED IN WHOLE OR IN PART AS THE BASIS FOR THE REPRODUCTION OR SALE OF GOODS WITHOUT WRITTEN PERMISSION.
COPYRIGHT © 1981 DIGITAL EQUIPMENT CORPORATION



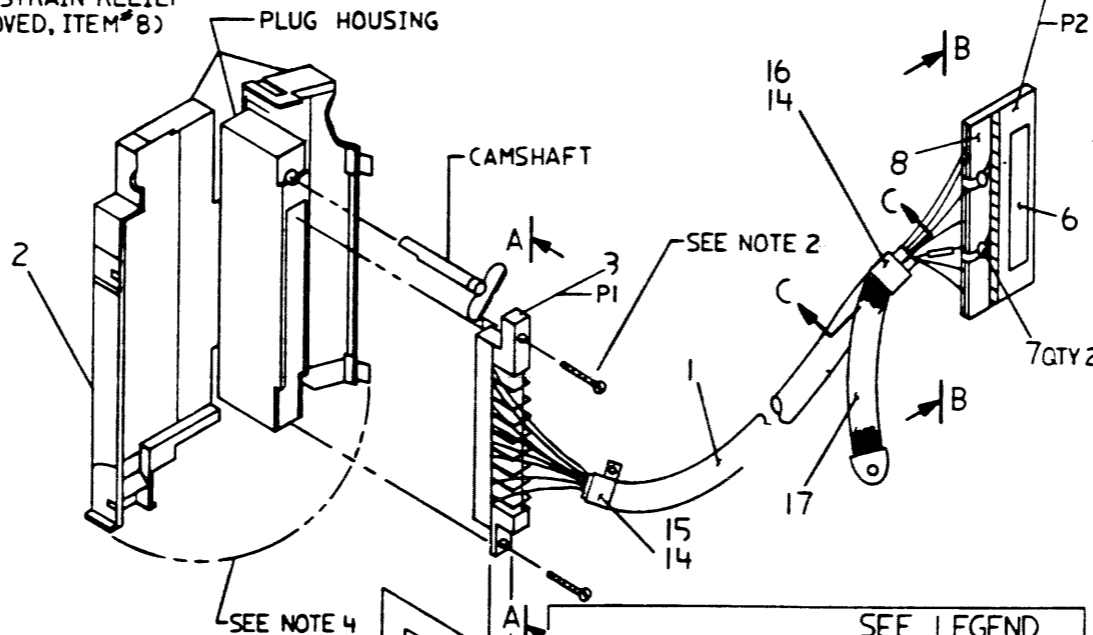
DETAIL "A"
SCALE: NONE



VIEW A-A
SCALE: NONE
(WITH ITEM 3 & ITEM 4 ASSEMBLED)



VIEW B-B
SCALE: NONE
(WITH STRAIN RELIEF REMOVED, ITEM 8)

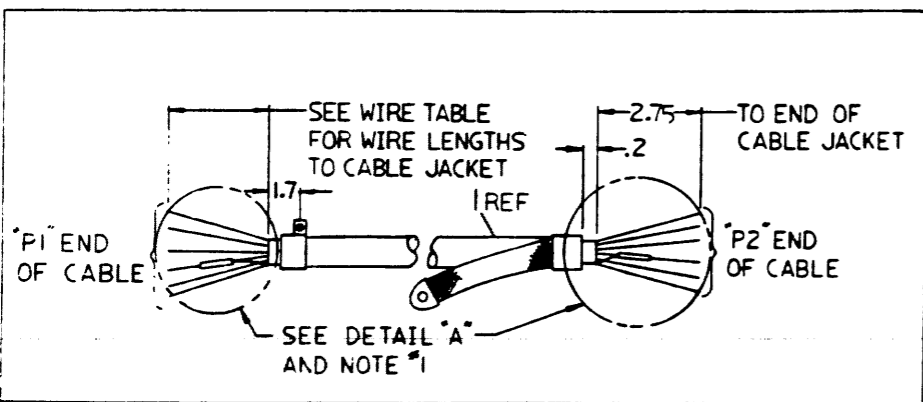


LEGEND		
NUMBER	DIM "X" VARIATION	DIM "Y" (PRECUT) REF
BC80M-06	6FT-0IN ± 2IN	6FT-8.0 IN
BC80M-10	10FT-0IN ± 2IN	10FT-8.0 IN
BC80M-15	15FT-0IN ± 2IN	15FT-8.0 IN
BC80M-25	25FT-0IN ± 3IN	25FT-10.5 IN
BC80M-50	50FT-0IN ± 3IN	50FT-10.5 IN
BC80M-A3	100FT-0IN ± 3IN	100FT-10.5 IN
BC80M-12	12FT-0IN ± 2IN	12FT-8.0 IN

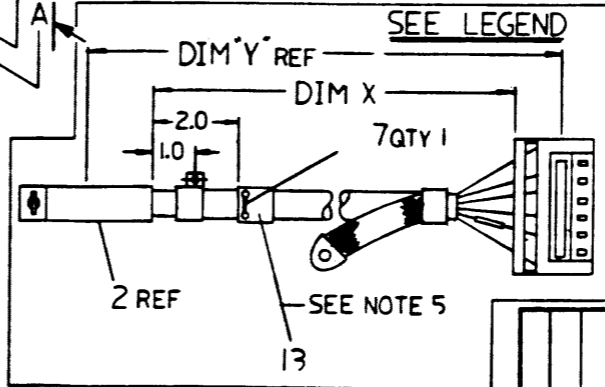
NOTES:
FOR NOTES SEE SHEET 2

FOR WIRE TABLE SEE SHEET 2

CAUTION: OFF SHEET PARTS LIST EXISTS.
SEE K-PL-BC80M-0-DBP



4 (QTY 2)
SEE NOTE 1



DESCRIPTION	DRAWING NO.	PART NO.	ITEM NO.
UNLESS OTHERWISE SPECIFIED DIMENSIONS ARE IN INCHES AND THE FOLLOWING TOLERANCES APPLY (PER DEC STD 114)			
INCHES TOLERANCES	DIMENSION RANGE IN INCHES		
	OVER 1.2 TO 0.2	OVER 0.2 TO 0.1	OVER 0.1 TO 0.0
ANGLES ± 30'	SURFACE QUALITY	DIMENSION RANGE IN INCHES	
X ± 0.1	✓	OVER 1.2 TO 0.2	OVER 0.2 TO 0.1
XX ± 0.05		OVER 0.2 TO 0.1	OVER 0.1 TO 0.0
XXX ± 0.005		OVER 0.2 TO 0.1	OVER 0.1 TO 0.0
THIRD ANGLE PROJECTION	DESIGNED BY: <i>Joe Donahue</i>	DATE: 15 JULY 81	TITLE: I/O CABLE (BC80M)
DO NOT SCALE DRAWING	CHECKED BY: <i>Jim Smith</i>	DATE: 3-SEP-81	DOCUMENT NUMBER: DUA BC80M-0-0
REMOVE BURRS AND BREAK SHARP CORNERS	DESIGNED BY: <i>Robert Fitch</i>	DATE: 14-SEP-81	SCALE: 1" = 1'-0"
MATERIAL: SEE PARTS LIST	DESIGNED BY: <i>Robert Fitch</i>	DATE: 14-SEP-81	SHEET 1 OF 2

REV.	INITIAL	DATE	DESCRIPTION
A			
B			
C			
D			

DUA BC80M-0-0

THIS DRAWING AND SPECIFICATIONS HEREIN ARE THE PROPERTY OF DIGITAL EQUIPMENT CORPORATION AND SHALL NOT BE REPRODUCED OR COPIED OR USED IN WHOLE OR IN PART AS THE BASIS FOR THE MANUFACTURE OR SALE OF ITEMS WITHOUT WRITTEN PERMISSION.
COPYRIGHT © 1975 DIGITAL EQUIPMENT CORPORATION

WIRE TABLE

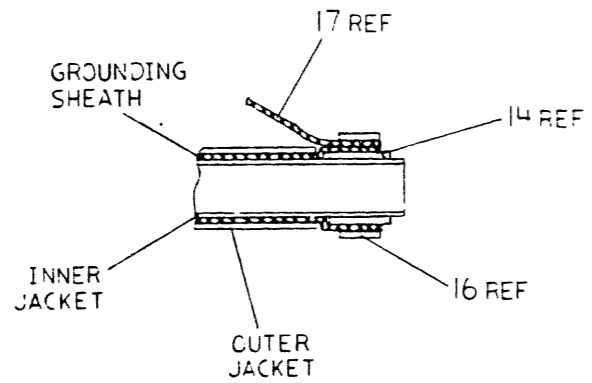
ITEM NO.	WIRE LENGTH TO CABLE JACKET	DESCRIPTION	FROM	TO	SIGNAL NAME	REMARKS
			P1-1	P2-A		
			P1-2	P2-B		NO CONN
			P1-3	P2-C	DRV ERR +	
	2.50	TWP RED	P1-4	P2-D	DRV ERR -	
	2.50	TWP WHT/RED	P1-5	P2-E	DRV RDY +	
	2.38	TWP RED	P1-6	P2-F	DRV RDY -	
	2.38	TWP WHT/GRN	P1-7	P2-H	SEC PLS +	
	2.25	TWP RED	P1-8	P2-J	SEC PLS -	
	2.25	TWP WHT/ORN	P1-9	P2-K		
			P1-10	P2-L		NO CONN
			P1-11	P2-M	STAT CLK +	
	2.00	TWP RED	P1-12	P2-N	STAT CLK -	
	2.00	TWP WHT/YEL	P1-13	P2-P		
			P1-14	P2-R		NO CONN
			P1-15	P2-S	STAT IN +	
	1.75	TWP RED	P1-16	P2-T	STAT IN -	
	1.75	TWP WHT/BLK/RED	P1-17	P2-U		
			P1-18	P2-V		NO CONN
			P1-19	P2-W	READ DATA+	
	1.62	TWP RED	P1-20	P2-X	READ DATA-	
	1.62	TWP WHT/BLK/ORN	P1-21	P2-Y	DRIVE CMND+	
	1.50	TWP RED	P1-22	P2-Z	DRIVE CMND-	
	1.50	TWP WHT/BLK/BLU				

WIRE TABLE

ITEM NO.	WIRE LENGTH TO CABLE JACKET	DESCRIPTION	FROM	TO	SIGNAL NAME	REMARKS
			P1-23	P2-AA		
			P1-24	P2-BB		NO CONN
			P1-25	P2-CC	WRT DATA -	
	.38	TWP RED	P1-26	P2-DD	WRT DATA +	
	.38	TWP WHT/BLK/BRN	P1-27	P2-EE		NO CONN
			P1-28	P2-FF		
			P1-29	P2-HH	SYS CLK -	
	1.25	TWP RED	P1-30	P2-JJ	SYS CLK +	
	1.25	TWP WHT/GRN/RED	P1-31	P2-KK		
			P1-32	P2-LL		NO CONN
			P1-33	P2-MM	WRT GATE -	
	.18	TWP RED	P1-34	P2-NN	WRT GATE +	
	.18	TWP WHT/GRN/BLU	P1-35	P2-PP	DR. SEL 1 -	
	1.00	TWP RED	P1-36	P2-RR	DR. SEL 1 +	
	1.00	TWP WHT/GRN/YEL	P1-37	P2-SS	DR. SEL 0 -	
	.88	TWP RED	P1-38	P2-TT	DR. SEL 0 +	
	.88	TWP WHT/GRN/BRN	P1-39	P2-UU	DC CLK	
	.75	TWP YEL				SEE NOTE 1
	.75	TWP WHT				SEE NOTE 1
	1.75	TWP BLK	P1-40	P2-VV	GND	SEE NOTE 1

NOTES:

- THE DRAIN WIRE AND INNER GND WIRE MUST BE PREPARED AS FOLLOWS BEFORE TERMINATING CABLE TO PLUG ON BOTH ENDS OF WIRE.
 - CUT BACK THE CENTER BLACK GND WIRE 0.4 ± 0.1 INCH ABOVE JACKET, STRIP END 0.25 ± .06 INCH.
 - FIND AND SEPARATE THE SOLID WHITE AND YELLOW PAIRED WIRES. CUT THE WHITE WIRE FLUSH WITH JACKET. STRIP END OF LOOSE WHITE WIRE 0.25 ± .06 INCH
 - POSITION STRIPPED END OF WHITE WIRE PARALLEL TO THE STRIPPED END OF THE BLACK GND WIRE. WRAP THE DRAIN WIRE AROUND THE STRIPPED END OF THE BLACK AND WHITE WIRE 2-4 TIMES. SOLDER WIRE SPLICE AND CUT OFF END OF DRAIN FLUSH WITH SPLICE.
 - COVER SPLICE WITH 0.5 ± .06 INCH OF SHRINK TUBING, ITEM 4, TWIST THE WHITE AND YELLOW WIRES (PREVIOUSLY SEPARATED) BACK TOGETHER FOR APPROXIMATELY (3) THREE INCHES.
- SCREWS (2 X .316 SELF TAPPING) ARE PART OF PLUG HOUSING AND CAMSHAFT KIT (ITEM *2).
- REF ONLY CONTACT (DEC PART NO. 1211591-27) FOR REPLACEMENT ONLY.
- PRIOR TO SNAPPING SIDES OF PLUG HOUSING TOGETHER CARE SHOULD BE TAKEN TO ASSURE THAT ALL WIRES ARE SUFFICIENTLY WITHIN HOUSING TO PREVENT PINCHING OF INDIVIDUAL STRANDS.
- CABLE TO BE MARKED WITH PART NUMBER BC80M AND REV IN AREA SHOWN.
- * DENOTES CAVITIES NOT TO BE USED OR DESIGNATED BY LETTERS.



SECTION C-C
SCALE: NONE

REVISION HISTORY		
DATE	ECO NUMBER	REV

DOCUMENT NUMBER		
SIZE CODE	NUMBER	REV
DUA	BC80M-0-0	C
SCALE		SHEET 2 OF 2

TITLE I/O CABLE
(BC80M)

REV C
DUA
BC80M-0-0