

## 78Z1122B-04 78Z1122D-04, and 78Z1122F-04 for 802.3 10Base-T LAN Applications

### Key Features

- All Fil-Mag® components are manufactured in ISO 9001 certified facilities to meet the highest international standards
- Components meet or exceed IEEE 802.3 10Base-T specifications
- Ideal for adapter cards, MAUs, Hubs, and Motherboard applications
- High performance for maximum EMI suppression
- 2000 Vrms isolation voltages
- 1:1.41 turns ratio meets DEC's specification for the transmit channel

### Surface Mount

- Proven in all surface mount soldering processes
- Available in tubes; tape and reel optional

### Through-Hole

- Auto insertable
- SIP package (78Z1122F-XX) ideal for multiport repeater hub applications

\* Pulse/Fil-Mag's policy is to keep all catalog parts active. However, some parts may be subject to change. Contact customer service for the status of any part. (619) 674-8100

**Fil-Mag**<sup>®</sup>  
A Technitrol Company  
Fil-Mag Legacy Products



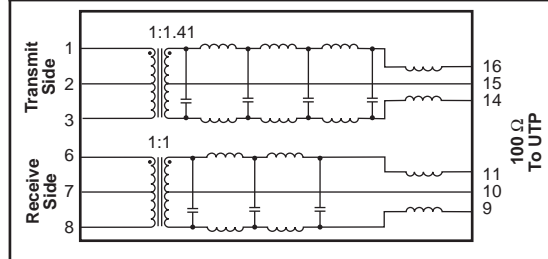
## 10Base-T Interface Modules for Use with DEC's 21040 PCI Bus Transceiver



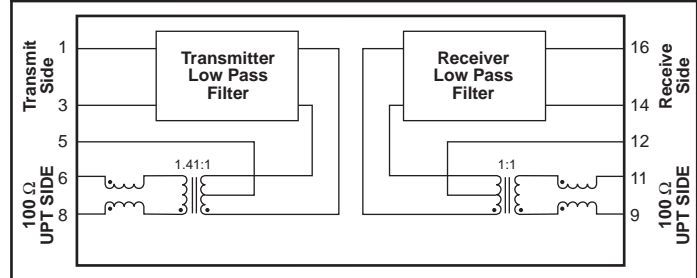
Electrical Specifications at 25°C

Part No	Package Type (Pins)	Insertion Loss to 10 MHz dB Max	Attenuation				Return Loss 0.5-10MHz dB min 100Ω ±15Ω	Crosstalk to 30MHz dB min	Common Mode Rejection dB min		Scheme
			30-50MHz		50-100MHz				50MHz	100MHz	
			Tx	Rx	Tx	Rx					
* 78Z1122B-04	DIL (16)	-1.0	-27	-18	-32	-20	-15	-30	-30	-25	A
* 78Z1122D-04	SMD (16)	-1.0	-30	-18	-35	-20	-15	-30	-40	-30	B
78Z1122F-04	SIP (10)	-1.0	-30	-22	-40	-40	-15	-20	-45	-40	C

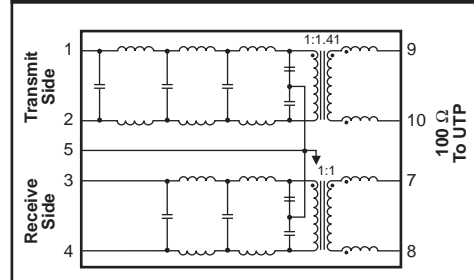
Schematic A



Schematic B

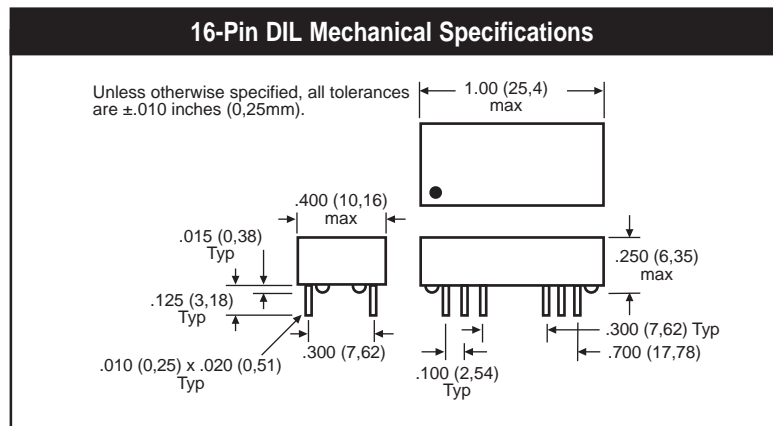
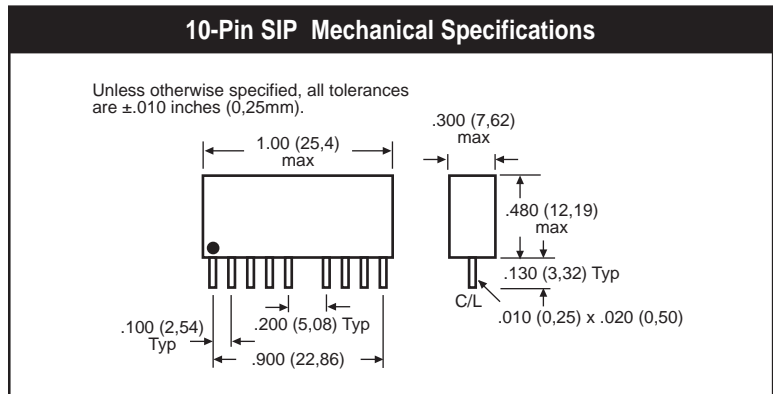
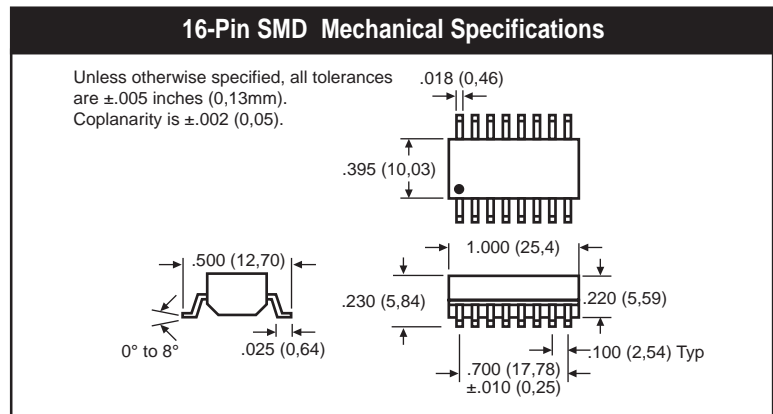
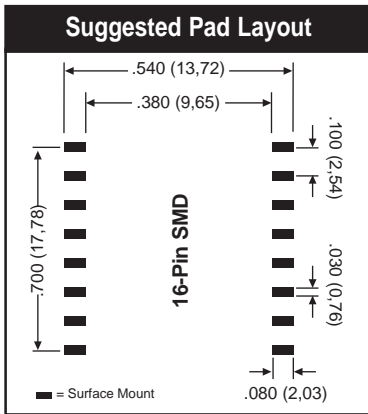


Schematic C



**78Z1122B-04 78Z1122D-04,  
and 78Z1122F-04 for 802.3  
10Base-T LAN Applications**

**10Base-T Interface Modules for Use  
with DEC's 21040 PCI Bus Transceiver**



Copyright ©1996, Pulse Engineering, Inc., San Diego, CA

The components on this data sheet are Fil-Mag Legacy Parts.

In the construction of the components described, the full intent of the specification will be met. Pulse, however, reserves the right to make, from time to time, such departures from the detail specifications as may be required to permit improvements in the design of its products.

The information included herein is believed to be accurate and reliable. However, Pulse assumes no responsibility for its use; nor for any infringements of patents or other rights of third parties which may result from its use.



**Corporate**  
12220 World Trade Drive  
San Diego, CA 92128  
Tel: 619 674 8100  
FAX: 619 674 8262  
<http://www.pulseeng.com>  
Quick-Facts 619 674 9672

**Europe**  
Millpool House  
Mill Lane, Godalming  
Surrey GU7 1EYU  
U.K.  
Tel: 441 483 428 8777  
FAX: 441 483 416 011

**Asia**  
P.O. Box 26-11 KEPZ  
6 Central Sixth Road  
KEPZ, Kaohsiung  
Taiwan, R.O.C.  
Tel: 886 821 3141  
FAX: 886 7 841 9707

**Distributor**